



DE VALK  
YACHT BROKERS



## LINSSEN GRAND STURDY 380 SEDAN



DE VALK  
YACHT BROKERS

# LINSSEN GRAND STURDY 380 SEDAN

## KOMMENTARE DES MAKLERS

Neat, solid, and seaworthy Linssen Grand Sturdy 380 Sedan. Very easy to handle thanks to the bow and stern thrusters. Extremely comfortable with a spacious single-level living area (helm – galley – saloon – patio doors – open cockpit), central heating, double glazing, generator, air conditioning and an open roof. This motor yacht is moored on the Grevelingenmeer in Zeeland. If you would like to view this beautiful motorboat, please contact De Valk Sint Annaland to schedule an appointment.

*Jan-Ward van Dantzig*

## TECHNISCHE DATEN

<b>Maße</b>	11.60 x 3.85 x 1.15 (m)	<b>Werft</b>	Linssen Yachts B.V. - Maasbracht
<b>Baujahr</b>	2006	<b>Kabinen</b>	2
<b>Material</b>	Stahl	<b>Kojen</b>	4
<b>Motor(en)</b>	1 x Vetus DT-44425A diesel	<b>PS/kW</b>	114.00 (PS), 83.90 (kW)
<b>Angebotspreis</b>	verkauft (MwSt. )	<b>Liegeplatz</b>	elsewhere / nicht im Verkaufsbüro

## KONTAKT

<b>Verkaufsbüro</b>	De Valk Sint Annaland B.V.	<b>Telefon</b>	+31 (0)166 601 000
<b>Adresse</b>	Koelhuisweg 4 4697 RM Sint Annaland NL	<b>E-Mail</b>	sintannaland@devalk.nl

## HAFTUNGSAUSSCHLUSS

Diese Angaben erfolgen nach bestem Wissen, können jedoch nicht garantiert werden.



# LINSSEN GRAND STURDY 380 SEDAN

## ALLGEMEIN

<b>Modell</b>	LINSSEN GRAND STURDY 380 SEDAN
<b>Typ</b>	Motoryacht
<b>Rumpflänge (m)</b>	11,60
<b>Wasserlinienlänge (m)</b>	9,55
<b>Breite (m)</b>	3,85
<b>Tiefgang (m)</b>	1,15
<b>Durchfahrtshöhe (m)</b>	4,00
<b>Durchfahrtshöhe min (m)</b>	2,85
<b>Stehhöhe (m)</b>	1,95
<b>Baujahr</b>	2006
<b>Lancierung</b>	2007
<b>Werft</b>	Linssen Yachts B.V. - Maasbracht
<b>Land</b>	Niederlande
<b>Entwerfer</b>	Linssen Yachts B.V.
<b>Gewicht (t)</b>	16,3
<b>CE Norm</b>	B
<b>Rumpfmateriäl</b>	Stahl
<b>Rumpffarbe</b>	Blau Painted dark blue by Linssen Yachts in 2018
<b>Haut-dicke Rumpf (mm)</b>	6/5
<b>Rumpfform</b>	Knikspant
<b>Material Aufbauten</b>	Stahl
<b>Haut-dicke Aufbauten (mm)</b>	4
<b>Haut-dicke Deck (mm)</b>	4
<b>Stossliste</b>	Kabelaring & hard rubber around bathing platform
<b>Deckmaterial</b>	Stahl
<b>Deck Finish</b>	Teak Refurbished in 2018 (including new caulking)
<b>Deck Finish Aufbauten</b>	Antirutsch Farbe
<b>Pflicht Bedeckung</b>	Teak Refurbished in 2018 (including new caulking)
<b>Antifouling (Jahr)</b>	New layer was applied in 2024
<b>Dorado Belufter</b>	1 x Stainless steel shell on the deck hatch of the bathroom



# LINSSEN GRAND STURDY 380 SEDAN

<b>Fenster Einfassung</b>	Aluminium
<b>Fenster Material</b>	Doppelverglasung With a cover over the 5 front windows (New in 2021)
<b>Decksluke</b>	Gebo with shades & mosquito screens
<b>Bullauge</b>	Aluminium With mosquito screens
<b>Isolation</b>	Glaswolle
<b>Mast legbar</b>	handbetrieb (with a teak support)
<b>Treibstofftank (Liter)</b>	Stahl 2 x 450
<b>Füllstandsanzeige (Treibstofftank)</b>	ja
<b>Trinkwassertank (Liter)</b>	Kunststoff 2 x 220
<b>Füllstandsanzeige (Trinkwasser)</b>	ja
<b>Fäkaelien Tank (Liter)</b>	Kunststoff 220
<b>Füllstandsanzeige (Fakaelientank)</b>	Gobius 4
<b>Fäkaelien Tankablauf</b>	Deck Verbindung + Pumpe (electric Exalto vacuum pump)
<b>Radsteuerung</b>	hydraulik Teak Stado steering wheel
<b>Innerhalb Steuerung</b>	Vetus MTC 72 - MT130 hydraulic system
<b>Not-Pinne</b>	ja
<b>Weitere Info Rumpf</b>	Hull above & below waterline was sandblasted by Linssen in 2018
<b>Weitere Info Farbe und Anstrich</b>	New paint systems applied on hull by Linssen in 2018
<b>Weitere Info</b>	New antifouling system on underwater hull by Linssen in 2018
<b>Weitere Info</b>	Middle window can be opened and is supported with a gas spring
<b>Weitere Info</b>	PS Middle steering house window slides up/down & mosquito screen

## UNTERKUNFT

<b>Kabinen</b>	2
<b>Kojen</b>	4
<b>Innen</b>	Kirsche Finished with unique wenge frames
<b>Fussboden</b>	Teak und Holly (teak with ash)
<b>Offenen Cockpit</b>	ja
<b>Ruderhaus/Decksalon</b>	Headroom : 1,95 - 2,10 m



# LINSSEN GRAND STURDY 380 SEDAN

Salon	ja
Standhöhe Salon (m)	1,95 - 2,10
Schiebedach	handbetrieben
Heizung	wasserheizung Eberspacher Hydronic M D5W5
Klima Anlage	Klima einzel Funktion 1 x Dometic Cruisair 10.000 BTU (in the owners cabin)
Dinette	Half round saloon sofa on starboard side (2 x drawer underneath)
Tür zum Cockpit	2 x Opening door to aft deck / cockpit
Kombüse	On Port Side with a pull-out waste bin - Headroom: 1,95 m
Arbeitsfläche	Corian Grey
Spülbecken	Edelstahl 1 x
Herd	keramisch 2 x Burner - Siemens
Mikrowelle/Backofen Kombi	& Grill - ATAG - Electric (220V)
Kuhlschrank	Coolmatic front loader with a compressor
Gefrier Truhe	Small freezing compartment in the Coolmatic fridge
Warmwasser System	220V + Motor 45 Liter AquaH Marine Water Heater (Renewed in 2018)
Wasserdruck System	elektrisch With a Jabsco waterpump
Geschirrausstattung	(for 4 persons) & glasses (glasses with Linszen logo)
Eignerkabine	Französisch Bett Front cabin - Headroom : 1,94 m
Länge Bett (m)	2,05 x 1,60
Kleiderschrank	hängend/Schublad/Regale
Badezimmer	gemeinsam The bathroom features a modern towel radiator. Headroom : 1,88 m
Toilet	gemeinsam
Toilette System	elektrisch Jabsco Quiet Flush
Handwaschbecken	im Badezimmer
Dusche	gemeinsam With a sliding door & automatic drain pump - Headroom : 1,98 m
Weitere Info	Slatted base under mattress in owner's cabin
Gästekabine 1	Stockbett On starboard side - Headroom : 1,95 m
Länge Bett (m)	2 x 2,05 x 0,70



# LINSSEN GRAND STURDY 380 SEDAN

**Kleiderschrank**

**Weitere Info**

**Weitere Info**

**Weitere Info**

Regale

Headroom in hallway from steering house to front cabin : 1,96 m

White curtains & white Luxaflex for windows in steering house

Ceiling finished in Novolux with LED interior lights

## MASCHINEN

**Motoranzahl**

1

**Marke**

Vetus

**Typ**

DT-44425A

**PS**

114

**kW**

83.90

**Kraftstoffart**

Diesel

**Installiert im Jahr**

2006

**Höchstgeschwindigkeit (Kn)**

8,5

**Marschgeschwindigkeit (Kn)**

7

**Motorstunden**

955

**Kühlungssystem Motor**

indirekte Wärmetauscher

**Antrieb**

Schraubenwelle

**Motor bedienung**

Seilzug Kabel

**Gewende getriebe**

hydraulic ZF Hurth ZF45 / 25:1

**Bugschraube**

elektrisch Vetus 95kgf - with remote controle

**Heckschraube**

elektrisch Vetus 95kgf - with remote controle

**Exhaust**

wassergekühlt

**Wellen Drucklager**

Python P80 S40

**Propeller Typ**

fest

**Propellerblätter**

4

**Material Propellerwelle**

Edelstahl

**Propellerwelle schmierung**

Wasser

**Elektrische Bilgenpumpe**

Jabsco & a loose Johnson pump with longer hose

**Bilge Alarm**

ja

**Elektrische Anlage**

12 & 220 Volt



# LINSSEN GRAND STURDY 380 SEDAN

<b>Generator</b>	leise Separator Onan MDKAU 4.0 (Halyard HMI water separator)
<b>Betriebsstunden Generator</b>	140
<b>Starterbatterie</b>	4 x 90 Ah (2018), also connected to the bow- & stern thruster
<b>Versorgungsbatterie</b>	4 x 90 Ah AGM Mastervolt (2018)
<b>Batterie Ladegerat</b>	Mastervolt Mass 12V/60A
<b>Umwandler</b>	Mastervolt Mass Sine 12V/2000W
<b>Solar panele</b>	2 x (New in 2020 - connected to the engine batteries)
<b>Dioden-Batterie-Koppler</b>	ja
<b>Landstrom</b>	mit Kabel
<b>Weitere Info</b>	Separ Diesel filter with water separator
<b>Weitere Info</b>	Engine & generator have been maintained annually
<b>Weitere Info</b>	Several 12 Volt & 220 Volt sockets throughout the interior

## NAVIGATION

<b>Elektrisches Kompas</b>	Raymarine ST60 Compass
<b>Tiefenanziege/Logge</b>	Raymarine ST60+ Tridata
<b>UKW</b>	Raymarine Ray 240
<b>Autopilot</b>	Raymarine ST6002 & Raymarine S100 (wire-less remote) Controller
<b>Ruderwinkel Anzeige</b>	In the autopilot display
<b>Plotter/GPS</b>	Raymarine Axiom+ 9' (New in 2022)
<b>Elektronische Kart(en)</b>	1 x Navionix
<b>Navigation Beleuchtung</b>	Complete + 2x decklight + dimmable cockpit light
<b>Suchscheinwerfer</b>	Jabsco Ray-Line 135 SL with remote at the steering wheel
<b>Weitere Info</b>	Custom made steering seat with extra cupboard space underneath
<b>Weitere Info</b>	Nice bar with extendable glass racks between galley & helm seat

## AUSRÜSTUNG

<b>Kuchenbude</b>	Beige - New in April 2024 - Headroom : 1,95 m
-------------------	---



# LINSSEN GRAND STURDY 380 SEDAN

<b>Bimini</b>	By rolling up/unzipping all rear & side panels of cockpit cover
<b>Winterplane</b>	Only over the cockpit
<b>Cockpit Polster</b>	Dark Blue (New in 2023)
<b>Cockpit Tisch</b>	Teak - with a (folding) passage in the middle
<b>Badeplattform</b>	With teak
<b>Badeleiter</b>	Edelstahl With teak steps
<b>Heckdusche</b>	On the bathing platform (hot & cold pressured water)
<b>Anker</b>	1 x
<b>Ankerkette</b>	ja
<b>Ankerwinde</b>	elektrisch Vetus Alexander III, control on bow & remote at steering wheel
<b>Deckwasche</b>	ja
<b>See Reling</b>	Edelstahl (double)
<b>Zupackenschiene (aufbauten)</b>	Edelstahl
<b>Heckkorb</b>	Stainless steel
<b>Rettungsboje</b>	Round white/red buoy
<b>Scheibenwischer</b>	2 x Exato, with fresh water spray
<b>Horn</b>	elektrisch
<b>Radar Reflektor</b>	Tri-lens
<b>Fenderkissen</b>	8 x With stainless steel fender storage baskets (2x2 fenders)
<b>Festmacher</b>	ja
<b>TV</b>	Sharp (on a rails - electric up/down) with Strong Dolby Audio
<b>Radio-CD Spieler</b>	Sony Drive - S radio/cd-player / MP3 / WMA
<b>Lautsprecher im Pflicht</b>	2 x Sony
<b>Lautsprecher im Salon</b>	2 x Sony
<b>Uhr - Barometer</b>	ja
<b>Feuerloscher</b>	2 x 4 KG Saval
<b>Letzte Wartung Feuerloscher</b>	Need to be surveyed / renewed
<b>Automatische Löschsistem</b>	In Engine room (need to be surveyed / renewed)
<b>Weitere Info</b>	The cockpit table is completely removable
<b>Weitere Info</b>	Plenty of storage space under cockpit floor, across full width
<b>Weitere Info</b>	3 x Storage under the cockpit sofa







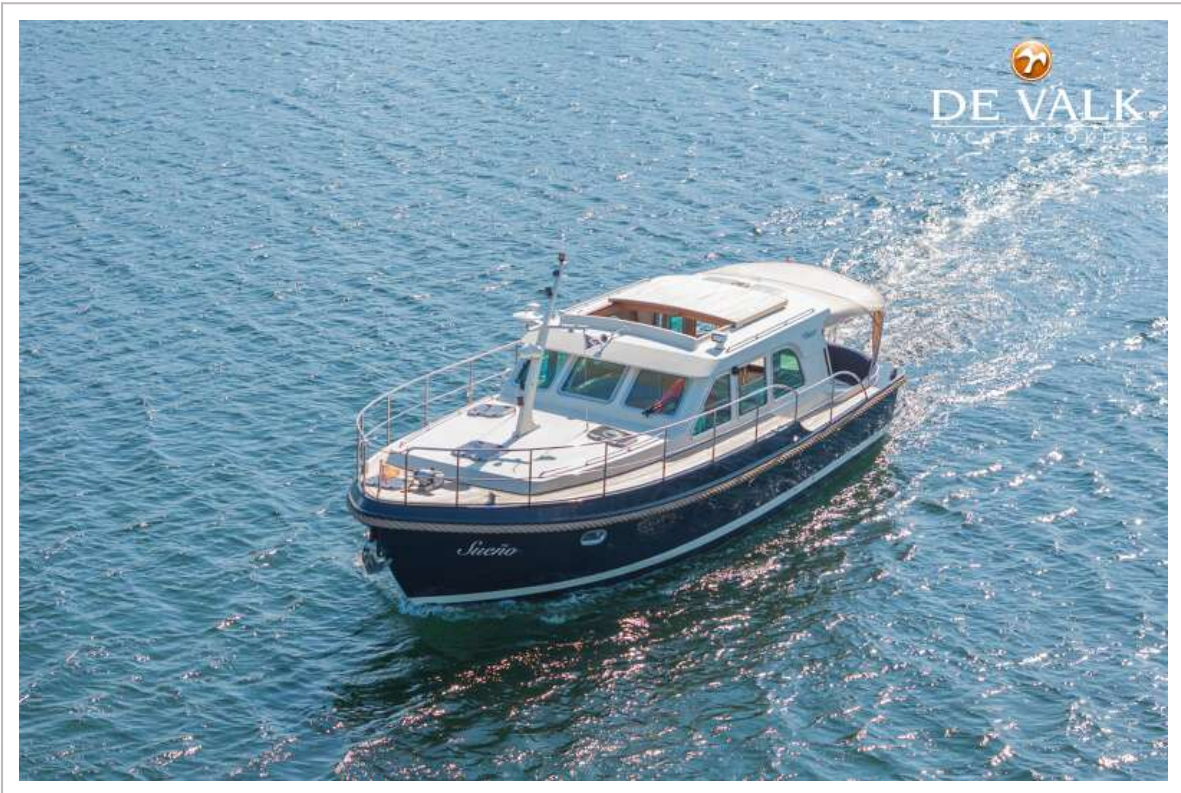
LINSSEN GRAND STURDY 380 SEDAN



LINSSEN GRAND STURDY 380 SEDAN



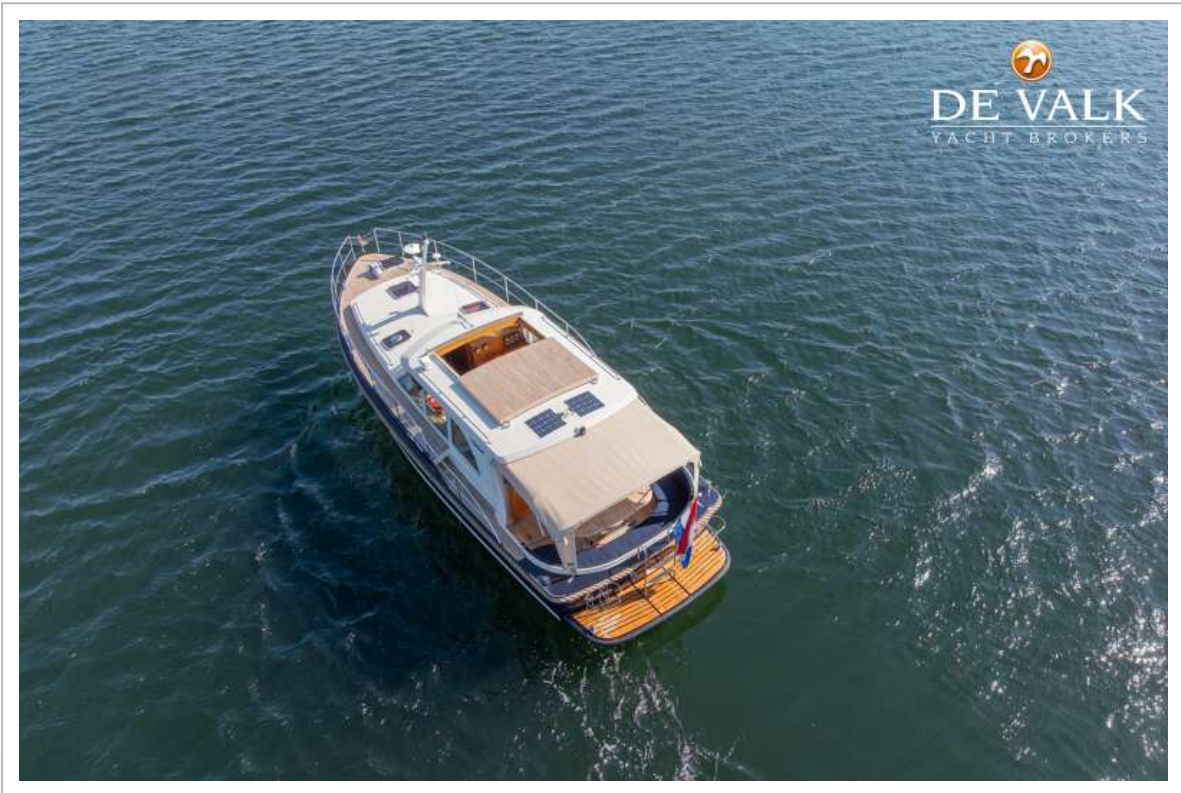
LINSSEN GRAND STURDY 380 SEDAN



# LINSSEN GRAND STURDY 380 SEDAN



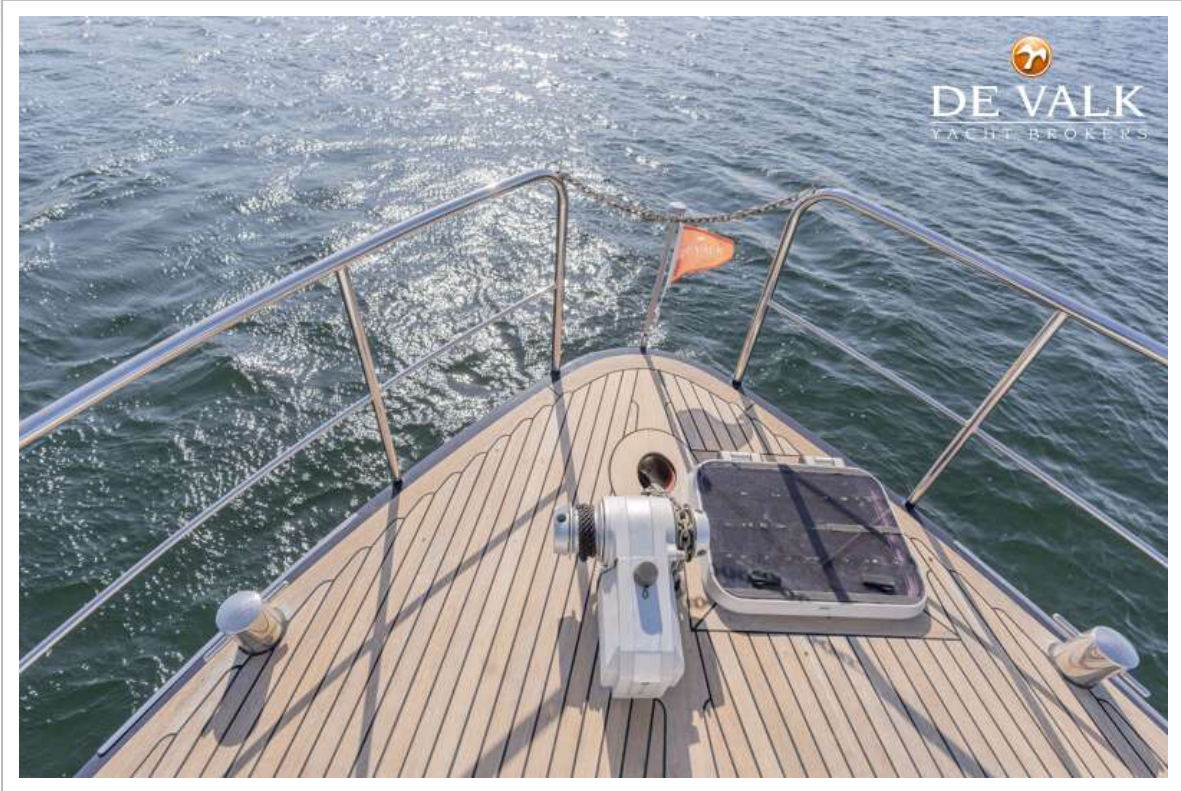
LINSSEN GRAND STURDY 380 SEDAN



LINSSEN GRAND STURDY 380 SEDAN



LINSSEN GRAND STURDY 380 SEDAN





LINSSEN GRAND STURDY 380 SEDAN



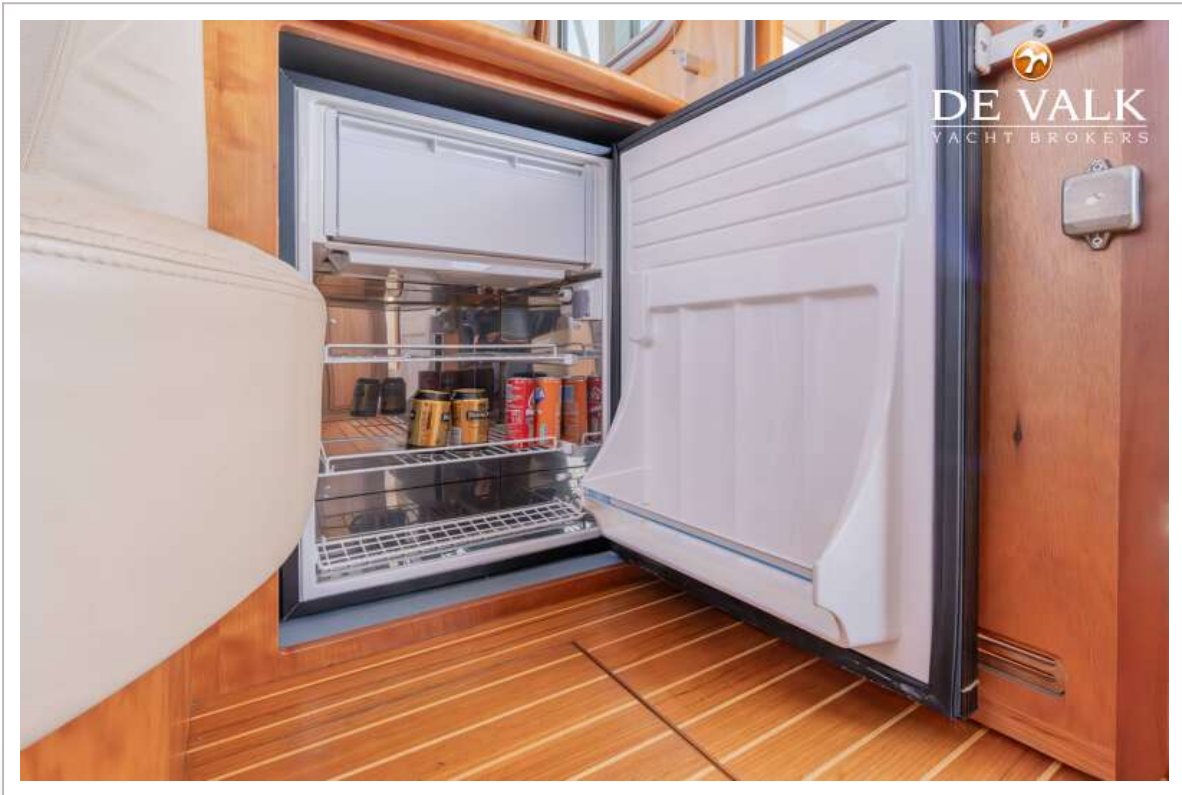
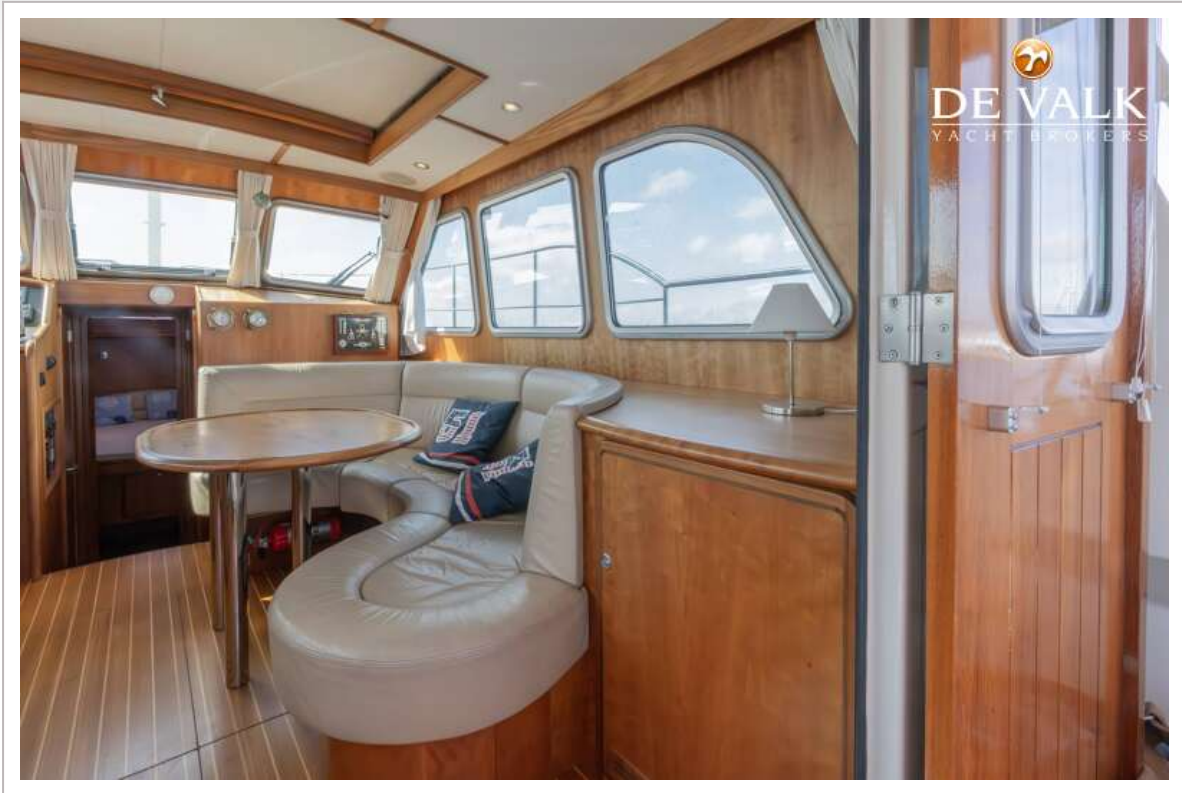
LINSSEN GRAND STURDY 380 SEDAN



# LINSSEN GRAND STURDY 380 SEDAN



LINSSEN GRAND STURDY 380 SEDAN



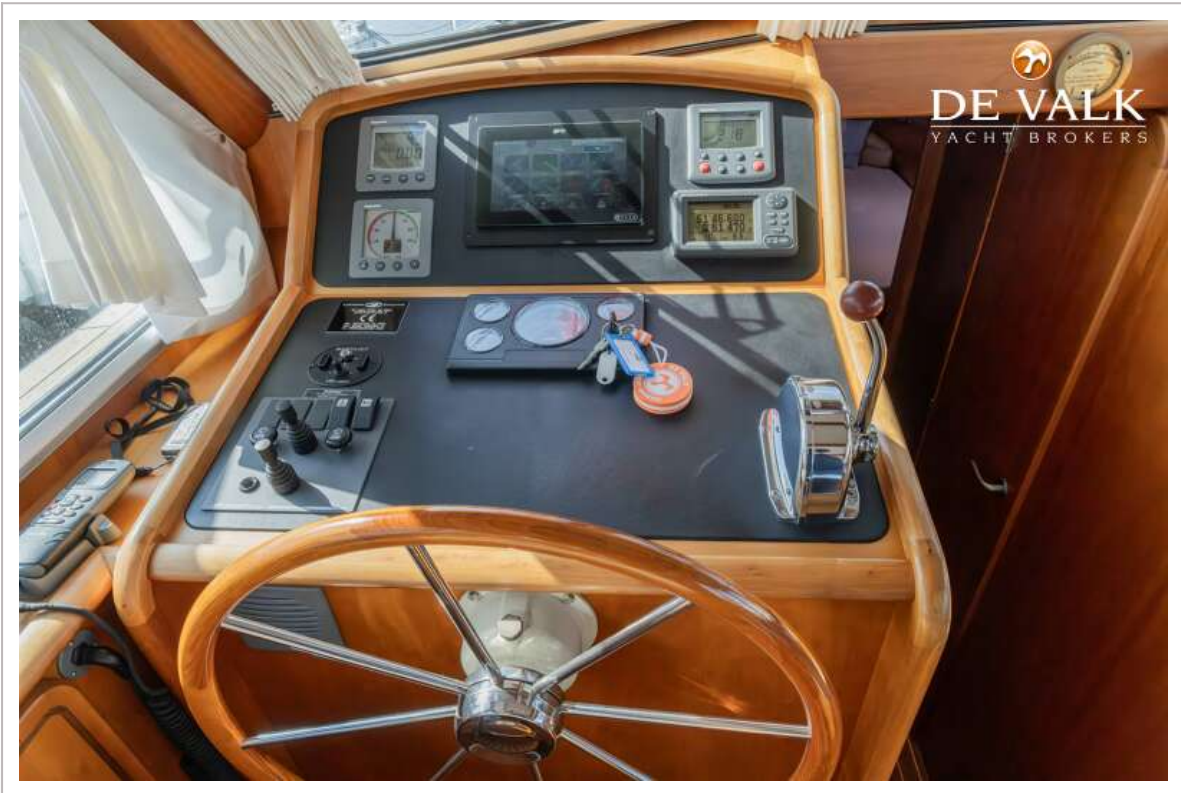
LINSSEN GRAND STURDY 380 SEDAN



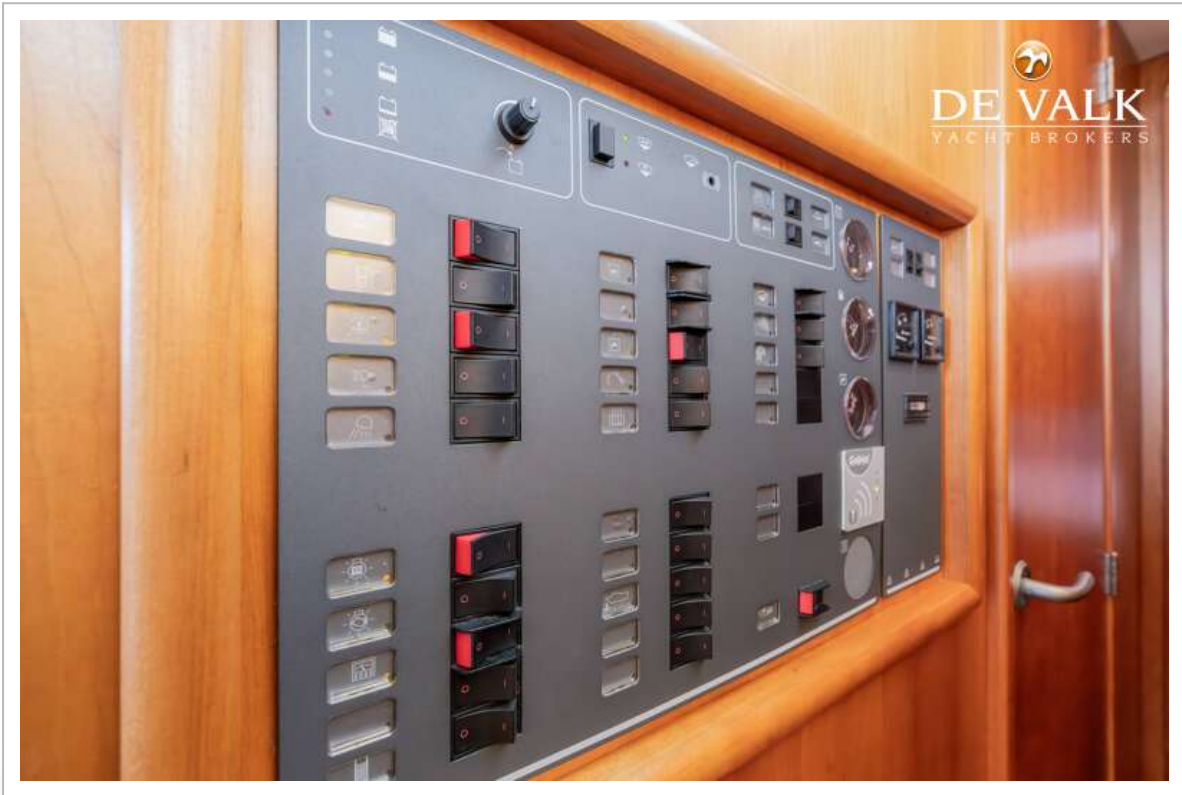
LINSSEN GRAND STURDY 380 SEDAN



LINSSEN GRAND STURDY 380 SEDAN

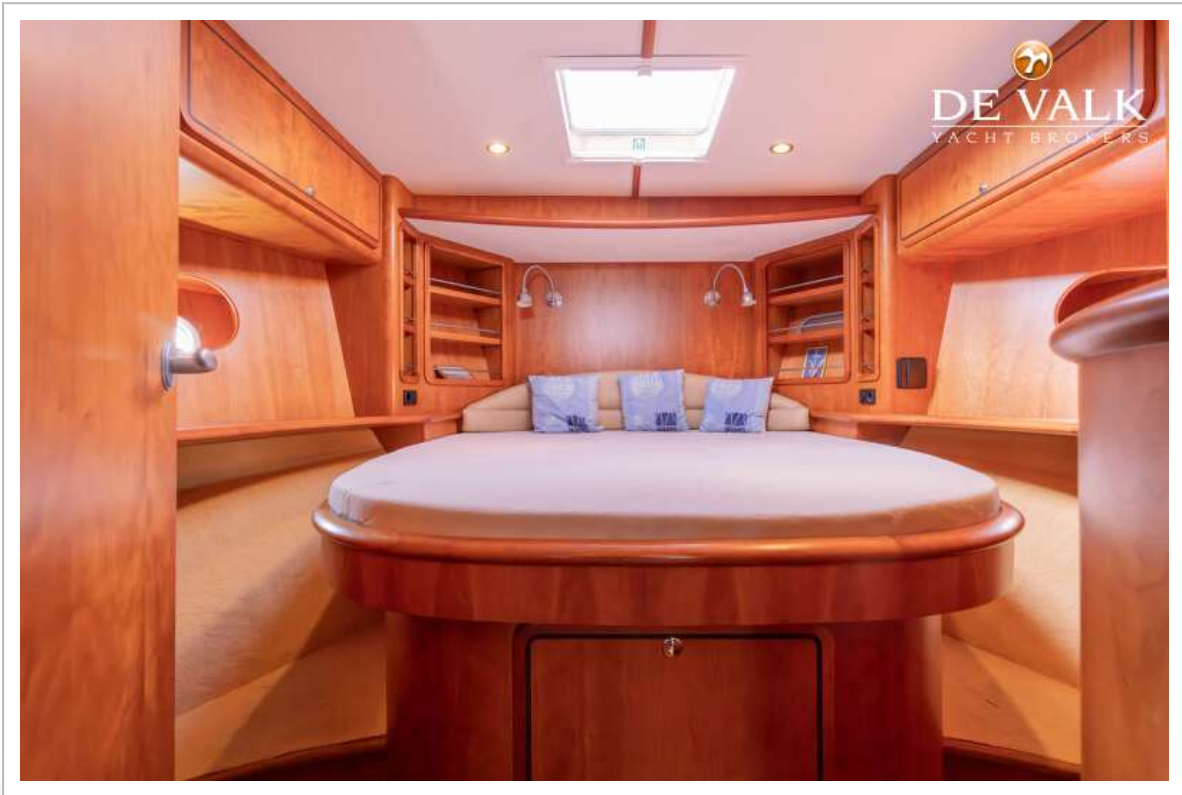


# LINSSEN GRAND STURDY 380 SEDAN

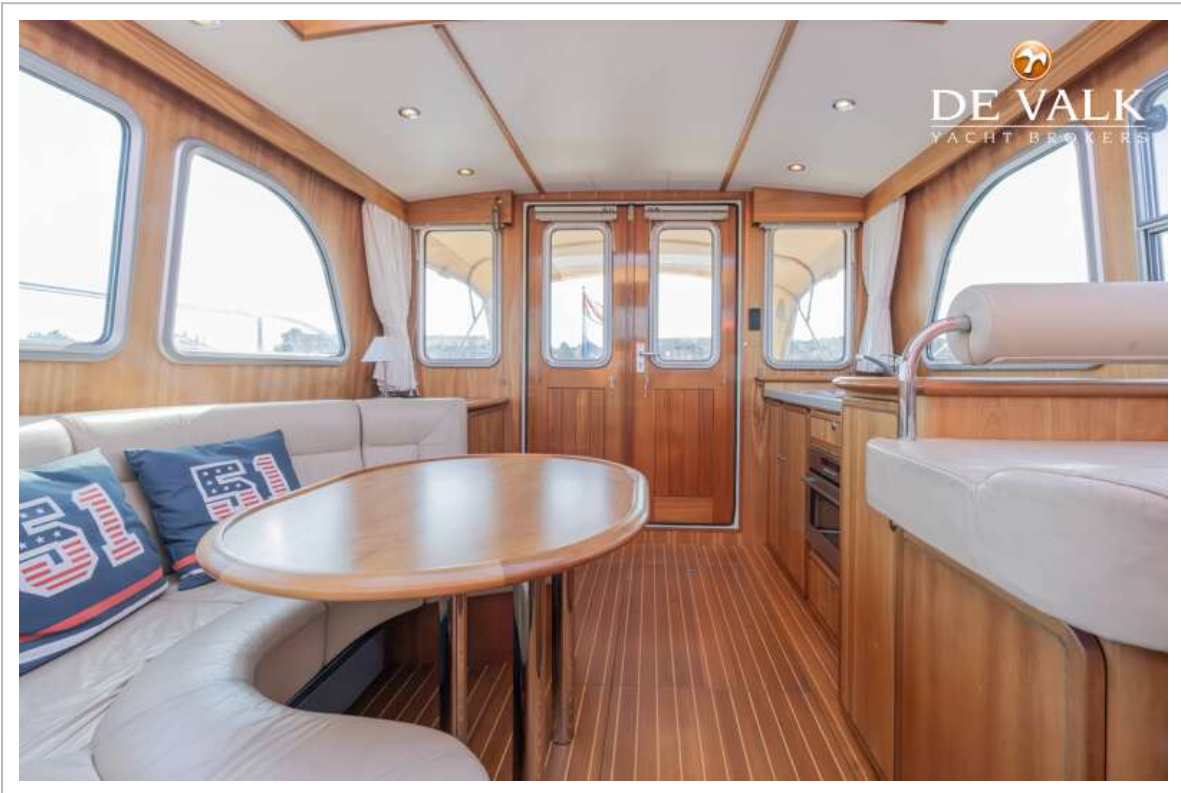
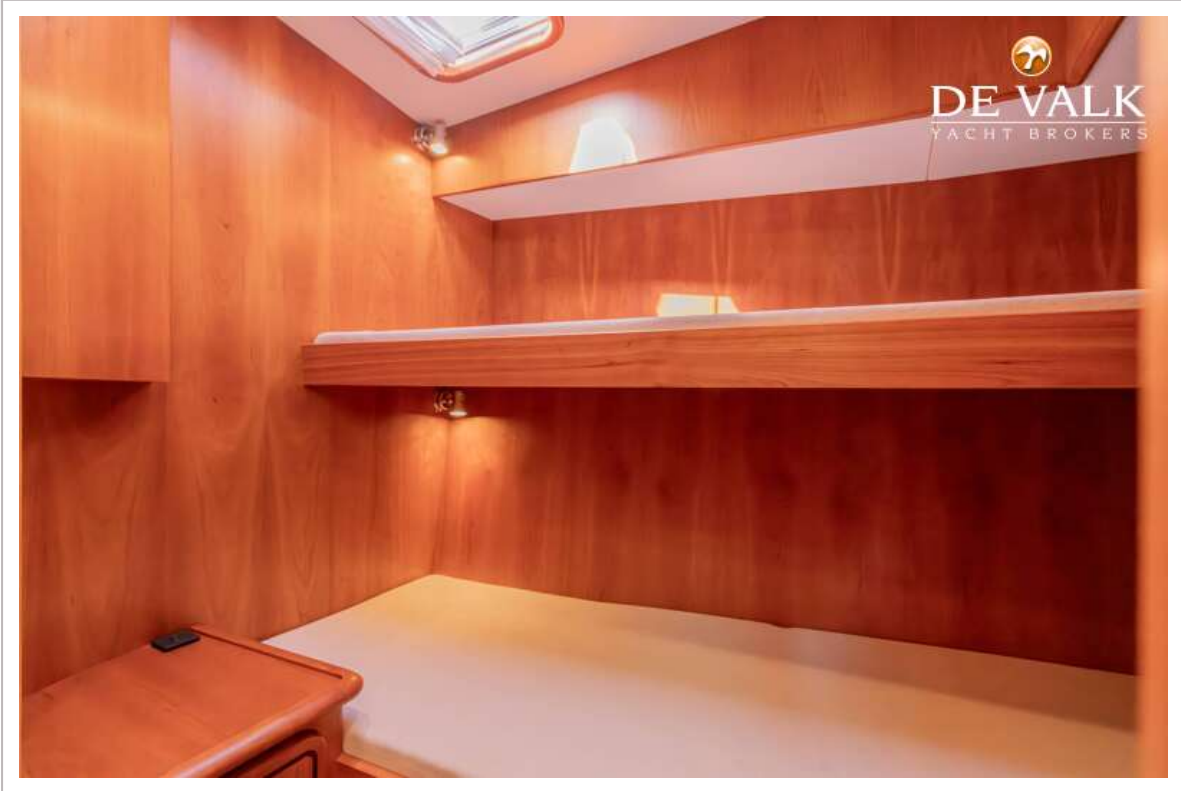




LINSSEN GRAND STURDY 380 SEDAN



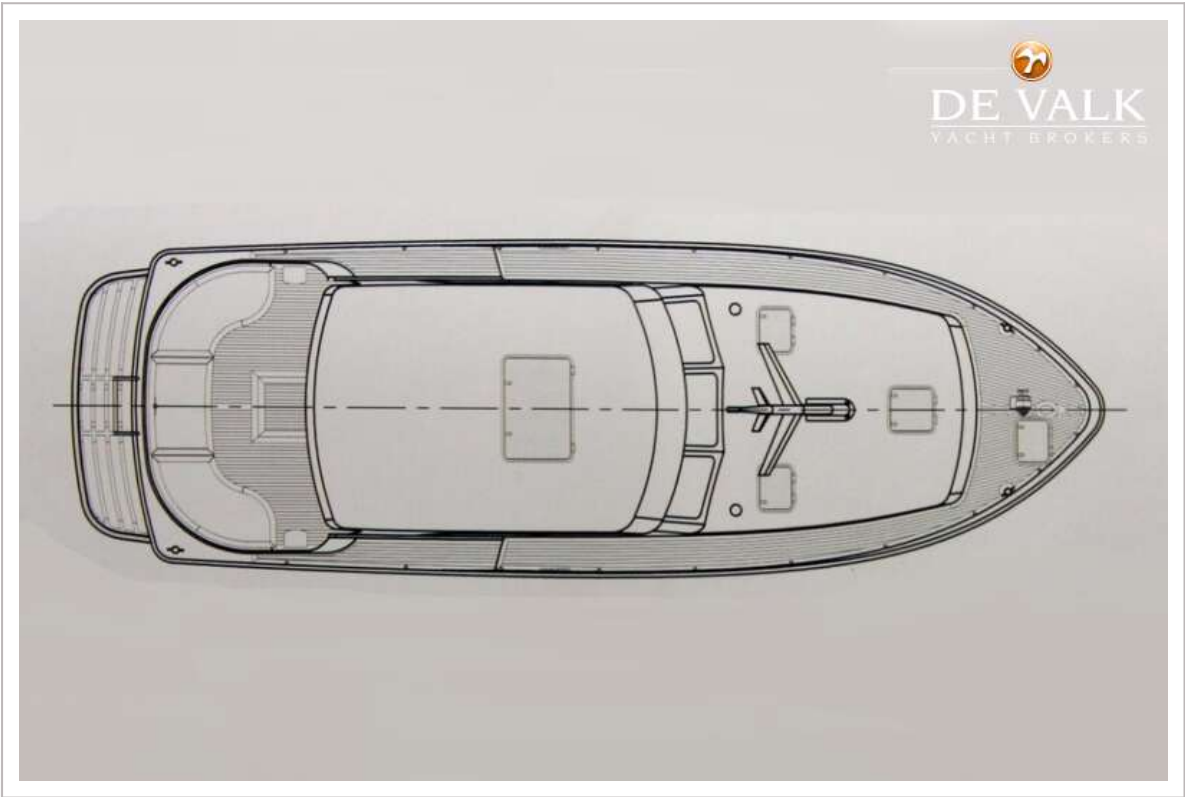
LINSSEN GRAND STURDY 380 SEDAN



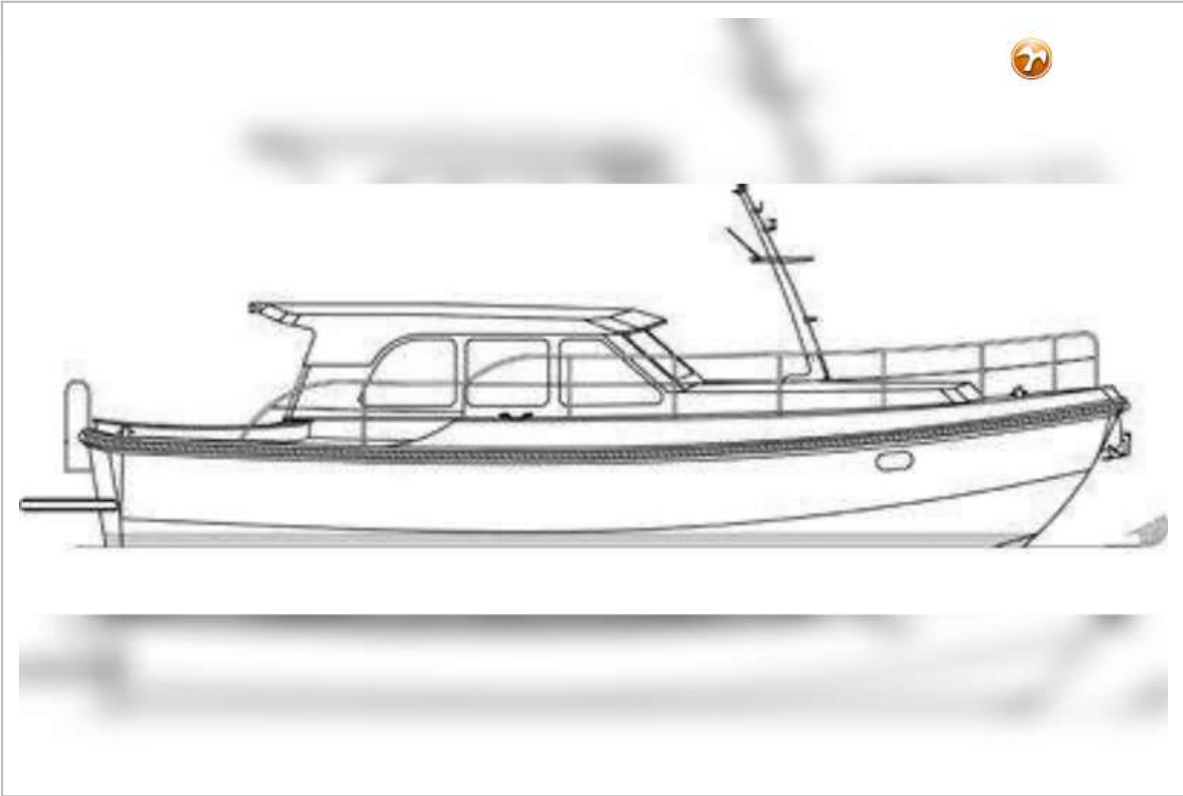
LINSSEN GRAND STURDY 380 SEDAN



# LINSSEN GRAND STURDY 380 SEDAN



LINSSEN GRAND STURDY 380 SEDAN



LINSSEN GRAND STURDY 380 SEDAN

