



DE VALK  
YACHT BROKERS



## HANSE 540E



DE VALK  
YACHT BROKERS

## BROKER'S COMMENTS

"Due to a change of plans of the first owner this practical immaculate Hanse 540e owner's version layout with three cabins for lots of comfort and practicality is now available. Her owners have maintained her to the highest standards. Enjoy an exceptional sailing experience in superior comfort.(dutch reefing system 2013)"

## SPEZIFIKATIONEN

<b>Maße</b>	16,08 x 4,95 x 2,43 (m)	<b>Baumeister</b>	Hanse
<b>Baujahr</b>	2008	<b>Kabinen</b>	3
<b>Material</b>	Epoxy und Schaumkern	<b>Schlafplätze</b>	7
<b>Motor(en)</b>	1 x Yanmar 4JH 4G diesel	<b>Pk/Kw</b>	110 (pk), 80,85 (kw)
	VERKAUFT	<b>Liegeplatz</b>	contact Hindeloopen

## KONTAKT

<b>Geschäftsstelle</b>	De Valk Hindeloopen	<b>Telefon.</b>	+31 514 52 40 00
<b>Adresse</b>	Oosterstrand 1	<b>Fax</b>	+31 (0)514 52 40 09
	8713 JS Hindeloopen	<b>E-Mail -Adresse</b>	hindeloopen@devalk.nl
	The Netherlands		

## DISCLAIMER

Obwohl wir uns der Richtigkeit, Vollständigkeit und Aktualität unserer Informationen größte Sorgfalt widmen, können aus den Informationen keine Rechtsansprüche abgeleitet werden.



## GENERAL

Epoxy/GRP sailingyacht Hanse 540e "Noordenwind", built in 2008 by Hanse, dim.: 16,10 x 4,95 x 2,40 meters, design by Judel & Vrolijk , CE Class A certification, Hull built with prepreg fiberglass fabrics in epoxy, vacuum cured with Corecell TM foam, high quality teakdeck, headway 27 meters, roundbilged hull, finkeel (cast iron) with 6,3 tonnes lead ballast in bulb, displacement: 19,7 tonnes, stainless steel fuel tank: 400 liters, stainless steel freshwater tank: 2 X 380 liters, 3 stainless steel sumptank each 40 liters with deck extraction, Jeva mechanical wheelsteering (double), emergency tiller, Dingy storage in the huge aft compartment.

## UNTERKUNFT

Modern high quality mahogany interior, 3 cabins each with a ensuite head and shower, manual toilet and a shower with drain, 2 aft cabins each with ample lighting and central heating, the forward cabin is a very large owners cabin with queen sized bed on port side, electric toilet and large shower, Webasto diesel powered central heating, very spacious saloon has a large sofa and opposite two extra comfortable chairs with retractable hockers, Isotherm large fridge of aprox. 130 liters top and front loader with light, Isotherm freezer front loader capacity approx 80 liters, Techimpex oven with a 3-burner gas stove, a separate Sharp R-239 microwave oven, hot water system with a 40 liter boiler heated by engine and 220v.

## MOTOR(EN)

Yanmar 4JH4G 110hp diesel engine with indirect cooling system, approximately 450 running hours, mechanical gearbox, 3 bladed propeller, cruising speed approx. 8 knots, consumption approx. 7 liter/hour, manual and electric bilge pumps, 12/220 Volt system, 310 Ah gel batteries, 85ah start battery all 2008, automatic battery charger, Mastervolt inverter, Maxpower retractable 6kw electric bowthruster, shore power with cable connection.

## NAVIGATION

Plastimo contest liquid compass, Simrad Ap24 log, Simrad Ap24 echo sounder, Simrad Ap24 windset port and starboard side, 2 Simrad RS82 VHF, Simrad 4kw range radar, Simrad autopilot, Simrad GPS, 2 Simrad GB40 10" screen chart-plotters one outside and one inside with C-map NT-Max en-M070 maps, 2010 Furuno NX-300 screen navtex with GPS, Comar class B AIS, Audio sonic TV/DVD + JBL speaker system ready and compatible for I phone, I pad and other MP3's.

## AUSRUSTUNG

Multiple adjustable sprayhood, cockpit tent small (2012) and big (2009) , Bimini (2011), fenders, warps, safety lines on deck, folding out 25kg Delta anchor with electric Lewmar windlass with 10mm/60m stainless-steel chain, boarding ladder, huge adjustable bathing platform, hot/cold deck shower, Trilens radar-reflector, fixed perspex cockpit table, floodlight with remote control, inflatable joon and 30meters rescue sling, side opening gates in sea railing.

## TAKELWERK

Sloop-rigged, SeldÅ©n aluminum double spreader mast, specially altered and strengthened boom for easy storage, SeldÅ©n



# HANSE 540E

400S genoa furler, Seldén rod kicker, North-sails Norlam D-cut fully battened mainsail, North-sails Norlam D-cut furling jib, Lewmar winches, traditional reefing system with three reefs and lazy jacks (dutch reefing system 2013), Split backstay with backstay adjuster, cover for furling genoa and main sail, 2x Lewmar 54st one electric sheet winches and one mechanical, 2x Lewmar 46st halyard winches, all halyards and sheet lead aft into the cockpit, she is easily handled with a small crew.



# HANSE 540E





# HANSE 540E



# HANSE 540E





# HANSE 540E





# HANSE 540E





# HANSE 540E



# HANSE 540E





# HANSE 540E



# HANSE 540E





# HANSE 540E





# HANSE 540E

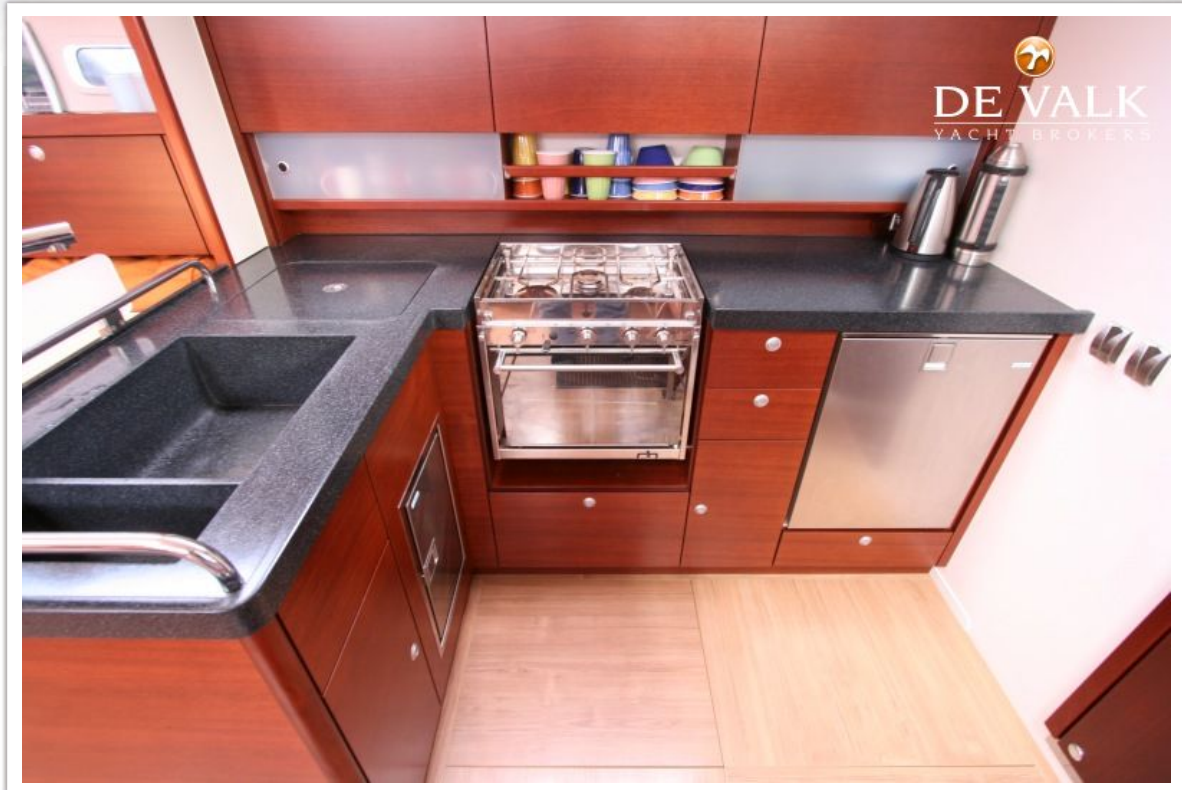


# HANSE 540E



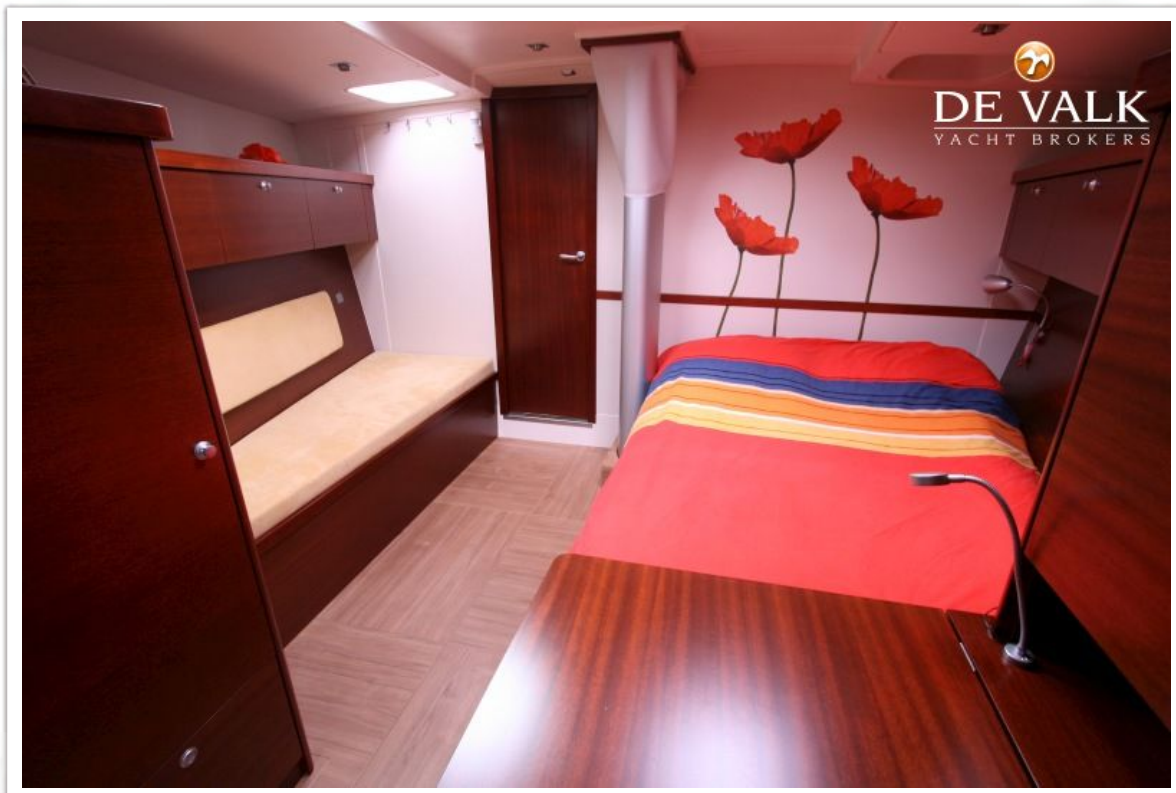
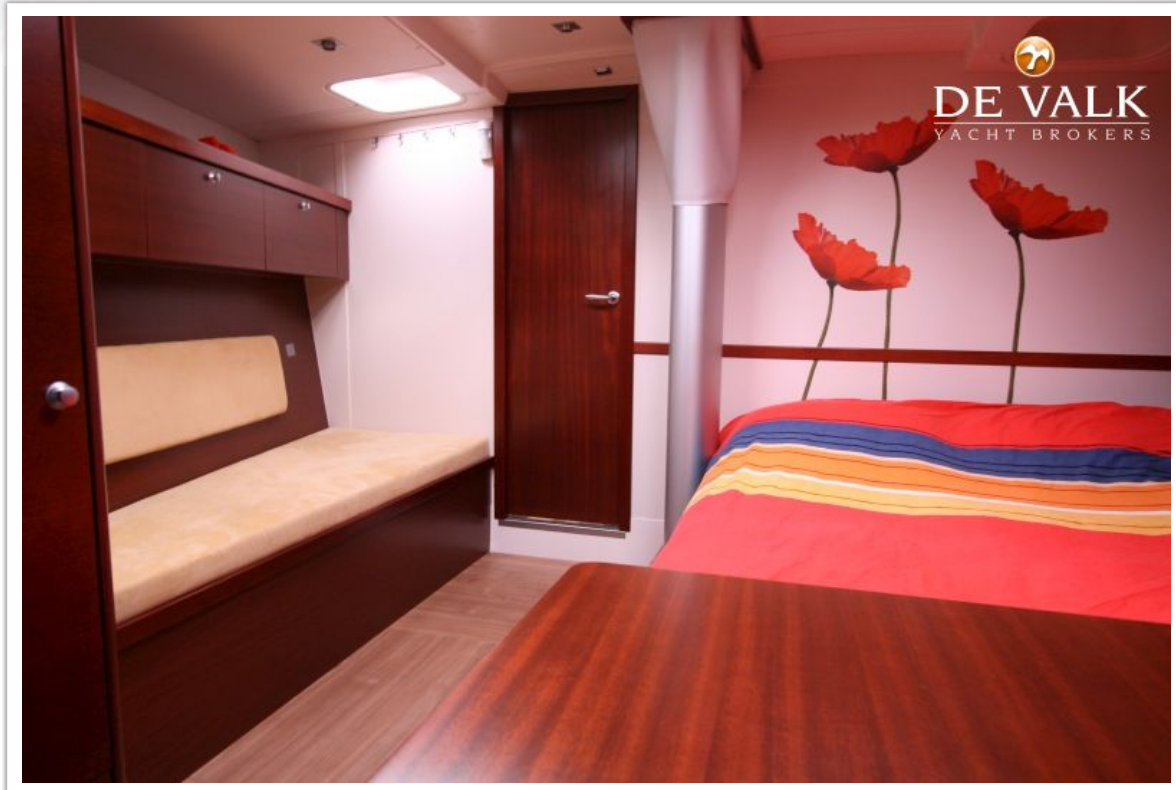


# HANSE 540E

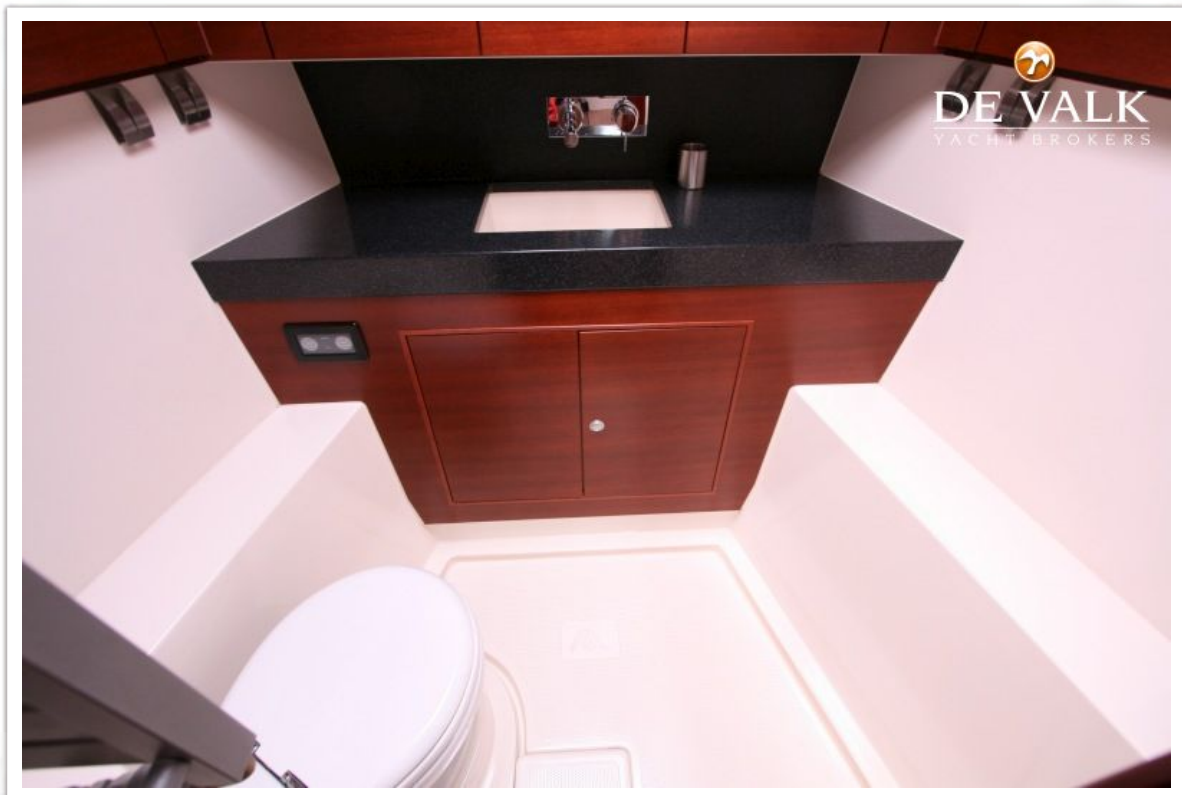
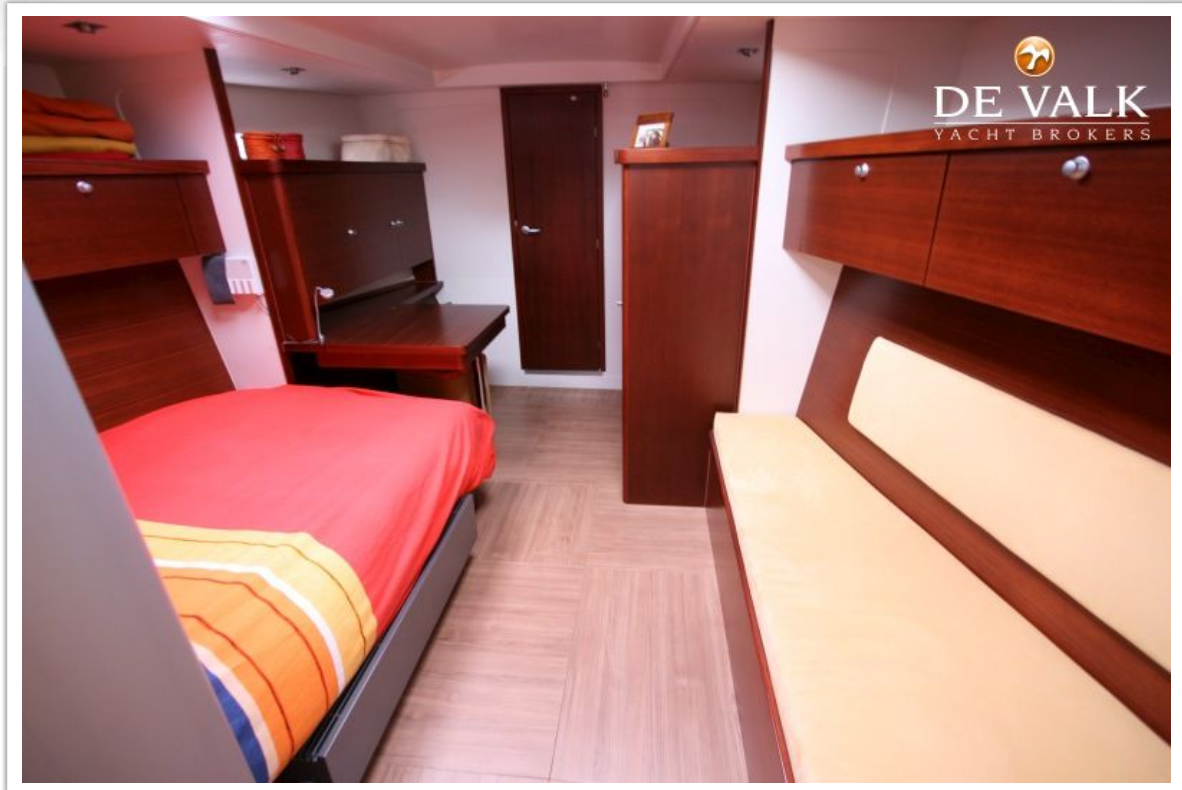




# HANSE 540E



# HANSE 540E



# HANSE 540E

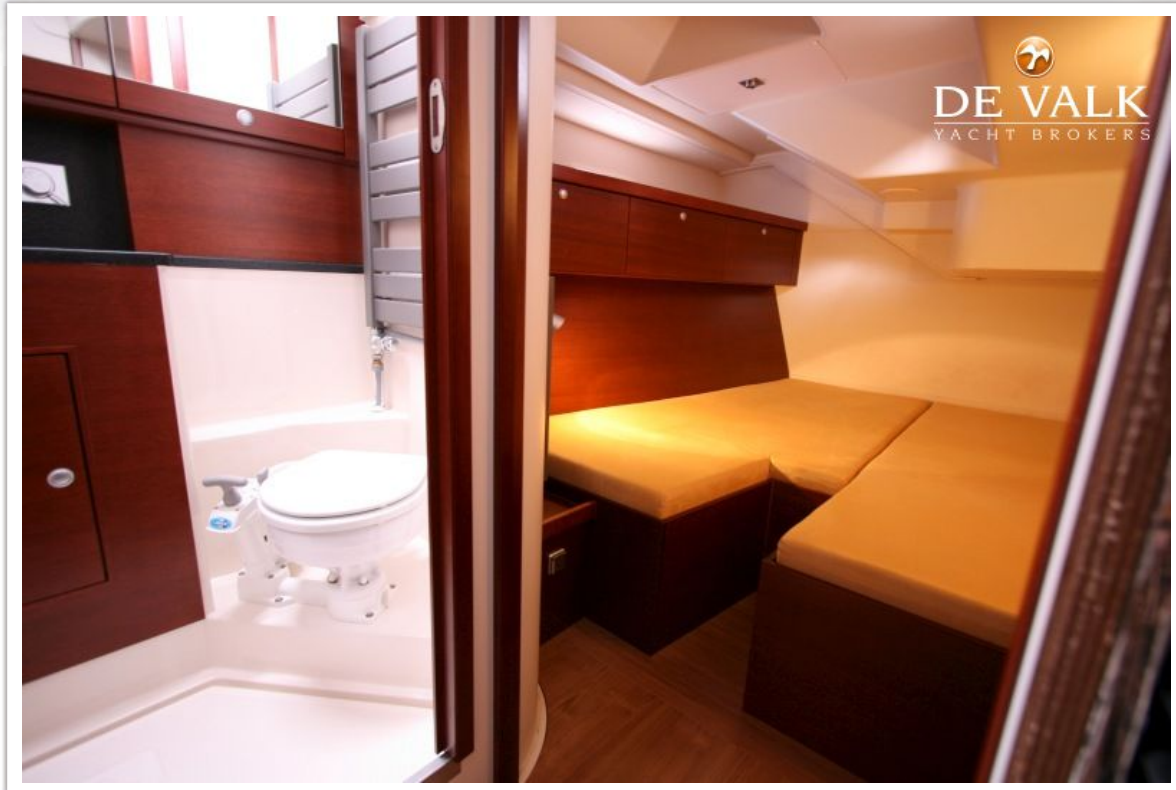




# HANSE 540E



# HANSE 540E



# HANSE 540E

