



DE VALK
YACHT BROKERS



COLIN ARCHER 40



DE VALK
YACHT BROKERS

KOMMENTARE DES MAKLERS

Lunni the Colin Archer type CA40 has a hull exactly like the original design. It is build by Finnish craftsmen at Haukilahden Veneveistamo boatyard . The GPR construction is dimensioned to withstand practically anything you can confront on a circumnavigation. Second owner has had Lunni for 19 years and 2018 it participated in the ARC, with average speed of 6.1 knots across the Atlantic. Lots of upgrades since 2018 and 2024 new epoxy, antifouling, batteries, upholstery etc.

Henrik Trygg

TECHNISCHE DATEN

Maße	12.00 x 4.20 x 1.90 (m)	Werft	Haukilahden Veneveistamo/Lydman
Baujahr	1998	Kabinen	2
Material	GFK	Kojen	7
Motor(en)	1 x Nanni diesel	PS/kW	62.00 (PS), 45.63 (kW)
Verkaufspreis	€ 185.000 (MwSt. Bezahlt)	Liegeplatz	contact sales office

KONTAKT

Verkaufsbüro	De Valk Stockholm	Telefon	+46 70 552 65 45
Adresse	Stockholm Region Stockholm Sweden	E-Mail	stockholm@devalk.nl

HAFTUNGS AUSSCHLUSS

Diese Angaben erfolgen nach bestem Wissen, können jedoch nicht garantiert werden.



COLIN ARCHER 40

ALLGEMEIN

Modell	COLIN ARCHER 40
Typ	Segelyacht
Rumpflänge (m)	12,00
Wasserlinienlänge (m)	10,00
Breite (m)	4,20
Tiefgang (m)	1,90
Baujahr	1998
Lancierung	2001
Werft	Haukilahden Veneveistamo/Lydman
Land	Finnland
Entwerfer	Colin Archer
Gewicht (t)	17
Ballast (Ton)	App 8
CE Norm	A
Rumpfmateral	GFK
Haut-dicke Rumpf (mm)	Minimum thickness 30mm
Art Kiel	Long
Antifouling (Jahr)	2024
Treibstofftank (Liter)	200
Treibstof Tagestank (Liter)	80
Trinkwassertank (Liter)	3x200L
Fäkaelien Tank (Liter)	90
Pinne	ja
Weitere Info	LOA 14,5 incl bowsprit

UNTERKUNFT

Kabinen	2
Kojen	7
Ruderhaus	ja
Standhöhe Salon (m)	2



Heizung	Webasto Water Central heating 2022
Heizung 2	Refleks stove
Klima Anlage	Webasto Blue cool S series 2020
Achterkabine	ja
Speisezimmer	ja
Kombüse	ja
Spülbecken	ja
Herd	ja
Ofen	ja
Gas-Alarm	ja
Mikrowelle	ja
Kuhlschrank	Dometic Electric+Gas
Warmwasser System	30
Wasserdruck System	ja
Hand und/oder Fusspumpe	ja
Eignerkabine	ja
Toilet	ja
Dusche	ja
Gästekabine 1	ja

MASCHINEN

Motoranzahl	1
Marke	Nanni
PS	62
kW	45.63
Kraftstoffart	Diesel
Installiert im Jahr	1998
Höchstgeschwindigkeit (Kn)	6
Marschgeschwindigkeit (Kn)	7
Motorstunden	1800
Kühlungssystem Motor	Freshwater



Antrieb	Schraubenwelle
Motor bedienung	ja
Gewende getriebe	Hurth Renovated2016
Bugschraube	Vetus
Propeller Typ	Fixed bronze + spare
Hand Bilgenpumpe	2 Whale gusher
Elektrische Bilgenpumpe	ja
Generator	2 Alternators serviced 2022
Batterien	ja
Starterbatterie	100ah
Versorgungsbatterie	800ah
Bugschraubebatterie	220ah
Batterie Ladegerat	Mastervolt
Umwandler	12v to 220v - 1500W and 300W
Solar panele	ja
Landstrom	220v
Trenn transformator	ja
Weitere Info	Isolated Transformer Victron 3600w
Weitere Info	New heatexchanger 2022
Weitere Info	Fuel injector and startermotor serviced 2022

NAVIGATION

Kompass	ja
Elektrisches Kompas	Raymarine EV 1 2017
Multi Control Display	Raymarine Axiom pro 2021
Tiefenanziege	ja
Logge	ja
UKW	2018
Portabel UKW	ja
Autopilot	Raymarine ev 200 + linear drive units (one new)
Windfahne Steuerung	Windpilot



Ruderwinkel Anzeige	ja
Radar	Raymarine Quantum 2018
Radar/GPS/Plotter	ja
AIS Transceiver	ja
Epirb	2018
Navigation Beleuchtung	ja
Weitere Info	Iridium GO 2018
Weitere Info	Handheld Iridium

AUSRÜSTUNG

Bimini	ja
Fensterabdeckung	ja
Anker	Bow Bruce 30kg Electric windlass
Ankerkette	100m x10mm
Anker 2	Stern Bruce 15kg Manual
Ankerwinde	ja
Beiboot	Quicksilver 2,5 m
Rettungsinsel	Lalizas iso raft 2018
Rettungsinsel (Pers)	6
Schwimvesten	4
Sicherheits Rustung	ja
Rettungsboje	2
Markierboje	ja
Sicherheitsleine auf Deck	ja
Leinenschneider	ja
Horn	ja
Fenderkissen	ja
Festmacher	ja
TV	ja
DVD Spieler	ja
Uhr - Barometer	ja



Feuerloscher	2
Weitere Info	Hard Pilothouse
Weitere Info	Weather station LCJ Capteurs 2023

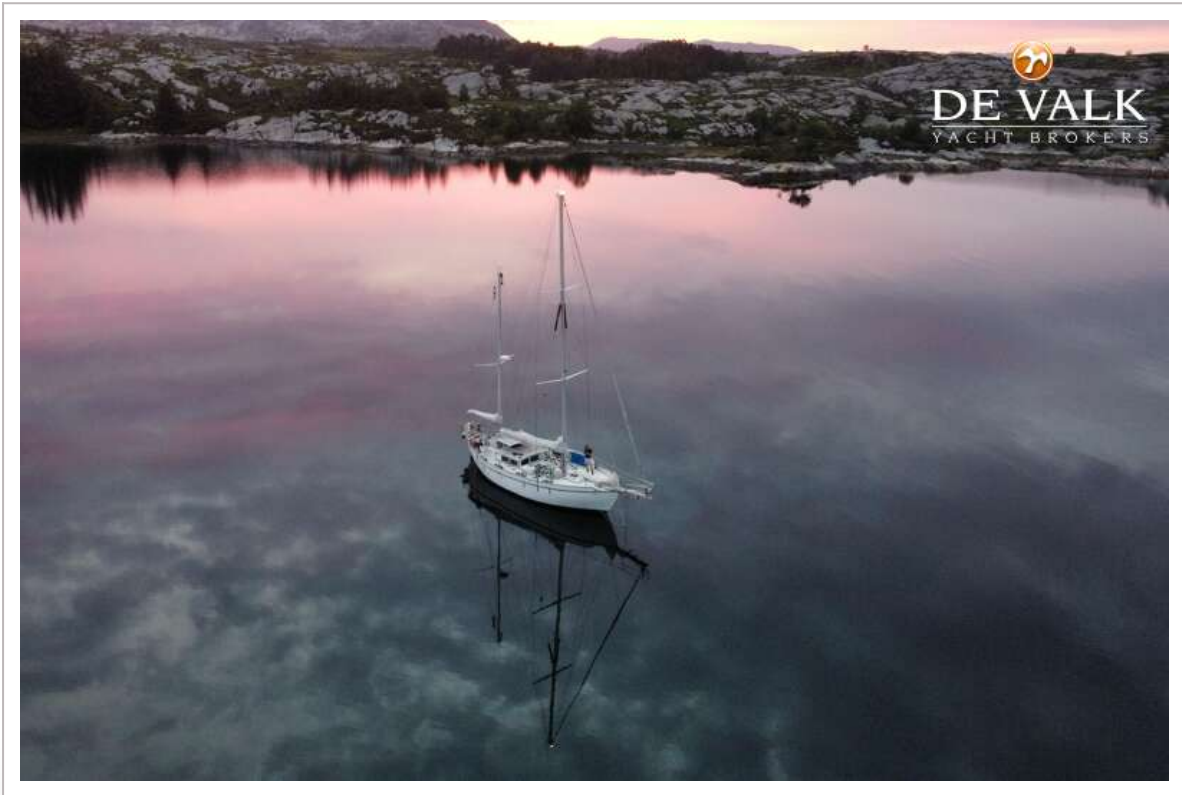
RIGG

Rig	Ketch
Marke Mast	John Mast
Material Mast	Aluminium
Großsegel	Elvstrom Dacron 35m2 +North Laminated 30m2
Großsegel-Persenning	ja
Großstagesegel	ja
Besan	Elvstrom 15m2
Besansegel-Persenning	ja
Fock	Dacron 35m2 + North Sails Laminated 35m2
Gennaker	100m2
Stagesegel	15m2 selftack
Selbstwende Anlage	ja
Reff Vorrichtung	ja
Spi-Baum	2



COLIN ARCHER 40

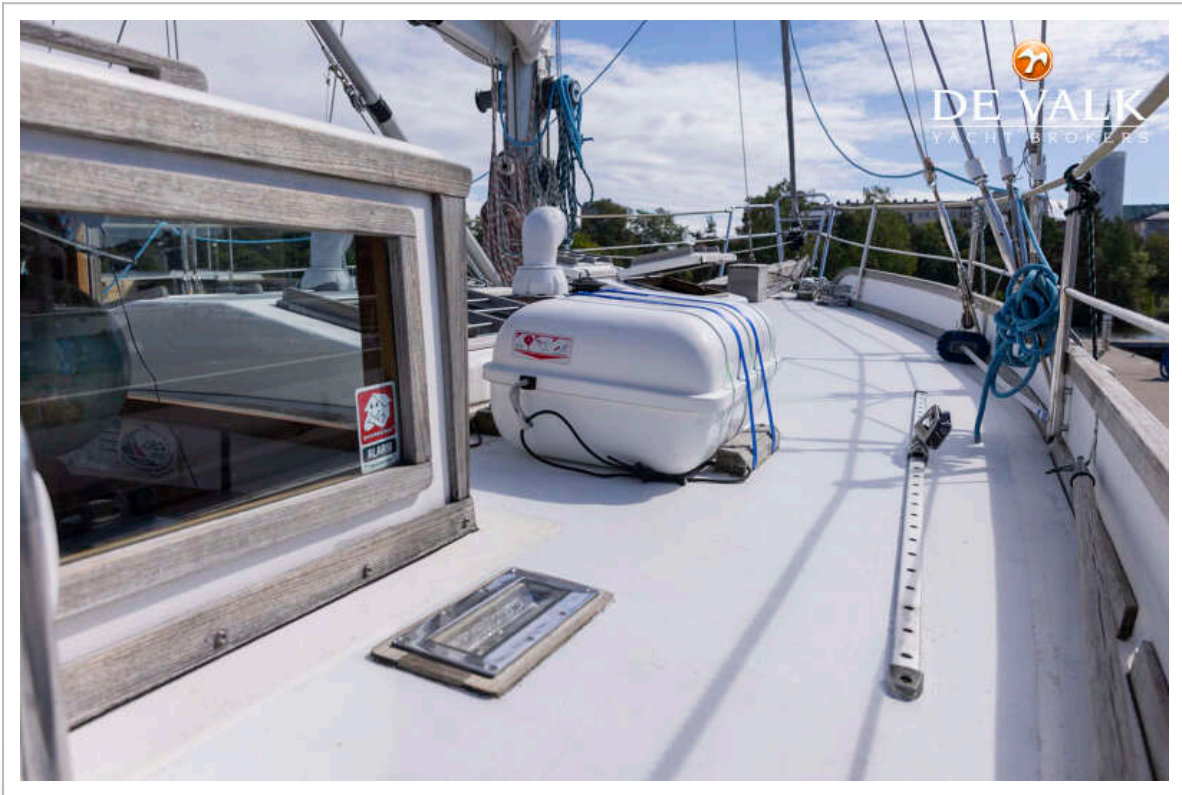




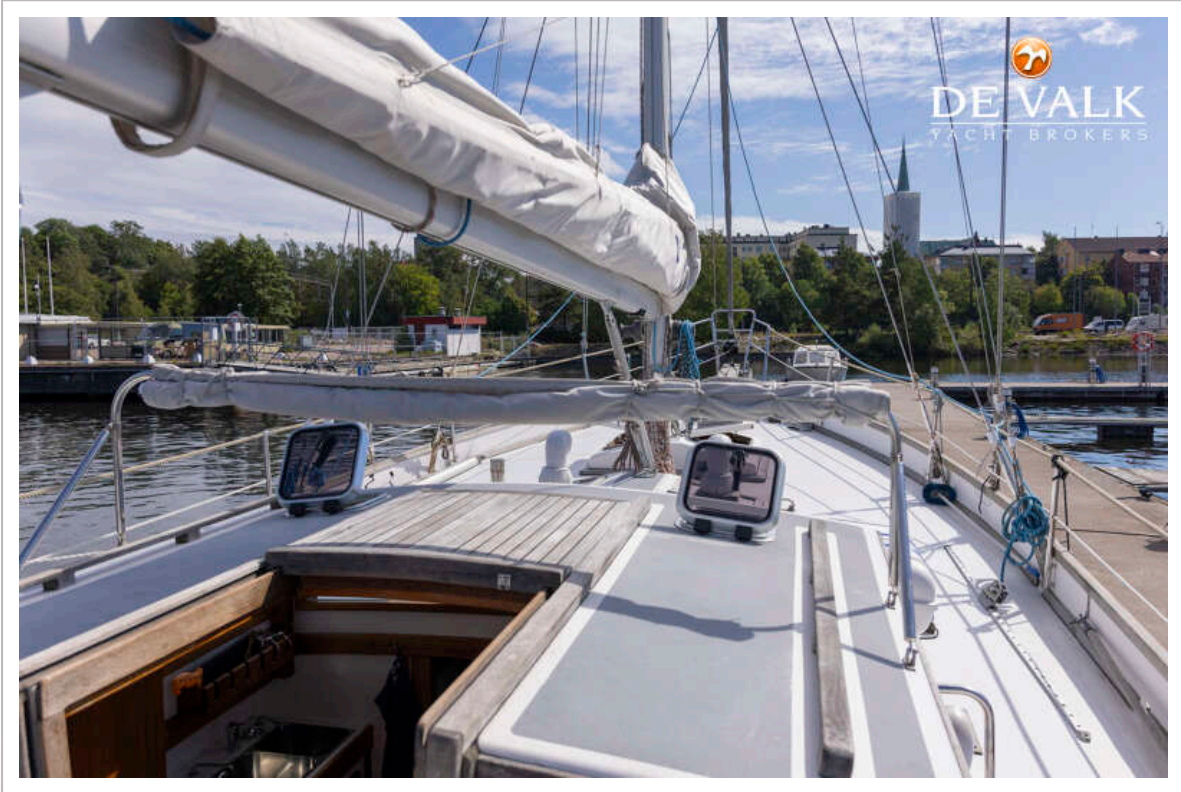
COLIN ARCHER 40



COLIN ARCHER 40



COLIN ARCHER 40



COLIN ARCHER 40



COLIN ARCHER 40



COLIN ARCHER 40




DE VALK
YACHT BROKERS



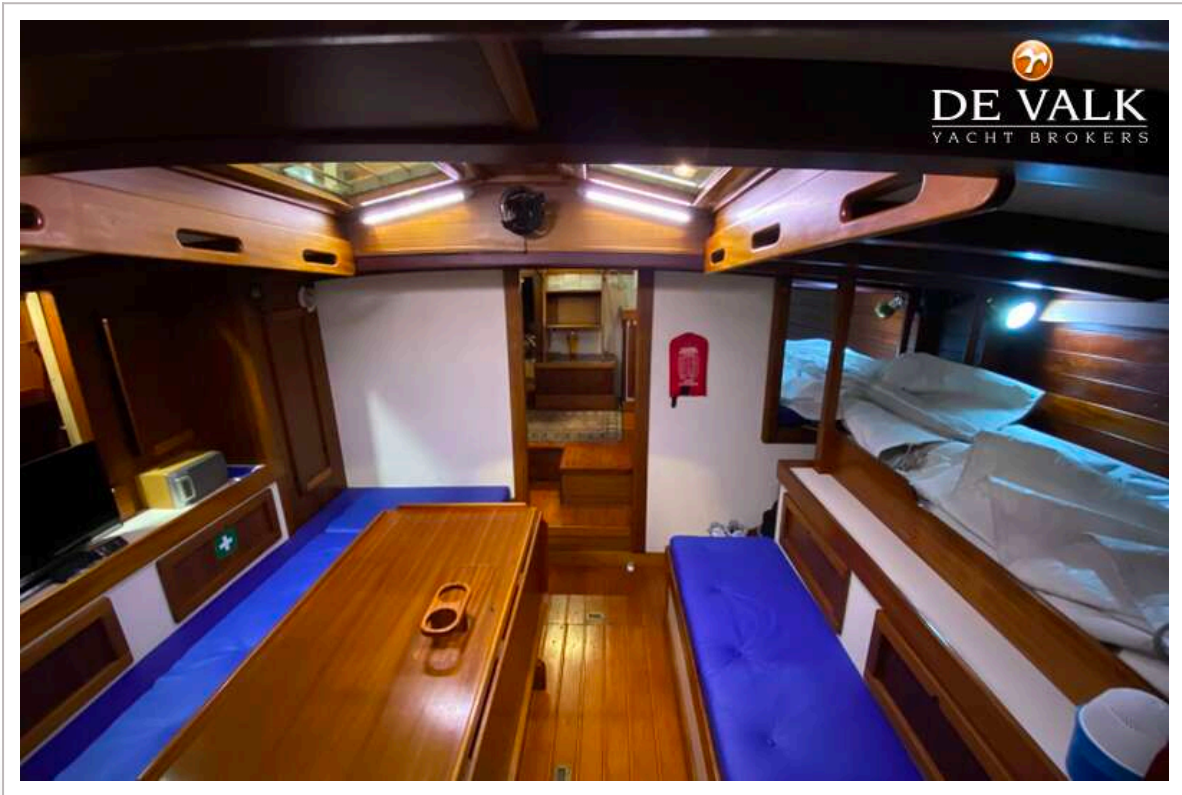

DE VALK
YACHT BROKERS



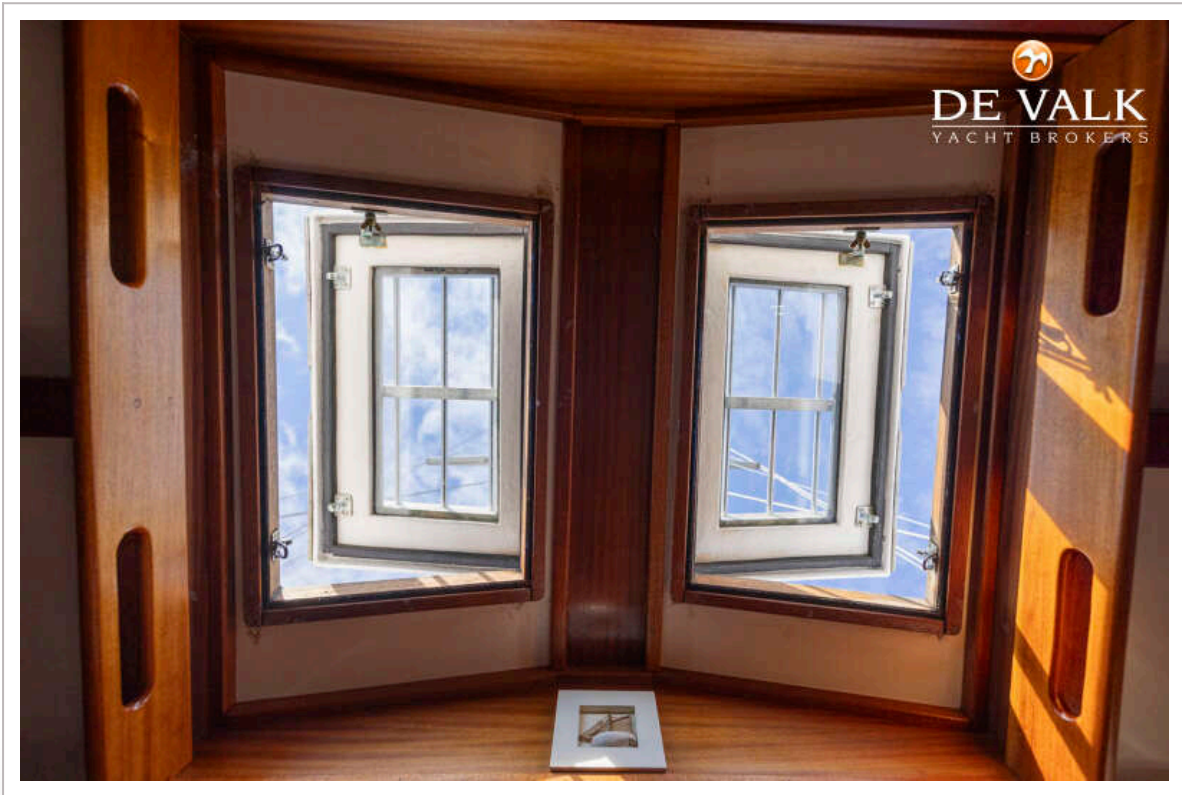
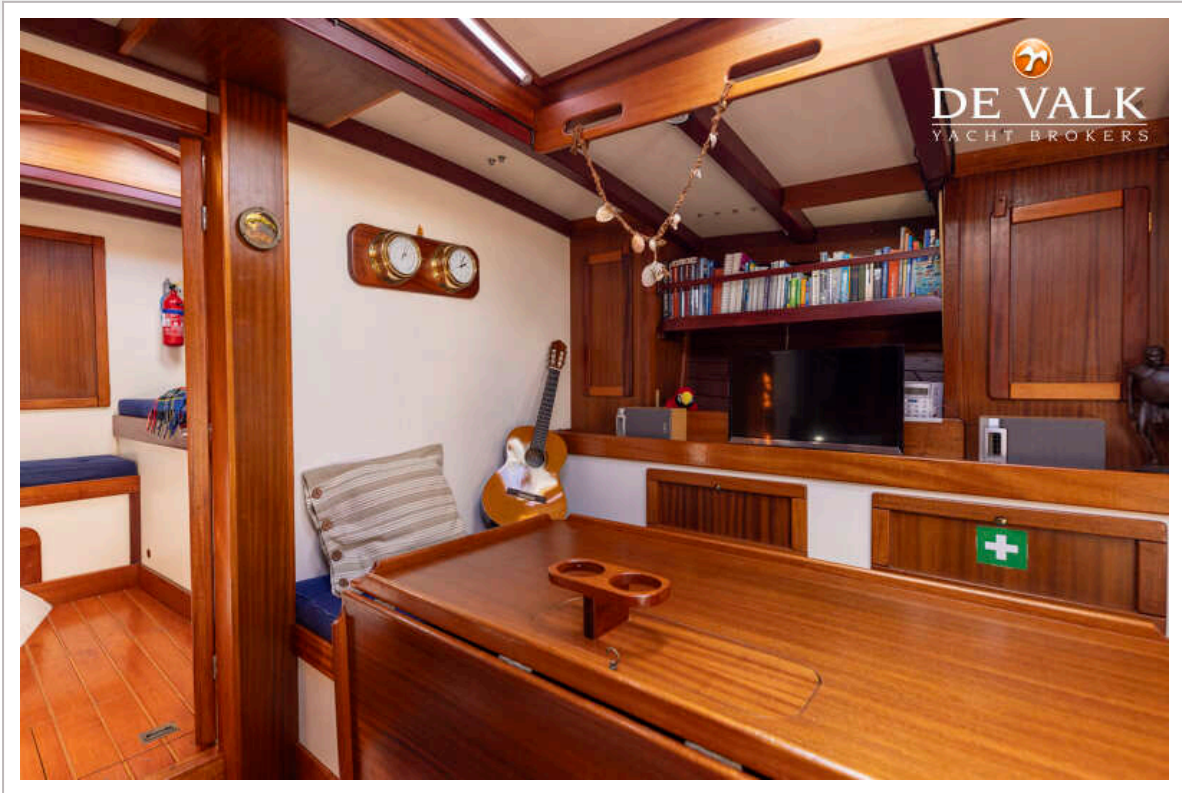
COLIN ARCHER 40



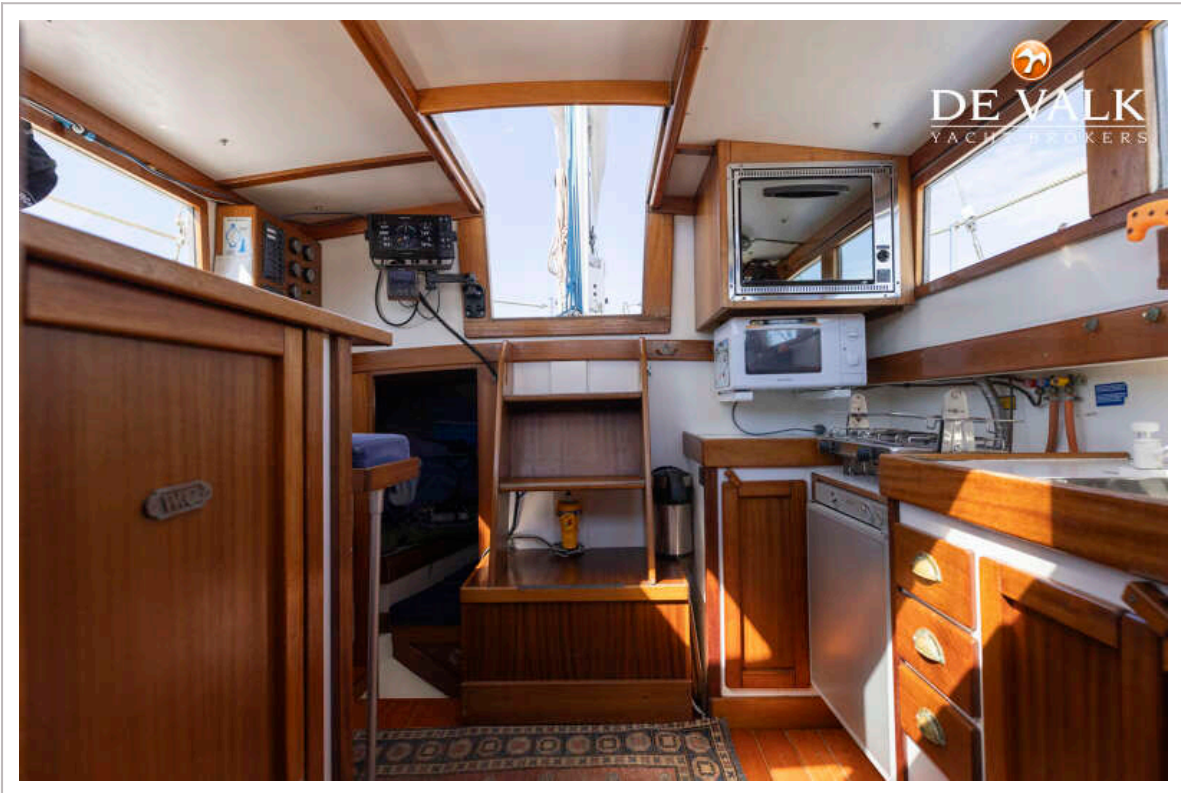
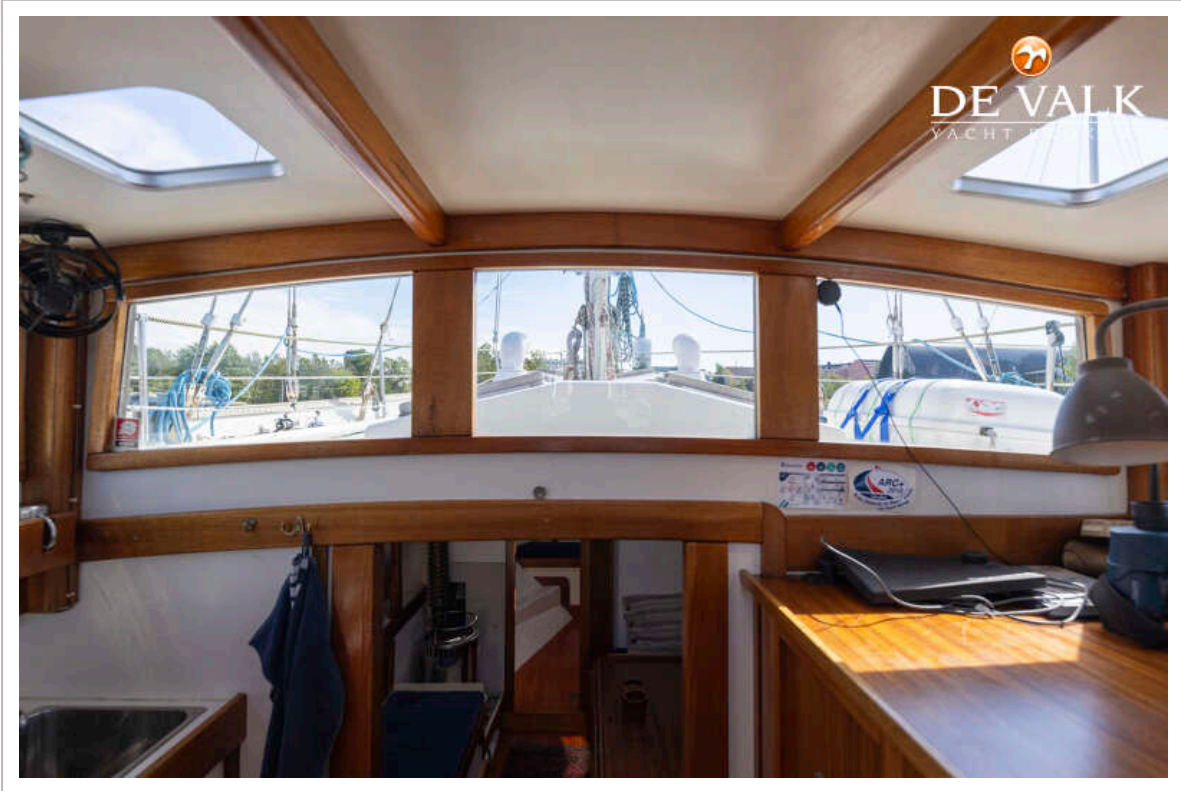
COLIN ARCHER 40



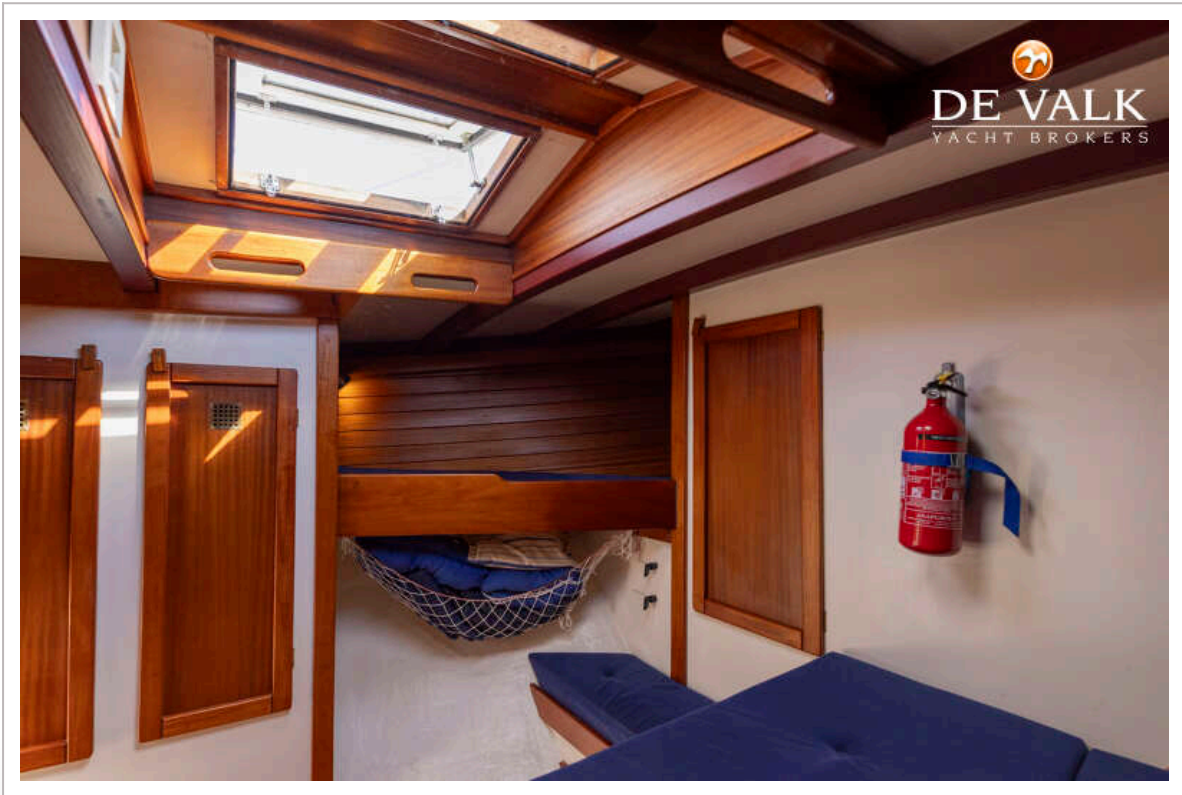
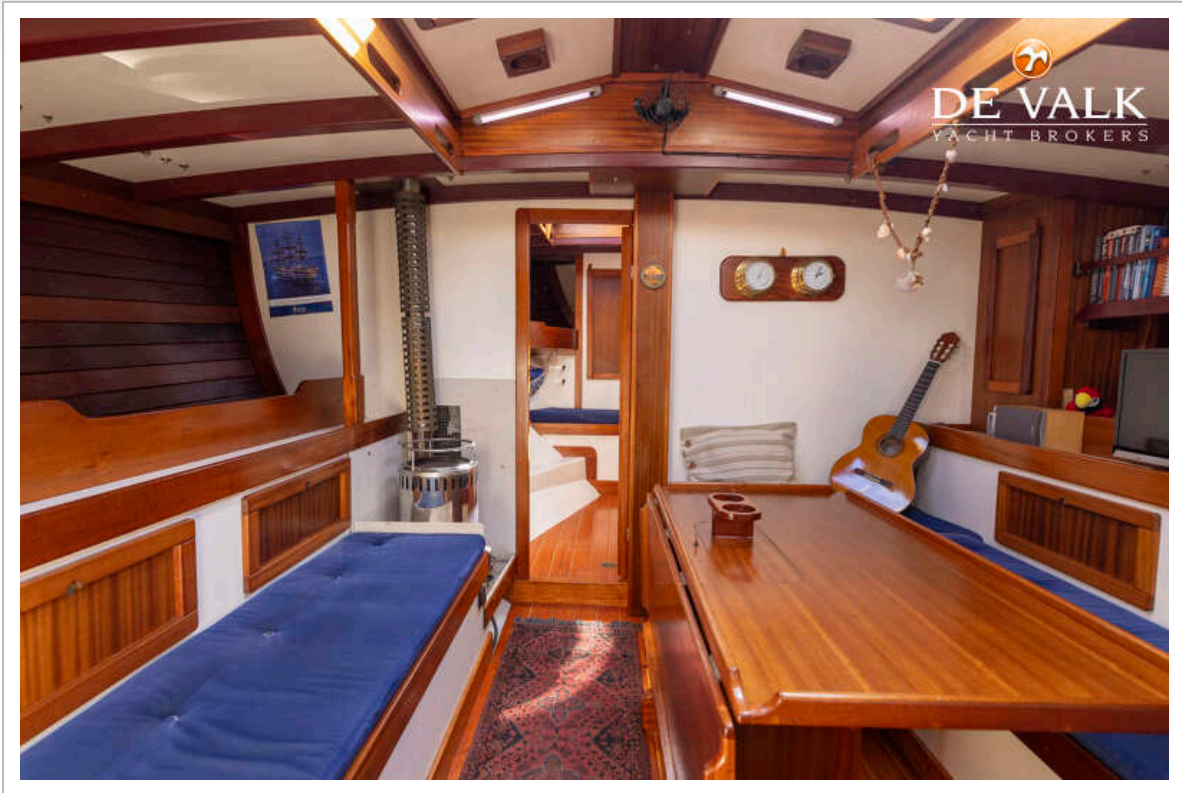
COLIN ARCHER 40



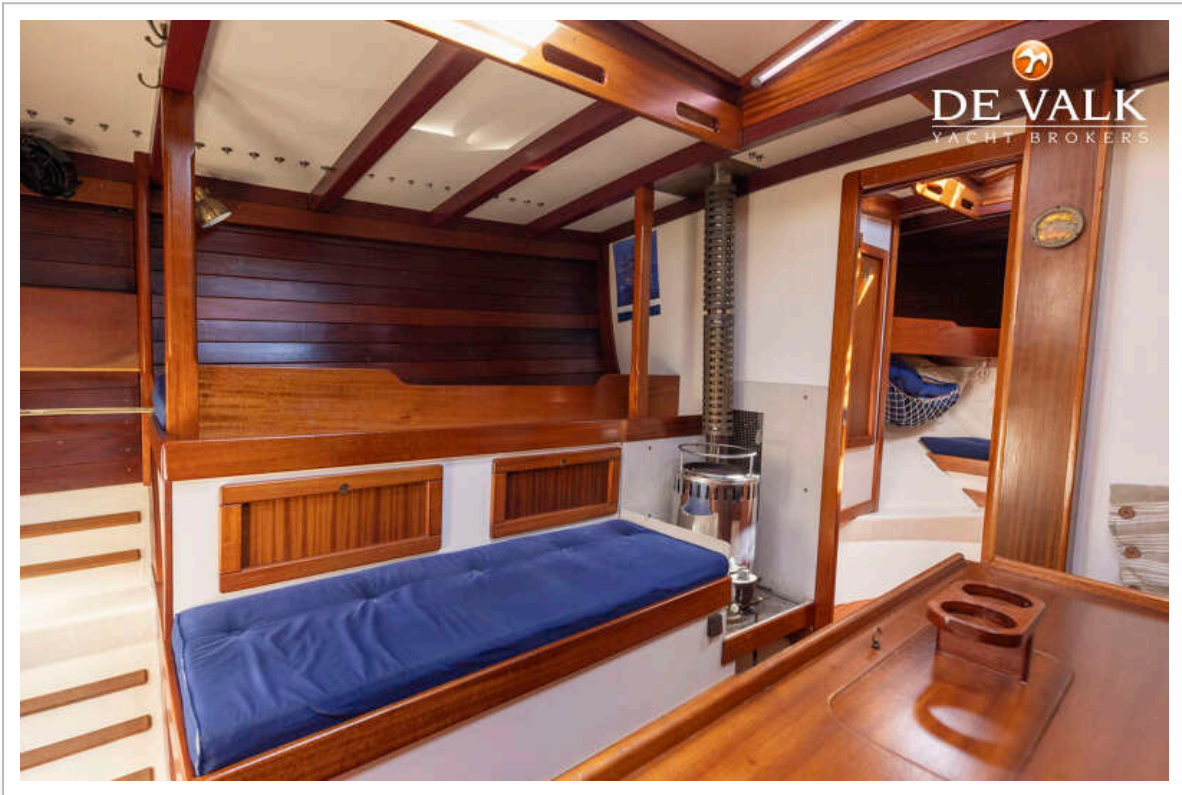
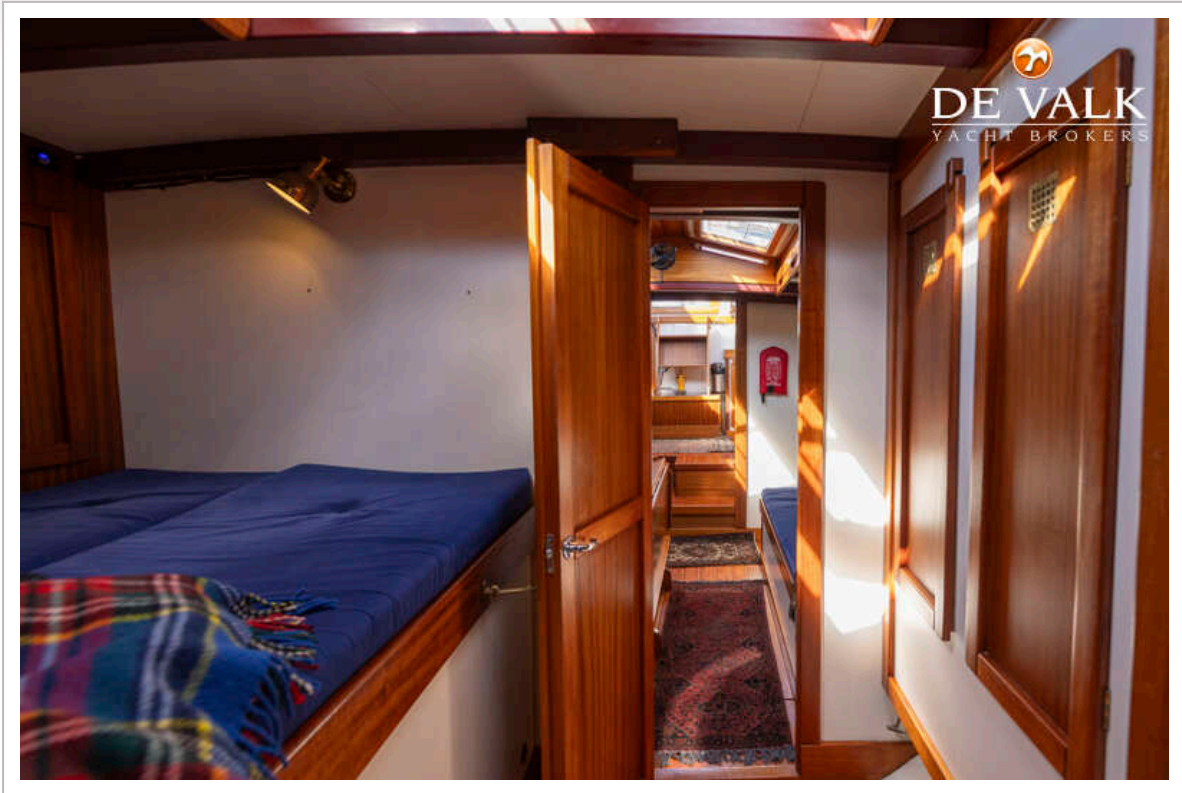
COLIN ARCHER 40



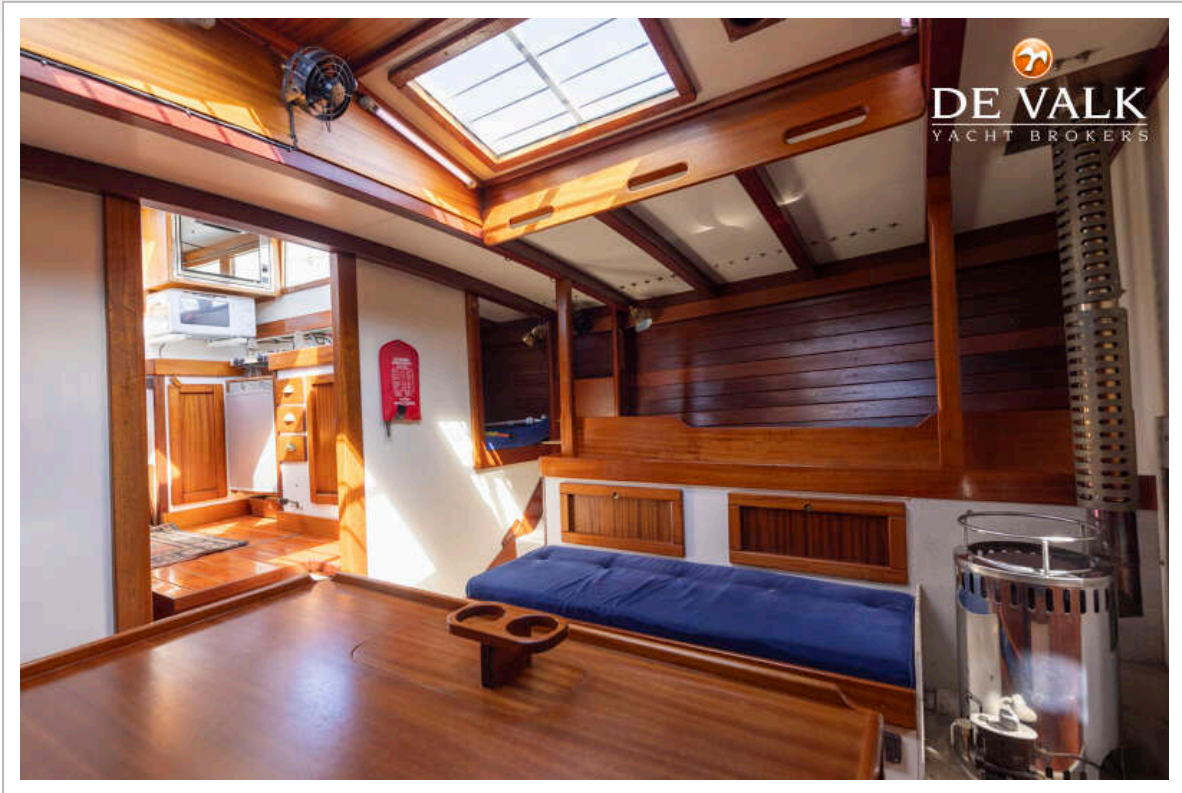
COLIN ARCHER 40



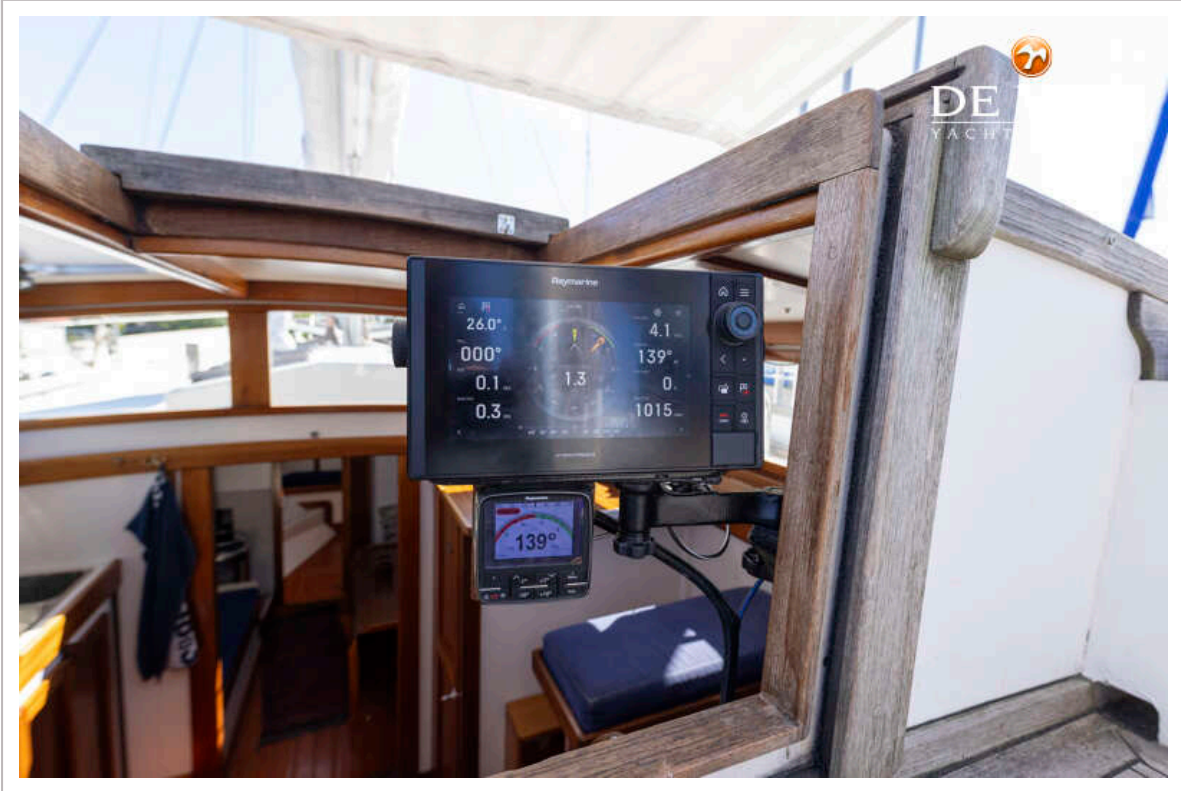
COLIN ARCHER 40



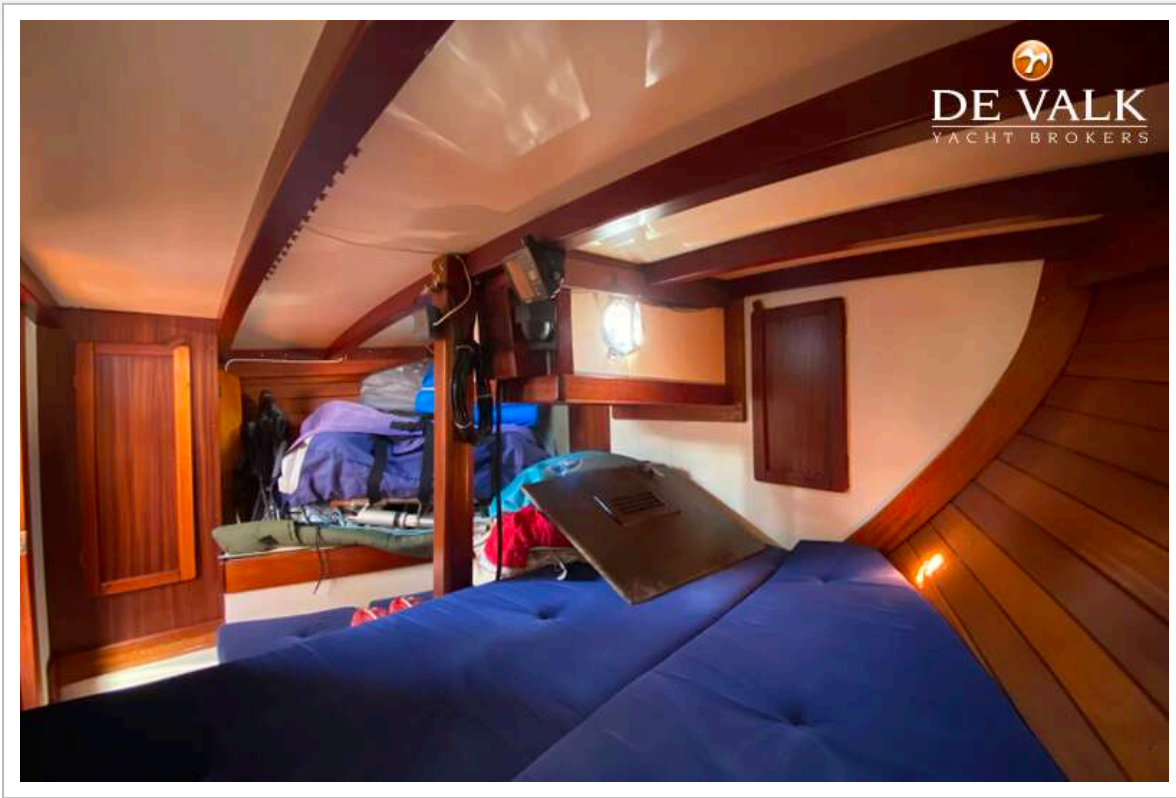
COLIN ARCHER 40



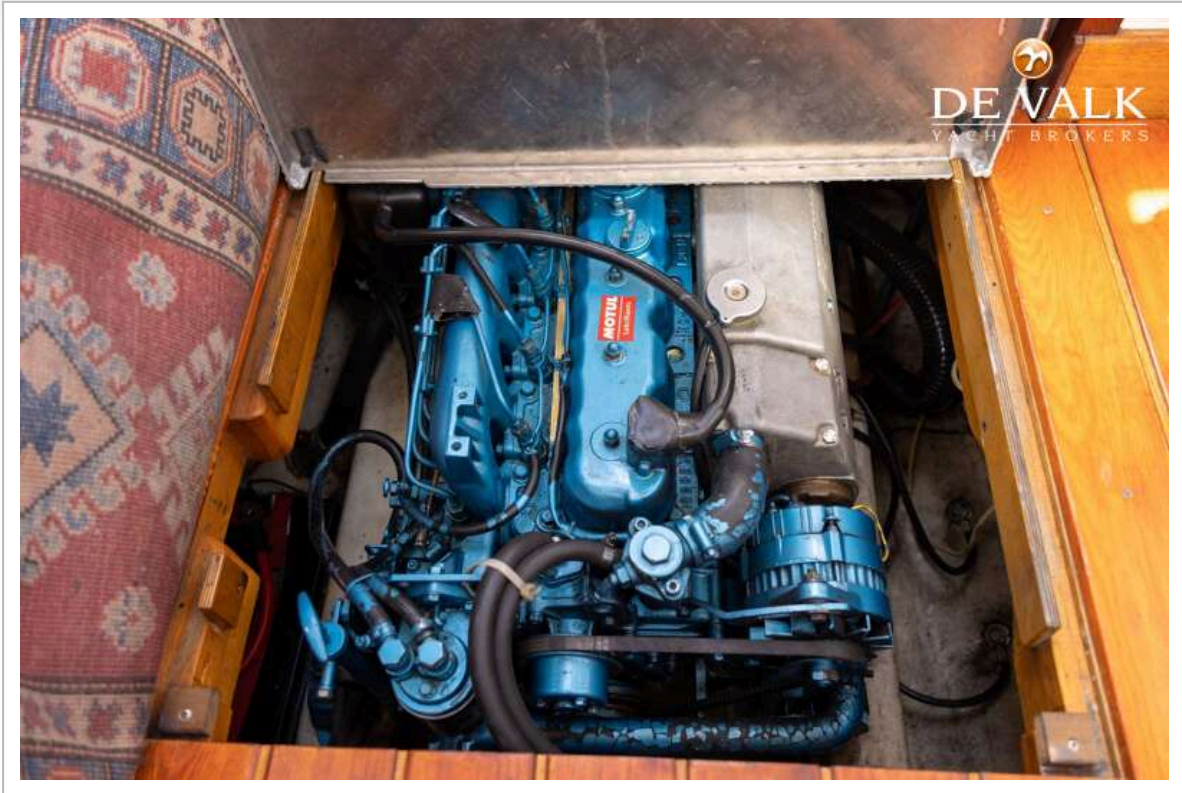
COLIN ARCHER 40



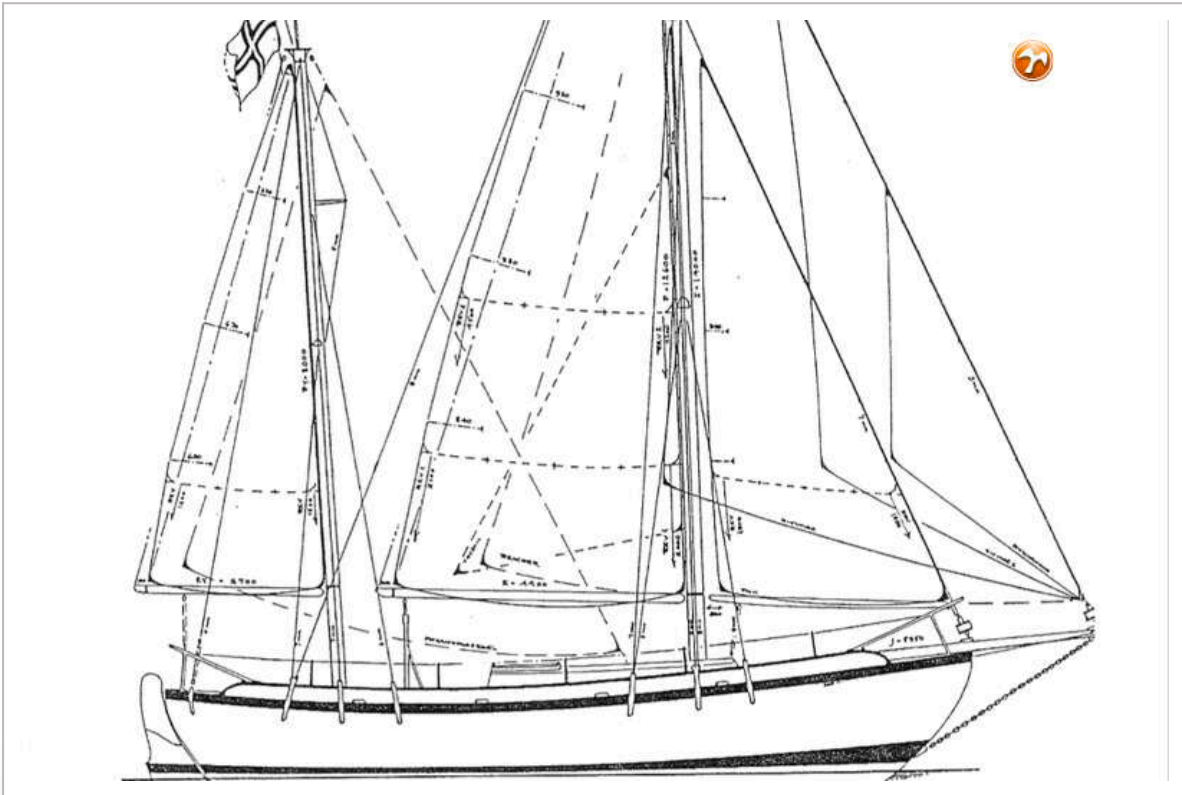
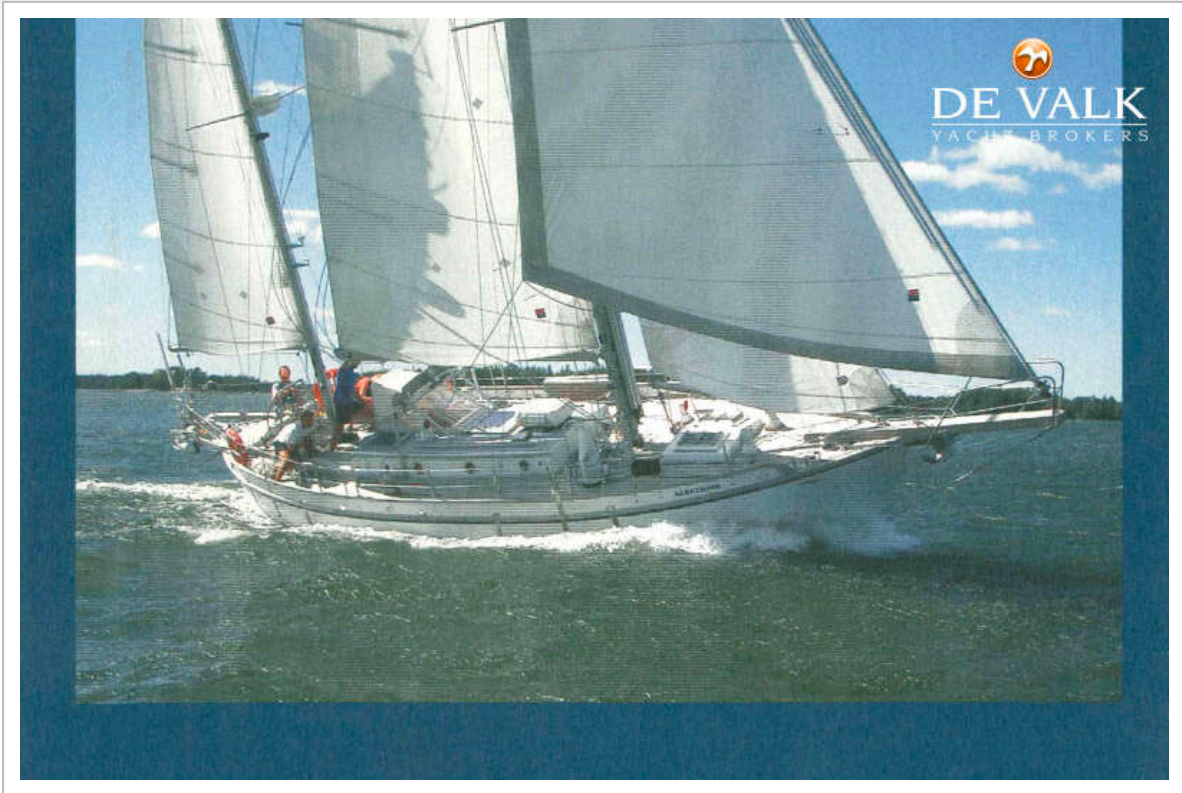
COLIN ARCHER 40

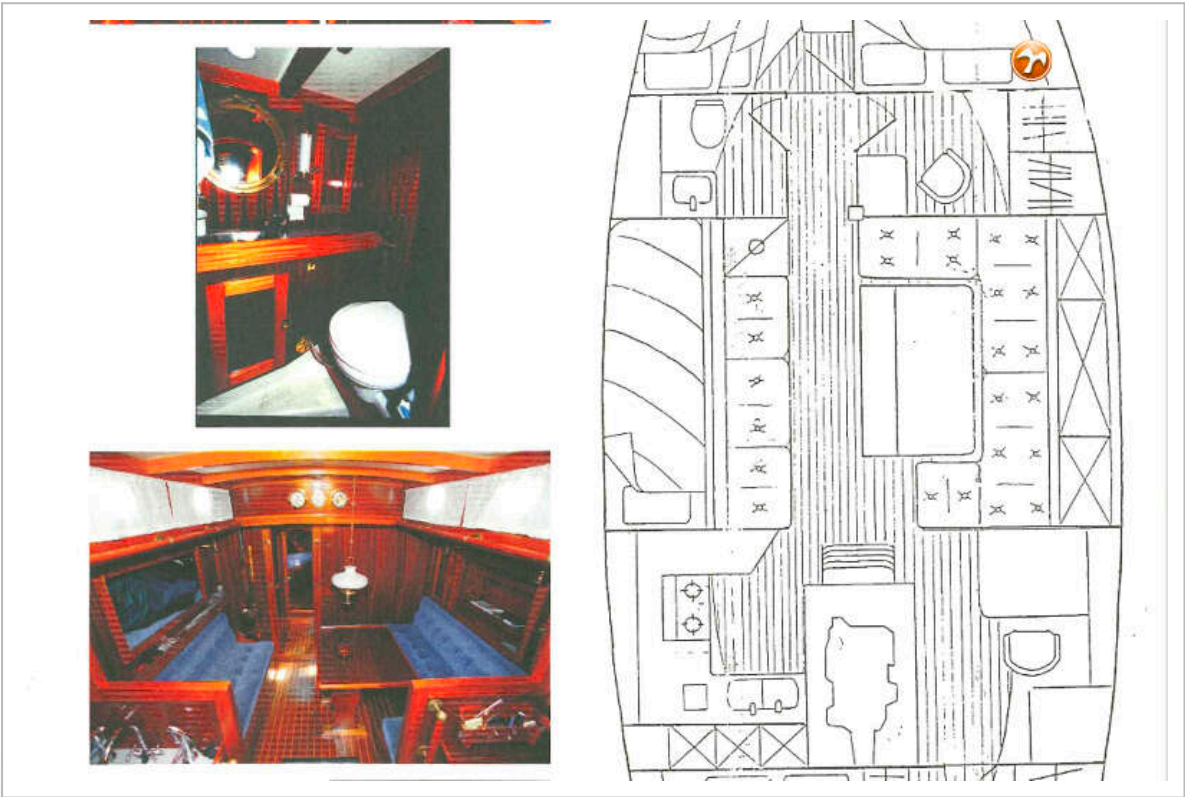
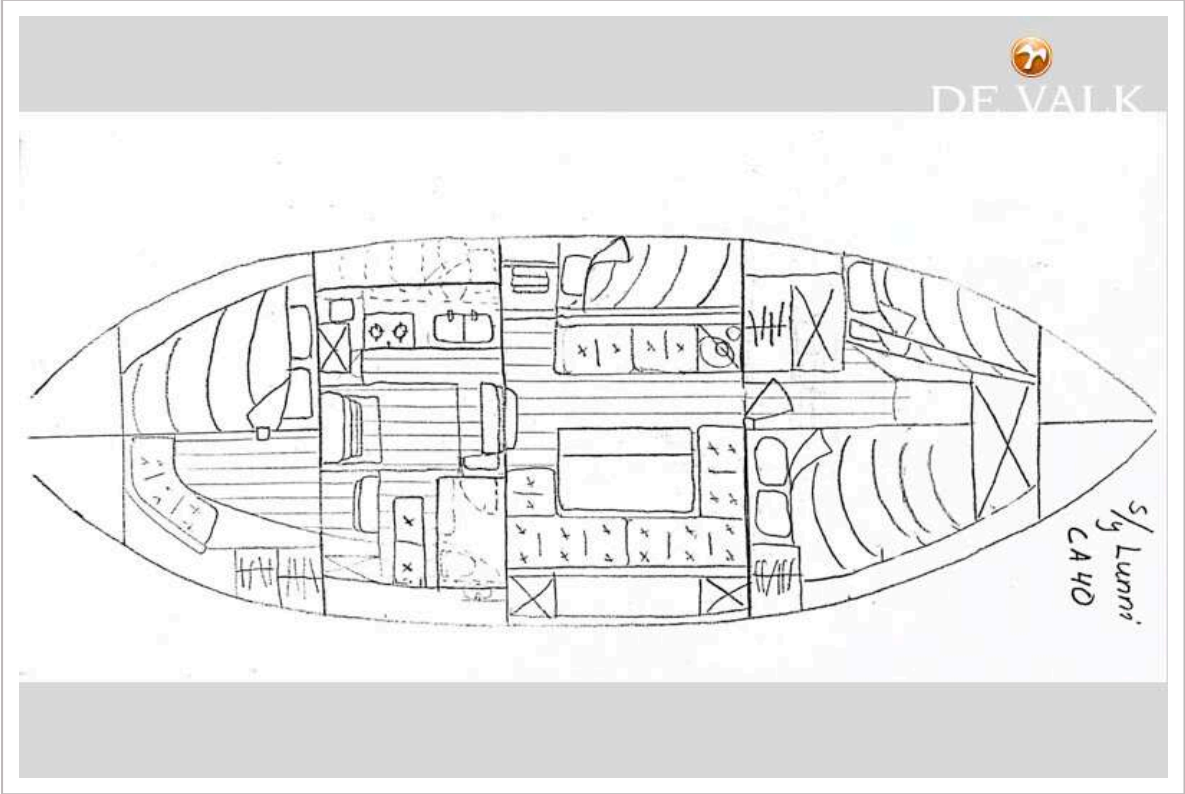


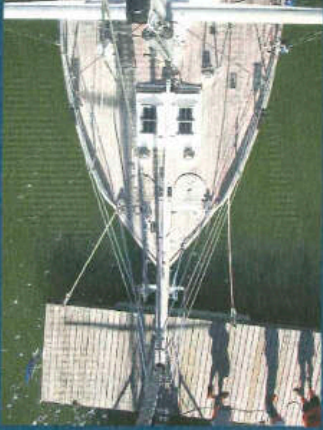
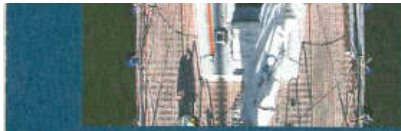
COLIN ARCHER 40



COLIN ARCHER 40







stages, including complete and ready to sail.

Even completely flush deck will allow full standing room below. It is also possible to get a dog house hidden away inside steering. We can adjust the deck layout according to your needs.



COMFORT AND SAFETY CAN MEAN THE SAME THING

Because of its extremely sea-worthy hull, its heavy displacement and the large amount of ballast the CA 40 has the stability and the easy motion of a large vessel. By not wearing out the crew, it makes life on board both easier and safer.

When looking for comfort, there is no substitute for space. There is hardly a 40 foot yacht that provides more room than the CA 40, be it on deck or below. Spending the holiday on board with the whole family, in safety and comfort, can be reality now that the powers of tradition

