



TRINTELLA 82AD HULL



DE VALK
YACHT BROKERS

TRINTELLA 82AD HULL

KOMMENTARE DES MAKLERS

High-quality aluminium hull of the Trintella 82 AD, a yacht that offers the perfect combination of elegance and performance. An impressive feat of craftsmanship. The construction has been carried out with extreme precision. This Trintella 82 AD hull provides an excellent basis for personalized finishing and interior design, giving future owners the opportunity to make their mark on this beautiful yacht.

Hans Visser

TECHNISCHE DATEN

Maße	25.00 x 6.20 x 2.70 (m)	Werft	Bloemsma
Baujahr	1992	Kabinen	
Material	Aluminium	Kojen	
Motor(en)	1 x MTU 10 V 183 diesel	PS/kW	291.00 (PS), 214.18 (kW)
Angebotspreis	€ 199.000 (MwSt. Bezahlt)	Liegeplatz	elsewhere / nicht im Verkaufsbüro

KONTAKT

Verkaufsbüro	De Valk Hindeloopen B.V.	Telefon	+31 514 52 40 00
Adresse	Oosterstrand 1 8713 JS Hindeloopen NL	E-Mail	hindeloopen@devalk.nl

HAFTUNGSAUSSCHLUSS

Diese Angaben erfolgen nach bestem Wissen, können jedoch nicht garantiert werden.



TRINTELLA 82AD HULL

ALLGEMEIN

Modell	TRINTELLA 82AD HULL
Typ	Segelyacht
Rumpflänge (m)	25,00
Wasserlinienlänge (m)	21,20
Breite (m)	6,20
Tiefgang (m)	2,70
Baujahr	1992
Werft	Bloemsma
Land	Niederlande
Entwerfer	E.G. van de Stadt
Gewicht (t)	63,3
Ballast (Ton)	Keelballast 25.000 kg
CE Norm	NA
Rumpfmateriale	Aluminium
Rumpffarbe	Primer
Haut-dicke Rumpf (mm)	Weight hull 9000 kg
Rumpfform	Rundspant
Art Kiel	Flugelkiel
Material Aufbauten	Aluminium
Deckmaterial	Aluminium superstructure and deck - weight 3400 kg
Deck Finish	Teak
Pflicht Bedeckung	gemalt
Decks Luke	Custom made Flush

UNTERKUNFT

Weitere Info	Hull was stored inside a shed for most of the time
---------------------	--

MASCHINEN

Motoranzahl	1
--------------------	---



TRINTELLA 82AD HULL

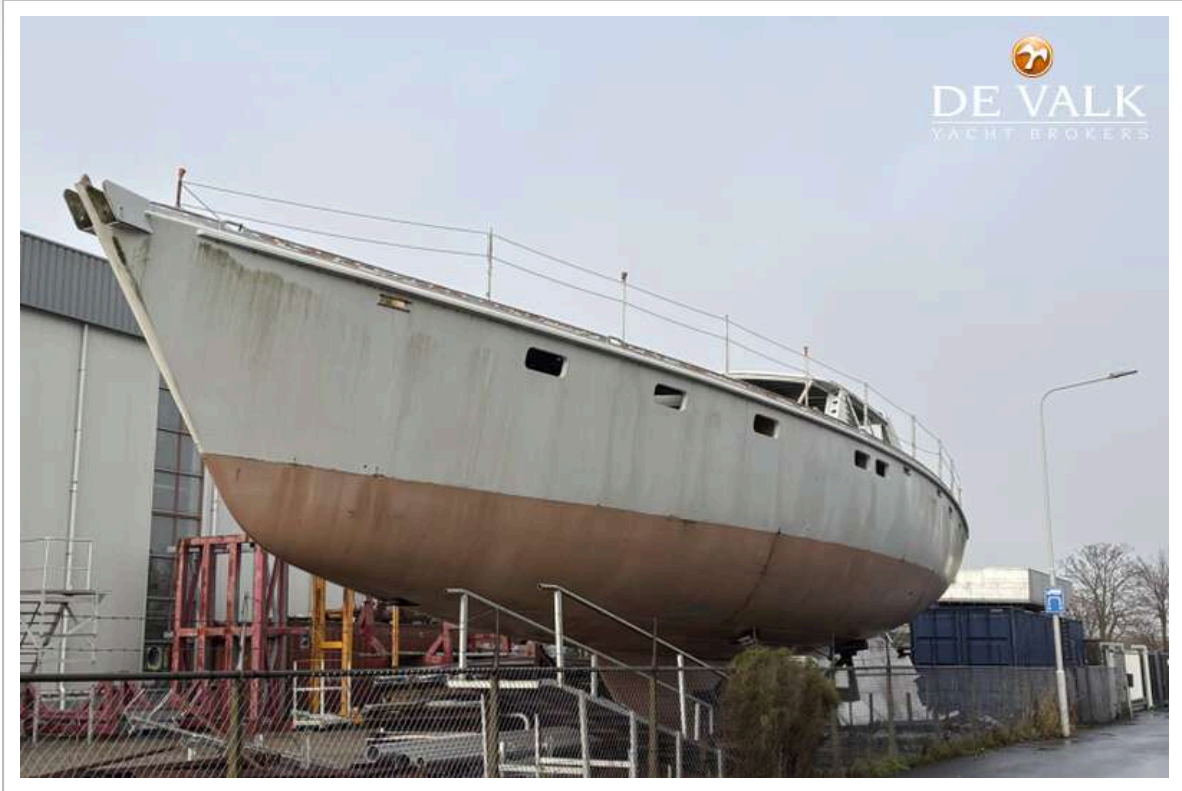
Marke	MTU
Typ	10 V 183
PS	291
kW	214.18
Kraftstoffart	Diesel
Höchstgeschwindigkeit (Kn)	12
Marschgeschwindigkeit (Kn)	9
Antrieb	Schraubenwelle



TRINTELLA 82AD HULL



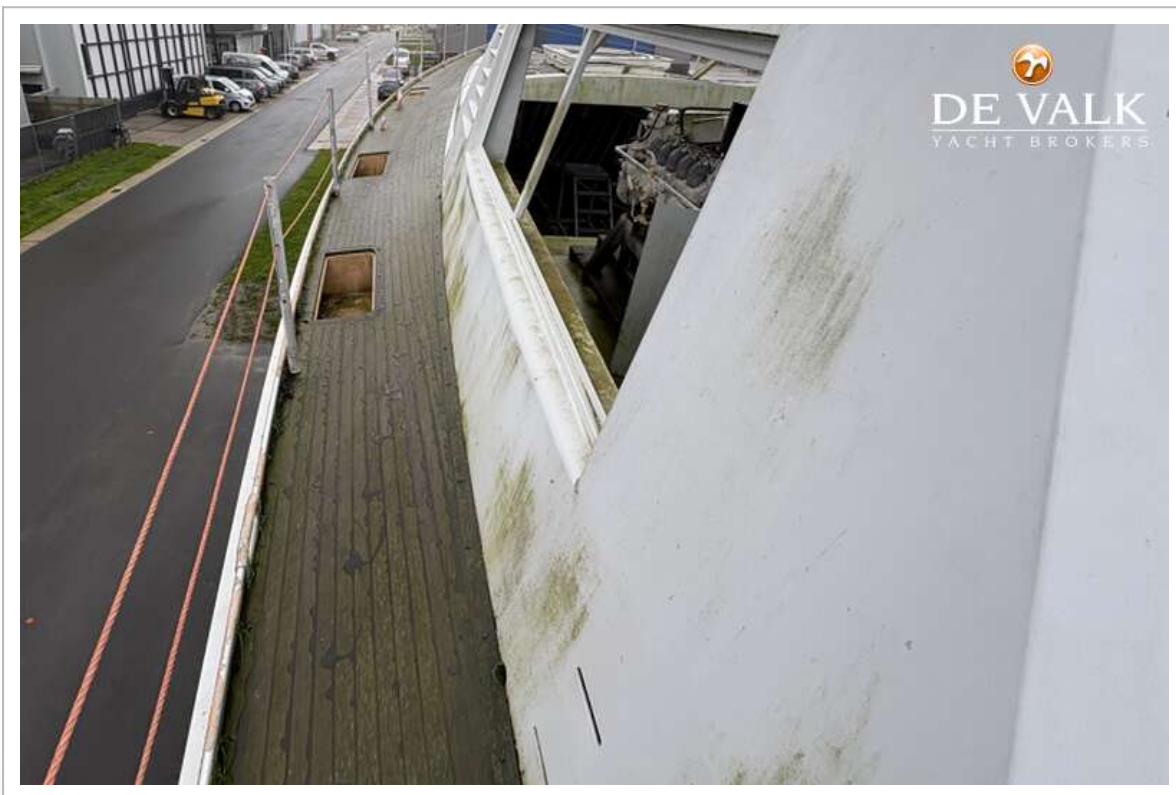
TRINTELLA 82AD HULL



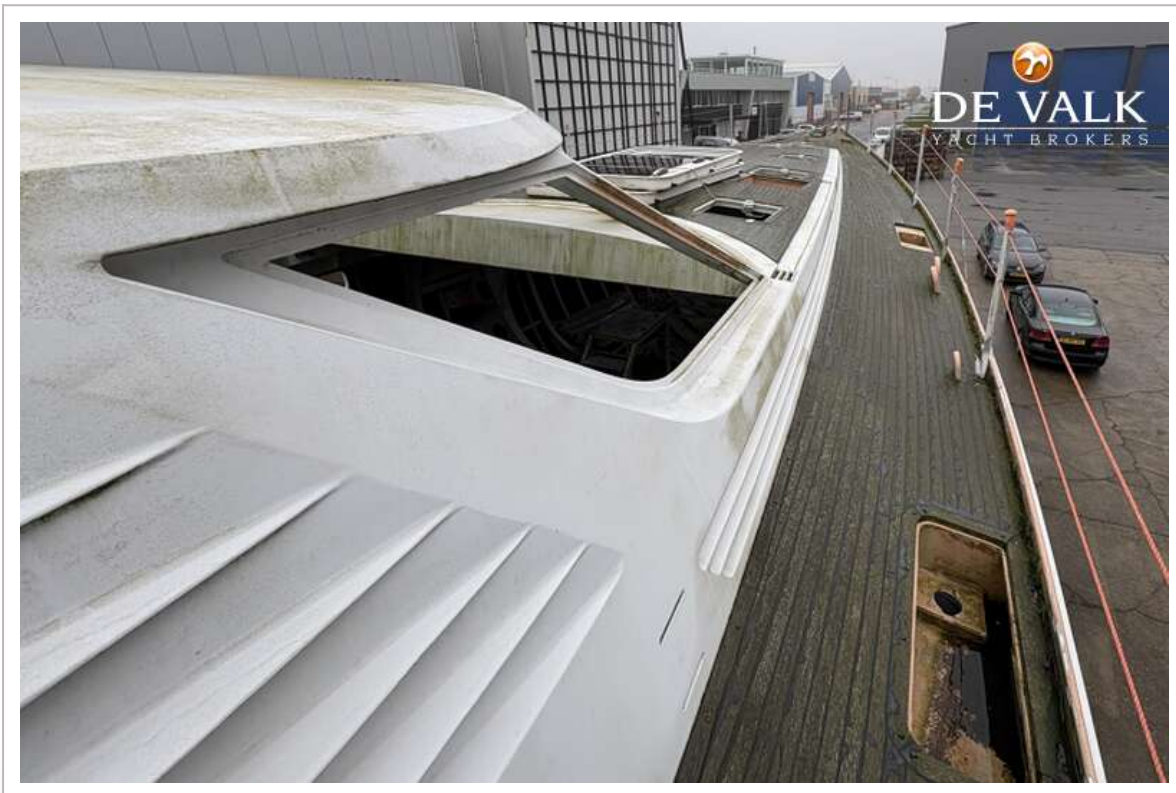
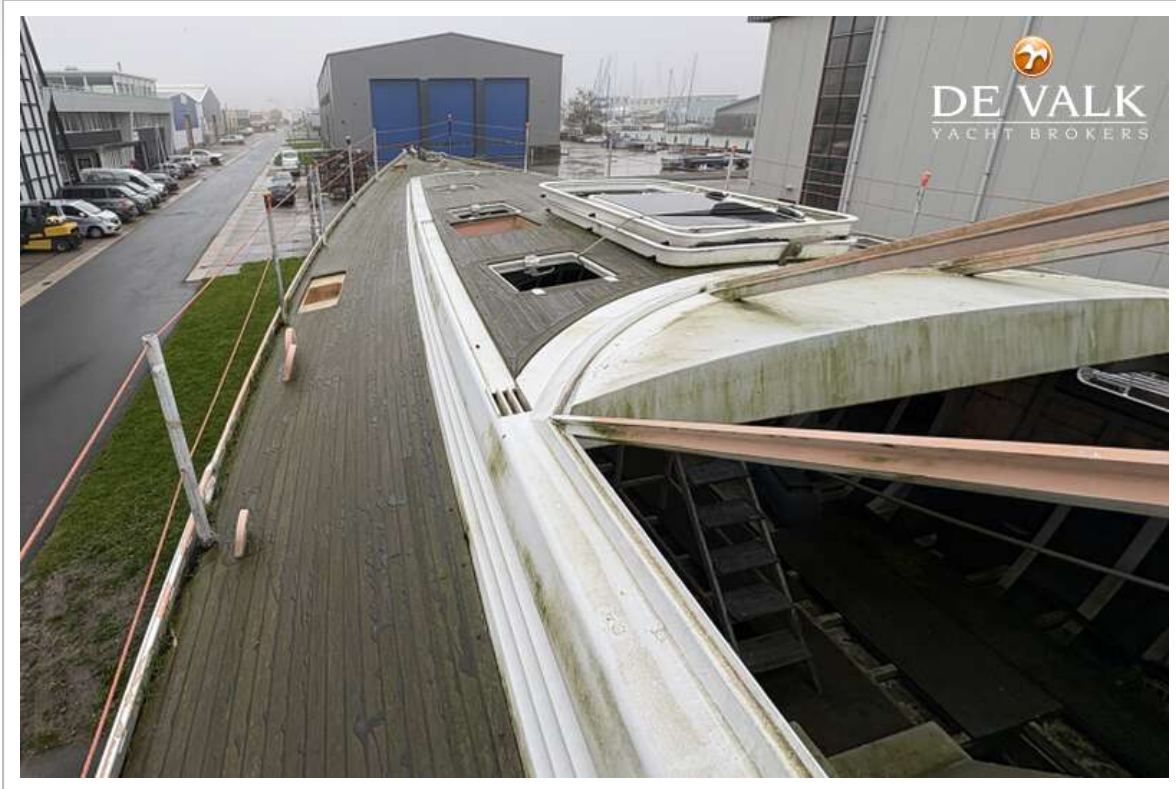
TRINTELLA 82AD HULL



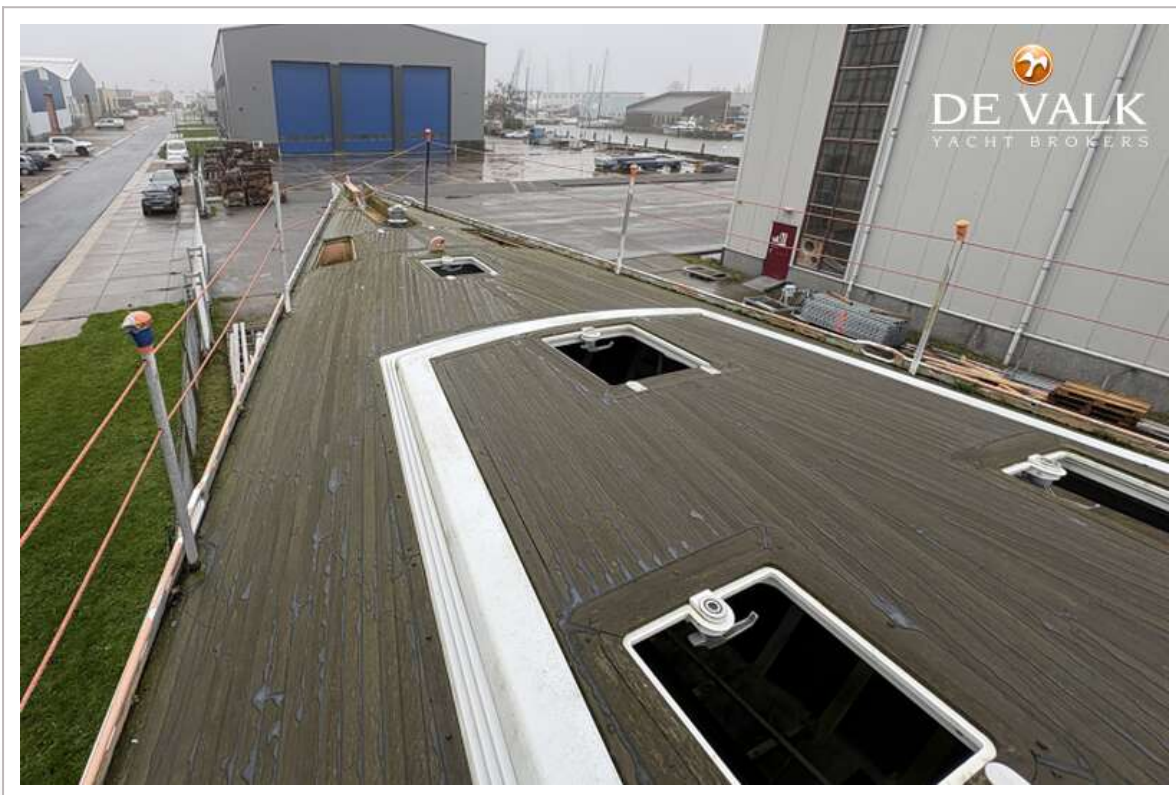
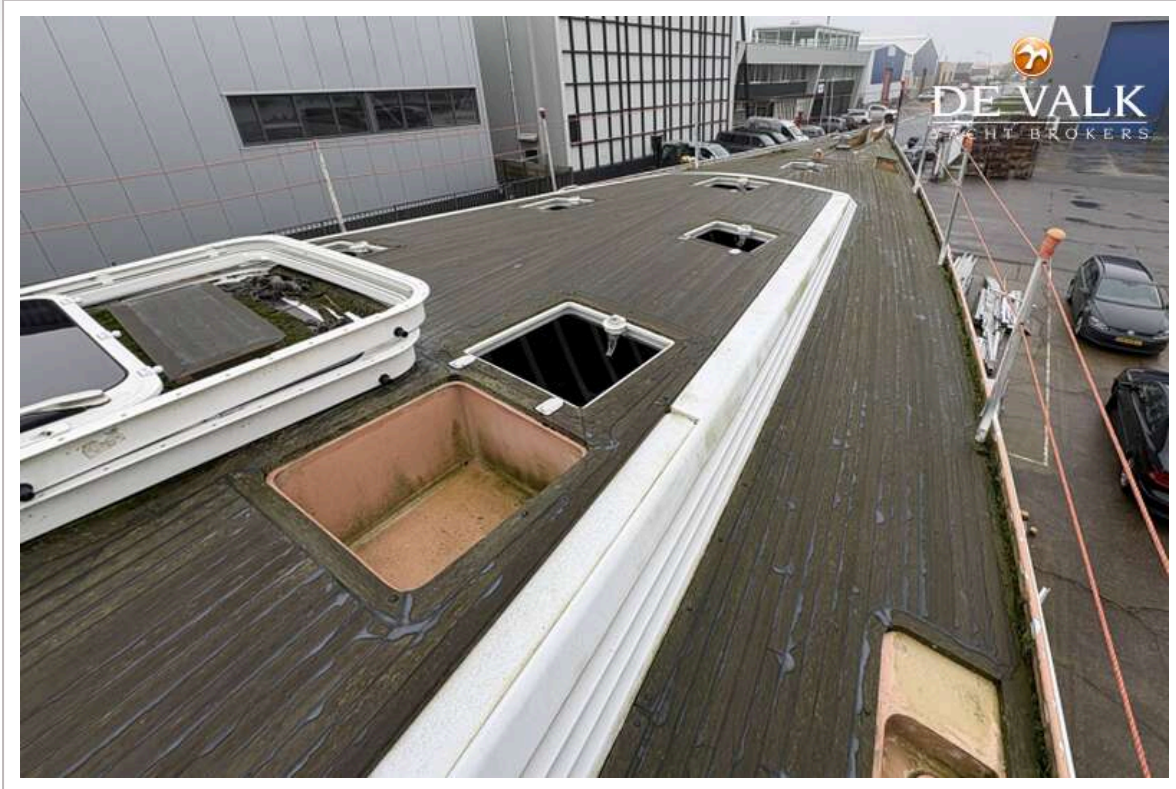
TRINTELLA 82AD HULL



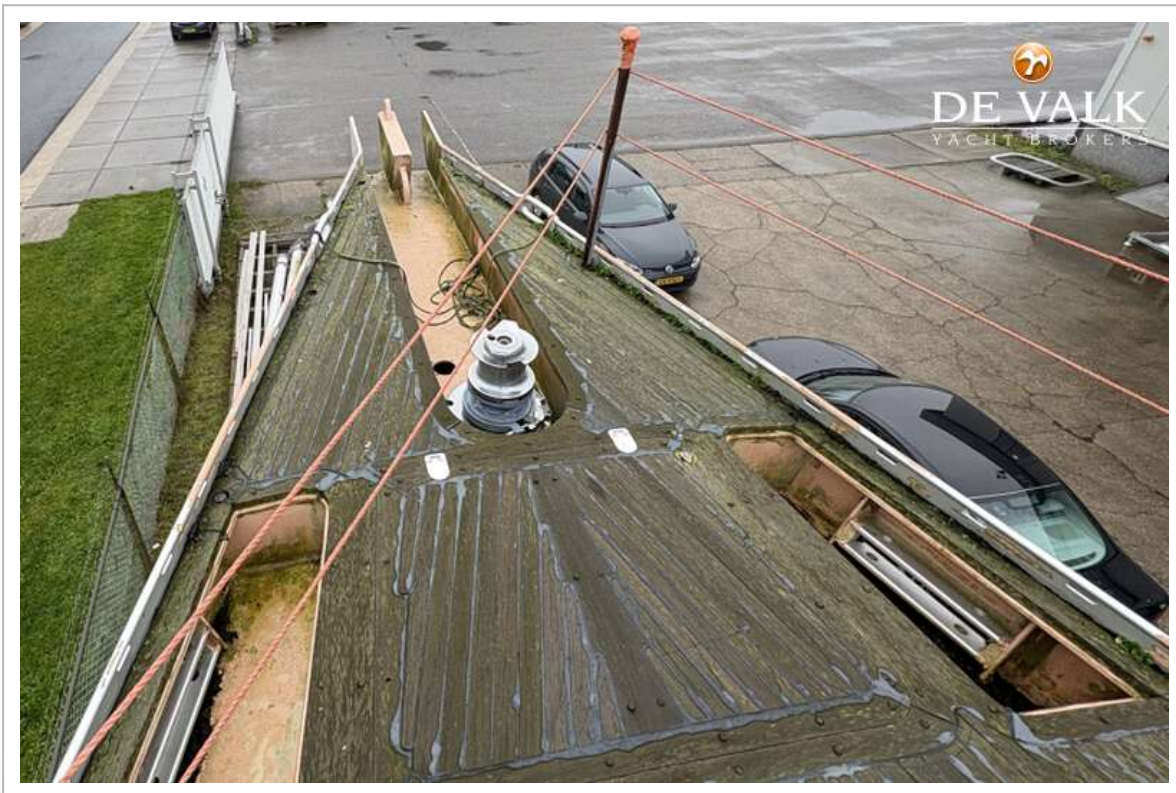
TRINTELLA 82AD HULL



TRINTELLA 82AD HULL



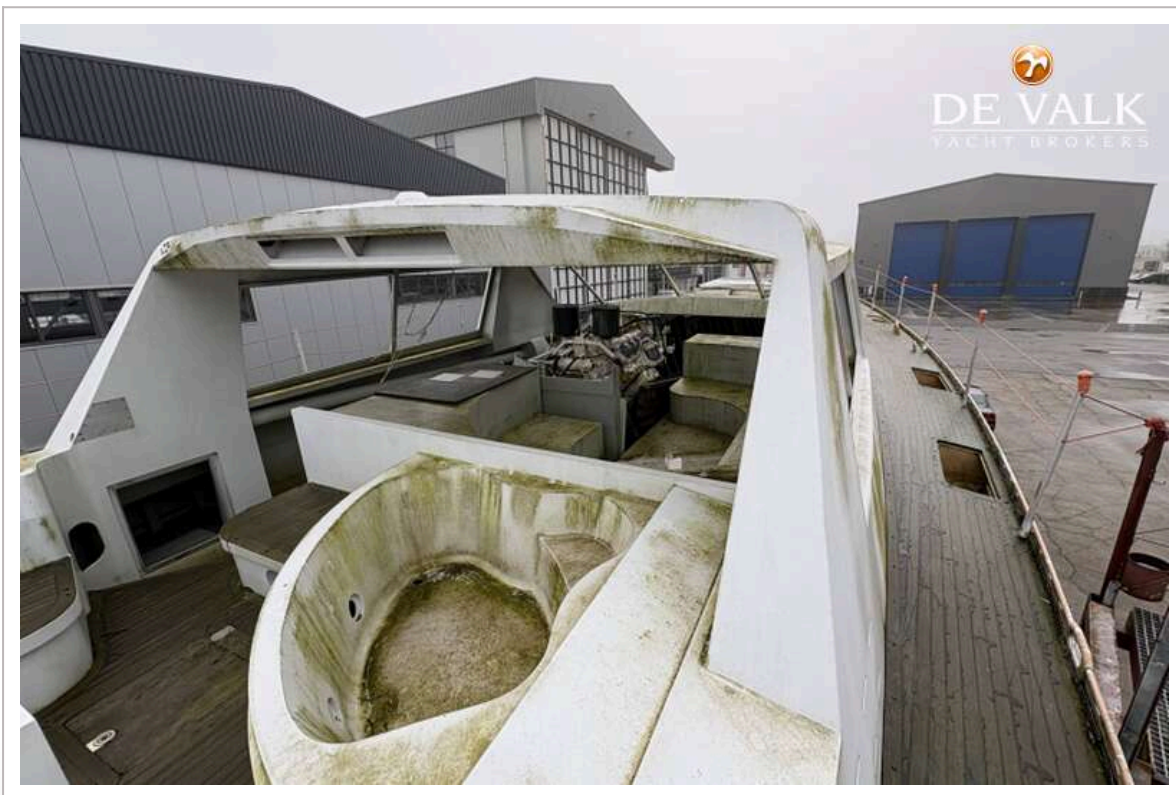
TRINTELLA 82AD HULL



TRINTELLA 82AD HULL



TRINTELLA 82AD HULL



TRINTELLA 82AD HULL



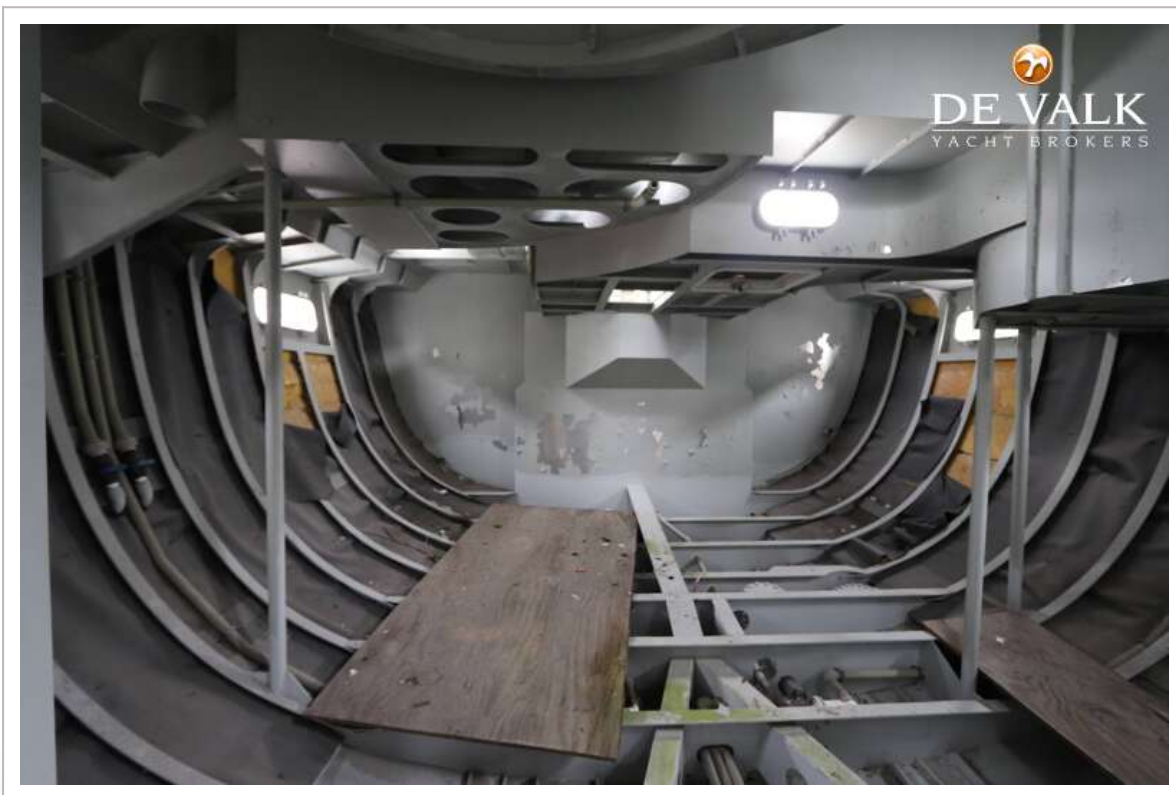
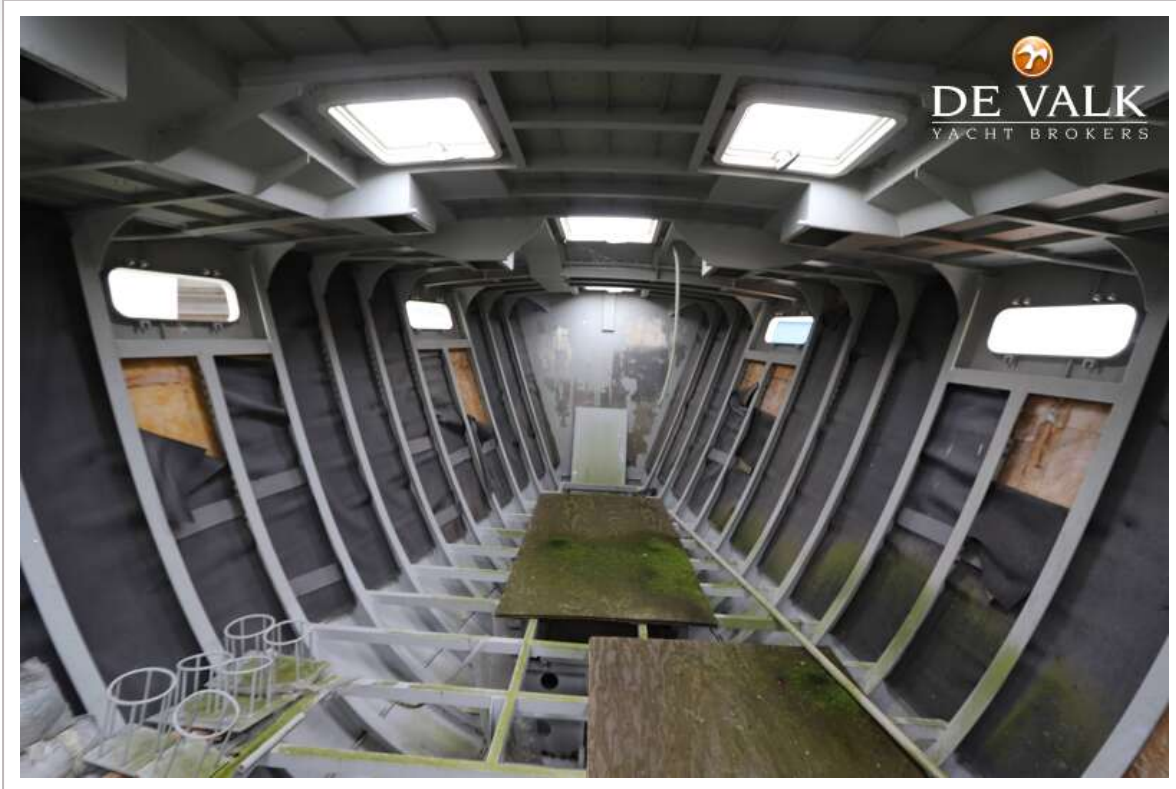
TRINTELLA 82AD HULL



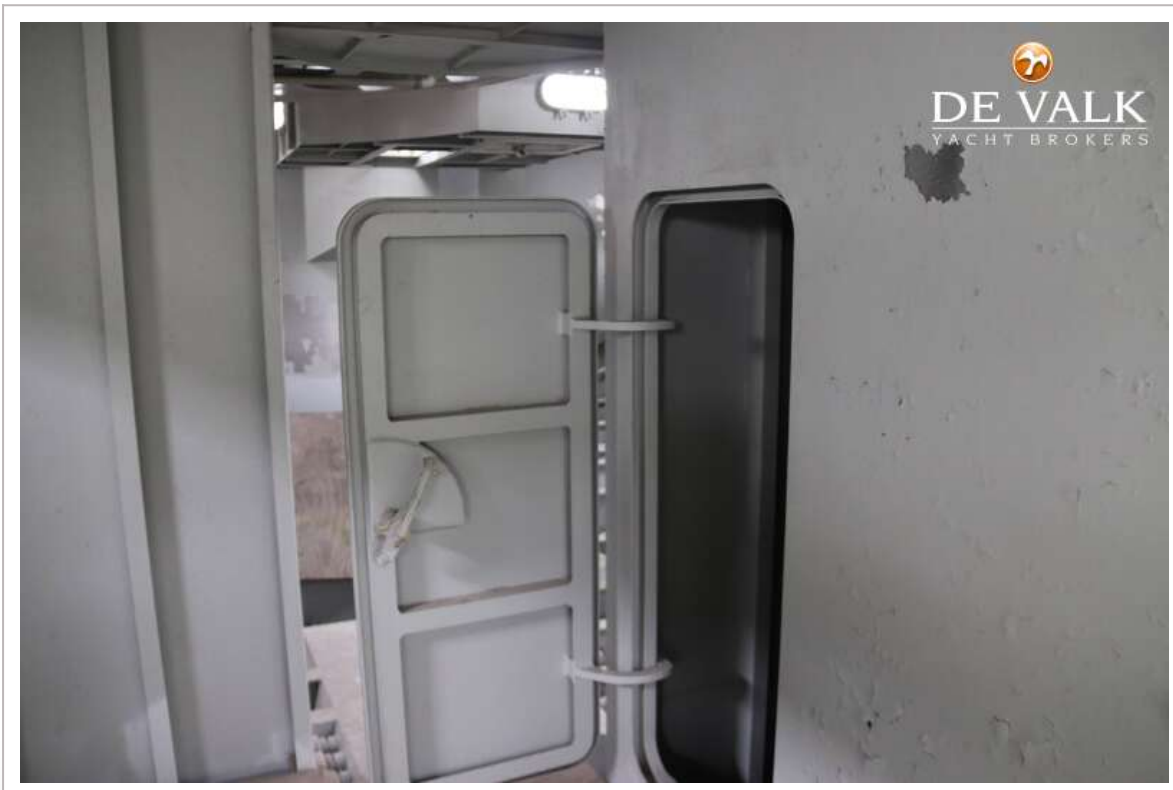
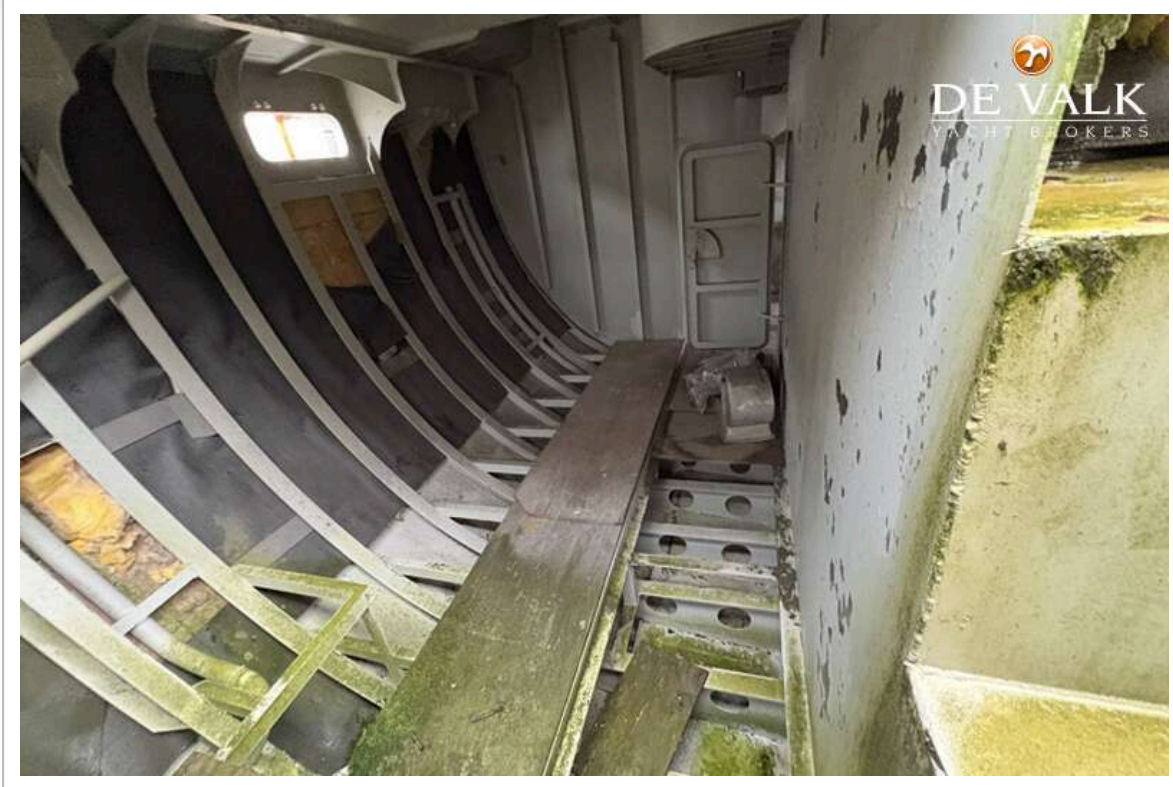
TRINTELLA 82AD HULL



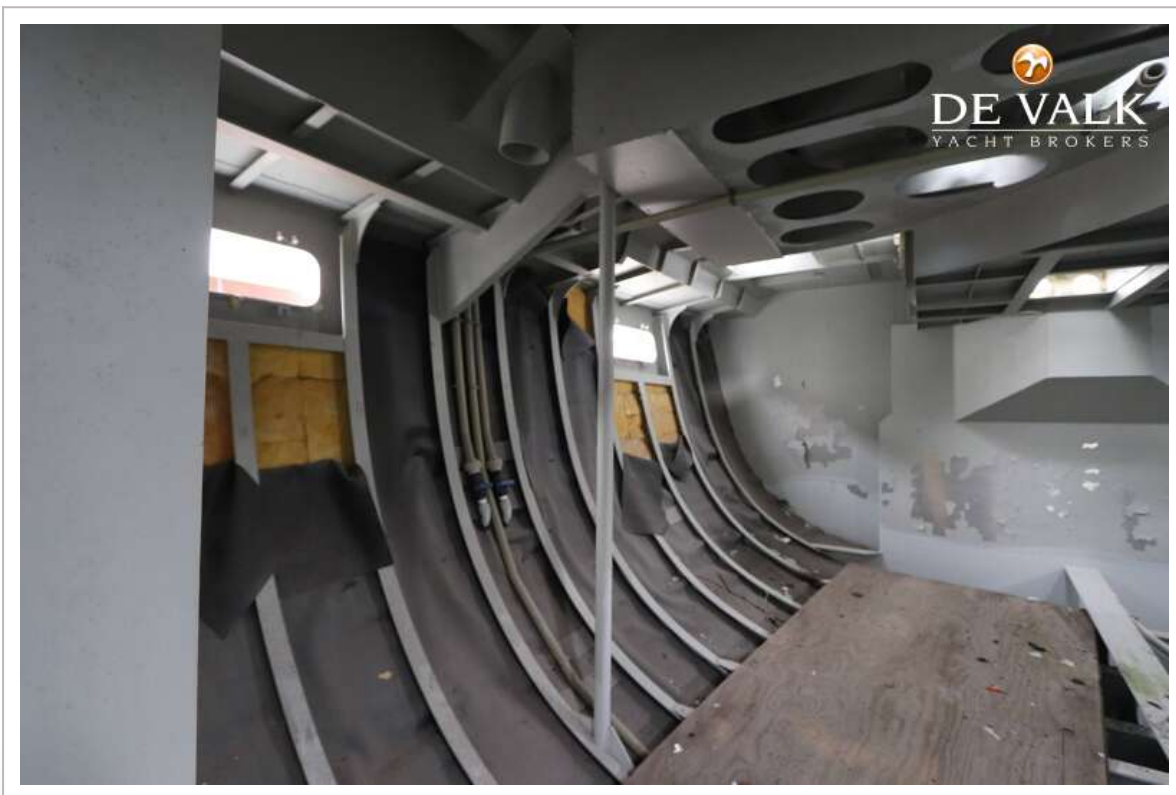
TRINTELLA 82AD HULL



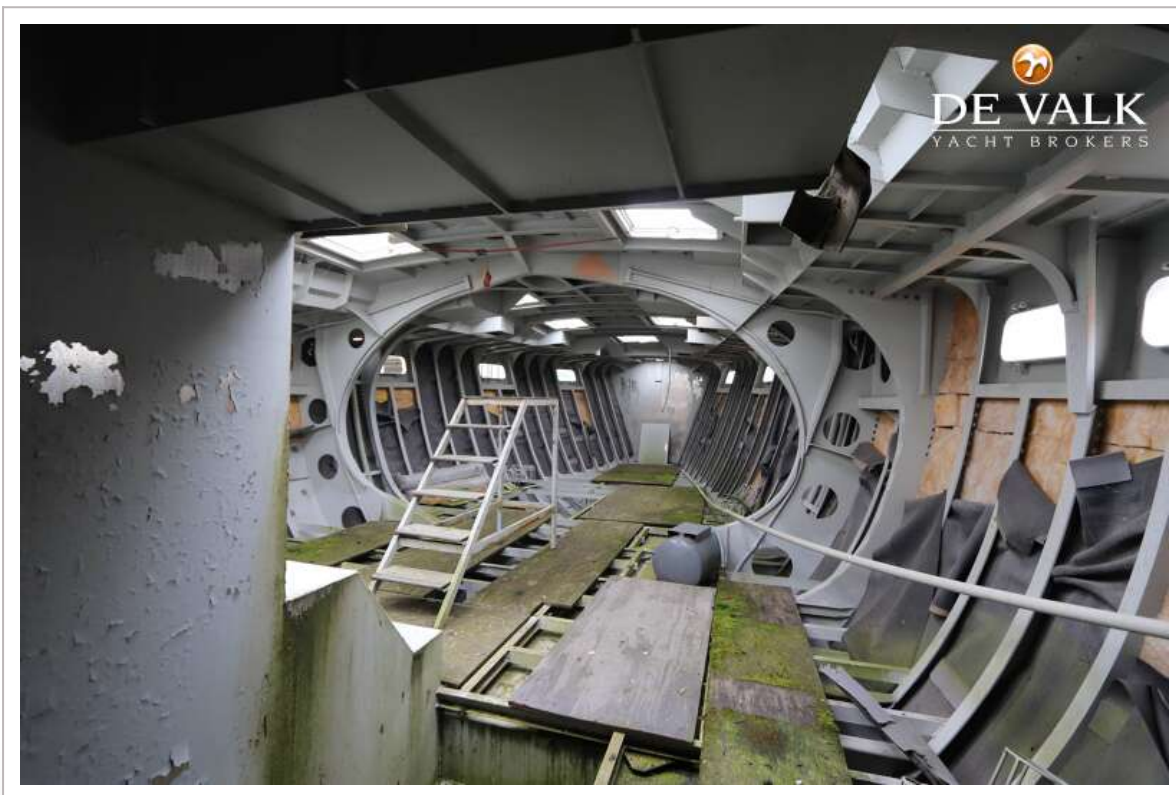
TRINTELLA 82AD HULL



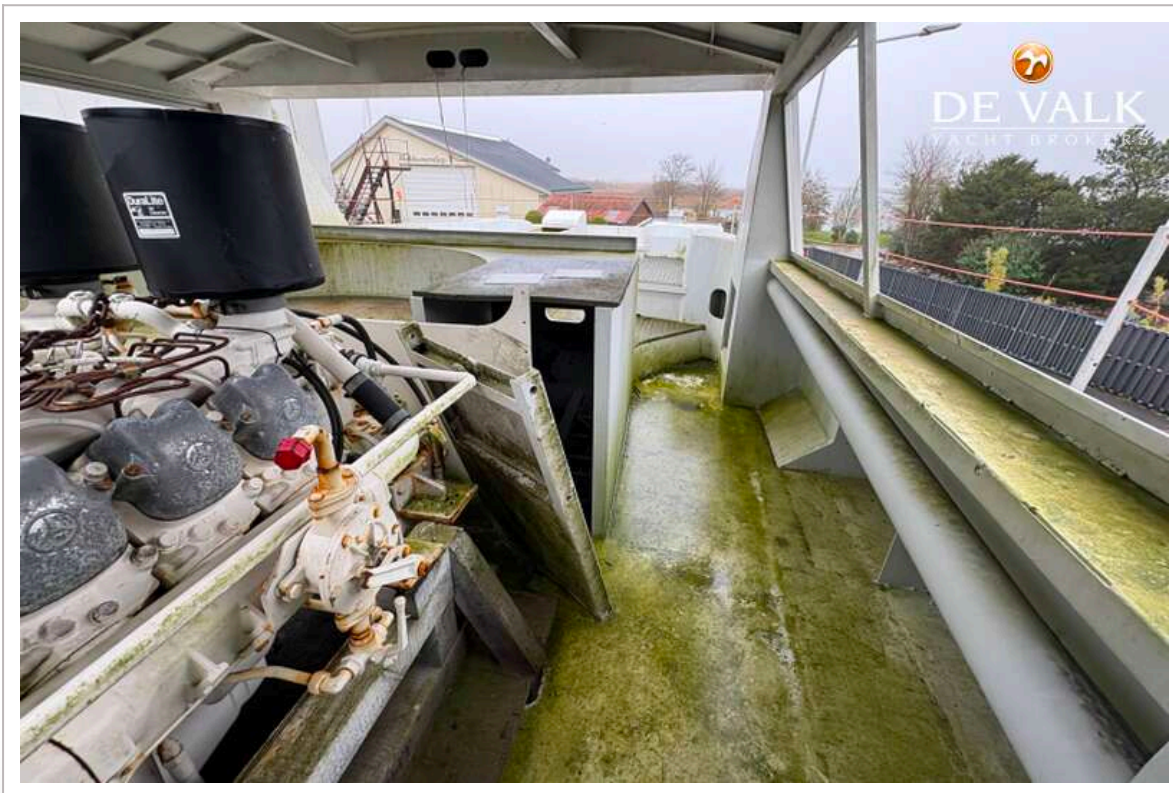
TRINTELLA 82AD HULL



TRINTELLA 82AD HULL



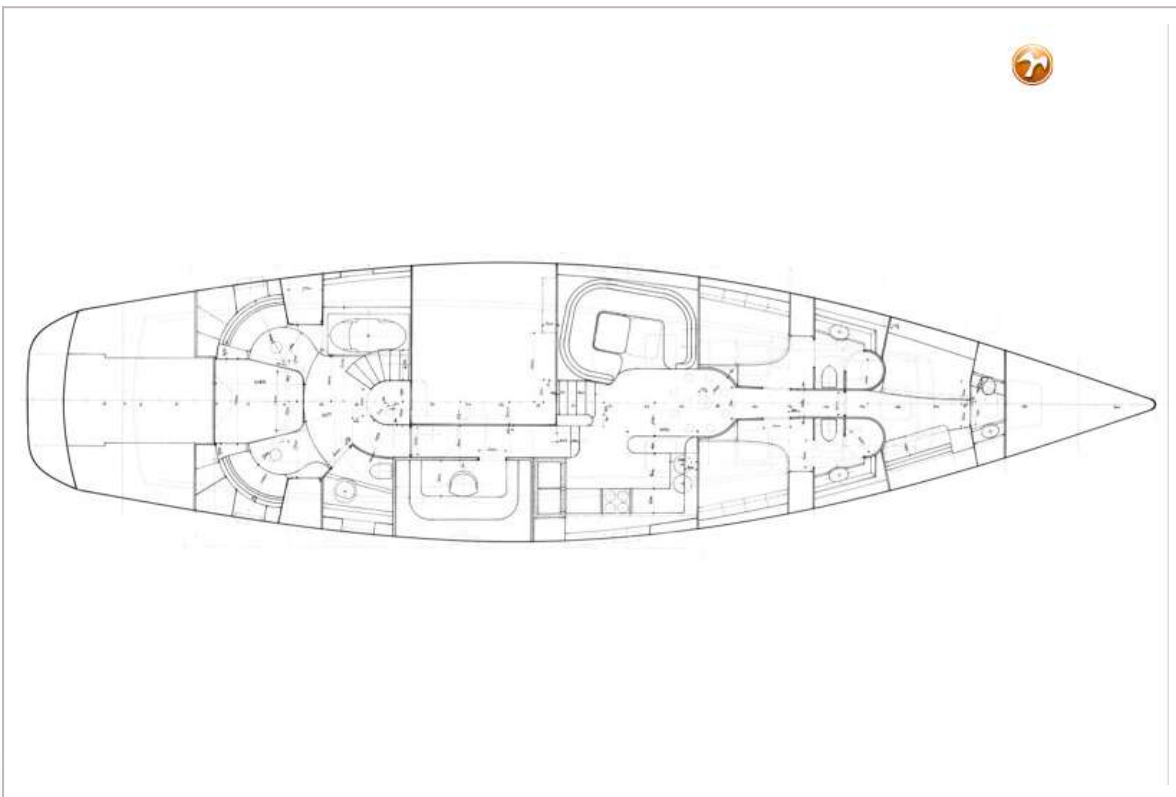
TRINTELLA 82AD HULL



TRINTELLA 82AD HULL



TRINTELLA 82AD HULL



TRINTELLA 82AD HULL

