



DE VALK
YACHT BROKERS



FEADSHIP KETCH



DE VALK
YACHT BROKERS

KOMMENTARE DES MAKLERS

Iduna is the largest pre-war yacht built at De Vries Shipyard in Aalsmeer (NL) and is a proud member of the Feadship heritage fleet. Extensive refit was carried out from 1999 to 2002 at Cantieri Darsena in Viareggio which is fully documented. Since then she has been meticulously maintained and has undergone the necessary small refits throughout time. She's unique and one of a kind waiting for a new owner who see's how special she is.

Leonard Bonnema

TECHNISCHE DATEN

Maße	33.50 x 5.70 x 2.50 (m)	Werft	De Vries Aalsmeer
Baujahr	1939	Kabinen	3
Material	Stahl	Kojen	6
Motor(en)	1 x Caterpillar 3406 TA diesel	PS/kW	340.00 (PS), 250.24 (kW)
Angebotspreis	€ 2.750.000 (MwSt. Mehrwertsteuerfrei)	Liegeplatz	contact sales office

KONTAKT

Verkaufsbüro	Falcon Rydell	Telefon	+31 (0)35 582 90 29
Adresse	't Breukeleveense Meentje 6 1231LM Loosdrecht / Wijdemeren NL	E-Mail	info@falconrydell.com

HAFTUNGS AUSSCHLUSS

Diese Angaben erfolgen nach bestem Wissen, können jedoch nicht garantiert werden.



FEADSHIP KETCH

ALLGEMEIN

Modell	FEADSHIP KETCH
Typ	Motorsegler
Rumpflänge (m)	33,50
Wasserlinienlänge (m)	25,00
Breite (m)	5,70
Tiefgang (m)	2,50
Baujahr	1939
Werft	De Vries Aalsmeer
Land	Niederlande
Entwerfer	H.W. de Voogt
Gewicht (t)	81
Brutto tonnage	133
Rumpfmateral	Stahl
Rumpffarbe	White
Rumpfform	Round bilged
Material Aufbauten	Wood
Deck Finish	Teak laid on two layers of plywood
Treibstofftank (Liter)	5.000
Trinkwassertank (Liter)	6.000
Fäkaelien Tank (Liter)	Haman black and grey watersystems, 2.500 litres
Radsteuerung	Hydraulic
Aussen Steuerung	With great overview
Weitere Info Rumpf	Complete refit 1999-2002

UNTERKUNFT

Kabinen	3
Kojen	6
Innen	Kirsche
Salon	Two spacious Saloons (1 lower deck; 1 deckhouse)
Eignerkabine	With queen sized bed and en suite bathroom



FEADSHIP KETCH

Badezimmer	en suite
Gästekabine 1	Double guest cabin with en suite bathroom
Badezimmer	en suite
Gästekabine 2	Twin guest cabin with bathroom en suite
Badezimmer	en suite
Mannschaftskabine(n)	2 large cabins for 4 crew with spacious bathroom, galley/mess

MASCHINEN

Motoranzahl	1
Marke	Caterpillar
Typ	3406 TA
PS	340
kW	250.24
Kraftstoffart	Diesel
Überholung im Jahr	2001
Höchstgeschwindigkeit (Kn)	12
Marschgeschwindigkeit (Kn)	9
Gewende getriebe	Twindisc
Bugschraube	Powerpack for winches, capstan and 50hp bowthruster
Elektrische Bilgenpumpe	ja
Elektrische Anlage	Re-wired 2001 with new switch and distribution boards
Generator	2x 35kVA, 3-phase 380V, 50hz, Perkins

NAVIGATION

Multi Control Display	B&G depth, speed, wind, wind angle; 3 positions
UKW	Sailor RT4822, SSB/DSC-Sailor HC 4500
Portabel UKW	4x Icom; 2x Icom 1500
Autopilot	Litton MarineC PLATH
Radar	Furuno 1943 #2 displays with ARPA cards
GPS	JRC DGPS 200
Navtex	NCR 330



FEADSHIP KETCH

Epirb

Satelite EPIRB-Sailor 406 Mhz

AUSRÜSTUNG

Sturm Fenstern

ja

Ankerwinde

hydraulik

Gangspill

Hydraulic

Beiboot

aufblasbar Festboden Avon 4 m.

Ausserborder

50 hp

TV

ja

TV-Empfänger

SEATEL TV 1898E

Feuerloscher

ja

Weitere Info

Safety equipment

Weitere Info

Fire fighting systems

RIGG

Rig

Ketsch Rigging by Harry Spencer of Cowes

Material Mast

Holz 2x

Weitere Info

Complete set of sails by Ratsey & Lapthorne

Weitere Info

Deck fittings in bronze, Meissner hydraulic bronze winches



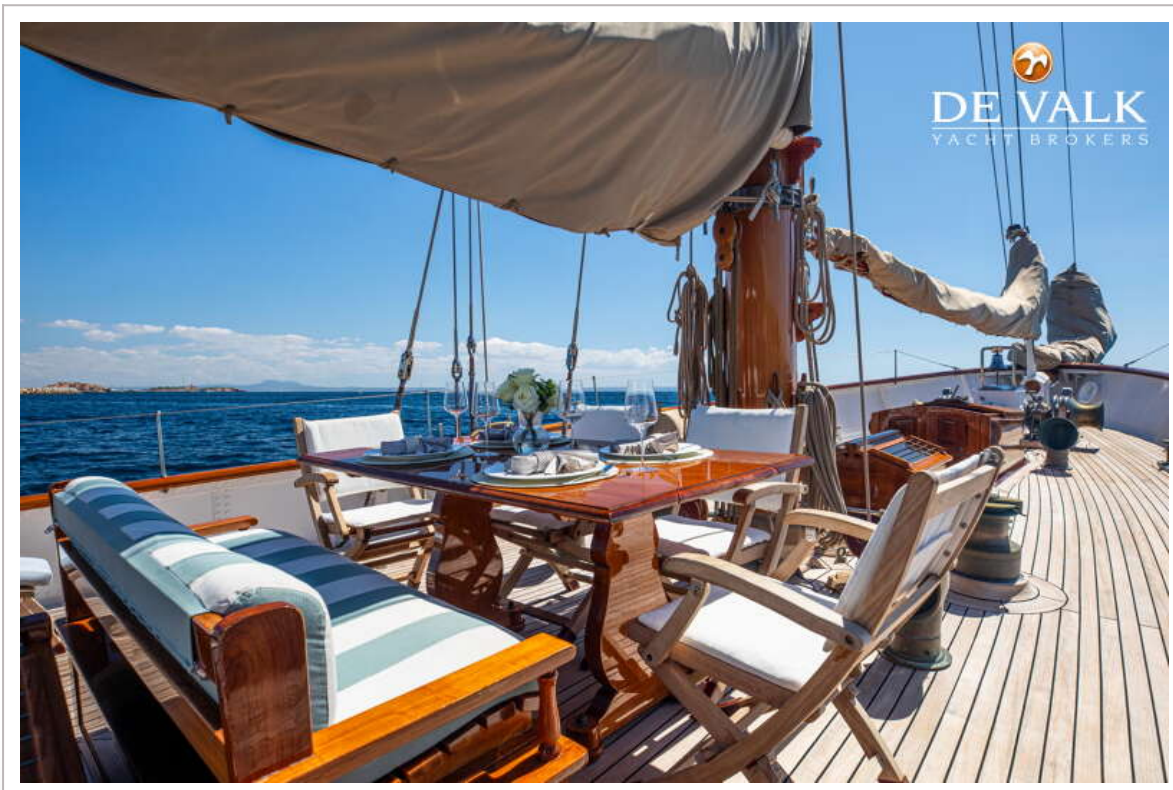
FEADSHIP KETCH



FEADSHIP KETCH



FEADSHIP KETCH



FEADSHIP KETCH



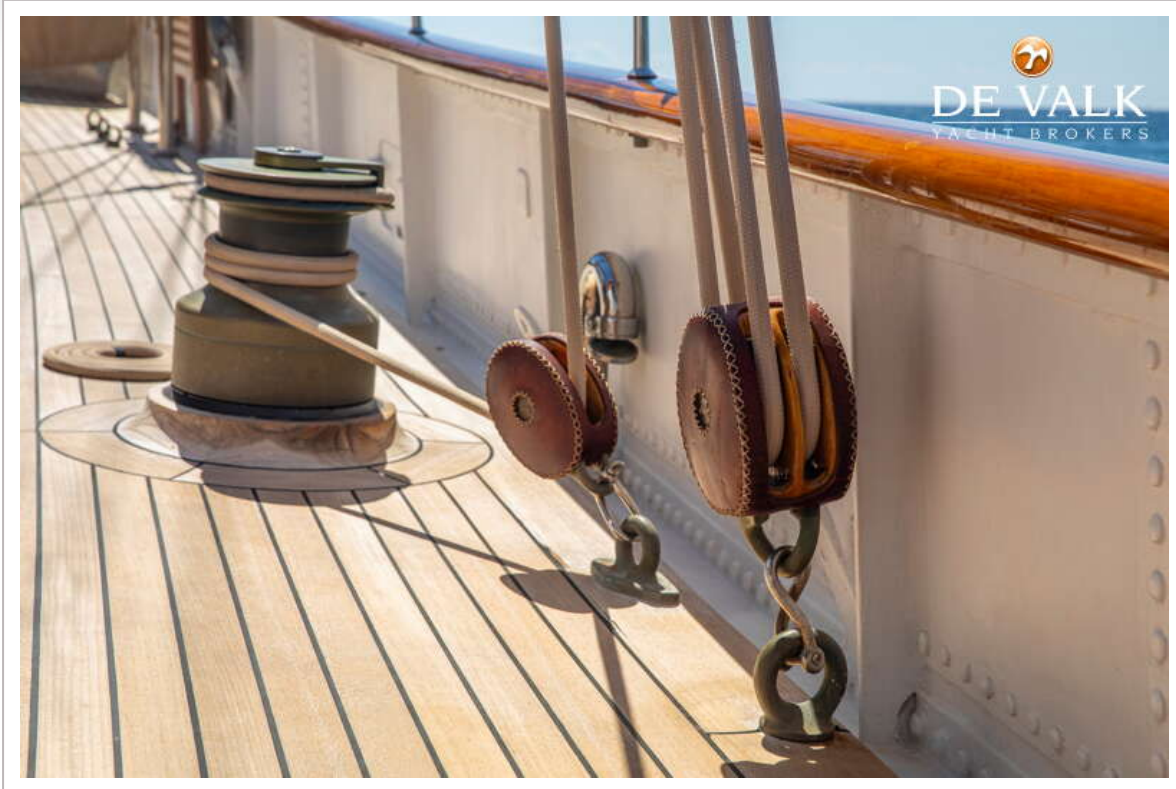
FEADSHIP KETCH



FEADSHIP KETCH



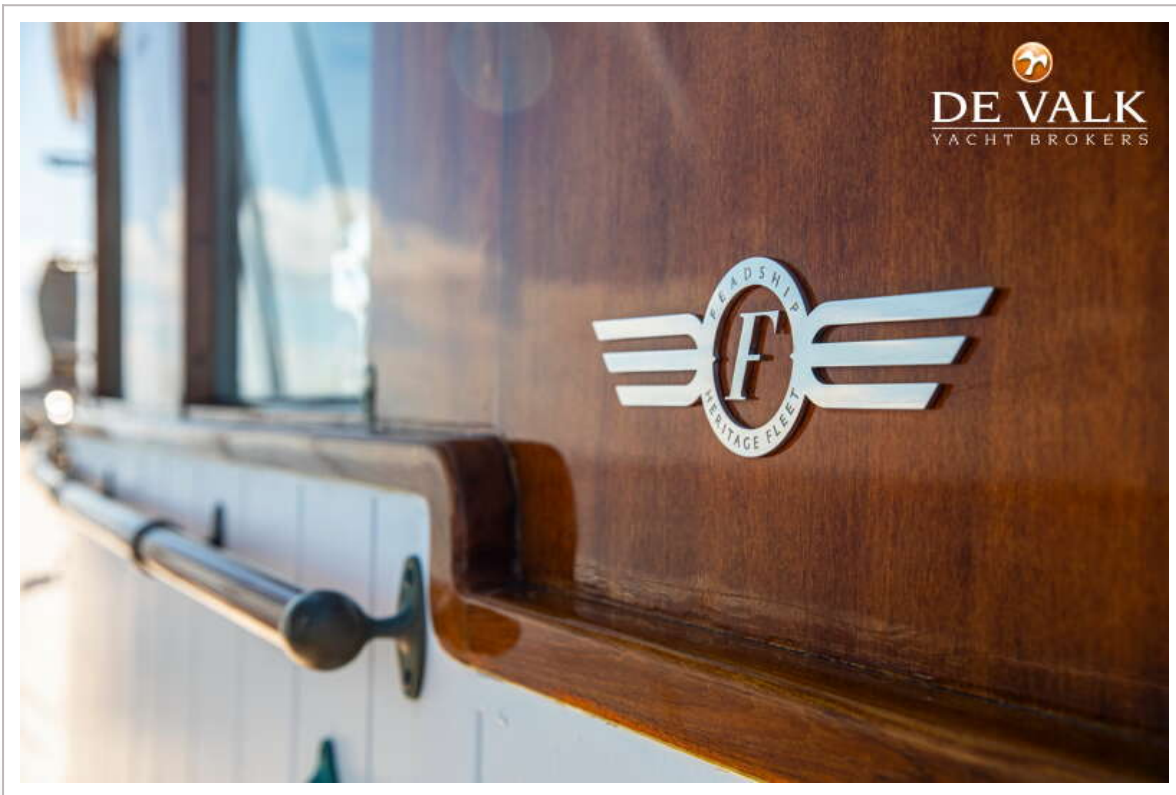
FEADSHIP KETCH



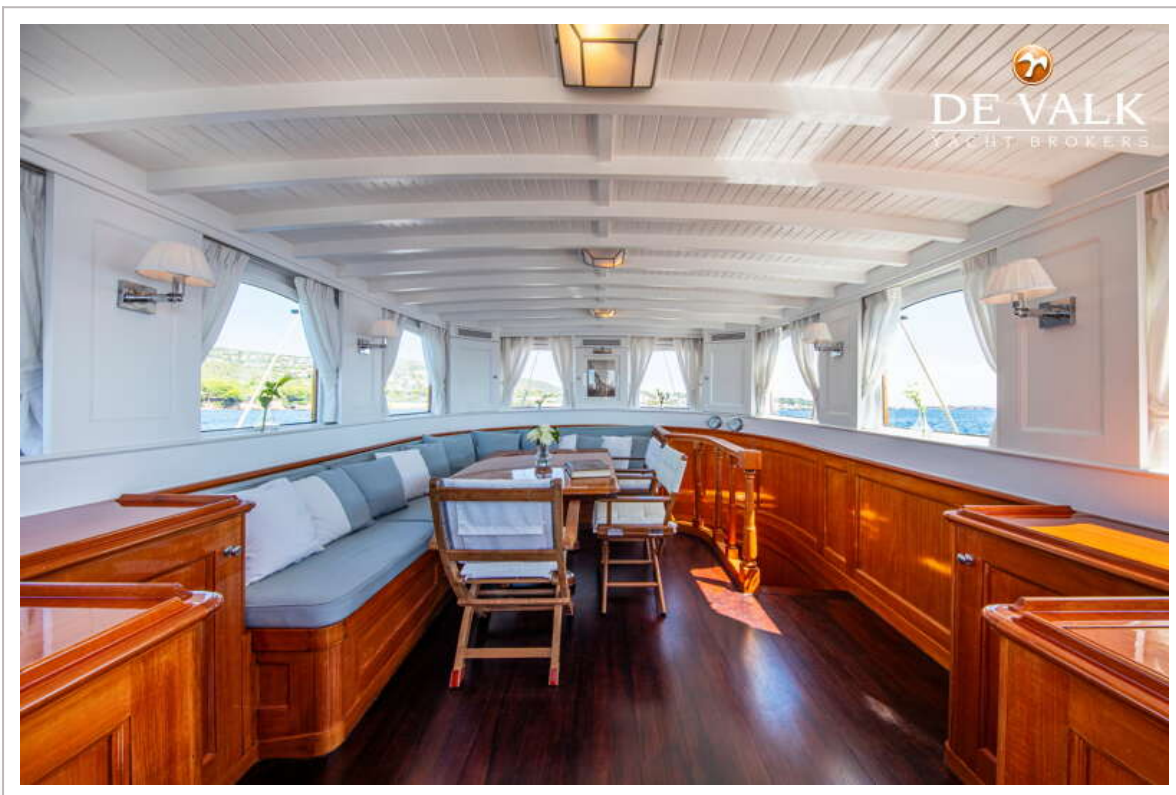
FEADSHIP KETCH



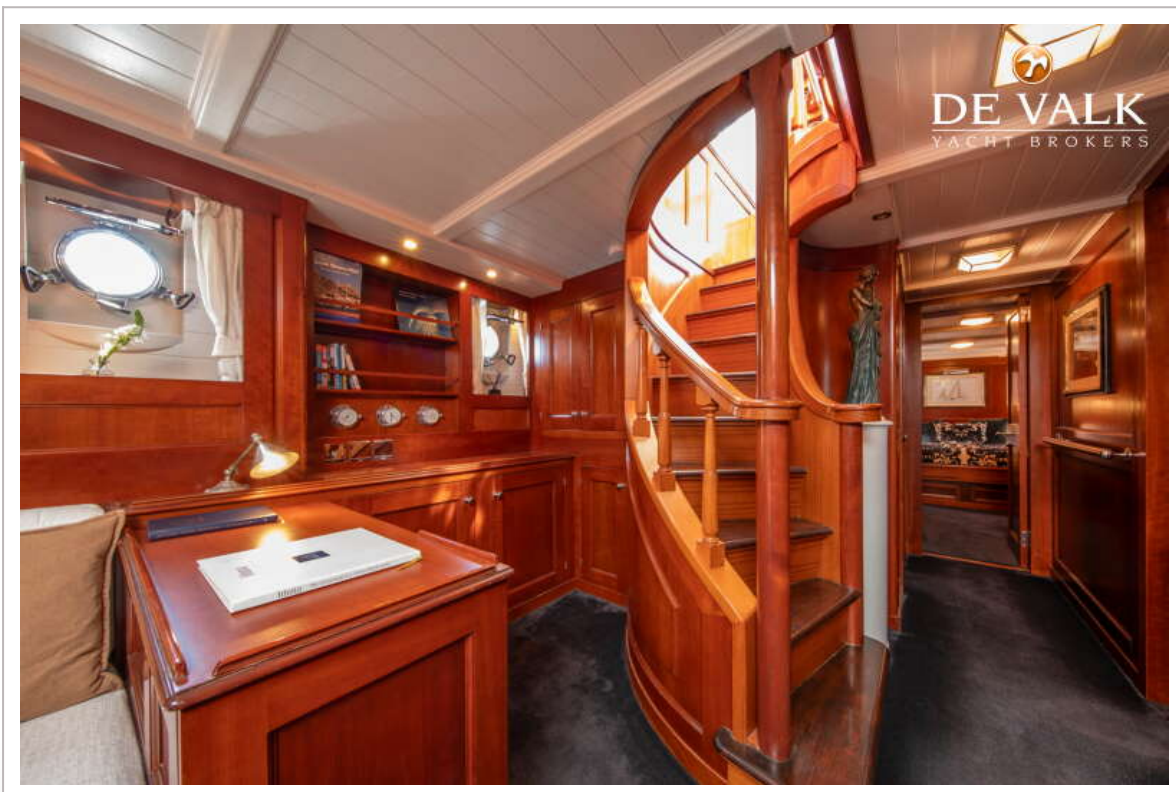
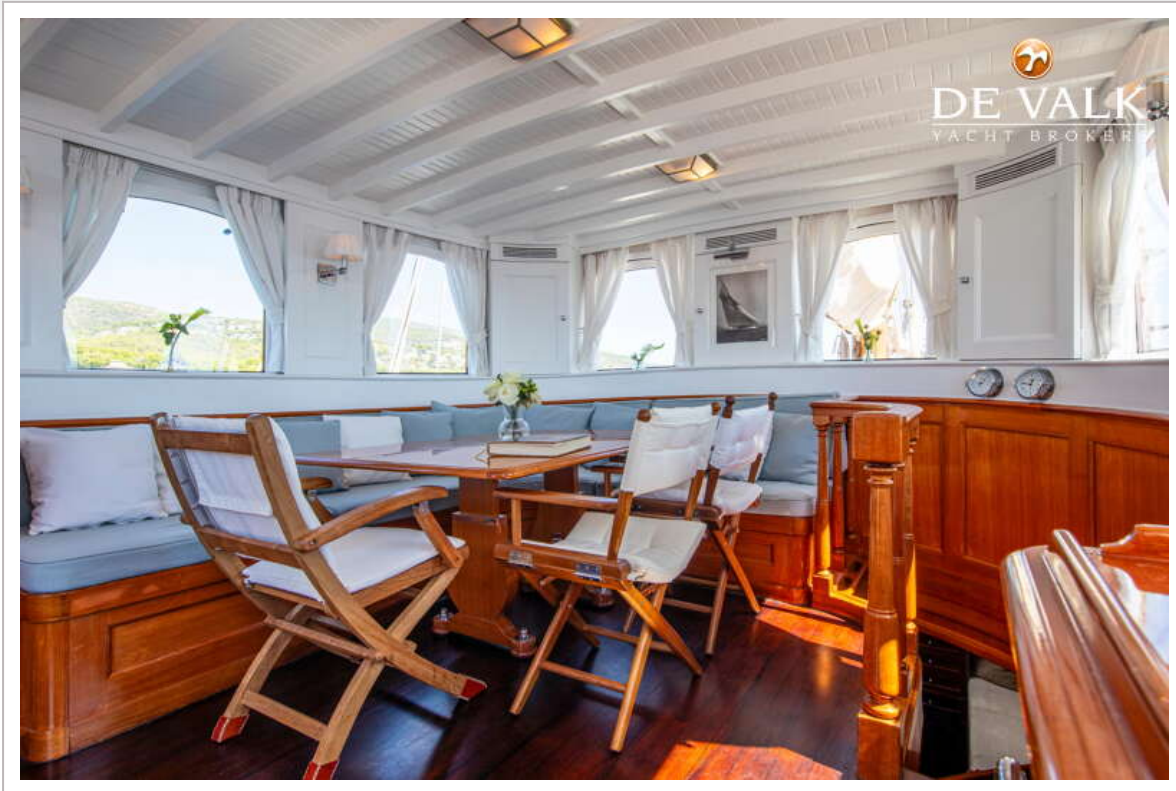
FEADSHIP KETCH



FEADSHIP KETCH



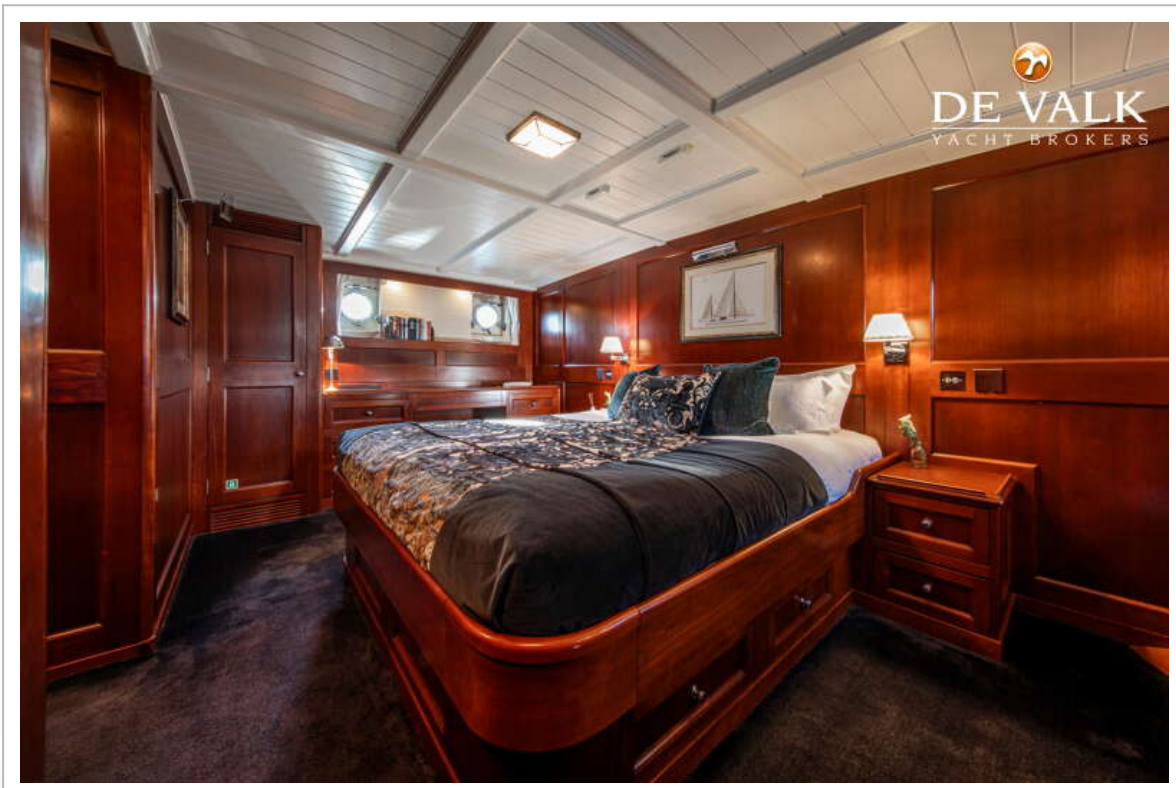
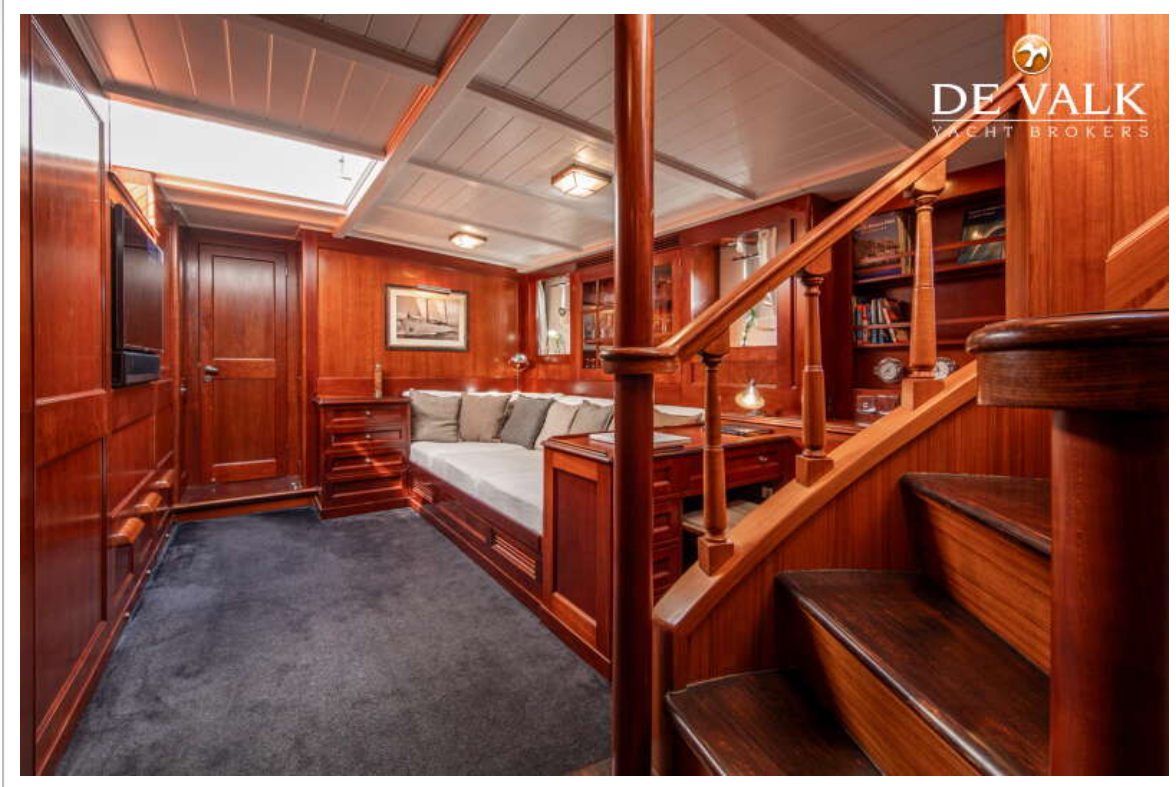
FEADSHIP KETCH



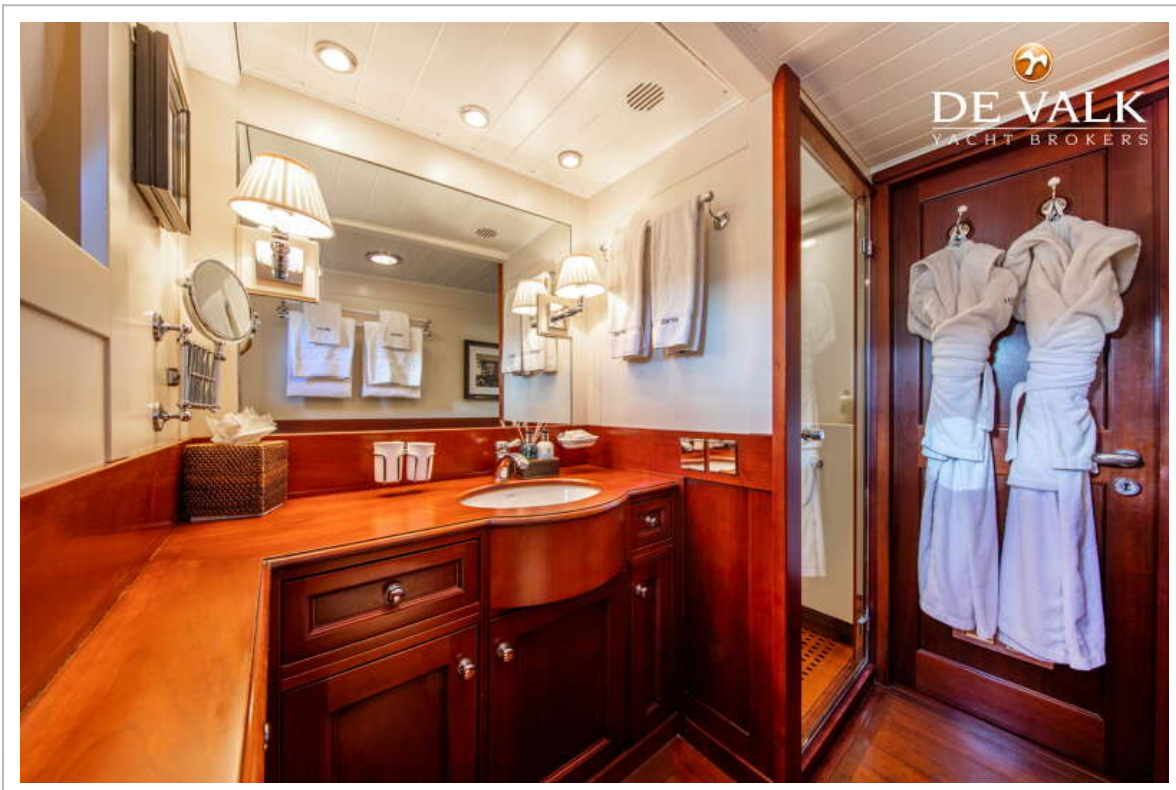
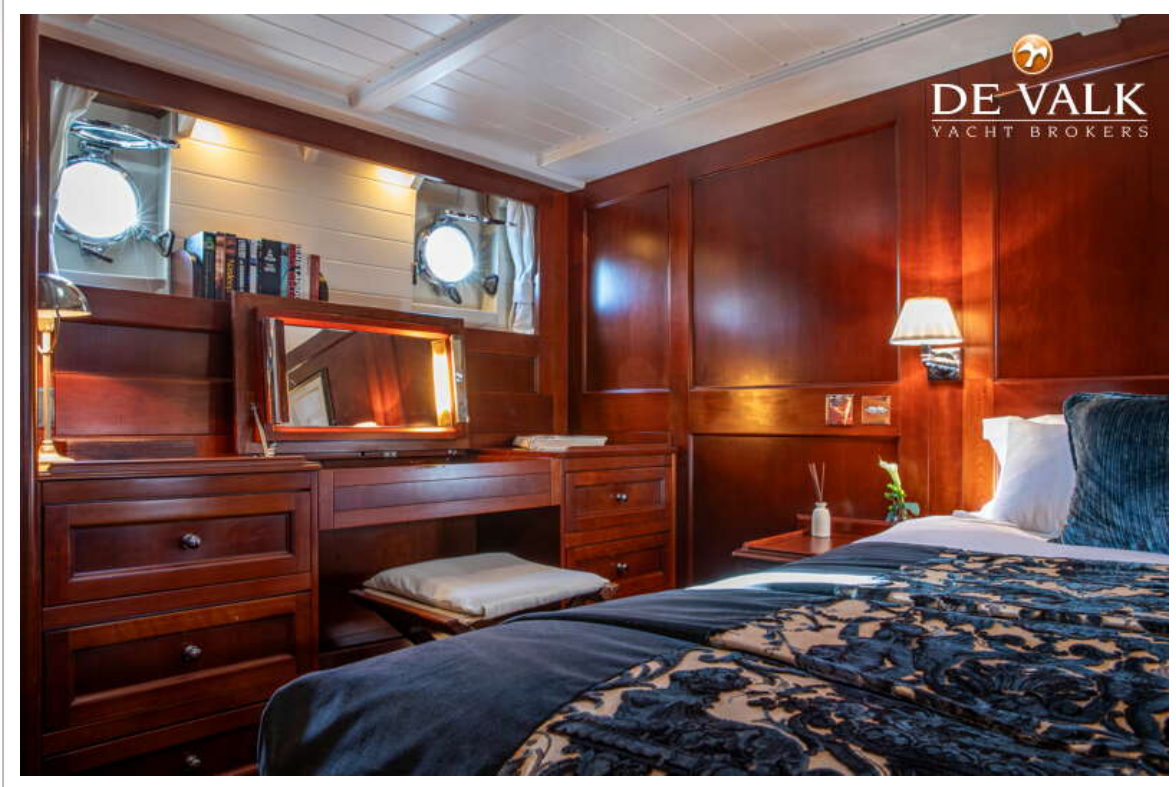
FEADSHIP KETCH



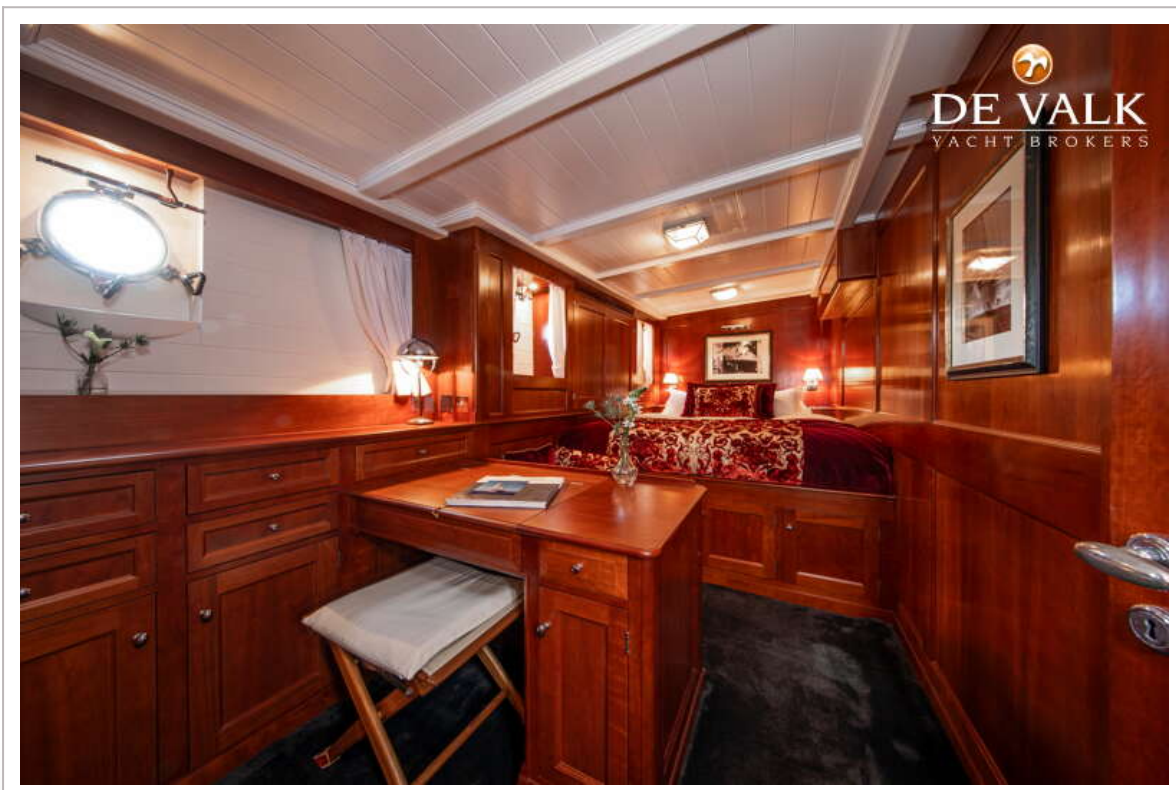
FEADSHIP KETCH



FEADSHIP KETCH



FEADSHIP KETCH



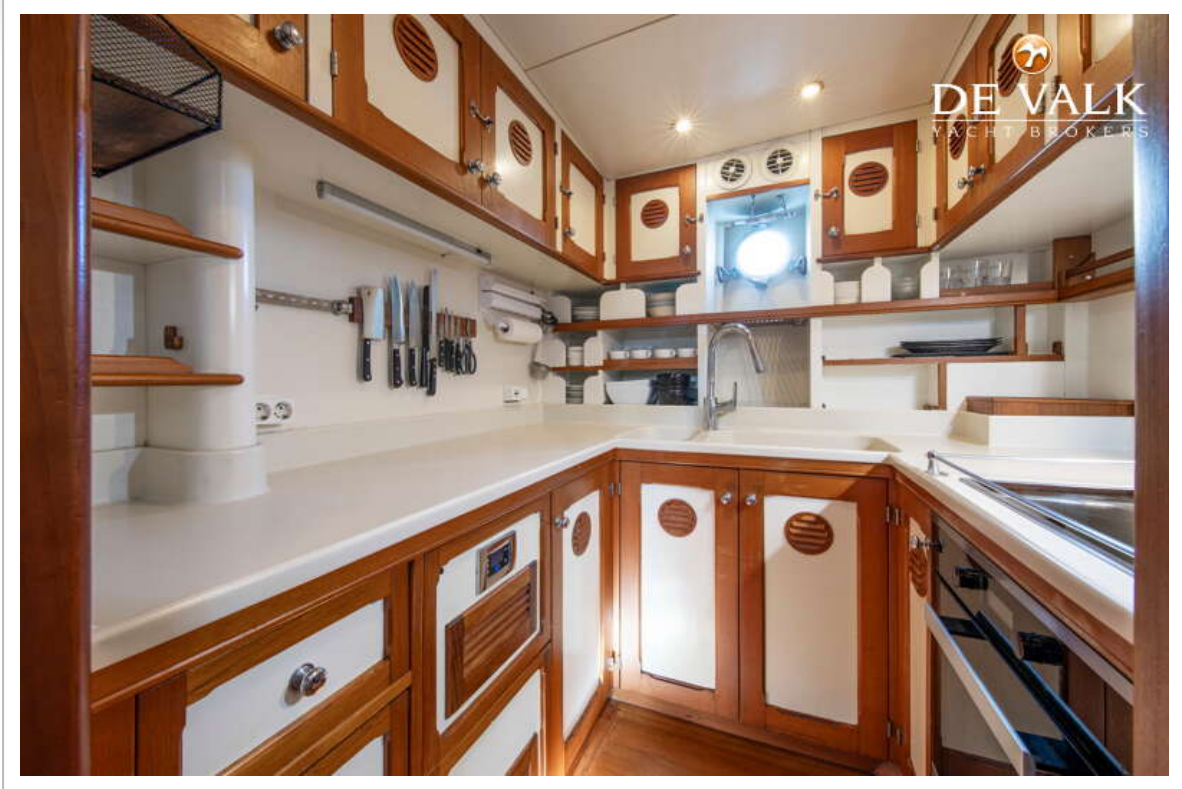
FEADSHIP KETCH



FEADSHIP KETCH



FEADSHIP KETCH



FEADSHIP KETCH



FEADSHIP KETCH

