



DE VALK  
YACHT BROKERS



## VOLKERAK 46



DE VALK  
YACHT BROKERS

## KOMMENTARE DES MAKLERS

A very well taken care of Ketch, Motor-sailer with newly renovated centerboard, teak-deck, masts etc. Perfect to live onboard or stay long time. Cosy with Dickinson heater and well equipped. There is a very good documentation of the boat itself as well as all renovations and upgrades of the boat with photos and costs. Depth centreboard up/down 1.45/2.70

*Per Engdahl*

## TECHNISCHE DATEN

<b>Maße</b>	14.00 x 4.00 x 1.45 (m)	<b>Werft</b>	Kuyper
<b>Baujahr</b>	1984	<b>Kabinen</b>	2
<b>Material</b>	Stahl	<b>Kojen</b>	5
<b>Motor(en)</b>	1 x Daf DD 575, 6 cyl diesel	<b>PS/kW</b>	105.00 (PS), 77.28 (kW)
<b>Angebotspreis</b>	€ 199.000 (MwSt. Bezahlt)	<b>Liegeplatz</b>	contact sales office

## KONTAKT

<b>Verkaufsbüro</b>	De Valk Sweden	<b>Telefon</b>	+46 72 358 50 74
<b>Adresse</b>	385 98 Bergkvara SE	<b>E-Mail</b>	sweden@devalk.nl

## HAFTUNGSAUSSCHLUSS

Diese Angaben erfolgen nach bestem Wissen, können jedoch nicht garantiert werden.



## ALLGEMEIN

<b>Modell</b>	VOLKERAK 46
<b>Typ</b>	Motorsegler
<b>Rumpflänge (m)</b>	14,00
<b>Wasserlinienlänge (m)</b>	12,35
<b>Breite (m)</b>	4,00
<b>Tiefgang (m)</b>	1,45
<b>Durchfahrtshöhe (m)</b>	16,50
<b>Durchfahrtshöhe min (m)</b>	2,60
<b>Stehhöhe (m)</b>	2,00
<b>Baujahr</b>	1984
<b>Lancierung</b>	1990
<b>Werft</b>	Kuyper
<b>Land</b>	Niederlande
<b>Entwerfer</b>	Ir. A. Volker
<b>Gewicht (t)</b>	17
<b>Ballast (Ton)</b>	Loodballast 4 tons Kielmidzwaard 1 ton
<b>CE Norm</b>	A
<b>Rumpfmateriäl</b>	Stahl
<b>Rumpffarbe</b>	White
<b>Rumpfform</b>	Round bilge with keel. Depth with keel down is 2.70
<b>Art Kiel</b>	Centerboard corten steel. Restore 2020 New electric winch 2019.
<b>Schlingerkielen</b>	ja
<b>Material Aufbauten</b>	Steel
<b>Deckmaterial</b>	Steel
<b>Deck Finish Aufbauten</b>	Teak
<b>Fenster Einfassung</b>	Windows Hora profile copper with insulated double glazing.
<b>Decks Luke</b>	Stainless steel.
<b>Bullauge</b>	Portholes and light edges bronze. Wooden teak edges lacquered.
<b>Isolation</b>	Isolation under floor: X-trem foam sheets. Black polyethylene.
<b>Treibstofftank (Liter)</b>	Integrated in the bottom of the ship 500 litre



<b>Treibstofftank 2 (Liter)</b>	Integrated in the bottom of the ship 500 litre
<b>Treibstof Tagestank (Liter)</b>	Stainless steel 100 litre, 2019
<b>Trinkwassertank (Liter)</b>	2 x 460 litre
<b>Fäkaelien Tank (Liter)</b>	60 litre
<b>Grauwassertank (Liter)</b>	2 X 175 litre
<b>Radsteuerung</b>	Steering wheels, made by Stazo teak.
<b>Innerhalb Steuerung</b>	ja
<b>Aussen Steuerung</b>	Treated with Epifanes hardwood oil varnish.
<b>Weitere Info Rumpf</b>	Hull, superstructure and cockpit completely painted 2022

## UNTERKUNFT

<b>Kabinen</b>	2
<b>Kojen</b>	5
<b>Ruderhaus/Decksalon</b>	ja
<b>Heizung</b>	Dickinson Antarctic, oil heater. 4 Radiators
<b>Heizung 2</b>	Eberspächer, (2018) airtronic. January 2022 new engine installed
<b>Kartentisch</b>	ja
<b>Achterkabine</b>	ja
<b>Kombüse</b>	ja
<b>Arbeitsfläche</b>	ja
<b>Spülbecken</b>	ja
<b>Herd</b>	Four-burner (Ikea), type NUTID, 230 volt (2011) Induction.
<b>Ofen</b>	Oven: new 2025 Wilfa 3 in 1: oven, air fryer and microwave
<b>Kuhlschrank</b>	Refrigerator with separate compressor, Vitrifrigo, 24 volts
<b>Gefrier Truhe</b>	Fridge 45 watt, 130 liters incl. freezer compartment (2019
<b>Warmwasser System</b>	Boiler Isotemp, inhoud 30 liter, 1000 watt
<b>Wasserdruk System</b>	ja
<b>Kochend-Wasserhahn</b>	ja
<b>Kaffeemaschine</b>	Quick Mill 0820 Espresso Machine. (2018)
<b>Eignerkabine</b>	New Flexima mattress with topper.
<b>Kleiderschrank</b>	ja



<b>Badezimmer</b>	ja
<b>Toilette System</b>	PAR, automatic water system pump, 31395-0294, 24 volt
<b>Handwaschbecken</b>	ja
<b>Dusche</b>	ja
<b>Gästekabine 1</b>	Aft: Froli Bed system plus topper
<b>Kleiderschrank</b>	ja
<b>Toilette System</b>	ja
<b>Handwaschbecken</b>	ja
<b>Dusche</b>	ja
<b>Weitere Info</b>	Heating: 3 Mill electric panel heaters. 2022 and 2024
<b>Waschmaschine</b>	Candy washingmachine. New 2023.
<b>Weitere Info</b>	More detailed info in separate document

## MASCHINEN

<b>Motoranzahl</b>	1
<b>Marke</b>	Daf
<b>Typ</b>	DD 575, 6 cyl
<b>PS</b>	105
<b>kW</b>	77.28
<b>Kraftstoffart</b>	Diesel
<b>Installiert im Jahr</b>	1990
<b>Überholung im Jahr</b>	Spring 2018 Engine maintenance 2020 and 2022 Engine maintenance
<b>Höchstgeschwindigkeit (Kn)</b>	8.5 knots
<b>Marschgeschwindigkeit (Kn)</b>	6
<b>Antrieb</b>	Schraubenwelle
<b>Welle Dichtung</b>	Grease-lubricated propeller shaft: Shaft: renovated in 2022
<b>Bugschraube</b>	Vetus, 220 kgf, type BoW22024, 24 volts, diameter 300 mm.
<b>Propeller Typ</b>	Fixed
<b>Propellerblätter</b>	3 blades
<b>Hand Bilgenpumpe</b>	ja



<b>Elektrische Bilgenpumpe</b>	ja
<b>Generator</b>	Mobiele generator: Honda EU 22i, serie nr 31798 (2019), 2.2 kw
<b>Batterien</b>	2 New in 2020
<b>Starterbatterie</b>	ja
<b>Versorgungsbatterie</b>	New in 2023
<b>Bugschraubebatterie</b>	New in 2020
<b>Batterie Monitor</b>	Victron Battery Monitor BMV 602 Victron Color-Control GX Monito
<b>Batterie Ladegerat</b>	Victron Skylla 24/50, input 110/220/240 volt. output 24 volt 50A
<b>Batterie Ladegerat/Umwandler</b>	Victron Quattro 5000 (2009), lader & omvormer
<b>Solar panele</b>	Sunware. New in 2023
<b>Landstrom</b>	ja
<b>Trenn transformator</b>	Victron Isolation transformer, 3600 watt. Nieuw 2024.
<b>Weitere Info</b>	Internet. • Teltonika Wifi, router, type RUT 955 LTE. 2018
<b>Weitere Info</b>	Alfa Tube 2H Wifi antenna mizzen mast 2018.

## NAVIGATION

<b>Kompass</b>	Cestrel Moore Compass
<b>Elektrisches Kompass</b>	Raymarine SPX-30 core pack with fluxgate compass and rudder pos
<b>Windlupe anzeige</b>	Raymarine triducer (2019): Windvaan: E22078
<b>Tochter anzeige</b>	Raymarine triducer (2019): Display. I70s. 2 times E30327
<b>UKW</b>	VHF, sailor, type RT 144
<b>Autopilot</b>	Raymarine autopilot. Type 2 24V Pump. 2021
<b>Ruderwinkel Anzeige</b>	VDO. Doesn't work. However, page made on autopilot display
<b>Radar</b>	Raymarine autopilot. Type 2 24V Pump. 2021
<b>Plotter</b>	Raymarine plotter (2018). ES series eS75 MFD Wifi. E70263
<b>WIFI Antenne</b>	Alfa Tube 2H Wifi antenna mizzen mast 2018.
<b>AIS Empfänger</b>	True Heading. AIS CTRX Class B Responder. TRU2494 2009. Main swi
<b>AIS Transceiver</b>	True Heading. AIS CTRX Class B Responder. TRU2494 2009.
<b>Navigation Beleuchtung</b>	ja



Weitere Info	SSB radio Kenwood R-5000 nr 8020322, AC 120/220/240 volts, dc 12
Weitere Info	Remote Controller autopilot. S100 E15024

## AUSRÜSTUNG

Sonnenschirm	ja
Anker	Rocna 33kg. 2022.
Ankerkette	50 meters of chain laid out, checked and 10 meters of indication
Beiboot	Dinghy Nimarine RIB 310 2018
Ausserborder	Electric. Torqueedo 1003 2018
Davits	ja
Davits bedienung	ja
Heckkorb	ja
Bugkorb	ja
Rettungsinsel	SeaSafe 6 people,
Rettungsinsel (Pers)	6
Letzte Wartung Rettungsinsel	2021
Schwimvesten	4
Rettungsboje	Round orange hard lifebuoy
Sicherheitsleine auf Deck	Lifesling
Scheibenwischer	Marin Windshield Wiper. Port front
Fenderkissen	ja
Festmacher	ja
TV	ja
Feuerlöscher	2 fire extinguishers, approved
Automatische Löschesystem	2 times Fire Suppression Systems. 25 sec. and 50 seconds.
Weitere Info	Carbon monoxide detector Kidde 5CO

## RIGG

Rig	Masts Oregon pine, renovated 2019. 2022: 3 new coats of lacquer
-----	---



<b>Stehendes Gut</b>	Stainless steel, main rigging 10 mm, bottom rigging 8 mm Miz 7m
<b>Großsegel</b>	Brown dacron 31,5 m <sup>2</sup>
<b>Großsegel-Persenning</b>	ja
<b>Besan</b>	Brown dacron 13.5 m <sup>2</sup>
<b>Besansegel-Persenning</b>	ja
<b>Fock</b>	Brown dacron 12 m <sup>2</sup>
<b>Rollreffanlage</b>	2024 Riggmaster Furler system from Facnor.
<b>Genua-Persenning</b>	ja
<b>Blister</b>	Red and white halfwinder 95 m <sup>2</sup>
<b>Großer Klüver</b>	Brown dacron 37 m <sup>2</sup>
<b>Trysegel</b>	8.0 m <sup>2</sup> oranje dacron
<b>Sturmfock</b>	8.0 m <sup>2</sup> oranje dacron
<b>Genua Schotwischen</b>	Barbarossa ST bronze, four pieces
<b>Fall Wischen</b>	Bronze, four pieces
<b>Reff Wunsch</b>	Barbarossa bronze, three pieces
<b>Weitere Info</b>	Winch for keel centerboard:Warn, type RT30, 24 volt DC (2019)

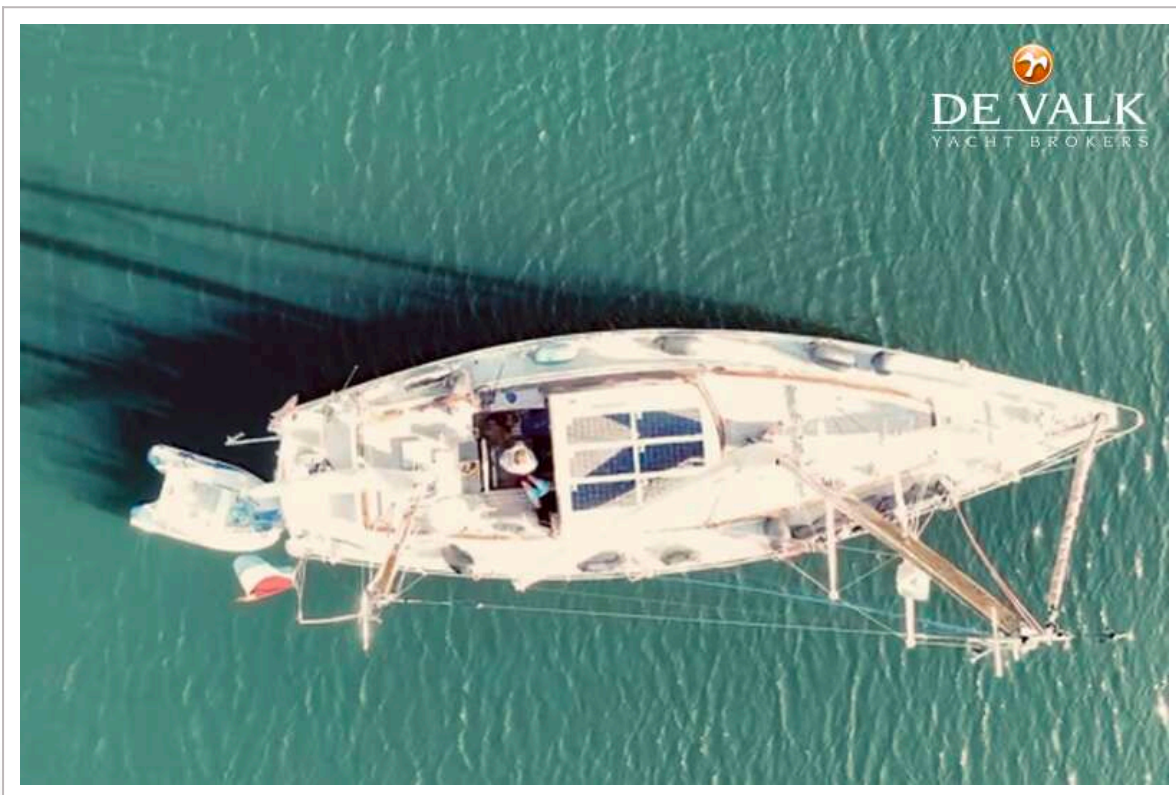


# VOLKERAK 46





# VOLKERAK 46

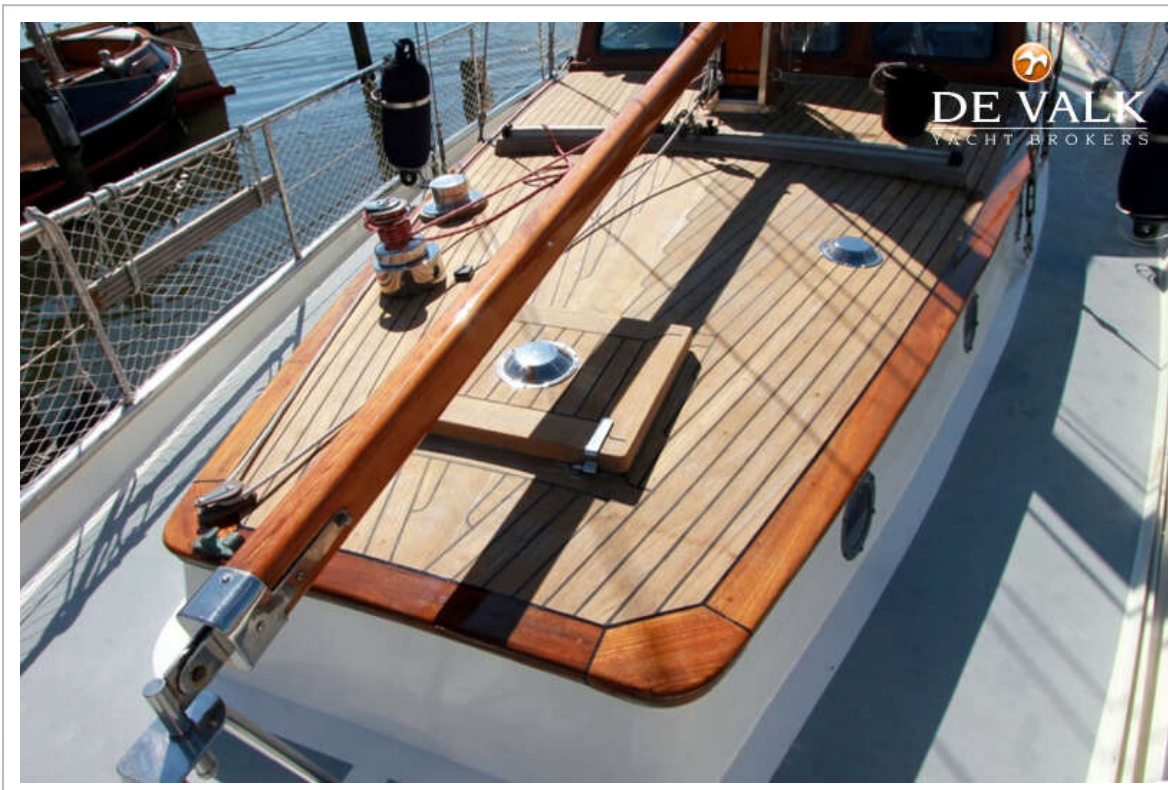




# VOLKERAK 46



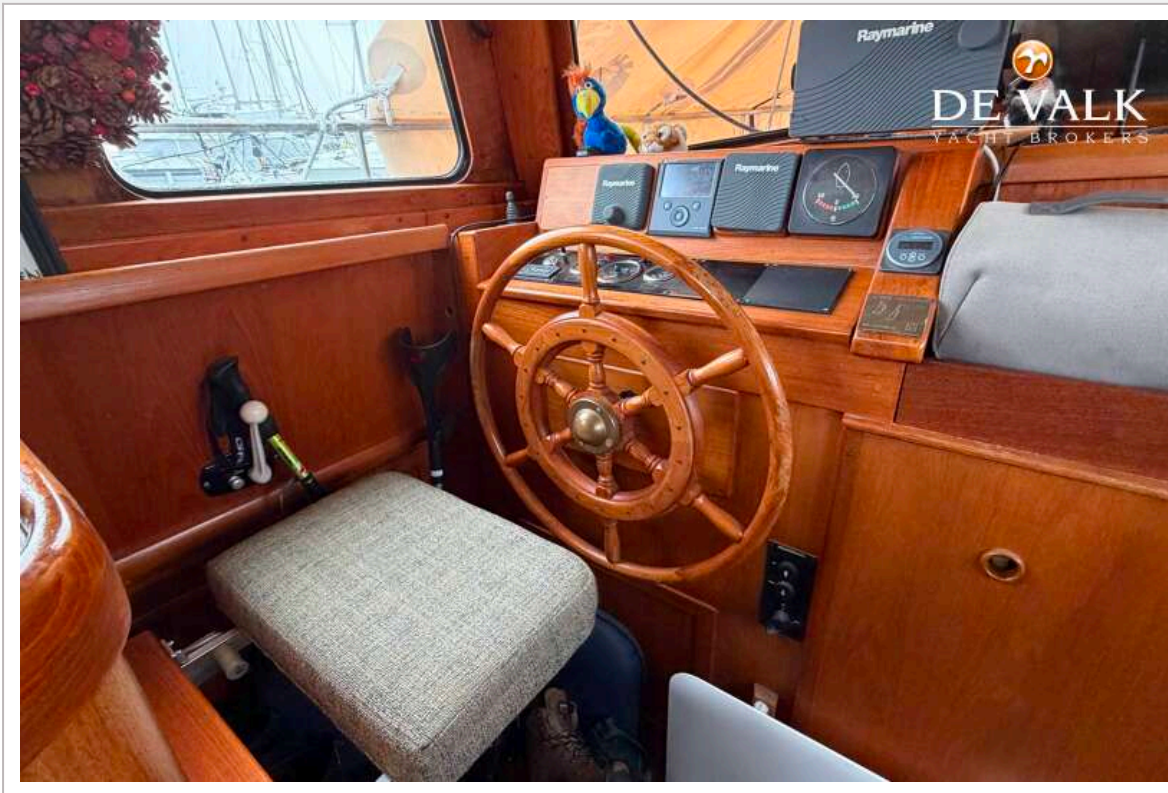
# VOLKERAK 46

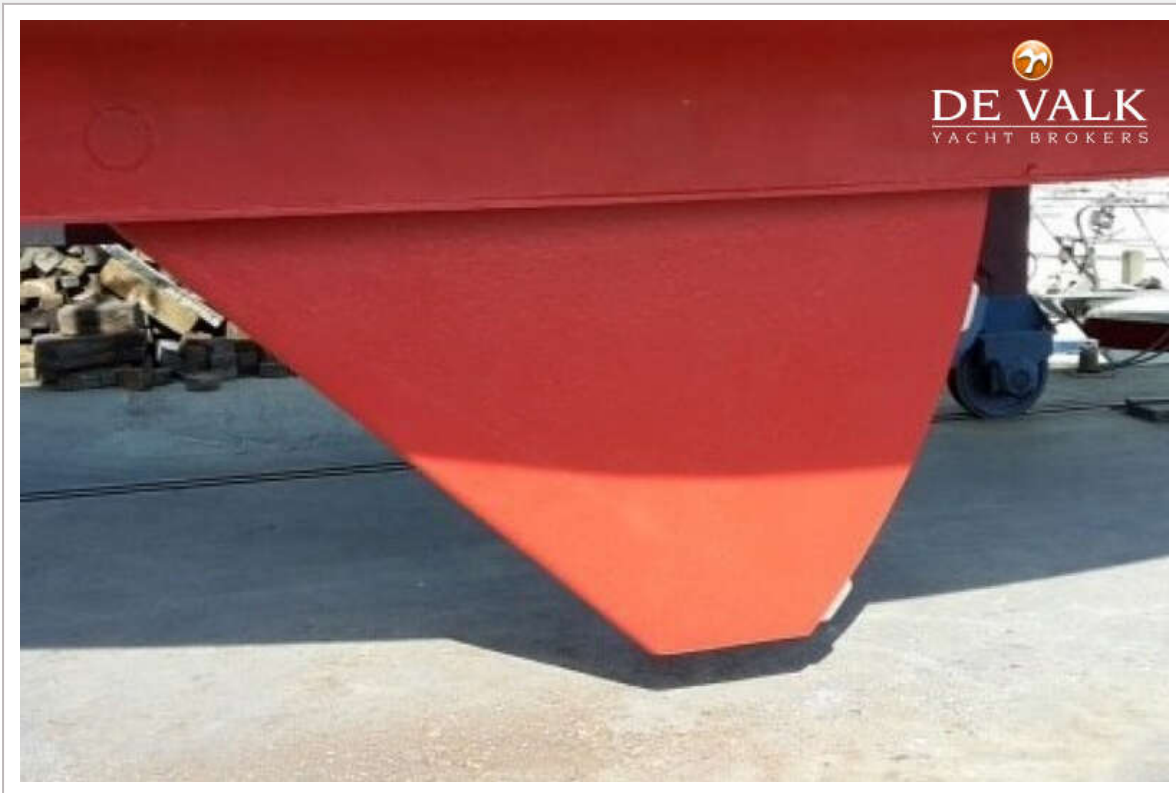


# VOLKERAK 46

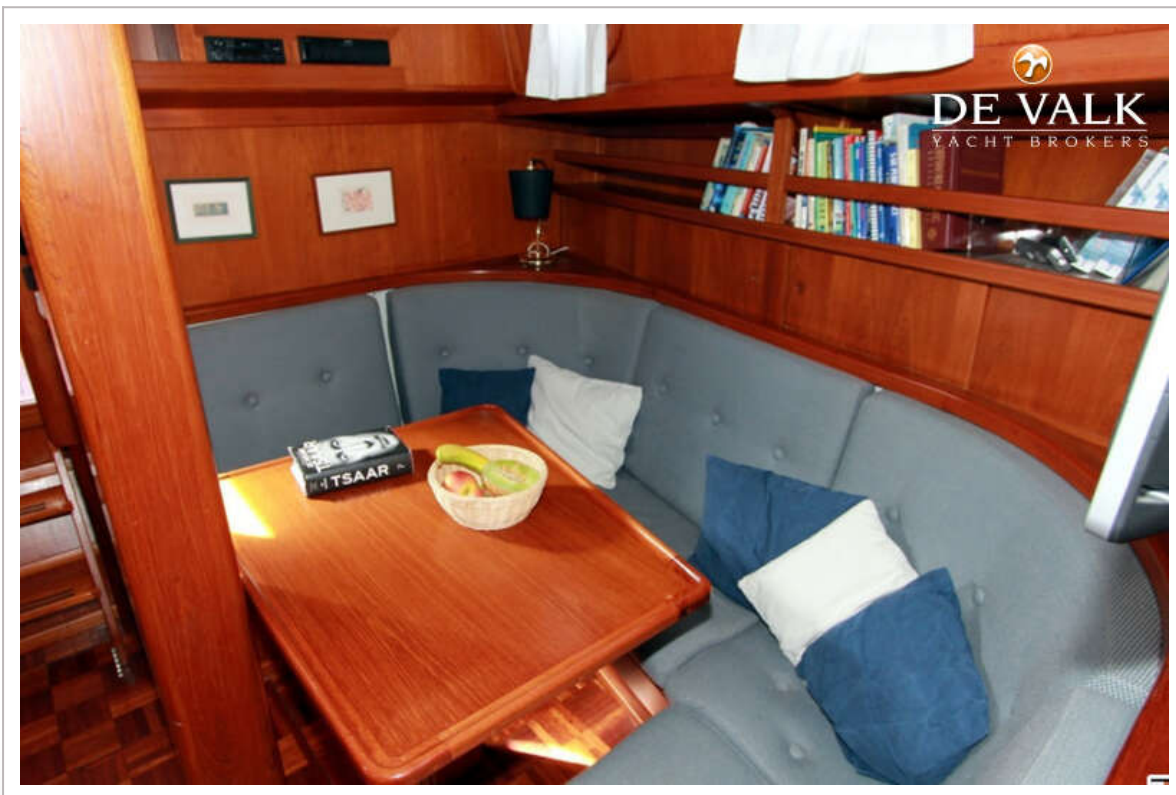
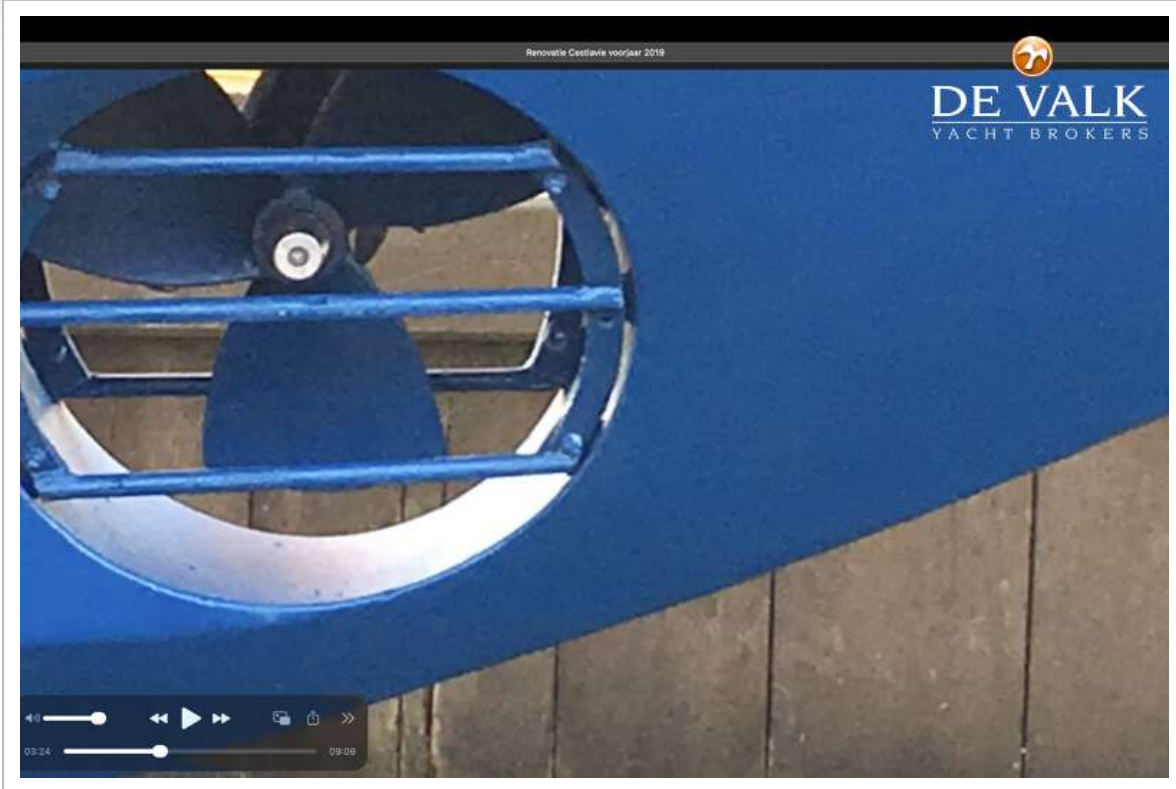


# VOLKERAK 46

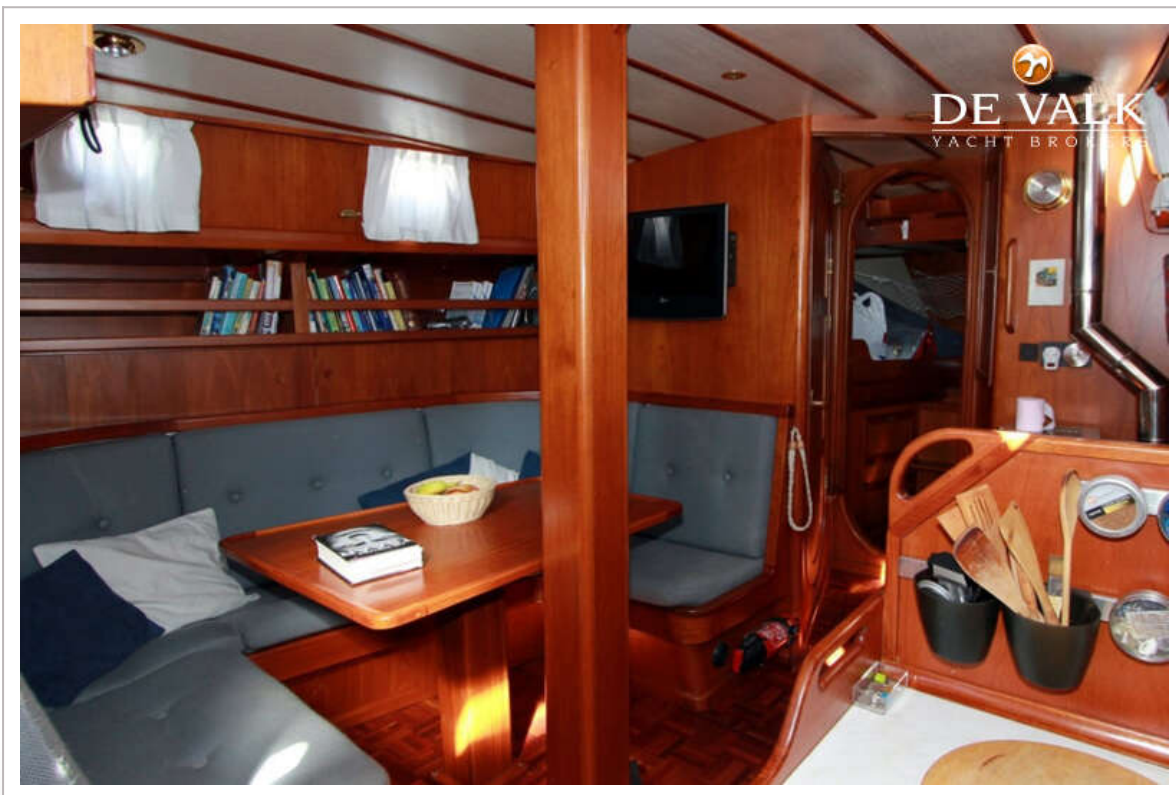
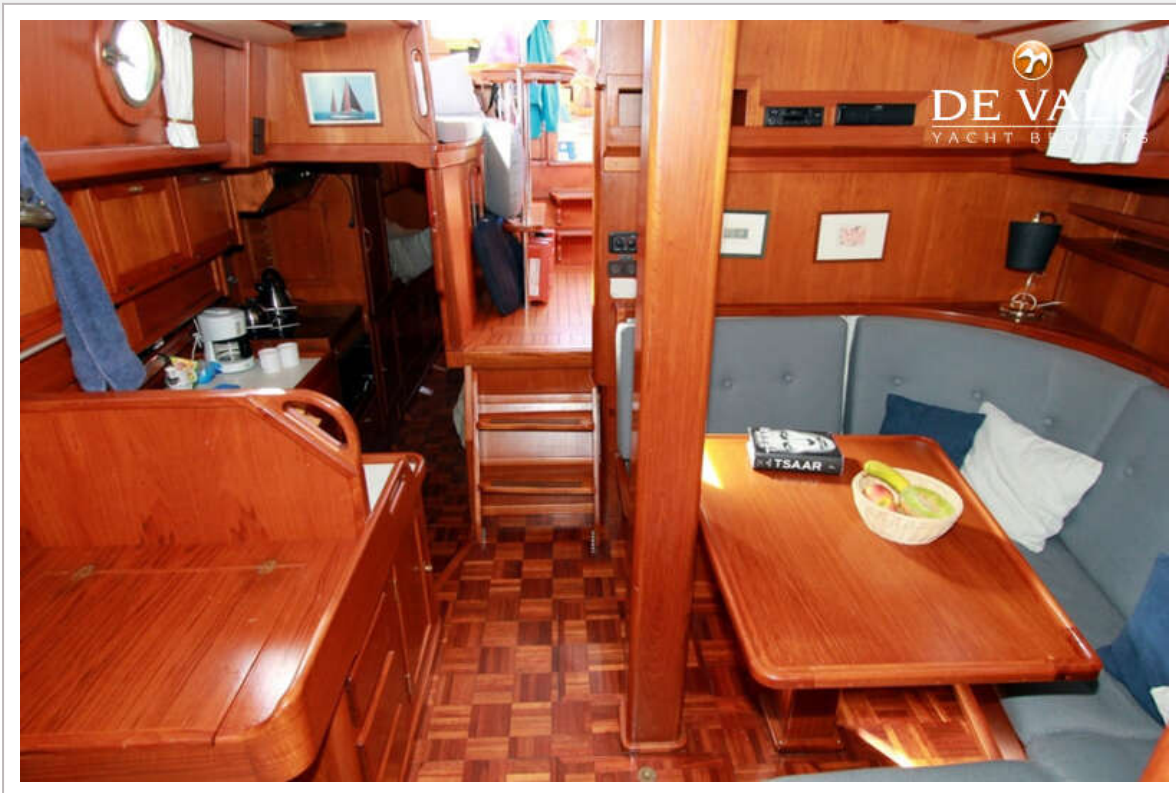


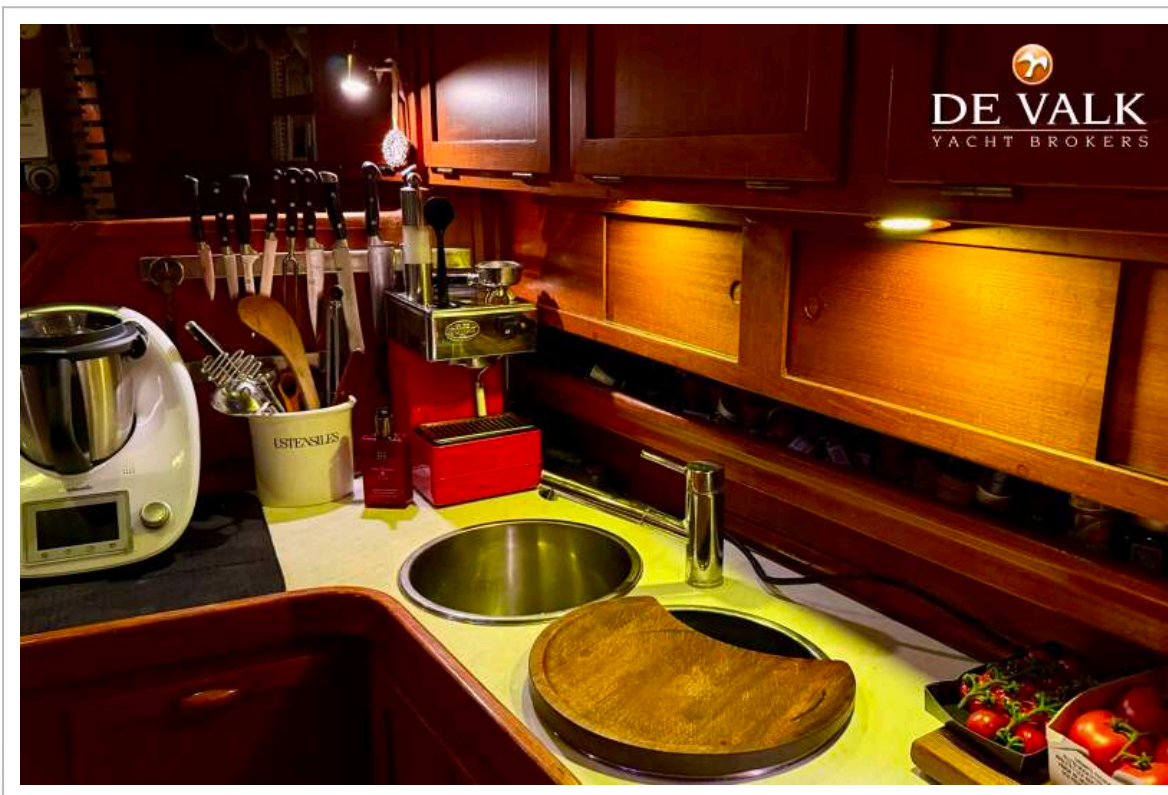
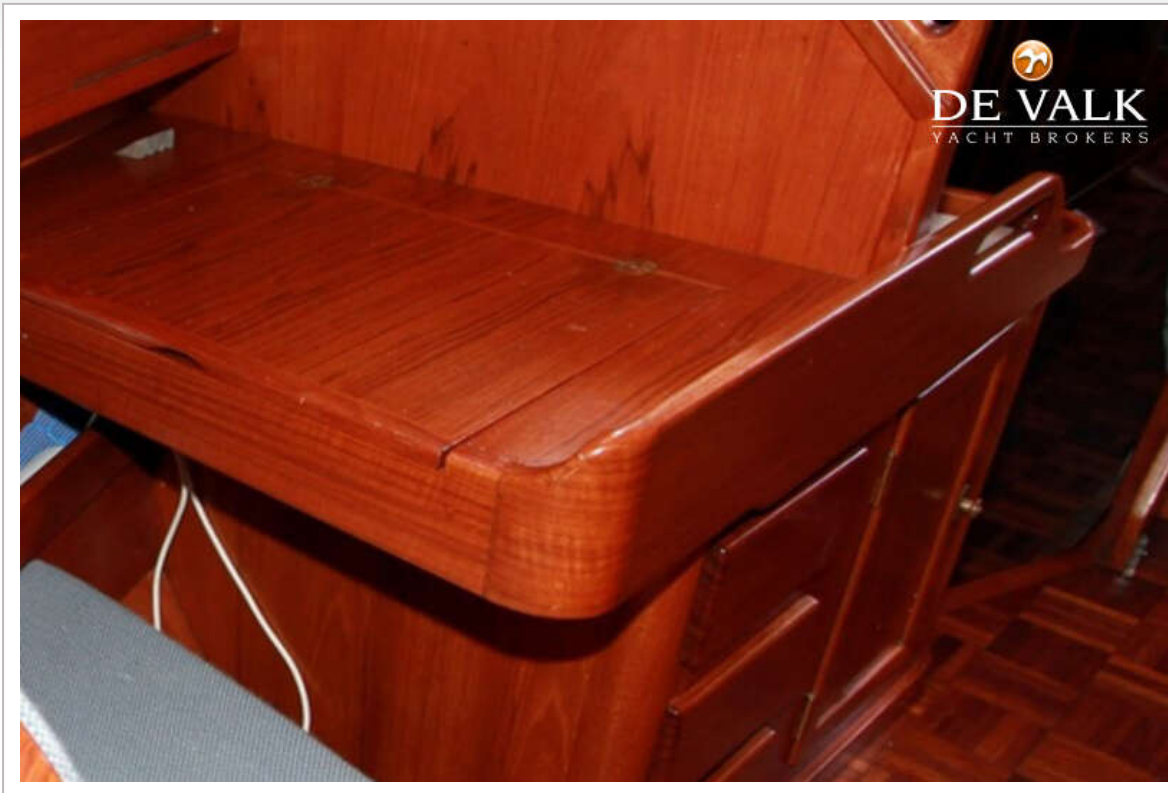


# VOLKERAK 46



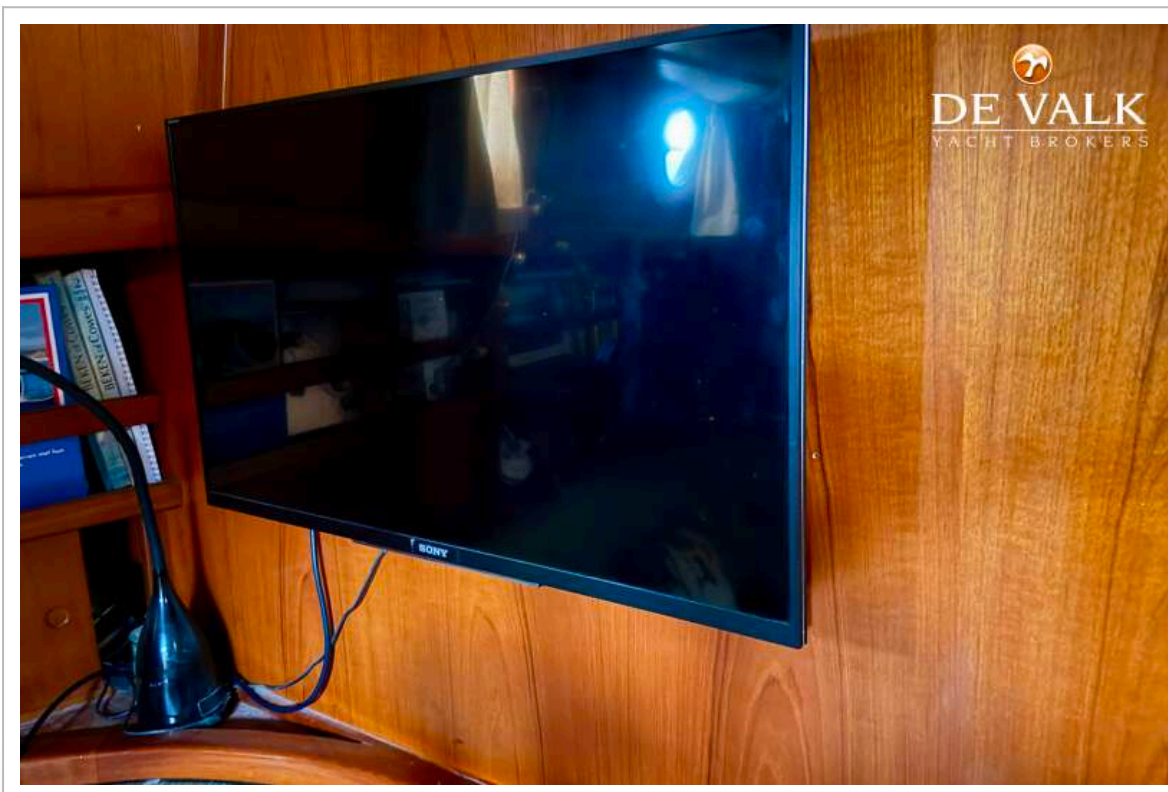
# VOLKERAK 46





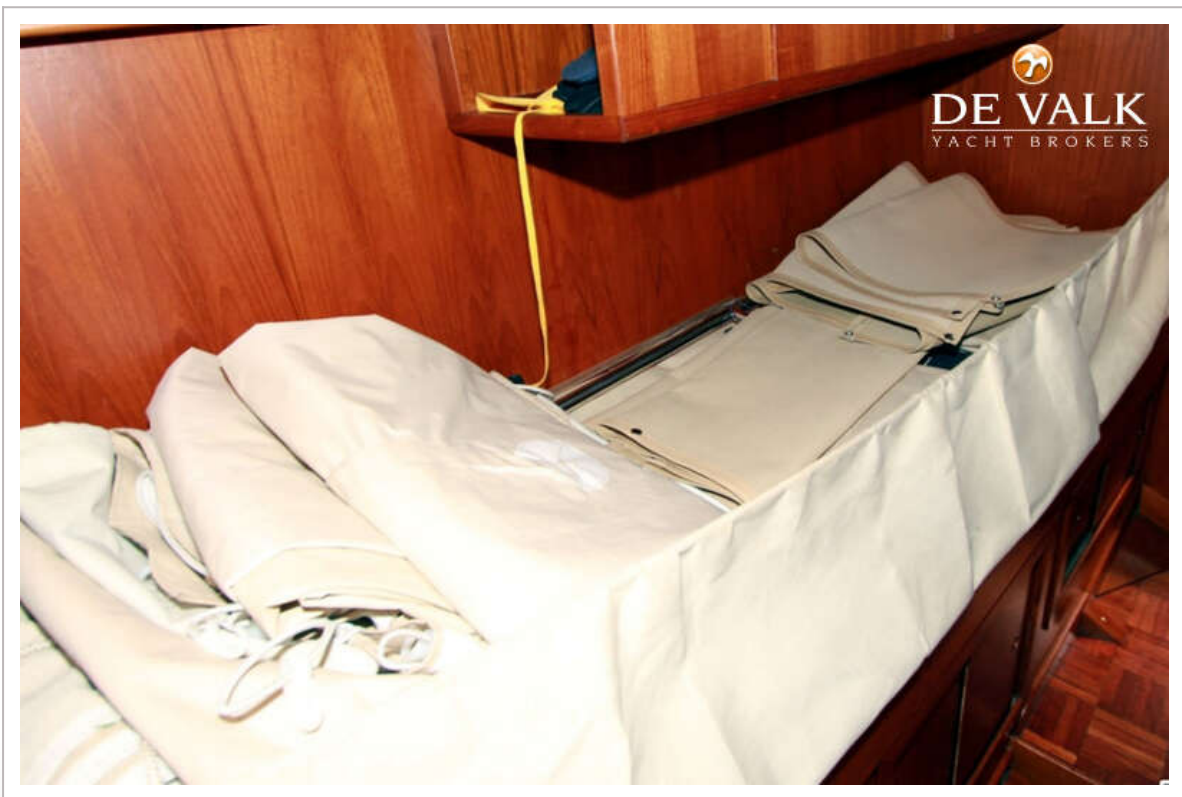
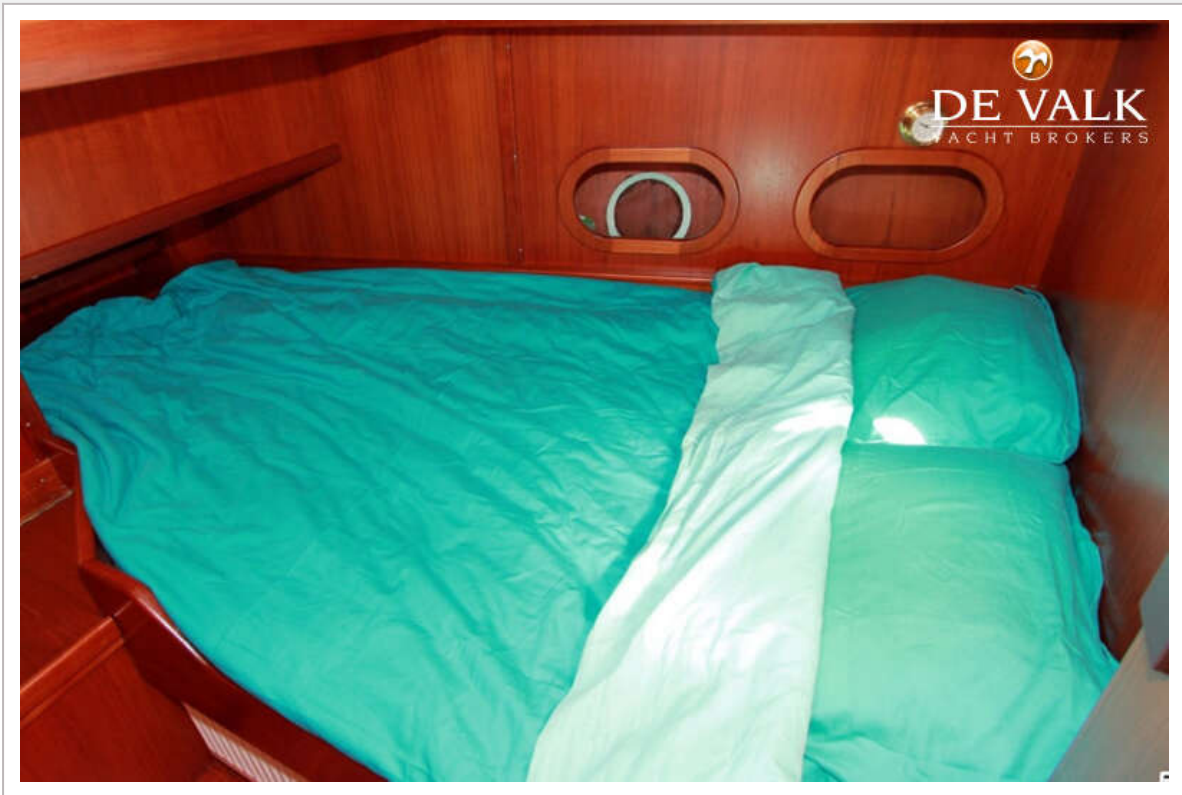


# VOLKERAK 46



# VOLKERAK 46







# VOLKERAK 46

