



DE VALK  
YACHT BROKERS



FINYA 75



DE VALK  
YACHT BROKERS

## KOMMENTARE DES MAKLERS

Finya 75, a go anywhere capable performance yacht. Beautiful lines, in more than fair condition with a roomy light interior. For comfortable shorthanded cruising or with a small crew. Present owner replaced many systems. Although not being used in 2 years, we just sailed her from Tunis to Valencia without any problems. Previous asking price EUR. 499.000 She will be auctioned on Febr. 21 in cooperation with Schipveiling-BVA Auctions. Further info and viewing days: [https://bit.ly/Auction\\_Finya75](https://bit.ly/Auction_Finya75). Opening price € 130,000, offers can be done online as per Febr. 14.

*Hans Visser*

## TECHNISCHE DATEN

|                      |                              |                   |                          |
|----------------------|------------------------------|-------------------|--------------------------|
| <b>Maße</b>          | 22.86 x 5.60 x 2.55 (m)      | <b>Werft</b>      | Finya Yachts             |
| <b>Baujahr</b>       | 1991                         | <b>Kabinen</b>    | 3                        |
| <b>Material</b>      | GFK                          | <b>Kojen</b>      | 6                        |
| <b>Motor(en)</b>     | 1 x caterpillar 3208N diesel | <b>PS/kW</b>      | 210.00 (PS), 154.35 (kW) |
| <b>Angebotspreis</b> | verkauft (MwSt. )            | <b>Liegeplatz</b> | contact Amsterdam        |

## KONTAKT

|                     |  |                |                     |
|---------------------|--|----------------|---------------------|
| <b>Verkaufsbüro</b> | De Valk Amsterdam B.V.                               | <b>Telefon</b> | +31 (0)35 5829014   |
| <b>Adresse</b>      | Marinaweg 8 (postal address)<br>1361 AC Almere<br>NL | <b>E-Mail</b>  | amsterdam@devalk.nl |

## HAFTUNGSAUSSCHLUSS

Diese Angaben erfolgen nach bestem Wissen, können jedoch nicht garantiert werden.



## ALLGEMEIN

|                              |   |
|------------------------------|---|
| <b>Modell</b>                | FINYA 75  |
| <b>Typ</b>                   | Segelyacht  |
| <b>Rumpflänge (m)</b>        | 22,86   |
| <b>Wasserlinienlänge (m)</b> | 22,17   |
| <b>Breite (m)</b>            | 5,60  |
| <b>Tiefgang (m)</b>          | 2,55  |
| <b>Stehhöhe (m)</b>          | 2,20  |
| <b>Baujahr</b>               | 1991  |
| <b>Lancierung</b>            | 2014 after major refit  |
| <b>Werft</b>                 | Finya Yachts  |
| <b>Land</b>                  | Taiwan  |
| <b>Entwerfer</b>             | Rob ladd  |
| <b>Gewicht (t)</b>           | 41  |
| <b>CE Norm</b>               | NA  |
| <b>Rumpfmateriäl</b>         | GFK   |
| <b>Rumpffarbe</b>            | Blau Small local retouch needed, but looks further really good. |
| <b>Rumpfform</b>             | Rundspant   |
| <b>Art Kiel</b>              | Flossen Kiel  |
| <b>Material Aufbauten</b>    | GFK   |
| <b>Stossliste</b>            | Edelstahl   |
| <b>Deckmaterial</b>          | GFK   |
| <b>Deck Finish</b>           | Antirutsch Farbe  |
| <b>Deck Finish Aufbauten</b> | Antirutsch Farbe  |
| <b>Pflicht Bedeckung</b>     | Teak  |
| <b>Antifouling (Jahr)</b>    | 2018  |
| <b>Dorado Belüfter</b>       | 2 x stainless steel with guards                                 |
| <b>Fenster Einfassung</b>    | Aluminium   |
| <b>Fenster Material</b>      | Sicherheitsglas   |
| <b>Decksluke</b>             | 2 x Lewmar oversized & 11 Ocean series 60 (all 2015)            |
| <b>Bullauge</b>              | And 5 deck prisms (rebedded 2015)                               |



|   |   |
|---|---|
| <b>Radar Träger</b>                       | nicht klappbar Aluminium                                |
| <b>Treibstofftank (Liter)</b>             | Edelstahl 2498  |
| <b>Füllstandsanzeige (Treibstofftank)</b> | ja  |
| <b>Trinkwassertank (Liter)</b>            | Edelstahl 1325  |
| <b>Füllstandsanzeige (Trinkwasser)</b>    | ja  |
| <b>Fäkaelien Tank (Liter)</b>             | Edelstahl 227   |
| <b>Füllstandsanzeige (Fakaelientank)</b>  | ja  |
| <b>Fäkaelien Tankablauf</b>               | Deck Verbindung + Pumpe                                 |
| <b>Grauwassertank (Liter)</b>             | See Black water   |
| <b>Radsteuerung</b>                       | hydraulik Wagner  |
| <b>Innerhalb Steuerung</b>                | ja  |
| <b>Aussen Steuerung</b>                   | Kabelsteuerung Edson (Cables 2014)                      |
| <b>Not-Pinne</b>                          | ja  |
| <b>Weitere Info</b>                       | Advise to clean fuel tanks                              |
| <b>Weitere Info</b>                       | Stand up engine room                                    |
| <b>Weitere Info</b>                       | Portholes needs check, some are dripping at heavey sea. |

## UNTERKUNFT

|                            |   |
|----------------------------|---|
| <b>Kabinen</b>             | 3   |
| <b>Kojen</b>               | 6   |
| <b>Mannschaftskabine</b>   | 1   |
| <b>Mannschaftskojen</b>    | 2   |
| <b>Innen</b>               | Teak  |
| <b>Einteilung</b>          | Private with crew                                   |
| <b>Fussboden</b>           | Teak Varnished                                      |
| <b>Offenen Cockpit</b>     | ja  |
| <b>Ruderhaus/Decksalon</b> | With full helm station and 360 view                 |
| <b>Salon</b>               | ja  |
| <b>Standhöhe Salon (m)</b> | 2,20  |
| <b>Heizung</b>             | Diesel Heißluft Espar D5 Airtonic 18.500 BTU (2015) |
| <b>Klima Anlage</b>        | Klima mit Ruckzyklus 2 x 36.000 Marine air          |



|                         |  |
|-------------------------|--|
| Navigation Zenter       | ja   |
| Achterkabine            | ja   |
| Speisezimmer            | ja   |
| Dinette                 | ja   |
| Schiebetür zum Cockpit  | Heavy Duty polished Stainless steel          |
| Kombüse                 | Alongside                                    |
| Arbeitsfläche           | Corian White                                 |
| Spülbecken              | Tripple basin                                |
| Herd                    | Gas Force 10 3 burner (2008)                 |
| Ofen                    | Force 10 (2008)                              |
| Dunstabsauge            | ja   |
| Gas-Alarm               | ja   |
| Mikrowelle              | ja   |
| Kuhlschrank             | Grunert AC and Engine driven 5 compartment   |
| Gefrier Truhe           | See fridge                                   |
| Warmwasser System       | 220V + Motor Raritan 60 Liter boiler         |
| Wasserdruck System      | elektrisch Balmar 2 state double pump system |
| Hand und/oder Fusspumpe | For fresh and salt water                     |
| Geschirrspulmaschine    | Splendide 2000                               |
| Eismaschine             | Uline 2014                                   |
| Geschirrausstattung     | ja   |
| Müllpressen             | Boran  |
| Eignerkabine            | Französisch Bett Full beam in the aft        |
| Länge Bett (m)          | 2,10   |
| Kleiderschrank          | hängend/Schublad/Regale                      |
| Badezimmer              | en suite                                     |
| Toilet                  | en suite                                     |
| Toilette System         | elektrisch                                   |
| Handwaschbecken         | im Badezimmer                                |
| Dusche                  | en suite                                     |
| Badewanne               | en suite Full size                           |
| Gästekabine 1           | Doppelbett                                   |



|                         |                                   |
|-------------------------|-----------------------------------|
| Länge Bett (m)          | 2                                 |
| Kleiderschrank          | hängend/Schublad/Regale           |
| Badezimmer              | en suite                          |
| Toilette                | en suite                          |
| Toilette System         | elektrisch                        |
| Handwaschbecken         | im Badezimmer                     |
| Dusche                  | gemeinsam                         |
| Weitere Info            | Guest cabins have a shared shower |
| Gästekabine 2           | Doppelbett                        |
| Länge Bett (m)          | 2                                 |
| Kleiderschrank          | hängend/Schublad/Regale           |
| Badezimmer              | en suite                          |
| Toilette                | en suite                          |
| Toilette System         | elektrisch                        |
| Handwaschbecken         | im Badezimmer                     |
| Dusche                  | gemeinsam                         |
| Mannschaftskabine(n)    | 1 (Used as storage now)           |
| Badezimmer (Mannschaft) | ja                                |
| Toilette (Mannschaft)   | ja                                |
| Toilette System         | handbetrieb                       |
| Handwaschbecken         | im Badezimmer                     |
| Dusche (Mannschaft)     | ja                                |
| Waschmaschine           | Splendide 2000                    |
| Weitere Info            | One fridge not operational        |

## MASCHINEN

|             |             |
|-------------|-------------|
| Motoranzahl | 1           |
| Marke       | Caterpillar |
| Typ         | 3208N       |
| PS          | 210         |
| kW          | 154,35      |



|                                   |   |
|-----------------------------------|---|
| <b>Kraftstoffart</b>              | Diesel  |
| <b>Installiert im Jahr</b>        | 2007  |
| <b>Überholung im Jahr</b>         | 2014  |
| <b>Höchstgeschwindigkeit (Kn)</b> | 10  |
| <b>Marschgeschwindigkeit (Kn)</b> | 8   |
| <b>Reichweite (nm)</b>            | 2300  |
| <b>Motorstunden</b>               | 2500  |
| <b>Kühlungssystem Motor</b>       | indirekte Wärmetauscher                           |
| <b>Antrieb</b>                    | Schraubenwelle                                    |
| <b>Motor bedienung</b>            | elektrisch & Seilzug Kabel Hynautic               |
| <b>Bugschraube</b>                | elektrisch Vetus 285 with seperate battery        |
| <b>Exhaust</b>                    | wassergekühlt                                     |
| <b>Wellen Drucklager</b>          | Aquadrive/ outhailer bearing need replacement     |
| <b>Propeller Typ</b>              | fest 24"  |
| <b>Propellerblätter</b>           | 3   |
| <b>Material Propellerwelle</b>    | Edelstahl 2"                                      |
| <b>Propellerwelle schmierung</b>  | Wasser Seal needs check/ replacement              |
| <b>Hand Bilgenpumpe</b>           | ja  |
| <b>Elektrische Bilgenpumpe</b>    | Rule 3500 with alarm                              |
| <b>Bilge Alarm</b>                | Jabsco high capacity engine driven emergency pump |
| <b>Elektrische Anlage</b>         | 12 & 24 V DC and 110 60 Hz and 240 V 50 Hz        |
| <b>Generator</b>                  | Nassauspuff Fischer Panda 14 Kva with soundbox    |
| <b>Betriebsstunden Generator</b>  | Rebuilt 2014, fuel tank need cleaning             |
| <b>Batterien</b>                  | Independent sets with cross over                  |
| <b>Starterbatterie</b>            | With paralel switch                               |
| <b>Versorgungsbatterie</b>        | 8 AGM 6 volt for 24 V (2014)                      |
| <b>Generatorbatterie</b>          | With paralel switch                               |
| <b>Bugschraubebatterie</b>        | 48 Volt   |
| <b>Batterie Monitor</b>           | ja  |
| <b>Batterie Ladegerat</b>         | Victron 24 V                                      |
| <b>Umwandler</b>                  | Outback 2500 Watt                                 |
| <b>Dioden-Batterie-Koppler</b>    | ja  |



|                       |  |
|-----------------------|--|
| <b>Landstrom</b>      | mit Kabel 50 Amp with port and starboard connection              |
| <b>Wasserbereiter</b> | HRO 900 g/d  |
| <b>Weitere Info</b>   | Dual racor filters   |
| <b>Weitere Info</b>   | Reverso oil change system for main engine, generator, and trans. |
| <b>Weitere Info</b>   | 24 V 135 Amp Alternator and 50 Amp emergency alternator          |

## NAVIGATION

|                               |  |
|-------------------------------|--|
| <b>Kompass</b>                | Danfort  |
| <b>Elektrisches Kompass</b>   | B & G  |
| <b>Tiefenanzeige</b>          | B & G Hydra 5000 dual station 2018                               |
| <b>Logge</b>                  | B & G Hydra 5000 dual station 2018                               |
| <b>Windlupe anzeige</b>       | B & G Hydra 5000 dual station 2018                               |
| <b>Tochter anzeige</b>        | B & G 2018   |
| <b>UKW</b>                    | Icom M402 and Icom ICM 423G 25W GPS integrated 2018              |
| <b>Autopilot</b>              | Simrad AP 25 (new pump 2018) & Navpilot Furuno both dual station |
| <b>GPS</b>                    | 2 x Furuno DGPS?WAAS   |
| <b>Radar/GPS</b>              | Furuno navnet dual station one Touch TZTL12F 2018                |
| <b>Navtex</b>                 | Furuno Dfax-207  |
| <b>Elektronische Kart(en)</b> | 2018 Med   |
| <b>Sender Vorrichtung</b>     | Icom M802 SSB  |
| <b>Navigation Beleuchtung</b> | LED 2014   |
| <b>Suchscheinwerfer</b>       | On radar arch  |
| <b>Weitere Info</b>           | Telephone/Intercom stations                                      |
| <b>Weitere Info</b>           | Hydraulic Pilot need refile and check on leakage                 |

## AUSRÜSTUNG

|                        |    |
|------------------------|----|
| <b>Bimini</b>          | ja |
| <b>Sonnenschirm</b>    | ja |
| <b>Cockpit Polster</b> | ja |



|                              |  |
|------------------------------|--|
| Cockpit Tisch                | ja   |
| Badeplattform                | Teak   |
| Badeleiter                   | Edelstahl New 2020 (folding)   |
| Heckdusche                   | ja   |
| Anker                        | Bruce 110 Lbs  |
| Ankerkette                   | 100 m 3/4" BBB chain   |
| Anker 2                      | CQR Pflugschar 110 Lbs   |
| Ankerkette                   | 3/4" BBB chain with rope   |
| Ankerwinde                   | elektrisch Maxwell 4000 (new motr 2015) and full service 2018          |
| Deckwasche                   | Seawater & fresh water   |
| Beiboot                      | fest Rumpf Novurania 4,1 M plus small spare inflatbale for emergencies |
| Ausserborder                 | 25 Hp Yamaha 2017 plus small one for emergency dinghy                  |
| Davits                       | TNT tender lift, needs check   |
| See Reling                   | New wires 2015 & built on BBQ  |
| Zupackenschiene (aufbauten)  | ja   |
| Seiten-Einstieg Seereling    | ja   |
| Heckkorb                     | With integrated seats  |
| Bugkorb                      | ja   |
| Rettungsinsel                | Container 1 x switilk & 1 x Avon needs check                           |
| Rettungsinsel (Pers)         | 1 x 6 & 1 x 8  |
| Letzte Wartung Rettungsinsel | 6 persens serviced 2020  |
| Schwimvesten                 | Several  |
| Sicherheits Rustung          | ja   |
| Rettungsboje                 | ja   |
| Markierboje                  | ja   |
| TV                           | 22" & 13" both with integrated DVD player                              |
| TV-Empfänger                 | Glomex   |
| Radio-CD Spieler             | Sony AM/FM/CD/MP3/Xm player  |
| Uhr - Barometer              | Wempe & Plath  |
| Feuerloscher                 | All checked 2020   |
| Automatische Löschesystem    | Halon  |



Weitere Info

Did not sail for 2 years but felt very comfortable

Weitere Info

Need some weeks "love and care" and she will be a top vessel

## RIGG

Rig

Kutter

Stehendes Gut

Drahtseil Replaced 2014, needs adjusting a bit.

Marke Mast

Rondal

Material Mast

Aluminium

Salings

3 sets of spreadres fully inspected 2014

Durchgehende Mast

ja

Großsegel

Doyle Crescent cut dacron 2014

Rollgroß Anlage

Rondal electric Hydraulic incl boom outhaul all rebuilt 2014

Fock I

Doyle Crescent Cut dacron 135% 2014

Rollreffanlage

Rondal electric hydraulic rebuilt 2014

Stagesegel

Doyle crescent Cut 2014

Stagesegel Rollreflanlage

Rondal electric hydraulic rebuilt 2014

Achterstag Spanner

hydraulik Rondal (rebuilt 2014)

Baumniederhohler

hydraulik Rondal (rebuilt 2017)

Primare Schot Winschen

(2) Barient #28 hydraulic main sheet winches serviced 2018

Sekundaire Schot Winschen

2) Barient #35 hydraulic secondary cockpit winches service 2018

Genua Schotwischen

(2) Barient hydraulic primary winches in cockpit serviced 2018

Fall Winschen

2) Barient #28 manual winches on mast fully serviced 2018

Multifunktional Winschen

Fall/Schot wischen 4) Barient #28 manual winches in cockpit and mast serviced 2018

Weitere Info

Running rigging replaced 2014

Weitere Info

Hdropack winches/furlers needs check, sweating on some points





BROKERAGE | CHARTER | BERTHS | FINANCE | INSURANCE | YACHT MANAGEMENT

**DE VALK**  
YACHT BROKERS



This yacht will be auctioned,  
for further details please visit [www.devalk.nl](http://www.devalk.nl)

Dit schip zal worden geveild,  
voor meer informatie gaat u naar [www.devalk.nl](http://www.devalk.nl)

Dieses Schiff wird versteigert,  
für weitere informationen besuchen Sie [www.devalk.nl](http://www.devalk.nl)

Este barco será subastado,  
para obtener más información, visite [www.devalk.nl](http://www.devalk.nl)

[WWW.DEVALK.NL](http://WWW.DEVALK.NL)

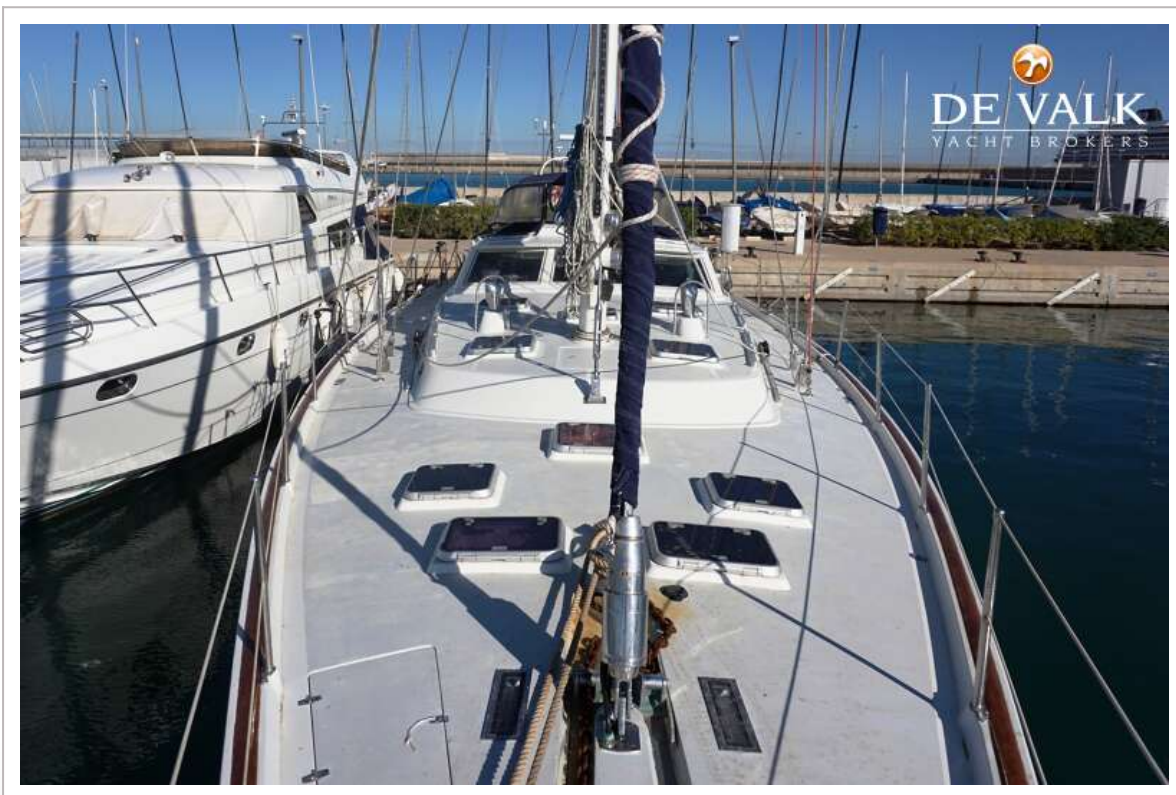
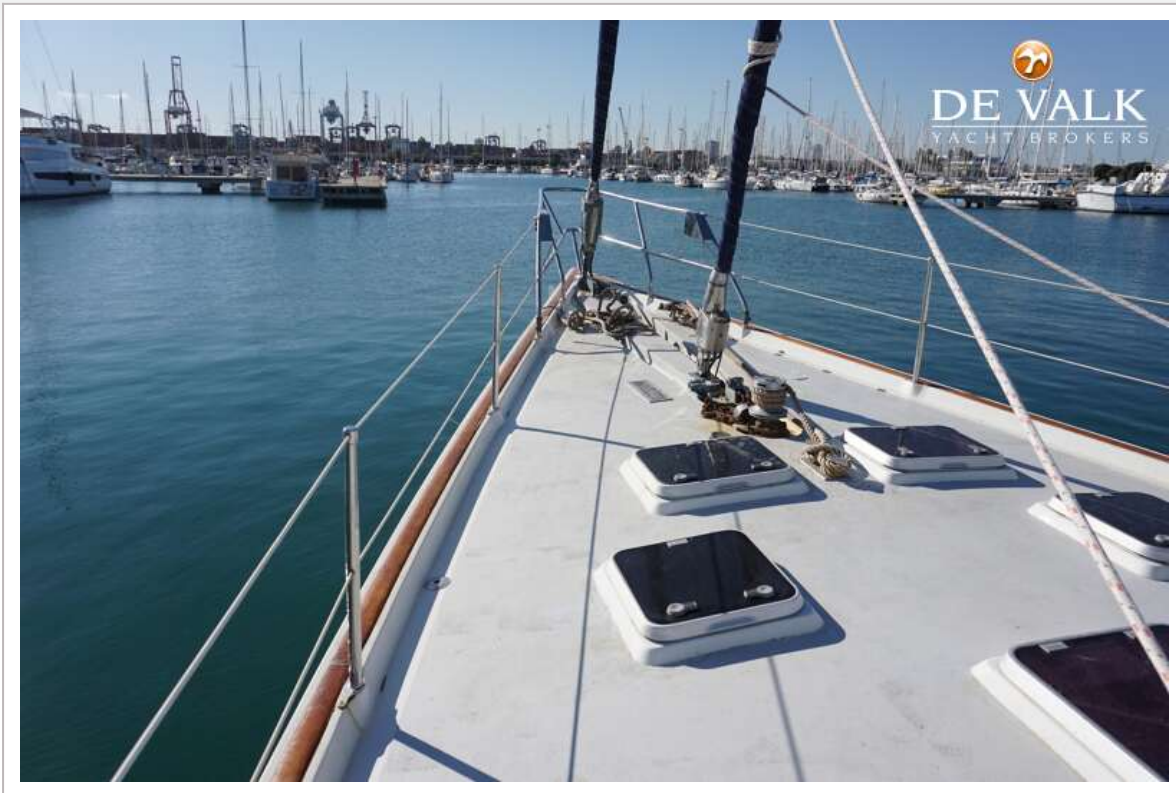
**DE VALK**  
YACHT BROKERS



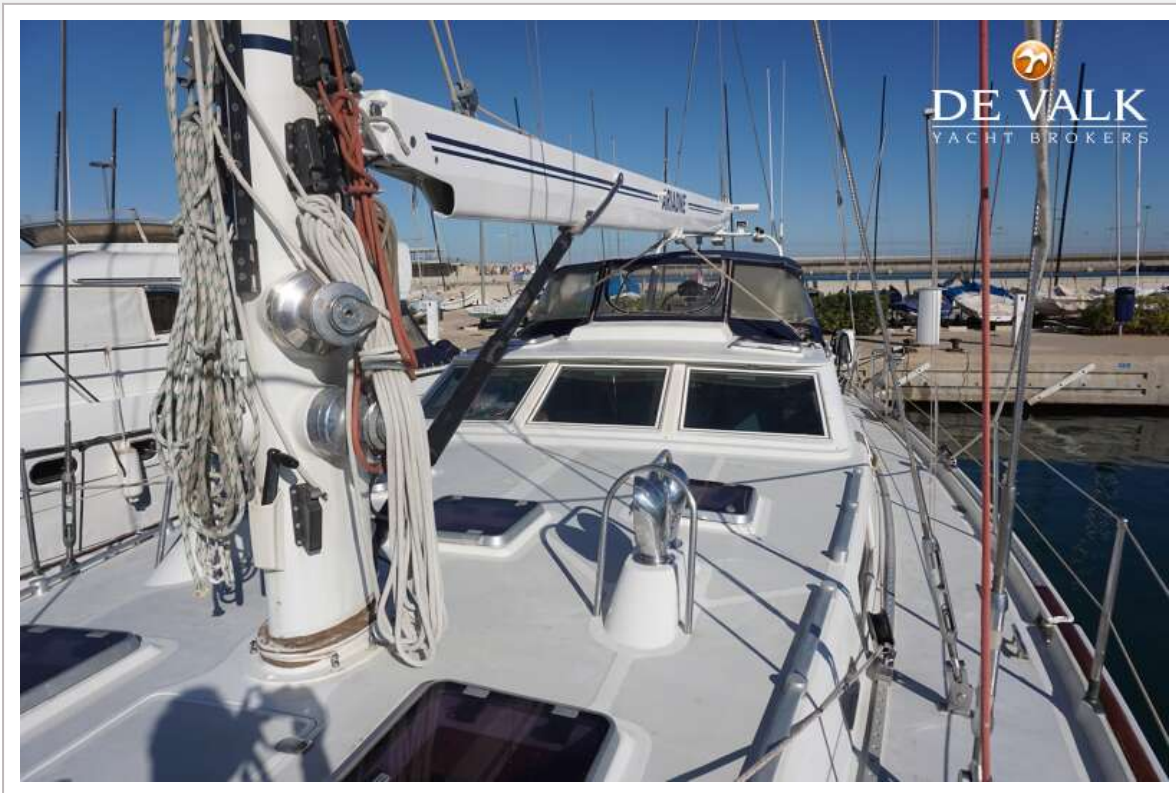




# FINYA 75

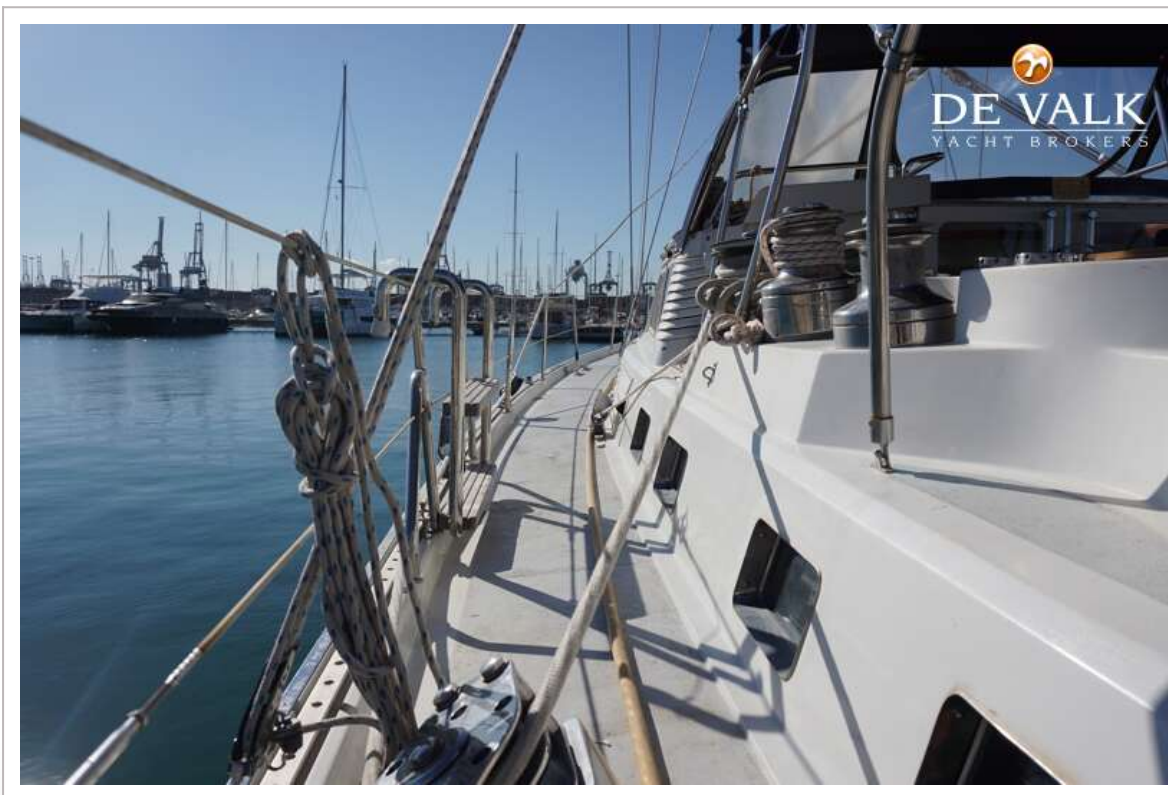


# FINYA 75

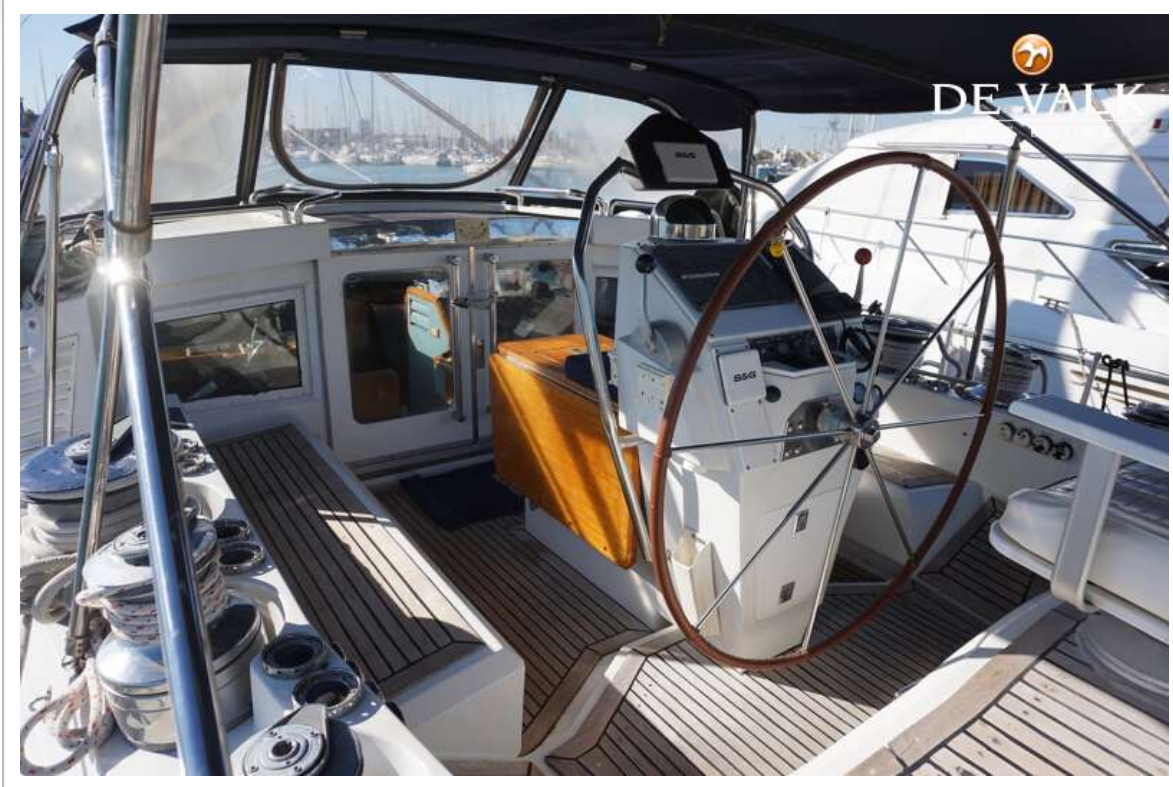


# FINYA 75

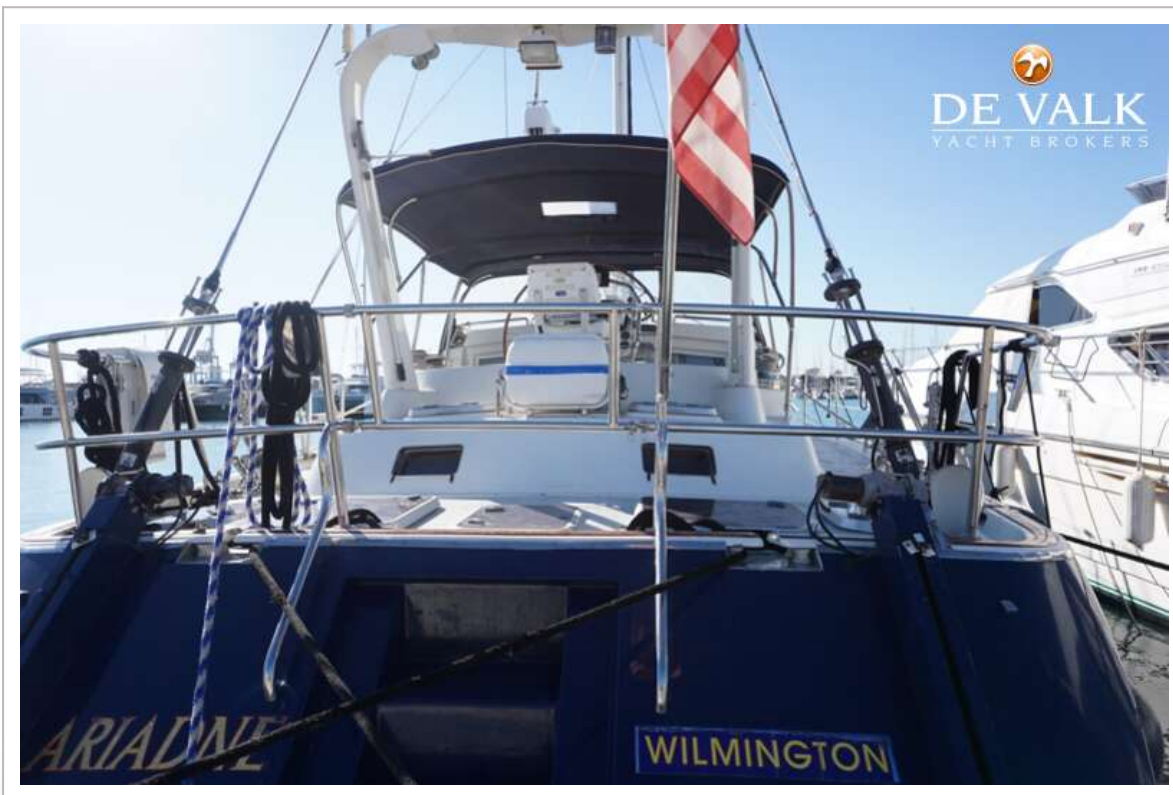




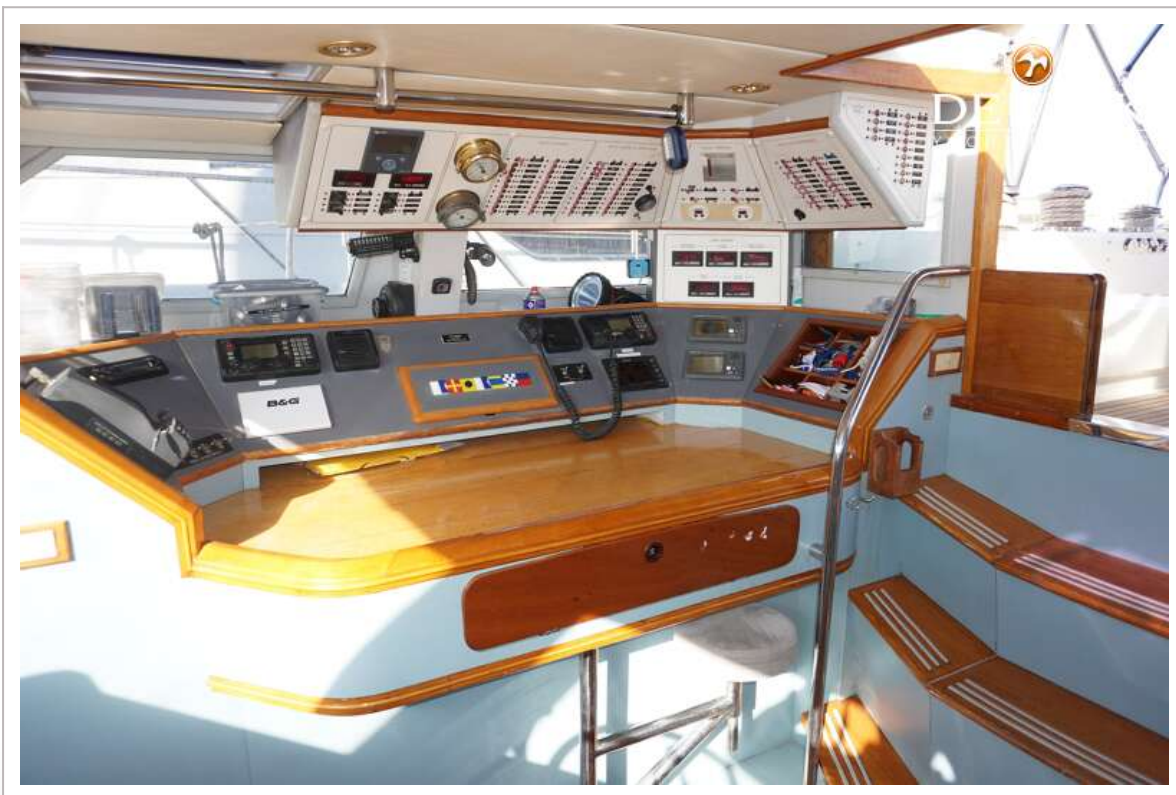
# FINYA 75



# FINYA 75







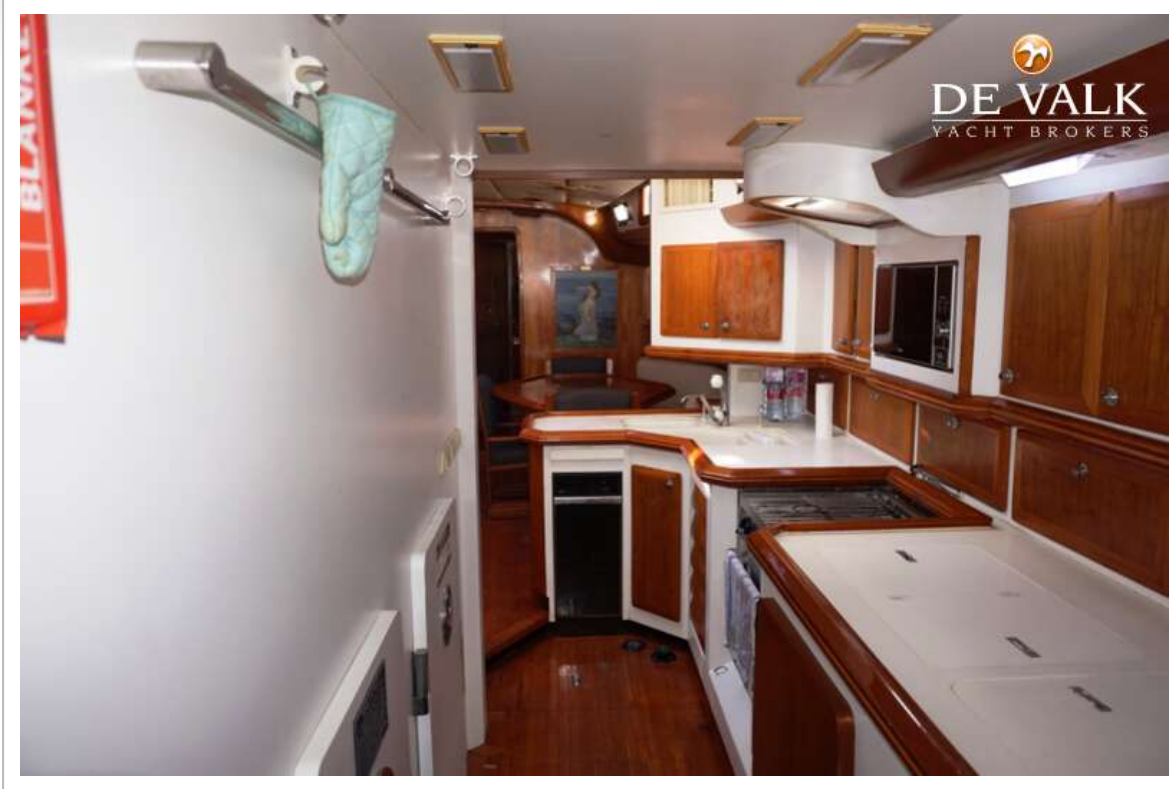
# FINYA 75



# FINYA 75

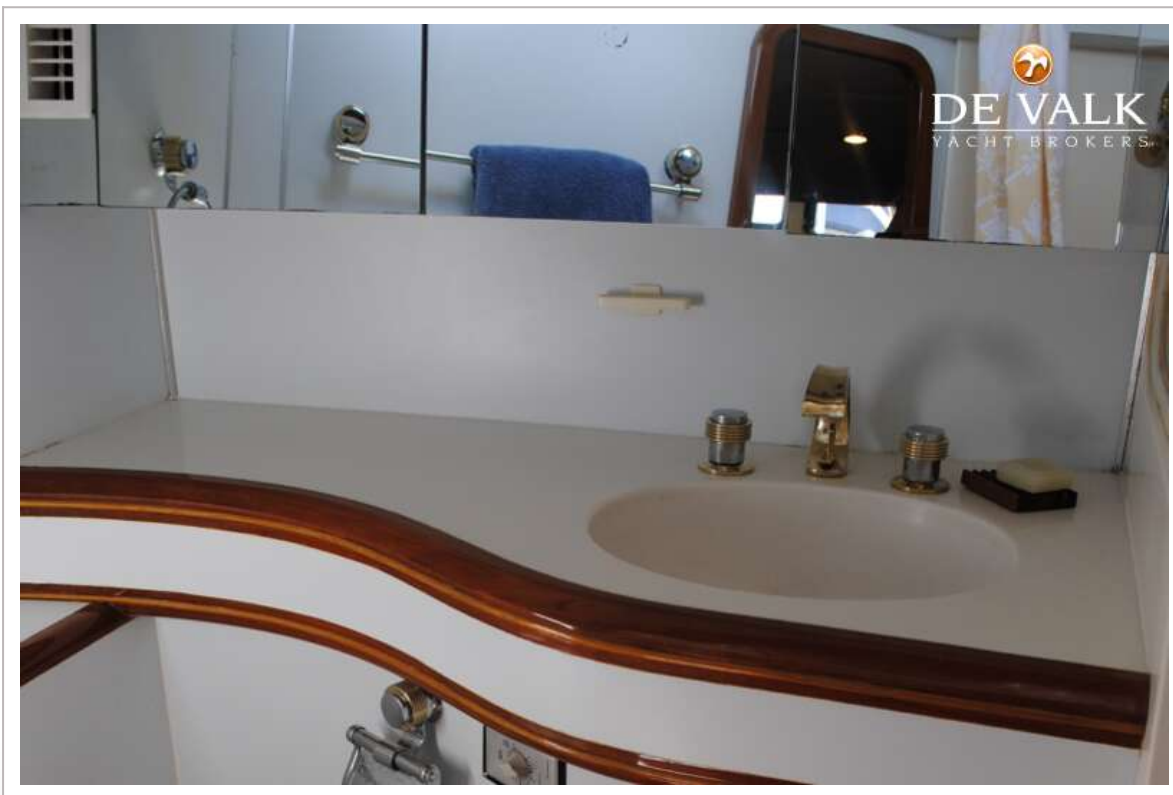
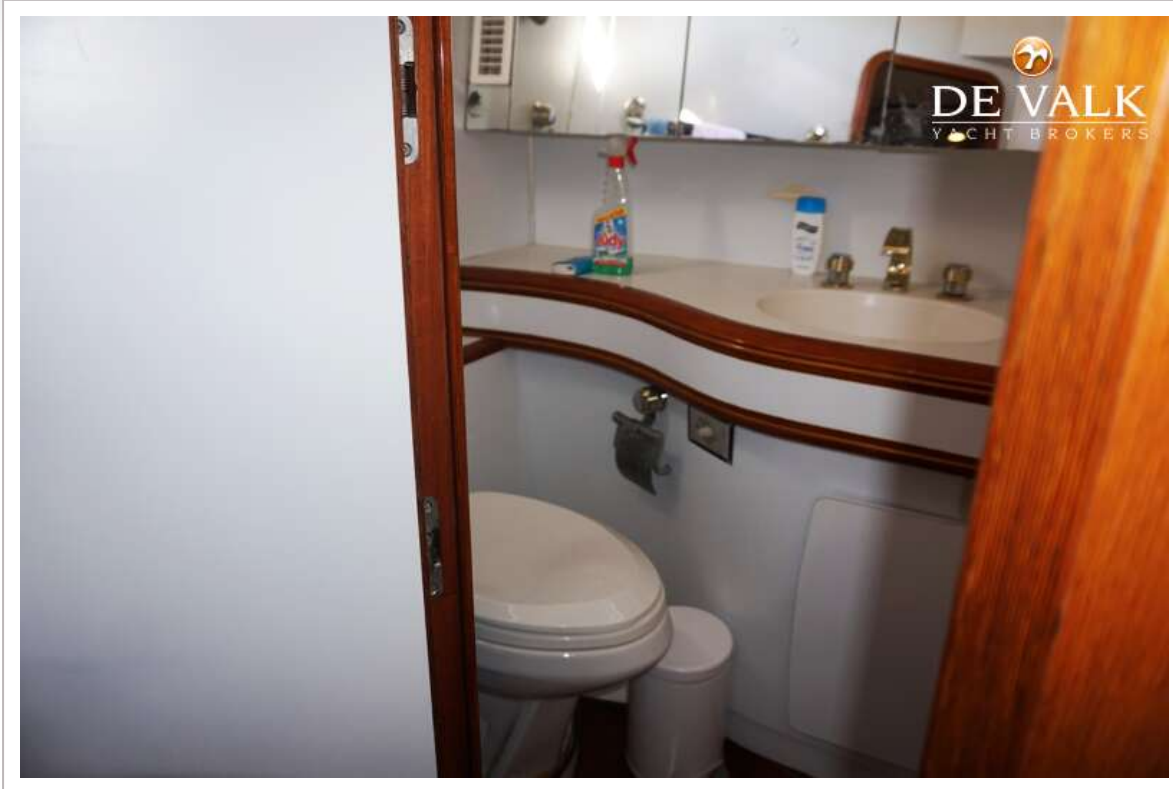


# FINYA 75



# FINYA 75





# FINYA 75



# FINYA 75

