



DE VALK  
YACHT BROKERS



## BOARNCRUISER 40 CLASSIC LINE



DE VALK  
YACHT BROKERS

# BOARNCRUISER 40 CLASSIC LINE

## KOMMENTARE DES MAKLERS

This Boarncruiser Classic Line is the only 40 Classic Line currently on the market, completely equipped for long journeys and live aboard. The yacht is very well maintained and appears like new. With its bow- and stern thrusters very easy to operate, even single handed. Low engine hours. Large aft deck with 2 helmsman chairs, U-shaped bench with plenty of storage space underneath. Spacious, comfortable master cabin. Many options and upgrades over standard specification. The bright saloon with its large, tinted windows provides a magnificent, all around view.

*Pieter Bosma*

## TECHNISCHE DATEN

<b>Maße</b>	12.40 x 4.35 x 1.10 (m)	<b>Werft</b>	De Boarnstream
<b>Baujahr</b>	2011	<b>Kabinen</b>	2
<b>Material</b>	Stahl	<b>Kojen</b>	4
<b>Motor(en)</b>	1 x Perkins Sabre M 150 Ti diesel	<b>PS/kW</b>	150.00 (PS), 110.25 (kW)
<b>Verkaufspreis</b>	verkauft (MwSt. )	<b>Liegeplatz</b>	beim Verkaufsbüro

## KONTAKT

<b>Verkaufsbüro</b>	De Valk Sneek	<b>Telefon</b>	+31 515 42 80 30
<b>Adresse</b>	Zwolsmanweg 7 8606 KC Sneek The Netherlands	<b>E-Mail</b>	sneek@devalk.nl

## HAFTUNGSAUSSCHLUSS

Diese Angaben erfolgen nach bestem Wissen, können jedoch nicht garantiert werden.



# BOARNCRUISER 40 CLASSIC LINE

## ALLGEMEIN

<b>Modell</b>	BOARNCRUISER 40 CLASSIC LINE
<b>Typ</b>	Motoryacht
<b>Rumpflänge (m)</b>	12,40
<b>Breite (m)</b>	4,35
<b>Tiefgang (m)</b>	1,10
<b>Durchfahrtshöhe (m)</b>	3,66
<b>Durchfahrtshöhe min (m)</b>	2,70
<b>Stehhöhe (m)</b>	1,95
<b>Baujahr</b>	2011
<b>Werft</b>	De Boarnstream
<b>Land</b>	Niederlande
<b>Entwerfer</b>	Hokwerda
<b>Gewicht (t)</b>	17
<b>CE Norm</b>	B
<b>Rumpfmateriäl</b>	Stahl
<b>Rumpffarbe</b>	Weiß Oyster
<b>Haut-dicke Rumpf (mm)</b>	4/5 mm
<b>Rumpfform</b>	Multi Knikspant
<b>Art Kiel</b>	Langkieler
<b>Material Aufbauten</b>	GFK
<b>Stossliste</b>	Kabelaring
<b>Deckmaterial</b>	Stahl
<b>Deck Finish</b>	Non-slip FLEXITEEK
<b>Antifouling (Jahr)</b>	2020
<b>Dorado Belufter</b>	2
<b>Fenster Material</b>	Doppelverglasung Tinted Thermic Line with sun reflection
<b>Decksluke</b>	With insect screen and shades
<b>Bullauge</b>	With insect screen and rain covers
<b>Isolation</b>	Throughout vessel
<b>Mast legbar</b>	Electrically with remote control from cockpit



# BOARNCRUISER 40 CLASSIC LINE

<b>Treibstofftank (Liter)</b>	Stahl 800 ltr
<b>Füllstandsanzeige (Treibstofftank)</b>	On dashboard
<b>Trinkwassertank (Liter)</b>	Edelstahl 600 ltr
<b>Füllstandsanzeige (Trinkwasser)</b>	On dashboard
<b>Fäkaelien Tank (Liter)</b>	Edelstahl 250 ltr
<b>Füllstandsanzeige (Fakaelientank)</b>	On dashboard
<b>Radsteuerung</b>	hydraulik
<b>Aussen Steuerung</b>	With two pilot chairs
<b>Weitere Info Farbe und Anstrich</b>	Polished and waxed 2020
<b>Weitere Info</b>	Airdraft 2,70 with windows down
<b>Weitere Info</b>	Aidraft 3,66 with bimini up
<b>Weitere Info</b>	Large skylight over saloon with insect screen and shade

## UNTERKUNFT

<b>Kabinen</b>	2
<b>Kojen</b>	4
<b>Innen</b>	Kirsche
<b>Fussboden</b>	Carpet, Holly and Teak
<b>Achterdeck</b>	Large outside space, full canvas enclosure
<b>Salon</b>	U-shape sofa, drawers + lots of storage underneith
<b>Standhöhe Salon (m)</b>	1,95
<b>Heizung</b>	wasserheizung Maritime Booster
<b>Dinette</b>	Dining table, seating for 4
<b>Tür zum Cockpit</b>	Solid, reinforced teak
<b>Kombüse</b>	Completely equipped, disches, glasses, cutlery etc.
<b>Arbeitsfläche</b>	Corian
<b>Spülbecken</b>	With 2 basins
<b>Herd</b>	keramisch 4 burner stove
<b>Dunstabsauge</b>	ja
<b>Mikrowelle/Backofen Kombi</b>	Samsung (new 2021)
<b>Kuhlschrank</b>	Waeco 110Ltr with freezing compartment



# BOARNCRUISER 40 CLASSIC LINE

Warmwasser System	uber Heizung
Wasserdruck System	elektrisch
Eignerkabine	Französisch Bett
Länge Bett (m)	2,00
Kleiderschrank	hängend/Schublad/Regale Added more storage capacity
Badezimmer	en suite
Toilet	en suite
Toilette System	elektrisch Fresh water flush
Handwaschbecken	im Badezimmer
Dusche	en suite Seperate
Gästekabine 1	V-Bett
Länge Bett (m)	2,00
Kleiderschrank	hängend und Schubladen
Badezimmer	en suite
Toilette	en suite
Toilette System	elektrisch
Handwaschbecken	im Badezimmer
Waschmaschine	ja

## MASCHINEN

Motoranzahl	1
Marke	Perkins Sabre
Typ	M 150 Ti
PS	150
kW	110,25
Kraftstoffart	Diesel
Installiert im Jahr	2011
Höchstgeschwindigkeit (Kn)	10
Marschgeschwindigkeit (Kn)	8
Verbrauch (l/h)	5
Motorstunden	757



# BOARNCRUISER 40 CLASSIC LINE

<b>Antrieb</b>	Schraubenwelle
<b>Gewinde getriebe</b>	ZF45A
<b>Bugschraube</b>	elektrisch 95 KGF
<b>Heckschraube</b>	elektrisch 95KGF
<b>Wellen Drucklager</b>	Python Drive (replaced 2019)
<b>Propeller Typ</b>	fest
<b>Propellerblätter</b>	4
<b>Material Propellerwelle</b>	Edelstahl
<b>Propellerwelle schmierung</b>	Wasser
<b>Elektrische Anlage</b>	12/220V
<b>Generator</b>	Mastervolt Whisper 6 3000 rpm
<b>Betriebsstunden Generator</b>	65
<b>Batterien</b>	Service free (all replaced for new 2019)
<b>Starterbatterie</b>	1x
<b>Versorgungsbatterie</b>	3x 143 amp (2019)
<b>Generatorbatterie</b>	2019
<b>Batterie Ladegerät</b>	Mastervolt
<b>Umwandler</b>	Mastervolt 2500W
<b>Dioden-Batterie-Koppler</b>	ja
<b>Landstrom</b>	mit Kabel

## NAVIGATION

<b>Elektrisches Kompass</b>	Raymarine ST70
<b>Tiefenanziege</b>	Raymarine ST70
<b>Logge</b>	Raymarine ST70
<b>UKW</b>	Icom
<b>Autopilot</b>	Raymarine with wireless remote control
<b>Ruderwinkel Anzeige</b>	In Autopilot
<b>Radar</b>	Raymarine scanner
<b>GPS</b>	ja
<b>Radar/Plotter</b>	Raymarine C90



Navigation Beleuchtung	ja
Weitere Info	ja

## AUSRÜSTUNG

Kuchenbude	Full cockpit enclosure, large windows
Bimini	Integrated with sprayhood
Cockpit Polster	Covering entire seating area
Cockpit Tisch	Vertically adjusted, varnished, new protective cover
Badeplattform	Inlaid with teak grating, folding swim ladder
Badeleiter	Edelstahl
Heckdusche	Warm and cold fresh water
Anker	Stainless Steel 35 Kg
Ankerkette	30 M 8 mm
Ankerwinde	elektrisch Lofrans 1000 W, wireless remote control
Deckwasche	ja
Beiboot	Lonestar 3
Ausserborder	YAMAHA 2.5 Hp (new)
Davits	Edelstahl 150 kg
Davits bedienung	elektrisch
See Reling	Heavy duty SS railing
Zupackenschiene (aufbauten)	ja
Seiten-Einstieg Seereling	Plus stern gate with teak ladder
Rettungsinsel	Next survey 2022
Rettungsinsel (Pers)	4
Horn	elektrisch
Fenderkissen	10 x incl. large ball fenders
Festmacher	8 x, 6 x e x t r a long
TV	Flat Screen on lift
Satellit	OysterSAT Dome 50 (new 2020)
Radio-CD Spieler	JVC
Lautsprecher im Salon	ja



**Feuerloscher**

Automatic eco-friendly extinguisher in engine room

**Weitere Info**

10 x heavy duty SS bollards

**Weitere Info**

4 deep cockpit lockers with lots of storage space

**Weitere Info**

ja





# BOARNCRUISER 40 CLASSIC LINE



# BOARNCRUISER 40 CLASSIC LINE



# BOARNCRUISER 40 CLASSIC LINE



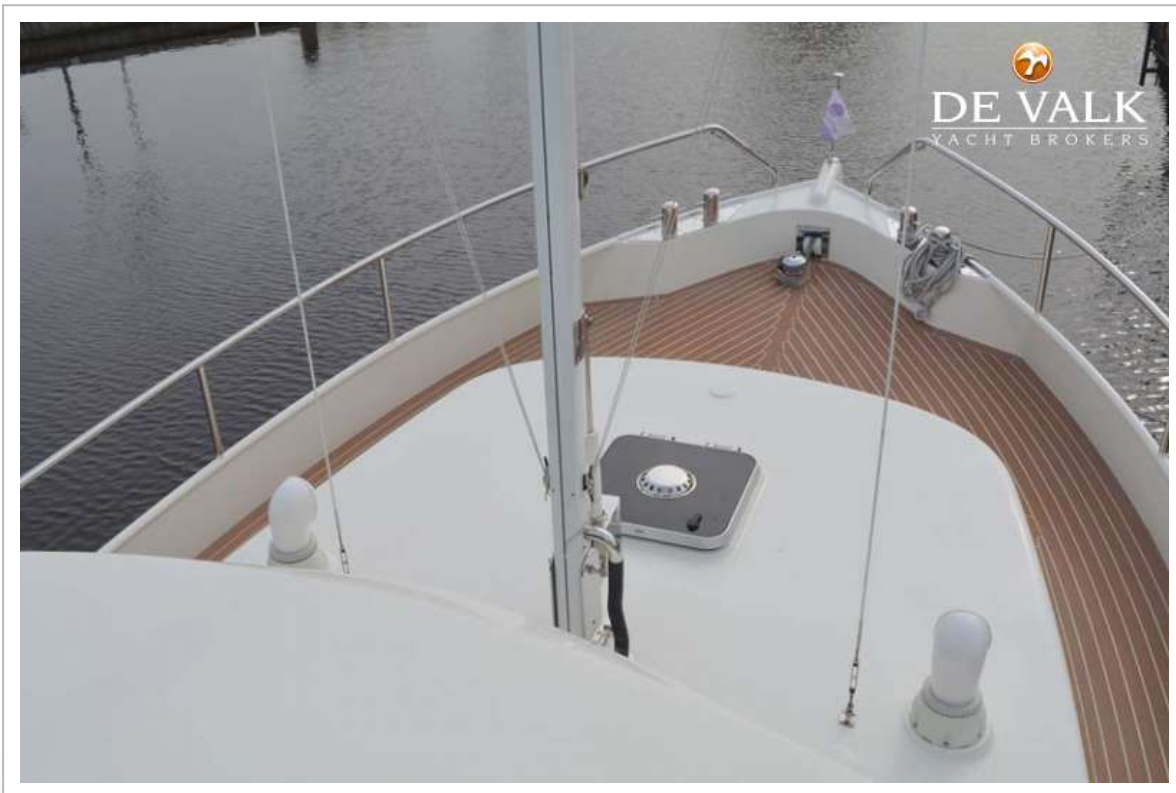
# BOARNCRUISER 40 CLASSIC LINE



# BOARNCRUISER 40 CLASSIC LINE



# BOARNCRUISER 40 CLASSIC LINE



# BOARNCRUISER 40 CLASSIC LINE

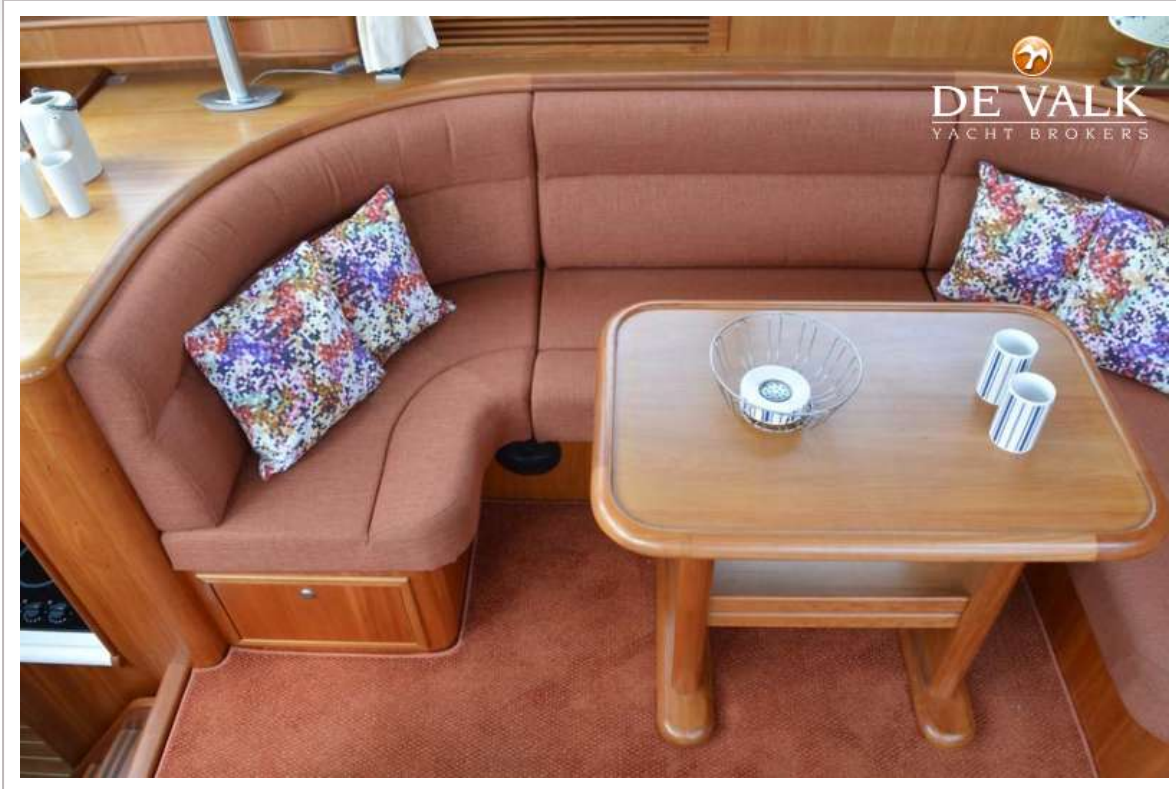


# BOARNCRUISER 40 CLASSIC LINE

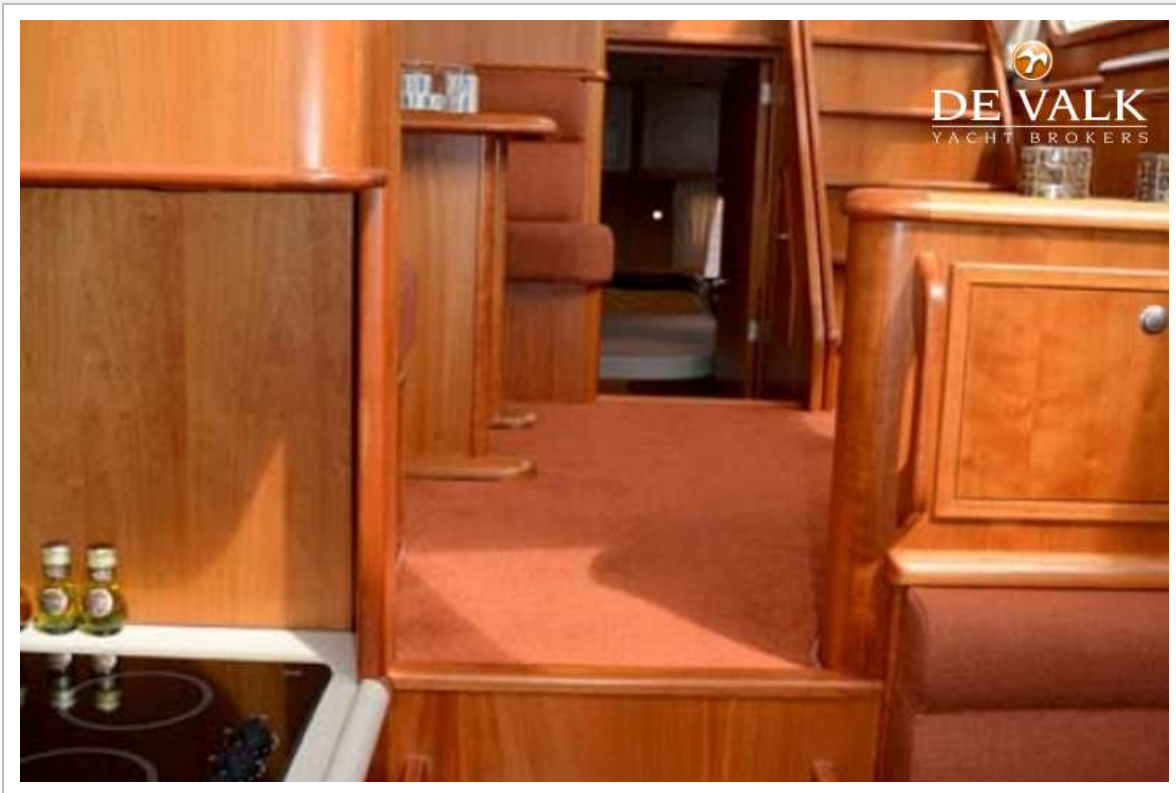




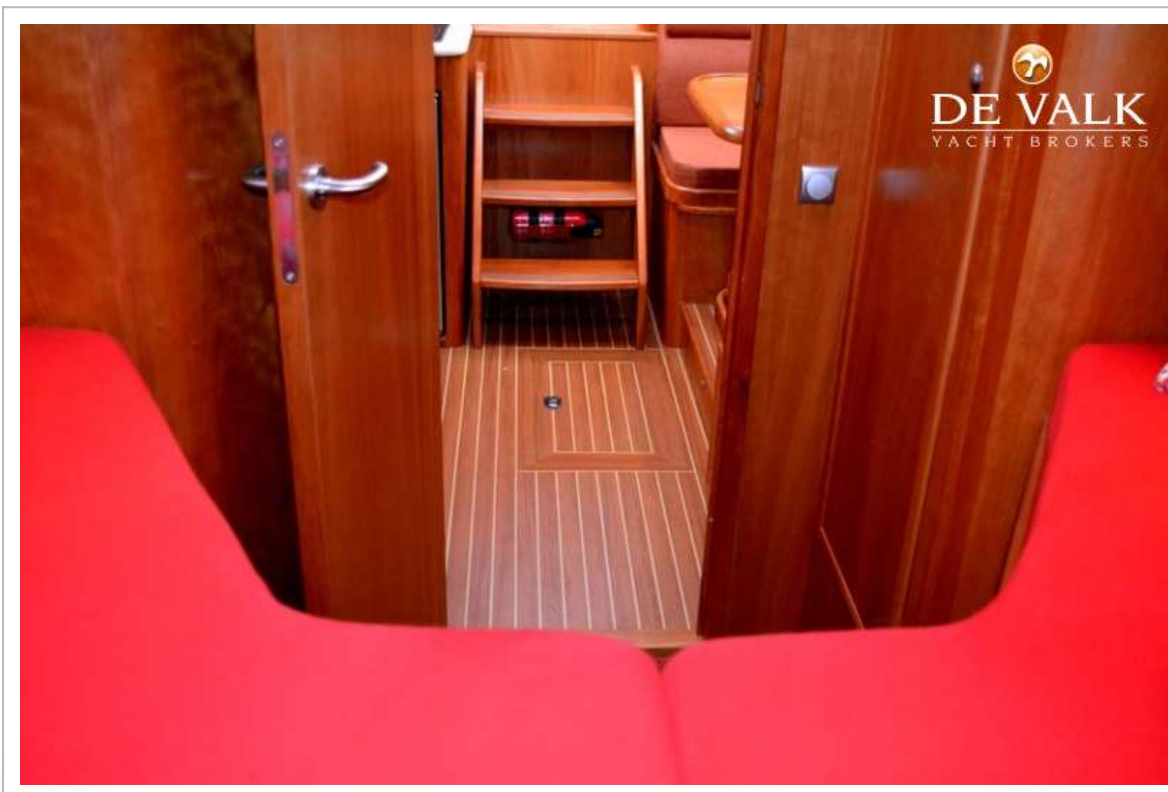
# BOARNCRUISER 40 CLASSIC LINE



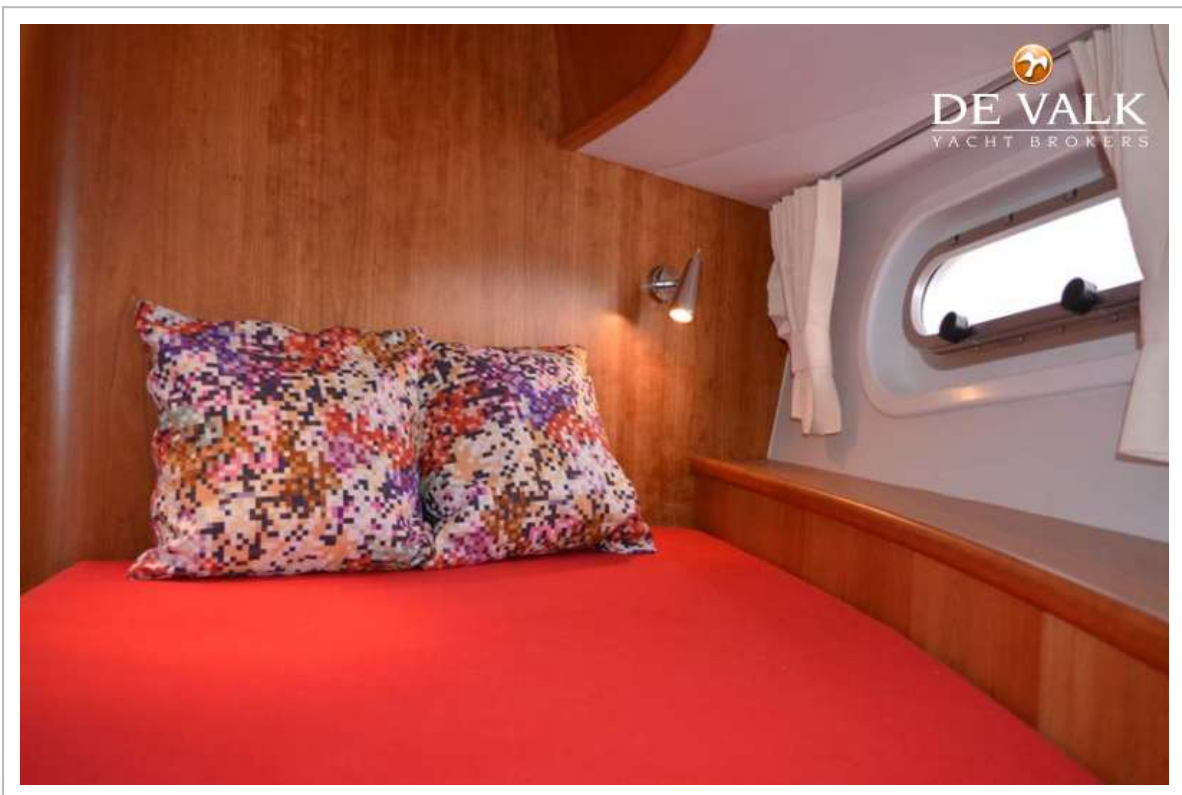
# BOARNCRUISER 40 CLASSIC LINE



# BOARNCRUISER 40 CLASSIC LINE



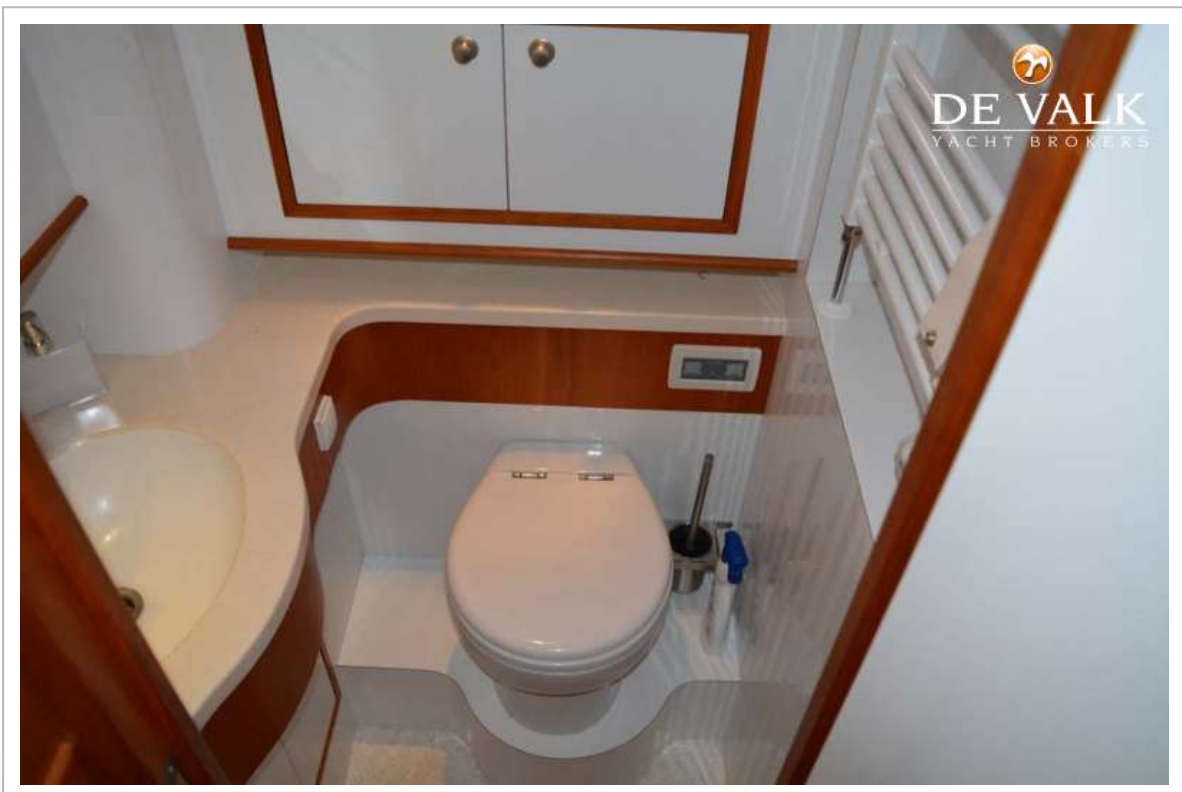
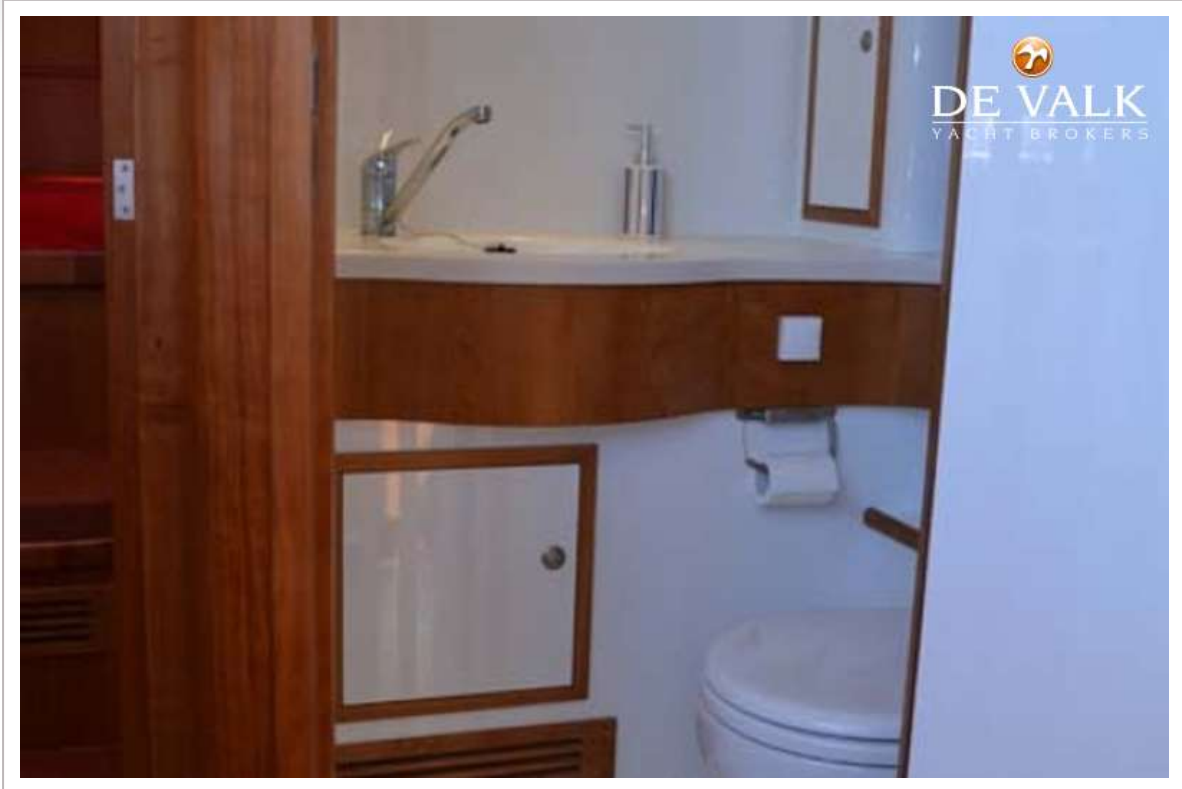
# BOARNCRUISER 40 CLASSIC LINE



# BOARNCRUISER 40 CLASSIC LINE



# BOARNCRUISER 40 CLASSIC LINE



# BOARNCRUISER 40 CLASSIC LINE



# BOARNCRUISER 40 CLASSIC LINE

