



DE VALK
YACHT BROKERS



HANSE 540E



DE VALK
YACHT BROKERS

HANSE 540E

BROKER'S COMMENTS

"Very modern and sportive cruising yacht with very luxurious accommodations to stay aboard in all comfort. Easy to sail due to her self tacking jib and up-to-date rigging. Wel maintained and sharp priced!New price around EUR630.000,-!"

SPEZIFIKATIONEN

Maße	16,08 x 4,91 x 2,80 (m)	Baumeister	HANSE YACHTS
Baujahr	2008	Kabinen	3
Material	Epoxy und Schaumkern	Schlafplätze	6
Motor(en)	1 x YANMAR 4JHA-HTBE diesel	Pk/Kw	110 (pk), 80,85 (kw)
	VERKAUFT	Liegeplatz	not at sales office

KONTAKT

Geschäftsstelle	De Valk Loosdrecht	Telefon.	+31 35 582 90 30
Adresse	't Breukeleveense Meentje 6	Fax	+31 (0)35 582 90 39
	1231 LM Loosdrecht / Wijdmeren	E-Mail -Adresse	loosdrecht@devalk.nl
	The Netherlands		

DISCLAIMER

Obwohl wir uns der Richtigkeit, Vollständigkeit und Aktualität unserer Informationen größte Sorgfalt widmen, können aus den Informationen keine Rechtsansprüche abgeleitet werden.



GENERAL

Type, Hanse 540E,
Built in 2008,
Yard, Hanse Yachts Germany,
Dimensions, 16,08 x 4,91 x 2,80 m.,
CE-Class A Certification
Designer, Judel / Vrolijk & co - HanseYachts Design,
Overall height, approx. 26,50 m.,
Hull material, Epoxy built hull with prepreg fiberglass fabrics, vacuum bagged with Corecell foam,
Deck material, handlayered sandwich construction, thermal and sound insulated,
Superstructure material, Epoxy and foam,
Hull, gelcoat coloured hull with white waterline, roundbilged,
Keel, finkeel with bulb, standard composite iron/lead keel,
Displacement, approx. 18,7 t.,
Ballast, 5,8 t.,
Fueltank: 375 litres (stainless steel),
Watertanks: 710 litres (stainless steel),
Holdingtanks: stainless steel with sea- and deck discharge,
Jafa mechanical wheelsteering with twin carbon fibre steeringwheels, emergency tiller.

UNTERKUNFT

Interior style, spacious saloon with L-shaped sofa and large galley,
3 cabins with 6 berths,
Headroom, approx. 2,05 metres,
3 bathrooms with electric Tecma toilets and showers,
Special latex mattresses with slatted mattress support,
Airconditioning in cabins,
Galley double sinks in black Korean worktops,
Techimpex stainless three burner gasstove with oven,
Isotherm large toploading 130 litres 12V fridge,
Isotherm frontloading 80 litres 12V freezer,
Sharp 220V microwave,
Electric waterpressure system,
Hot water via boiler (220V/engine).

MOTOR(EN)

Engine, Yanmar 4JHA-HTBE 110 hp diesel engine,
Built, 2008,
Engine hours, approx. 560,
Cooling system, via heat exchanger,
Fuel consumption, approx. 6 litres/hour,
Drive, stainless steel shaft drive with 3-bladed propellor,
Speed, cruising speed approx. 7,5 knots,
Max Power 12V/7,9 KW retractable bowthruster,
Batteries, 1 x startbattery 85 Ah, 1 x servicebattery 310 Ah, 4 x service batteries 85 Ah,



Battery charger, 2 x 50A/12V,
Generator, 6kW, approx. 240 hours.
2x shore power with cable,
Inverter 12V/220V.

NAVIGATION

Simrad IS20 with 2 displays for windset, LOG and echosounder,
Simrad RS82 VHF with Atis/DSC and cockpit connection,
Simrad WR20 Remote Controller,
Simrad AP 24 autopilot,
Simrad GB40 color chartplotter and gps (with extra screen in cockpit),
Simrad AIS AI 50,
Simrad Radar,
Navtex weather receiver,
Fluxgate RFC35 compass.

AUSRÜSTUNG

Teak in cabin and on decks,
Delta 25kg anchor with 60 m, chain
54 AEST electrical halyard winch,
Electro-hydraulic transom opener incl. remote control,
6 Retractable mooring cleats,
Bimini-top,
TV + DVD in saloon,
TV in mastercabin,
Hot & cold shower on aft deck,
Flush retractable anchor davit with anchor roller and spring lifting for storage inside the locker,
Watermaker,
Sattelite TV,
Liferaft.

TAKELWERK

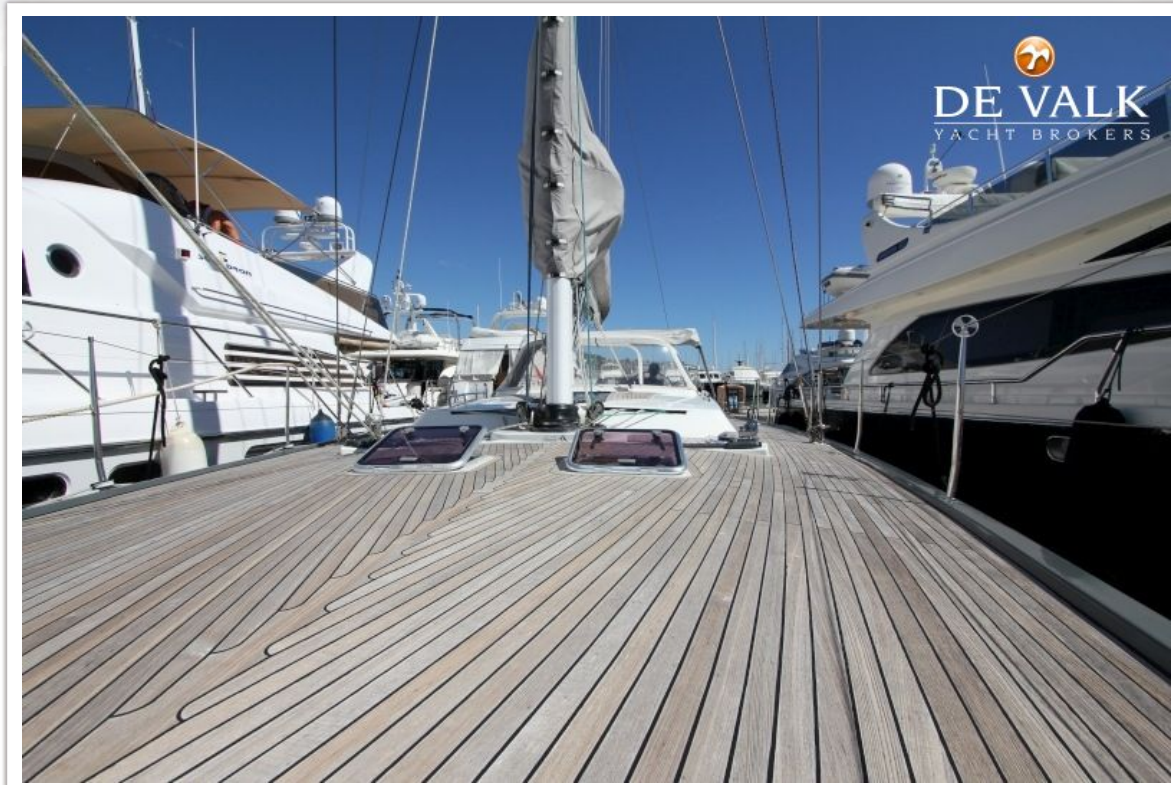
Material mast, aluminium with stainless steel rigging with rod kicker,
Roll Genoa North Sails 3DL Marathon,
Code 0 North Sails,
Mainsail North Sails 3DL Marathon Full Button,
Harken Switch System on the mast,
Self tacking jib with furling system,
Backstay adjuster,
Mandrop system with Lazy Jacks.



HANSE 540E



HANSE 540E



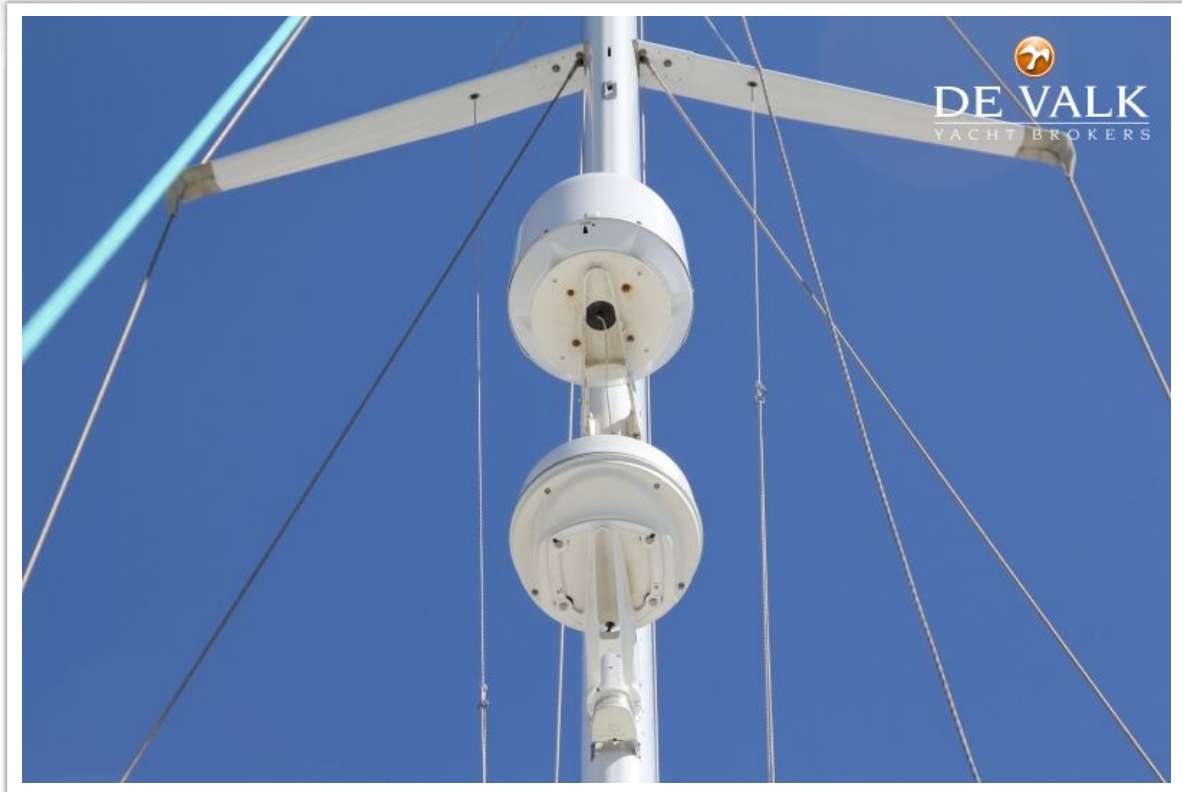
HANSE 540E



HANSE 540E



HANSE 540E



HANSE 540E



HANSE 540E



HANSE 540E



HANSE 540E



HANSE 540E



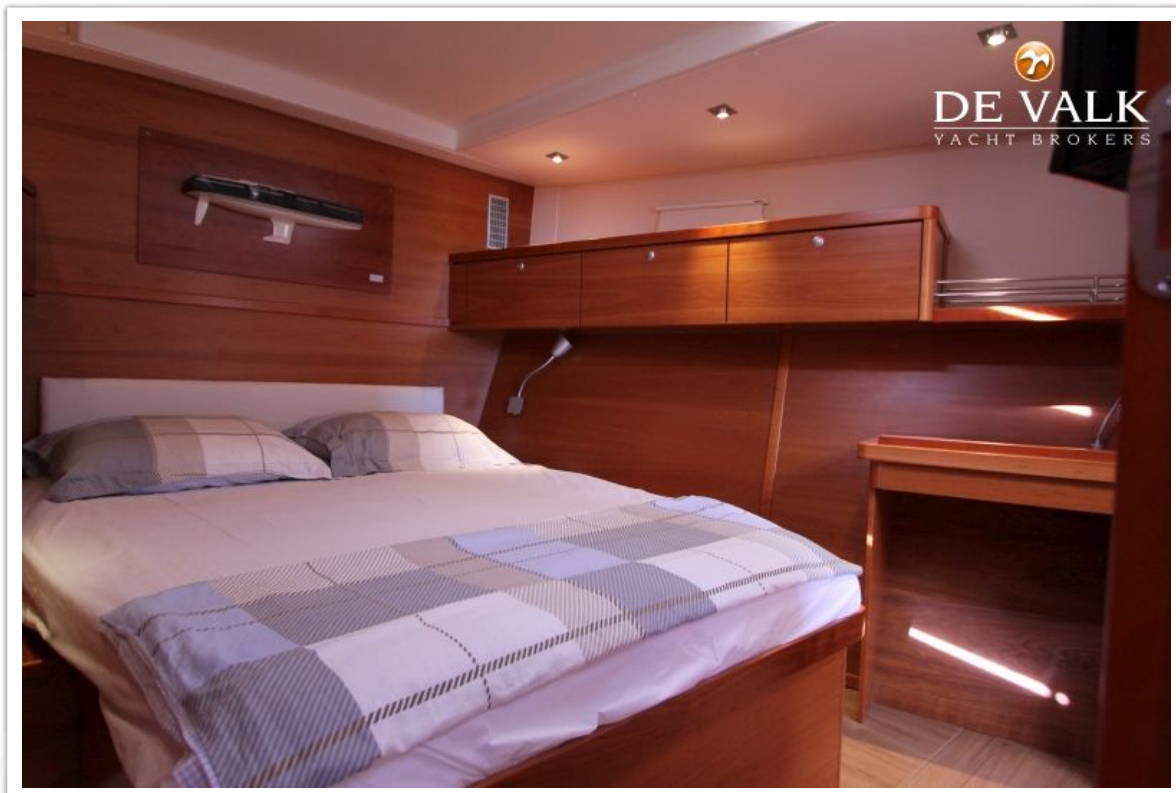
HANSE 540E



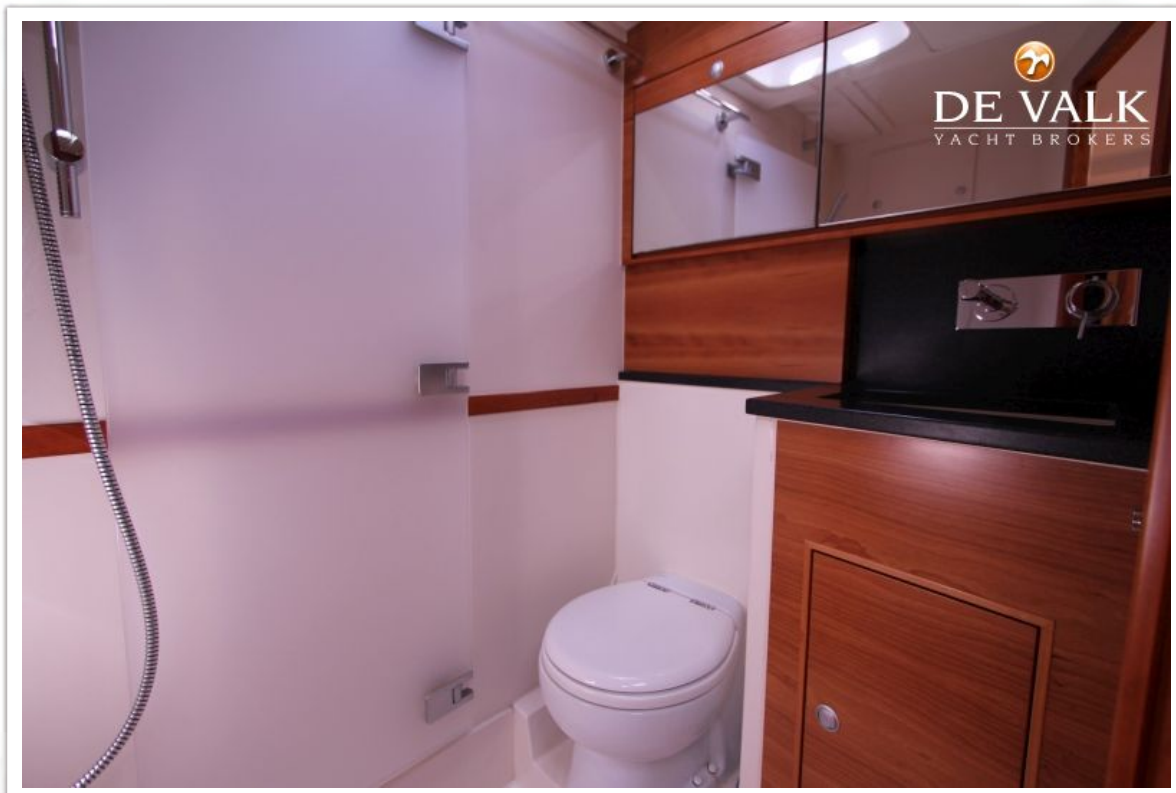
HANSE 540E



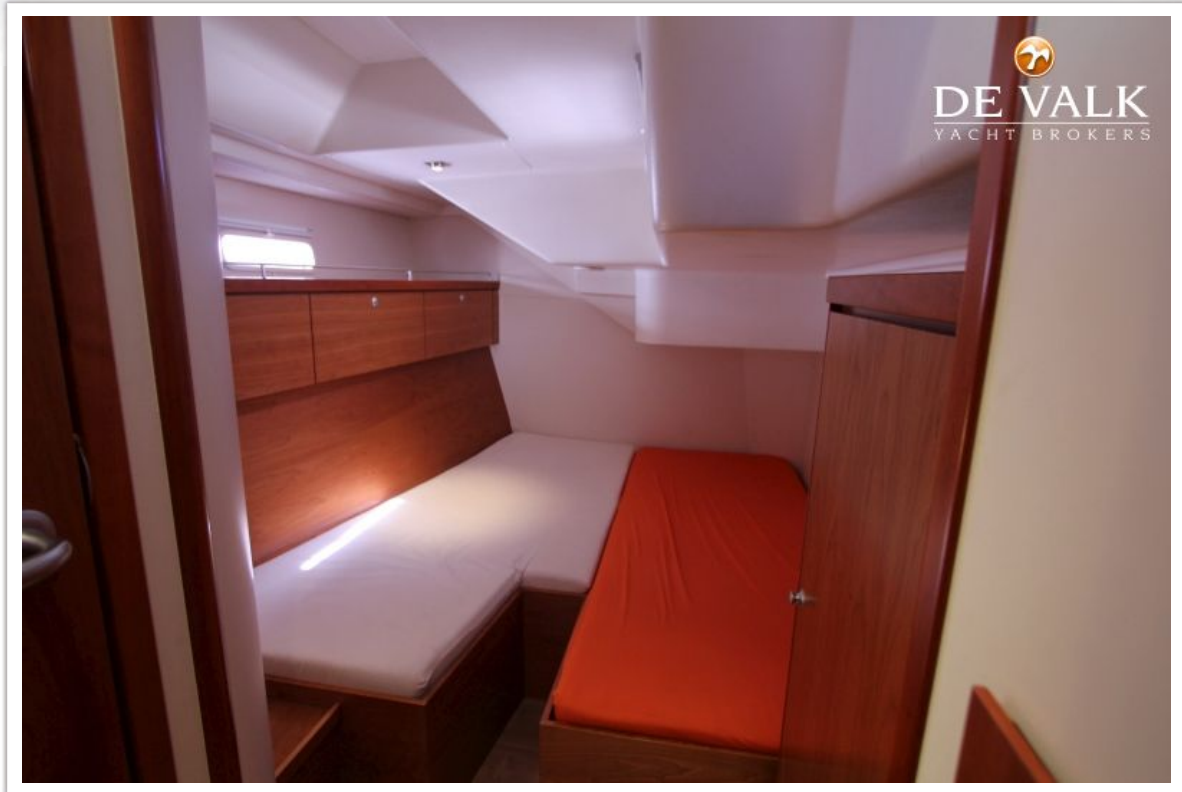
HANSE 540E



HANSE 540E



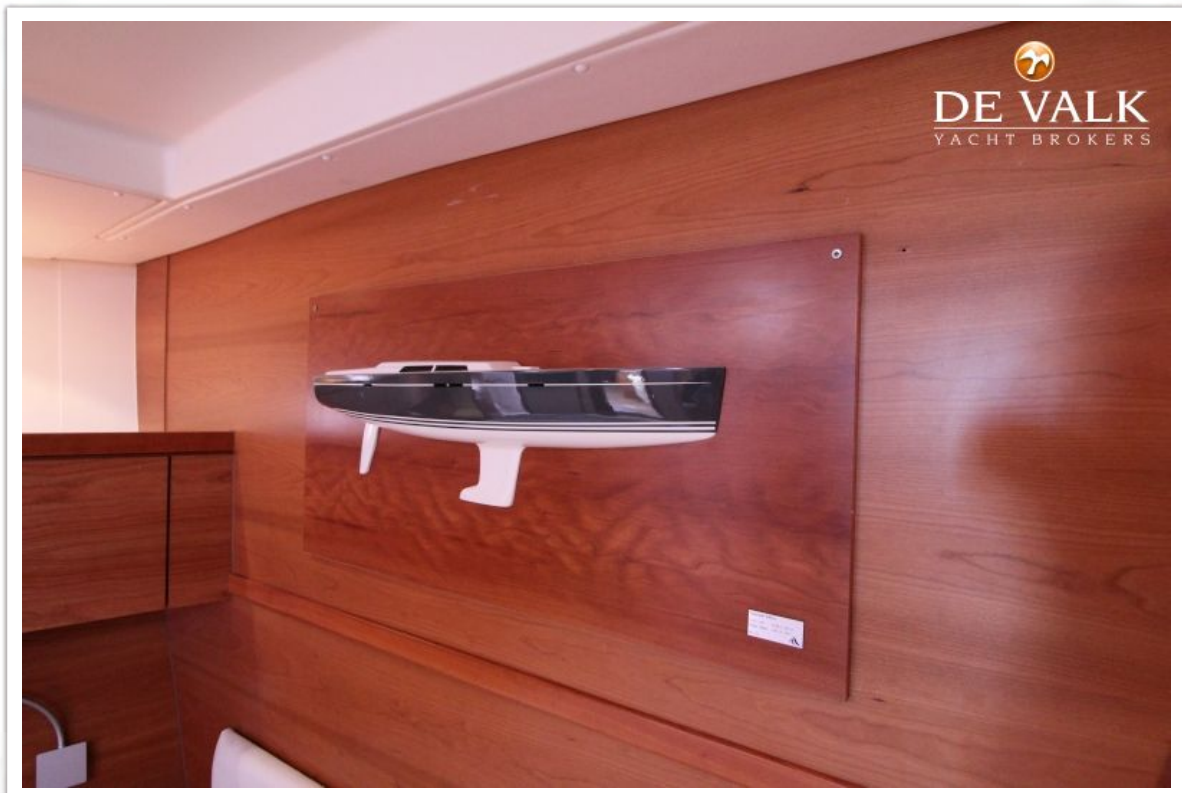
HANSE 540E



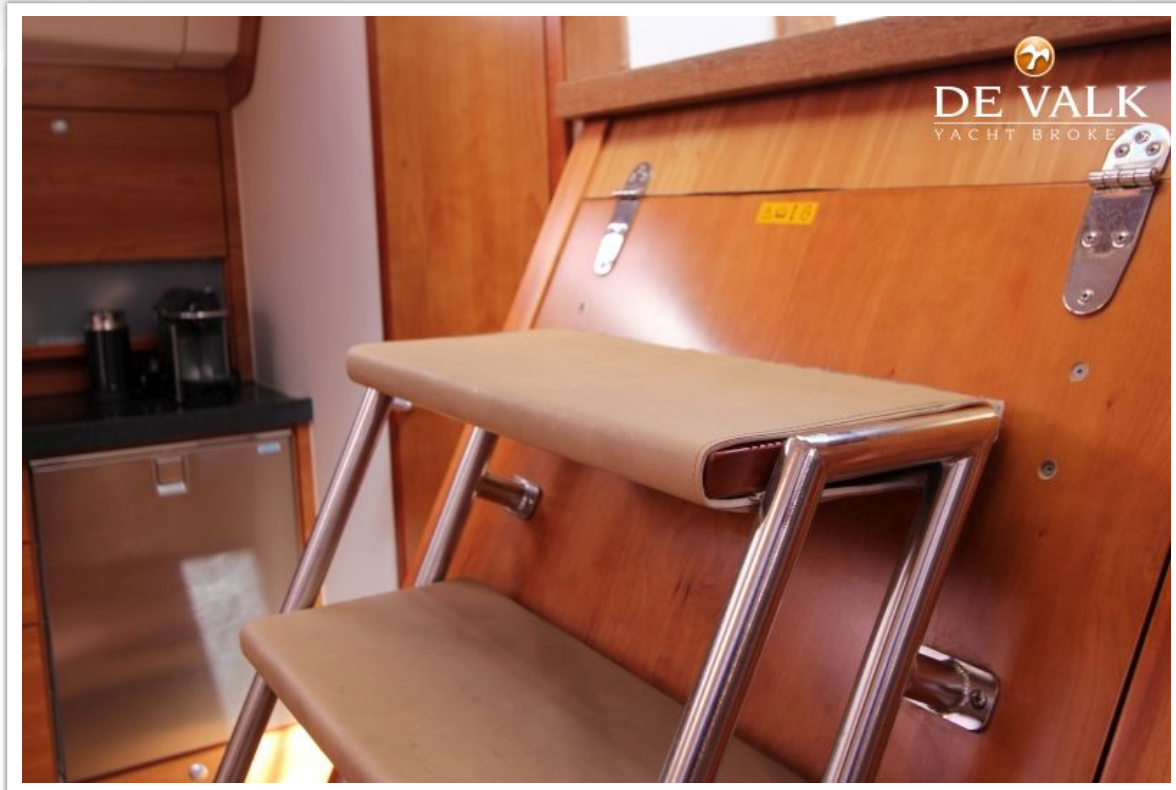
HANSE 540E



HANSE 540E



HANSE 540E



HANSE 540E

