



DE VALK  
YACHT BROKERS



## SUPER VAN CRAFT 14,7



DE VALK  
YACHT BROKERS

# SUPER VAN CRAFT 14,7

## BROKER'S COMMENTS

"This SUPER VAN CRAFT has a closed wheelhouse, roomy saloon, spacious owners cabin with double berth, separate toilet and shower, roomy galley with dinette and guest cabin with toilet. The yacht is well maintained en well equipped!"

## SPEZIFIKATIONEN

<b>Maße</b>	14,70 x 4,30 x 1,45 (m)	<b>Baumeister</b>	Klaassen
<b>Baujahr</b>	1991	<b>Kabinen</b>	2
<b>Material</b>	Stahl	<b>Schlafplätze</b>	4
<b>Motor(en)</b>	2 x DAF 825 Diesel	<b>Pk/Kw</b>	2 x 159 (pk), 116,87 (kw)
	VERKAUFT	<b>Liegeplatz</b>	contact Loosdrecht

## KONTAKT

<b>Geschäftsstelle</b>	De Valk Loosdrecht	<b>Telefon.</b>	+31 35 582 90 30
<b>Adresse</b>	't Breukeleveense Meentje 6	<b>Fax</b>	+31 (0)35 582 90 39
	1231 LM Loosdrecht / Wijdemeren	<b>E-Mail -Adresse</b>	loosdrecht@devalk.nl
	The Netherlands		

## DISCLAIMER

Obwohl wir uns der Richtigkeit, Vollständigkeit und Aktualität unserer Informationen größte Sorgfalt widmen, können aus den Informationen keine Rechtsansprüche abgeleitet werden.



# SUPER VAN CRAFT 14,7

## GENERAL

Steel motor yacht Super van Craft 14,70, named Allure, built in 1990, launched in 1991 by Klaassen - The Netherlands, dim.: 14,70 x 4,30 x 1,45m, headway 3.90m, steel round bilged hull (25, 6 and 5 mm), teak deck, teak superstructures, aluminium framed windows, displacement approx. 30 tonnes, capacity fuel tanks 2.200 litres, capacity watertanks 1.400 litres, mechanic steering.

## UNTERKUNFT

Teak interior, closed wheelhouse, roomy saloon, galley with dinette, roomy owners cabin with double Auping berth, electric toilet and separate shower, guest cabin with two berths in V and electric toilet, Eberspacher central heating with radiators, hot water by boiler, galley features Siemens 4 plate cooker, Siemens dish washer, Moulinex micro wave, extractor, Bosch fridge plus 2nd Bosch fridge in wheelhouse), Candy washer/dryer in owners bathroom.

## MOTOR(EN)

Twin Daf 159 hp diesels, engine type DH825M, Twin Disc MG506 2:1 gearboxes, intercooling system with wet exhausts, engines from approx. 1990, running hours approx. 2.300, consumption 10-20 l/hour, speed approx. 8 knots, 3 blade propellers, hydraulic bowthruster 15 hp, electric sternthruster, deck wash, bilge pump, 24/220 volt electric system (partly renewed 2000), Mastervolt systems; control panel, battery charger, inverter, Onan 3,5 KVA at 1.500 RPM generator with exhaust separator, shore power.

## NAVIGATION

Compass, echo sounder, log (defect), windset, rudder indicator (all VDO), Sailor RT2047 VHF with Atis, Furuno radar, Robertson AP200 autopilot, Simrad CE40 chartplotter.

## AUSRÜSTUNG

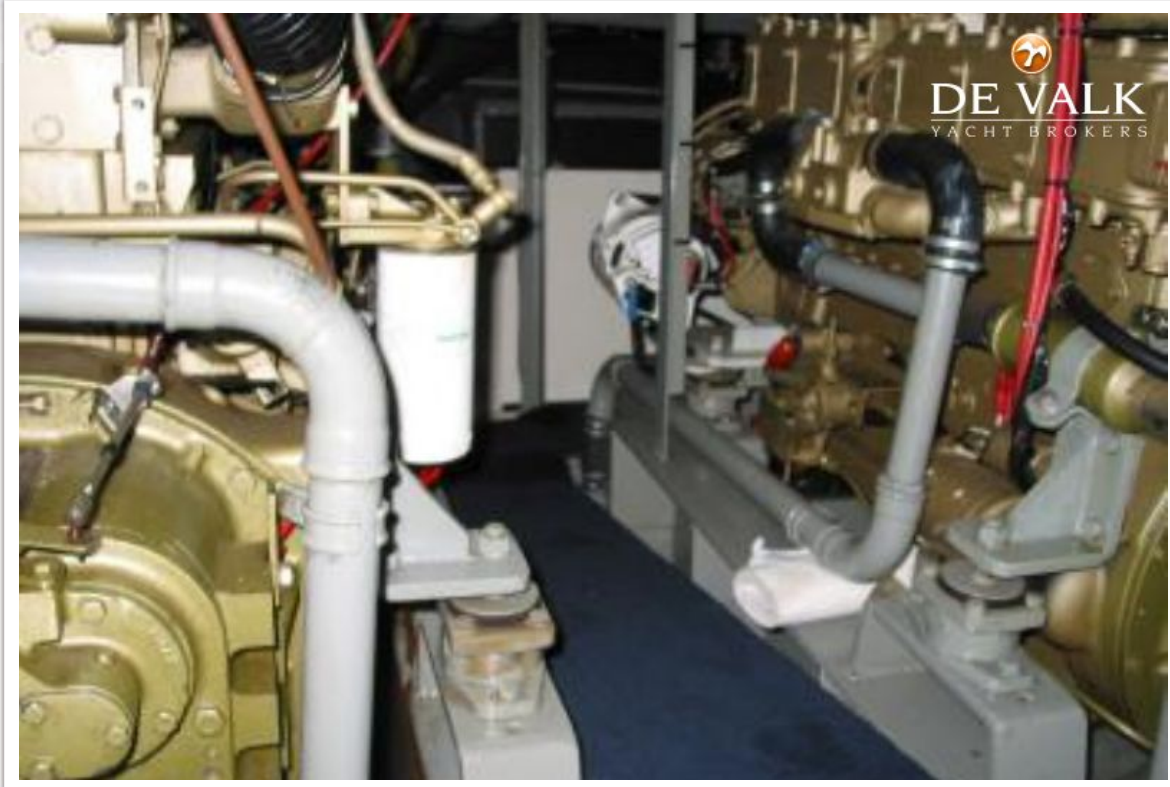
Blaupunkt Arizona DJ70 radio/cd, Kenwood stereo in saloon with Bose system and speakers, Sony video, Siemens TV, satellite receiver, Vetus electric windlass, search light, swimplatform, boarding ladder, wooden gangway, sea railing with teak trim, 3x parallel wipers.



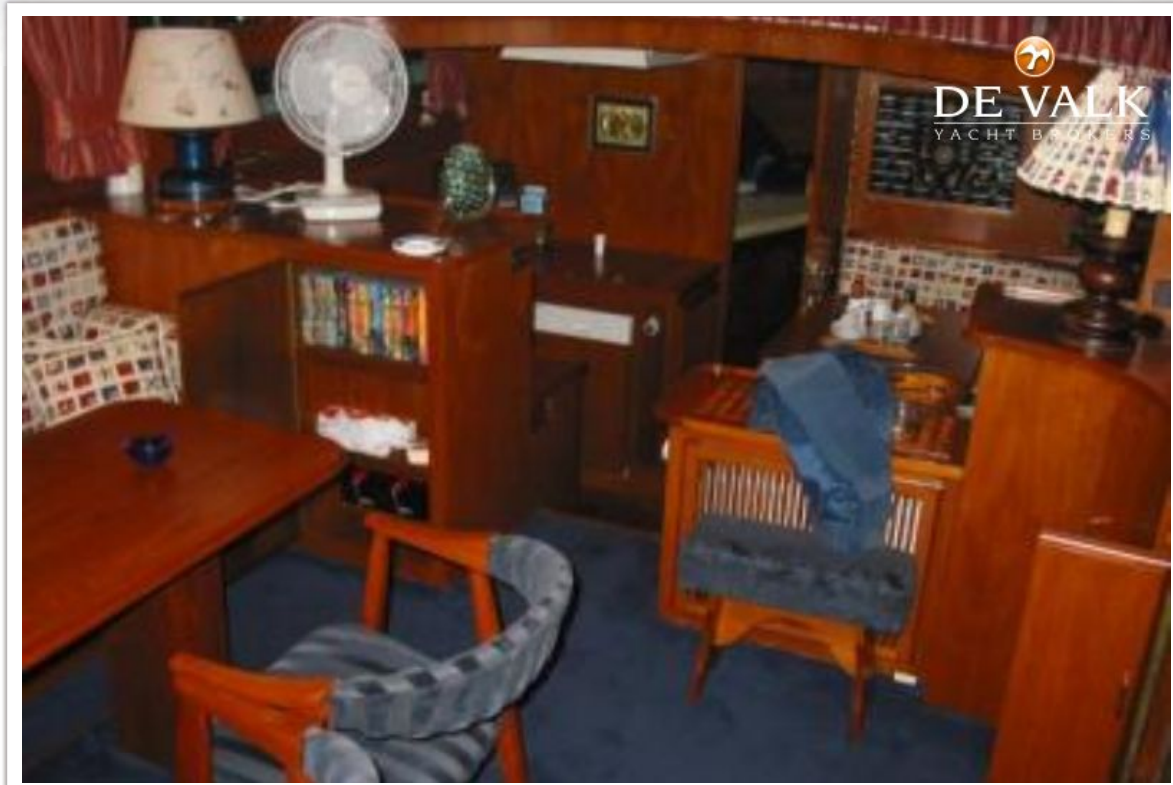
# SUPER VAN CRAFT 14,7



# SUPER VAN CRAFT 14,7



# SUPER VAN CRAFT 14,7



# SUPER VAN CRAFT 14,7



# SUPER VAN CRAFT 14,7

