



DE VALK  
YACHT BROKERS



FEADSHIP VAN LENT



DE VALK  
YACHT BROKERS

## KOMMENTARE DES MAKLERS

The Feadship van Lent will be auctioned online at Bright Auctions. Bids can only be placed online at Bright Auctions. All information about the auction is available on the website <https://bit.ly/4ko8FKp> A classic motor yacht with character and a timeless appearance. The current owner is the third owner of the yacht and has kept her as original as possible especially the interior. An hull report is available, providing additional insight into the condition of the vessel.

*Mark Hesselmans*

## TECHNISCHE DATEN

<b>Maße</b>	15.57 x 4.30 x 1.40 (m)	<b>Werft</b>	Feadship Van Lent
<b>Baujahr</b>	1965	<b>Kabinen</b>	2
<b>Material</b>	Stahl	<b>Kojen</b>	4
<b>Motor(en)</b>	2 x Mercedes OM352 diesel	<b>PS/kW</b>	2 x 125.00 (PS), 92.00 (kW)
<b>Angebotspreis</b>	€ 199.500 (MwSt. Bezahlt)	<b>Liegeplatz</b>	contact Loosdrecht

## KONTAKT

<b>Verkaufsbüro</b>	De Valk Loosdrecht B.V.	<b>Telefon</b>	+31 (0)35 582 90 30
<b>Adresse</b>	't Breukeleveense Meentje 6 1231LM Loosdrecht / Wijdemeren NL	<b>E-Mail</b>	loosdrecht@devalk.nl

## HAFTUNGS AUSSCHLUSS

Diese Angaben erfolgen nach bestem Wissen, können jedoch nicht garantiert werden.



## ALLGEMEIN

<b>Modell</b>	FEADSHIP VAN LENT
<b>Typ</b>	Motoryacht
<b>Rumpflänge (m)</b>	15,57
<b>Breite (m)</b>	4,30
<b>Tiefgang (m)</b>	1,40
<b>Baujahr</b>	1965
<b>Werft</b>	Feadship Van Lent
<b>Land</b>	Niederlande
<b>Gewicht (t)</b>	22
<b>Rumpfmateriale</b>	Stahl
<b>Rumpffarbe</b>	Weiß
<b>Rumpfform</b>	Deep-V
<b>Deckmateriale</b>	Stahl
<b>Deck Finish</b>	Teak 2009/2010 1/2 inch teak (12.5 mm) on 1/2 inch marine ply
<b>Pflicht Bedeckung</b>	Teak
<b>Fenster Einfassung</b>	Chromium plated brass
<b>Fenster Material</b>	Standard Glas
<b>Decksluke</b>	ja
<b>Bullauge</b>	Edelstahl 14
<b>Mast legbar</b>	handbetrieb
<b>Treibstofftank (Liter)</b>	Stahl 1750
<b>Treibstofftank 2 (Liter)</b>	Stahl 350
<b>Trinkwassertank (Liter)</b>	Stahl 1000
<b>Füllstandsanzeige (Trinkwasser)</b>	ja
<b>Fäkaelien Tank (Liter)</b>	GFK 2X
<b>Grauwassertank (Liter)</b>	1 steel and 1 stainless steel
<b>Weitere Info Rumpf</b>	ja
<b>Weitere Info</b>	ja

## UNTERKUNFT



Kabinen	2
Kojen	4
Innen	Teak
Fussboden	Teak With carpet
Achterdeck	ja
Schiebedach	handbetrieben
Kartentisch	Collapsible
Achterkabine	ja
Dinette zum umbauen	+ saloon bench can be converted in to a double
Tür zum Cockpit	ja
Kombüse	ja
Arbeitsfläche	Original Primrose Formica
Spülbecken	Edelstahl
Herd	elektrisch
Mikrowelle/Backofen Kombi	ja
Kuhlschrank	ja
Wasserdruck System	elektrisch
Eignerkabine	Doppelbett
Kleiderschrank	hängend
Badezimmer	en suite
Toilet	en suite
Toilette System	elektrisch
Handwaschbecken	im Badezimmer
Dusche	en suite
Gästekabine 1	V-Bett
Badezimmer	en suite
Toilette	en suite
Toilette System	elektrisch
Handwaschbecken	im Badezimmer
Dusche	en suite
Weitere Info	ja



## MASCHINEN

<b>Motoranzahl</b>	2
<b>Marke</b>	Mercedes
<b>Typ</b>	OM352
<b>PS</b>	125
<b>kW</b>	92
<b>Kraftstoffart</b>	Diesel
<b>Motorstunden</b>	3000
<b>Kühlungssystem Motor</b>	indirekte Wärmetauscher
<b>Antrieb</b>	Schraubenwelle
<b>Motor bedienung</b>	Seilzug Kabel
<b>Gewende getriebe</b>	hydraulic
<b>Bugschraube</b>	elektrisch
<b>Propeller Typ</b>	fest
<b>Propellerwelle schmierung</b>	Fett
<b>Elektrische Bilgenpumpe</b>	ja
<b>Generator</b>	Nassauspuff Whisper 8K
<b>Starterbatterie</b>	2X
<b>Versorgungsbatterie</b>	4X
<b>Generatorbatterie</b>	ja
<b>Bugschraubebatterie</b>	ja
<b>Batterie Ladegerat/Umwandler</b>	Mastervolt Mass Combi 24 V/2Kw -60 hz
<b>Weitere Info</b>	Fuel system, fitted with Racor twin switchable primary fuel filt

## NAVIGATION

<b>Kompass</b>	2X
<b>Tiefenanziege</b>	Echo sounder St 50 Tridata (not working)
<b>Logge</b>	Raymarine Log St 60 Tridata
<b>Windlupe anzeige</b>	Wind instruments St 40
<b>UKW</b>	Icom Marine IC M 59
<b>Autopilot</b>	Original Pinta as fitted from new by Van Lent requires attention

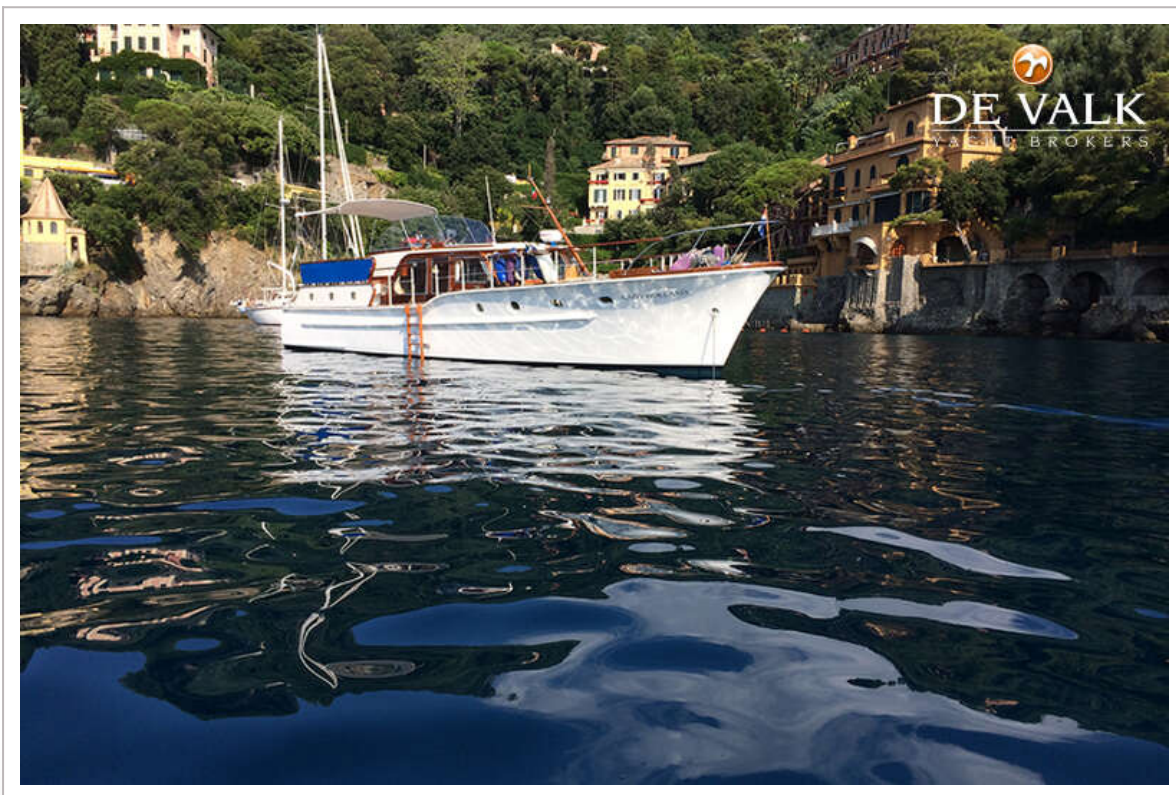


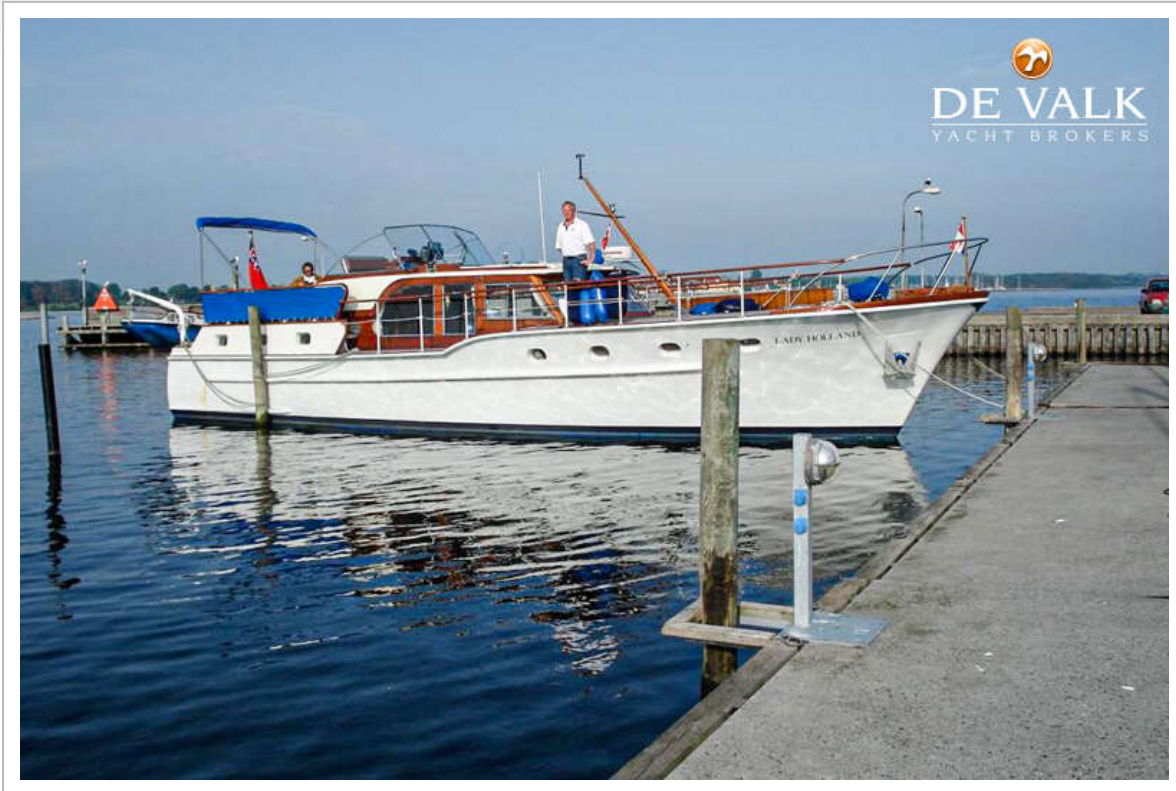
Radar/Plotter	ja
Navigation Beleuchtung	ja

## AUSRÜSTUNG

Bimini	ja
Cockpit Tisch	Needs maintenance
Badeleiter	Holz 2, 1x stainless steel and 1x original timber ladder
Anker	Danforth
Ankerkette	12mm chain 80m
Ankerwinde	elektrisch Francis E900
Beiboot	fest Rumpf 11 ft & 25 HP
Davits	Stahl
See Reling	Edelstahl
Seiten-Einstieg Seereling	Both sides
Klar Sicht Scheibe	Defect
Horn	ja
Fenderkissen	ja
Festmacher	ja
Radio	SSB





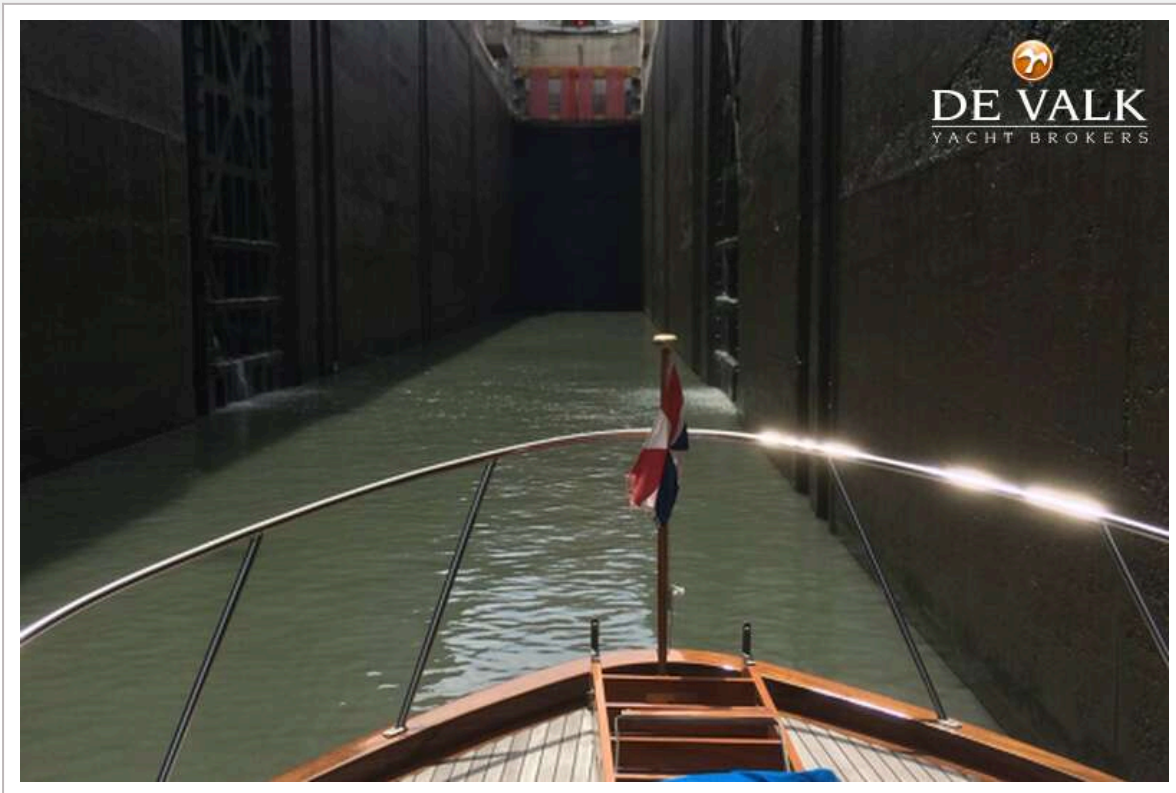




# FEADSHIP VAN LENT



# FEADSHIP VAN LENT

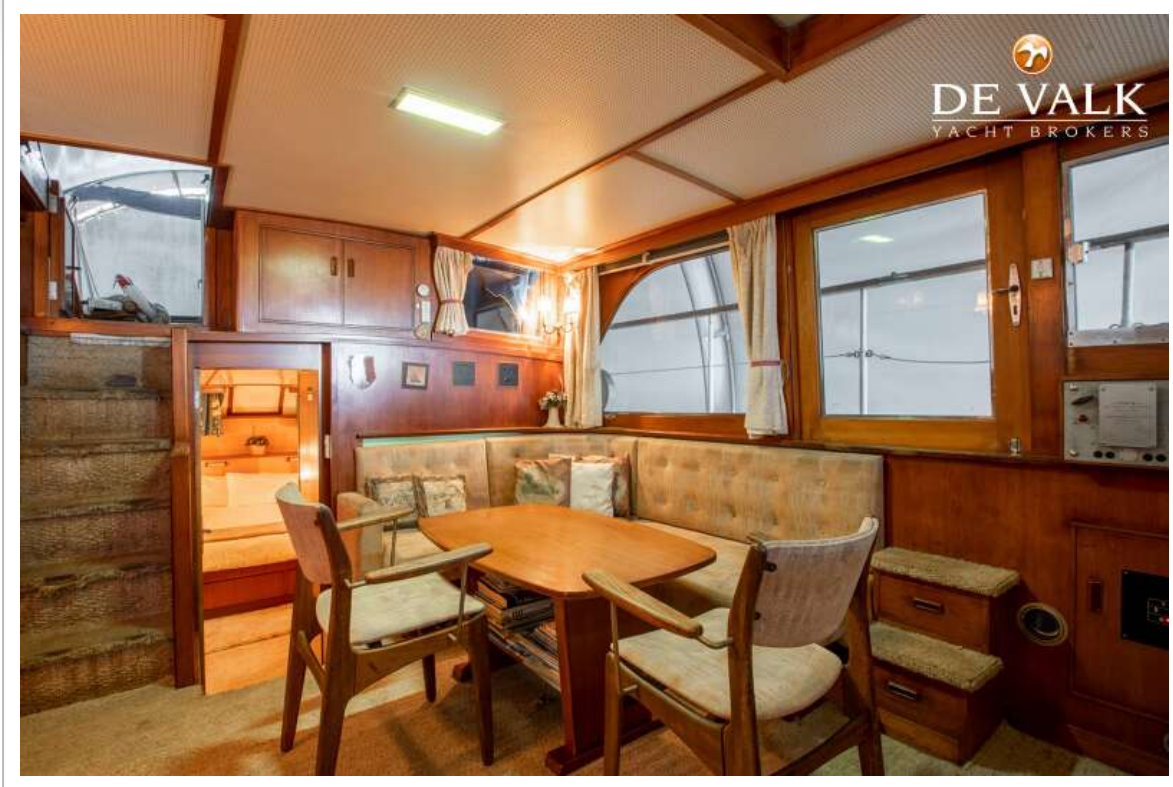




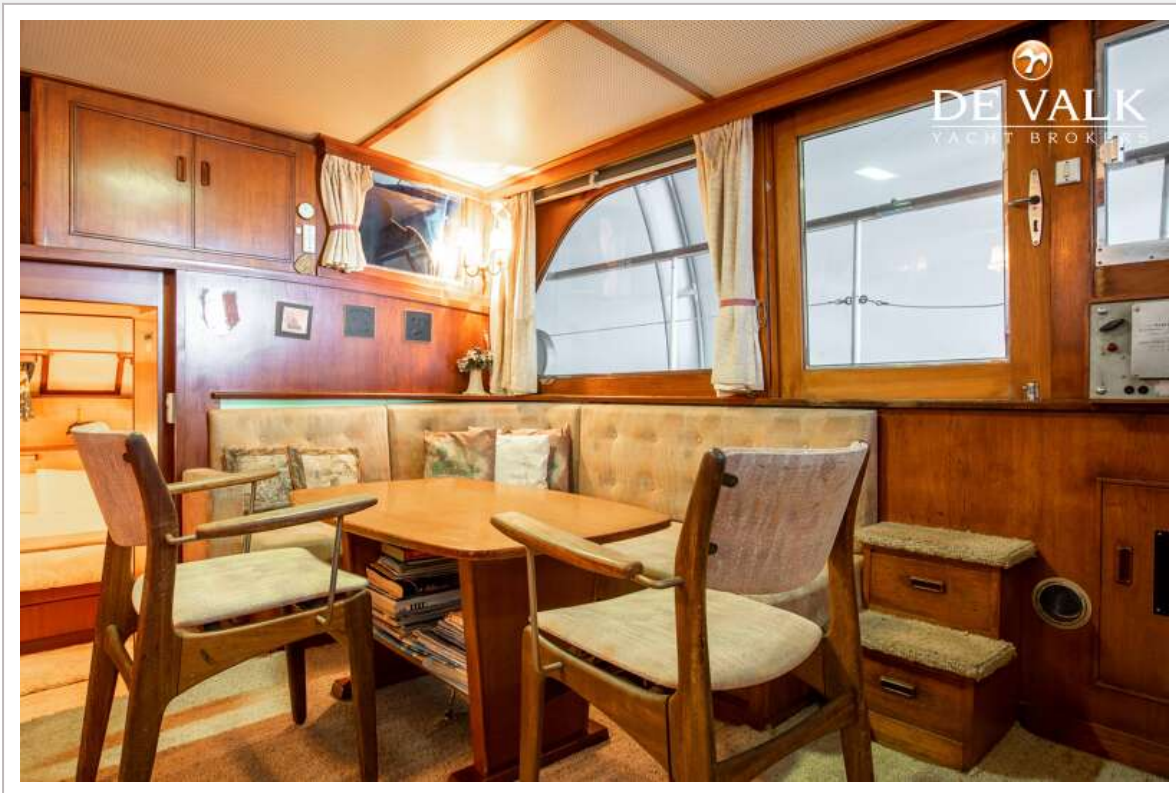




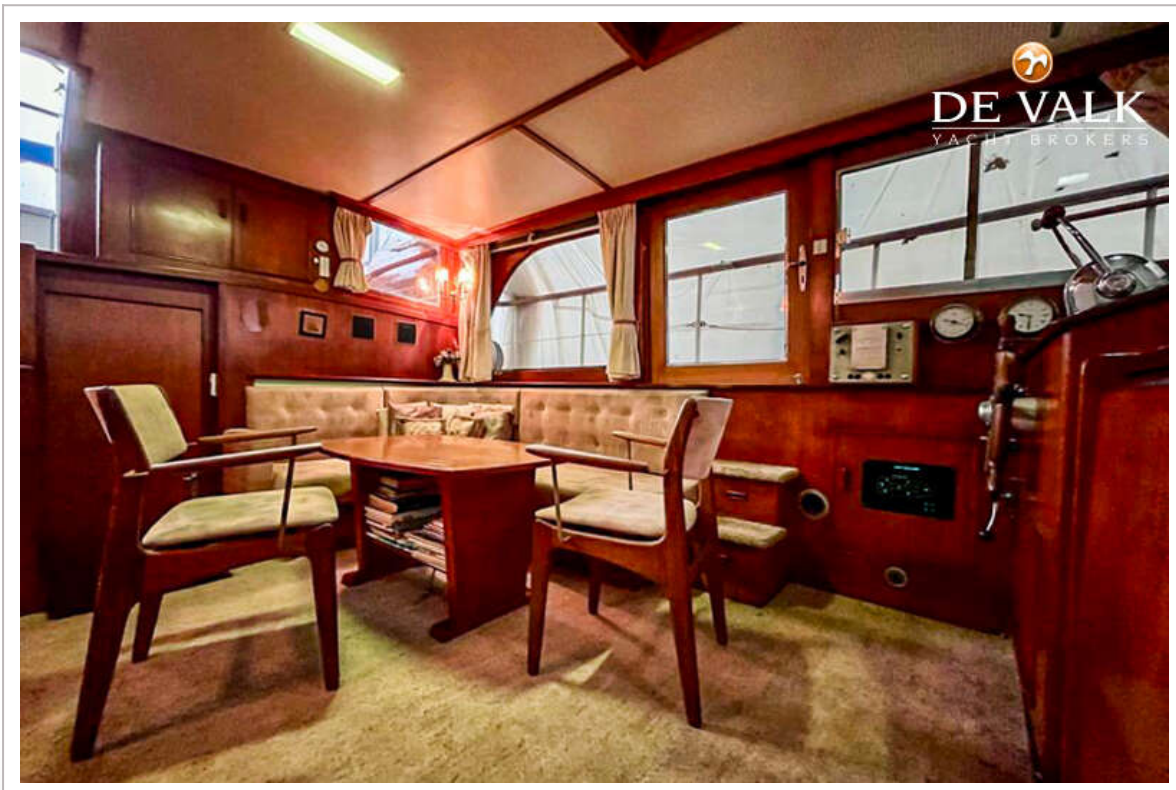
# FEADSHIP VAN LENT

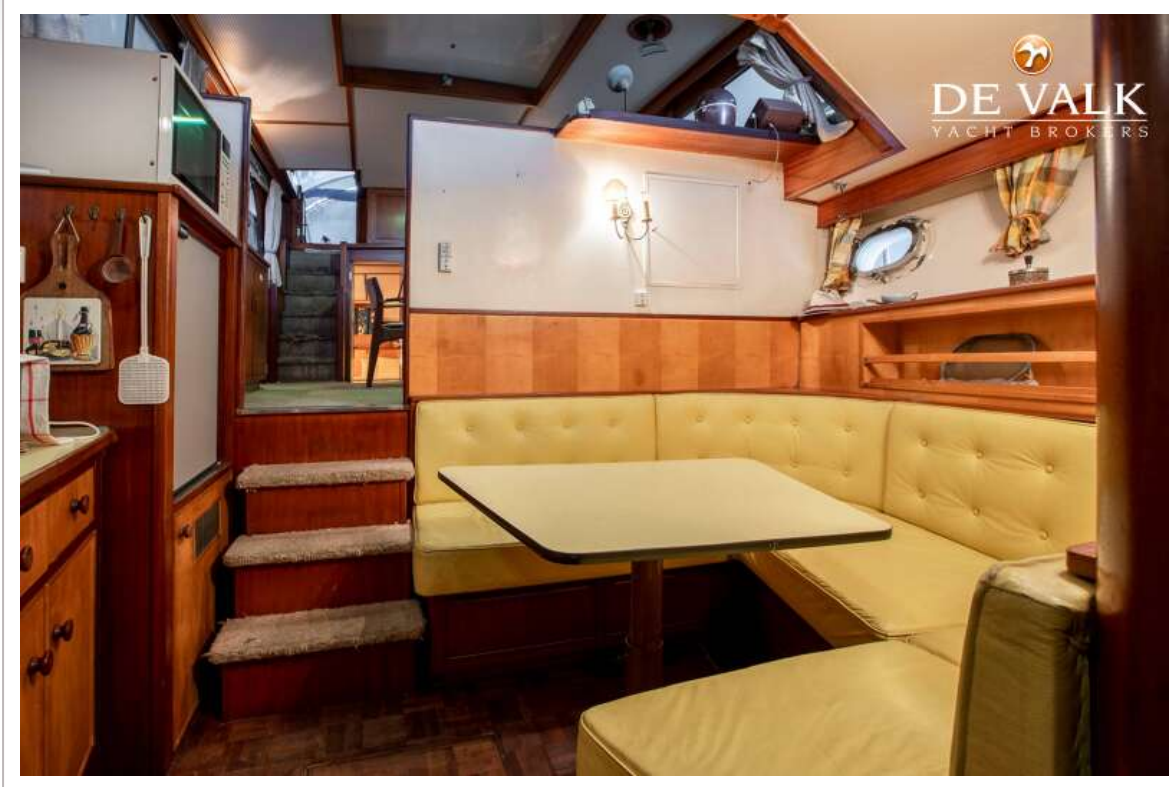


# FEADSHIP VAN LENT



# FEADSHIP VAN LENT

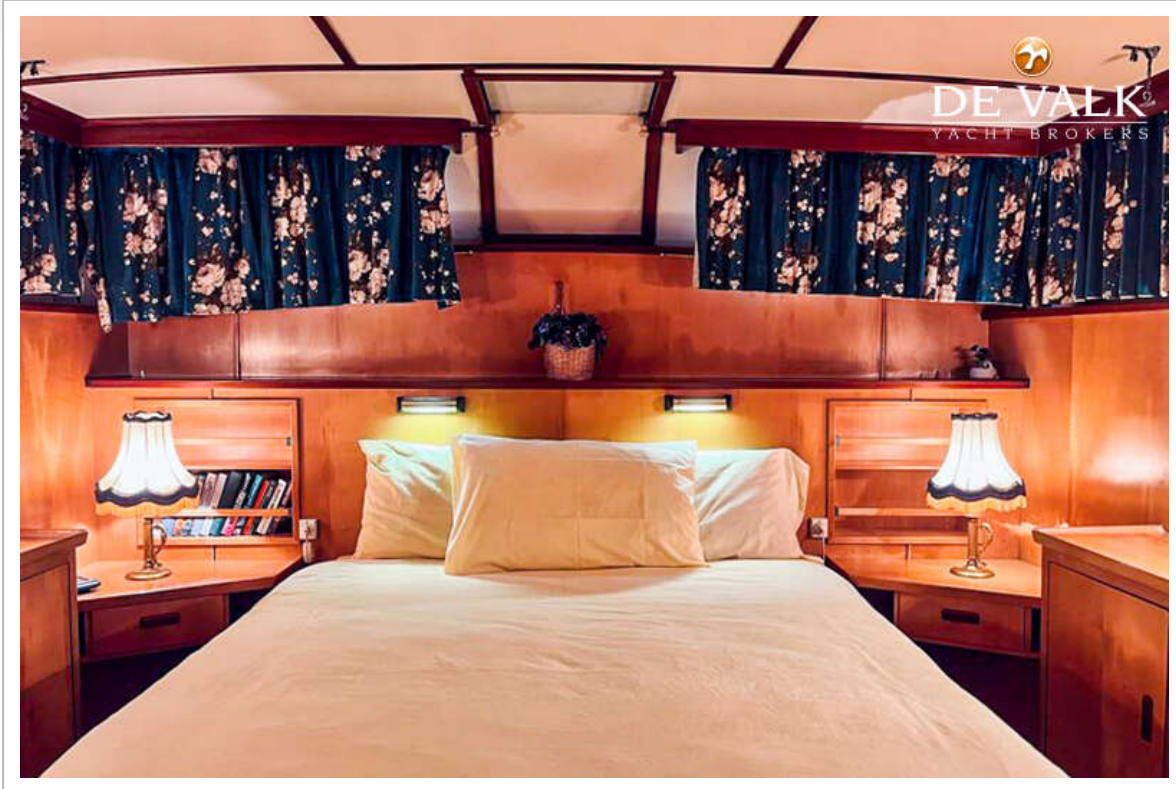




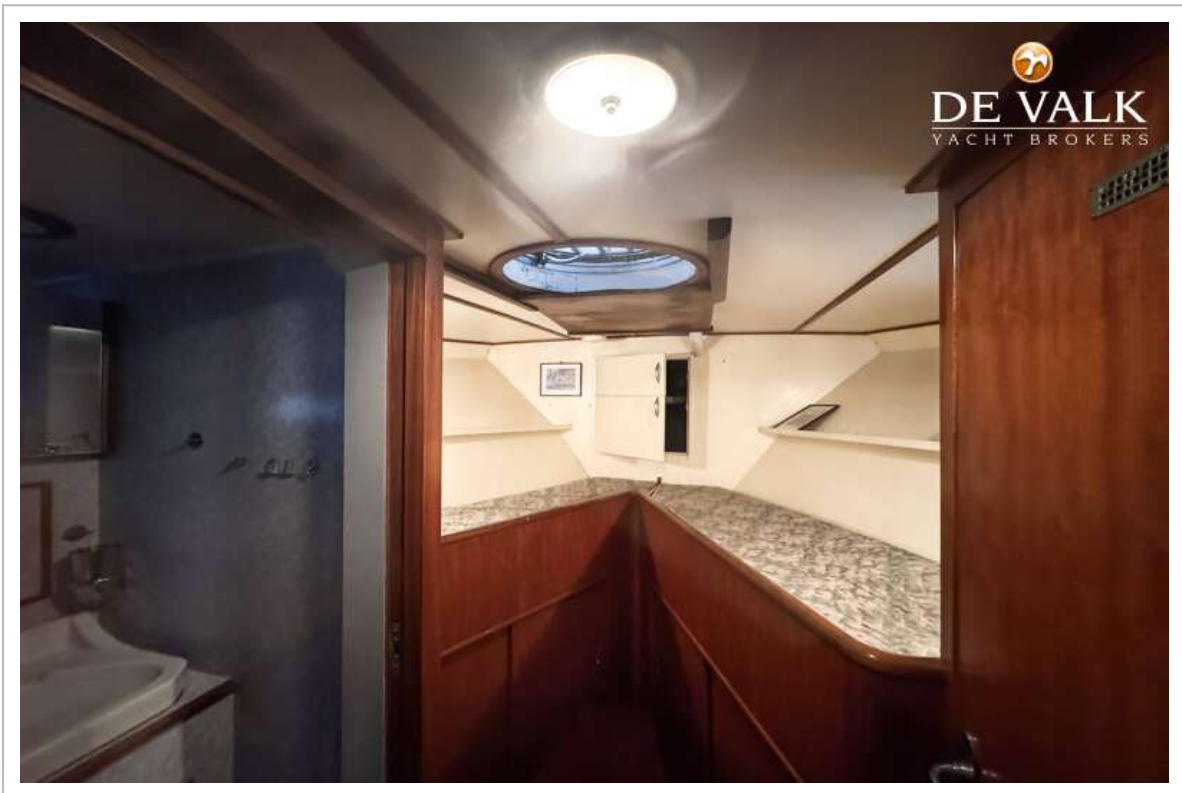
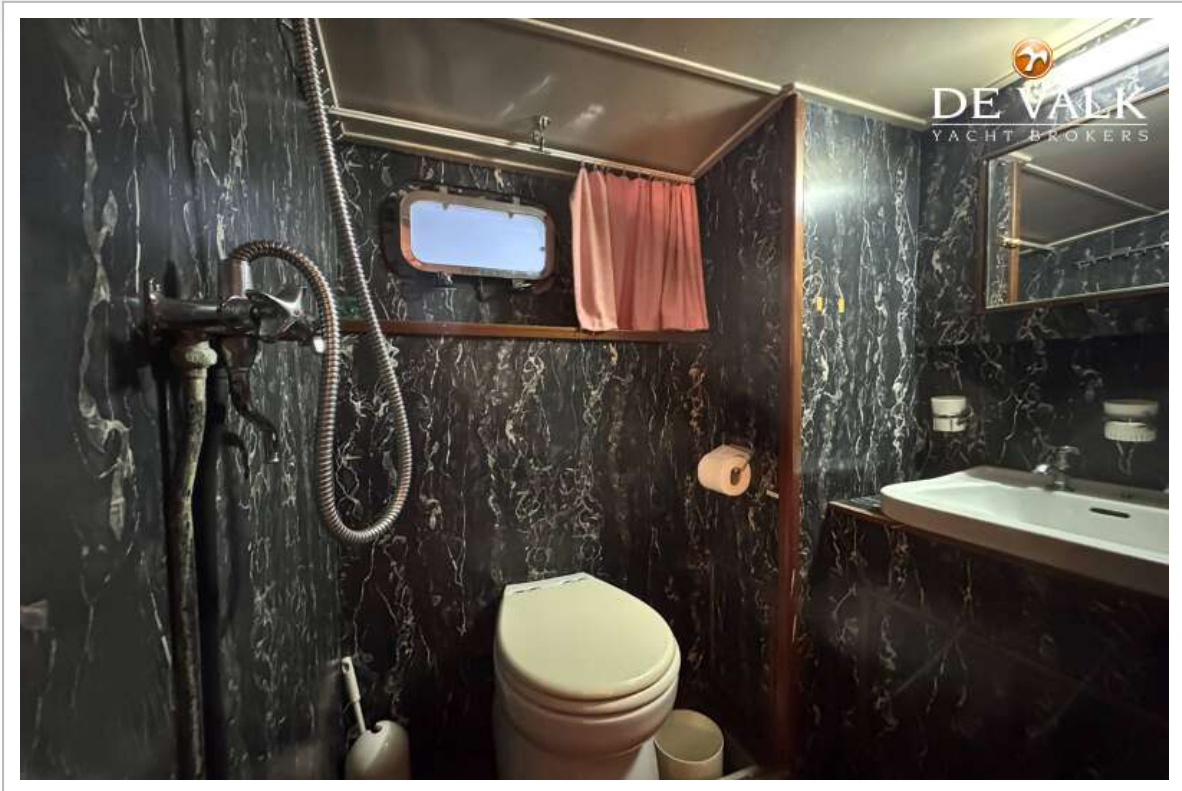
# FEADSHIP VAN LENT

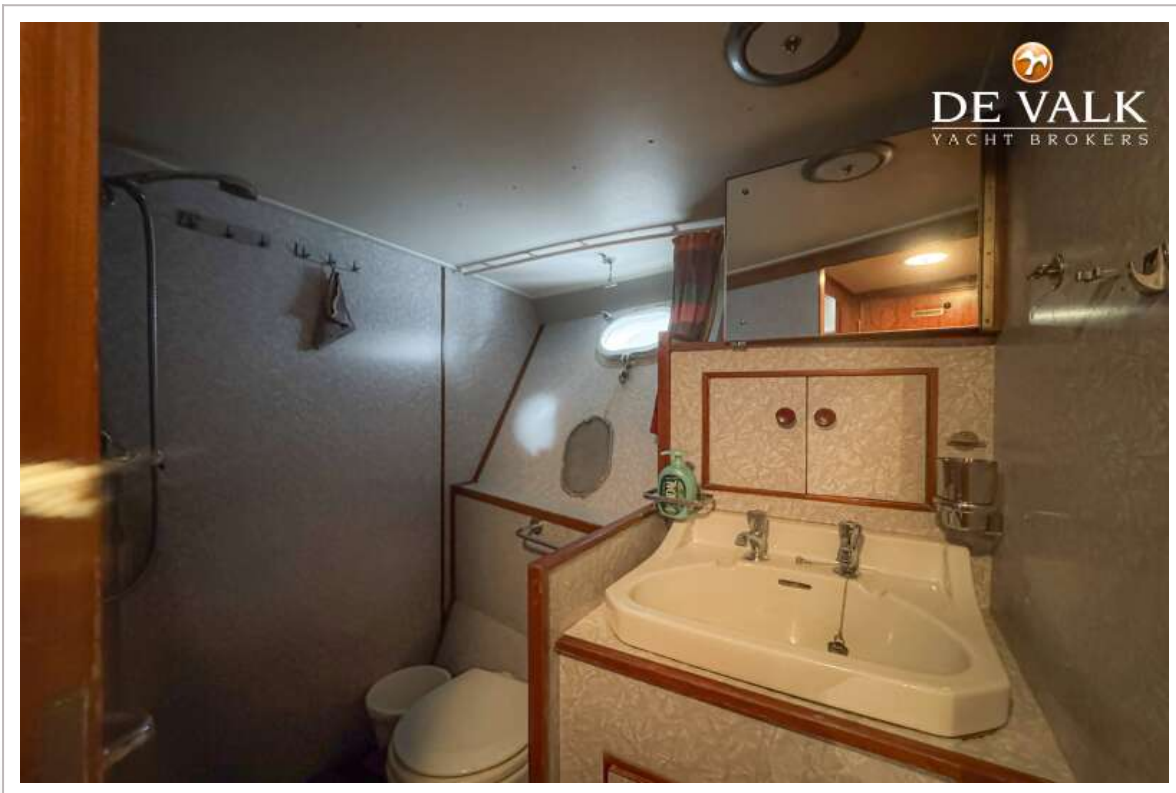


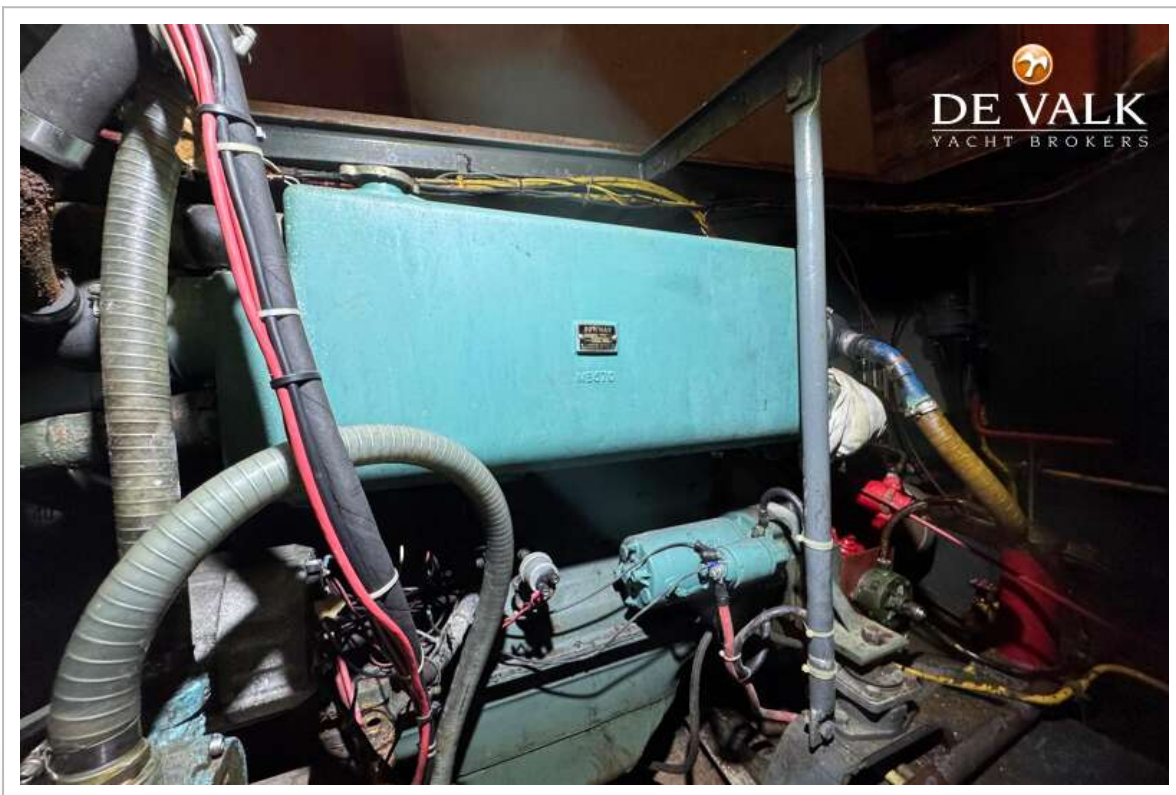
# FEADSHIP VAN LENT

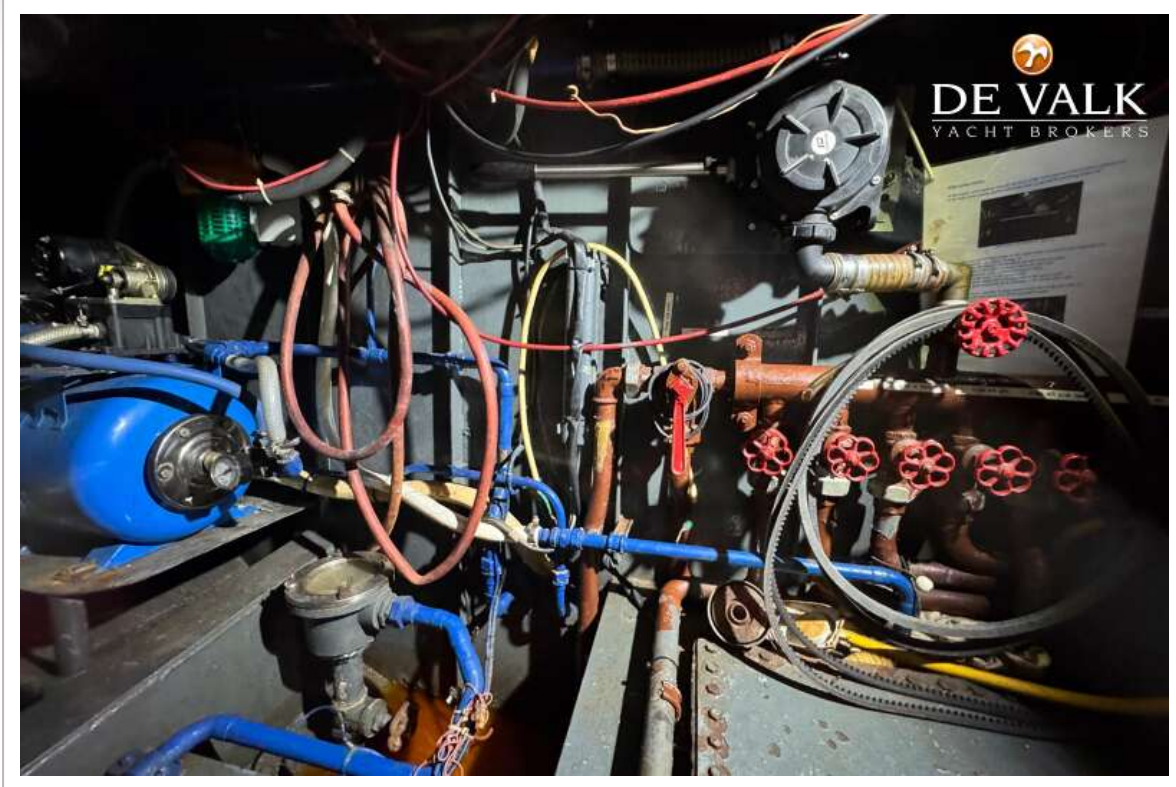


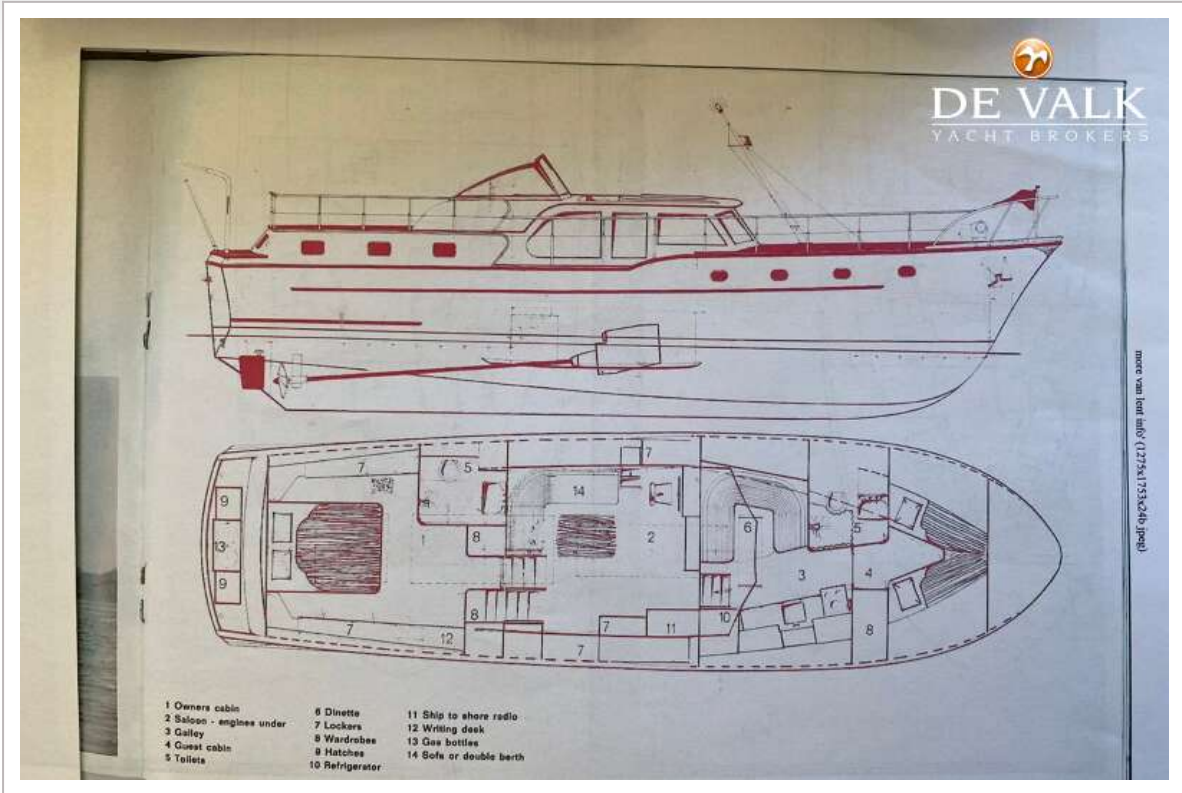












**DE VALK**  
YACHT BROKERS

c. van lent & zonen 008 (1275x1753x24b.jpg)

*51 ft. Raised deck type twin screw diesel Motor Yacht*

Length O.A.	51' 1" - 15,57 m
Length W.L.	48' 4" - 14,52 m
Beam	14' 1" - 4,30 m
Draft	4' 1" - 1,26 m
Displacement	approx. 20 tons
Construction	Hull and decks all-welded, Lloyds tested Siemens-Martin steel Superstructure and deck covering of selected Burns teak; Interior of teak and best quality veneered marine ply. Colour schemes to owners choice
Main engines	Handed pair of DAF diesel engines type DS 575 M each developing 140 HP at 2300 RPM. Hydraulic reverse/reduction gears. Other engines to owners choice
Fuel capacity	468 gallons (2100 liters)
Water capacity	225 gallons (1000 liters)
Standard equipment	Ship to shore radio, direction finder, automatic pilot, electric anchor winch, echo sounder, central heating, diesel generator and many other special features

