



DE VALK
YACHT BROKERS

NAUTOR SWAN 43



DE VALK
YACHT BROKERS

KOMMENTARE DES MAKLERS

This beautiful classic Nautor Swan 43 is in excellent condition due to all renewing's in the last 12 years. An iconic Swan from the famous drawing board by Sparkman & Stephens. This Swan is a sight in every port where you arrive. This unique sailing yacht is now on shore next to our office in Sint Annaland. in the South-West of the Netherlands, so you are 7 days a week welcome to visit this beauty.

Jan-Ward van Dantzig

TECHNISCHE DATEN

Maße	13.04 x 3.55 x 2.20 (m)	Werft	Nautor Swan AB
Baujahr	1969	Kabinen	3
Material	GFK	Kojen	7
Motor(en)	1 x Beta Marina Kubota BV2203 diesel	PS/kW	50.00 (PS), 36.80 (kW)
Angebotspreis	verkauft (MwSt.)	Liegeplatz	beim Verkaufsbüro

KONTAKT

Verkaufsbüro	De Valk Sint Annaland B.V.	Telefon	+31 166 601 000
Adresse	Koelhuisweg 4 4697 RM Sint Annaland NL	E-Mail	sintannaland@devalk.nl

HAFTUNGSAUSSCHLUSS

Diese Angaben erfolgen nach bestem Wissen, können jedoch nicht garantiert werden.



ALLGEMEIN

Modell	NAUTOR SWAN 43
Typ	Segelyacht
Rumpflänge (m)	13,04
Wasserlinienlänge (m)	9,45
Breite (m)	3,55
Tiefgang (m)	2,20
Durchfahrtshöhe (m)	18,70
Stehhöhe (m)	1,90
Baujahr	1969
Werft	Nautor Swan AB
Land	Finnland
Entwerfer	Sparkman & Stephens
Gewicht (t)	10,5
Ballast (Ton)	Blei 4,7
CE Norm	NA
Rumpfmateri al	GFK
Rumpffarbe	Weiß (painted in 2006)
Rumpfform	S-Spant (Semi)
Art Kiel	Flossen Kiel
Material Aufbauten	GFK
Stossliste	New in 2006 : hardwood
Deckmaterial	GFK (with honeycomb)
Deck Finish	Teak
Deck Finish Aufbauten	gemalt (painted white in 2006)
Pflicht Bedeckung	Teak
Antifouling (Jahr)	(Coppercoat) 2016 & 2022
Dorado Belufter	2 x Stainless steel with a stainless steel protection bar
Fenster Einfassung	Edelstahl
Fenster Material	Standard Glas
Decksluke	New in 2006 : Man Ship (with stainless steel frames)



Bullauge	Edelstahl
Isolation	Schaumplatten (behind the paneling)
Treibstofftank (Liter)	Edelstahl 120 (diesel system cleaned and tank flushed in 2023)
Trinkwassertank (Liter)	Edelstahl 350
Füllstandsanzeige (Trinkwasser)	ja
Fäkaelien Tank (Liter)	Edelstahl Custom-made tank available; still to be installed
Füllstandsanzeige (Fakaelientank)	Still to be connected
Fäkaelien Tankablauf	Deck Verbind. + Uw Linie Still to be connected
Radsteuerung	Leather (New in 2021) covered stainless steel steering wheel
Aussen Steuerung	Kabelsteuerung Pedestal painted in 2006
Not-Pinne	ja
Weitere Info Rumpf	In 2016, the underwater hull had a preventive osmose treatment with with 2 layers of laminate/fabric in combination with vinylester resin and final finished with 4 layers of Coppercoat. On the work done there is 10 year guarantee in place till 2026.
Weitere Info	New in 2017: Rudder blade with original stainless steel construction and a new Corecell foam core.
Weitere Info	All sea cocks (all "Blake") were last serviced in 2021

UNTERKUNFT

Kabinen	3
Kojen	7
Innen	Teak With white panels
Fussboden	Teak und Holly New in 2007 (as well as the ceiling)
Salon	New in 2007 : Cushions & Alcantara upholstery
Standhöhe Salon (m)	1.85 - 2.00
Heizung	Diesel Heißluft Webasto (serviced in 2022)
Kartentisch	On port side - Headroom 1.85 m
Achterkabine	2 x
Dinette	ja
Umbaubar Koje	Port side sofa: 1.94x0.60m - starboard side sofa: 2x 1.94x0.55m
Kombüse	On starboard side - Headroom 1.85 m



Arbeitsfläche	Duropol (White)
Spülbecken	Edelstahl 2 x
Herd	Gas Eno 2 x burner
Ofen	Eno
Gas-Alarm	New in 2021
Kühlschrank	Top loader with an Isotherm cold plate (New in 2007)
Warmwasser System	220V + Motor New in 2021 : 15 Liter Quick B3 Boiler 800 Watt
Wasserdruck System	elektrisch New in 2021 : Electric Jabsco ParMax Plus4 water pump
Hand und/oder Fusspumpe	Foot pump at the galley
Eignerkabine	V-Bett In the front cabin - Headroom : 1.65 - 1.75 m
Länge Bett (m)	2.00 x 1.50
Kleiderschrank	Regale und hängend
Badezimmer	gemeinsam Headroom : 1.73 m
Toilet	gemeinsam
Toilette System	handbetrieb New in 2022 : Jabsco
Handwaschbecken	im Badezimmer
Dusche	gemeinsam
Weitere Info	New in 2021 : Flexima mattresses
Gästekabine 1	Port side aft cabin - Headroom 1.37 m
Länge Bett (m)	1.95 x 0.55
Kleiderschrank	Regale und hängend
Weitere Info	New in 2021 : Flexima mattress
Gästekabine 2	Starboard aft cabin
Länge Bett (m)	2.00 x 0.75/1.15
Kleiderschrank	Regale
Weitere Info	New in 2021 : Flexima mattresses
Weitere Info	The sail storage in the bow was converted into a sleeping cabin in 2006.
Weitere Info	New in 2021 : all hoses of the fresh watersystem.

MASCHINEN



Motoranzahl	1
Marke	Beta Marina Kubota
Typ	BV2203
PS	50
kW	36.80
Kraftstoffart	Diesel
Installiert im Jahr	2016
Höchstgeschwindigkeit (Kn)	7,5
Marschgeschwindigkeit (Kn)	6,5
Verbrauch (l/h)	3,5
Motorstunden	515
Kühlungssystem Motor	indirekte Wärmetauscher New in 2016
Antrieb	Schraubenwelle
Welle Dichtung	New in 2016
Motor bedienung	Seilzug Kabel New in 2016
Gewende getriebe	mechanisch New in 2016 : Twindisk & Aquadrive
Exhaust	wassergekühlt New in 2016
Propeller Typ	falt New in 2006 : Maxprop
Propellerblätter	3
Material Propellerwelle	Edelstahl New in 2006
Propellerwelle schmierung	Wasser New in 2016
Hand Bilgenpumpe	New in 2021 : 1x
Elektrische Bilgenpumpe	New in 2021 : 1x Gulper with a floater
Elektrische Anlage	New in 2007 : 12 & 220 Volt
Starterbatterie	New in 2021 : 1 x 50 Ah Optima Red Top
Versorgungsbatterie	2x 110 Ah Semi Traction (2021) & 3x 110 Ah Gel Deep Cycle (2022)
Batterie Monitor	New in 2021 : Mastervolt Battery Monitor BTM - III
Batterie Ladegerat	New in 2021 : Mastervolt 12V/25A & Victron Blue Smart 12V/30A-3
Umwandler	New in 2022 : Xenteq PurePower 12V-230V-2.000 Watt (pure Sine)



Dioden-Batterie-Koppler	ja
Landstrom	mit Kabel New shore power connection in 2007 & New cable in 2021
Weitere Info	New in 2016 : 70 A Alternator
Weitere Info	2022: Major engine service, including gearbox oil replacement.
Weitere Info	2024: Small engine service, including engine anodes replacement.

NAVIGATION

Kompass	Sestrel (on the pedestal)
Multi Control Display	New in 2007 : Raytheon ST60 Multi
Tiefenanziege	New in 2007 : Raytheon ST60 Depht
Logge	New in 2007 : Raytheon ST60 Speed
Windlupe anzeige	New in 2007 : Raytheon ST60 Wind & CH Wind
UKW	New in 2007 : Simrad RS87
Autopilot	New 2021 : Raymarine Evolution EV-400 Sail with a hydraulic "Lecomble & Smith" heavy duty linear drive
Ruderwinkel Anzeige	Via autopilot
Radar	New in 2021 : Raymarine Quantum Q24D (dome mounted in the mast)
GPS	New in 2007 : Furuno GPS
Plotter/GPS	New in 2016 : Raymarine E7 hybridtouch (on the pedestal)
Navtex	New in 2007 : Furuno NX-300
Navigation Beleuchtung	Side lights : (New in 2022) Aqua Signal LED
Weitere Info	Raymarine S100 Remote (wireless remote for the autopilot)
Weitere Info	Due to the wiFi in the chartplotter, you can connect a smartphone and/or a tablet to chair the chartplotter information.

AUSRÜSTUNG

Spritzverdek	New in 2021 : Sand coloured
Kuchenbude	New in 2021 : Sand coloured
Winterplane	New in 2006



Cockpit Polster	New in 2021 : 2 x Grey Comfort Seats
Cockpit Tisch	New in 2021 : Removable teak table with folding side panels
Badeleiter	Stainless steel
Anker	CQR Pflugschar 35 lbs
Ankerkette	10 mm 40 m
Ankerwinde	elektrisch Ideal Windlass Co.
Ausserborder Halterung	Teak (on the pushpit)
See Reling	Draht/Seil 2 x Stainless steel
Zupackenschiene (aufbauten)	Teak Varnished
Seiten-Einstieg Seereling	On starboard sides
Heckkorb	Stainless steel
Bugkorb	Stainless steel
Rettungsinsel	Container Plastimo Cruiser ORC/RRORC
Rettungsinsel (Pers)	6
Letzte Wartung Rettungsinsel	Valid till 03-2025
Sicherheitsleine auf Deck	ja
Radar Reflektor	ja
Fenderkissen	ja
Festmacher	ja
Radio-CD Spieler	New in 2021: Fusion MS-RA70
Lautsprecher im Pflicht	New in 2021: 2 x waterproof
Lautsprecher im Salon	New in 2021: 4 x Pioneer
Uhr - Barometer	Chelsea
Feuerloscher	New in 2021
Weitere Info	New in 2021: Stainless steel hoses at the stove & gas bottle & new solenoid valve.
Weitere Info	New in 2021 : 2 x Fire-blanket
Weitere Info	Sand coloured pedestal & steering wheel cover

RIGG

Rig	Sloop New in 2006
-----	-------------------



Stehendes Gut	Dyform New in 2006 (last inspection carried out in 2021)
Marke Mast	Sparcraft New in 2006 (50 cm longer than original mast)
Material Mast	Aluminium New in 2006
Salings	New in 2006 : 2 x set
Durchgehende Mast	ja
Großsegel-Persenning	New in 2021 : Sand coloured
Latten traveller	New in 2023
Durchelatted großsegel	New in 2023 : Elvstrom - Epex Vectran/Technora
Genoa I	Dacron Genoa I (light weather)
Genoa II	New in 2022: Elvstrom - Epex Vectran/Technora : furling genoa II
Rollreffanlage	New in 2006 : Reckmann RS2000-20
Genoa-Persenning	New in 2021 : Sand coloured
Gennaker	UK Sails
Spi	Van Vliet Sails : Mylar
Sturmfock	Dacron
Reff Vorrichtung	Reffleinen
Achterstag Spanner	hydraulik Navtec
Baumniederhohler	mechanisch New in 2006 : Quickvang
Genoa Schotwischen	New in 2008 : 2 x Andersen 46 ST
Fall Wischen	Barlow : 2 x 30 ST & 2 x 30
Spi Wischen	New in 2008 : 2 x Andersen 28 ST
Reff Wunsch	1 x Barlow 16
Spi-Baum	Aluminium (original)
Isolierte Heckstag	New in 2006
Weitere Info	1 x Aluminium folding maststep. Various other older sails.
Weitere Info	Running rigg renewed in 2006 & some recently renewed. Lazy Jacks



NAUTOR SWAN 43



NAUTOR SWAN 43



NAUTOR SWAN 43



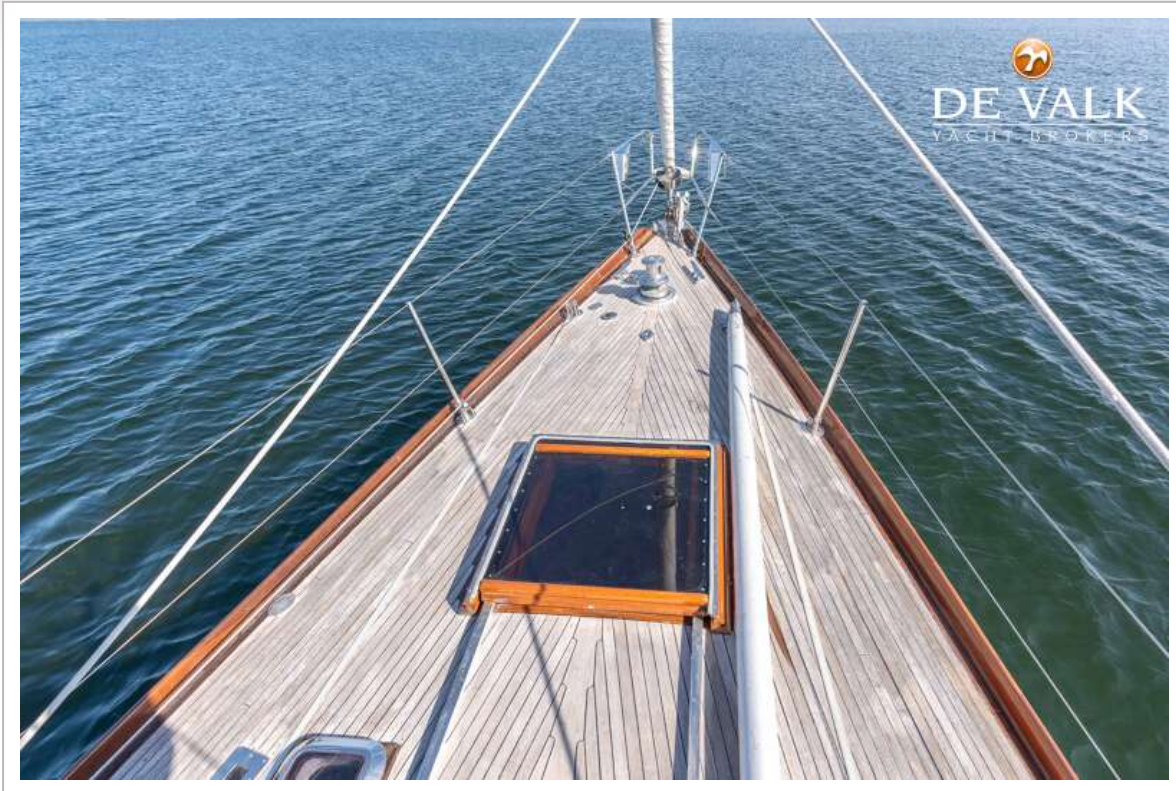
NAUTOR SWAN 43



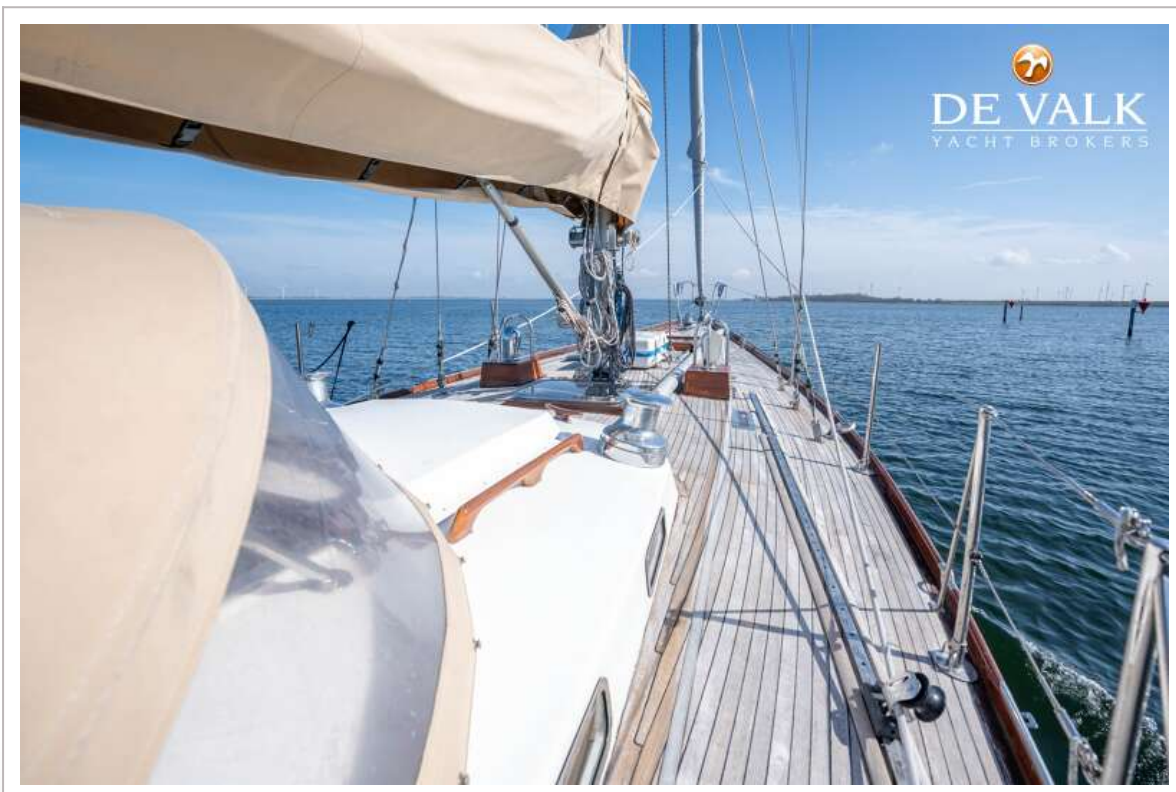
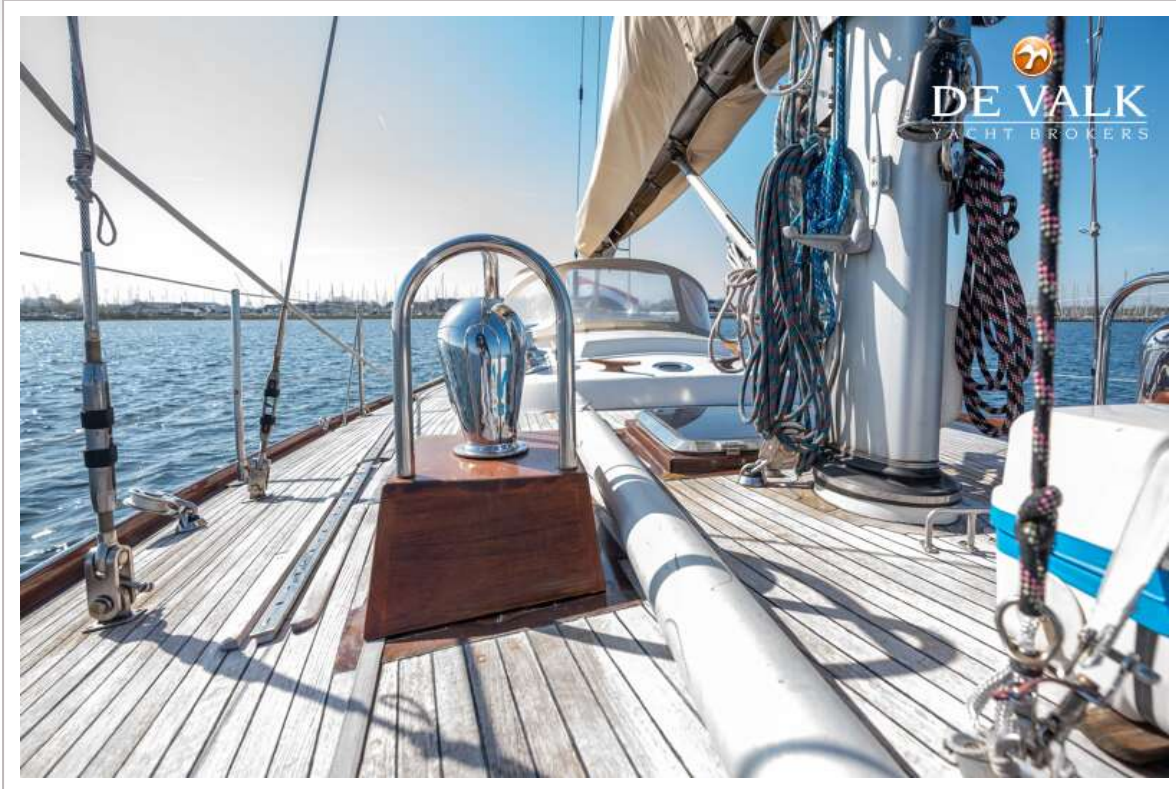
NAUTOR SWAN 43



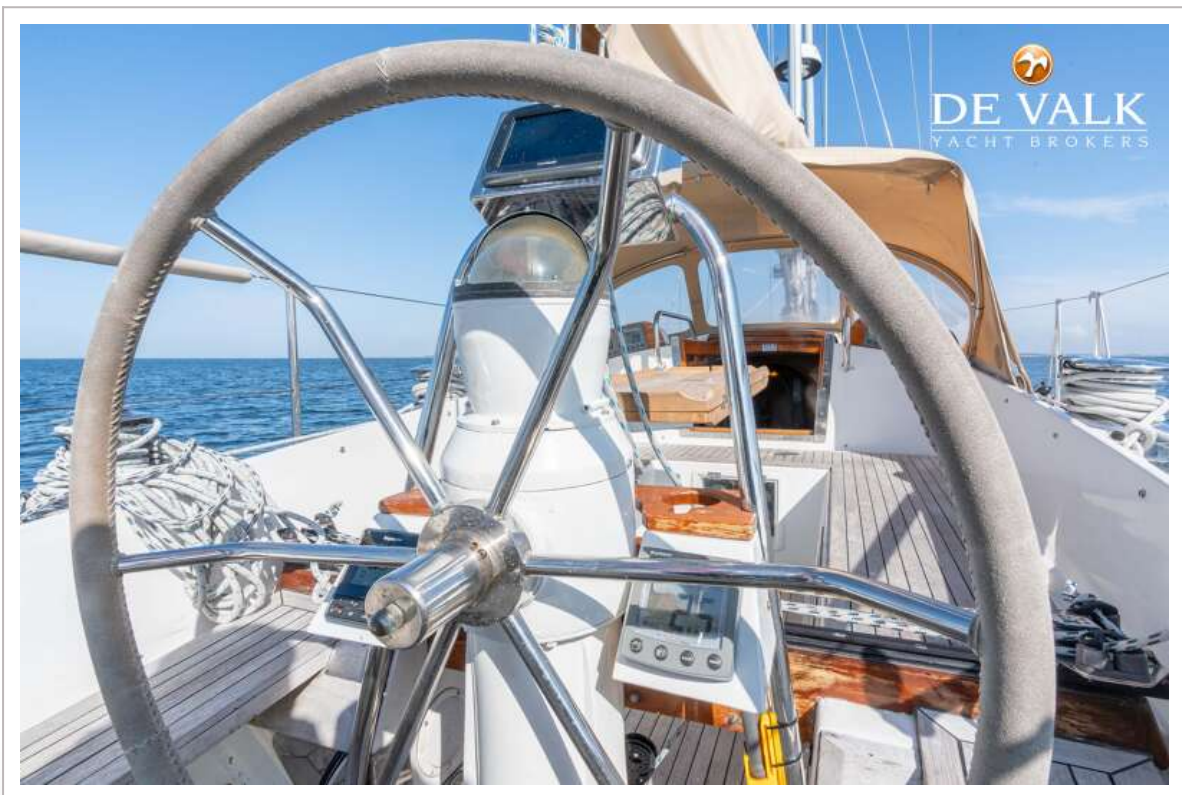
NAUTOR SWAN 43



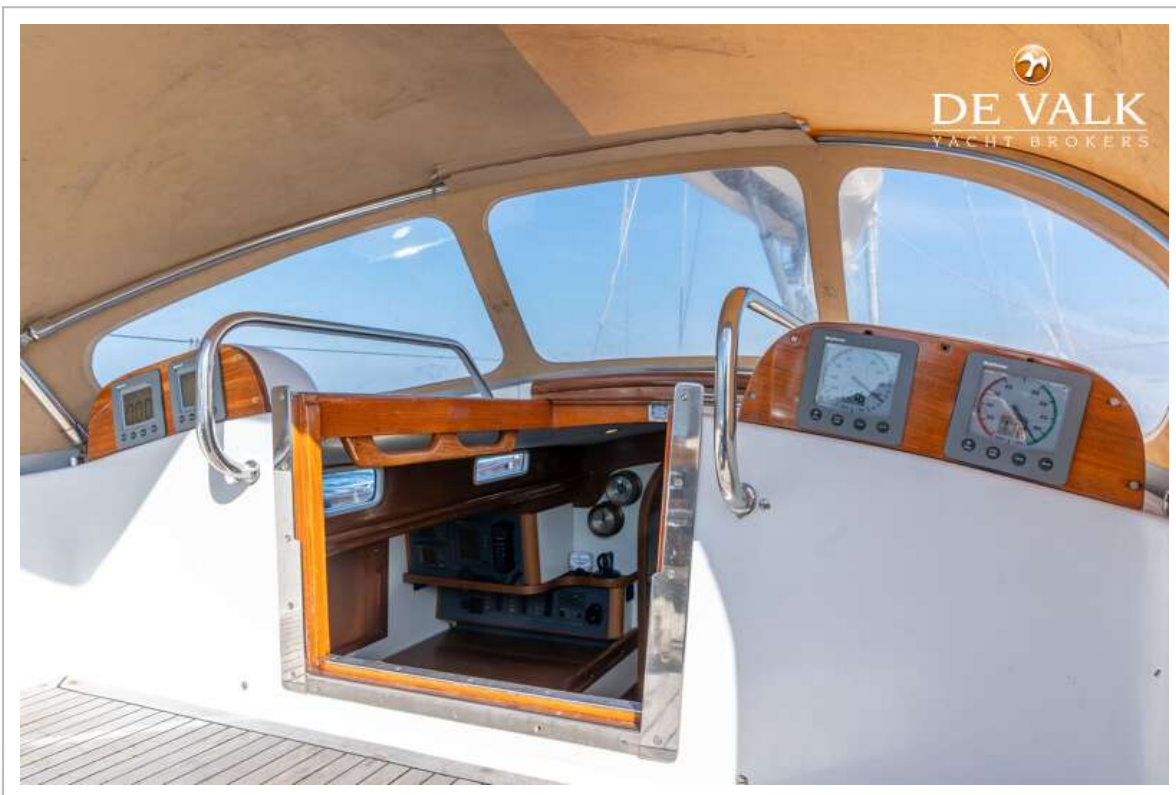
NAUTOR SWAN 43



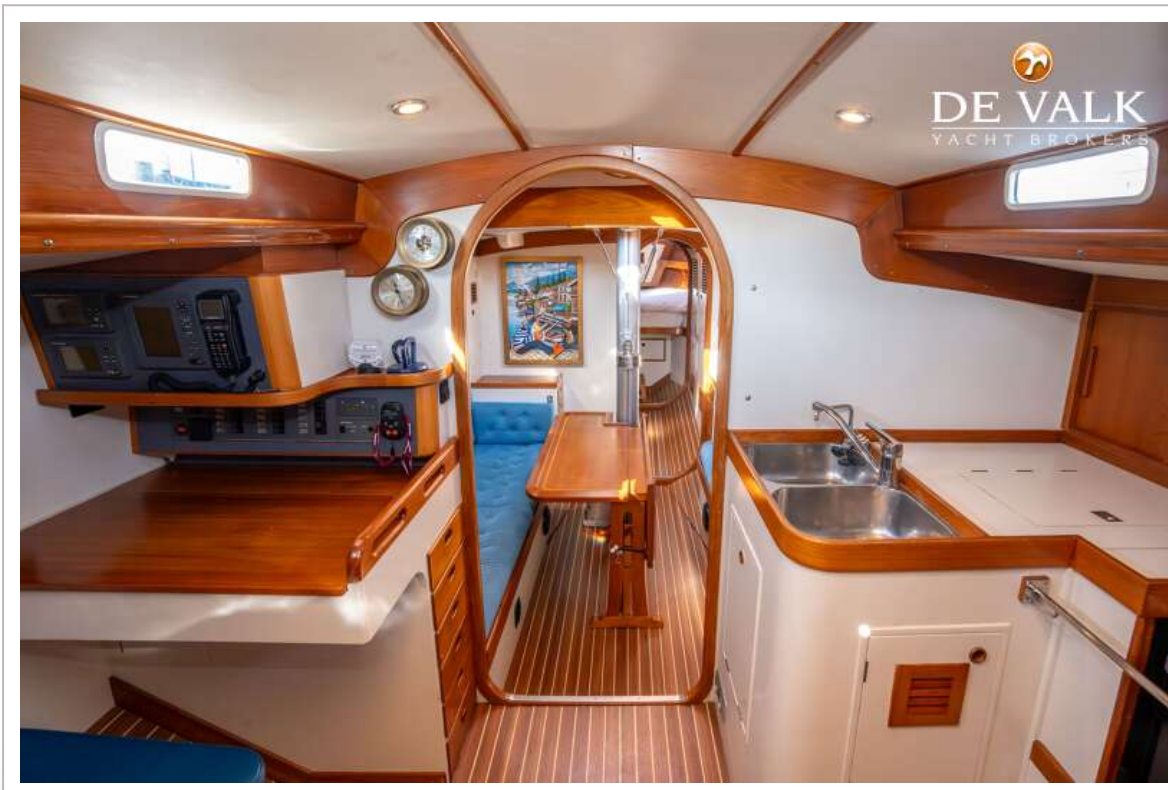
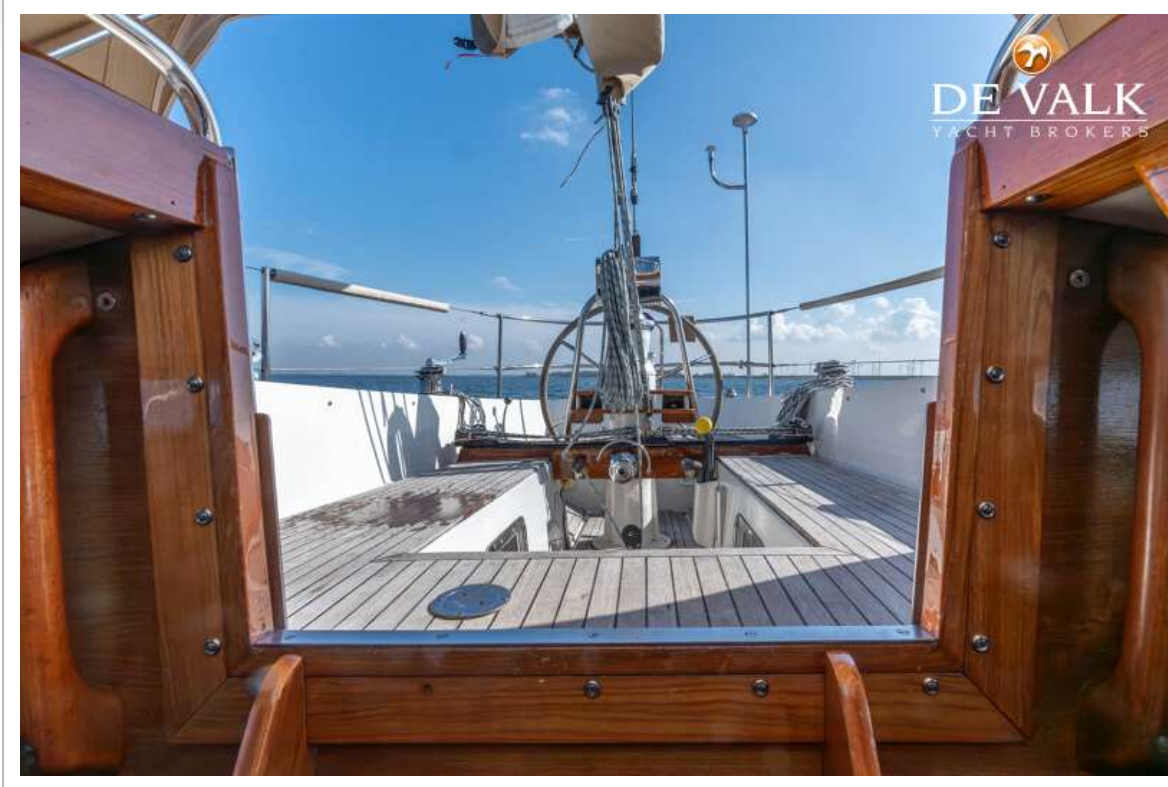
NAUTOR SWAN 43



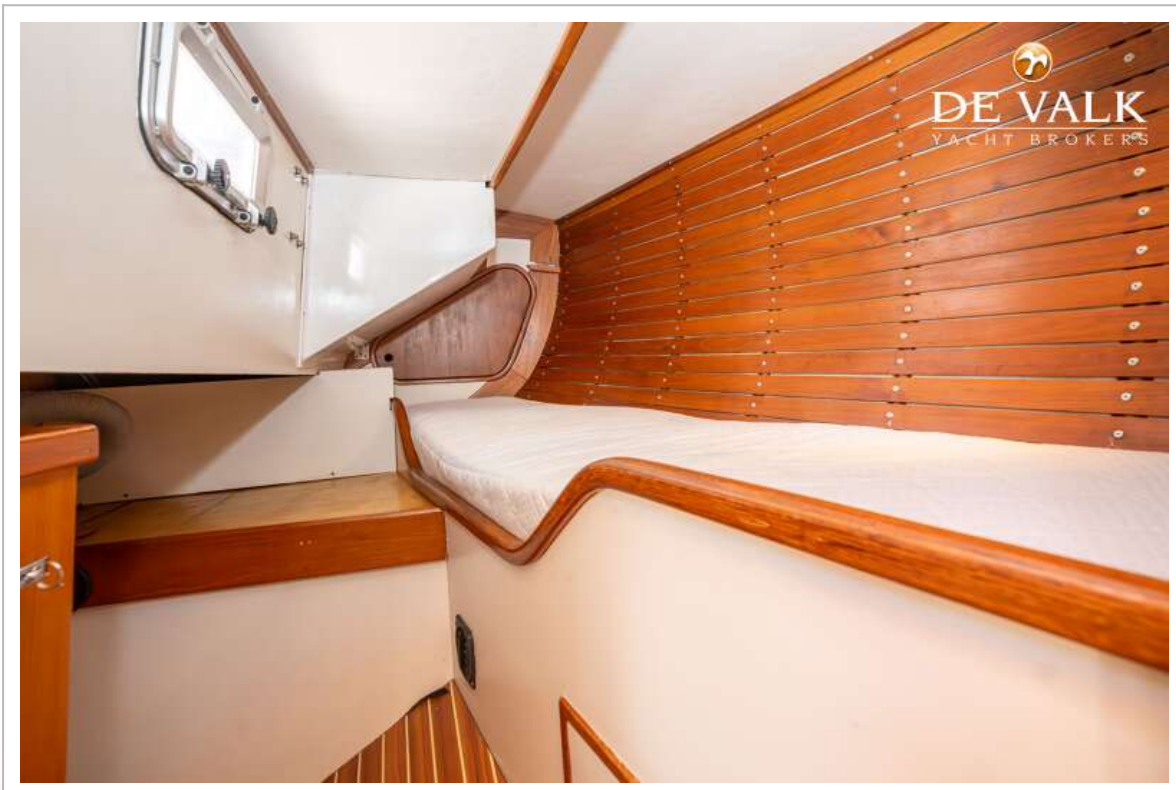
NAUTOR SWAN 43



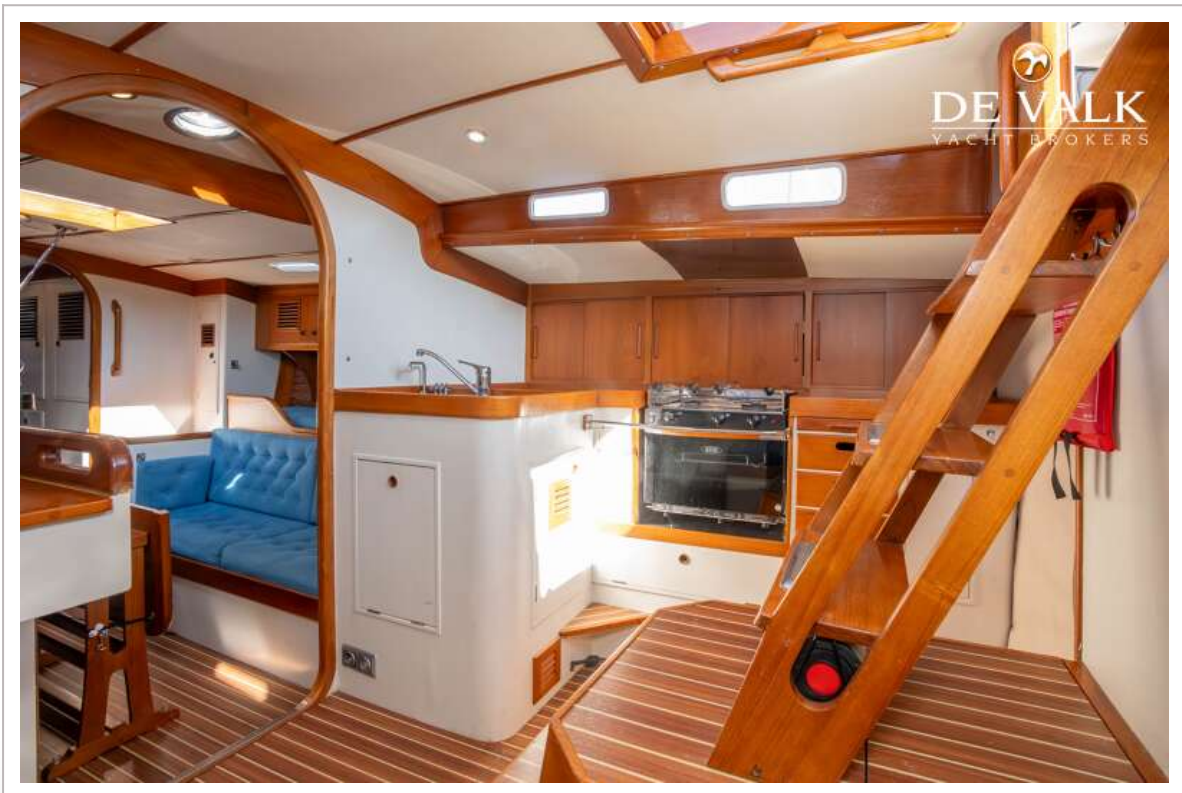
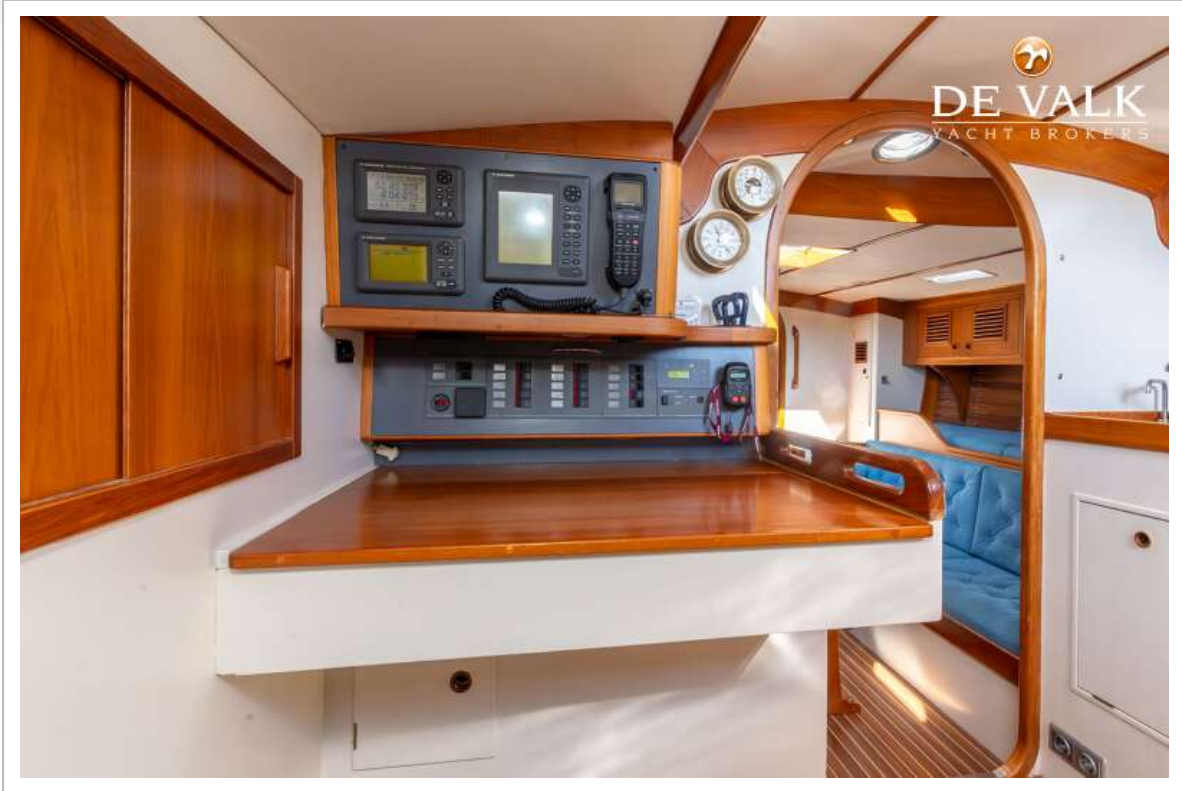
NAUTOR SWAN 43



NAUTOR SWAN 43



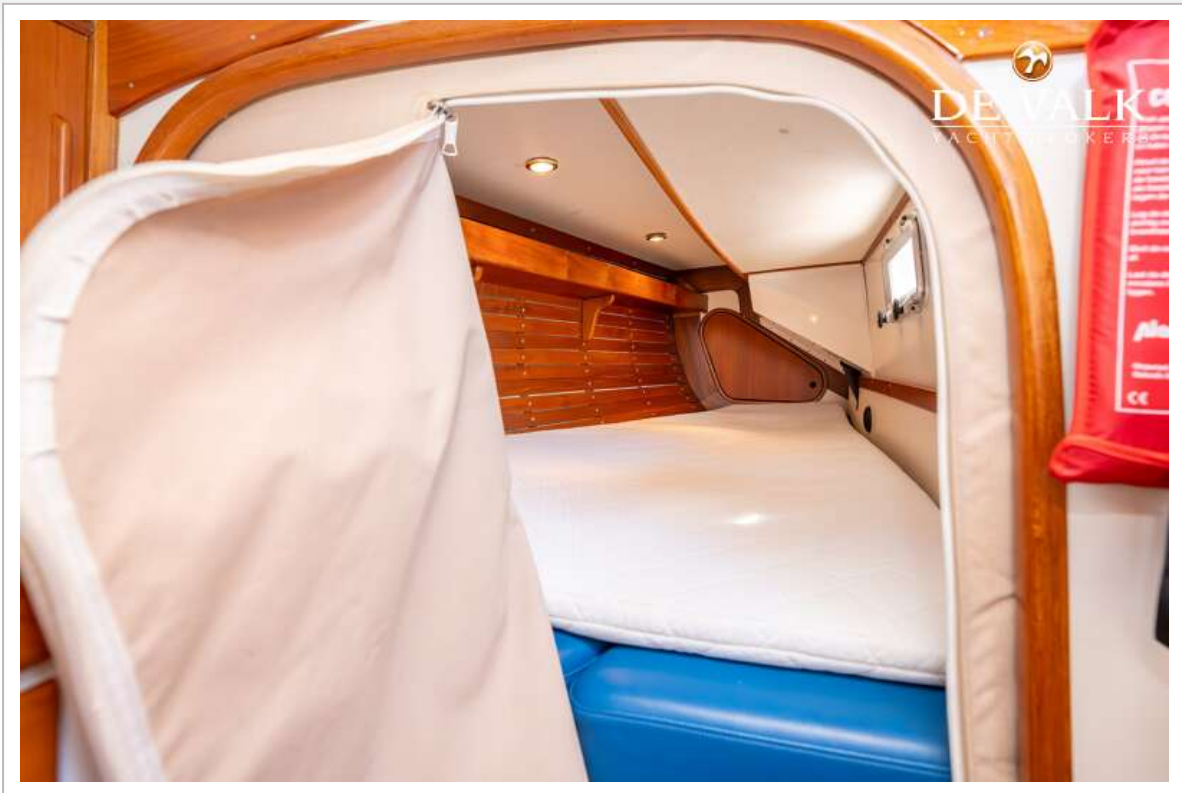
NAUTOR SWAN 43



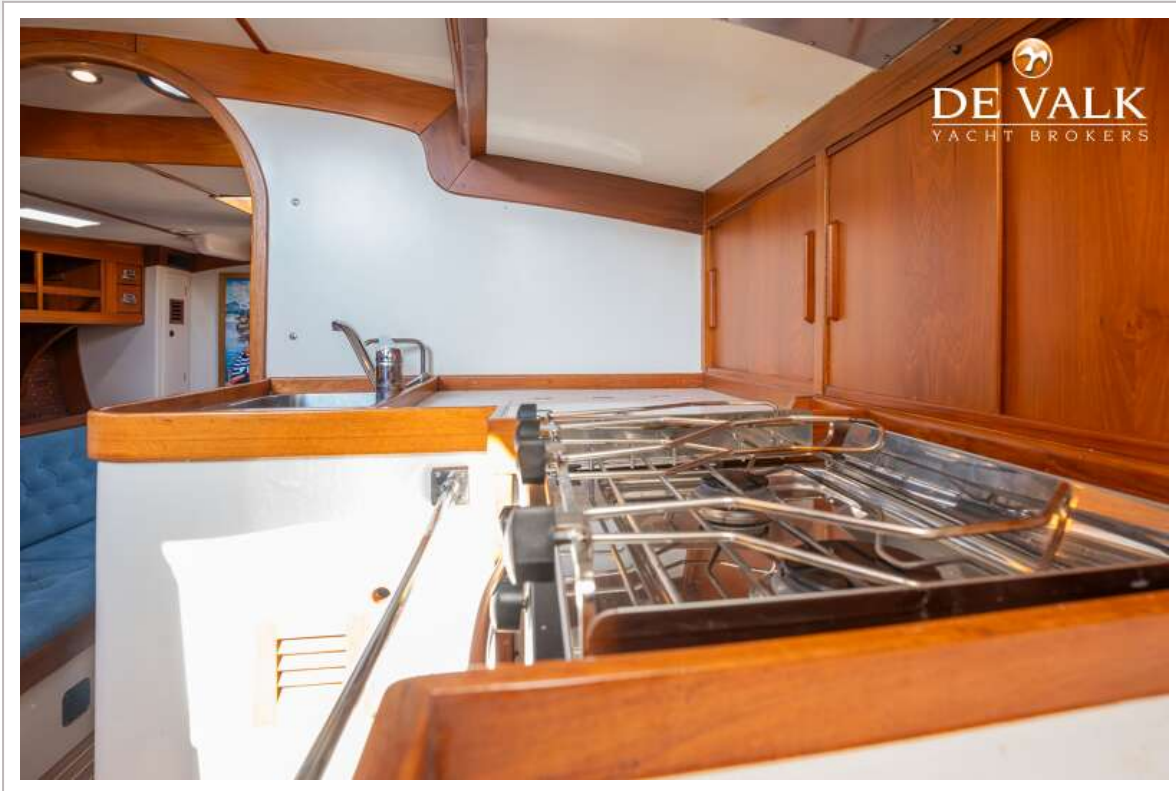
NAUTOR SWAN 43



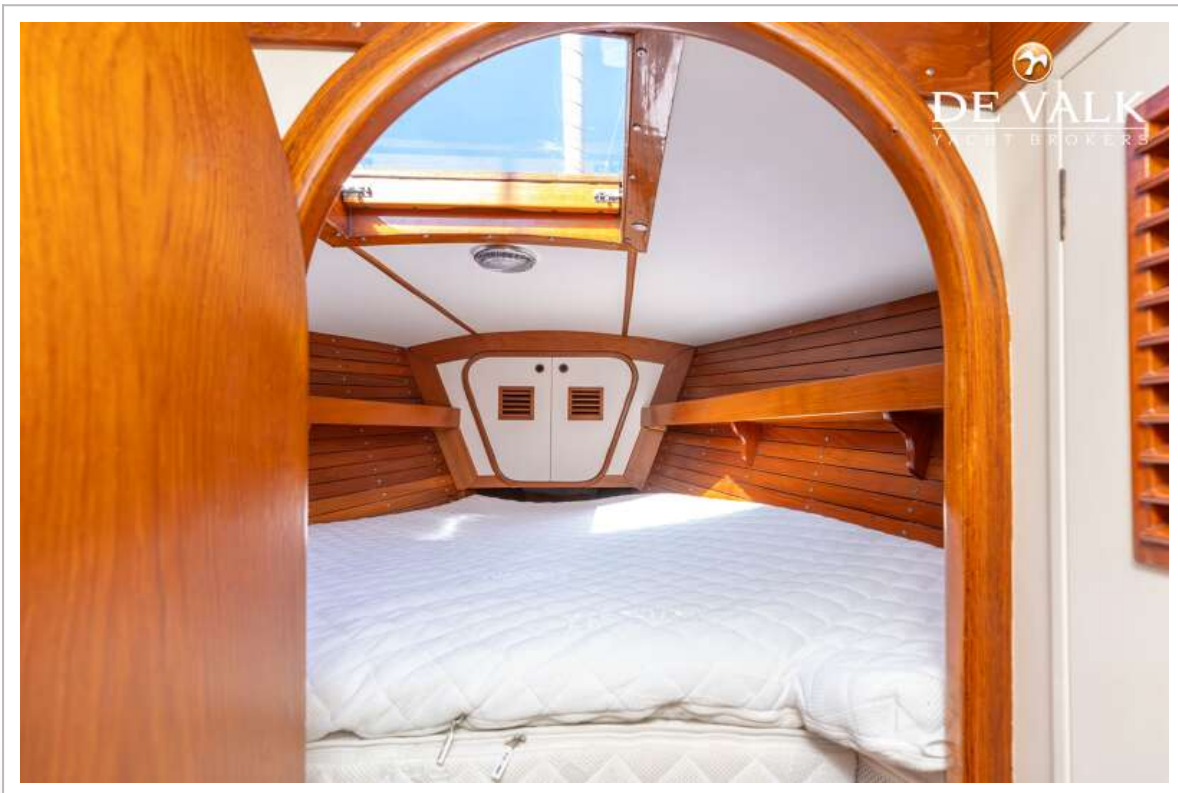
NAUTOR SWAN 43



NAUTOR SWAN 43



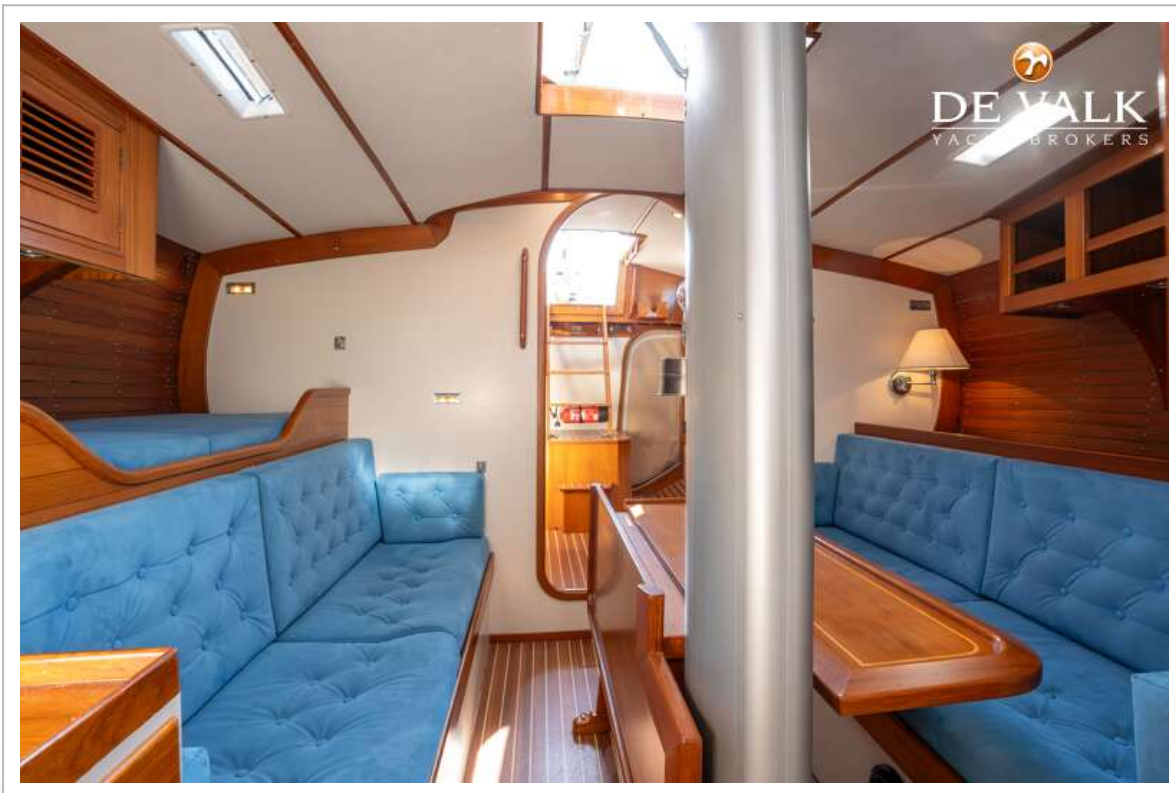
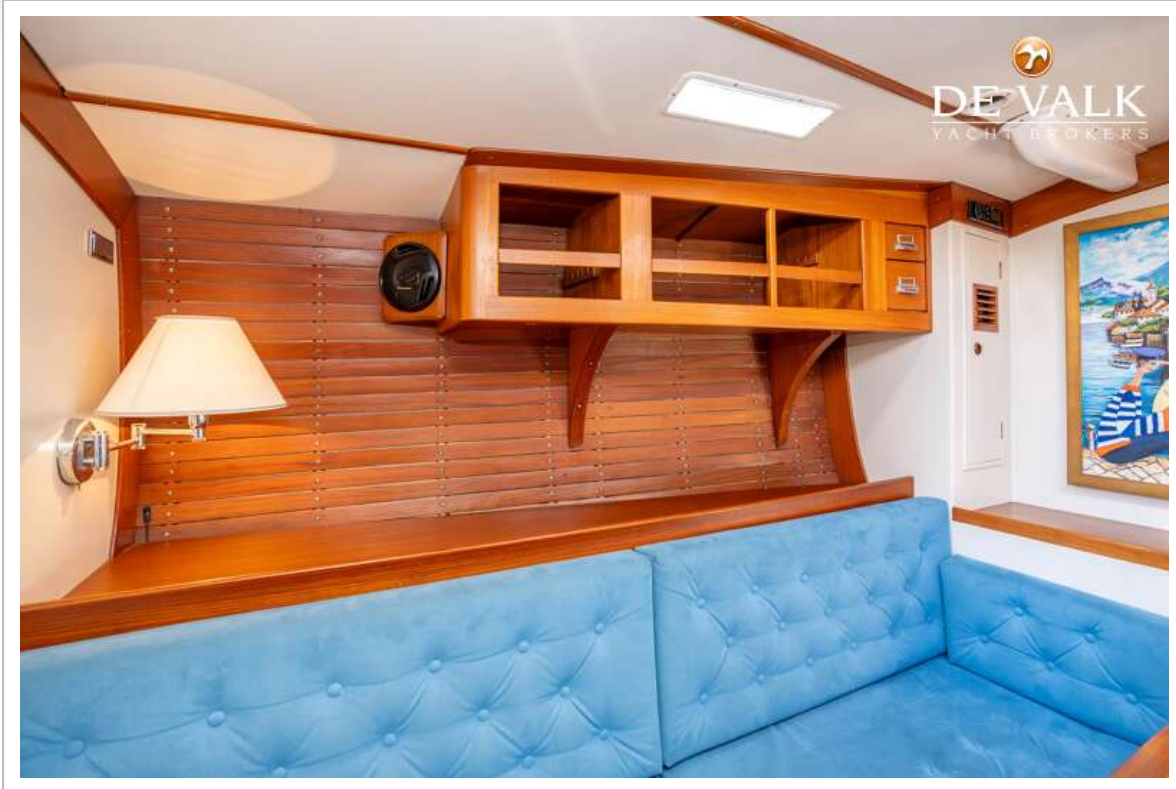
NAUTOR SWAN 43



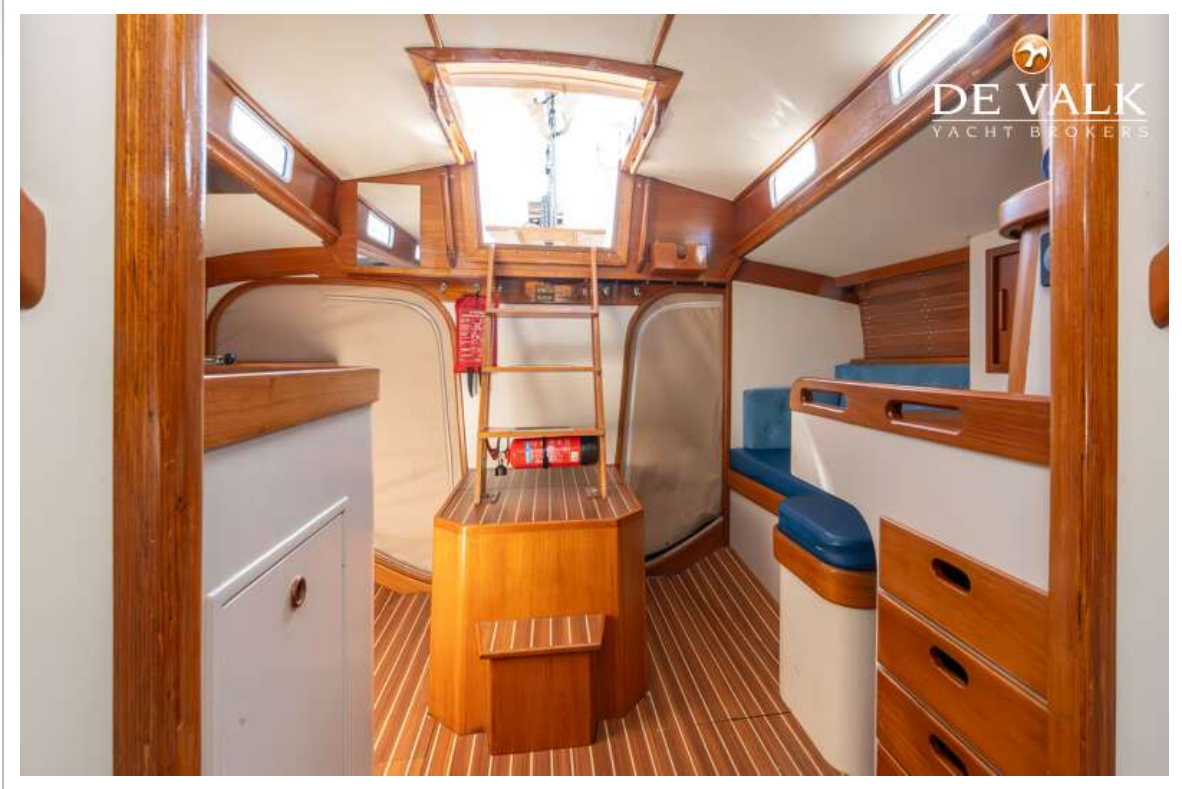
NAUTOR SWAN 43



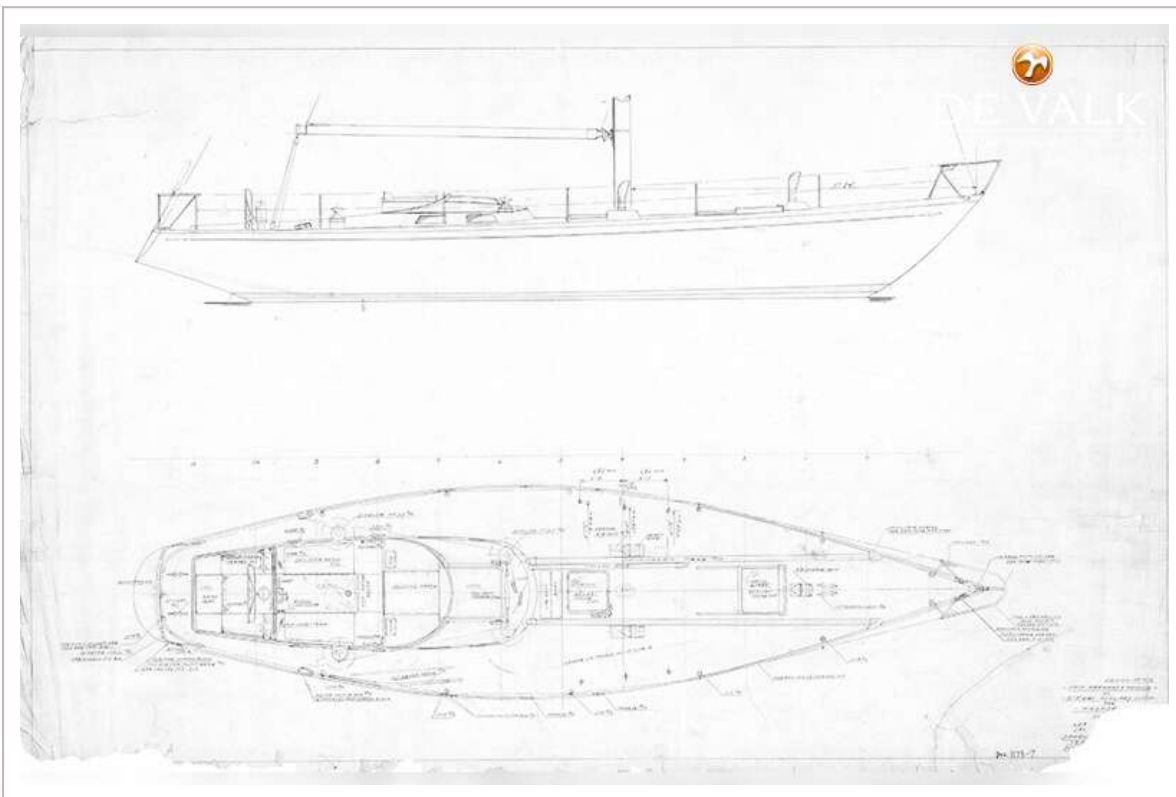
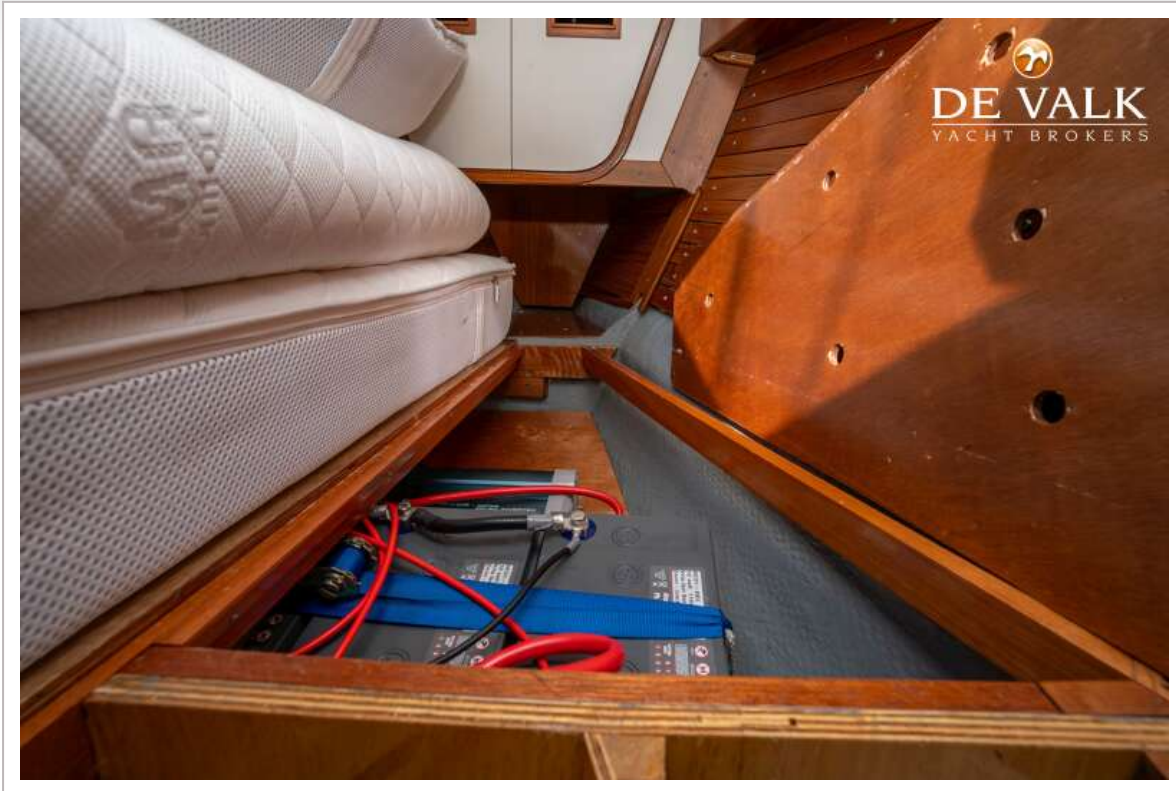
NAUTOR SWAN 43



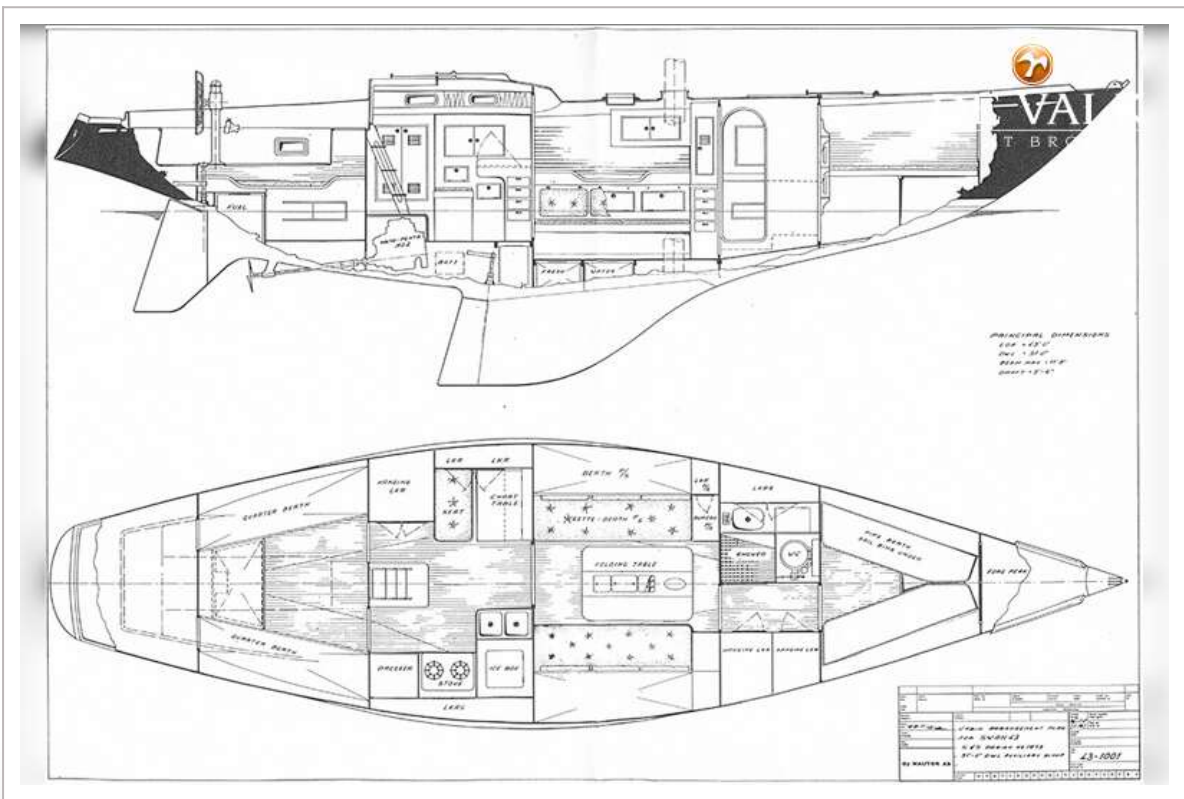
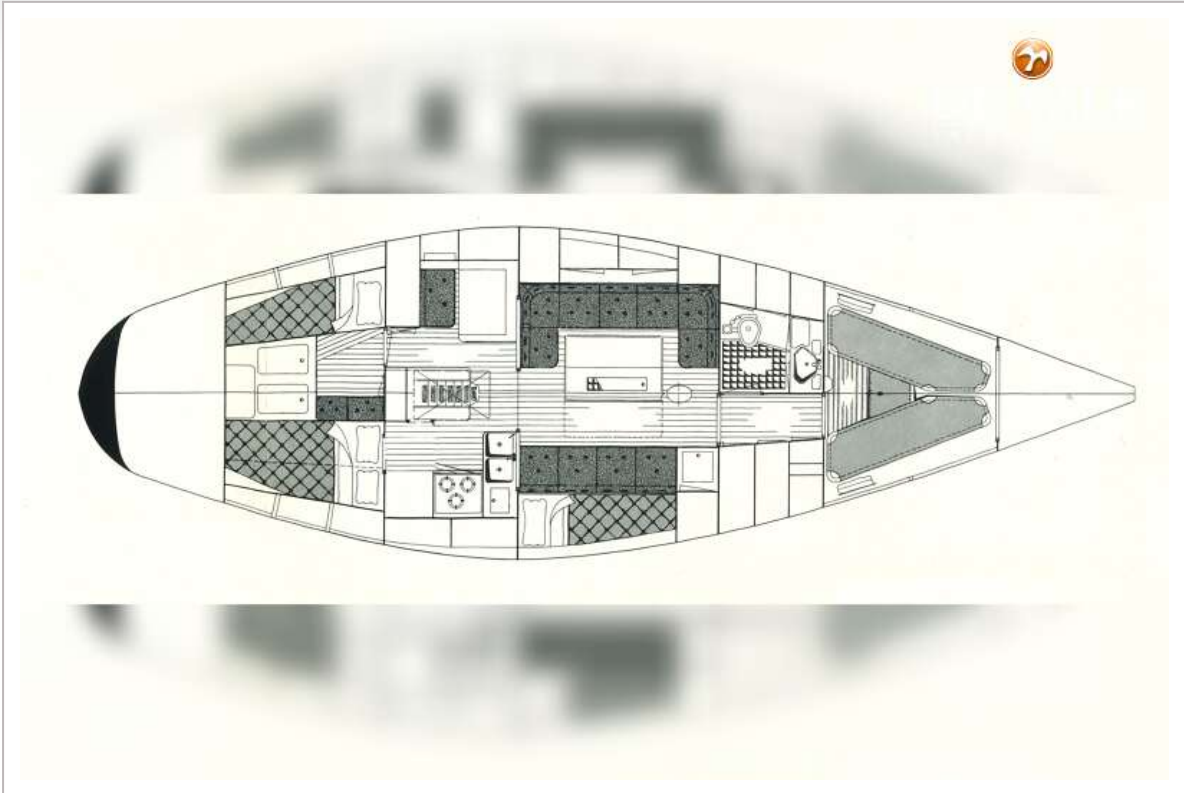
NAUTOR SWAN 43



NAUTOR SWAN 43



NAUTOR SWAN 43



NAUTOR SWAN 43

