



DE VALK  
YACHT BROKERS



## ROBERT CLARK 64 PILOTHOUSE



DE VALK  
YACHT BROKERS

# ROBERT CLARK 64 PILOTHOUSE

## BROKER'S COMMENTS

"This Robert Clark 64 is an unique classic and perfect maintained Blue Water Cruiser, which has been very good taken care of, with a great eye for details, by her current and previous owner. Their investments (a total EUR900,000 since 2005) reflects in an impressive list of completed projects. Only the classic line shows that she was built in the past. She offers a very nice saloon in the aft, 3 cabins and she is easy to sail with a small crew. The pilot house is a fantastic asset, both for watch keeping and enjoying the view. Contact our St Annaland office for an appointment on board in Spain."

*Jan-Ward van Dantzig*

## SPEZIFIKATIONEN

<b>Maße</b>	19,67 x 4,68 x 2,20 (m)	<b>Baumeister</b>	William King & Sons (in Essex)
<b>Baujahr</b>	1982	<b>Kabinen</b>	3
<b>Material</b>	Aluminium	<b>Schlafplätze</b>	8
<b>Motor(en)</b>	2 x Caterpillar 3056 TURBO diesel	<b>Pk/Kw</b>	2 x 125 (pk), 92 (kw)
<b>Angebotspreis</b>	EUR 425.000 (Mehrwertsteuer: bezahlt)	<b>Liegeplatz</b>	not at sales office

## KONTAKT

<b>Geschäftsstelle</b>	De Valk Sint Annaland	<b>Telefon.</b>	+31 166 601 000
<b>Adresse</b>	Koelhuisweg 4 4697 RM Sint Annaland The Netherlands	<b>Fax</b>	+31 (0)166 654 267
		<b>E-Mail -Adresse</b>	sintannaland@devalk.nl

## DISCLAIMER

Obwohl wir uns der Richtigkeit, Vollständigkeit und Aktualität unserer Informationen größte Sorgfalt widmen, können aus den Informationen keine Rechtsansprüche abgeleitet werden.



# ROBERT CLARK 64 PILOTHOUSE

## GENERAL

<b>Modell</b>	ROBERT CLARK 64 PILOTHOUSE
<b>Typ</b>	Segelyacht
<b>Rumpflänge (m)</b>	19,67
<b>Breite (m)</b>	4,68
<b>Tiefgang (m)</b>	2,20
<b>Durchfahrtshöhe (m)</b>	21,00
<b>Stehhöhe (m)</b>	2,05
<b>Baujahr</b>	1982
<b>Werft</b>	William King & Sons (in Essex)
<b>Land</b>	Vereinigtes Königreich
<b>Entwerfer</b>	Robert Clark
<b>Gewicht (t)</b>	33
<b>Ballast (Ton)</b>	Blei in Aluminium
<b>CE Norm</b>	NA
<b>Rumpfmateri al</b>	Aluminium
<b>Rumpffarbe</b>	Blau Flag blue AWL-GRIP spray-painted in 2005 - polished in 12/2023
<b>Haut-dicke Rumpf (mm)</b>	5.9 - 8.45
<b>Rumpfform</b>	S-Spant (semi)
<b>Art Kiel</b>	Langkieler (semi)
<b>Material Aufbauten</b>	Aluminium
<b>Stossliste</b>	Holz (teak)
<b>Deckmaterial</b>	Aluminium
<b>Deck Finish</b>	Antirutsch Farbe Grey
<b>Deck Finish Aufbauten</b>	Antirutsch Farbe Grey
<b>Pflicht Bedeckung</b>	Teak (on centre cockpit seats) and Grey non-skid paint
<b>Antifouling (Jahr)</b>	July 2023
<b>Dorado Belufter</b>	3 x
<b>Fenster Einfassung</b>	Aluminium
<b>Fenster Material</b>	Sicherheitsglas
<b>Decksluke</b>	7 x Goiot & 2 x Gebo (1998)



# ROBERT CLARK 64 PILOTHOUSE

<b>Bullauge</b>	Aluminium All round portholes re-painted in 12/2023
<b>Isolation</b>	Schaumplatten (2005)
<b>Treibstofftank (Liter)</b>	Aluminium 750
<b>Treibstofftank 2 (Liter)</b>	Aluminium 1050 (cleaned in 2020)
<b>Füllstandsanzeige (Treibstofftank)</b>	ja
<b>Trinkwassertank (Liter)</b>	Aluminium 1500 + 240 (cleaned in 2019, then continuously used + refilled)
<b>Füllstandsanzeige (Trinkwasser)</b>	ja
<b>Fäkaelien Tank (Liter)</b>	Aluminium 70 (cleaned in 2019 & electric Rheinstrom pump serviced in 2023)
<b>Füllstandsanzeige (Fakaelientank)</b>	with an alarm
<b>Fäkaelien Tankablauf</b>	Deck Verbindung + Pumpe Rheinstrom (electric)
<b>Grauwassertank (Liter)</b>	Aluminium Floater&electric pump&deck extraction(all new 2009-cleaned 2019)
<b>Radsteuerung</b>	hydraulik
<b>Innerhalb Steuerung</b>	Varnished teak wheel with Simrad RPU 3000 hydraulic pump (2005)
<b>Aussen Steuerung</b>	mechanisch Stainless steel steering wheel in the aft cockpit
<b>Not-Pinne</b>	ja
<b>Weitere Info Rumpf</b>	The old layers of antifouling have been removed from the underwater hull until the epoxy system, new layers of epoxy and new layer of antifouling applied (07/2023).
<b>Weitere Info Farbe und Anstrich</b>	Some spot-repairs on the hull and all round portholes in the hull have been repainted (12/2023). Afterwards the hull was professional polished and provided with an UV-protection wax (12/2023).
<b>Weitere Info</b>	Rudder on skeg (at the top and at the bottom)
<b>Weitere Info</b>	Rheinstrom waste water pump has been cleaned, serviced & provided with new bearings and new carbon brushes. Also all hoses from the waste water tank have been renewed (all in 08/2023).

## UNTERKUNFT

<b>Kabinen</b>	3
<b>Kojen</b>	8
<b>Innen</b>	Teak (80% new in 2009)
<b>Fussboden</b>	Teak und Holly (new in 2009)
<b>Ruderhaus</b>	Headroom : 1,86 m



# ROBERT CLARK 64 PILOTHOUSE

<b>Salon</b>	In the stern of the vessel - with green upholstery (new in 2020)
<b>Standhöhe Salon (m)</b>	1,90
<b>Heizung</b>	wasserheizung Kabola B-Tap (2005 - serviced in 2023 & 3x new radiator in 2020)
<b>Heizung 2</b>	Kaminofen Diesel
<b>Kartentisch</b>	On starboard side (in the pilothouse)
<b>Speisezimmer</b>	In the stern of the vessel
<b>Dinette zum umbauen</b>	ja
<b>Tür zum Cockpit</b>	From both the pilothouse and the saloon in the stern
<b>Kombüse</b>	In the stern of the vessel - Headroom: 1,90 m
<b>Arbeitsfläche</b>	Corian Anthracite (new in 2009)
<b>Spülbecken</b>	Edelstahl 2 x (new in 2009)
<b>Herd</b>	Gas 4 x burner (gimbaled)
<b>Ofen</b>	Cannon Filda Way grill / oven (on calor gas)
<b>Dunstabsauger</b>	(New installed in 2020)
<b>Mikrowelle/Backofen Kombi</b>	Sharp Express (microwave / grill / convection oven) 220 Volt
<b>Kühlschrank</b>	Isotherm fridge with two stainless steel drawers (2015)
<b>Gefriertruhe</b>	Isotherm freezer with two stainless steel drawers (2015)
<b>Warmwasser System</b>	220V Kabola B-Tap heater (2005) with hot water supply
<b>Wasserdruck System</b>	elektrisch Jabsco & 22 Litre Jabsco Accumulator tank (both new in 12/2023)
<b>Eignerkabine</b>	Doppelbett + Einzelbett In front cabin - Headroom: 1,80 - 1,90 m
<b>Länge Bett (m)</b>	2,03 x 1,40 (Port) & 2,05 x 0,80 (Starboard)
<b>Kleiderschrank</b>	hängend/Schublad/Regale (new in 2009)
<b>Badezimmer</b>	getrennt Headroom: 1,86 m (new in 2009)
<b>Toilet</b>	getrennt (flushes with sea water) - Headroom: 1,90 m
<b>Toilette System</b>	elektrisch Jabsco (new 11/2023) with grinder & Vacuum toilet lid (new 2020)
<b>Handwaschbecken</b>	im Badezimmer (new in 2009)
<b>Dusche</b>	gemeinsam (new in 2009)
<b>Weitere Info</b>	Port side mattresses renewed in 2020
<b>Gästekabine 1</b>	Stockbett Starboard side cabin - Headroom: 1,88 m
<b>Länge Bett (m)</b>	2,00 x 0,77



<b>Weitere Info</b>	Starboard mattresses new in 2009
<b>Gästekabine 2</b>	Stockbett Port side cabin - Headroom: 1,90 - 2,17 m
<b>Länge Bett (m)</b>	2,00 x 0,80
<b>Kleiderschrank</b>	Regale (new in 2009)
<b>Weitere Info</b>	Mattresses renewed in 2020
<b>Gästekabine 3</b>	Einzelbett In the passage from stern to bow - Headroom: 1,82 m
<b>Länge Bett (m)</b>	2,00 x 0,65
<b>Kleiderschrank</b>	Regale
<b>Weitere Info</b>	Mattress with a vapor-resistant layer (new in 2009)
<b>Weitere Info</b>	Amarflex (heat insulation) applied under the saloon sofa in 2020

## MOTOR(EN)

<b>Motoranzahl</b>	2
<b>Marke</b>	Caterpillar
<b>Typ</b>	3056 TURBO
<b>PS</b>	125
<b>kW</b>	92
<b>Kraftstoffart</b>	Diesel
<b>Installiert im Jahr</b>	2006
<b>Höchstgeschwindigkeit (Kn)</b>	9
<b>Marschgeschwindigkeit (Kn)</b>	8
<b>Verbrauch (l/h)</b>	5
<b>Motorstunden</b>	1000
<b>Kühlungssystem Motor</b>	indirekte Wärmetauscher
<b>Antrieb</b>	Schraubenwelle
<b>Welle Dichtung</b>	Port side : new in 2023 & Starboard side : new in 2020
<b>Motor bedienung</b>	elektrisch
<b>Gewende getriebe</b>	hydraulic
<b>Exhaust</b>	wassergekühlt
<b>Wellen Drucklager</b>	ja
<b>Propeller Typ</b>	falt 2 x Vari-prop (2005 - serviced & readjusted in 07/2023)



# ROBERT CLARK 64 PILOTHOUSE

<b>Propellerblätter</b>	4
<b>Material Propellerwelle</b>	Edelstahl
<b>Propellerwelle schmierung</b>	Wasser 2 x Volvo Seal -> Port : new in 2023 & Starboard : new in 2020
<b>Hand Bilgenpumpe</b>	1 x
<b>Elektrische Bilgenpumpe</b>	4 x electric/automatic & 2 x electric
<b>Bilge Alarm</b>	ja
<b>Elektrische Anlage</b>	12 & 24 & 220 Volt
<b>Generator</b>	leise Separator Mastervolt Whisper M-SC8 (new in 2007)
<b>Betriebsstunden Generator</b>	130
<b>Batterien</b>	2x 140 Ah spare battery - 24 Volt for emergency
<b>Starterbatterie</b>	4 x 50 Ah Optima Red Top - 24 Volt (new in 2019)
<b>Versorgungsbatterie</b>	12 x 2 V 630 AH (new in 11/2022 - in function since 07/2023)
<b>Generatorbatterie</b>	1x 60 Ah Napa - 12 V (new in 08/2023)
<b>Batterie Monitor</b>	Mastervolt Charger Control & Link 10 Battery Condition meter
<b>Batterie Ladegerat</b>	2 x Mastervolt Mass 24V/100A & 1 x 24V/25A (all new in 2007)
<b>Umwandler</b>	Mastervolt Mass Sine 24V/2500W (new in 2007)
<b>Dioden-Batterie-Koppler</b>	(new in 2022)
<b>Landstrom</b>	mit Kabel
<b>Trenn transformator</b>	ja
<b>Wasserbereiter</b>	Spectra Watermaker MPC-3000 (2007 - never used)
<b>Weitere Info</b>	Headroom engine room : 1,05 m & at work bench : 1,45 - 1,77 m
<b>Weitere Info</b>	Mastervolt IVO Smart (2007)
<b>Weitere Info</b>	There is a leak voltage gauge connected to the hull

## NAVIGATION

<b>Kompass</b>	1x Simrad IS15 (2009) & 1x Silva in aft cockpit (new in 2023)
<b>Elektrisches Kompass</b>	Danforth electric compass (2009) in the deck house
<b>Tiefenanziege</b>	Simrad IS15 Depht Multi (2009)
<b>Logge</b>	Simrad IS15 Speed Multi (2009)
<b>Windlupe anzeige</b>	Simrad IS15 Wind Multi (2009)



<b>Tochter anzeige</b>	Simrad IS15 (2009)
<b>UKW</b>	Icom IC-M501 VHF with Mic (new in 07/2023)
<b>Portabel UKW</b>	1x Icom BC-166 handheld VHF (2009)
<b>Autopilot</b>	Simrad Robertson AP22 with hydraulic Simrad RPU3000 pump (2009)
<b>Ruderwinkel Anzeige</b>	Simrad IS15 rudder indicator (2009)
<b>Radar</b>	Furuno NXT radar antenna on starboard side in mizzen mast (2020)
<b>Radar/GPS/Plotter</b>	Furuno NXT (new in 2020)
<b>Navtex</b>	Furuno NX-300 Navtex
<b>PC Anschluss</b>	ja
<b>WIFI Antenne</b>	ja
<b>Elektronische Kart(en)</b>	ja
<b>AIS Transceiver</b>	ja
<b>Radio Empfänger</b>	Furuno SSB Transceiver FS-1562-15
<b>Sender Vorrichtung</b>	with Furuno Antenna Coupler&Intellian Satellite receiver (Tuner)
<b>Epirb</b>	ja
<b>Navigation Beleuchtung</b>	LED (new LEPO LED 3 colour mast head light in 2019)
<b>Suchscheinwerfer</b>	ja
<b>Weitere Info</b>	Isolated backstay in use as antenna for SSB

## AUSRÜSTUNG

<b>Sonnenschirm</b>	ja
<b>Fensterabdeckung</b>	(on the inside of the windows)
<b>Badeleiter</b>	Aluminium
<b>Gangway</b>	Folding aluminium with teak grating
<b>Anker</b>	Bruce
<b>Ankerkette</b>	approx. 50 m galvanised chain
<b>Ankerwinde</b>	elektrisch Maxwell (New in 2009) with up-down buttons on the bow
<b>Gangspill</b>	On the windlass
<b>Deckwasche</b>	Connection in the cockpit
<b>See Reling</b>	Draht/Seil Double stainless steel wire (90 cm high stantions)





<b>Zupackenschiene (aufbauten)</b>	Teak
<b>Seiten-Einstieg Seereling</b>	On both sides
<b>Heckkorb</b>	Stainless steel
<b>Bugkorb</b>	Stainless steel
<b>Rettungsinsel</b>	Container Lalizas Iso-Raft (New in 2019)
<b>Rettungsinsel (Pers)</b>	8
<b>Letzte Wartung Rettungsinsel</b>	2023
<b>Schwimvesten</b>	4 x automatic (surveyed in 07/2023)
<b>Rettungsboje</b>	ja
<b>Markierboje</b>	ja
<b>Sicherheitsleine auf Deck</b>	ja
<b>Scheibenwischer</b>	ja
<b>Horn</b>	Luftdruck
<b>Radar Reflektor</b>	Echomax (in the masthead of the main mast)
<b>Fenderkissen</b>	ja
<b>Festmacher</b>	ja
<b>Reserve Teilen</b>	ja
<b>TV</b>	Samsung (new in 2009)
<b>Satellit</b>	Intellian satelite receiver with Tuner
<b>Uhr - Barometer</b>	Clock, Barometer and a Barograph
<b>Feuerloscher</b>	(New in 2020)
<b>Letzte Wartung Feuerloscher</b>	07/2023
<b>Feuerloscher in Maschine Raum</b>	ja

## TAKELWERK

<b>Rig</b>	Ketsch-Kutter
<b>Stehendes Gut</b>	Rod New in 2021
<b>Marke Mast</b>	Seldén New in 2009
<b>Material Mast</b>	Aluminium behandelt Flag Blue sprayed (2009)
<b>Salings</b>	Flag Blue sprayed (2009) open spreaders (2x2 main & 1x2 mizzen)



<b>Großsegel-Persenning</b>	Blue with Lazy-Jacks. New topping on cover applied (12/2023)
<b>Latten traveller</b>	On both masts
<b>Durchelatted großsegel</b>	De Vries: Offshore Cruiser Dacron (2009 - serviced in 2021)
<b>Besan</b>	De Vries: Full Batten Offshore Cruiser Dacron(2009-serviced 2021)
<b>Besansegel-Persenning</b>	Blue with Lazy-Jacks. New topping on cover applied (12/2023)
<b>Genua</b>	De Vries: Offshore Cruiser Dacron (2009 - serviced in 2021)
<b>Rollreffanlage</b>	Electric Bamar Magic MEJ1.02 (new 2009/serviced&new engine 2023)
<b>Kutter Rollreffanlage</b>	Electric Bamar Magic MEJ1.02 (new in 2009 / serviced in 2023)
<b>Gennaker</b>	1x (190m2)
<b>Spi</b>	1 x Light Weather & 1 x Allround (202m2)
<b>Großer Klüver</b>	De Vries: Laminate DCX Furling Yankee (2009 - serviced in 2021)
<b>Abnehmbare Inner Vorderstag</b>	Removable Kevlar stay (new in 2009) for Storm Jib
<b>Sturmfock</b>	Offshore Dacron Storm Jib (on removable Kevlar stay)
<b>Reff Vorrichtung</b>	Schnell-1-Lein-Reffsystem
<b>Achterstag Spanner</b>	hydraulik Holmatro HIA 48-22S (new in 2007 - overhauled in 2021)
<b>Baumniederholer</b>	Gasdruckfeder 2 x Flag Blue sprayed Rodkicker (2009)
<b>Primare Schot Winschen</b>	2 x Andersen 46ST (manual - 2009)
<b>Sekundaire Schot Winschen</b>	2 x Andersen 46ST (electric 1-speed - 2009)
<b>Genua Schotwischen</b>	2 x Andersen 68ST (electric 2-speed - 2009)
<b>Fall Winschen</b>	2 x Lewmar 48ST (manual - 2009)
<b>Reff Wunsch</b>	2 x Lewmar 28ST (manual)
<b>Multifunktional Winschen</b>	3 x Lewmar 40ST (manual - 2009) & 2 x Lewmar 28ST (manual)
<b>Wunsch Schonbezug</b>	ja
<b>Spi-Baum</b>	Kohlenstoff Hall - Flag Blue sprayed (2009) - hanging on front side mast
<b>Isolierte Heckstag</b>	(New in 2021)
<b>Weitere Info</b>	Ronstan & Harken deck gear (blocks & rails) & Spinlock jammers (New in 2009)
<b>Weitere Info</b>	2x Antal rails with jammers on the main mast (for the Yankee & Genoa halyards "à€" meaning that after setting these sails, the hoisting parts of the halyards can be removed from the masts and stored inside) - All New in 2009





# ROBERT CLARK 64 PILOTHOUSE





# ROBERT CLARK 64 PILOTHOUSE



# ROBERT CLARK 64 PILOTHOUSE





# ROBERT CLARK 64 PILOTHOUSE



# ROBERT CLARK 64 PILOTHOUSE



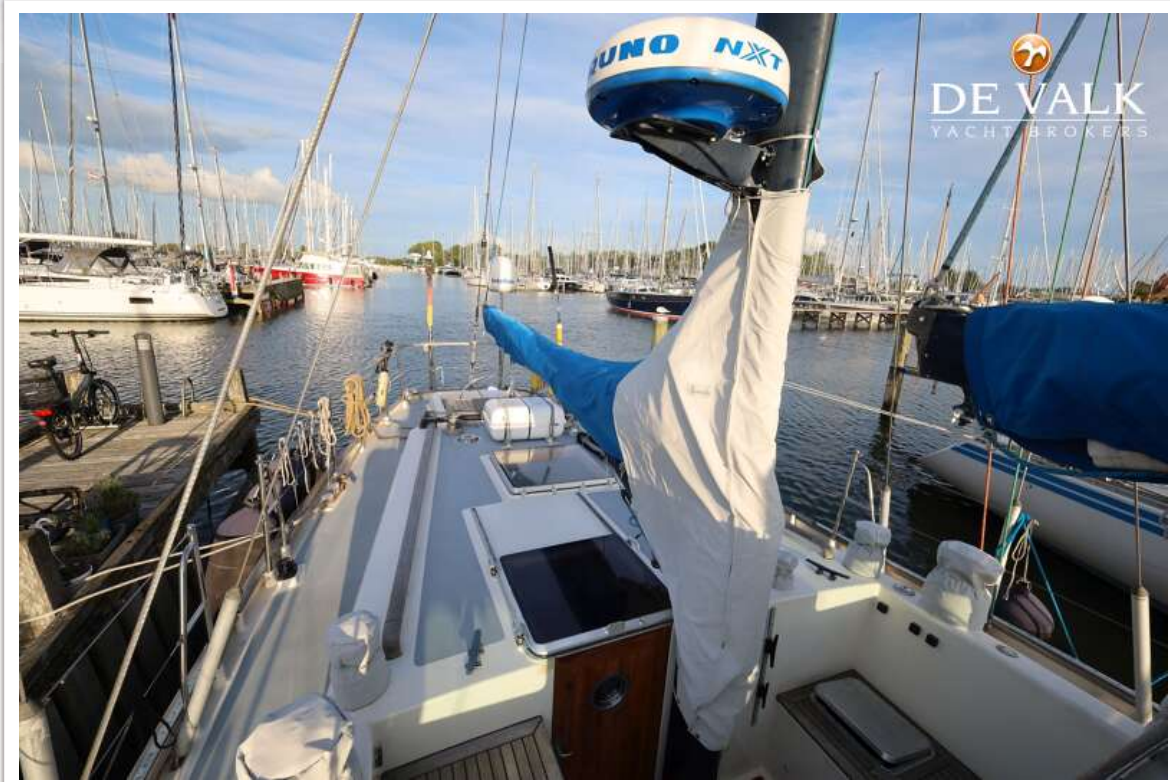


# ROBERT CLARK 64 PILOTHOUSE





# ROBERT CLARK 64 PILOTHOUSE



# ROBERT CLARK 64 PILOTHOUSE





# ROBERT CLARK 64 PILOTHOUSE



# ROBERT CLARK 64 PILOTHOUSE

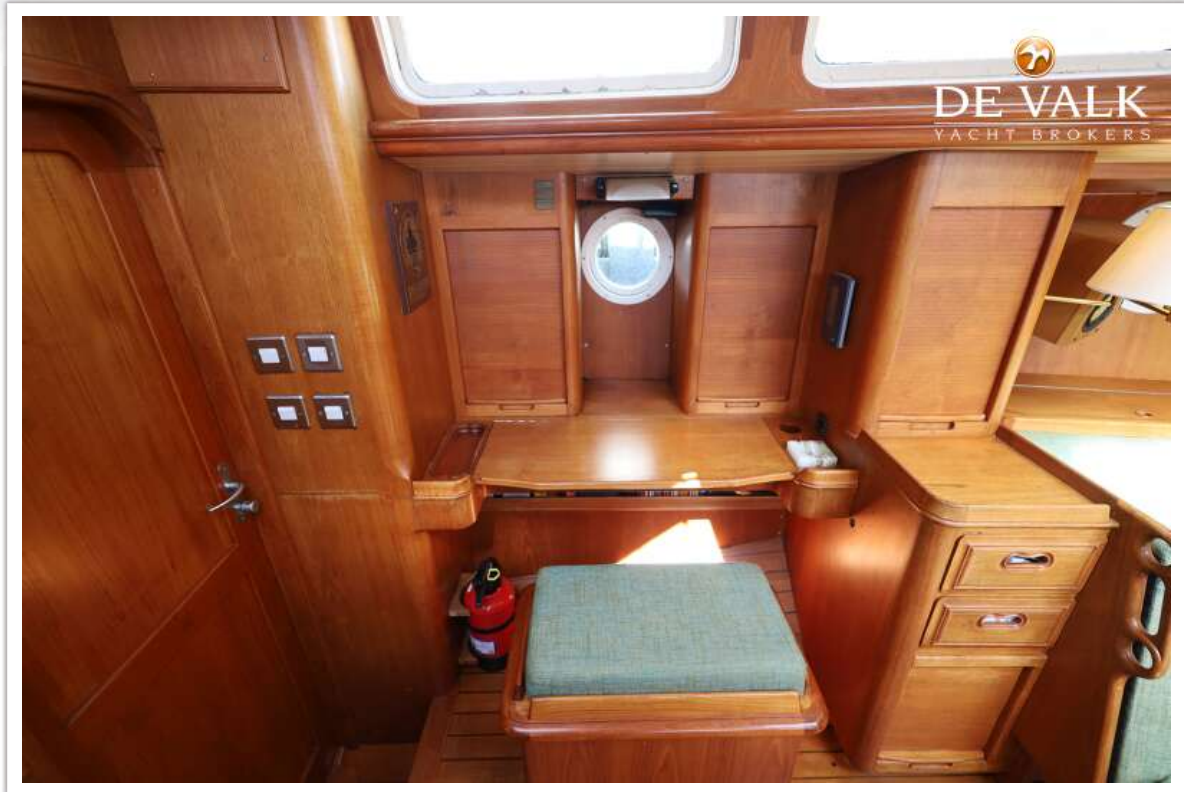




# ROBERT CLARK 64 PILOTHOUSE

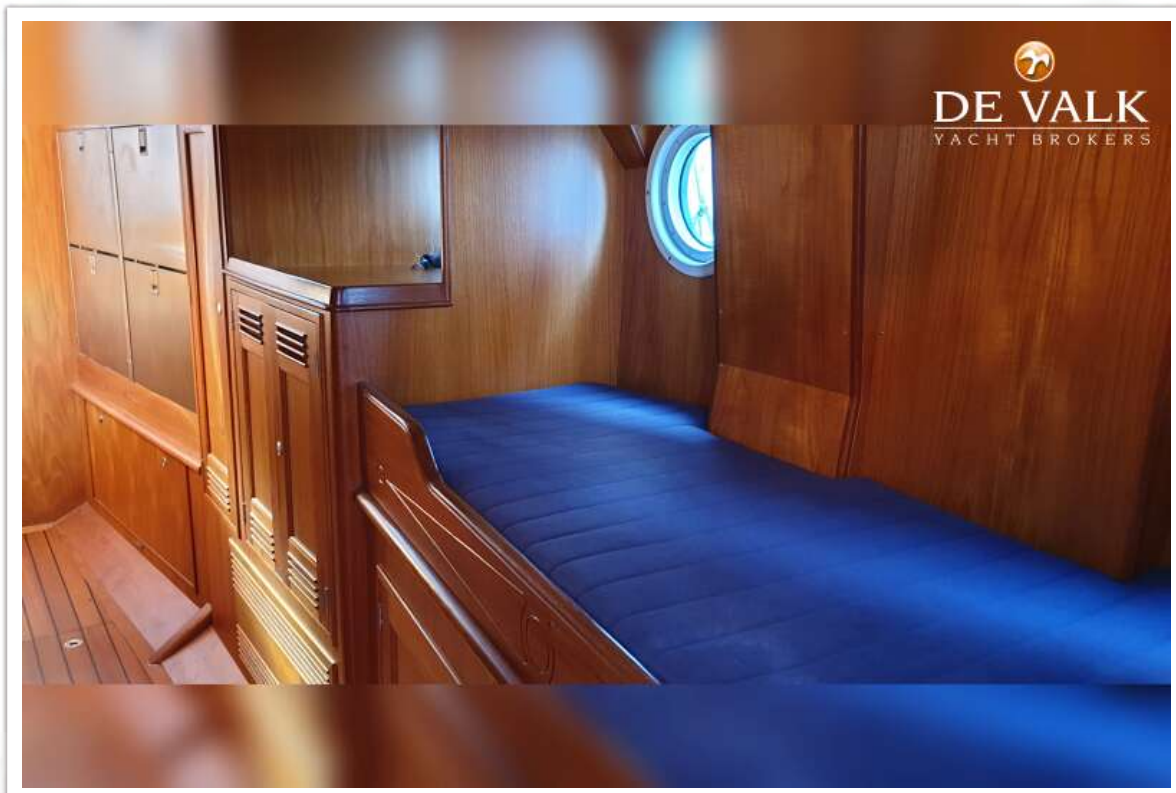


# ROBERT CLARK 64 PILOTHOUSE





# ROBERT CLARK 64 PILOTHOUSE

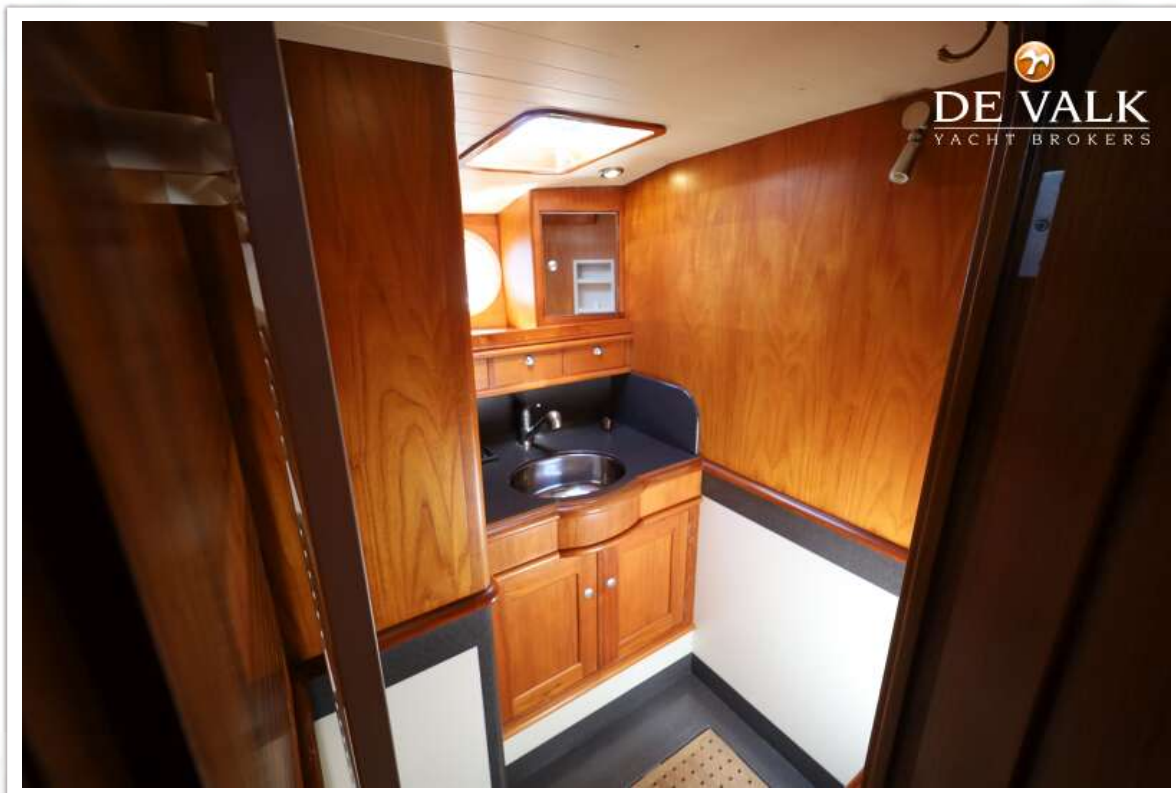
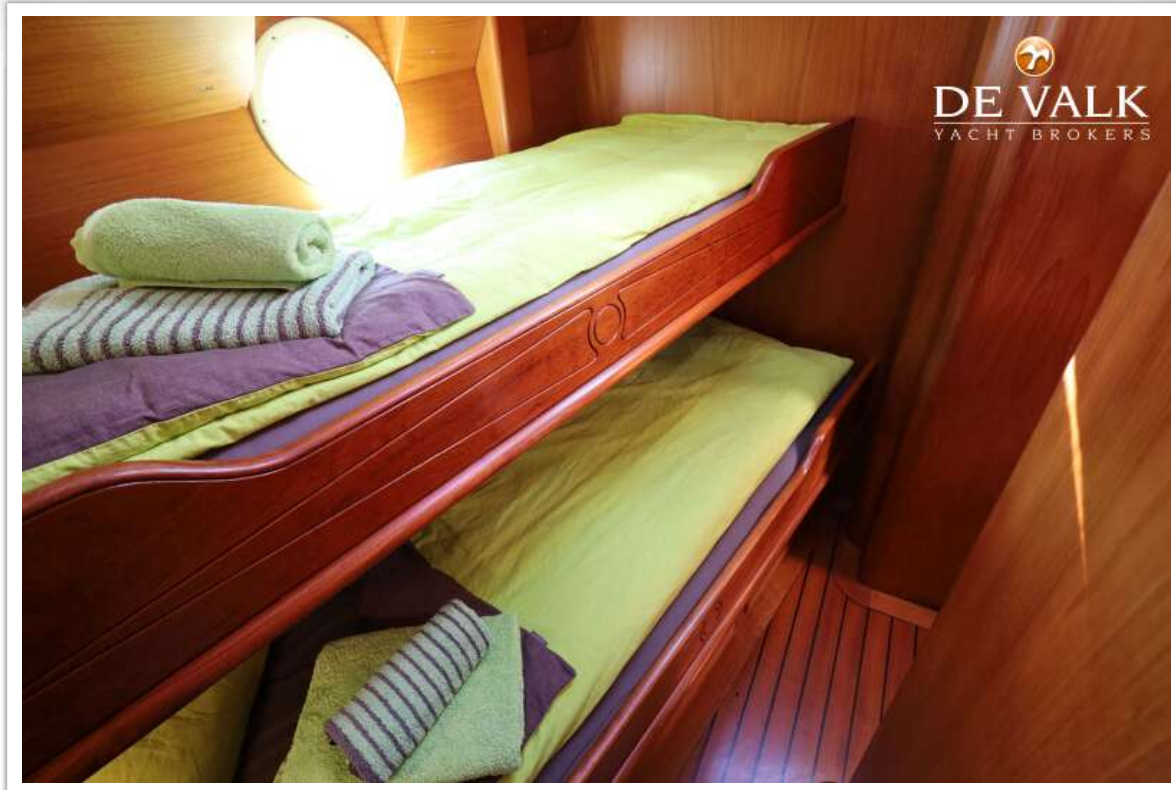




# ROBERT CLARK 64 PILOTHOUSE

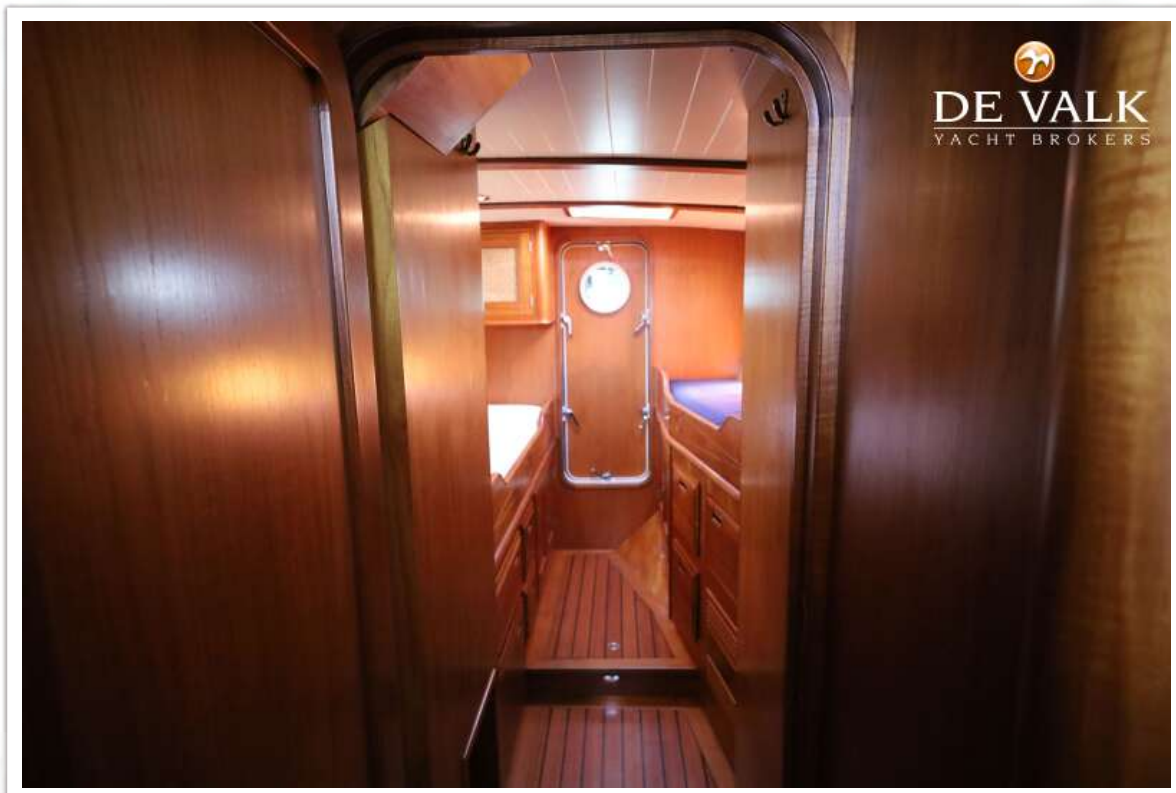
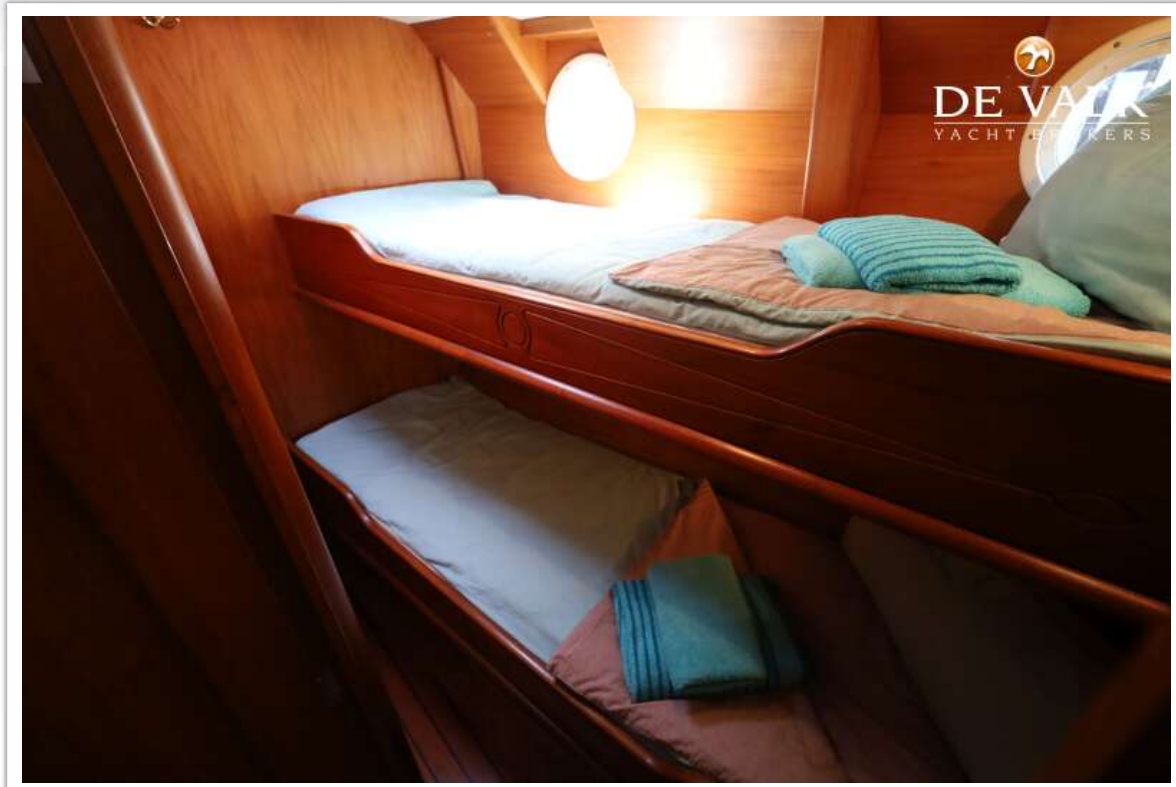


# ROBERT CLARK 64 PILOTHOUSE

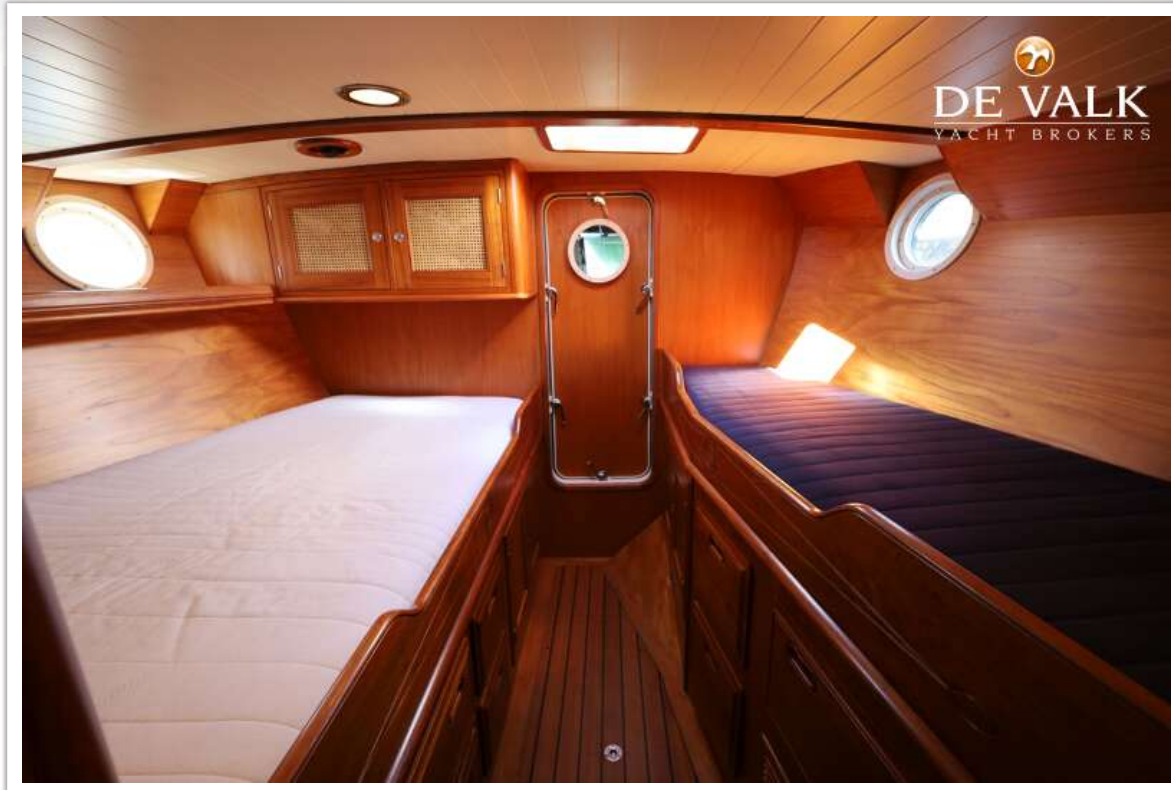




# ROBERT CLARK 64 PILOTHOUSE

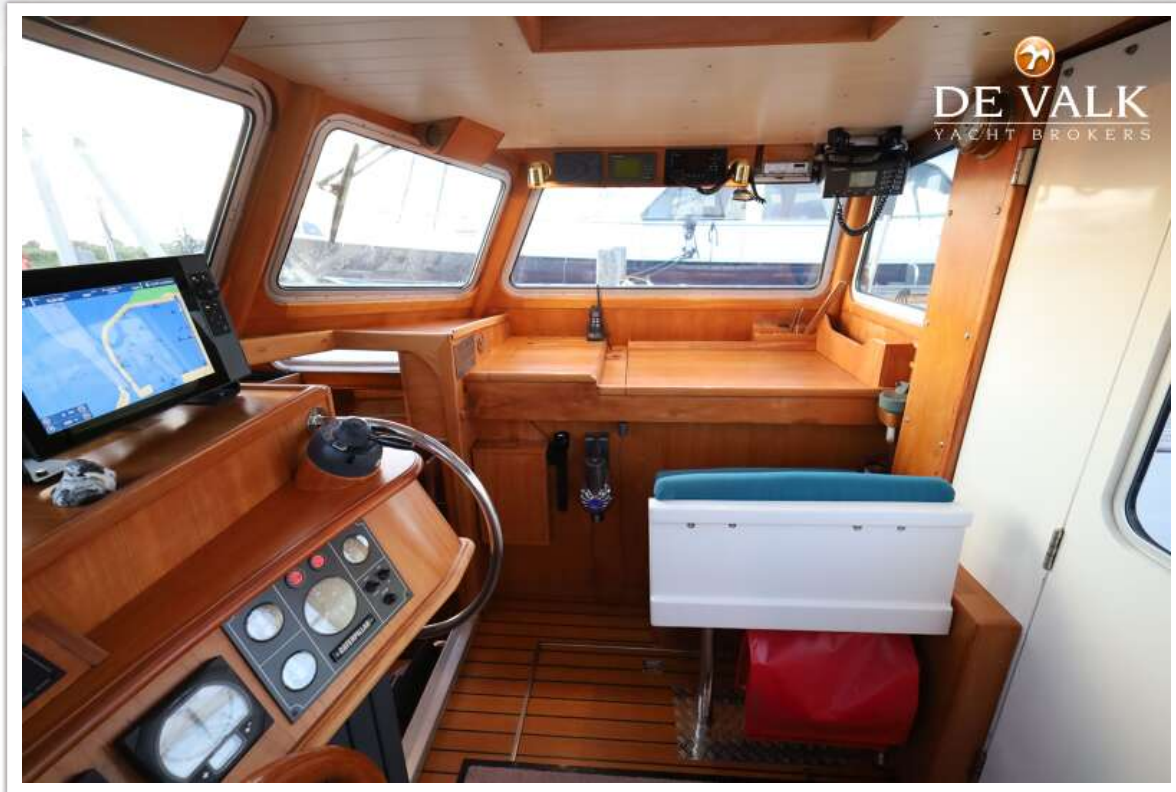


# ROBERT CLARK 64 PILOTHOUSE

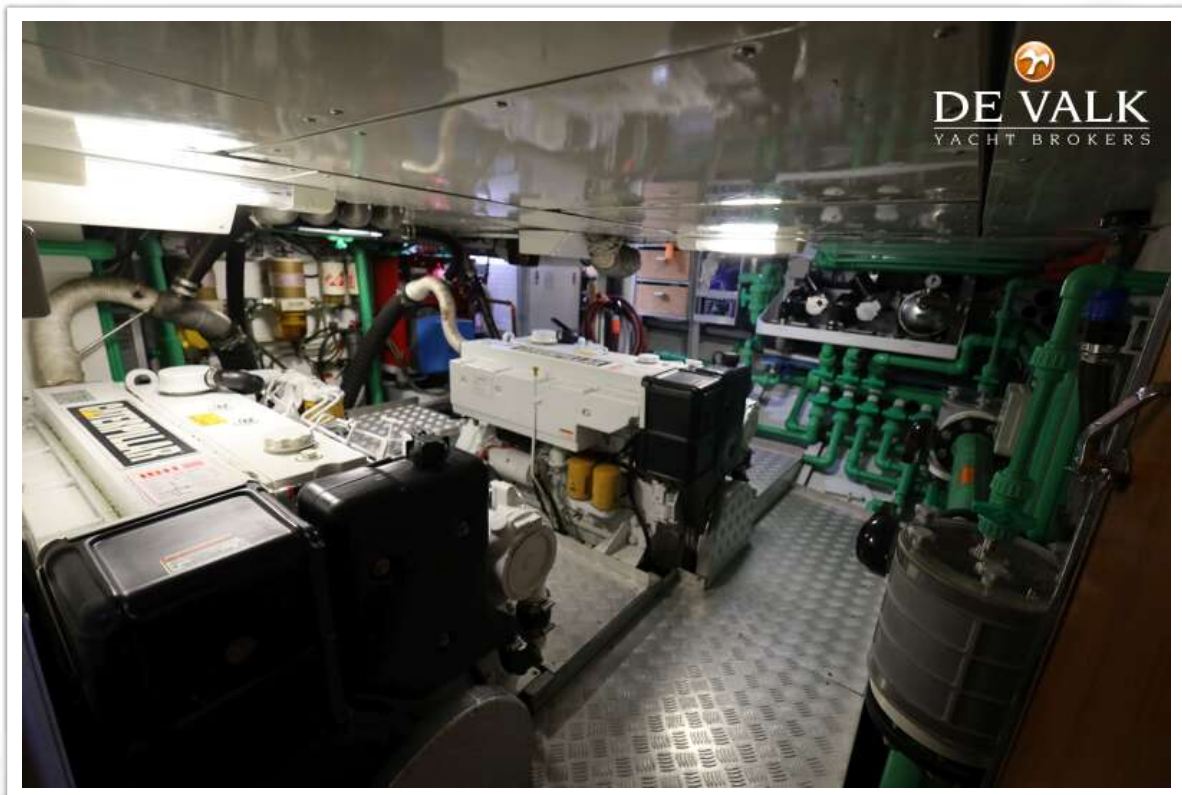
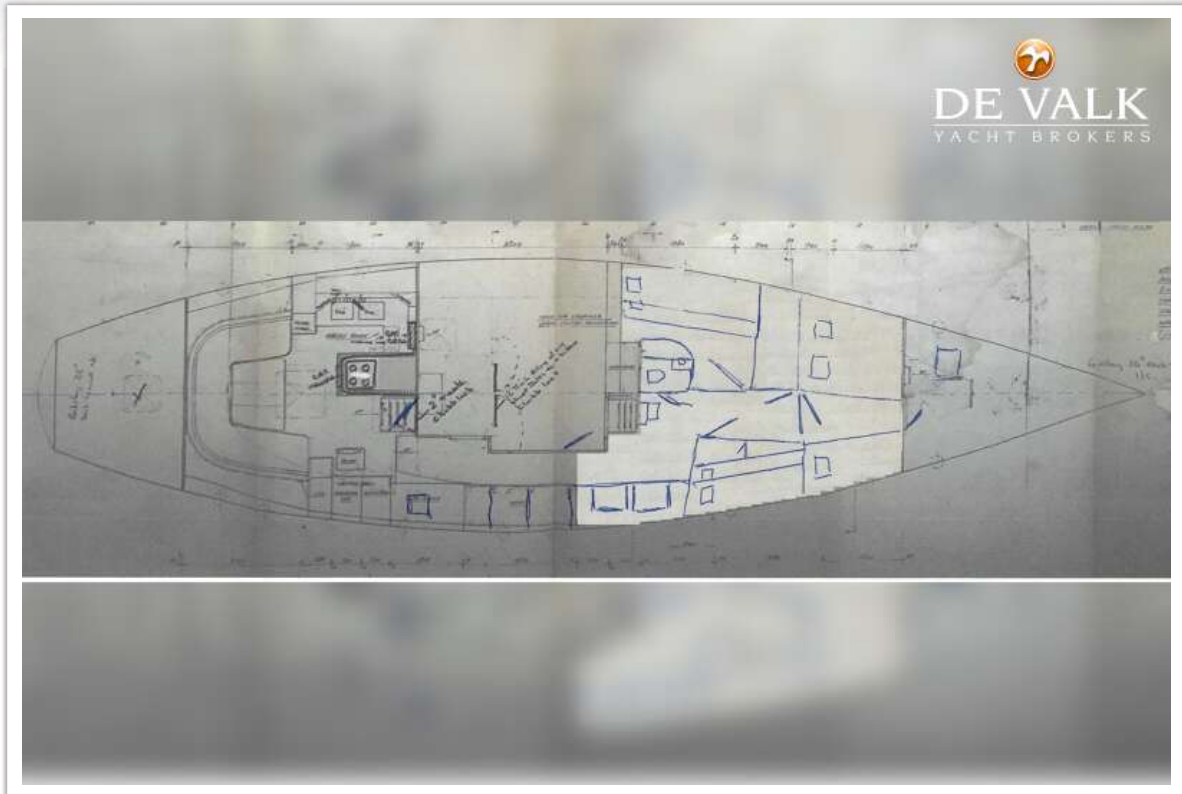




# ROBERT CLARK 64 PILOTHOUSE

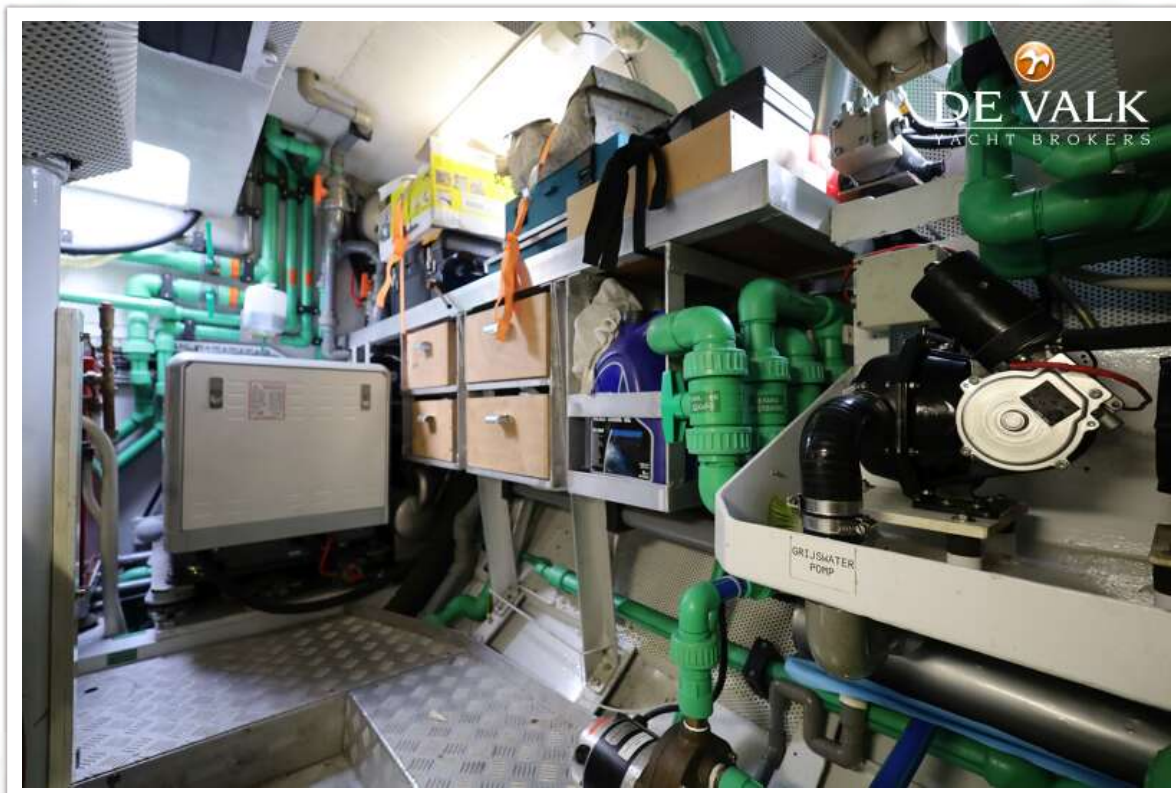
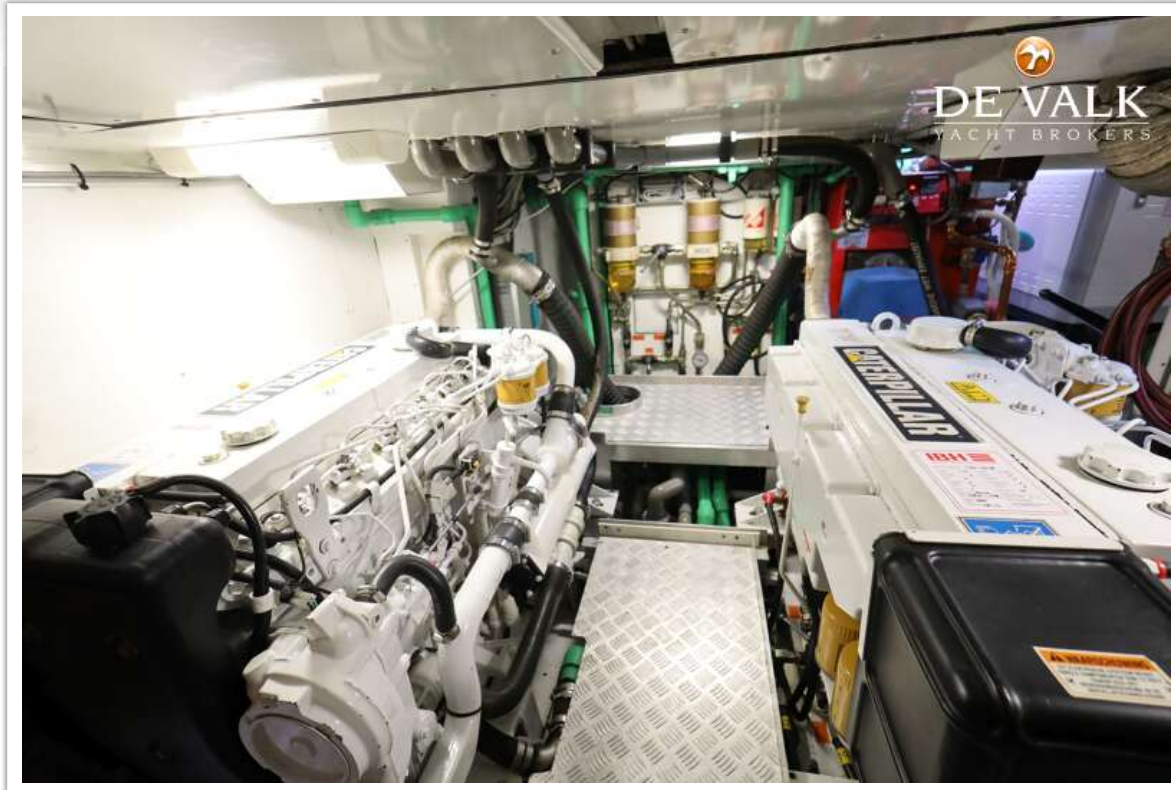


# ROBERT CLARK 64 PILOTHOUSE





# ROBERT CLARK 64 PILOTHOUSE



# ROBERT CLARK 64 PILOTHOUSE

