



DE VALK  
YACHT BROKERS



## BENETEAU FLYER 12 CABIN



DE VALK  
YACHT BROKERS

# BENETEAU FLYER 12 CABIN

## KOMMENTARE DES MAKLERS

This beautiful Beneteau Flyer Cabin is very complete equipped, s.a.; twin shaft Volvo Penta engines, bowthruster, new (2023) sterntruster, new (2024) trimflaps, new (2024) Garmin chart plotter & radar & autopilot & VHF & depht/log/wind, generator, airconditioning, electric opening roof, heater, grill in the cockpit and equipped with teak on the outside. The boat is known about her great stability, excellent passage through waves, tight turns even at high speed, gradual acceleration, excellent manoeuvrability and the helmsman has excellent visibility over the boat. She can be visited anytime.

*Jan-Ward van Dantzig*

## TECHNISCHE DATEN

<b>Maße</b>	12.62 x 3.99 x 1.16 (m)	<b>Werft</b>	Beneteau
<b>Baujahr</b>	2006	<b>Kabinen</b>	2
<b>Material</b>	GFK	<b>Kojen</b>	4
<b>Motor(en)</b>	2 x Volvo Penta D6-370I-B HS diesel	<b>PS/kW</b>	2 x 370.00 (PS), 272.32 (kW)
<b>Verkaufspreis</b>	verkauft (MwSt. )	<b>Liegeplatz</b>	beim Verkaufsburo

## KONTAKT

<b>Verkaufsbüro</b>	De Valk Sint Annaland B.V.	<b>Telefon</b>	+31 (0)166 601 000
<b>Adresse</b>	Koelhuisweg 4 4697 RM Sint Annaland NL	<b>E-Mail</b>	sintannaland@devalk.nl

## HAFTUNGSAUSSCHLUSS

Diese Angaben erfolgen nach bestem Wissen, können jedoch nicht garantiert werden.



# BENETEAU FLYER 12 CABIN

## ALLGEMEIN

<b>Modell</b>	BENETEAU FLYER 12 CABIN
<b>Typ</b>	Motoryacht
<b>Rumpflänge (m)</b>	12,62
<b>Wasserlinienlänge (m)</b>	11,96
<b>Breite (m)</b>	3,99
<b>Tiefgang (m)</b>	1,16
<b>Durchfahrtshöhe (m)</b>	4,59
<b>Stehhöhe (m)</b>	2,00
<b>Baujahr</b>	2006
<b>Werft</b>	Beneteau
<b>Land</b>	Frankreich
<b>Entwerfer</b>	André Beneteau & Patrice Sarrazin
<b>Gewicht (t)</b>	9,24
<b>CE Norm</b>	B
<b>Rumpfmateri al</b>	GFK
<b>Rumpffarbe</b>	Rot And white
<b>Rumpfform</b>	Deep-V
<b>Material Aufbauten</b>	GFK
<b>Stossliste</b>	Edelstahl New in 2016
<b>Deckmaterial</b>	GFK
<b>Deck Finish</b>	Teak
<b>Deck Finish Aufbauten</b>	Antirutsch Belag
<b>Pflicht Bedeckung</b>	Teak
<b>Antifouling (Jahr)</b>	March 2024
<b>Fenster Einfassung</b>	Edelstahl
<b>Fenster Material</b>	Polycarbonat
<b>Decks Luke</b>	Lewmar with rollo
<b>Bullauge</b>	Edelstahl
<b>Mast legbar</b>	hydraulik (New in 2016)
<b>Treibstofftank (Liter)</b>	Aluminium 2 x 600



# BENETEAU FLYER 12 CABIN

<b>Füllstandsanzeige (Treibstofftank)</b>	ja
<b>Trinkwassertank (Liter)</b>	Kunststoff 320
<b>Füllstandsanzeige (Trinkwasser)</b>	ja
<b>Fäkaelien Tank (Liter)</b>	Kunststoff 80
<b>Fäkaelien Tankablauf</b>	Deck Verbind. + Uw Linie
<b>Grauwassertank (Liter)</b>	Kunststoff 220
<b>Radsteuerung</b>	hydraulik
<b>Weitere Info Farbe und Anstrich</b>	The red parts on the hull were painted in 2017
<b>Weitere Info</b>	Exterior has been professional polished in March 2024
<b>Weitere Info</b>	The windscreen and the sliding side windows are in tinted glass.

## UNTERKUNFT

<b>Kabinen</b>	2
<b>Kojen</b>	4
<b>Innen</b>	Pear-coloured Mukali - High gloss varnish finished
<b>Fussboden</b>	Teak On the floor in the saloon (same as in the cockpit)
<b>Decksalon</b>	Headroom in cockpit at entrance : 2,07 m
<b>Salon</b>	With 360° panoramic view & carefully thought out ventilation
<b>Standhöhe Salon (m)</b>	2,02
<b>Schiebedach</b>	elektrisch Transparent opening roof
<b>Heizung</b>	Diesel Heißluft New in 2021 : Webasto Air Top EVO 55
<b>Klima Anlage</b>	Klima einzel Funktion Rivacold - Vitrefrigo - 2400 BTU
<b>Dinette zum umbauen</b>	The saloon table is extendable and also height adjustable (for meals, cocktails, sleeping or lounge sofa)
<b>Schiebetür zum Cockpit</b>	The glass sliding door consists of 2 panels with stainless steel
<b>Kombüse</b>	Headroom 2,02 m
<b>Arbeitsfläche</b>	Holz (Pear-coloured Mukali)
<b>Spülbecken</b>	Edelstahl 1 x
<b>Herd</b>	keramisch 2-ring De Dietrich glass hotplate
<b>Mikrowelle</b>	Sharp R-25ST
<b>Kuhlschrank</b>	New in 2021 : Front loader - Indel 33 (85 Liter)



# BENETEAU FLYER 12 CABIN

<b>Gefrier Truhe</b>	Small freezer compartment in the fridge
<b>Warmwasser System</b>	220V + Motor 25 Liter Quick Boiler
<b>Wasserdruck System</b>	elektrisch New water pump in 2024
<b>Geschirrausstattung</b>	Beneteau
<b>Eignerkabine</b>	Doppelbett In front cabin - Headroom 1,90 m
<b>Länge Bett (m)</b>	2,10 x 1,70
<b>Kleiderschrank</b>	hängend/Schublad/Regale
<b>Badezimmer</b>	en suite Headroom 1,90 m
<b>Toilet</b>	en suite
<b>Toilette System</b>	elektrisch Jabsco
<b>Handwaschbecken</b>	im Badezimmer Glass washbasin with designer mixer tap
<b>Dusche</b>	en suite Separate shower - Headroom 1,95 m
<b>Weitere Info</b>	Marine mattresses
<b>Gästekabine 1</b>	Doppelbett Headroom 2,00 m
<b>Länge Bett (m)</b>	2,00 x 1,55 m
<b>Kleiderschrank</b>	Regale und hängend
<b>Badezimmer</b>	en suite Headroom 1,80 - 1,88 m
<b>Toilette</b>	en suite
<b>Toilette System</b>	handbetrieb Jabsco
<b>Handwaschbecken</b>	im Badezimmer Glass wash basin with designer mixer tap
<b>Dusche</b>	en suite
<b>Weitere Info</b>	Marine mattresses
<b>Weitere Info</b>	Carefully thought out ventilation in the heads compartments & cabins (always at least 2 openings in each). Plenty of stowage space with optimised accessibility. New in 2021 : Electric grill-plate in the cockpit & Natural Blanc External Curtains.
<b>Weitere Info</b>	New in 2016 : Carpet and Cushions.

## MASCHINEN

<b>Motoranzahl</b>	2
<b>Marke</b>	Volvo Penta
<b>Typ</b>	D6-370I-B HS



# BENETEAU FLYER 12 CABIN

<b>PS</b>	370
<b>kW</b>	272.32
<b>Kraftstoffart</b>	Diesel
<b>Installiert im Jahr</b>	2006
<b>Höchstgeschwindigkeit (Kn)</b>	30
<b>Marschgeschwindigkeit (Kn)</b>	16
<b>Motorstunden</b>	1220
<b>Kühlungssystem Motor</b>	indirekte Wärmetauscher 2 x New in October 2023
<b>Antrieb</b>	Schraubenwelle
<b>Welle Dichtung</b>	2 x New in September 2023
<b>Motor bedienung</b>	elektrisch
<b>Gewende getriebe</b>	hydraulic
<b>Bugschraube</b>	elektrisch MaxPower Duo (with 2 x 3 blade propeller)
<b>Heckschraube</b>	elektrisch New in 2023 : Slepner Side Power (with 2 x 5 blade propeller)
<b>Exhaust</b>	wassergekühlt
<b>Propeller Typ</b>	fest 2 x
<b>Propellerblätter</b>	4
<b>Material Propellerwelle</b>	Edelstahl
<b>Propellerwelle schmierung</b>	Wasser
<b>Hand Bilgenpumpe</b>	ja
<b>Elektrische Bilgenpumpe</b>	New in October 2023 : Sahara 500
<b>Elektrische Anlage</b>	12 & 24 & 220 Volt
<b>Generator</b>	leise Separator Onan
<b>Starterbatterie</b>	1x 140 Ah (New in October 2023) Dynac SHD Pro & 1 x 145 Ah Varta
<b>Versorgungsbatterie</b>	New in October 2023 : 2 x 140 Ah Dynac DC AGM
<b>Generatorbatterie</b>	New in 2024 : 1 x 80 Ah Dynac AGM
<b>Bugschraubebatterie</b>	New in 2017 : 2 x 50 Ah Optima Redtop
<b>Heckschraubebatterie</b>	New in 2023 : 1 x Ah ??
<b>Batterie Monitor</b>	ja



# BENETEAU FLYER 12 CABIN

<b>Batterie Ladegerat</b>	1 x CTrek Multi XS 7000 (New in 2024) & 1 x Victron Blue Smart 12V10A (New in 2017 - for bow truster batteries)
<b>Batterie Ladegerat/Umwandler</b>	New in 2016 : Mastervolt Mass Combi 12V/100A/2200Watt
<b>Dioden-Batterie-Koppler</b>	ja
<b>Landstrom</b>	mit Kabel
<b>Trimklappen</b>	New in 2024 : ZipWake Dynamic Trim Control System Series S
<b>Weitere Info</b>	Engines completely checked & serviced in September 2023 by Volvo
<b>Weitere Info</b>	New in October 2023 : 2 x Oil-cooler & water in fuel sensors
<b>Weitere Info</b>	Hydronautica RMC remote controle (engines, bow & sterntruster)

## NAVIGATION

<b>Kompass</b>	Plastimo Offshore 90
<b>Tiefenanziege/Logge</b>	New in 2024 : Garmin GHC 20
<b>Windlupe anzeige</b>	New in 2024 : Garmin
<b>UKW</b>	New in 2024 : Garmin GHS1 1i with a new Garmin speaker
<b>Autopilot</b>	New in 2024 : Garmin
<b>Ruderwinkel Anzeige</b>	Via autopilot
<b>Radar/GPS/Plotter</b>	New in 2024 : Garmin GPSTMap 12' screen & GMR 18HD3 radar antenna
<b>Navigation Beleuchtung</b>	ja
<b>Suchscheinwerfer</b>	New in 2016
<b>Weitere Info</b>	Glomex Antenna

## AUSRÜSTUNG

<b>Feste Haube</b>	With a transparent electric opening roof
<b>Kuchenbude</b>	New in 2023 : Grey
<b>Cockpit Polster</b>	White, also for sun deck
<b>Badeplattform</b>	Large bathing platform provided with teak
<b>Badeleiter</b>	Edelstahl Electric
<b>Heck-Tur</b>	Gate with safety flaps & strengthened hinges allows easy access





# BENETEAU FLYER 12 CABIN

<b>Gangway</b>	Hydraulic Opacmare with a remote controle
<b>Heckdusche</b>	Hot and cold pressurised water
<b>Anker</b>	Bruce Stainless steel
<b>Ankerkette</b>	Stainless steel swiffel & galvanised chain
<b>Ketten Zähler</b>	Quick
<b>Ankerwinde</b>	elektrisch Lewmar 1.000 Watt
<b>Deckwasche</b>	Salt water washing pump
<b>See Reling</b>	Edelstahl Railing with a stainless steel wire underneath
<b>Zupackenschiene (aufbauten)</b>	Edelstahl
<b>Bugkorb</b>	All-round & stainless steel pulpit
<b>Leinenschneider</b>	New in 2016 : 2 x
<b>Scheibenwischer</b>	2 x windscreen wiper with built-in washer and demister
<b>Rahmen heizung</b>	Via Webasto heating system
<b>Horn</b>	elektrisch
<b>Fenderkissen</b>	ja
<b>Festmacher</b>	ja
<b>TV</b>	New in 2023 : Samsung LED
<b>Radio</b>	New in October 2023 : Fusion Apollo 670, 3 Zone, DSP
<b>Lautsprecher im Pflicht</b>	New in 2021 : 2 x Sony BLC waterproof
<b>Lautsprecher im Salon</b>	2 x
<b>Uhr - Barometer</b>	ja
<b>Feuerloscher</b>	4 x
<b>Letzte Wartung Feuerloscher</b>	Need to be checked/renewed
<b>Weitere Info</b>	2 x Stainless steel fender basket (to store fenders). Stainless steel protection strip mounted on the bow in 2016.
<b>Weitere Info</b>	Sunbathing platform forward on the superscruction
<b>Weitere Info</b>	Cockpit bench seat is convertible to double sunbathing platform





# BENETEAU FLYER 12 CABIN





# BENETEAU FLYER 12 CABIN





# BENETEAU FLYER 12 CABIN





# BENETEAU FLYER 12 CABIN



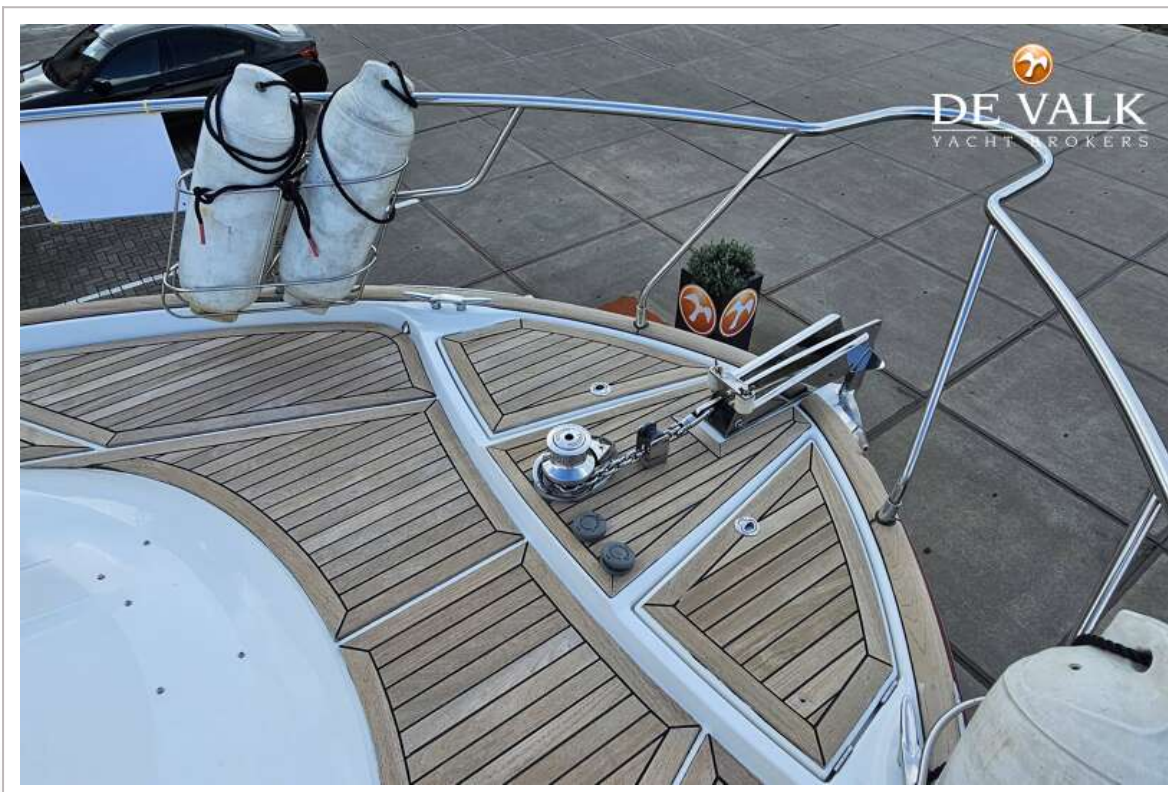


# BENETEAU FLYER 12 CABIN





# BENETEAU FLYER 12 CABIN





# BENETEAU FLYER 12 CABIN



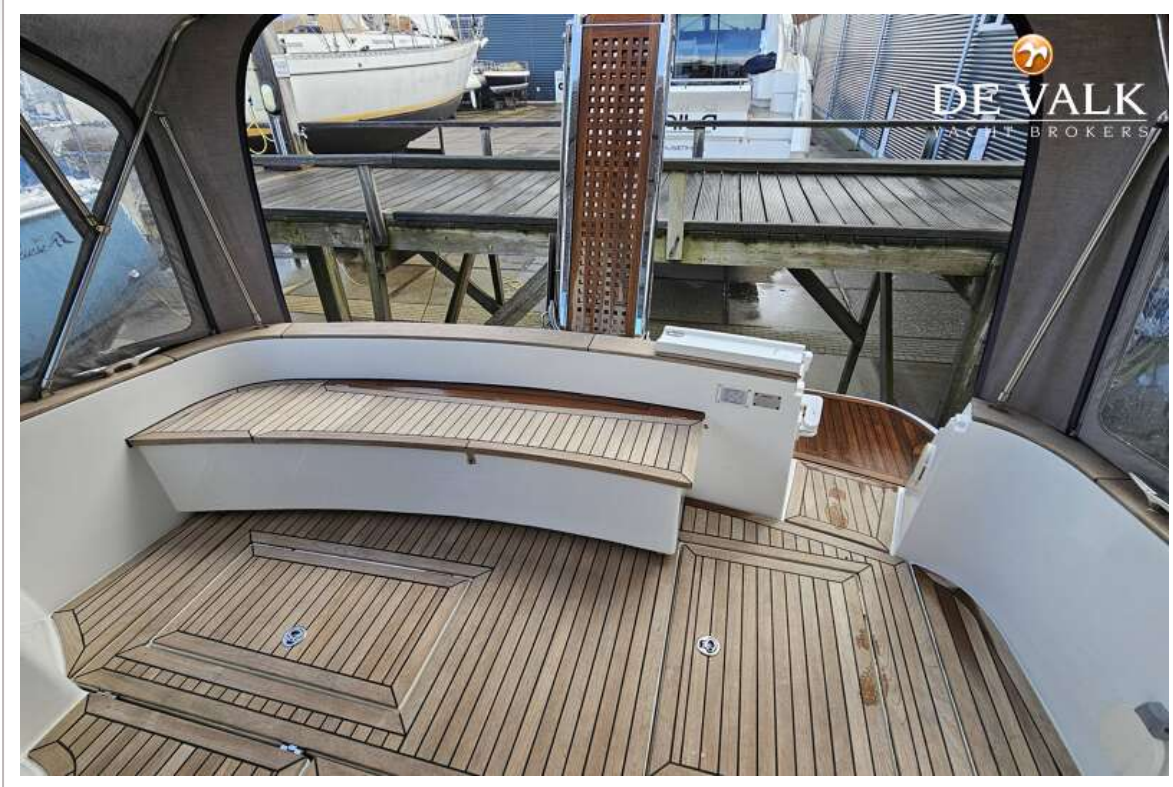


# BENETEAU FLYER 12 CABIN



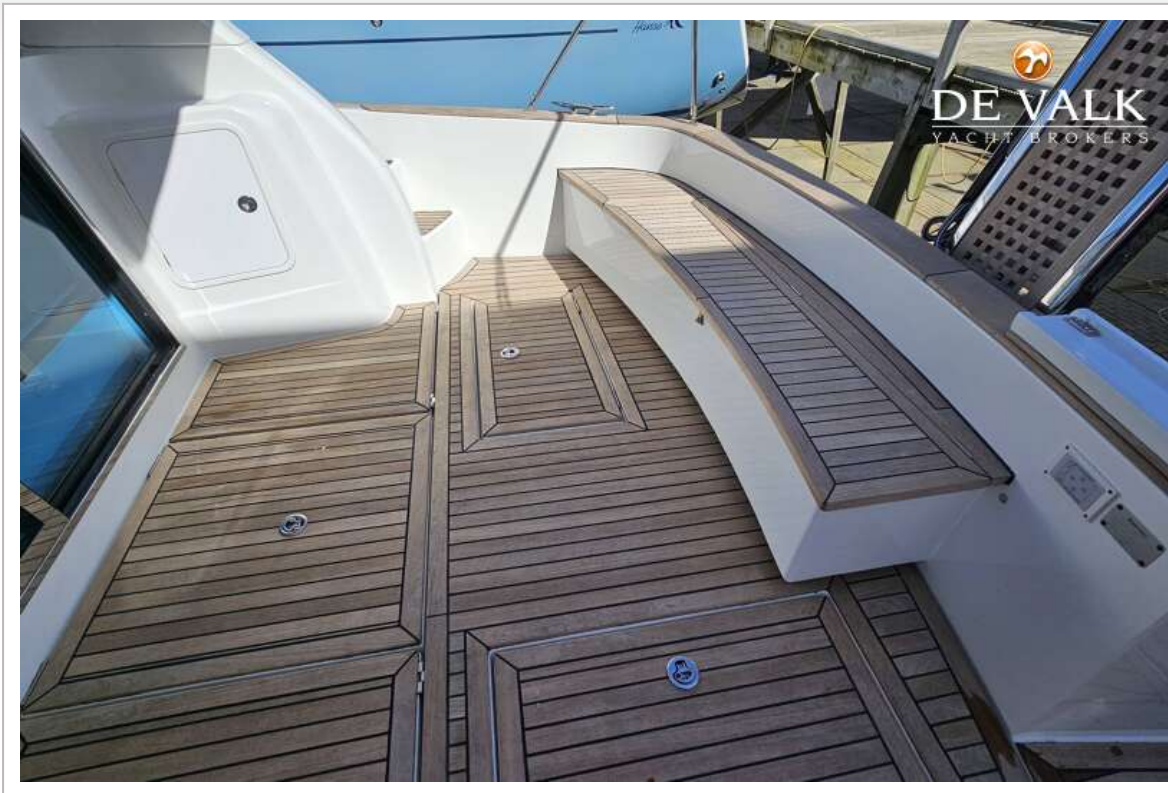


# BENETEAU FLYER 12 CABIN





# BENETEAU FLYER 12 CABIN

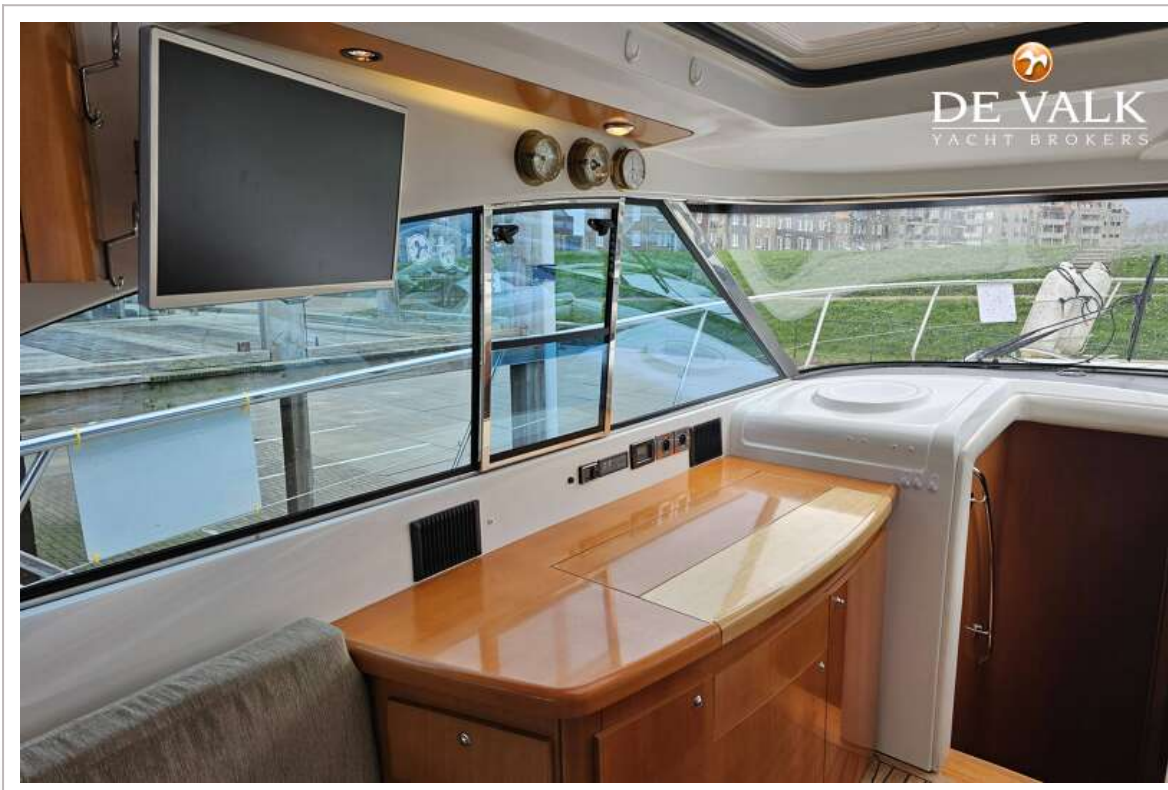


# BENETEAU FLYER 12 CABIN





# BENETEAU FLYER 12 CABIN



# BENETEAU FLYER 12 CABIN





# BENETEAU FLYER 12 CABIN





# BENETEAU FLYER 12 CABIN

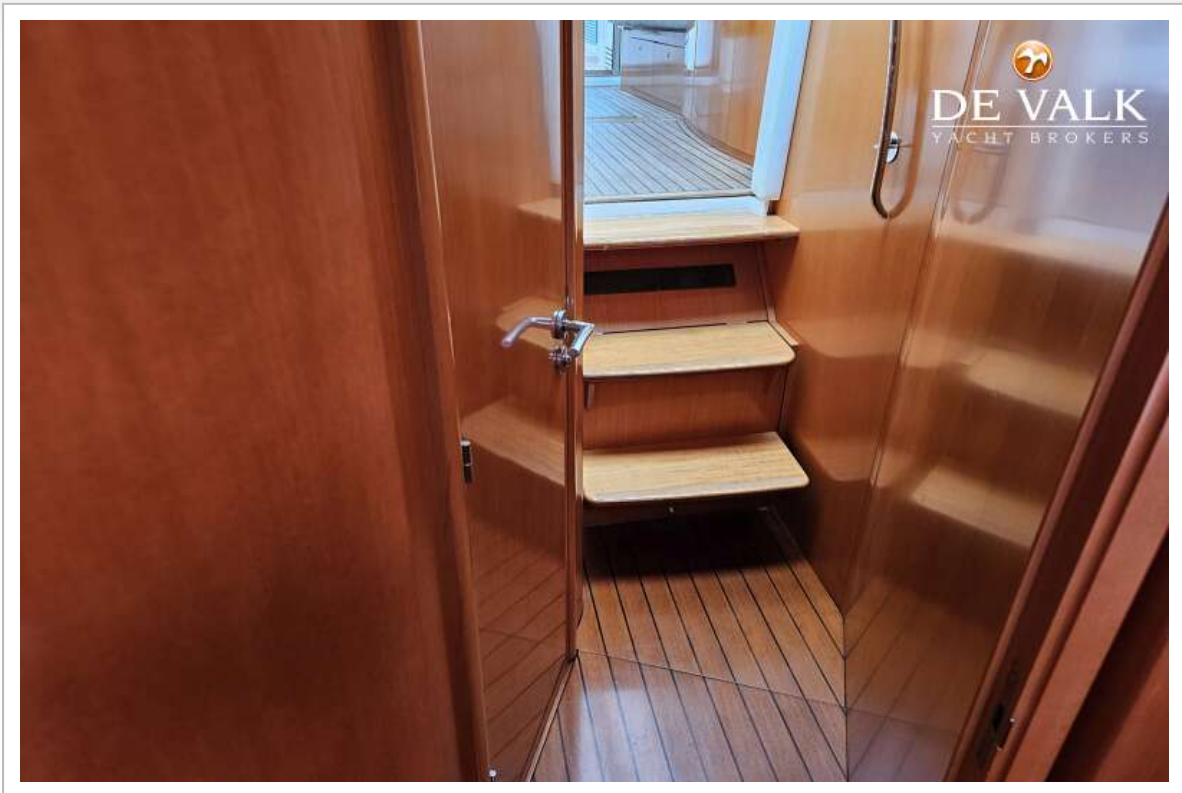


# BENETEAU FLYER 12 CABIN

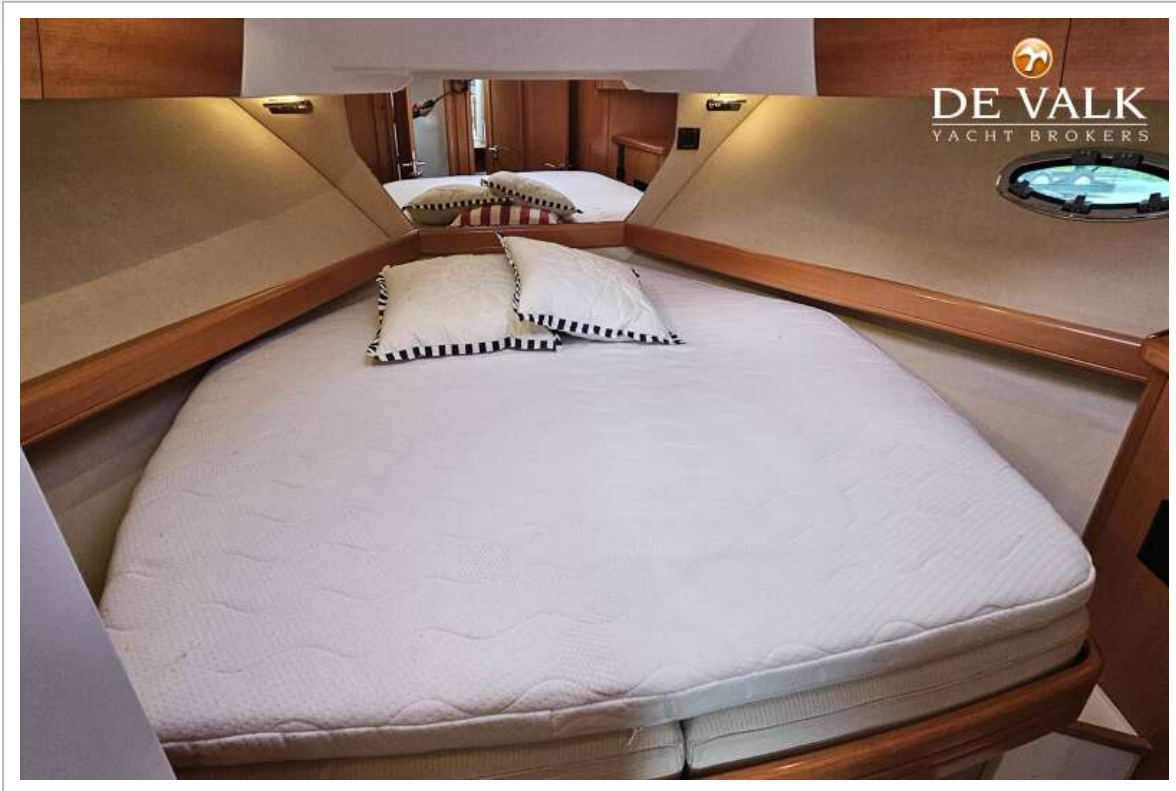




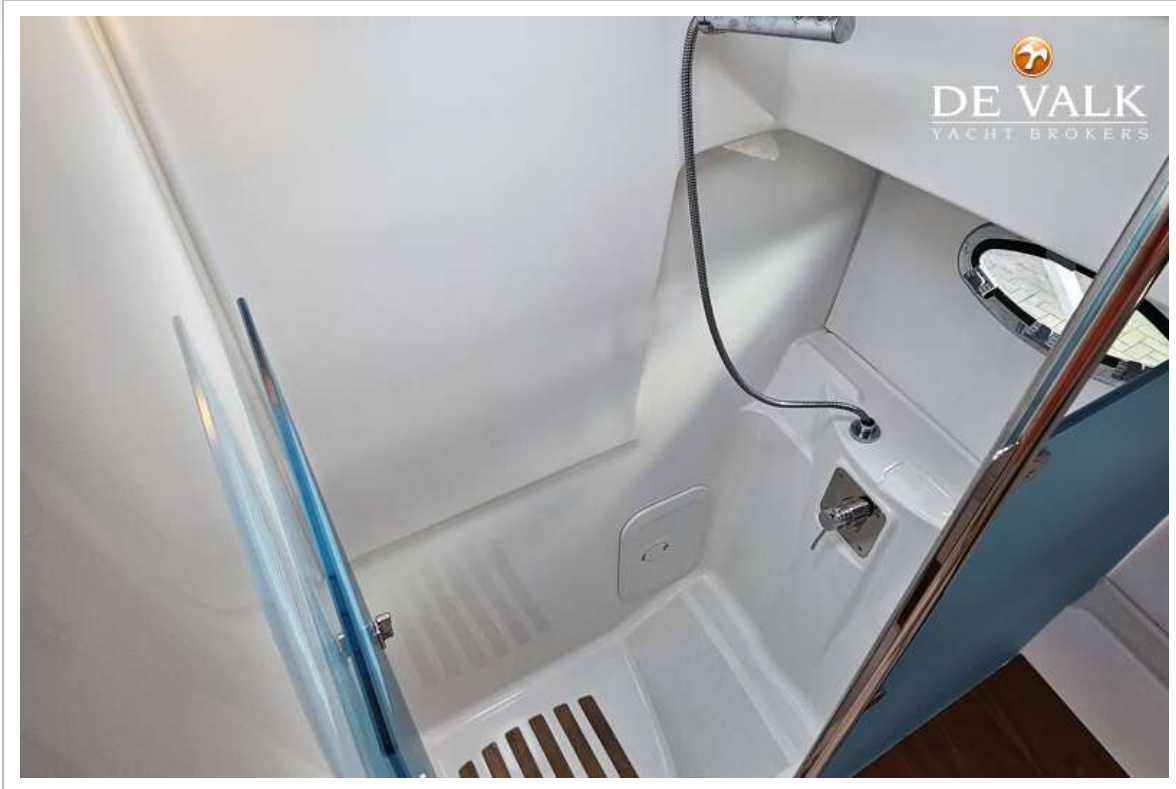
# BENETEAU FLYER 12 CABIN



# BENETEAU FLYER 12 CABIN

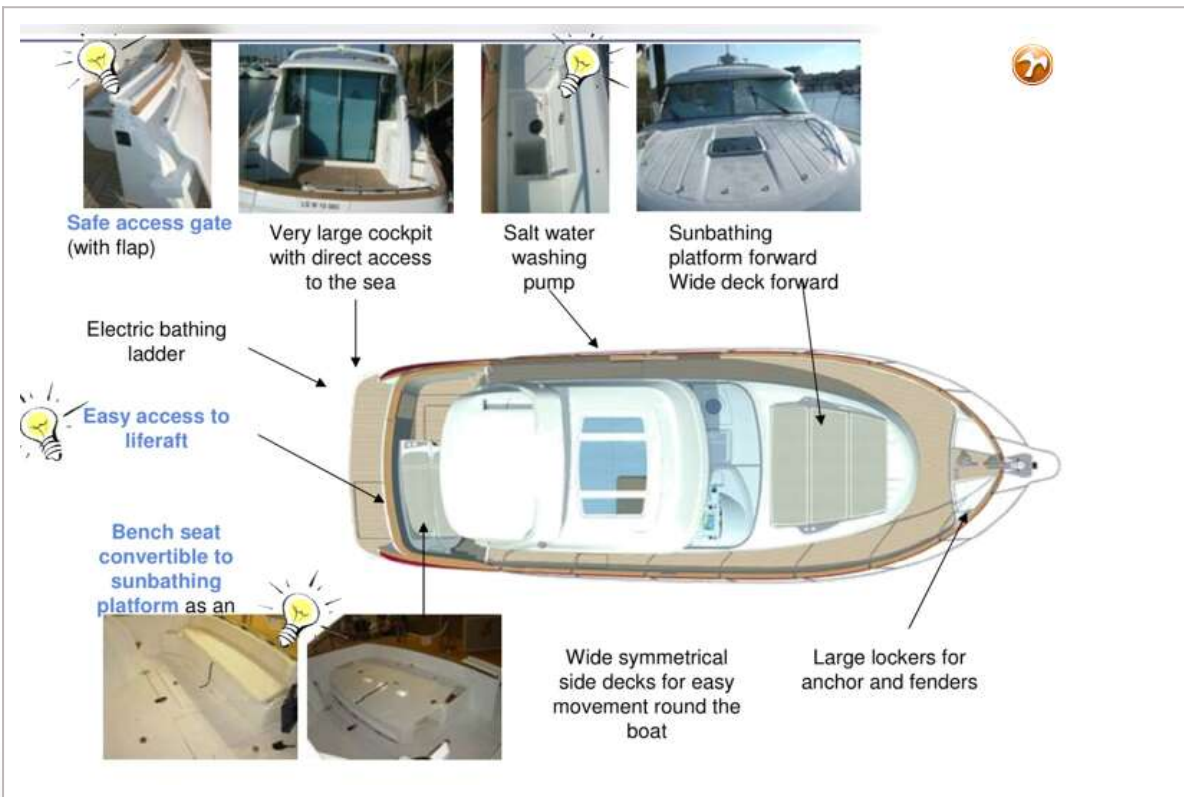


# BENETEAU FLYER 12 CABIN

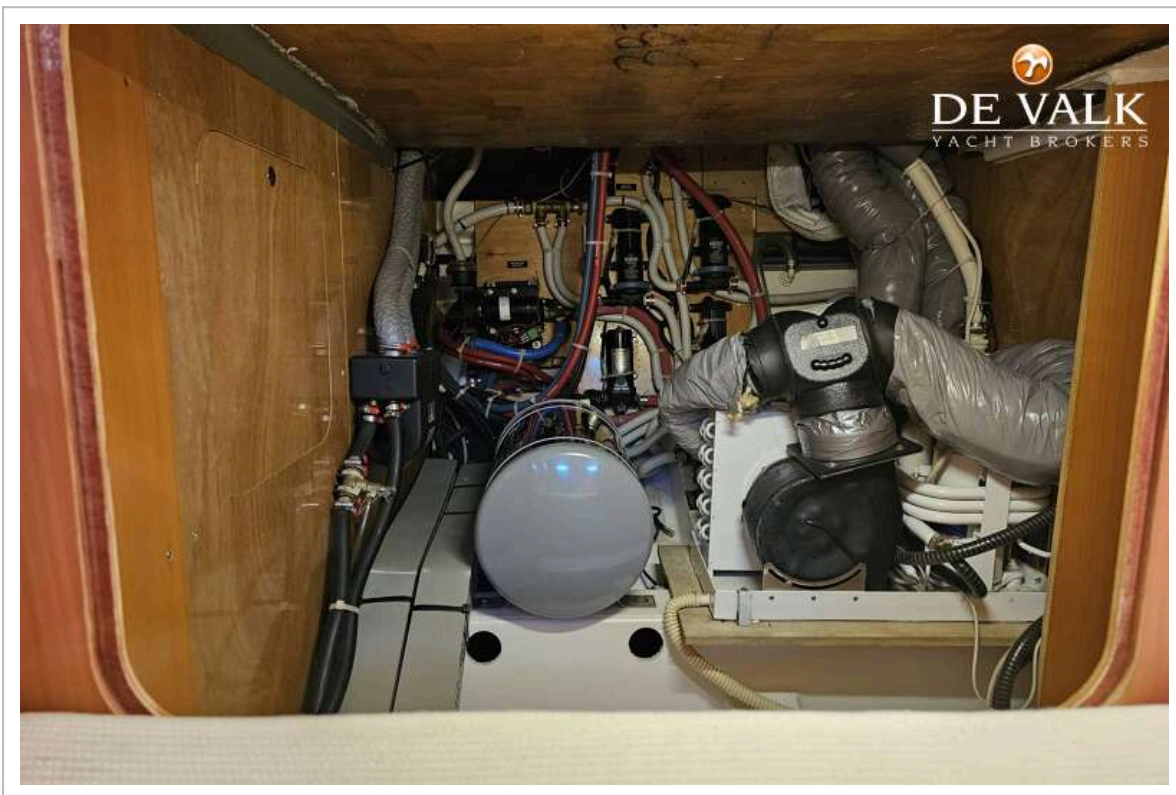
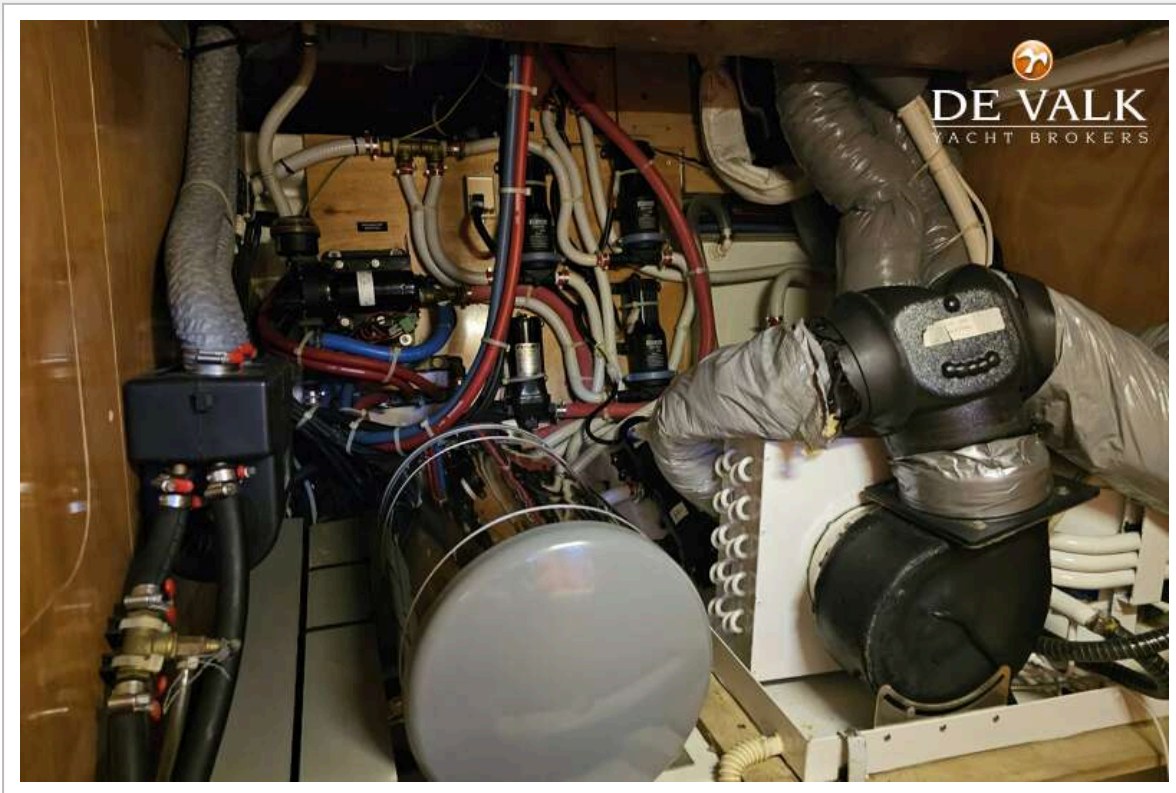




# BENETEAU FLYER 12 CABIN



# BENETEAU FLYER 12 CABIN





# BENETEAU FLYER 12 CABIN

