



DE VALK
YACHT BROKERS



TAYLOR DAVIDSEN CATAMARAN TD547



DE VALK
YACHT BROKERS

KOMMENTARE DES MAKLERS

We are afraid this Taylor Davidsen Catamaran is just for the Happy Few. 5* Plus accommodation with superb sailing performance, different & totally unique! You have to see this spectacular yacht to believe it. This is not just a Cat, there is no comparison on the market! No expenses saved on the 2010/2013 building process, the extensive 2018 upgrades in The Netherlands and the overall maintenance. Beautiful detailing with leather, carbon and f/i bamboo. Installed navigation package is "over the top". Never chartered, one owner from new. Delivered in almost as new condition.

Willem Koopmans

TECHNISCHE DATEN

| | | | |
|----------------------|-----------------------------|-------------------|--------------------------------|
| Maße | 16.28 x 8.53 x 1.45 (m) | Werft | Taylor Davidsen / Multi Marine |
| Baujahr | 2013 | Kabinen | 3 |
| Material | GFK | Kojen | 6 |
| Motor(en) | 2 x Yanmar 4JH80CR diesel | PS/kW | 2 x 80.00 (PS), 58.88 (kW) |
| Verkaufspreis | € 2.950.000 (MwSt. Bezahlt) | Liegeplatz | contact sales office |

KONTAKT

| | | | |
|---------------------|---|----------------|-----------------------|
| Verkaufsbüro | De Valk Costa Blanca | Telefon | +34 96 50 21 569 |
| Adresse | Costa Blanca Region 03730 Javea Alicante ES | E-Mail | costablanca@devalk.nl |

HAFTUNGSAUSSCHLUSS

Diese Angaben erfolgen nach bestem Wissen, können jedoch nicht garantiert werden.



ALLGEMEIN

| | |
|---|--------------------------------------|
| Modell | TAYLOR DAVIDSEN CATAMARAN TD547 |
| Typ | katamaran segelyacht |
| Rumpflänge (m) | 16,28 |
| Breite (m) | 8,53 |
| Tiefgang (m) | 1,45 |
| Stehhöhe (m) | 2,10 |
| Baujahr | 2013 |
| Lancierung | 2013 |
| Werft | Taylor Davidsen / Multi Marine |
| Land | Vereinigtes Königreich |
| Gewicht (t) | 18,2 |
| CE Norm | A |
| Rumpfmateral | GFK |
| Rumpffarbe | Orange Metallic |
| Material Aufbauten | GFK With carbon strength and details |
| Deckmaterial | GFK |
| Deck Finish | synthetisches Teak |
| Deck Finish Aufbauten | Antirutsch Belag |
| Pflicht Bedeckung | synthetisches Teak |
| Antifouling (Jahr) | 2025 |
| Fenster Material | Sicherheitsglas |
| Decks Luke | ja |
| Bullauge | ja |
| Isolation | ja |
| Treibstofftank (Liter) | 800 |
| Füllstandsanzeige (Treibstofftank) | ja |
| Trinkwassertank (Liter) | 1000 |
| Füllstandsanzeige (Trinkwasser) | ja |
| Fäkaelien Tank (Liter) | ja |
| Radsteuerung | Custom made carbon wheel |



| | |
|---------------------------------|---|
| Innerhalb Steuerung | ja |
| Aussen Steuerung | ja |
| Not-Pinne | ja |
| Weitere Info Rumpf | Reinforced with Kevlar |
| Weitere Info Farbe und Anstrich | AWL grip 2018 |
| Weitere Info | Extensive refit done at Breskens Yachtservice; costs € 1.8 mil. |
| Weitere Info | New built price over 8 million, refit € 1,8 mil. |
| Weitere Info | Carbon details: mast, davits, supports etc. |

UNTERKUNFT

| | |
|---------------------------|---|
| Kabinen | 3 |
| Kojen | 6 |
| Innen | Luxury built with f/i leather details, bamboo |
| Einteilung | Built for owner and 4 guests |
| Fussboden | Wood and carpet |
| Offenen Cockpit | ja |
| Achterdeck | ja |
| Ruderhaus/Decksalon | ja |
| Standhöhe Salon (m) | 2,1 |
| Klima Anlage | Klima mit Ruckzyklus In all cabins |
| Navigation Zenter | Look at the high end equipment! |
| Kartentisch | ja |
| Schiebetür zum Achterdeck | Manual, can be electric |
| Kombüse | ja |
| Arbeitsfläche | Corian |
| Spülbecken | Edelstahl 1,5 |
| Herd | Miele, 4 burner, halogen |
| Ofen | Miele, plus Magma grill on aft deck |
| Mikrowelle | ja |
| Kuhlschrank | Miele, plus 1 on aft deck |
| Gefrier Truhe | Miele |



| | |
|-------------------------------------|--|
| Warmwasser System | 220V + Motor Boiler |
| Wasserdruck System | elektrisch |
| Geschirrspulmaschine | Miele |
| Eismaschine | Ice cubes machine, make Winkel |
| Eignerkabine | Französisch Bett Sb hull completely decorated for a demanding owner, with office |
| Länge Bett (m) | 2,1 |
| Kleiderschrank | hängend/Schublad/Regale |
| Badezimmer | en suite |
| Toilet | en suite |
| Toilette System | elektrisch |
| Handwaschbecken | im Badezimmer Double |
| Dusche | en suite In separate part of bathroom |
| Weitere Info | Office space to work privately |
| Gästekabine 1 | Doppelbett Aft |
| Länge Bett (m) | 2,1 |
| Kleiderschrank | hängend/Schublad/Regale |
| Badezimmer | en suite |
| Toilette | en suite |
| Toilette System | elektrisch |
| Handwaschbecken | im Badezimmer |
| Dusche | en suite |
| Gästekabine 2 | Französisch Bett Front |
| Länge Bett (m) | 2,1 |
| Kleiderschrank | hängend/Schublad/Regale |
| Badezimmer | getrennt |
| Toilette | getrennt |
| Toilette System | elektrisch |
| Handwaschbecken | im Badezimmer |
| Dusche | getrennt |
| Waschmaschine/Trockner Kombi | Miele Honeycomb Care WT2780 |
| Weitere Info | Window between galley and aft deck can be completely opened |



MASCHINEN

| | |
|-----------------------------------|---|
| Motoranzahl | 2 |
| Marke | Yanmar |
| Typ | 4JH80CR |
| PS | 80 |
| kW | 58.88 |
| Kraftstoffart | Diesel |
| Installiert im Jahr | 2018 |
| Überholung im Jahr | Original 55 Hp replaced for more powerful units |
| Höchstgeschwindigkeit (Kn) | 10 |
| Marschgeschwindigkeit (Kn) | 8 |
| Verbrauch (l/h) | 8 |
| Motorstunden | 350 |
| Kühlungssystem Motor | indirekte Wärmetauscher |
| Antrieb | Saildrive |
| Saildrive Dichtung | 2018 |
| Motor bedienung | elektrisch |
| Gewende getriebe | ja |
| Exhaust | wassergekühlt |
| Hand Bilgenpumpe | ja |
| Elektrische Bilgenpumpe | ja |
| Bilge Alarm | ja |
| Elektrische Anlage | 24/12/228 |
| Generator | Mastervolt 10 kW |
| Betriebstunden Generator | 102 |
| Batterien | ja |
| Starterbatterie | 2x |
| Versorgungsbatterie | 4x Mastervolt MLI Ultra lithium 24/5000 |
| Generatorbatterie | 1x |
| Batterie Ladegerät | 3x Mastervolt Combi 24V/3500Amp |
| Umwandler | ja |



| | |
|----------------------------|-----------------------|
| Wind generator | 2x Silent Wind |
| Solar panele | 10x |
| Landstrom | ja |
| Trenn transformator | Mastervolt |
| Wasserbereiter | Spectra, 150-200 l/hr |
| Weitere Info | Double Racor filters |
| Weitere Info | Fuel polishing system |

NAVIGATION

| | |
|-------------------------------|--|
| Kompass | ja |
| Elektrisches Kompass | On autopilot |
| Multi Control Display | 3 x Raymarine I 70; 1x outside, 2x inside |
| Tiefenanzeige | See multi control |
| Logge | See multi control |
| Windlupe anzeige | See multi control |
| UKW | Raymarine DSC |
| Autopilot | Raymarine ACU 400 |
| Ruderwinkel Anzeige | ja |
| Radar | 2 x Raymarine ,1x Quatum Digital X band and 1x Digital |
| GPS | ja |
| Radar/GPS/Plotter | 12 and 7 inch outside 23 and 7 inch inside |
| Navtex | Furuno, |
| PC Computer | Professional pc at office space |
| PC Anschluss | ja |
| WIFI Antenne | ja |
| AIS Transceiver | Raymarine |
| Epirb | ja |
| Kamera | Flir Thermal one, control inside and at helm plus camera in mast |
| Navigation Beleuchtung | ja |
| Weitere Info | 2x satellite phone (Iridium) on board, each with own phone no. |



AUSRÜSTUNG

| | |
|------------------------------------|--|
| Feste Fenster | In dogger, front windows opens electric |
| Feste Haube | ja |
| Kuchenbude | Fix carbon roof with sliding glass windows with tarpaulins |
| Sonnenschirm | Cover consisting of fly screens |
| Winterplane | Completely closed wintercover, plus 1 cover with windows |
| Cockpit Polster | ja |
| Cockpit Tisch | ja |
| Badeplattform | ja |
| Badeleiter | ja |
| Gangway | Electrical |
| Heckdusche | ja |
| Anker | Rockna Manson supreme 80 lbs |
| Ankerkette | Stainless steel |
| Anker 2 | Rockna Manson supreme 60 lbs |
| Ankerkette | Stainless steel |
| Ketten Zähler | 2x |
| Ankerwinde | elektrisch |
| Deckwasche | ja |
| Beiboot | With battery charger |
| Ausserborder | ja |
| Davits | Carbon |
| Davits bedienung | ja |
| Zupackenschiene (aufbauten) | ja |
| Rettungsinsel | Container Seago Raft-G-8 |
| Rettungsinsel (Pers) | 8 |
| Schwimvesten | 8x Seago, type 275N |
| Horn | ja |
| Radar Reflektor | ja |
| Fenderkissen | ja |
| Festmacher | ja |



| | |
|--------------------------------------|---|
| Reserve Teilen | ja |
| TV | 2x Samsung, 1x in salon, 1x in owners cabin |
| Radio-CD Spieler | Full Fusion set including several places to operate |
| I-Pod Anschluss | ja |
| Subwoofer | ja |
| Lautsprecher im Salon | ja |
| Lautsprecher im Kabin | ja |
| Uhr - Barometer | ja |
| Feuerloscher | ja |
| Feuerloscher in Maschine Raum | ja |
| Weitere Info | Compressor for diving bottles, under water lights |
| Weitere Info | This yacht is "over the top built and equipped" |
| Weitere Info | ja |

RIGG

| | |
|-------------------------------|---------------------------------|
| Rig | Sloop |
| Stehendes Gut | Rod |
| Marke Mast | Offshore Spars |
| Material Mast | Kohlenstoff Built in one piece! |
| Salings | Carbon |
| Großsegel | ja |
| Großsegel-Persenning | Lazy bag |
| Latten traveller | ja |
| Durchelatted großsegel | North 2018 3DI, new 2017 |
| Kutter Stag | ja |
| Genua | North 3DI, new 2017 |
| Rollreffanlage | 2 x Reckman, electric |
| Gennaker | North (orange color), new 2017 |
| Reff Vorrichtung | Schnell-1-Lein-Reffsystem |
| Baumniederholer | ja |
| Primare Schot Winschen | 2x Harken 80, electric |



Genua Schotwischen

2x Harken 40

Fall Wischen

4x Harken 60, electric

Multifunktional Wischen

ja

Gennaker-Baum

Kohlenstoff

Weitere Info

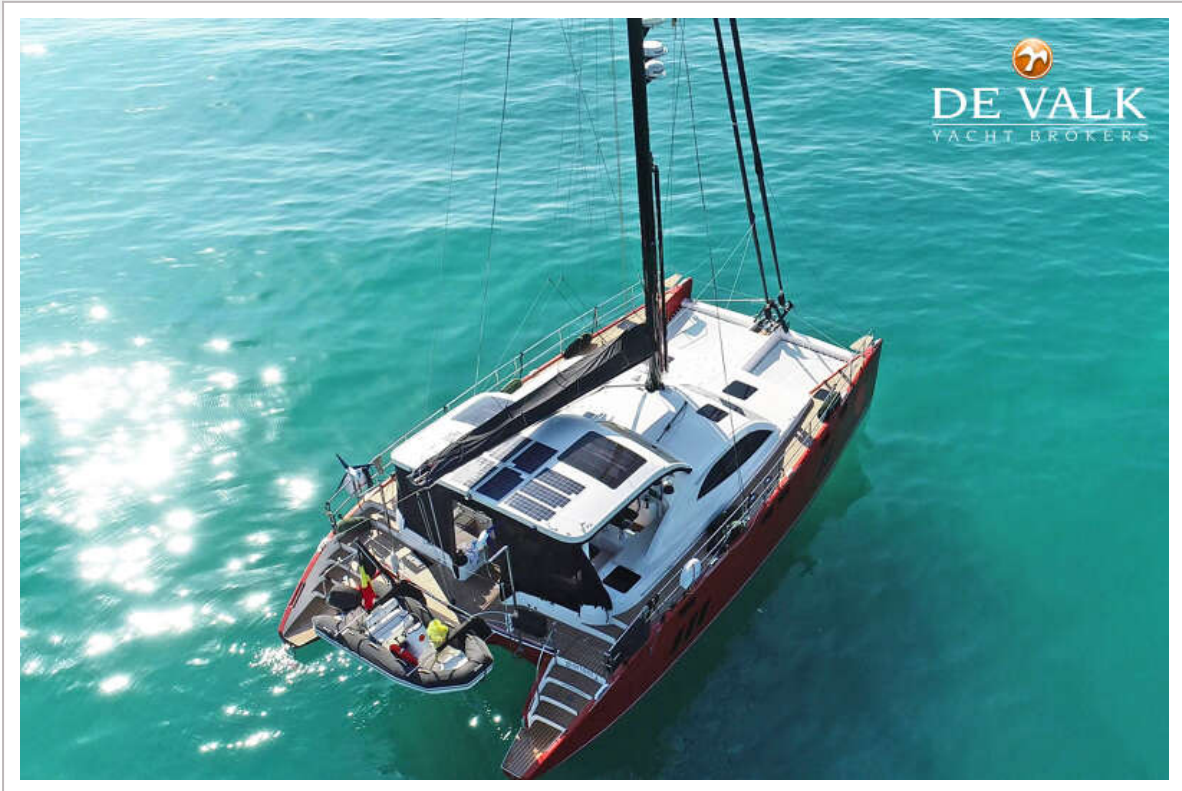
Rigging, mast and sails in very good condition.

Weitere Info

Boom: carbon smart



TAYLOR DAVIDSEN CATAMARAN TD547



TAYLOR DAVIDSEN CATAMARAN TD547



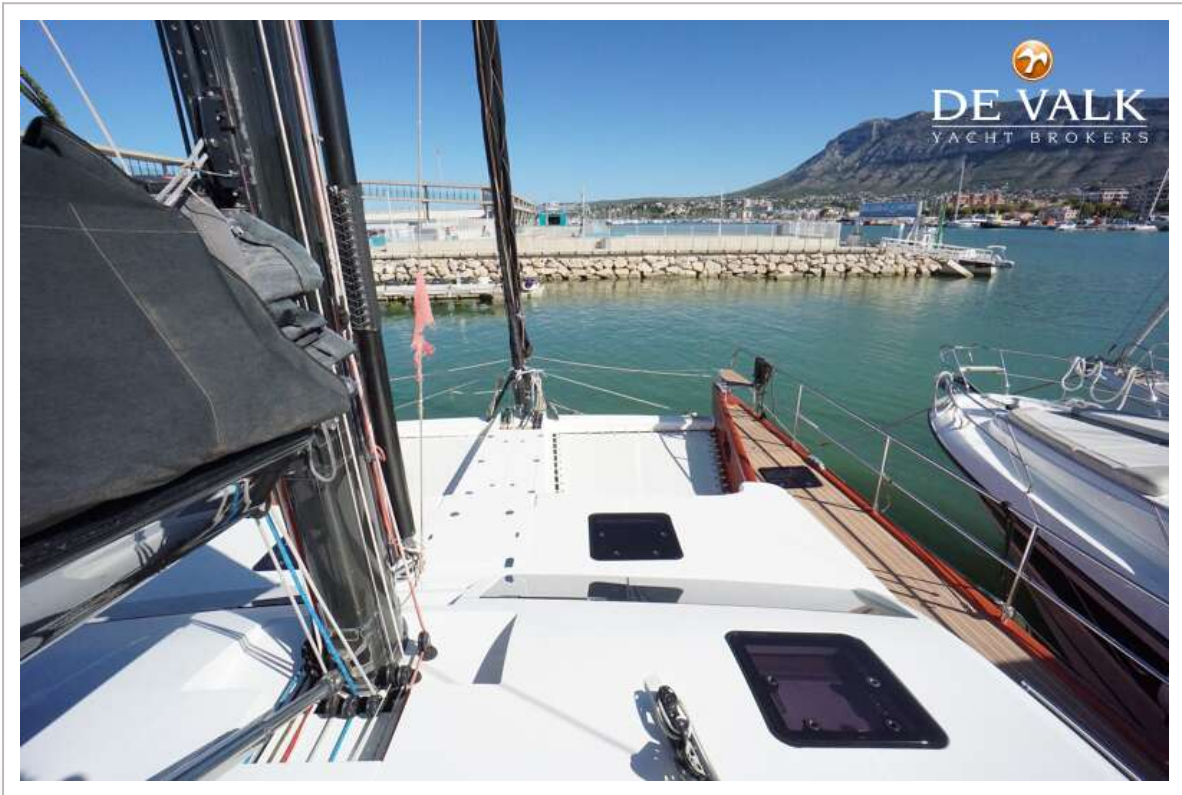
TAYLOR DAVIDSEN CATAMARAN TD547



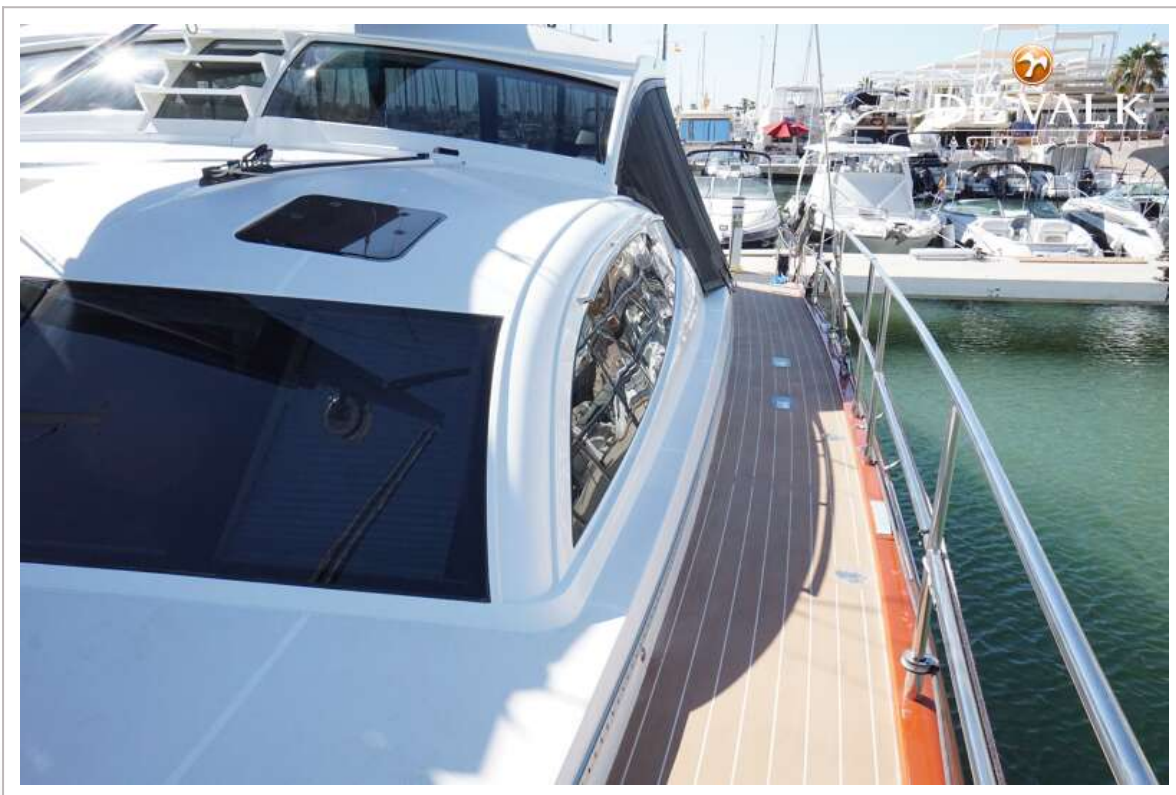
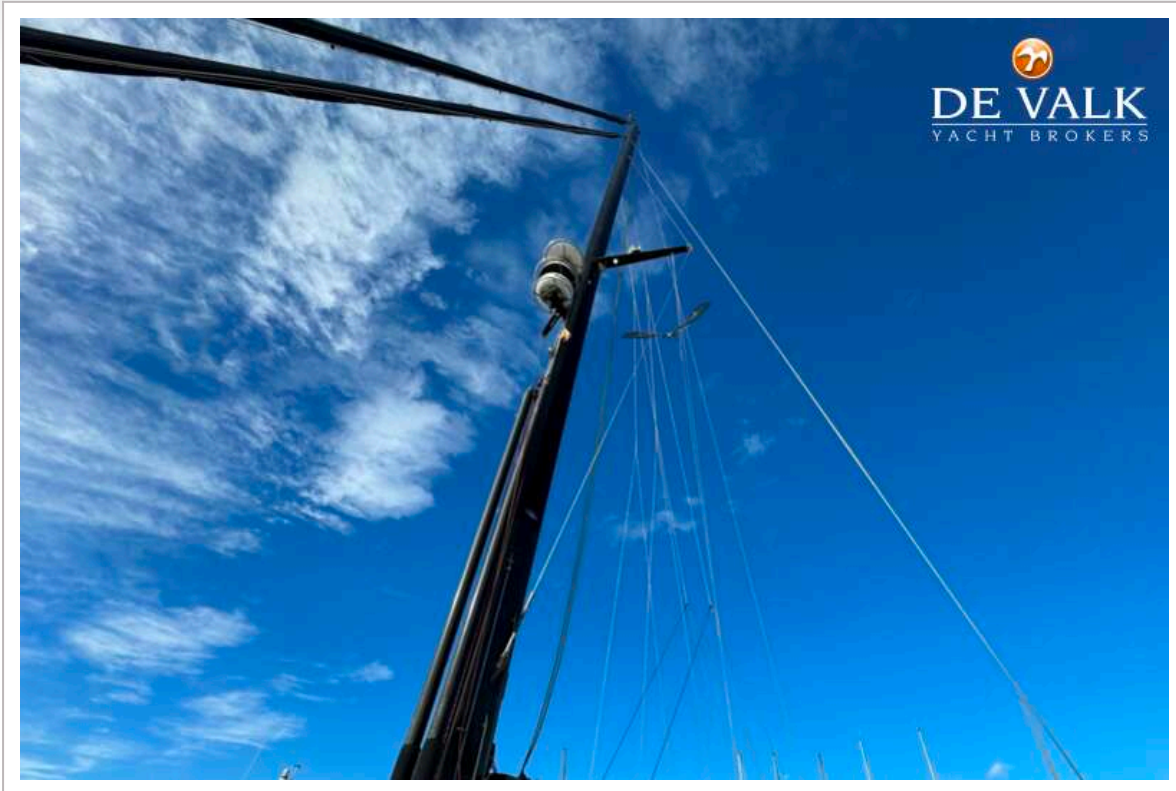
TAYLOR DAVIDSEN CATAMARAN TD547



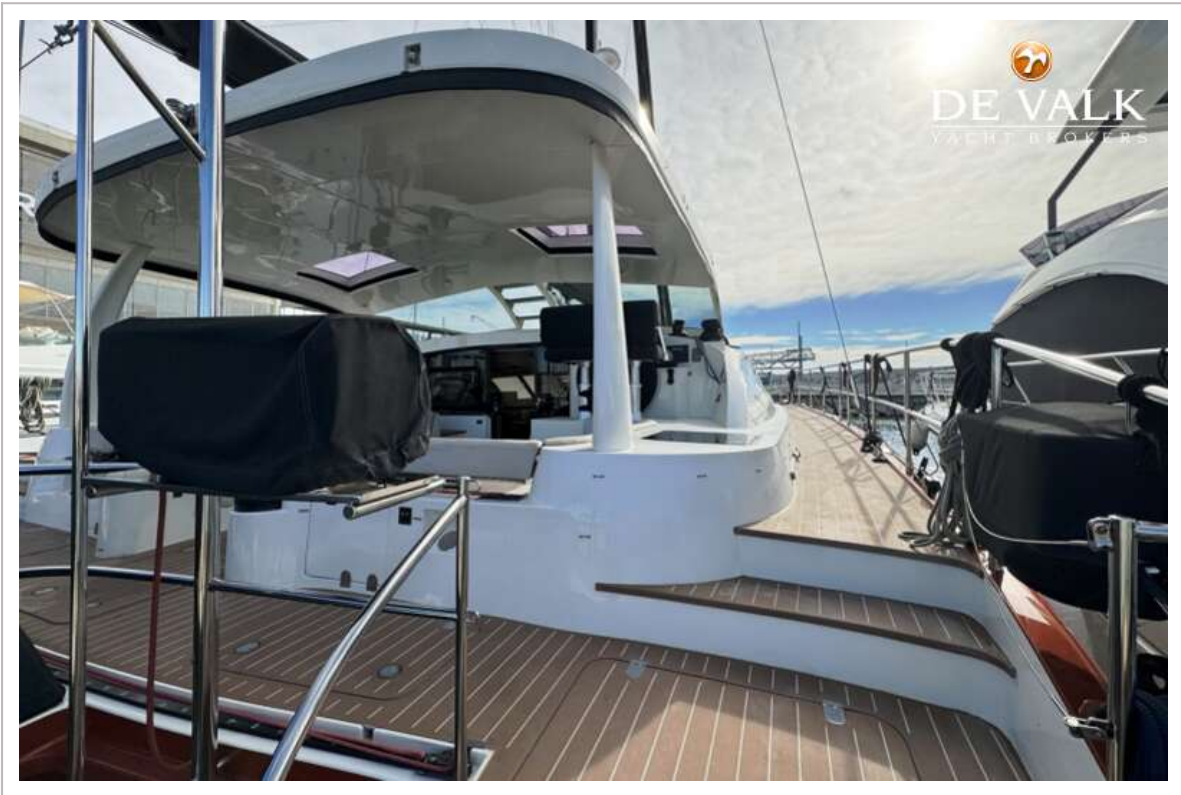
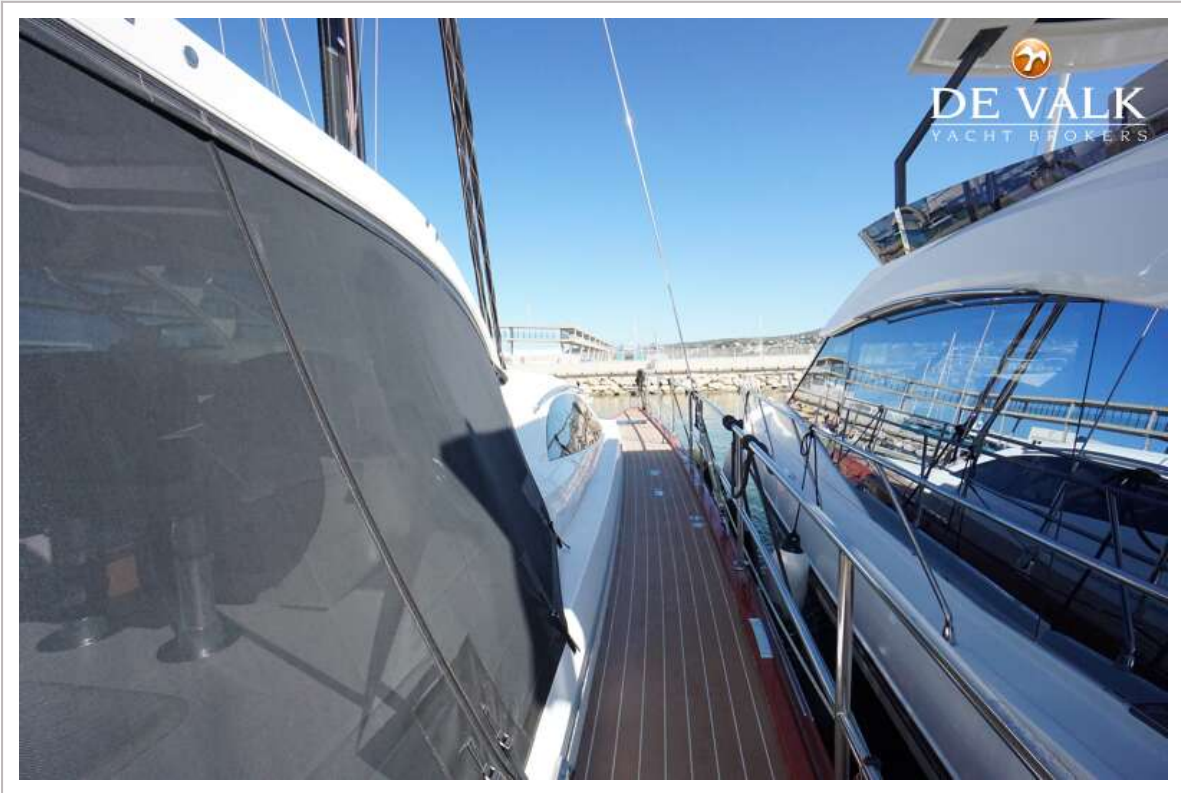
TAYLOR DAVIDSEN CATAMARAN TD547



TAYLOR DAVIDSEN CATAMARAN TD547



TAYLOR DAVIDSEN CATAMARAN TD547



TAYLOR DAVIDSEN CATAMARAN TD547



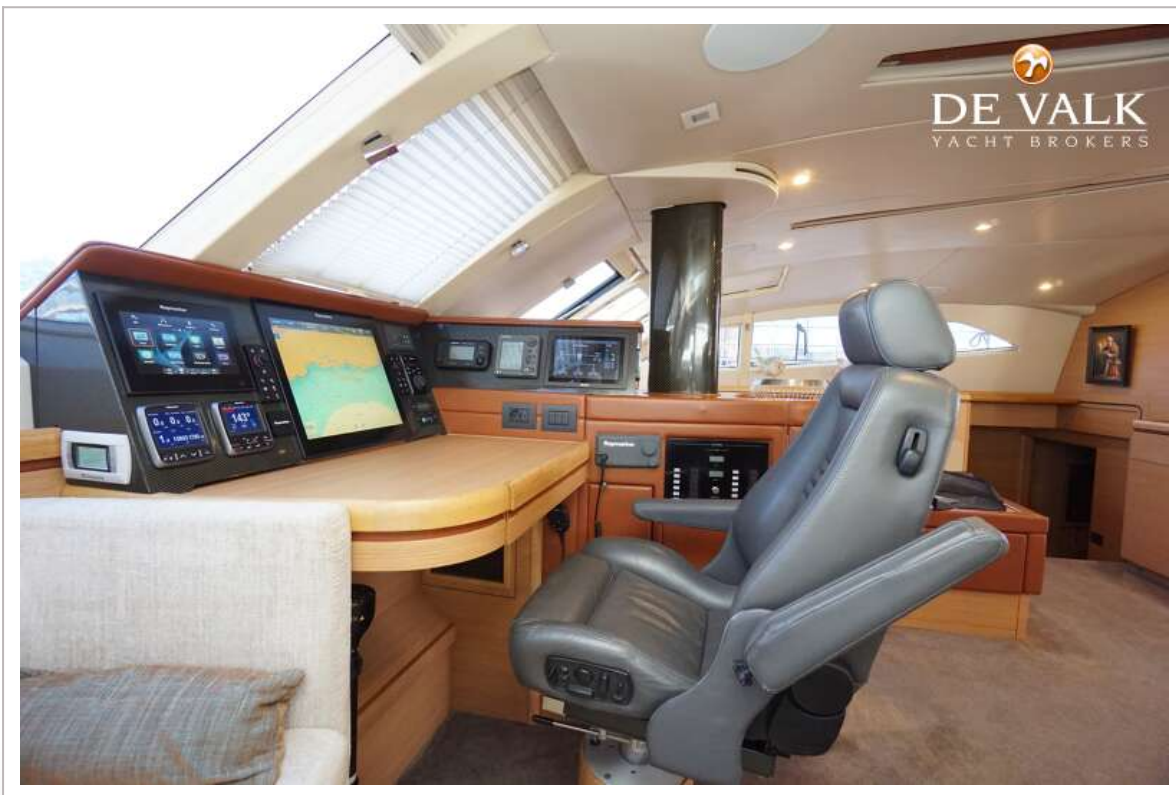
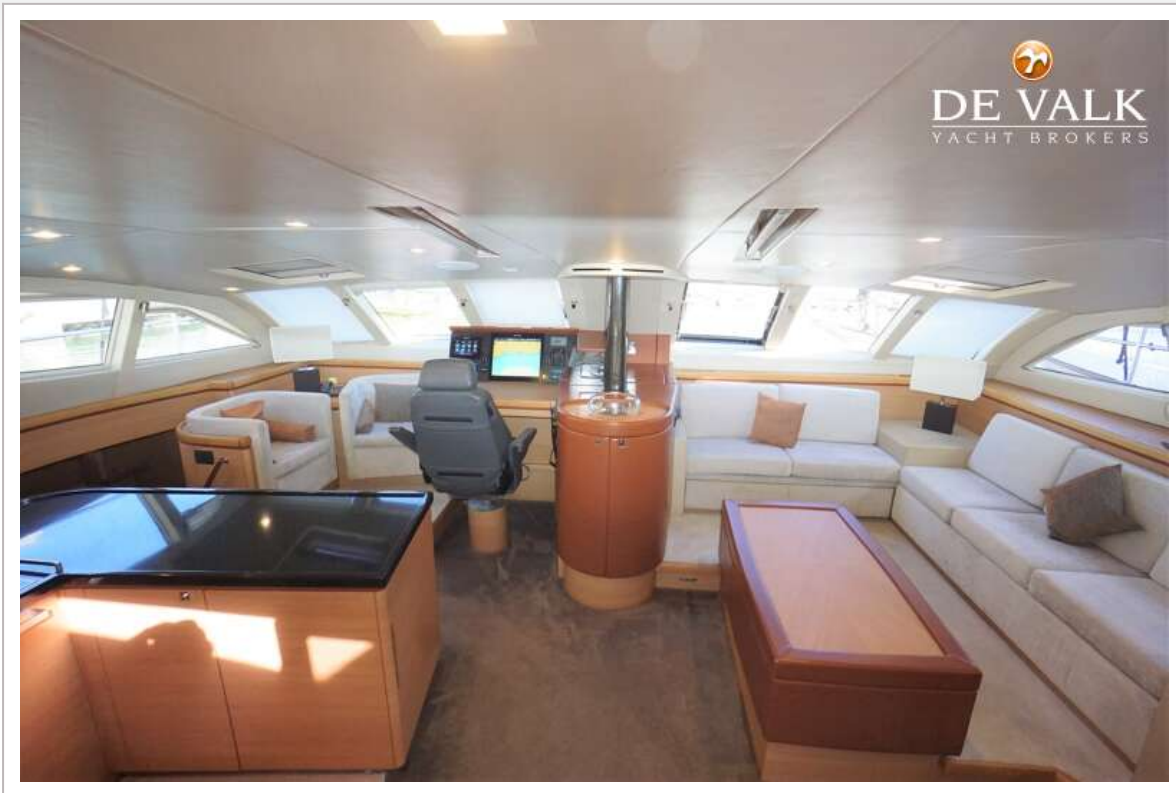
TAYLOR DAVIDSEN CATAMARAN TD547



TAYLOR DAVIDSEN CATAMARAN TD547



TAYLOR DAVIDSEN CATAMARAN TD547



TAYLOR DAVIDSEN CATAMARAN TD547



TAYLOR DAVIDSEN CATAMARAN TD547



TAYLOR DAVIDSEN CATAMARAN TD547



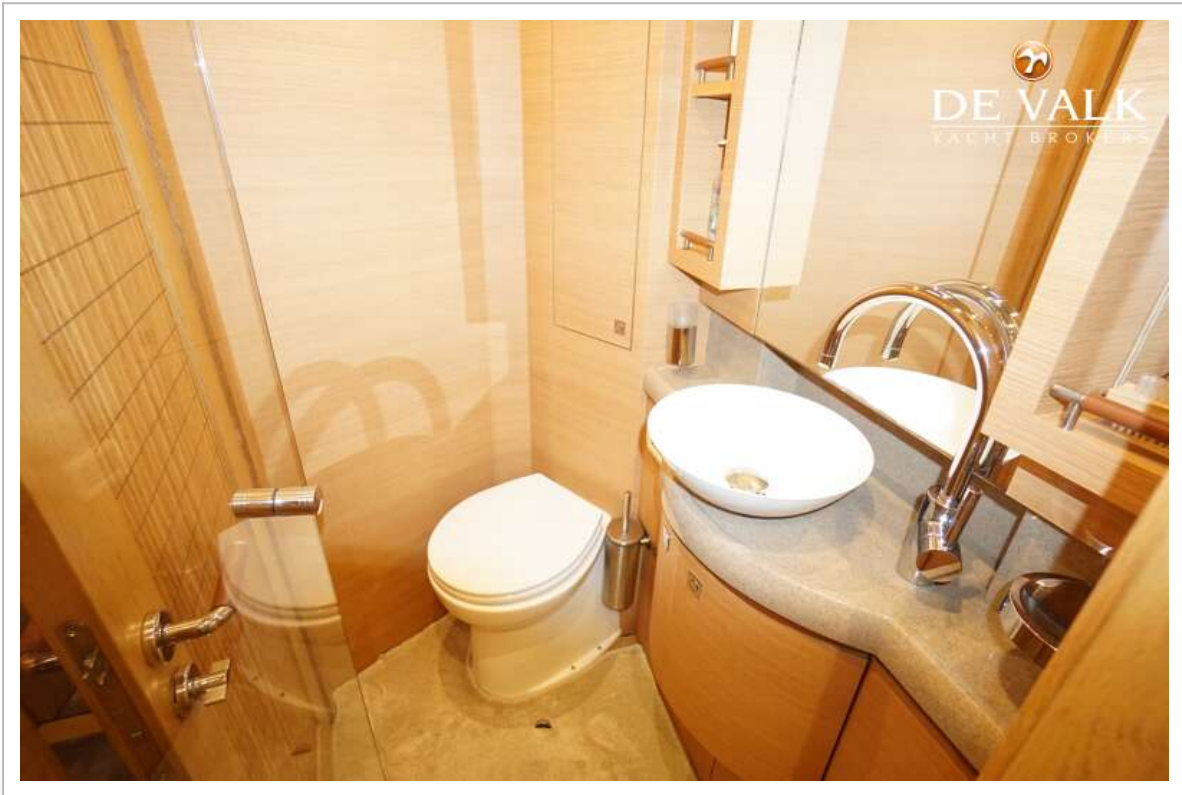
TAYLOR DAVIDSEN CATAMARAN TD547



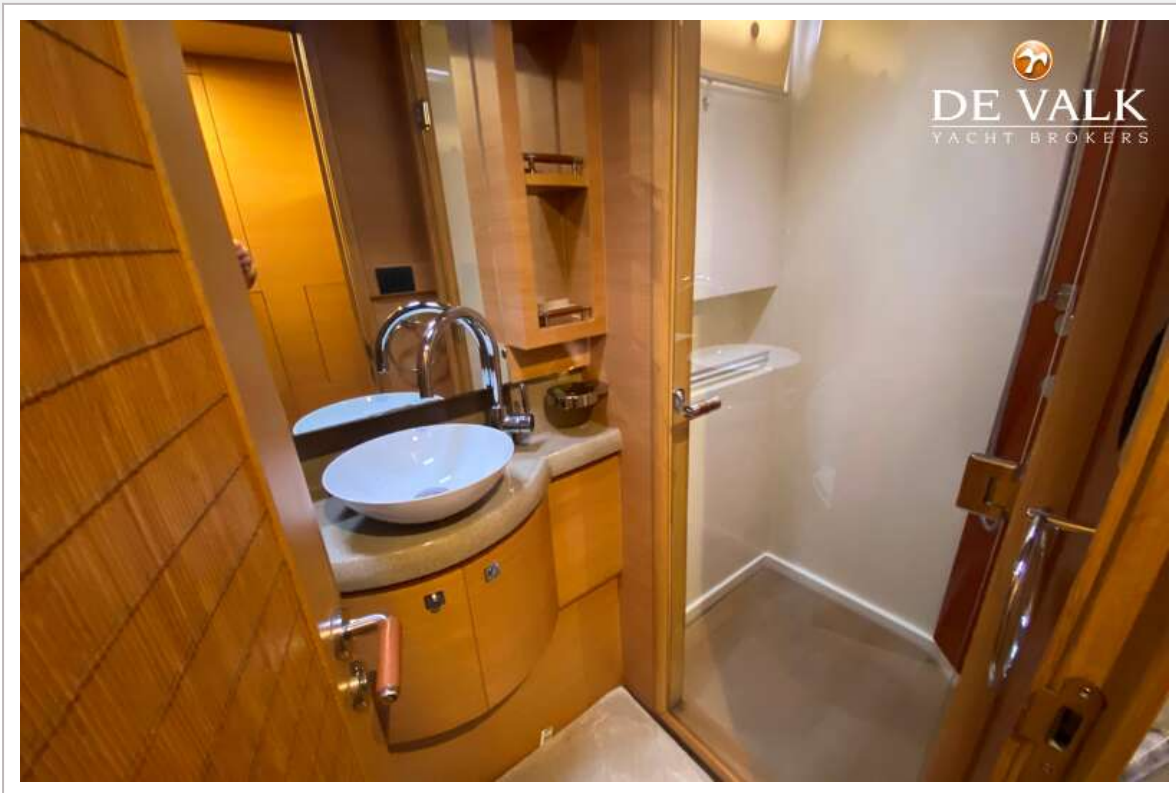
TAYLOR DAVIDSEN CATAMARAN TD547



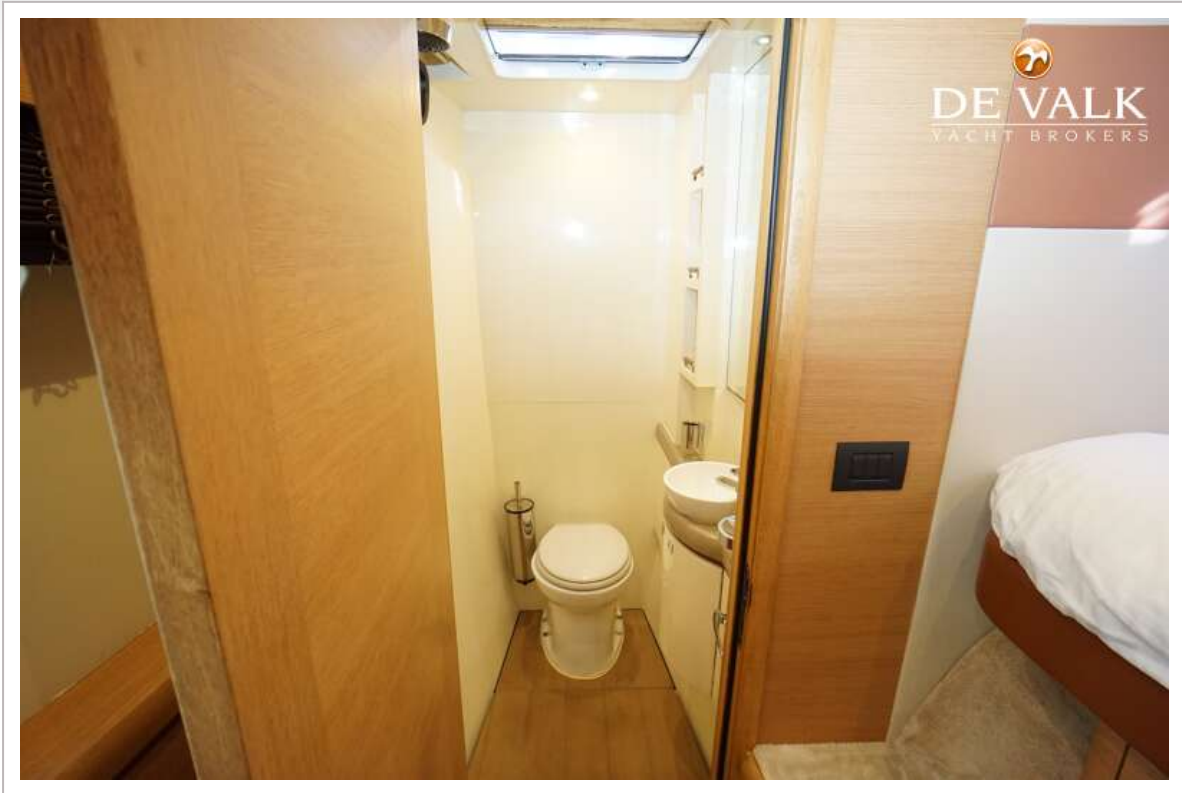
TAYLOR DAVIDSEN CATAMARAN TD547

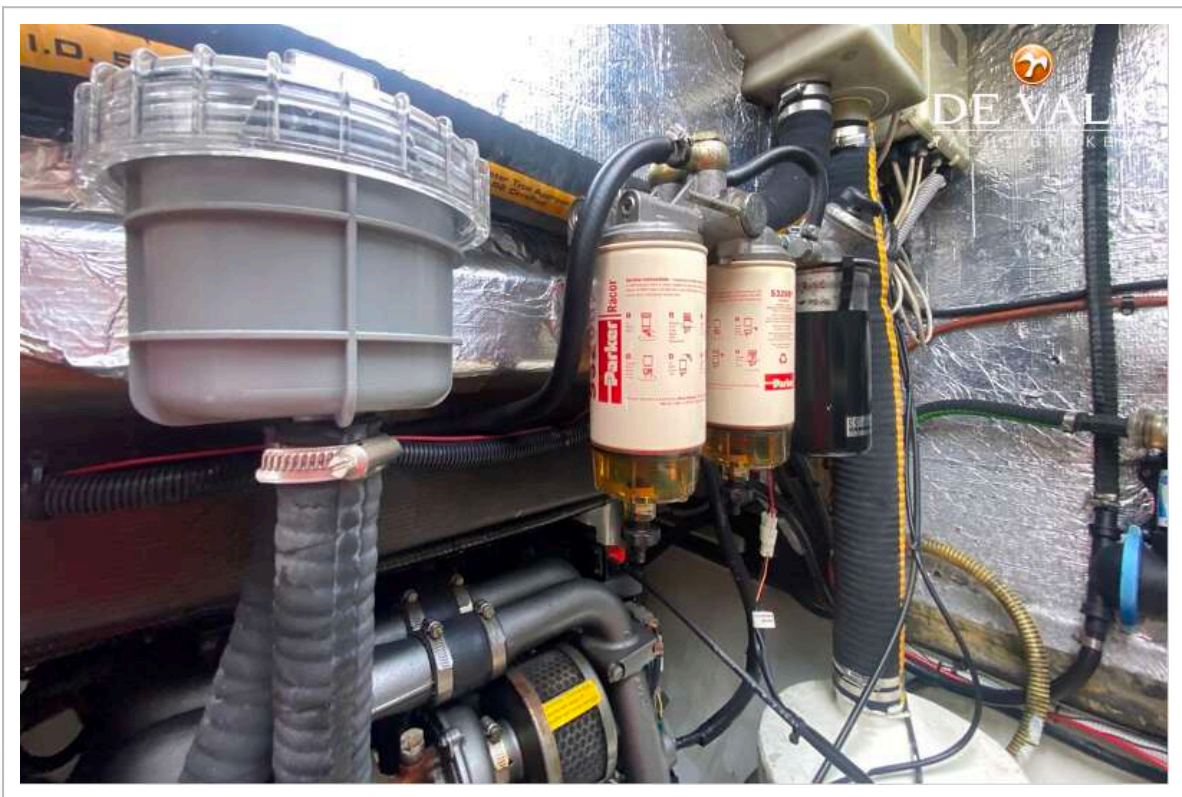
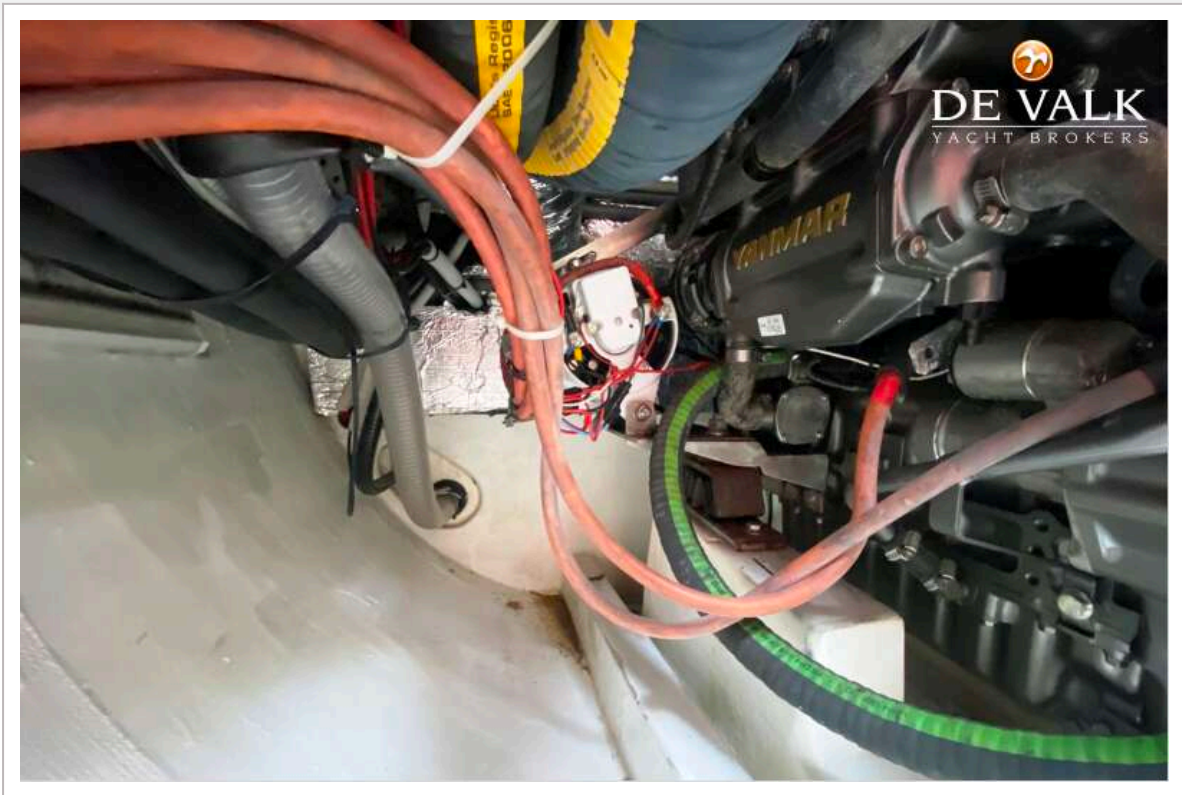


TAYLOR DAVIDSEN CATAMARAN TD547



TAYLOR DAVIDSEN CATAMARAN TD547







TAYLOR DAVIDSEN CATAMARAN TD547

