



DE VALK  
YACHT BROKERS



## STENTOR 15 OC



DE VALK  
YACHT BROKERS

## BROKER'S COMMENTS

"Stentor "Bolle" is now for sale! This is your chance to buy a unique motoryacht. Well equipped with stabilizers, airconditioning, satellite tv, bow and stern thruster she will offer you a comfortable stay on board. Built according CE-A norm she is able to sail all seven seas but with an air draught of only 3.30 meters she can also be used to explore the famous French channels. Don't hesitate to make an appointment for viewing."

## SPEZIFIKATIONEN

<b>Maße</b>	14,95 x 4,58 x 1,35 (m)	<b>Baumeister</b>	Stentor Yachts
<b>Baujahr</b>	2001	<b>Kabinen</b>	2
<b>Material</b>	Stahl	<b>Schlafplätze</b>	6
<b>Motor(en)</b>	1 x Perkins M185C Diesel	<b>Pk/Kw</b>	185 (pk), 135,98 (kw)
	VERKAUFT	<b>Liegeplatz</b>	contact Sneek

## KONTAKT

<b>Geschäftsstelle</b>	De Valk Sneek	<b>Telefon.</b>	+31 515 42 80 30
<b>Adresse</b>	Zwolsmanweg 7	<b>Fax</b>	+31 (0)515 42 80 39
	8606 KC Sneek	<b>E-Mail -Adresse</b>	sneek@devalk.nl
	The Netherlands		

## DISCLAIMER

Obwohl wir uns der Richtigkeit, Vollständigkeit und Aktualität unserer Informationen größte Sorgfalt widmen, können aus den Informationen keine Rechtsansprüche abgeleitet werden.



# STENTOR 15 OC

## GENERAL

Steel motoryacht STENTOR 15 OC "Bolle", built in 2001, dim.approx.: 14.95 x 4.58 x 1.35 m, air draught approx. 3.30 m, built by Stentor Yachts, designed by Vripack International Yachting, CE category A, steel decks, teakdeck in aft cockpit, steel superstructure, hardened glass in aluminum frames, multi chine hull, displacement approx. 28 tonnes, fuel capacity approx. 2x 900 liters and 1x 2000 liters in steel tanks, fuel day tank capacity approx. 100 liters, water capacity approx. 1x 2000 liters in stainless steel tank, grey water capacity approx. 1x 450 liters in stainless steel tank, black water capacity approx. 1x 450 liters in stainless steel tank, hydraulic steering, Simrad joystick, emergency steering.

## UNTERKUNFT

Classic mahogany interior, 2 cabins, 4+2 berths, green leather upholstery in wheelhouse with Recaro captains chair, dinette, headroom approx. 2.00 m, "basement" storage room in galleyfloor, 2x electric toilets, 2x shower, Kabola central heating (B12 TAP, diesel), Marine Air Climma airconditioning (20.000 BTU), galley with Bosch 4-burner ceramic stove, electric water pressure system with hydrofoor, hot water system with boiler and through Kabola, Bosch 180 liter refrigerator, Bosch 44 liter freezer, extractor, Bosch Gourmet Combi microwave, Candy combi wash/dryer machine.

## MOTOR(EN)

Single Perkins M185C, 185 hp diesel engine, intercooling with wet exhaust, V-drive with Hurth ZF hydraulic gearbox, stainless steel water lubricated propellershaft, 5-bladed propeller, 4x electric bilgepumps, 24V/220V electric circuit, 6x 200 Ah batteries, 8x 80 Ah batteries for bow- and sternthruster, shorepower with cable, Mastervolt 100 Amp 24V batterycharger, Mastervolt 25 Amp 24V batterycharger for bow and sternthruster batteries, Mastervolt 10 Amp 12V batterycharger for generator, Mastervolt 3000W/24V inverter, Mastervolt Whisper generator 12 kW, extra Mastervolt dynamo (100 Amp) on main engine for light and bow- and sternthruster, Sleiþner Sidepower bow- and sternthruster, 155 kgf, 24V), automatic fire extinguisher installation in engine room, Racor fuel filters and water separators.

## NAVIGATION

Simrad IS 15 compass, Simrad combi IS 15 echosounder/log, Simrad IS 15 wind, Shipmate RS 8300 VHF, Simrad RS 8400 DSC VHF, Simrad CR50 radar, Simrad Robertson autopilot, Simrad CR 50 GPS, Simrad CR 50 Plotter, Nav 4 Navtex + printer, Raytheon Ray 430 loudhailer with intercom and foghorn.

## AUSRUSTUNG

Rear view camera with LCD screen, Najadkoop stabilizers, KVH satdome, Nokia satellite receiver/decoder, Sharp flatscreen TV, Denon DVD/CD player with surround sound, Denon radio/cd player in ownerscabin and at workspace in saloon, hydraulic mast lowering system, sunawning, ITT Jabsco searchlight with remote control, Plastimo life raft, refrigerator in cockpit, washbasin with hot and cold water in cockpit, 2x lifebuoy, 2x Vetus stainless steel hydraulic windlass, 2x Lewmar capstan on aftdeck, 2x anchors, shower on deck (hot and cold water), deck wash installation, 5x wipers with interval, fenders, mooringlines, clock, barometer, cockpit cushions, cockpit table.



# STENTOR 15 OC





# STENTOR 15 OC



# STENTOR 15 OC

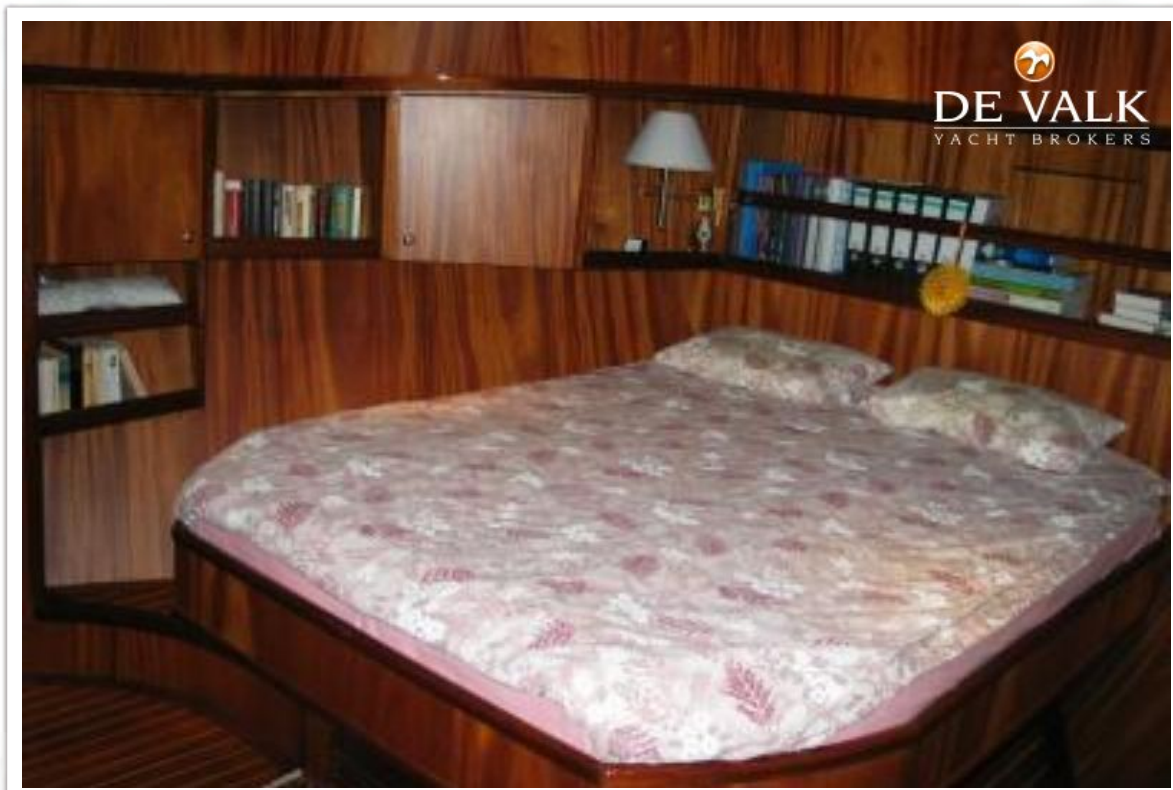


# STENTOR 15 OC





# STENTOR 15 OC





# STENTOR 15 OC

