



DE VALK
YACHT BROKERS



SINERGIA OPEN 40



DE VALK
YACHT BROKERS

KOMMENTARE DES MAKLERS

The Sinergia Open 40 is a hidden gem in the Mediterranean market, crafted by the renowned Spanish shipyard Sinergia, famous for building Volvo Ocean Race yachts. This 2005 model stands out for her uniquely spacious interior layout featuring two large cabins, each with own en-suite bathrooms which is rarely found in a 40ft sports cruisers. Comparable in style and purpose to the Fairline Targa 40 or Princess V40, the Sinergia Open 40 goes a step further in terms of interior finish and quality of joinery and woodwork. Not to be looked past, this vessel is in exceptional condition!

Tom Kingham

TECHNISCHE DATEN

Maße	11.95 x 3.65 x 1.00 (m)	Werft	Sinergia
Baujahr	2005	Kabinen	2
Material	GFK	Kojen	6
Motor(en)	2 x Volvo Penta KAD300 DP diesel	PS/kW	2 x 285.00 (PS), 209.76 (kW)
Verkaufspreis	€ 145.000 (MwSt. Bezahlt)	Liegeplatz	contact Palma

KONTAKT

Verkaufsbüro	De Valk Palma	Telefon	+34 971 402 911
Adresse	Port. Cala Nova, Avda. Joan Miro, 327 07015 Palma de Mallorca Spain	E-Mail	palma@devalk.nl

HAFTUNGSAUSSCHLUSS

Diese Angaben erfolgen nach bestem Wissen, können jedoch nicht garantiert werden.



ALLGEMEIN

Modell	SINERGIA OPEN 40
Typ	Motoryacht
Rumpflänge (m)	11,95
Breite (m)	3,65
Tiefgang (m)	1,00
Baujahr	2005
Werft	Sinergia
Land	Spanien
Gewicht (t)	7,9
Rumpfmaterial	GFK
Material Aufbauten	GRP
Deckmaterial	GRP
Deck Finish	Non-skid
Deck Finish Aufbauten	GRP
Pflicht Bedeckung	Teak
Antifouling (Jahr)	2025
Fenster Einfassung	Stainless steel
Fenster Material	Glass
Decks Luke	Forward
Treibstofftank (Liter)	350
Treibstofftank 2 (Liter)	350
Füllstandsanzeige (Treibstofftank)	Yes
Trinkwassertank (Liter)	Yes but litres unknown
Fäkaelien Tank (Liter)	Yes but litres unknown
Radsteuerung	Hydraulic
Innerhalb Steuerung	Cockpit starboard
Weitere Info Rumpf	Polished April 2025

UNTERKUNFT

Kabinen	2
----------------	---



Kojen	6
Innen	Cherry wood
Fussboden	Teak laminate
Offenen Cockpit	With BBQ and drinks cooler with H+C tap
Standhöhe Salon (m)	2.00
Klima Anlage	Webasto with outlets in cabins and saloon
Achterkabine	Yes
Dinette zum umbauen	2 berths
Umbaubar Koje	Sunpad in cockpit 2 additional berths
Schiebetür zum Cockpit	Yes
Kombüse	Yes
Arbeitsfläche	Corian
Spülbecken	Stainless steel
Herd	Bosch ceramic hob
Mikrowelle/Backofen Kombi	Samsung 2021
Kuhlschrank	Replaced 2015
Weinkühler	In cockpit
Warmwasser System	240V
Eignerkabine	Forward
Länge Bett (m)	King with custom mattress
Kleiderschrank	Shelves and drawers
Badezimmer	En-suite
Toilet	Yes
Toilette System	Electric
Handwaschbecken	Yes with Corian countertop
Dusche	Yes
Gästekabine 1	Aft guest cabin
Länge Bett (m)	Twin singles with cushion infill
Kleiderschrank	Shelves and drawers
Badezimmer	En-suite
Toilette	Yes
Toilette System	Electric



Handwaschbecken	Yes with Corian countertop
Dusche	Yes
Tender garage	Tender on bathing platform lifted by passerelle
Weitere Info	Hot water tank with calorifier 2019
Weitere Info	LED lights throughout

MASCHINEN

Motoranzahl	2
Marke	Volvo Penta
Typ	KAD300 DP
PS	285
kW	209.76
Kraftstoffart	Diesel
Installiert im Jahr	2005
Höchstgeschwindigkeit (Kn)	36
Marschgeschwindigkeit (Kn)	25
Motorstunden	Starboard 1381 & Port 1378
Antrieb	Heckantrieb
Motor bedienung	Helm station or handheld yacht controller
Bugschraube	Lewmar
Propellerblätter	Duo props contra rotating
Elektrische Bilgenpumpe	Yes
Bilge Alarm	Yes
Generator	Dynamica 6.5kW
Batterien	2 x domestic batteries NEW 2023
Starterbatterie	2 x 95 amp/hr
Batterie Ladegerat	Upgraded MasterVolt
Umwandler	1200 inverter
Landstrom	With cable
Trimklappen	Bennett
Weitere Info	Boat out of water for 3 weeks April 2025



Weitere Info

Yacht controller docking system - remote NEW 2021

Weitere Info

Sterndrive Antifoul 2025

NAVIGATION

Kompass

Magnetic

Multi Control Display

Garmin with sonar 2013

UKW

M-tech DSC VHF Radio 2014

Portabel UKW

ICON VHF

Autopilot

Raymarine with upgraded course computer 2012

Plotter

Raymarine

Radar/Plotter

Raymarine pathfinder

Epirb

Yes

Weitere Info

Helm station with carbon panel finish

Weitere Info

Storage lockers throughout cockpit

AUSRÜSTUNG

Feste Fenster

Yes

Spritzverdek

Full canopy

Feste Haube

Not fixed, full navy blue canvas top

Kuchenbude

Yes with cockpit sunscreens

Winterplane

Yes

Cockpit Polster

Aft cushions recovered 2023 - Sunbrella fabric

Cockpit Tisch

Cherry teak wood that converts into sunpad

Badeplattform

Yes with dinghy

Bugtreppe

Yes

Gangway

Hydraulic

Heckdusche

Hot and cold shower

Ankerwinde

Lofrans

Gangspill

Yes

Rettungsinsel

Yes with 6 pax

Horn

Yes



Radar Reflektor	Yes
TV	LG TV 2020
DVD Spieler	Energy DVD player 2020
I-Pod Anschluss	Yes
Lautsprecher im Pflicht	Clarion
Lautsprecher im Salon	Clarion
Feuerloscher	Automatic in engine room



SINERGIA OPEN 40



SINERGIA OPEN 40



SINERGIA OPEN 40



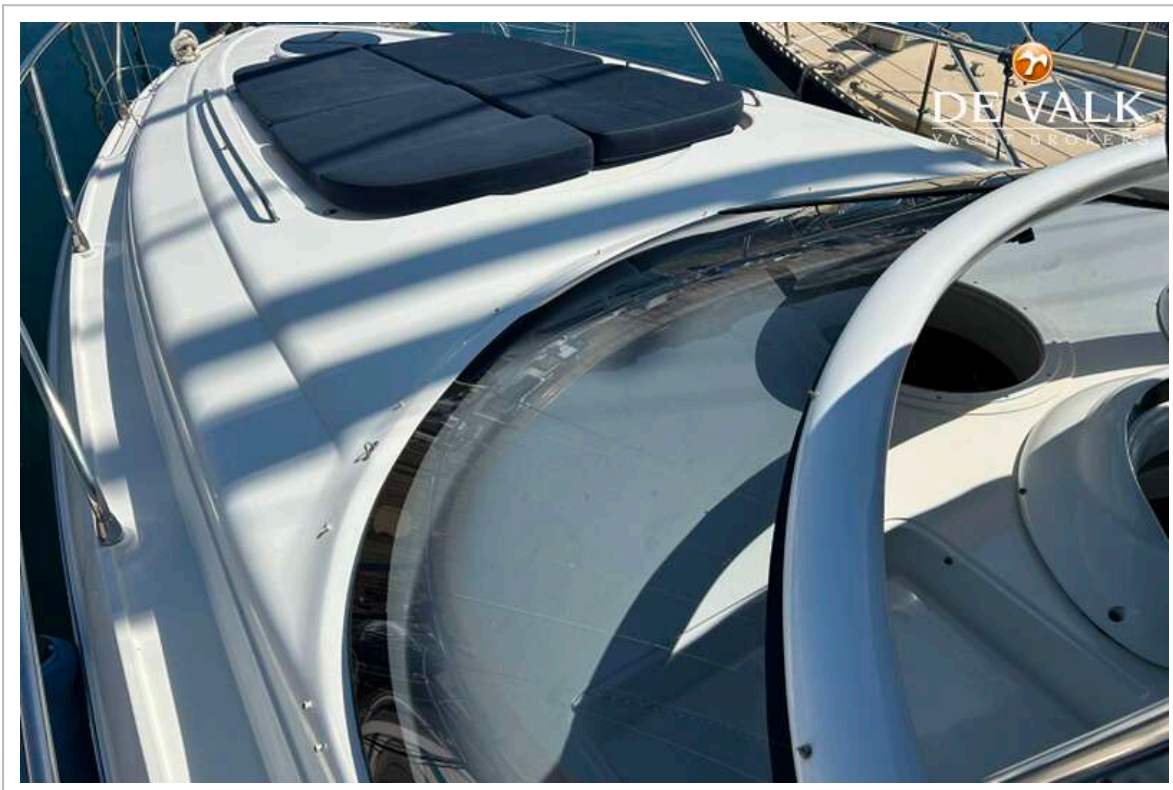
SINERGIA OPEN 40



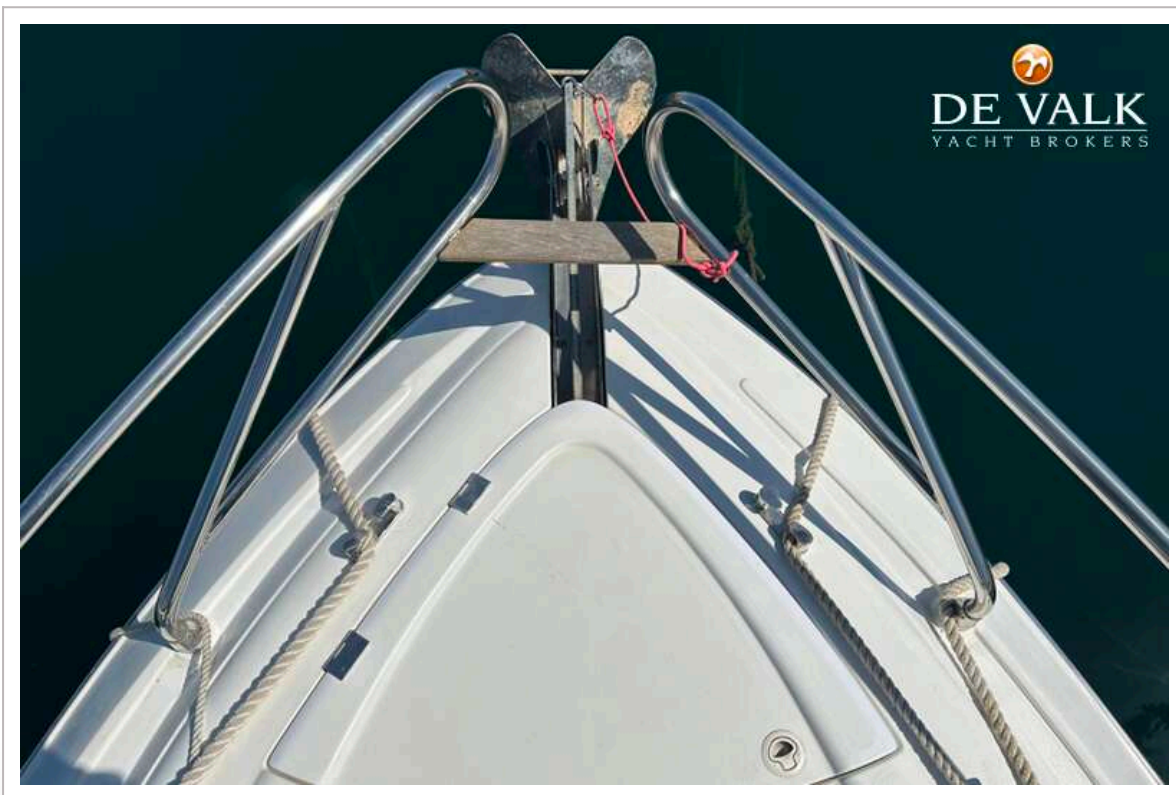
SINERGIA OPEN 40



SINERGIA OPEN 40



SINERGIA OPEN 40



SINERGIA OPEN 40



SINERGIA OPEN 40



SINERGIA OPEN 40



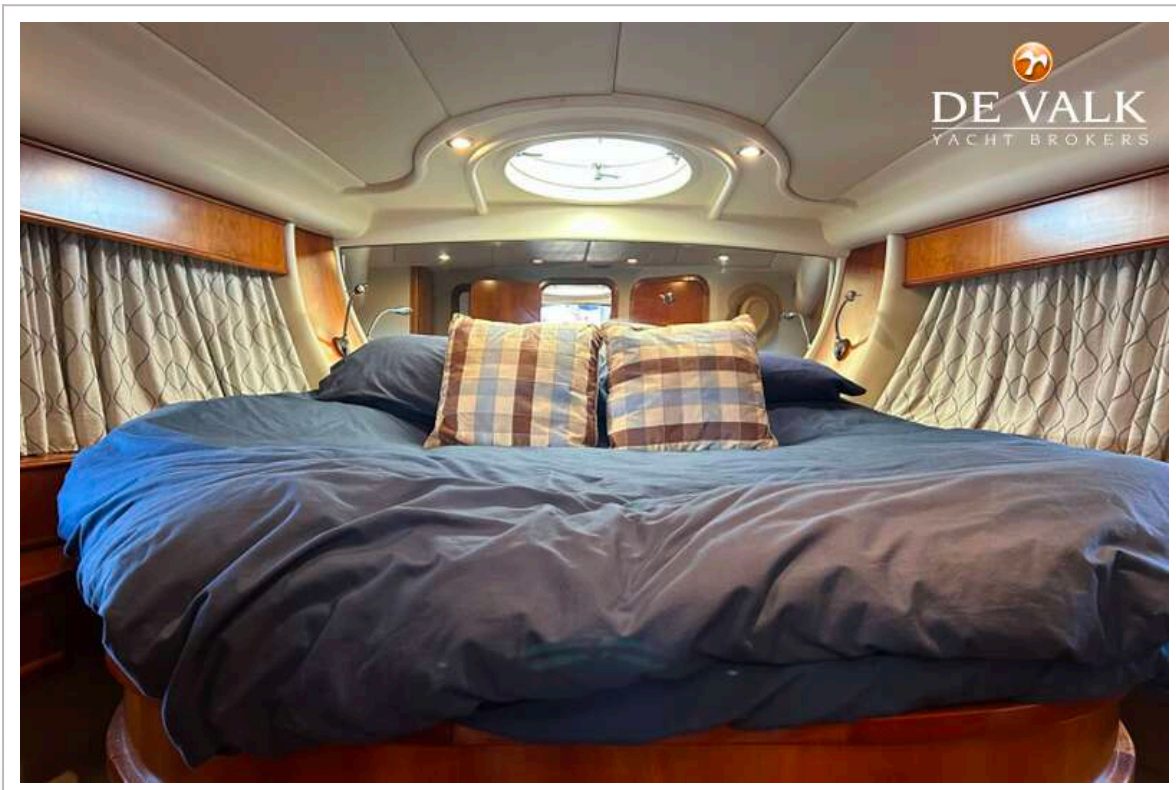
SINERGIA OPEN 40



SINERGIA OPEN 40



SINERGIA OPEN 40



SINERGIA OPEN 40



SINERGIA OPEN 40

