



DE VALK
YACHT BROKERS

ROYAL HUISMAN 2600



DE VALK
YACHT BROKERS

KOMMENTARE DES MAKLERS

This unique aluminium sailing yacht was designed by Sparkman & Stephens, built by the renowned Royal Huisman shipyard and her interior was designed by Pieter Beeldsnijder. EBB TIDE is very easy to sail & handle with 2 persons, but it is also a lot of fun & even easier with a larger crew. The present owner upgraded & maintained her very good since more than 15 years. At this moment hull, deck & superstructure are being painted. EBB TIDE is now looking for a new owner, who wants to take this quite fast yacht out for new adventures. Contact us for an appointment in Italy.

Jan-Ward van Dantzig

TECHNISCHE DATEN

Maße	26.00 x 6.00 x 3.00 (m)	Werft	Royal Huisman Shipyard
Baujahr	1986	Kabinen	4
Material	Aluminium	Kojen	10
Motor(en)	1 x Mercedes Benz OM-422 Wizeman Marine diesel	PS/kW	265.00 (PS), 195.04 (kW)
Angebotspreis	€ 875.000 (MwSt. Beahlt)	Liegeplatz	Italien

KONTAKT

Verkaufsbüro	De Valk Thuishaven	Telefon	+31 35 5829042
Adresse	Peperstraat 7 1411 PX Naarden NL	E-Mail	thuishaven@devalk.nl

HAFTUNGSAUSSCHLUSS

Diese Angaben erfolgen nach bestem Wissen, können jedoch nicht garantiert werden.



ALLGEMEIN

Modell	ROYAL HUISMAN 2600
Typ	Segelyacht
Rumpflänge (m)	26,00
Wasserlinienlänge (m)	20,93
Breite (m)	6,00
Tiefgang (m)	3,00
Durchfahrtshöhe (m)	31,50
Stehhöhe (m)	1,95
Baujahr	1986
Werft	Royal Huisman Shipyard
Land	Niederlande
Entwerfer	Sparkman & Stephens+Pieter Beeldsnijder
Gewicht (t)	59,5
Ballast (Ton)	Blei 17,5
Brutto tonnage	65
Netto tonnage	19
CE Norm	NA
Rumpfmateral	Aluminium
Rumpffarbe	Weiß (One component from International - new in 2024/2025)
Haut-dicke Rumpf (mm)	Built in 5 mm above waterline and 6-8 mm below waterline. Hull thickness inspection report available from 28-12-2022.
Rumpfform	Rundspant With negative stern. Construction with raked bow.
Art Kiel	Semi long keel
Material Aufbauten	Aluminium (Water resistant aluminium) Painted White (2-component Awl-Grip)
Haut-dicke Aufbauten (mm)	5
Haut-dicke Deck (mm)	5
Stossliste	Aluminium
Deckmaterial	Aluminium (Water resistant aluminium) Painted White (2-component Awl-Grip)
Deck Finish	Teak 6 - 8 mm - Entirely recaulked in 2018



Deck Finish Aufbauten	TBS Antirutsch Belag
Pflicht Bedeckung	Teak
Antifouling (Jahr)	2025
Dorado Belufter	ja
Fenster Einfassung	Aluminium 7 x Window in the superstructure
Fenster Material	Sicherheitsglas 6 mm (single). 4 x Window are opening & have insect screens
Decks Luke	ja
Bullauge	Edelstahl
Isolation	Schaum & sound damping foil at hull down to waterline & superstructure
Treibstofftank (Liter)	Aluminium 2 x 1000 (double bottom tanks with inspection manhole)
Treibstofftank 2 (Liter)	Aluminium 1 x 690 & 1 x 630 (double bottom tanks with inspection manhole)
Füllstandsanzeige (Treibstofftank)	Cross over pipes (with valves) between tanks
Treibstoff Tankestank (Liter)	Aluminium 90
Füllstandsanzeige (Tankestank)	Electronic/high/low/level meter/alarm & automatic & refill pump
Trinkwassertank (Liter)	Aluminium 880 & 700 & 670 & 650 (double bottom tanks & inspection manhole)
Füllstandsanzeige (Trinkwasser)	Tanks are installed around keel section to enable most ideal ships trim. Cross over pipes (with valves) between tanks. Tanks innerside painted.
Fäkalien Tank (Liter)	Edelstahl 1 x 200 (double bottom SS-Alu-GRP tank with inspection manhole)
Füllstandsanzeige (Fäkalientank)	Electronic high/low level meter & alarm. Automatic direct overboard discharge pump. Vent system to hull. Separate manual discharge pump system to enable discharge to shore. Tank is installed amidships for ideal ships trim.
Fäkalien Tankablauf	Pumpe
Grauwassertank (Liter)	Aluminium 2 x 200 (double bottom tanks with inspection manhole)



Füllstandsanzeige (Grauwasser)

Electronic high/low level meter & alarm. Automatic (level switch) / manual direct overboard discharge pump. Vent system to hull. Discharge from showers and galley by sump reservoirs and automatic pumps direct to grey water tank. Tanks are installed amidships for ideal ships trim.

Radsteuerung

hydraulik Stainless steel wheel - 1800 mm.

Aussen Steuerung

ja

Not-Pinne

ja

Weitere Info Rumpf

The hull built in water-resistant aluminium of 5 mm above waterline and 6-8 mm below waterline, with keel plating of 10 mm, keel bottom of 20 mm. Transverse framing of 75x32x6 each 455 mm and web frames of 128x50x8.

Weitere Info Farbe und Anstrich

Hull, deck and superstructure painted white in 2024/2025. When the engine room was completely stripped during the major refit in 2010, the engine room and also the bilges were finished in a glossy white paint. Hull inner side is painted grey.

Weitere Info

Aluminium rudder fitted to a skeg. Hydraulic driven steering gear (2x24V servo's for Ap28 autopilot) + 220 Volt system/pump for AP70 Autopilot. Chain direct to wheel steering/direct drive. Double acting hydraulic ram. Total reduction 1:2,5. Disengagement unit/and/steering wheel brake.

Weitere Info

The toerail is aluminium with fairlead holes. Forepeak watertight compartment by bulkhead. Bulkheads aft of owners cabin, cabins and engine room area, as to ensure a stiff hull. All water inlets have been renewed in 2012 - Conventional handle - bronze ball type seacocks valves. All tanks are inspected yearly. Teak planking on deck laid in an epoxy compound over an underlayment in a bedding compound over the aluminium deck. In 2018 the most forward teak planking was renewed. 2 x Prism model deck build in deck lights. Stainless steel deck fittings, hardware and bollards (with "Ebb Tide" written on the top). Cockpit lockers seats with gas cylinder hatch levers.



Weitere Info

EBB TIDE is one of the few famous ocean cruiser-racing yachts, based on the popular concept of the smaller Nautor Swan 65. She is a timeless and very well built and well-maintained yacht with an elegant and well thought out luxury interior that breathes a pleasant sailing atmosphere. It is a great yacht to sail in comfort around the world. Logic set-up sailplan for shorthanded sailing and cockpit push button control. The aft cockpit is a perfect open air observation & steering station area, offering superb 360 degrees visibility, well sheltered separate steering & being also a separate private owners cockpit when at anchor. There has been an Italian captain on the boat in the last 13 years. Please contact us for more information !

UNTERKUNFT

Kabinen	4
Kojen	10
Mannschaftskabine	1
Mannschaftskojen	3
Innen	Teak (fine selected). Semi classic/modern style - very good condition
Fussboden	Teak With a carpet (which needs to be renewed)
Salon	Very spacious
Standhöhe Salon (m)	2,05
Heizung	Zentral Warmwasser New in 2010 : Eberspacher - Heavy Duty. Capacity 20.000 kCal.
Heizung 2	Airconditioning reverse cycle heating (new in 2023)
Klima Anlage	Klima mit Ruckzyklus New in 2023
Navigation Zenter	Completely renewed in 2010. The dual navigators seat offers an excelent overview of the navigation control centre. Logically professional instruments and monitoring set-up for easy readability & Yacht's Control. There is a lot of lockerspace for manuals, sea-charts & others incl. safety.
Kartentisch	On starboard side, next to the main entrance. Headroom : 2,10 m
Achterkabine	Accessible via aft corridor & via own steering cockpit entrance
Speisezimmer	Very spacious



Tür zum Cockpit

To both cockpits

Kombüse

The galley is semi separate and logically centralised located amidships (on port side) between centre deck cockpit & dining/saloon. Cupboard / Locker / Drawer / Space, fitted out for seaworthy stowing. Headroom : 2,05 m

Arbeitsfläche

Corian (White)

Spülbecken

Edelstahl 2 x

Herd

Gas Miele : 2x ring gas & 2x ring electric with ss pan-holder

Ofen

New in 2020 : Miele with grill (220 Volt - stainless steel body) - combined installed under the cooker - which is semi-cardanic mounted

Dunstabsauge

Alpes

Gas-Alarm

ja

Mikrowelle/Backofen Kombi

Bosch (220 Volt)

Kuhlschrank

2 x Custom made (220 Volt) stainless steel drawer (each 80 Litre & individual temperature control) with 1 x individual compressor (New in 2011). 1 x Custom built stainless steel top loader fridge (± 240 Litre & 1 x individual compressor). The compressors have their cooling from a hull integrated tank with a mix of cooling fluid/fresh water. In case that the temperature in this tank runs to high, an extra system can cool this tank with sea water. Further an economy switch levels the power consumption of both fridges while in inverter mode.

Gefrier Truhe

1 x Custom made (220 Volt) stainless steel top loader (250 Litre & individual temperature control) with 2 x individual compressor (New in 2011). The compressors have their cooling from a hull integrated tank with a mix of cooling fluid/fresh water. In case that the temperature in this tank runs to high, an extra system can cool this tank with sea water. Further an economy switch levels the power consumption of the freezer while in inverter mode.

Warmwasser System

220V + Motor 70 Liter boiler

Wasserdruck System

elektrisch 220V Hydrophore pump+pressure tank & 3x 24V pump & Carbon filter

Hand und/oder Fusspumpe

In the galley

Geschirrspulmaschine

Miele (220 Volt)



Eismaschine	New in 2020 : Icerette (220 Volt), directly connected to the freshwater system.
Kaffeemaschine	Nespresso
Geschirrausstattung	Chinaware & Glassware/crystal & Luxury cutlery for 8 persons & pots and pans & toaster.
Eignerkabine	Doppelbett In the aft cabin - Headroom : 1,94 m
Länge Bett (m)	2,05 x 1,40
Kleiderschrank	hängend/Schublad/Regale
Badezimmer	en suite Headroom : 1,95 m. CV heated towel rack.
Toilet	en suite In the bathroom
Toilette System	elektrisch Sealand - Vacuum - fresh water flush
Handwaschbecken	im Badezimmer
Dusche	en suite Headroom : 1,97 m
Gästekabine 1	Stockbett Starboard front cabin - Headroom : 2,07 m
Länge Bett (m)	1x 2,05 x 1,10 & 1x 2,05 x 0,70
Kleiderschrank	Regale und hängend
Badezimmer	en suite Headroom : 2,10 m with Radiator CV heated towel rack
Toilette	en suite In the bathroom
Toilette System	elektrisch Sealand Vacflush - Vacuum - fresh water flush
Handwaschbecken	im Badezimmer
Dusche	en suite In the bathroom
Weitere Info	Lower wide (lovers) berth. Both berths with duvet and lee-cloth protection.
Gästekabine 2	Stockbett In the portside front cabin - Headroom : 2,07 m
Länge Bett (m)	1x 2,05 x 1,10 & 1x 2,05 x 0,70
Kleiderschrank	Regale und hängend
Badezimmer	gemeinsam (With the crew) - Headroom : 2,10 m. CV heated towel rack.
Toilette	gemeinsam
Toilette System	elektrisch Sealand - Vacuum - fresh water flush
Handwaschbecken	im Badezimmer
Dusche	gemeinsam



Weitere Info	Lower wide (lovers) berth. Both berths with duvet and lee-cloth protection.
Gästekabine 3	Or Crew Cabin - In the bow - Headroom : 1,88 - 2,05 m
Länge Bett (m)	Bunk bed: 1,97x0,70 & 1,97x0,98 & Port Side bed: 1,95x0,88
Kleiderschrank	Regale und hängend
Weitere Info	It seems possible to alter this crew cabin into a 2 persons crew or guest cabin with an en-suite bathroom. This cabin has a separate acces for the crew to deck for optimized owners privacy.
Waschmaschine	Bosch 8 Kg (220 Volt)
Weitere Info	The 24 Volt interior lights have been changed to LED in 2012. Some 220 Volt bulbs in cabins and dimmable spots. Indirect / cove / flood lighting, emergency lighting & courtesy (red) night lights. Pilot berth (2,15 x 1,05 m) in corridor (Headroom : 1,87m) to aft cabin. All mattresses on slatted berths (except the pilot berth) with luxury bedding & various towels with EBB TIDE. Natural & mechanical air ventilation throughout the yacht by hatches & stainless steel dorades. Mechanical & electric air ventilation in the bathrooms.
Weitere Info	Additional information Air-conditioning; Twin compressors for main saloon, galley & all cabins, all thermostatically controlled. The airco system is calculated that at an outside temperature of approx. 32 degrees Celsius an inside temperature of approx. 20 degrees Celsius can be achieved, at a sea water temperature of approx. 28 degrees Celsius. The Airco reverse-cycle Heating system is calculated that at an sea water temperature of approx. 10 degrees Celsius an inside temperature of approx. 20 degrees Celsius can be achieved.

MASCHINEN

Motoranzahl	1
Marke	Mercedes Benz OM-422
Typ	Wizeman Marine
PS	265
kW	195.04
Kraftstoffart	Diesel
Installiert im Jahr	2010



Höchstgeschwindigkeit (Kn)	10,5
Marschgeschwindigkeit (Kn)	8,5
Verbrauch (l/h)	20
Motorstunden	2457
Kühlungssystem Motor	indirekte Wärmetauscher
Antrieb	V-drive
Welle Dichtung	ja
Motor bedienung	pneumatisch Mannesmann Rexroth Micro Commander control system at steering
Gewende getriebe	hydraulic Twin Disk, MG 509, reduction i = 1.45
Bugschraube	hydraulik Retractable Sauer-Danfoss 22 Hp (2010 & partly overhauled 2023)
Exhaust	wassergekühlt With a waterlock & water - exhaust gas separator
Wellen Drucklager	ja
Propeller Typ	Segelstellung & electric variable pitch. Hundested VP5FR
Propellerblätter	3 - bronze skew back. Total overhaul by manufacturer in 2011
Material Propellerwelle	Edelstahl (type 316) approx. 62,5 mm
Propellerwelle schmierung	Öl /greasing/lunricating system. Overhauled by manufacturer in 2011
Hand Bilgenpumpe	2 x
Elektrische Bilgenpumpe	2 x 24 Volt pump for forepeak & saloon. 1 x 220 Volt pump for engine room- & saloon bilge, with automatic/manual controlled/float switch. 3 x Automatic 24 Volt submersible pumps with automatic level switches for individual compartments including lazarette. Heavy Duty pump mounted on the main engine with manifold to engine room and saloon bilges. Compartments, direct overboard. Bilge pump engine room has a separate manifold function to suck oil into cannister.
Bilge Alarm	ja
Elektrische Anlage	12, 24, 220 & 380 Volt
Generator	leise Separator Fisher Panda 30/4HD PMS (2024) 25 kW (at 1500 rpm) 230V 1-phase
Betriebstunden Generator	ja
Generator 2	leise Separator Fisher Panda 12000 NE PMS (2011) 9 kW (at 3000 rpm) 230V



Betriebsstunden Generator 2	ja
Batterien	Emergency bank : 24 Volt New in 2012 : 2 x 12 Volt gel batteries 160 Ah for VHS/SSB. Seaworthy stowed in boxes under lazarette. Emergency by-pass switch for start/service batteries.
Starterbatterie	New in 2019 : 2 x 24 Volt 135 Ah Gel battery. Seaworthy stowed in boxes in corridor.
Versorgungsbatterie	New in 05/2021 : 10 x 24 Volt Liontron Lithium battery 100 Ah (1000 Ah in total) - Integrated battery management system. Seaworthy stowed in boxes in engine room.
Navigationsbatterie	New in 2012 : 24 Volt 24 x 2 Volt maintenance free battery (total of 840 Ah). Seaworthy stowed in boxes under saloon floor.
Generatorbatterie	New in 2019 : 1 x 12 Volt 135 Ah Gel battery. Seaworthy stowed in box under navigation centre.
Batterie Monitor	ja
Batterie Ladegerat	4 x Mastervolt 24V/75A & 1 x Mastervolt 24V/50A
Umwandler	1 x Mastervolt 24V/3000 Watt & 1 x Mastervolt 24V/5000 Watt (New in 2012) supplying 220 Volt to outlets in throughout accomodations. Also suitable for \pm 10 hours silent mode at anchor or cruising under sail. 1 x Victron Phoenix Pure Sinewave 24V/250 (for Wifi). 1 x Alfatronix 24V/12V converter
Dioden-Batterie-Koppler	ja
Landstrom	mit Kabel 2 x 25 m with waterproof 32 A 220 V plugs
Trenn transformator	2 x Ship shore separator 22A/50Hz frequency converter in aft peak. 1 x Global Power transformer (needs to be checked) 50-600V / 50-60Hz (Proper working not guaranteed).
Wasserbereiter	1 x Compagnie Hydrotechnique 24 Volt (New in 2019) Capacity approx. 60 l/hr = approx. 1200 l/24hr & 1 x Sea Recovery type Aqua Whisper dx 220 Volt (New in 2012) Capacity approx. 115 l/hr = approx. 2500 l/24hr.
Weitere Info	2 x 24 Volt approx. 120 A & 1 x 12 Volt approx. 80 A alternator on the main engine.



Weitere Info

Additional information Fisher Panda 30/4HD PMS 25 kW generator; Installed in a stainless steel sound shield box, driven by a new engine (new in 2024). GRP Whisper type exhaust with waterlock & water/exhaust gas separator. Consumption approx. 4 l/hr. Start & stop controls at engine room & corridor. Automatic stop when cooling water/oil/overload alarm. Additional information Fisher Panda 12000 NE PMS Compact Power 9 kW generator; Installed in a GRP sound shield box, driven by 4 cylinder diesel. GRP Whisper type exhaust with waterlock & water/exhaust gas separator. Consumption approx. 2 l/hr. Start & stop controls at steering station & engine room & corridor. Automatic stop when cooling water/oil/overload alarm. Generator engine last serviced in 2023. One generator running for approx. 8 hours is sufficient for approx. 24 of electric power in anchor or sail mode (excluding airco).



Weitere Info

6 Cylinder engine with Turbo charging. Separate (environment friendly) bilge under the main engine. Separate external oil cooler includes, gearbox hydraulic oil. The Twin Disk gearbox is installed with separate oil cooling heat exchangers and flexible couplings. Trolling valve system for manoeuvring at extra reduced propeller speed. V-drive prop shaft set-up. Twin Racor, Separ type fuel filters between the main tank and day tank, main engine and between day tank and main engine. 1 x Racor fuel filter for the generators and the heating system. Fuel transfer system manual/electric with manifold between main tank and day tank. The engine room is isolated with aluminium sheeting down to the waterline. Rubber-lead-lined sound isolation between the engine room and accommodation walls. Where required, the installations in the engine room have been installed on rubber mounts. Provisions are made in the yacht's construction to lift the entire main engine and generator outside through a soft patch in the centre cockpit. The engine room is equipped with a heavy duty mechanical ventilation system. Under pressure vent system to avoid smell in the accommodation. The engine start & stop controls, acoustic engine alarms, exhaust temperature meters and analogue/digital meters at both the steering station in the aft cockpit as in the engine room. 220 Volt TL-lamps & 24 Volt LED light in the engine room. The bow thruster is hydraulic/electric/360 degrees. Controlled in steering cockpit with joystick. Hydraulically driven by PTO from the main engine. Bow thruster has a separate hydraulic oil tank. Professional electrical installation by Huisman & refit (2010/2011) by Yacht Electronic Hamburg Holland. Many electrical parts within system renewed in 2010/2011. Separate main panels, switchboards for 12/24 Volt & 220/380 Volt, including automatic fuse-breaker switches, in the engine room and fuse-breaker switches, control panel in corridor near the navigation station. Several Voltage/Ampere meters and low voltage alarm. Charge/discharge meters. Several 24 & 220 Volt sockets. Manual supply take over.

NAVIGATION

Kompass

1 x Suunto 6 1/2" (New in 2019) on the steering pedestal & 2 x deck built in compasses on SB and Port of aft cockpit (not functioning anymore, but kept for decoration) & 1x Sestrel Handheld Compass.



Elektrisches Kompass	1 x Furuno Digital Compass at the navigation desk and in both cockpits & 1 x Simrad type GC80 Gyro Compass (New in 2021) - interfaced to GPS/Autopilot/Radar/Chartplotter. Each of the above specified compasses can back-up the other. By GPS/ and read-out of autopilot.
Multi Control Display	ja
Tiefenanziege	New in 2023 : Furuno analogue/digital
Tiefenanziege/Logge	ja
Logge	New in 2023 : Furuno analogue/digital
Windlupe anzeige	New in 2023 : Furuno analogue/digital (speed,direction,angle,CH)
Tochter anzeige	New in 2023 : Furuno in both cockpits
UKW	New in 2012 : 2 x Sailor VHF Thrane & Thrane 6222A with GMDSS distress button & repeater (1 x in the owners cabin & 1 x in the steering cockpit)
Portabel UKW	New in 2012 : 3 x Simrad / Walkie Talkies type Axis 50GMDSS waterproof
Autopilot	1 x Furuno (New in 2023), linked to navigation computer in steering cockpit & hydraulic steering drive unit (New in 2023) & 1 x Furuno (New in 2023) with 2 x screen (at the navigation desk & in the steering cockpit) & Satelite compass & remote control (cable) & hydraulic steering drive unit (New in 2023).
Ruderwinkel Anzeige	Via both autopilots
GPS	1 x Simrad MX510 & 1 x Simrad MX512
Radar/Plotter	New in 2023 : Furuno 24VD with RCU-014 key-board
Radar/GPS/Plotter	1 x Simrad NSE 8 (New in 2017) with integrated X-band radar. In combination with a Ecdis colour display at the navigation desk and a Simrad CS68 display in the owners cabin. ECDIS Computer software installed on two individual PC's (1 x for system at the navigation desk & 1 x for the system in the owners cabin). This chart plotter is linked to the AP70/80 autopilot at the navigation desk for automatic track following.
Navtex	Furuno Navtex Receiver NX-700
PC Computer	New in 2023 : Windows with own display at navigation desk
PC Anschluss	ja



WIFI Antenne	Wifi modem, Reach as usual for GSM in coastal waters. 1 x WiFi Switch8 - 60 W. Second WiFi as spare installed. Maretron Internet Protocol Gateway
Elektronische Kart(en)	Navionics charts
AIS Transceiver	True Heading AIS Vision Pro
Radio Empfänger	ja
Sender Vorrichtung	New in 2012 : Sailor HF Thrane & Thrane SSB type 6301 MF/HF with DSC (Digital Selective Calling) & GMDSS distress button
Epirb	New in 2012 : Handheld Jotron Tron 40GPS US (World wide satellite emergency beacon, mounted on mizzen mast with a hydrostatic release).
"MUB" Sender	2 x McMurdo S4/1033010 Hand-held (New in 2012). Search & Rescue transponder for radar detection.
Navigation Beleuchtung	Certified LED type as per international rules. Includes red over green & not under command. New in 2012 : 24 Volt LED navigation lights. In booms integrated 24 Volt LED cockpit lights. 24 Volt LED spreader deck lights. Removable light for Centre Cockpit.
Suchscheinwerfer	24V, installed on mizzen mast, controlled from steering cockpit
Weitere Info	EBB TIDE is equipped with a most professional navigational, very rarely seen on this size of yachts, with safety and back-up systems. 2 x Sailor Thrane & Thrane TT3026C Inmarsat-mini C (2011), each with their Sailor Display and linked to a printer. Anti-piracy distress system with alarm buttons at various locations on board. 2 x Sailor Thrane & Thrane AP5042 Ship Security Alert & Alarm system for Inmarsat includes GMDSS distress button (upon press button the system automatically alerts coastguard with Yacht's name & position). 2 x EGS (Enhanced Group Call) if outside Navtex coverage.
Weitere Info	Phone is possible by Immarsat Fleet. Set of international code & nation guests flags. Various out-dated Admiralty paper charts & Nautical/Pilot books.

AUSRÜSTUNG

Spritzverdek	New in 2018 : 1 x Blue for steering cockpit & 1 x Blue for midship cockpit with stainless steel frame
Kuchenbude	New in 2018 : 1 x Blue over midship cockpit



Bimini	New in 2018 : 1 x Blue over steering cockpit & 1 x Blue over midship cockpit with stainless steel frame
Sonnenschirm	Over the main boom
Winterplane	Over the entire yacht
Cockpit Polster	Blue, for both cockpits
Cockpit Tisch	Lacquered teak with folding sides panels (to create a very large table) in the midships cockpit.
Badeleiter	Edelstahl & a stainless steel bathing ladder on either SB or Port side
Gangway	New in 2023 : Designed and Custom Made entirely according to the owner's wishes; wider than the standard gangways, in stainless steel, the walking surface is in a teak grating, equipped with a removable handrail on both sides, easily foldable (into 3 parts) and to store directly in front of the opening gate on the stern.
Heckdusche	Hot and cold pressured water - deck integrated on Port side
Anker	CQR Pflugschar 180 Lbs galvanised anchor stowed on deck in bow anchor roller
Ankerkette	120 m - 13 mm galvanised anchor chain, stowed in separate centered chain locker (free from the hull). Chain end secured by cut/release. Chain length counting by colour indication.
Anker 2	Danforth With 120 m - 18 mm Nylon anchor line
Ketten Zähler	ja
Ankerwinde	hydraulik Lofrans Titan B, 2000W/24V/pulling power 1000 kg with a cover
Gangspill	Electric vertical type of anchor winch. Stainless steel chain stopper. Windlass controlled by remote control/deck built in push-buttons.
Deckwasche	220 Volt electric Heavy Duty pump. Sea water/Fresh water system with outlets on foredeck with hose.
Beiboot	fest Rumpf New in 2024: Highfield RIB with an aluminium hull (with a cover)
Ausserborder	Yamaha 15Hp 4-stroke (New in 2011, overhauled in 2023)
Ausserborder Halterung	ja
See Reling	Draht/Seil Double wire - 90 cm high
Zupackenschiene (aufbauen)	Edelstahl



Seiten-Einstieg Seereling	On both sides and on the stern
Heckkorb	Stainless steel
Bugkorb	Stainless steel
Rettungsinsel	New in 2012 : DSB liferaft with automatic hydrostatic releases
Rettungsinsel (Pers)	Container 12
Letzte Wartung Rettungsinsel	05-2021
Schwimvesten	8 x Life Jacket with flashlight & tether, stowed in cabin lockers, serviced yearly
Sicherheits Rustung	8 x Safety harness (stowed in cabins, mostly incl. live lines)
Rettungsboje	New in 2012 : 2x horseshoe Lifebuoy
Markierboje	New in 2012 : 2 x Jon Buoy, man overboard with flashlight inflatable type
Sicherheitsleine auf Deck	Walk around life line over deck
Horn	Luftdruck
Fernglas	ja
Radar Reflektor	2 x
Fenderkissen	12 x with covers, with EBB TIDE printed on them
Festmacher	Various are present
Reserve Teilen	Included various for engine, generators, pumps, toilets, etc.
Werkzeug	Several in toolbox & in workbench, incl. electric drill
TV	1 x Loewe satellite TV (New in 2012 - in owners cabin) & 1 x built-in Loewe TV (New in 2019 - in the saloon)
TracVision ball	KIV-IHI/Trac-Vision, Satellite trac system (tv receiver&decoder)
Radio-CD Spieler	1 x Sonos (individual) soundsystem & CD (in owners cabin) & Sonos Sound system slave in the cockpit & 1 x Denon radio (in the saloon) & 2 x Onkyo radio (in front bunk bed cabins)
DVD Spieler	Sharp DVD/Blu-Ray 3D player (in the saloon)
Lautsprecher im Pflicht	2 x
Lautsprecher im Salon	4 x
Lautsprecher im Kabin	2 x in each cabin
Uhr - Barometer	Wempe
Feuerloscher	7 x portable foam & 4 x CO2 (yearly serviced)
Letzte Wartung Feuerloscher	2023



Feuerlöscher in Maschine Raum

FM200 automatic fire fighting system in engine room (to active from outside engine room)

Automatische Löschsystem

ja

Weitere Info

Air compressor in lazarette, with several air outlets. 2x Diving air bottle. Several Flash lights. Bosun's chair.

Weitere Info

1 x 220 Volt electric Heavy Duty Fire-fight pump & hose. Sea water system with outlet on aft deck. 2 x Fore safety suit (each includes clothes & a helmet & a 10 minutes air mask). Fire blankets in the galley area. Fire & Smoke alarm detection system with a control panel & a Fifi-Deckma acoustical alarm with smoke detectors/alarms in all accomodations & heat detection system in the engine room. Distress flares - several in container (Renewed in 2021).

Weitere Info

General ships-plan, tank-plan, electricity plan, various construction drawings, manuals for most equipment (mainly in English language) & Ships computer/notebook (with relevant data + maintenance service + parts information) are present.

RIGG

Rig

Ketsch-Kutter Masthead

Stehendes Gut

Rod Stainless steel Navtec Rodrigging approx. 10-12 mm

Marke Mast

Rondal

Material Mast

Aluminium behandelt Masts & Booms. White painted in 2010 & partly repainted in 2025

Salings

Main mast with 3 sets & Mizzen mast with 2 sets. All white painted in 2010 & partly repainted in 2025

Durchgehende Mast

Hydraulic pump/jack to set or release mast/rig tension

Großsegel

North Sails : Norlam (approx. 102m2 - purchased 05/2009 and only used until 08/2009. Due to refit until 2012, in fact commissioned since 2012).

Rollgroß Anlage

Rondal Mainsail & Mizzen in-mast furl system

Besan

North Sails : Norlam (approx. 40m2 - purchased 05/2009 and only used until 08/2009. Due to refit until 2012, in fact commissioned since 2012).



Fock	North Sails : Norlam (approx. 78m2) with UV protection strip (purchased 05/2009 and only used until 08/2009. Due to refit until 2012, in fact commissioned since 2012).
Genua I	North Sails : Norlam (approx. 176m2) with UV protection strip (purchased 05/2009 and only used until 08/2009. Due to refit until 2012, in fact commissioned since 2012). The present owner replaced the original Genua II for a larger Genua I, which does give the yacht a better performance under Mediterranean wind conditions. Original Genua II according to the Huisman design was 126m2. Total sailing area windwards is now 318m2 (with original Genua II it was 268m2). Genua sheets renewed in 2021.
Rollreffanlage	New in 2012 : Hydraulic Reckmann furling system
Kutter Rollreffanlage	New in 2012 : Hydraulic Reckmann furling system
Stageegel	New in 2012 : North Sails
Reff Vorrichtung	Rollgross im Mast Rondal Mainsail & Mizzen with Hydraulic Navtec outhaul/tensioner
Achterstag Spanner	hydraulik Navtec & also Babystay tensioner
Baumniederhohler	hydraulik Main boom Navtec & manual Mizzen boom
Primare Schot Winschen	4 x Stainless steel hydraulic Lewmar 68ST (Mainsail & Staysail)
Sekundaire Schot Winschen	1 x hydraulic Lewmar 55ST (Mizzen)
Genua Schotwischen	2 x Stainless steel (new in 2011) hydraulic Lewmar 111 ST & 2 x grinder (overhauled in 2011) for these winches
Fall Winschen	3 x Stainless steel Lewmar 54ST (Mizzen) & 3 x Lewmar 46ST (main mast) & 6 x Lewmar 65ST (near main mast)
Multifunktional Winschen	4 x Lewmar 46ST (main mast) & 3 x Lewmar 52ST (mizzen mast)
Spi-Baum	Aluminium 2 x White painted in 2010
Jockey-Baum	Aluminium 1 x White painted in 2010
Isolierte Heckstag	Navtec Isolators



Weitere Info

Majority of rigging where required overhauled or renewed 2010-2015. Dynema halyards. Modern stainless steel/Delrin Rondal Ocean Racing blocks with ball bearing. Custom made stainless steel & aluminium Rondal fittings & hardware & rope jammers & custom made Rondal Ocean Racing deck gear. All winches overhauled in 2023. Additional winches : 2 x hydraulic Lewmar 68ST (main mast backstays) & 2 x Lewmar 52ST (mainsail traveller) & 1 x hydraulic Lewmar 68ST (mainsail outhaul) & 1 x hydraulic Lewmar 58ST (mizzen outhaul) & 4 x winch handle. Mainsail sheet button with prevention lid. Most hydraulic winches labelled with integrated backlight. For Safety reason the main switch board has an overall stop switch for the hydraulic systems. All 4 furling sail systems have a manual back up.

Weitere Info

Hydraulic power installed in the engine room for sail winches & sail furlers. The hydraulic pumps are electric driven from the service battery group. Furling sails and winches have their individual hydraulic pumps.



ROYAL HUISMAN 2600



ROYAL HUISMAN 2600



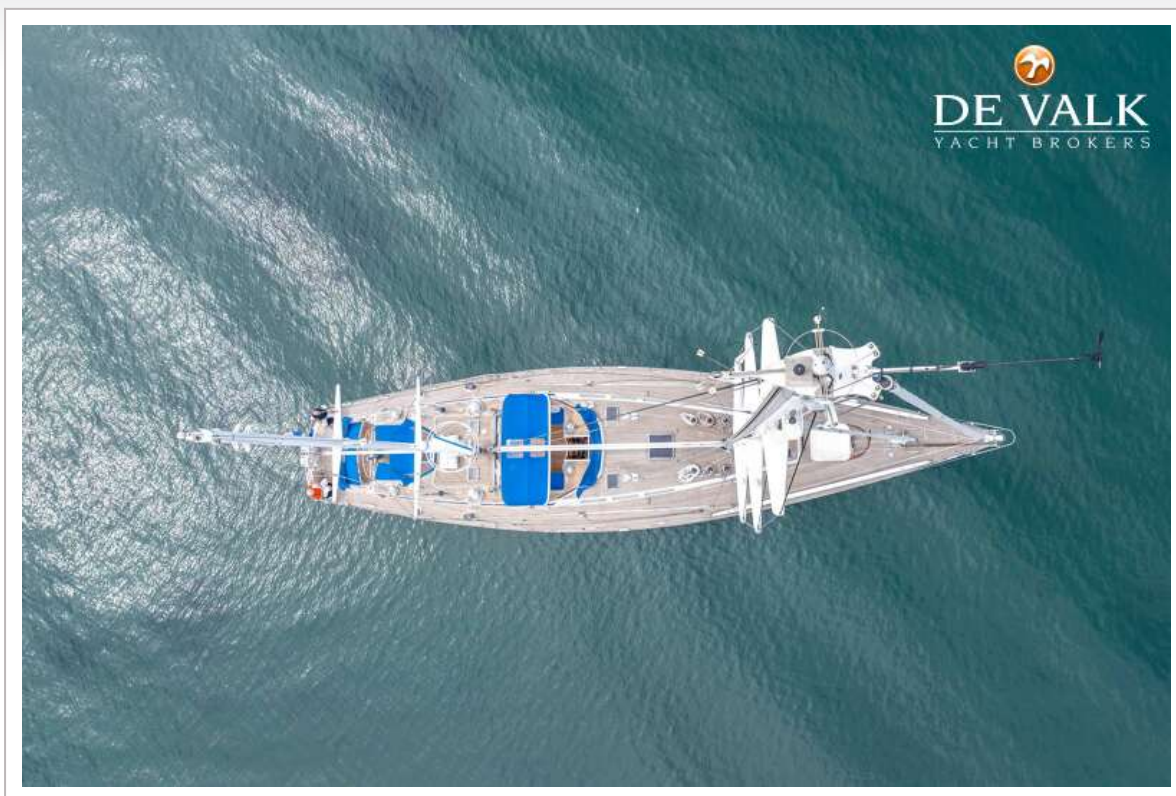
ROYAL HUISMAN 2600



ROYAL HUISMAN 2600



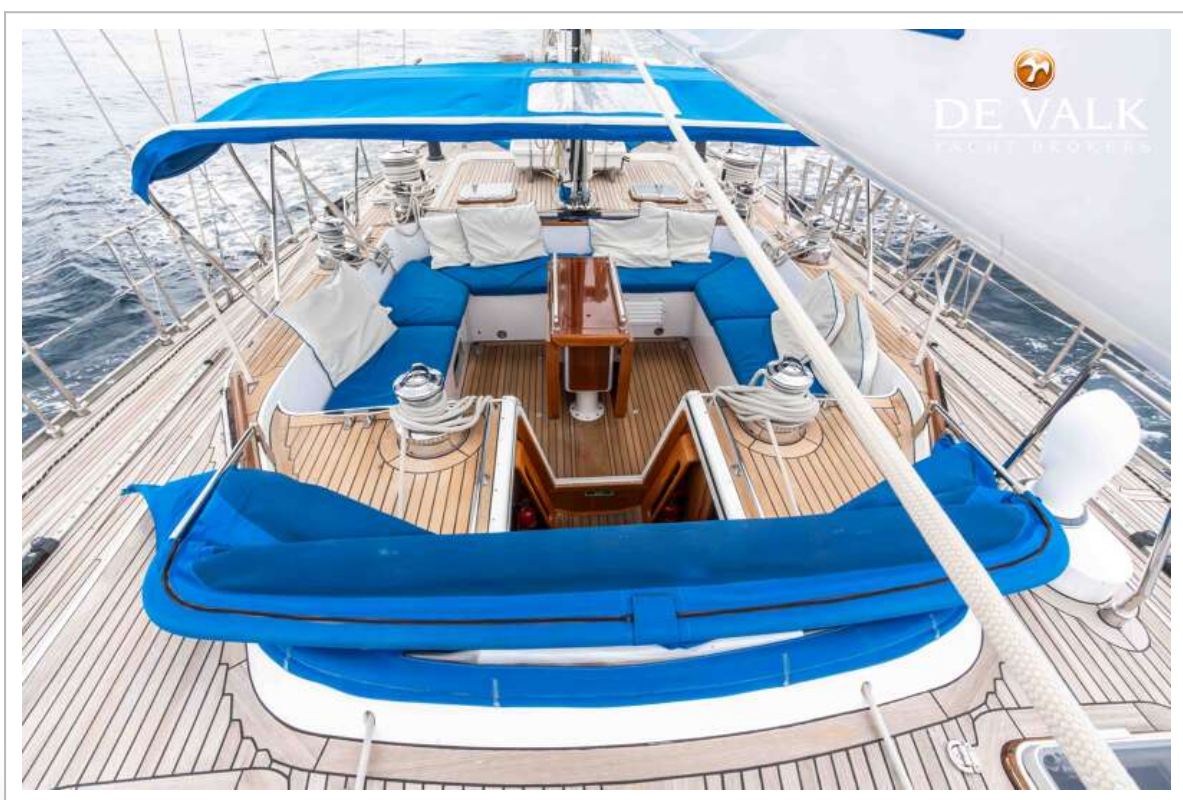
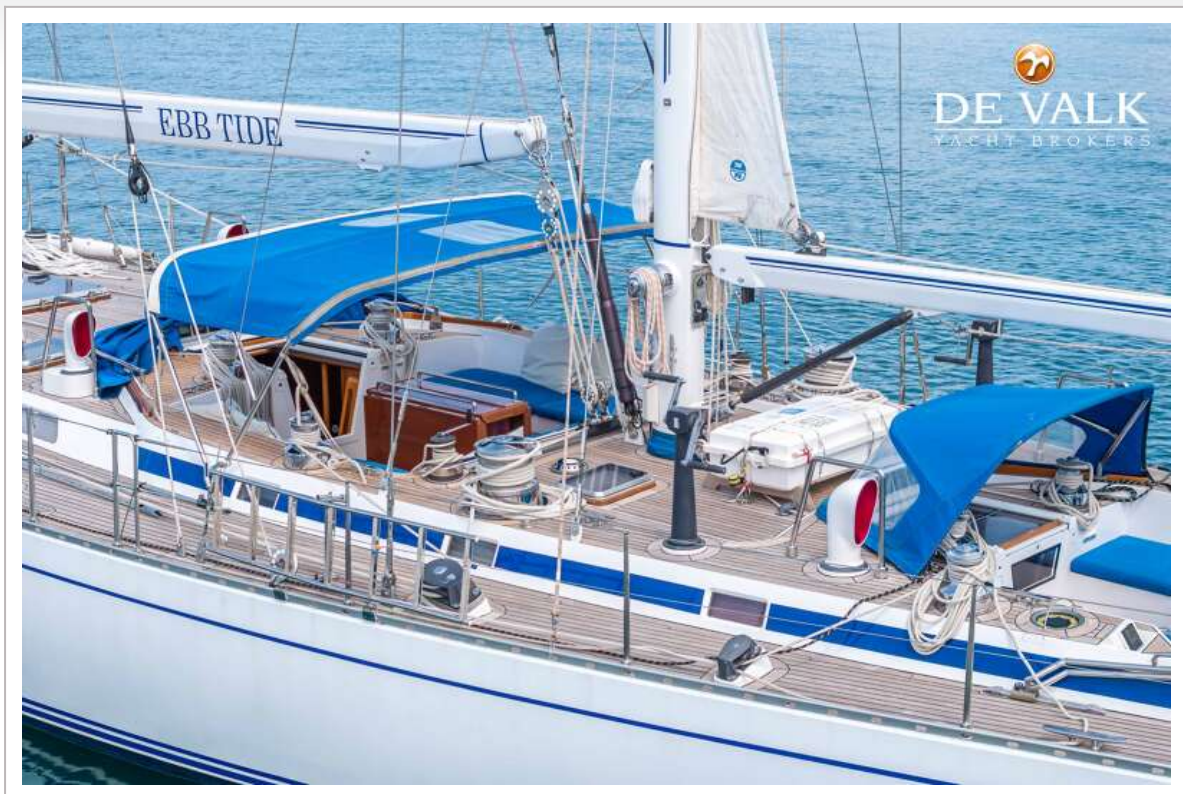
ROYAL HUISMAN 2600



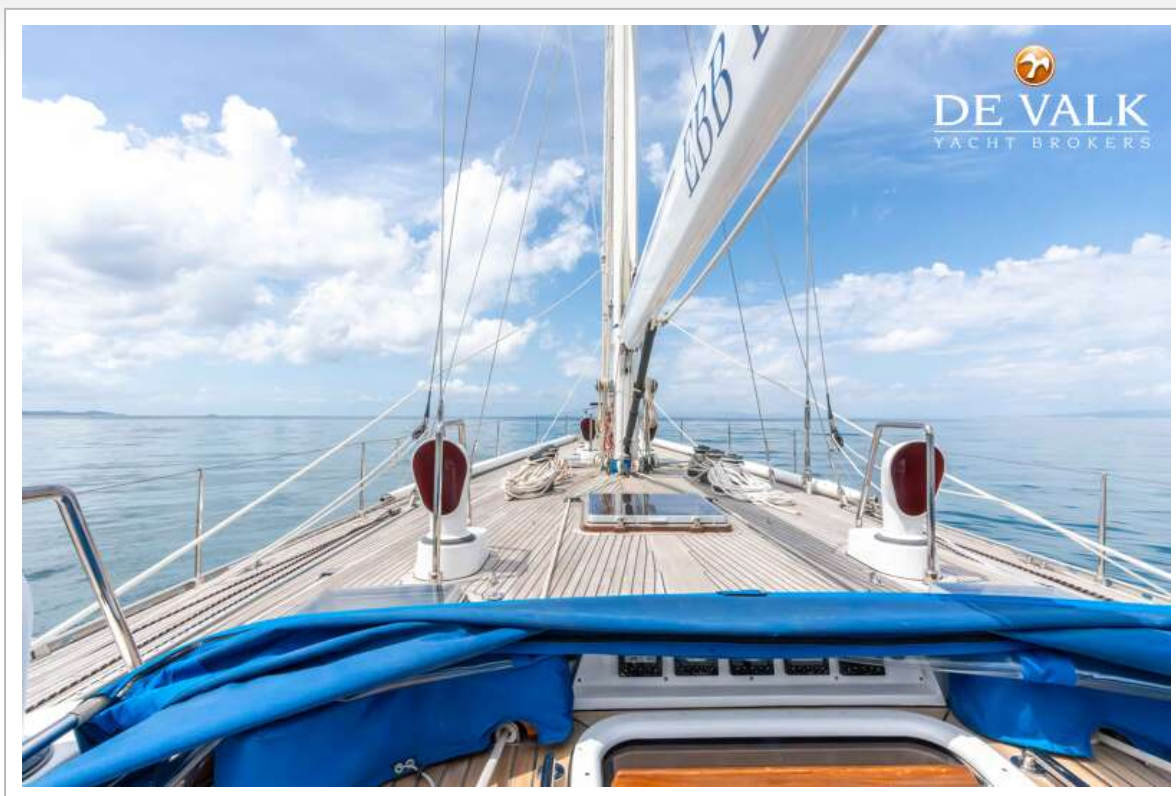
ROYAL HUISMAN 2600



ROYAL HUISMAN 2600



ROYAL HUISMAN 2600



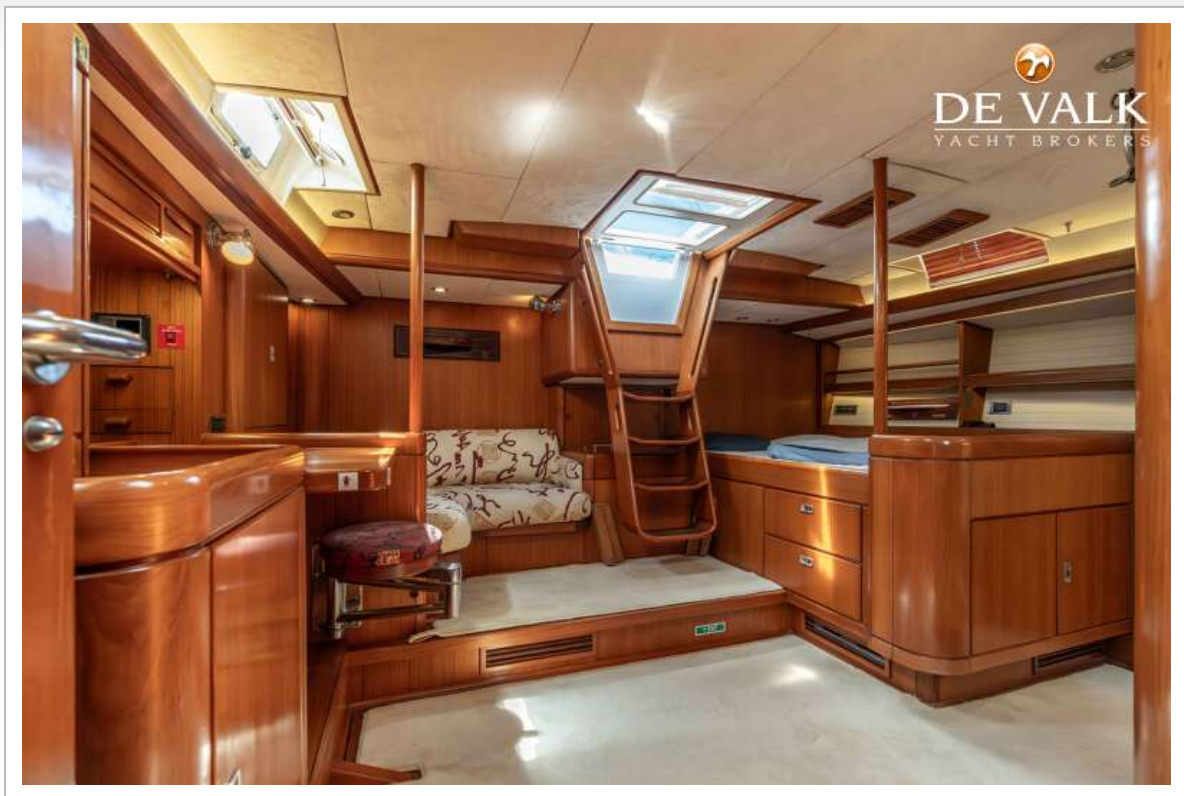
ROYAL HUISMAN 2600



ROYAL HUISMAN 2600



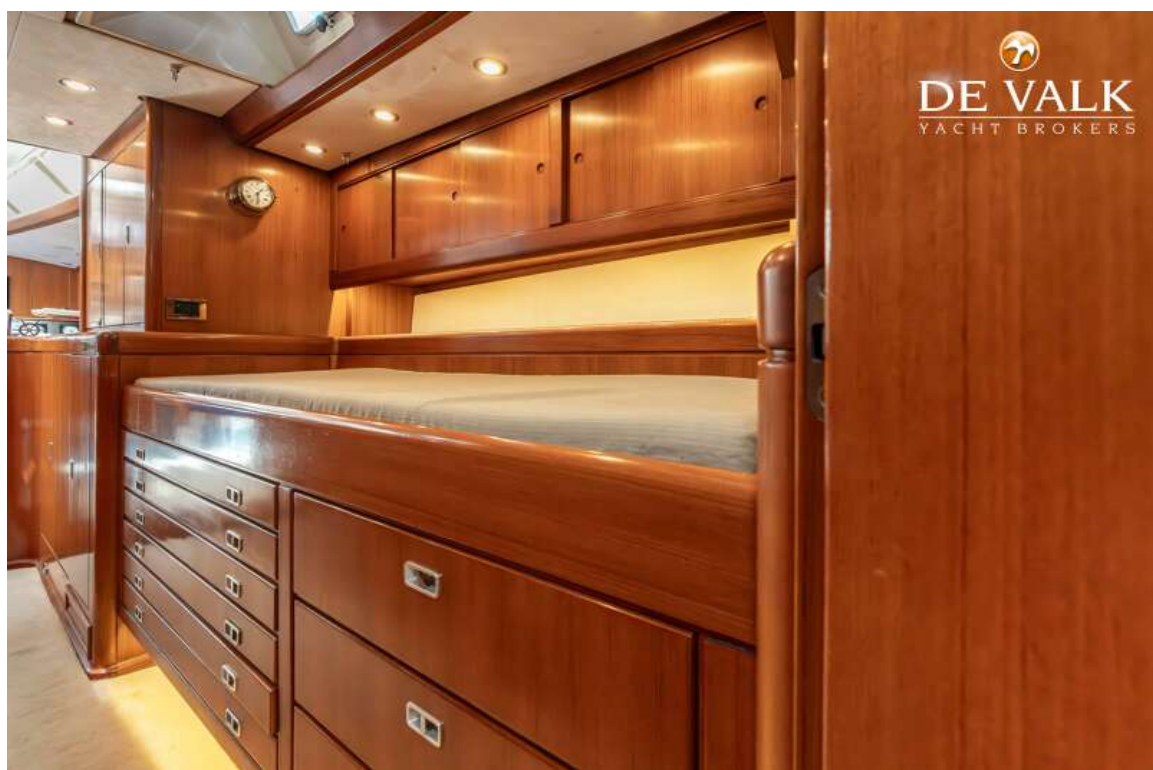
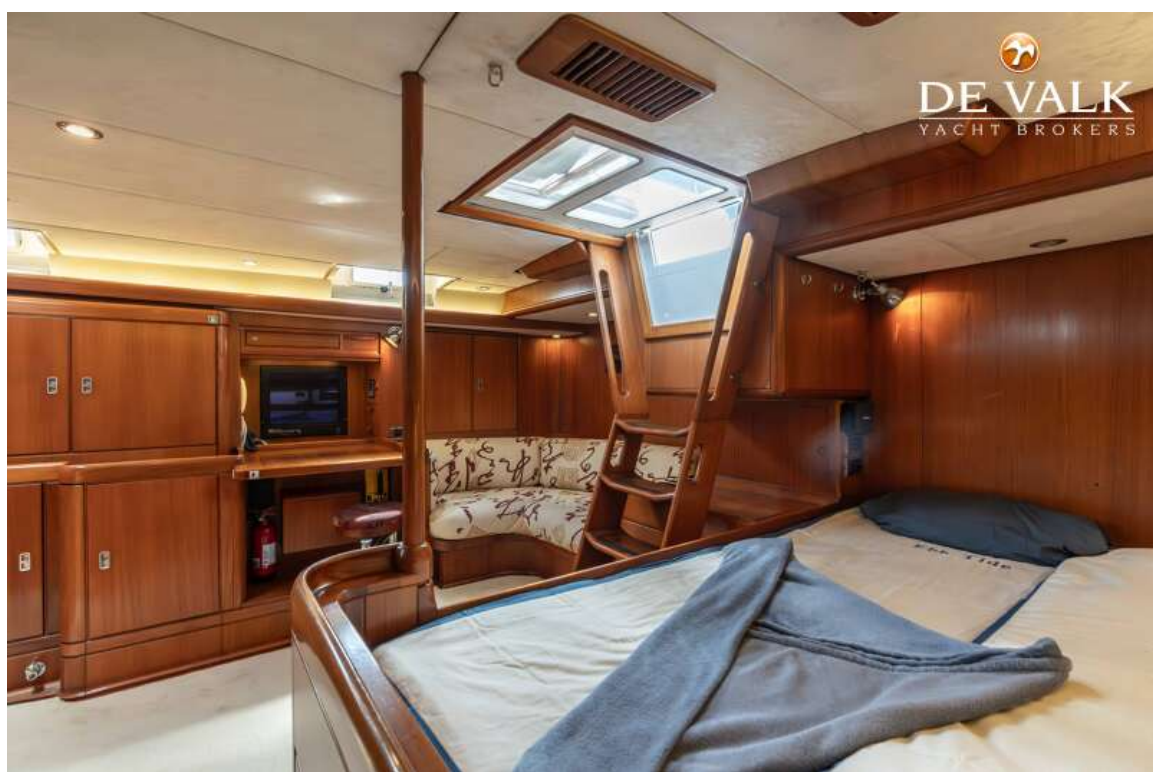
ROYAL HUISMAN 2600



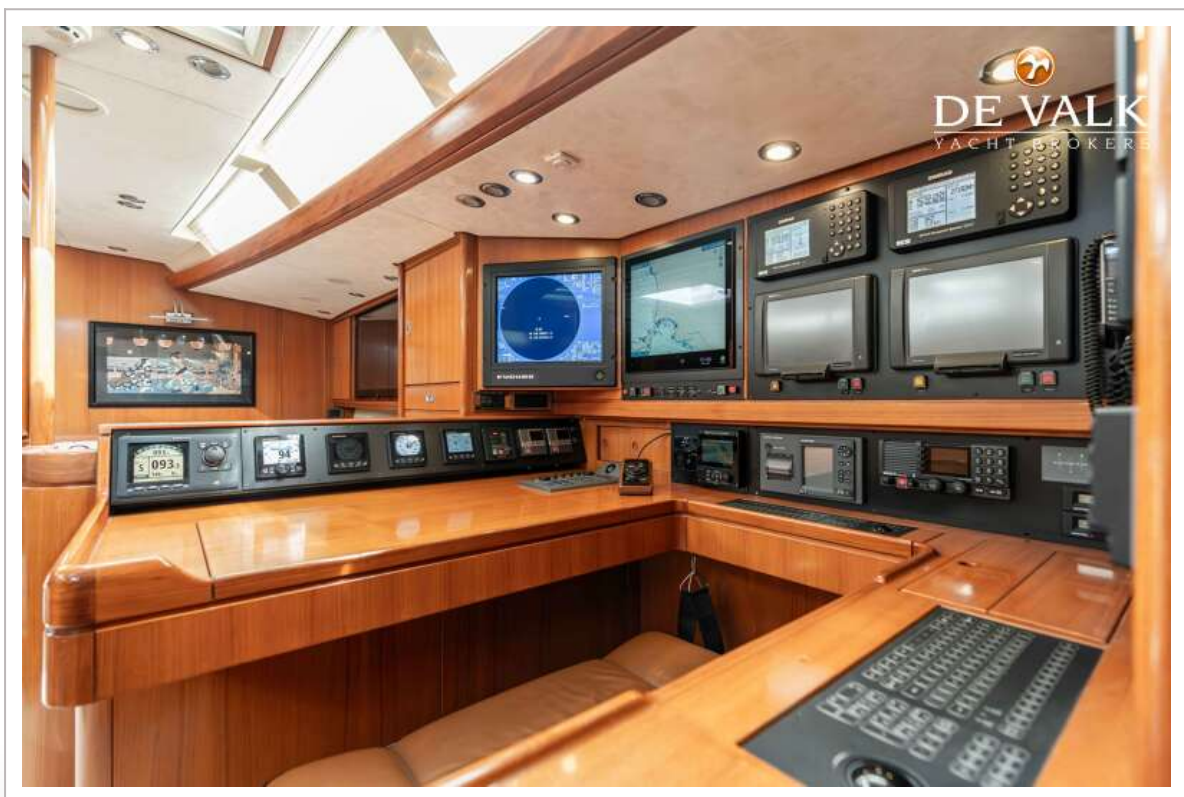
ROYAL HUISMAN 2600



ROYAL HUISMAN 2600



ROYAL HUISMAN 2600



ROYAL HUISMAN 2600



ROYAL HUISMAN 2600



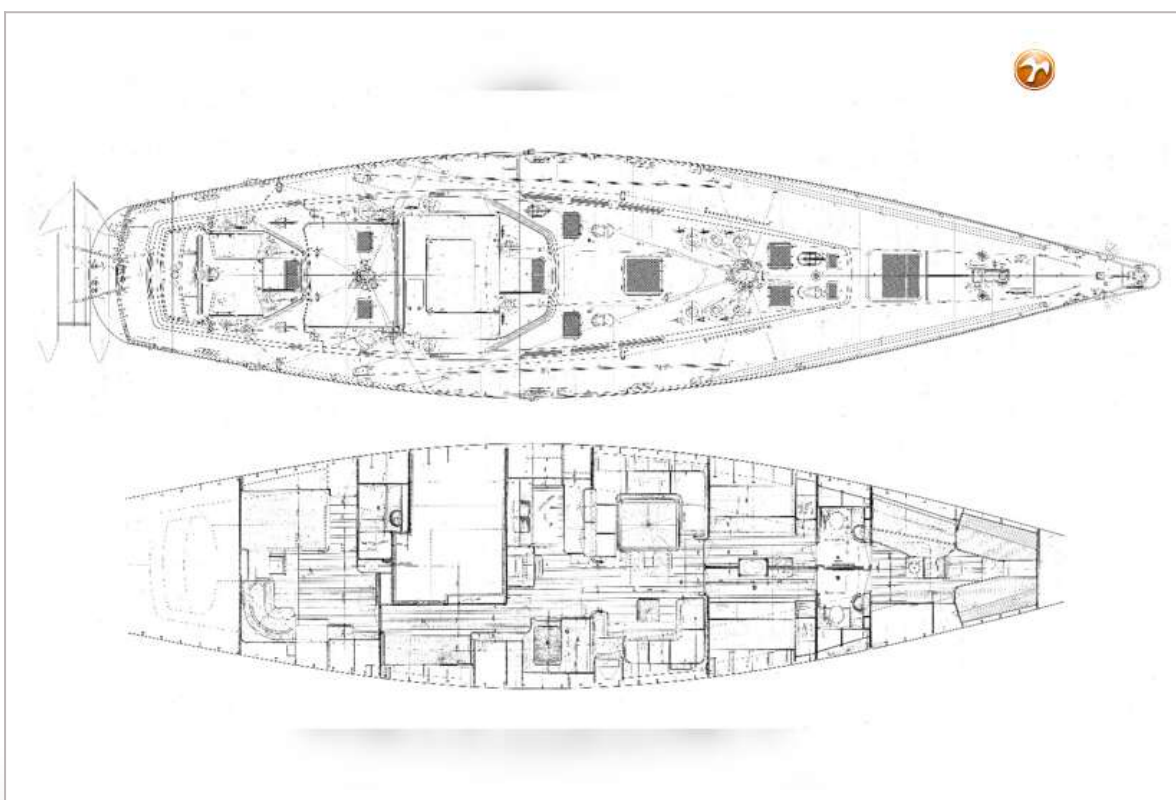
ROYAL HUISMAN 2600



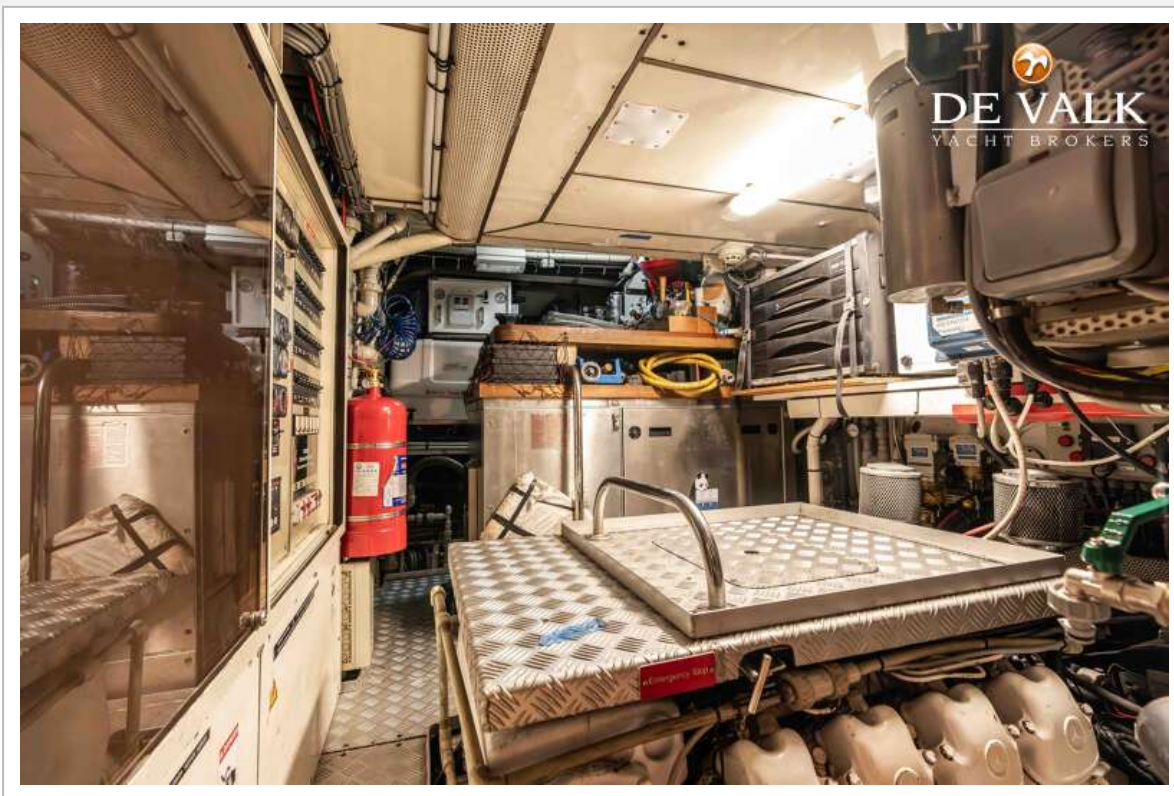
ROYAL HUISMAN 2600



ROYAL HUISMAN 2600



ROYAL HUISMAN 2600



ROYAL HUISMAN 2600

