



DE VALK
YACHT BROKERS



ROYAL HUISMAN SLOOP



DE VALK
YACHT BROKERS

KOMMENTARE DES MAKLERS

The project, "Belle Fontaine", formerly known as "Black Shark of St. Peter" can be considered as a sistership of the legendary "Flyer II". Her current owner started with an extensive refit partially carried out at the Royal Huisman refit facilities in Zaandam. Large parts of the interior have been removed as also a part of the insulation. After a fresh coat of paint in 2023 the owner ran out of time due to obligations to other projects. Therefore, she is now for sale. Mast and rigging are available.

Hans Visser

TECHNISCHE DATEN

Maße	24.68 x 6.11 x 3.96 (m)	Werft	Royal Huisman
Baujahr	1982	Kabinen	3
Material	Aluminium	Kojen	6
Motor(en)	x	PS/kW	0.00 (PS), 0.00 (kW)
Verkaufspreis	verkauft (MwSt.)	Liegeplatz	contact sales office

KONTAKT

Verkaufsbüro	De Valk Hindeloopen B.V.	Telefon	+31 514 52 40 00
Adresse	Oosterstrand 1 8713 JS Hindeloopen NL	E-Mail	hindeloopen@devalk.nl

HAFTUNGS AUSSCHLUSS

Diese Angaben erfolgen nach bestem Wissen, können jedoch nicht garantiert werden.



ALLGEMEIN

Modell	ROYAL HUISMAN SLOOP
Typ	Segelyacht
Rumpflänge (m)	24,68
Wasserlinienlänge (m)	19,80
Breite (m)	6,11
Tiefgang (m)	3,96
Durchfahrtshöhe (m)	31,00
Baujahr	1982
Werft	Royal Huisman
Land	Niederlande
Entwerfer	German Frers
Gewicht (t)	55
Brutto tonnage	63
CE Norm	NA
Rumpfmateriäl	Aluminium
Rumpffarbe	White
Rumpfform	Rundspant
Art Kiel	Flossen Kiel
Material Aufbauten	Aluminium
Deckmaterial	Aluminium
Deck Finish	Antirutsch Farbe
Pflicht Bedeckung	Teak
Antifouling (Jahr)	2023
Decksluke	Lewmar and Ronstan
Treibstofftank (Liter)	2500
Trinkwassertank (Liter)	2500
Fäkaelien Tank (Liter)	Unknown
Grauwassertank (Liter)	Unknown
Radsteuerung	ja
Weitere Info Farbe und Anstrich	Complete paintjob 2023



Weitere Info

Unfinished project with high potential

UNTERKUNFT

Kabinen	3
Kojen	6
Mannschaftskabine	1
Mannschaftskojen	3
Innen	Pieter Beeldsnijder Design; partially removed
Fussboden	Holz
Navigation Zenter	Without instruments
Kartentisch	ja
Kombüse	Partially removed
Eignerkabine	1 Owners cabin with 2 single beds
Gästekabine 1	2 Guest cabins with bunk beds
Mannschaftskabine(n)	Removed

MASCHINEN

Höchstgeschwindigkeit (Kn)	11
Marschgeschwindigkeit (Kn)	9
Reichweite (nm)	900
Antrieb	V-drive
Bugschraube	Hydraulic, not connected
Hand Bilgenpumpe	In engine room
Elektrische Bilgenpumpe	Not connected
Elektrische Anlage	12/24 and 230 Volt. Not connected

NAVIGATION

Kompass	2 standard compasses near the cockpit
---------	---------------------------------------

AUSRÜSTUNG



Gangspill

Lewmar electric, not connected

RIGG

Rig

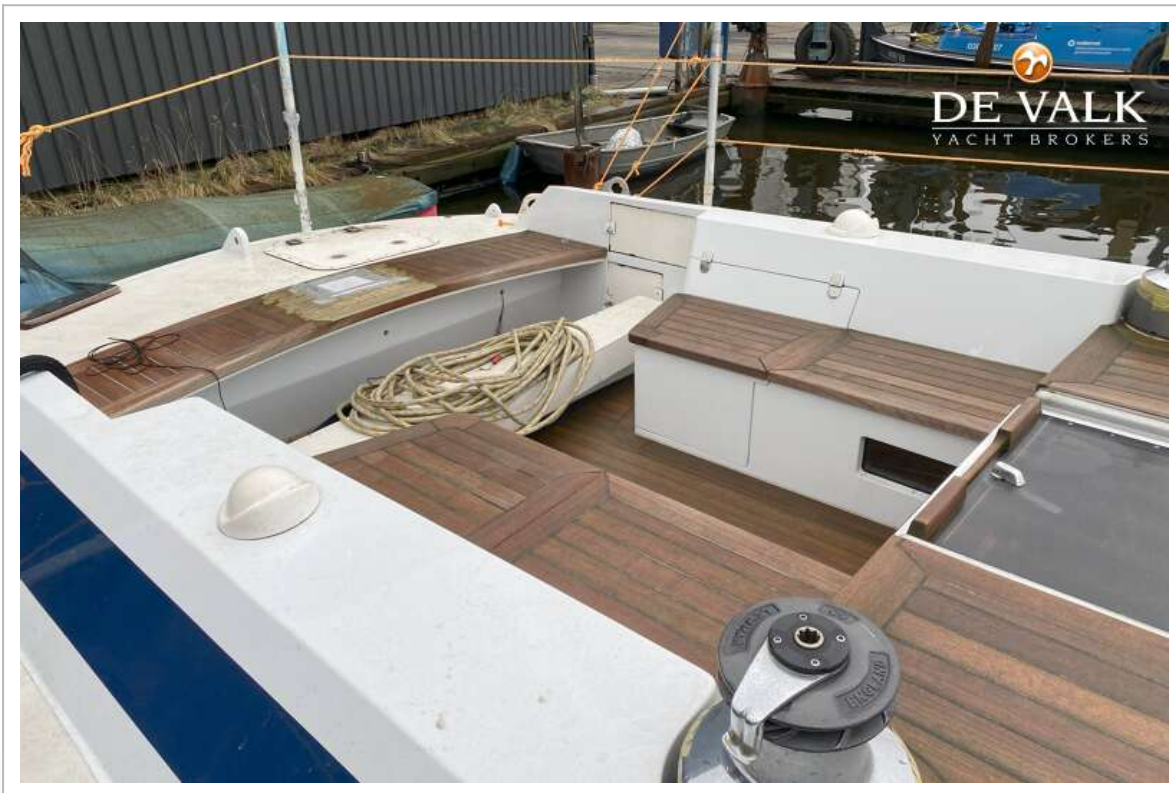
Sloop

Multifunktional Winschen

All Lewmar. 6 electric winches, the rest manual



ROYAL HUISMAN SLOOP



ROYAL HUISMAN SLOOP



ROYAL HUISMAN SLOOP



ROYAL HUISMAN SLOOP



ROYAL HUISMAN SLOOP



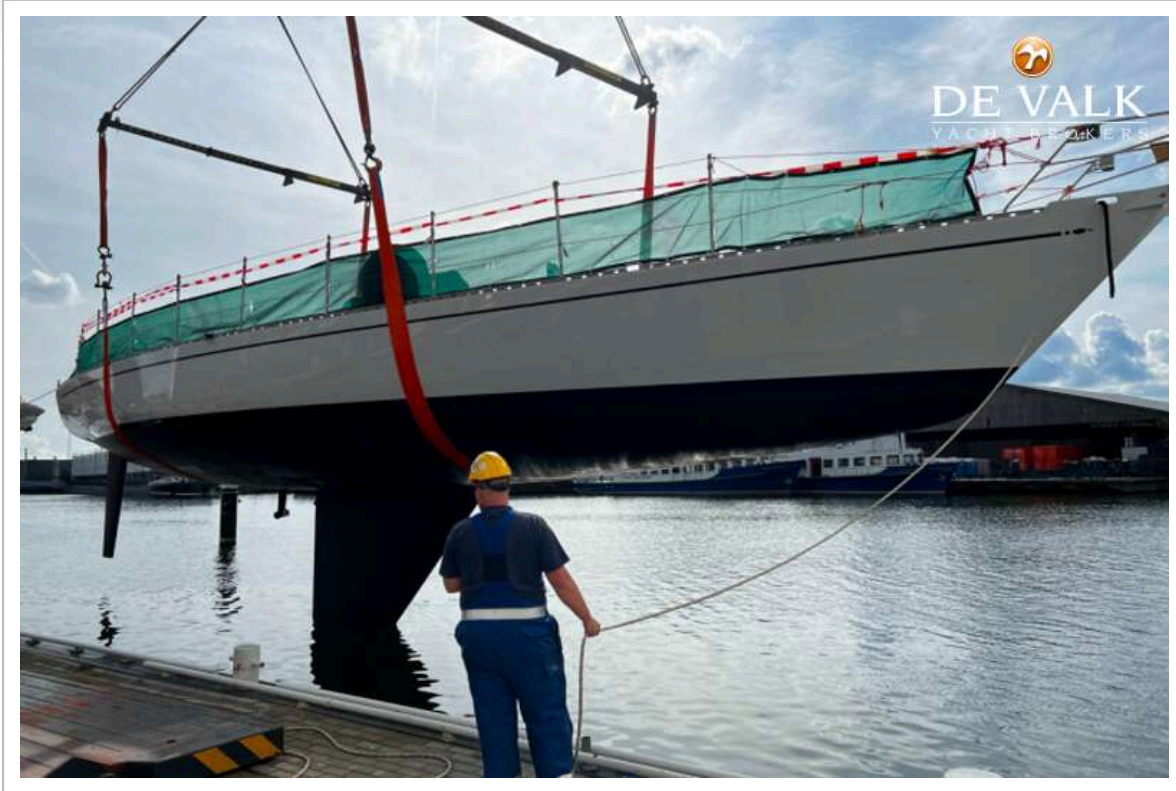
ROYAL HUISMAN SLOOP



ROYAL HUISMAN SLOOP



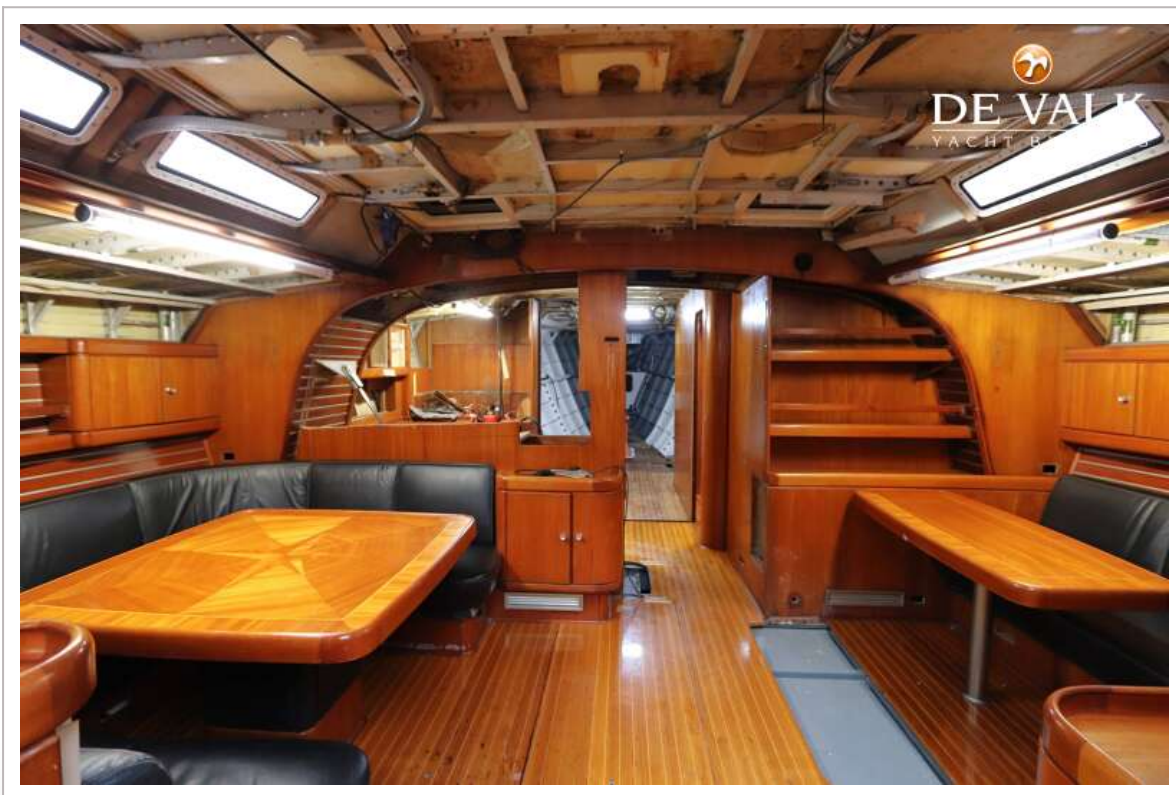
ROYAL HUISMAN SLOOP



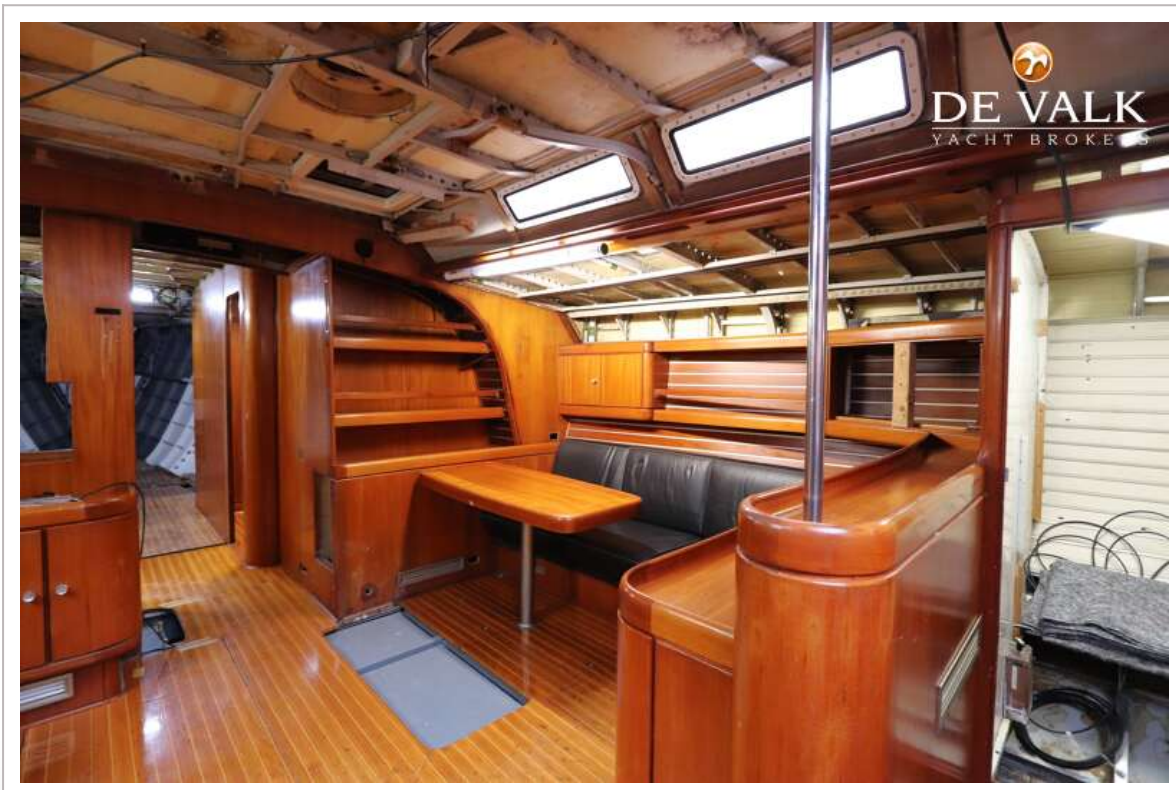
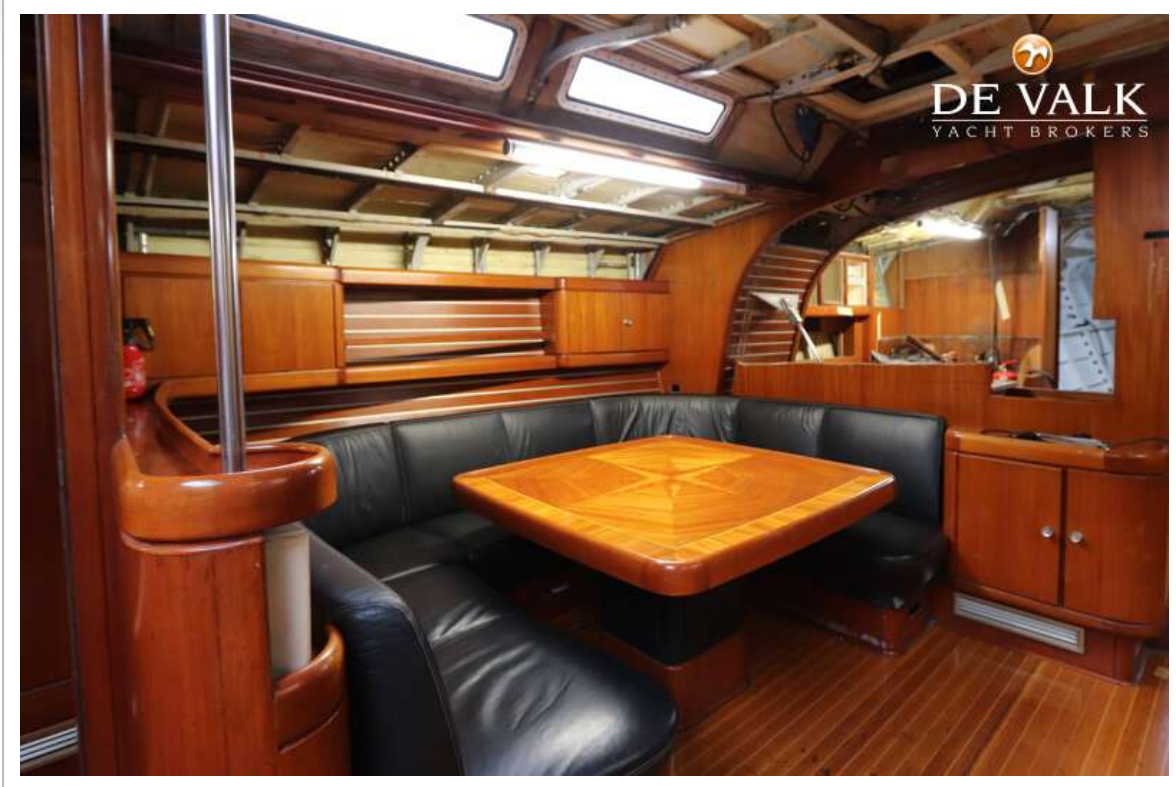
ROYAL HUISMAN SLOOP



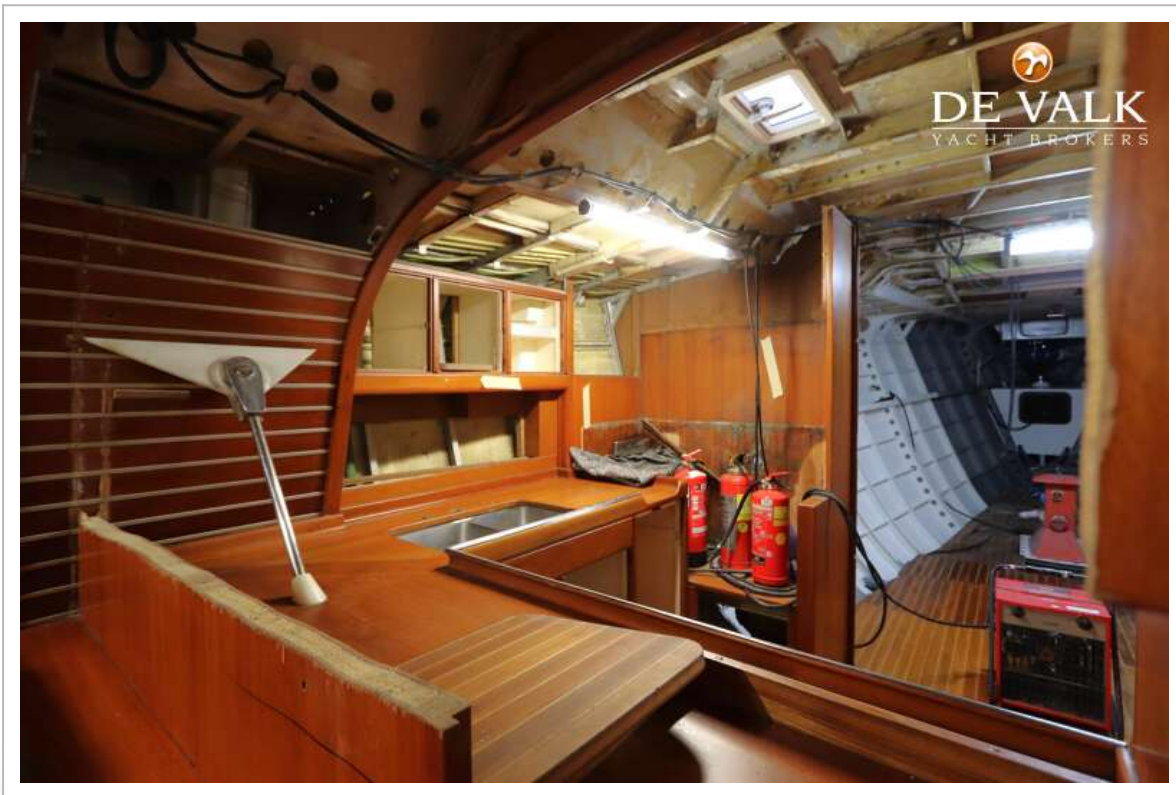
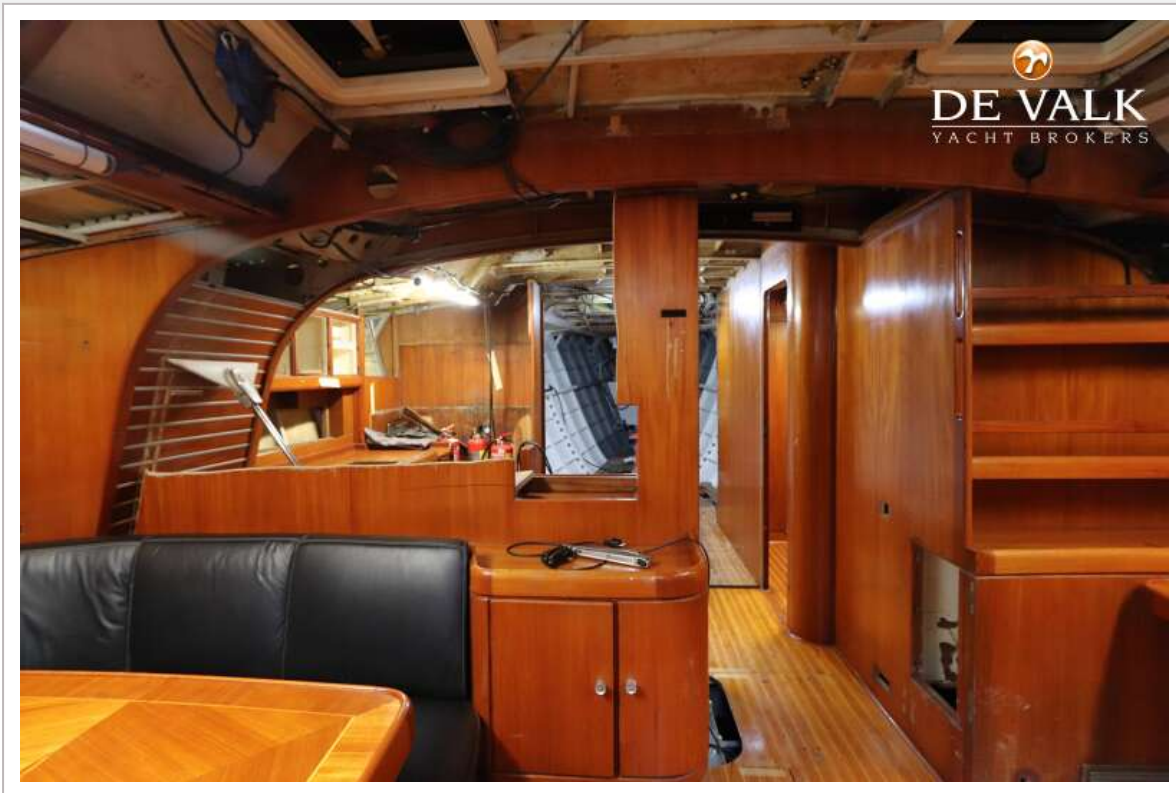
ROYAL HUISMAN SLOOP



ROYAL HUISMAN SLOOP



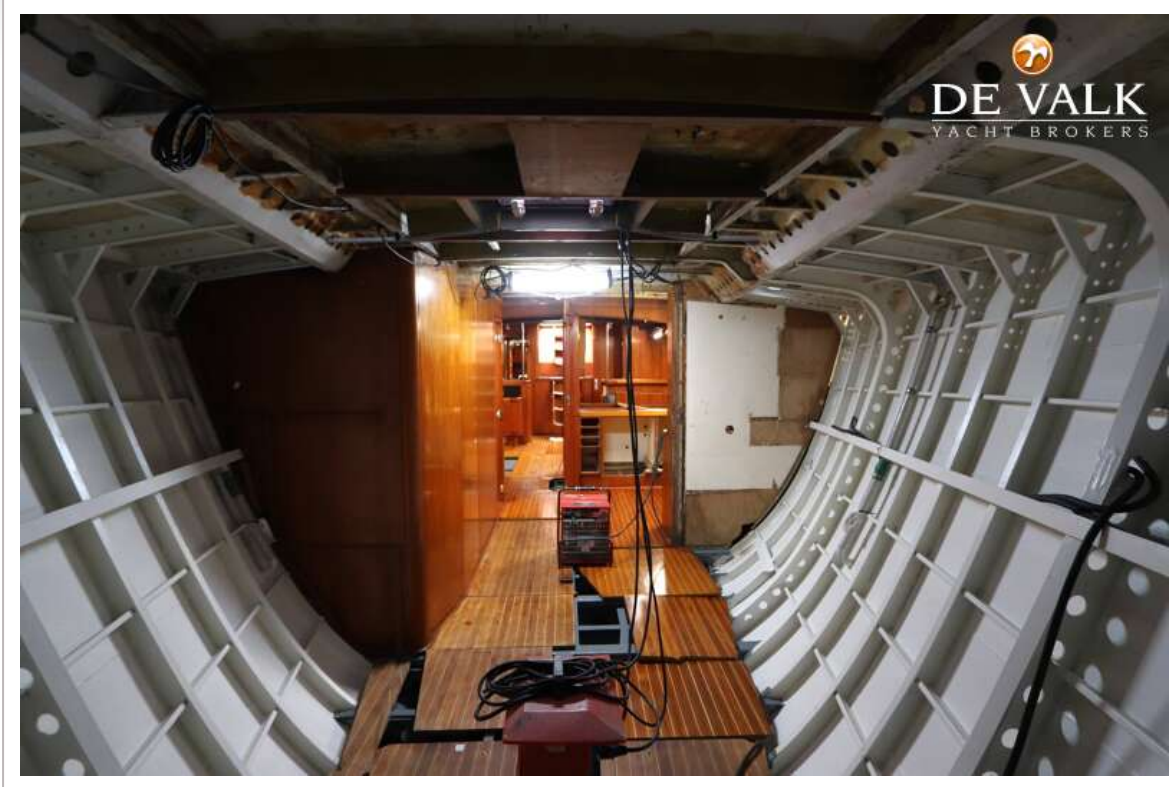
ROYAL HUISMAN SLOOP



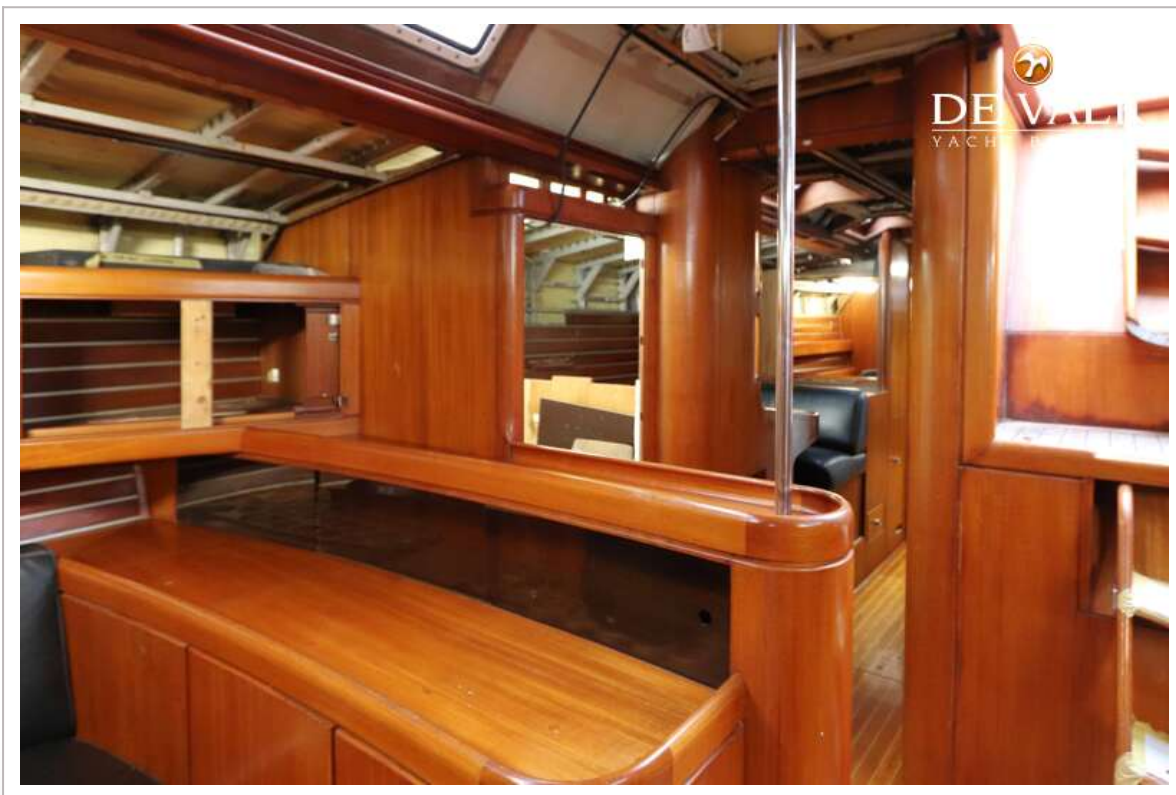
ROYAL HUISMAN SLOOP



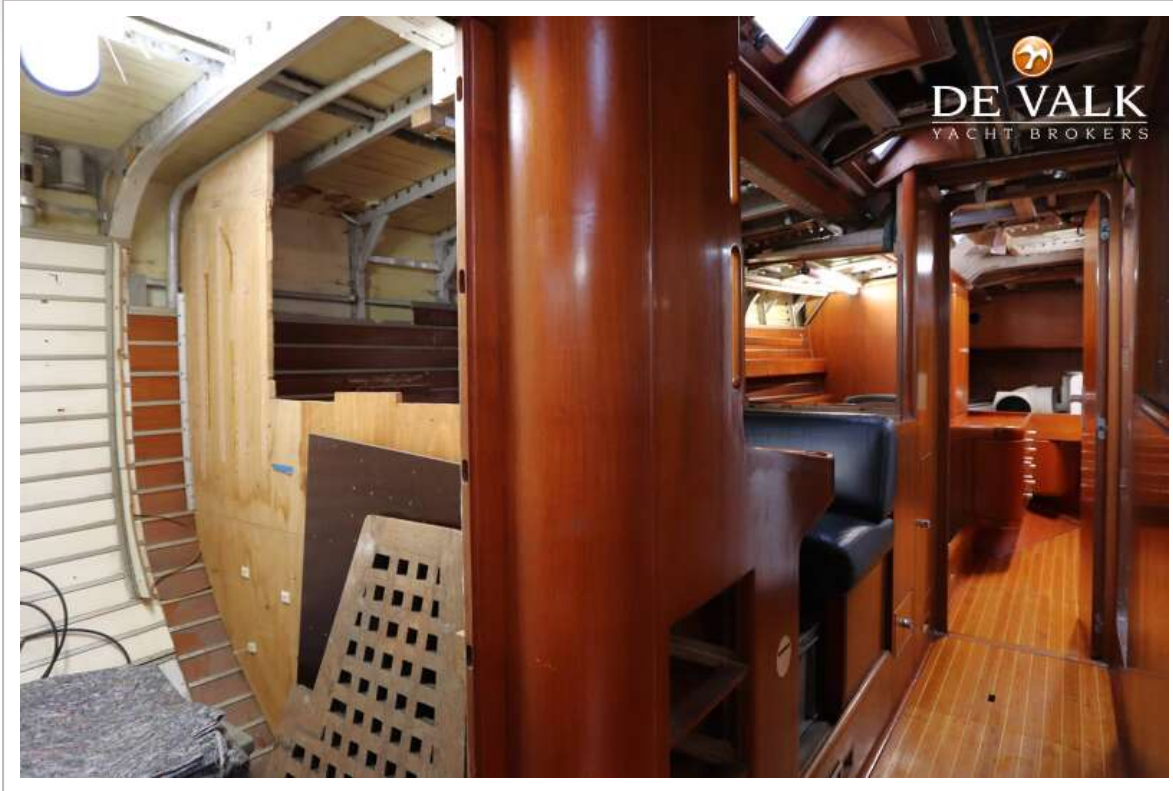
ROYAL HUISMAN SLOOP



ROYAL HUISMAN SLOOP



ROYAL HUISMAN SLOOP



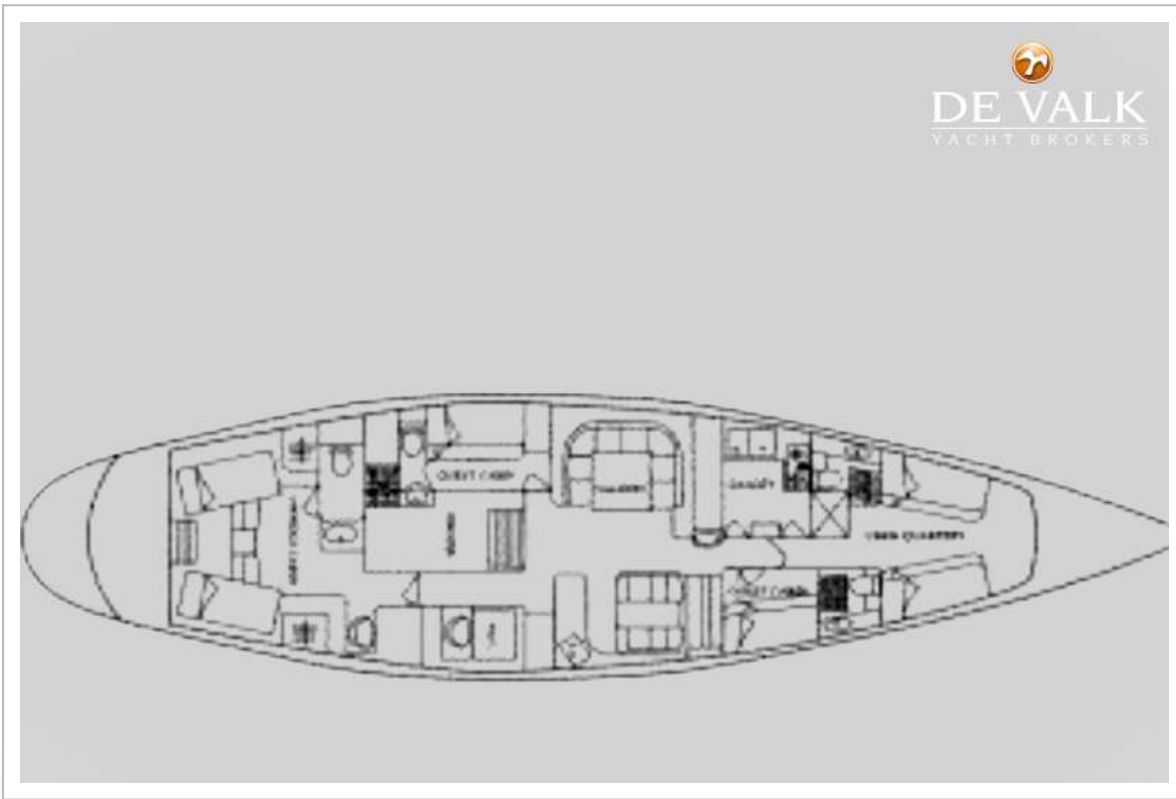
ROYAL HUISMAN SLOOP



ROYAL HUISMAN SLOOP



ROYAL HUISMAN SLOOP



ROYAL HUISMAN SLOOP

