



DE VALK
YACHT BROKERS



STEAM TUG 31M



DE VALK
YACHT BROKERS

STEAM TUG 31M

KOMMENTARE DES MAKLERS

This Steam-Tug 31M is built by J.P.Rennolson and Son, South Shields in Newcastle, England in 1895. It's propulsion is entrusted to a triple expansion steam engine. Its state of conservation makes this Steam-Tug vessel very unique. The current owner of "Pietro Micca" bought her in 1995 and did a major refit with 40.000 hours spent to make sure she can be sailed for many more years. This Steam-Tug can be visited on appointment in Rome, Italy.

Joris van de Rijt

TECHNISCHE DATEN

Maße	31.10 x 6.40 x 3.60 (m)	Werft	Rennoldson & Sons Newcastle
Baujahr	1895	Kabinen	4
Material	Stahl	Kojen	18
Motor(en)	1 x Rennoldson & Son Triple EXPAN steam	PS/kW	500.00 (PS), 368.00 (kW)
Angebotspreis	€ 250.000 (MwSt. Mehrwertsteuerfrei)	Liegeplatz	Italien

KONTAKT

Verkaufsbüro	De Valk Sint Annaland B.V.	Telefon	+31 166 601 000
Adresse	Koelhuisweg 4 4697 RM Sint Annaland NL	E-Mail	sintannaland@devalk.nl

HAFTUNGSAUSSCHLUSS

Diese Angaben erfolgen nach bestem Wissen, können jedoch nicht garantiert werden.



STEAM TUG 31M

ALLGEMEIN

Modell	STEAM TUG 31M
Typ	Motoryacht
Rumpflänge (m)	31,10
Breite (m)	6,40
Tiefgang (m)	3,60
Baujahr	1895
Werft	Rennoldson & Sons Newcastle
Land	Vereinigtes Königreich
Entwerfer	Rennoldson & Sons
Gewicht (t)	335
Rumpfmateral	Stahl
Rumpffarbe	Schwarz
Rumpfform	Rundspant
Art Kiel	Langkieler
Material Aufbauten	Stahl
Stossliste	Stahl
Deckmaterial	Stahl
Deck Finish	Antirutsch Farbe
Deck Finish Aufbauten	Antirutsch Farbe
Pflicht Bedeckung	Antirutsch Farbe
Fenster Einfassung	Kupfer
Fenster Material	Standard Glas
Decks Luke	ja
Isolation	ja
Flybridge	ja
Treibstofftank (Liter)	2 x 20.000 water for boilers
Treibstofftank 2 (Liter)	1 x 40.000 BTZ heavy oil
Innerhalb Steuerung	Steam-powered
Radsteuerung auf Flybridge	Steam-powered
Weitere Info	Wooden wheelhouse completely new installed



UNTERKUNFT

Kabinen	4
Kojen	18
Innen	Classic
Achterdeck	ja
Ruderhaus	ja
Salon	ja
Dinette	ja
Kombüse	ja
Arbeitsfläche	ja
Spülbecken	ja
Herd	ja
Ofen	ja
Warmwasser System	ja
Wasserdruck System	elektrisch
Toilet	ja
Dusche	ja

MASCHINEN

Motoranzahl	1
Marke	Rennoldson & Son
Typ	Triple EXPAN
PS	500
kW	368
Kraftstoffart	Dampf
Installiert im Jahr	1895
Höchstgeschwindigkeit (Kn)	10
Reichweite (nm)	2400
Antrieb	Schraubenwelle
Gewende getriebe	Steam-powered
Motorsteuerung	handbetrieben



STEAM TUG 31M

Propeller Typ	fest
Propellerblätter	4
Material Propellerwelle	Stahl
Elektrische Bilgenpumpe	5 x
Generator	Sunderland Forge & Engineering Steam powered 110V
Generator 2	Aifo Veco diesel powered 220V
Batterien	8 x
Batterie Ladegerät	2 x
Solar panele	6 x
Landstrom	mit Kabel
Weitere Info	Steam-powered deck winch
Weitere Info	Steam-powered alternator for charging the batteries

NAVIGATION

Kompass	2 x
Tiefenanziege	ja
Logge	ja
UKW	ja
Radar	ja
GPS	ja
Navigation Beleuchtung	ja
Suchscheinwerfer	On flybridge

AUSRÜSTUNG

Sonnenschirm	On front deck + aft deck
Anker	2 x Hall
Ankerkette	ja
Ankerwinde	Steam-powered
Beiboot	fest Rumpf 2 x
See Reling	Stahl
Rettungsinsel	Container 2 x



Rettungsboje	ja
Fenderkissen	ja
Festmacher	ja
Weitere Info	Steam-powered winch for mooring lines

RIGG

Rig	Schoner
Stehendes Gut	Drahtseil
Material Mast	2 x steel
Großstagesegel	On furler
Besan	On furler
Fock	ja
Multifunktional Winschen	Steam-powered winches for sails



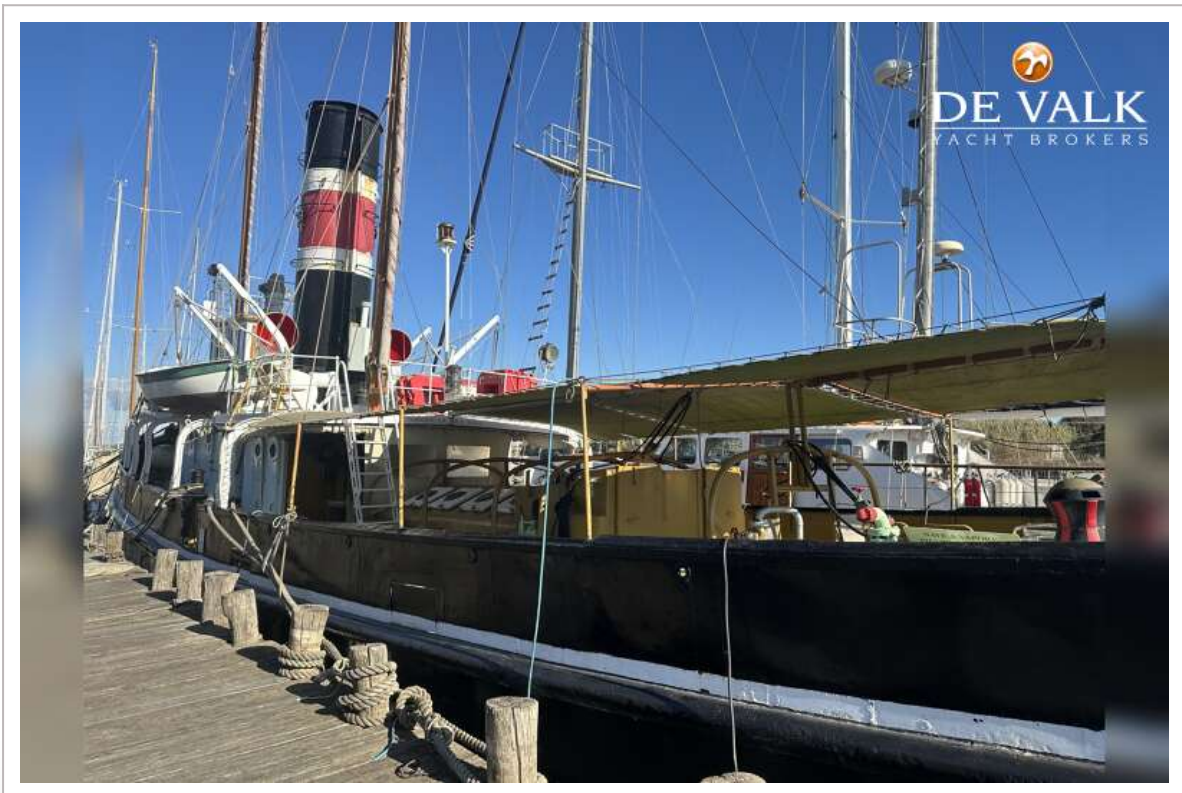
STEAM TUG 31M



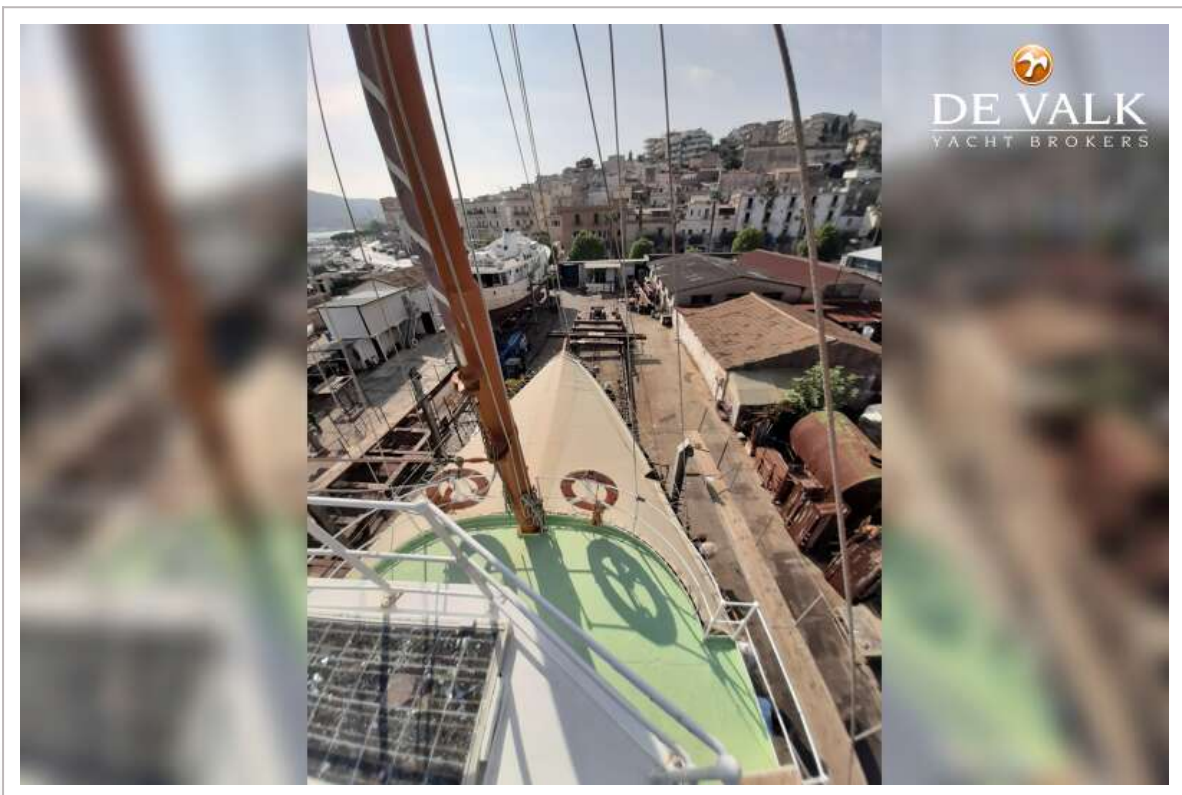
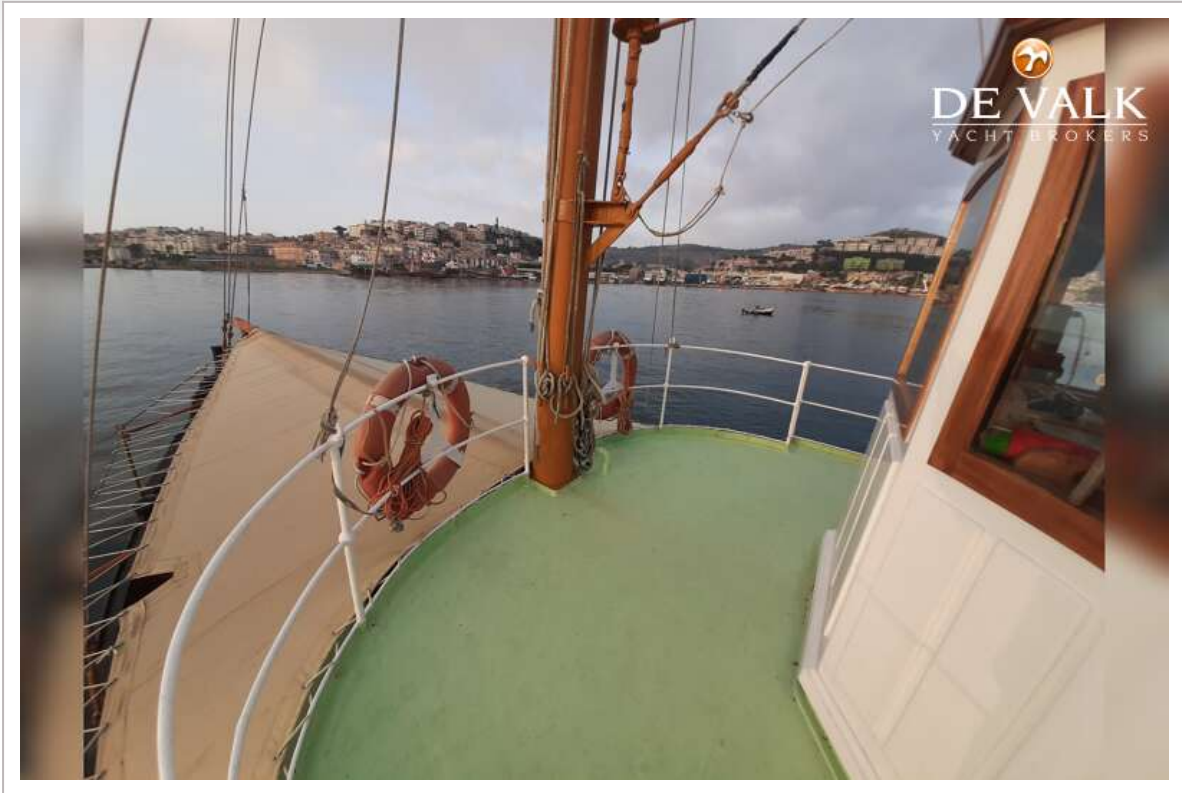
STEAM TUG 31M



STEAM TUG 31M



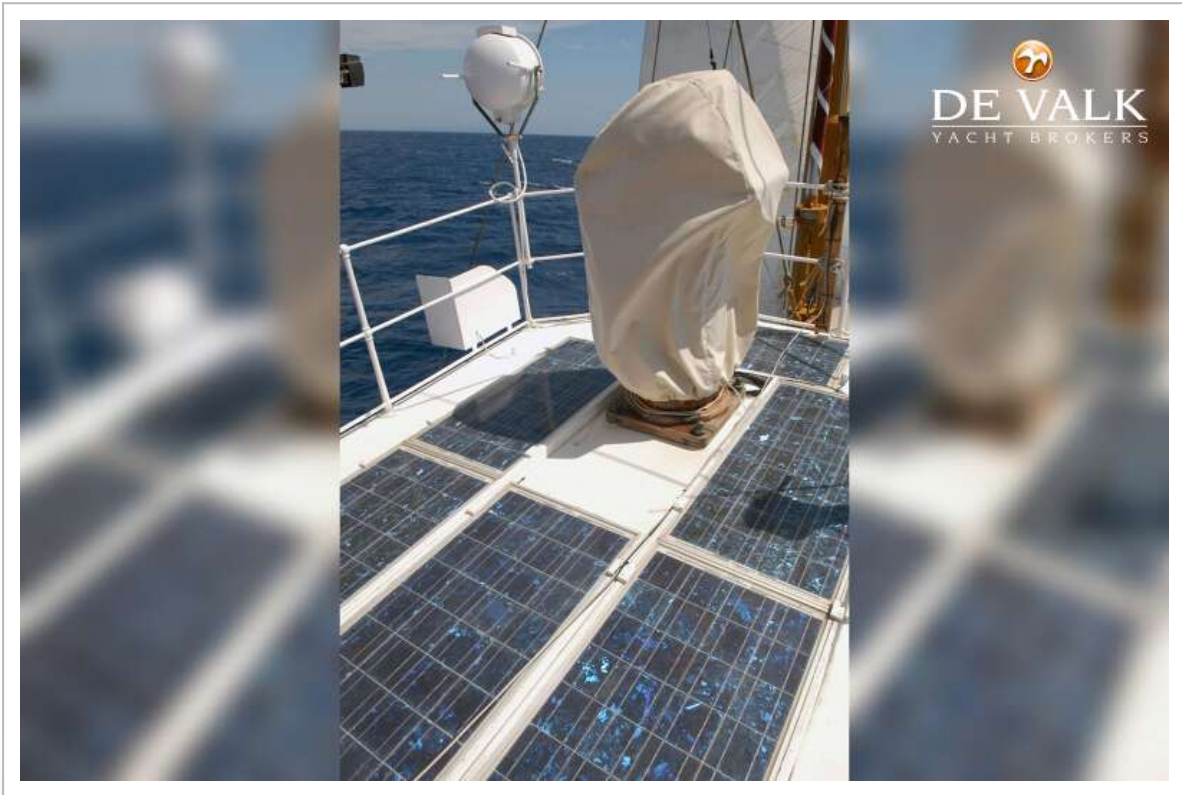
STEAM TUG 31M



STEAM TUG 31M



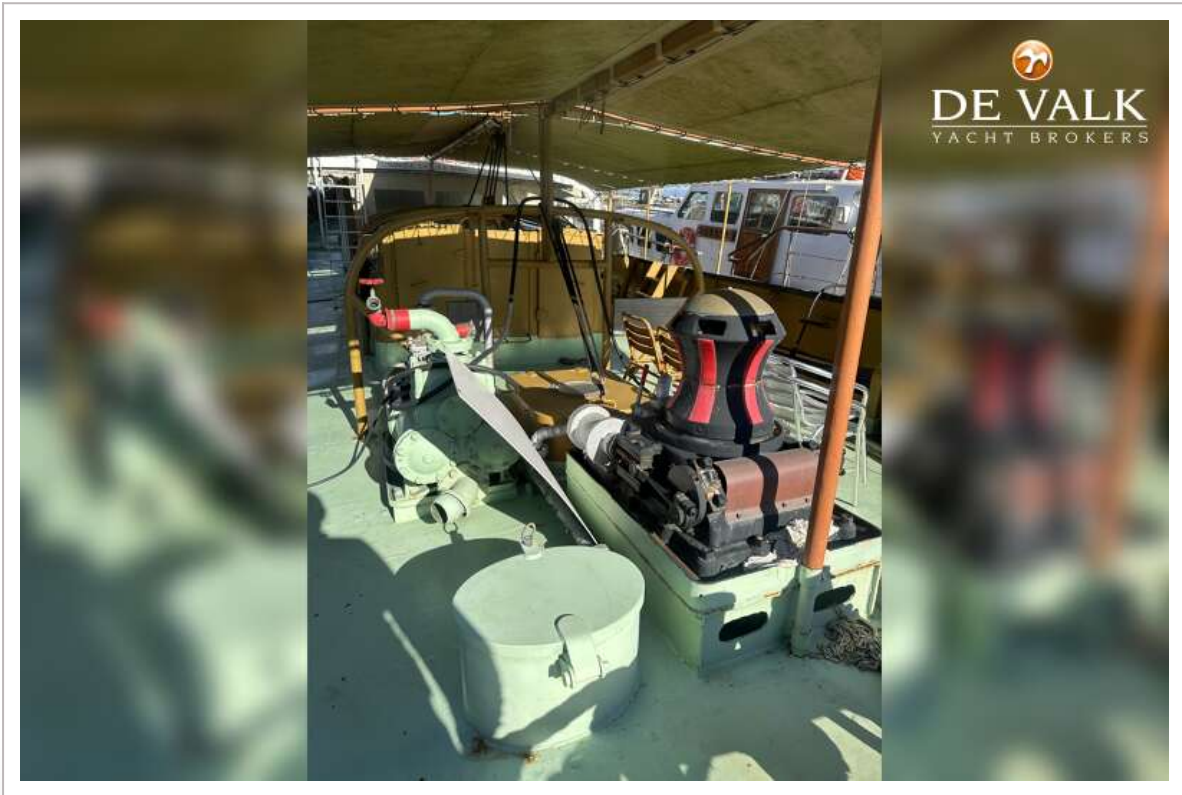
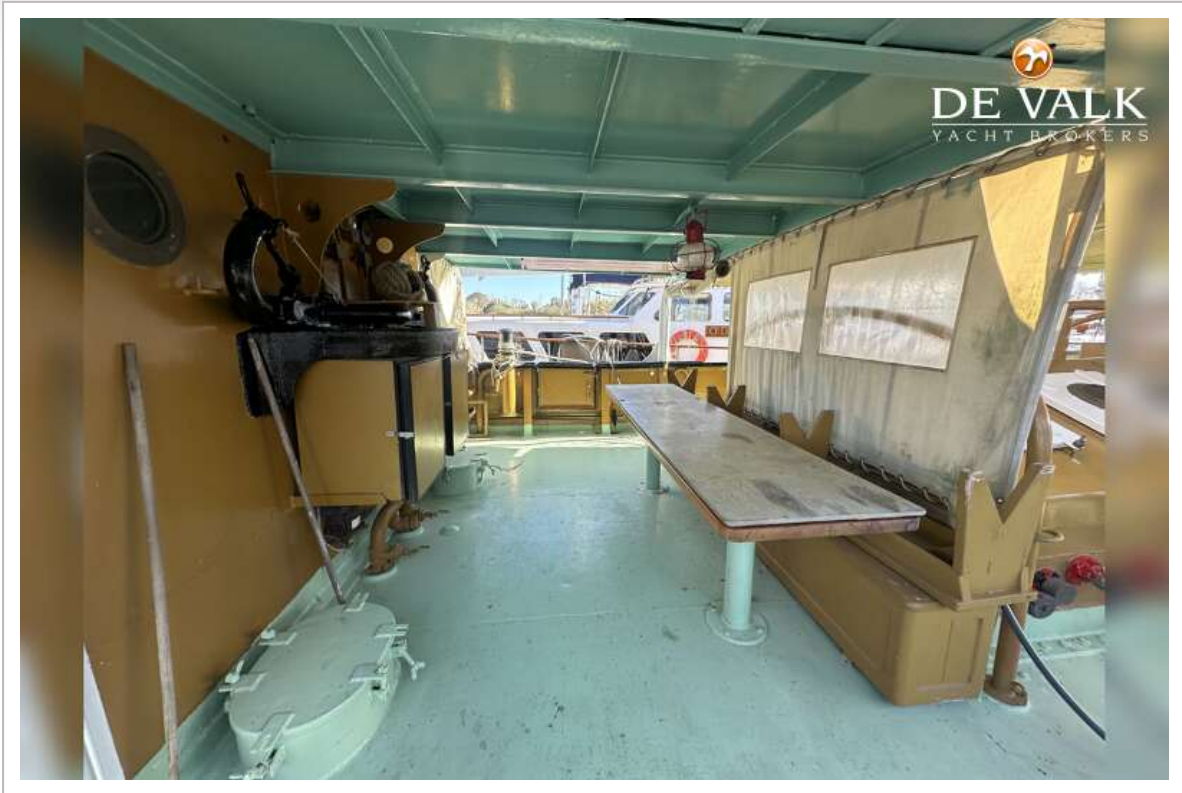

DE VALK
YACHT BROKERS



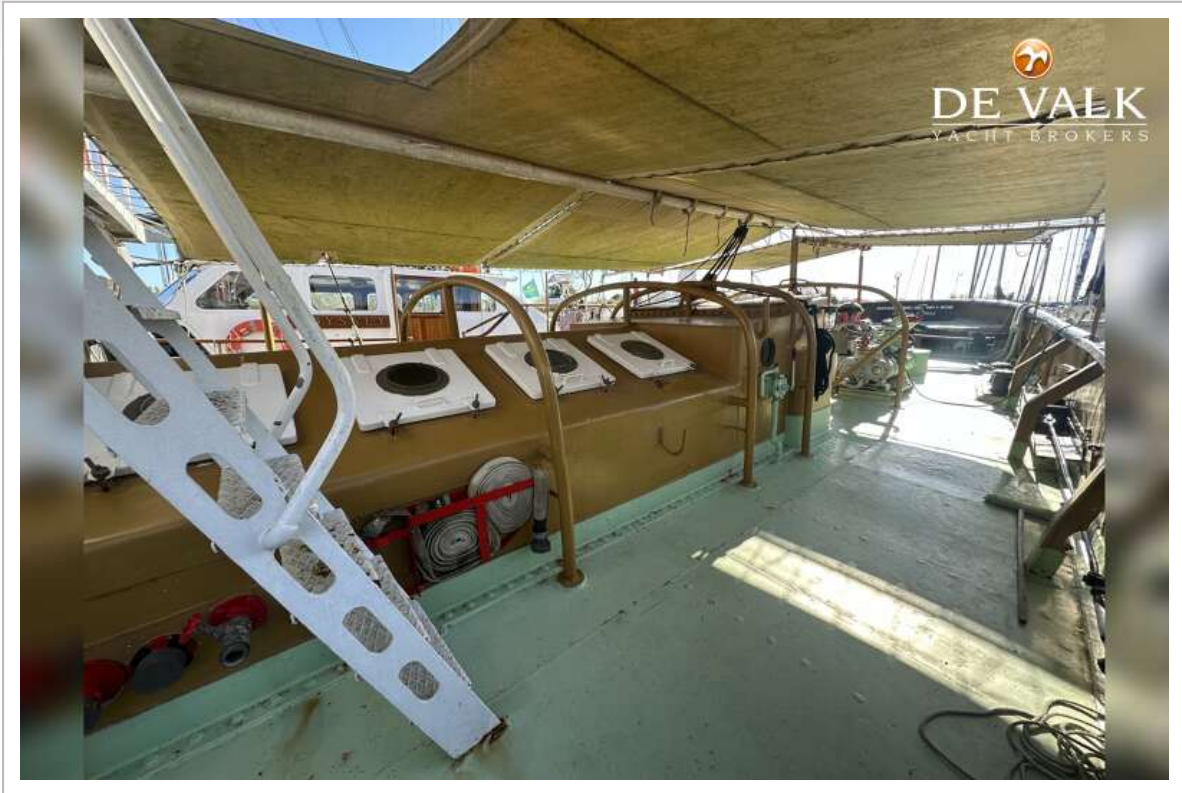

DE VALK
YACHT BROKERS



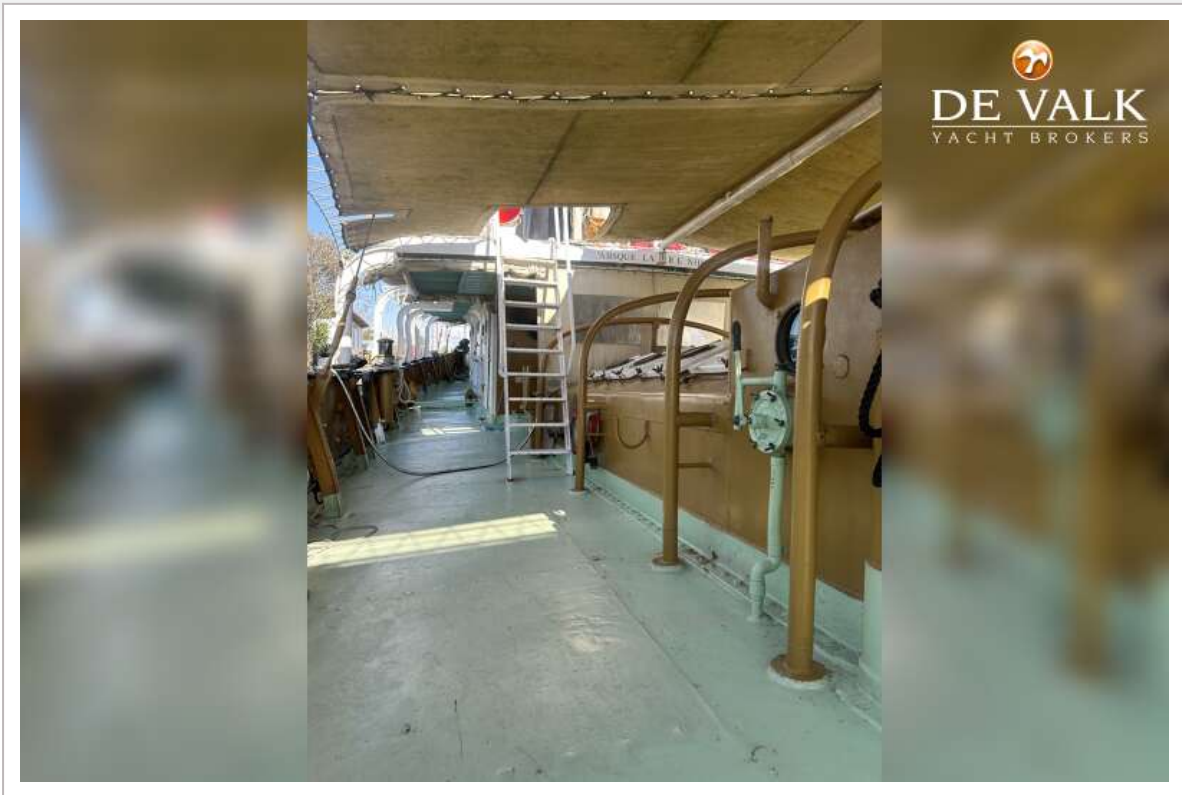
STEAM TUG 31M



STEAM TUG 31M



STEAM TUG 31M




DE VALK
YACHT BROKERS



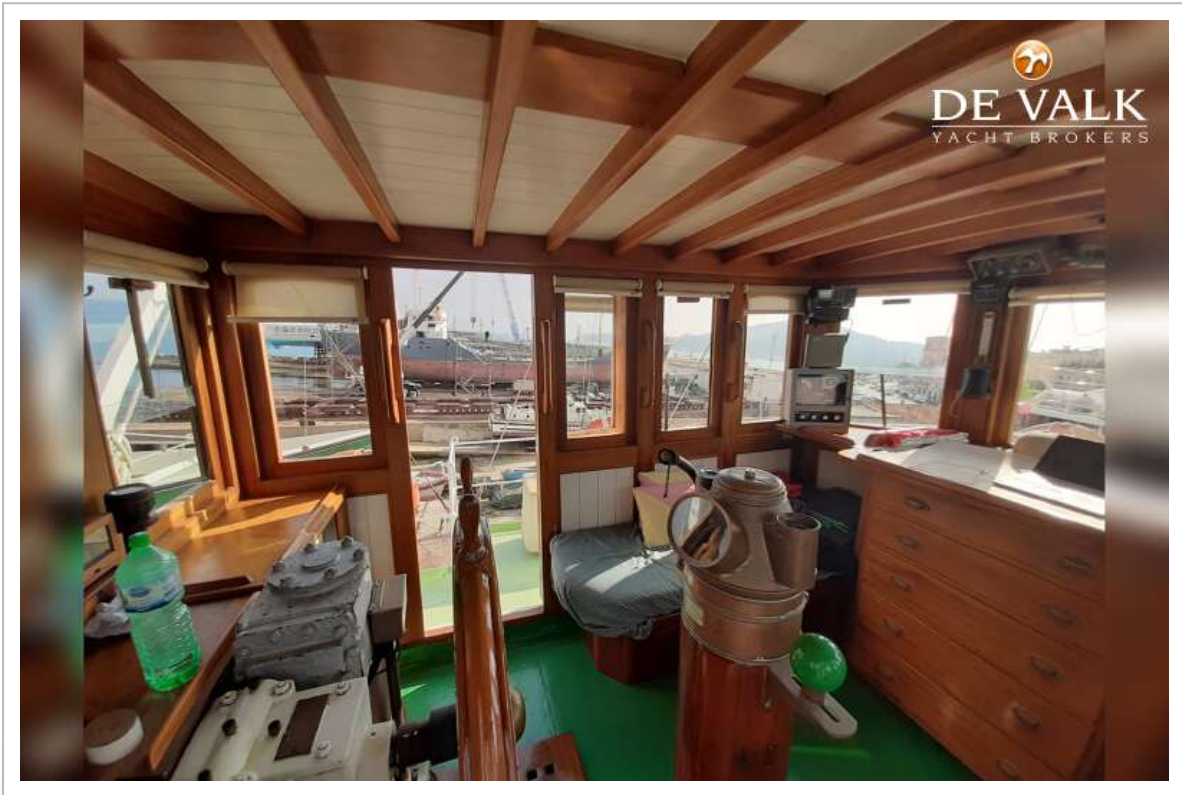

DE VALK
YACHT BROKERS



STEAM TUG 31M



STEAM TUG 31M



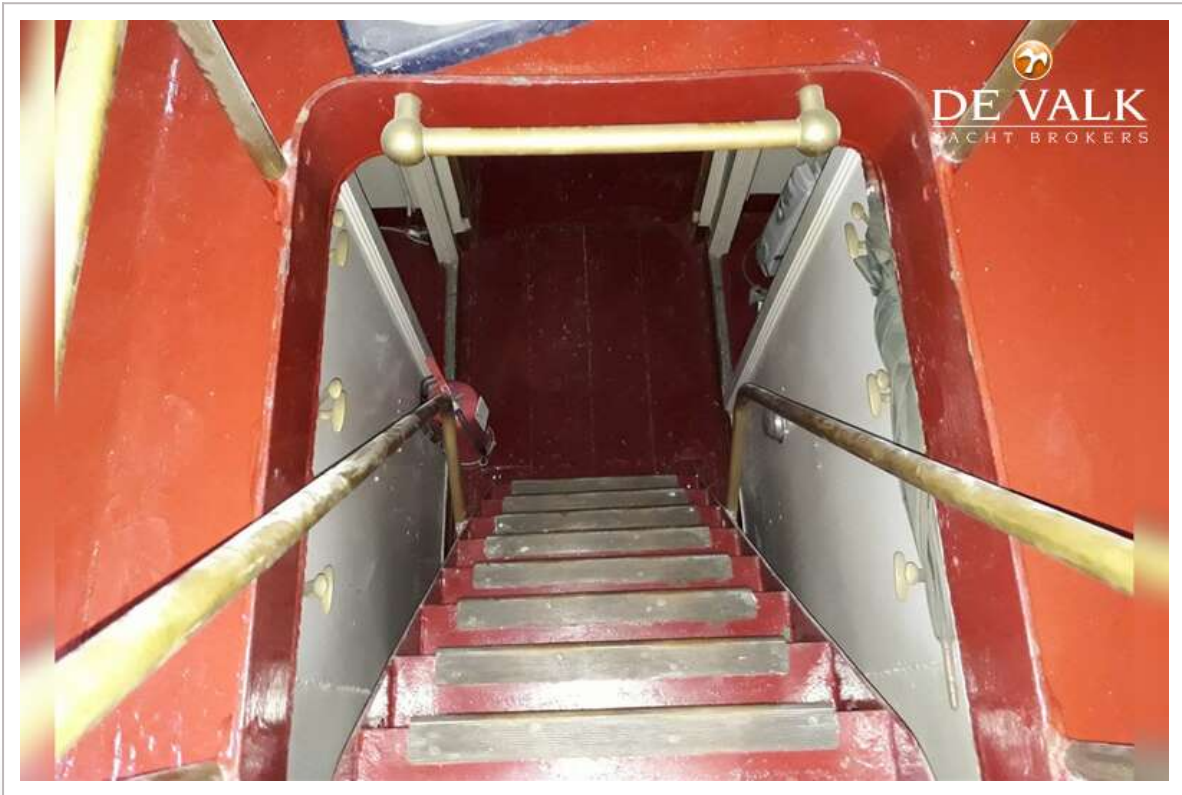
STEAM TUG 31M



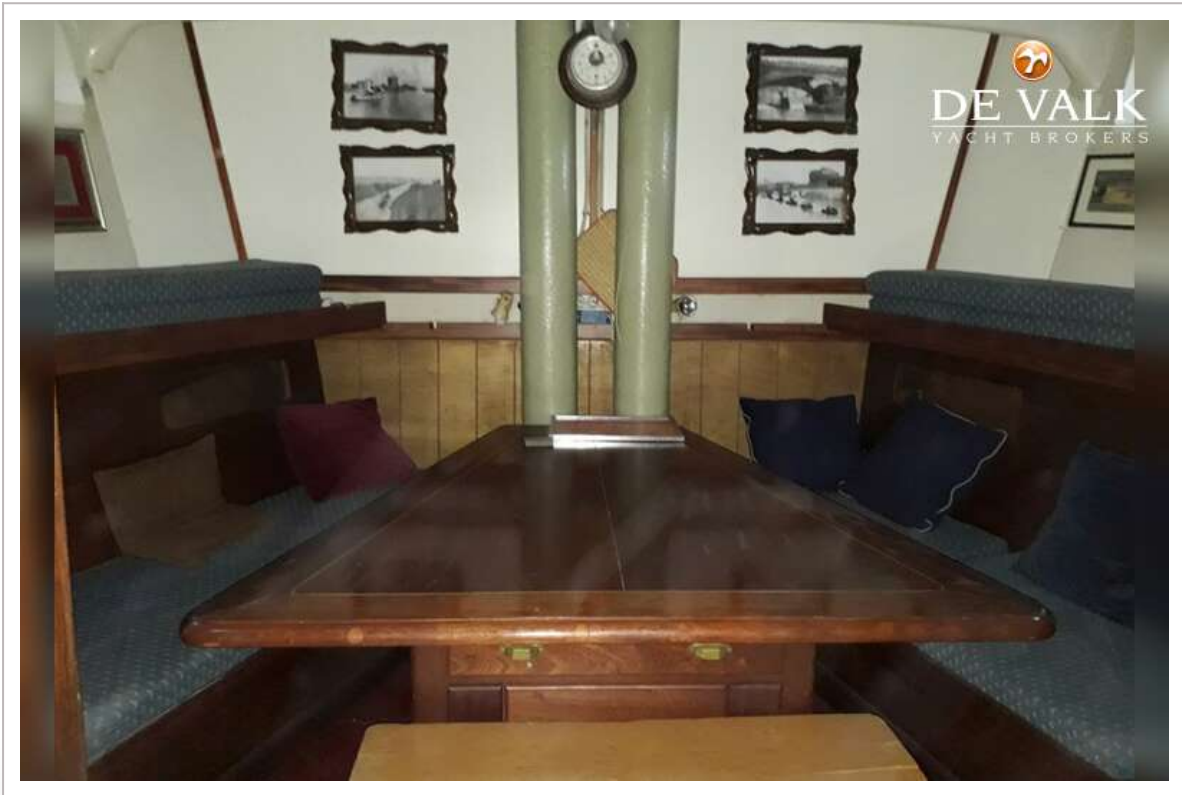
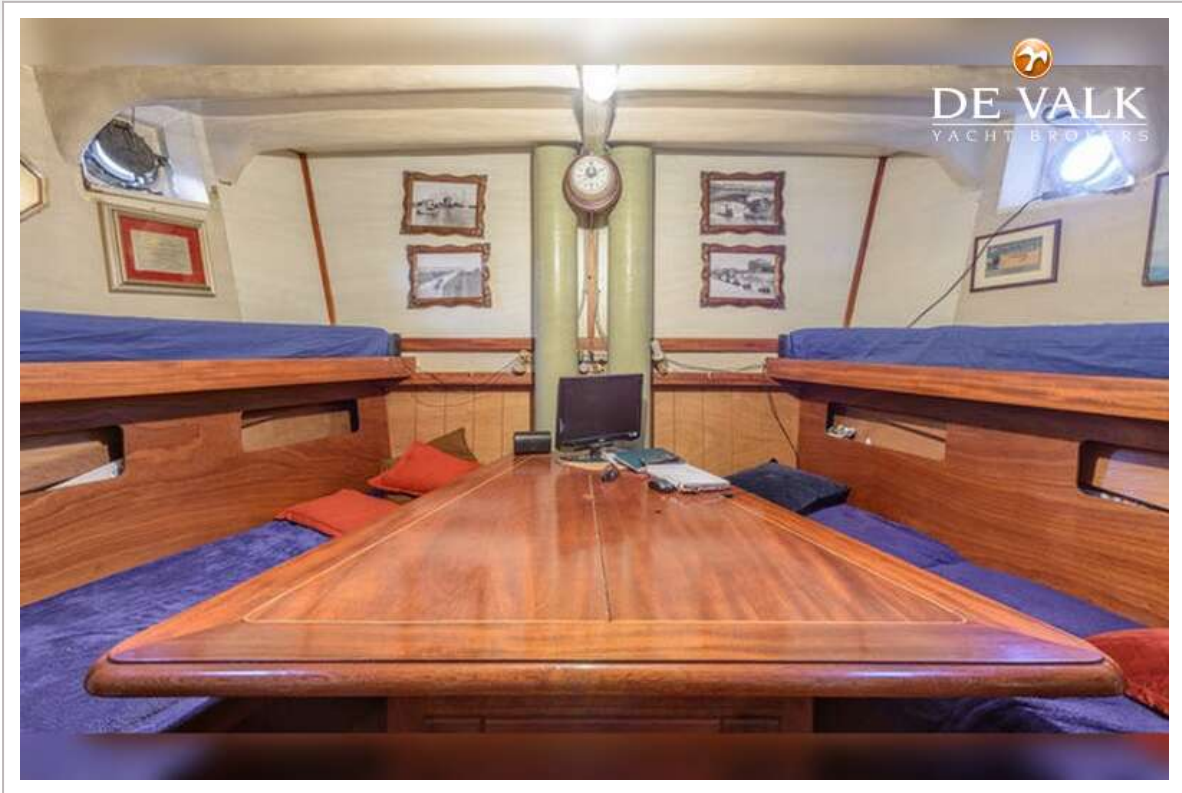
STEAM TUG 31M



STEAM TUG 31M



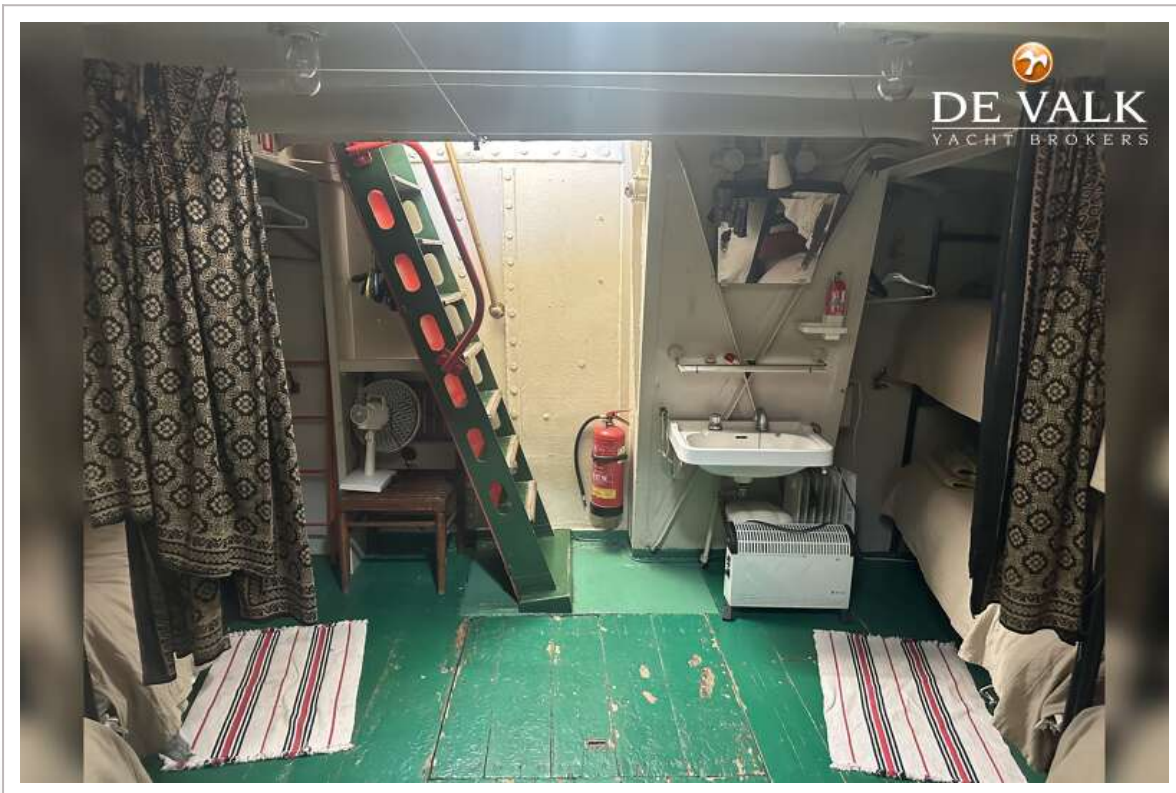
STEAM TUG 31M



STEAM TUG 31M



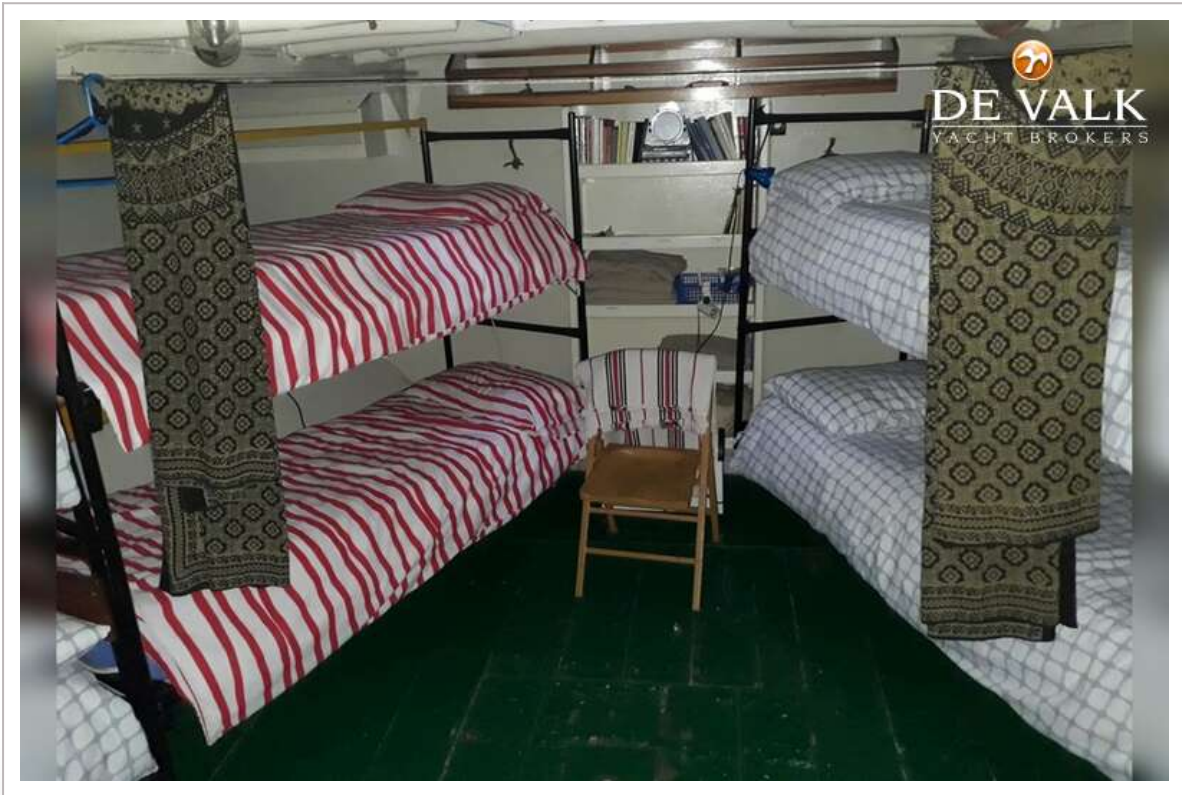
STEAM TUG 31M



STEAM TUG 31M



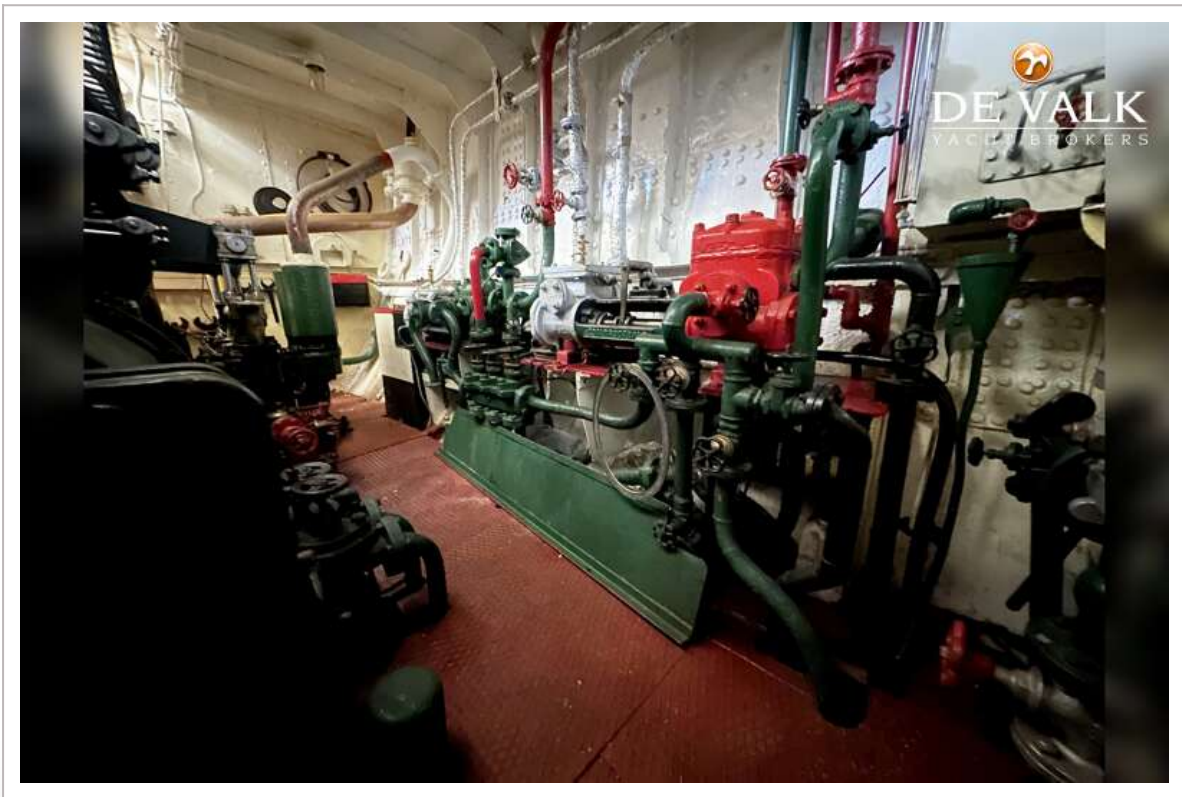
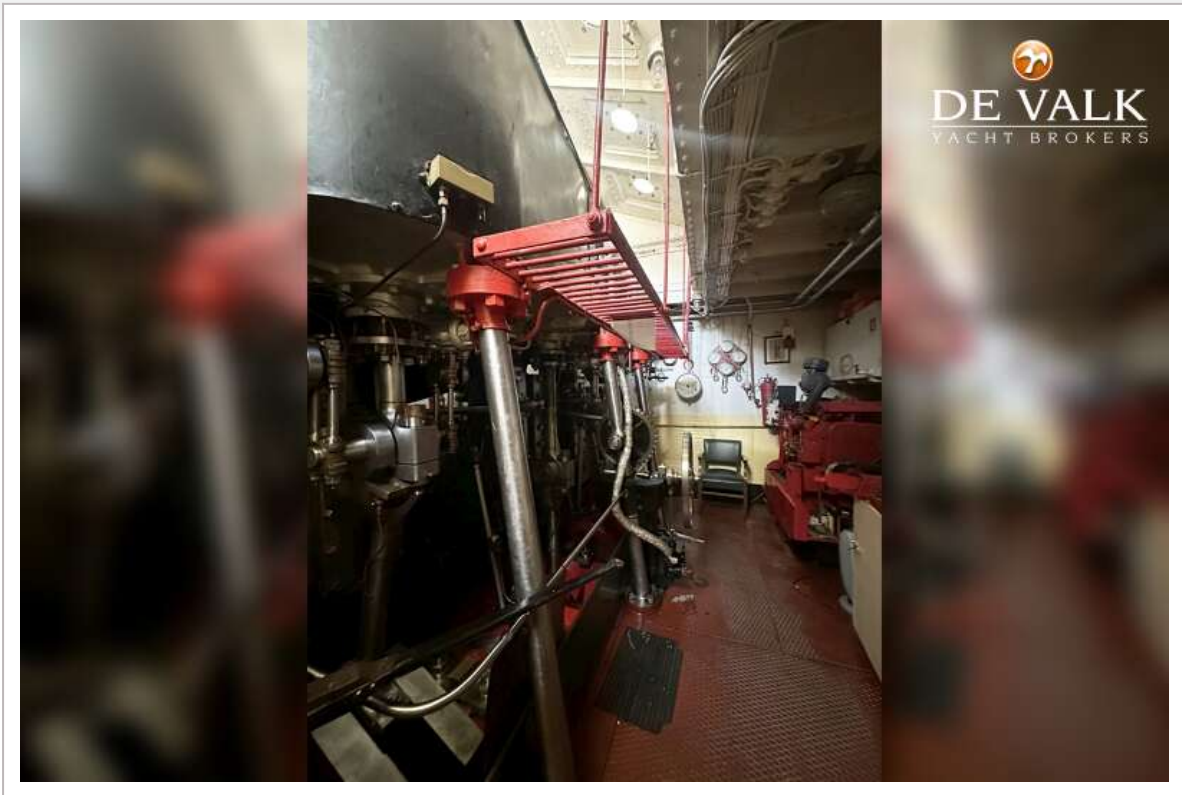
STEAM TUG 31M



STEAM TUG 31M



STEAM TUG 31M



STEAM TUG 31M

