



DE VALK
YACHT BROKERS



JOSHUA 40



DE VALK
YACHT BROKERS

KOMMENTARE DES MAKLERS

Mary af Rövarhamn is a 40-foot Joshua-type steel ketch, a vessel that carries the soul of legendary adventures and conquers the hearts of those who sail her. Proportionally overdimensioned in every detail, she offers strength and safety in any weather. And inside, an interior that surprises with its timeless beauty, a warm and inviting haven of mahogany charm that feels like home, even in the farthest corners of the world.

Per Engdahl

TECHNISCHE DATEN

| | | | |
|----------------------|-------------------------|-------------------|------------------------|
| Maße | 12.20 x 3.68 x 1.70 (m) | Werft | META Yachts |
| Baujahr | 1983 | Kabinen | 2 |
| Material | Stahl | Kojen | 6 |
| Motor(en) | 1 x Vetus M4.55 diesel | PS/kW | 52.00 (PS), 38.27 (kW) |
| Verkaufspreis | Reserviert (MwSt.) | Liegeplatz | contact sales office |

KONTAKT

| | | | |
|---------------------|-----------------------------|----------------|------------------|
| Verkaufsbüro | De Valk Sweden | Telefon | +46 72 358 50 74 |
| Adresse | Throughout Sweden Sweden | E-Mail | sweden@devalk.nl |

HAFTUNGSAUSSCHLUSS

Diese Angaben erfolgen nach bestem Wissen, können jedoch nicht garantiert werden.



ALLGEMEIN

| | |
|----------------------------------|---------------------------|
| Modell | JOSHUA 40 |
| Typ | Segelyacht |
| Rumpflänge (m) | 12,20 |
| Wasserlinienlänge (m) | 10,50 |
| Breite (m) | 3,68 |
| Tiefgang (m) | 1,70 |
| Durchfahrtshöhe (m) | 16,00 |
| Baujahr | 1983 |
| Werft | META Yachts |
| Land | Frankreich |
| Entwerfer | Jean Knockner |
| Gewicht (t) | 16 |
| Ballast (Ton) | 4 (lead) |
| Rumpfmateriale | Stahl |
| Rumpffarbe | White |
| Haut-dicke Rumpf (mm) | 4-13 |
| Art Kiel | Long keel |
| Material Aufbauten | Steel |
| Haut-dicke Aufbauten (mm) | 3 |
| Deckmaterial | Steel |
| Deck Finish | Treadmaster smooth (2020) |
| Antifouling (Jahr) | October 2024 |
| Dorado Belufter | Bronze |
| Fenster Einfassung | Goïot |
| Decks Luke | Goïot |
| Isolation | 30mm |
| Treibstofftank (Liter) | 160 + 180 |
| Treibstofftank 2 (Liter) | 220 |
| Trinkwassertank (Liter) | 150 + 250 |
| Fäkaelien Tank (Liter) | 50 |



JOSHUA 40

| | |
|---------------------------------|---|
| Radsteuerung | ja |
| Aussen Steuerung | ja |
| Pinne | ja |
| Weitere Info Farbe und Anstrich | New antifouling october 2024 |
| Weitere Info | Under water window 200mm diameter, acrylic glass 30mm thick |

UNTERKUNFT

| | |
|-------------------------|---|
| Kabinen | 2 |
| Kojen | 6 |
| Innen | Mahogany |
| Einteilung | Center cockpit and aft cabin |
| Salon | U-shaped sofa, fine mahogany interior |
| Standhöhe Salon (m) | 1.90 |
| Heizung | Hcalory Diesel water heater 5kWh (2023) |
| Heizung 2 | Gastherm electric water heater 3 kW |
| Navigation Zenter | ja |
| Kartentisch | ja |
| Achterkabine | ja |
| Kombüse | ja |
| Spülbecken | 2 |
| Herd | Force 10 gas 2 burner |
| Ofen | Force 10 gas with grill |
| Gas-Alarm | ja |
| Kuhlschrank | Isotherm 3201 ASU |
| Hand und/oder Fusspumpe | ja |
| Toilet | Jabsco Comfort (2024) |
| Kleiderschrank | ja |

MASCHINEN

| | |
|-------------|-------|
| Motoranzahl | 1 |
| Marke | Vetus |



| | |
|-------------------------------------|---|
| Typ | M4.55 |
| PS | 52 |
| kW | 38.27 |
| Kraftstoffart | Diesel |
| Installiert im Jahr | 2013 |
| Motorstunden | 3200 |
| Antrieb | Schraubenwelle |
| Welle Dichtung | ja |
| Propeller Typ | Fixed |
| Propellerblätter | 3 blades |
| Hand Bilgenpumpe | 2 Whale Gusher 25 |
| Elektrische Bilgenpumpe | Rule 3700 |
| Bilge Alarm | ja |
| Batterien | ja |
| Starterbatterie | ja |
| Versorgungsbatterie | 12V Sunbeam Smart Lithium Multi 648 Ah (2023) |
| Batterie Monitor | ja |
| Batterie Ladegerät/Umwandler | Invertek Super Combi 70A/1500W (pure sinus) |
| Wind generator | D400 Eclectic Energy |
| Landstrom | ja |
| Trenn transformator | Digital Marin 3.5kVA 115/230 in - 230 out |

NAVIGATION

| | |
|-----------------------------|--|
| Kompass | Handheld: Sestrel Radiant |
| Elektrisches Kompass | Simrad RC 42 |
| Tiefenanziege | Nasa Clipper |
| UKW | Nexus NX2500 |
| Autopilot | Simrad AC42 & Raymarine type 2 |
| Windfahne Steuerung | Aries (needs service) |
| Radar | Furuno |
| GPS | GPS1: Garmin 152, GPS2 (for autopilot and VHF): Matsutec |



| | |
|-------------------------------|--|
| Navtex | Nexus NX2600 |
| PC Computer | Fit-PC2 with 19 inch screen for navigation |
| AIS Transceiver | True Heading CTRX |
| Navigation Beleuchtung | Running lights DHR (2024) + steam light with led + led tricolor. |

AUSRÜSTUNG

| | |
|-------------------------------------|---|
| Sonnenschirm | ja |
| Badeleiter | Integrated in hull on each side of the aft |
| Anker | CQR 27kg |
| Ankerkette | 12mm. 60+30m |
| Anker 2 | Delta 25kg and Danforth 20kg (both metallized 2021) |
| Ankerwinde | Goiot manual |
| Beiboot | ja |
| Heckkorb | ja |
| Bugkorb | ja |
| Rettungsinsel | VIKING RescYou Pro |
| Rettungsinsel (Pers) | 6 |
| Letzte Wartung Rettungsinsel | 2019 |
| Rettungsboje | ja |
| Sicherheitsleine auf Deck | ja |
| Radar Reflektor | ja |
| Fenderkissen | ja |
| Festmacher | ja |
| Satellit | Iridium 9555A |
| Uhr - Barometer | Pilot |

RIGG

| | |
|----------------------|-----------------------|
| Rig | Ketch |
| Stehendes Gut | Stainless wire 6-10mm |
| Material Mast | Aluminum |
| Salings | ja |



| | |
|----------------------------------|-----------------------------------|
| Großsegel | Doyle Offshore (2014) |
| Großsegel-Persenning | Lazybag |
| Kutter Stag | ja |
| Besan | Doyle Offshore (2014) |
| Besansegel-Persenning | Lazybag |
| Besanstagesegel | Victor Tonnerre (original) |
| Fock | Victor Tonnerre (original) |
| Genua | Hamel Sails (2013) with uv-cover. |
| Rollreffanlage | Furlex S300 |
| Spi | Victor Tonnerre (original) |
| Sturmfock | ja |
| Baumniederhohler | ja |
| Primare Schot Winschen | 2 Hutton-Arco 52ST (2018) |
| Sekundaire Schot Winschen | 2 Hutton-Arco 52ST (2018) |
| Fall Winschen | Lewmar |
| Spi-Baum | 5,5m Nirvana masts |
| Weitere Info | 2 Wichard Gyb'Easy boom brakes |

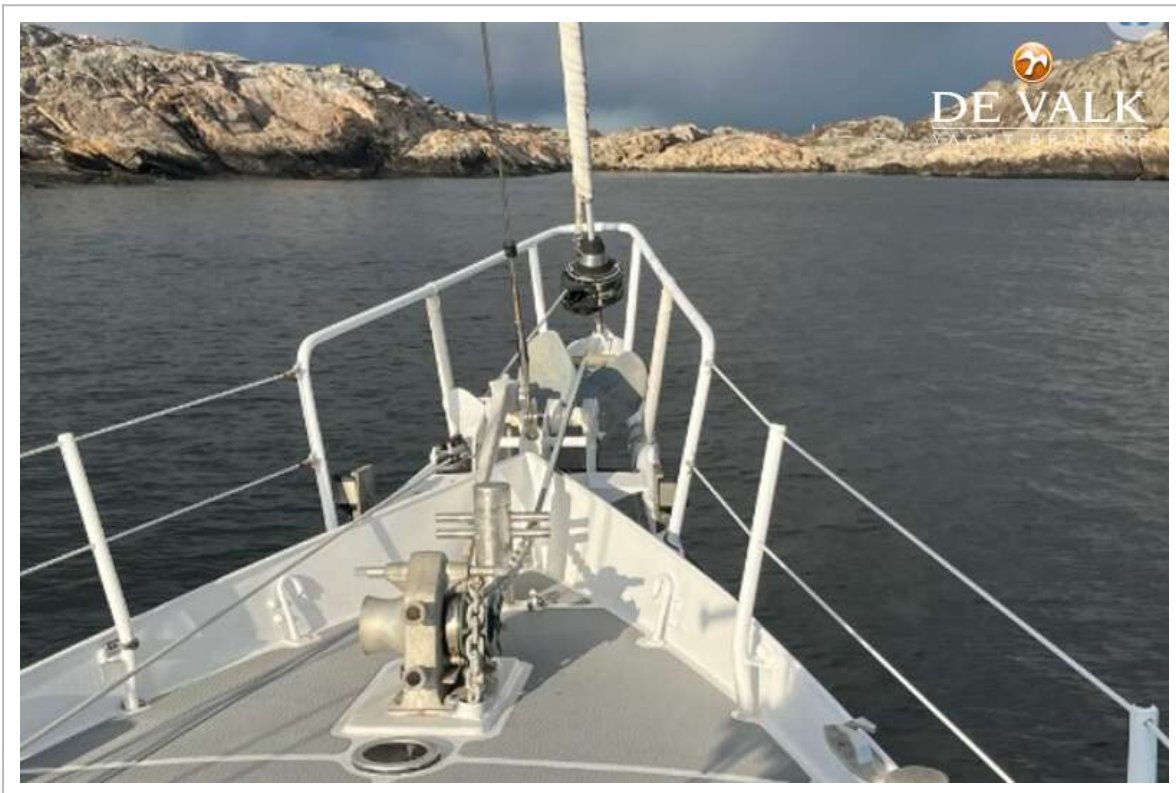




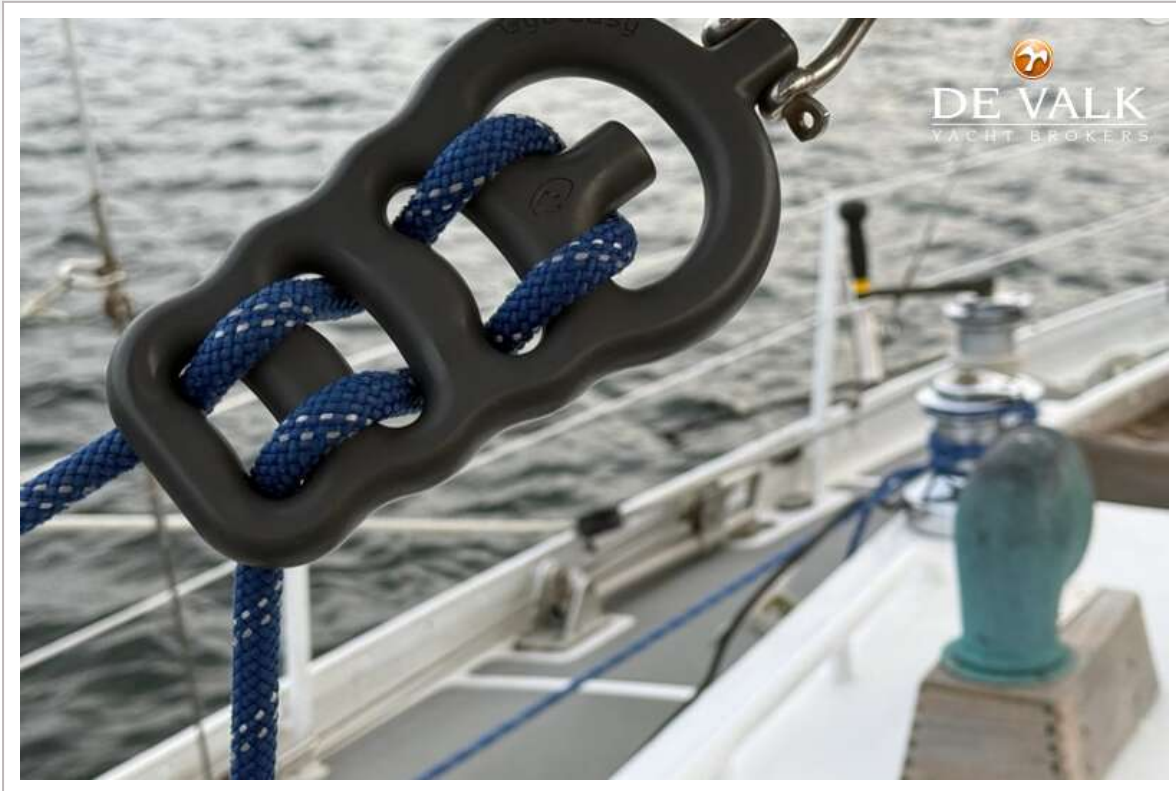


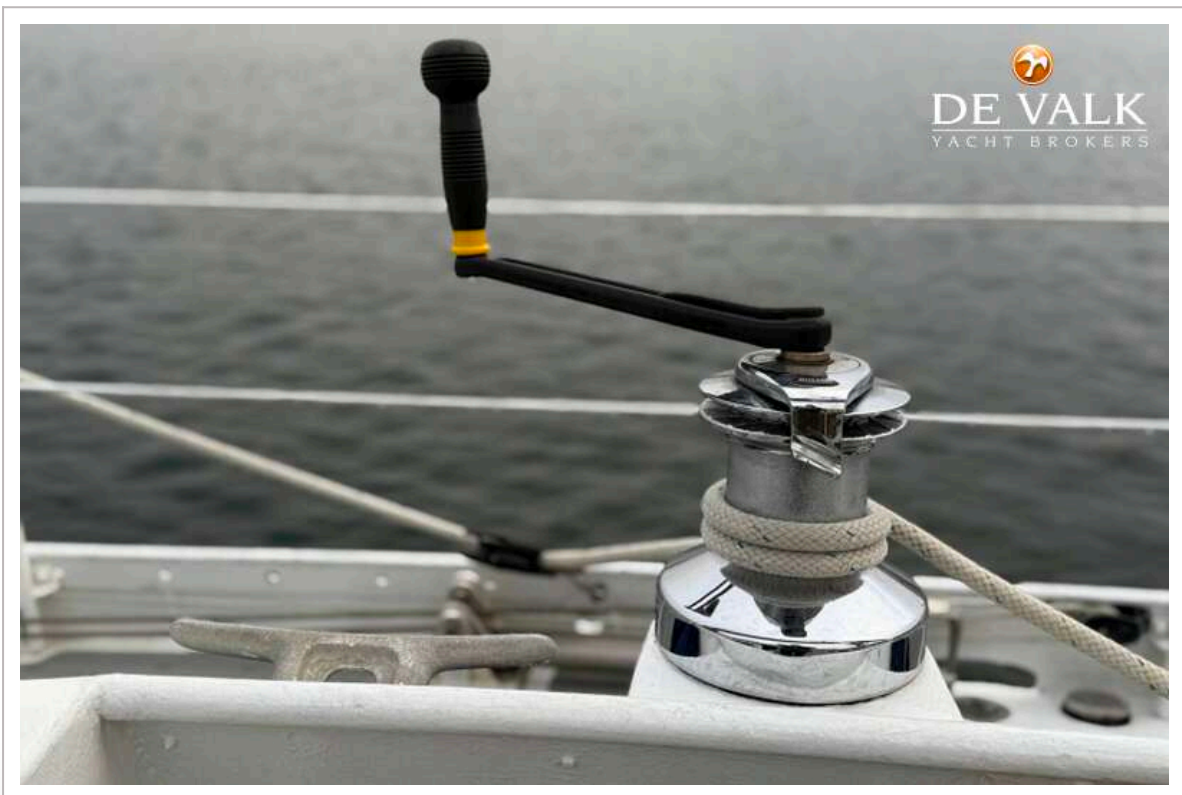


JOSHUA 40



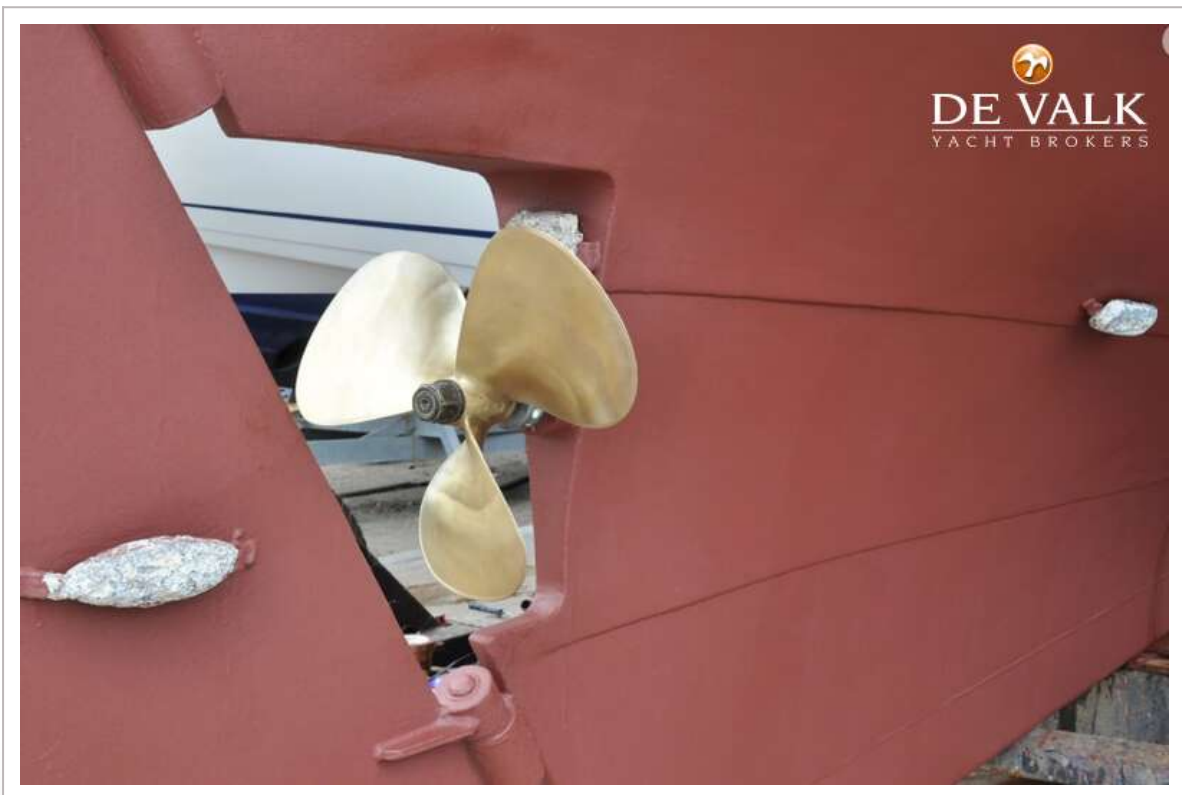




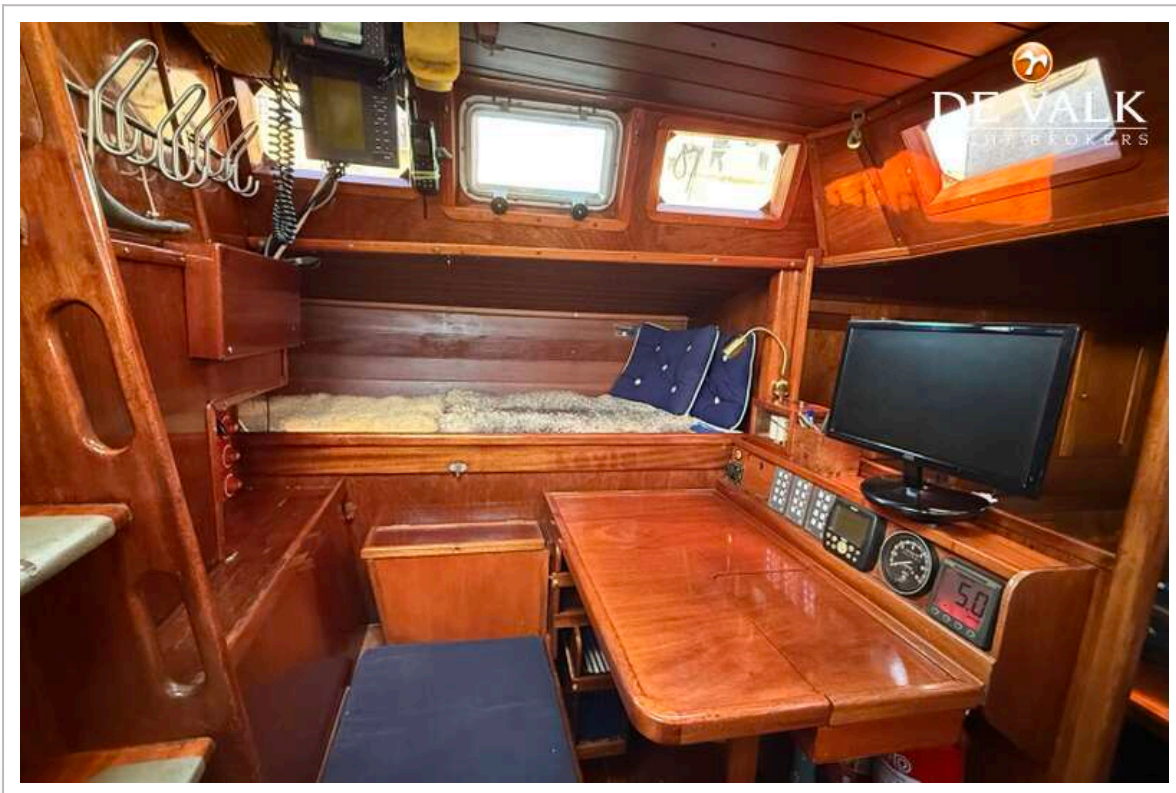


JOSHUA 40





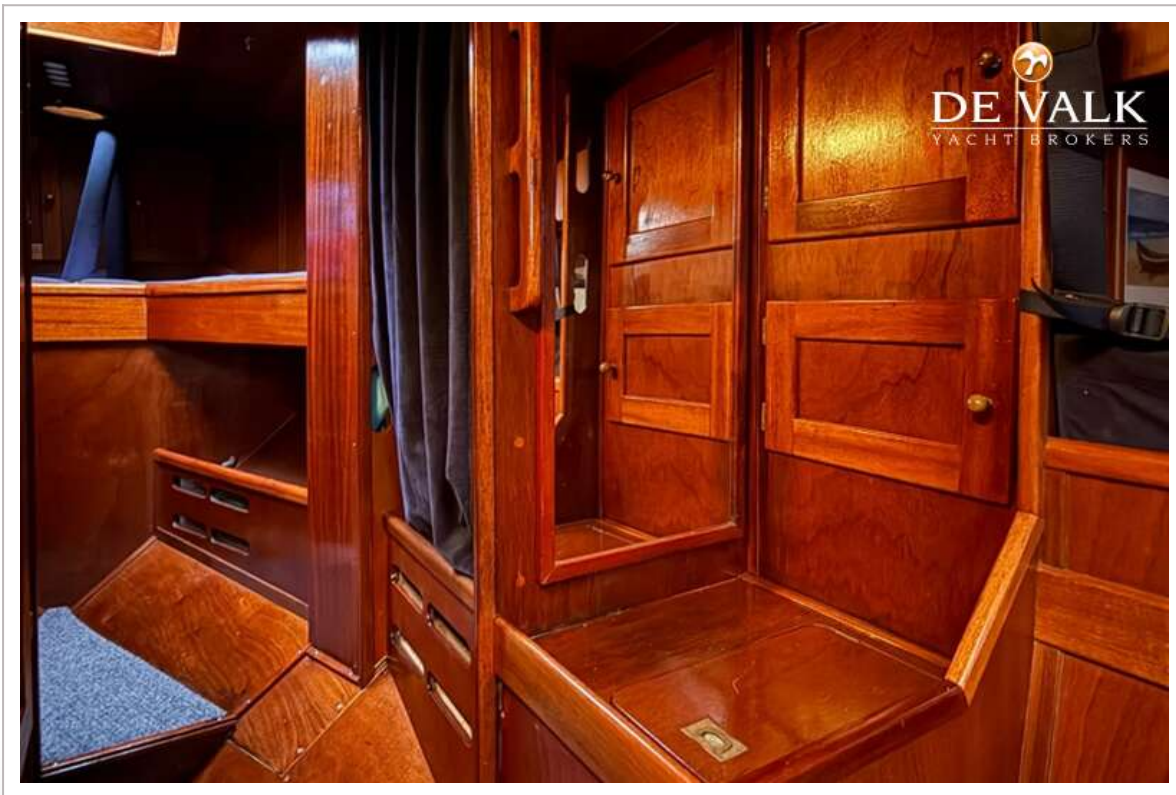
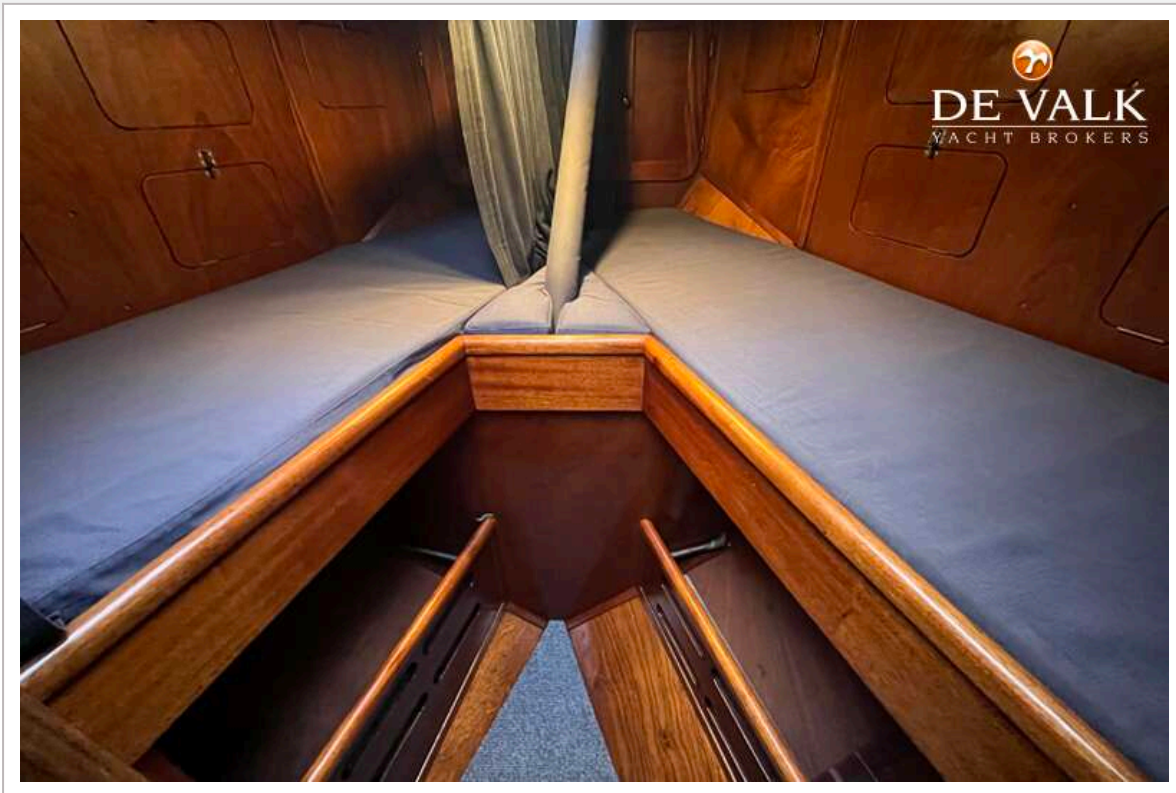
JOSHUA 40



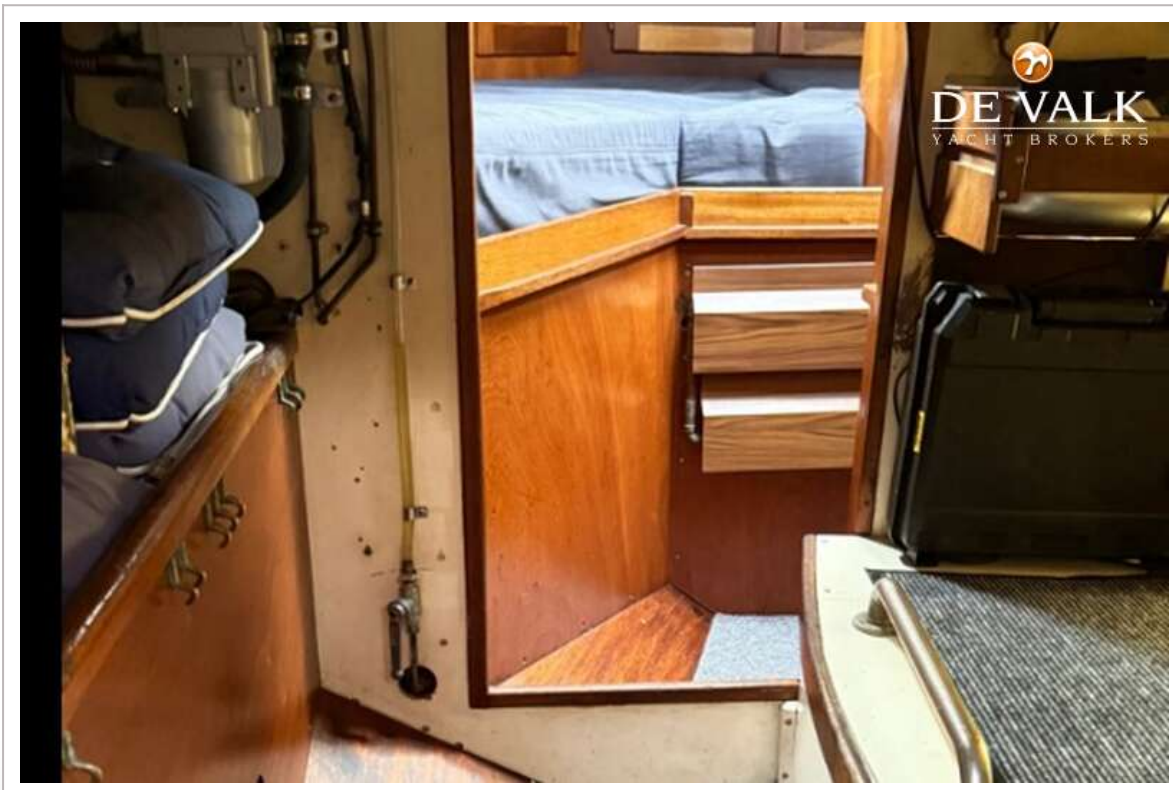
JOSHUA 40

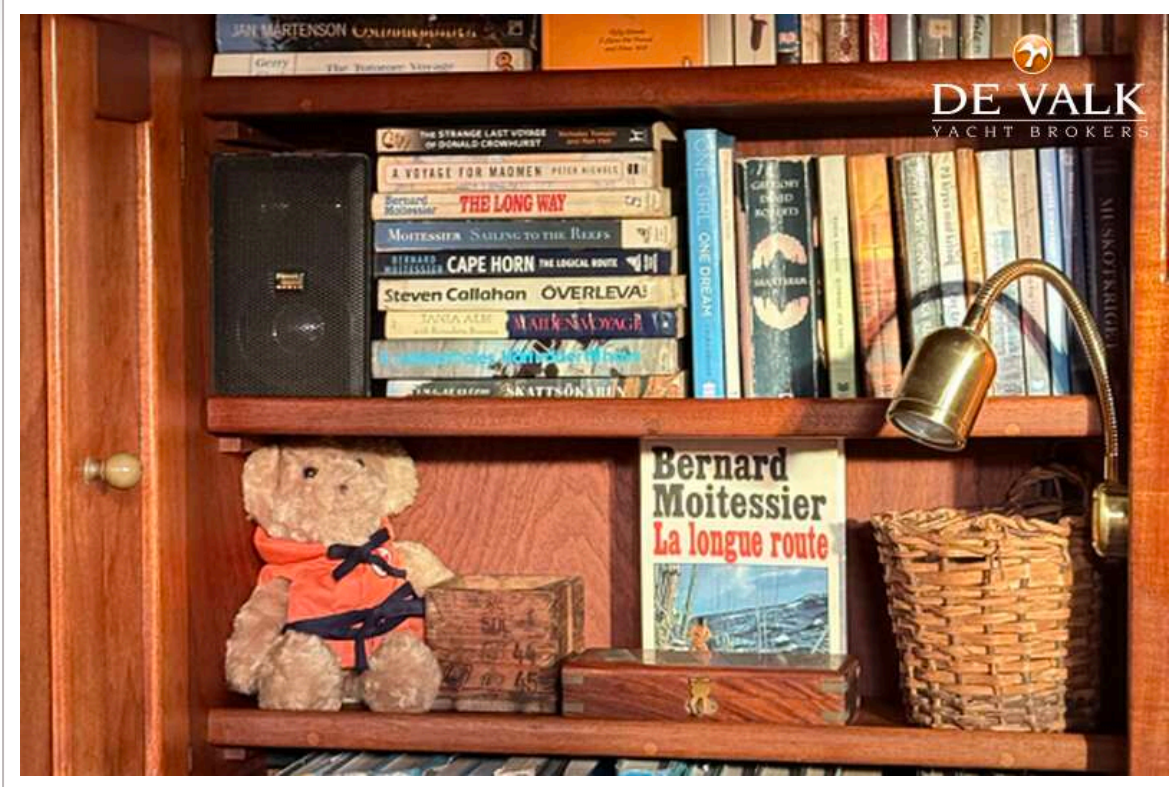


JOSHUA 40

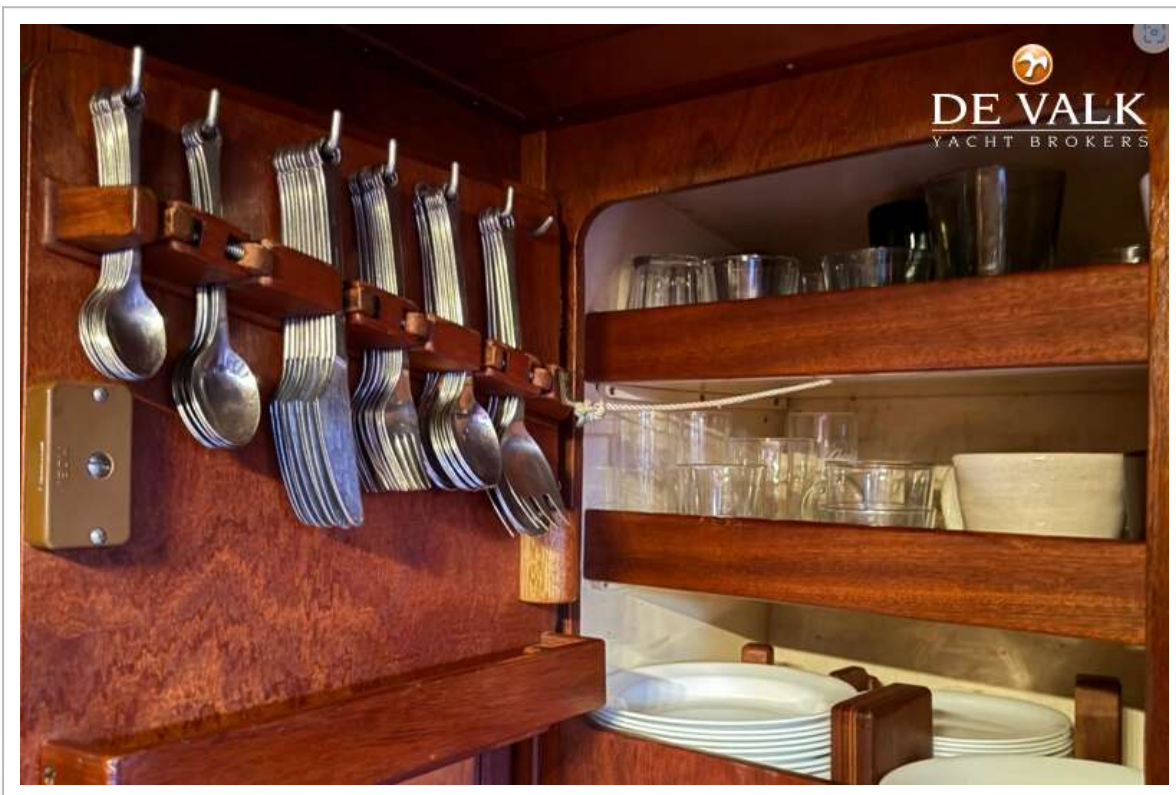


JOSHUA 40









JOSHUA 40

