



DE VALK
YACHT BROKERS

HALLBERG RASSY 49 KETCH



DE VALK
YACHT BROKERS

HALLBERG RASSY 49 KETCH

BROKER'S COMMENTS

"The Hallberg-Rassy 49 is a true blue water classic, a superb boat with extended cruising capability, also for worldwide cruising, or one to live aboard for long periods of time. This is the ideal combination of rugged construction, unusual comfort both on deck and below, and excellent handling characteristics on all points of sail. The 4 new sails are all furling. The owners enjoyed the boat for almost 20 years and maintained her with a lot of love. The boat is moored a bit south of Rotterdam, please contact our office in Sint Annaland, to make an appointment for a viewing."

Nick Lanting

SPEZIFIKATIONEN

Maße	14,96 x 4,42 x 2,20 (m)	Baumeister	Hallberg-Rassy Varvs AB
Baujahr	1984	Kabinen	3
Material	GFK	Schlafplätze	10
Motor(en)	1 x Volvo Penta TMD41B diesel	Pk/Kw	150 (pk), 110,4 (kw)
Angebotspreis	EUR 278.000 (Mehrwertsteuer: bezahlt)	Liegeplatz	not at sales office

KONTAKT

Geschäftsstelle	De Valk Sint Annaland	Telefon.	+31 166 601 000
Adresse	Koelhuisweg 4 4697 RM Sint Annaland The Netherlands	Fax	+31 (0)166 654 267
		E-Mail -Adresse	sintannaland@devalk.nl

DISCLAIMER

Obwohl wir uns der Richtigkeit, Vollständigkeit und Aktualität unserer Informationen größte Sorgfalt widmen, können aus den Informationen keine Rechtsansprüche abgeleitet werden.



HALLBERG RASSY 49 KETCH

GENERAL

Modell	HALLBERG RASSY 49 KETCH
Typ	Segelyacht
Rumpflänge (m)	14,96
Wasserlinienlänge (m)	12,50
Breite (m)	4,42
Tiefgang (m)	2,20
Durchfahrtshöhe (m)	21,65
Stehhöhe (m)	2,00
Baujahr	1984
Werft	Hallberg-Rassy Varvs AB
Land	Schweden
Entwerfer	Olle Enderlein & Christoph Rassy
Gewicht (t)	20
Ballast (Ton)	Blei 8
Brutto tonnage	20
Netto tonnage	6
CE Norm	NA
Rumpfmateriale	GFK
Rumpffarbe	Weiß With dark blue striping
Rumpfform	S-Spant
Art Kiel	Langkieler
Schlingerkielen	ja
Material Aufbauten	GFK
Stossliste	Brass
Deckmaterial	GFK
Deck Finish	Teak White spray painted (Alexseal 2-components) in 2012
Deck Finish Aufbauten	Teak White spray painted (Alexseal 2-components) in 2012
Pflicht Bedeckung	Teak Teak on the seats and teak grating on the floor
Antifouling (Jahr)	2022
Dorado Beluffer	5x Stainless steel with LED lights & stainless steel protect bar



HALLBERG RASSY 49 KETCH

Decksluke	7 x Mosquito screen
Bullauge	Aluminium All with a watertight lockable alu flap & 12 x Mosquito screen
Isolation	Extra insulation along hull applied next to beds & SB in salon
Treibstofftank (Liter)	Edelstahl 1 x 400 (under the engine)
Treibstofftank 2 (Liter)	Edelstahl 2 x 300 (under saloon sofa seats)
Füllstandsanzeige (Treibstofftank)	Digital Tank Monitor
Treibstoff Tagestank (Liter)	Edelstahl 30 (above engine + fuelfilter with waterseparator)
Füllstandsanzeige (Tagestank)	ja
Trinkwassertank (Liter)	GFK 1450
Füllstandsanzeige (Trinkwasser)	Digital Tank Monitor
Fäkaelien Tank (Liter)	Edelstahl 2 x
Fäkaelien Tankablauf	Both with 3-way valves and directly in water under water line
Radsteuerung	Leather covered stainless steel steering wheel
Aussen Steuerung	Kette Steuerung Solimar pedestal - All steering cables renewed in 2019
Not-Pinne	ja
Weitere Info Rumpf	In 2013 all through hull connections and sea cocks were renewed & the complete underwater hull was peeled. After which epoxy mats were applied and layers of epoxy were spray painted on the underwater hull. In 2022 the underwater hull was sanded, a layer of Hempel Silic Seal and a layer of Hempel Silic One Tiecoat were applied and finished with two layers of Hempel Silic One Red (a biocide-free, high-solid anti-fouling coating. A microlayer of silicone-based hydrogel provides a smooth, low-friction surface that prevents organisms from attaching to the hull and propeller). Service period of Silic One on the hull is two years
Weitere Info Farbe und Anstrich	White spray painted (Alexseal 2-components) hull with blue striping & waterline (Alexseal 2-components) & all portholes spray painted (Alexseal 2-components) in 2008
Weitere Info	Very solid and safe fixed hardtop, laminated to the superstructure & white with dark blue striping spray painted in 2013. Teak on the roof of hardtop. The front windows can be opened (centre window full, other half). The inside of the fixed hardtop has been refurbished in 2008 and dimmable LED lights were applied. The chart tables in the cockpit, on both sides of the entrance, were replaced by grey HPL plates in 2022. In cold and heavy weather the cockpit can be closed quickly and easily with a divisible cockpit cover
Weitere Info	The original sliding entrance hatch has been replaced in 2013 by a transparent plastic sliding hatch, equipped with a roll-up sunshade & the original sliding hatch is also present. There are 2 teak entrance doors (1x with a window and 1x with a ventilation grille). Air vents on both aft deck locker hatches. Large locker in the cockpit



HALLBERG RASSY 49 KETCH

Weitere Info

There are additional windows available for the deck hatches, in case of condensation risk in the winter period

UNTERKUNFT

Kabinen	3
Kojen	10
Innen	Mahagoni Upholstery & curtains renewed in saloon in 2023
Fussboden	Teak und Holly
Achterdeck	ja
Salon	With L-shaped saloon sofa on SB and a saloon sofa on PS (both convertible to bert 2,10 x 0,55 m). Storage space behind the backrests and in cabins above. SB Bunk bed: 2,05 x 0,55 m & PS Bunk bed: 2,00 x 0,55 m. All with lee-cloths
Standhöhe Salon (m)	2,00
Heizung	Diesel Heißluft 1x Webasto HL90 (2008)
Heizung 2	1x Heater convector connected in 2009 to internal cooling engine
Kartentisch	On starboard side - Headroom : 1,87 m
Achterkabine	1 x
Dinette	ja
Umbaubar Koje	ja
Kombüse	On SB - U-shaped - Headroom : 1,87 - 1,92 m
Arbeitsfläche	Duropol Renewed in 2007
Spülbecken	Edelstahl 2 x
Herd	Gas Force 10 - 3 burners
Ofen	Force 10 oven/grill
Gas-Alarm	With electric remote controlled gas valve and ventilation
Mikrowelle	Severin (2013)
Kuhlschrank	Top loader with a 24 Volt compressor
Gefrier Truhe	New in 2023 : Front loader with drawers & a 24 Volt compressor
Warmwasser System	220V + Motor 1x 80 Litre & 1 x 10 Litre
Wasserdruck System	elektrisch Jabsco Flo (2018)
Hand und/oder Fusspumpe	Foot pump (salt water) & hand pump (fresh water)



HALLBERG RASSY 49 KETCH

Kaffeemaschine	Kirk Electronic Coffee machine 24 Volt
Eignerkabine	Doppelbett + Einzelbett In the aft cabin - Headroom : 1,95 - 2,07 m
Länge Bett (m)	2,00 x 1,25 & 2,00 x 0,80
Kleiderschrank	Regale und hängend
Badezimmer	en suite Headroom : 1,84 m
Toilet	en suite
Toilette System	elektrisch Jabsco (2015) with a fresh water flush pump (new in 2023)
Handwaschbecken	im Badezimmer
Dusche	en suite Headroom : 1,72 - 1,88 m
Weitere Info	LED strips in aft cabin - Headroom in hallway : 1,74 - 1,76 m
Gästekabine 1	Stockbett Starboard side in front - Headroom : 2,03 m
Länge Bett (m)	2,00 x 0,80 & 2,00 x 0,70
Kleiderschrank	Regale und hängend
Badezimmer	gemeinsam Headroom : 1,92 - 2,07 m
Toilette	gemeinsam
Toilette System	elektrisch Jabsco
Handwaschbecken	im Badezimmer
Dusche	gemeinsam Headroom : 1,86 m
Weitere Info	Headroom in hallway : 2,03 m
Gästekabine 2	Einzelbett In workshop in the bow - Headroom : 1,86 - 1,97 m
Länge Bett (m)	2,00 x 0,65
Kleiderschrank	Regale
Weitere Info	The front cabin has been changed to a workshop with a V-worktop and a Scavenger's daughter mounted on it. Workshop has been painted in 2019.
Waschmaschine/Trockner Kombi	Eumenia Babynova 1000 3 KG (2009)
Weitere Info	Teak wooden cutting board in the galley
Weitere Info	Entire interior revarnished in 2019. Mostly LED lights (with remote control) & several ventilators throughout the interior

MOTOR(EN)

Motoranzahl	1
--------------------	---



HALLBERG RASSY 49 KETCH

Marke	Volvo Penta
Typ	TMD41B
PS	150
kW	110.40
Kraftstoffart	Diesel
Installiert im Jahr	2014
Höchstgeschwindigkeit (Kn)	9
Marschgeschwindigkeit (Kn)	8
Verbrauch (l/h)	4,5
Motorstunden	1891
Kühlungssystem Motor	indirekte Wärmetauscher
Antrieb	Schraubenwelle
Motor bedienung	Seilzug Kabel
Gewende getriebe	hydraulic Volvo MS4A
Bugschraube	elektrisch 2 x 24 Volt Vetus TF12, 3 kW, each with a 3 bladed propeller
Exhaust	wassergekühlt
Wellen Drucklager	Renewed in 2014
Propeller Typ	fest Renewed in 2014
Propellerblätter	3
Material Propellerwelle	Edelstahl 40 mm - outer shaft bearing (2018) & 24 Volt alternator (2019)
Propellerwelle schmierung	Fett New in 2022 : Volvo Penta inner shaft bearing
Hand Bilgenpumpe	ja
Elektrische Bilgenpumpe	New in 2023
Bilge Alarm	ja
Elektrische Anlage	12 & 24 & 220 Volt
Generator	leise Separator New in 2021 : Mastervolt Whisper 8000 - 6,4 kVA
Betriebstunden Generator	72
Starterbatterie	1 x Optima Red Top 55 Ah (2015)
Versorgungsbatterie	72 x LiFePo4 3,2 V 45 Ah = 24 Volt 405 Ah Lithium (2015)
Generatorbatterie	1 x Optima Red Top 55 Ah (2019)
Bugschraubebatterie	2 x Optima Yellow Top 55 Ah (2015)



HALLBERG RASSY 49 KETCH

Batterie Monitor	Several Battery Monitors
Batterie Ladegerat	2 x Victron Skylla TG 24V/50A
Umwandler	Victron Phoenix : 1x 24V/3000W (2014) & 1x 24V/800W & 1x 500W
Wind generator	Electric Energy D400 24 Volt (in the mizzen mast - 2011)
Solar panele	2 x 100 W & 1 x 200 Watt Solar panel installed (in 2015) on a stainless steel bracket on the stern. Two solar panels are hinged on gas springs, making them foldable up and down. In 2023 equipped with a new intelligent Fox-50 Solar Charge Regulator & a Cepever MPPT Solar Charge Controller.
Dioden-Batterie-Koppler	ja
Landstrom	mit Kabel
Trenn transformator	Electronic isolation transformer with display (2008)
Wasserbereiter	220 Volt. Refitted in 2015. Completely preserved in 2016, not used since. Functioning unknown, so needs to be checked
Weitere Info	Mastervolt AC-Power Analyzer ACM-I
Weitere Info	Several 12V, USB, 24V & 220V sockets throughout the boat
Weitere Info	Double diesel filter with waterseparator. Second alternator (24

NAVIGATION

Kompass	Sestrel 5 on the pedestal
Elektrisches Kompass	2 x Autohelm ST50 Compass
Tiefenanzeige	2 x Autohelm ST50 Depth
Logge	Autohelm ST50 Speed
Windlupe anzeige	Autohelm ST50 Wind + VMG
Tochter anzeige	2 x Autohelm ST50 Multi (at card table & in cockpit)
UKW	2x Icom IC-M421 with Mic (in the cockpit & at the card table) & 2x Shipmate cockpit speaker
Portabel UKW	Icom IC-M33
Autopilot	1 x 24 Volt Whitlock connected to the chain under the pedestal (in the engine room) & 1 x Whitlock connected directly on the quadrant. Both systems are equipped with their own Autohelm ST7000 control panel (at the chart table). Since these systems cannot be used simultaneously, there is a selector switch at the chart table, after which the activated system also can be operated from the cockpit via the Raymarine ST6002 Display (mounted on the pedestal in 2019). As back-up is an Autohelm ST4000 present, which can be mounted on the steering wheel



HALLBERG RASSY 49 KETCH

Ruderwinkel Anzeige	Via the Raymarine ST6002 display
Radar	Simrad 4G radar dome antenna (installed in mizzen mast)
GPS	1 x Furuno GP 52 & 2 x Autohelm ST50 GPS
Radar/GPS/Plotter	B&G Z8 Screen at chart table, connected to Simrad 4G radardome
Wetter Empfänger	Furuno D Fax weather Navtex receiver
Navtex	Furuno Navtex NX-300
PC Computer	Laptop with navigation program
PC Anschluss	ja
WIFI Antenne	(2013) In mizzen mast, with switch, router, Smartlink and cables
AIS Transceiver	advanSea Class B AIS Transceiver TR200 (2013)
Epirb	1x EPIRB 1 Ocean Signal
Kamera	PTZ Camera system in the mizzen mast
Navigation Beleuchtung	LED; 3-Colour, anchor, steaming, deck, bow, stern & cockpit
Suchscheinwerfer	ja
Weitere Info	2 x Reading light in the cockpit & 1 x at the chart table
Weitere Info	Sailor T&T Inmarsat Mini M phone (not in use). Furuno Lightning Protector. Prosser Weathertrend Digital Barometer

AUSRÜSTUNG

Feste Haube	Headroom : 1,66 m - Teak on the roof
Kuchenbude	2 x Dark grey (1x high & 1x low, both with windows)
Sonnenschirm	Over the cockpit (2012)
Winterplane	1x Wintercover & 1x Summercover (both over entire deck)
Cockpit Polster	Loose cushions
Cockpit Tisch	Varnished teak with folding side panels and light
Badeplattform	Custom Made in stainless steel with teak, mounted on the stern
Badeleiter	Edelstahl
Bugtreppe	Loose aluminium ladder
Gangway	1 x Custom Made gangway (aluminium & stainless steel) & 1 x wood
Heckdusche	With hot & cold pressured fresh water
Anker	Rocna 45 KG (2015)



HALLBERG RASSY 49 KETCH

Ankerkette	100 m Heavily galvanized & approved chain (new in 2023)
Anker 2	Bruce (80 lb) & Fisherman (54 lb). Anchor line & some meter chain
Ankerwinde	elektrisch Lofrans with deck buttons & a wired remote control
Gangspill	On the windlass
Deckwasche	Pump renewed in 2017
Ausserborder Halterung	On the pushpit
Davits	Edelstahl
Davits bedienung	handbetrieb
See Reling	Draht/Seil Double wired
Zupackenschiene (aufbauten)	Teak
Seiten-Einstieg Seereling	Amidships on both sides & Portside on bow
Heckkorb	Stainless steel with a folding teak seat on SB
Bugkorb	Stainless steel
Rettungsinsel	Container Viking (2016), mounted on deck in front of the fixed hard top
Rettungsinsel (Pers)	6
Letzte Wartung Rettungsinsel	Never surveyed, so needs to be surveyed
Schwimvesten	2 x
Rettungsboje	1 x White horse shoe rescue buoy & 1 x Rescue Sling
Markierboje	1 x
Sicherheitsleine auf Deck	ja
Scheibenwischer	1 x (2007)
Horn	Loose horn
Radar Reflektor	Trilens radar reflector in the mizzen mast
Fenderkissen	ja
Festmacher	ja
Reserve Teilen	Very extensive range of spare parts
Alarmsystem	Connected to a light on the mizzen mast & a light in the cockpit
TV	1x in Aft cabin & 1x Grundig TV in bunk bed cabin
Radio-CD Spieler	Stein radio/CD/DVD/MP4 player
Lautsprecher im Pflicht	2 x Ultra Linear
Lautsprecher im Salon	4 x
Uhr - Barometer	Clock, Barometer, temperature meter, chronometer & Barograph



HALLBERG RASSY 49 KETCH

Feuerloscher	4 x
Weitere Info	Alarm system with notification to mobile phone (reporting points: sliding hatch, engine, bilge, shore power, temperature, gas & smoke detection and life camera image). Fire blanket. Rescue line on a reel on the pushpit. Small Duralock Safe. Bosuns chair
Weitere Info	Red lights installed in the anchor locker in 2018
Weitere Info	Very extensive documentation, manuals and maintenance history available

TAKELWERK

Rig	Ketsch-Kutter
Stehendes Gut	Dyform New in 2023, including covers over tentioners
Marke Mast	Reckmann All wires in both masts renewed in 2008
Material Mast	Aluminium behandelt Both masts&booms white spray painted (Alexseal 2components-2008)
Salings	Main : 2x set of spreaders - Mizzen : 1 x set of spreaders
Großsegel	New in 2022 UK Sails Cruising Offshore Furling mainsail - 43m2
Rollgroß Anlage	Reckmann - Hydraulic
Besan	New 2022 UK Sails Cruising Offshore Furling mizzen sail (manual)
Fock	New 2022 UK Sails Cruising Offshore Furling Cutter Jib - 25,9m2
Genua	New in 2022 UK Sails Cruising Offshore Furling Genoa - 74m2
Rollreffanlage	Reckmann - Hydraulic
Genua-Persenning	New in 2022 : Dark blue Genoa & Cutter Jib cover
Kutter Rollreffanlage	Hood 915 Seafurl - manual with an endless reefing line
Gennaker	Gennaker (2019)
Spi	MPS (2014)
Trysegel	ja
Sturmfock	ja
Reff Vorrichtung	Rollgross im Mast
Baumniederhohler	Gasdruckfeder Selden on mainsail boom & tackle on mizzen boom
Primare Schot Winschen	2 x Meissner 28 ST (main sheet)
Sekundaire Schot Winschen	2 x Meissner 28 ST (Cutter Jib Sheet)
Genua Schotwischen	2 x Lewmar 65 ST



HALLBERG RASSY 49 KETCH

Fall Winschen

Lewmar: Main: 2x43ST+1x46ST (with jammers) & 2x8. Mizzen: 2x16ST

Reff Wunsch

1 x Lewmar 8 (on boom of main mast)

Spi-Baum

Aluminium 2 x Hanging on front side of the main mast

Jockey-Baum

Aluminium 1 x

Weitere Info

Shape Tape & grey UV protection strip on both Genoa & Cutter Jib

Weitere Info

Lewmar mainsheet rails with end-stops. All blocks are in alucarbon. Jack stays with tackle & Lewmar blocks. 6 x Spinlock jammer. Antal mainsheet blocks. Stainless steel granny bars around the main mast. The mast wiring runs through a stainless steel gooseneck to below deck. Stainless steel mast steps on mizzen mast till the spreaders. Stainless steel flag pole on top of the mizzen mast. There are some extra (older) spare sails available. After the furling sails of both masts have been lowered, strips can be hoisted into both mast profiles. This prevents the wind from causing an enormous whistling sound on both masts



HALLBERG RASSY 49 KETCH



HALLBERG RASSY 49 KETCH



HALLBERG RASSY 49 KETCH



HALLBERG RASSY 49 KETCH



HALLBERG RASSY 49 KETCH



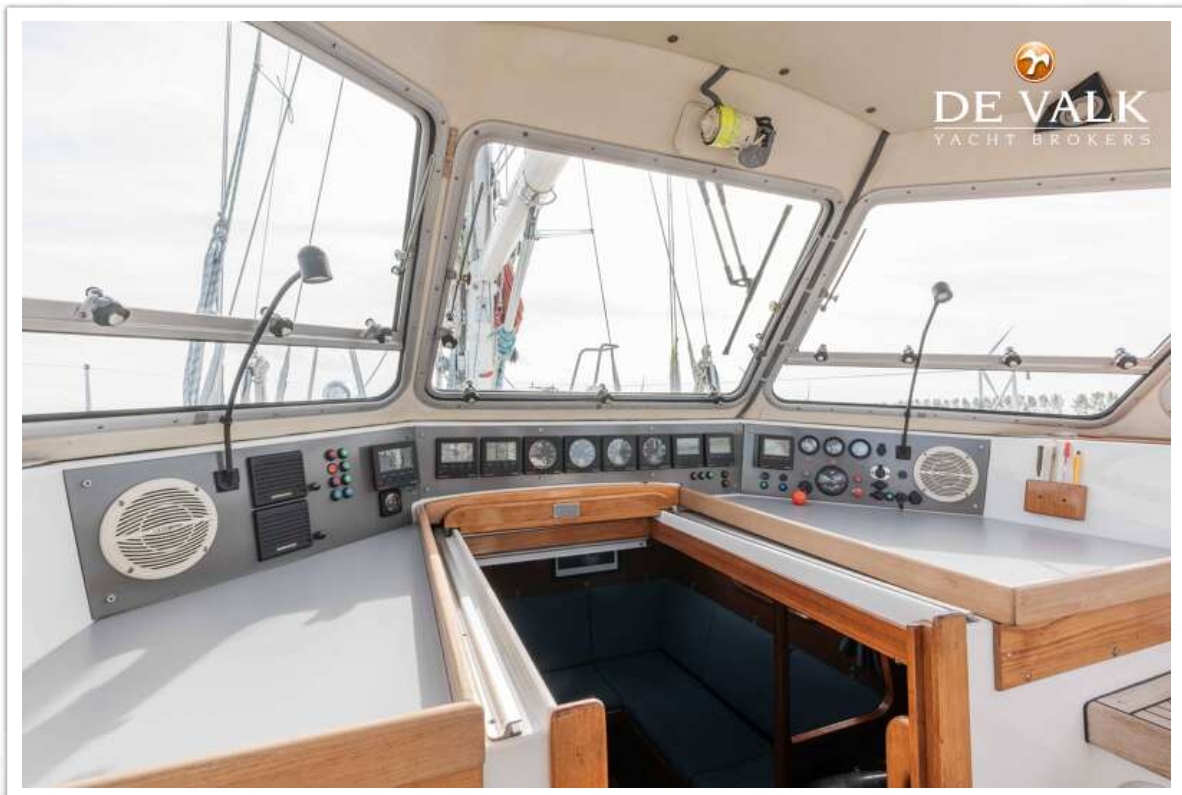
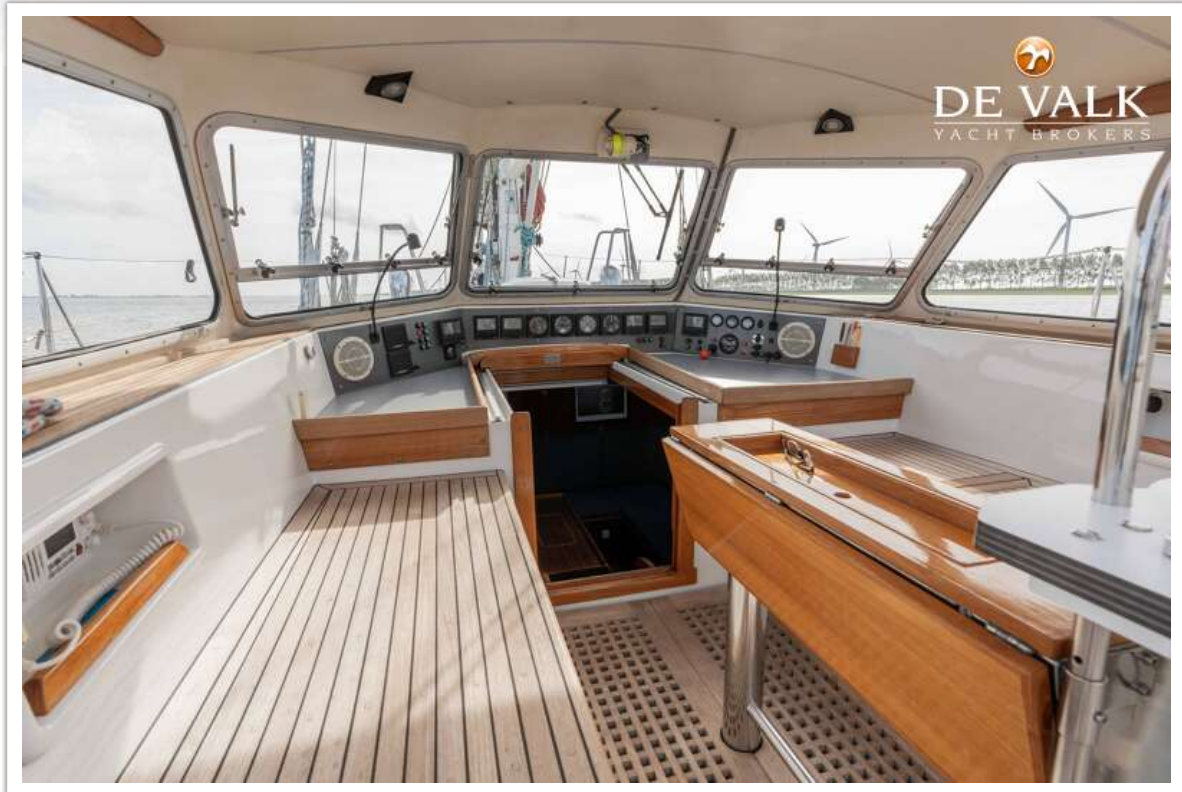
HALLBERG RASSY 49 KETCH



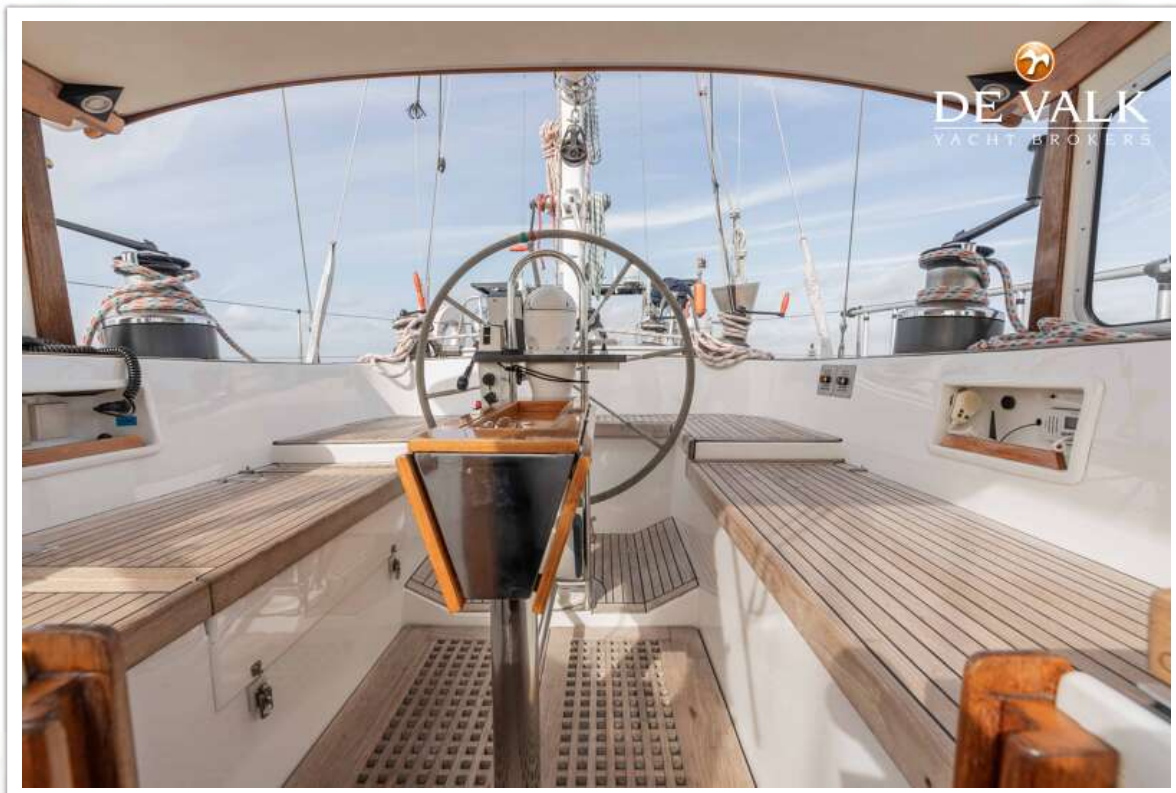
HALLBERG RASSY 49 KETCH



HALLBERG RASSY 49 KETCH



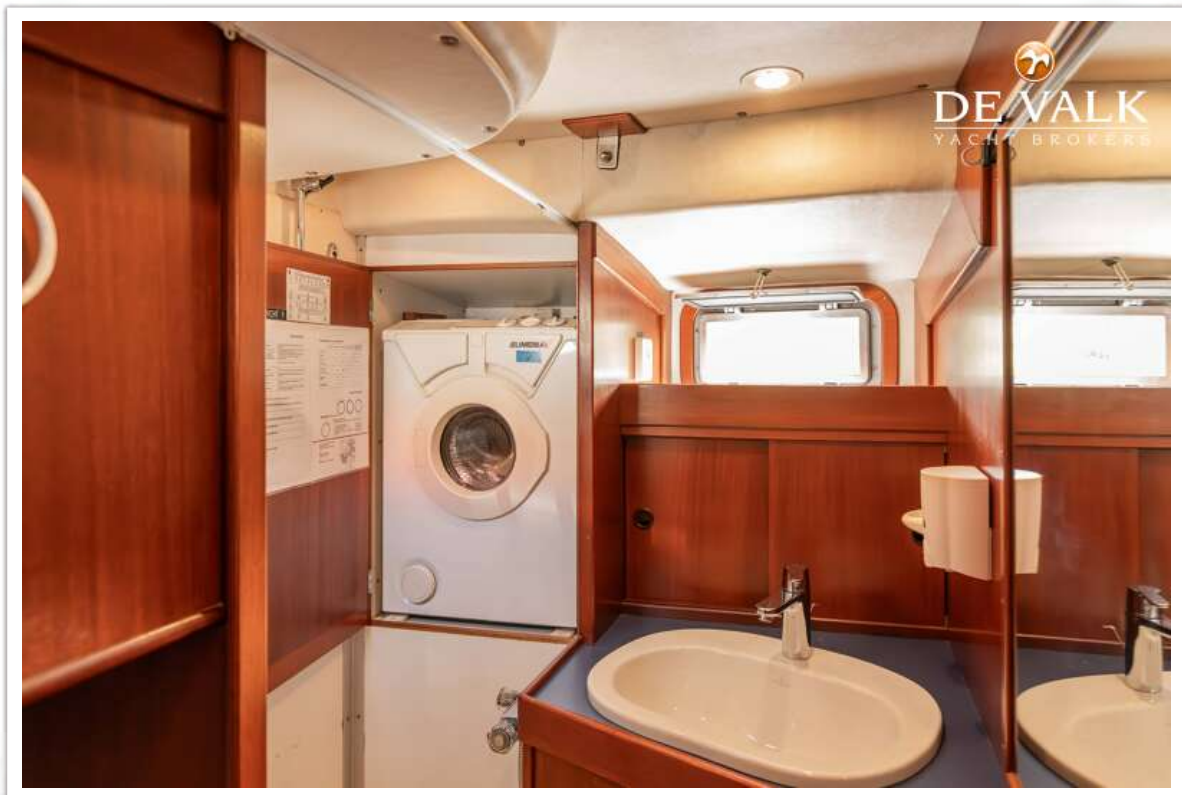
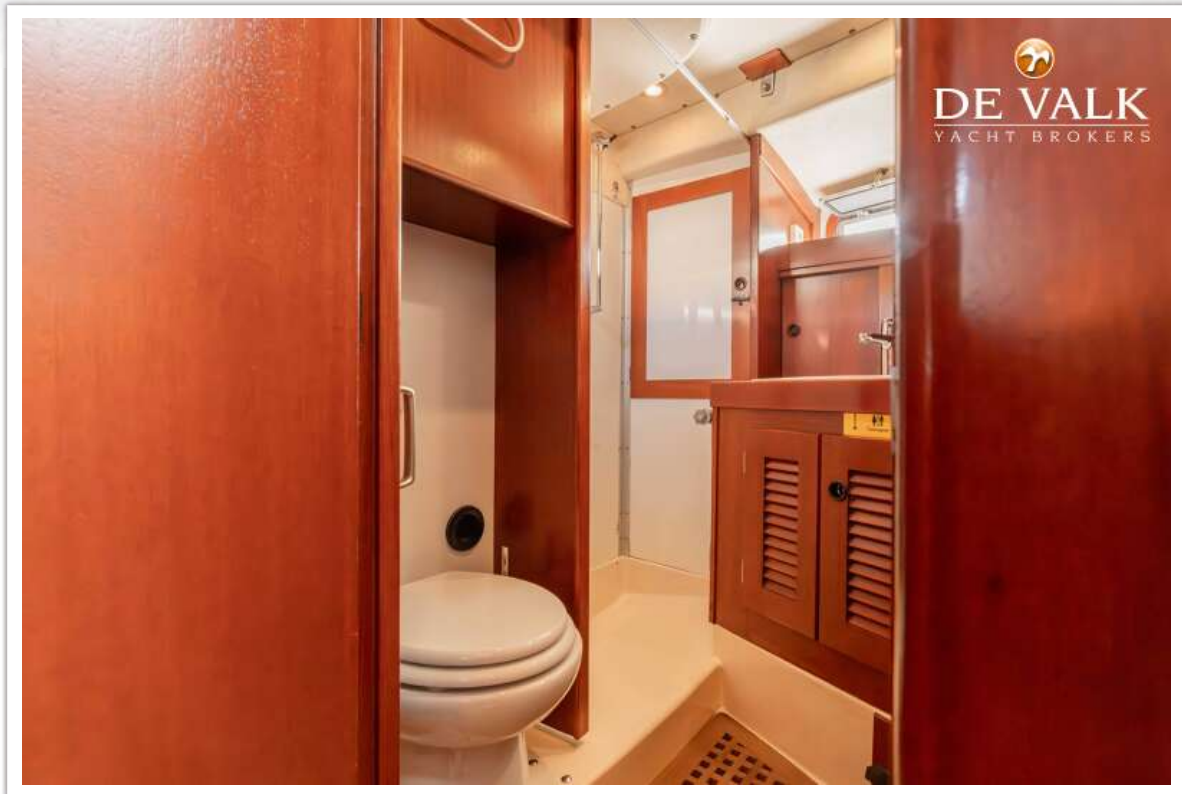
HALLBERG RASSY 49 KETCH



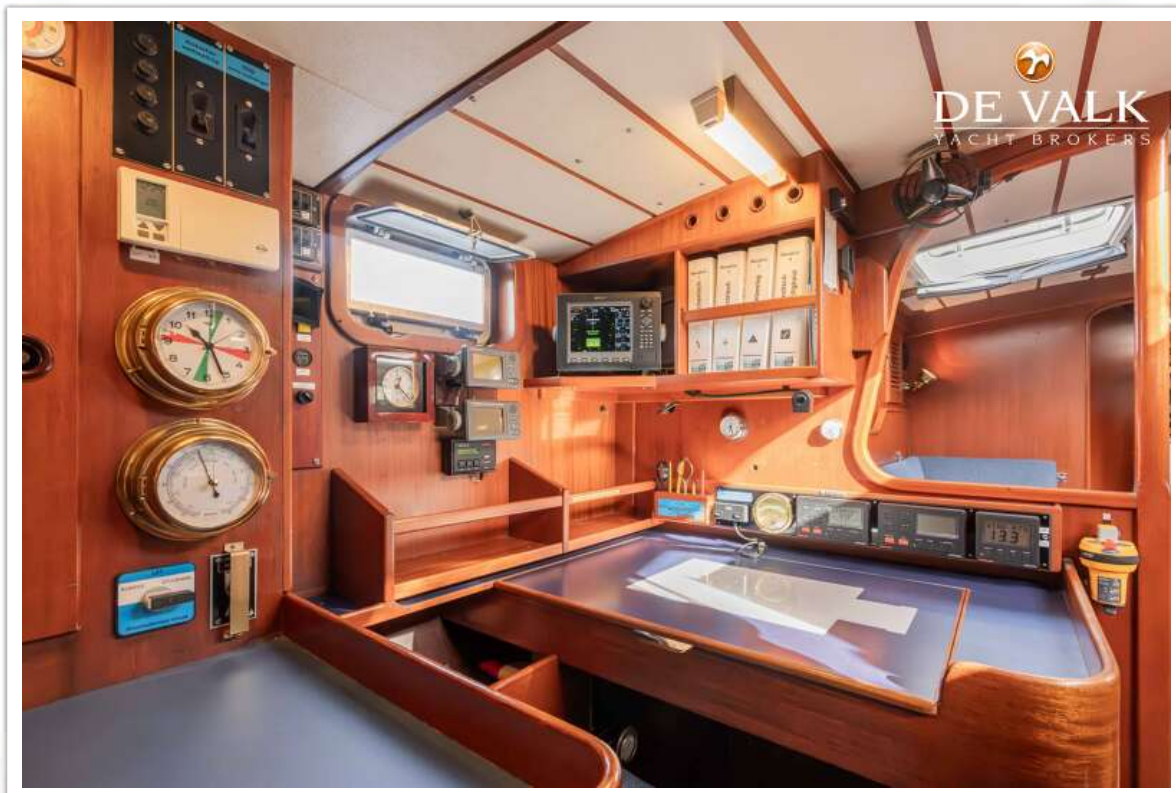
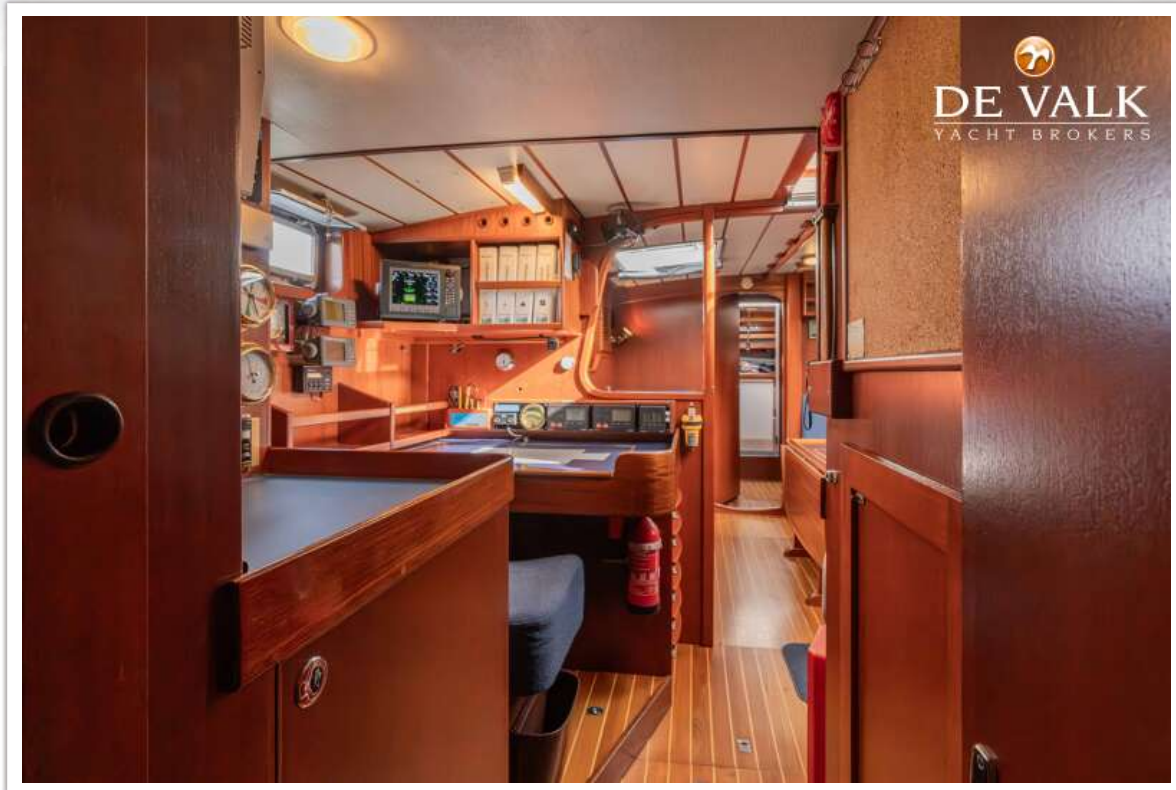
HALLBERG RASSY 49 KETCH



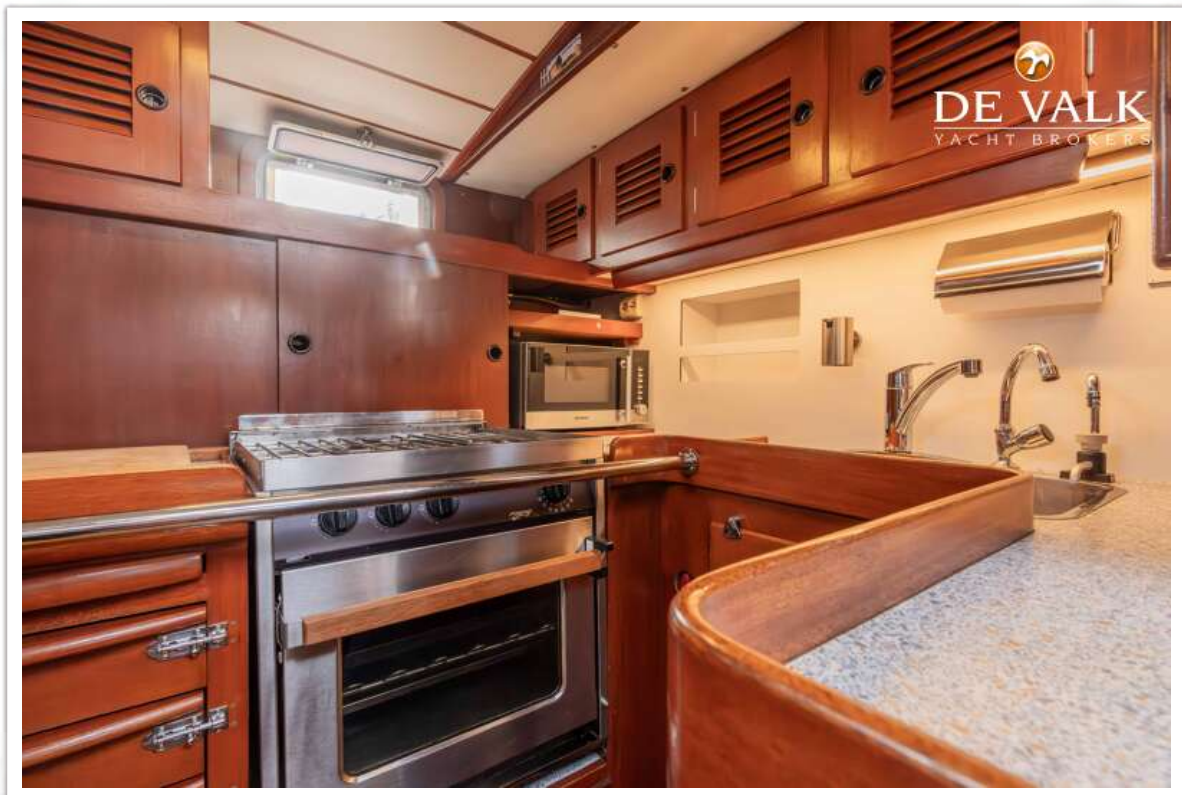
HALLBERG RASSY 49 KETCH



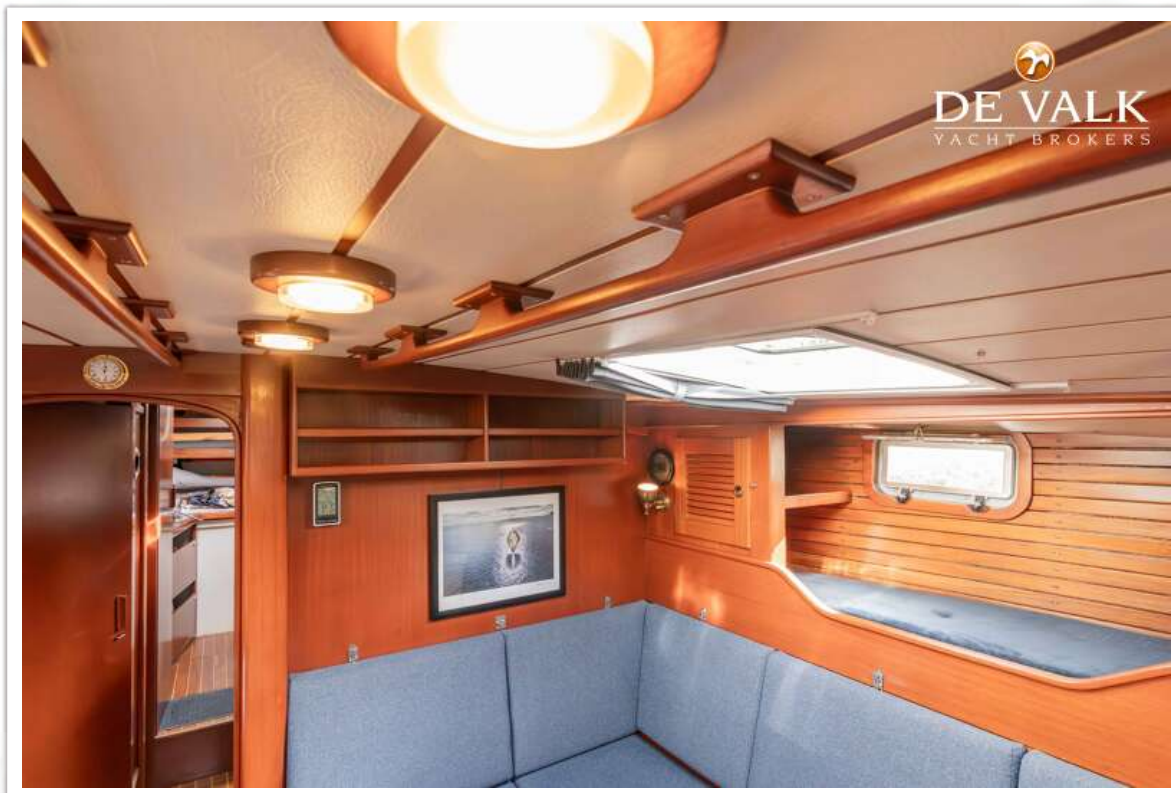
HALLBERG RASSY 49 KETCH



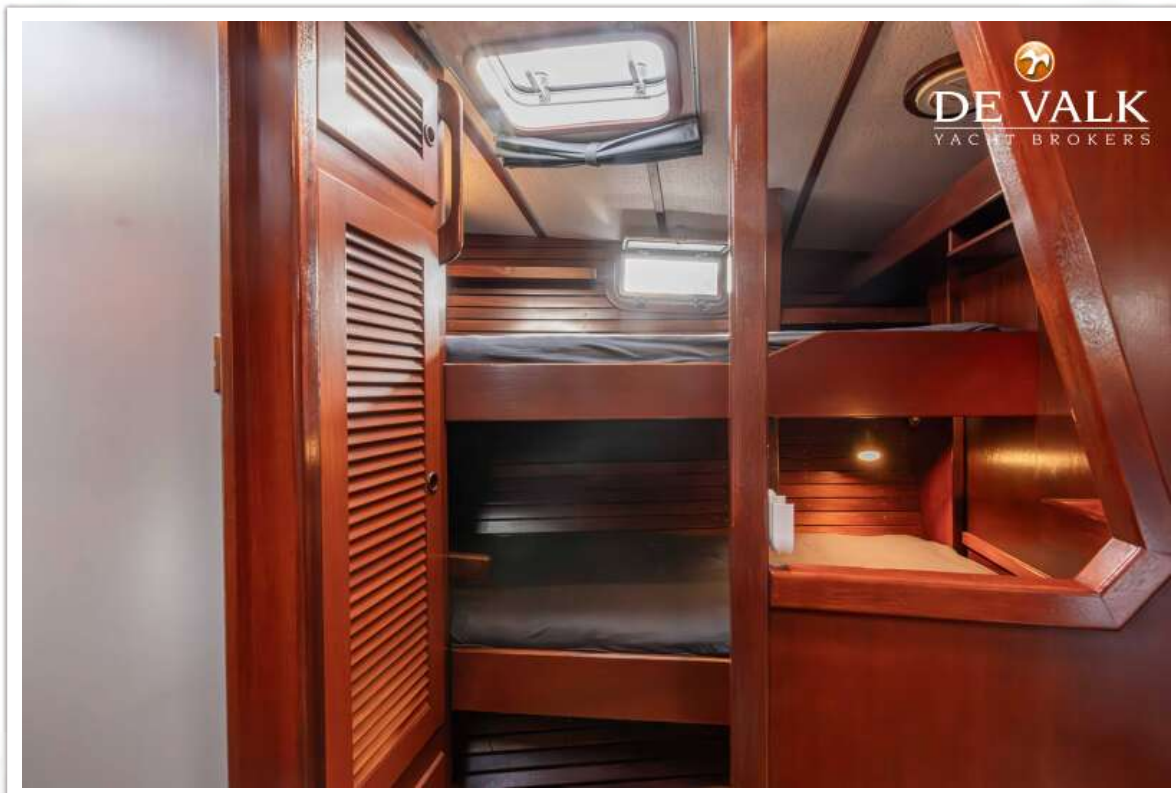
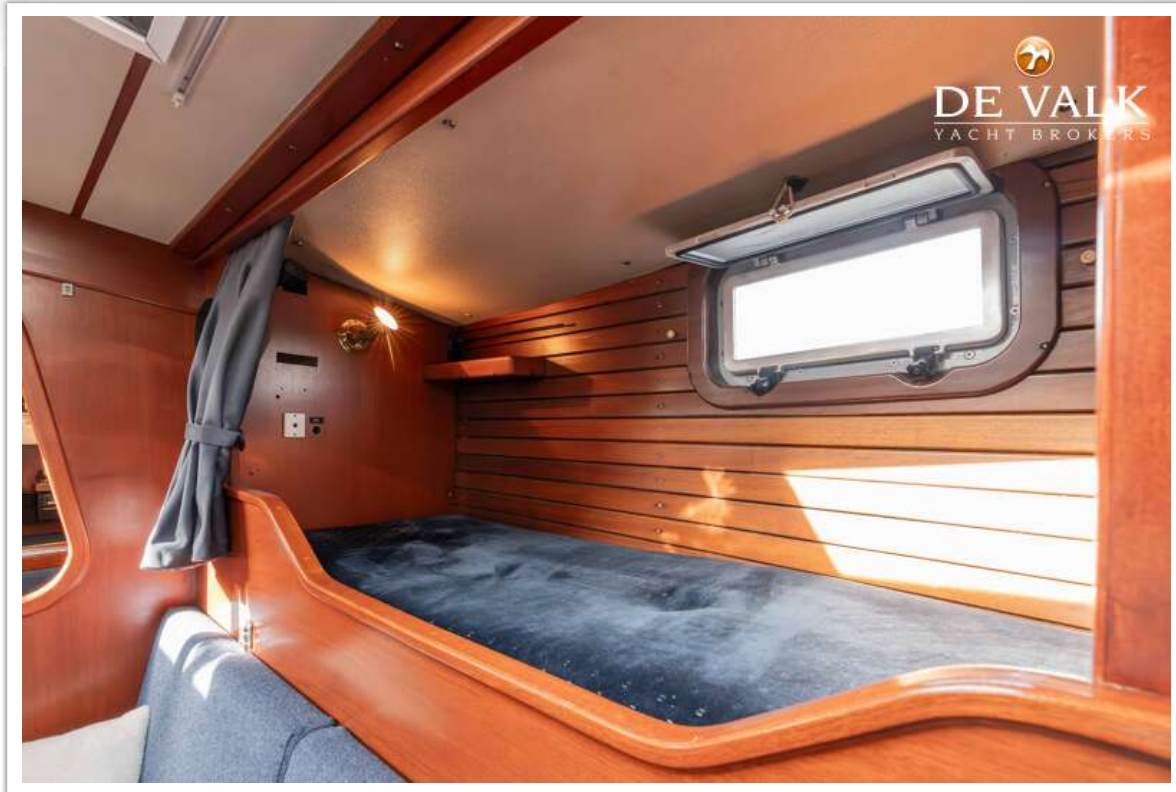
HALLBERG RASSY 49 KETCH



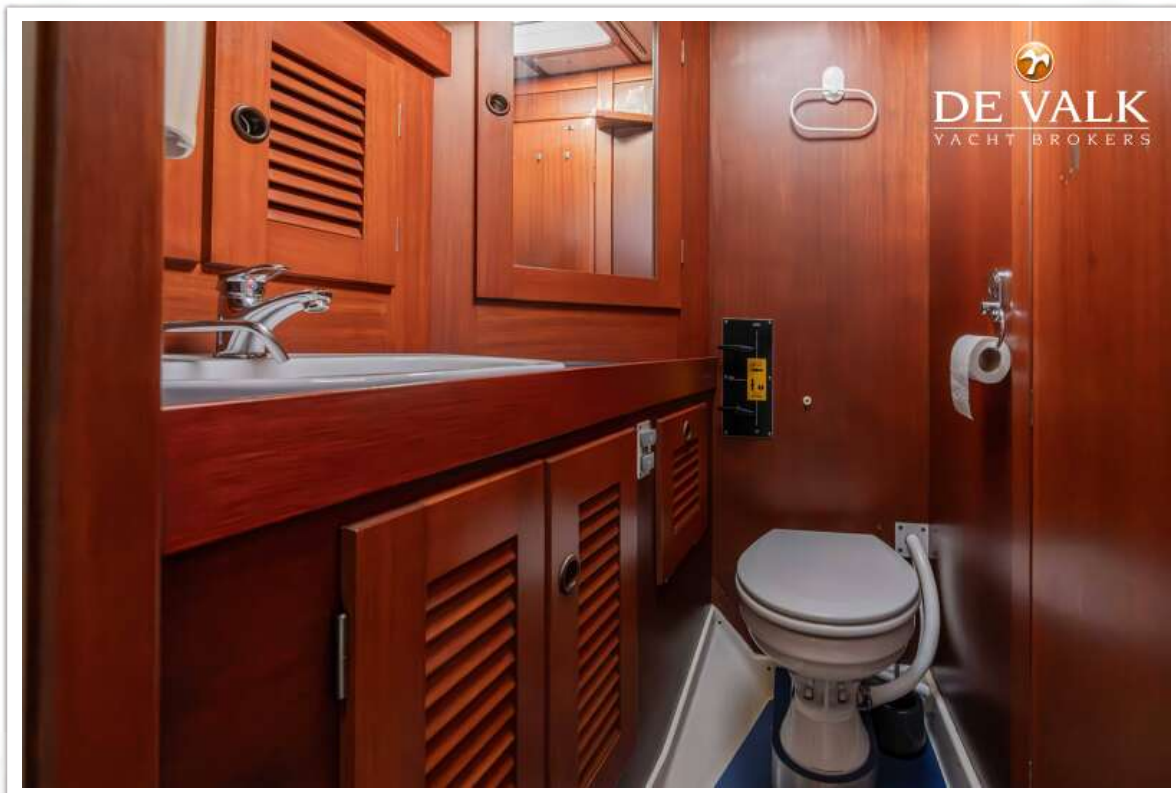
HALLBERG RASSY 49 KETCH



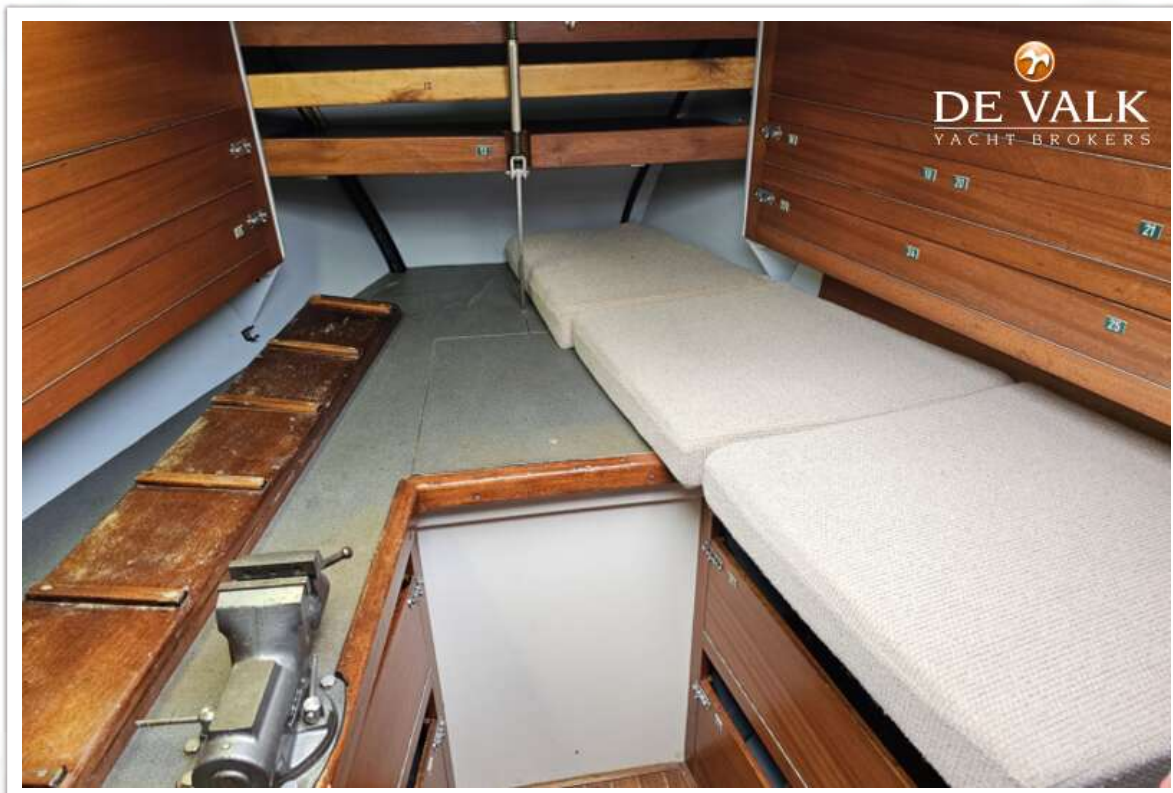
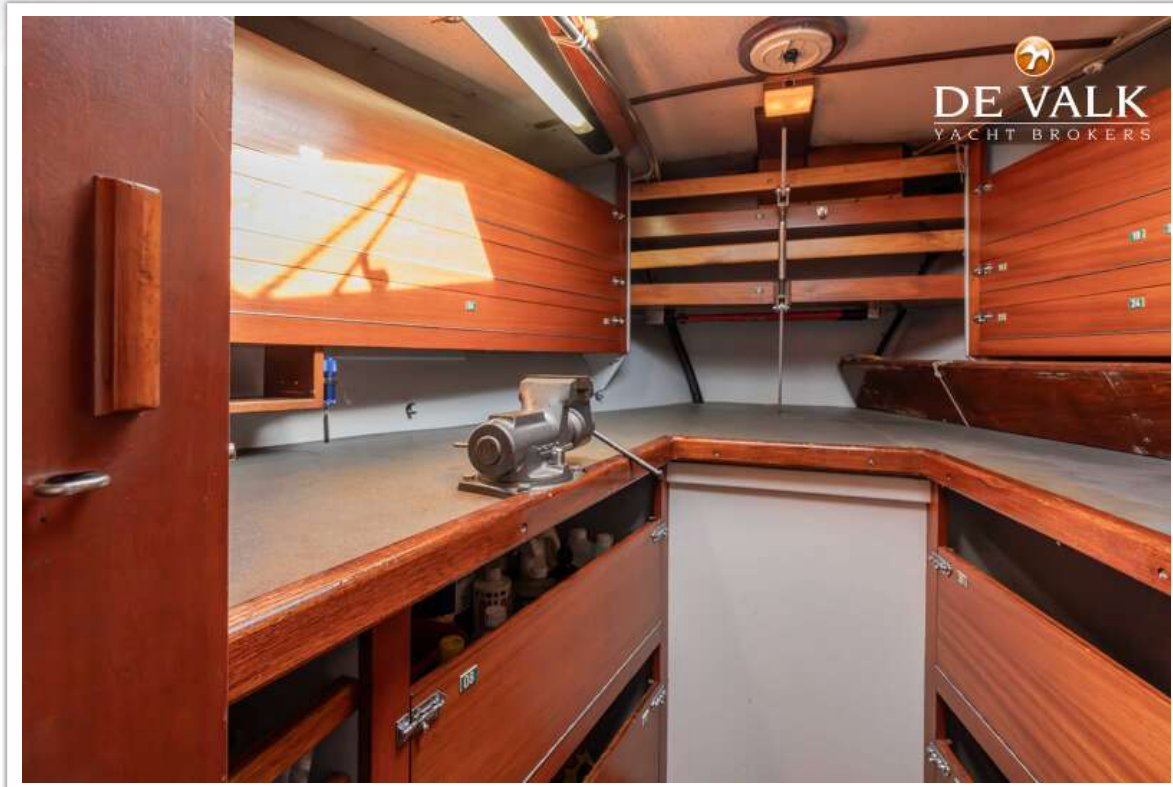
HALLBERG RASSY 49 KETCH



HALLBERG RASSY 49 KETCH



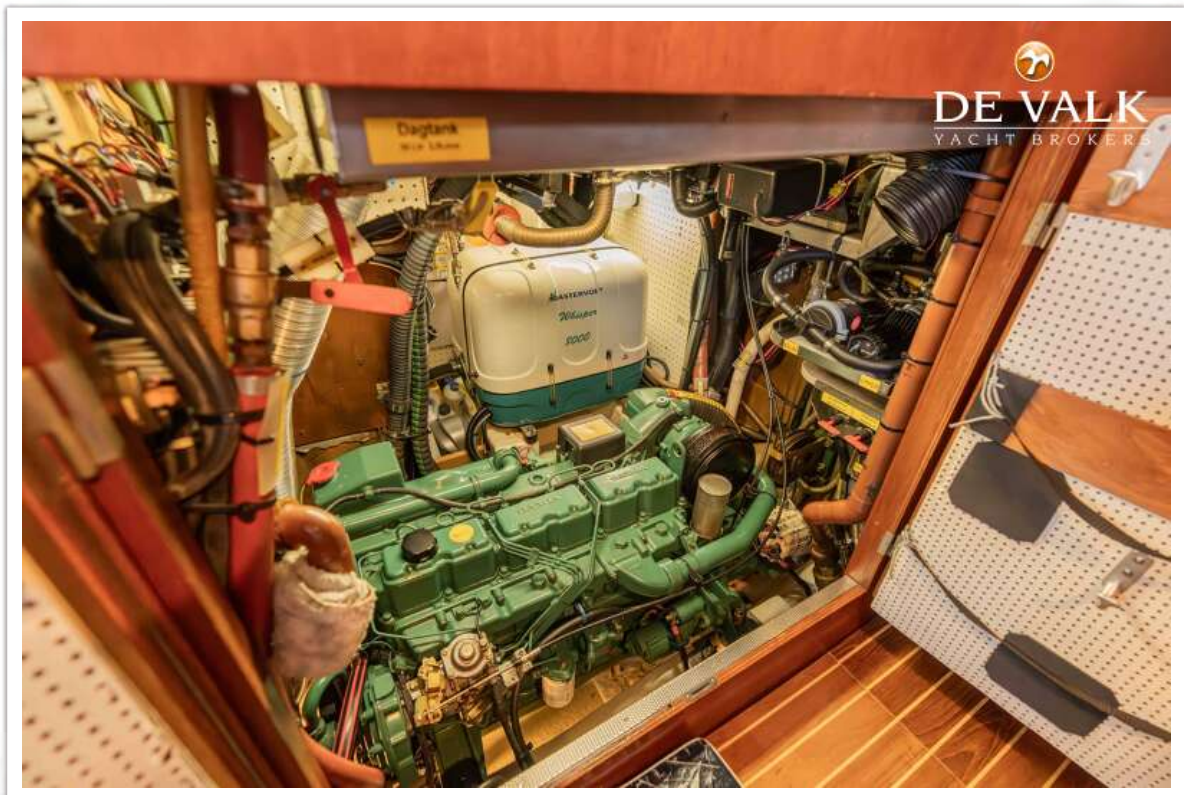
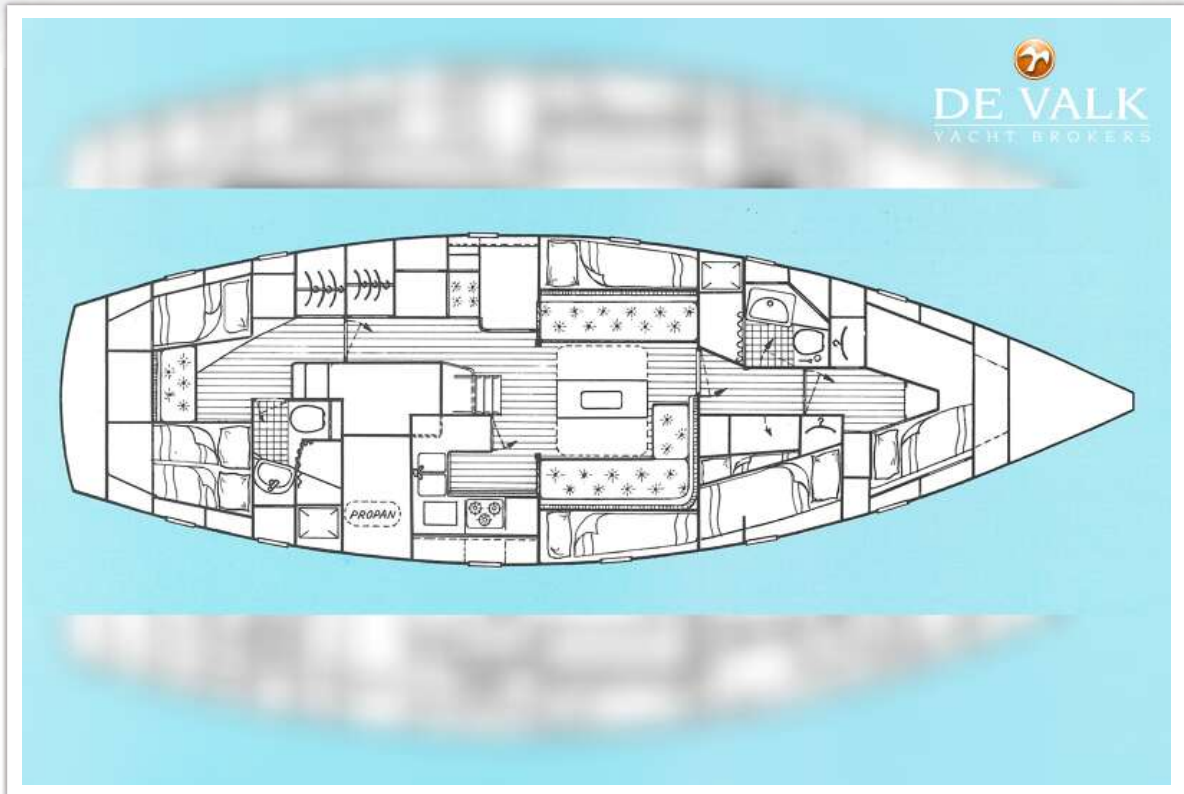
HALLBERG RASSY 49 KETCH



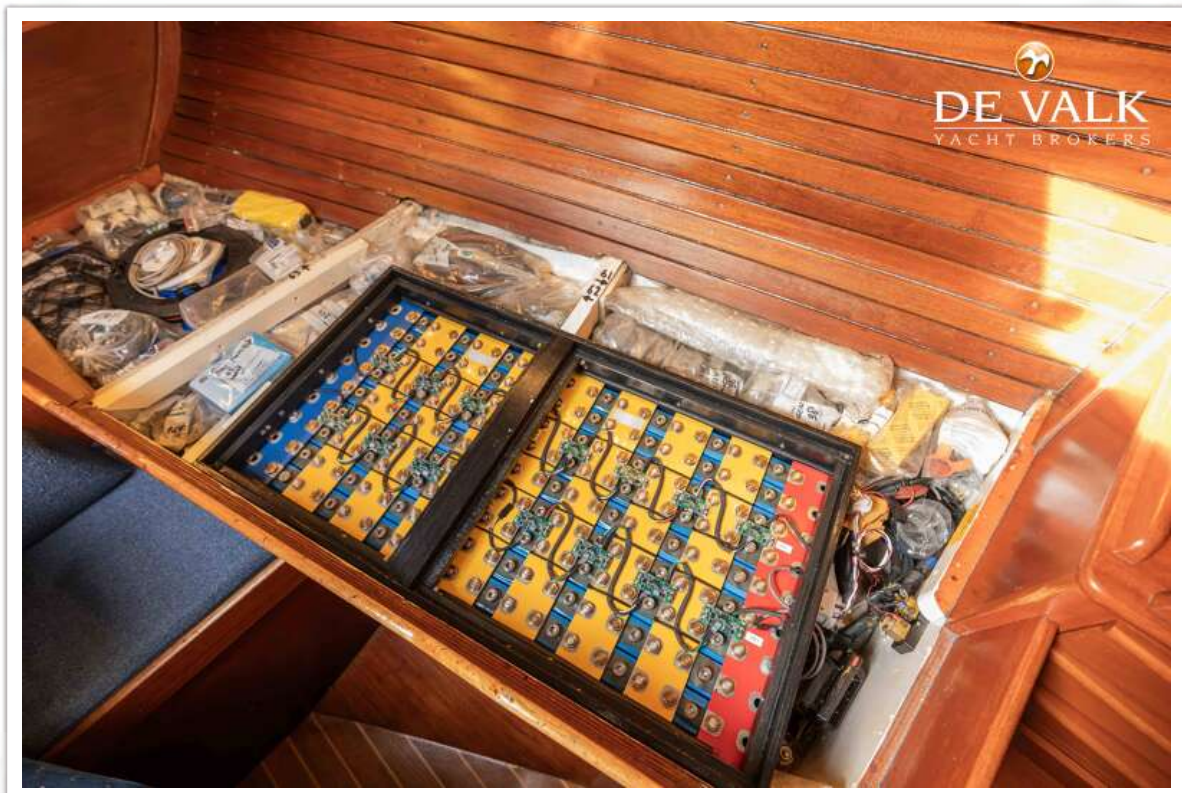
HALLBERG RASSY 49 KETCH



HALLBERG RASSY 49 KETCH



HALLBERG RASSY 49 KETCH



HALLBERG RASSY 49 KETCH

