



DE VALK  
YACHT BROKERS



RO/PAX DOUBLE ENDED FERRY 78 M



DE VALK  
YACHT BROKERS

# RO/PAX DOUBLE ENDED FERRY 78 M

## KOMMENTARE DES MAKLERS

Open type Double ended RO/PAX FERRY INSB CLASS that was built in a Perama Shipyard in Greece in 2018. Ferry equipped with a VETH X 4 rudder prop system VZ-400.

*Sofia Iliia-Salvanou*

## TECHNISCHE DATEN

<b>Maße</b>	78.60 x 16.50 x 0.00 (m)	<b>Werft</b>	
<b>Baujahr</b>	2018	<b>Kabinen</b>	2
<b>Material</b>	Stahl	<b>Kojen</b>	
<b>Motor(en)</b>	4 x CATERPILLAR C18 diesel	<b>PS/kW</b>	4 x 600.00 (PS), 441.60 (kW)
<b>Angebotspreis</b>	€ 5.800.000 (MwSt. Nicht bezahlt)	<b>Liegeplatz</b>	elsewhere / nicht im Verkaufsbüro

## KONTAKT

<b>Verkaufsbüro</b>	De Valk Corfu	<b>Telefon</b>	(+30) 6948681503
<b>Adresse</b>	New Port of Corfu, near Gouvia Marina 490 83 Corfu GR	<b>E-Mail</b>	corfu@devalk.nl

## HAFTUNGSAUSSCHLUSS

Diese Angaben erfolgen nach bestem Wissen, können jedoch nicht garantiert werden.



# RO/PAX DOUBLE ENDED FERRY 78 M

## ALLGEMEIN

<b>Modell</b>	RO/PAX DOUBLE ENDED FERRY 78 M
<b>Typ</b>	Motoryacht
<b>Rumpflänge (m)</b>	78,60
<b>Breite (m)</b>	16,50
<b>Baujahr</b>	2018
<b>Land</b>	Griechenland
<b>Brutto tonnage</b>	1.500
<b>Rumpfmateral</b>	Stahl
<b>Rumpffarbe</b>	Gelb
<b>Material Aufbauten</b>	Stahl
<b>Deckmaterial</b>	Stahl
<b>Deck Finish</b>	Antirutsch Farbe
<b>Deck Finish Aufbauten</b>	Antirutsch Farbe
<b>Fenster Material</b>	Standard Glas
<b>Treibstofftank (Liter)</b>	ja
<b>Trinkwassertank (Liter)</b>	ja
<b>Fäkaelien Tank (Liter)</b>	ja
<b>Grauwassertank (Liter)</b>	ja
<b>Radsteuerung</b>	ja
<b>Weitere Info</b>	INSB CLASS
<b>Weitere Info</b>	308 passengers and 90 cars or 16 Trucks of 12m
<b>Weitere Info</b>	GARAGE HEADROOM 5,18m

## UNTERKUNFT

<b>Kabinen</b>	2
<b>Klima Anlage</b>	ja
<b>Weitere Info</b>	ELEVATOR FOR PASSENGERS

## MASCHINEN



# RO/PAX DOUBLE ENDED FERRY 78 M

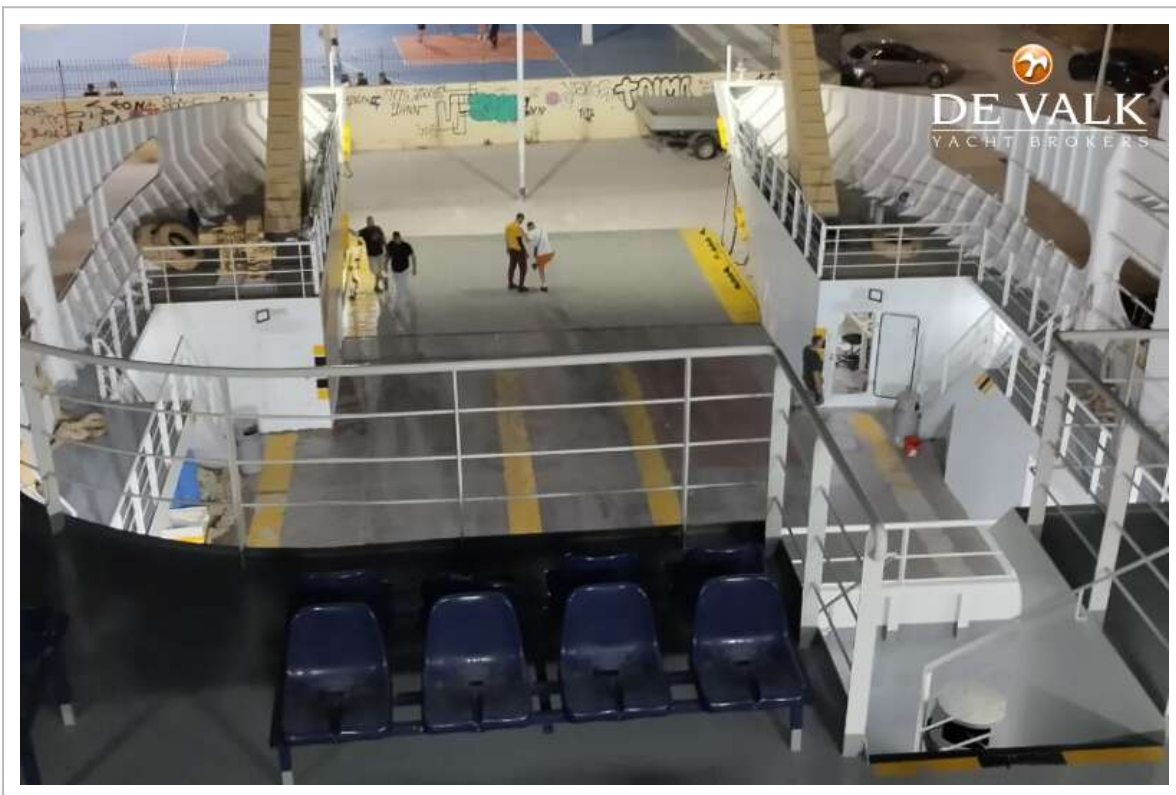
Motoranzahl	4
Marke	CATERPILLAR
Typ	C18
PS	600
kW	441.60
Kraftstoffart	Diesel
Installiert im Jahr	2018
Höchstgeschwindigkeit (Kn)	13,5
Marschgeschwindigkeit (Kn)	12
Propeller Typ	fest X4 VETH RUDDER PROP SYSTEM VZ-400
Generator	X 3 CATERPILLAR 110 KVA EACH
Generator 2	X 1 EMERGENCY GENERATOR 80 KVA
Batterien	ja

## NAVIGATION

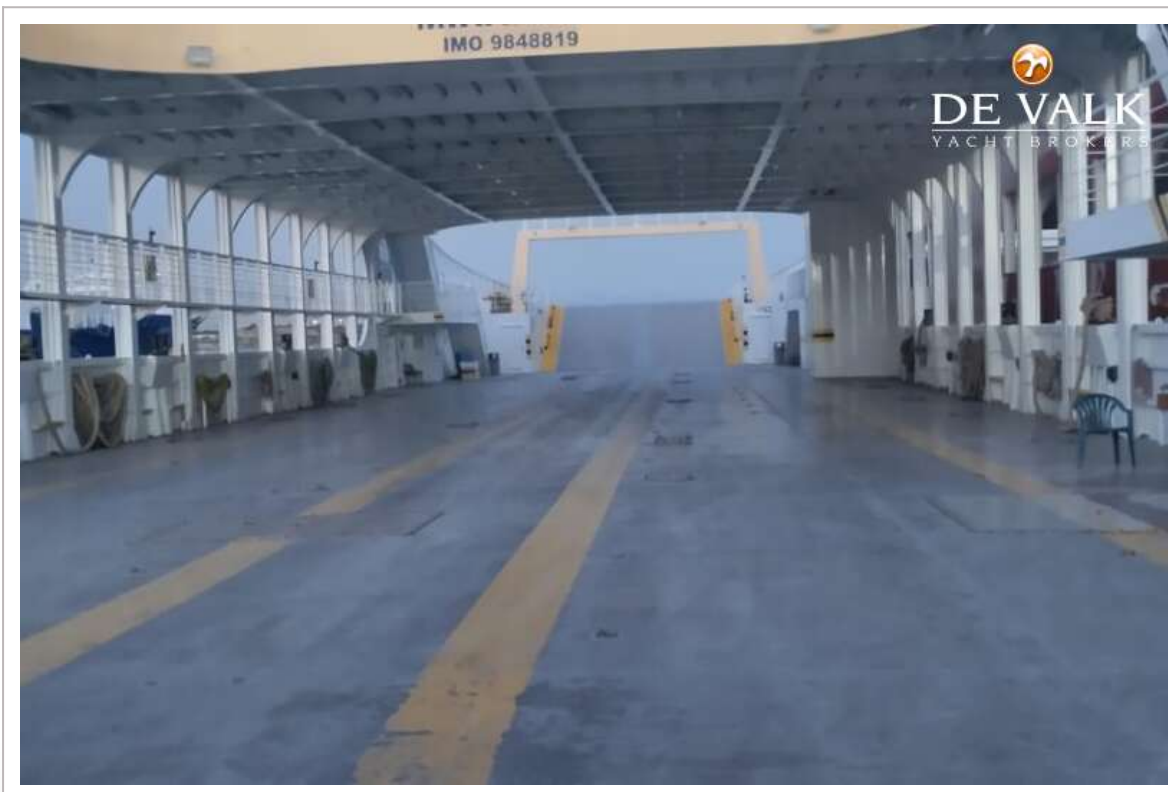
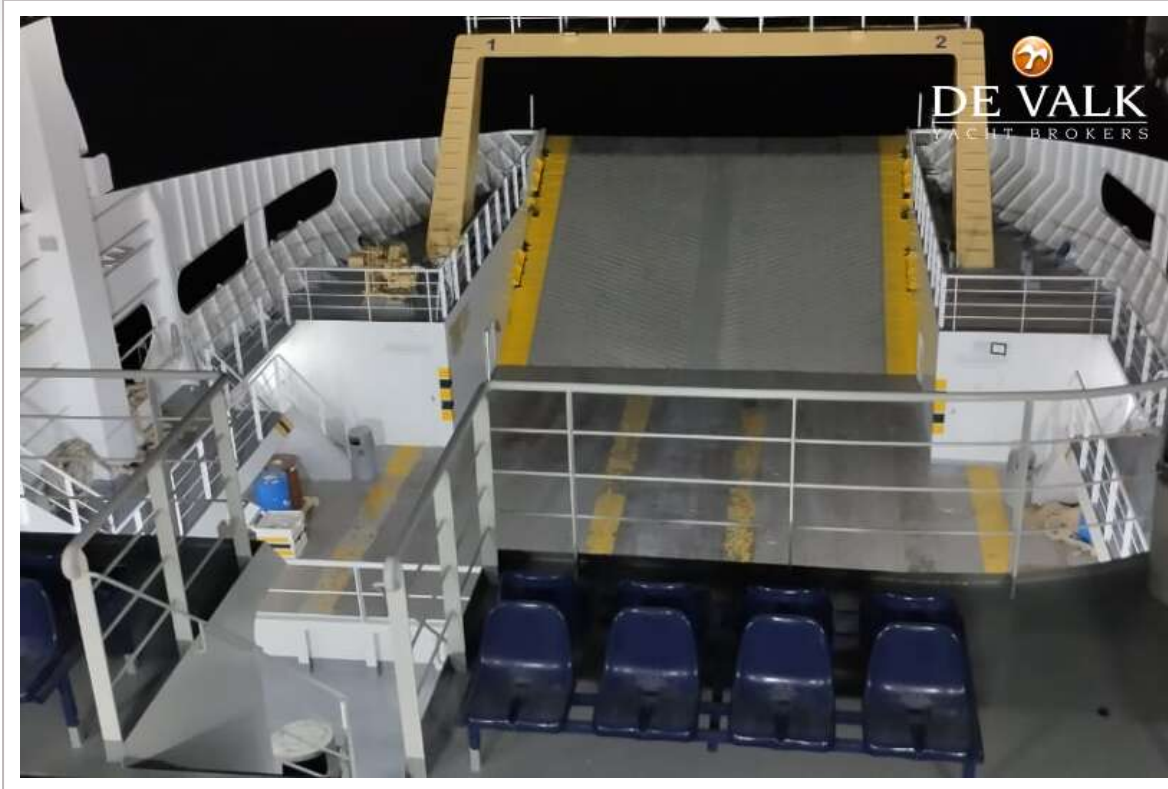
Kompass	ja
Tiefenanziege	ja
UKW	ja
Autopilot	ja
Radar	X 2 ARPA
AIS Empfänger	ja
AIS Transponder	ja
Navigation Beleuchtung	ja
Weitere Info	GYRO



# RO/PAX DOUBLE ENDED FERRY 78 M



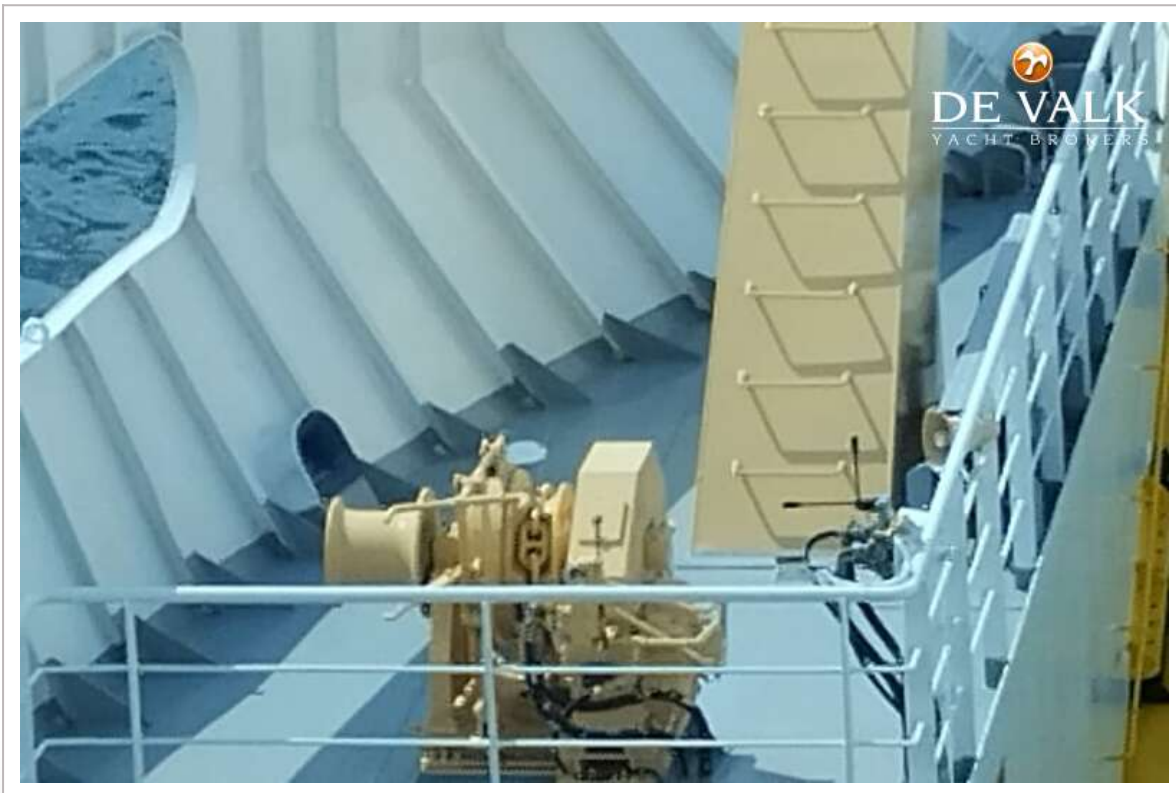
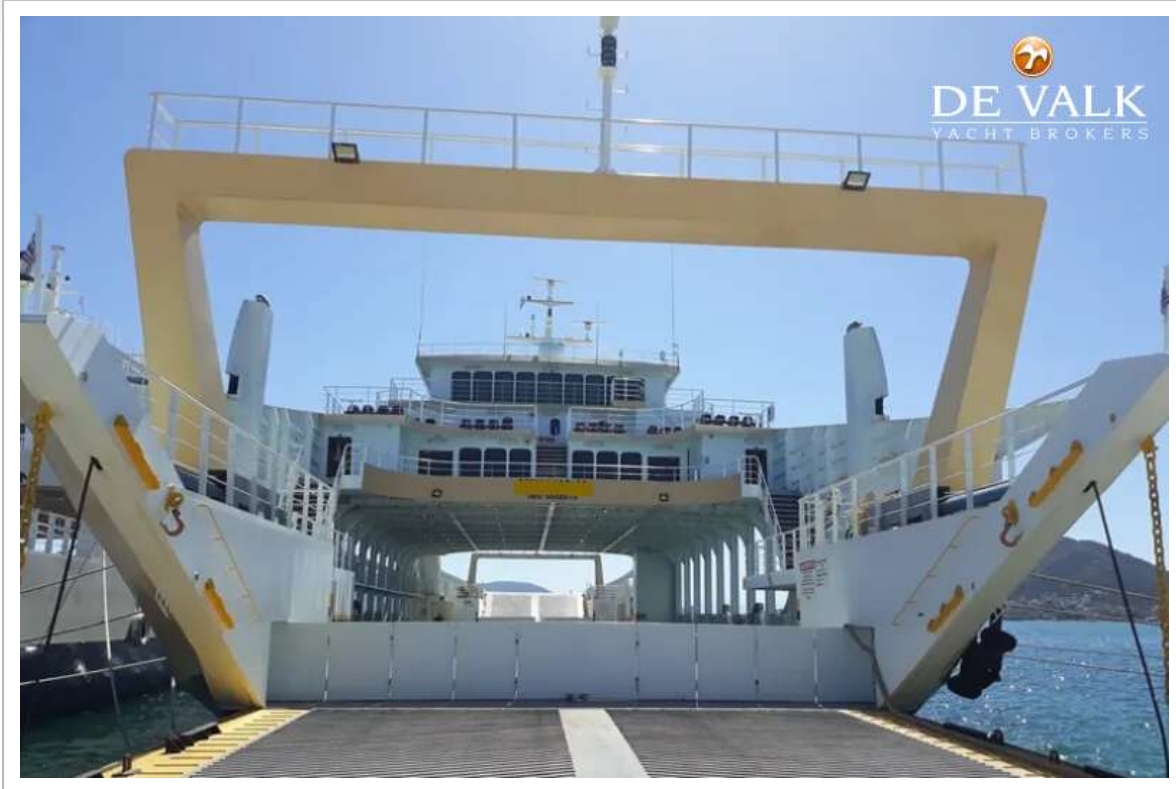
# RO/PAX DOUBLE ENDED FERRY 78 M



# RO/PAX DOUBLE ENDED FERRY 78 M



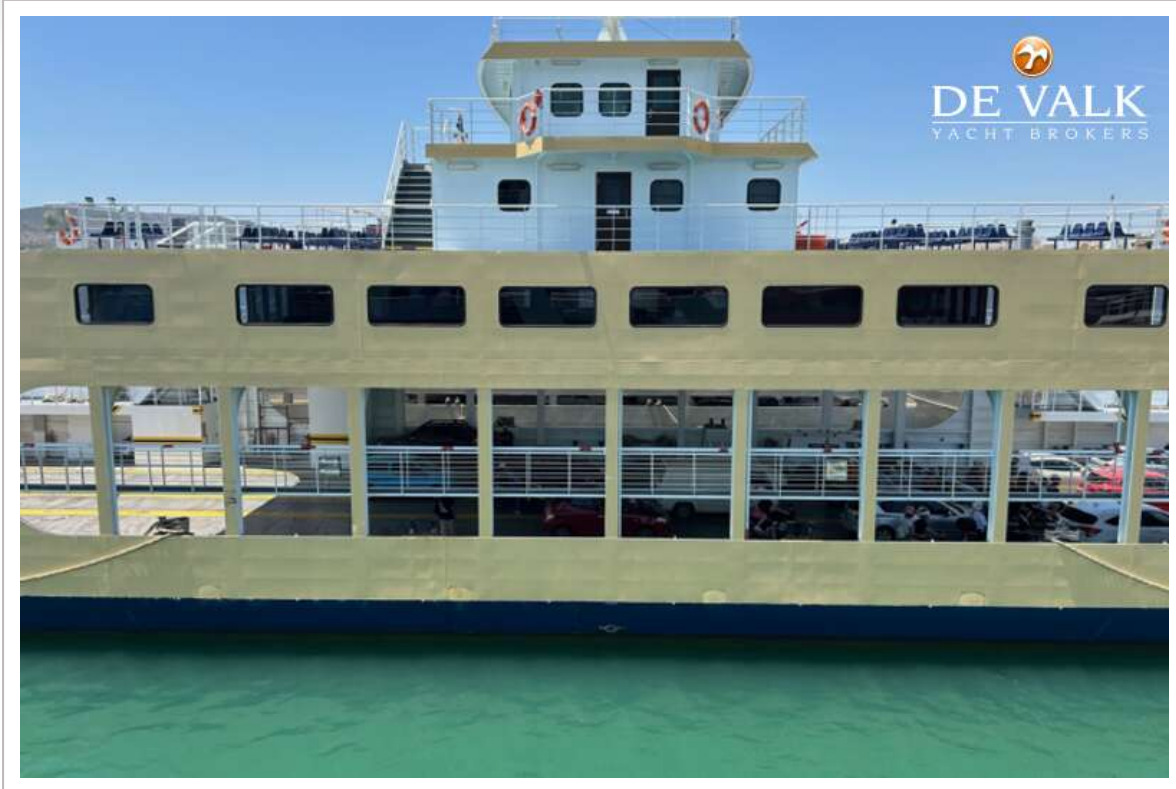
# RO/PAX DOUBLE ENDED FERRY 78 M



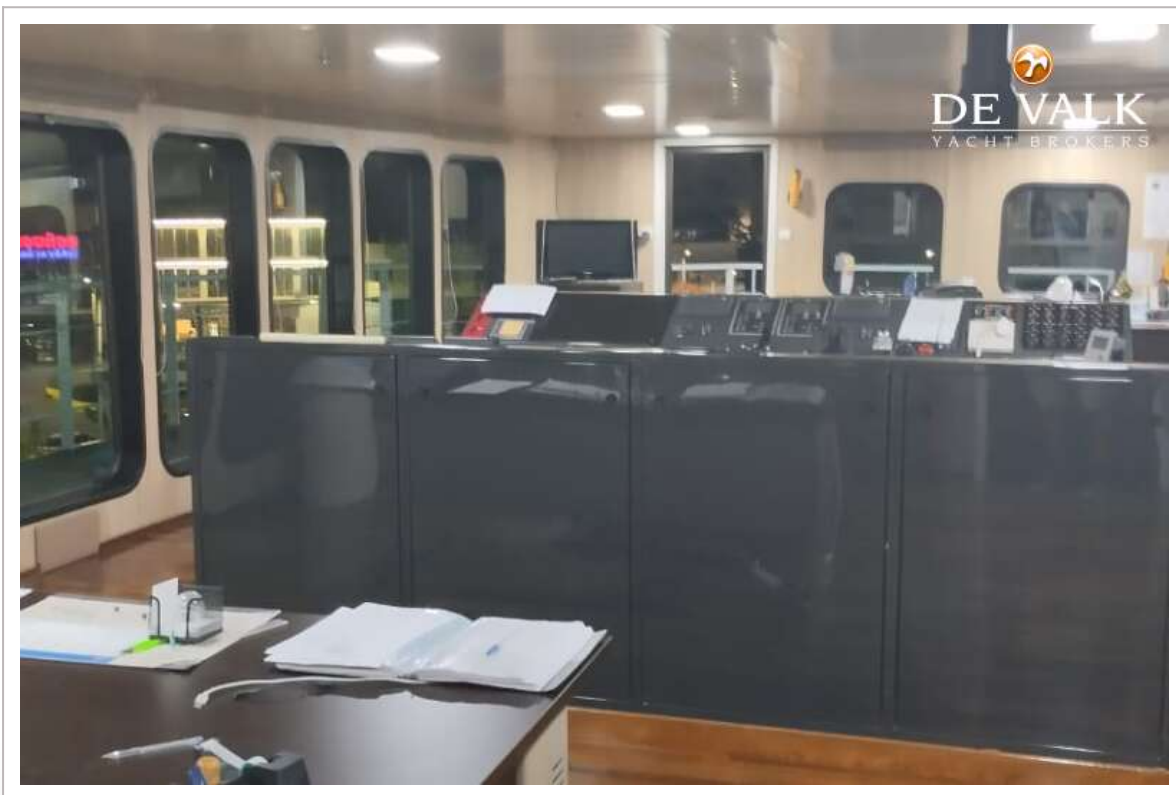
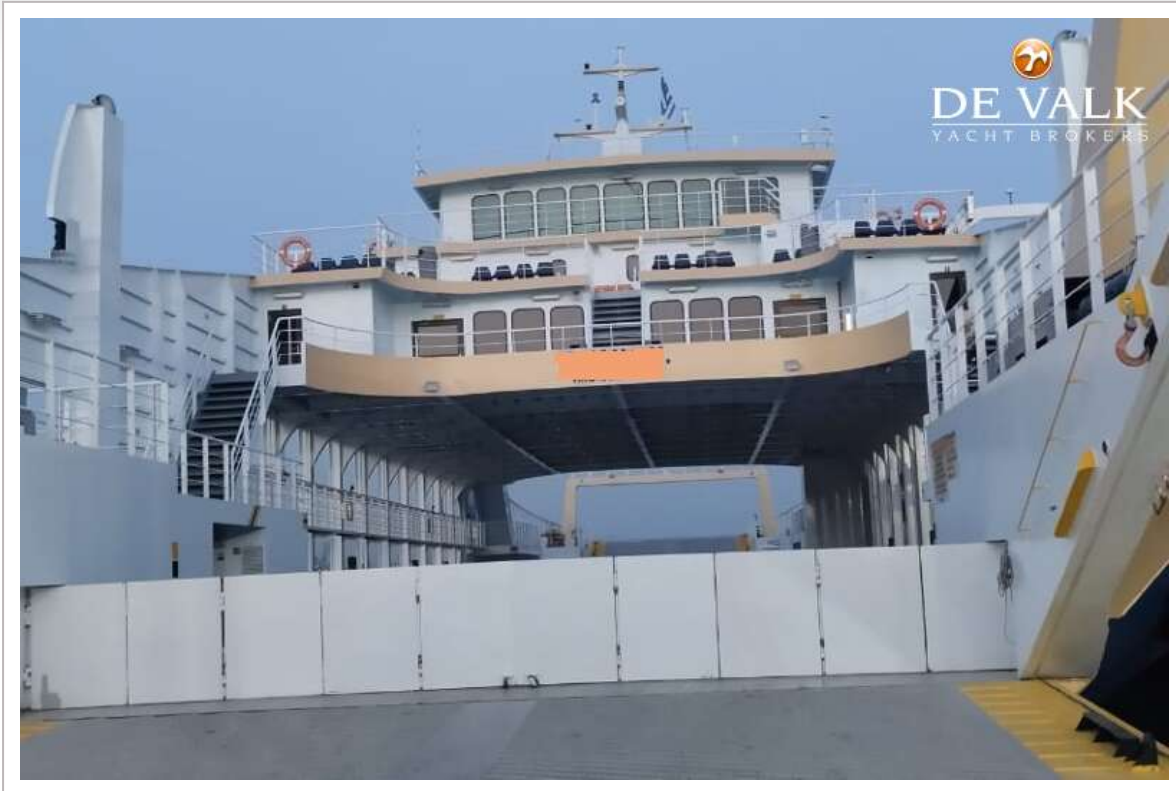
# RO/PAX DOUBLE ENDED FERRY 78 M



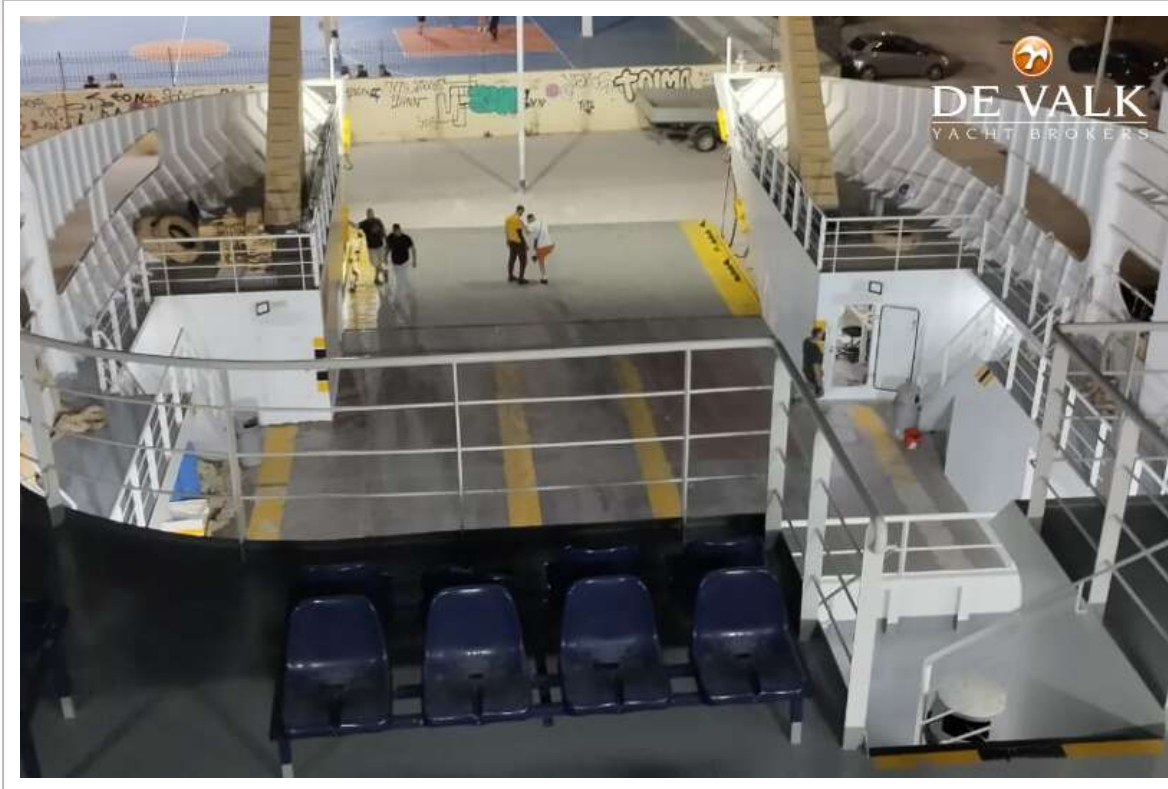
# RO/PAX DOUBLE ENDED FERRY 78 M



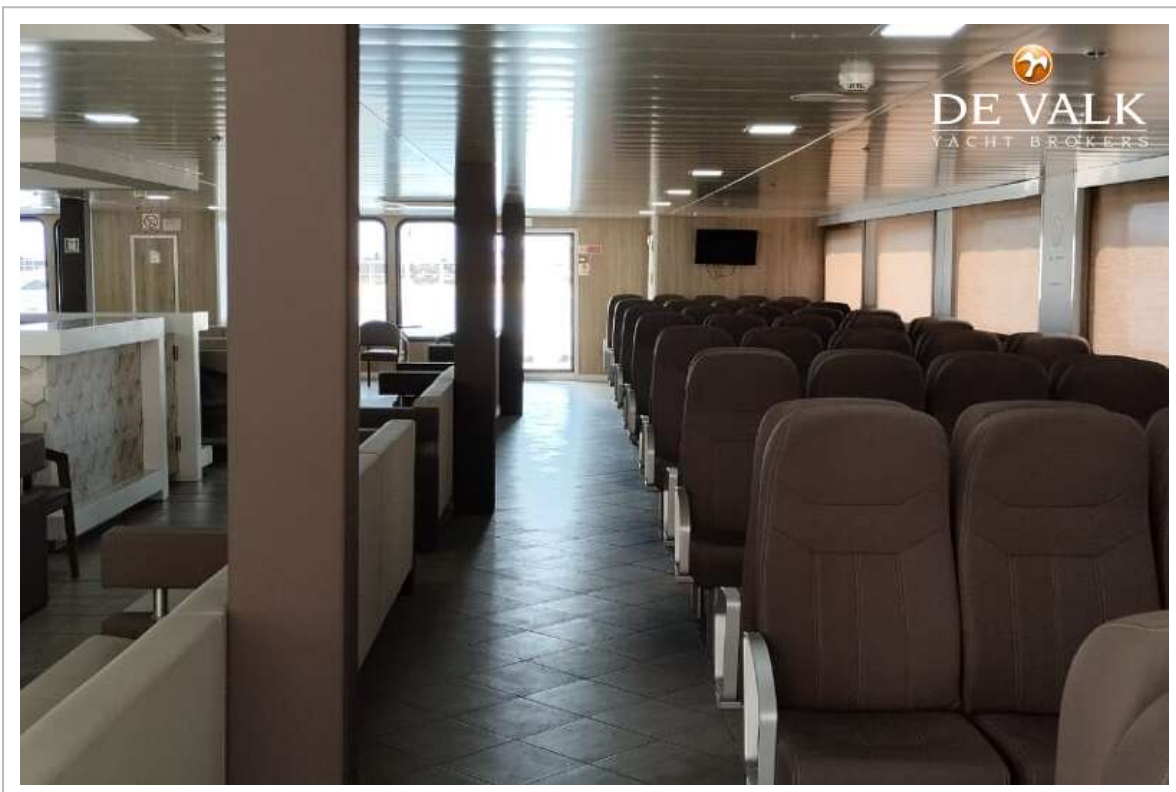
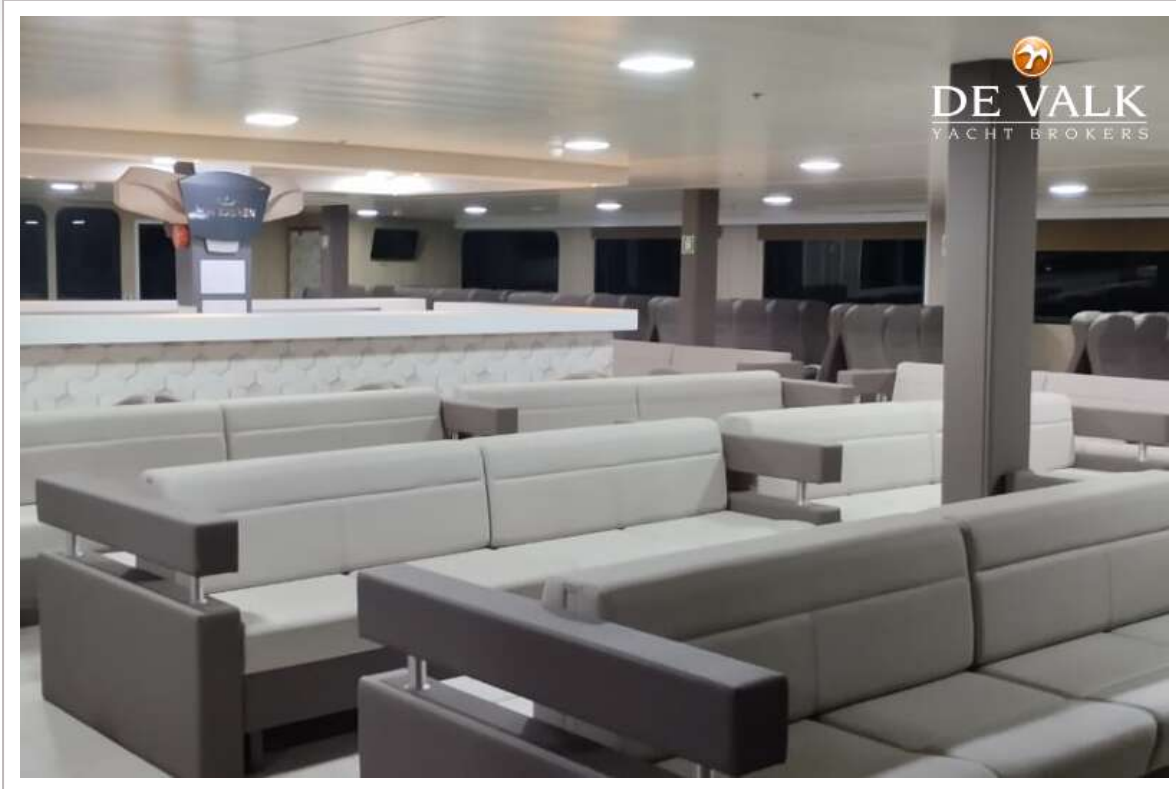
# RO/PAX DOUBLE ENDED FERRY 78 M



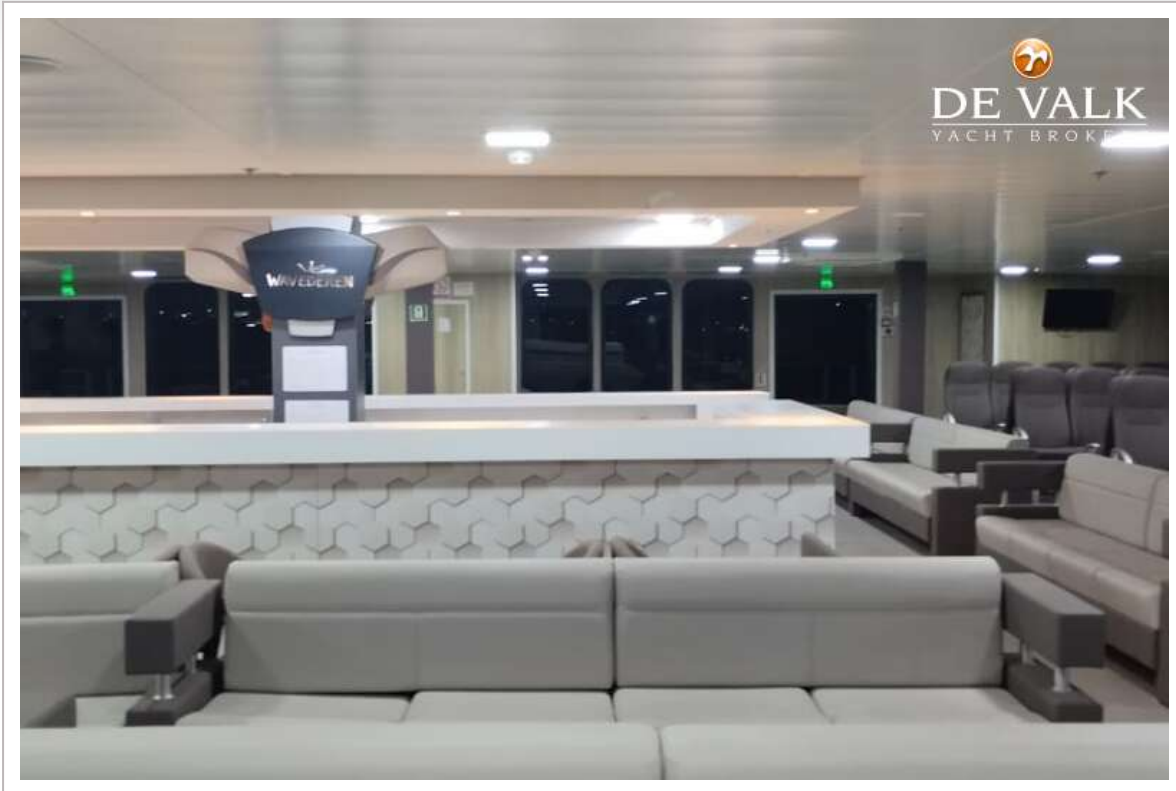
# RO/PAX DOUBLE ENDED FERRY 78 M



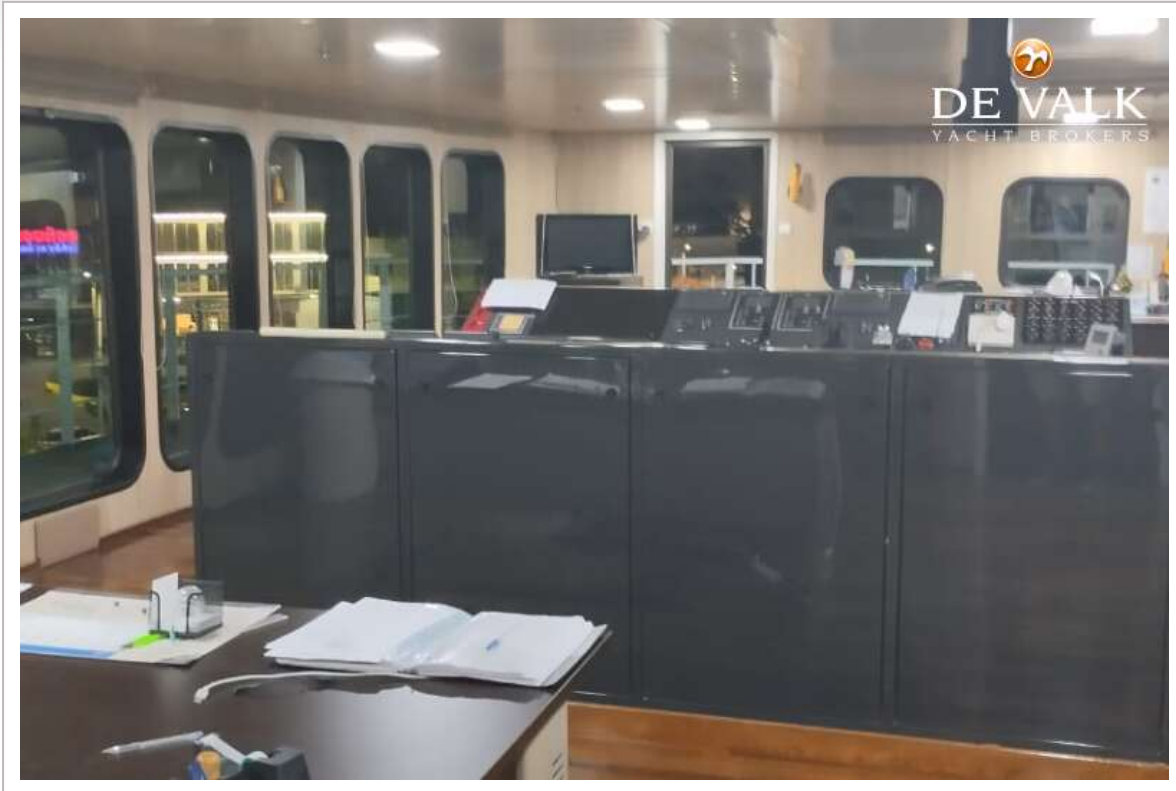
# RO/PAX DOUBLE ENDED FERRY 78 M



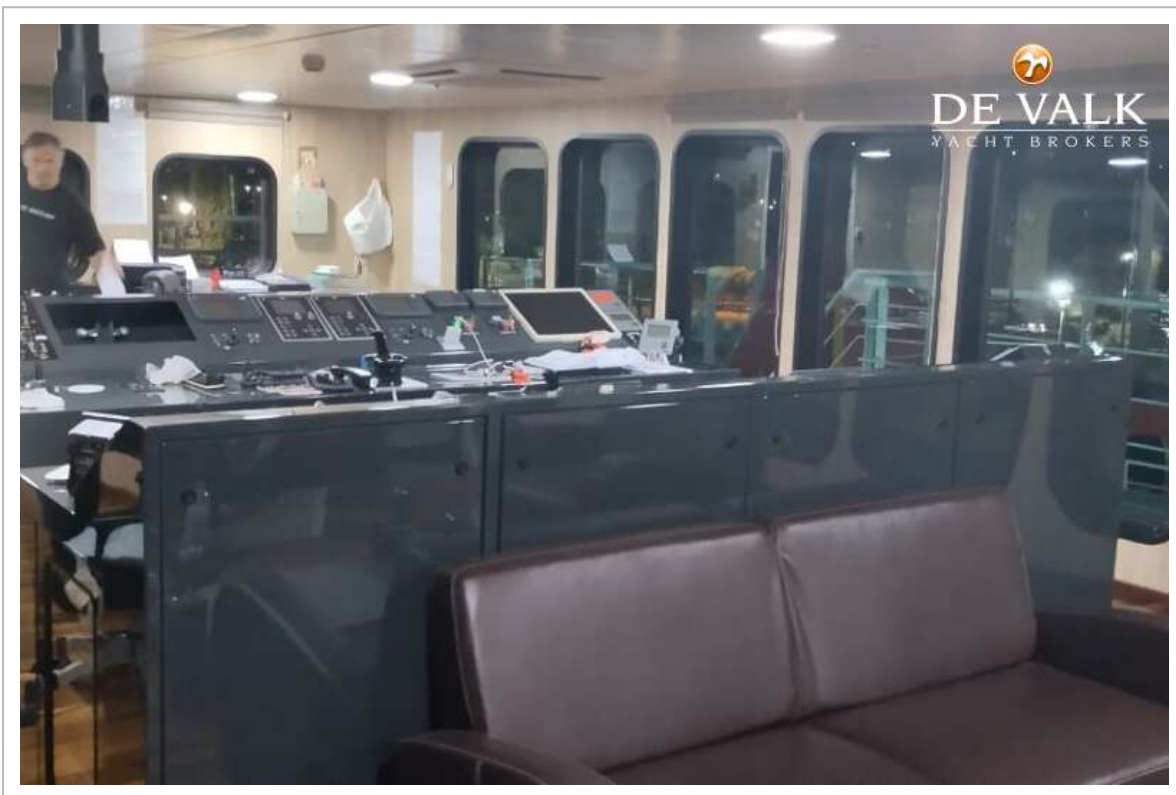
# RO/PAX DOUBLE ENDED FERRY 78 M



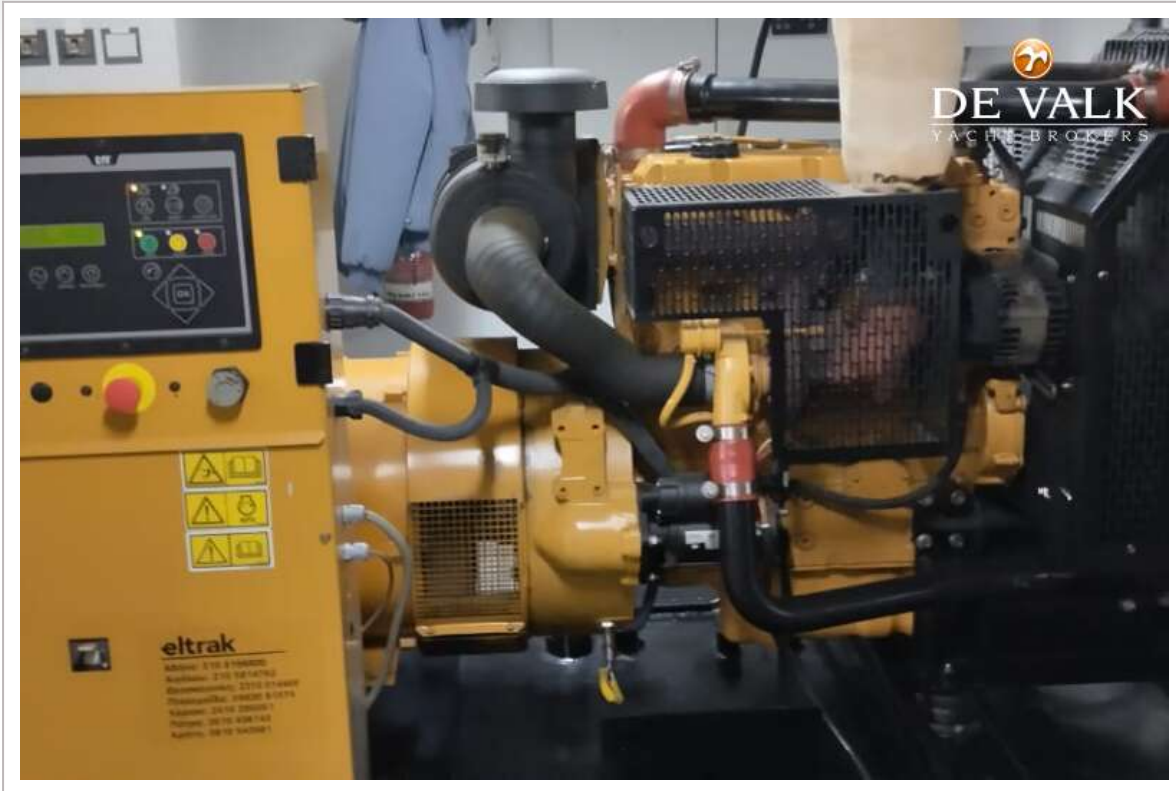
# RO/PAX DOUBLE ENDED FERRY 78 M



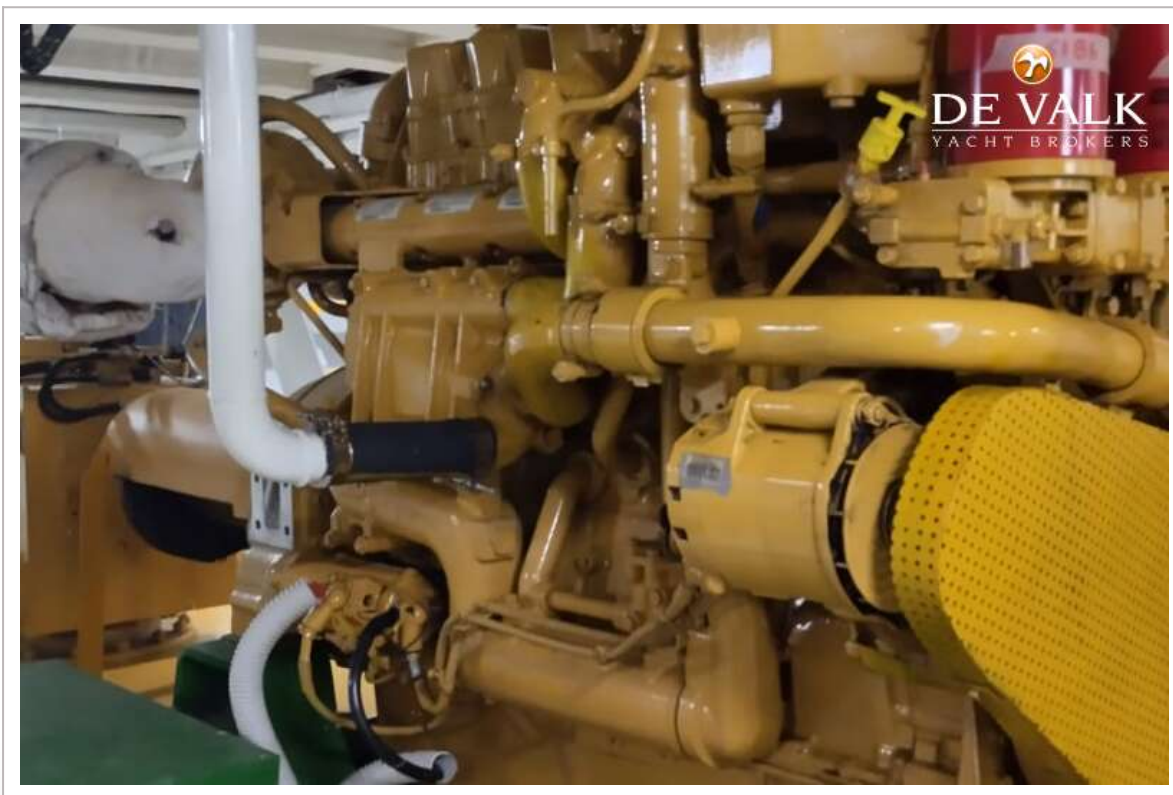
# RO/PAX DOUBLE ENDED FERRY 78 M



# RO/PAX DOUBLE ENDED FERRY 78 M



# RO/PAX DOUBLE ENDED FERRY 78 M



# RO/PAX DOUBLE ENDED FERRY 78 M



# RO/PAX DOUBLE ENDED FERRY 78 M



# RO/PAX DOUBLE ENDED FERRY 78 M

