



BAVARIA 40 VISION



## KOMMENTARE DES MAKLERS

Vision Series from Bavaria Yachts was created not for the charter market, but for the private owners that plan to use their boats for extended cruising. The layout, controls, and systems of the Bavaria 40 Vision offer better comfort for the intended crew. With 6-foot 7-inch headroom and plenty of daylight, the 40 Vision provides one of the most comfortable, airy and bright interiors in her class. The particular boat has a new engine (2023) & many upgrades done by the present owner.

*Sofia Iliia-Salvanou*

## TECHNISCHE DATEN

<b>Maße</b>	11.99 x 3.99 x 1.76 (m)	<b>Werft</b>	BAVARIA YACHTBAU
<b>Baujahr</b>	2007	<b>Kabinen</b>	2
<b>Material</b>	GFK	<b>Kojen</b>	6
<b>Motor(en)</b>	1 x VOLVO PENTA D2-50 diesel	<b>PS/kW</b>	50.00 (PS), 36.80 (kW)
<b>Verkaufspreis</b>	€ 135.000 (MwSt. Bezahlt)	<b>Liegeplatz</b>	elsewhere / nicht im Verkaufsbüro

## KONTAKT

<b>Verkaufsbüro</b>	De Valk Corfu	<b>Telefon</b>	(+30) 266 111 8095
<b>Adresse</b>	New Port of Corfu, near Gouvia Marina 490 83 Corfu Greece	<b>E-Mail</b>	corfu@devalk.nl

## HAFTUNGSAUSSCHLUSS

Diese Angaben erfolgen nach bestem Wissen, können jedoch nicht garantiert werden.



## ALLGEMEIN

<b>Modell</b>	BAVARIA 40 VISION
<b>Typ</b>	Segelyacht
<b>Rumpflänge (m)</b>	11,99
<b>Breite (m)</b>	3,99
<b>Tiefgang (m)</b>	1,76
<b>Baujahr</b>	2007
<b>Werft</b>	BAVARIA YACHTBAU
<b>Land</b>	Deutschland
<b>Entwerfer</b>	J & J
<b>Brutto tonnage</b>	13,7
<b>Netto tonnage</b>	4,1
<b>Rumpfmateral</b>	GFK
<b>Rumpffarbe</b>	Weiß
<b>Art Kiel</b>	Flossen Kiel
<b>Deckmaterial</b>	GFK
<b>Deck Finish</b>	Teak Cleaned & oiled annually
<b>Pflicht Bedeckung</b>	Teak
<b>Antifouling (Jahr)</b>	2024
<b>Fenster Einfassung</b>	Remove, reseal & place all port windows
<b>Decks Luke</b>	ja
<b>Radar Träger</b>	ja
<b>Treibstofftank (Liter)</b>	220 +140 day tank
<b>Füllstandsanzeige (Treibstofftank)</b>	ja
<b>Treibstoff Tagestank (Liter)</b>	140
<b>Füllstandsanzeige (Tagestank)</b>	ja
<b>Trinkwassertank (Liter)</b>	150 (bow) + 220 (aft)
<b>Füllstandsanzeige (Trinkwasser)</b>	ja
<b>Fäkaelien Tank (Liter)</b>	130, All pipes replaced.
<b>Füllstandsanzeige (Fakaelientank)</b>	ja
<b>Radsteuerung</b>	ja



Weitere Info	Watermaker was removed but pipes to tanks were lwft in place
Weitere Info	Dehumidifier MAECO, permanently mounted.
Weitere Info	Thermostatic mixer to control hot water, in bathroom& bath platt

## UNTERKUNFT

Kabinen	2
Kojen	6
Fussboden	Teak
Salon	ja
Navigation Zenter	ja
Kartentisch	ja
Achterkabine	ja
Dinette	ja
Tür zum Cockpit	ja
Kombüse	ja
Arbeitsfläche	ja
Spülbecken	ja
Herd	ENO with electric ignition (3 Gas bottles on board)
Ofen	ja
Kuhlschrank	85Lt (2024) and cooler 150 Lt
Gefrier Truhe	75 Lt (aft cabin)
Warmwasser System	ja
Wasserdruck System	ja
Kaffeemaschine	ja
Geschirrausstattung	ja
Eignerkabine	Doppelbett Renewed upholstery (2020), custom made sheets & covers
Kleiderschrank	ja
Badezimmer	ja
Toilet	en suite
Toilette System	elektrisch JABSCO silent flush (2022)



Handwaschbecken	ja
Dusche	ja
Gästekabine 1	Doppelbett Bow. (Flexima premium mattress plus soft top (2023)
Kleiderschrank	ja
Badezimmer	Large with large cubicle shower
Toilette	JABSCO silent flush (2022)
Toilette System	elektrisch
Handwaschbecken	ja
Dusche	ja
Weitere Info	Mirrors new (2024)
Weitere Info	Magma coal Grill with mount (kept in Garage)
Weitere Info	Fishing RODS and mounts on aft rail

## MASCHINEN

Motoranzahl	1
Marke	VOLVO PENTA
Typ	D2-50
PS	50
kW	36.80
Kraftstoffart	Diesel
Marschgeschwindigkeit (Kn)	7,5
Motorstunden	170
Kühlungssystem Motor	NEW Engine 2023 & NEW Sail Drive & New alternator
Antrieb	Saildrive
Bugschraube	Serviced 2024
Propeller Typ	New (2024)
Elektrische Bilgenpumpe	ja
Bilge Alarm	ja
Batterien	ja
Starterbatterie	New (2023)
Versorgungsbatterie	600 Ah Lifepo4



<b>Bugschraubebatterie</b>	75 Ah Optima
<b>Batterie Monitor</b>	ja
<b>Batterie Ladegerat</b>	ja
<b>Umwandler</b>	1.600Watt (2024), led to all 220 sockets. 4x220 sockets in saloo
<b>Batterie Ladegerat/Umwandler</b>	ja
<b>Solar panele</b>	400 Watts. Victron charger. Fitted on custom made aft arch
<b>Landstrom</b>	ja
<b>Wasserbereiter</b>	Removed but pipes remain
<b>Weitere Info</b>	One socket 220 in each cabin & USB charging in each cabin.
<b>Weitere Info</b>	Separate transformer for shore power 2.000 Watt
<b>Weitere Info</b>	Philipi instrumentation( fuel level in both tanks +electrical %

## NAVIGATION

<b>Kompass</b>	ja
<b>Tiefenanziege</b>	ja
<b>Logge</b>	Digital online Logbook, records all passages & provides keydata
<b>UKW</b>	X 2 (one on NAV station & one in cockpit)
<b>Autopilot</b>	ja
<b>Radar</b>	Fitted on custom made aft arch
<b>GPS</b>	Antenna (2020)
<b>Plotter</b>	Chart plotter Raymarine C90W with multiple cards
<b>AIS Transponder</b>	ja
<b>Epirb</b>	ja
<b>"MUB" Sender</b>	ja
<b>Navigation Beleuchtung</b>	ja
<b>Suchscheinwerfer</b>	ja
<b>Weitere Info</b>	SSB Radio with antenna in the rear
<b>Weitere Info</b>	STARLINK (2024). ORCA CO-Pilot operated on ipad iphone (2023)

## AUSRÜSTUNG



<b>Bimini</b>	New 2024
<b>Cockpit Polster</b>	NEW
<b>Cockpit Tisch</b>	ja
<b>Badeplattform</b>	Electric with remote control
<b>Bugtreppe</b>	And plattform with integrated anchor.
<b>Gangway</b>	ja
<b>Heckdusche</b>	ja
<b>Anker</b>	Rocna Vulcan 25 Kg
<b>Ankerkette</b>	70 m x 10mm
<b>Anker 2</b>	Fortress Spare
<b>Ankerkette</b>	40m rope
<b>Ankerwinde</b>	elektrisch Serviced 2023.Operation at the winch & at wheelhouse
<b>Beiboot</b>	Zodiac 2,7m
<b>Ausserborder</b>	2,5Hp YAMAHA mounted on back rail. SUP 2023
<b>Davits</b>	ja
<b>See Reling</b>	Edelstahl
<b>Rettungsinsel</b>	ja
<b>Rettungsinsel (Pers)</b>	4
<b>Letzte Wartung Rettungsinsel</b>	2024
<b>Schwimvesten</b>	2 MOB for life jackets
<b>Sicherheits Rustung</b>	ja
<b>Rettungsboje</b>	ja
<b>Sicherheitsleine auf Deck</b>	ja
<b>Fenderkissen</b>	ja
<b>Festmacher</b>	ja
<b>Reserve Teilen</b>	ja
<b>Werkzeug</b>	Shackles & blocks
<b>TV</b>	SAMSUNG 24" smart tv in the saloon
<b>Feuerloscher</b>	X 4
<b>Weitere Info</b>	Additional alternator for Lithium Batteries (2023)
<b>Weitere Info</b>	Additional ventilation on request of Volvo engineer sensor.2023



## Weitere Info

Electronic emergency torch, FLARES 2023, MOB Sling Curtecy flags

## RIGG

### Rig

ja

### Stehendes Gut

Inspected 2024

### Großsegel

50m2 with electric winch controlled from helm

### Fock

28m2 furling

### Genua

52m2 furling

### Baumniederhohler

X 2

### Multifunktional Winschen

X6 in cockpit





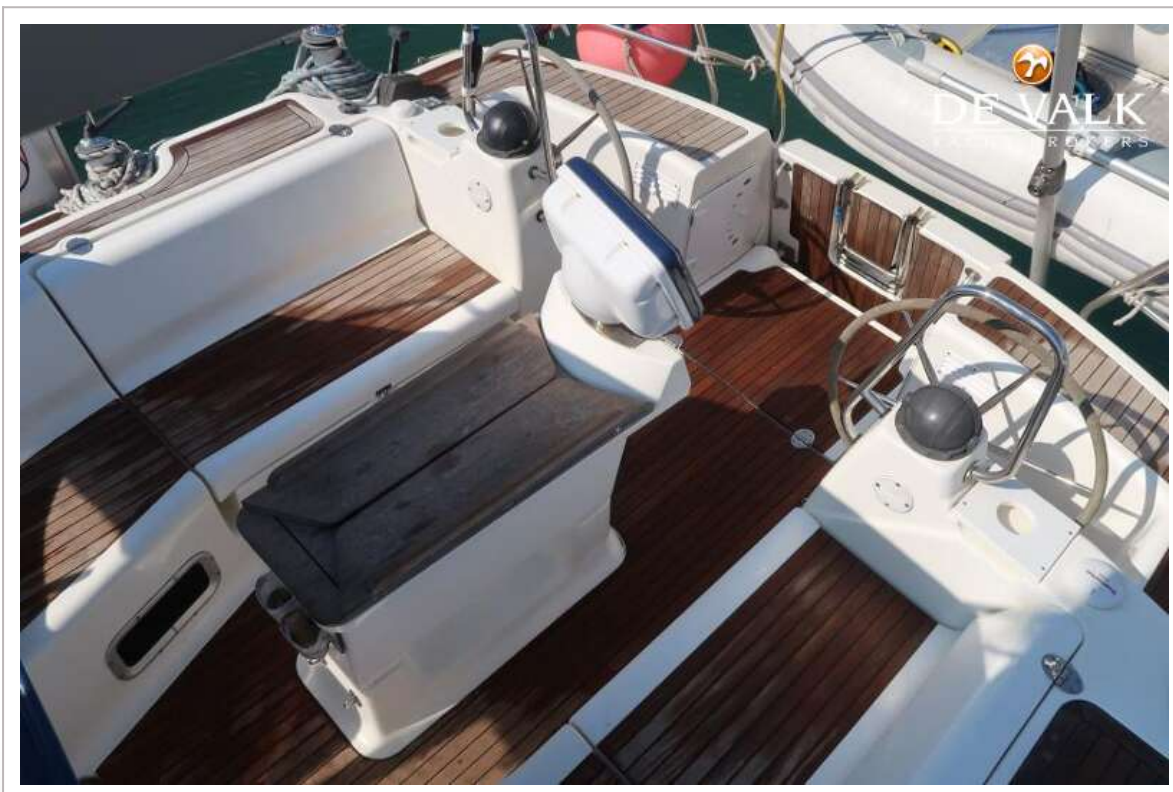
# BAVARIA 40 VISION



# BAVARIA 40 VISION



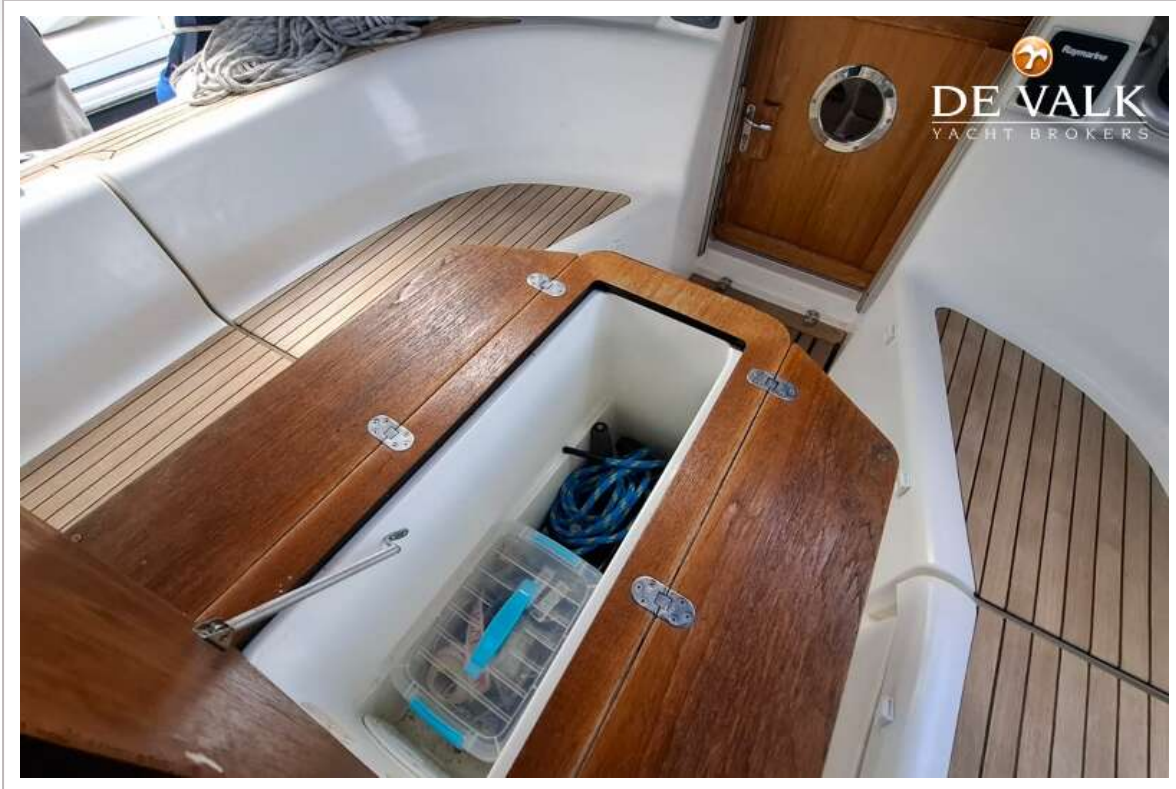
# BAVARIA 40 VISION



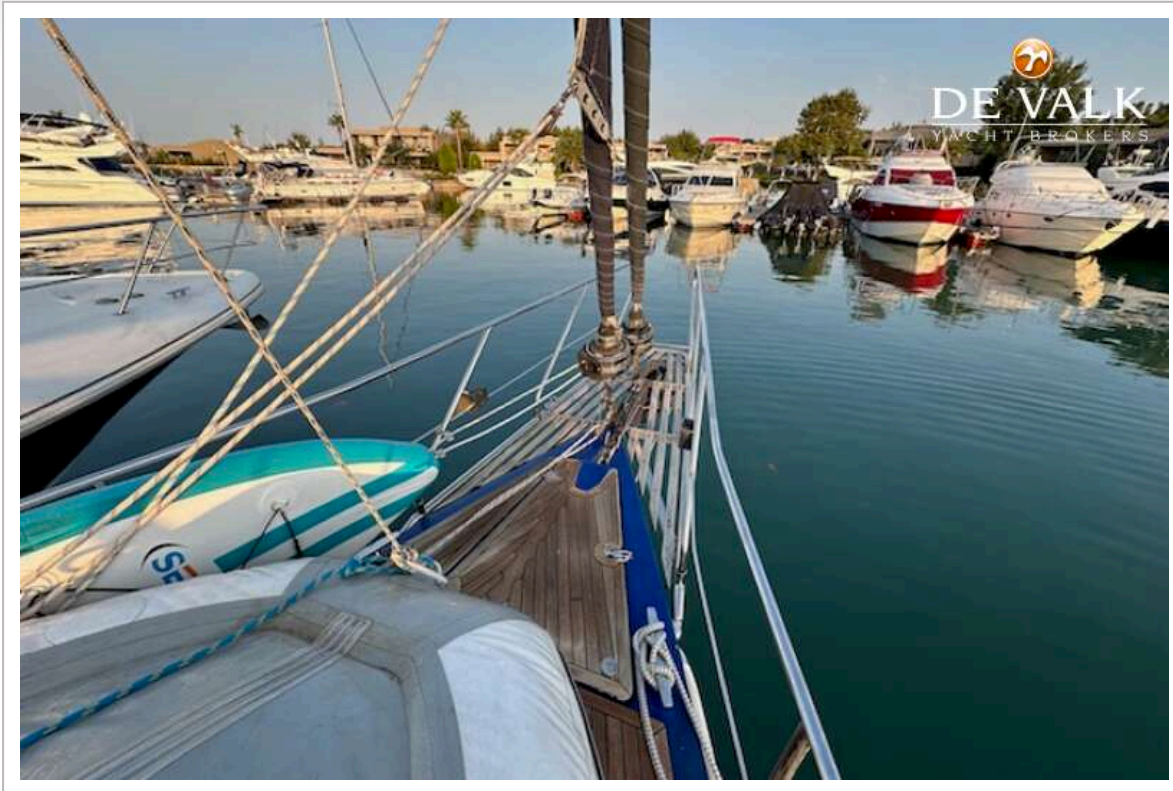
# BAVARIA 40 VISION



# BAVARIA 40 VISION



# BAVARIA 40 VISION



# BAVARIA 40 VISION



# BAVARIA 40 VISION







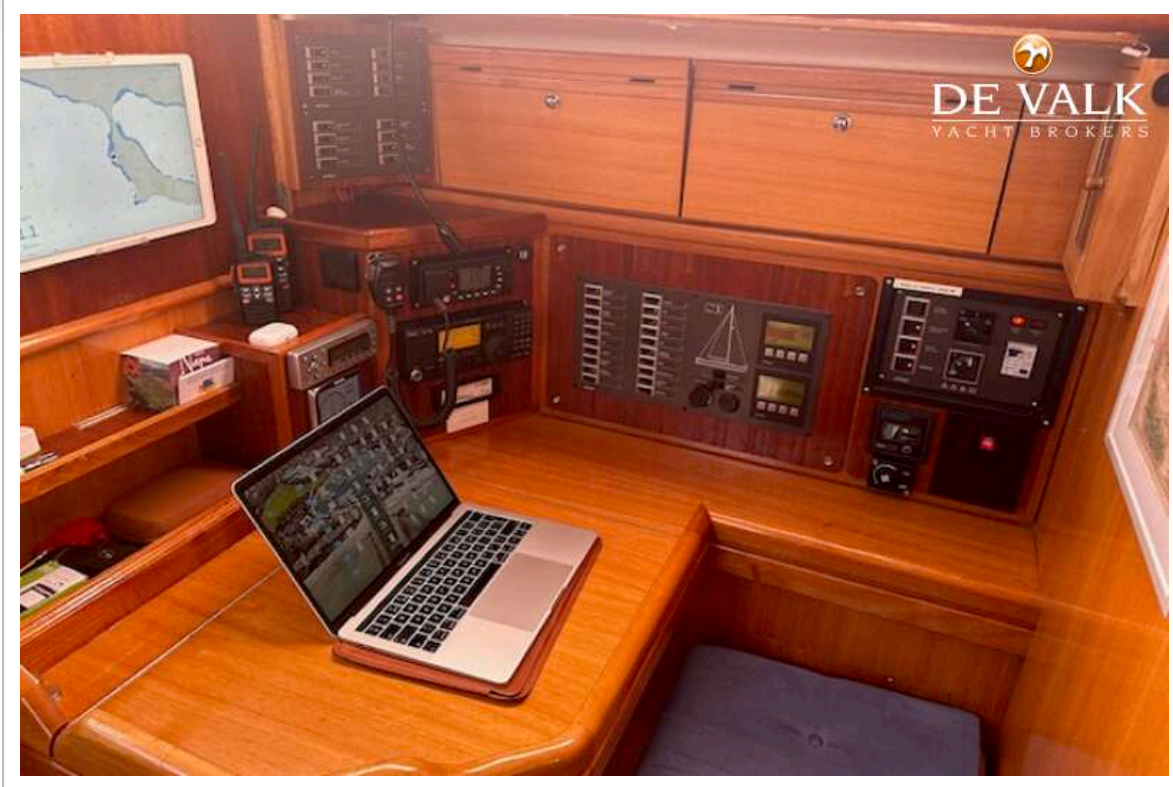
# BAVARIA 40 VISION



# BAVARIA 40 VISION



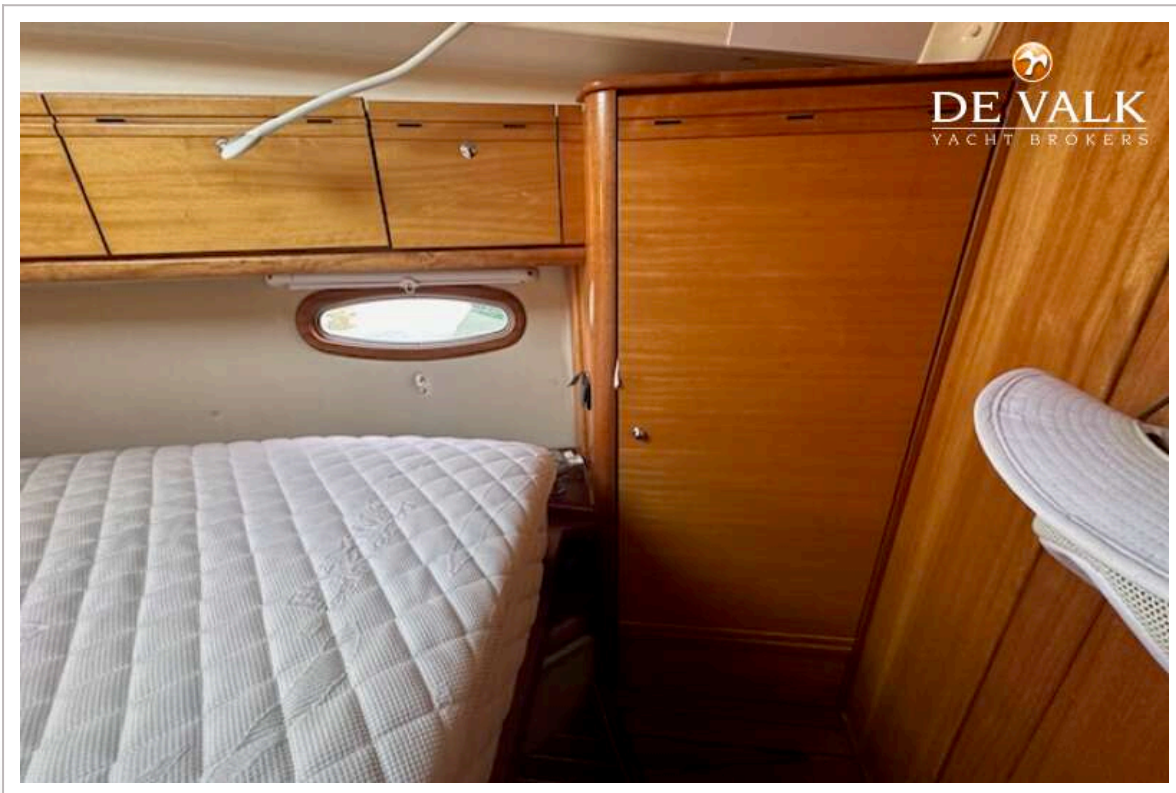
# BAVARIA 40 VISION



# BAVARIA 40 VISION



# BAVARIA 40 VISION



# BAVARIA 40 VISION

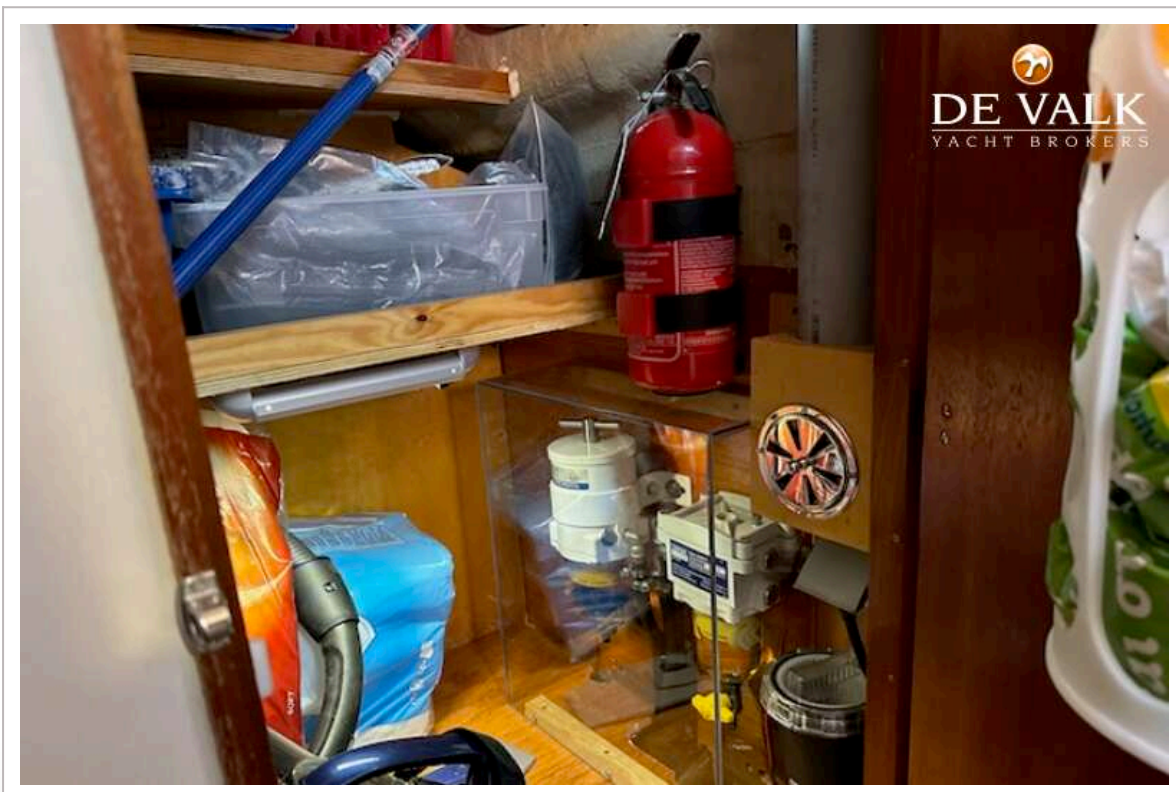


# BAVARIA 40 VISION

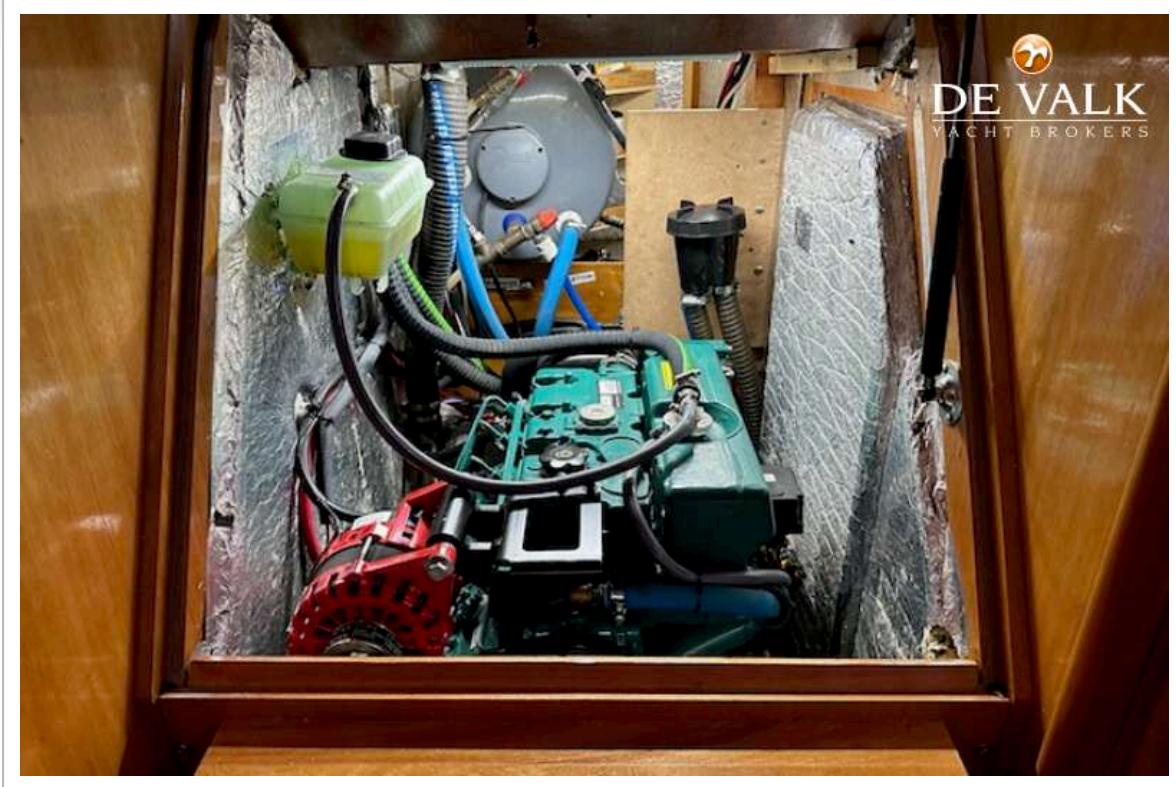




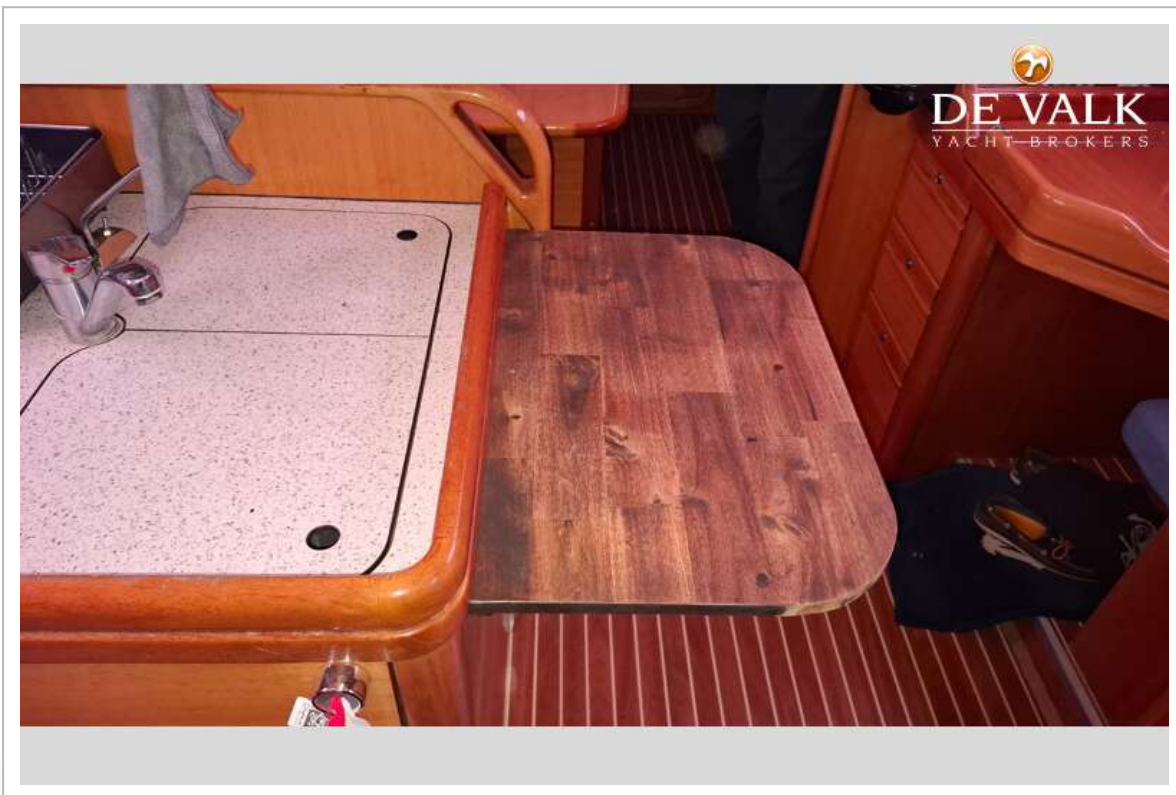
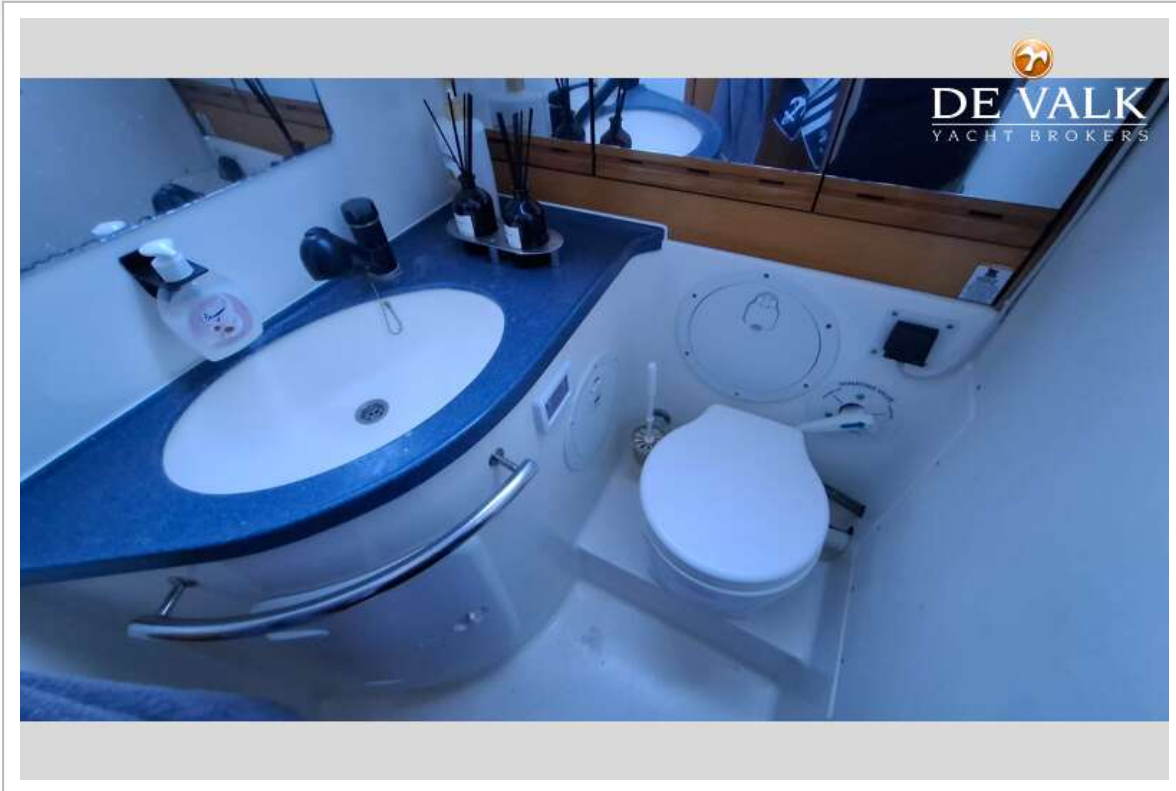
# BAVARIA 40 VISION



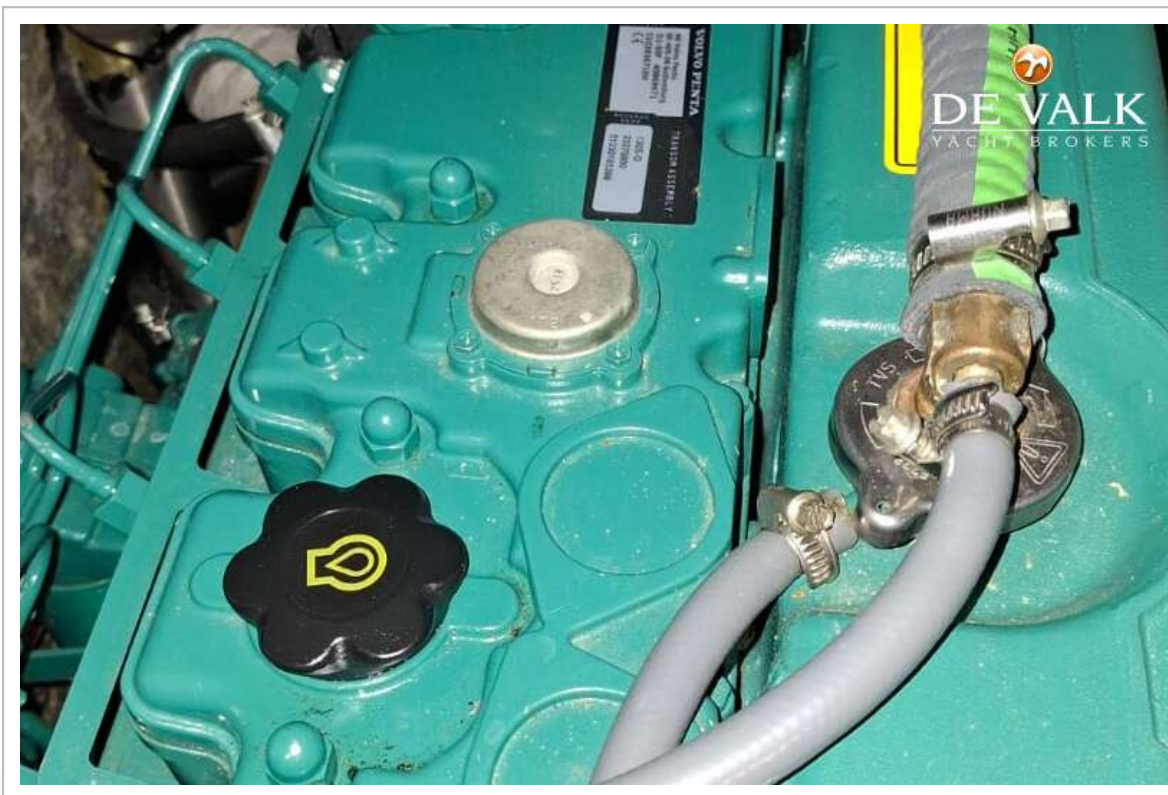
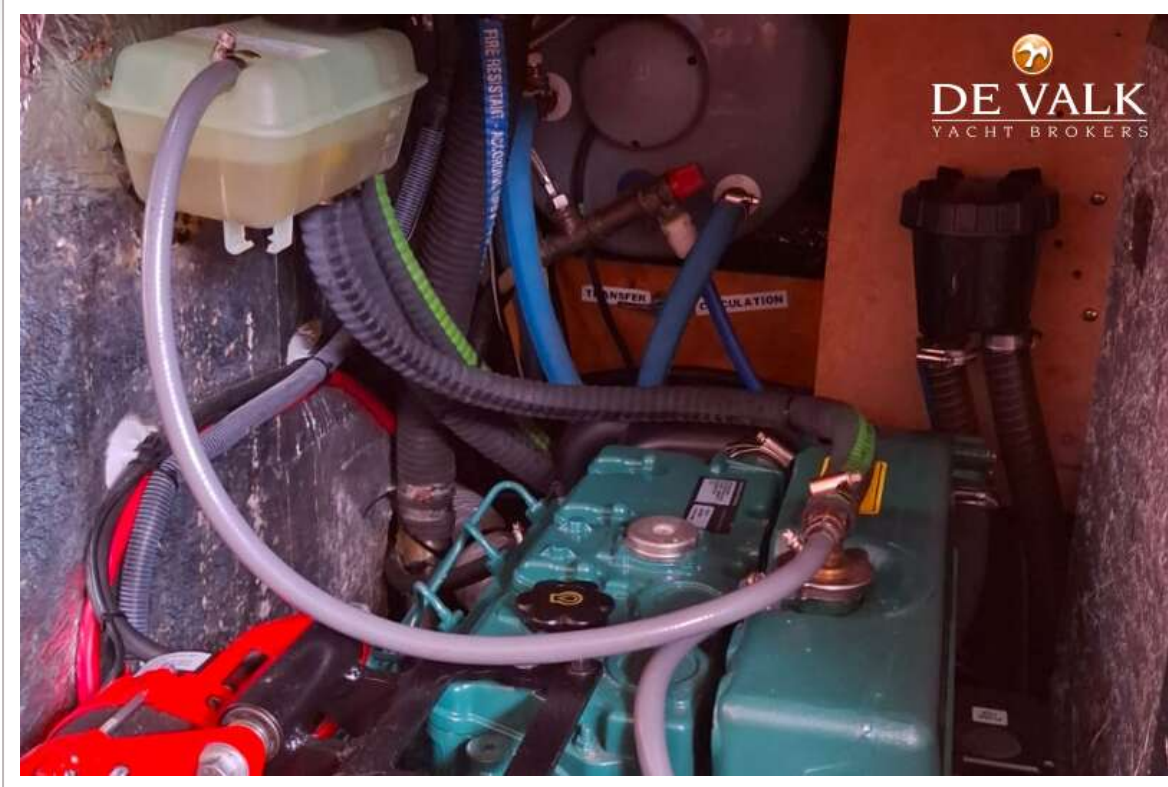
# BAVARIA 40 VISION



# BAVARIA 40 VISION



# BAVARIA 40 VISION



# BAVARIA 40 VISION

