



DE VALK
YACHT BROKERS



NAUTOR SWAN 60



DE VALK
YACHT BROKERS

KOMMENTARE DES MAKLERS

The Swan 60 is a true racer-cruiser model optimised for both, featuring a carbon hull, mast, and PBO rigging, along with fully electric winches for 3 people to easily shorthand sail her. The flared topsides enhance hiking for competitive sailors but racing aesthetics aside, the spacious cockpit will comfortably seat 10 for champagne sailing. Below decks, the yacht has been finished to the highest level, with a very practical and well thought out galley for weeks at sea. All three cabins have an en-suite bathroom and both the rear cabins have twin beds that can be easily converted into doubles!

Oliver Stehula

TECHNISCHE DATEN

Maße	18.67 x 5.27 x 3,00 / 3.60 (m)	Werft	Oy Nautor AB
Baujahr	2009	Kabinen	3
Material	GFK	Kojen	8
Motor(en)	1 x Volvo Penta D3 diesel	PS/kW	103.00 (PS), 75.81 (kW)
Angebotspreis	€ 800.000 (MwSt. Bezahlt)	Liegeplatz	beim Verkaufsbüro

KONTAKT

Verkaufsbüro	De Valk Palma	Telefon	+34 971 40 29 11
Adresse	Port. Cala Nova, Avda. Joan Miro, 327 07015 Palma de Mallorca ES	E-Mail	palma@devalk.nl

HAFTUNGSAUSSCHLUSS

Diese Angaben erfolgen nach bestem Wissen, können jedoch nicht garantiert werden.



ALLGEMEIN

Modell	NAUTOR SWAN 60
Typ	Segelyacht
Rumpflänge (m)	18,67
Breite (m)	5,27
Tiefgang (m)	3,60
Tiefgang min (m)	3,00
Stehhöhe (m)	2,10
Baujahr	2009
Lancierung	2009
Werft	Oy Nautor AB
Land	Finnland
Entwerfer	German Frers
Gewicht (t)	23
CE Norm	A
Rumpfmateriäl	GFK
Rumpffarbe	Alwgríp Snow White
Art Kiel	Fin Keel with Bulb
Schlíngerkielen	Yes
Material Aufbauten	Carbon reinforcement
Deckmaterial	Teak
Deck Finish Aufbauten	GRP
Pflicht Bedeckung	Teak
Antifouling (Jahr)	Hempel silicone one 2023
Decks Luke	Forward
Bullauge	Stainless steel Góiot
Radar Träger	Collapsible
Treibstofftank (Liter)	400
Treibstoff Tagestank (Liter)	500
Trinkwassertank (Liter)	450
Fäkaelien Tank (Liter)	65



Radsteuerung	Hydraulic with twin carbon steering wheels
Aussen Steuerung	Twin hydraulic Carbon wheels
Weitere Info Rumpf	Hull painting 2022
Weitere Info Farbe und Anstrich	ja
Weitere Info	Canvas covers for steering wheel

UNTERKUNFT

Kabinen	3
Kojen	8
Innen	Walnut
Fussboden	Vinyl wood
Offenen Cockpit	Collapsible table with cockpit seating
Salon	Open
Standhöhe Salon (m)	2.50m
Navigation Zenter	Yes
Speisezimmer	Teak table with seating for 6
Kombüse	Yes
Arbeitsfläche	Corian in white
Spülbecken	Yes
Herd	Yes - NEW being replaced
Ofen	Yes - NEW being replaced
Dunstabsauge	Yes
Kuhlschrank	Yes with stainless steel drawers
Gefrier Truhe	Yes
Geschirrspulmaschine	Yes
Eignerkabine	Forward
Länge Bett (m)	Double
Kleiderschrank	Hanging shelving
Badezimmer	En-suite
Toilette System	Techma
Dusche	Yes



NAUTOR SWAN 60

Gästekabine 1	Starboard
Länge Bett (m)	Double
Kleiderschrank	Hanging shelving
Badezimmer	En-suite
Toilette System	Techma
Dusche	Yes
Gästekabine 2	Port
Länge Bett (m)	Double
Badezimmer	En-suite
Toilette System	Techma
Dusche	Yes
Weitere Info	Fridge/Freezer compressor units updated 2024

MASCHINEN

Motoranzahl	1
Marke	Volvo Penta
Typ	D3
PS	103
kW	75.81
Kraftstoffart	Diesel
Höchstgeschwindigkeit (Kn)	14
Motorstunden	1900
Antrieb	Saildrive
Bugschraube	Sidepower 2020
Batterien	New 2022

NAVIGATION

Elektrisches Kompass	2 x at Twin Helm
Multi Control Display	B&G Zues 3S
Tiefenanzeige	Yes
Tochter anzeige	4 x B&G on mast



UKW	Yes
Portabel UKW	Yes
Autopilot	B&G
Radar	B&G 2022
Plotter	B&G 9" 2024
AIS Empfänger	Yes
Weitere Info	Full control panel at navigation station

AUSRÜSTUNG

Spritzverdek	Sunbrella white
Bimini	Sunbrella white
Sonnenschirm	Sunbrella white
Cockpit Polster	New 2023
Ausserborder	Honda 20 HP 2022; maintenance 2024
Satellit	B&G 2021

RIGG

Rig	Carbon future fibre ECthree 2023
Stehendes Gut	ja
Marke Mast	MR35E intermediate modulus
Material Mast	Carbon
Salings	3 x Carbon
Durchgehende Mast	Yes
Großsegel	X-drive Carbon/Taffeta 126 m ² 2020
Großsegel-Persenning	Sunbrella white
Durchelatted großsegel	126m ²
Rollref Baum	Regatta boom
Fock	Roller furling 70m ²
Genua	UK X drive endumax carbon 96m ² 2022
Code Zero	Onesails taffeta 178 m ² 2021
Gennaker	296m ² 2023



Sturmfock	Yes
Primare Schot Winschen	Magic trim main sheet system
Multifunktional Winschen	Harken carbon manual
Wisch Schonbezug	Yes
Gennaker-Baum	Yes
Weitere Info	Removable carbon bow sprit
Weitere Info	Mast and Boom painting 2023 Hull paint 2022



NAUTOR SWAN 60



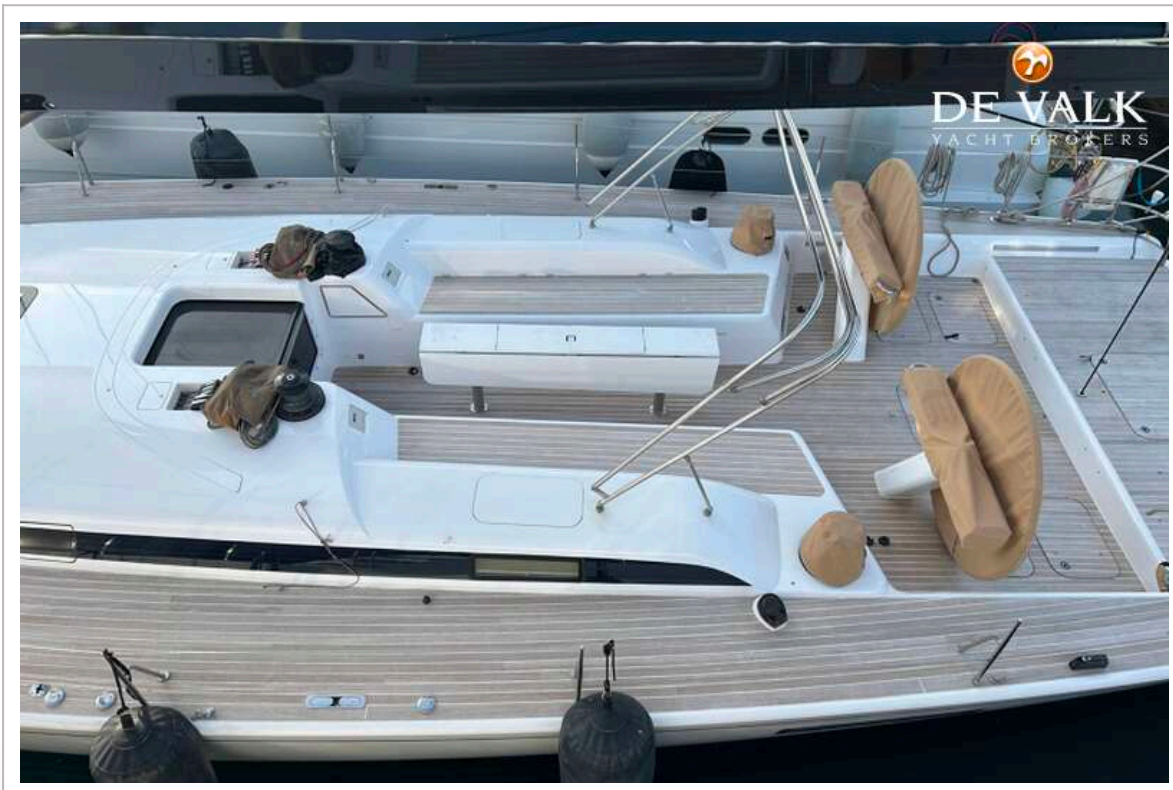
NAUTOR SWAN 60



NAUTOR SWAN 60



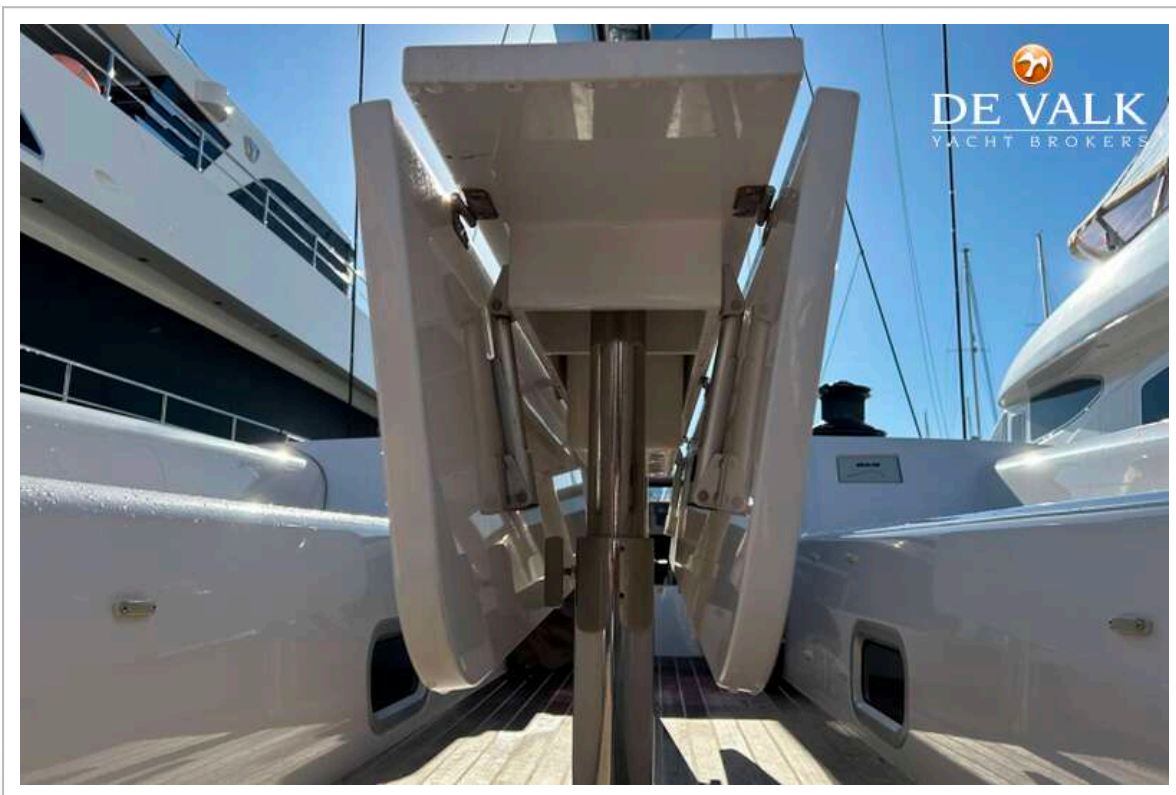
NAUTOR SWAN 60



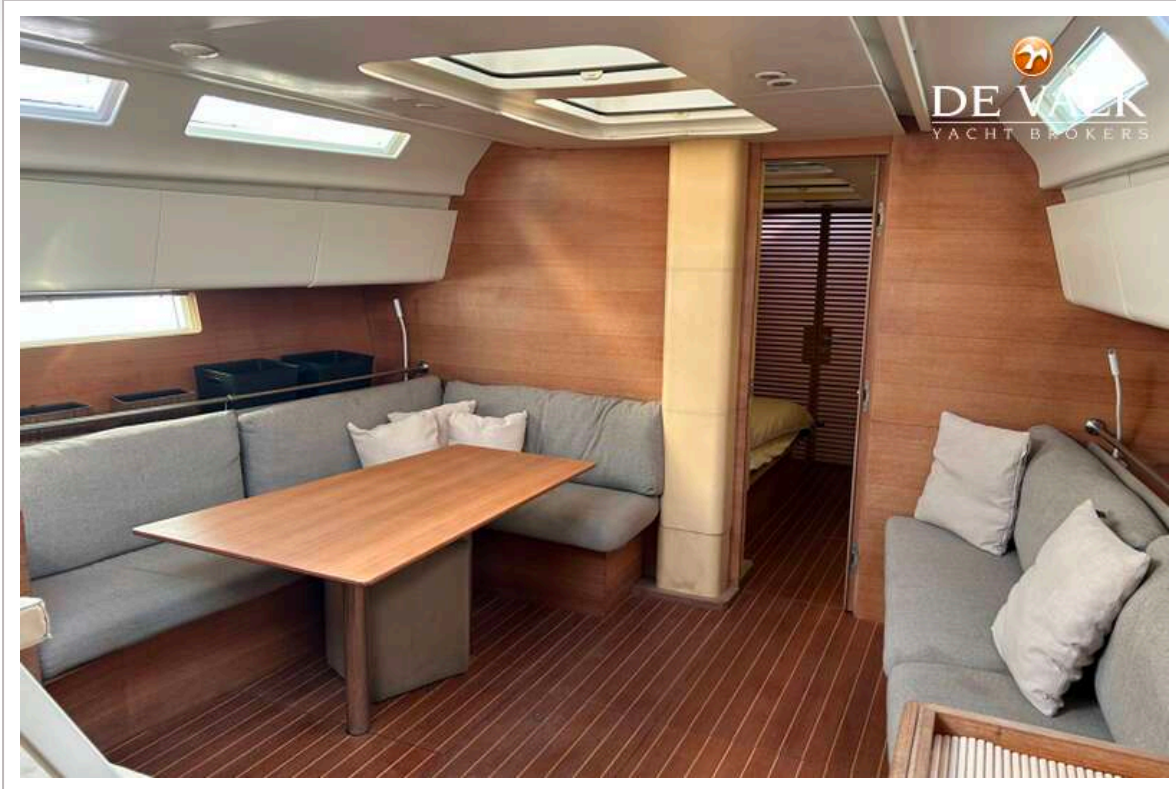
NAUTOR SWAN 60



NAUTOR SWAN 60



NAUTOR SWAN 60



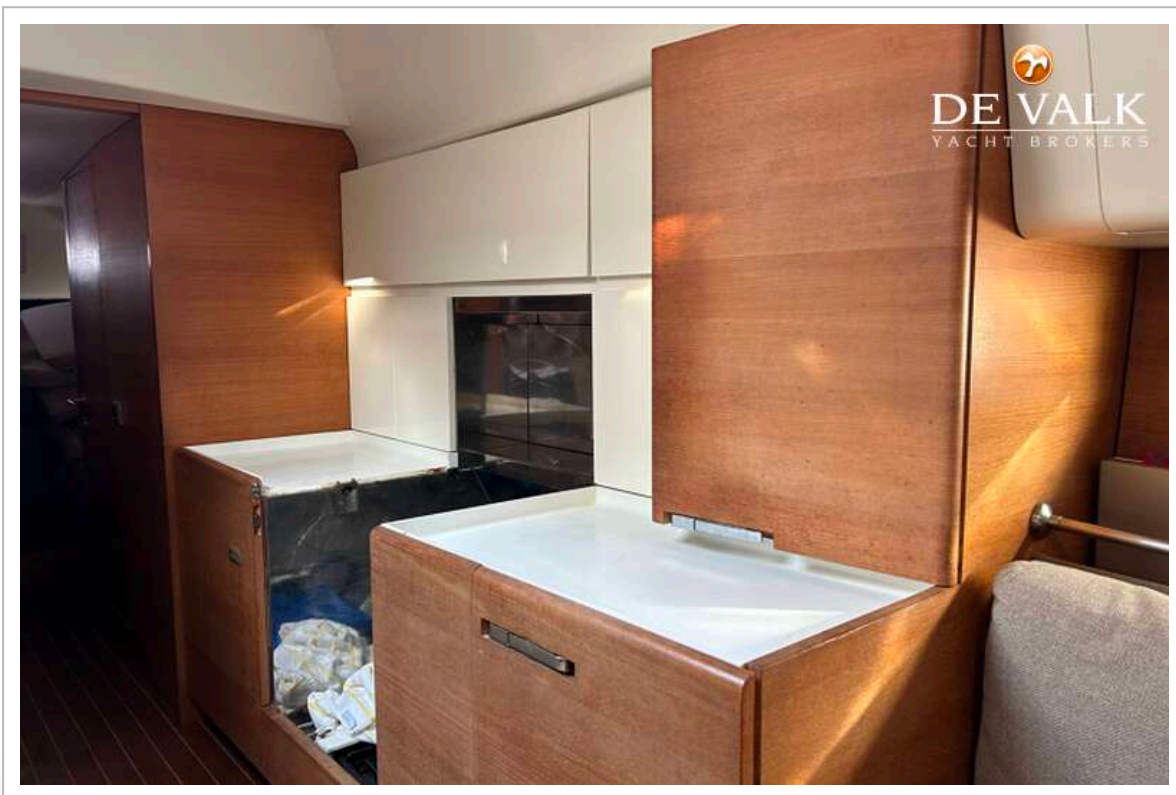
NAUTOR SWAN 60



NAUTOR SWAN 60



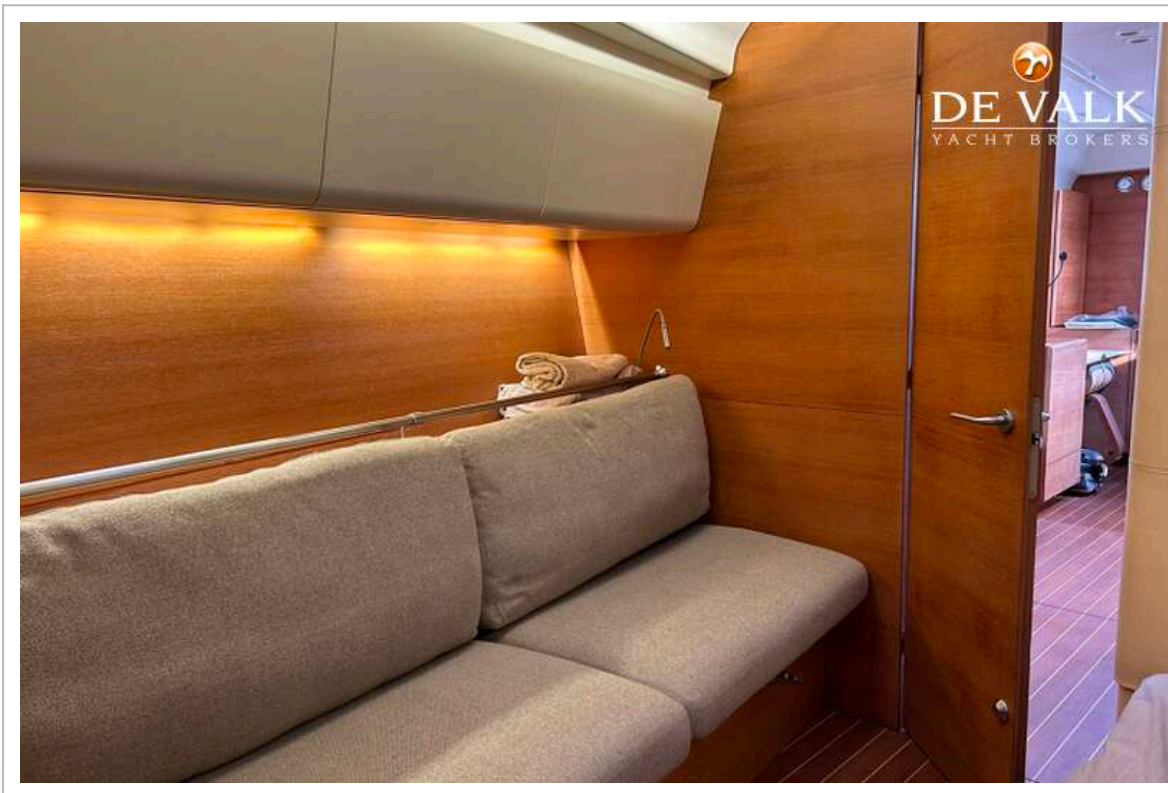
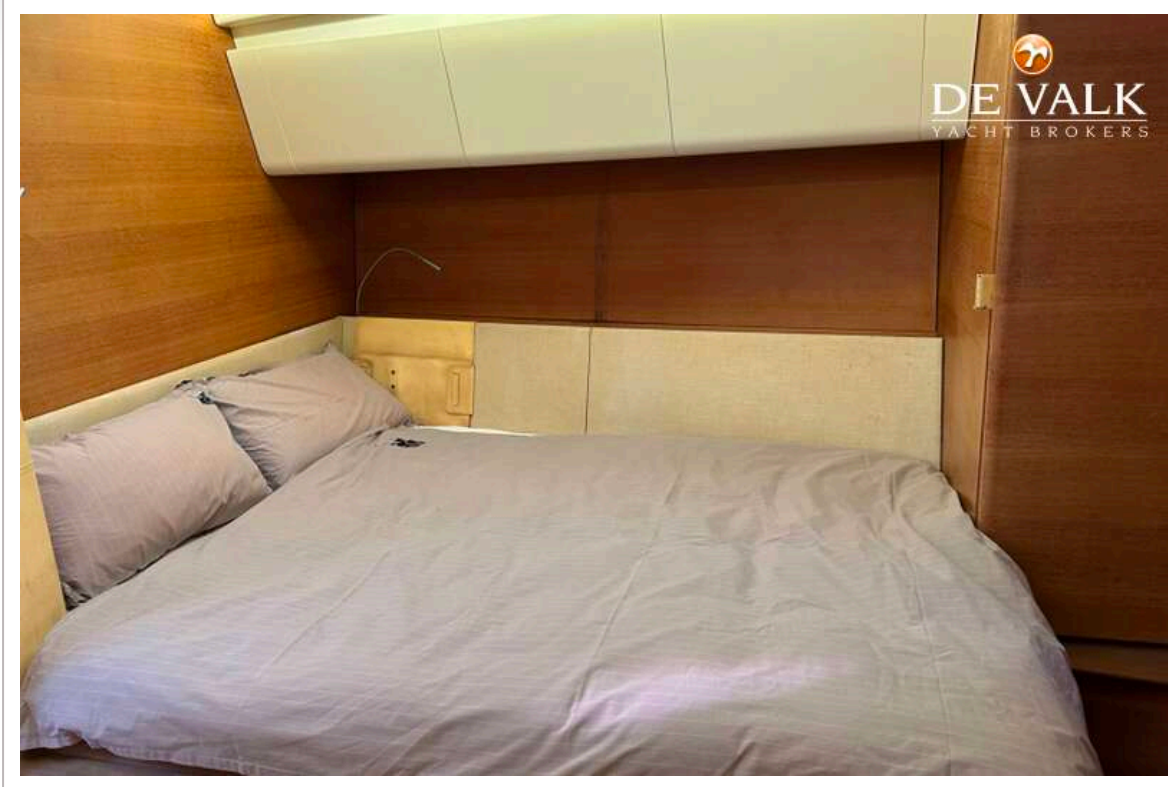
NAUTOR SWAN 60



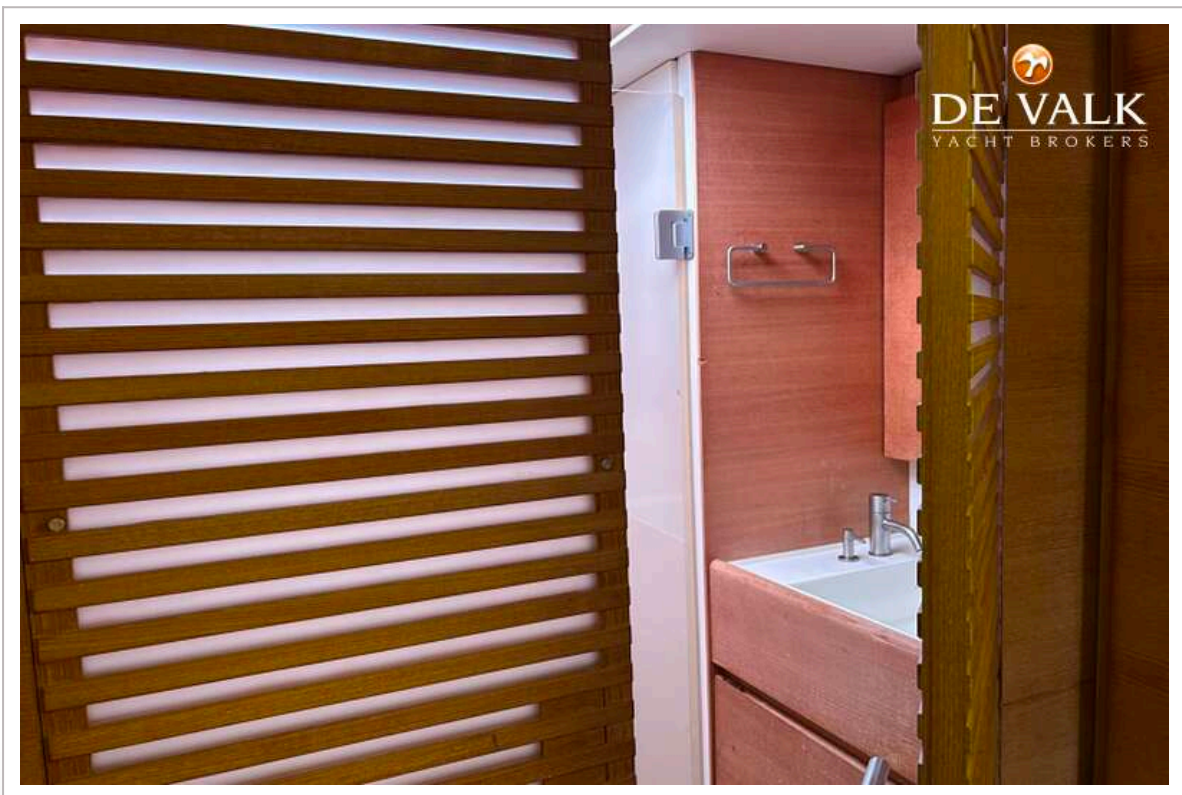
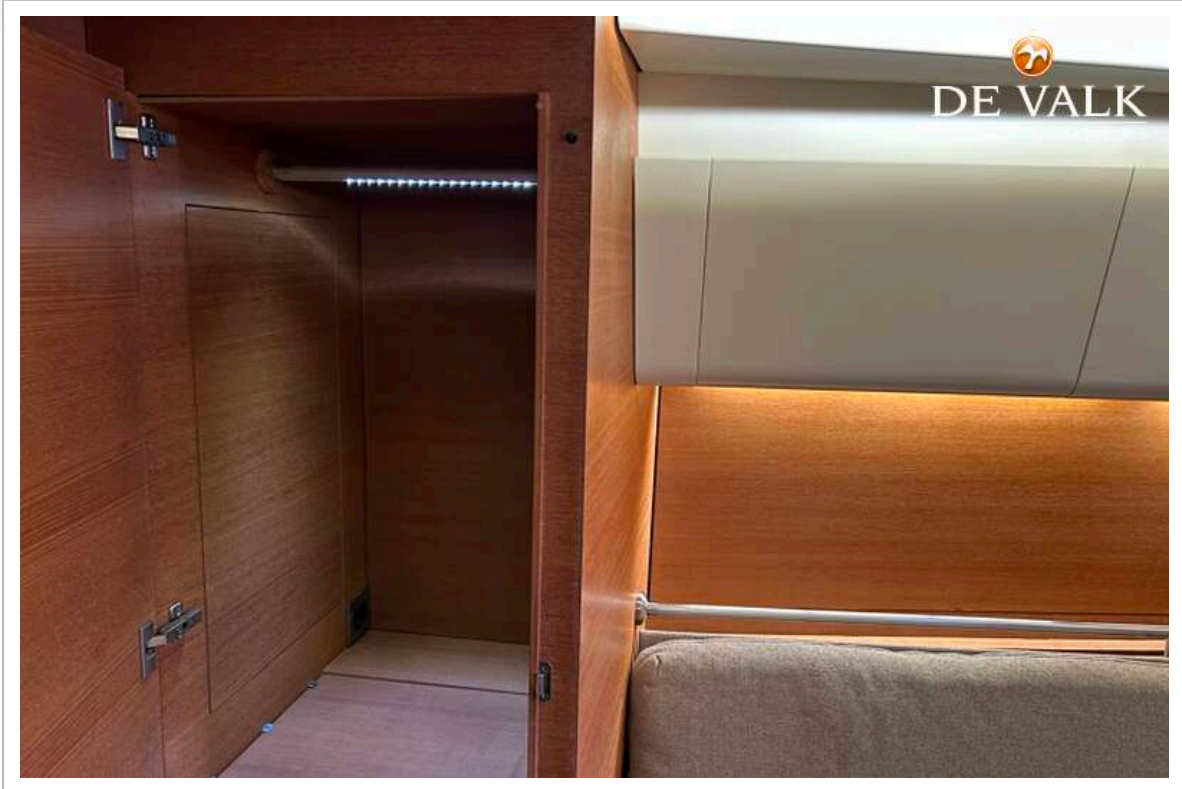
NAUTOR SWAN 60



NAUTOR SWAN 60



NAUTOR SWAN 60



NAUTOR SWAN 60

