



DE VALK
YACHT BROKERS



CLASSIC SAILING YACHT



DE VALK
YACHT BROKERS

KOMMENTARE DES MAKLERS

Classic sailing yacht 'Mees Toxopeus', a ship with a beautiful line and a well-known appearance on Dutch waters. Versatile cruising ship, spacious, seaworthy, and also suitable for shallow water due to the centreboard. Made many cruises, from Norway to Spain, from Ireland to Finland and on the Wadden Sea. A ship with history. Always well maintained and improved over the years. Rigging plan by Willem de Vries Lentsch. Complete refit in 2006-2008 under the design and project management of Olivier van Meer at Ventis in Enkhuizen.

Arne Doodeman

TECHNISCHE DATEN

Maße	14.50 x 4.00 x 1,20 / 2.60 (m)	Werft	Schouten/Muiden, De Unie/Groningen
Baujahr	1942	Kabinen	1
Material	Stahl	Kojen	6
Motor(en)	1 x Nanni 5.280HE diesel	PS/kW	62.00 (PS), 45.63 (kW)
Angebotspreis	€ 149.000 (MwSt. Mehrwertsteuerfrei)	Liegeplatz	contact Monnickendam

KONTAKT

Verkaufsbüro	De Valk Monnickendam B.V.	Telefon	+31 (0)299 65 63 50
Adresse	Hoogedijk 6 1145 PM Katwoude NL	E-Mail	monnickendam@devalk.nl

HAFTUNGSAUSSCHLUSS

Diese Angaben erfolgen nach bestem Wissen, können jedoch nicht garantiert werden.



CLASSIC SAILING YACHT

ALLGEMEIN

Modell	CLASSIC SAILING YACHT
Typ	Segelyacht
Rumpflänge (m)	14,50
Breite (m)	4,00
Tiefgang (m)	2,60
Tiefgang min (m)	1,20
Baujahr	1942
Lancierung	<p>History The 'Mees Toxopeus' is a design by J.P.G. Thiebout. Construction started in 1942 at the Schouten shipyard in Muiden. The original drawings can be found in the National Maritime Museum in Amsterdam. Construction was halted later in 1942 because of the war. Probably the hull was then sunk in Zaandam. After the liberation, the hull was lifted and bought by the Niestern shipyard in Delfzijl, and transferred to Delfzijl or Groningen. In the early 50s, the ship was completed there under the supervision of Mees Toxopeus himself. He received it on loan from Niestern and sailed under the name 'Unie'. Over the years, various improvements have been made to hull, equipment and rigging, mostly at Jachtwerf Stofberg in Leimuiden and later Enkhuizen. The current rigging from 1985 is a design by Willem de Vries Lentsch. Hull and deck were sandblasted in 2000-2001. In 2006-2008, a major refit was carried out at Ventis in Enkhuizen according to design and under project management by Olivier van Meer. The work list consisted of: installation of a new centreboard and centreboard case, new aluminum cockpit, new Nanni diesel engine, completely new interior and installations, new navigation equipment. In 2012 and 2015 the sails were improved and enlarged. The sail area is now 100 m2. The hull was repainted in 2023, deck and superstructure in 2025. In the last year, the gearbox has also been overhauled and the engine mounts renewed.</p>
Werft	Schouten/Muiden, De Unie/Groningen
Land	Niederlande
Entwerfer	J.P.G. Thiebout
Gewicht (t)	16
Ballast (Ton)	Blei in Stahl - 1500 kg in the keel



CLASSIC SAILING YACHT

Rumpfmateri	Stahl
Rumpffarbe	Weiß
Haut-dicke Rumpf (mm)	Approx. 4 mm
Rumpfform	Rundspant
Art Kiel	Kielschwerter
Material Aufbauten	Stahl
Stossliste	Stahl
Deckmaterial	Stahl
Deck Finish	Antirutsch Farbe
Deck Finish Aufbauten	Antirutsch Farbe
Pflicht Bedeckung	Teak - New aluminium cockpit with teak finish (2006-2008)
Antifouling (Jahr)	2026
Decks Luke	5x
Bullauge	ja
Treibstofftank (Liter)	Kunststoff - Approx. 340 litre in two tanks
Treibstofftank 2 (Liter)	Stahl - Approx 8 ltr stainless steel tank for the diesel heater.
Füllstandsanzeige (Treibstofftank)	VDO
Trinkwassertank (Liter)	Kunststoff - Approx. 420 litre in two tanks
Füllstandsanzeige (Trinkwasser)	VDO
Fäkaelien Tank (Liter)	Edelstahl - Approx. 85 litre
Füllstandsanzeige (Fakaelientank)	Only an alarm, no level indicator
Radsteuerung	hydraulik
Aussen Steuerung	ja
Not-Pinne	ja
Weitere Info Rumpf	Paintwork of the hull in 2023 and superstructure in the winter 2025-2026.
Weitere Info	Dimensions: The hull over the deck is approx. 12.00 x 3.90m without rudder, rubbing strake and bowsprit. The seller estimate that the total length is around 14.50m. and the beam around 4.00m.
Weitere Info	The minimal draft will be around 1.20m. and the draft with the keel down around 2.60m.



UNTERKUNFT

Kabinen	1
Kojen	6
Innen	Mahagoni -New wooden interior from 2006-2008 designed by Olivier Vermeer.
Einteilung	Storage in the front, Bathroom with toilet and washbowl, cabin with two single berths, saloon with L-shaped settee and I shaped settee, galley, navigationdesk and single berth
Fussboden	Holz
Offenen Cockpit	ja
Salon	ja
Heizung	Kaminofen Diesel - Newport by Dickinson
Kartentisch	ja
Umbaubar Koje	The I-shaped settee van be converted into a bunkbed
Tür zum Cockpit	ja
Kombüse	ja
Arbeitsfläche	ja
Spülbecken	Edelstahl - Single stainless steel sink
Herd	Gas - Force 10, 3-burner cooker
Ofen	Force 10
Kuhlschrank	ja
Warmwasser System	220V + Motor - Webasto 60 liter
Wasserdruck System	elektrisch - Jabsco Par-Max 1.9
Hand und/oder Fusspumpe	ja
Eignerkabine	Zwei Einzelbetten
Kleiderschrank	ja
Badezimmer	getrennt
Toilet	ja
Toilette System	handbetrieb - Lavac Manual toilet
Handwaschbecken	ja
Weitere Info	ja



MASCHINEN

Motoranzahl	1
Marke	Nanni
Typ	5.280HE
PS	62
kW	45.63
Kraftstoffart	Diesel
Installiert im Jahr	2007
Kühlungssystem Motor	geschlossenen Kielkühlung
Antrieb	Schraubenwelle
Motor bedienung	Seilzug Kabel - Kobelt
Gewende getriebe	PRM Newage Coventry, overhaul 2025.
Exhaust	trocken
Wellen Drucklager	ja
Propeller Typ	Segelstellung
Propellerblätter	4 bladed
Material Propellerwelle	Edelstahl
Propellerwelle schmierung	Wasser
Hand Bilgenpumpe	ja
Elektrische Bilgenpumpe	ja
Starterbatterie	1 x 90ah
Versorgungsbatterie	2 x 230 ah
Batterie Monitor	Victron BMV-600 monitor
Batterie Ladegerat	2x Victron Centaur 12-50
Umwandler	1x Victron Phoenix inverter 12/1200
Landstrom	mit Kabel
Weitere Info	2 x redtop batteries for the electric engine of the centerboard.
Weitere Info	1 x 12V/100A alternator and 1 x Mastervolt 12V 130A alternator on the main engine.
Weitere Info	ja



NAVIGATION

Kompass	Classic liquid compass
Tiefenanziege	Simrad IS12 (inside)
Tiefenanziege/Logge	Simrad IS20 depht sounder and log
Windlupe anzeige	Simrad IS20
UKW	Simrad RS82
Autopilot	Simrad AP24
GPS	Furuno GP-32
Radar/GPS/Plotter	Furuno Navnet VX2
Wetter Empfänger	Radiotelex Weatherman
AIS Transceiver	Furuno AIS
Epirb	GME epirb (need service)
Navigation Beleuchtung	ja

AUSRÜSTUNG

Spritzverdek	ja
Winterplane	A complete winter cover over the complete boat with wooden frame.
Badeleiter	Stahl - On the rudder
Heckdusche	ja
Anker	Klip anchor 40 KG
Ankerkette	Approx. 70 meter
Anker 2	CQR 65 LBS
Ankerwinde	handbetrieben - Jac. Admiraal B.V. machinefabriek
Deckwasche	ja
See Reling	Draht/Seil
Zupackenschiene (aufbauten)	Teak
Seiten-Einstieg Seereling	ja
Fenderkissen	ja
Festmacher	ja
Radio-CD Spieler	Sony



Lautsprecher im Pflicht	ja
Lautsprecher im Salon	ja
Uhr - Barometer	Clock and barometer
Weitere Info	Spade anchor 20KG

RIGG

Rig	Kutter
Stehendes Gut	Drahtseil
Material Mast	Holz - Building mast 1985, regulair checked and maintained.
Salings	1x
Mastlege Vorrichtung	Manual
Großsegel	Approx. 39,5 m2 (2015)
Fock	Outer Jib, approx. 39,5 m2 (2012)
Fock I	Approx. 21 m2 (2014)
Fock II	ja
Sturmfock	ja
Weitere Info	The current rigging is designed after a design of Willem de Vries Lentsch in 1985 and in 2012 and 2015 modified. The wooden mast and boom are built in 1985 and constandly maintained and checked. The last check was in 2025 by Jachtwerf Stofberg in Enkhuizen. The rigging is checked by the owner everytime when the vessel went into the water.
Weitere Info	2 x Barbarossa 46.2 winches, 2 x Lewmar 54 winches.



CLASSIC SAILING YACHT



CLASSIC SAILING YACHT



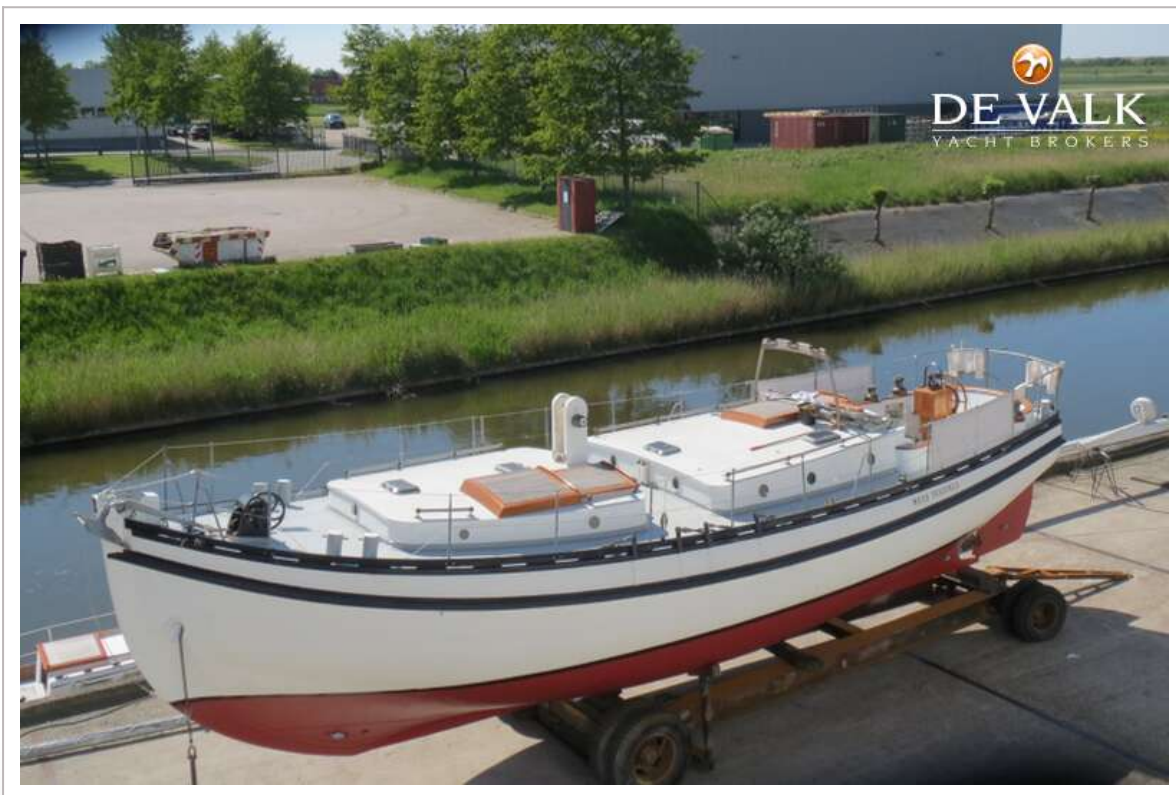
CLASSIC SAILING YACHT



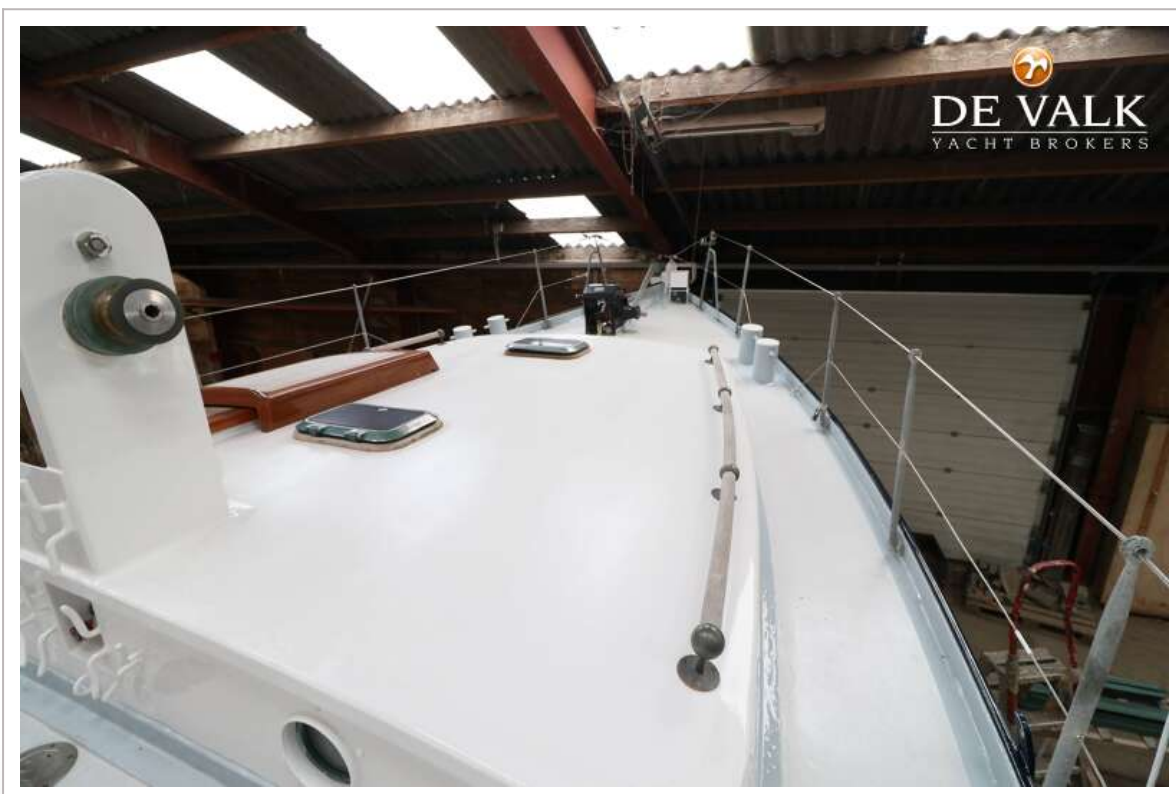
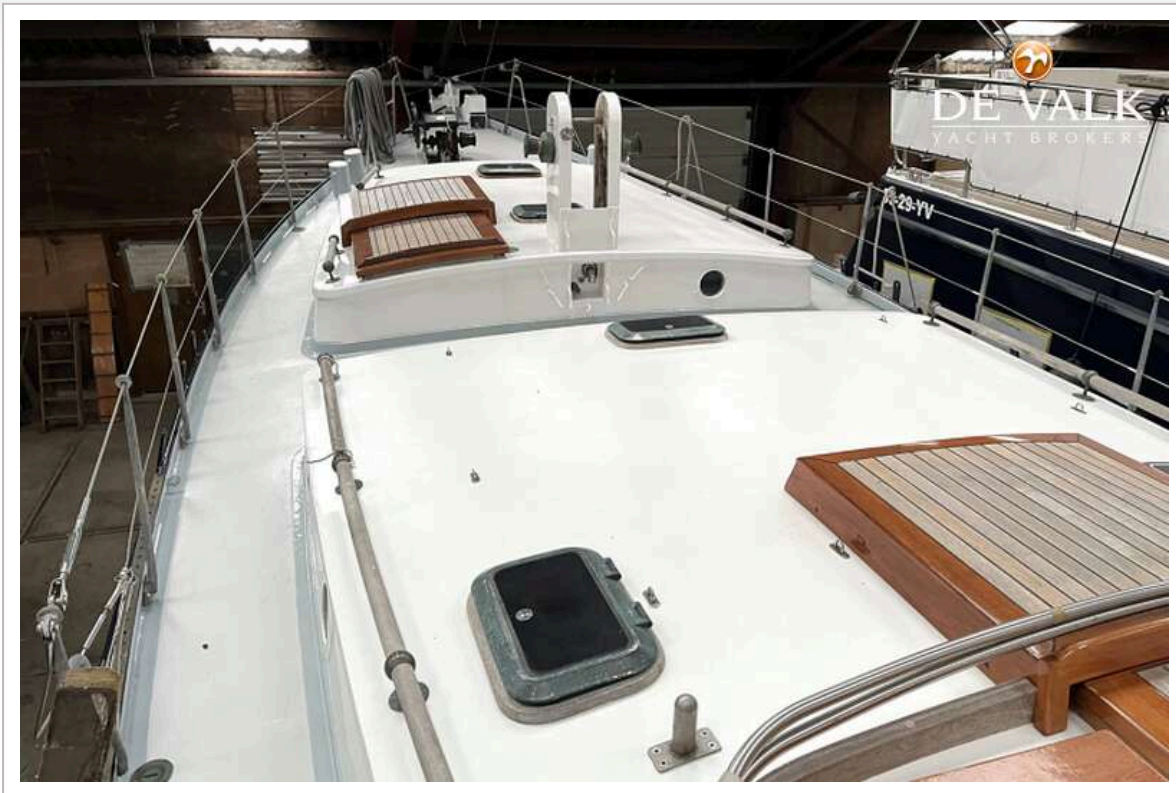
CLASSIC SAILING YACHT



CLASSIC SAILING YACHT



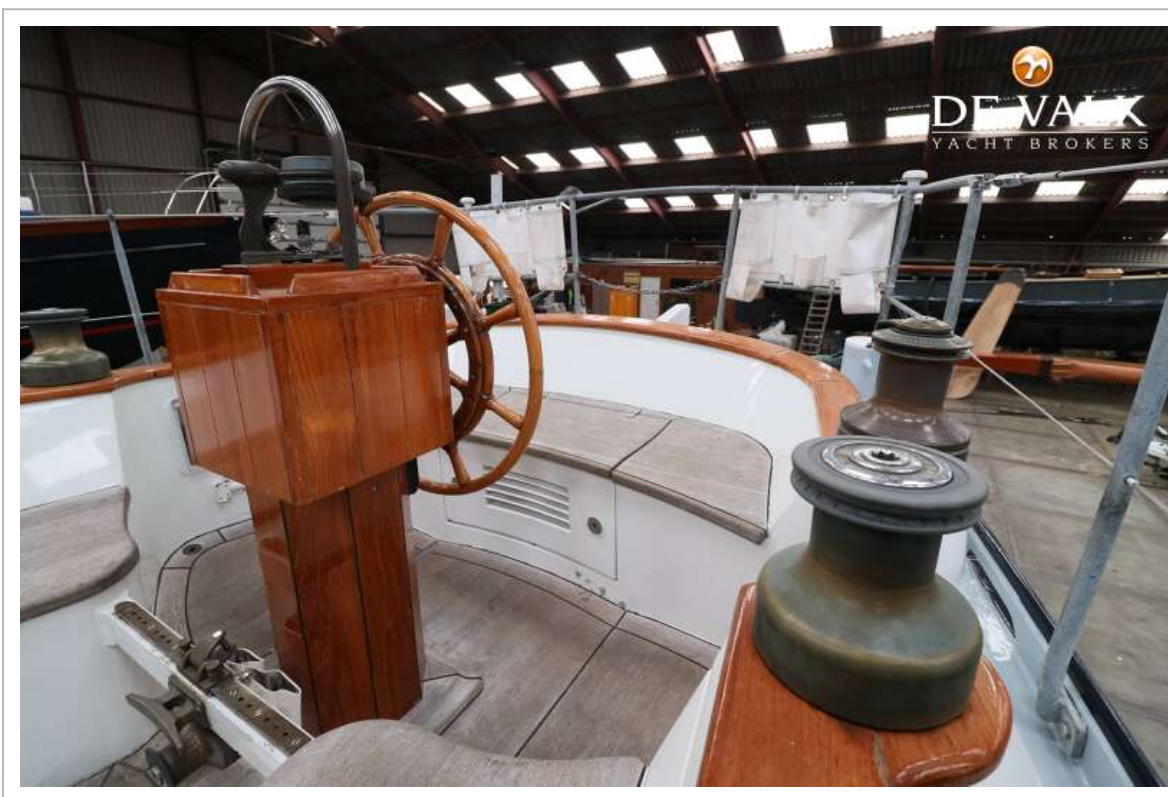
CLASSIC SAILING YACHT



CLASSIC SAILING YACHT



CLASSIC SAILING YACHT



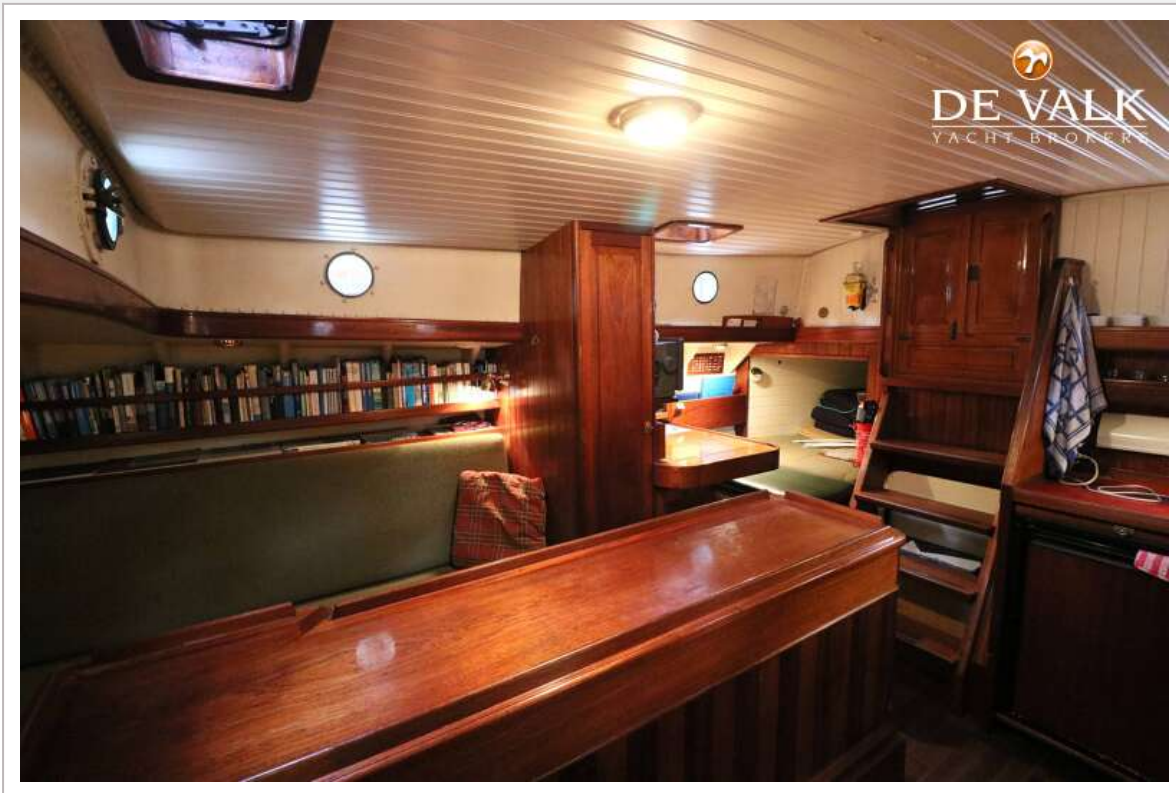
CLASSIC SAILING YACHT



CLASSIC SAILING YACHT



CLASSIC SAILING YACHT



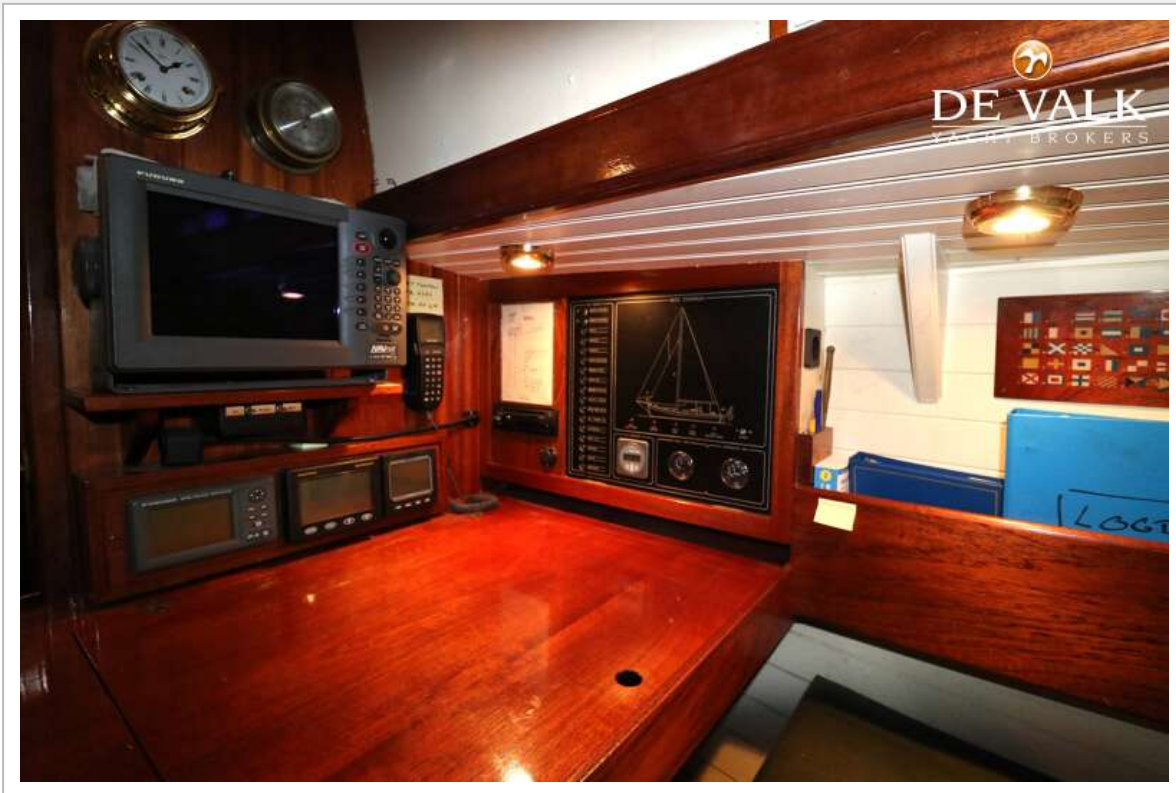
CLASSIC SAILING YACHT



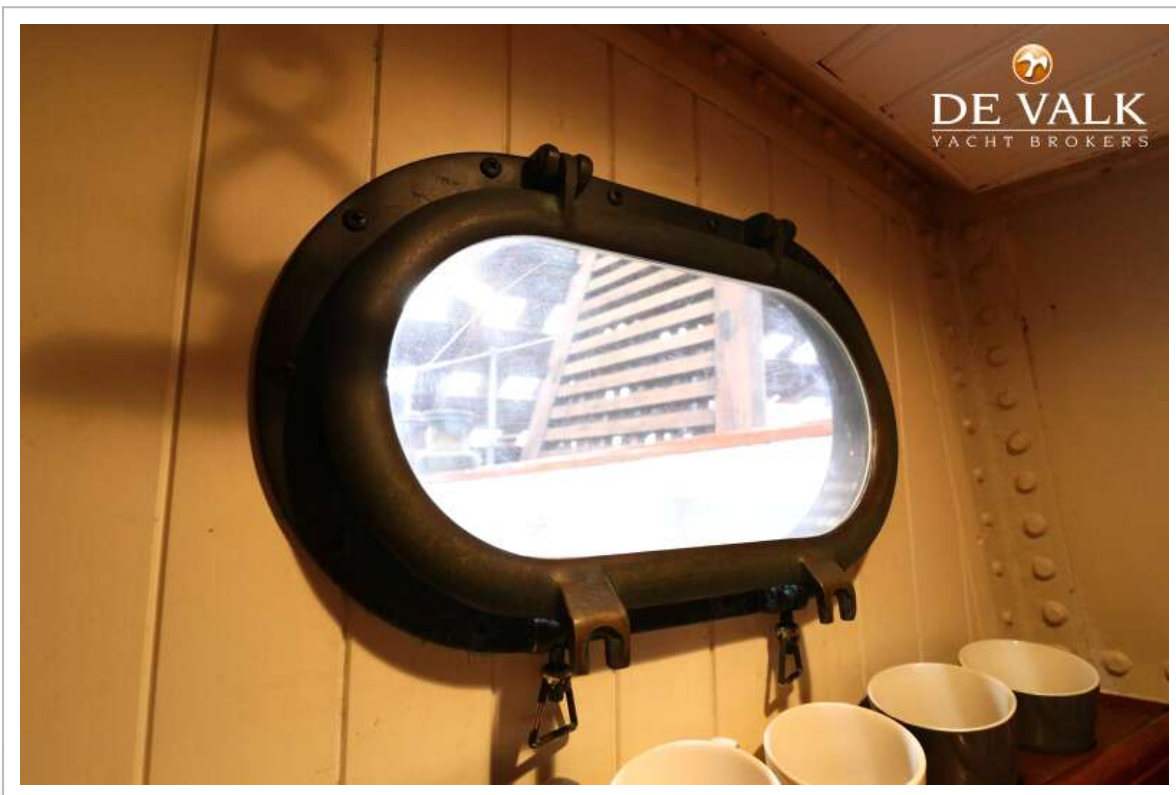
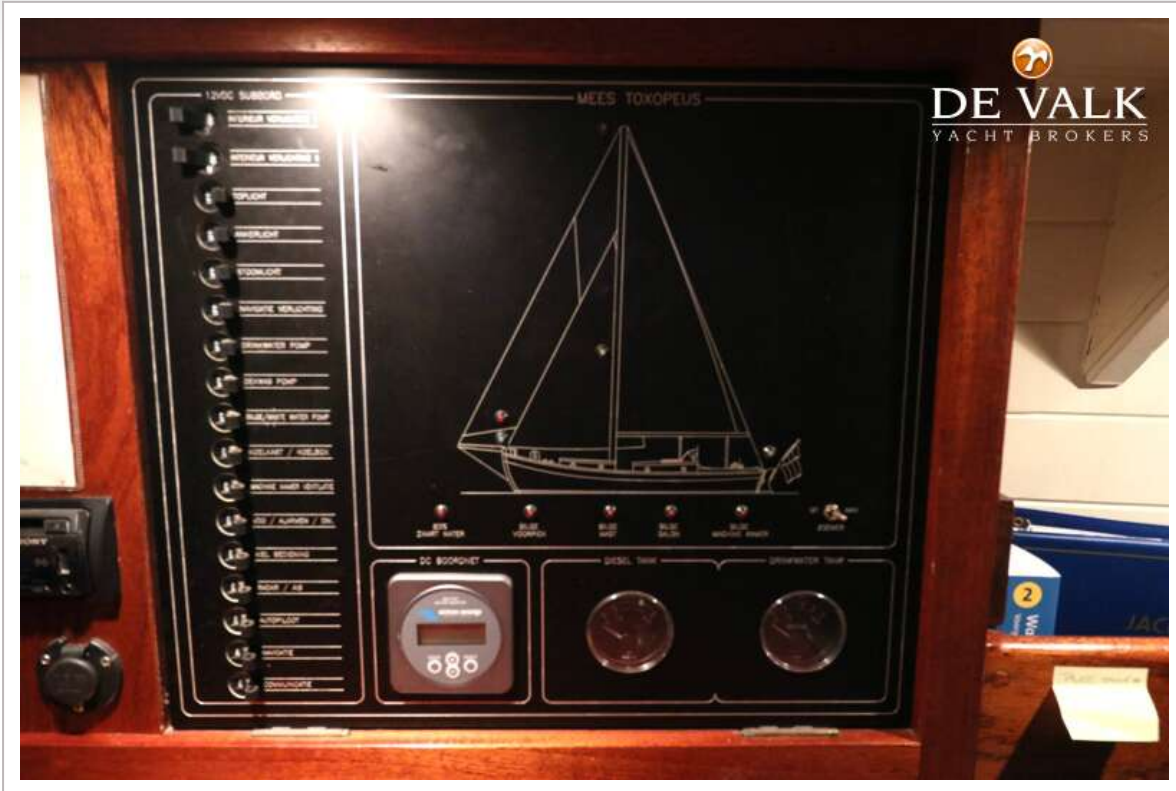
CLASSIC SAILING YACHT



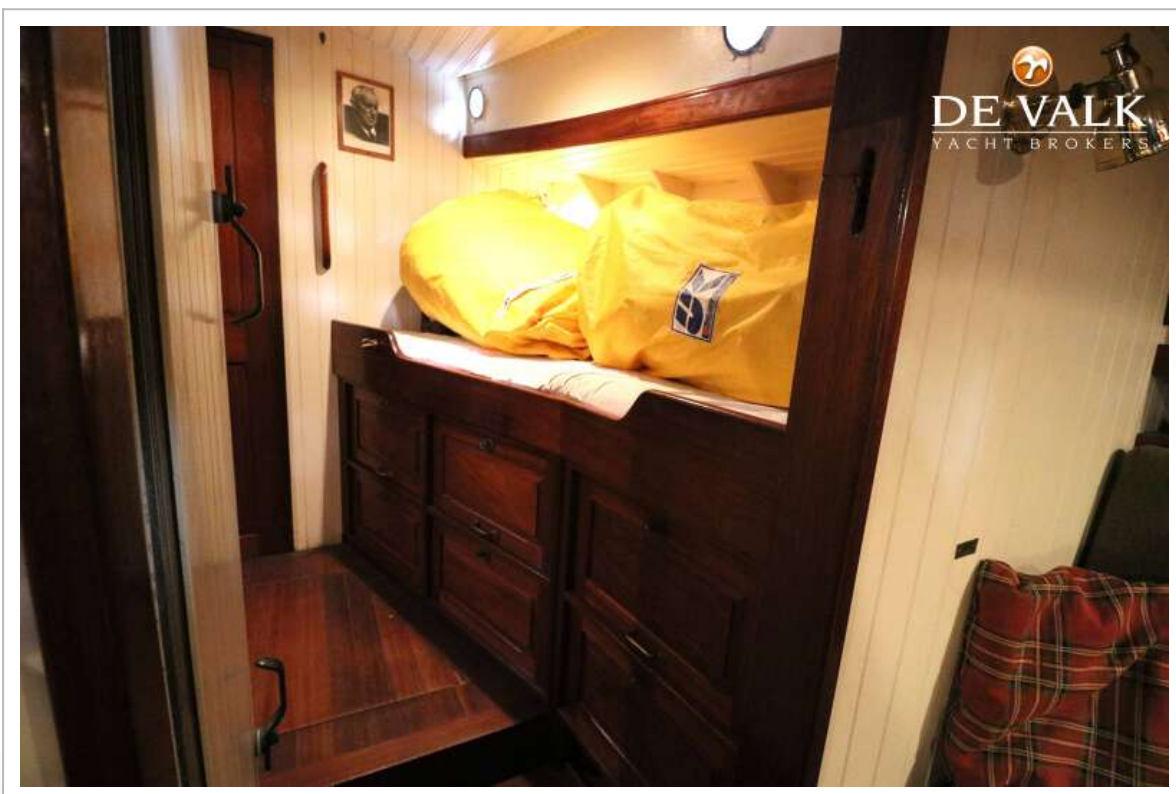
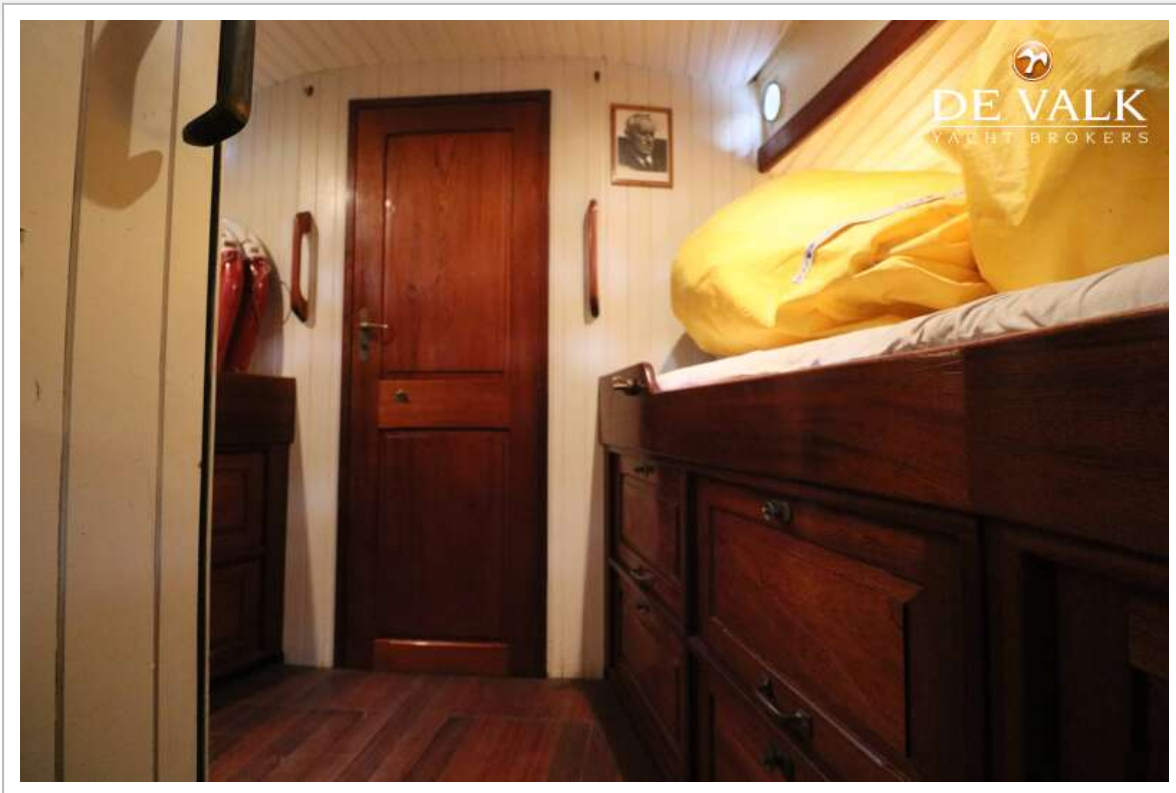
CLASSIC SAILING YACHT



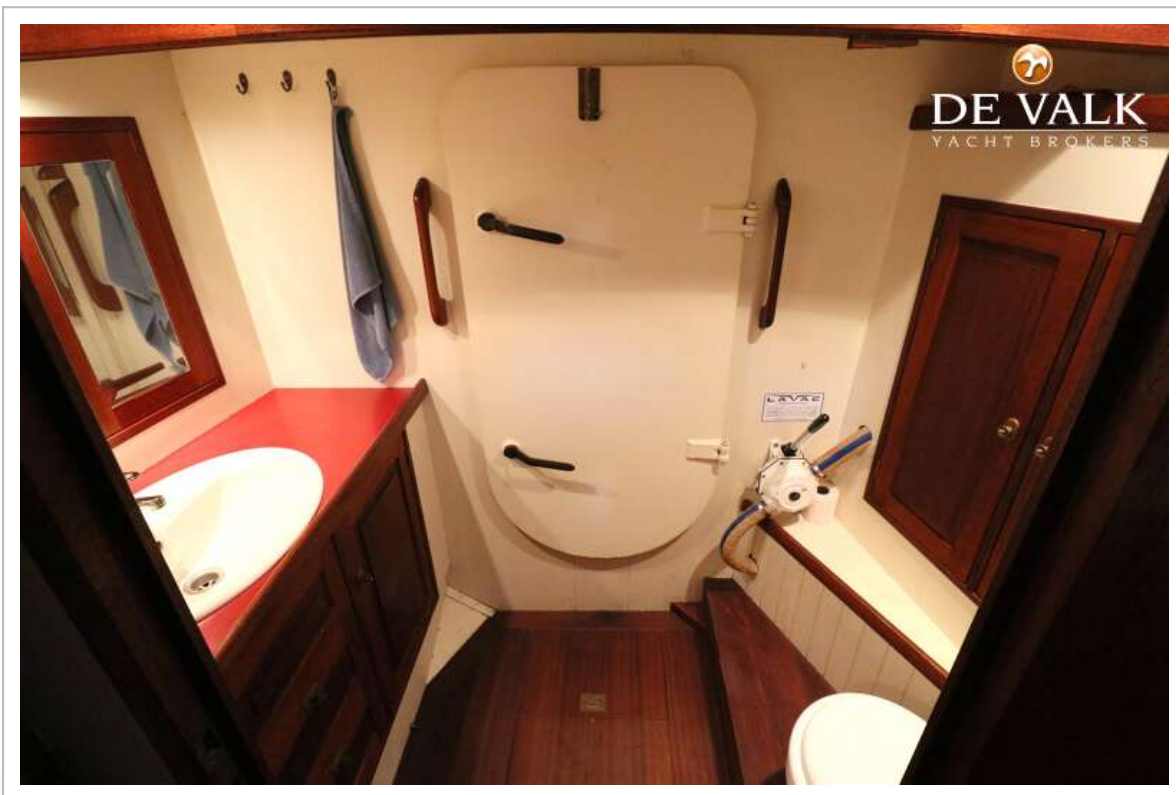
CLASSIC SAILING YACHT



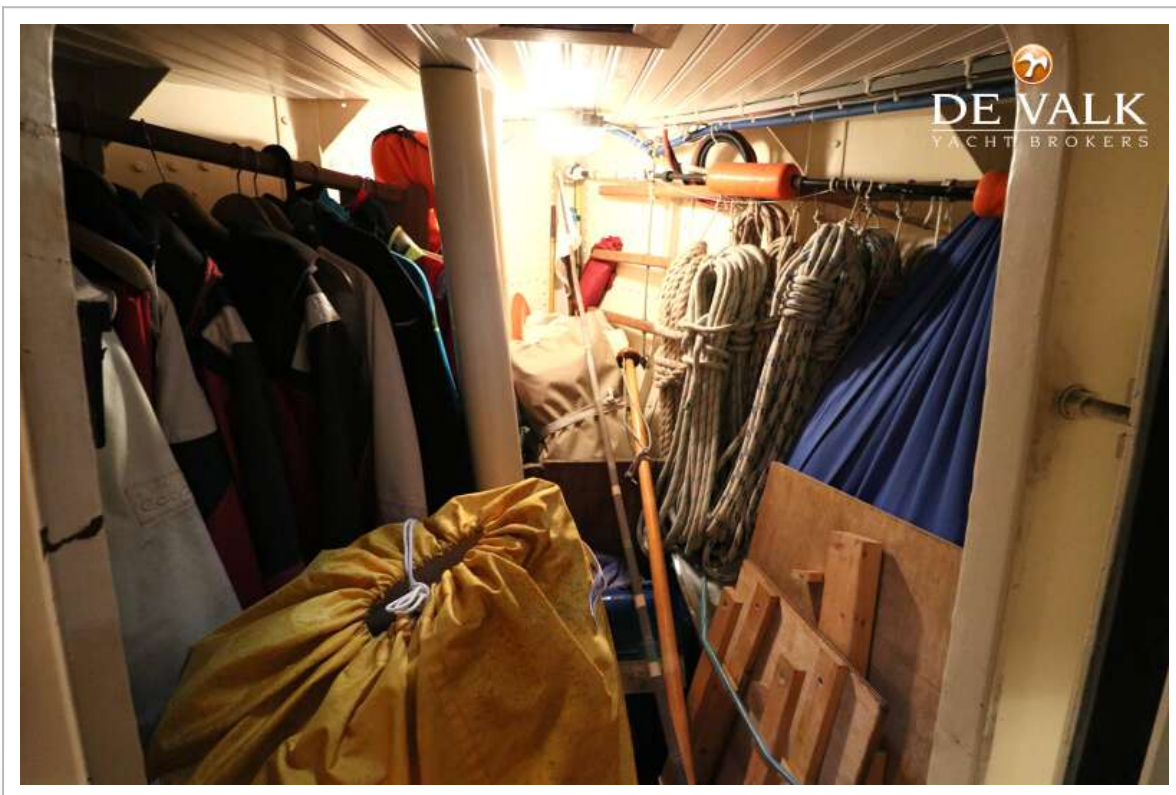
CLASSIC SAILING YACHT



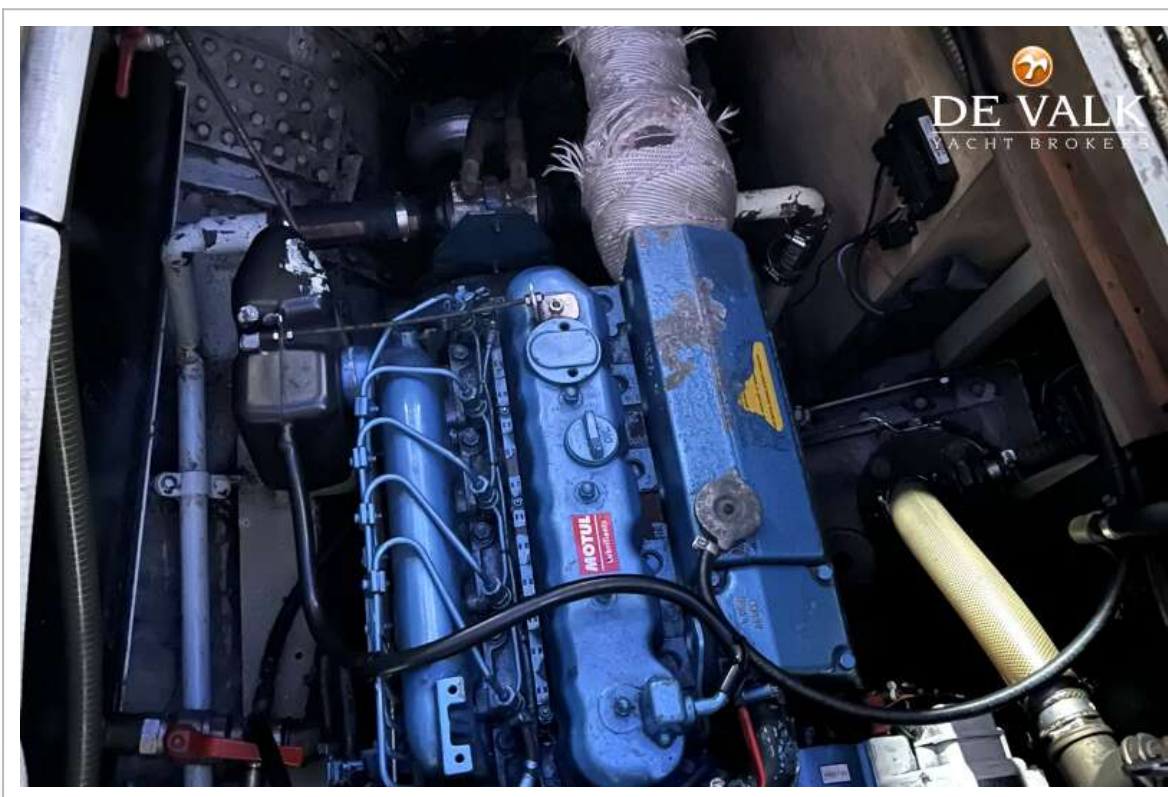
CLASSIC SAILING YACHT



CLASSIC SAILING YACHT



CLASSIC SAILING YACHT



CLASSIC SAILING YACHT

