



DE VALK
YACHT BROKERS



SWEDEN YACHTS 50



DE VALK
YACHT BROKERS

KOMMENTARE DES MAKLERS

This Sweden 50 is an extensively and recently refitted Swedish pedigree oceangoing yacht, combining performance with elegance, comfort and safety. She has been meticulously prepared by naval architect/superyacht refit specialist owner for a family world cruise. Energy and fresh water independent, new sails, new standing rigging, fully refurbished teak deck, shallow draft wing keel, long list of new equipment and upgrades. Powerful Volvo Penta 140hp engine with Gori overdrive propeller, air conditioning, bow thruster, electric genoa furler and genoa winches. This Sweden 50 is ready to go.

Eric Lamers

TECHNISCHE DATEN

Maße	15.25 x 4.35 x 2.00 (m)	Werft	Sweden Yachts
Baujahr	1990	Kabinen	3
Material	GFK	Kojen	9
Motor(en)	1 x Volvo Penta TMD31b diesel	PS/kW	140.00 (PS), 103.04 (kW)
Angebotspreis	€ 239.000 (MwSt. Bezahlt)	Liegeplatz	beim Verkaufsbüro

KONTAKT

Verkaufsbüro	De Valk Antibes	Telefon	+33 492 91 0202
Adresse	2, Avenue de Verdun 06600 Antibes FR	E-Mail	antibes@devalk.nl

HAFTUNGSAUSSCHLUSS

Diese Angaben erfolgen nach bestem Wissen, können jedoch nicht garantiert werden.



SWEDEN YACHTS 50

ALLGEMEIN

Modell	SWEDEN YACHTS 50
Typ	Segelyacht
Rumpflänge (m)	15,25
Wasserlinienlänge (m)	12,60
Breite (m)	4,35
Tiefgang (m)	2,00
Stehhöhe (m)	1,94
Baujahr	1990
Werft	Sweden Yachts
Land	Schweden
Entwerfer	Peter Norlin/Jens Ostman
Gewicht (t)	14,5
Ballast (Ton)	Cast antimony lead keel 6t
CE Norm	A
Rumpfmateri al	GFK
Rumpffarbe	White with grey decorative lines
Rumpfform	Rundspant
Art Kiel	Flugelkiel
Material Aufbauten	GFK
Deckmaterial	GFK
Deck Finish	Teak (recaulked and fully refurbished 2024)
Deck Finish Aufbauten	gemalt
Pflicht Bedeckung	Teak (recaulked and fully refurbished 2024)
Antifouling (Jahr)	Last haul-out 2024, scheduled haul-out for Spring 2025
Dorado Belufter	Vetus x 3
Fenster Einfassung	Aluminium Hard anodised
Fenster Material	Sicherheitsglas
Bullauge	Aluminium All hatches refurbished with new seals and lenses 2024
Isolation	Sandwich cored hull and deck for anti-condensation
Treibstofftank (Liter)	Edelstahl 2 stainless total 350 lt



Füllstandsanzeige (Treibstofftank)	VDO
Trinkwassertank (Liter)	3 stainless steel total 700lt
Füllstandsanzeige (Trinkwasser)	VDO
Fäkaelien Tank (Liter)	Edelstahl 1 stainless steel 60lt
Füllstandsanzeige (Fakaelientank)	Sight tube level indication
Fäkaelien Tankablauf	Deck Absaugstützen
Radsteuerung	Kabelsteuerung On anodised aluminium quadrant
Not-Pinne	Ready for emergency installation with pulley control set-up

UNTERKUNFT

Kabinen	3
Kojen	9
Innen	Mahagoni
Fussboden	Teak and holly
Standhöhe Salon (m)	2m
Heizung	Reverse cycle air conditioning
Klima Anlage	Klima mit Ruckzyklus
Kartentisch	Large chart table/navigation station
Kombüse	ja
Arbeitsfläche	Corian countertops in galley and bathrooms
Spülbecken	Corian sinks in galley and bathrooms
Herd	Gas 4-bumer Techimpex + induction top when on shore power
Ofen	Gas
Dunstabsauge	ja
Kuhlschrank	1 x large top load, 1 x day fridge with freezer compartment
Warmwasser System	220V + Motor
Wasserdruck System	Electrical central pressure pump
Hand und/oder Fusspumpe	Foot pump for both fresh water and sea water in galley
Eigenerkabine	Double bed
Länge Bett (m)	2.00m



SWEDEN YACHTS 50

Kleiderschrank	hängend und Schubladen 2 x hanging wardrobes, 2 x large drawers under bed
Badezimmer	Ensuite with shower section curtained off from rest of bathroom
Toilet	Ensuite
Toilette System	Manual toilet in master cabin bathroom
Handwaschbecken	ja
Gästekabine 1	Double bed
Länge Bett (m)	2.00m
Kleiderschrank	Schubladen und Regale Hanging and multiple lockers
Badezimmer	En suite, shared with other aft cabin each with own access door
Toilette	En suite
Toilette System	Electric going to holding tank/overboard via 3-way valve
Dusche	En suite, shared with other aft cabin each with own access door
Gästekabine 2	Double bed + small bunk bed
Länge Bett (m)	2.0m
Kleiderschrank	Schubladen und Regale Hanging and multiple lockers
Badezimmer	En suite, shared with other aft cabin each with own access door
Toilette	En suite
Toilette System	Electric going to holding tank

MASCHINEN

Motoranzahl	1
Marke	Volvo Penta
Typ	TMD31b
PS	140
kW	103.04
Kraftstoffart	Diesel
Installiert im Jahr	1990
Höchstgeschwindigkeit (Kn)	8.5
Marschgeschwindigkeit (Kn)	6.5-7
Reichweite (nm)	350



SWEDEN YACHTS 50

Kühlungssystem Motor	Freshwater heat exchanger (cleaned & anode changed 2024)
Antrieb	Schraubenwelle
Motor bedienung	Bowden cable
Bugschraube	Electric Lewmar 8kW with dedicated batteries and 50A charger
Exhaust	Watercooled, new exhaust cooling elbow 2022
Wellen Drucklager	Python Drive thrust bearing/flexible coupling new 2022
Propeller Typ	Gori folding with overdrive
Propellerblätter	3
Material Propellerwelle	Duplex stainless steel new 2022
Propellerwelle schmierung	Grease through Volvo Penta stern gland 2022
Hand Bilgenpumpe	2x fully functioning: 1 interior, 1 exterior cockpit
Elektrische Bilgenpumpe	1x Jabsco
Bilge Alarm	Automatic level switch
Elektrische Anlage	24V + 220V on shore power/generator
Generator	Paguro 4kW, wet exhaust
Betriebsstunden Generator	201 hrs March 2025
Starterbatterie	Main engine 180Ah lead acid heavy duty
Versorgungsbatterie	AGM 4x150Ah new 2023
Generatorbatterie	1x12V 2021
Bugschraubebatterie	Dedicated battery bank
Batterie Monitor	Victron Smartshunt and Victron BMV712Smart battery monitoring s.
Batterie Ladegerät	Mastervolt Chargemaster Plus 60A (new 2022)for house batteries
Umwandler	Mastervolt 500W
Batterie Ladegerät/Umwandler	Victron Buckboost 2023 for engine alternator charge regulation
Solar panele	4 awning integrated Solbian SR155 solar panels 100% energy needs
Landstrom	mit Kabel
Wasserbereiter	Spectra Cape Horn Extreme 330 24V 55lt/hr,New membrane 2023



NAVIGATION

Kompass	Suunto + B&G Fluxgate
Tiefenanziege	B&G
Logge	B&G
Windlupe anzeige	B&G
UKW	B&G V60-B with integrated GPS/Class B AIS new 2022
Portabel UKW	B&G H-60 new 2022+ Standard horizon handheld with integrated GPS
Autopilot	B&G
Ruderwinkel Anzeige	B&G
Radar	Raymarine 4kW 18" HD Color
Radar/GPS/Plotter	Raymarine Hybrid Touch 12" screen inside, 7" outside
Elektronische Kart(en)	Navionics
AIS Transceiver	B&G H60 VHF integrated AIS transmit/receive
Epirb	Kannad SafePro AIS (with integrated AIS transmitter)
Suchscheinwerfer	Handheld plastimo
Weitere Info	Sailor Compact HF SSB

AUSRÜSTUNG

Spritzverdek	New 2022
Bimini	New 2022/2023 full cockpit area
Sonnenschirm	Between cockpit awning and mast
Cockpit Polster	Sun lounge cushions forward of sprayhood, new 2022
Cockpit Tisch	2 x extensions
Badeplattform	Large custom platform on transom
Badeleiter	Stainless steel swim ladder
Gangway	Multiplex carbon fibre gangway new 2023
Heckdusche	On stern platform
Anker	Lewmar Delta 35kg
Ankerkette	70m
Anker 2	Fortress



Ankerwinde	elektrisch Simpson Lawrence 2023
See Reling	Stainless steel (wires&tensioners new 2023)
Zupackenschiene (aufbauten)	Teak
Seiten-Einstieg Seereling	P&S
Letzte Wartung Rettungsinsel	New 2022
Rettungsboje	ja
Markierboje	ja
Sicherheitsleine auf Deck	Yes and multiple pad eyes for tethers around cockpit
Radar Reflektor	ja
Fenderkissen	New covers 2024
Festmacher	New 2023
Reserve Teilen	Extensive
TV	ja
Radio-CD Spieler	ja
DVD Spieler	ja
Subwoofer	ja
Lautsprecher im Pflicht	ja
Lautsprecher im Salon	ja
Lautsprecher im Kabin	ja
Uhr - Barometer	ja
Feuerloscher	ja

RIGG

Rig	Cutter rig with removable staysail. All new BSI Denmark 2022
Stehendes Gut	Drahtseil
Marke Mast	Selden (removed and fully inspected 2022)
Material Mast	Aluminium (not coated)
Salings	3
Durchelatted großsegel	Elvstrom Full batten 60 sqmt eXRP tri-radial with 3 reefs 2023
Genua	Elvstrom 79.5 sqmt eXRP tri-radial, new 2024.
Rollreffanlage	Electric Bamar furler (with new controller 2024)



Gennaker	North sails, little use
Stagesegel	North Sails 3D Marathon staysail
Stagesegel Rollreflanlage	Karver manual headsail furler
Reff Vorrichtung	Slab reefing, 3 reefs, deep 3rd reef for storm conditions
Achterstag Spanner	Navtec hydraulic (overhaul 2022)
Baumniederhohler	Navtec hydraulic (overhaul 2022)
Primare Schot Winschen	Lewmar 66 electric x2
Sekundaire Schot Winschen	Lewmar 48
Wunsch Schonbezug	New 2023
Spi-Baum	Aluminium
Isolierte Heckstag	New isolators 2022

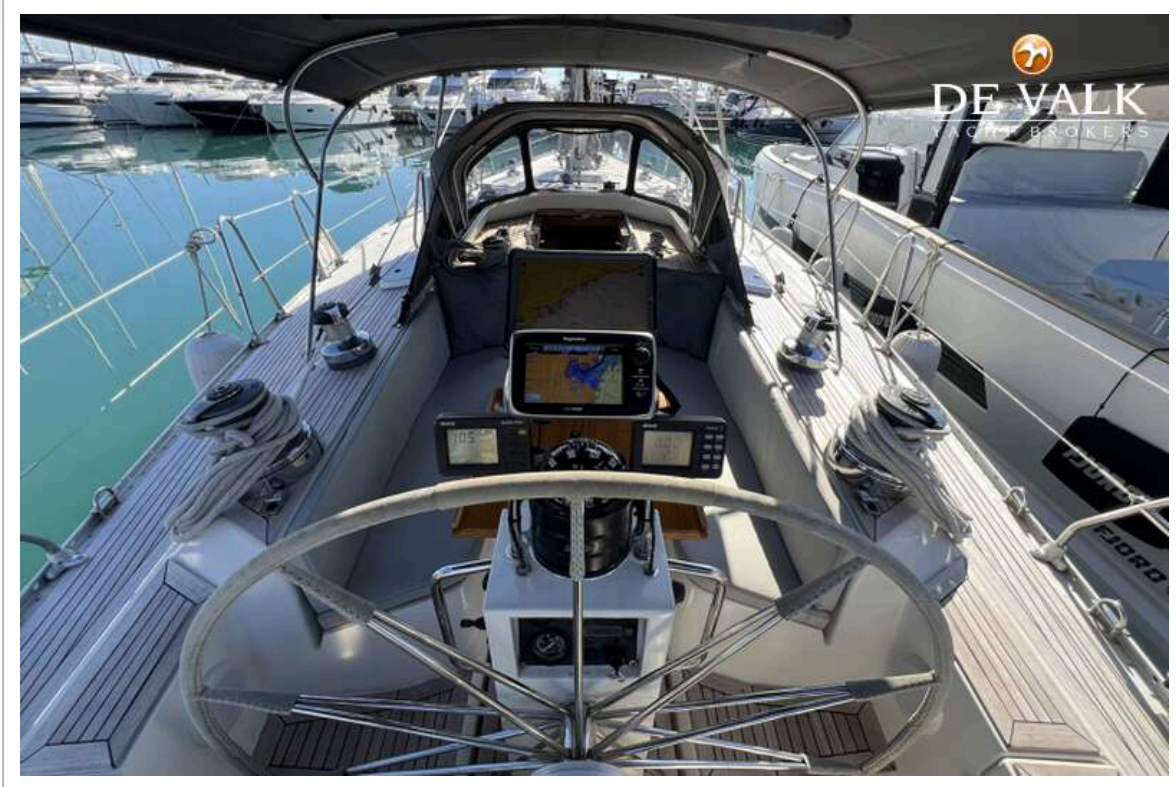






SWEDEN YACHTS 50



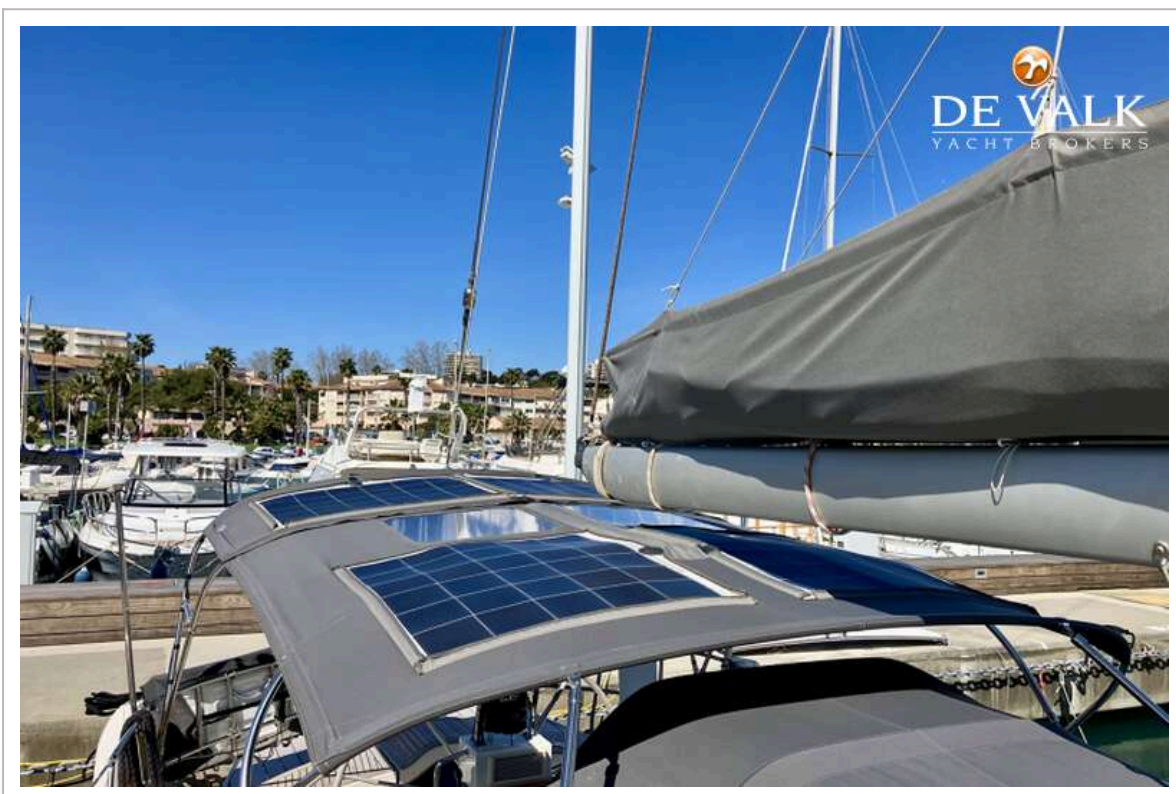


SWEDEN YACHTS 50



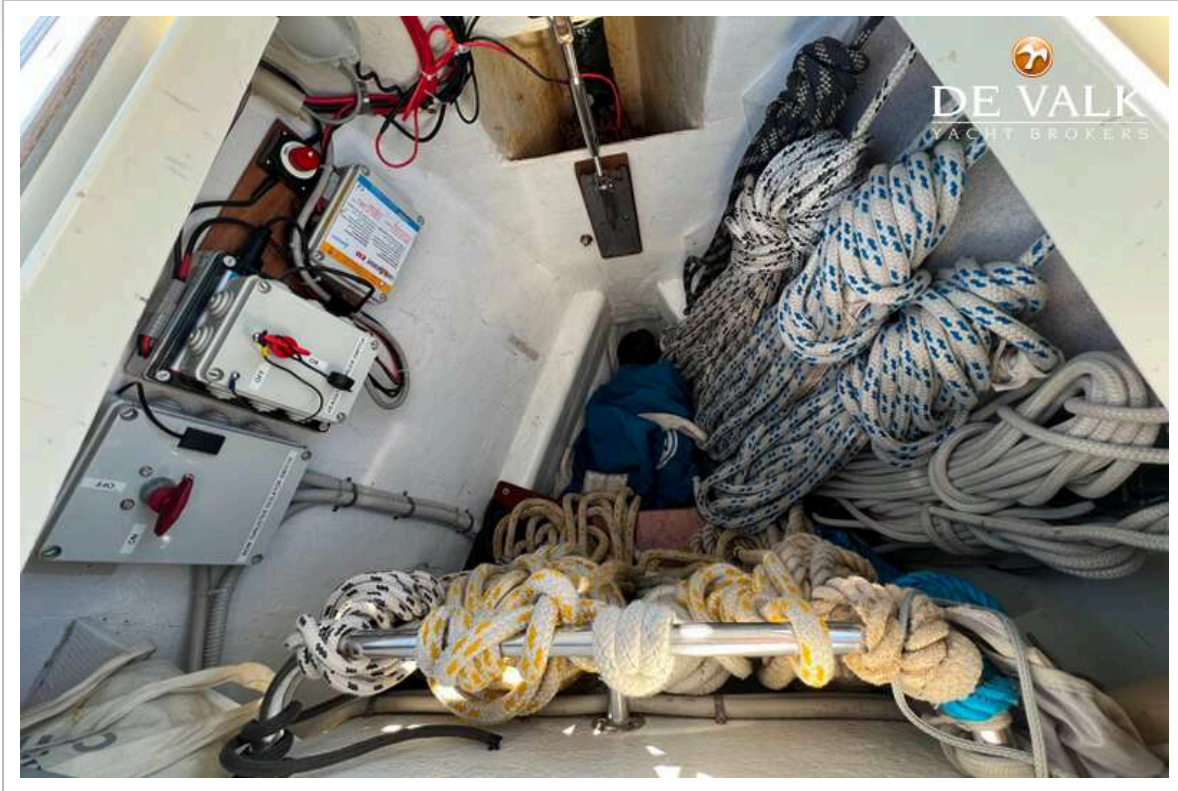
SWEDEN YACHTS 50



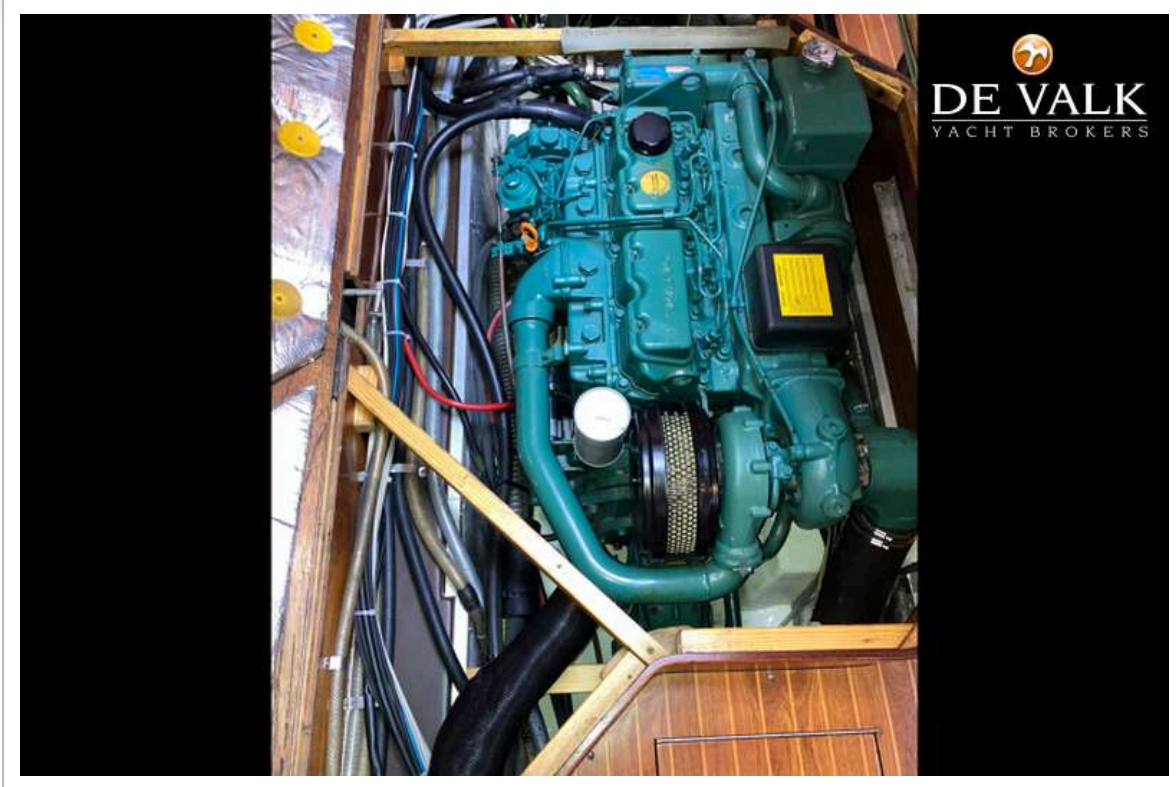


SWEDEN YACHTS 50





SWEDEN YACHTS 50



SWEDEN YACHTS 50



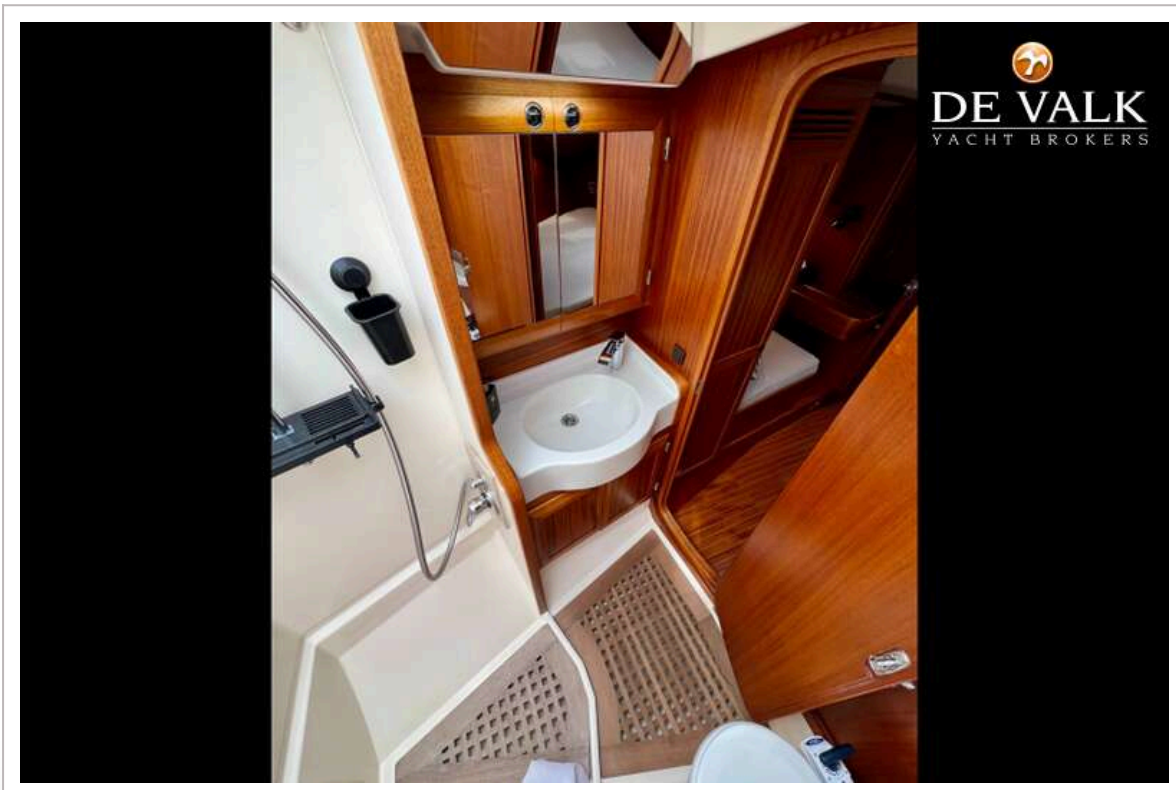
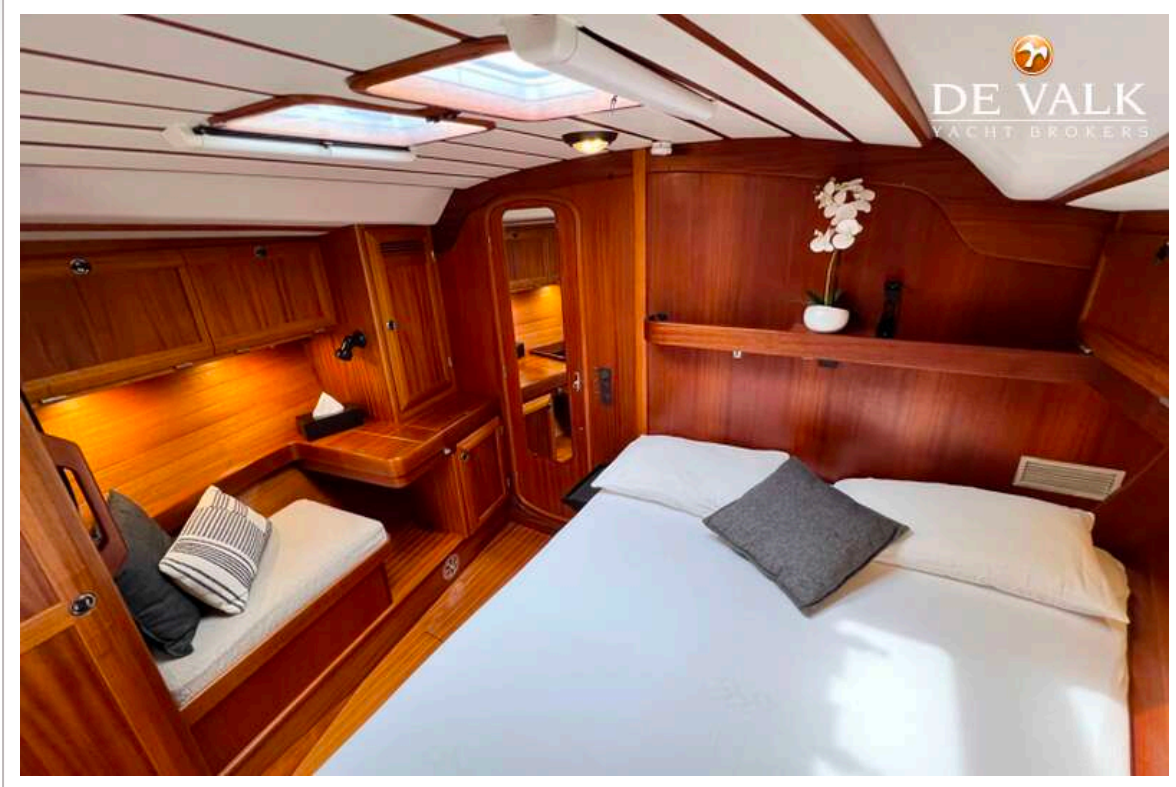
SWEDEN YACHTS 50



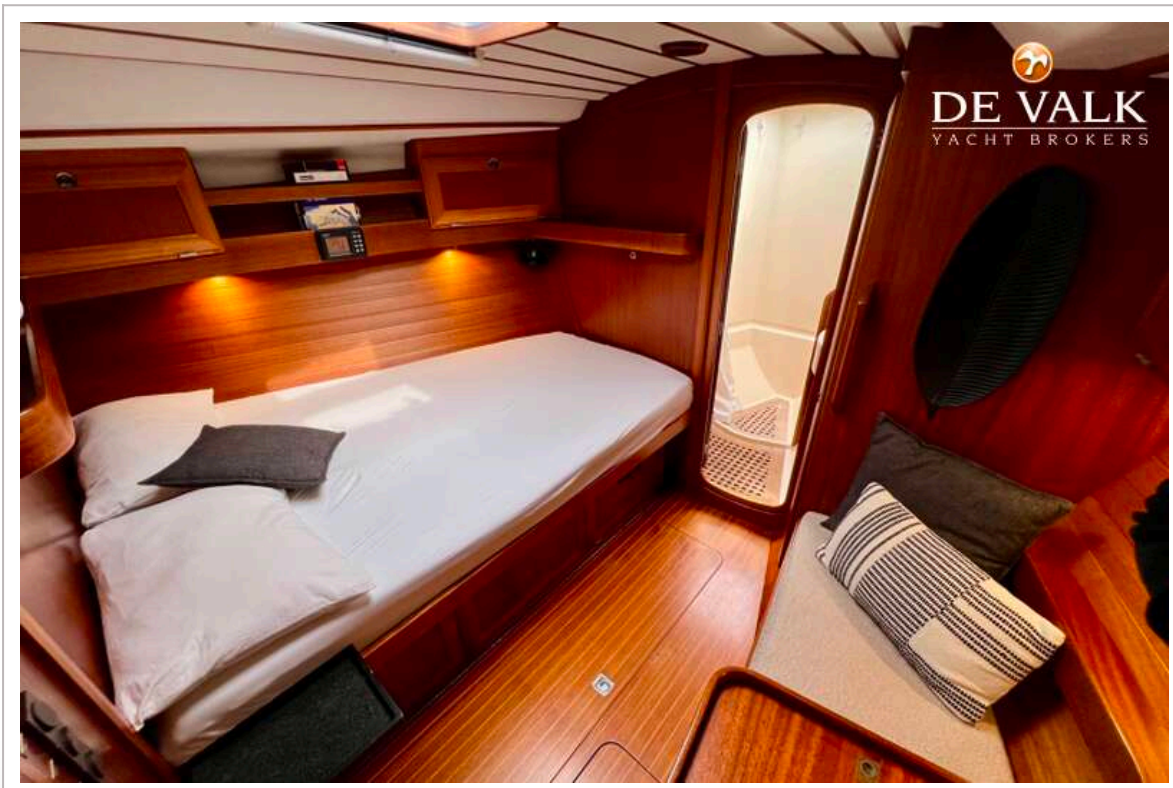
SWEDEN YACHTS 50



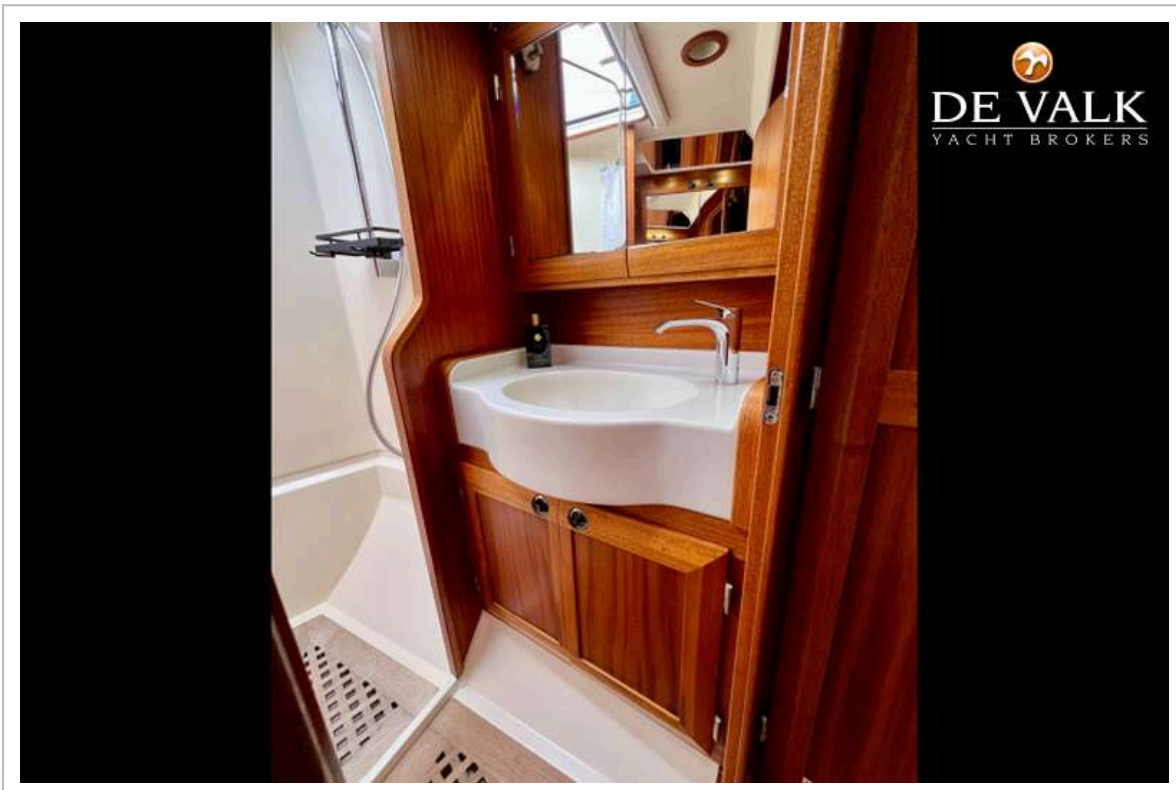
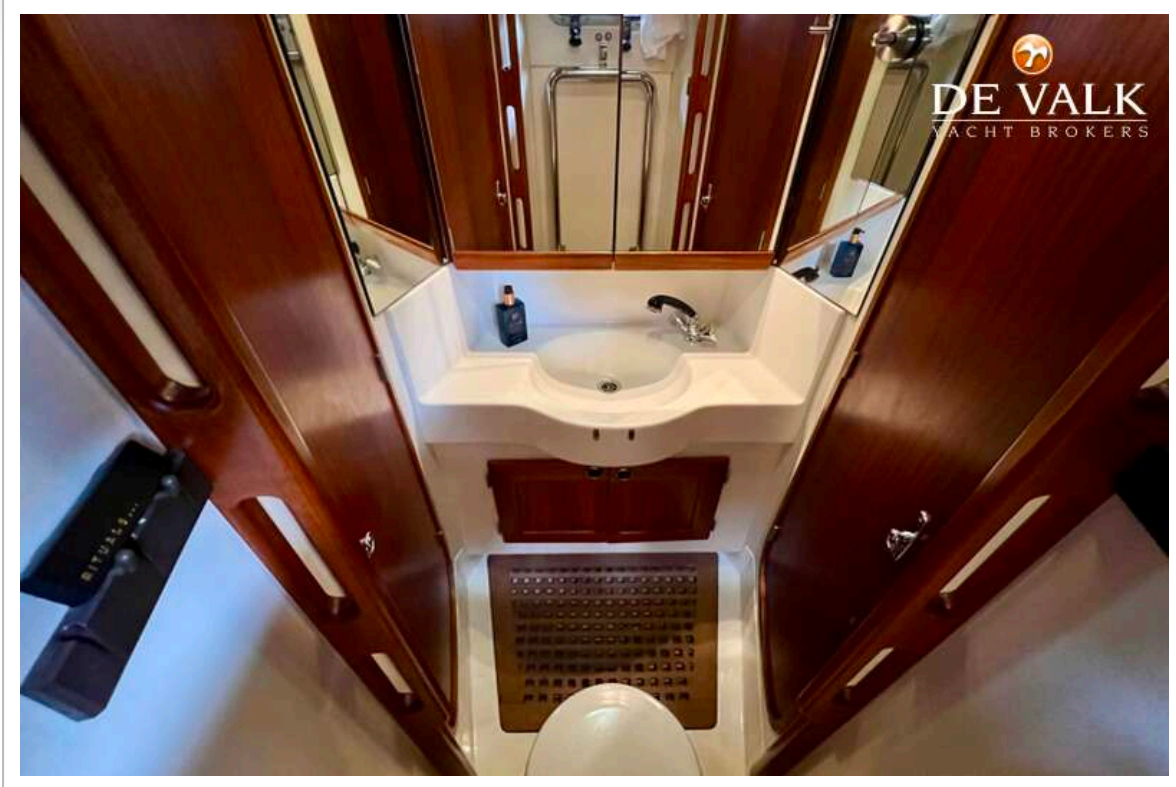
SWEDEN YACHTS 50



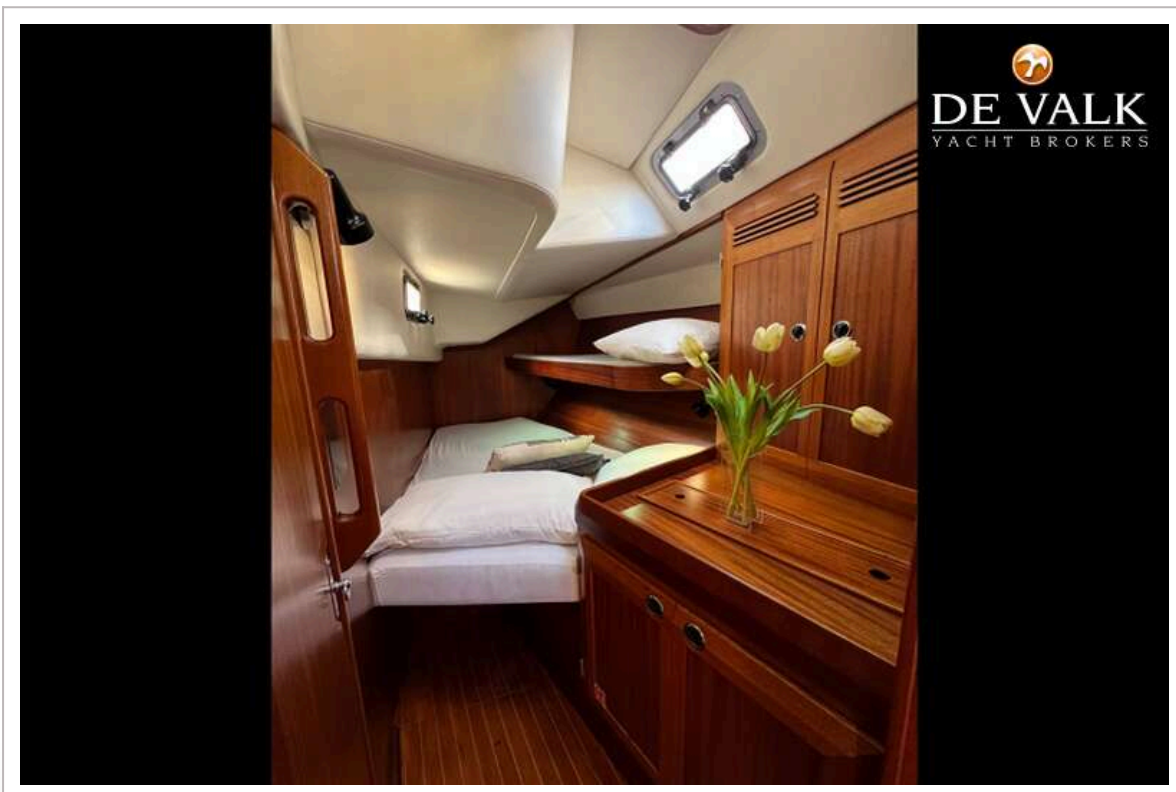
SWEDEN YACHTS 50



SWEDEN YACHTS 50



SWEDEN YACHTS 50



SWEDEN YACHTS 50

