



DE VALK  
YACHT BROKERS



## LAGOON 42



DE VALK  
YACHT BROKERS

## KOMMENTARE DES MAKLERS

This 2024 Lagoon 42 is like new and really stands out with a premium spec built for comfort and freedom at sea. Upgrades include air conditioning, heating, a watermaker, extra fridge/freezer capacity, and two additional berths - perfect for crew, guests or kids. Lagoon's award winning design emphasises sociability: spacious decks, a cockpit to entertain, panoramic windows and four family friendly cabins and four heads. This vessel is a luxurious family cruiser or high yield charter gem. Available now in Palma!

*Oliver Stehula*

## TECHNISCHE DATEN

<b>Maße</b>	12.79 x 7.68 x 1.29 (m)	<b>Werft</b>	Lagoon Yachts
<b>Baujahr</b>	2023	<b>Kabinen</b>	4
<b>Material</b>	GFK	<b>Kojen</b>	10
<b>Motor(en)</b>	2 x YANMAR 4JH57CR SD diesel	<b>PS/kW</b>	2 x 57.00 (PS), 41.95 (kW)
<b>Angebotspreis</b>	€ 589.000 (MwSt. Nicht bezahlt)	<b>Liegeplatz</b>	beim Verkaufsbüro

## KONTAKT

<b>Verkaufsbüro</b>	De Valk Palma	<b>Telefon</b>	+34 971 40 29 11
<b>Adresse</b>	Port. Cala Nova, Avda. Joan Miro, 327 07015 Palma de Mallorca ES	<b>E-Mail</b>	palma@devalk.nl

## HAFTUNGSAUSSCHLUSS

Diese Angaben erfolgen nach bestem Wissen, können jedoch nicht garantiert werden.



## ALLGEMEIN

<b>Modell</b>	LAGOON 42
<b>Typ</b>	katamaran segelyacht
<b>Rumpflänge (m)</b>	12,79
<b>Breite (m)</b>	7,68
<b>Tiefgang (m)</b>	1,29
<b>Baujahr</b>	2023
<b>Lancierung</b>	2024
<b>Werft</b>	Lagoon Yachts
<b>Land</b>	Frankreich
<b>CE Norm</b>	A
<b>Rumpfmaterial</b>	GFK
<b>Rumpfform</b>	Twin hull
<b>Schlingerkielen</b>	Rounded
<b>Material Aufbauten</b>	GRP
<b>Deckmaterial</b>	GRP
<b>Deck Finish</b>	Non-skid
<b>Antifouling (Jahr)</b>	2024
<b>Decks Luke</b>	4 x starboard 4 x port
<b>Flybridge</b>	Raised helm station port side
<b>Flybridge Kuchenbude</b>	Full winter covers NEW 2024
<b>Treibstofftank (Liter)</b>	300L
<b>Treibstofftank 2 (Liter)</b>	300L
<b>Trinkwassertank (Liter)</b>	2 x 300L
<b>Radsteuerung</b>	Chain steering Dynema
<b>Aussen Steuerung</b>	Raised helm station port side

## UNTERKUNFT

<b>Kabinen</b>	4
<b>Kojen</b>	10
<b>Mannschaftskabine</b>	2



<b>Mannschaftscojen</b>	2
<b>Innen</b>	Wood in Alpi Sand
<b>Fussboden</b>	Dark oak
<b>Achterdeck</b>	Entertaining area
<b>Standhöhe Salon (m)</b>	2.30
<b>Heizung</b>	Webasto S-series with cabin My Touch screens
<b>Klima Anlage</b>	Webasto S-series with cabin My Touch screens
<b>Navigation Zenter</b>	In saloon with electronic control panels
<b>Kartentisch</b>	In saloon
<b>Schiebetür zum Cockpit</b>	Yes with tinted glass
<b>Kombüse</b>	Starboard side of saloon
<b>Arbeitsfläche</b>	Dark grey
<b>Herd</b>	ENQ gas
<b>Ofen</b>	ENQ gas
<b>Dunstabsauge</b>	Yes
<b>Kuhlschrank</b>	Additional Isotherm 144L in saloon - 2 x Vitrifigo in cockpit
<b>Gefrier Truhe</b>	Deep freezer in saloon and in saloon fridge
<b>Warmwasser System</b>	40L boiler
<b>Eismaschine</b>	Yes
<b>Eignerkabine</b>	Identical owner cabins aft starboard
<b>Länge Bett (m)</b>	Queen size
<b>Kleiderschrank</b>	Hanging shelves and drawers with storage under bed
<b>Badezimmer</b>	En-suite with shower
<b>Toilet</b>	Yes
<b>Toilette System</b>	Electric
<b>Gästekabine 1</b>	Identical owner cabins aft port
<b>Länge Bett (m)</b>	Queen size
<b>Kleiderschrank</b>	Hanging shelves and drawers with storage under bed
<b>Toilette</b>	Yes
<b>Toilette System</b>	Electric
<b>Gästekabine 2</b>	Forward starboard
<b>Länge Bett (m)</b>	Double



<b>Kleiderschrank</b>	Hanging shelves and drawers with storage under bed
<b>Badezimmer</b>	En-suite
<b>Toilette</b>	Yes
<b>Toilette System</b>	Electric
<b>Gästekabine 3</b>	Forward port
<b>Länge Bett (m)</b>	Double
<b>Kleiderschrank</b>	Hanging shelves and drawers with storage under bed
<b>Badezimmer</b>	En-suite
<b>Toilette</b>	Yes
<b>Toilette System</b>	Electric
<b>Gästekabine 4</b>	2 x crew single cabins forward
<b>Weitere Info</b>	USB sockets in all cabins
<b>Weitere Info</b>	Fans in saloon and cabins

## MASCHINEN

<b>Motoranzahl</b>	2
<b>Marke</b>	YANMAR
<b>Typ</b>	4JH57CR SD
<b>PS</b>	57
<b>kW</b>	41.95
<b>Kraftstoffart</b>	Diesel
<b>Installiert im Jahr</b>	2023
<b>Motorstunden</b>	3059
<b>Kühlungssystem Motor</b>	indirekte Wärmetauscher
<b>Antrieb</b>	Saildrive
<b>Motor bedienung</b>	Throttles at helm
<b>Gewende getriebe</b>	Intergrated
<b>kW</b>	42
<b>Propeller Typ</b>	Fixed three blade
<b>Hand Bilgenpumpe</b>	1 per hull
<b>Elektrische Bilgenpumpe</b>	1 per hull



<b>Elektrische Anlage</b>	220V
<b>Generator</b>	220V Mase 11KVA
<b>Betriebsstunden Generator</b>	415
<b>Batterien</b>	Engine start: 2 × 110Ah AGM (12V)
<b>Versorgungsbatterie</b>	Service/domestic: 2 × 140Ah AGM (12V)
<b>Solar panele</b>	4 × flexible panels (115W each)
<b>Wasserbereiter</b>	Yes
<b>Weitere Info</b>	2 x additional service batteries 140Amp + controller

## NAVIGATION

<b>Multi Control Display</b>	Raymarine Axiom Pro 12 HybridTouch
<b>Tiefenanzeige</b>	2 x Raymarine i70s
<b>UKW</b>	Raymarine Ray63 VHF
<b>Autopilot</b>	2 x Raymarine i70s
<b>Ruderwinkel Anzeige</b>	Displayed on P70s autopilot control panel
<b>Plotter/GPS</b>	Intergrated into Raymarine Axiom Pro
<b>AIS Empfänger</b>	Raymarine
<b>Weitere Info</b>	2 x Yanmar B25 Engine control monitors

## AUSRÜSTUNG

<b>Kuchenbude</b>	Yes NEW 2024
<b>Bimini</b>	Yes
<b>Cockpit Polster</b>	Dark grey with sunlounger intergated
<b>Cockpit Tisch</b>	Yes
<b>Badeleiter</b>	Yes
<b>Gangway</b>	Yes
<b>Anker</b>	25kg
<b>Ankerkette</b>	85m
<b>Anker 2</b>	25kg
<b>Ketten Zähler</b>	Quick QNC chain counter
<b>Ankerwinde</b>	Yes



Deckwasche	Sea water / fresh water
Beiboot	ZAR mini
Ausserborder	10HP Honda
Davits	S/steel dinghy hoist system with manual winch
Bugkorb	Yes with wooden seats
Rettungsinsel (Pers)	Fully serviced
Letzte Wartung Rettungsinsel	2024
Schwimvesten	Yes
TV	In saloon
TV-Empfänger	TV Antenna
I-Pod Anschluss	Fusion Apollo MS-RA 670 Player
Surround Sound System	Fusion RA70N
Lautsprecher im Pflicht	2 x
Lautsprecher im Salon	2 x
Weitere Info	Sunlounging area with 2 x lifting backrest on roof and foredeck

## RIGG

Rig	Fractional sloop
Stehendes Gut	Stainless steel wire
Marke Mast	Selden
Material Mast	Aluminium deck stepped
Salings	1 pair
Großsegel	Extra robust dacron Elvstrøm sail
Großsegel-Persenning	Lazy bag with lazy jacks
Latten traveller	Standard track
Durchelatted großsegel	Yes
Rollref Baum	Headsail furler only
Fock	Self tacking Elvstrøm furling jib
Primare Schot Winschen	3 x Harken 46.2ST
Reff Winsch	Reef lines led back to the starboard Harken 46.2ST winch
Multifunktional Winschen	All winches multifunctional



Weitere Info

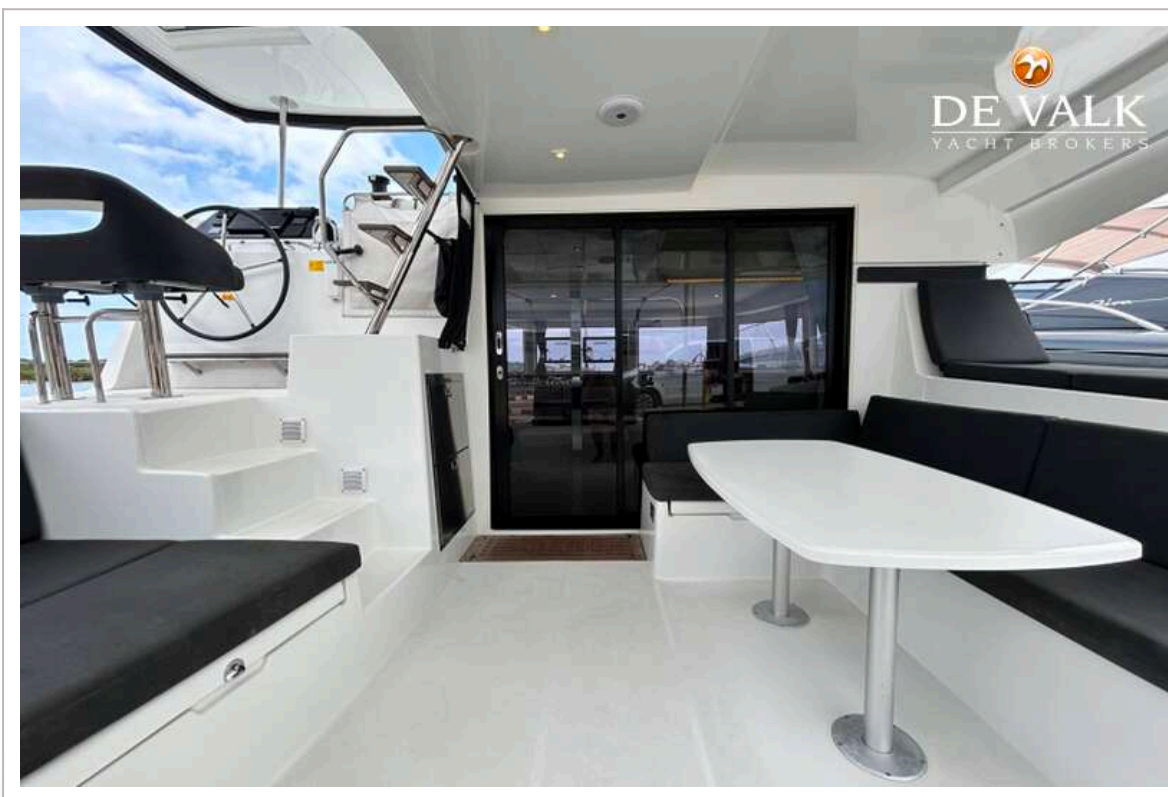
82m<sup>2</sup> sail area



# LAGOON 42



# LAGOON 42



# LAGOON 42



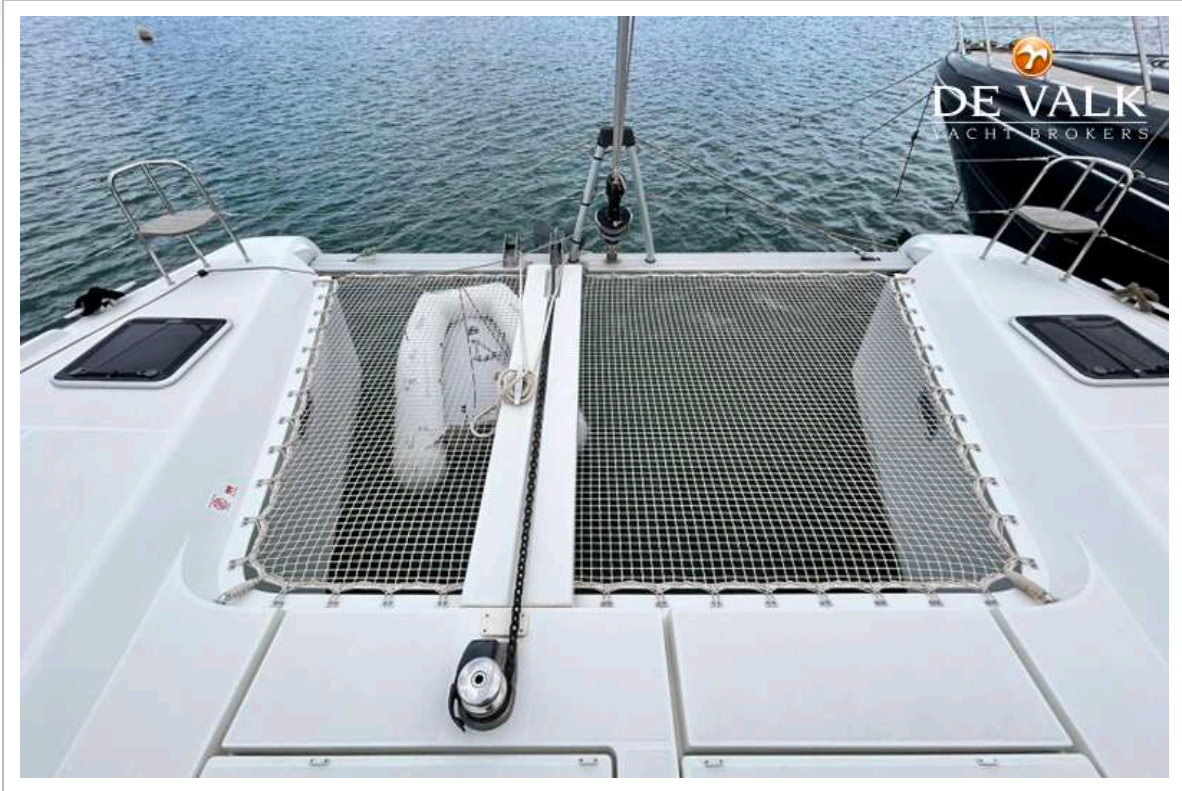
# LAGOON 42



# LAGOON 42



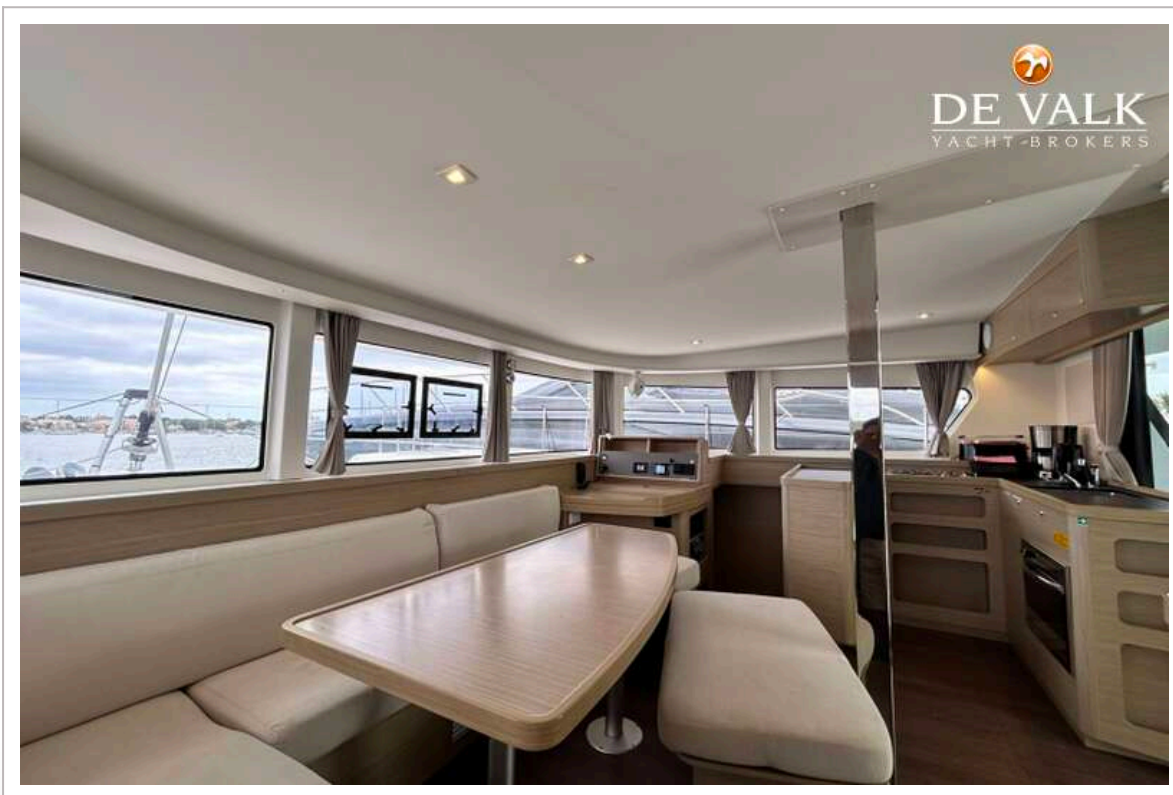
# LAGOON 42



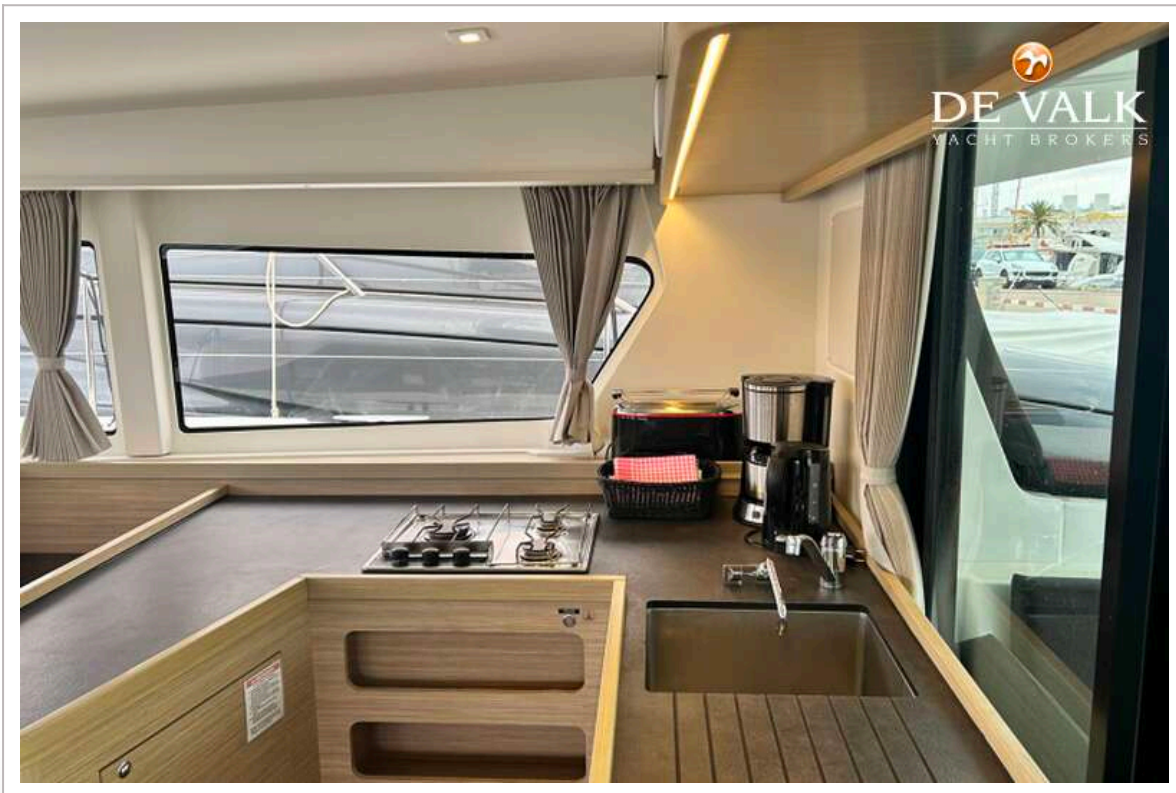
# LAGOON 42



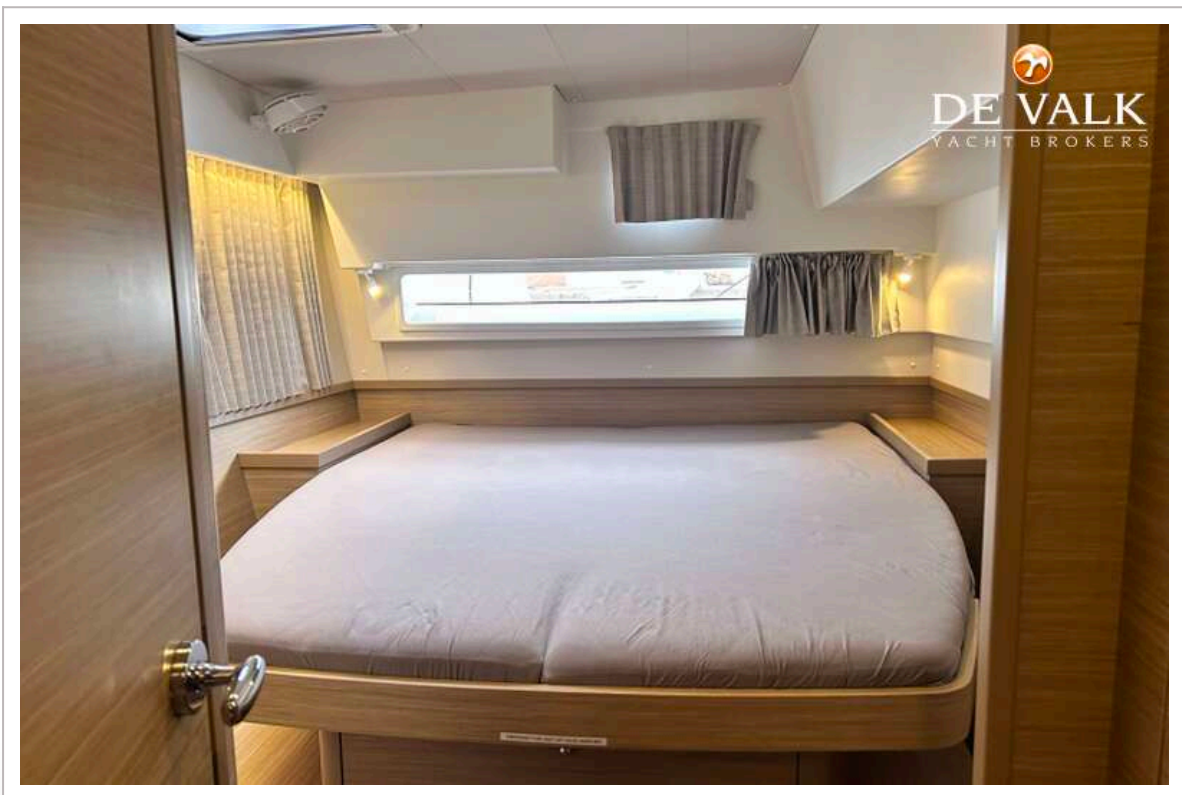
# LAGOON 42

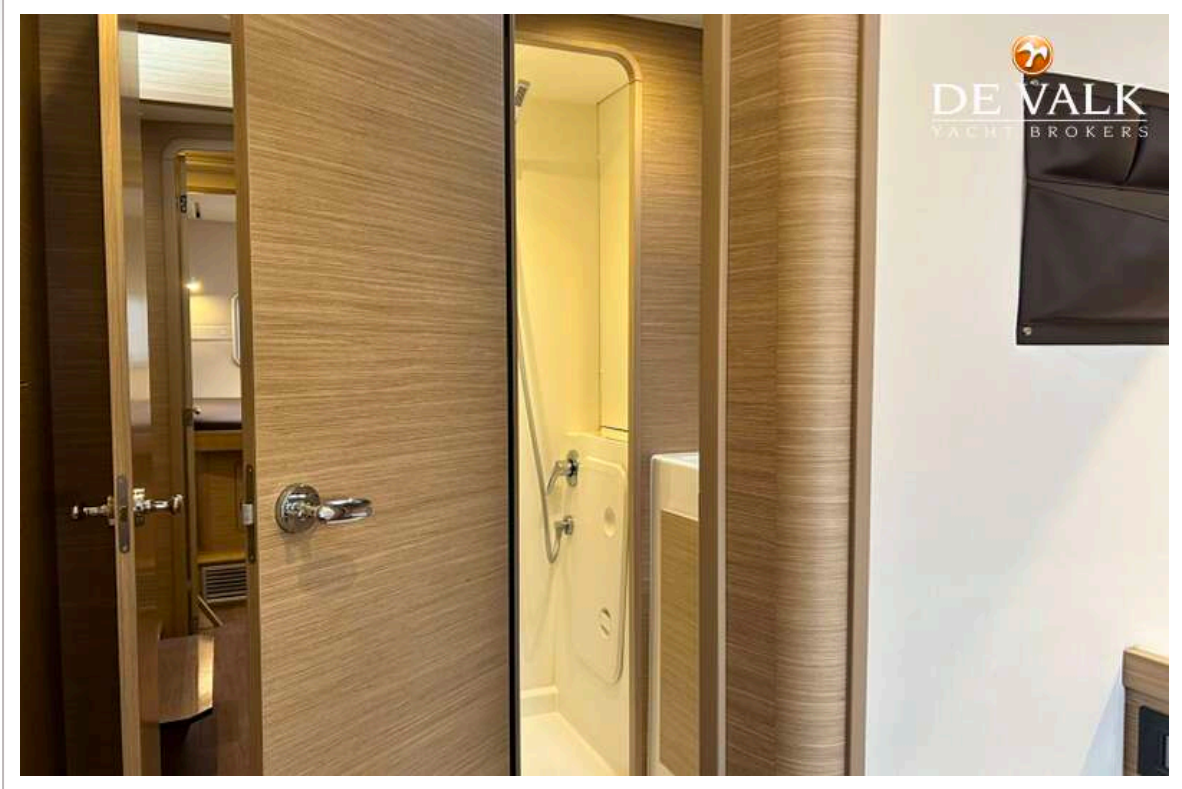


# LAGOON 42

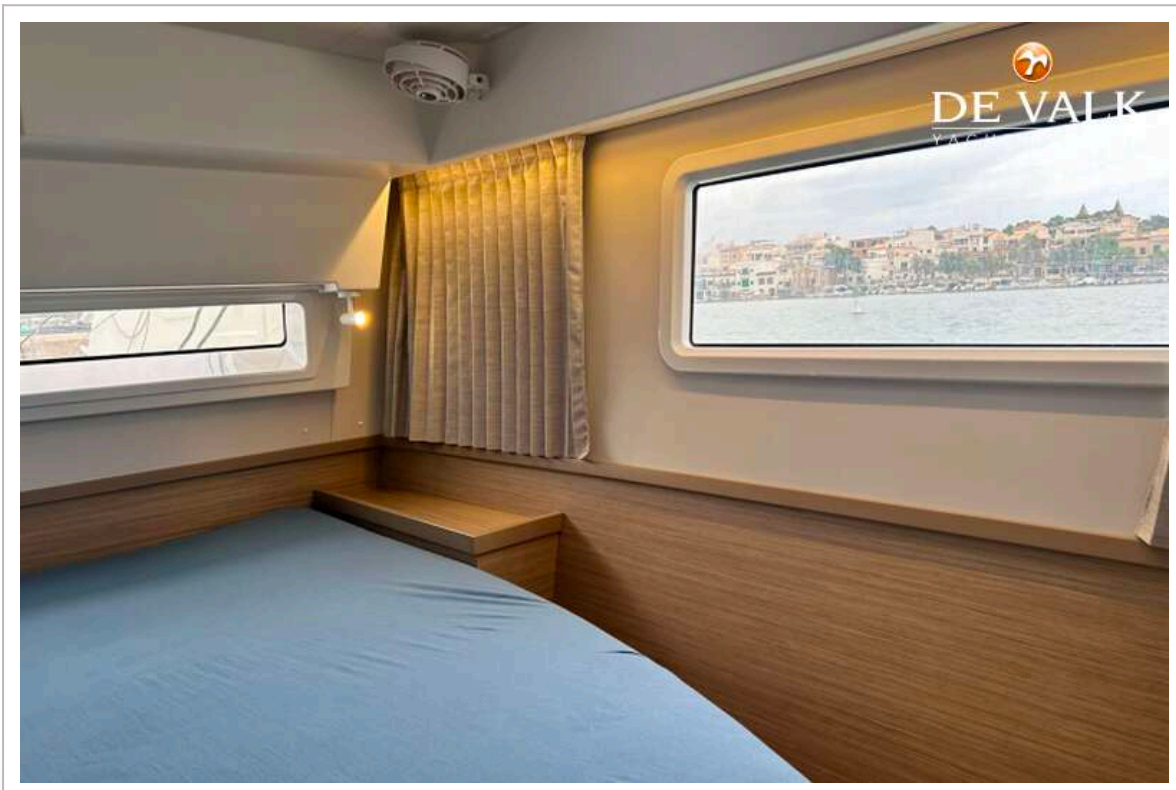


# LAGOON 42





# LAGOON 42



# LAGOON 42



# LAGOON 42



# LAGOON 42

