



DE VALK  
YACHT BROKERS



## NEREIDS CUSTOM BUILT YACHT 27 M



DE VALK  
YACHT BROKERS

# NEREIDS CUSTOM BUILT YACHT 27 M

## KOMMENTARE DES MAKLERS

Nereids Custom Built 27m sailingyacht offers timeless design, solid engineering, and luxury throughout. Designed for long-range cruising with generous living spaces, 3 elegant guest cabins, and full crew quarters. Refitted in 2022 with upgrades to navigation, interiors, and mechanical systems. Ideal for private use or charter. Impeccably maintained and ready for her next owner. Viewings highly recommended for discerning buyers.

*Eric Lamers*

## TECHNISCHE DATEN

<b>Maße</b>	27.00 x 6.00 x 3.05 (m)	<b>Werft</b>	Nereids Yachts
<b>Baujahr</b>	2008	<b>Kabinen</b>	3
<b>Material</b>	Aluminium	<b>Kojen</b>	6
<b>Motor(en)</b>	1 x MAN DOOSAN/Daewoo diesel	<b>PS/kW</b>	230.00 (PS), 169.28 (kW)
<b>Verkaufspreis</b>	€ 1.150.000 (MwSt. Beahlt)	<b>Liegeplatz</b>	contact Antibes

## KONTAKT

<b>Verkaufsbüro</b>	De Valk Antibes	<b>Telefon</b>	+33 492 91 0202
<b>Adresse</b>	2, Avenue de Verdun 06600 Antibes FR	<b>E-Mail</b>	antibes@devalk.nl

## HAFTUNGSAUSSCHLUSS

Diese Angaben erfolgen nach bestem Wissen, können jedoch nicht garantiert werden.



# NEREIDS CUSTOM BUILT YACHT 27 M

## ALLGEMEIN

<b>Modell</b>	NEREIDS CUSTOM BUILT YACHT 27 M
<b>Typ</b>	Segelyacht
<b>Rumpflänge (m)</b>	27,00
<b>Breite (m)</b>	6,00
<b>Tiefgang (m)</b>	3,05
<b>Stehhöhe (m)</b>	2,00
<b>Baujahr</b>	2008
<b>Werft</b>	Nereids Yachts
<b>Land</b>	Tschechische Republik
<b>Entwerfer</b>	Julius Strawinsky (ext)/P.Raemdonc (int)
<b>Brutto tonnage</b>	43
<b>Rumpfmateriale</b>	Aluminium
<b>Rumpffarbe</b>	Weiß
<b>Deckmaterial</b>	Teak
<b>Pflicht Bedeckung</b>	Teak
<b>Treibstofftank (Liter)</b>	2200 L
<b>Trinkwassertank (Liter)</b>	2 x 750 L, port and starboard
<b>Fäkaelien Tank (Liter)</b>	150L + 300L
<b>Grauwassertank (Liter)</b>	800L
<b>Radsteuerung</b>	ja
<b>Weitere Info</b>	Built in 2008 / 2018 (refit interior and deck), 2020 (refit tech

## UNTERKUNFT

<b>Kabinen</b>	3
<b>Kojen</b>	6
<b>Mannschaftskabine</b>	2
<b>Heizung</b>	ja
<b>Klima Anlage</b>	ja
<b>Navigation Zenter</b>	ja
<b>Kombüse</b>	Large and fully equipped



# NEREIDS CUSTOM BUILT YACHT 27 M

<b>Arbeitsfläche</b>	Edelstahl
<b>Spülbecken</b>	ja
<b>Herd</b>	Induktion 5 plates 220V 50hz
<b>Ofen</b>	Siemens 220V 50hz
<b>Mikrowelle</b>	Miele 220V 50hz
<b>Kuhlschrank</b>	24V DC air cooled (2x)
<b>Gefrier Truhe</b>	24V DC air cooled (2x)
<b>Weinkühler</b>	Miele 220V 50hz
<b>Warmwasser System</b>	ja
<b>Geschirrspulmaschine</b>	Miele 220V 50hz
<b>Eignerkabine</b>	Primary suite with a queen size bed and en-suite bathroom
<b>Badezimmer</b>	en suite
<b>Gästekabine 1</b>	Doppelbett With en-suite bathroom facilities
<b>Gästekabine 2</b>	Doppelbett With en-suite bathroom facilities
<b>Badezimmer</b>	en suite
<b>Badezimmer</b>	ja
<b>Mannschaftskabine(n)</b>	ja
<b>Badezimmer (Mannschaft)</b>	ja
<b>Waschmaschine</b>	Bosch Series 6 (2022) 220V 50hz
<b>Trockner</b>	Bosch Series 2 (2022) 220V 50hz

## MASCHINEN

<b>Motoranzahl</b>	1
<b>Marke</b>	MAN
<b>Typ</b>	DOOSAN/Daewoo
<b>PS</b>	230
<b>kW</b>	169.28
<b>Kraftstoffart</b>	Diesel
<b>Höchstgeschwindigkeit (Kn)</b>	10,5
<b>Marschgeschwindigkeit (Kn)</b>	8
<b>Reichweite (nm)</b>	1500



# NEREIDS CUSTOM BUILT YACHT 27 M

<b>Motorstunden</b>	3600
<b>Gewende getriebe</b>	DONG-I with 2.09:1 reduction ratio
<b>Propeller Typ</b>	PYTHON-DRIVE, 3 bladed MAXPROP spindle 110nm
<b>Elektrische Bilgenpumpe</b>	ja
<b>Generator</b>	Northern Lights, 16KW, Diesel
<b>Batterien</b>	900Ah
<b>Batterie Ladegerat</b>	ja
<b>Batterie Ladegerat/Umwandler</b>	Victron Energy Quattro 24/8000W/200A (2017)
<b>Landstrom</b>	230V AC Ring Main
<b>Wasserbereiter</b>	Pure water 230V AC 50Hz - 120L/H

## NAVIGATION

<b>Kompass</b>	Plastimo Horizon 135
<b>Tiefenanziege</b>	Clipper
<b>UKW</b>	ICOM HM139B Commandmic
<b>Autopilot</b>	Jefa
<b>Radar</b>	Raymarine C70
<b>Plotter</b>	ja
<b>Plotter/GPS</b>	Raymarine
<b>Navtex</b>	Furuno NX 700
<b>Weitere Info</b>	GSM: GMDSSSA
<b>Weitere Info</b>	Satcom: FURUNO SatcomC Iridium Go

## AUSRÜSTUNG

<b>Bimini</b>	Cream canvas bimini top
<b>Sonnenschirm</b>	Stainless steel bimini structure with cream canvas bimini top
<b>Cockpit Polster</b>	ja
<b>Cockpit Tisch</b>	ja
<b>Ankerkette</b>	1 CZR 60kg / 1 CQR 80kg / 100m chain 16mm
<b>Ankerwinde</b>	Muir VRC-4500 3,500W 24V DC
<b>Rettungsinsel</b>	ja



TV	ja
Radio	ja

## RIGG

Rig	Alucarbon 7/8 fractional rig with lazyjacks
Material Mast	Alucarbon white-painted carbon fibre
Großsegel	Quantum fully battened spectra
Durchelatted großsegel	Spectra, with 3 reefs fitted
Rollref Baum	Alucarbon white-painted carbon fibre with hayrack stracking syst
Genua	Furling hi-cut yankee/genoa spectra carbon
Rollreffanlage	ja
Stagesegel	Spectra carbon, reefable
Großer Klüver	Furling hi-cut
Reff Vorrichtung	Reffleinen
Baumniederhohler	ja
Primare Schot Winschen	ja
Genua Schotwischen	ja
Fall Winschen	ja
Reff Wunsch	ja
Multifunktional Winschen	ANTAL stainless steel, 2xW70 2 speed electric self-tailing,

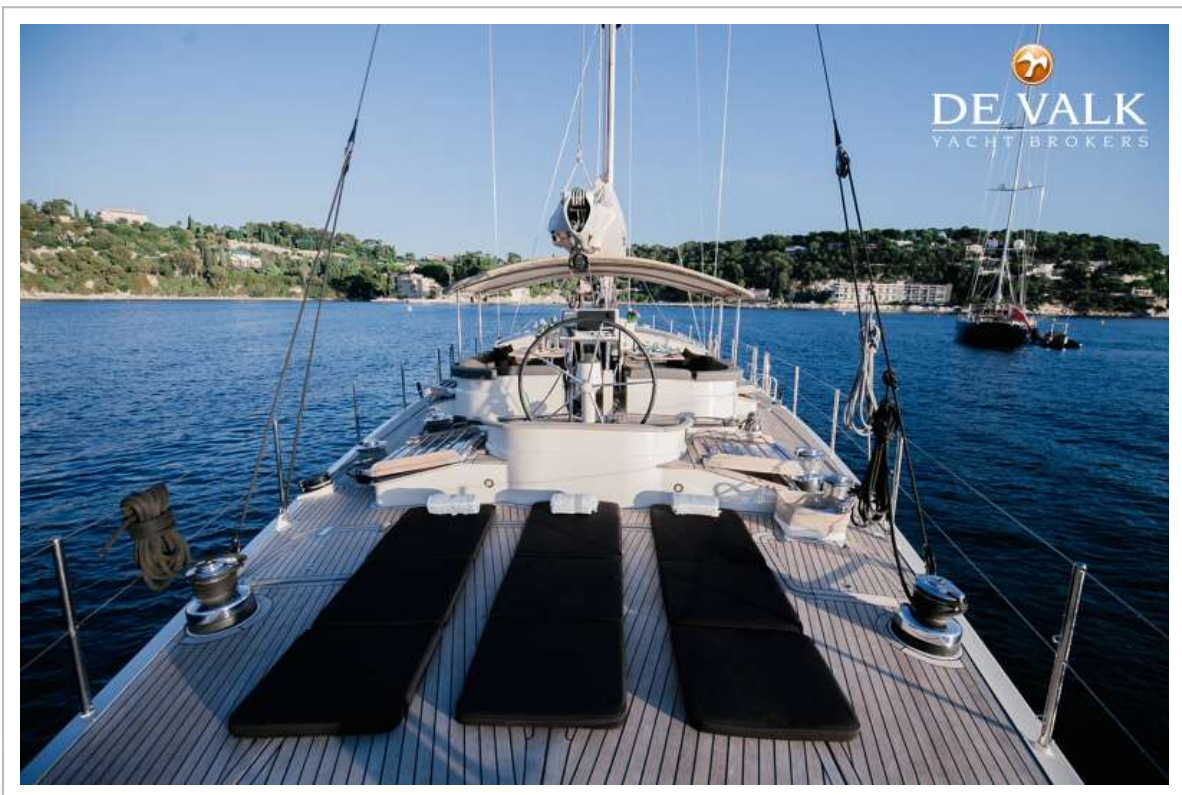




# NEREIDS CUSTOM BUILT YACHT 27 M

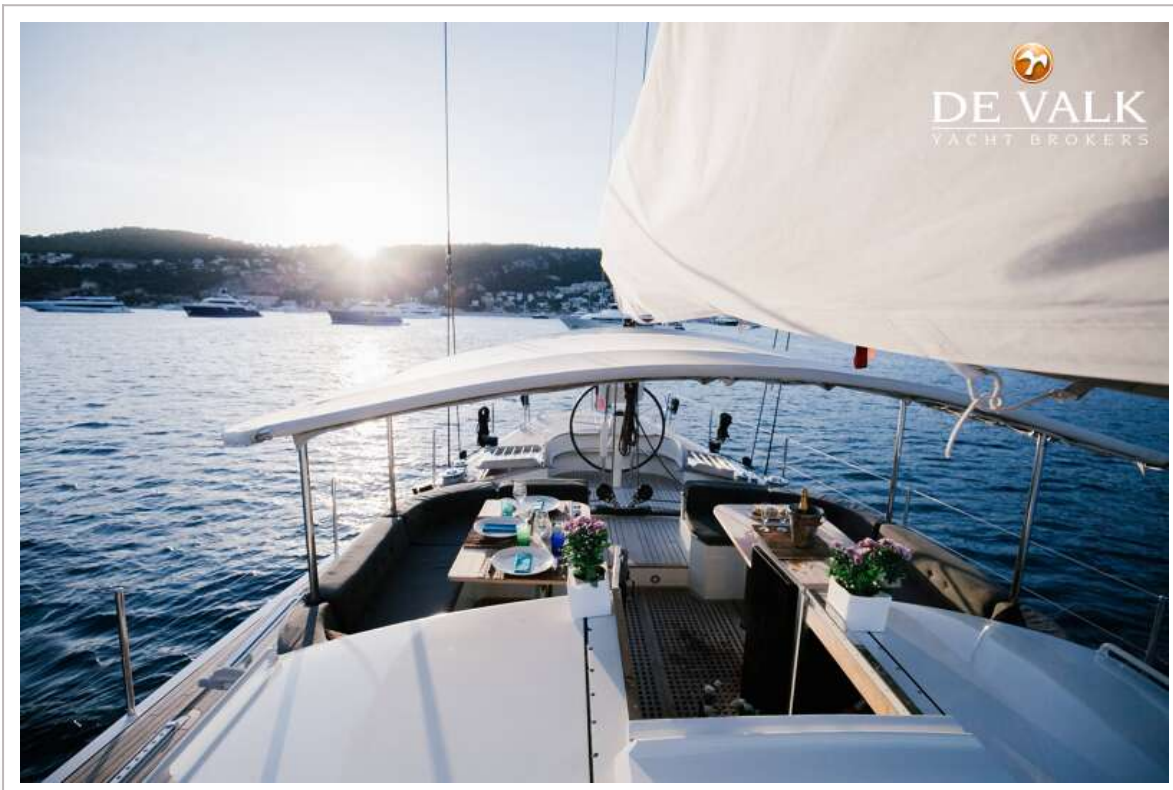
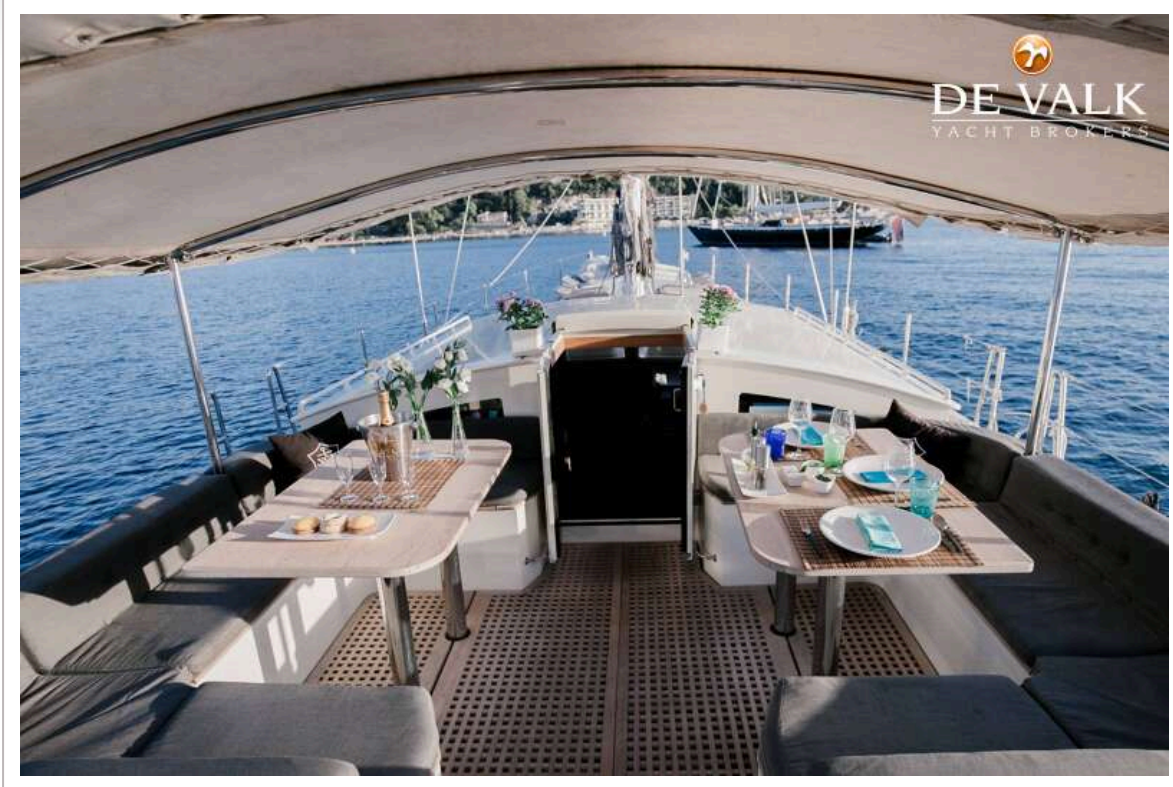


# NEREIDS CUSTOM BUILT YACHT 27 M



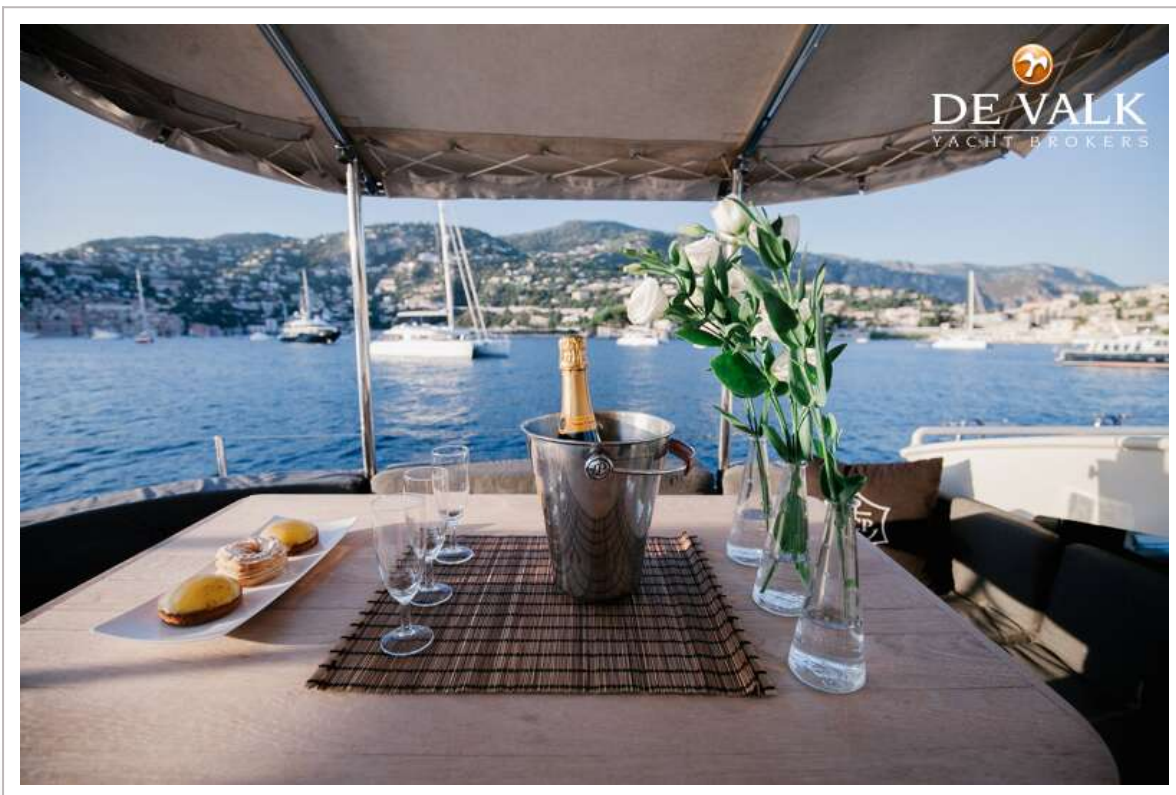
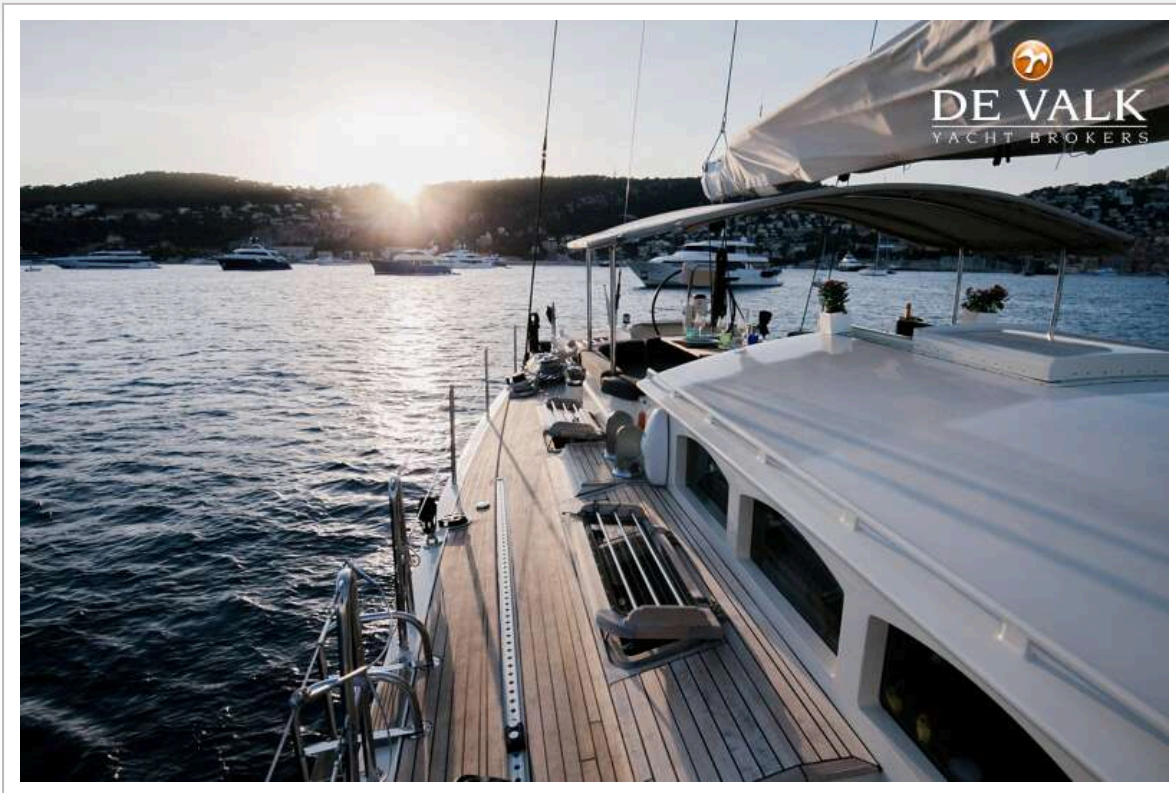


# NEREIDS CUSTOM BUILT YACHT 27 M



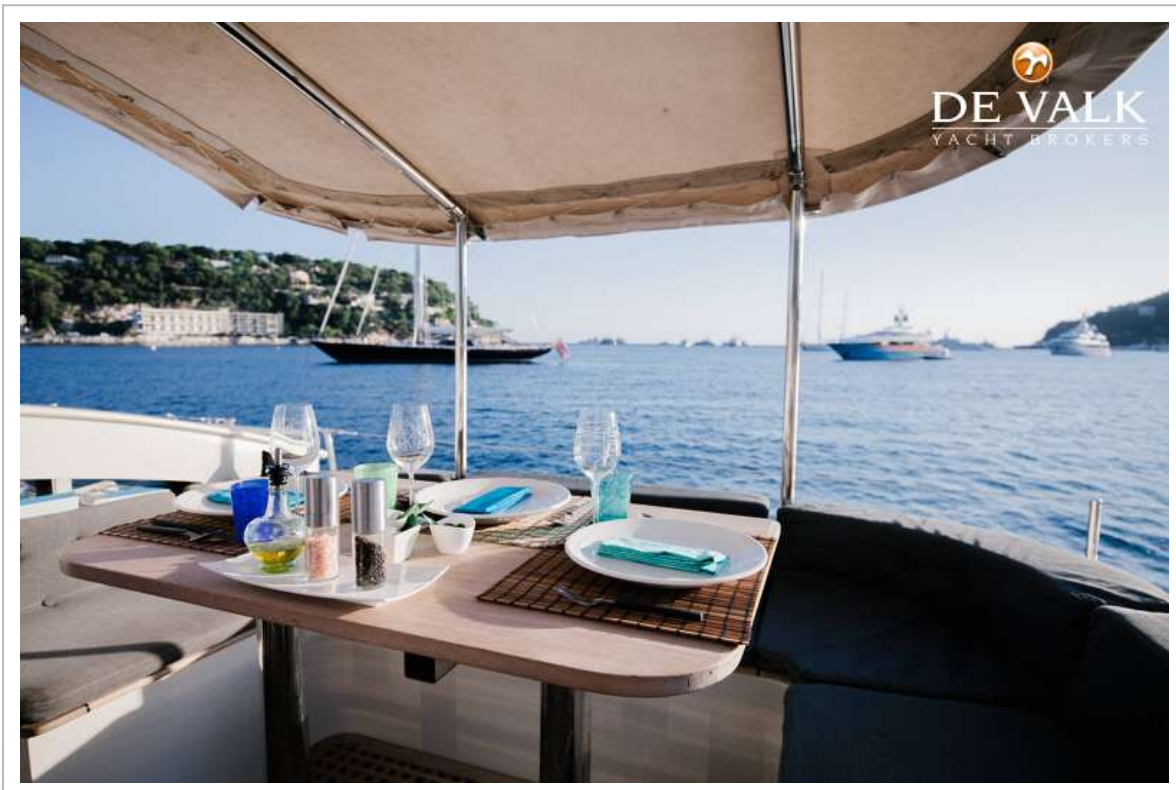


# NEREIDS CUSTOM BUILT YACHT 27 M

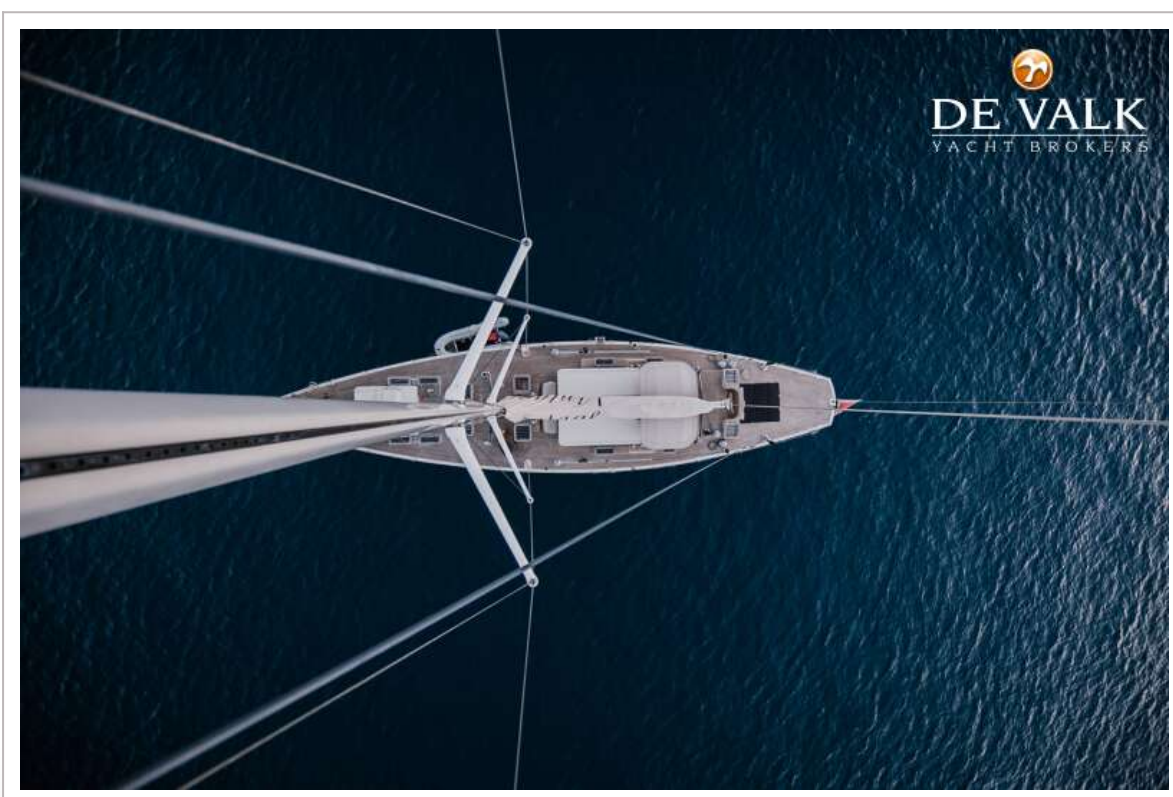




# NEREIDS CUSTOM BUILT YACHT 27 M



# NEREIDS CUSTOM BUILT YACHT 27 M





# NEREIDS CUSTOM BUILT YACHT 27 M



# NEREIDS CUSTOM BUILT YACHT 27 M

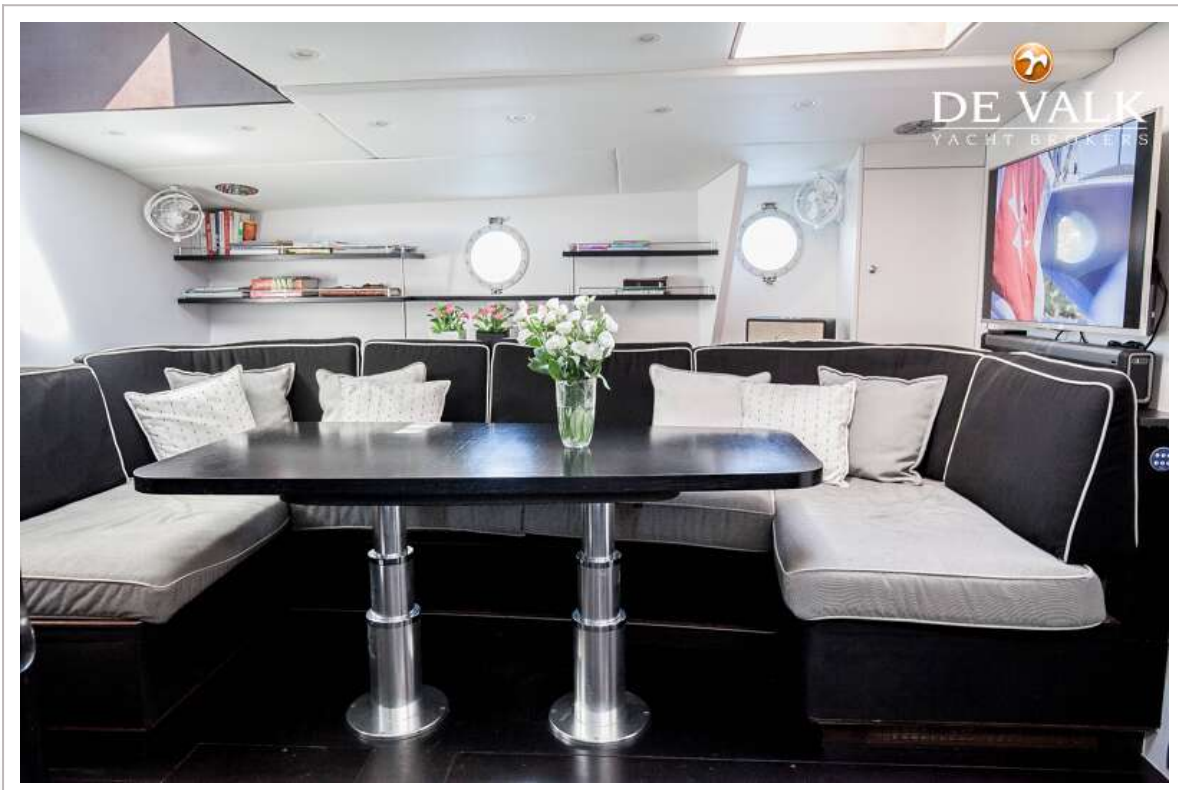




# NEREIDS CUSTOM BUILT YACHT 27 M

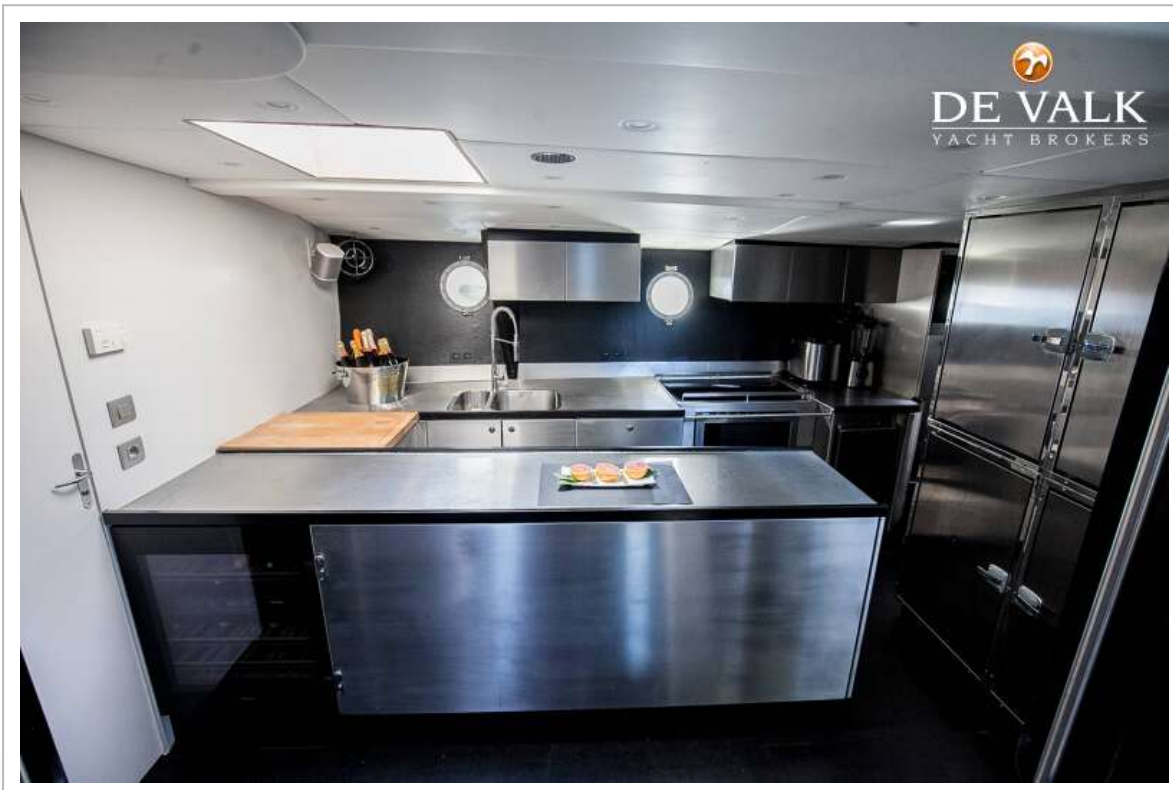
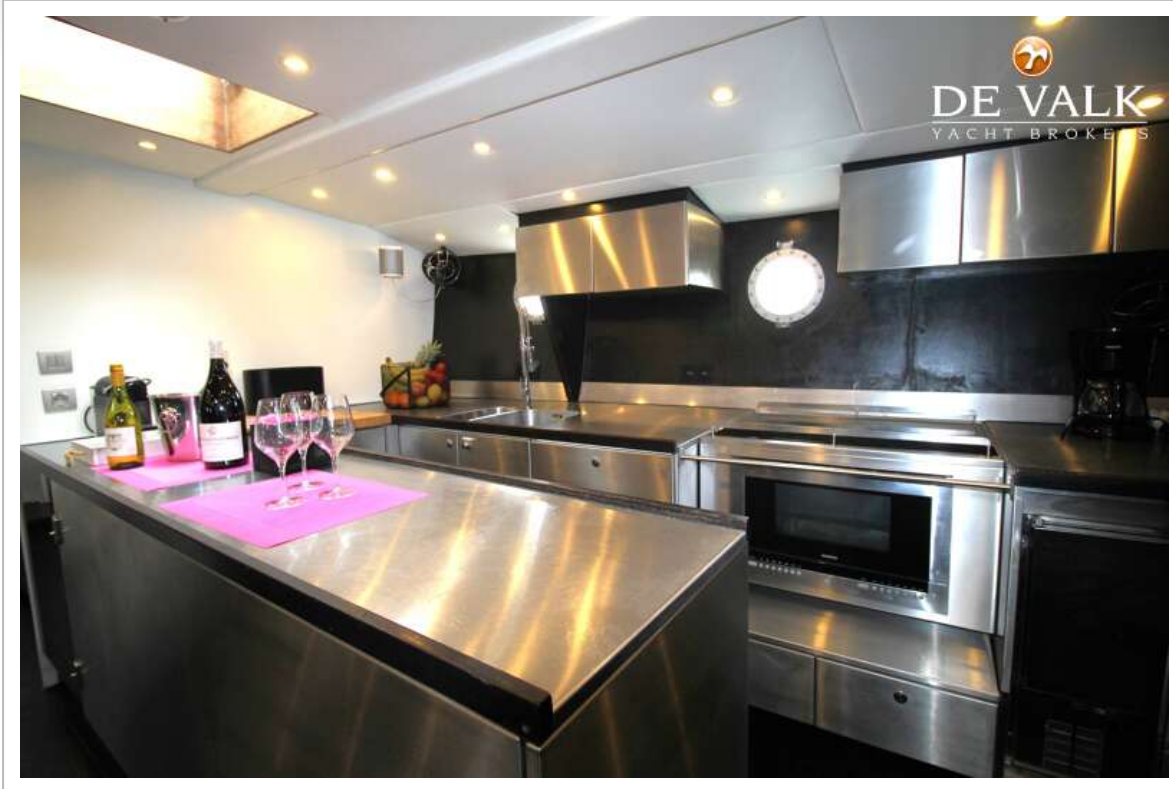


# NEREIDS CUSTOM BUILT YACHT 27 M

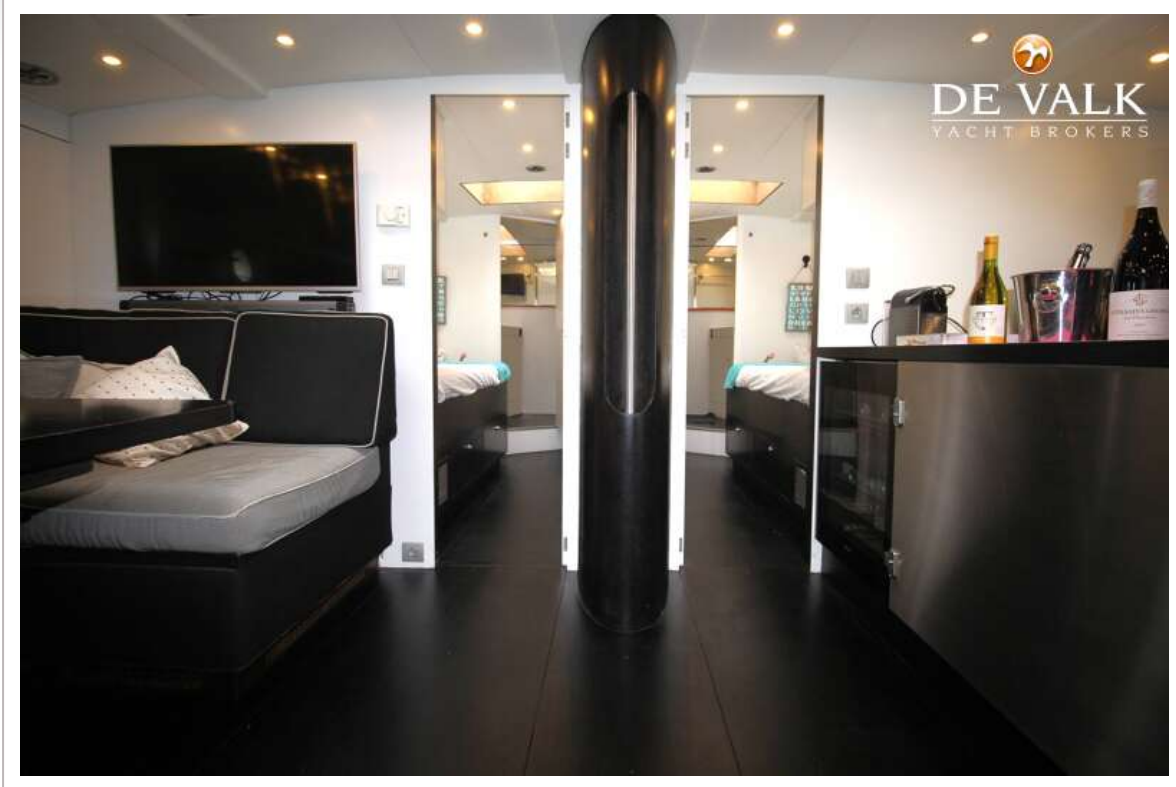




# NEREIDS CUSTOM BUILT YACHT 27 M



# NEREIDS CUSTOM BUILT YACHT 27 M

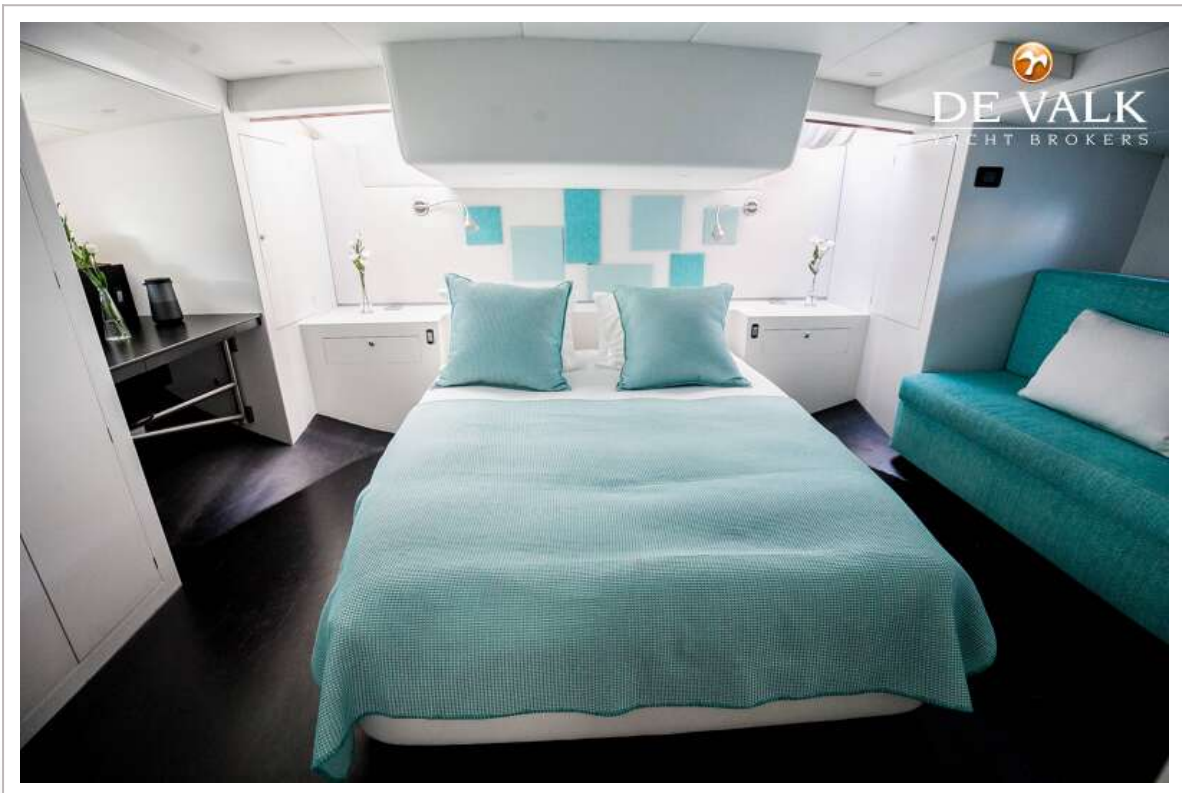
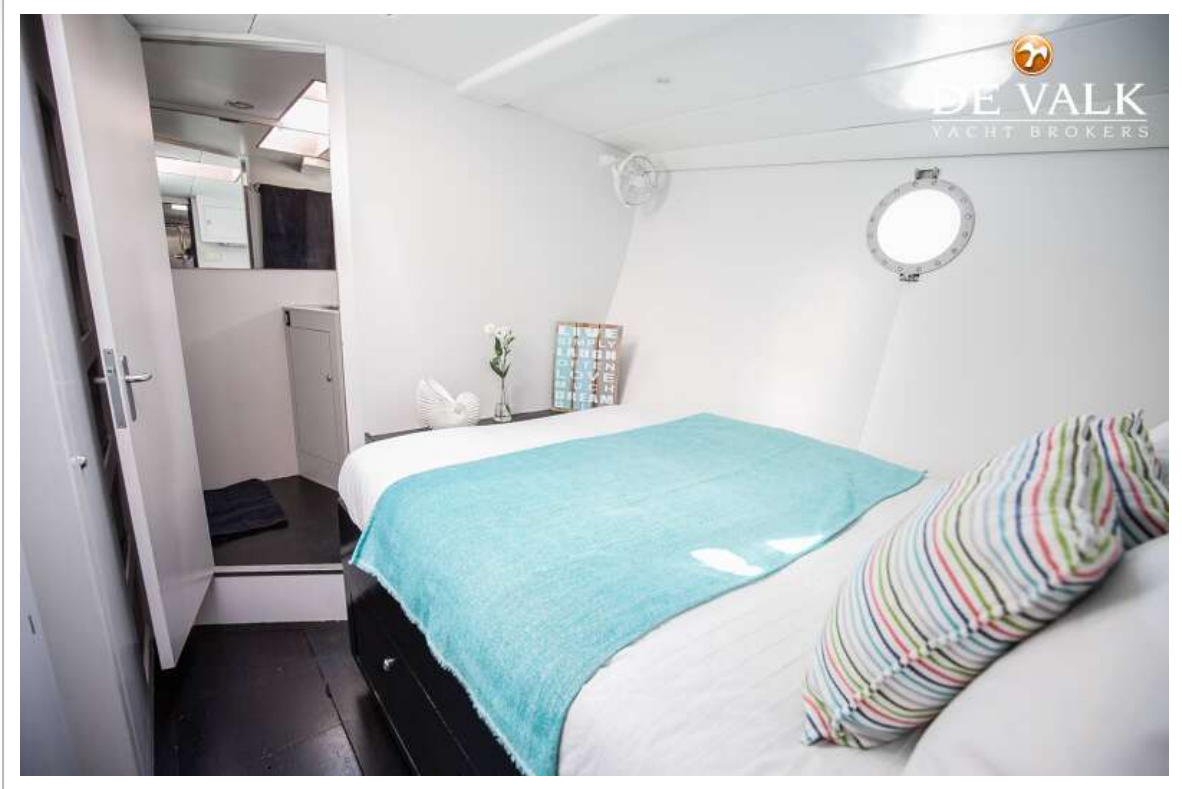


# NEREIDS CUSTOM BUILT YACHT 27 M



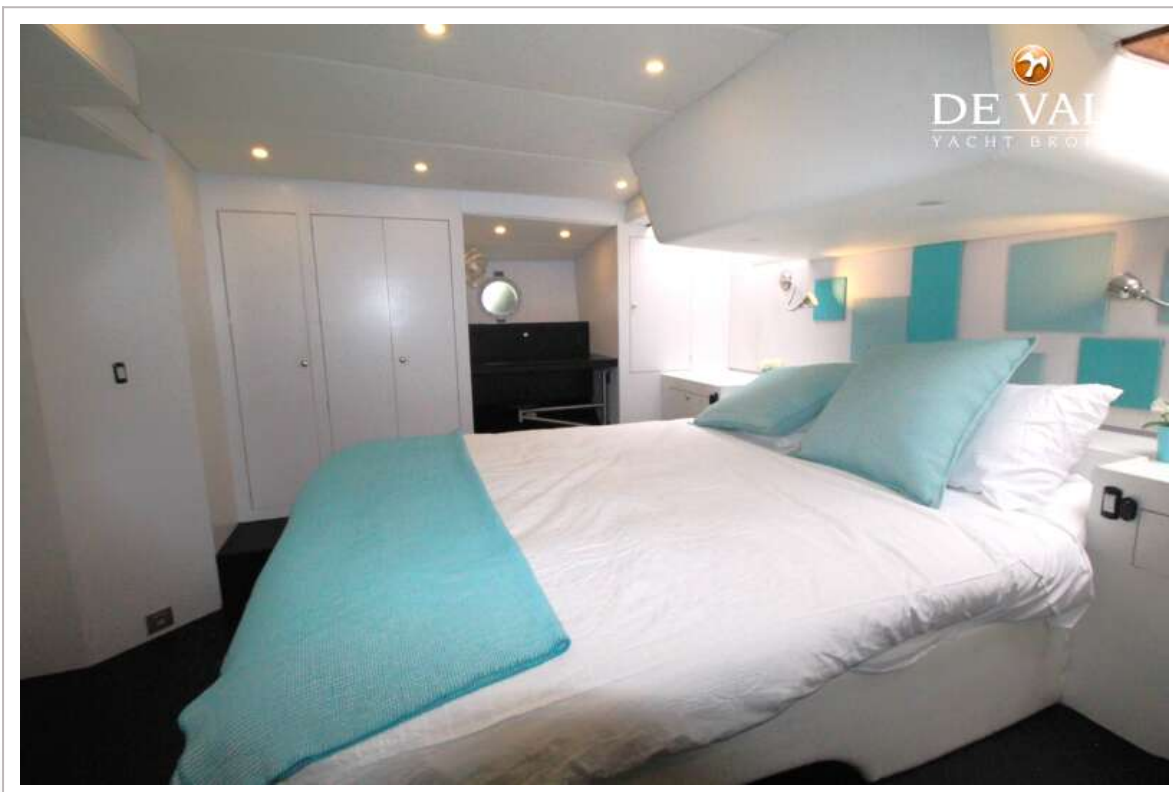
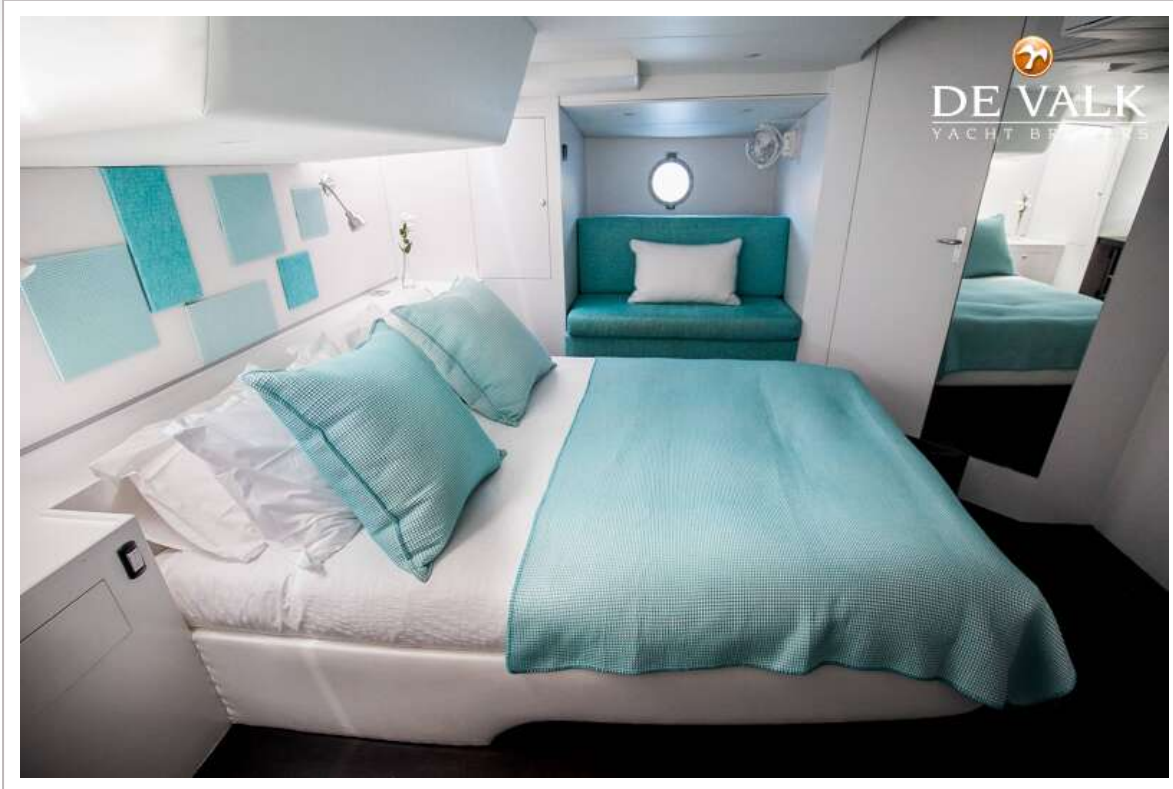


# NEREIDS CUSTOM BUILT YACHT 27 M

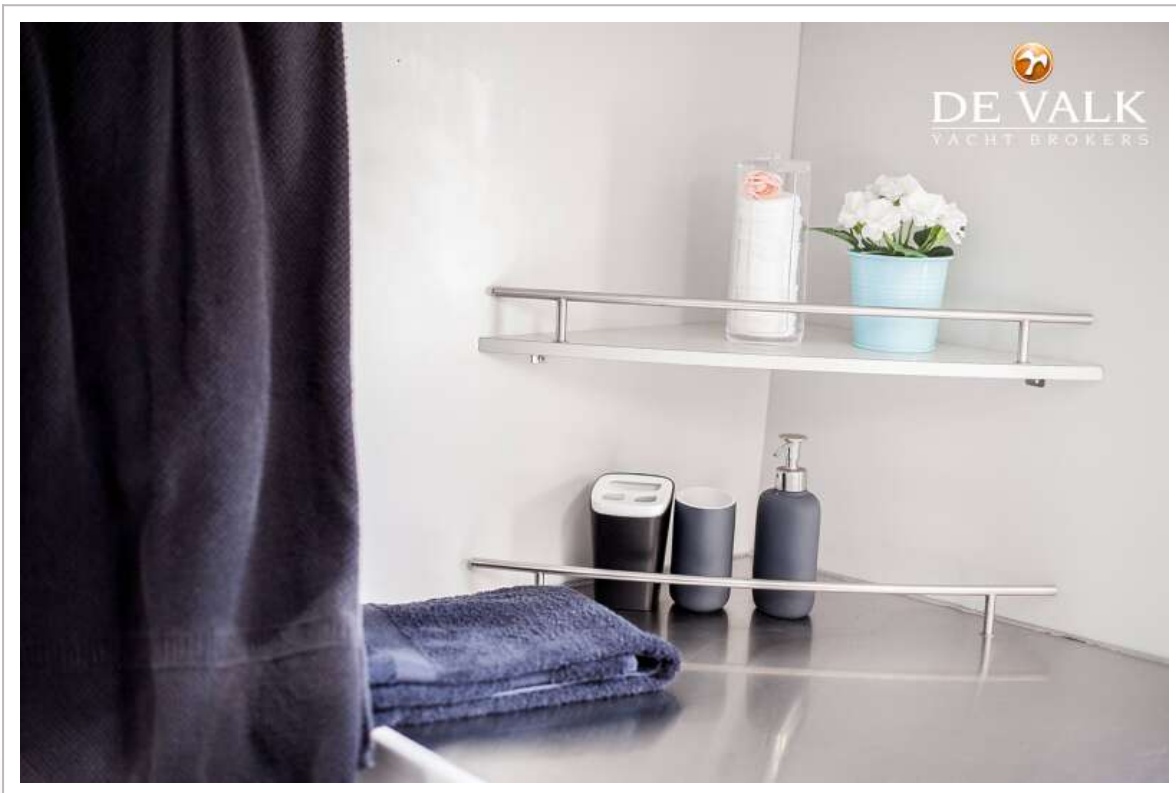




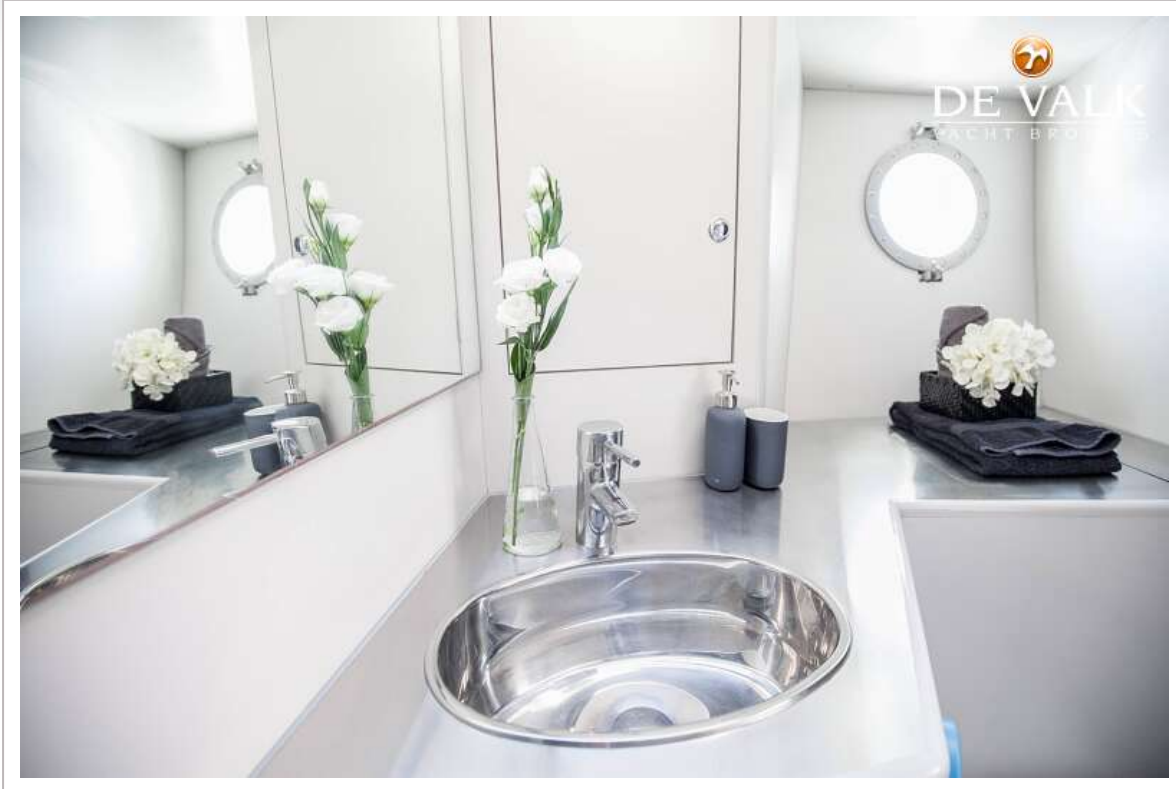
# NEREIDS CUSTOM BUILT YACHT 27 M



# NEREIDS CUSTOM BUILT YACHT 27 M

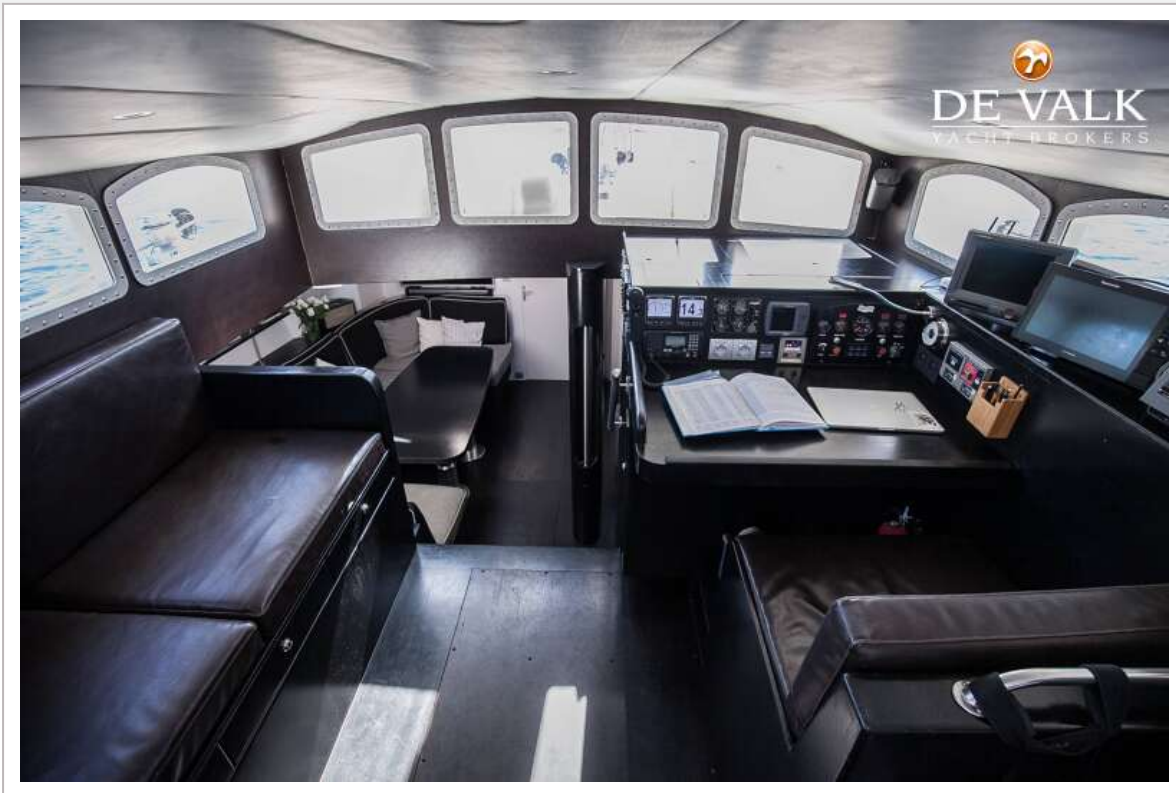


# NEREIDS CUSTOM BUILT YACHT 27 M





# NEREIDS CUSTOM BUILT YACHT 27 M



# NEREIDS CUSTOM BUILT YACHT 27 M

