



DE VALK
YACHT BROKERS



TRULY CLASSIC 90



DE VALK
YACHT BROKERS

KOMMENTARE DES MAKLERS

Nereids Custom Built 27m sailingyacht offers timeless design, solid engineering, and luxury throughout. Designed for long-range cruising with generous living spaces, 3 elegant guest cabins, and full crew quarters. Refitted in 2022 with upgrades to navigation, interiors, and mechanical systems. Ideal for private use or charter. Impeccably maintained and ready for her next owner. This yacht will be auctioned soon at Bright Auctions, see for more info: <https://bit.ly/Truly-Classic-90>

Eric Lamers

TECHNISCHE DATEN

Maße	27.00 x 6.00 x 3.05 (m)	Werft	Nereids Yachts
Baujahr	2008	Kabinen	3
Material	Aluminium	Kojen	6
Motor(en)	1 x MAN DOOSAN/Daewoo diesel	PS/kW	230.00 (PS), 169.28 (kW)
Angebotspreis	€ 210.000 (MwSt. Nicht bezahlt)	Liegeplatz	contact Antibes

KONTAKT

Verkaufsbüro	De Valk Antibes	Telefon	+33 492 91 0202
Adresse	2, Avenue de Verdun 06600 Antibes FR	E-Mail	antibes@devalk.nl

HAFTUNGSAUSSCHLUSS

Diese Angaben erfolgen nach bestem Wissen, können jedoch nicht garantiert werden.



TRULY CLASSIC 90

ALLGEMEIN

Modell	TRULY CLASSIC 90
Typ	Segelyacht
Rumpflänge (m)	27,00
Breite (m)	6,00
Tiefgang (m)	3,05
Stehhöhe (m)	2,00
Baujahr	2008
Werft	Nereids Yachts
Land	Tschechische Republik
Entwerfer	Julius Strawinsky (ext)/P.Raemdonc (int)
Brutto tonnage	43
Rumpfmateriale	Aluminium
Rumpffarbe	Weiß
Deckmaterial	Teak
Pflicht Bedeckung	Teak
Treibstofftank (Liter)	2200 L
Trinkwassertank (Liter)	2 x 750 L, port and starboard
Fäkaelien Tank (Liter)	150L + 300L
Grauwassertank (Liter)	800L
Radsteuerung	ja
Weitere Info	Built in 2008 / 2018 (refit interior and deck), 2020 (refit tech

UNTERKUNFT

Kabinen	3
Kojen	6
Mannschaftskabine	2
Heizung	ja
Klima Anlage	ja
Navigation Zenter	ja
Kombüse	Large and fully equipped



TRULY CLASSIC 90

Arbeitsfläche	Edelstahl
Spülbecken	ja
Herd	Induktion 5 plates 220V 50hz
Ofen	Siemens 220V 50hz
Mikrowelle	Miele 220V 50hz
Kuhlschrank	24V DC air cooled (2x)
Gefrier Truhe	24V DC air cooled (2x)
Weinkühler	Miele 220V 50hz
Warmwasser System	ja
Geschirrspulmaschine	Miele 220V 50hz
Eignerkabine	Primary suite with a queen size bed and en-suite bathroom
Badezimmer	en suite
Gästekabine 1	Doppelbett With en-suite bathroom facilities
Gästekabine 2	Doppelbett With en-suite bathroom facilities
Badezimmer	en suite
Badezimmer	ja
Mannschaftskabine(n)	ja
Badezimmer (Mannschaft)	ja
Waschmaschine	Bosch Series 6 (2022) 220V 50hz
Trockner	Bosch Series 2 (2022) 220V 50hz

MASCHINEN

Motoranzahl	1
Marke	MAN
Typ	DOOSAN/Daewoo
PS	230
kW	169.28
Kraftstoffart	Diesel
Höchstgeschwindigkeit (Kn)	10,5
Marschgeschwindigkeit (Kn)	8
Reichweite (nm)	1500



TRULY CLASSIC 90

Motorstunden	3600
Gewende getriebe	DONG-I with 2.09:1 reduction ratio
Propeller Typ	PYTHON-DRIVE, 3 bladed MAXPROP spindle 110nm
Elektrische Bilgenpumpe	ja
Generator	Northern Lights, 16KW, Diesel
Batterien	900Ah
Batterie Ladegerat	ja
Batterie Ladegerat/Umwandler	Victron Energy Quattro 24/8000W/200A (2017)
Landstrom	230V AC Ring Main
Wasserbereiter	Pure water 230V AC 50Hz - 120L/H

NAVIGATION

Kompass	Plastimo Horizon 135
Tiefenanziege	Clipper
UKW	ICOM HM139B Commandmic
Autopilot	Jefa
Radar	Raymarine C70
Plotter	ja
Plotter/GPS	Raymarine
Navtex	Furuno NX 700
Weitere Info	GSM: GMDSSSA
Weitere Info	Satcom: FURUNO SatcomC Iridium Go

AUSRÜSTUNG

Bimini	Cream canvas bimini top
Sonnenschirm	Stainless steel bimini structure with cream canvas bimini top
Cockpit Polster	ja
Cockpit Tisch	ja
Ankerkette	1 CZR 60kg / 1 CQR 80kg / 100m chain 16mm
Ankerwinde	Muir VRC-4500 3,500W 24V DC
Rettungsinsel	ja



TV	ja
Radio	ja

RIGG

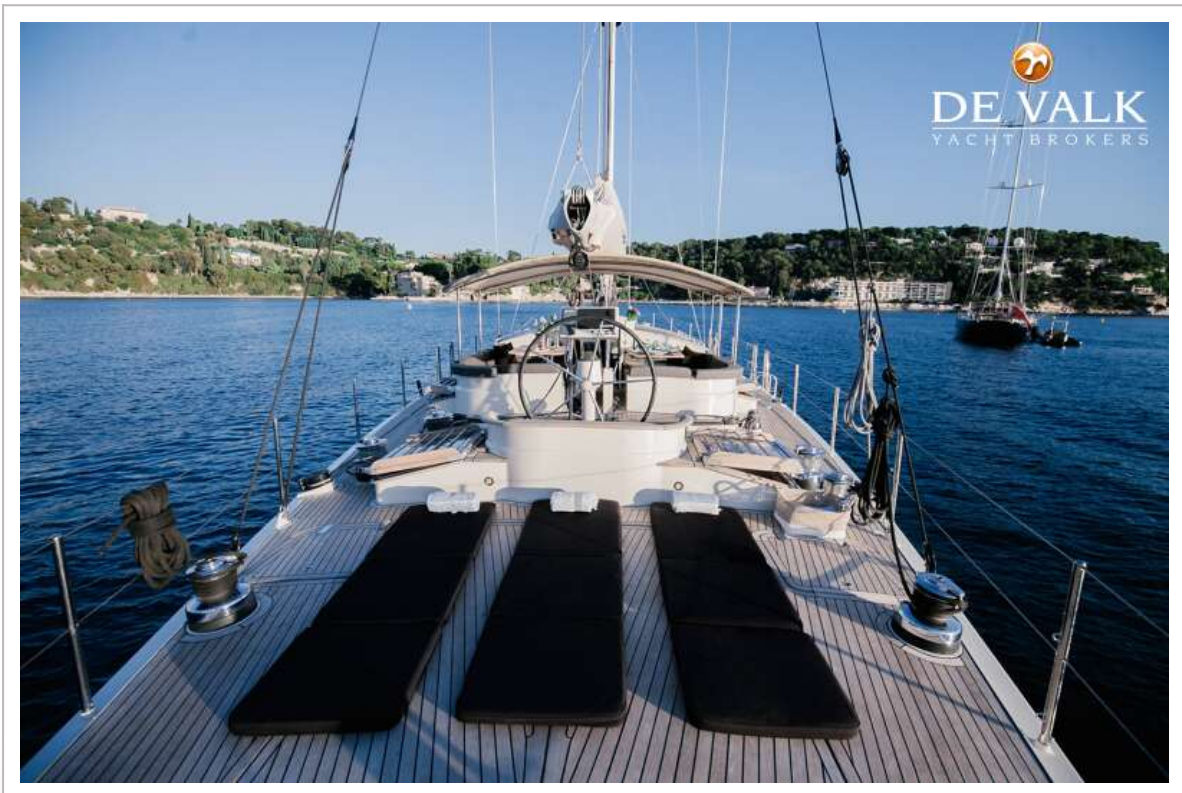
Rig	Alucarbon 7/8 fractional rig with lazyjacks
Material Mast	Alucarbon white-painted carbon fibre
Großsegel	Quantum fully battened spectra
Durchelatted großsegel	Spectra, with 3 reefs fitted
Rollref Baum	Alucarbon white-painted carbon fibre with hayrack stracking syst
Genua	Furling hi-cut yankee/genoa spectra carbon
Rollreffanlage	ja
Stagesegel	Spectra carbon, reefable
Großer Klüver	Furling hi-cut
Reff Vorrichtung	Reffleinen
Baumniederhohler	ja
Primare Schot Winschen	ja
Genua Schotwischen	ja
Fall Winschen	ja
Reff Wunsch	ja
Multifunktional Winschen	ANTAL stainless steel, 2xW70 2 speed electric self-tailing,



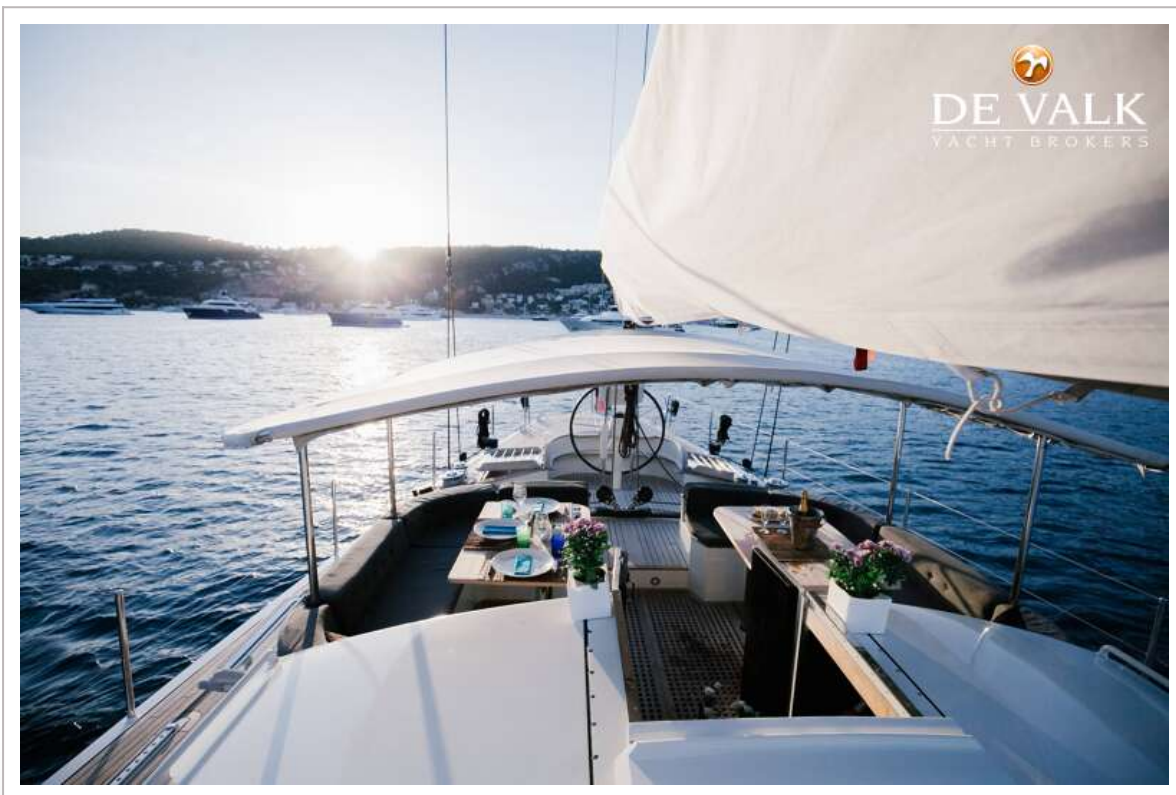
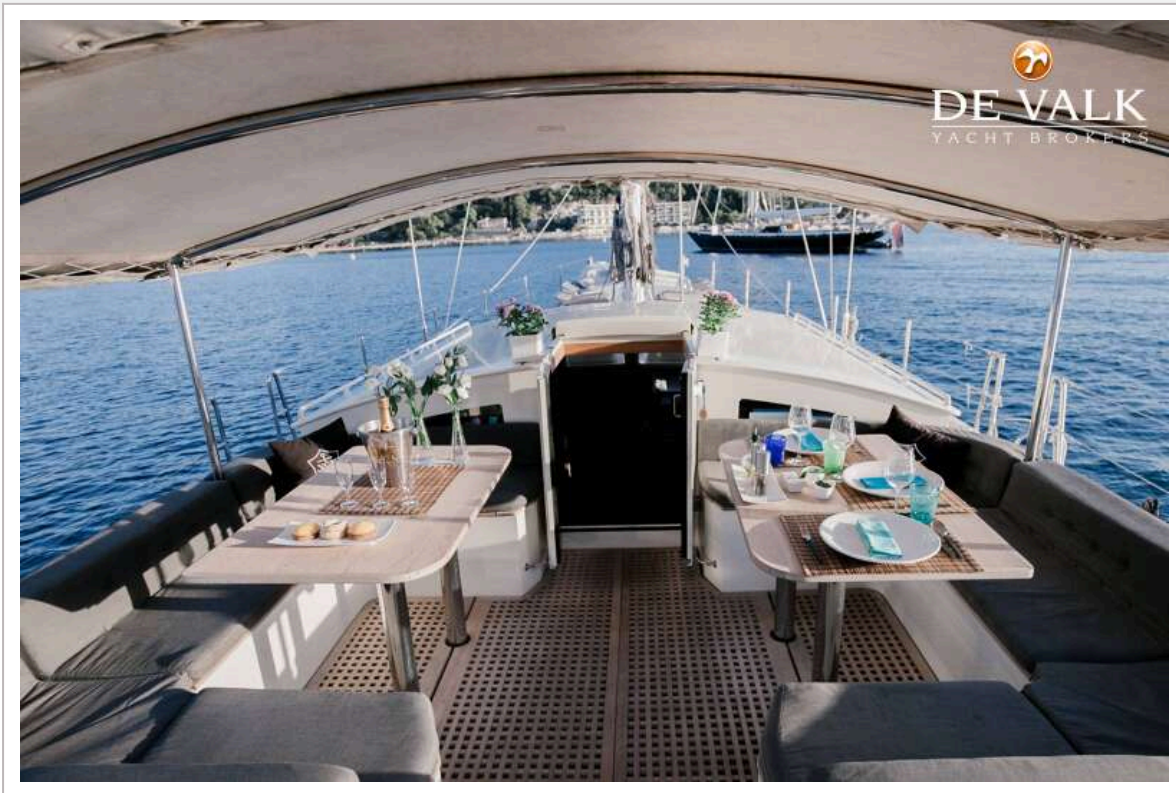
TRULY CLASSIC 90



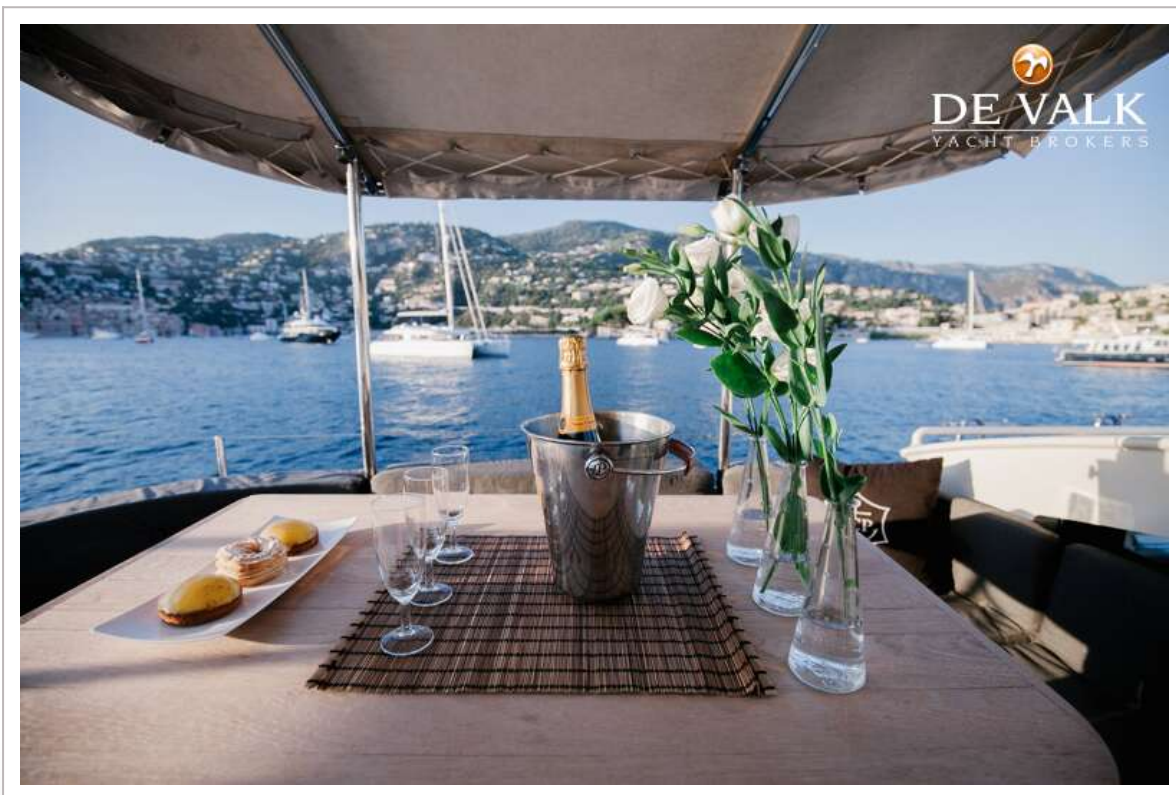
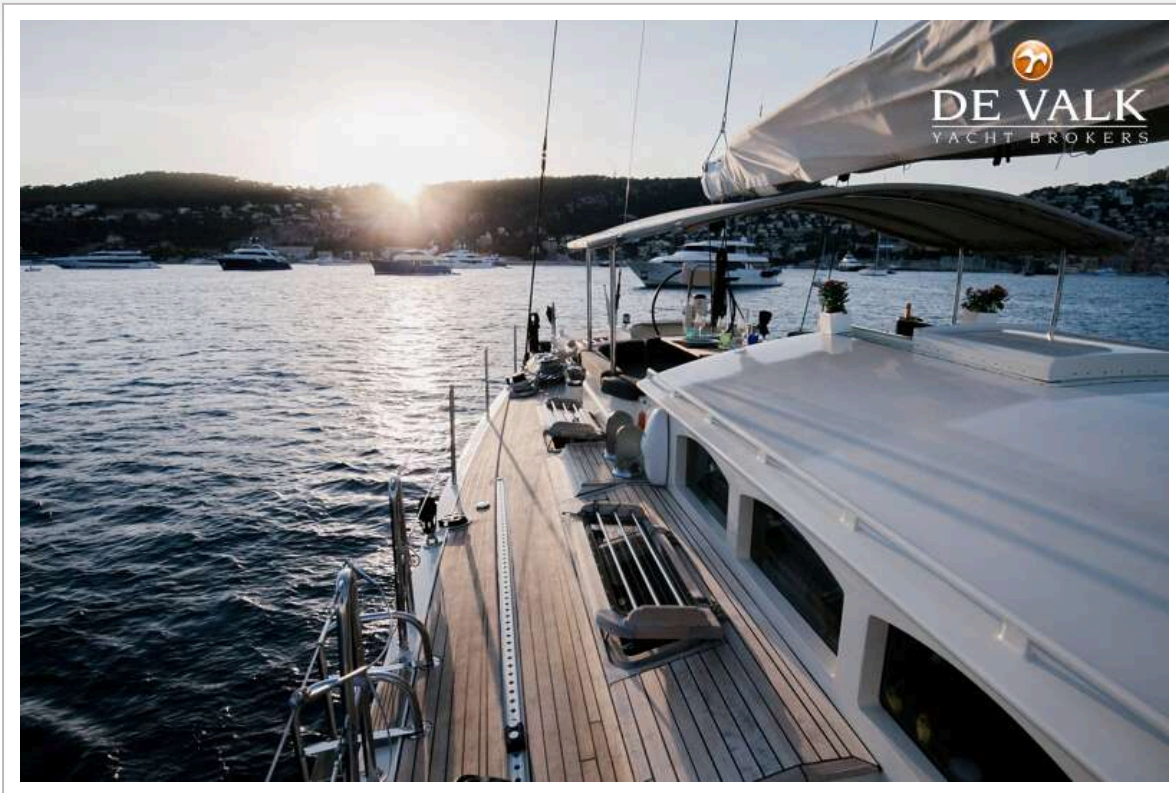
TRULY CLASSIC 90



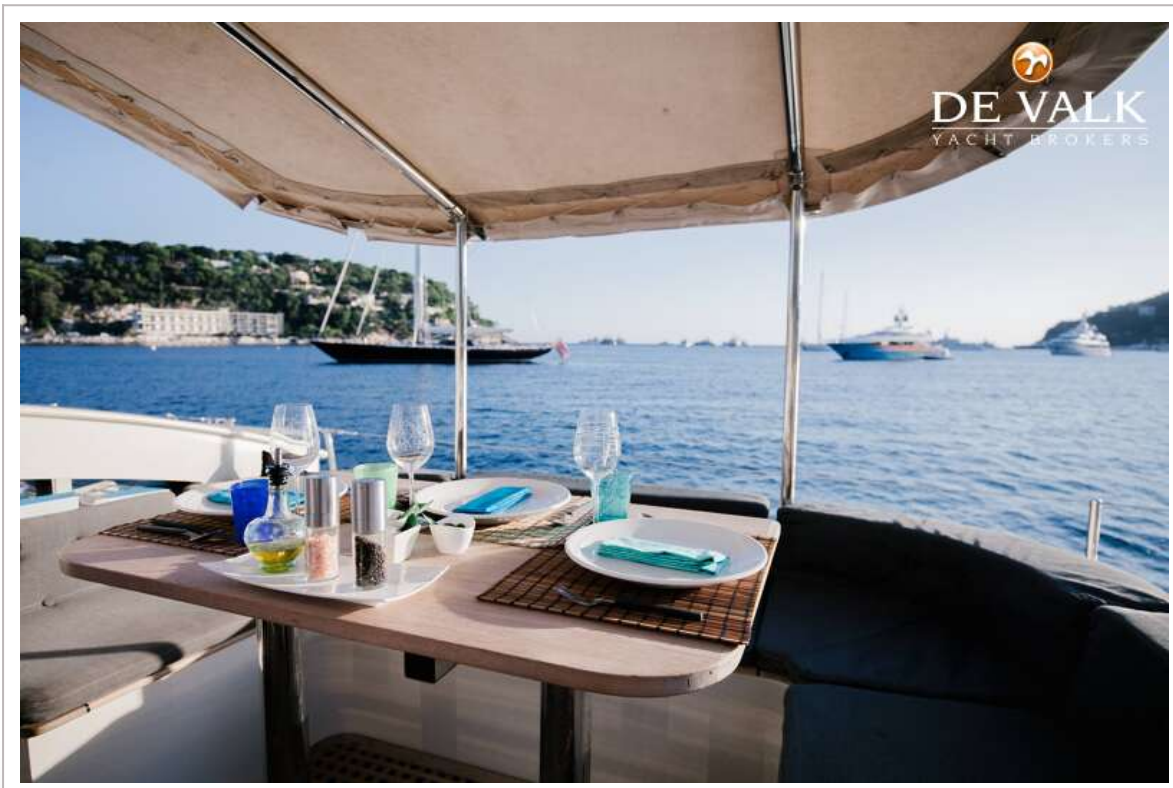
TRULY CLASSIC 90

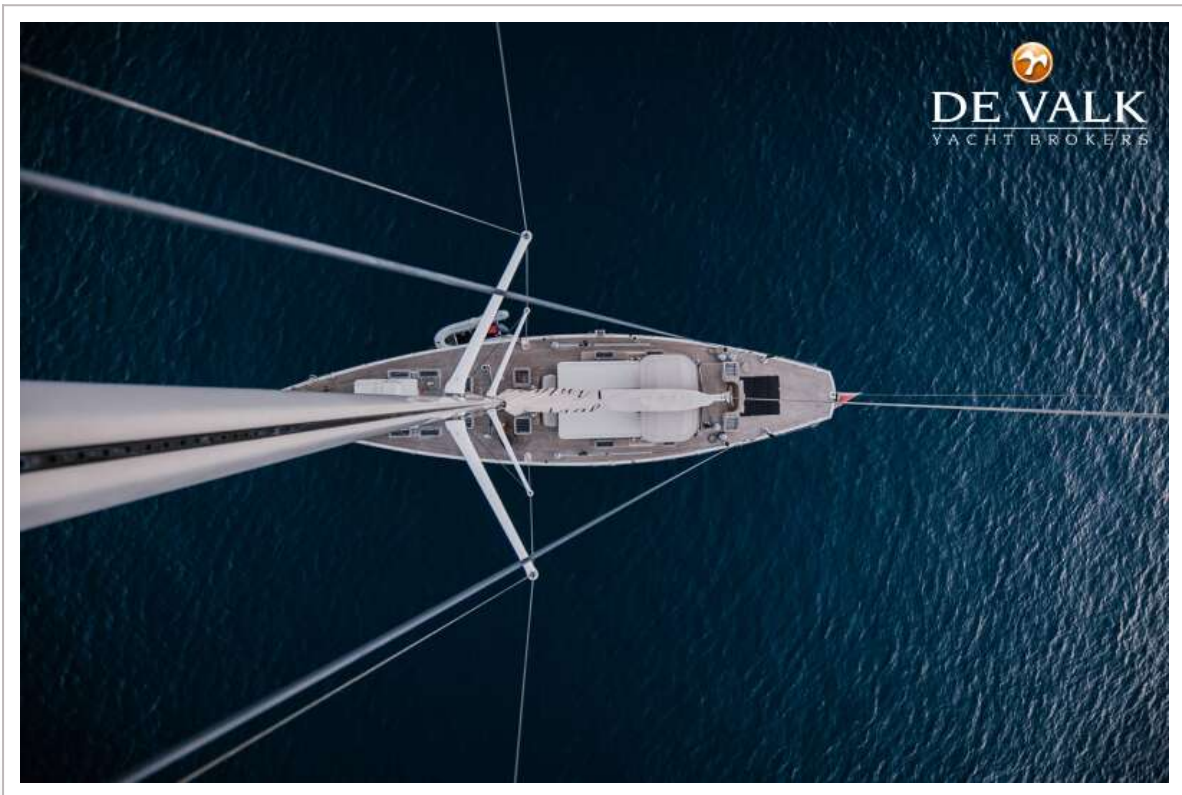


TRULY CLASSIC 90



TRULY CLASSIC 90





TRULY CLASSIC 90



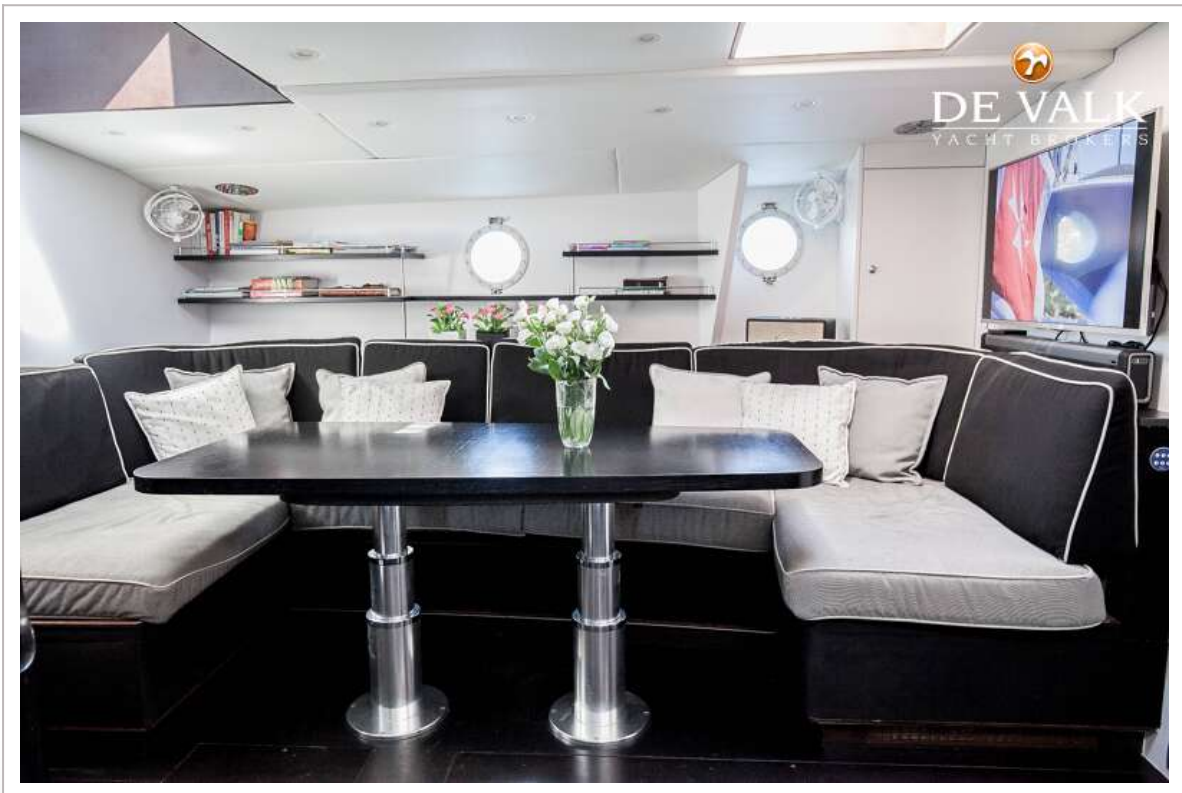
TRULY CLASSIC 90



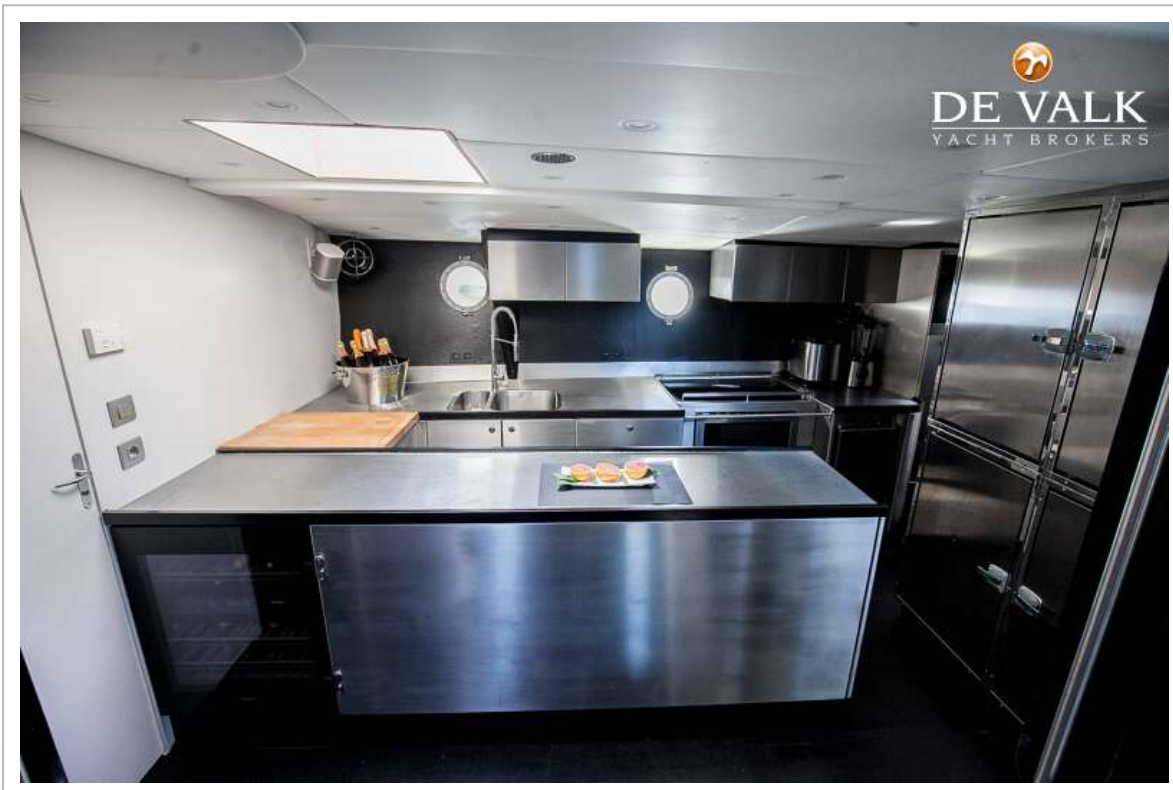
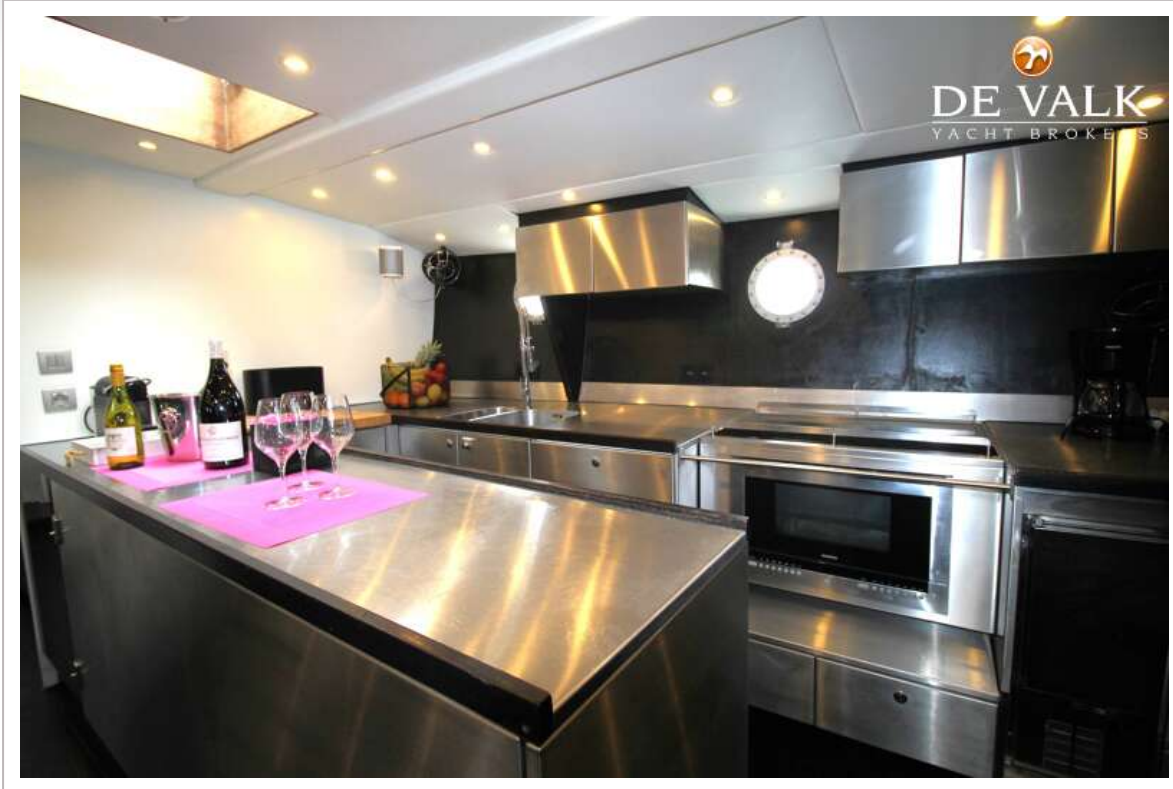
TRULY CLASSIC 90



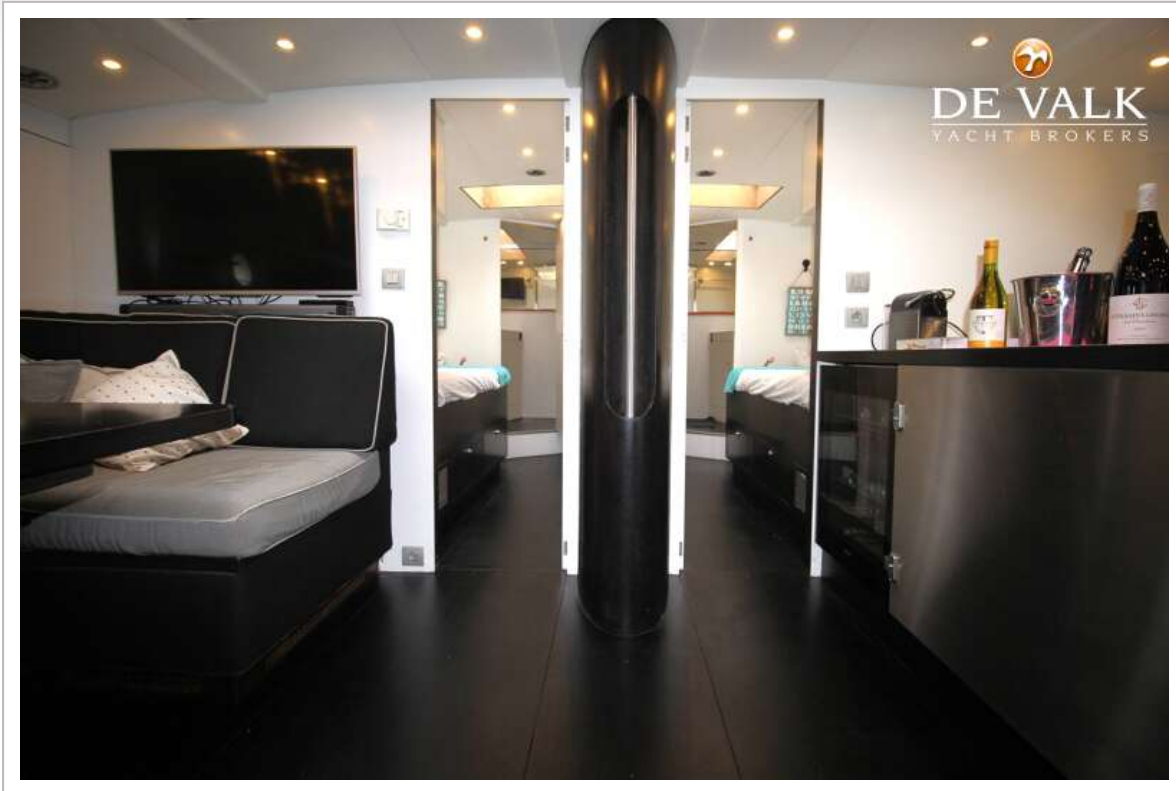
TRULY CLASSIC 90



TRULY CLASSIC 90



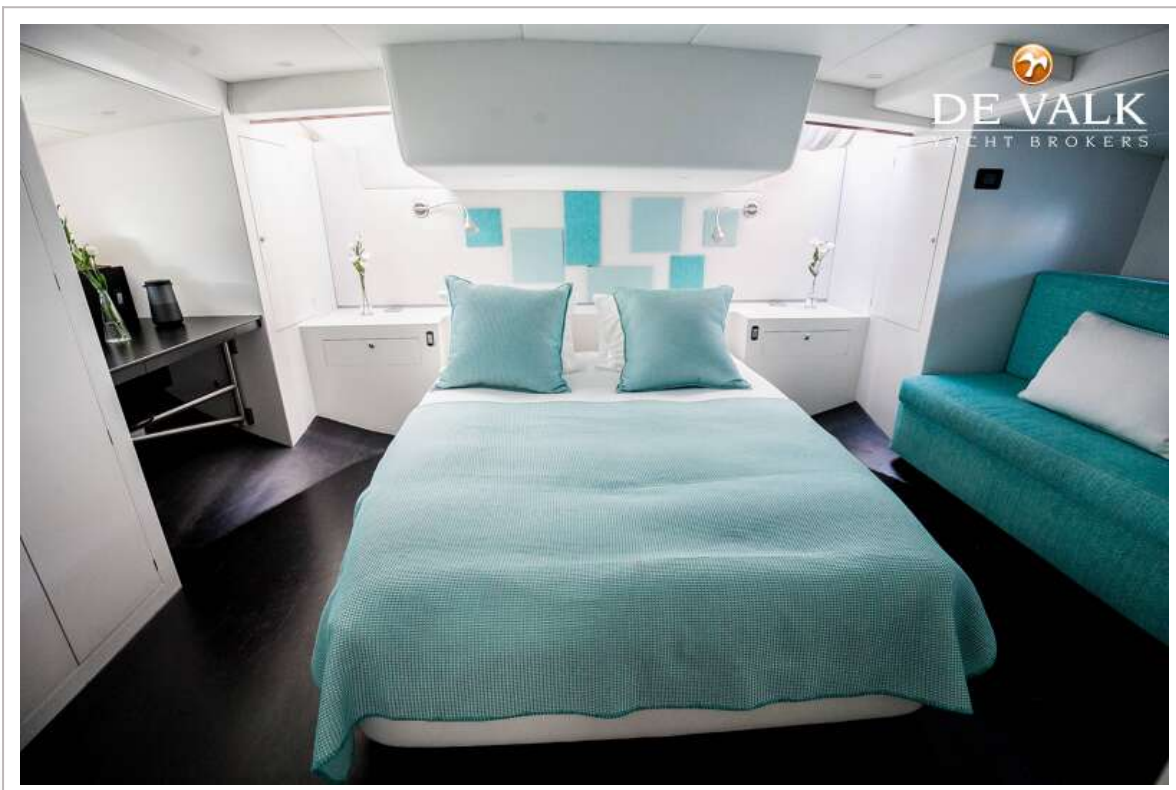
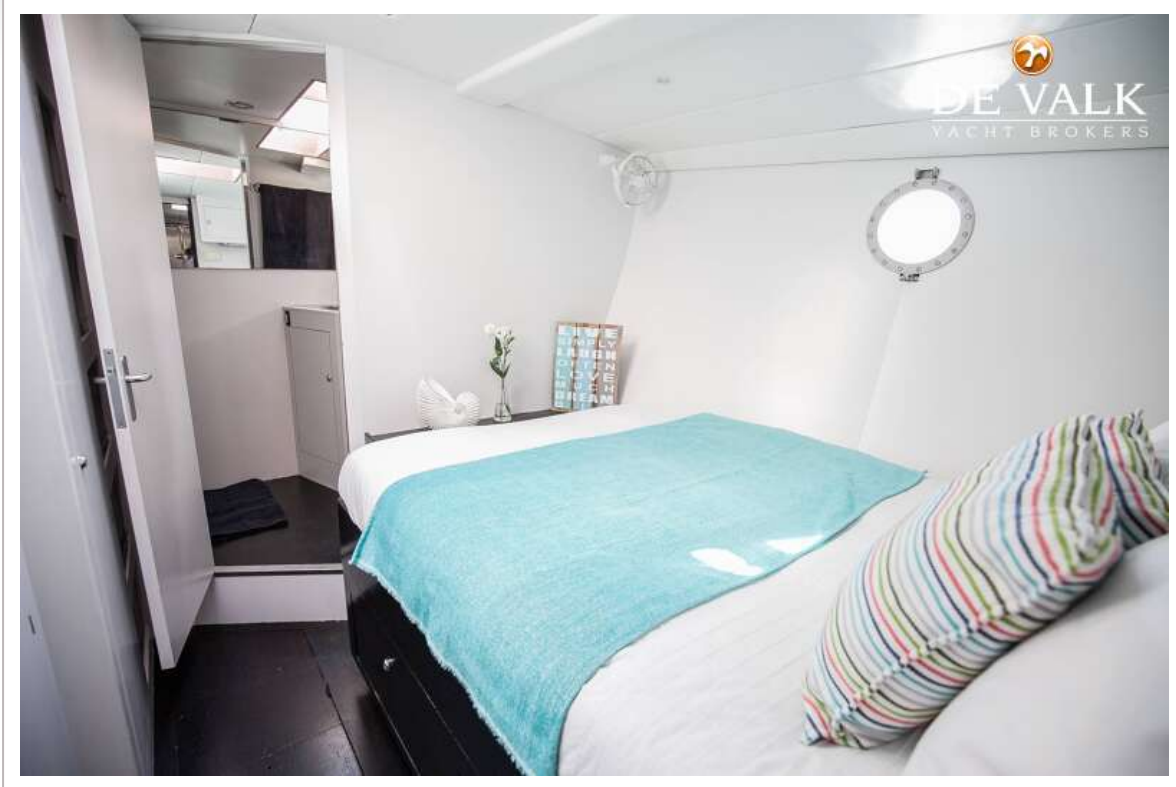
TRULY CLASSIC 90



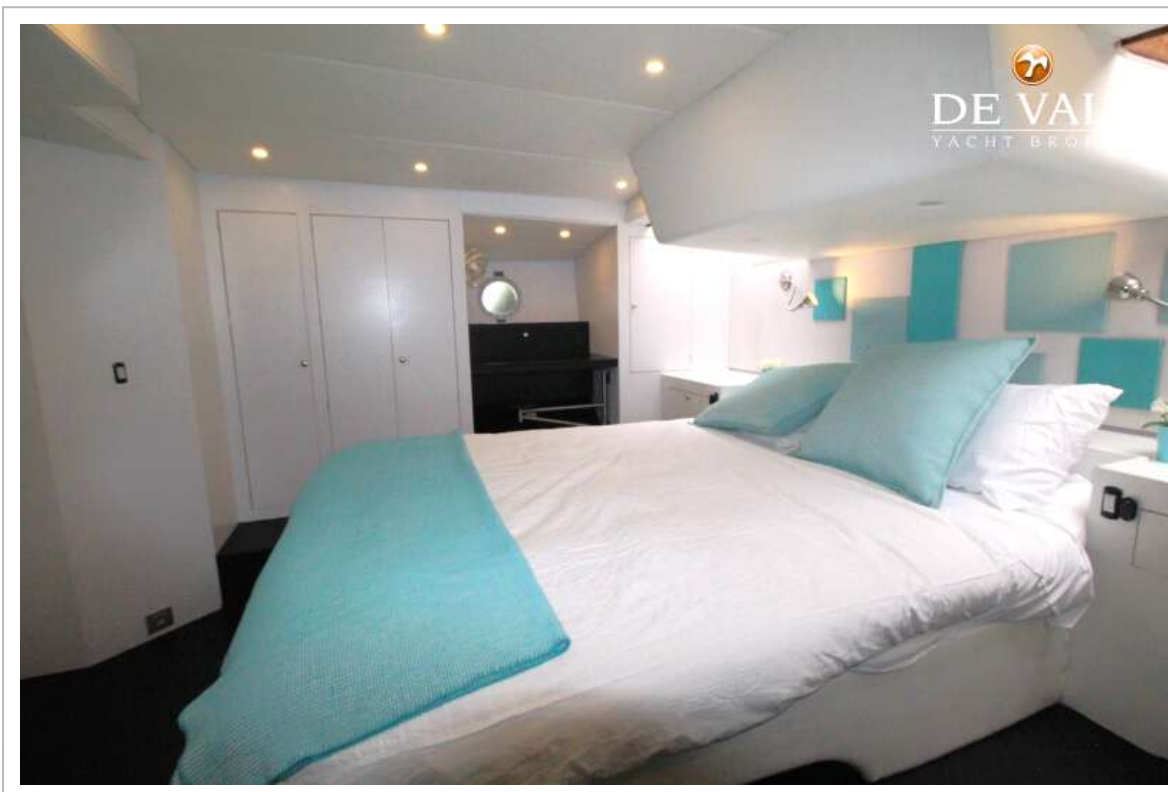
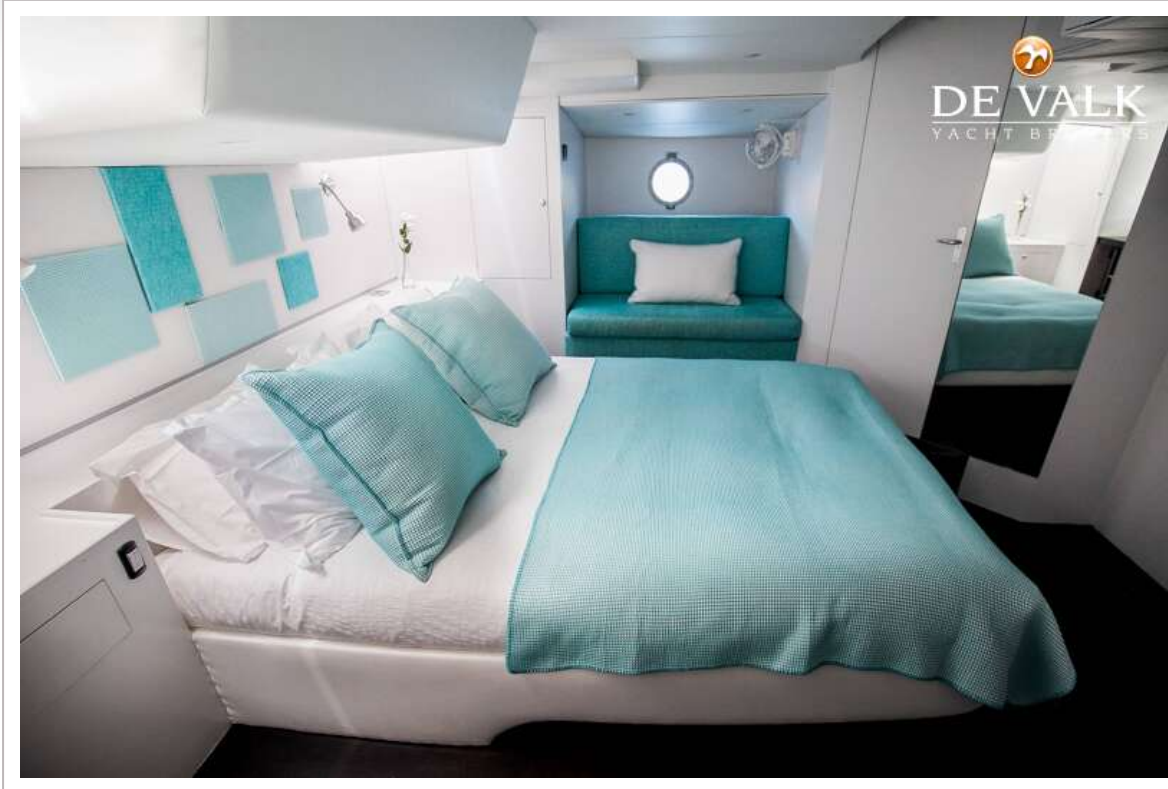
TRULY CLASSIC 90



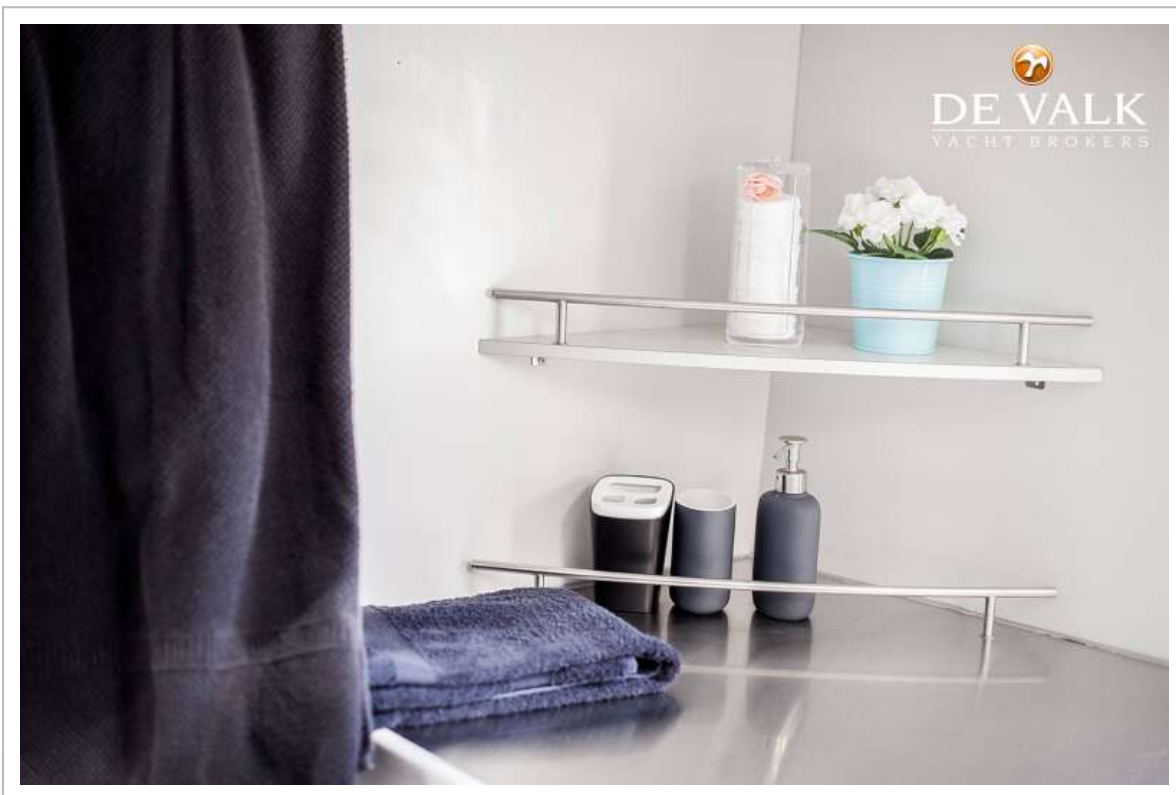
TRULY CLASSIC 90



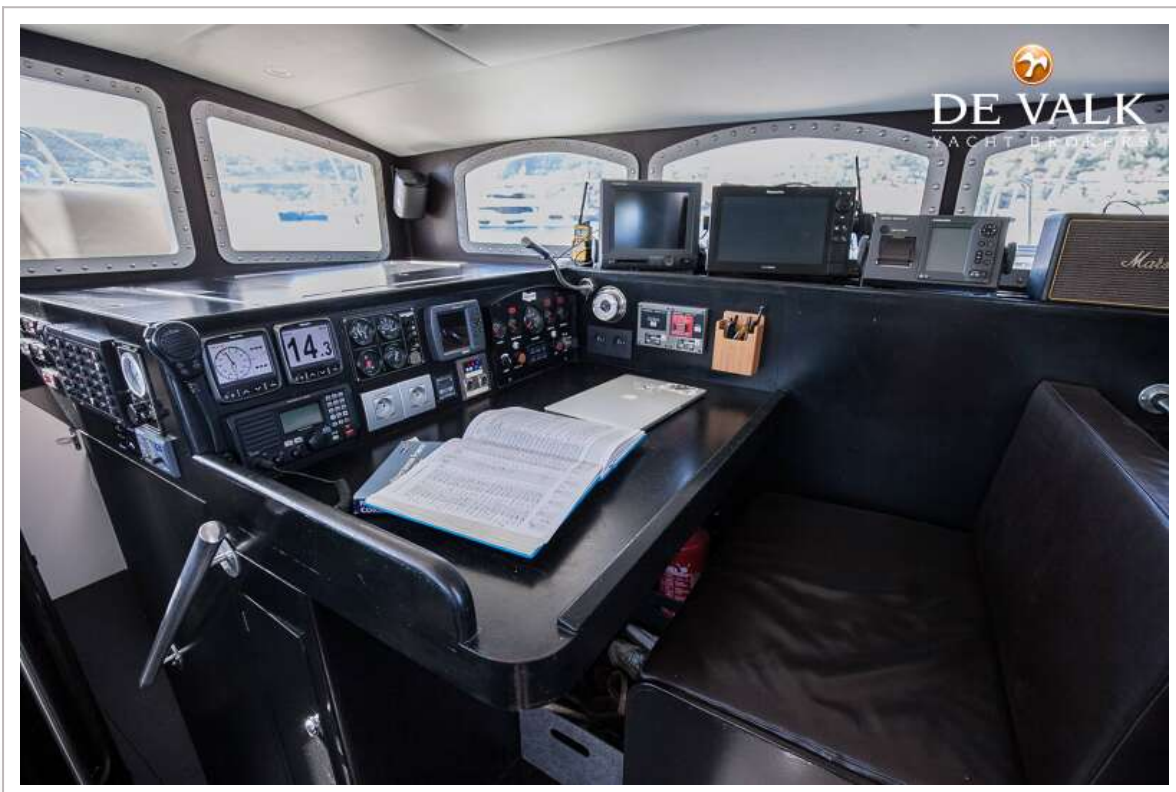
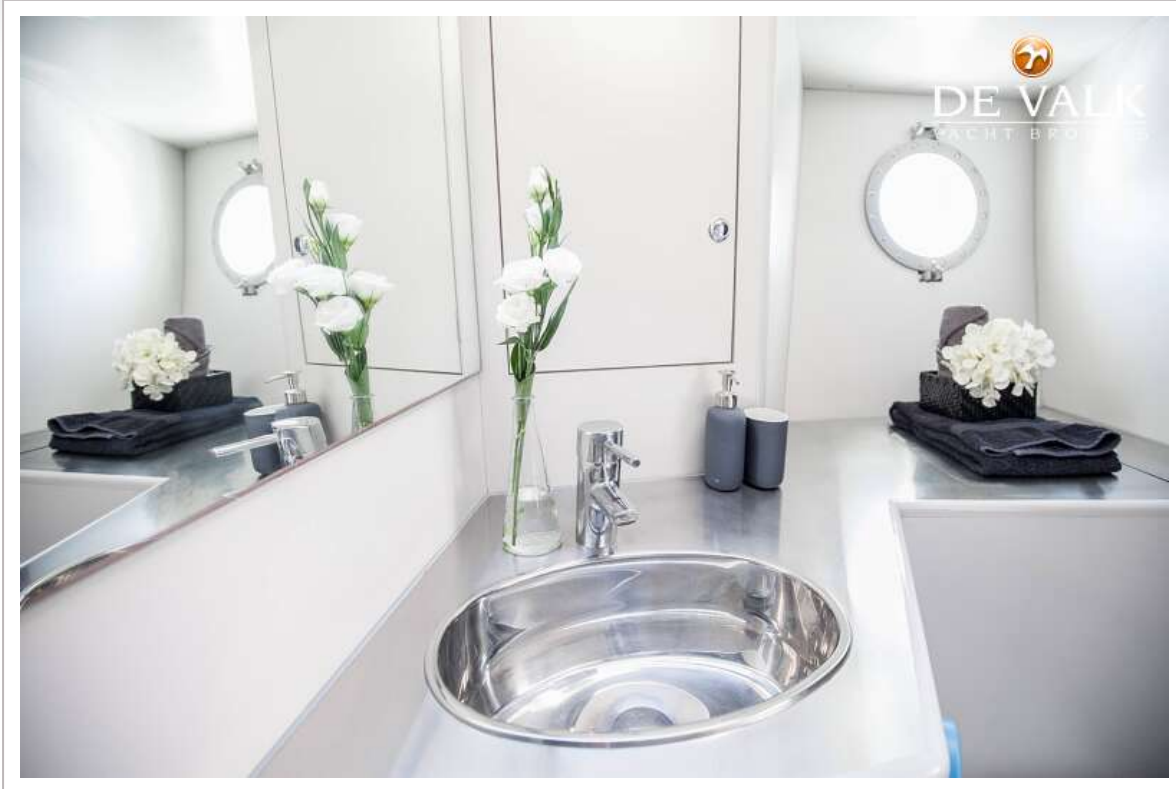
TRULY CLASSIC 90



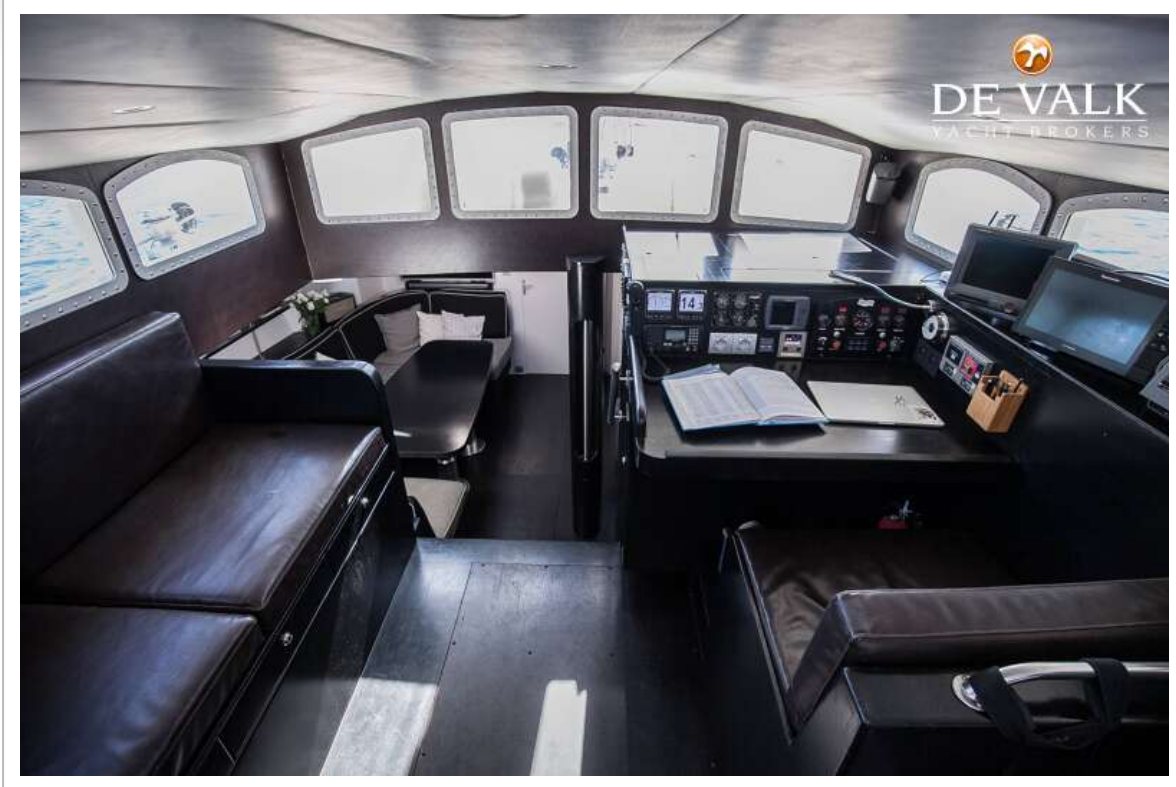
TRULY CLASSIC 90



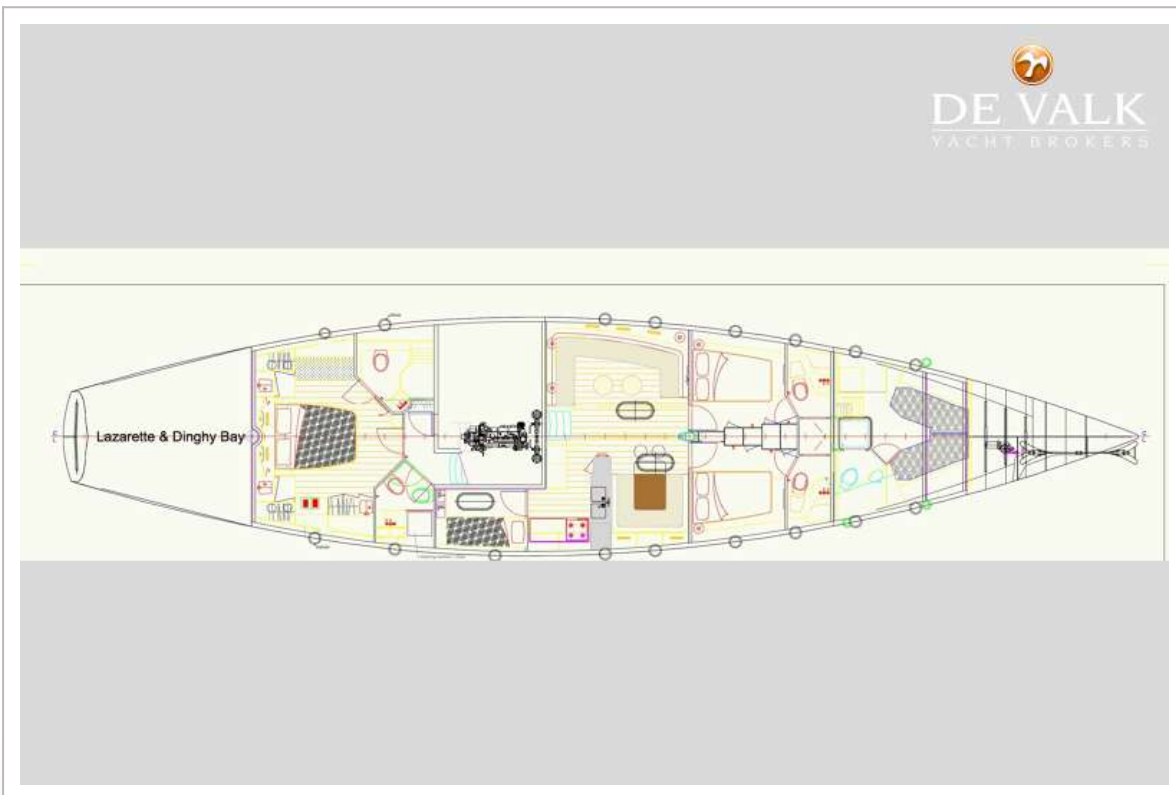
TRULY CLASSIC 90



TRULY CLASSIC 90



TRULY CLASSIC 90



TRULY CLASSIC 90

