



DE VALK  
YACHT-BROKERS



CONCORD 47.5



DE VALK  
YACHT BROKERS

## KOMMENTARE DES MAKLERS

Concord 47.5 DS "Northern Light" built in 1999 and launched in 2000 by Alumarine B.V. in The Netherlands. Designed by Dick Koopmans and B. Busman. This aluminium deck saloon sailing yacht is bought by her current owner in 2018 and he directly brought her to De Gier Maritiem for a large refit 2018-2019. (new engine, generator, navigation equipment, new paint, sails, rigging etc) After completing the refit the owner did a lot of long range blue water cruising. Now "Northern Light" is for sale, ready to go on new adventures, currently located in Panama.

*Reinier van der Wolf*

## TECHNISCHE DATEN

<b>Maße</b>	14.45 x 4.36 x 2.15 (m)	<b>Werft</b>	Alumarine B.V., Sint Annaland
<b>Baujahr</b>	1999	<b>Kabinen</b>	2
<b>Material</b>	Aluminium	<b>Kojen</b>	6
<b>Motor(en)</b>	1 x Volvo Penta D3-110I-H diesel	<b>PS/kW</b>	110.00 (PS), 80.96 (kW)
<b>Angebotspreis</b>	€ 425.000 (MwSt. Nicht bezahlt)	<b>Liegeplatz</b>	contact Monnickendam

## KONTAKT

<b>Verkaufsbüro</b>	De Valk Monnickendam B.V.	<b>Telefon</b>	+31 (0)299 65 63 50
<b>Adresse</b>	Hoogedijk 6 1145 PM Katwoude NL	<b>E-Mail</b>	monnickendam@devalk.nl

## HAFTUNGSAUSSCHLUSS

Diese Angaben erfolgen nach bestem Wissen, können jedoch nicht garantiert werden.



## ALLGEMEIN

<b>Modell</b>	CONCORD 47.5
<b>Typ</b>	Segelyacht
<b>Rumpflänge (m)</b>	14,45
<b>Wasserlinienlänge (m)</b>	11,75
<b>Breite (m)</b>	4,36
<b>Tiefgang (m)</b>	2,15
<b>Durchfahrtshöhe (m)</b>	19,81
<b>Baujahr</b>	1999
<b>Lancierung</b>	2000
<b>Werft</b>	Alumarine B.V., Sint Annaland
<b>Land</b>	Niederlande
<b>Entwerfer</b>	Dick Koopmans / B. Busman
<b>Gewicht (t)</b>	20
<b>Ballast (Ton)</b>	5,7 tonnes, lead in aluminium
<b>CE Norm</b>	A
<b>Rumpfmateriäl</b>	Aluminium
<b>Rumpffarbe</b>	Blau   Dark Blue hull painted in 2019 by De Gier in Enkhuizen/NL
<b>Rumpfform</b>	Rundspant
<b>Art Kiel</b>	Flossen Kiel
<b>Material Aufbauten</b>	Aluminium   White coloured superstructure, painted in 2019 by De Gier/NL
<b>Stossliste</b>	ja
<b>Deckmaterial</b>	Aluminium
<b>Deck Finish</b>	Teak
<b>Pflicht Bedeckung</b>	Teak
<b>Antifouling (Jahr)</b>	11-2024. Underwater ship sandblasted in the winterperiod 2018/2019 and new underwater system build on by De Gier Maritiem in The Netherlands
<b>Dorado Belufter</b>	4 x stainless steel dorades
<b>Fenster Einfassung</b>	Aluminium



<b>Fenster Material</b>	Sicherheitsglas   10MM
<b>Decksluke</b>	8 x Goiot deckhatch with aluminium frame
<b>Isolation</b>	Schaum
<b>Treibstofftank (Liter)</b>	Aluminium   Approx. 450 litre
<b>Füllstandsanzeige (Treibstofftank)</b>	Digital BEP system
<b>Treibstof Tagestank (Liter)</b>	Aluminium   Approx. 187 litre (new 2018/2019 by De Gier Maritiem)
<b>Trinkwassertank (Liter)</b>	Aluminium   Approx 630 litre (2x315L)New 2018/2019, tanks cleaned 11-2023.
<b>Füllstandsanzeige (Trinkwasser)</b>	Digital BEP system
<b>Fäkaelien Tank (Liter)</b>	Aluminium   Approx. 260 litre
<b>Füllstandsanzeige (Fakaelientank)</b>	Digital BEP system
<b>Grauwassertank (Liter)</b>	ja
<b>Füllstandsanzeige (Grauwasser)</b>	Digital BEP system
<b>Radsteuerung</b>	Whitlock
<b>Aussen Steuerung</b>	ja
<b>Not-Pinne</b>	ja
<b>Weitere Info</b>	Hull built in ABS certified aluminium type ALMG 4.5 MnH 321 in the following measurements: Hull under waterline 8MM. Hull above waterline 8MM. Keelplating 8MM. Deck, superstructe and cockpit 6MM. Superstructure sides 6MM. Tanktops and manhole covers 6MM. Engine mounts 8 and 20MM. Mast foundation 80 and 100MM.

## UNTERKUNFT

<b>Kabinen</b>	2
<b>Kojen</b>	6
<b>Innen</b>	Teak   Burma teak
<b>Fussboden</b>	Holz
<b>Offenen Cockpit</b>	ja
<b>Decksalon</b>	ja
<b>Salon</b>	with comfortable around sit and panorama view
<b>Standhöhe Salon (m)</b>	Approx. 1.90m



<b>Heizung</b>	wasserheizung Kabola
<b>Klima Anlage</b>	Klima mit Ruckzyklus   Westerbeke air-conditioning forepeak/main cabin/aft cabin
<b>Tür zum Cockpit</b>	ja
<b>Kombüse</b>	ja
<b>Arbeitsfläche</b>	Fliesen
<b>Spülbecken</b>	Edelstahl   2x stainless steel sink
<b>Herd</b>	Induktion   Kuppersbusch 4 burner induction stove
<b>Dunstabsauge</b>	ja
<b>Mikrowelle/Backofen Kombi</b>	Kenwood 8 in 1 multifuncion oven/air fryer
<b>Kuhlschrank</b>	Isotherm 160 L. stainless steel with 3 separate drawers with 10 cm of insulation
<b>Gefrier Truhe</b>	Isotherm 120 L. stainless steel with 2 drawers with 20 cm of insulation
<b>Warmwasser System</b>	uber Heizung
<b>Wasserdruck System</b>	elektrisch
<b>Hand und/oder Fusspumpe</b>	At one sink in the galley
<b>Eignerkabine</b>	Doppelbett
<b>Kleiderschrank</b>	ja
<b>Badezimmer</b>	getrennt
<b>Toilet</b>	Jabsco
<b>Toilette System</b>	handbetrieb
<b>Handwaschbecken</b>	ja
<b>Dusche</b>	ja
<b>Gästekabine 1</b>	V-Bett
<b>Kleiderschrank</b>	ja
<b>Waschmaschine</b>	Natural instinct. Not a permanent build in installation
<b>Trockner</b>	Spindle. Not a permanent build in installation

## MASCHINEN

<b>Motoranzahl</b>	1
<b>Marke</b>	Volvo Penta



<b>Typ</b>	D3-110I-H
<b>PS</b>	110
<b>kW</b>	80.96
<b>Kraftstoffart</b>	Diesel
<b>Installiert im Jahr</b>	2019
<b>Kühlungssystem Motor</b>	indirekte Wärmetauscher
<b>Antrieb</b>	Schraubenwelle
<b>Motor bedienung</b>	elektrisch Volvo Penta
<b>Gewende getriebe</b>	Volvo Penta HS68IV-A
<b>Bugschraube</b>	elektrisch   Max Power (2011)
<b>Propeller Typ</b>	Segelstellung   Max prop automatic feathering propeller
<b>Propellerblätter</b>	5 bladed
<b>Material Propellerwelle</b>	Edelstahl
<b>Hand Bilgenpumpe</b>	ja
<b>Elektrische Bilgenpumpe</b>	ja
<b>Bilge Alarm</b>	ja
<b>Generator</b>	Fisher Panda 8000i (2019)
<b>Betriebsstunden Generator</b>	803 hrs. (18-06-2025)
<b>Starterbatterie</b>	Optima 12V
<b>Versorgungsbatterie</b>	450 ah Mastervolt batteries
<b>Generatorbatterie</b>	Optima 12V
<b>Bugschraubebatterie</b>	260 ah Windlass/bow thruster batteries
<b>Wind generator</b>	D400 windgenerator
<b>Solar panele</b>	300W solar panel and 600W solar panel
<b>Landstrom</b>	mit Kabel
<b>Wasserbereiter</b>	Schenker Smart 60 watermaker 60ltr/hr, 157 hrs (18-06-2025), Wycomar UV250 and water filter system
<b>Weitere Info</b>	Watts & Sea hydro generator 300W
<b>Weitere Info</b>	Water separator filter between the main fuel tank and day tank
<b>Weitere Info</b>	Sound prove insulation in the machine room

## NAVIGATION



Kompass	Liquid compass
Tiefenanziege	B&G
3d echoloth	B&G
Logge	B&G
Windlupe anzeige	B&G
UKW	Matrix Standard VHF
Portabel UKW	2x Icom VHF handheld
Autopilot	B&G
Windfahne Steuerung	Hydrovane with stubby vane
Ruderwinkel Anzeige	In the screen of the autopilot
Radar	B&G
GPS	B&G
Plotter	B&G
Radio Empfänger	Icom SSB radio
Weitere Info	Iridium go, Iridium 9555 satelite phone, Starlink

## AUSRÜSTUNG

Feste Haube	ja
Kuchenbude	A sail over the cockpit and front deck
Bimini	Aluminium bimini with rain catchment
Cockpit Tisch	Foldable teak table
Badeplattform	ja
Badeleiter	Edelstahl
Heck-Tur	ja
Heckdusche	Warm/cold
Anker	Bruce   30 KG Stainless steel Bruce anchor
Ankerkette	100m / 10mm stainless steel chain
Anker 2	Bruce   28KG Stainless steel Bruce anchor
Ankerkette	60m / 10mm stainless steel chain
Ketten Zähler	Quick chain counter, never used by the current owner. (function not known) New remote for the main windlass available, need to be installed.



<b>Ankerwinde</b>	elektrisch   1 x 3000 Simpson Lawrence and 1 x 1500 Simpson Lawrence
<b>Deckwasche</b>	ja
<b>Beiboot</b>	fest Rumpf   Caribe 2.90 m aluminium inflatable rib (2023)
<b>Ausserborder</b>	15HP Yamaha 2-stroke outboard (2023)
<b>Davits</b>	Edelstahl   Edson davits
<b>Davits bedienung</b>	handbetrieb
<b>See Reling</b>	Draht/Seil   Stainless steel pole and wire
<b>Rettungsinsel</b>	Container   HYF 6-person
<b>Rettungsinsel (Pers)</b>	6
<b>Letzte Wartung Rettungsinsel</b>	Next service 11/2026
<b>Rettungsboje</b>	2 x Plastimo horseshoe life boyes
<b>Markierboje</b>	1 x Danbuoy, 1 x life ring
<b>Leinenschneider</b>	ja
<b>Fenderkissen</b>	ja
<b>Festmacher</b>	ja
<b>Reserve Teilen</b>	ja
<b>Werkzeug</b>	ja
<b>TV</b>	Salora 22"
<b>Radio-CD Spieler</b>	Pioneer
<b>Feuerloscher</b>	5x
<b>Weitere Info</b>	- 2 x 12 litre and 2 x 25 litre cannistors for patrol. - 6 x 25 litre cannistors for diesel
<b>Weitere Info</b>	Bauer junior dive compressor, 2 x 10 litre steel dive cylinders
<b>Weitere Info</b>	Droque anchor with bridle and rope   Magna gas BBQ with 2 x gas cylinders 2 x Aqua Marine inflatable SUP's 1 x Normal Bosun chair 1 x Bosun/climb gear with self supported safety gear Grab bags with all emergency equipment require for Class A vessel
<b>RIGG</b>	
<b>Rig</b>	Kutter
<b>Stehendes Gut</b>	Drahtseil   More information in the extra informtion



<b>Marke Mast</b>	Reckmann   (2005)
<b>Material Mast</b>	Aluminium
<b>Salings</b>	2x aluminium spreaders
<b>Großsegel</b>	North Sails (2019), North Sails storm sail (2019)
<b>Großsegel-Persenning</b>	Lazy jack system and mainsail cover
<b>Latten traveller</b>	Harken
<b>Durchelatted großsegel</b>	ja
<b>Kutter Stag</b>	Reckmann Hydraulic furling
<b>Großstagesegel</b>	North Sails (2019)
<b>Fock</b>	North Sails
<b>Fock I</b>	North Sails
<b>Genua</b>	Reckmann Hydraulic furling, Genua (2019)
<b>Code Zero</b>	North Sails (2019)
<b>Spi</b>	North Sails (2019)
<b>Sturmfock</b>	North Sails (2019)
<b>Achterstag Spanner</b>	hydraulik   Navtec manual Backstay ajuster
<b>Baumniederhohler</b>	hydraulik   Navtec manual boomvang
<b>Winsch Schonbezug</b>	ja
<b>Spi-Baum</b>	Aluminium   2x
<b>Weitere Info</b>	5x Andersen 2speed ST o.w. 4 electric hydraulic
<b>Weitere Info</b>	Reckman electric hydraulic furling headsail system. Reckman electric hydraulic furling inner forestay system. Furling inner jib challenge Dacron. Navtec central pump system in the cockpit. Stainless steel granny bars at the mast New rigging placed by De Gier Maritiem in the winter 2018/2019. Last service and official check of the rigging 11-2023



# CONCORD 47.5



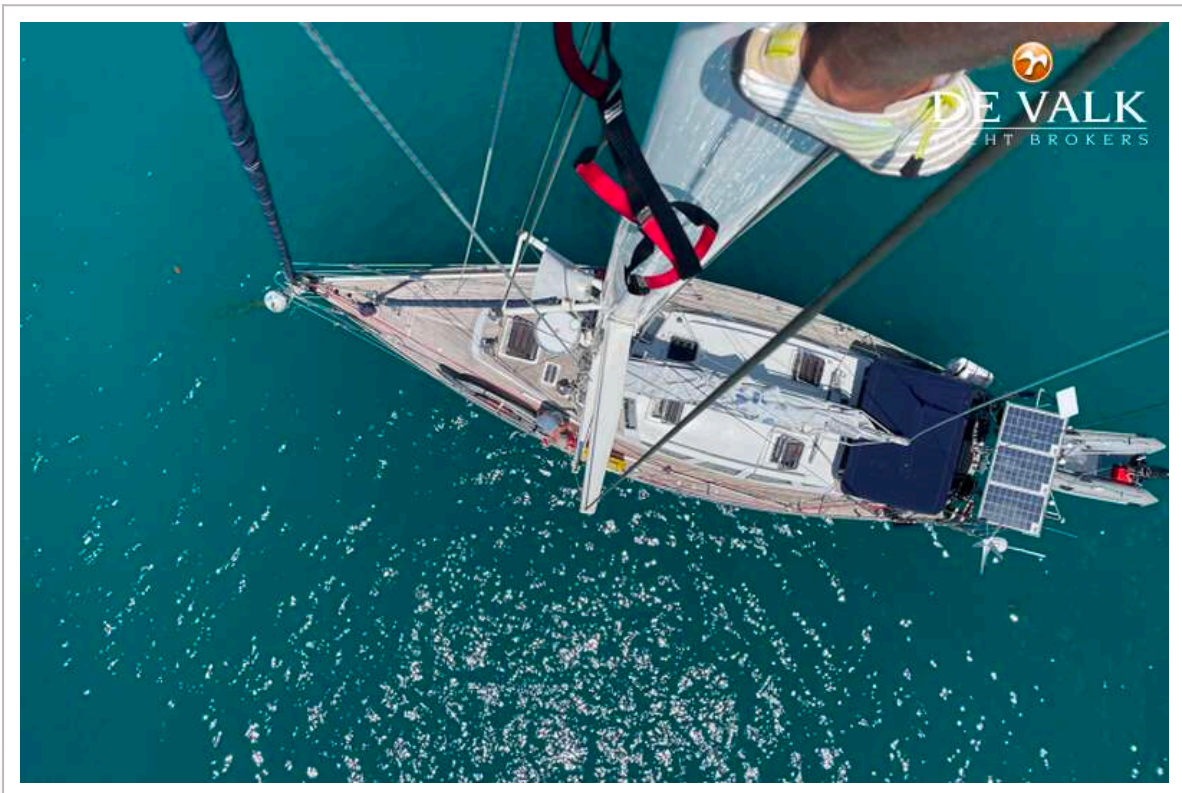
# CONCORD 47.5



# CONCORD 47.5



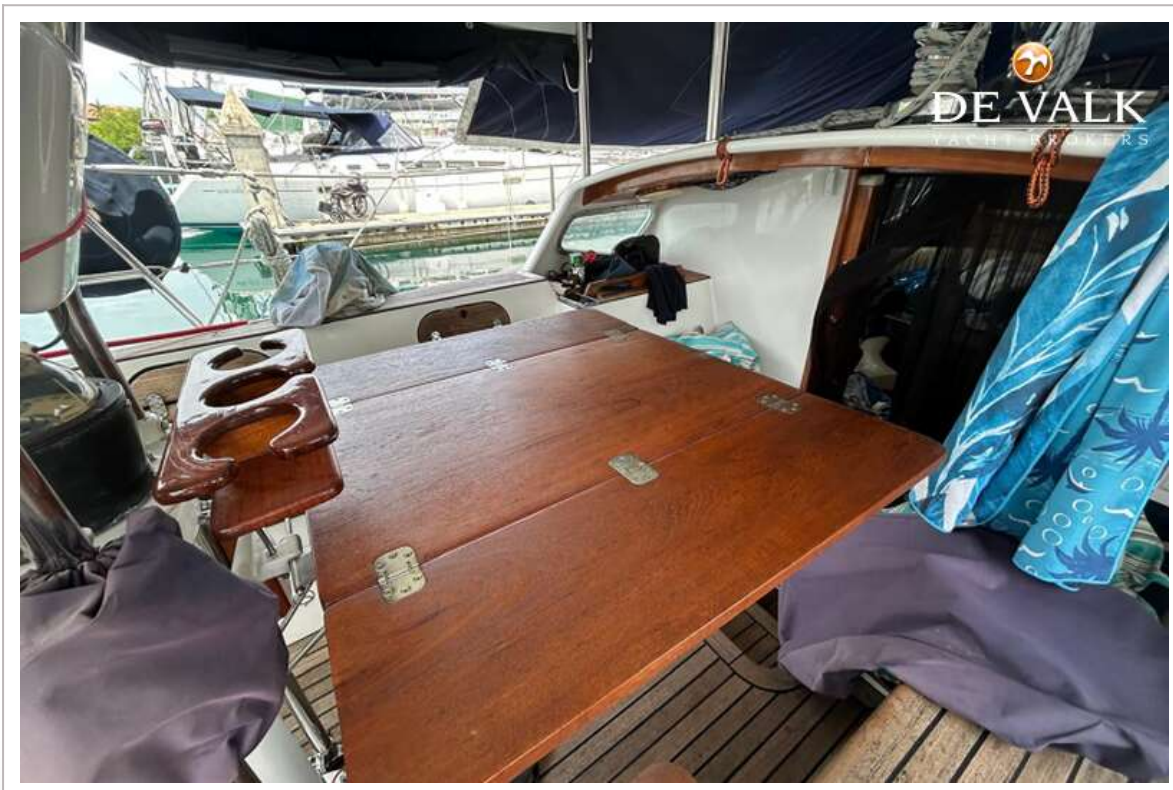
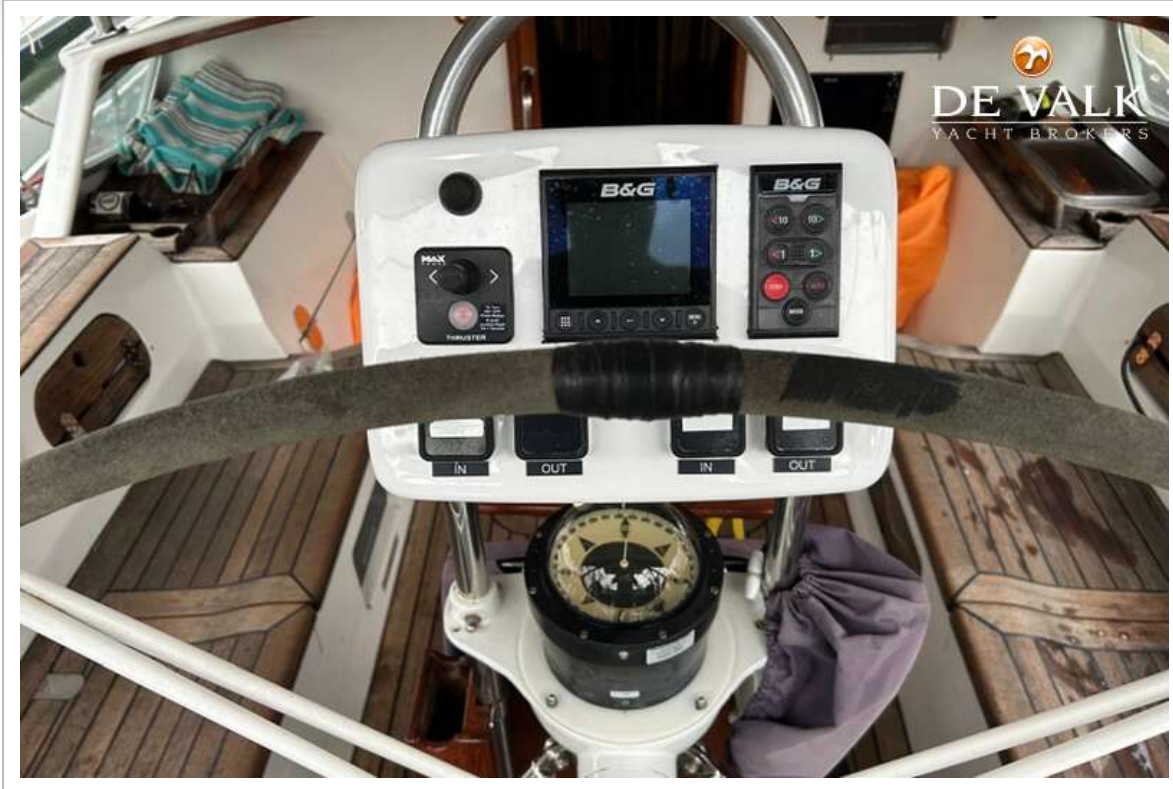
# CONCORD 47.5



# CONCORD 47.5



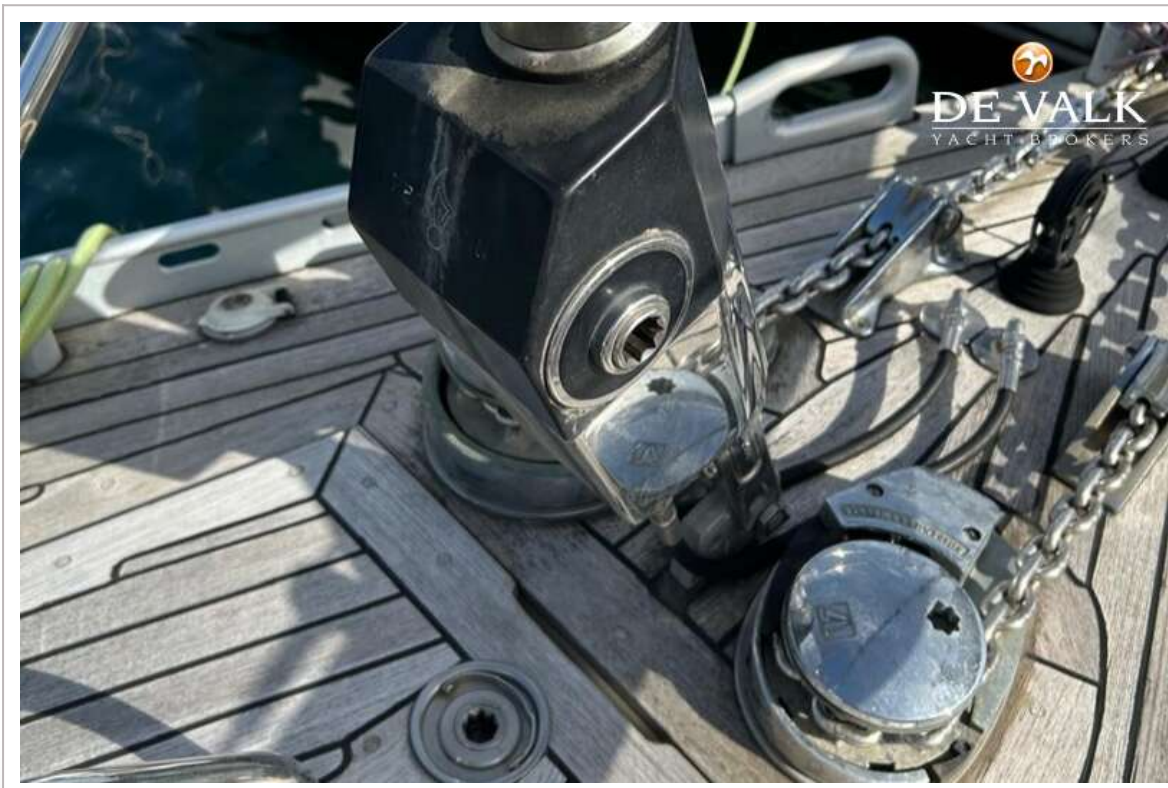
# CONCORD 47.5



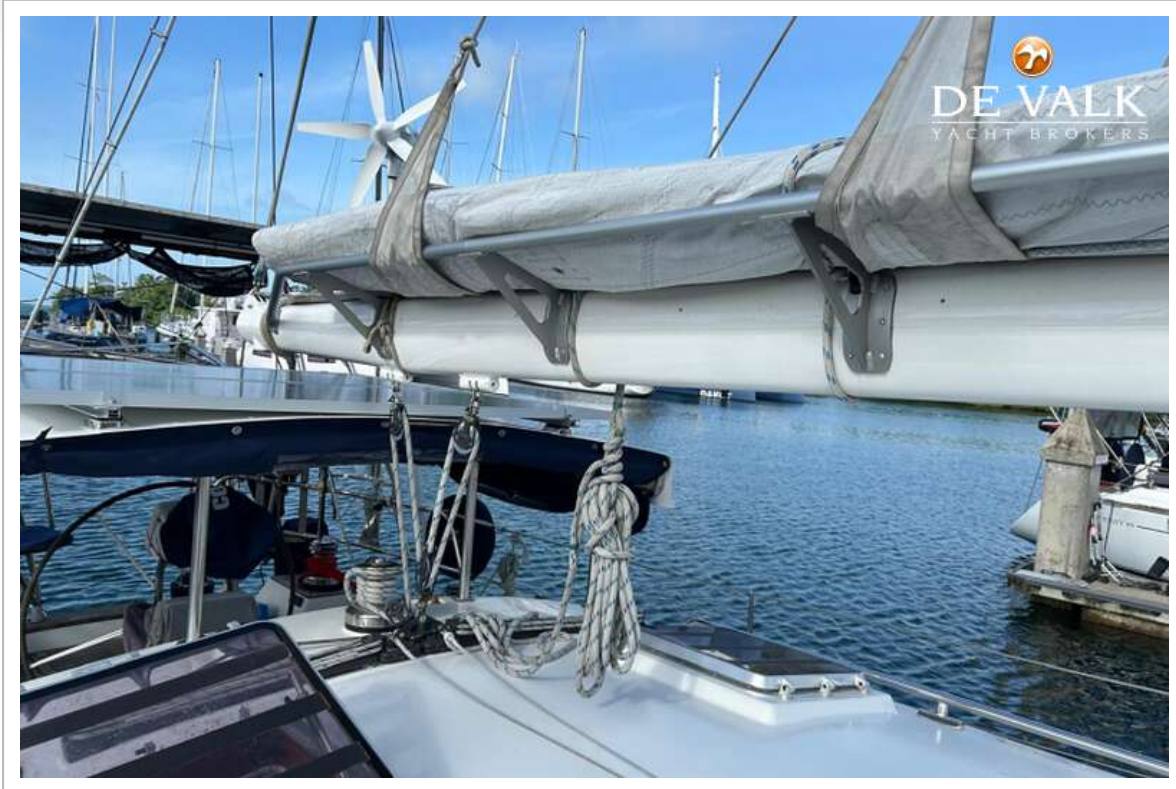
# CONCORD 47.5



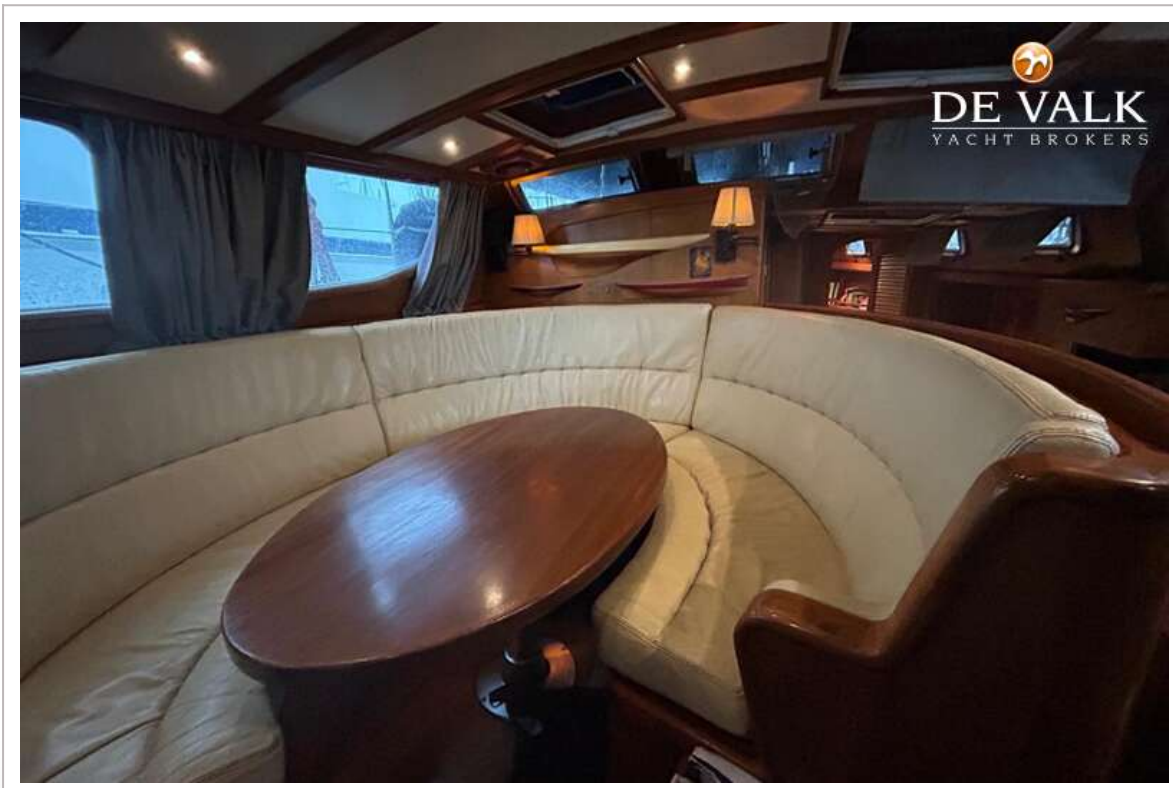
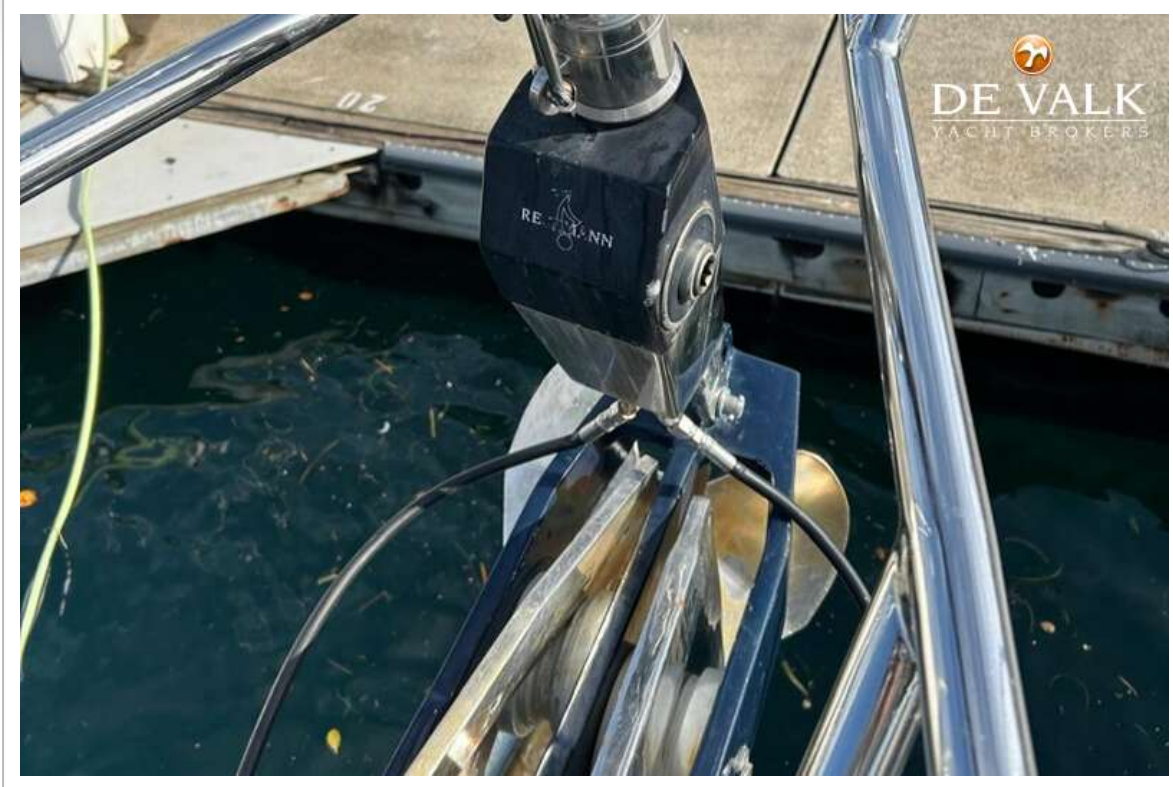
# CONCORD 47.5



# CONCORD 47.5



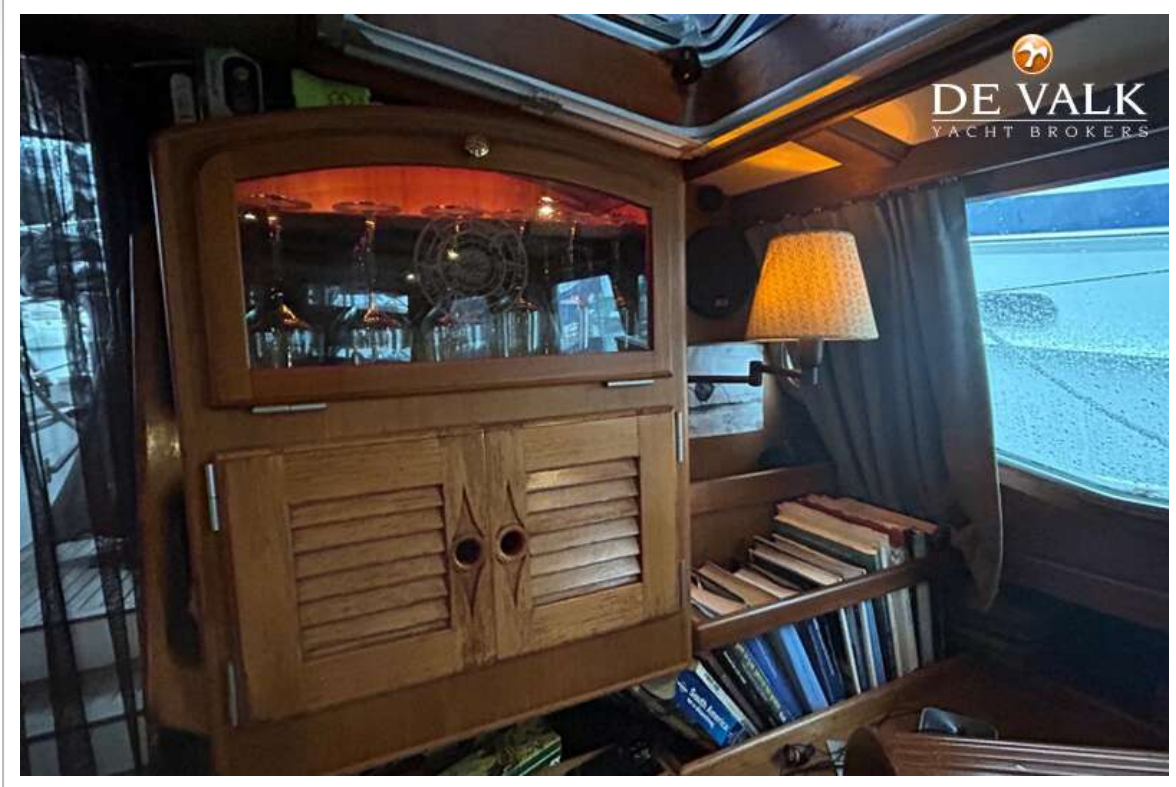
# CONCORD 47.5



# CONCORD 47.5



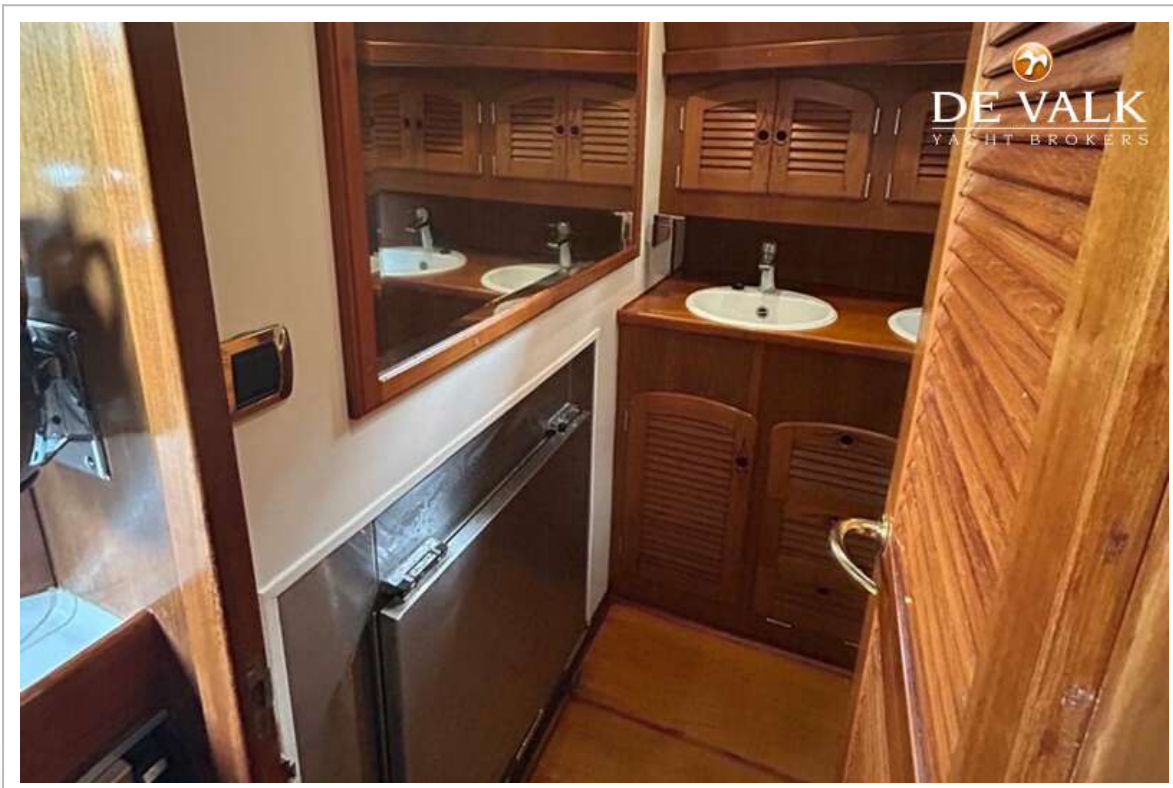
# CONCORD 47.5



# CONCORD 47.5



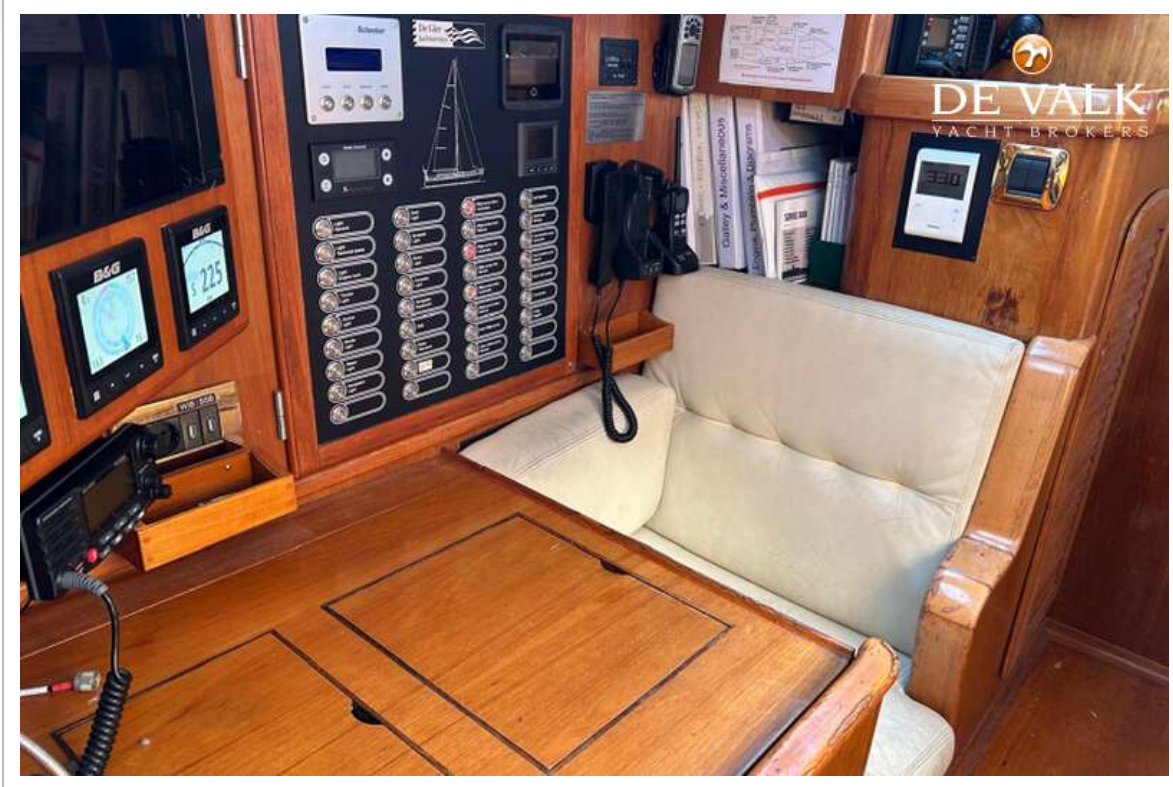
# CONCORD 47.5



# CONCORD 47.5



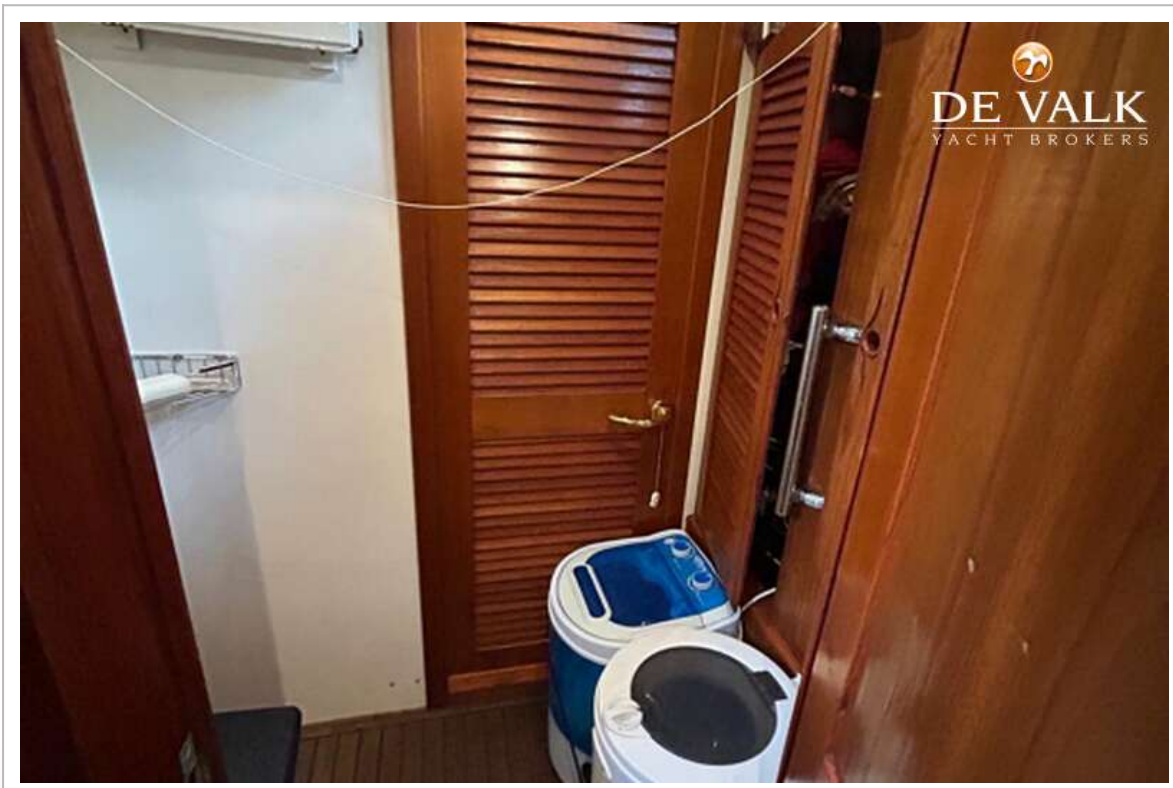
# CONCORD 47.5



# CONCORD 47.5



# CONCORD 47.5



# CONCORD 47.5



# CONCORD 47.5



# CONCORD 47.5



