



LIVE ABOARD MY WITH BERTH IN AMSTERDAM

## KOMMENTARE DES MAKLERS

Live aboard MY "Frisia XV", completely renovated in 2019-2021. Approx. 240m2 living area, Approx. 540m3, Approx. 124 m2 terrasses! The asking price includes her berth, 10 minutes from Amsterdam city centre. Sail away without bridges into the inland waterways. Much attention to insulation, fresh air, central heating and running the whole vessel on a very low energy level. Her layout is easy to convert for other possibilities as: home office, seperate B&B, luxury charter etc. Where do you find a comfortable luxury house and the freedom to sail away directly? Contact us for more information.

*Reinier van der Wolf*

## TECHNISCHE DATEN

<b>Maße</b>	39.60 x 6.60 x 1.40 (m)	<b>Werft</b>	Meyer Werft, Papenburg
<b>Baujahr</b>	2020	<b>Kabinen</b>	7
<b>Material</b>	Stahl	<b>Kojen</b>	13
<b>Motor(en)</b>	2 x DAF 1160 diesel	<b>PS/kW</b>	2 x 168.00 (PS), 123.65 (kW)
<b>Angebotspreis</b>	auf Anfrage (MwSt. )	<b>Liegeplatz</b>	contact Monnickendam

## KONTAKT

<b>Verkaufsbüro</b>	De Valk Monnickendam B.V.	<b>Telefon</b>	+31 (0)299 65 63 50
<b>Adresse</b>	Hoogedijk 6 1145 PM Katwoude NL	<b>E-Mail</b>	monnickendam@devalk.nl

## HAFTUNGS AUSSCHLUSS

Diese Angaben erfolgen nach bestem Wissen, können jedoch nicht garantiert werden.



# LIVE ABOARD MY WITH BERTH IN AMSTERDAM

## ALLGEMEIN

<b>Modell</b>	LIVE ABOARD MY WITH BERTH IN AMSTERDAM
<b>Typ</b>	Motoryacht
<b>Rumpflänge (m)</b>	39,60
<b>Breite (m)</b>	6,60
<b>Tiefgang (m)</b>	1,40
<b>Baujahr</b>	2020
<b>Lancierung</b>	2020, explanation: Completed in 1949 at the Meijer Werft in Papenburg, Germany. Frisia XV is completely renovated in 2019-2021. The renovation is carried out by o.a.: SRF, JSF jachtservice and builders, AP marine propulsion systems, Donker Veenstra, Multiship Harlingen, HJF De Koning stoffering, and many other companies.
<b>Werft</b>	Meyer Werft, Papenburg
<b>Land</b>	Deutschland
<b>Gewicht (t)</b>	145
<b>Ballast (Ton)</b>	Beton
<b>CE Norm</b>	NA
<b>Rumpfmateri al</b>	Stahl
<b>Rumpffarbe</b>	Weiß
<b>Haut-dicke Rumpf (mm)</b>	From 6 mm till 8 mm
<b>Rumpfform</b>	Plattboden
<b>Material Aufbauten</b>	Stahl
<b>Stossliste</b>	Stahl
<b>Deckmaterial</b>	Stahl
<b>Deck Finish</b>	synthetisches Teak
<b>Deck Finish Aufbauten</b>	gemalt
<b>Pflicht Bedeckung</b>	synthetisches Teak
<b>Antifouling (Jahr)</b>	05-2025
<b>Fenster Einfassung</b>	kunststoff   Triple layer insulation windows in Polymer frames
<b>Fenster Material</b>	Triple layer insulation windows
<b>Bullauge</b>	ja
<b>Isolation</b>	Schaum   Approx. 15 cm foam. ** See explanation



# LIVE ABOARD MY WITH BERTH IN AMSTERDAM

<b>Treibstofftank (Liter)</b>	Edelstahl   Approx. 4000 litre
<b>Füllstandsanzeige (Treibstofftank)</b>	Can be viewed in the Yachtcontrol system
<b>Trinkwassertank (Liter)</b>	Kunststoff   Approx. 5400 litre
<b>Füllstandsanzeige (Trinkwasser)</b>	Can be viewed in the Yachtcontrol system
<b>Fäkaelien Tank (Liter)</b>	Kunststoff   Approx. 2700 litre
<b>Füllstandsanzeige (Fäkaelientank)</b>	Can be viewed in the Yachtcontrol system
<b>Fäkaelien Tankablauf</b>	Deck Verbindung + Pumpe
<b>Radsteuerung</b>	hydraulik
<b>Innerhalb Steuerung</b>	ja
<b>Weitere Info Farbe und Anstrich</b>	Completely new painted in 2020 during the renovation.
<b>Weitere Info</b>	** Approx.15 cm foam insulation till the waterline. On a couple of places PIR insulation plates are used for insulation.
<b>Weitere Info</b>	CVO certified, renewed in 09-2025 for a period of 7 years.
<b>Weitere Info</b>	The asking price includes the berth at the Cas Oorthyskade in Amsterdam, size approx. 40 x 6.75m, lease paid till 2065. Entrance house with: mailbox, door with code and some storage. You walk via a concrete potoon to the berth of "Frisia XV". Also a terrace and possibility to moor a small boat in front of the berth. The annual costs are approx. € 1061,-, the costs for the homeowners association is approx. € 132,- per month. The costs for transfer the ownership are for the expense of the buyer. Buying Frisia XV without the berth is also possible, to buy only her berth is not an option.

## UNTERKUNFT

<b>Kabinen</b>	7
<b>Kojen</b>	13
<b>Mannschaftskabine</b>	At this moment there isn't a crew cabin, but there is the possibility to convert the front cabin into a separate cabin for crew, with own entrance.
<b>Innen</b>	Modern interior designed by: Egbert Duijn architect+



# LIVE ABOARD MY WITH BERTH IN AMSTERDAM

<b>Einteilung</b>	From top till bottom: Large wheelhouse, office desks on both sides and seating area with woodstove and flatscreen. Entrance to one of the aftdecks (Approx. 6 x 4m) by a sliding door. Second level: Entrance hall, in front a relax area, large eat-in-kitchen, sliding door to a staircase to the aftdeck (approx. 8 x 5,5m), corridor with office desk, television room with the possibility for a double berth, day toilet, owners cabin in aft ship with French berth, large wardrobe, private bathroom (shower/washbowl/toilet) Lower level" Two bedrooms with double berth and sink, three bedrooms with single berth and sink, wardrobes and washbowl at the corridor, laundry and storage, cabin with French berth/bathroom/office desk.
<b>Fussboden</b>	Holz
<b>Achterdeck</b>	Two large aft decks: Approx 6 x 4m and approx. 8 x 5,50m.
<b>Salon</b>	ja
<b>Heizung</b>	wasserheizung   NIBE heat pump
<b>Heizung 2</b>	wasserheizung   Kabola KB40
<b>Navigation Zenter</b>	ja
<b>Kartentisch</b>	ja
<b>Speisezimmer</b>	ja
<b>Schiebetür zum Achterndeck</b>	ja
<b>Kombüse</b>	ja
<b>Arbeitsfläche</b>	Edelstahl
<b>Spülbecken</b>	Edelstahl   Double stainless steel sink
<b>Herd</b>	Induktion   Siemens Studio Line 4 burner induction cooker
<b>Dunstabsauge</b>	ja
<b>Mikrowelle/Backofen Kombi</b>	1 x Siemens Studio Line Oven/steam oven, 1 x Siemens oven/microwhave
<b>Kuhlschrank</b>	2 x 320 litre Siemens fridge
<b>Gefrier Truhe</b>	1 x 320 litre Siemens freezer
<b>Warmwasser System</b>	uber Heizung
<b>Wasserdruck System</b>	elektrisch
<b>Geschirrspulmaschine</b>	Siemens
<b>Eignerkabine</b>	Französisch Bett   In the stern
<b>Kleiderschrank</b>	Regale und hängend   Large built-in wardrobe



# LIVE ABOARD MY WITH BERTH IN AMSTERDAM

Badezimmer	en suite
Handwaschbecken	Double wash basin
Dusche	ja
Gästekabine 1	Französisch Bett   In the front, with office desk, possibility for own entrance
Badezimmer	en suite
Toilette	ja
Toilette System	elektrisch
Handwaschbecken	ja
Dusche	ja
Gästekabine 2	Doppelbett
Kleiderschrank	At the corridor
Handwaschbecken	ja
Gästekabine 3	Doppelbett
Kleiderschrank	At the corridor
Handwaschbecken	ja
Gästekabine 4	Einzelbett
Gästekabine 5	Einzelbett
Kleiderschrank	At corridor
Gästekabine 6	Einzelbett
Handwaschbecken	ja
Waschmaschine	Placed in the laundry   Bosch serie 6
Trockner	Placed in the laundry   Bosch serie 4
Weitere Info	Approx. 240m <sup>2</sup> living area, Approx. 540m <sup>3</sup> , Approx. 124 m <sup>2</sup> terrasses! These dimensions were not measured via the nen 2580 measurement method, no rights can be derived from this.

## MASCHINEN

Motoranzahl	2
Marke	DAF
Typ	1160
PS	168



# LIVE ABOARD MY WITH BERTH IN AMSTERDAM

<b>kW</b>	123.65
<b>Kraftstoffart</b>	Diesel
<b>Überholung im Jahr</b>	2019, a complete rebuilt of both DAF engines and the ZF gearboxes
<b>Kühlungssystem Motor</b>	indirekte Wärmetauscher
<b>Antrieb</b>	Schraubenwelle
<b>Motor bedienung</b>	elektrisch   Morse
<b>Gewende getriebe</b>	Two ZF BW 35 E45 gearboxes
<b>Bugschraube</b>	elektrisch   380V bowthruster
<b>Wellen Drucklager</b>	ja
<b>Propeller Typ</b>	fest
<b>Propellerblätter</b>	4 bladed propellers
<b>Material Propellerwelle</b>	Stahl
<b>Propellerwelle schmierung</b>	Fett   Automatic grease machine for the propellershafts and steering.
<b>Elektrische Bilgenpumpe</b>	ja
<b>Generator</b>	Partner LSA 44.1, 100kVa, 400V generator, Iveco diesel engine
<b>Starterbatterie</b>	2 x 50ah Optima Red Top batteries for both engines (total: 4)
<b>Versorgungsbatterie</b>	Battery package of 12 x 2V cells with a total capacity of 1010Ah.
<b>Generatorbatterie</b>	1x 50ah Optima Red Top
<b>Batterie Monitor</b>	Can be read in the Yachtcontrol sytems and several screens throughout the ship.
<b>Batterie Ladegerat</b>	2 x Mastervolt Chargemaster plus 24/40-3
<b>Umwandler</b>	3 x Mastervolt Mass Sine Ultra 24/4000
<b>Solar panele</b>	On the upper roof are 20 solar panels 340-380WP each, 2 x Mastervolt MPPT Solar chargemaster 60.
<b>Landstrom</b>	mit Kabel
<b>Trenn transformator</b>	Weseman transformer, 44 kVa
<b>Wasserbereiter</b>	There is no watermaker installed but the systems on board are already prepared and the connections are there.
<b>Weitere Info</b>	ORCON WTU 800 heat recovery system
<b>Weitere Info</b>	AERIS air ventilation and filter sytem throughout the whole ship



## NAVIGATION

Tiefenanziege	Via the Yachtcontrol system
Logge	Via the Yachtcontrol system
Windlupe anzeige	Via the Yachtcontrol system
UKW	Simrad HS90
Portabel UKW	Cobra handheld VHF
Autopilot	Simrad AP70 MK 2 autopilot
Ruderwinkel Anzeige	Via the Yachtcontrol system
Radar	There is currently no radar installed. The cables have been laid already and it is possible to add a Radar on the Yachtcontrol system.
Radar/GPS/Plotter	2 digital screens in the wheelhouse who operate the Yachtcontrol system for navigation and functions on board.
AIS Transponder	Em-Trak A100
Kamera	There are several camera's installed to view the bow/stern/ps/sb/engine room
Navigation Beleuchtung	ja

## AUSRÜSTUNG

Badeleiter	Edelstahl
Heck-Tur	ja
Gangway	Manual aluminum gangway
Heckdusche	ja
Anker	Two bow achors
Ankerkette	Approx. 50 meter galvanized chain
Anker 2	Two sput poles to anchor till a depth of approx 4 meter
Ankerwinde	elektrisch
Deckwasche	ja
Deck Kran	hydraulik   2000KG
See Reling	Edelstahl
Seiten-Einstieg Seereling	2 x bow, 2 x stern
Scheibenwischer	3 x pantograph wipers



# LIVE ABOARD MY WITH BERTH IN AMSTERDAM

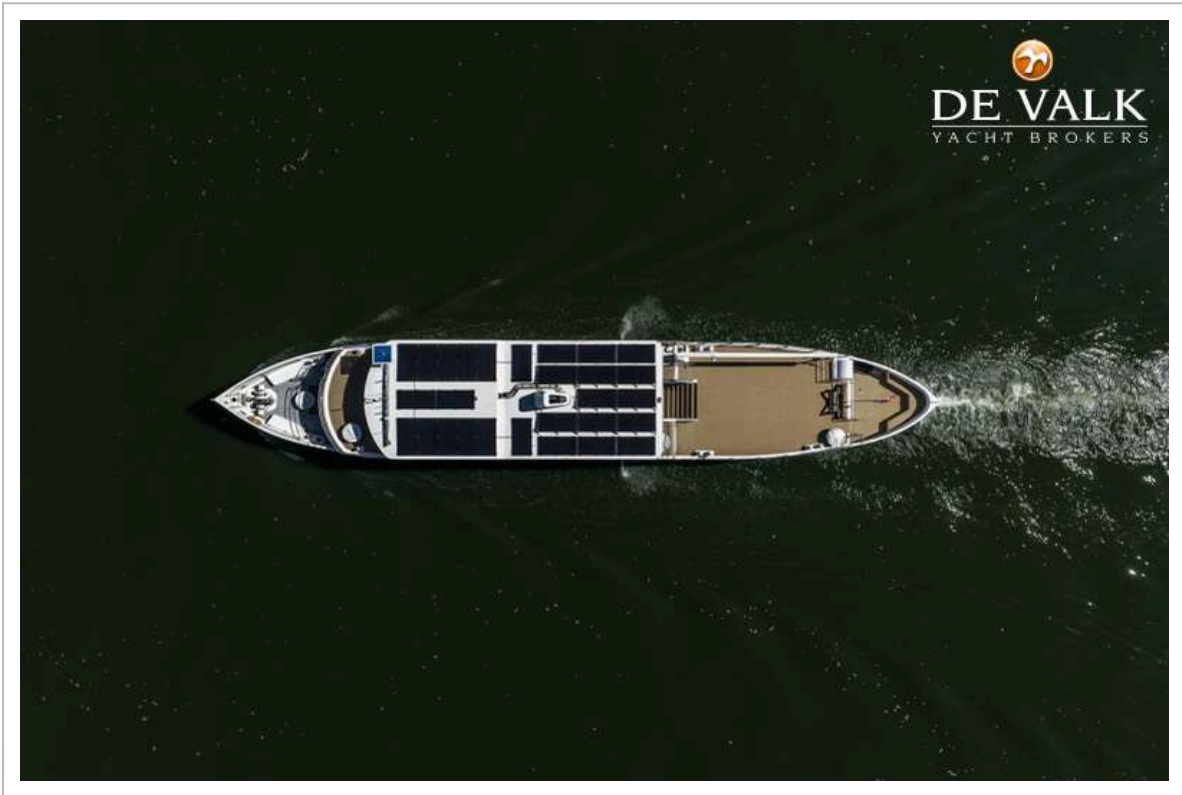
Horn	ja
Fenderkissen	ja
Festmacher	ja
TV	In the television room
Surround Sound System	In the television room
Feuerloscher	ja
Feuerloscher in Maschine Raum	FirePro



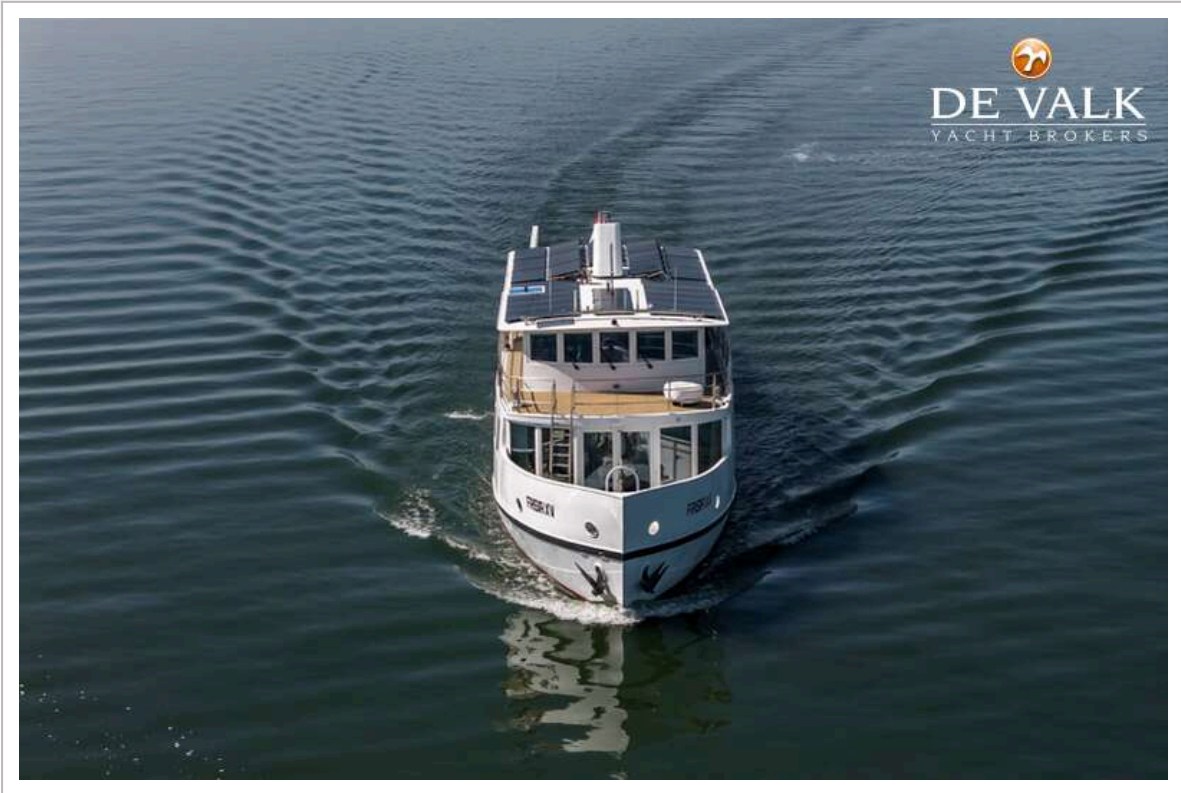
LIVE ABOARD MY WITH BERTH IN AMSTERDAM



LIVE ABOARD MY WITH BERTH IN AMSTERDAM



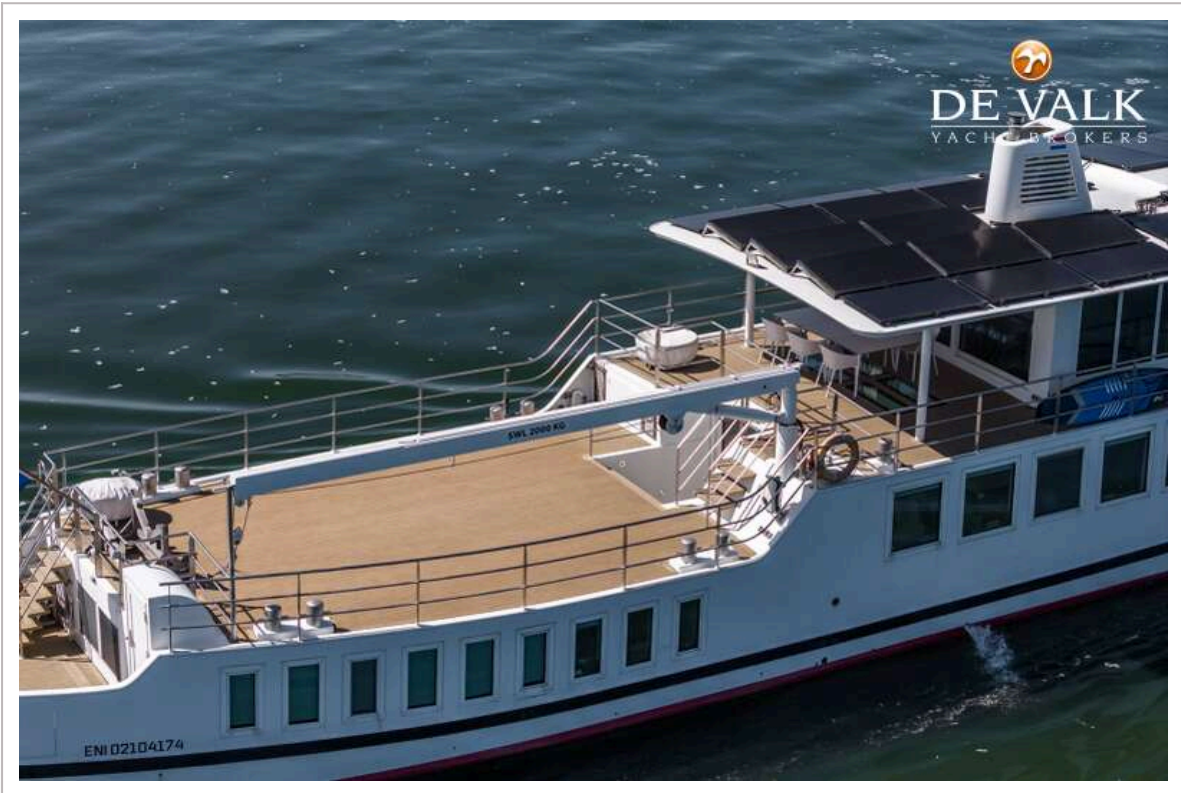
LIVE ABOARD MY WITH BERTH IN AMSTERDAM



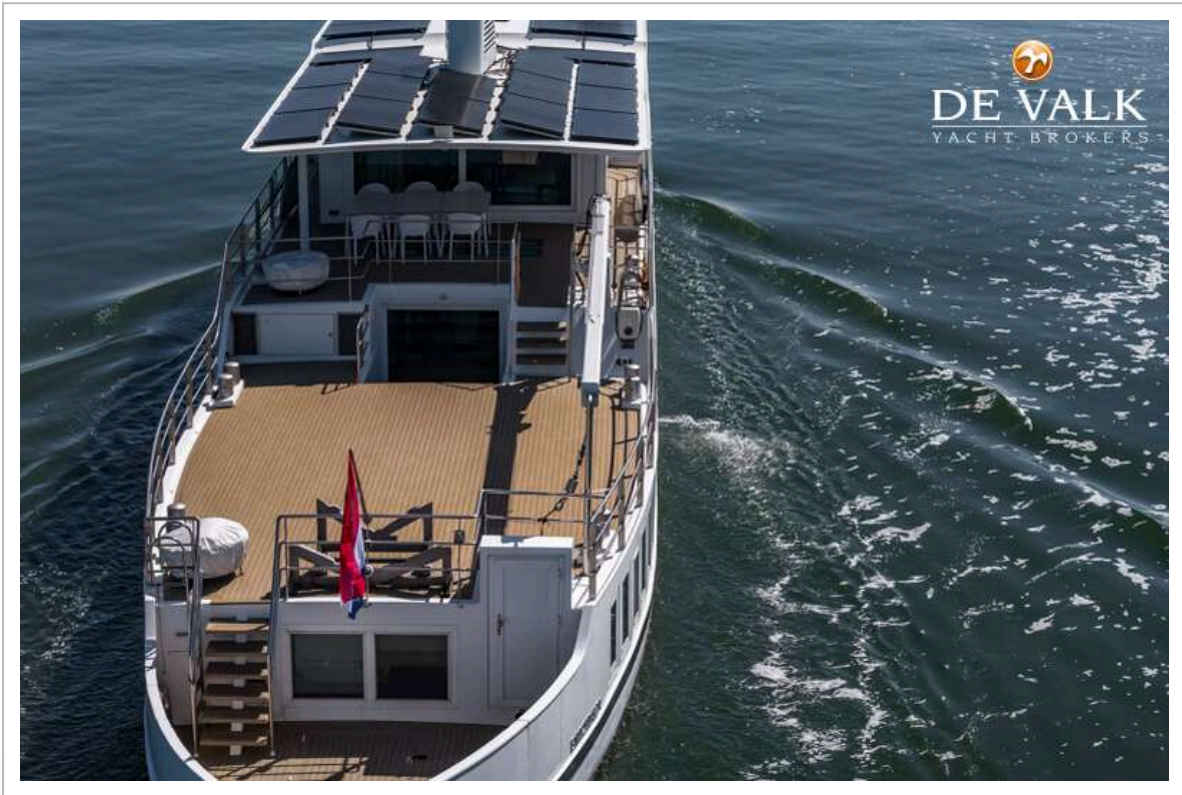
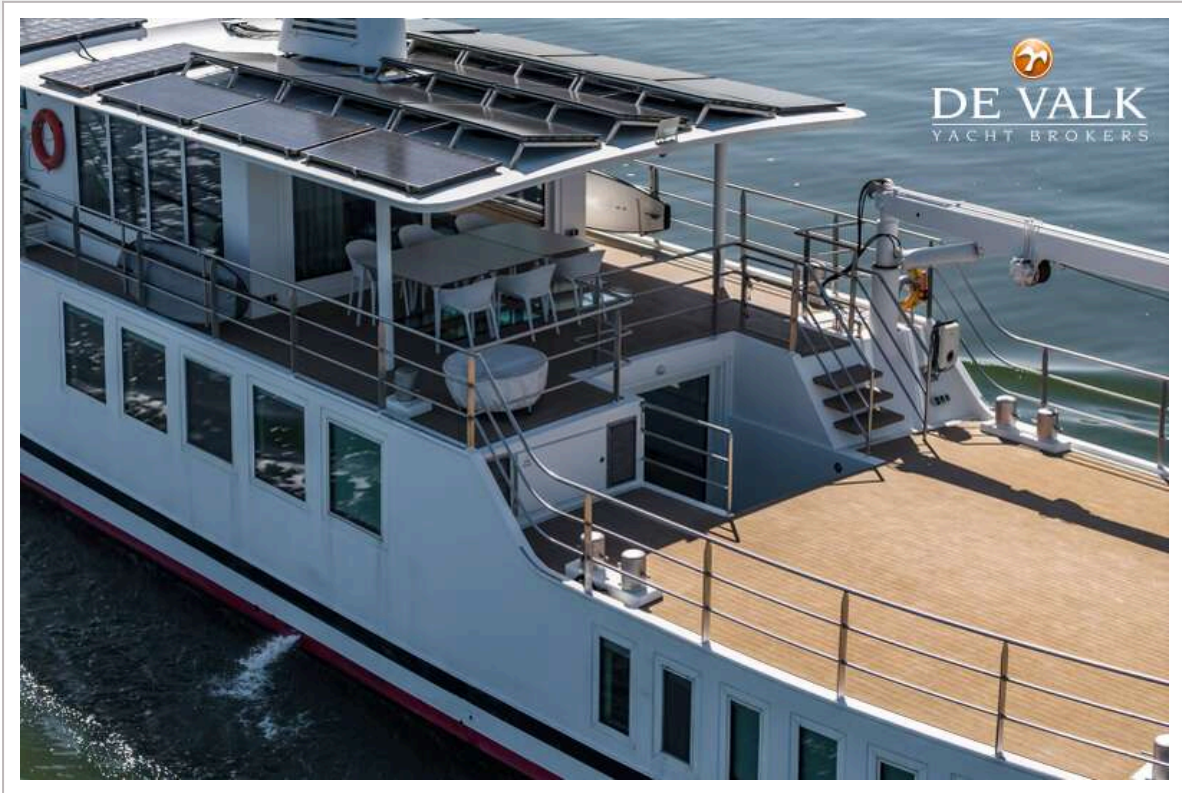
LIVE ABOARD MY WITH BERTH IN AMSTERDAM



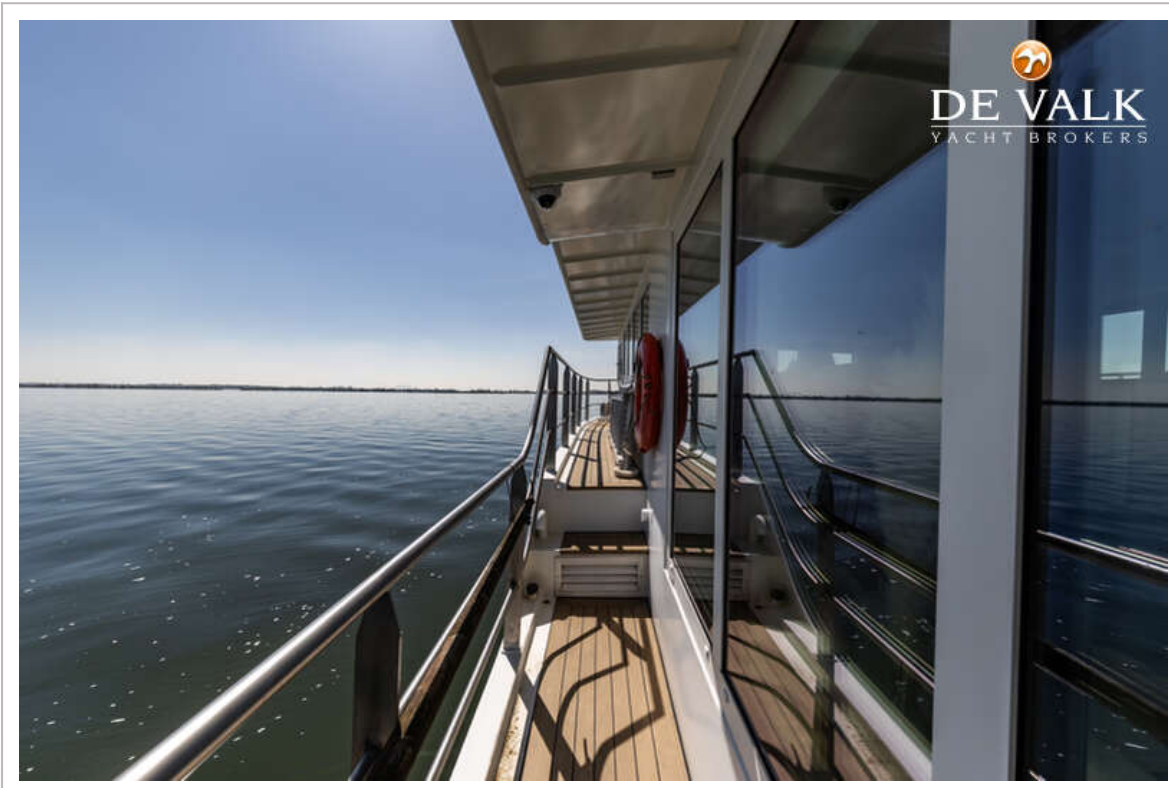
LIVE ABOARD MY WITH BERTH IN AMSTERDAM



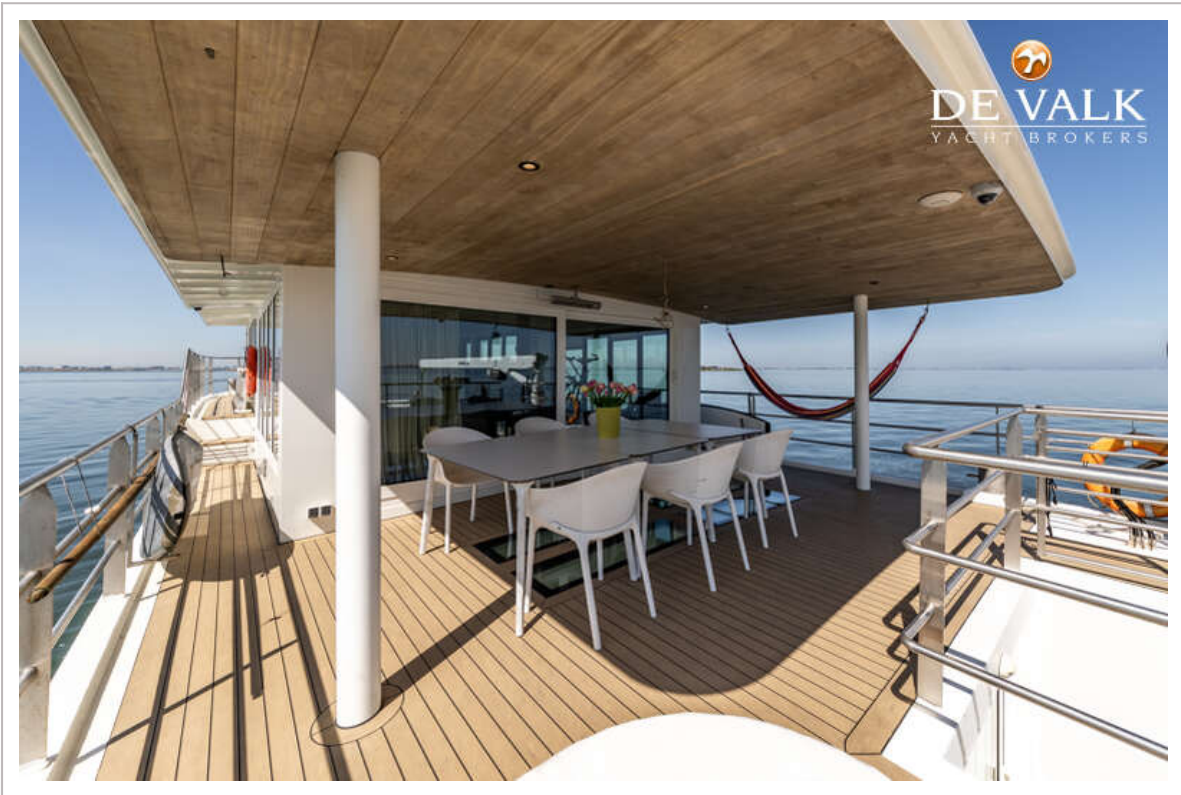
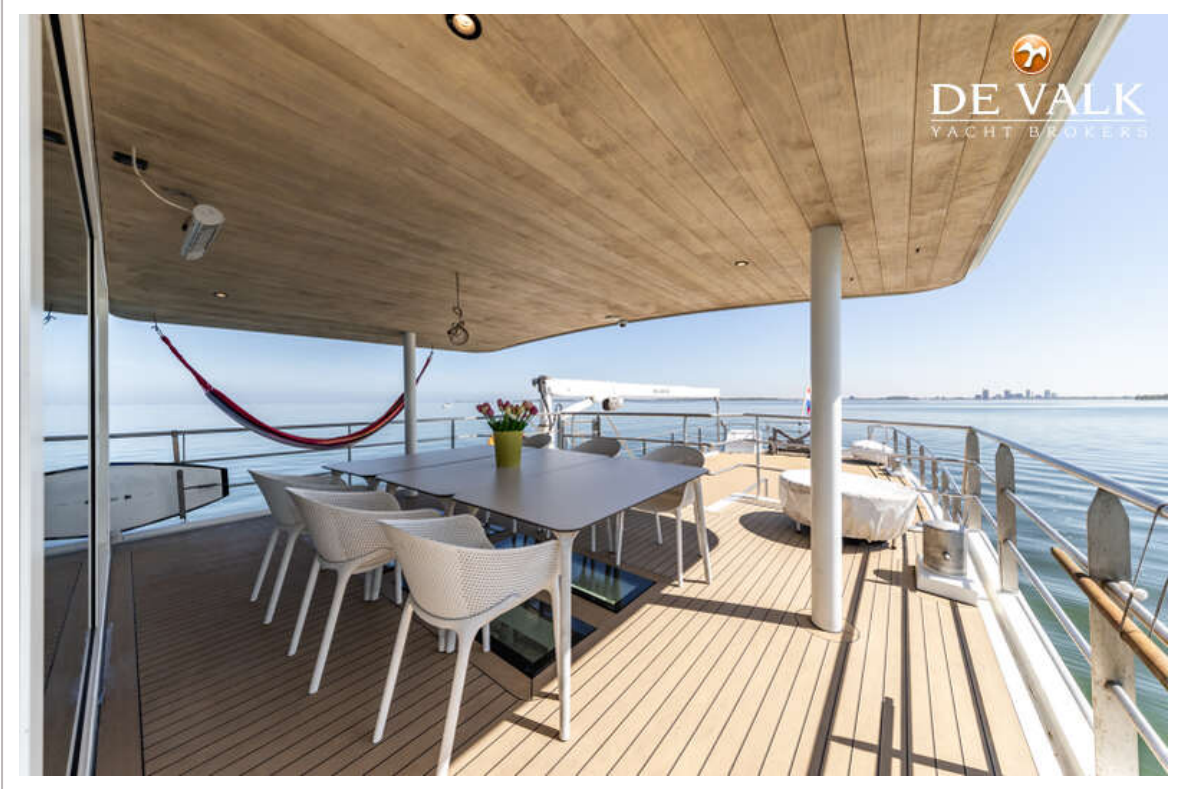
LIVE ABOARD MY WITH BERTH IN AMSTERDAM



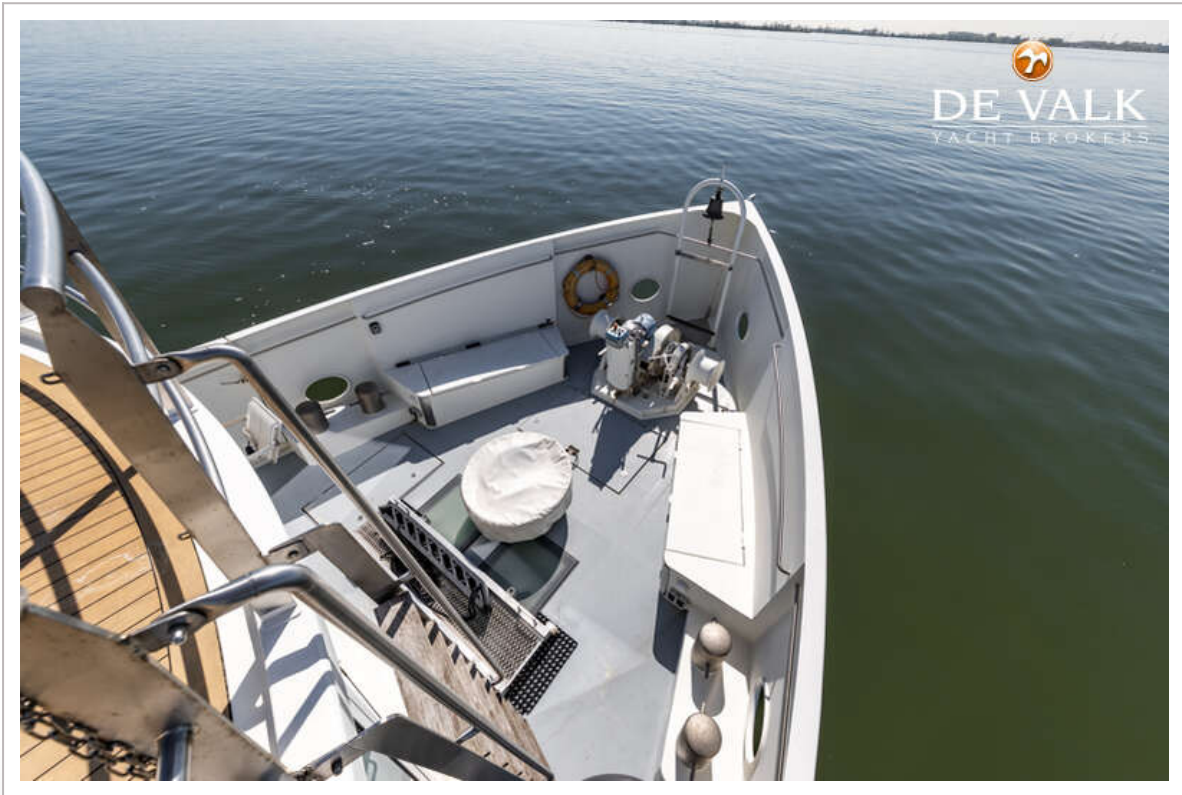
LIVE ABOARD MY WITH BERTH IN AMSTERDAM



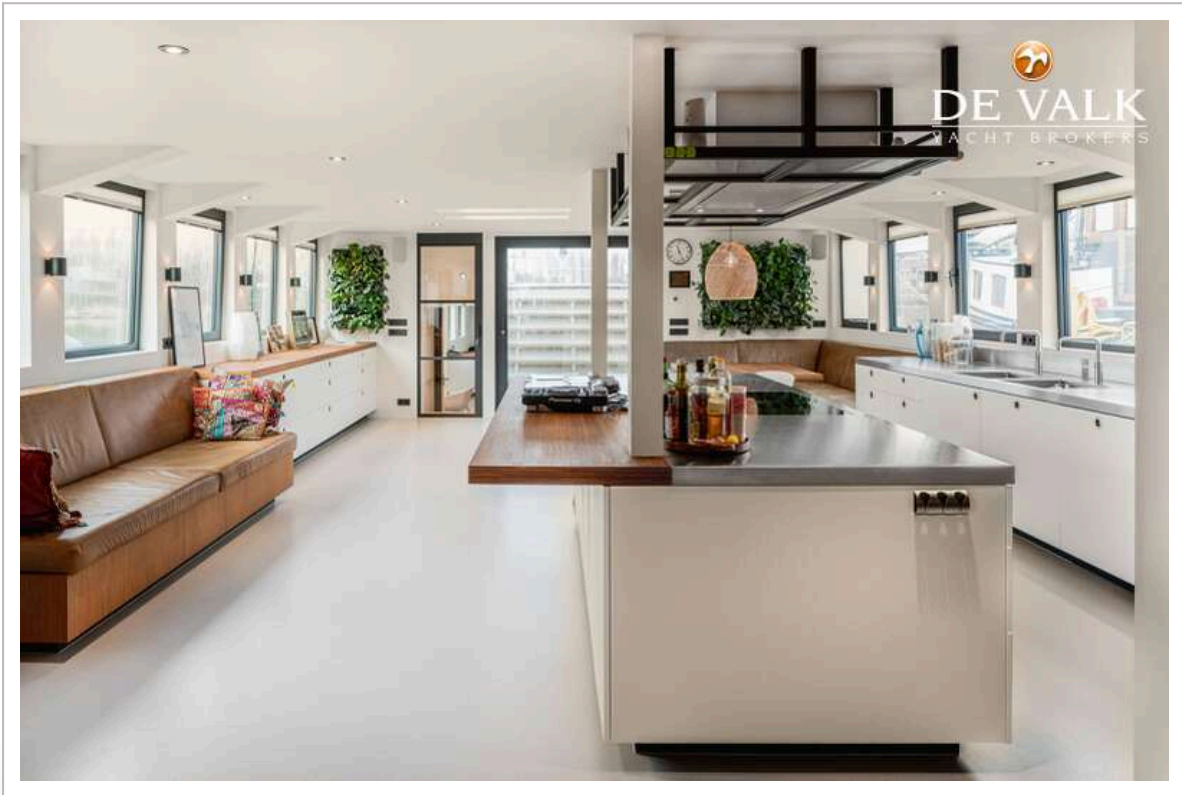
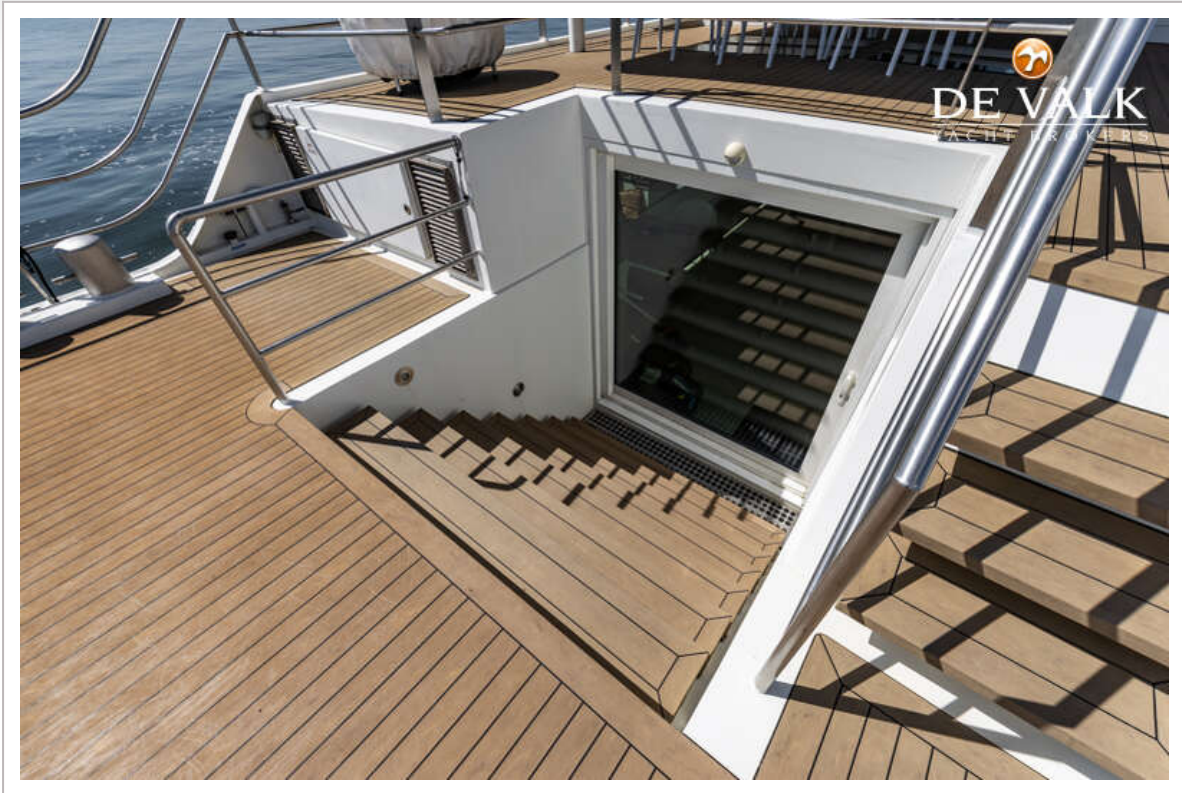
LIVE ABOARD MY WITH BERTH IN AMSTERDAM



LIVE ABOARD MY WITH BERTH IN AMSTERDAM



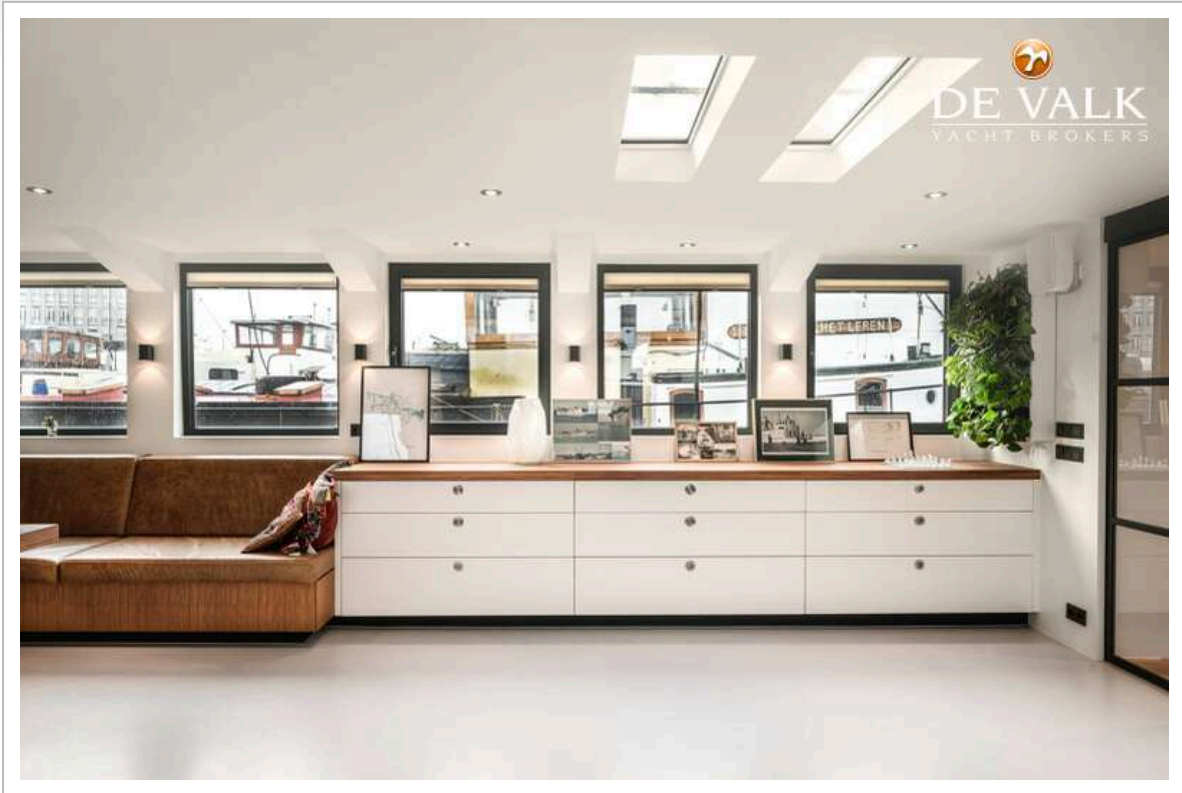
LIVE ABOARD MY WITH BERTH IN AMSTERDAM



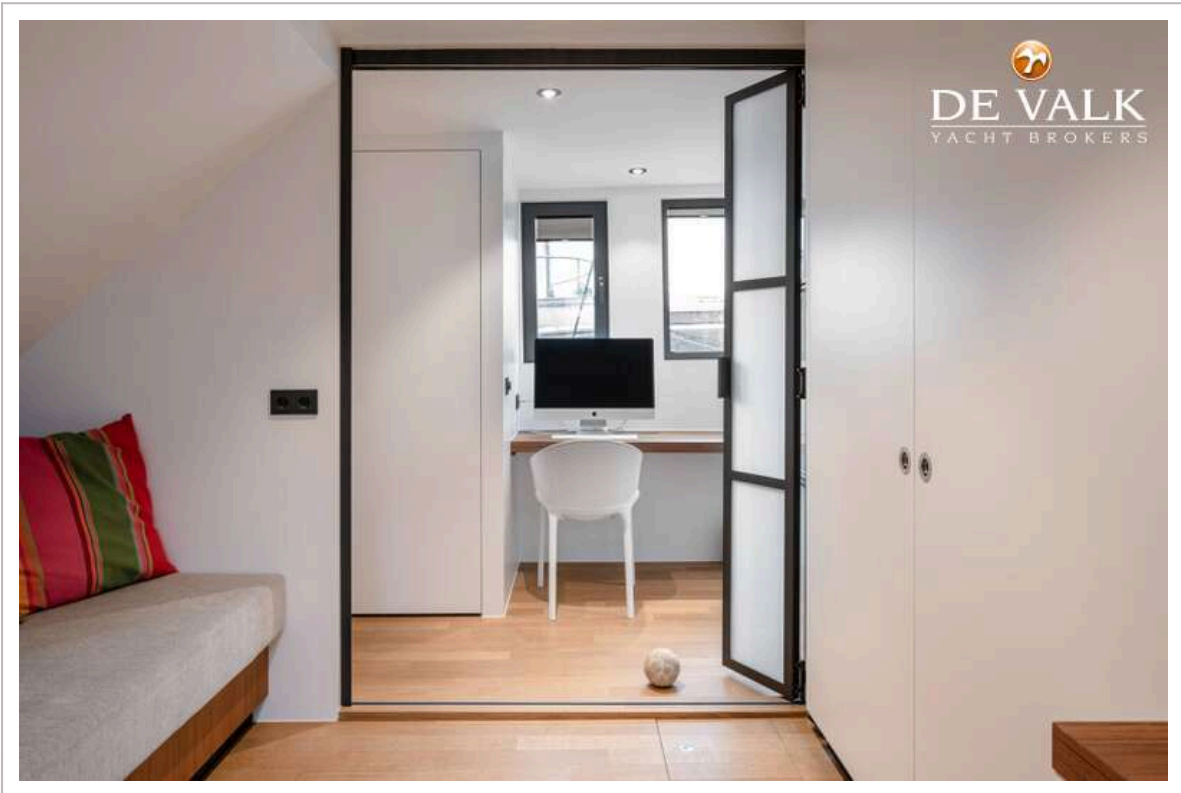
LIVE ABOARD MY WITH BERTH IN AMSTERDAM



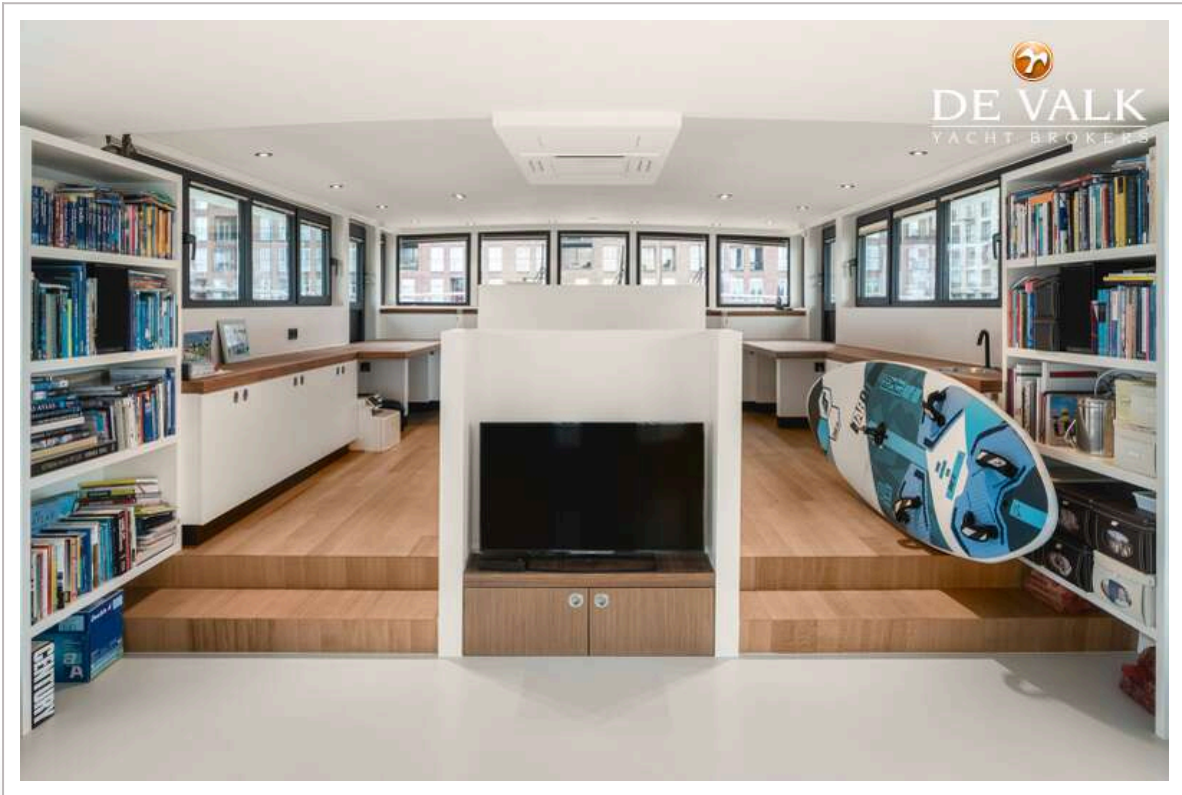
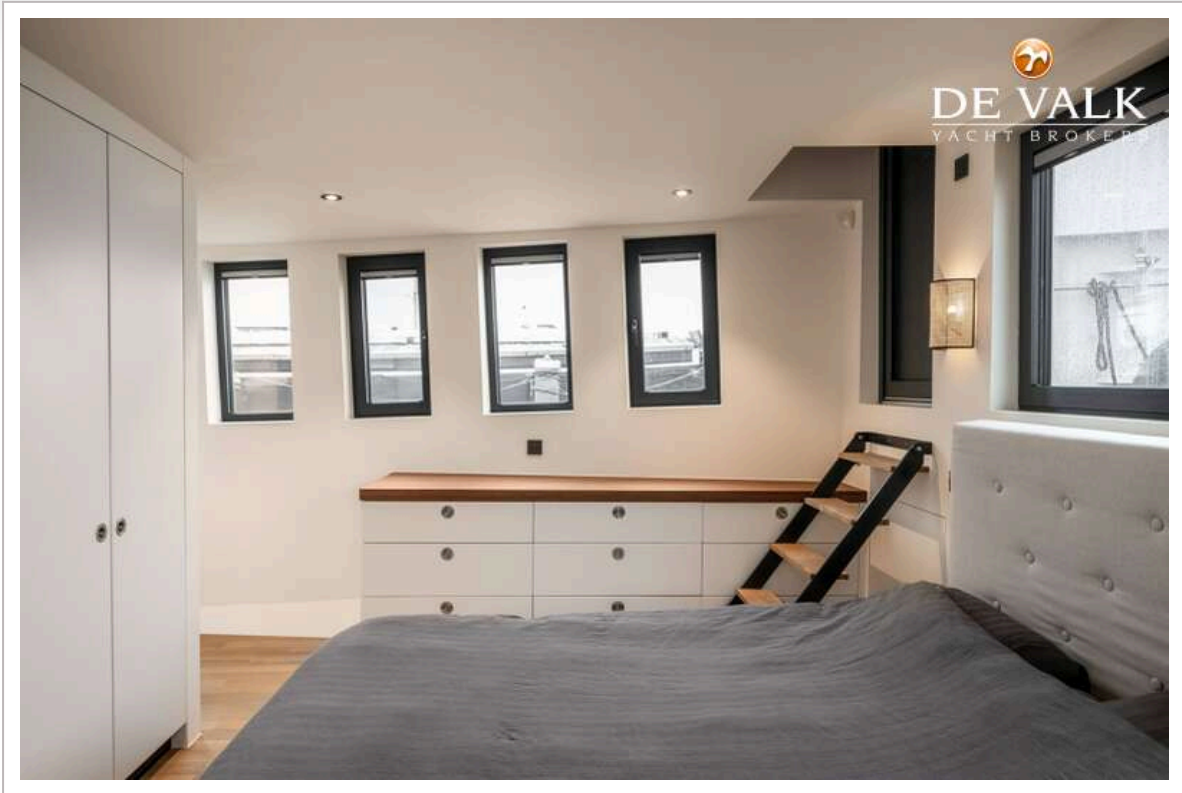
LIVE ABOARD MY WITH BERTH IN AMSTERDAM



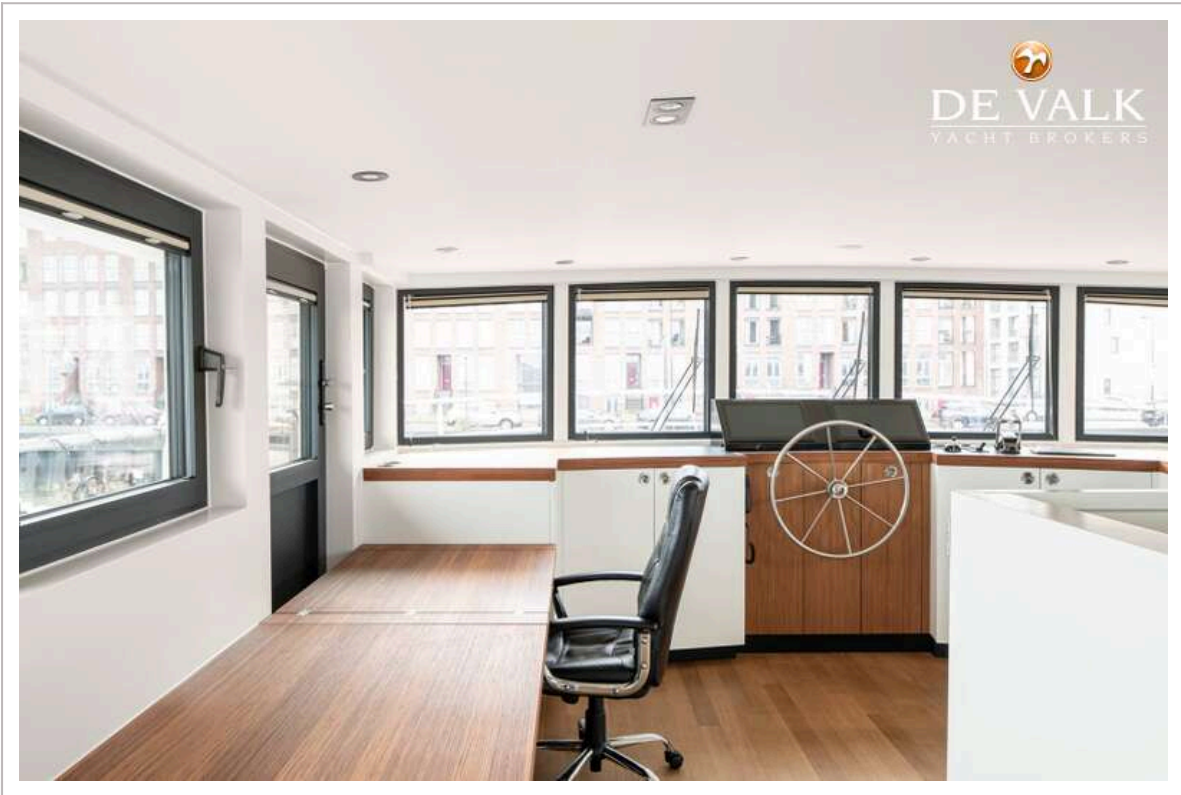
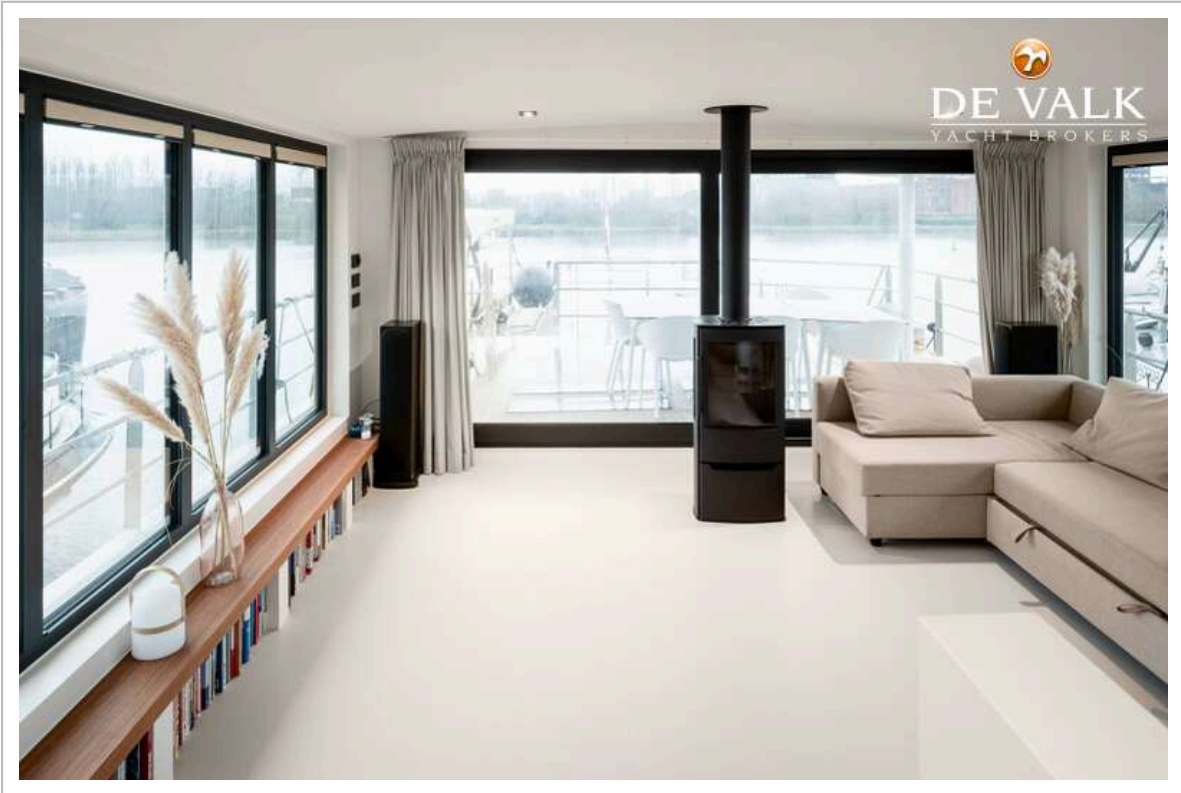
LIVE ABOARD MY WITH BERTH IN AMSTERDAM



LIVE ABOARD MY WITH BERTH IN AMSTERDAM



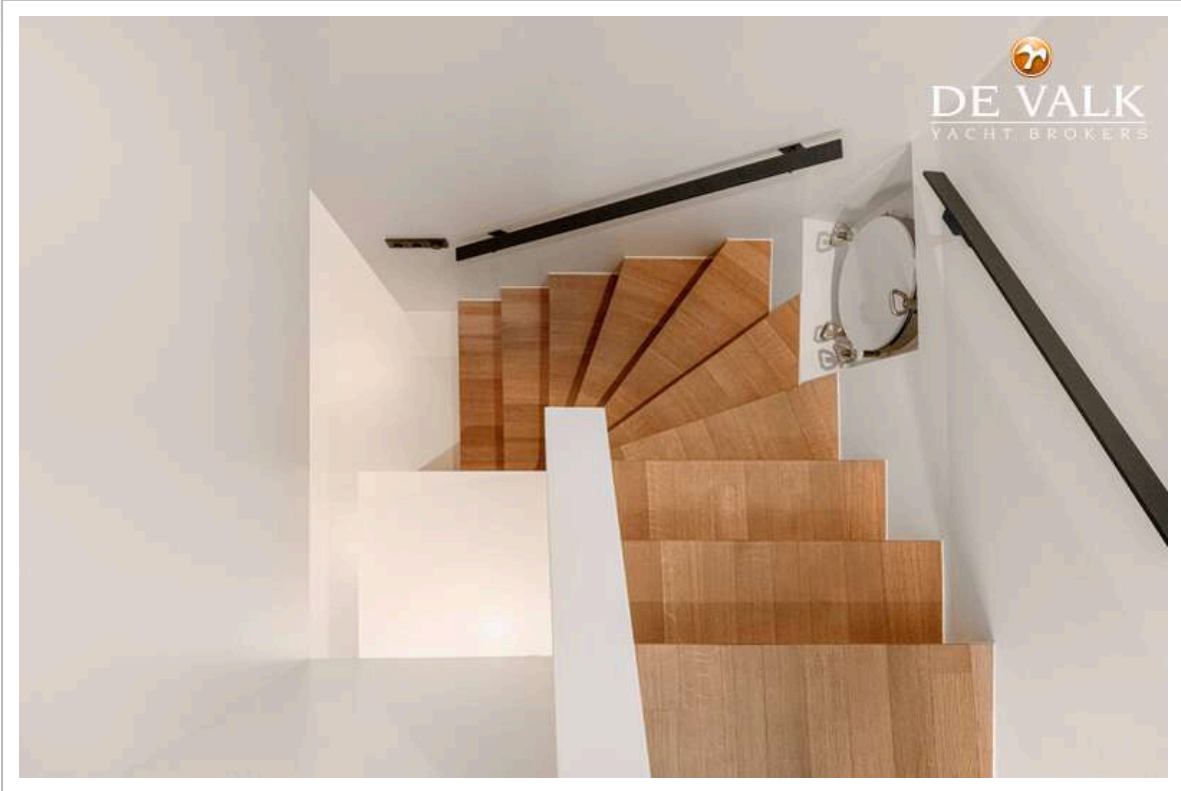
LIVE ABOARD MY WITH BERTH IN AMSTERDAM



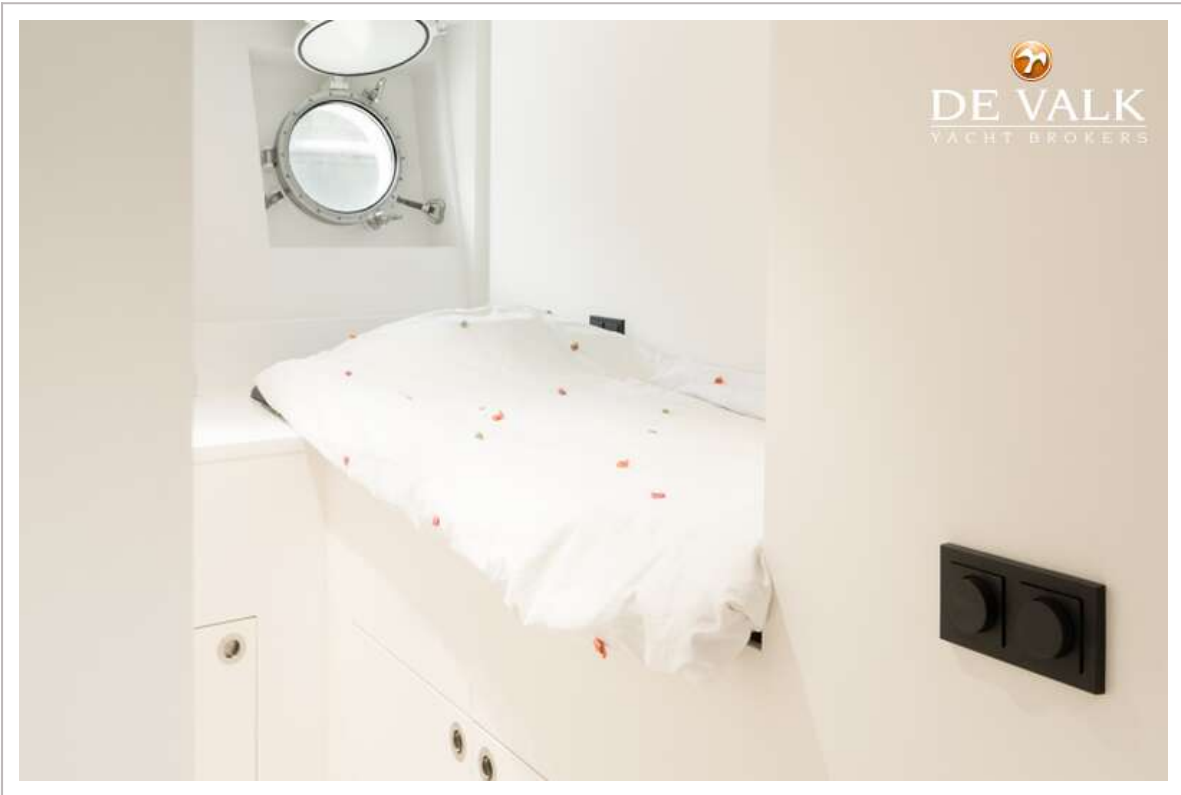
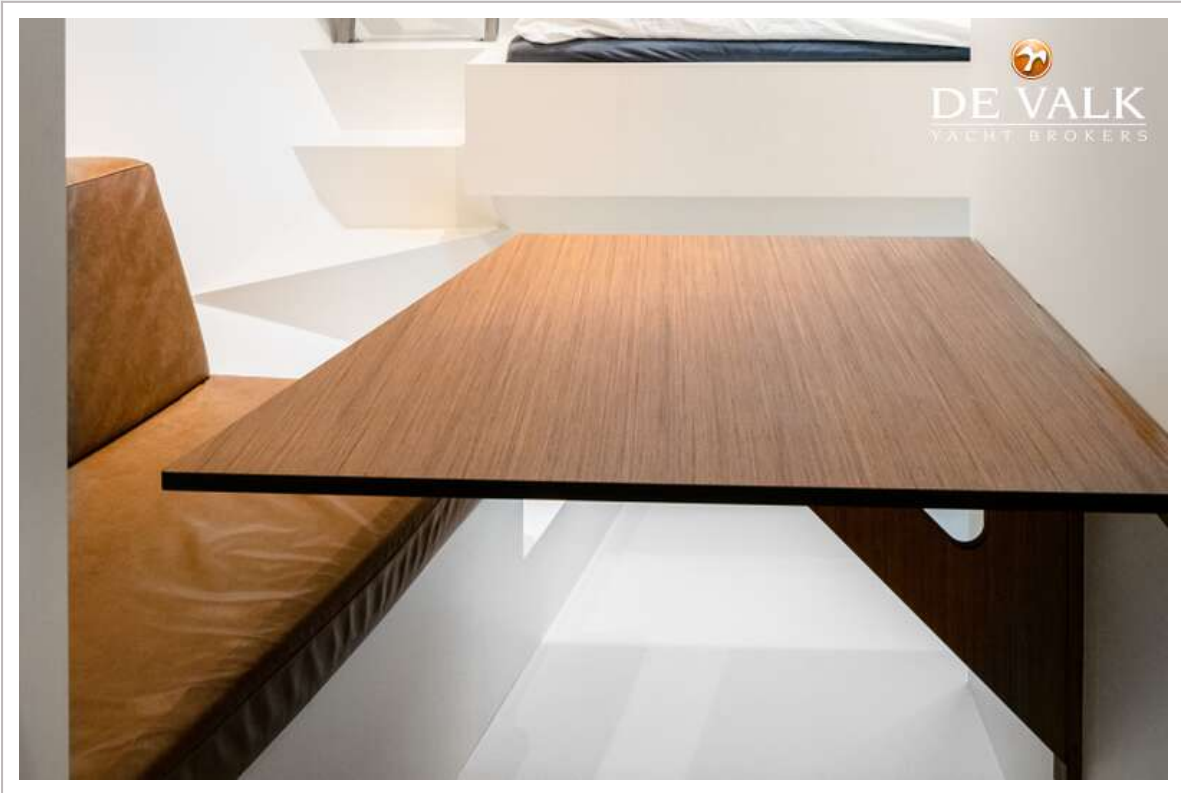
LIVE ABOARD MY WITH BERTH IN AMSTERDAM



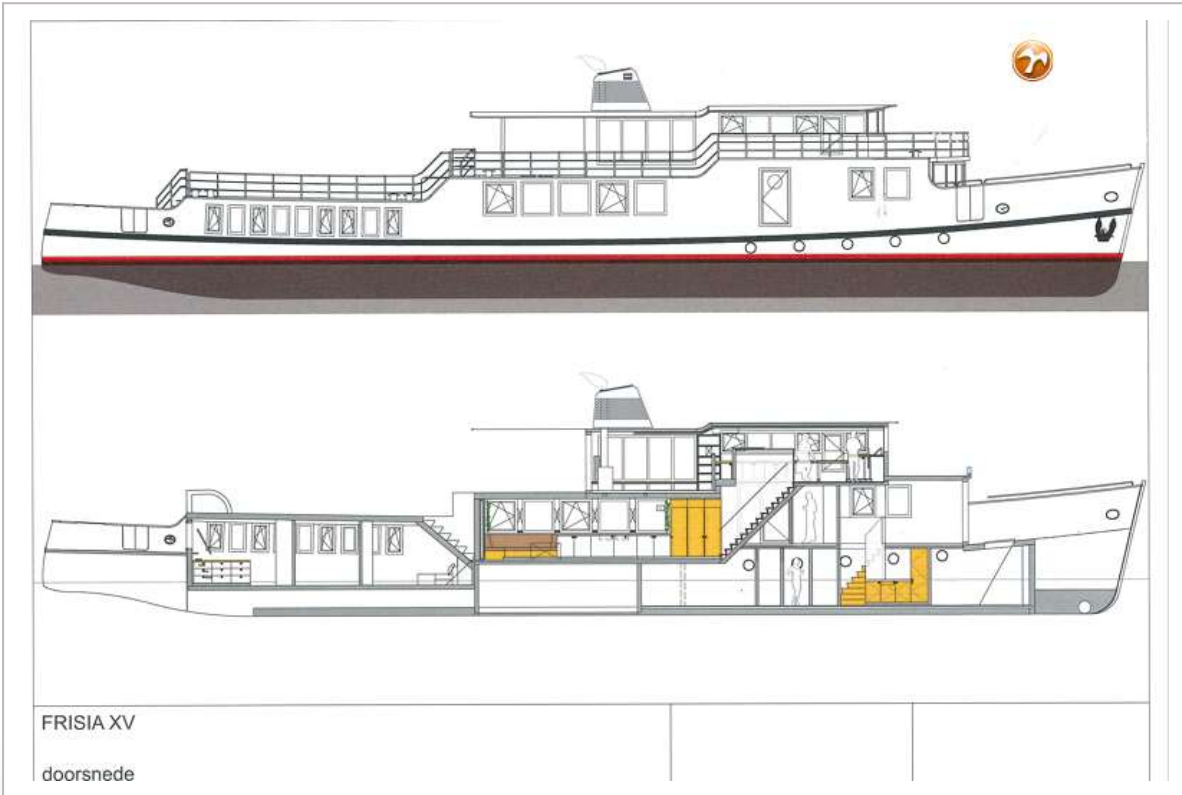
LIVE ABOARD MY WITH BERTH IN AMSTERDAM



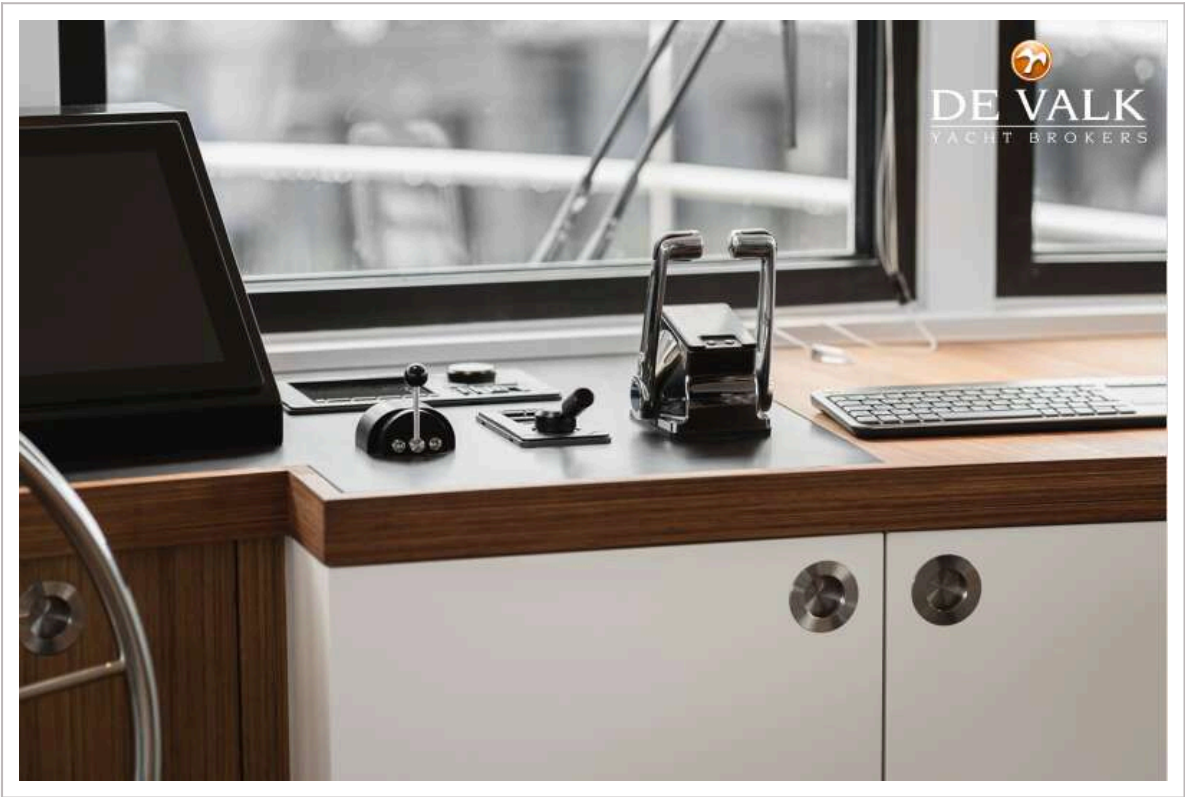
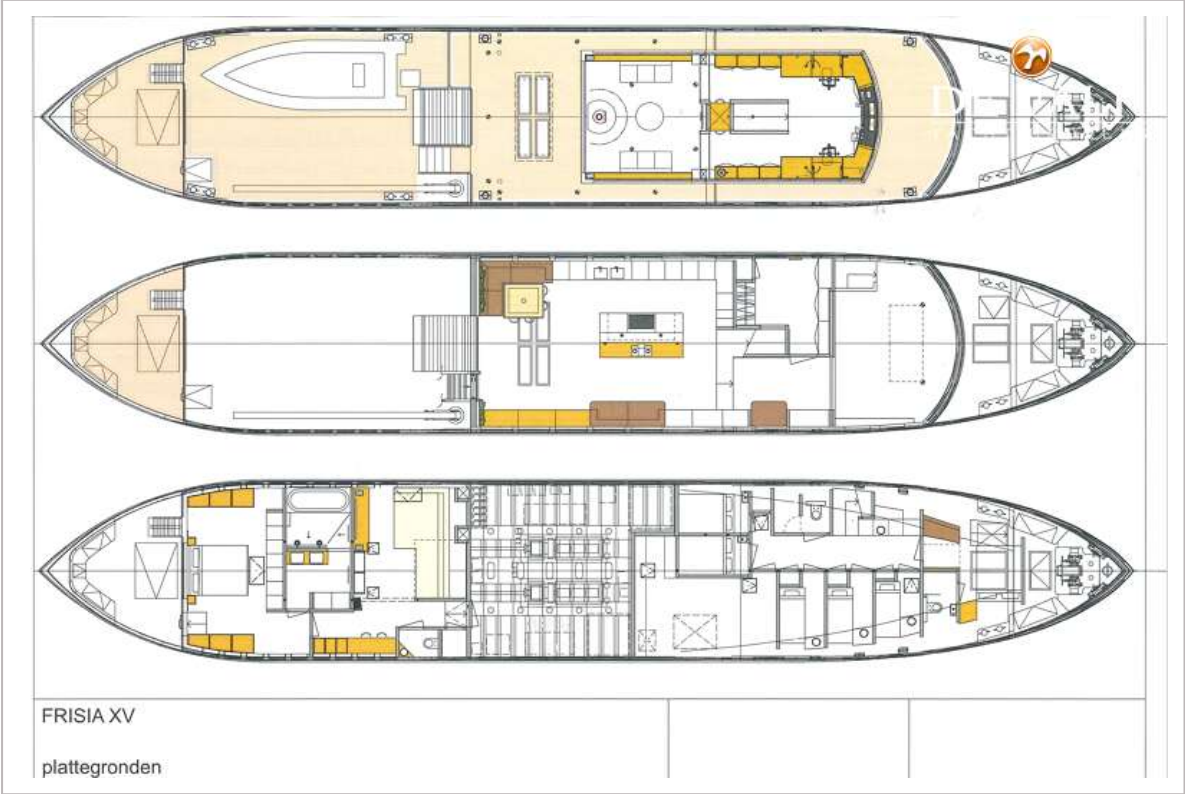
LIVE ABOARD MY WITH BERTH IN AMSTERDAM



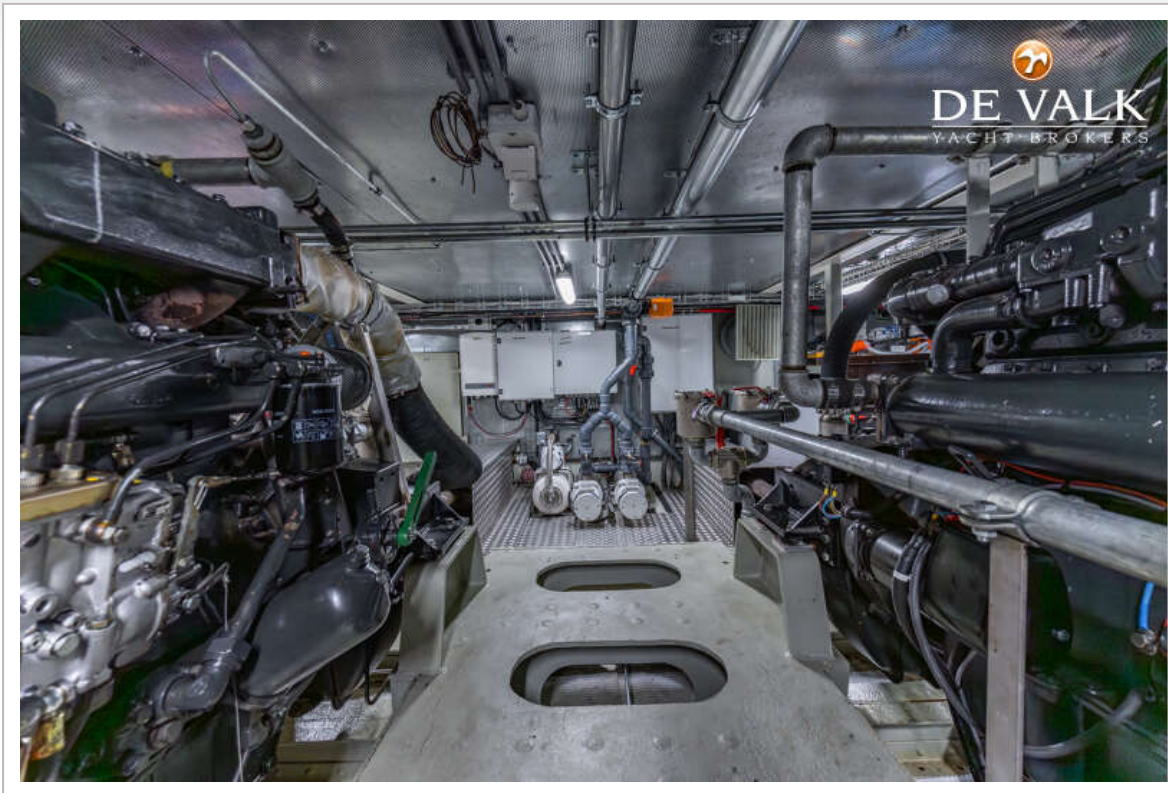
# LIVE ABOARD MY WITH BERTH IN AMSTERDAM



# LIVE ABOARD MY WITH BERTH IN AMSTERDAM



LIVE ABOARD MY WITH BERTH IN AMSTERDAM



LIVE ABOARD MY WITH BERTH IN AMSTERDAM

