



DE VALK
YACHT BROKERS



CONTEST 35S



DE VALK
YACHT BROKERS

KOMMENTARE DES MAKLERS

The Contest 35 Sy AJA is a proven offshore cruiser from renowned Dutch builder Conyplex, with timeless lines and a solid reputation. Well equipped for extended cruising, she features a reliable Volvo Penta engine (2016), upgraded rigging, windvane steering, solar and wind power, and a comprehensive Raymarine setup. Lovingly maintained and in the same ownership since 2009, she offers safety, comfort, and self-sufficiency for serious sailors. VAT paid and ready to sail. A capable yacht with a strong pedigree.

Sofia Iliia-Salvanou

TECHNISCHE DATEN

Maße	10.90 x 3.52 x 1.90 (m)	Werft	Conyplex b.v.
Baujahr	1989	Kabinen	2
Material	GFK	Kojen	6
Motor(en)	1 x VOLVO PENTA D2-40 diesel	PS/kW	40.00 (PS), 29.44 (kW)
Angebotspreis	€ 58.000 (MwSt. Bezahlt)	Liegeplatz	beim Verkaufsbüro

KONTAKT

Verkaufsbüro	De Valk Corfu	Telefon	(+30) 6948681503
Adresse	New Port of Corfu, near Gouvia Marina 490 83 Corfu GR	E-Mail	corfu@devalk.nl

HAFTUNGS AUSSCHLUSS

Diese Angaben erfolgen nach bestem Wissen, können jedoch nicht garantiert werden.



ALLGEMEIN

Modell	CONTEST 35S
Typ	Segelyacht
Rumpflänge (m)	10,90
Wasserlinienlänge (m)	9,30
Breite (m)	3,52
Tiefgang (m)	1,90
Stehhöhe (m)	1,90
Baujahr	1989
Lancierung	1989
Werft	Conyplex b.v.
Land	Niederlande
Entwerfer	Dick Zaal
Gewicht (t)	8,42
Brutto tonnage	8
Netto tonnage	2
Rumpfmateriale	GFK
Rumpffarbe	Weiß
Treibstofftank (Liter)	120 liters, monitored + 3x 20-liter jerrycans
Trinkwassertank (Liter)	Edelstahl (2x120 liters), with float and monitor
Fäkaelien Tank (Liter)	30
Radsteuerung	With cover
Not-Pinne	Stainless steel

UNTERKUNFT

Kabinen	2
Kojen	6
Salon	Upholstery of salon benches (dark blue) replaced Dec. 2014
Heizung	Webasto heater Airtop Evo 3900
Kartentisch	ja
Achterkabine	ja



Speisezimmer	ja
Dinette	ja
Dinette zum umbauen	ja
Kombüse	ja
Arbeitsfläche	ja
Spülbecken	ja
Herd	ja
Ofen	ENO 2-burner gas stove Grand Large (2020)
Kuhlschrank	ja
Warmwasser System	Quick boiler (20 liters) 1200W + switch
Schnellkoch Kanne	ja
Eignerkabine	Doppelbett
Kleiderschrank	ja
Badezimmer	getrennt
Toilet	getrennt
Toilette System	handbetrieb Jabsco
Handwaschbecken	im Badezimmer
Dusche	ja
Gästekabine 1	Doppelbett With extra wash basin
Kleiderschrank	ja

MASCHINEN

Motoranzahl	1
Marke	VOLVO PENTA
Typ	D2-40
PS	40
kW	29.44
Kraftstoffart	Diesel
Installiert im Jahr	2016
Antrieb	Schraubenwelle
Propellerblätter	3



Material Propellerwelle	Edelstahl Replaced March 2024
Hand Bilgenpumpe	ja
Elektrische Bilgenpumpe	ja
Batterien	ja
Starterbatterie	75Ah 2022
Versorgungsbatterie	3x120Ah New Sept. 2025 (not Lithium but standard)
Batterie Monitor	Victron BMV-600s 2013
Batterie Ladegerat/Umwandler	Victron EasyPlus 12/1600/70 replaced 2019
Wind generator	Superwind 350 + Shutoff switch
Solar panele	Victron: 1x130W + 2x110W
Dioden-Batterie-Koppler	Victron Cyrix 2013
Trenn transformator	Victron 2000
Wasserbereiter	Katadyn, Power Survivor 40E (Bought but not connected)

NAVIGATION

Tiefenanziege	Raymarine
Windlupe anzeige	Raymarine
UKW	Icom IC-M 323G (incl.GPS)
Portabel UKW	Icom M91D
Autopilot	Raymarine SPX5 (2010) needs inspection
Windfahne Steuerung	(2016), barely used
Plotter	Raymarine chartplotter c95 (2016)
AIS Transponder	Raymarine
Radio Empfänger	Icom IC-7200 SSB + ground plate
Navigation Beleuchtung	ja
Weitere Info	Below-deck autopilot Jefa drive unit Type 1, Raymarine EV200

AUSRÜSTUNG

Spritzverdek	2017
Bimini	2017 + removable side panels
Badeleiter	ja



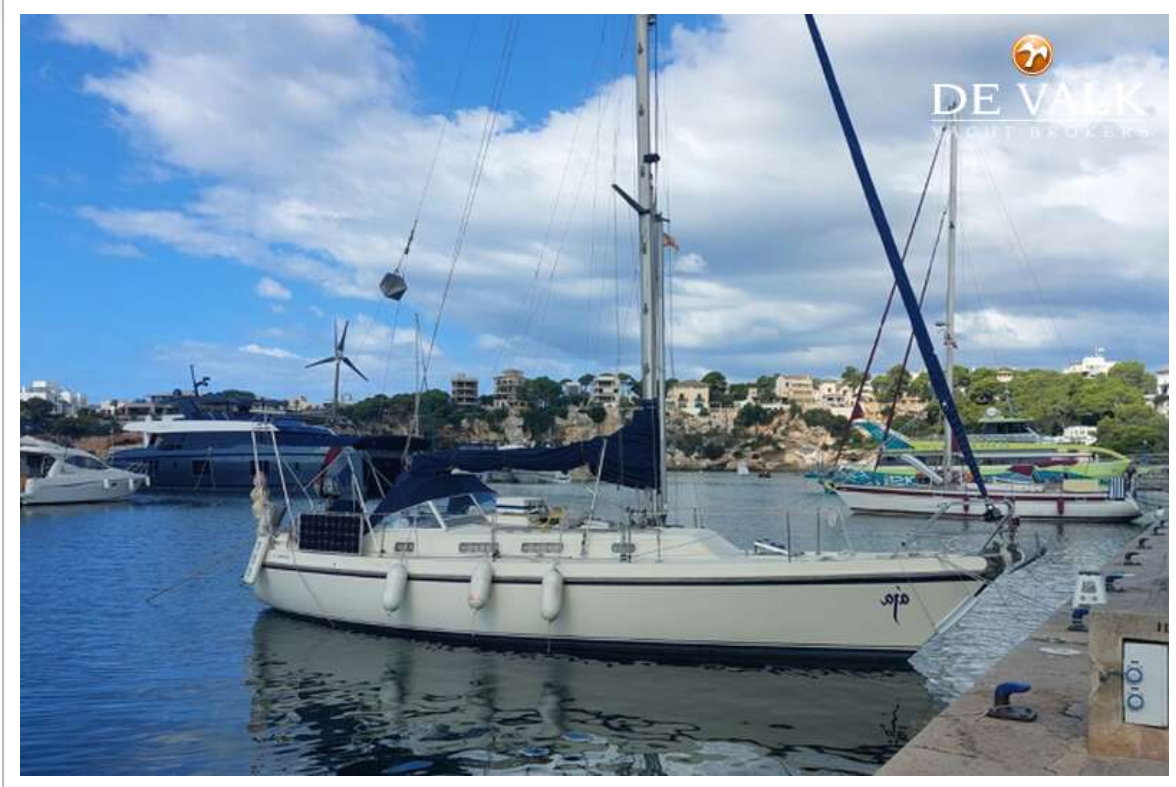
Gangway	(needs to be installed)
Heckdusche	Plastimo
Anker	Rocna 20kg
Ankerkette	Galvanized - 8mm - 60m
Anker 2	CQR Pflugschar 18kg
Ankerwinde	elektrisch Lewmar + Remote control (Lofrans)
Beiboot	aufblasbar Zodiac 2,70m
Ausserborder	Yamaha 4HP (needs inspection)
See Reling	+ new stern railing with bracket
Rettungsinsel	ja
Rettungsinsel (Pers)	4
Letzte Wartung Rettungsinsel	2017
Sicherheitsleine auf Deck	ja
Radar Reflektor	ja
Fenderkissen	ja
Radio	Built-in Kenwood
Lautsprecher im Pflicht	2 (2016)
Lautsprecher im Salon	2 (2016)
Weitere Info	All lighting is LED

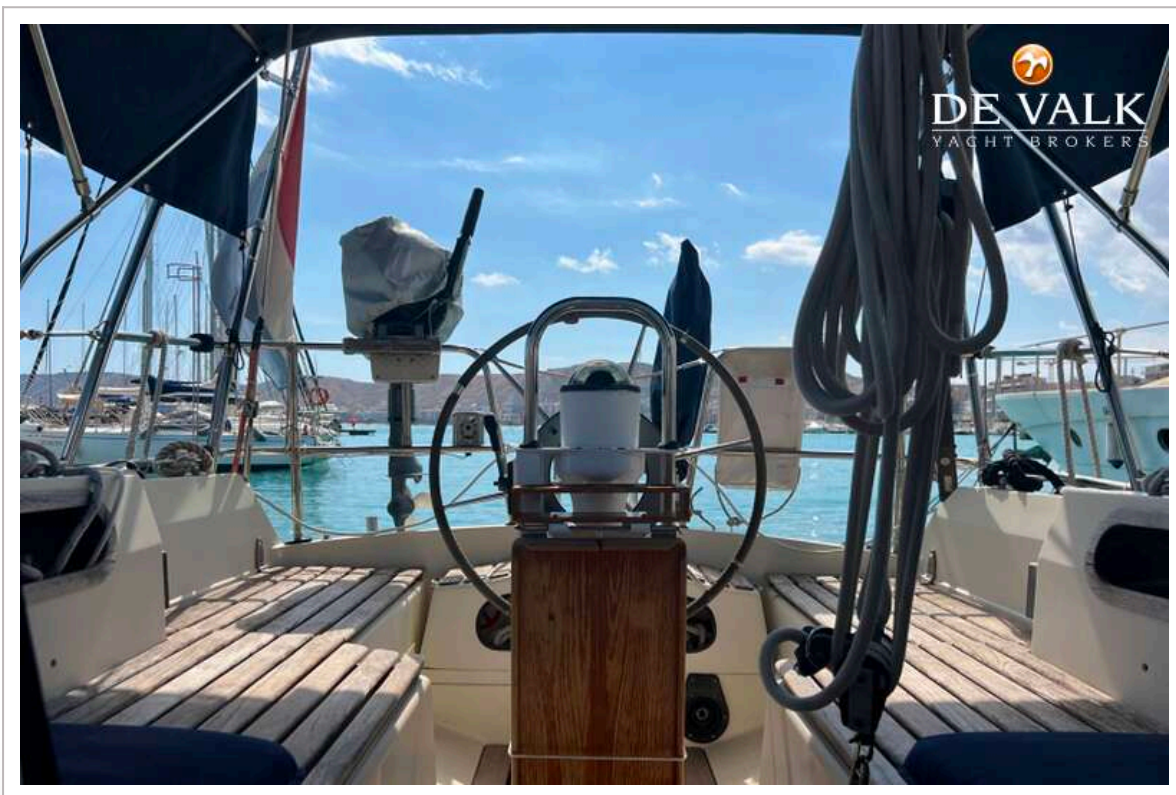
RIGG

Stehendes Gut	Replaced in 2016/2017
Marke Mast	Seldén + tri-color top light
Material Mast	Aluminium
Großsegel	23,9 sq m
Genua	33 sq m
Rollreiffanlage	Furlex
Gennaker	Momentum
Genua Schotwischen	Self-tailing Lewmar EVO
Weitere Info	Removable inner forestay - Navtec backstay tensioner
Weitere Info	Foldable mast steps





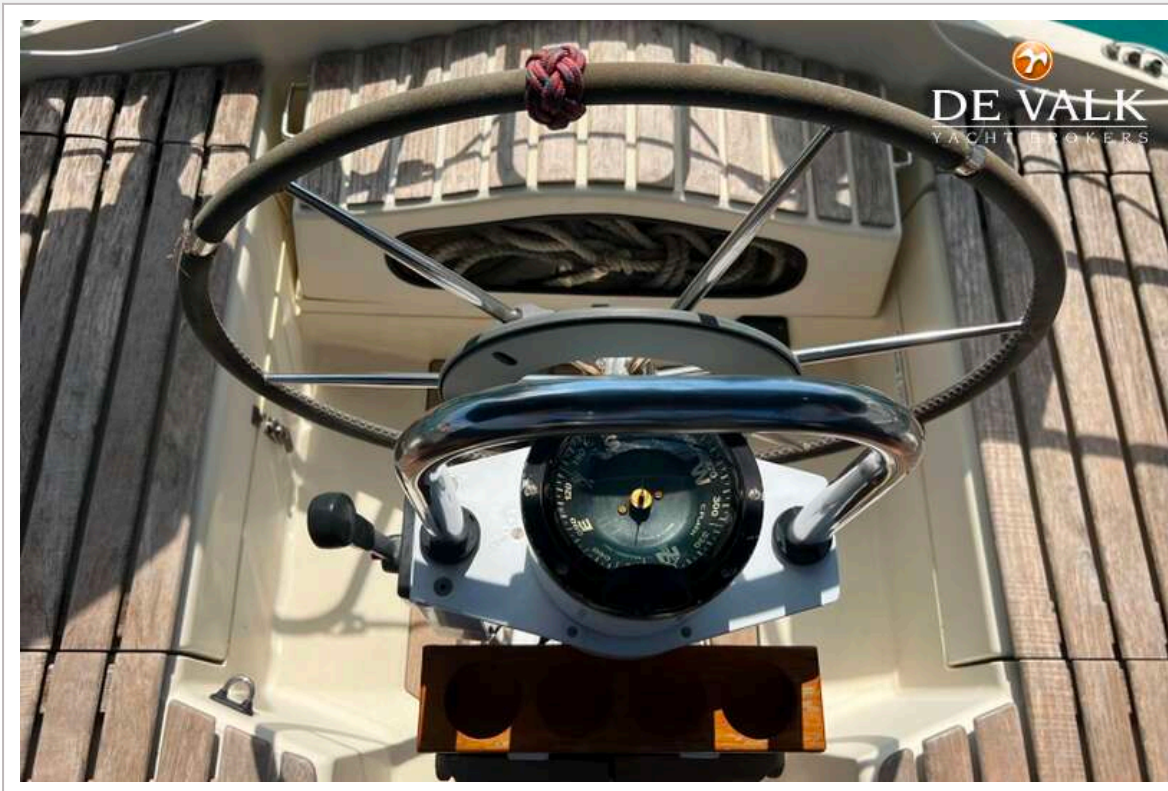


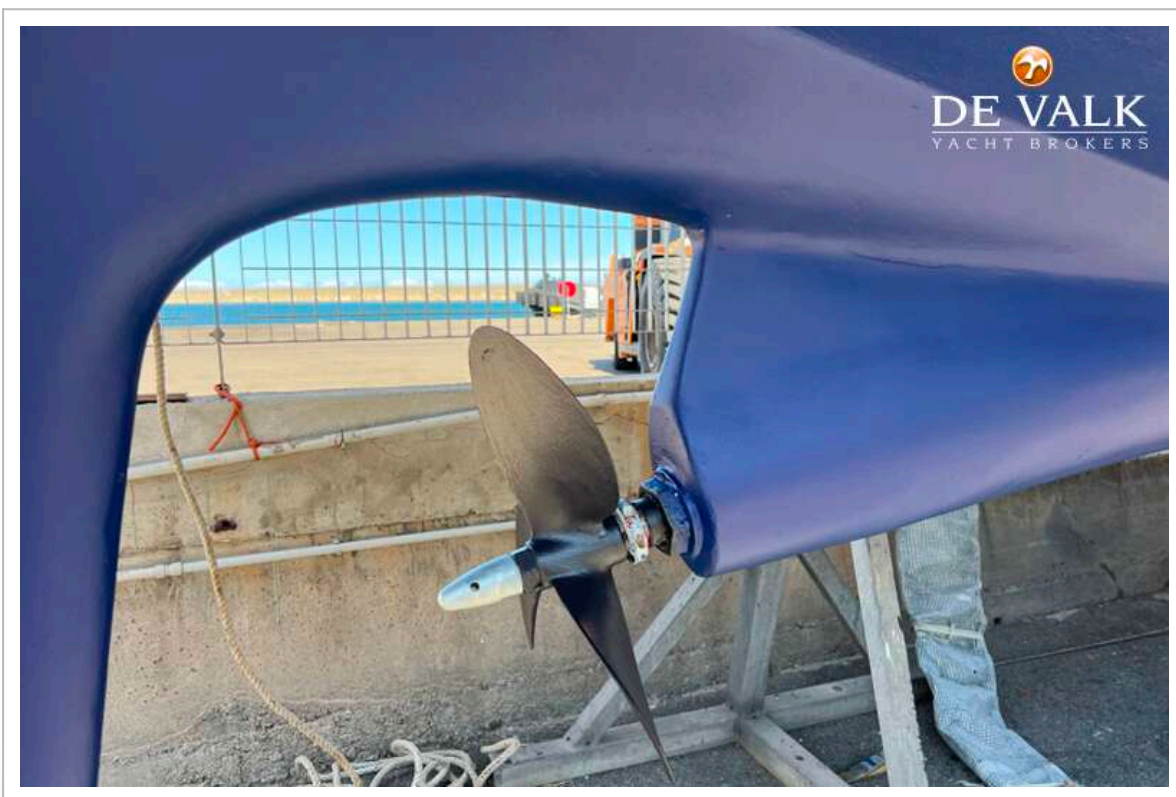


CONTEST 35S

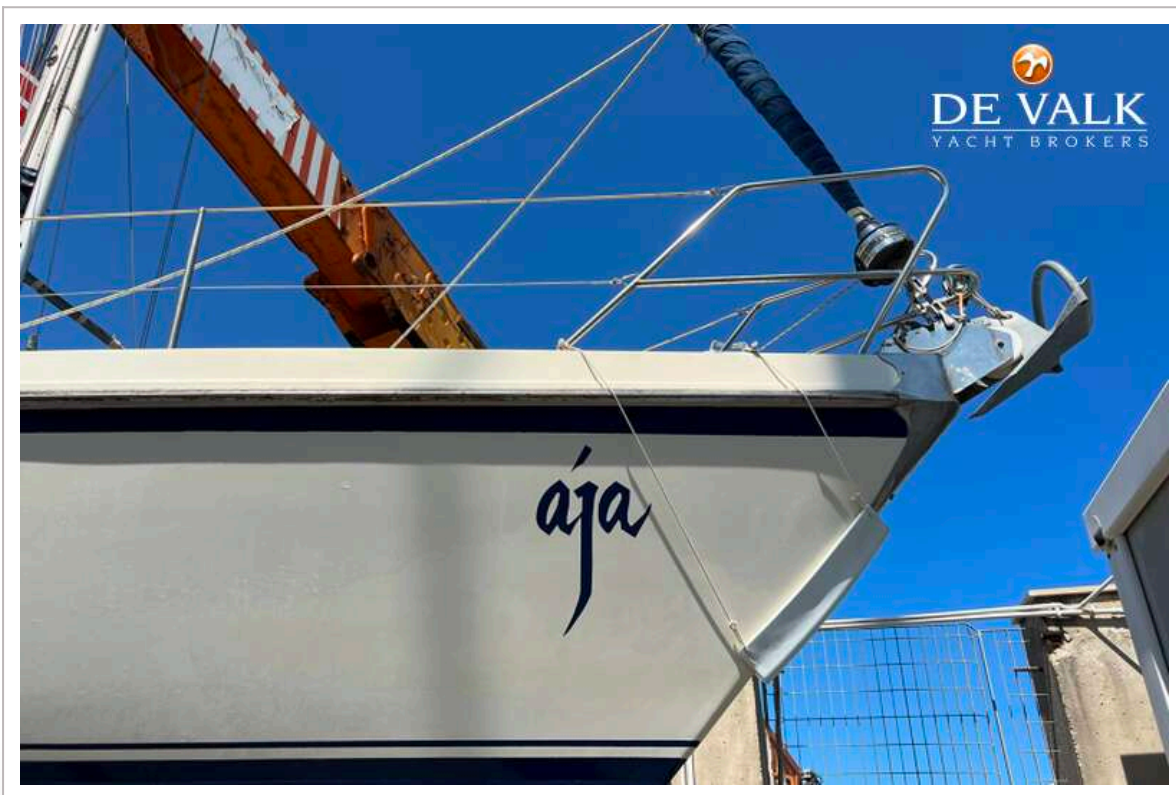
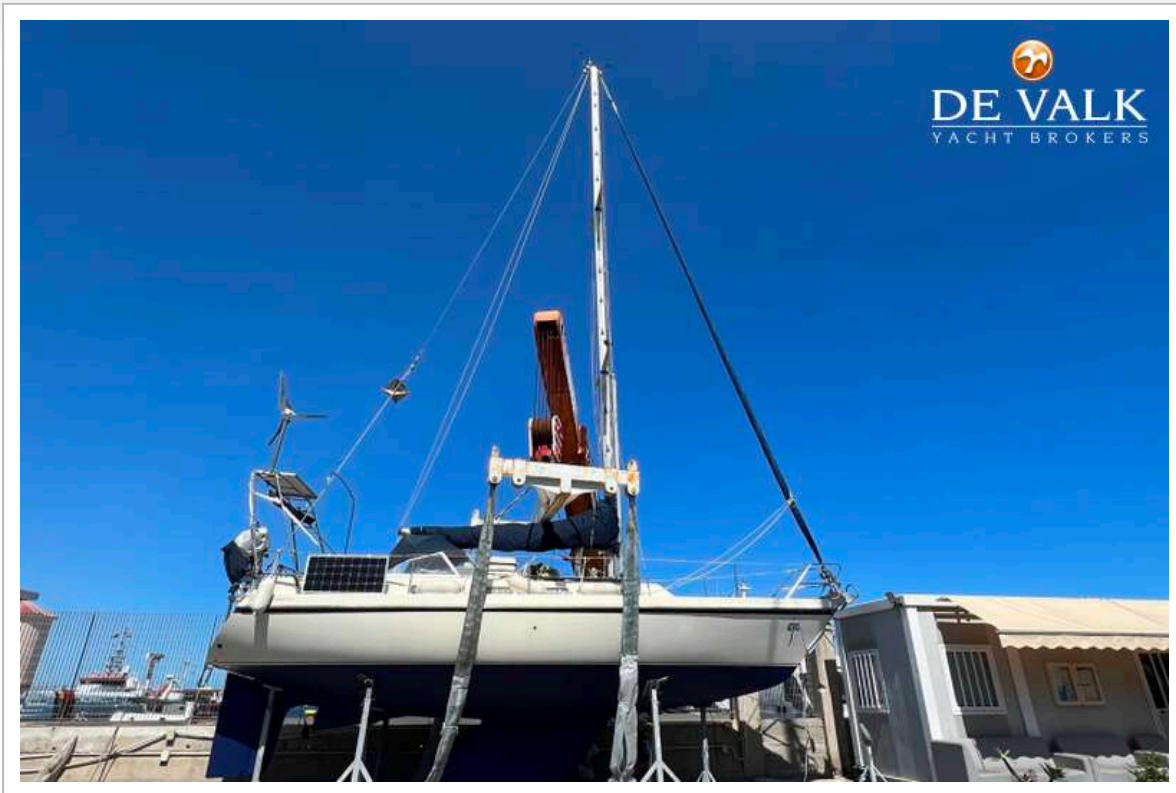


CONTEST 35S

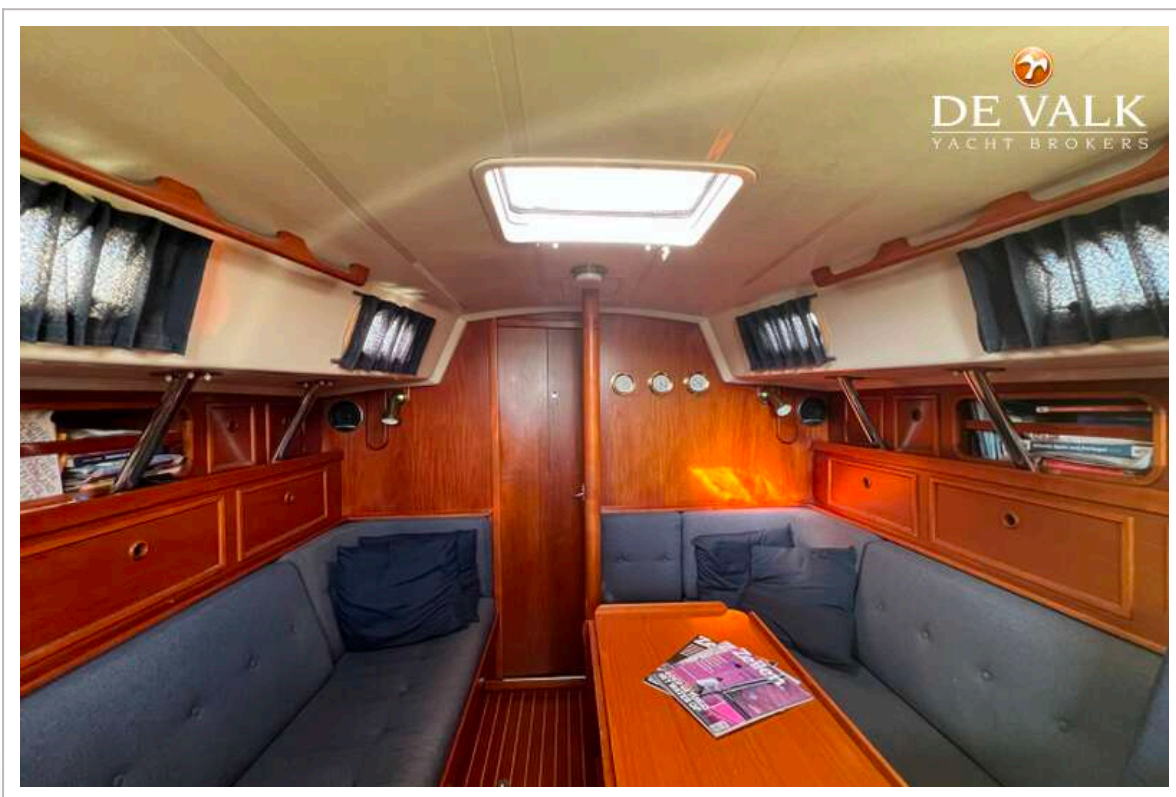




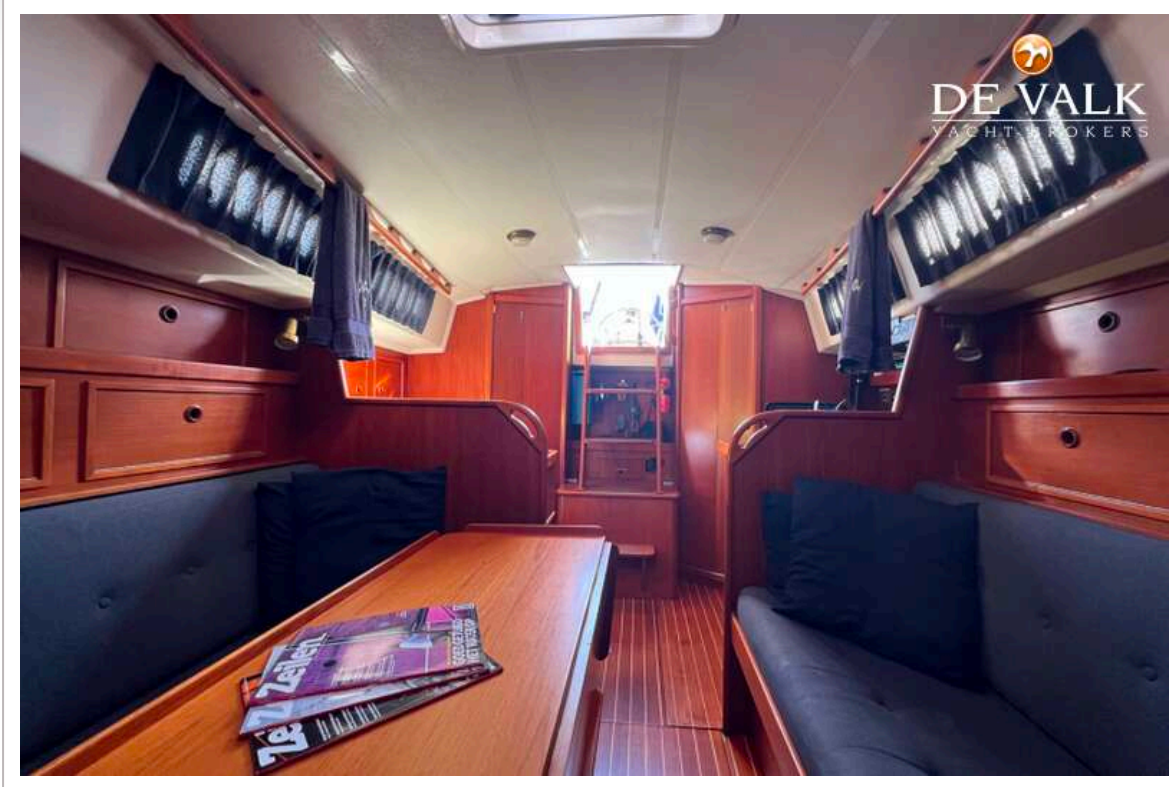




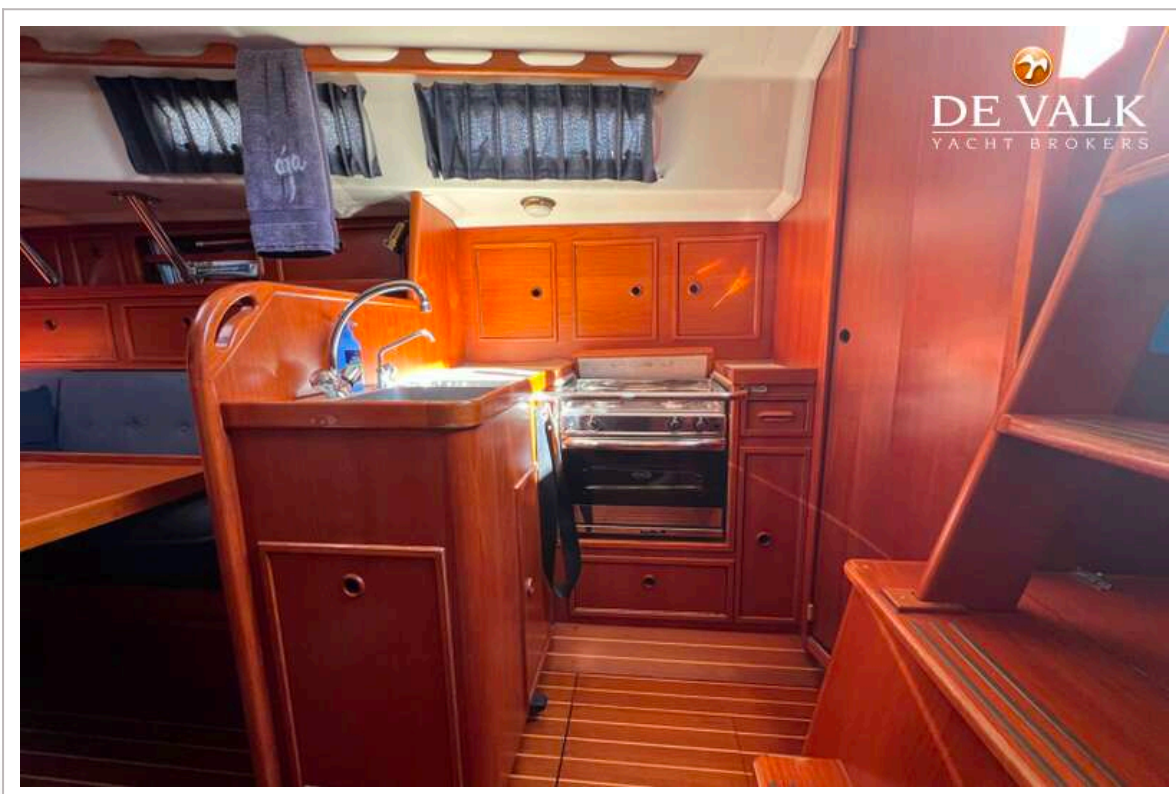
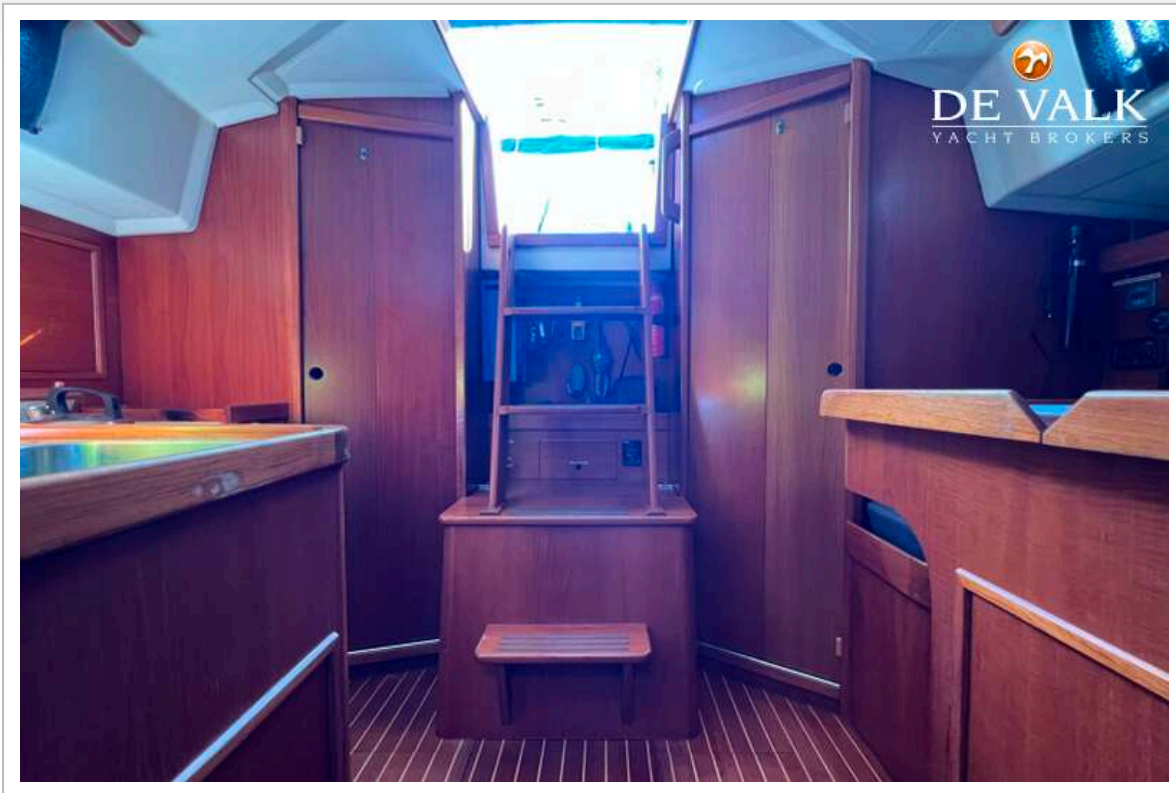
CONTEST 35S



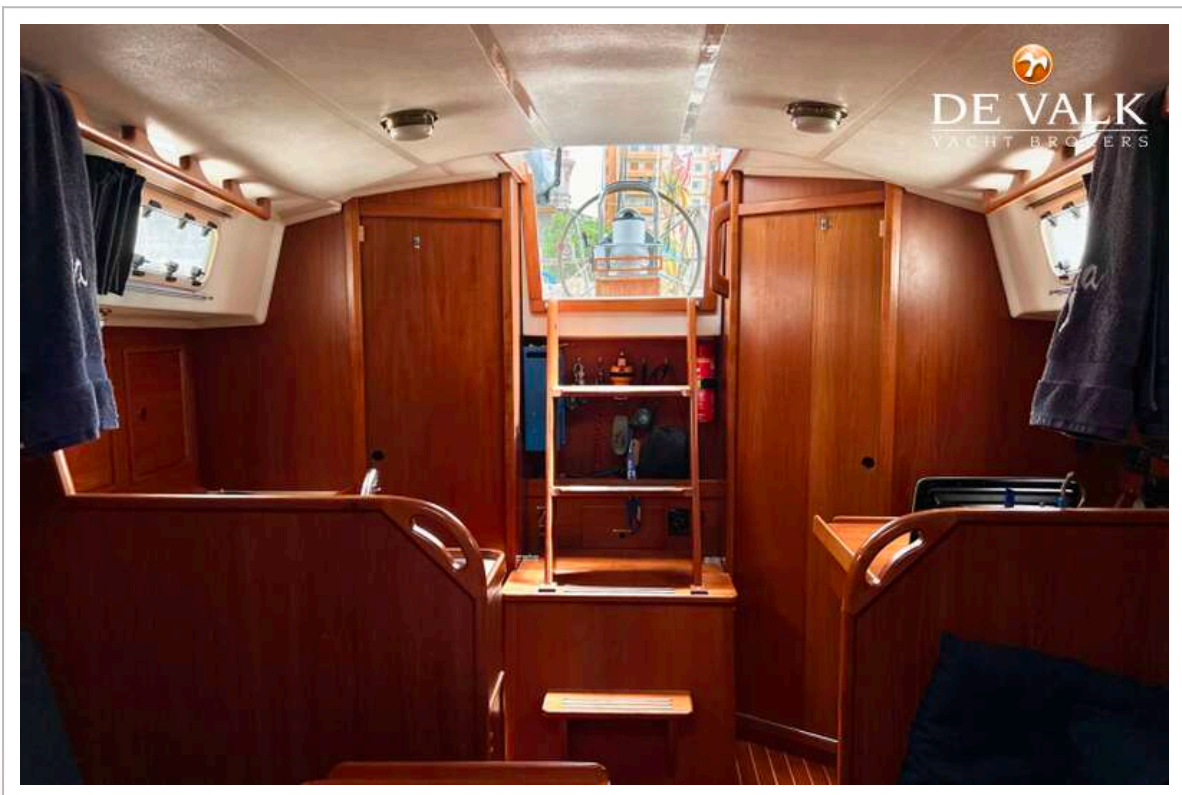
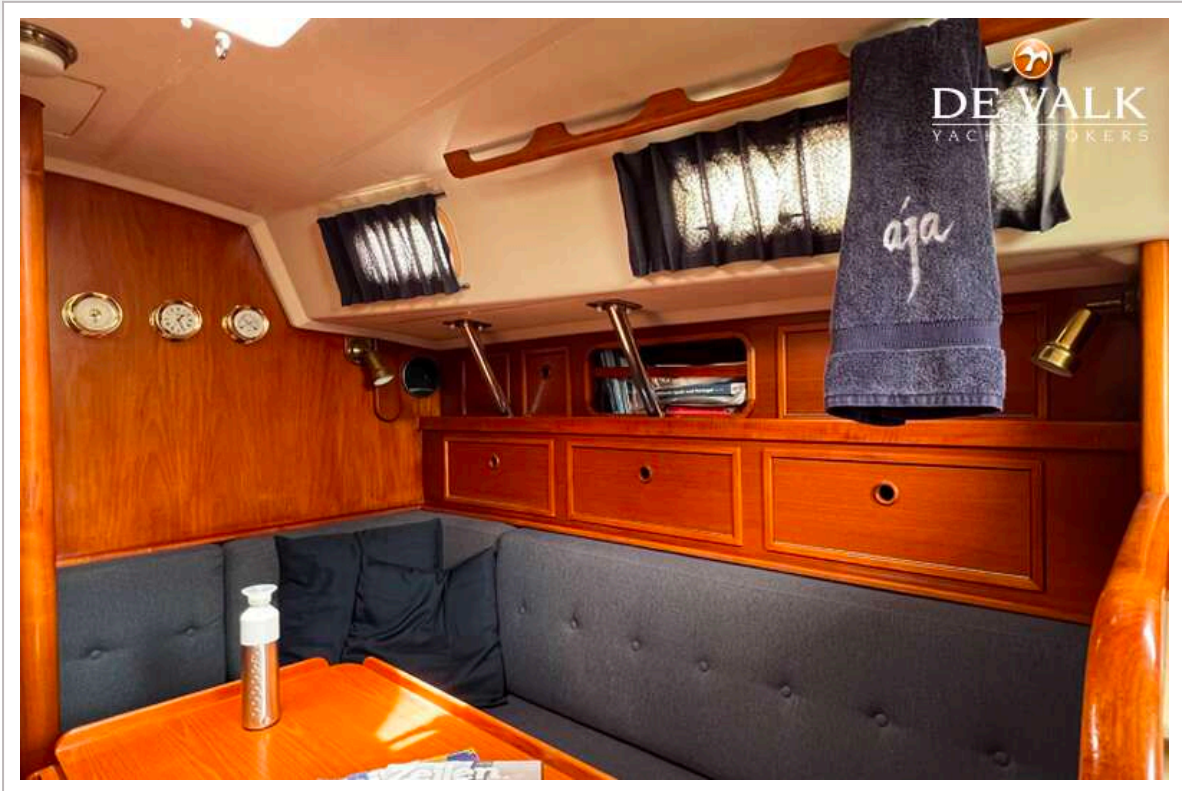
CONTEST 35S



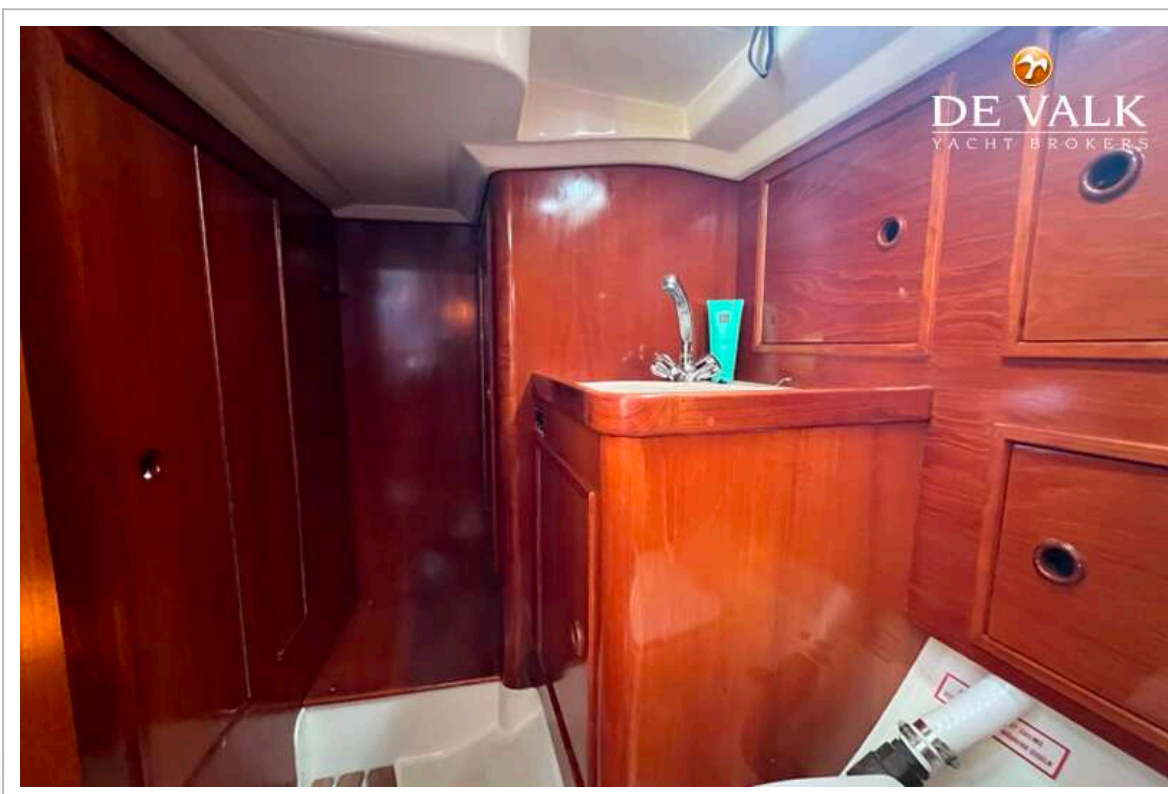
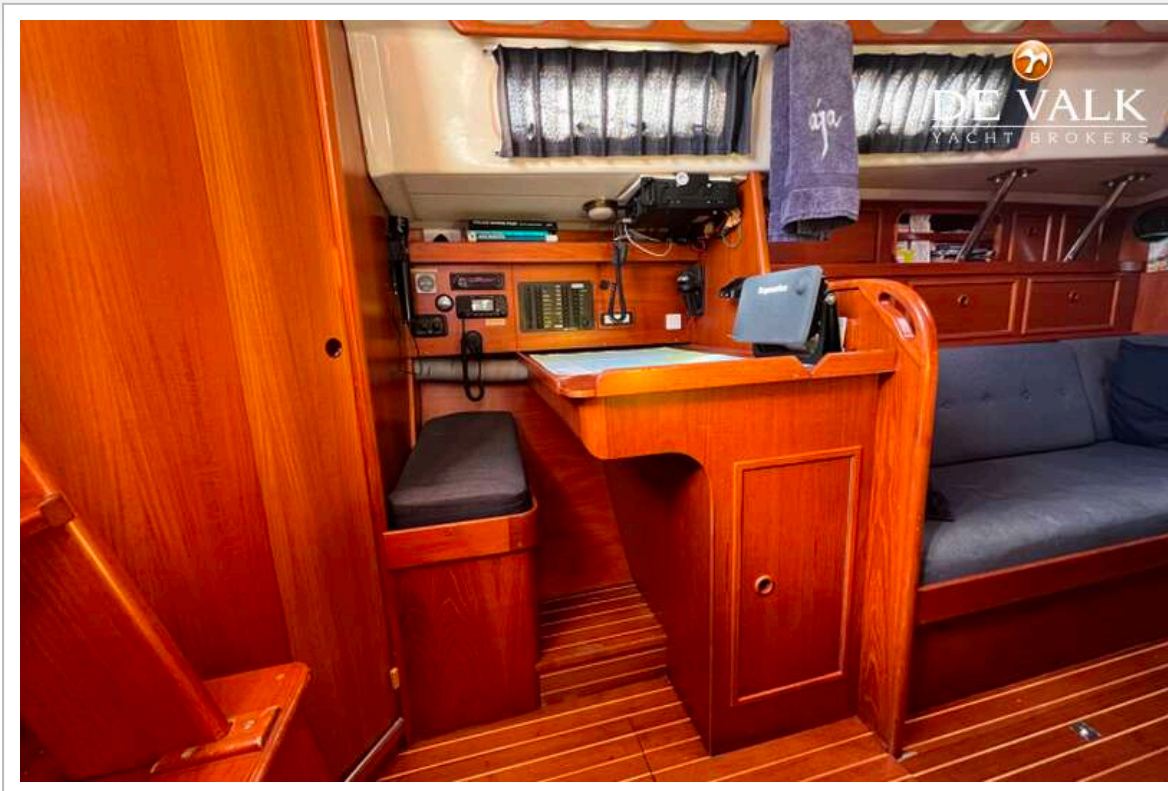
CONTEST 35S



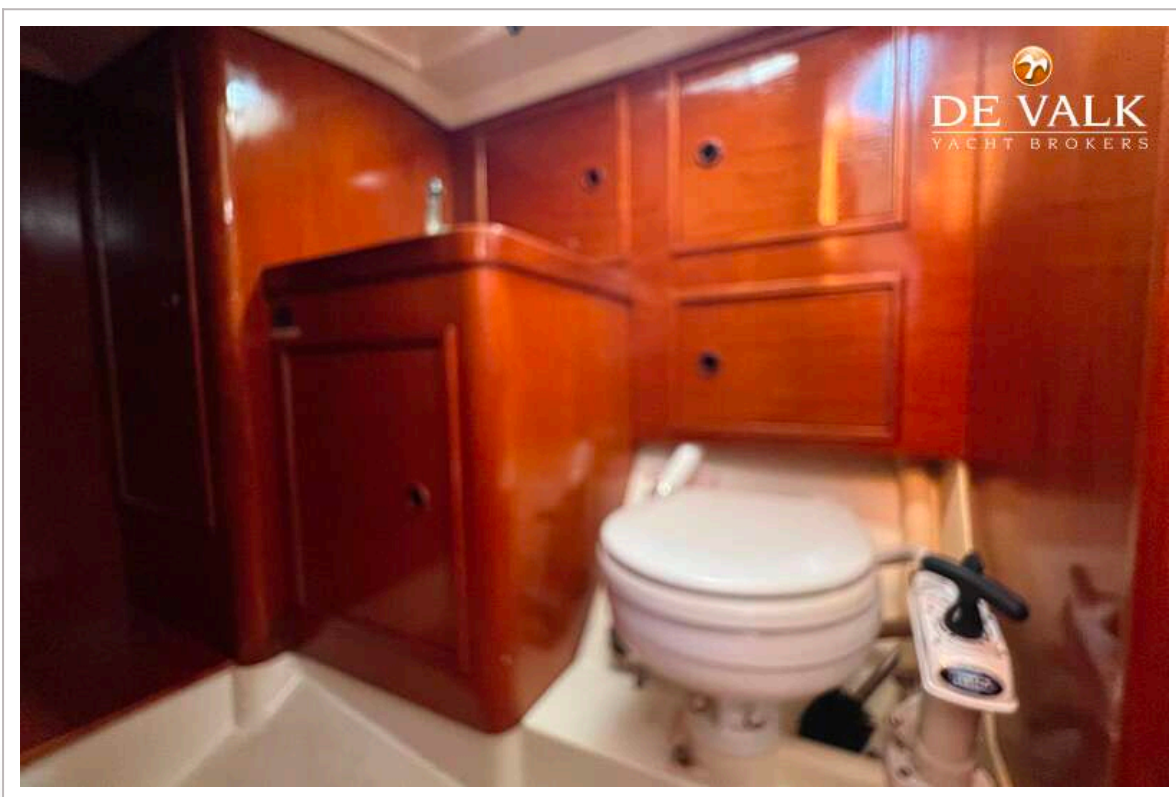
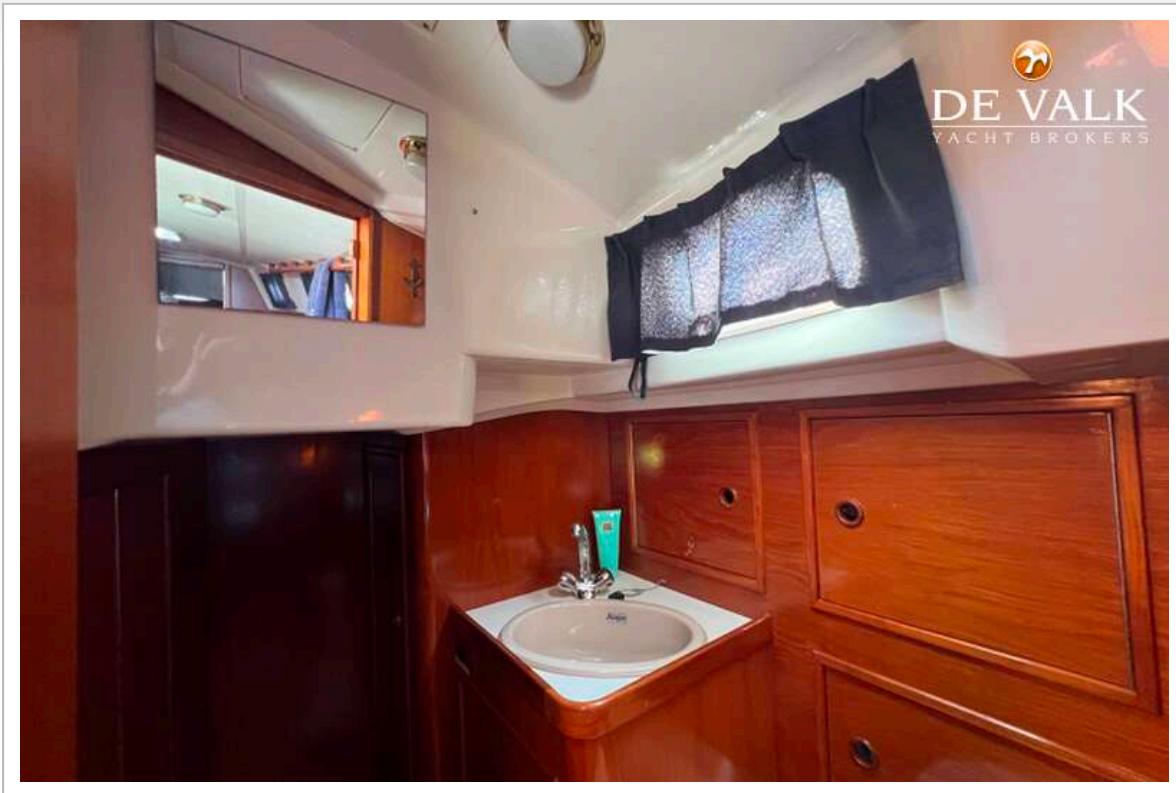
CONTEST 35S



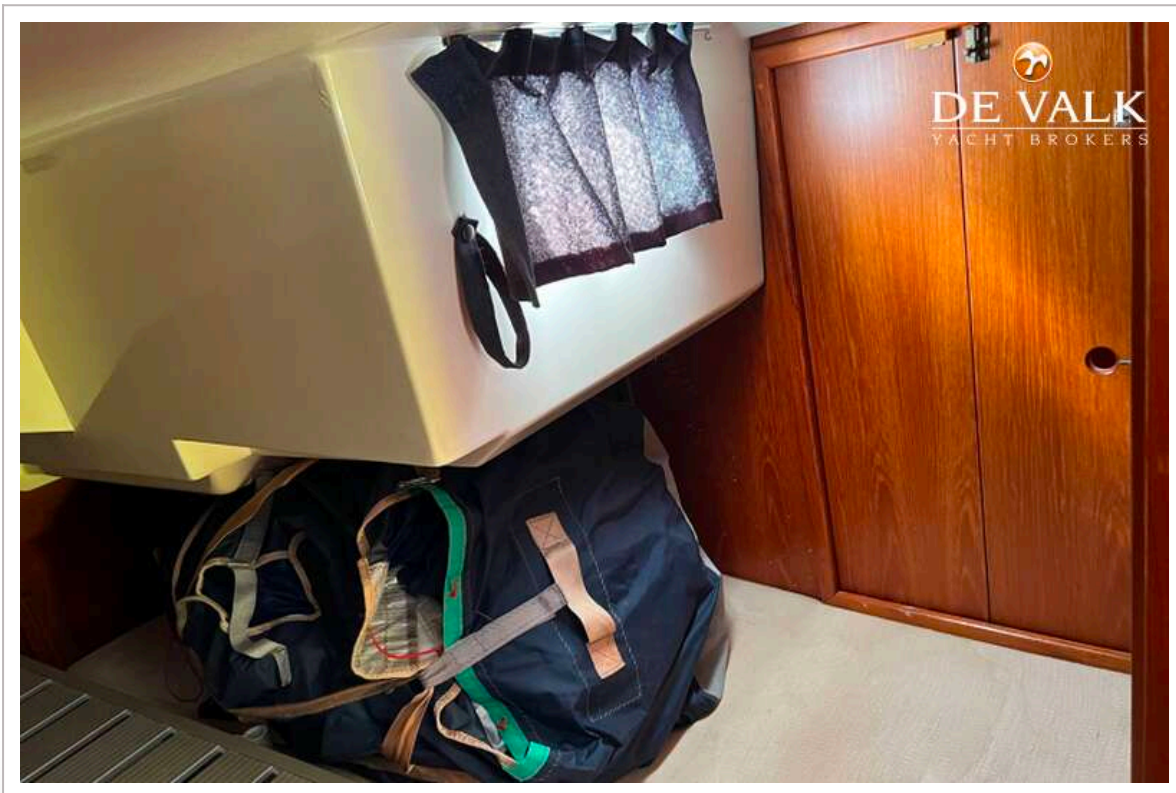
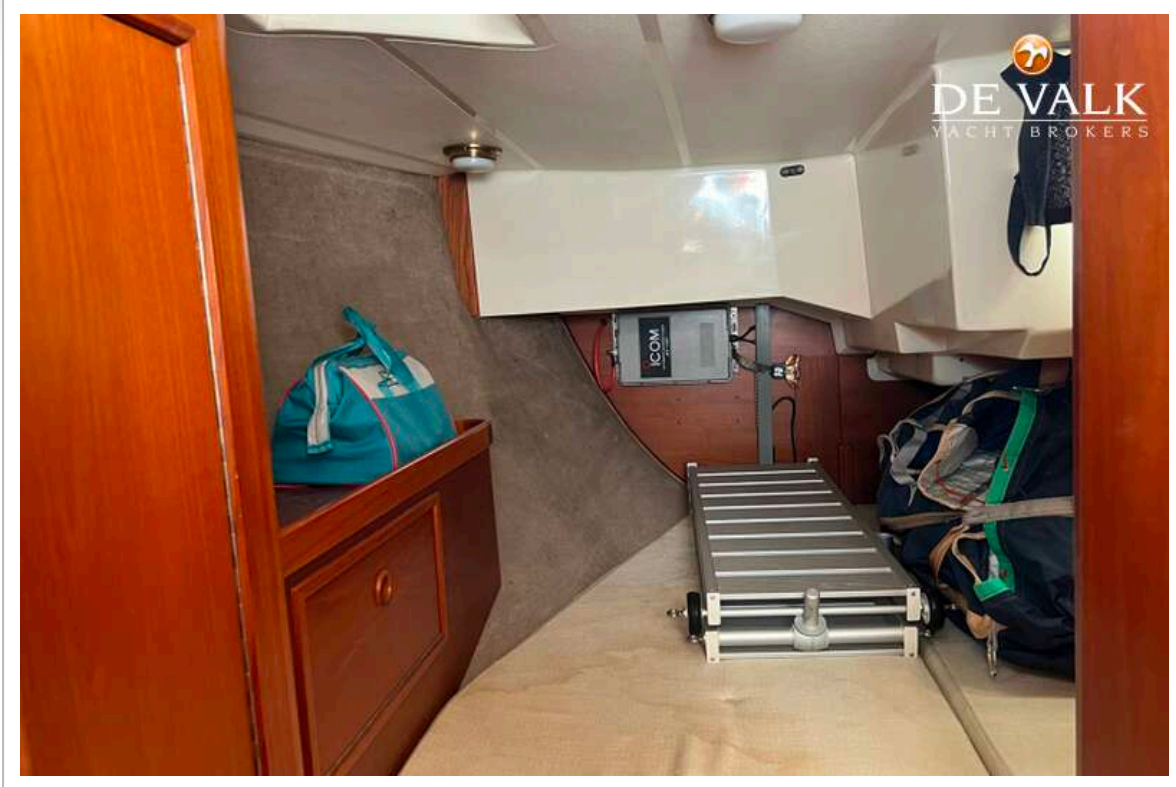
CONTEST 35S



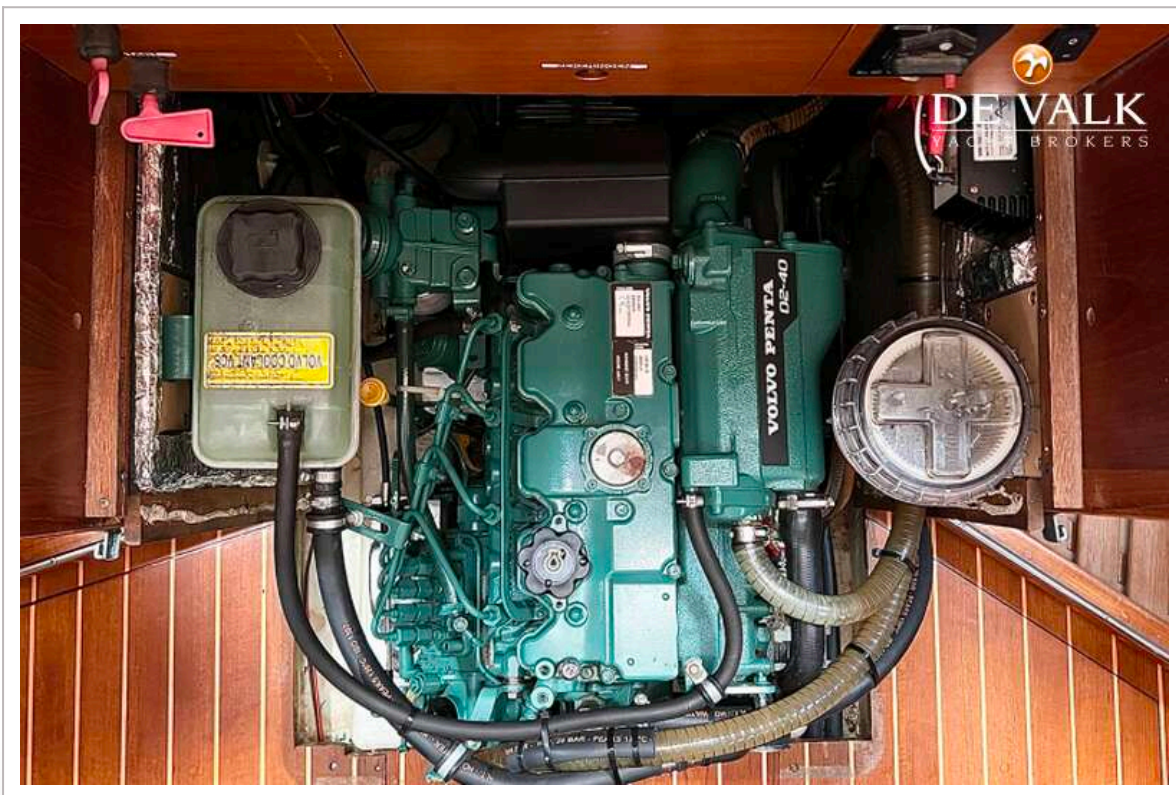
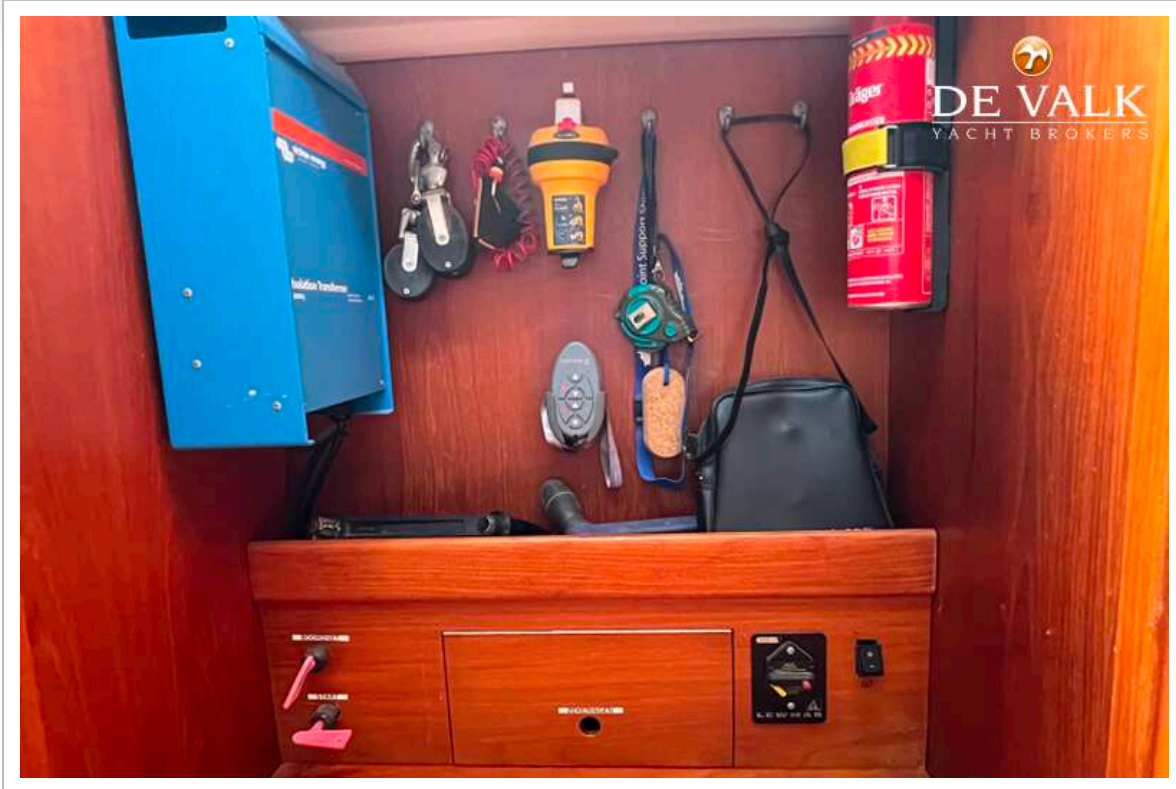
CONTEST 35S



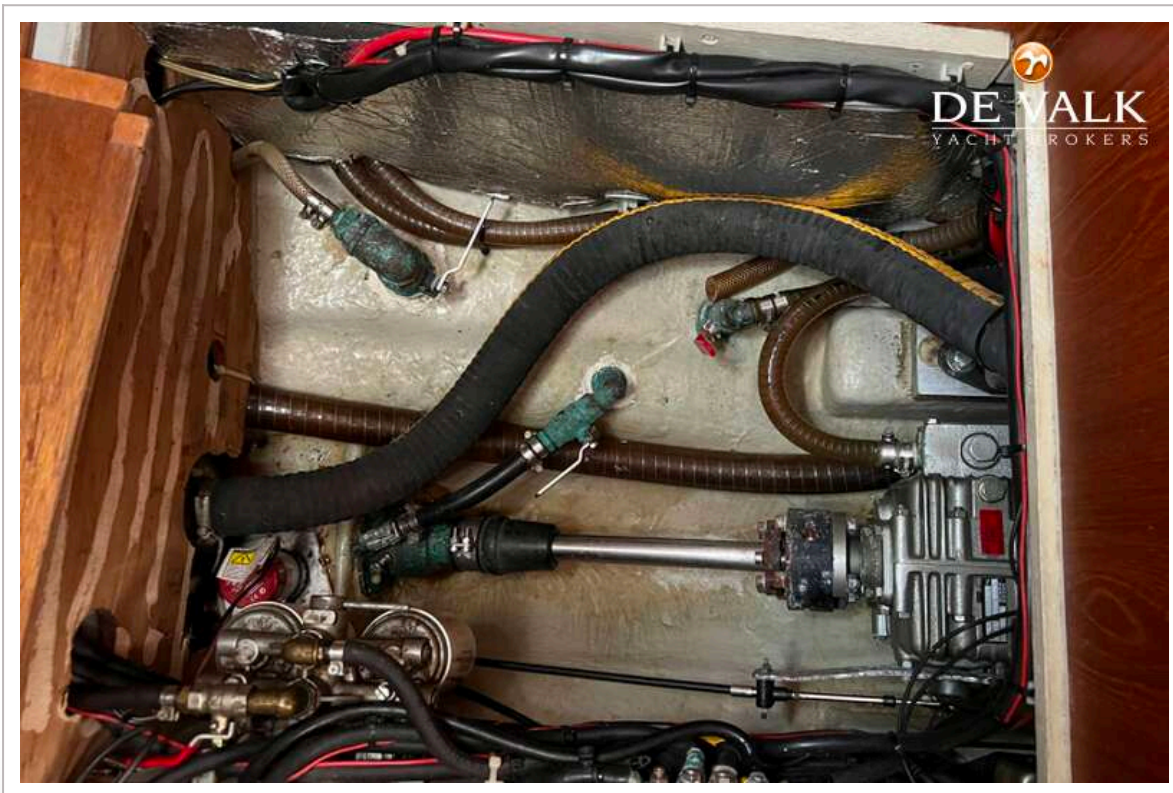
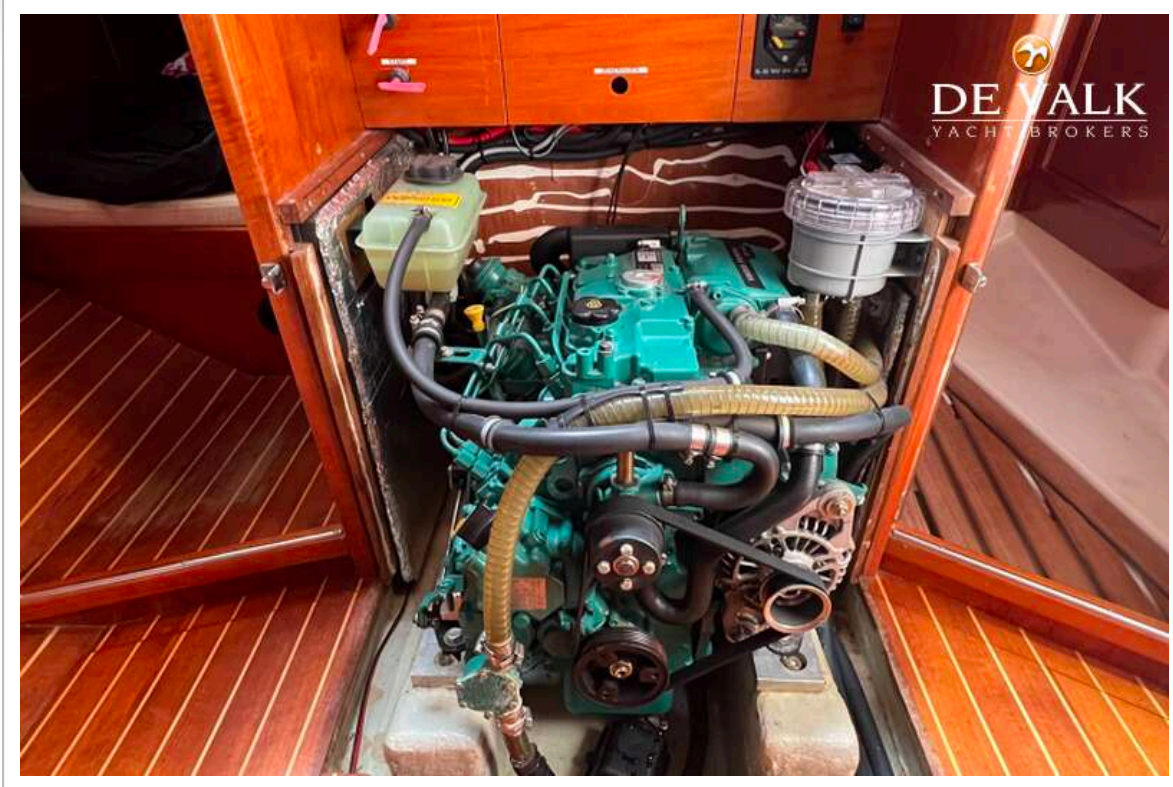
CONTEST 35S



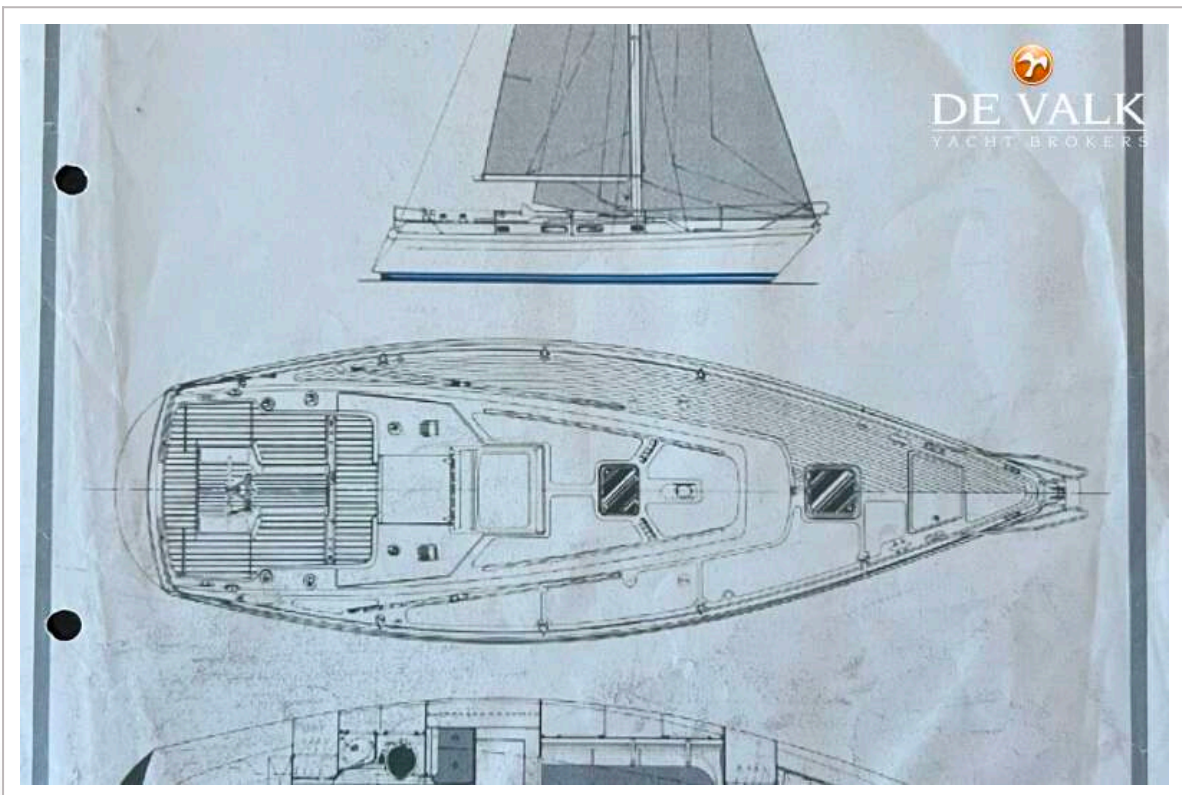
CONTEST 35S

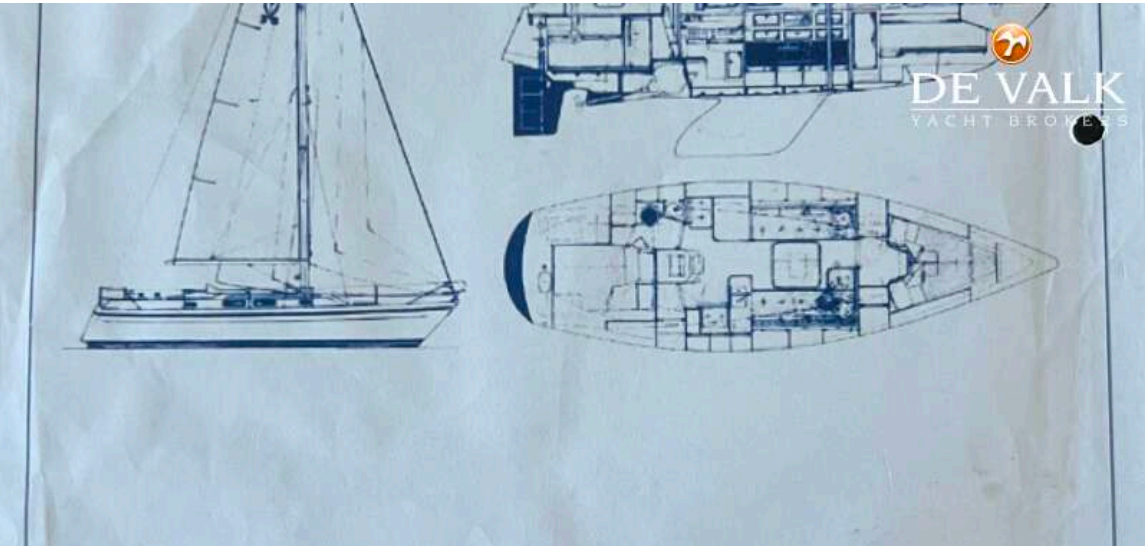


CONTEST 35S



CONTEST 35S

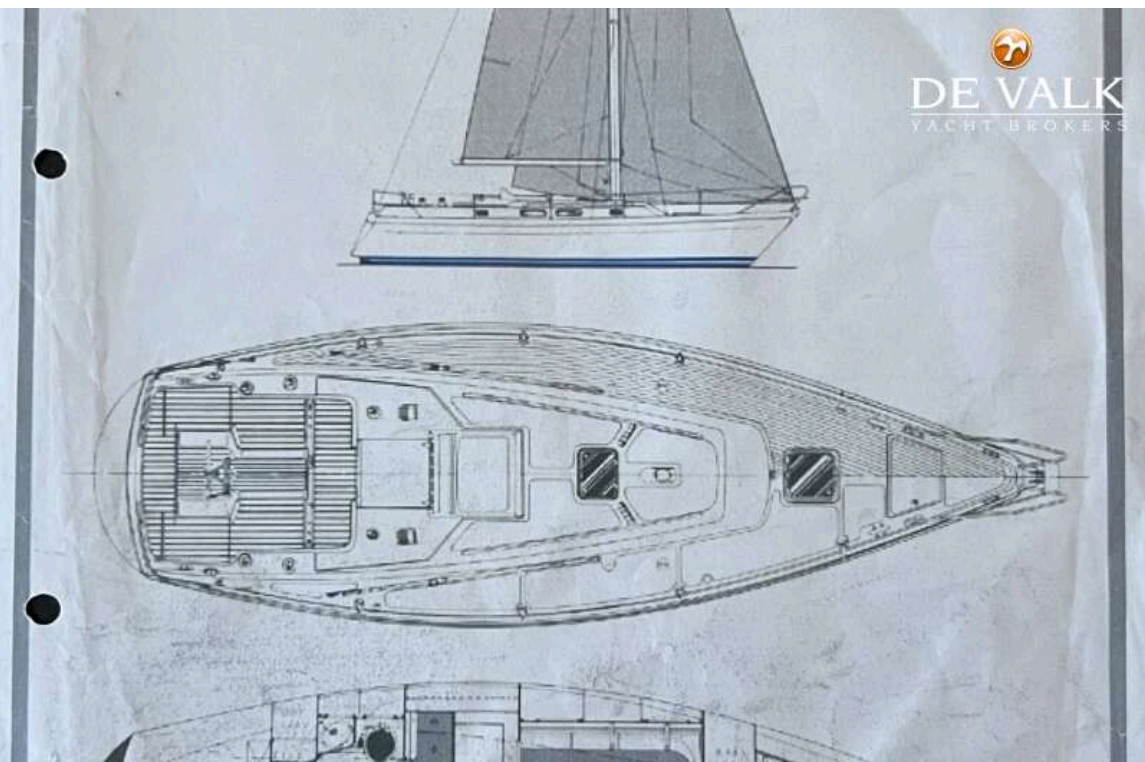




DE VALK
YACHT BROKERS

SPECIFICATIONS AND ORDER FORM

Length hull	10.90 m	35' 8"	Mastheight above waterline	15.70 m	53' 11"
Length waterline	9.30 m	30' 5"	Mainsail	23.9 m ²	257 sq.ft.
Maximum beam	3.52 m	11' 5"	Genoa	33.0 m ²	355 sq.ft.
Draft standard keel	1.90 m	6' 2"			



DE VALK
YACHT BROKERS

