



DE VALK  
YACHT BROKERS



## SEALINE T50



DE VALK  
YACHT BROKERS

## KOMMENTARE DES MAKLERS

This 2006 Sealine T50 offers an exceptional blend of style, comfort, and performance. Powered by twin diesel engines, she delivers a smooth and confident ride, ideal for coastal cruising or extended passages. The spacious flybridge and aft deck provide excellent entertaining space, while the light-filled saloon, fully equipped galley, and three well-appointed cabins offer luxurious accommodation for family and guests. Meticulously maintained and presented in excellent condition, this T50 is ready to be enjoyed immediately by her next discerning owner.

*Sofia Iliia-Salvanou*

## TECHNISCHE DATEN

<b>Maße</b>	15.34 x 0.00 x 0.00 (m)	<b>Werft</b>	
<b>Baujahr</b>	2006	<b>Kabinen</b>	
<b>Material</b>	GFK	<b>Kojen</b>	
<b>Motor(en)</b>	2 x Cummins QSC 8.3 diesel	<b>PS/kW</b>	2 x 1,080.00 (PS), 794.88 (kW)
<b>Angebotspreis</b>	€ 285.000 (MwSt. Nicht bezahlt)	<b>Liegeplatz</b>	beim Verkaufsbüro

## KONTAKT

<b>Verkaufsbüro</b>	De Valk Corfu	<b>Telefon</b>	(+30) 6948681503
<b>Adresse</b>	New Port of Corfu, near Gouvia Marina 490 83 Corfu GR	<b>E-Mail</b>	corfu@devalk.nl

## HAFTUNGSAUSSCHLUSS

Diese Angaben erfolgen nach bestem Wissen, können jedoch nicht garantiert werden.



## ALLGEMEIN

<b>Modell</b>	SEALINE T50
<b>Typ</b>	Motoryacht
<b>Rumpflänge (m)</b>	15,34
<b>Baujahr</b>	2006
<b>Rumpfmateri al</b>	GFK
<b>Pflicht Bedeckung</b>	Teak Self-draining, non- slip
<b>Radar Träger</b>	Forward-facing with lights
<b>Radsteuerung</b>	hydraulik
<b>Radsteuerung auf Flybridge</b>	Central

## UNTERKUNFT

<b>Achterdeck</b>	90cm extendable and moveable
<b>Klima Anlage</b>	230V + shore support system
<b>Schiebetür zum Achterdeck</b>	3 part - curved - stainless steel
<b>Spülbecken</b>	+ mixer tap, recessed
<b>Ofen</b>	Combined with grill
<b>Dunstabsauge</b>	ja
<b>Mikrowelle</b>	ja
<b>Kuhlschrank</b>	ja
<b>Gefrier Truhe</b>	ja
<b>Geschirrspulmaschine</b>	Built-in
<b>Eismaschine</b>	On flybridge
<b>Eignerkabine</b>	Doppelbett
<b>Kleiderschrank</b>	ja
<b>Badezimmer</b>	en suite
<b>Toilette System</b>	vakuum NEW silent
<b>Gästekabine 1</b>	Doppelbett
<b>Kleiderschrank</b>	ja
<b>Badezimmer</b>	getrennt
<b>Toilette System</b>	vakuum NEW silent



<b>Gästekabine 2</b>	Stockbett
<b>Kleiderschrank</b>	ja
<b>Badezimmer</b>	getrennt
<b>Wet-Bar</b>	With cool box, sink and waste bin
<b>Weitere Info</b>	NEW Italian latex ultra-comfort mattress in all cabins
<b>Weitere Info</b>	NEW carpets throughout

## MASCHINEN

<b>Motoranzahl</b>	2
<b>Marke</b>	Cummins
<b>Typ</b>	QSC 8.3
<b>PS</b>	1080
<b>kW</b>	794.88
<b>Kraftstoffart</b>	Diesel
<b>Antrieb</b>	Schraubenwelle
<b>Bugschraube</b>	ja
<b>Hand Bilgenpumpe</b>	ja
<b>Elektrische Bilgenpumpe</b>	ja
<b>Generator</b>	Koehler
<b>Batterien</b>	ja
<b>Batterie Ladegerat</b>	ja
<b>Solar panele</b>	Victron regulator + inverter
<b>Wasserbereiter</b>	Idromar
<b>Trimklappen</b>	+ Lenco controls
<b>Weitere Info</b>	Engine diagnostics indicator
<b>Weitere Info</b>	Engine room fans

## NAVIGATION

<b>Kompass</b>	ja
<b>Kompass auf der Flybridge</b>	ja
<b>UKW</b>	X2 Raymarine



<b>Autopilot</b>	ja
<b>GPS</b>	Raymarine
<b>Kamera</b>	Interior + exterior
<b>Navigation Beleuchtung</b>	Full set + underwater lights
<b>Suchscheinwerfer</b>	Remote control at both stations

## AUSRÜSTUNG

<b>Feste Fenster</b>	Curved, tinted with stainless steel trim
<b>Kuchenbude</b>	Full set
<b>Bimini</b>	ja
<b>Badeplattform</b>	Teak laid with built-in storage locker
<b>Badeleiter</b>	Edelstahl
<b>Heck-Tür</b>	Port
<b>Heckdusche</b>	Hot + cold water
<b>Anker</b>	+ electric windlass + deck and helm controls
<b>Ankerkette</b>	ja
<b>Beiboot</b>	Williams Jet 285
<b>Zupackenschiene (aufbauten)</b>	Edelstahl
<b>Rettungsinsel</b>	ja
<b>Scheibenwischer</b>	X2 + screen wash
<b>Horn</b>	Luftdruck
<b>TV</b>	X1 in saloon + x2 in cabins
<b>Surround Sound System</b>	ja
<b>Lautsprecher im Pflicht</b>	ja
<b>Lautsprecher im Salon</b>	ja
<b>Lautsprecher im Kabin</b>	ja
<b>Weitere Info</b>	Self-draining anchor locker with fender storage



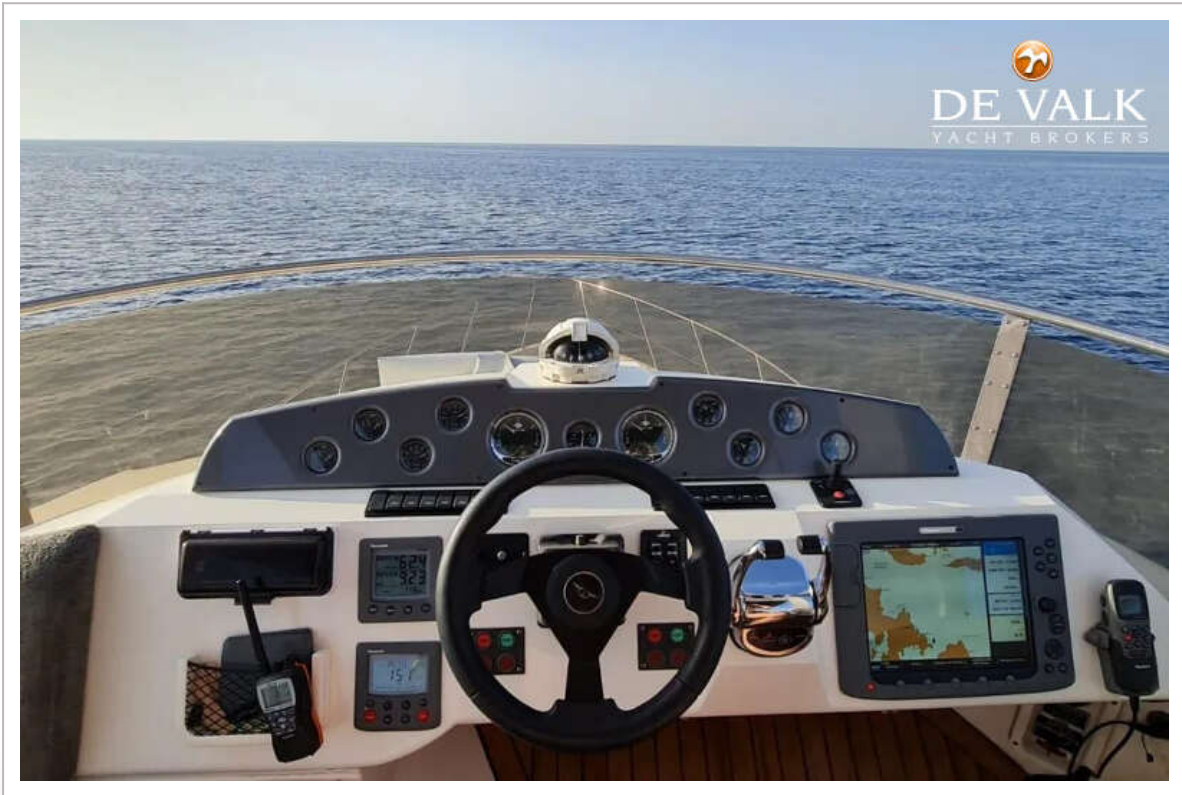
SEALINE T50



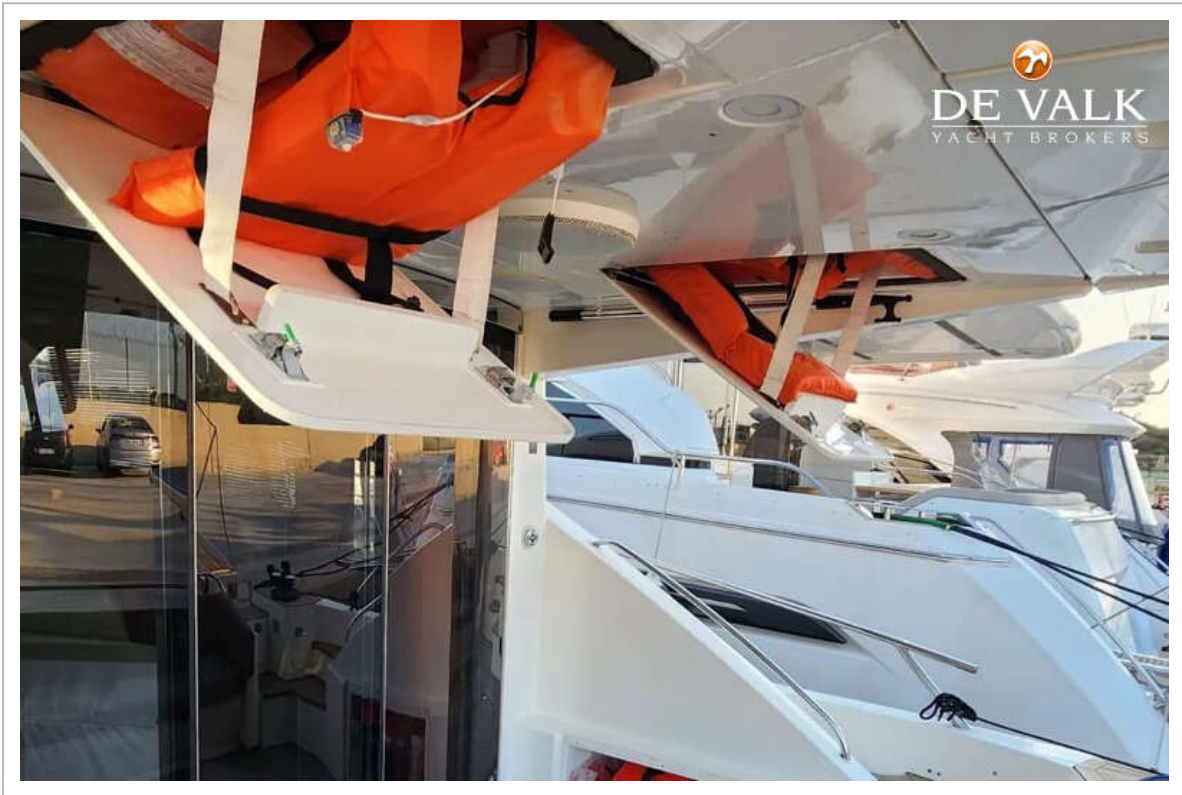
SEALINE T50



# SEALINE T50



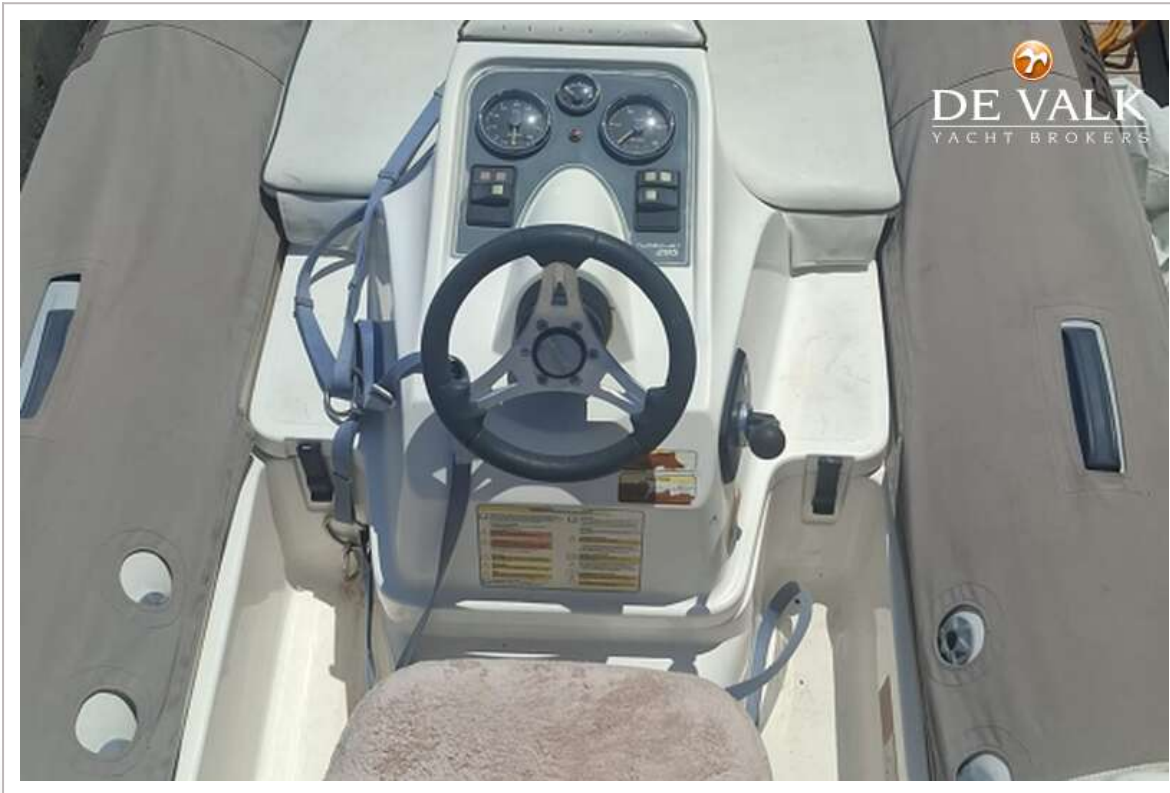
SEALINE T50



SEALINE T50



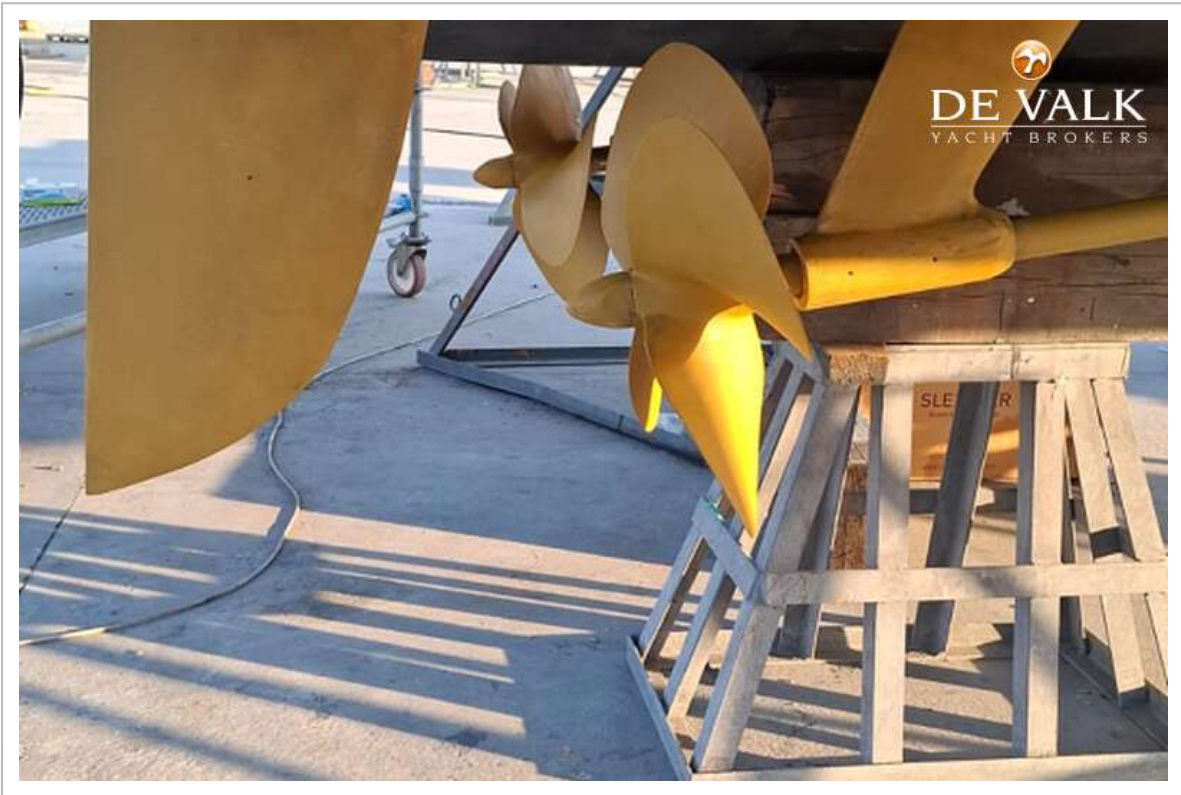
SEALINE T50



SEALINE T50



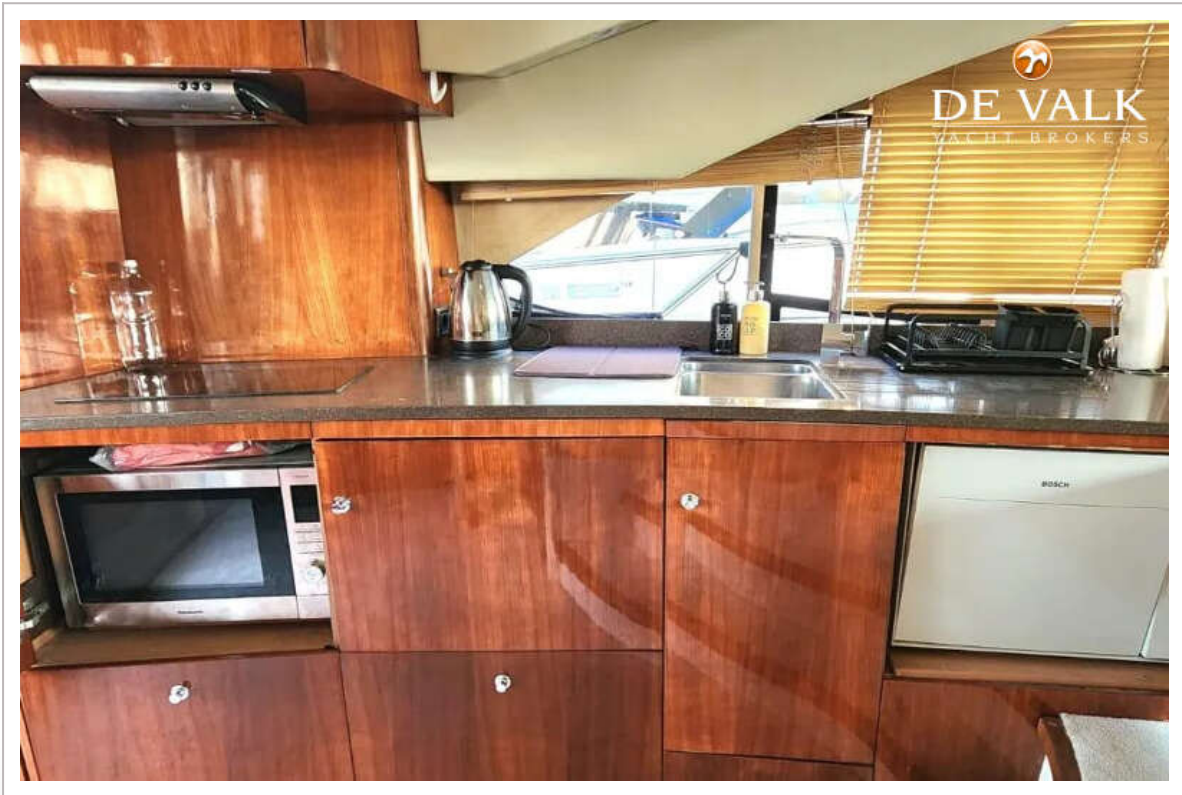
SEALINE T50



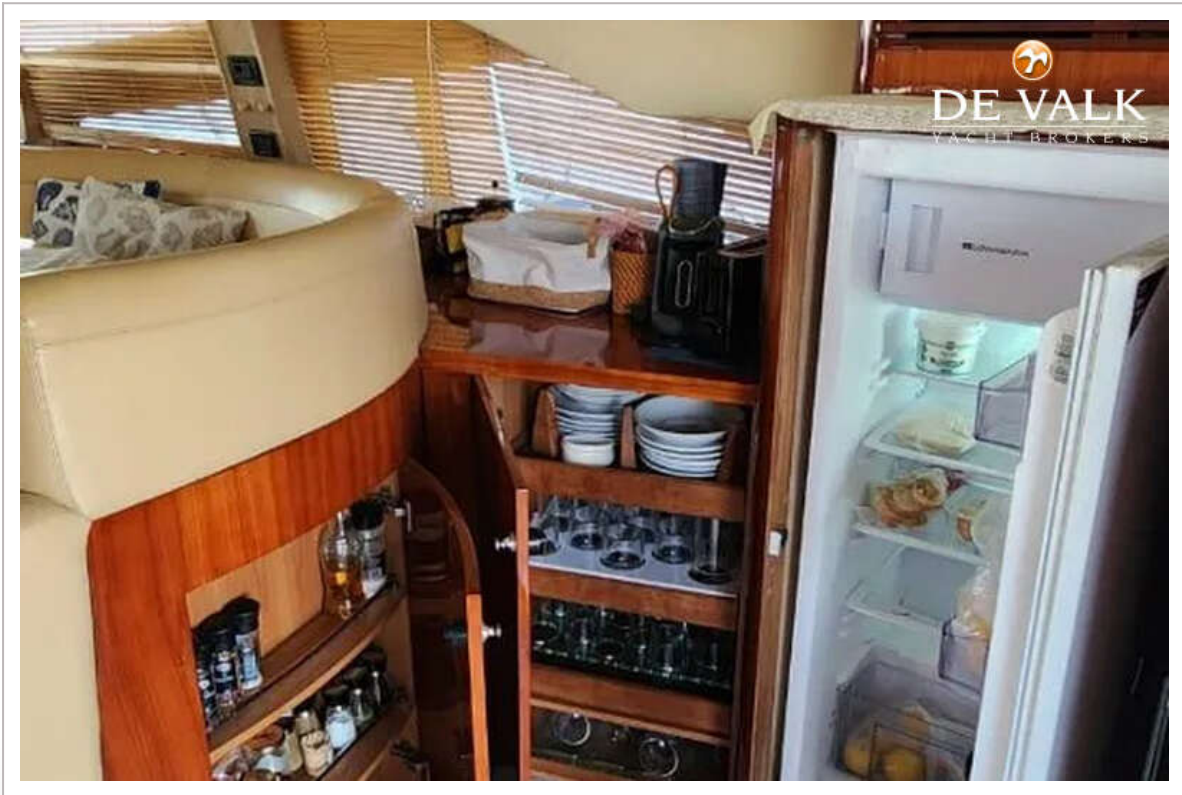
SEALINE T50



SEALINE T50



SEALINE T50



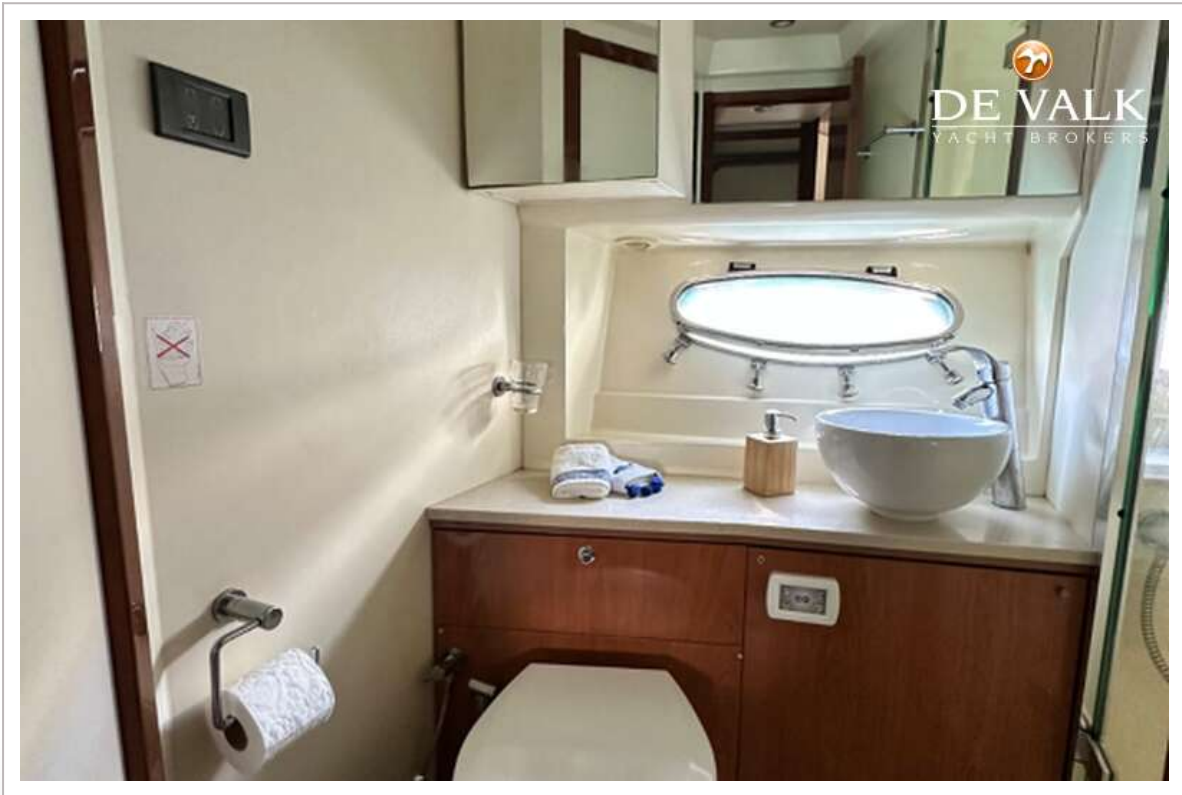
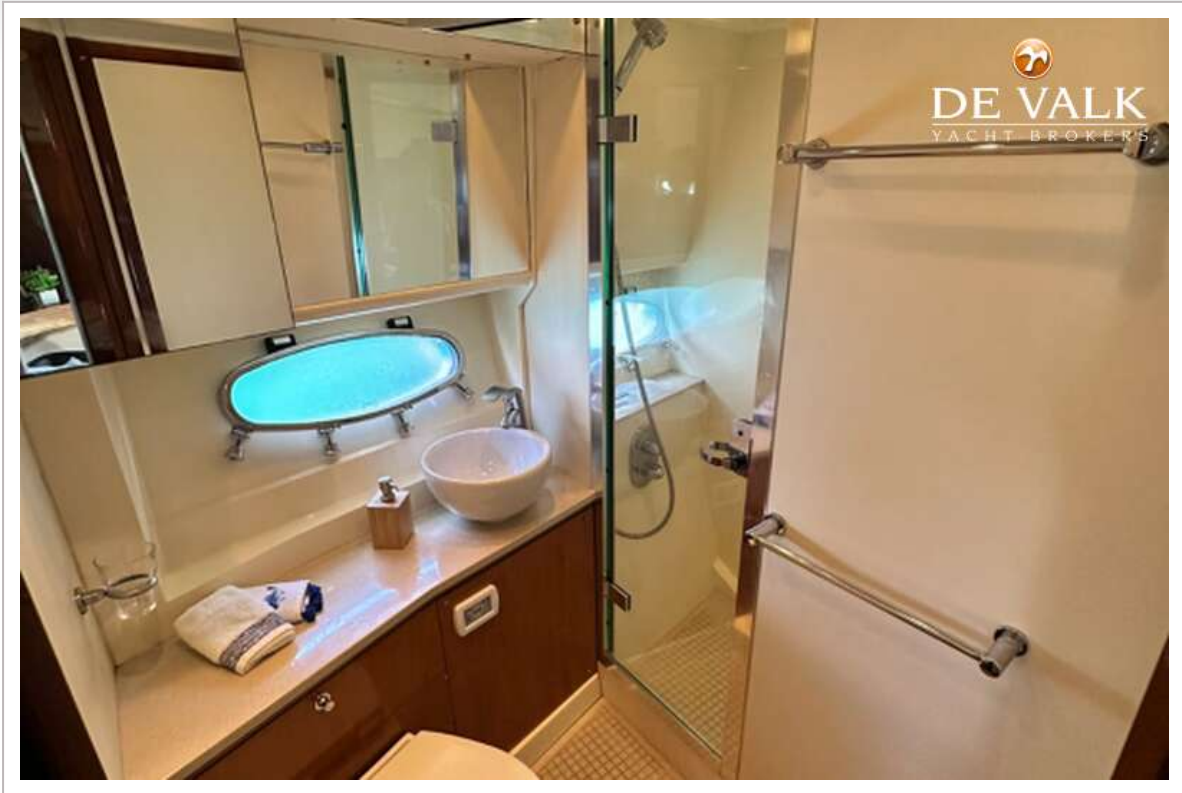
SEALINE T50



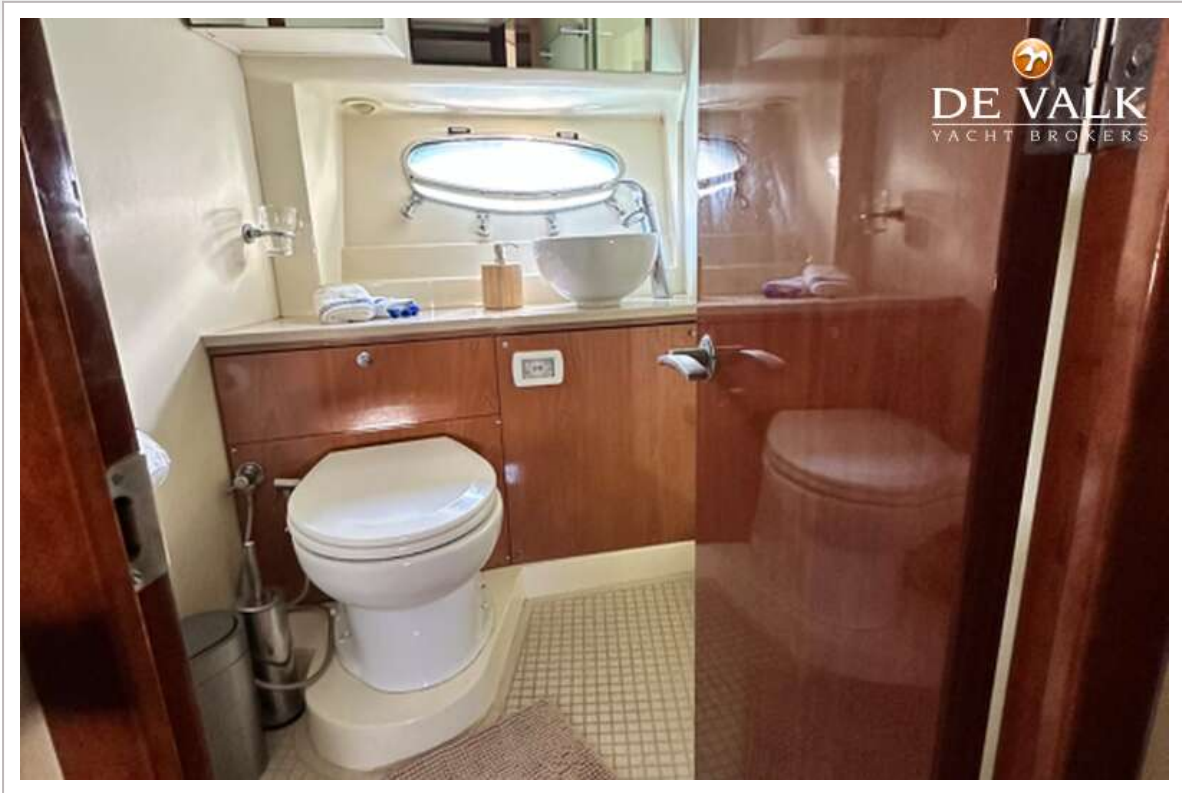
SEALINE T50



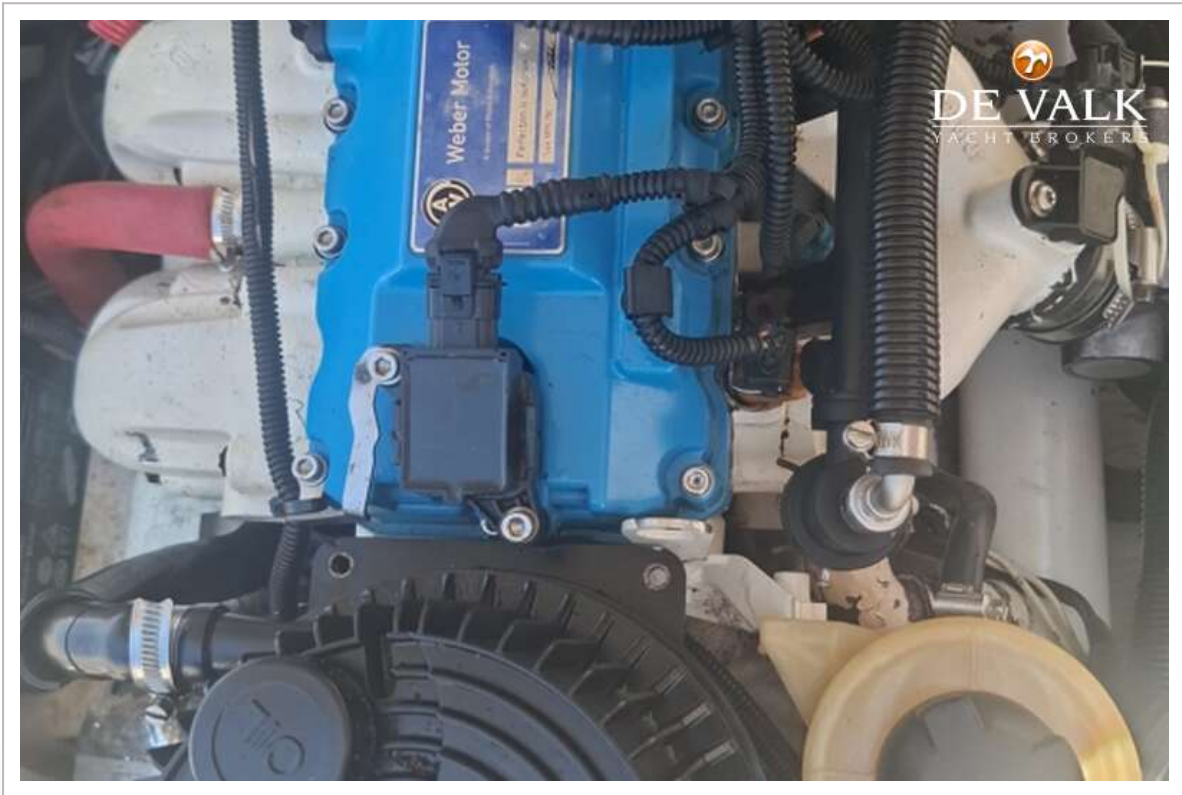
SEALINE T50



SEALINE T50



SEALINE T50



# SEALINE T50

