



## CHEETAH CATAMARAN 10.20

# CHEETAH CATAMARAN 10.20

## KOMMENTARE DES MAKLERS

Cheetah Marine 10.20 "Calactica" launched in 2023 by Post work Boats in The Netherlands. Very complete equipped for varial uses such as: dive operations, support or survey work, ROV operations, crew tender etc. CE and MCA certified. A twin Yamaha F300 outboards with Yamaha helm master system for trim, autopilot and autopositioning. Furtermore a single berth, toilet, galley dinette and two helm seats on a X craft shock mitigation seat. Viewing possible by appointment in The Netherlands.

*Arne Doodeman*

## TECHNISCHE DATEN

<b>Maße</b>	10.20 x 3.70 x 0,50 / 1.00 (m)	<b>Werft</b>	Cheetah marine / Post workboats
<b>Baujahr</b>	2023	<b>Kabinen</b>	1
<b>Material</b>	GFK	<b>Kojen</b>	1
<b>Motor(en)</b>	2 x Yamaha F300NSB petrol	<b>PS/kW</b>	2 x 300.00 (PS), 220.80 (kW)
<b>Angebotspreis</b>	€ 329.000 (MwSt. Nicht bezahlt)	<b>Liegeplatz</b>	contact Monnickendam

## KONTAKT

<b>Verkaufsbüro</b>	De Valk Monnickendam B.V.	<b>Telefon</b>	+31 (0)299 65 63 50
<b>Adresse</b>	Hoogedijk 6 1145 PM Katwoude NL	<b>E-Mail</b>	monnickendam@devalk.nl

## HAFTUNGS AUSSCHLUSS

Diese Angaben erfolgen nach bestem Wissen, können jedoch nicht garantiert werden.



# CHEETAH CATAMARAN 10.20

## ALLGEMEIN

<b>Modell</b>	CHEETAH CATAMARAN 10.20
<b>Typ</b>	Motoryacht
<b>Rumpflänge (m)</b>	10,20
<b>Breite (m)</b>	3,70
<b>Tiefgang (m)</b>	1,00
<b>Tiefgang min (m)</b>	0,50
<b>Durchfahrtsöhe min (m)</b>	2,65
<b>Baujahr</b>	2023
<b>Werft</b>	Cheetah marine / Post workboats
<b>Land</b>	Vereinigtes Königreich
<b>Entwerfer</b>	Sean Strevens
<b>Gewicht (t)</b>	5
<b>CE Norm</b>	B
<b>Rumpfmateral</b>	GFK
<b>Rumpffarbe</b>	Blau
<b>Rumpfform</b>	Catamaran
<b>Material Aufbauten</b>	GFK
<b>Stossliste</b>	Gummi
<b>Deckmaterial</b>	GFK
<b>Deck Finish</b>	Antirutsch Belag
<b>Pflicht Bedeckung</b>	Antirutsch Farbe
<b>Antifouling (Jahr)</b>	2025
<b>Fenster Einfassung</b>	Aluminium
<b>Fenster Material</b>	Sicherheitsglas
<b>Decksluke</b>	ja
<b>Radar Träger</b>	klappbar
<b>Treibstofftank (Liter)</b>	Approx. 600 litre
<b>Füllstandsanzeige (Treibstofftank)</b>	Via the Yamaha digital screen
<b>Trinkwassertank (Liter)</b>	ja
<b>Füllstandsanzeige (Trinkwasser)</b>	KUS freshwater level indicator



# CHEETAH CATAMARAN 10.20

<b>Fäkaelien Tank (Liter)</b>	ja
<b>Radsteuerung</b>	hydraulik   and Yamaha joystick system
<b>Aussen Steuerung</b>	Docking station in de cockpit with Yamaha helm master joystick
<b>Weitere Info</b>	MCA certified

## UNTERKUNFT

<b>Kabinen</b>	1
<b>Kojen</b>	1
<b>Fussboden</b>	Holzabdruck
<b>Offenen Cockpit</b>	ja
<b>Salon</b>	ja
<b>Heizung</b>	Diesel Heißluft Eberspacher
<b>Dinette</b>	ja
<b>Tür zum Cockpit</b>	ja
<b>Kombüse</b>	ja
<b>Arbeitsfläche</b>	ja
<b>Spülbecken</b>	Edelstahl   Single stainless steel sink
<b>Herd</b>	Induktion   Steba single burner Induction stove
<b>Mikrowelle</b>	Caso design M20 ecostyle
<b>Kuhlschrank</b>	Dometic
<b>Wasserdruck System</b>	elektrisch
<b>Eignerkabine</b>	Einzelbett
<b>Toilet</b>	Jabsco manual toilet
<b>Toilette System</b>	handbetrieb

## MASCHINEN

<b>Motoranzahl</b>	2
<b>Marke</b>	Yamaha
<b>Typ</b>	F300NSB
<b>PS</b>	300
<b>kW</b>	220.80



# CHEETAH CATAMARAN 10.20

<b>Kraftstoffart</b>	Benzin
<b>Höchstgeschwindigkeit (Kn)</b>	43
<b>Marschgeschwindigkeit (Kn)</b>	25
<b>Antrieb</b>	Außenbord
<b>Motor bedienung</b>	elektrisch Yamaha engine controls
<b>Elektrische Bilgenpumpe</b>	ja
<b>Generator</b>	Hyundai 3.2kw portable generator
<b>Starterbatterie</b>	2 x Optima Redtop 50ah
<b>Versorgungsbatterie</b>	1 x Victron 220 ah
<b>Batterie Monitor</b>	Victron Color monitor, Victron BMV monitor
<b>Batterie Ladegerat</b>	Victron Bluesmart charger 12/15-3, 2x Victron Orion-TR Smart 12 12-18 isolated DC/DC charger
<b>Batterie Ladegerat/Umwandler</b>	Victron Quattro 12/3000/120
<b>Solar panele</b>	Solar panel with Victron charge controller MPPT 100/30
<b>Landstrom</b>	mit Kabel
<b>Automatischen Positionssystem</b>	Yamaha Helm master
<b>Trimklappen</b>	Yamaha Helm master controls the trim of the outboard engines

## NAVIGATION

<b>Kompass</b>	Allpa liquid compass
<b>Tiefenanziege</b>	ja
<b>3d echoloth</b>	ja
<b>Logge</b>	ja
<b>UKW</b>	2x Icom VHF marine IC-M510
<b>Autopilot</b>	Yamaha Helm master
<b>Radar</b>	Navico Broadband 4G radar
<b>Radar/GPS/Plotter</b>	2 x Lowrance HDS12
<b>PC Computer</b>	ja
<b>WIFI Antenne</b>	Router with outside antenna for internet on board
<b>AIS Transponder</b>	AIS class B transponder integrated in the system
<b>Radio Empfänger</b>	Uniden Tunk Tracker UBC 780 XLT



<b>Kamera</b>	Several camera's with live video connection
<b>Navigation Beleuchtung</b>	ja
<b>Sprech-vorrichtung</b>	Standard Horizon loud haler VLH-3000A
<b>Weitere Info</b>	Echomax radar reflector
<b>Weitere Info</b>	Deck lights and bow light

## AUSRÜSTUNG

<b>Badeleiter</b>	Edelstahl On port side
<b>Anker</b>	ja
<b>Ankerkette</b>	300 meter, 16mm Tipto 8 towline
<b>Ankerwinde</b>	elektrisch
<b>Deckwasche</b>	ja
<b>Zupackenschiene (aufbauten)</b>	Edelstahl
<b>Seiten-Einstieg Seereling</b>	On portside is a door in the side
<b>Heckkorb</b>	ja
<b>Rettungsboje</b>	ja
<b>Scheibenwischer</b>	TMG wiper control with 3 pantograph wipers
<b>Rahmen heizung</b>	Window heating on the front window
<b>Horn</b>	ja
<b>Radar Reflektor</b>	ja
<b>Fenderkissen</b>	ja
<b>Festmacher</b>	ja
<b>Radio</b>	Fusion
<b>Feuerloscher</b>	ja
<b>Weitere Info</b>	4 x 2T towing points   Bollard pull 1500 KG
<b>Weitere Info</b>	Transport cradle available



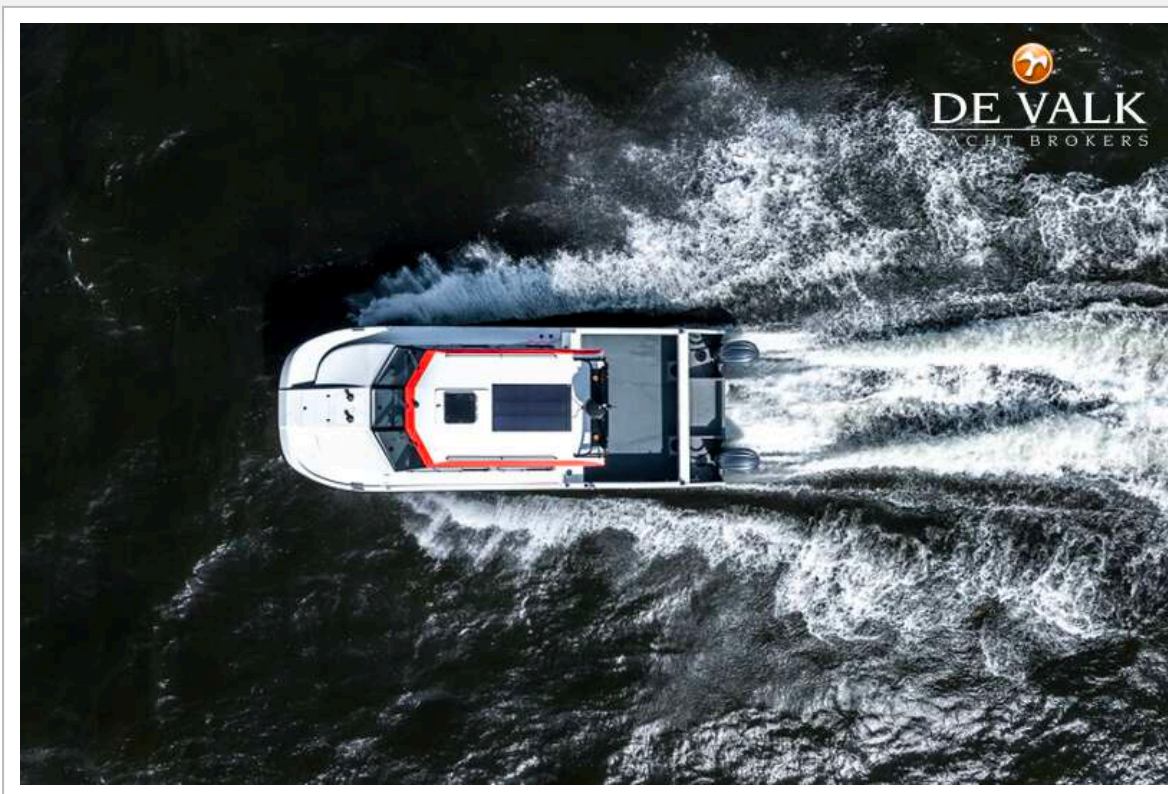
# CHEETAH CATAMARAN 10.20



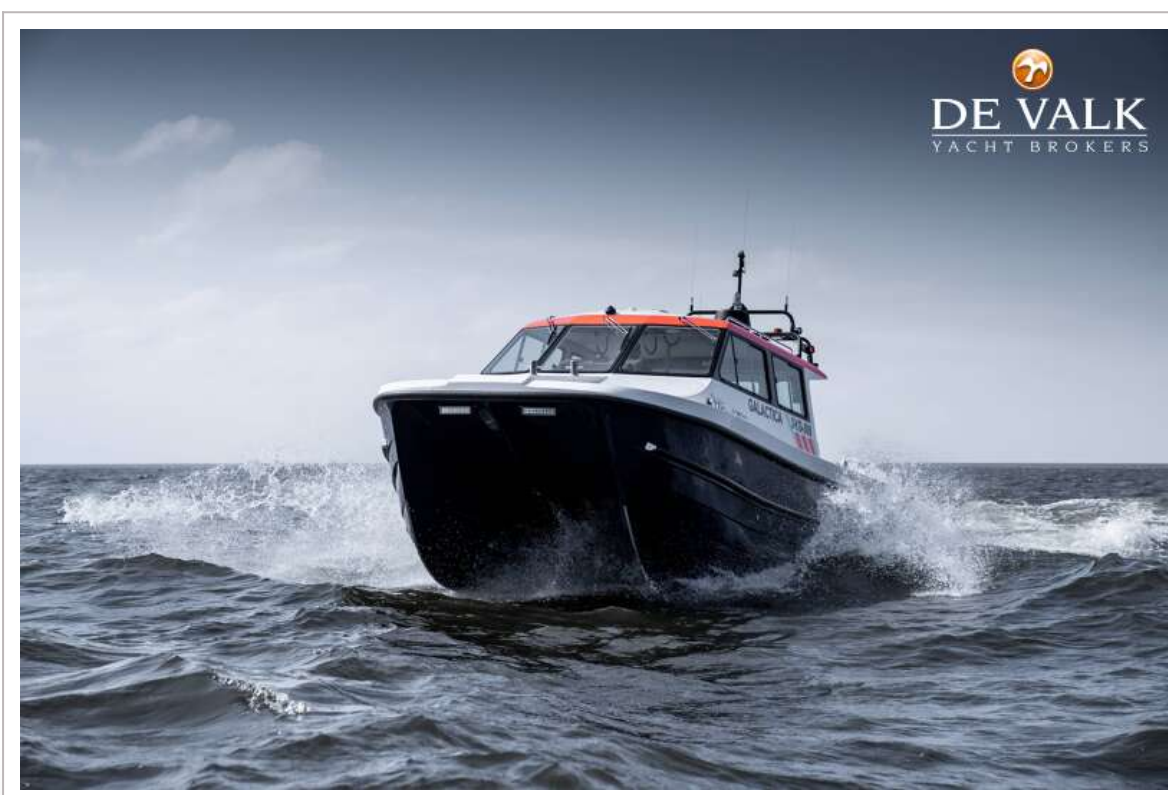
# CHEETAH CATAMARAN 10.20



# CHEETAH CATAMARAN 10.20



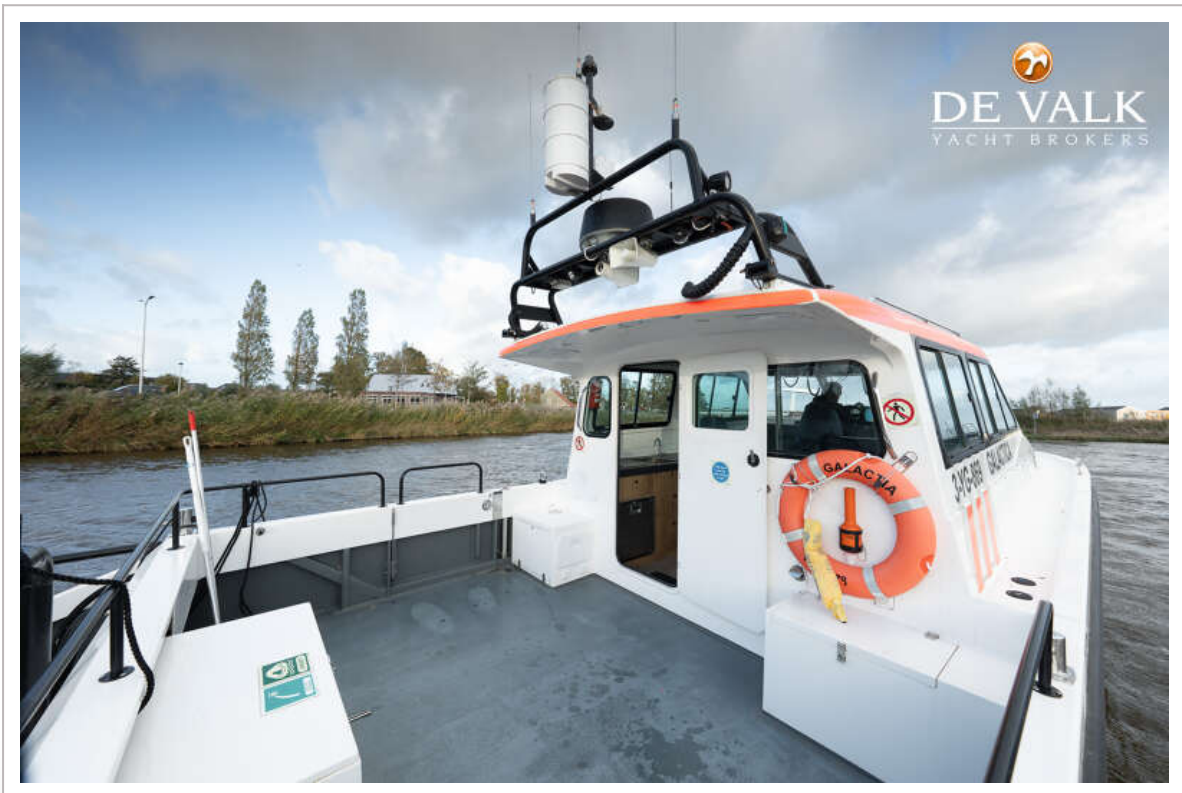
# CHEETAH CATAMARAN 10.20



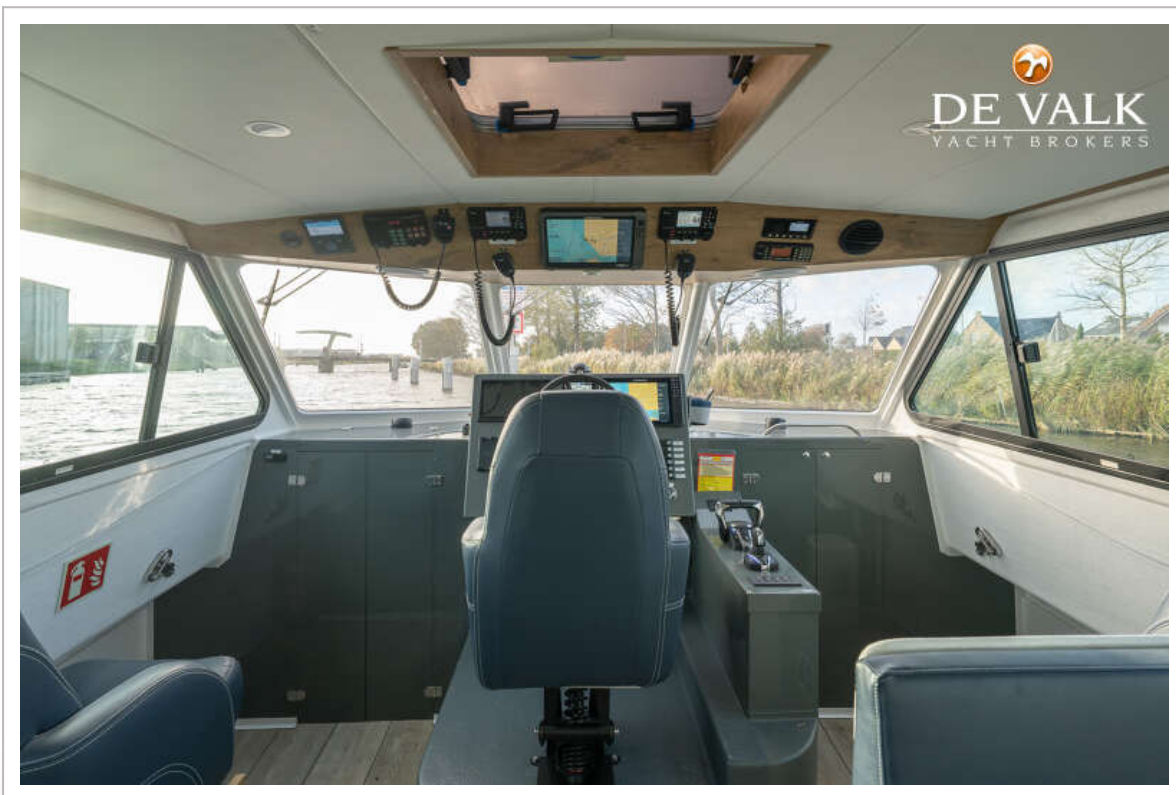
# CHEETAH CATAMARAN 10.20



# CHEETAH CATAMARAN 10.20



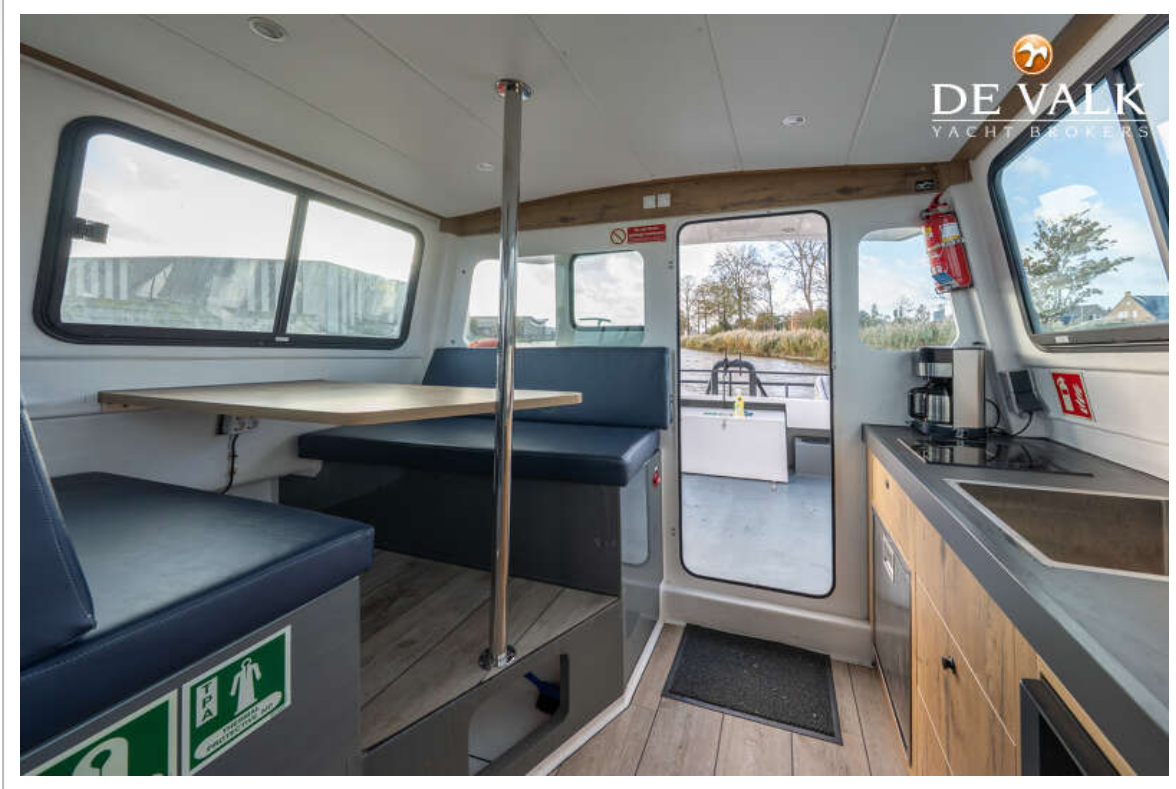
# CHEETAH CATAMARAN 10.20



# CHEETAH CATAMARAN 10.20



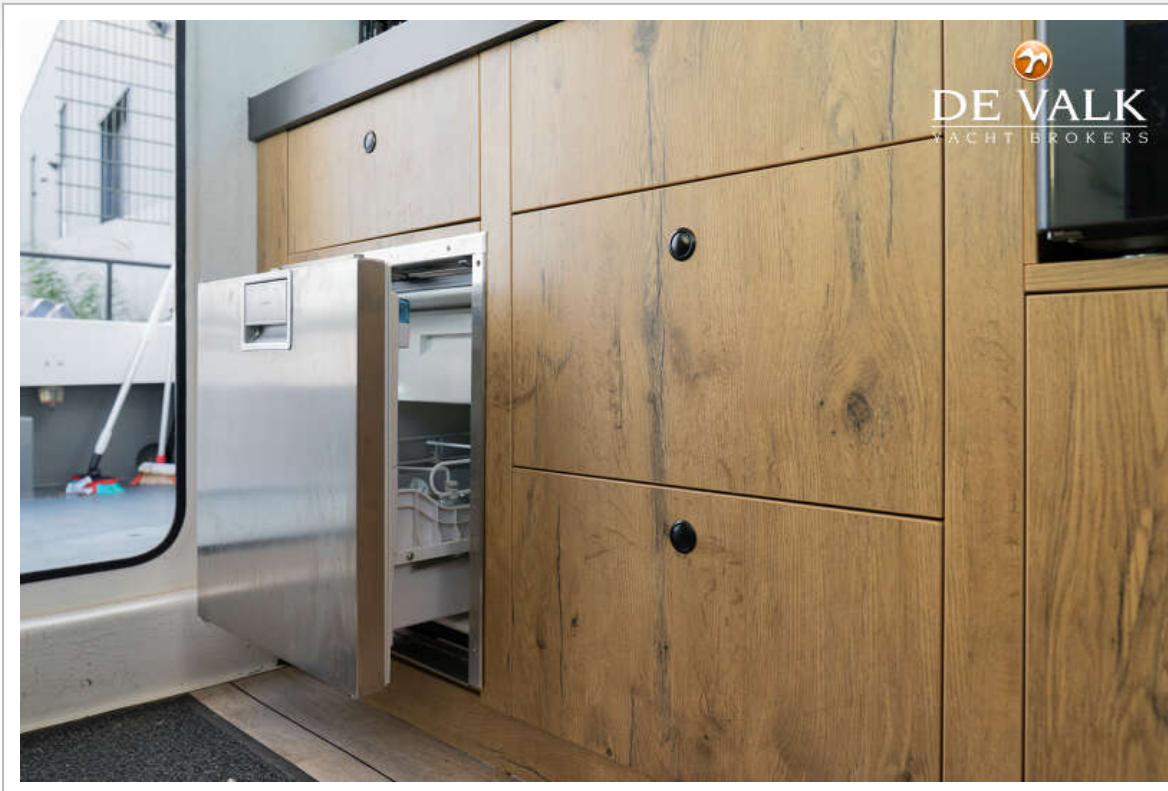
# CHEETAH CATAMARAN 10.20



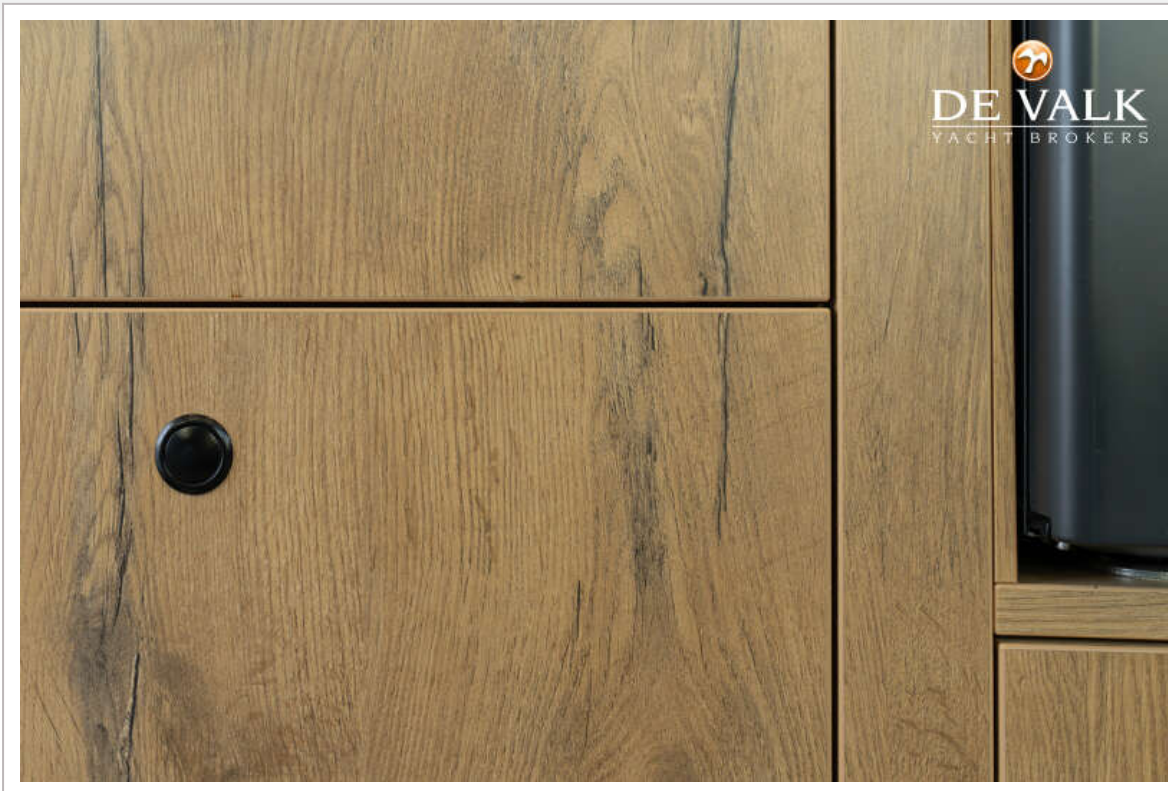
# CHEETAH CATAMARAN 10.20



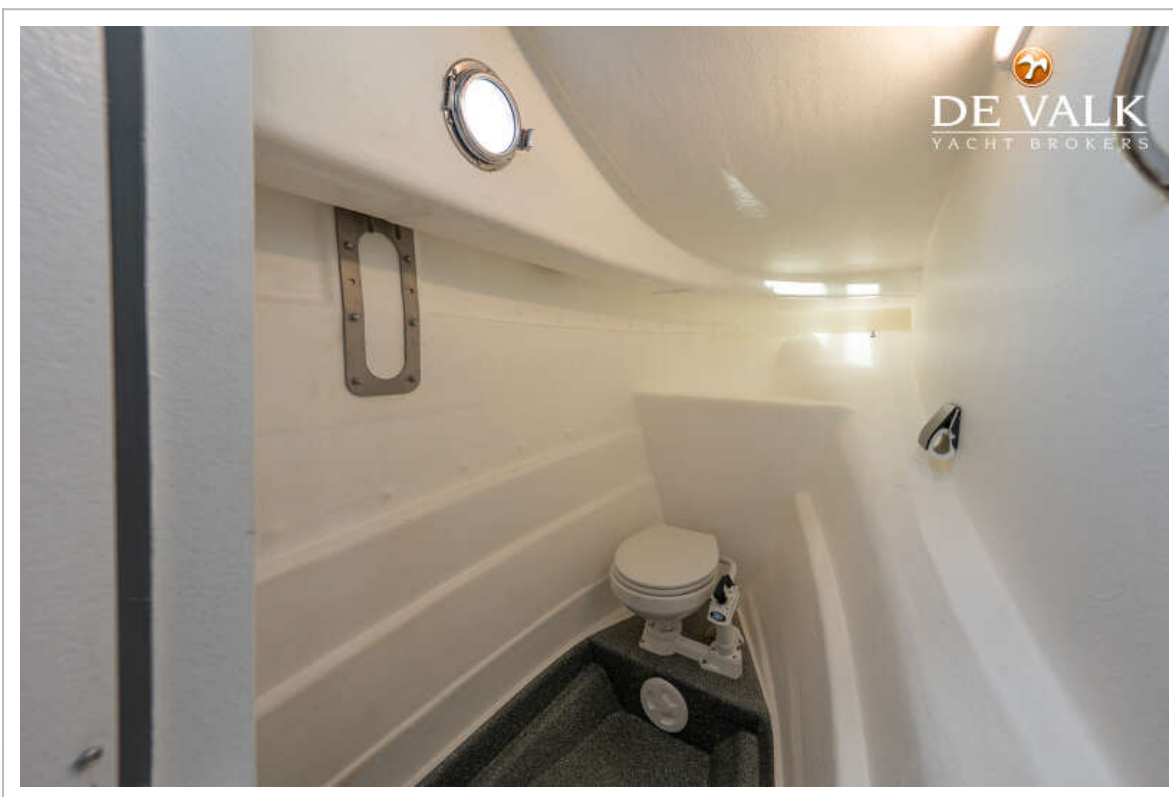
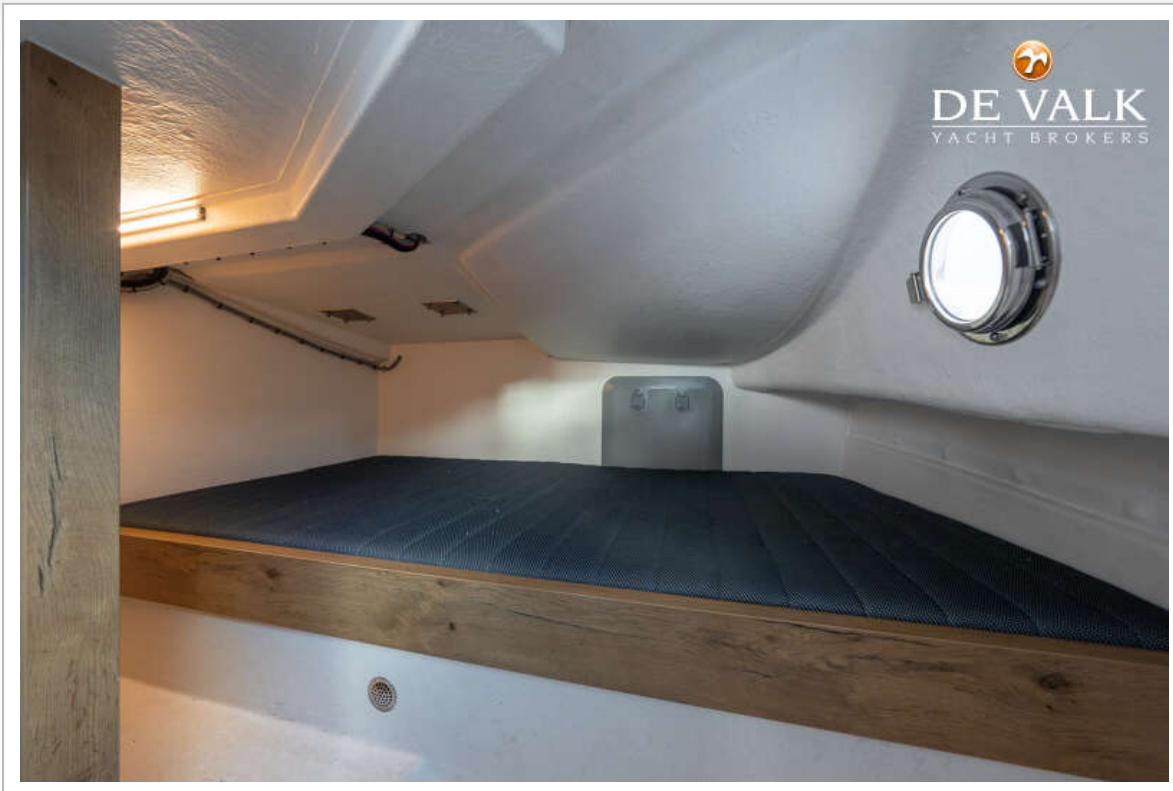
# CHEETAH CATAMARAN 10.20



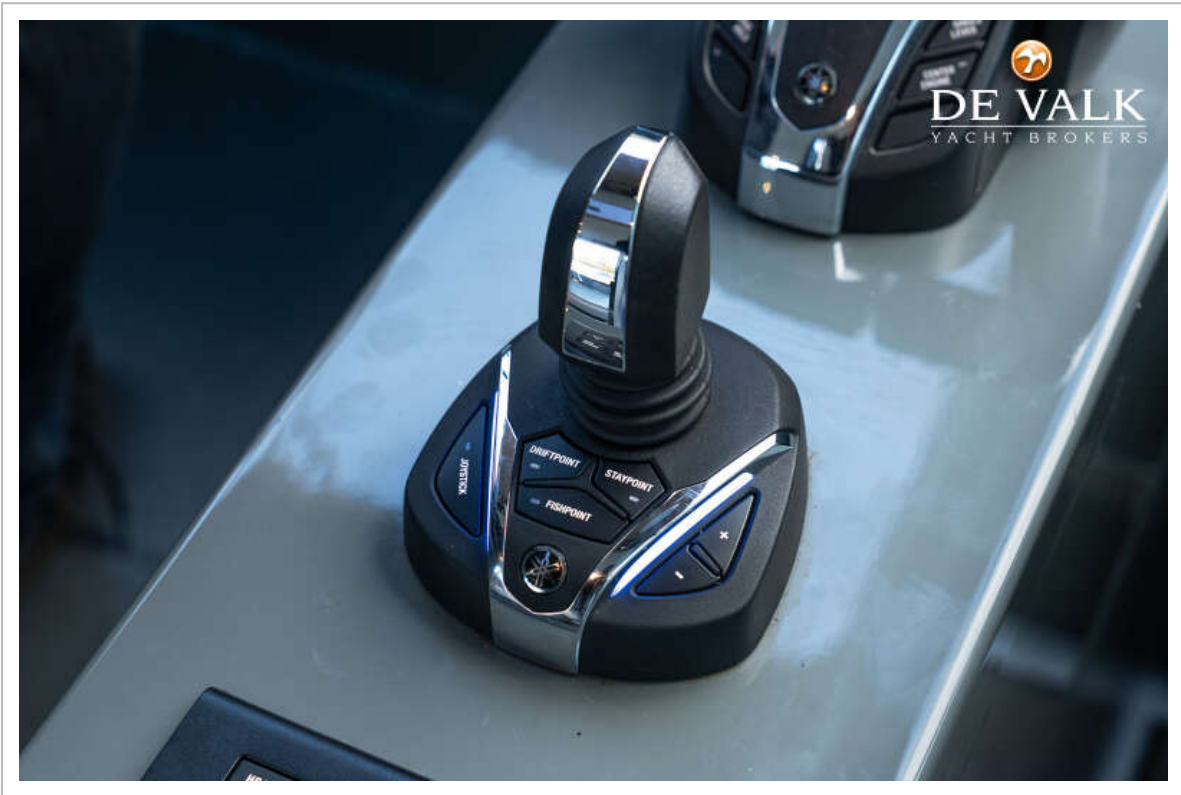
# CHEETAH CATAMARAN 10.20



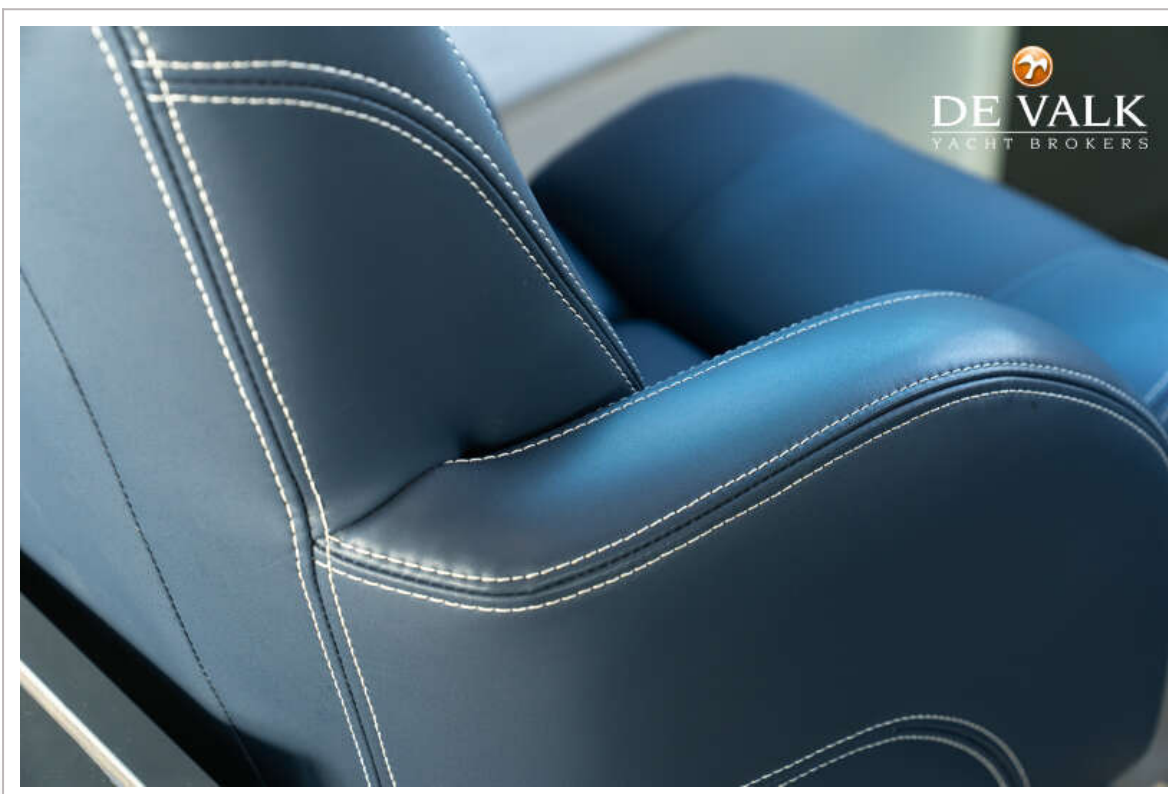
# CHEETAH CATAMARAN 10.20



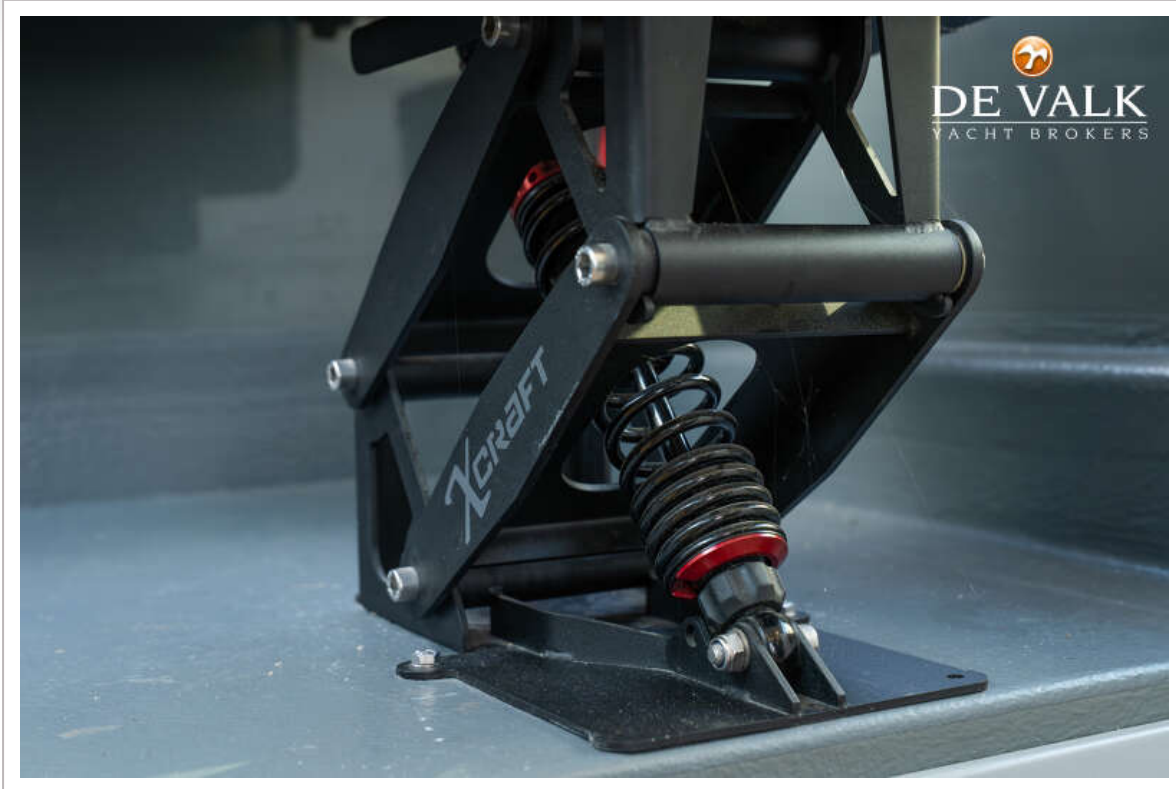
# CHEETAH CATAMARAN 10.20



# CHEETAH CATAMARAN 10.20



# CHEETAH CATAMARAN 10.20



# CHEETAH CATAMARAN 10.20

