



DE VALK
YACHT BROKERS



WAUQUIEZ CENTURION 49



DE VALK
YACHT BROKERS

KOMMENTARE DES MAKLERS

This impressive Centurion 49 was designed by Edward Dubois and hand built in fiberglass by the highly reputable Wauquiez yard in France. She was constructed with strong internal framing and longitudinal reinforcements designed for comfortable long-distance sailing. She is a true performance blue water cruiser superbly equipped with extensive upgrades (all documented) and a huge inventory. The current owner purchased her in 2009 and she is now ready to take her next owners on their next adventure.

Zoë Ann Clark

TECHNISCHE DATEN

Maße	15.43 x 4.47 x 2.20 (m)	Werft	Wauquiez
Baujahr	1991	Kabinen	3
Material	GFK	Kojen	6
Motor(en)	1 x Yanmar 4JH2-HTE diesel	PS/kW	76.00 (PS), 55.94 (kW)
Angebotspreis	€ 99.000 (MwSt. Nicht bezahlt)	Liegeplatz	beim Verkaufsbüro

KONTAKT

Verkaufsbüro	De Valk Almeria	Telefon	+34 950 497 825
Adresse	Puerto Deportivo, Darsena de la Batea 42 04711 Almerimar ES	E-Mail	almeria@devalk.nl

HAFTUNGSAUSSCHLUSS

Diese Angaben erfolgen nach bestem Wissen, können jedoch nicht garantiert werden.



WAUQUIEZ CENTURION 49

ALLGEMEIN

Modell	WAUQUIEZ CENTURION 49
Typ	Segelyacht
Rumpflänge (m)	15,43
Wasserlinienlänge (m)	12,26
Breite (m)	4,47
Tiefgang (m)	2,20
Durchfahrtshöhe (m)	22,00
Stehhöhe (m)	1,88
Baujahr	1991
Werft	Wauquiez
Land	Frankreich
Entwerfer	Ed Dubois/Dubois architects
Gewicht (t)	19
CE Norm	NA
Rumpfmateriale	GFK
Rumpffarbe	Weiß
Haut-dicke Rumpf (mm)	>25mm
Rumpfform	V-shaped hull
Art Kiel	Flossen Kiel
Deckmaterial	GFK Sandwich
Deck Finish	Teak
Deck Finish Aufbauten	Antirutsch Farbe Awlgrip
Pflicht Bedeckung	Teak-seats new 2012, teak floor, gelcoat finished FRP structure
Antifouling (Jahr)	Micron 99 (2024)
Dorado Belufter	6
Fenster Einfassung	Aluminium
Fenster Material	Perspex
Decks Luke	Goiot acrylic
Radar Träger	nicht klappbar Large Stainless Steel arch at stern Radar/Navcom/Solar
Treibstofftank (Liter)	Edelstahl 312



Füllstandsanzeige (Treibstofftank)	Gauge at helm using Moeller reed relay sensor for reliability
Trinkwassertank (Liter)	Edelstahl 4 x 150
Füllstandsanzeige (Trinkwasser)	Gauge at helm using Moeller reed relay sensor for reliability
Fäkaelien Tank (Liter)	Epoxy 140
Fäkaelien Tankablauf	Dip Tube and diaphragm pump overboard or deck fitting
Radsteuerung	Kabelsteuerung
Innerhalb Steuerung	Second A/P control at Nav station
Aussen Steuerung	Kabelsteuerung
Not-Pinne	ja
Weitere Info Farbe und Anstrich	Hull topsides, and also cabin deck area painted in 2014
Weitere Info	Custom Keel with shallower draft 2.2m

UNTERKUNFT

Kabinen	3
Kojen	6
Mannschaftskabine	Forward berth converted to utility / forward sail locker area
Fussboden	Teak/Holley Plywood 12mm approx.
feste Spritzschutz	Hard Dodger top with soft panels
Salon	Large Table and ample seating on staboard side
Standhöhe Salon (m)	1.88
Heizung	Webasto DWB2010 hydronic heater, thermostat each cabin.
Klima Anlage	Reverse Cycle 16,000 BTU Dometic AC and heat
Navigation Zenter	Nav Station wth instruments and chart table desk
Kartentisch	72cmx115cm Nav station with storage for charts below hinged desk
Achterkabine	Two guest per aft cabin or ample room for one.
Umbaubar Koje	The Salon table can drop to create additional sleeping place for
Kombüse	Linear Galley across from Saloon table, behind Nav Station
Arbeitsfläche	Ceramic countertop with refrigeration and freezer hatches
Spülbecken	Edelstahl
Herd	Princess three burner propane stove, original



Mikrowelle	ja
Kuhlschrank	Two refrigerators: one drawer fridge and one hatch style fridge
Gefrier Truhe	1 hatch style freezer, plus 1 portable needs recharge
Warmwasser System	Isotemp stainless
Eignerkabine	ja
Länge Bett (m)	2.03
Kleiderschrank	Hanging Closet, 2 large drawers under bed, and 3 small drawers
Badezimmer	en suite
Toilet	en suite Raritan
Toilette System	handbetrieb Drains to lift pump
Handwaschbecken	im Badezimmer Stainless Basin (upgrade) in forward head with hot/cold water.
Dusche	en suite Hot and Cold water with temperature controlled thermostatic valv
Weitere Info	Make up settee / desk for dressing
Gästekabine 1	ja
Länge Bett (m)	2.01
Kleiderschrank	Converted to drawer refrigerator
Badezimmer	gemeinsam
Toilette	gemeinsam
Toilette System	elektrisch Marine Excellence Raritan macerating toilet
Handwaschbecken	auf der Toilette Stainless Wash basin with hot/cold water, upgrades from orig
Dusche	gemeinsam Thermostatically controlled hot and cold shower mixer
Weitere Info	Head flooring rebuilt in teak and Holly plywood.
Gästekabine 2	ja
Länge Bett (m)	2.01
Kleiderschrank	Hanging locker 3 small drawers.
Badezimmer	gemeinsam

MASCHINEN



Motoranzahl	1
Marke	Yanmar
Typ	4JH2-HTE
PS	76
kW	55.94
Kraftstoffart	Diesel
Überholung im Jahr	Full top/bottom rebuild in 2023. (Details available)
Höchstgeschwindigkeit (Kn)	8,5
Marschgeschwindigkeit (Kn)	6,5
Verbrauch (l/h)	4,5
Reichweite (nm)	400
Antrieb	Schraubenwelle
Welle Dichtung	Tides Marine Shaft seal,
Motor bedienung	Teleflex Single lever control on wheel pedestal
Gewende getriebe	ZF15 MIV Vee drive (new 2024)
Elektrischen Motor	55kW (76 HP)
Bugschraube	Sidepower SE100/185T s/n #1016291 (new 2010) , APEM 1D15F1500 Jo
Exhaust	Wet Exhaust HDI cast s/s water elbow, Verna-Lift fibreglass muff
Propeller Typ	PYI/ Maxprop EZ model 99420 S/N #19920153 (installed 2020)
Propellerblätter	4 blade
Material Propellerwelle	Aqualloy AQ22 M35 x 82inches Stainless (supplied by General Prop
Propellerwelle schmierung	Water lubricated
Hand Bilgenpumpe	Bosworth diaphragm pump mounted at stern near helm
Elektrische Bilgenpumpe	Primary/Secondary 1500 (More info available)
Bilge Alarm	Loud fire alarm mechanical bell 85dBA 12V
Generator	NextGeneration Power 3.5KW, w/ 1-cylinder 6HP Kubota Diesel engi
Betriebsstunden Generator	<1900
Batterien	House: 5+3 8xVictron AGM 110AH VLRA
Starterbatterie	100AH AGM



Generatorbatterie	70AH AGM
Bugschraubebatterie	Bow Thruster connected to 3 house bankbatteries forward of mast,
Ankerwindebatterie	Windlass connected to same bus system as Bow Thruster
Batterie Monitor	BMV-100 Victron with 500A , interfaced with NMEA2000 bus, Color
Batterie Ladegerat	3 Chargers provide redundancy & can be configured to max charge
Batterie Ladegerat/Umwandler	3kW Victron Multiplus, wired in place. 2kW multiplus to be wired
Wind generator	Silent Wind Generator mounted on aft pole, with MPPT charger
Solar panele	1x 2xSunpower 170W panels mounted on arch 80/20 frame, 1xSunpow
Landstrom	120/230 30Ampere US plug, 60 Hz
Trenn transformator	Victron auto switch 120/240V transformer.
Wasserbereiter	Spectra Ventura 150 12 V (more info available)
Weitere Info	Alternator -Balmar 100A aux alt with Balmar external regulator
Weitere Info	Victron Color Control GX Display to control Multiplus charger
Weitere Info	More details availbale on Power Monitor

NAVIGATION

Kompass	Plath compass (seals changed, rebuilt 2024)
Multi Control Display	3 chart plotters. 1- Garmin 4212 (helm station) 1. Garmin 4212
Tiefenanziege	Airmar transducer NMEA2000
Tiefenanziege/Logge	Airmar transducer NMEA2000
Logge	UST800 Airmar ultrasonic (needs troubleshooting/ repair)
Windlupe anzeige	B&G wireless Masthead WS320 . FOUR Triton multidiplays installed
UKW	1. SIMRAD RS40 (new 2022) at Nav Station with HS40 remote (new
Autopilot	RayMarine S3G controller with Type II autopilot. Spare Autopilo
Ruderwinkel Anzeige	RayMarine autopilot sensor mounted on rudder quadrant with custo
Radar	GMR424 XHD2 Garmin 4ft open array networked on 3 plotters



GPS	B&G ZG-100 GPS Sensor
Elektronische Kart(en)	Mediterranean, US & Canada, Eastern Caribbean (some will expire)
AIS Transceiver	Garmin AIS800 with dedicated GPS receiver (new 2022) MMSI 36742
Epirb	ACR PLB37 with hydrostatic release on aft arch.
Navigation Beleuchtung	Red, Green, Aft, and Tricolor at masthead, Anchor Light, Steamin
Sprech-vorrichtung	Mounted on aft arch / connected to radio, doubles as Fog Horn
Weitere Info	Starlink/ Sat Iridium Go/Maretron multi display/Extra Autopilot
Weitere Info	SSB Radio ICOM M802 with Pactor Modem

AUSRÜSTUNG

Spritzverdek mit Griffbügel	Grab Rails on hard dodger on port, starboard, and aft.
Feste Haube	Hard Dodger, custom made, -acrylic semirigid panels on zippers
Bimini	Bimini on custom stainless mount -recommend new mounting method
Cockpit Polster	Closed Cell foam cushions (new covers 2024)
Cockpit Tisch	Custom teak cockpit table (new 2017)
Badeplattform	Boat has a boarding area at stern for boarding
Badeleiter	Boat has boarding ladder at stern, Stainless with teak steps.
Gangway	Passerelle at stern
Heckdusche	Shower handle and hose inside compartment at stern, cold water
Anker	SPADE 35 kG galvanized anchor (new 2023) with WASI ball mount.
Ankerkette	120 meters Lofrans galvanised chain (new 2023)
Anker 2	Fortress large folding anchor
Ketten Zähler	AA560 Auto Anchor Chain Counter mounted at helm on port side
Extra Anker-Geschirr	Two Mantus 3/8 inch chain hooks for snubber use.
Ankerwinde	MAXWELL 3500 vertical windlass 1.75 tons (new 2022)
Deckwasche	Groco pump type deck wash system with IPS 383 pressure switch
Beiboot	CARIBE SeaRover 290 Hypalon dinghy S/N CN HNB42165E222



Ausserborder	2004? Johnson 15 HP (Serviced 2024) two stroke
Ausserborder Halterung	Welded custom mount part of aft arch and davit system
Davits	Custom heavy duty 0.089 wall thickness stainless steel tubing
Davits bedienung	Manual 4:1 tackle, cam cleats
Zupackenschiene (aufbauten)	Heavy Teak Grab rails, varnished with two part varnish
Heckkorb	Stock pushpit integrated and welded into the overall arch
Bugkorb	Custom pulpit (2013) with step rail on top
Rettungsinsel	Viking 6 person ResC-you offshore raft (new 2020)
Rettungsinsel (Pers)	6 person
Letzte Wartung Rettungsinsel	Inspected by Viking Italy Central facility in 2024
Schwimvesten	Mae West type life preservers
Markierboje	SWITLIK MOM 8-S autoinflating marker (new 2020, needs inspecti
Sicherheitsleine auf Deck	Two Wichard Jacklines onboard, for port and starboard
Leinenschneider	AB Marine Shark Shaft line cutter (new 2020)
Horn	See further information
Fernglas	Fujinon 7x50 binoculars aboard.
Radar Reflektor	ECHOMAX 230 radar reflectoron mast
Fenderkissen	ja
Festmacher	ja
Werkzeug	ja
Alarmsystem	Siren Marine Alarm system. Bilge,voltage,IR intrusion sensors.
TV	TV/ Computer: All in one Samsung ATIV
Radio-CD Spieler	Alpine CDE-SXM145BT Radio /CD player (new 2019)
Lautsprecher im Pflicht	Need replacement
Lautsprecher im Salon	Bose Speakers fore and aaft of the salon starboard side
Uhr - Barometer	Barometer - Wheems and Plath mechanical barometer
Feuerloscher	3x Kidde L635007 15lbs rated ABC, one halon, one kitchen
Letzte Wartung Feuerloscher	Unknown, sold as is.

RIGG



Rig	Sloop with Solent inner forestay, split backstay, single D1
Stehendes Gut	Full replacement 2024
Marke Mast	Sparcraft
Material Mast	Aluminium
Salings	Three foil shaped spreaders, discontinuous rigging
Durchgehende Mast	Mast step on main bulkhead longitudinal
Großsegel-Persenning	Stack Pack (MAC) modified for strenght (zipper end needs stitch)
Latten traveller	STRONG slide track system by Tides Marine
Durchelatted großsegel	Full Batten Quantum Mainsail, 597 sq ft (56m ²), 9 oz, 3 reef pts
Kutter Stag	Solent Stay with roller furling on inner jib
Genua	Quantum sails 120% 9 oz dacron 719 sq ft (67m ²)
Rollreffanlage	Harken MARK III Unit 2.5
Genua-Persenning	UV white Sunbrella on Furling Genoa
A-symmetrischen Spi	Asymetric cruising spinnaker .75 oz in ATN sock system, sheets
Stagesegel	Quantum sails Solent 95% of inner triangle 374 ft ² (35m ²)
Abnehmbare Inner Vorderstag	Permanent roller furler
Trysegel	(three reefs in mainsail)
Sturmfock	Hank On sail, can be modified if desired (Prefer Solent sail)
Reff Vorrichtung	Schaeffer Solent sail furler 3100-44 (Installed 201)
Achterstag Spanner	Harken dual hydraulic pistons for split backstay helm new 2018
Baumniederhohler	hydraulik Navtec boom vang controlled from helm panel (Rebuilt 2014)
Primare Schot Winschen	Harken Barbarossa 66.2
Sekundaire Schot Winschen	Harken Barbarossa 56.2
Fall Winschen	Harken Barbarossa port and starboard at mast
Spi Winschen	Running Backstay Harken Barbarossa 42.2
Reff Wunsch	Genoa Harken Barbarossa 42.3
Multifunktional Winschen	Port and Starboard deck house winches for mainsheet, pole, reefs
Spi-Baum	Spinnaker pole, slide car track with control winch on mast
Isolierte Heckstag	SSB Insulators for backstay replaced 2024 along with rig refit
Weitere Info	Port and Starboard Triple Spinlock stoppers on deckhouse

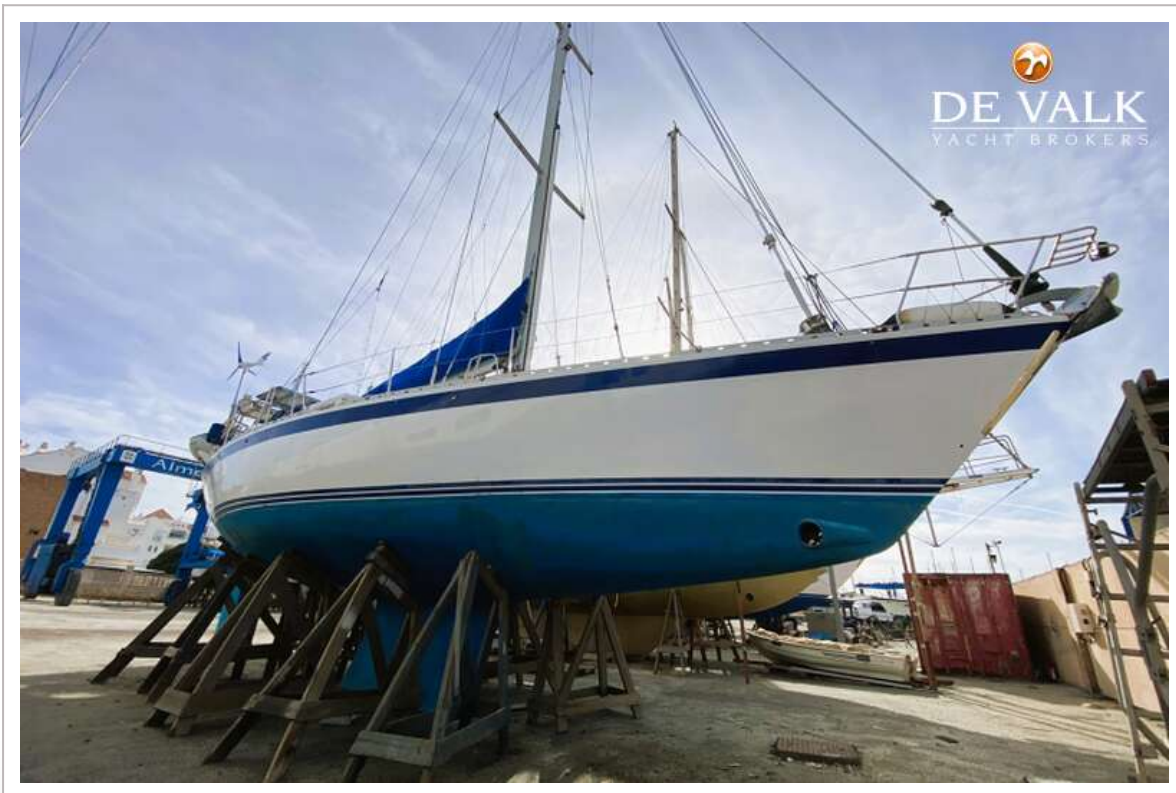


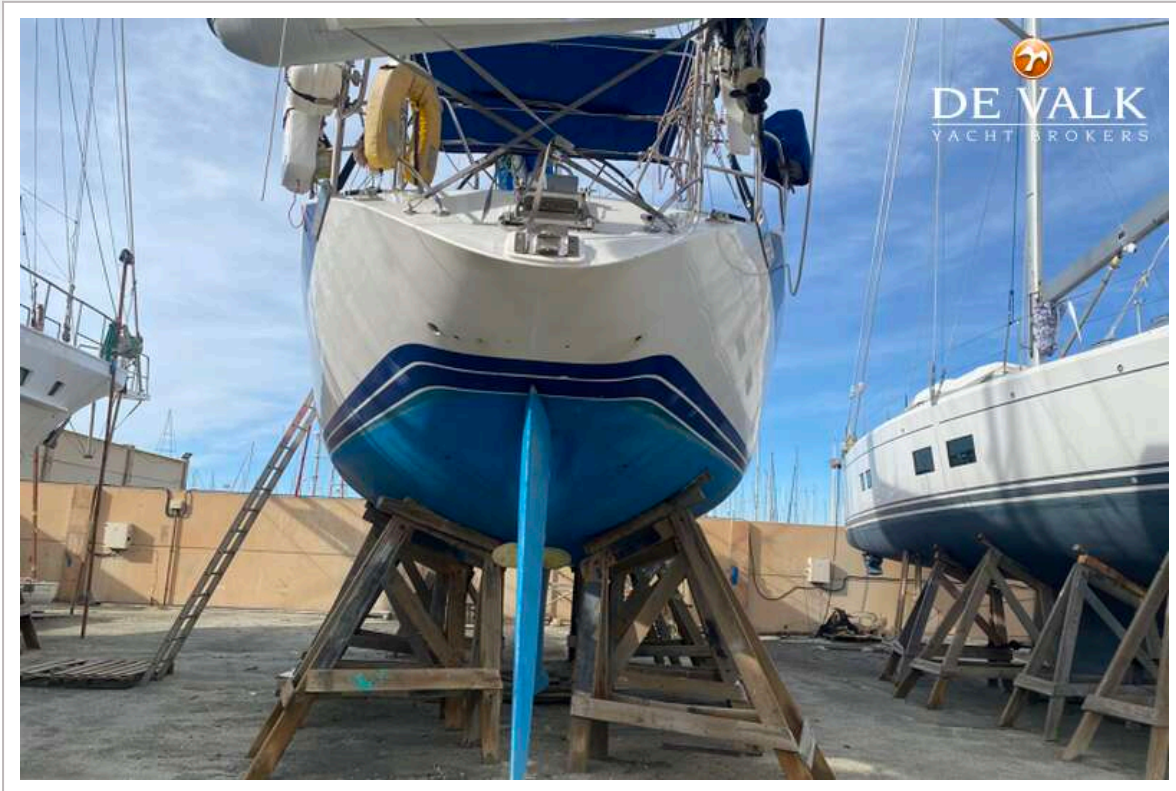
Weitere Info

Port and Starboard custom triple pad eyes on deck house,



WAUQUIEZ CENTURION 49



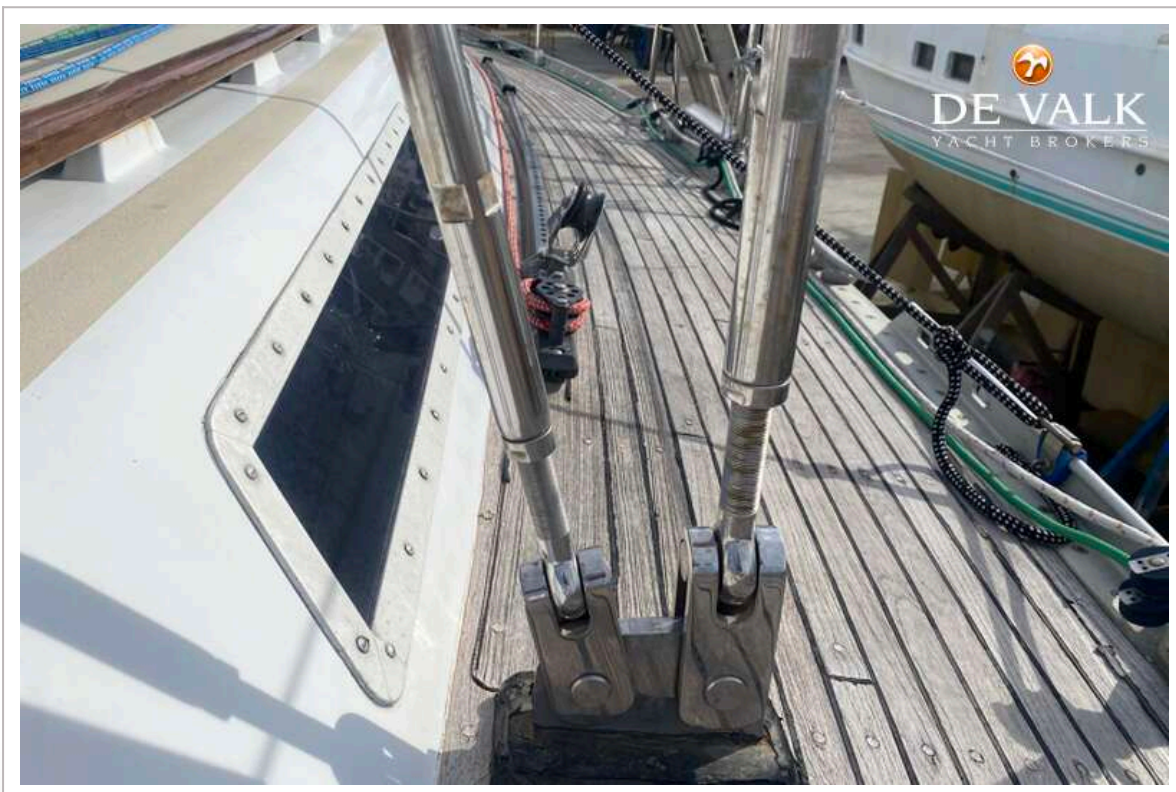
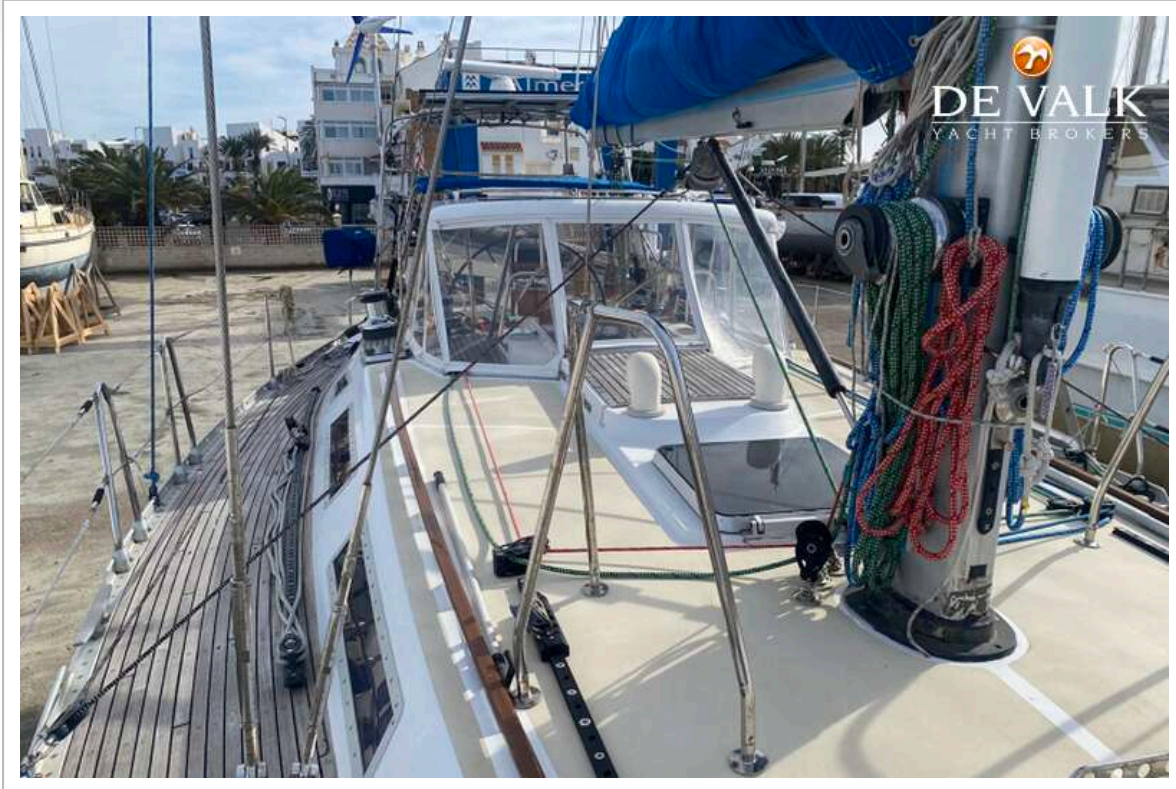




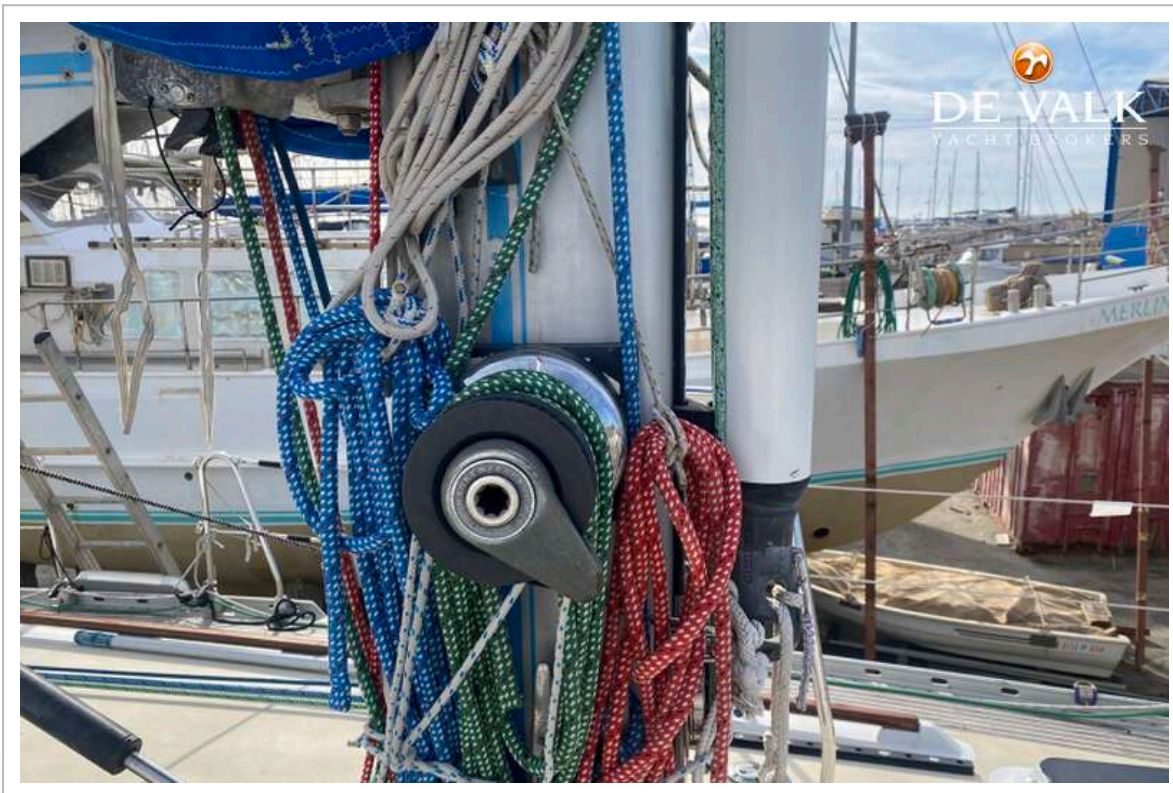
WAUQUIEZ CENTURION 49



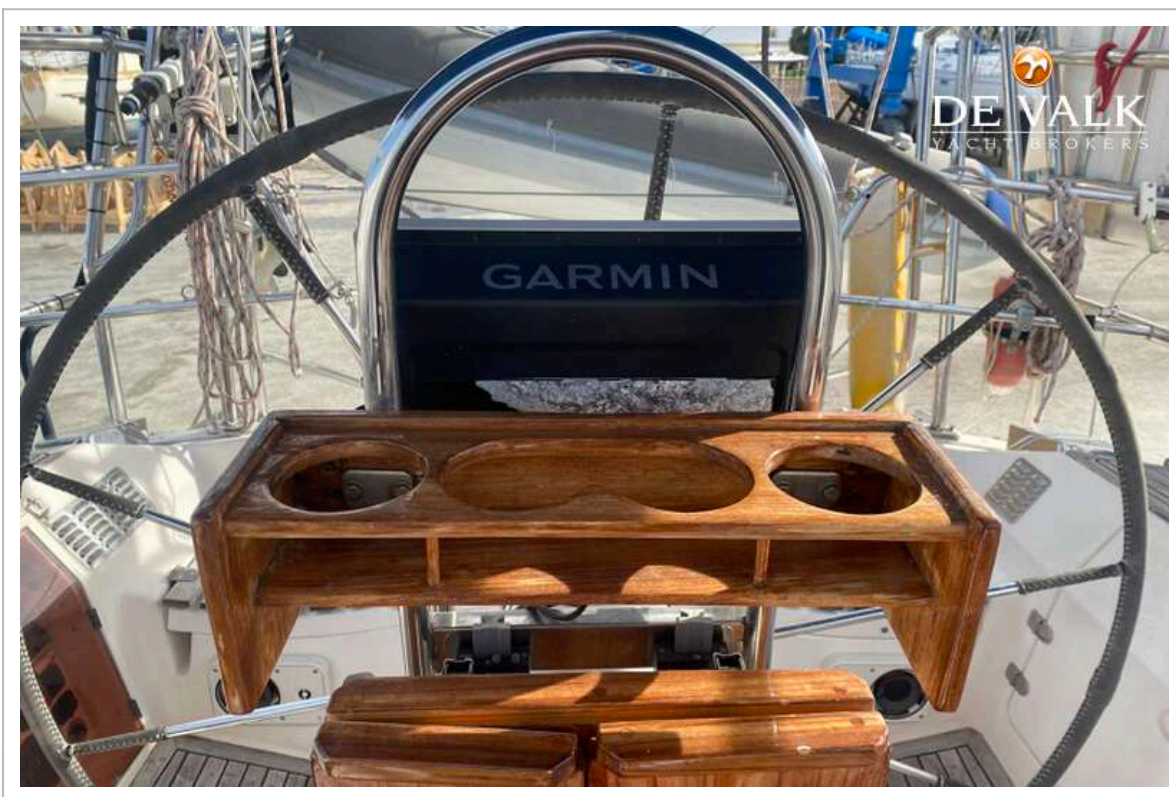
WAUQUIEZ CENTURION 49







WAUQUIEZ CENTURION 49



WAUQUIEZ CENTURION 49





WAUQUIEZ CENTURION 49



WAUQUIEZ CENTURION 49

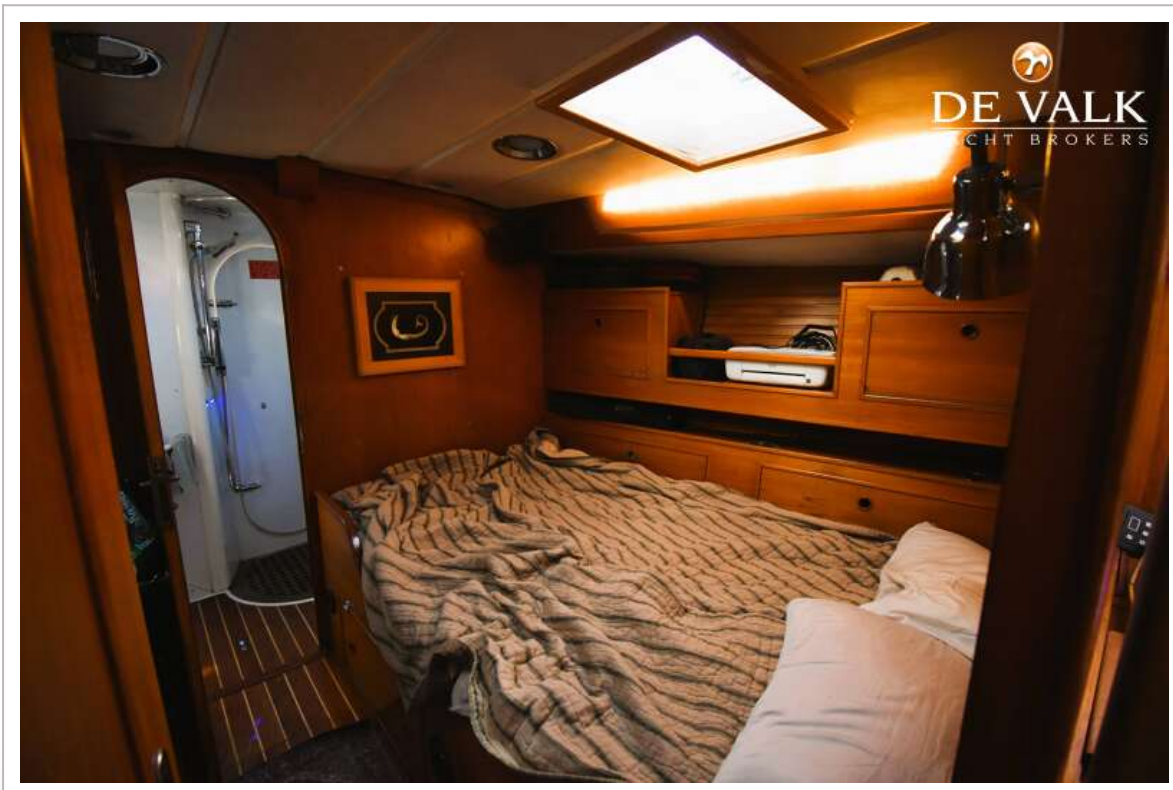




WAUQUIEZ CENTURION 49



WAUQUIEZ CENTURION 49



WAUQUIEZ CENTURION 49

