



DE VALK

YACHT BROKERS



PRESIDENT 37



DE VALK  
YACHT BROKERS

# PRESIDENT 37

## KOMMENTARE DES MAKLERS

President 37 "Themis", built in 1990. Equipped with two Cummins, type: 6 BTA 5.9 diesel engines and a Vetus bowthruster. Saloon with inside helm position, galley and dinette, two cabins and two bathrooms. Recently polished and new antifouling. Flybridge with cushions and a large aftdeck. Viewing is possible in our sales marina in Katwoude.

*Arne Doodeman*

## TECHNISCHE DATEN

|                      |                              |                   |                              |
|----------------------|------------------------------|-------------------|------------------------------|
| <b>Maße</b>          | 11.80 x 3.95 x 1.20 (m)      | <b>Werft</b>      | President Marine Ltd         |
| <b>Baujahr</b>       | 1990                         | <b>Kabinen</b>    | 2                            |
| <b>Material</b>      | GFK                          | <b>Kojen</b>      | 8                            |
| <b>Motor(en)</b>     | 2 x Cummins 6 BTA 5.9 diesel | <b>PS/kW</b>      | 2 x 250.00 (PS), 184.00 (kW) |
| <b>Angebotspreis</b> | € 69.000 (MwSt. Bezahlt)     | <b>Liegeplatz</b> | contact Monnickendam         |

## KONTAKT

|                     |                                       |                |                        |
|---------------------|---------------------------------------|----------------|------------------------|
| <b>Verkaufsbüro</b> | De Valk Monnickendam B.V.             | <b>Telefon</b> | +31 (0)299 65 63 50    |
| <b>Adresse</b>      | Hoogedijk 6<br>1145 PM Katwoude<br>NL | <b>E-Mail</b>  | monnickendam@devalk.nl |

## HAFTUNGS AUSSCHLUSS

Diese Angaben erfolgen nach bestem Wissen, können jedoch nicht garantiert werden.



## ALLGEMEIN

|   |                               |
|---|-------------------------------|
| <b>Modell</b>                             | PRESIDENT 37                  |
| <b>Typ</b>                                | Motoryacht                    |
| <b>Rumpflänge (m)</b>                     | 11,80                         |
| <b>Breite (m)</b>                         | 3,95                          |
| <b>Tiefgang (m)</b>                       | 1,20                          |
| <b>Baujahr</b>                            | 1990                          |
| <b>Werft</b>                              | President Marine Ltd          |
| <b>Land</b>                               | Taiwan                        |
| <b>CE Norm</b>                            | NA                            |
| <b>Rumpfmateral</b>                       | GFK                           |
| <b>Rumpffarbe</b>                         | Weiß                          |
| <b>Rumpfform</b>                          | Deep-V                        |
| <b>Material Aufbauten</b>                 | GFK                           |
| <b>Stossliste</b>                         | Kunststoff                    |
| <b>Deckmaterial</b>                       | GFK                           |
| <b>Deck Finish</b>                        | Antirutsch Belag              |
| <b>Antifouling (Jahr)</b>                 | 03-2026                       |
| <b>Fenster Einfassung</b>                 | Aluminium                     |
| <b>Fenster Material</b>                   | Sicherheitsglas               |
| <b>Decks Luke</b>                         | ja                            |
| <b>Flybridge</b>                          | ja                            |
| <b>Radar Träger</b>                       | nicht klappbar                |
| <b>Treibstofftank (Liter)</b>             | Approx. 1100 litre (2 x 550L) |
| <b>Füllstandsanzeige (Treibstofftank)</b> | VDO                           |
| <b>Trinkwassertank (Liter)</b>            | Approx. 750 litre             |
| <b>Füllstandsanzeige (Trinkwasser)</b>    | VDO                           |
| <b>Fäkaelien Tank (Liter)</b>             | ja                            |
| <b>Radsteuerung</b>                       | hydraulik                     |
| <b>Innerhalb Steuerung</b>                | ja                            |
| <b>Radsteuerung auf Flybridge</b>         | ja                            |



## UNTERKUNFT

|                           |  |
|---------------------------|--|
| Kabinen                   | 2  |
| Kojen                     | 8  |
| Innen                     | Teak   |
| Einteilung                | V-berth in the front, bathroom (washbowl/toilet/handshower), dinette, galley, saloon with helmposition, owners cabin in the stern with private bathroom. |
| Fussboden                 | Holz   |
| Achterdeck                | With hardtop over the aft deck   |
| Salon                     | ja   |
| Heizung                   | 3 x Thomas heating   |
| Dinette                   | ja   |
| Dinette zum umbauen       | Convert into a single berth, including cushion   |
| Schiebetür zum Achterdeck | ja   |
| Kombüse                   | ja   |
| Arbeitsfläche             | ja   |
| Spülbecken                | ja   |
| Herd                      | elektrisch - Bauknecht   |
| Dunstabsauge              | Electrolux   |
| Kuhlschrank               | Coolmatic with freezing compartment  |
| Wasserdruck System        | elektrisch   |
| Eignerkabine              | Französisch Bett   |
| Kleiderschrank            | hängend/Schublad/Regale  |
| Badezimmer                | en suite   |
| Toilet                    | Jabsco   |
| Toilette System           | handbetrieb  |
| Handwaschbecken           | ja   |
| Dusche                    | With out hose   zonder slang   |
| Gästekabine 1             | V-Bett   |
| Kleiderschrank            | ja   |
| Badezimmer                | gemeinsam  |
| Toilette                  | Jabsco   |



|                 |                              |
|-----------------|------------------------------|
| Toilette System | handbetrieb                  |
| Handwaschbecken | ja                           |
| Dusche          | With out hose   zonder slang |

## MASCHINEN

|                           |   |
|---------------------------|---|
| Motoranzahl               | 2   |
| Marke                     | Cummins   |
| Typ                       | 6 BTA 5.9   |
| PS                        | 250   |
| kW                        | 184   |
| Kraftstoffart             | Diesel  |
| Kühlungssystem Motor      | indirekte Wärmetauscher   |
| Antrieb                   | Schraubenwelle  |
| Motor bedienung           | Seilzug Kabel - Morse   |
| Bugschraube               | elektrisch - Vetus  |
| Propellerblätter          | 4 bladed propeller  |
| Material Propellerwelle   | Edelstahl   |
| Propellerwelle schmierung | Wasser  |
| Elektrische Bilgenpumpe   | ja  |
| Generator                 | Westerbeke, not in a working condition  |
| Starterbatterie           | ja  |
| Versorgungsbatterie       | ja  |
| Batterie Ladegerat        | Victron Blue Smart  |
| Umwandler                 | Enrise Sineinverter 12V/2500w   |
| Landstrom                 | mit Kabel   |
| Trimklappen               | Bennett trimtabs ( the trimtabs are working, the led indication lights do not work) |
| Weitere Info              | Racor fuel filter   |

## NAVIGATION

|         |                                       |
|---------|---------------------------------------|
| Kompass | Konus marine compass (liquid compass) |
|---------|---------------------------------------|



|               |                                     |
|---------------|-------------------------------------|
| Tiefenanzeige | Incastec (not in working condition) |
| Logge         | Incastec (not in working condition) |
| UKW           | Shipmate RS8300                     |
| Portabel UKW  | Standard Horizon HX210              |
| Radar         | Furuno                              |
| Plotter/GPS   | Raytheon RC420 chartplotter         |

## AUSRÜSTUNG

|                             |  |
|-----------------------------|--|
| Feste Haube                 | Over the aft deck                      |
| Badeplattform               | ja                                     |
| Badeleiter                  | ja                                     |
| Heck-Tur                    | ja                                     |
| Heckdusche                  | ja                                     |
| Anker                       | Stainless steel anchor                 |
| Ankerkette                  | ja                                     |
| Ankerwinde                  | elektrisch                             |
| See Reling                  | Edelstahl                              |
| Zupackenschiene (aufbauten) | Edelstahl                              |
| Seiten-Einstieg Seereling   | ja                                     |
| Scheibenwischer             | ja                                     |
| Horn                        | ja                                     |
| Fenderkissen                | ja                                     |
| Festmacher                  | ja                                     |
| Radio-CD Spieler            | Sony                                   |
| Uhr - Barometer             | Schatz clock, barometer and hygrometer |



PRESIDENT 37



# PRESIDENT 37



PRESIDENT 37



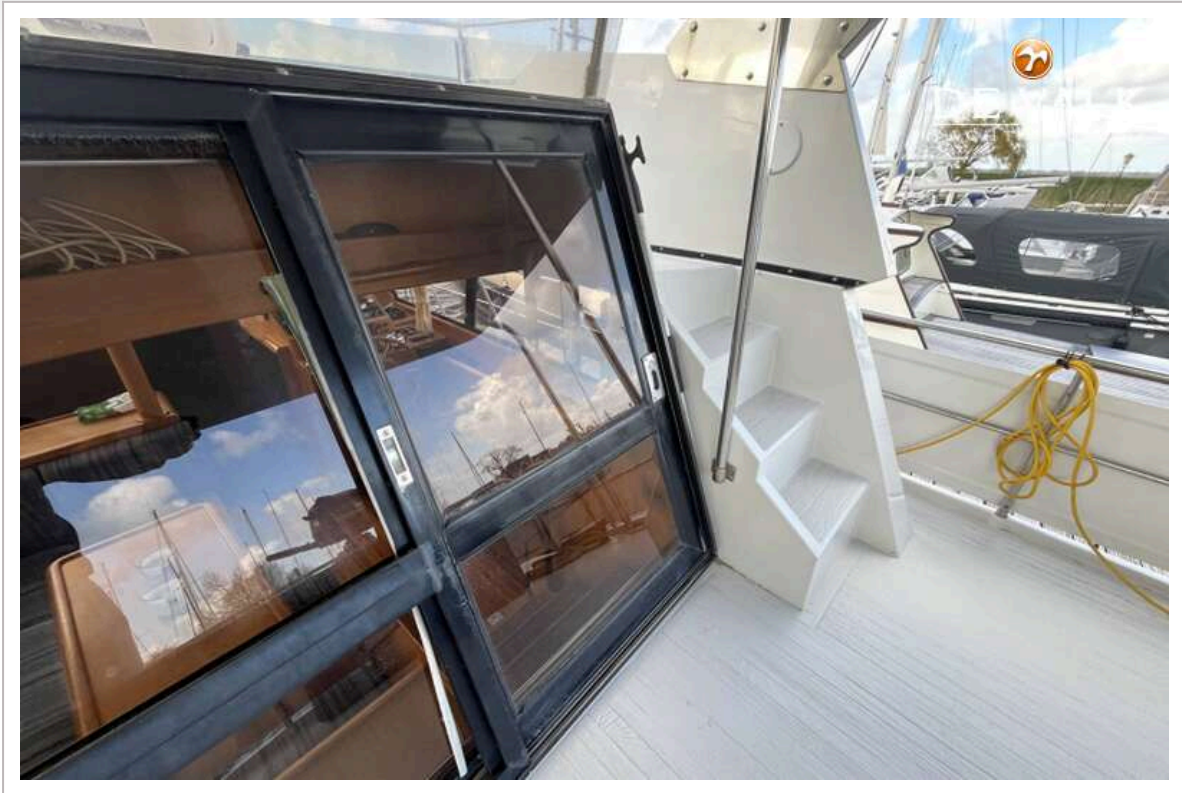
PRESIDENT 37



# PRESIDENT 37



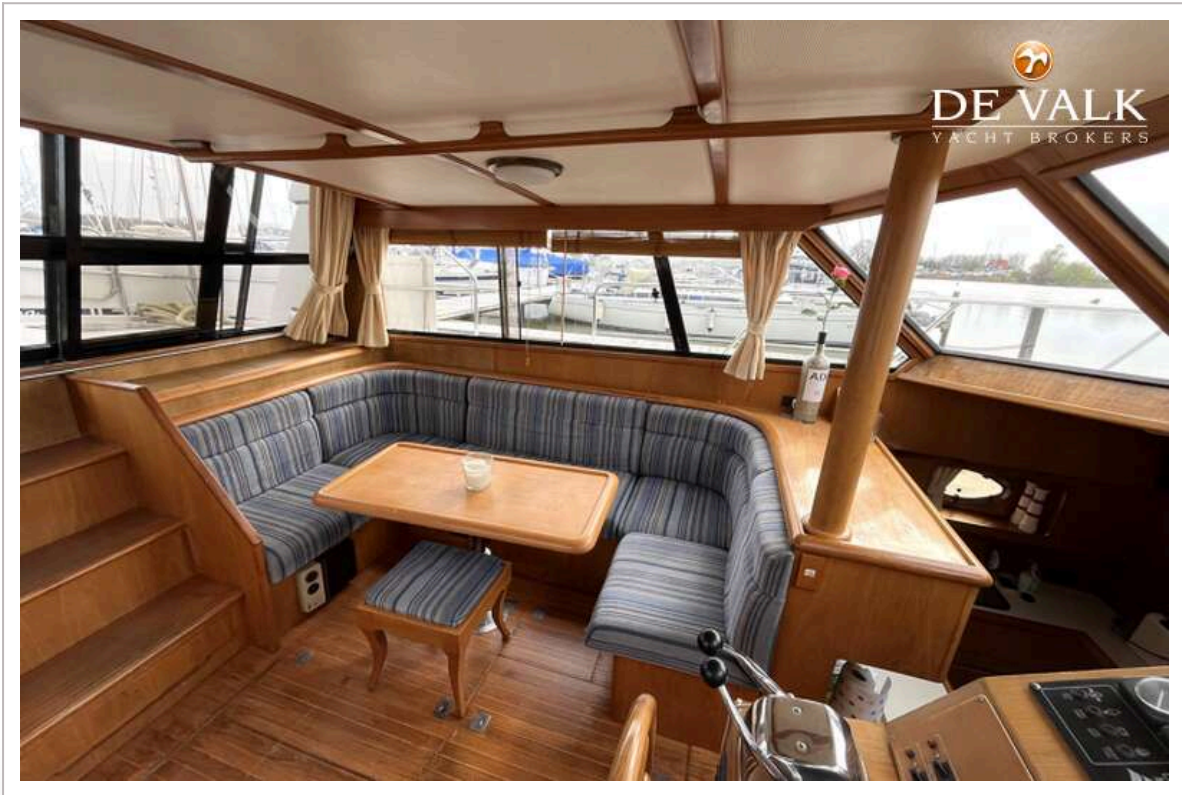
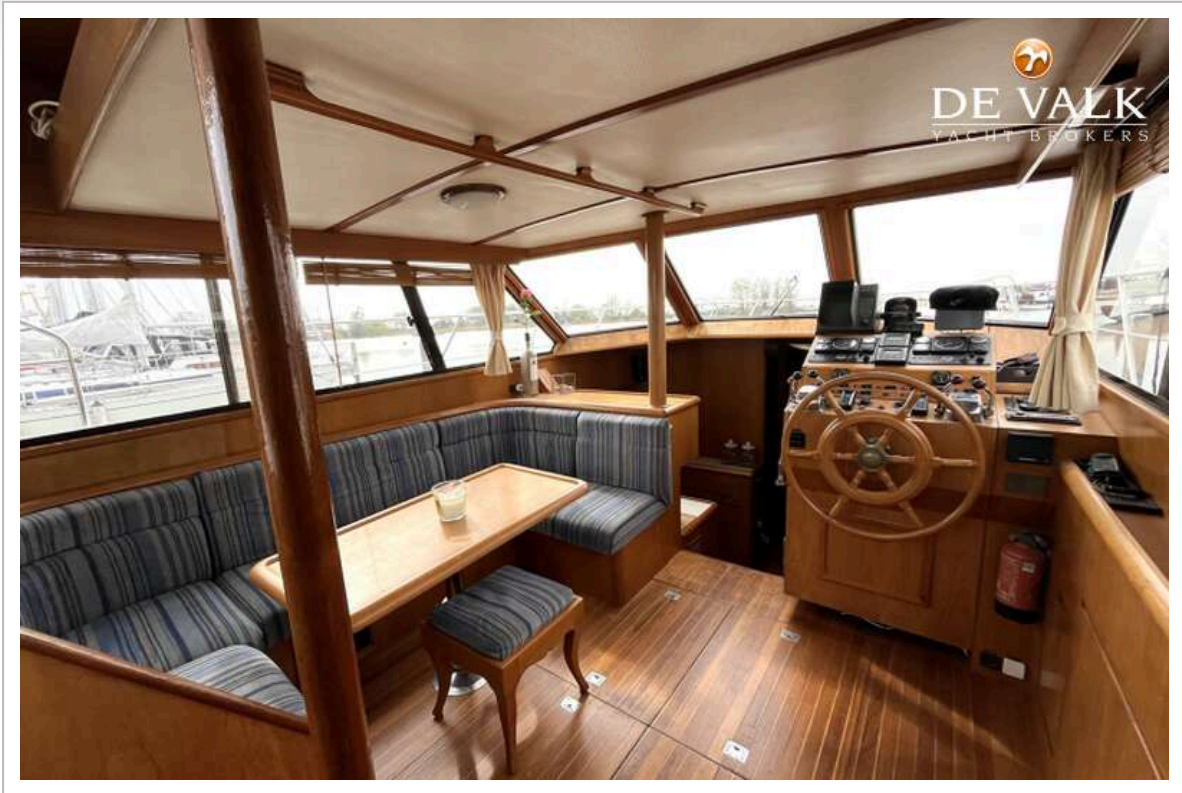
PRESIDENT 37



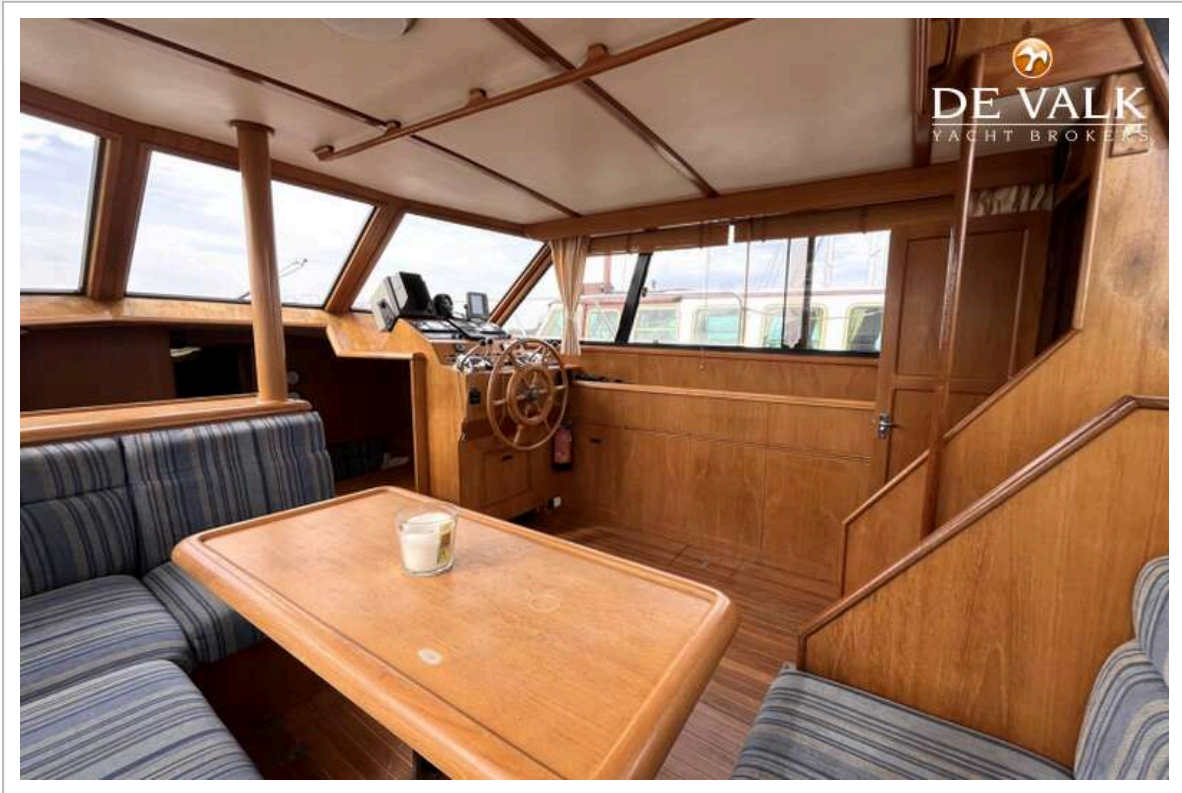
PRESIDENT 37



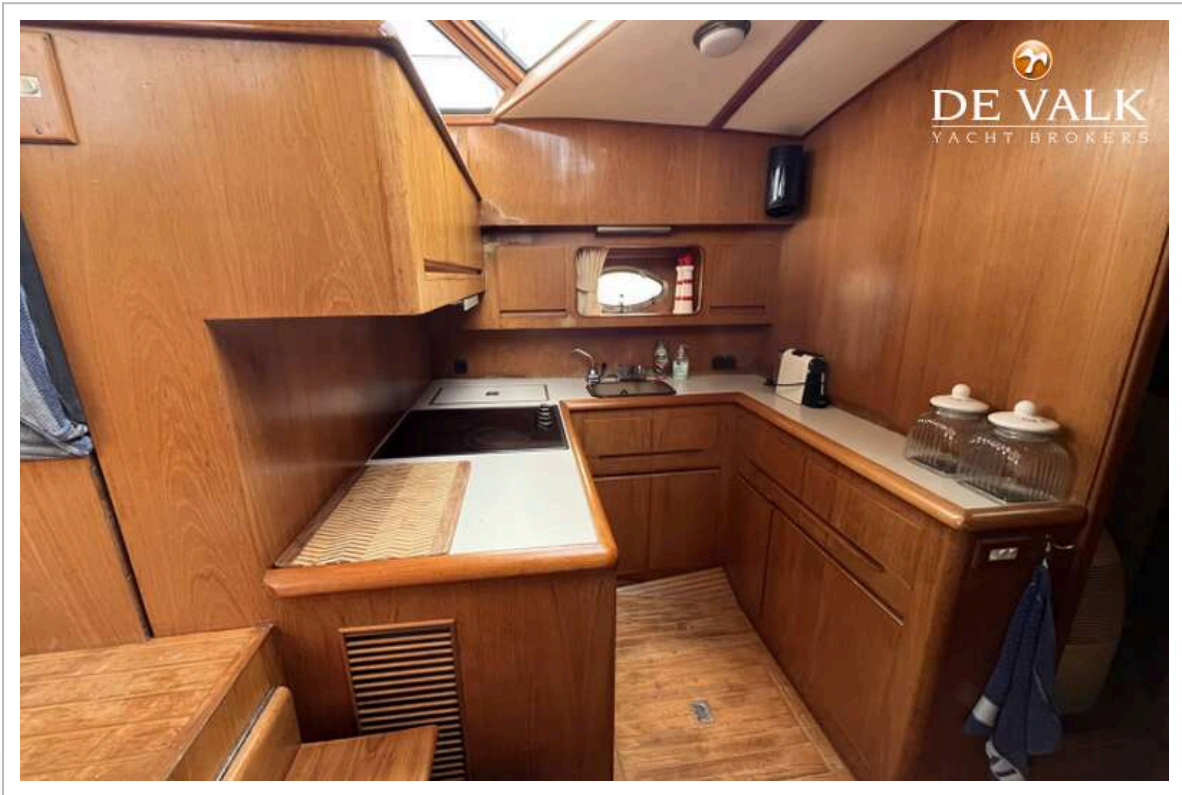
PRESIDENT 37



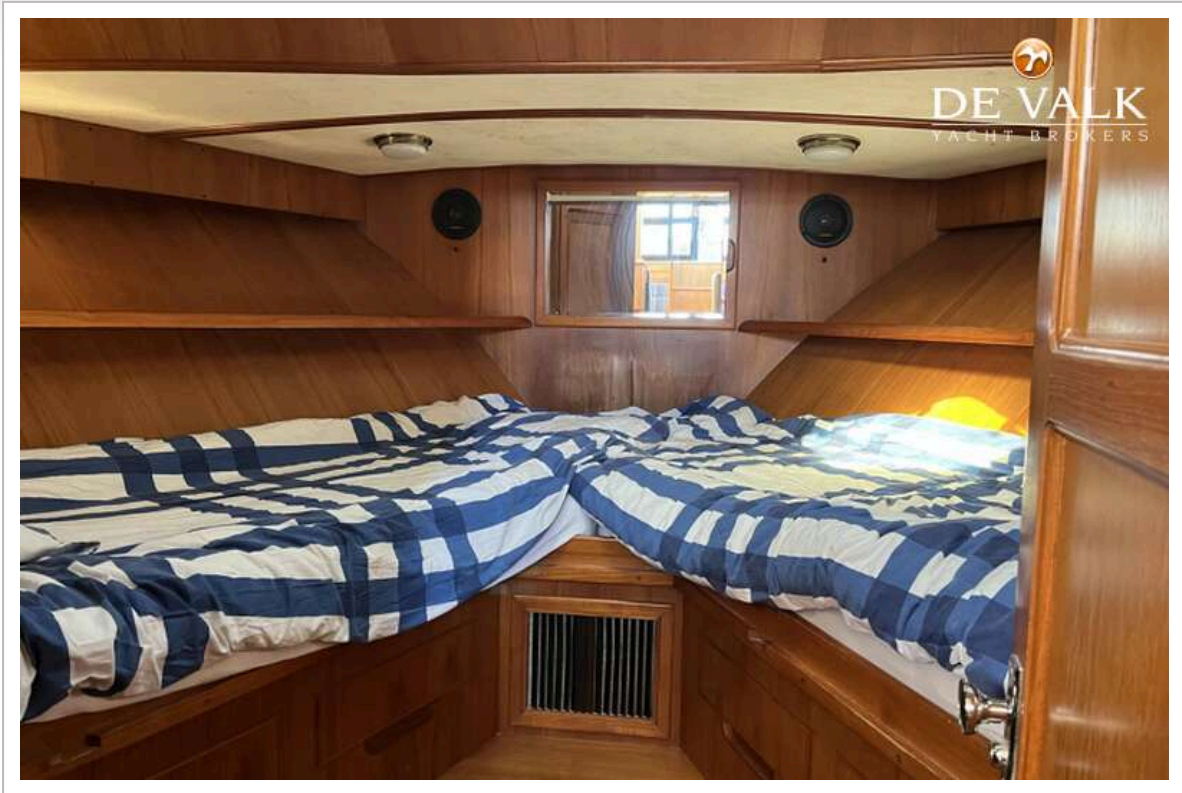
PRESIDENT 37



PRESIDENT 37



PRESIDENT 37



PRESIDENT 37



PRESIDENT 37

