



DE VALK
YACHT BROKERS



DAY PASSENGERS SHIP 25 M



DE VALK
YACHT BROKERS

DAY PASSENGERS SHIP 25 M

KOMMENTARE DES MAKLERS

Day passengers ship 25 m refitted in 2024 and in operation as a liner all year round in Greece. Antifouled in 2025 and maintained excellently by the current owner who has constructed her. Class: INSB, Hellenic Merchant Ships Inspection Service. A1 GMDSS. Capacity: 200 PAX.

Sofia Iliia-Salvanou

TECHNISCHE DATEN

| | | | |
|----------------------|-----------------------------------|-------------------|--------------------------------------|
| Maße | 24.95 x 7.00 x 1.98 (m) | Werft | Panagiotakis Shipyard Perama Piraeus |
| Baujahr | 1998 | Kabinen | |
| Material | Stahl | Kojen | |
| Motor(en) | 2 x SCANIA DI16043M02P diesel | PS/kW | 2 x 275.00 (PS), 202.40 (kW) |
| Angebotspreis | € 1.150.000 (MwSt. Nicht bezahlt) | Liegeplatz | elsewhere / nicht im Verkaufsbüro |

KONTAKT

| | | | |
|---------------------|---|----------------|------------------|
| Verkaufsbüro | De Valk Corfu | Telefon | (+30) 6948681503 |
| Adresse | New Port of Corfu, near Gouvia Marina 490 83 Corfu GR | E-Mail | corfu@devalk.nl |

HAFTUNGSAUSSCHLUSS

Diese Angaben erfolgen nach bestem Wissen, können jedoch nicht garantiert werden.



DAY PASSENGERS SHIP 25 M

ALLGEMEIN

| | |
|---|--------------------------------------|
| Modell | DAY PASSENGERS SHIP 25 M |
| Typ | Motoryacht |
| Rumpflänge (m) | 24,95 |
| Wasserlinienlänge (m) | 22,45 |
| Breite (m) | 7,00 |
| Tiefgang (m) | 1,98 |
| Baujahr | 1998 |
| Werft | Panagiotakis Shipyard Perama Piraeus |
| Land | Griechenland |
| Gewicht (t) | 102,8 |
| Brutto tonnage | 119 |
| Rumpfmateral | Stahl |
| Rumpffarbe | Weiß |
| Material Aufbauten | Stahl |
| Deckmaterial | Stahl |
| Deck Finish | Antirutsch Farbe |
| Antifouling (Jahr) | August 2025 |
| Decks Luke | ja |
| Bullauge | ja |
| Treibstofftank (Liter) | 12.000 |
| Füllstandsanzeige (Treibstofftank) | ja |
| Füllstandsanzeige (Tagestank) | ja |
| Trinkwassertank (Liter) | 2.000 |
| Füllstandsanzeige (Trinkwasser) | ja |
| Fäkaelien Tank (Liter) | Bio treatment |
| Radsteuerung | ja |
| Not-Pinne | ja |
| Weitere Info | Hull survey report-Ultra sonic test |
| Weitere Info | DWT: 22,39 Tons |



UNTERKUNFT

| | |
|--------------------|----|
| Salon | ja |
| Klima Anlage | ja |
| Tür zum Achterdeck | ja |
| Kombüse | ja |
| Arbeitsfläche | ja |
| Spülbecken | ja |
| Kuhlschrank | ja |
| Warmwasser System | ja |
| Wasserdruck System | ja |
| Kaffeemaschine | ja |

MASCHINEN

| | |
|----------------------------|----------------------------|
| Motoranzahl | 2 |
| Marke | SCANIA |
| Typ | DI16043M02P |
| PS | 275 |
| kW | 202.40 |
| Kraftstoffart | Diesel |
| Installiert im Jahr | 2008 |
| Überholung im Jahr | 2024 |
| Höchstgeschwindigkeit (Kn) | 14 |
| Marschgeschwindigkeit (Kn) | 12 |
| Verbrauch (l/h) | 53 |
| Antrieb | Schraubenwelle |
| Welle Dichtung | ja |
| Propeller Typ | fest |
| Material Propellerwelle | Edelstahl |
| Elektrische Bilgenpumpe | ja |
| Elektrische Anlage | ja |
| Generator | MERCEDES recently serviced |



| | |
|------------------------------|---------------------------|
| Betriebstunden Generator | 2000 |
| Generator 2 | DEUTCH, recently serviced |
| Betriebstunden Generator 2 | 2000 |
| Batterien | 2023 |
| Starterbatterie | 2023 |
| Versorgungsbatterie | 2023 |
| Generatorbatterie | ja |
| Batterie Monitor | ja |
| Batterie Ladegerat | ja |
| Batterie Ladegerat/Umwandler | ja |

NAVIGATION

| | |
|------------------------|----|
| Kompass | ja |
| Tiefenanziege | ja |
| UKW | ja |
| Plotter/GPS | ja |
| Epirb | ja |
| Navigation Beleuchtung | ja |

AUSRÜSTUNG

| | |
|----------------|----|
| Sonnenschirm | ja |
| Heck-Tur | ja |
| Gangway | ja |
| Anker | ja |
| Ankerkette | ja |
| Ankerwinde | ja |
| Rettungsinsel | ja |
| Schwimvesten | ja |
| Fenderkissen | ja |
| Festmacher | ja |
| Reserve Teilen | ja |



| | |
|-------------------------------|----|
| Werkzeug | ja |
| TV | ja |
| Feuerloscher | ja |
| Feuerloscher in Maschine Raum | ja |



DAY PASSENGERS SHIP 25 M



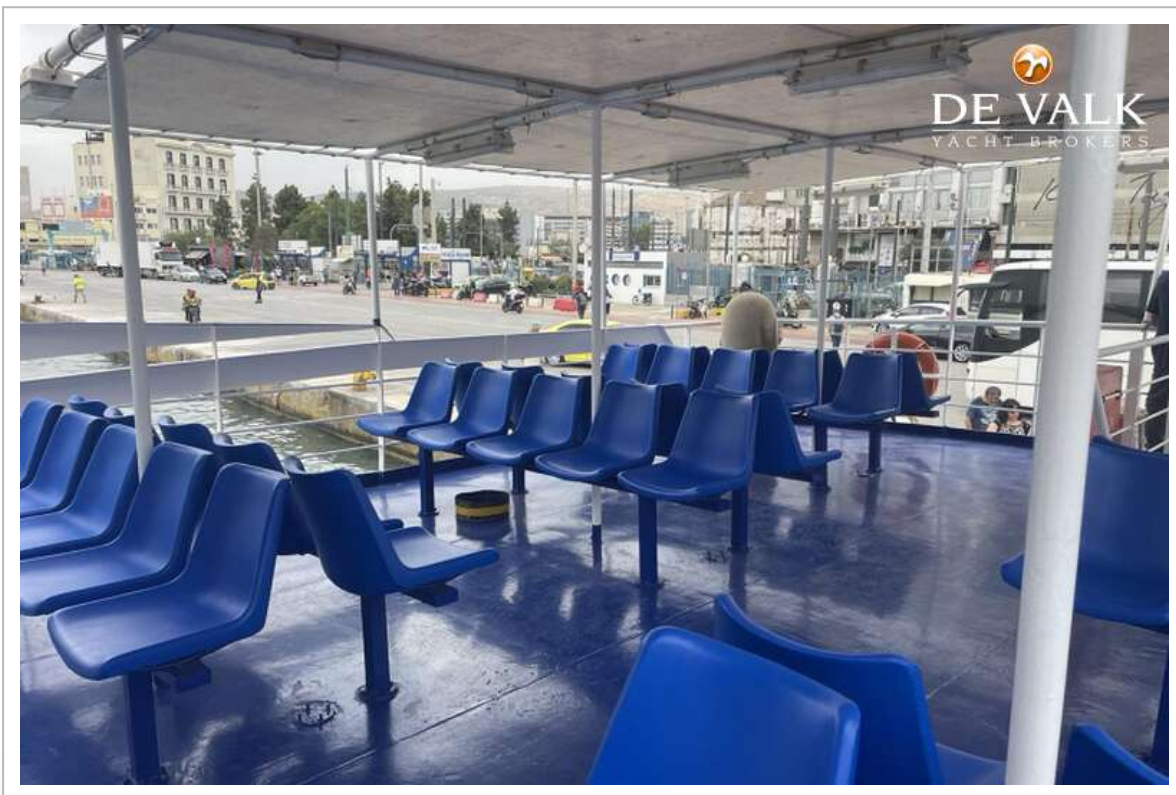
DAY PASSENGERS SHIP 25 M



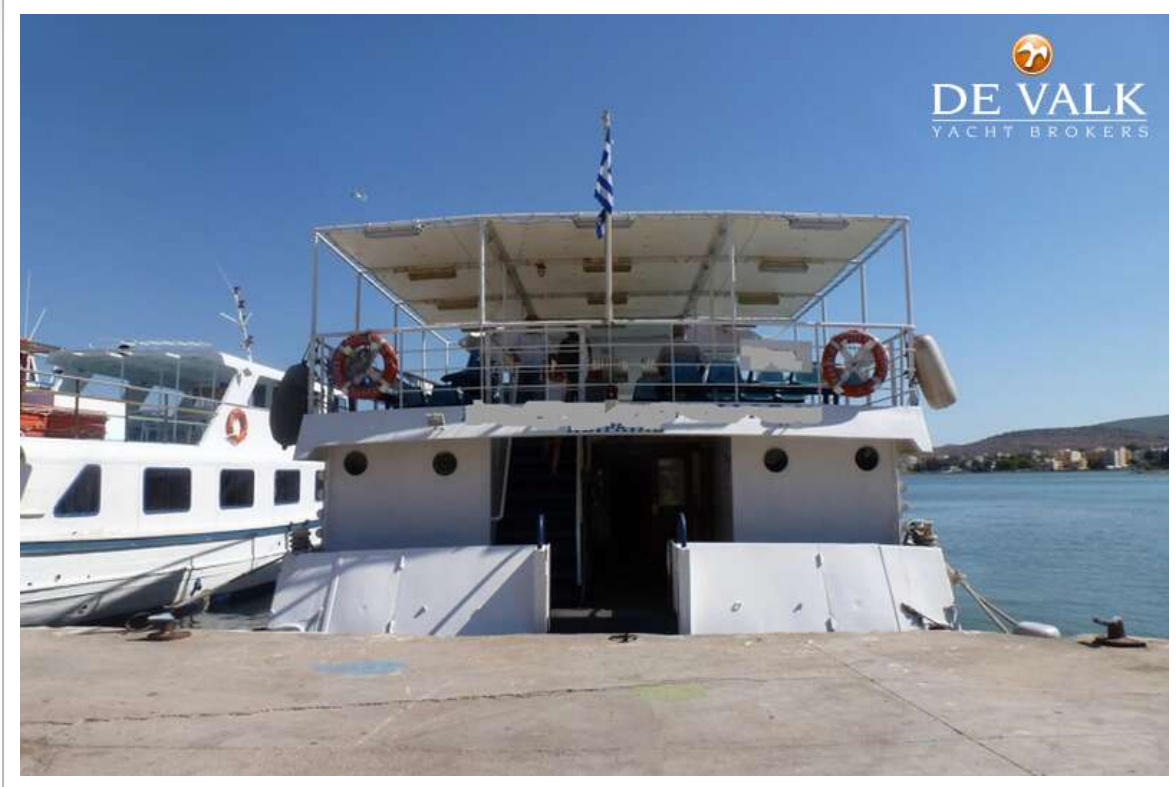
DAY PASSENGERS SHIP 25 M



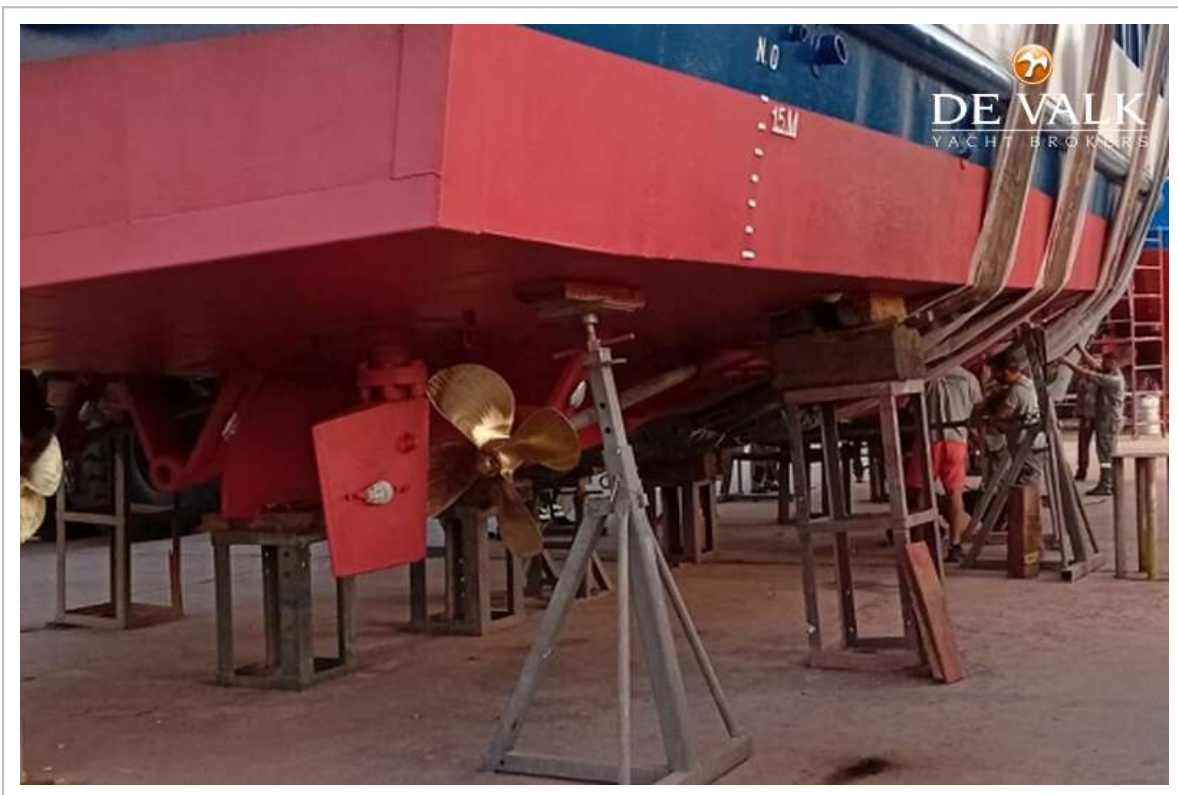
DAY PASSENGERS SHIP 25 M



DAY PASSENGERS SHIP 25 M



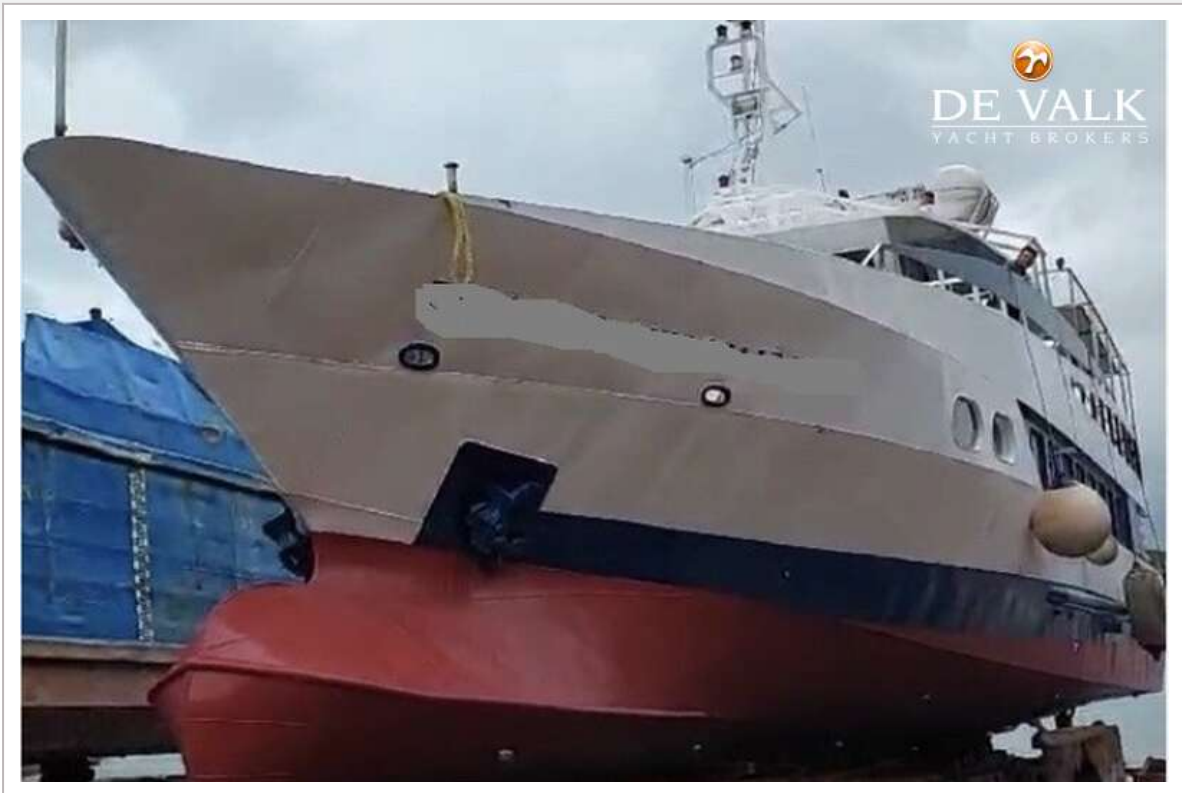
DAY PASSENGERS SHIP 25 M



DAY PASSENGERS SHIP 25 M



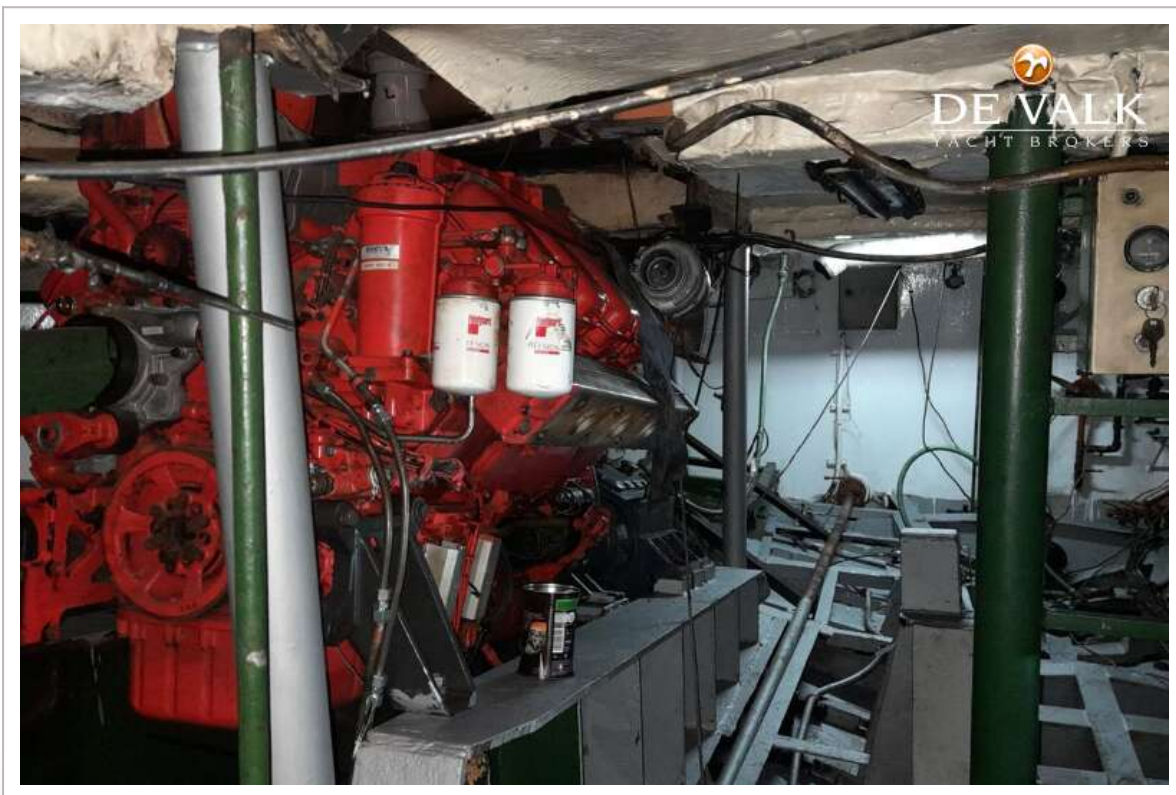
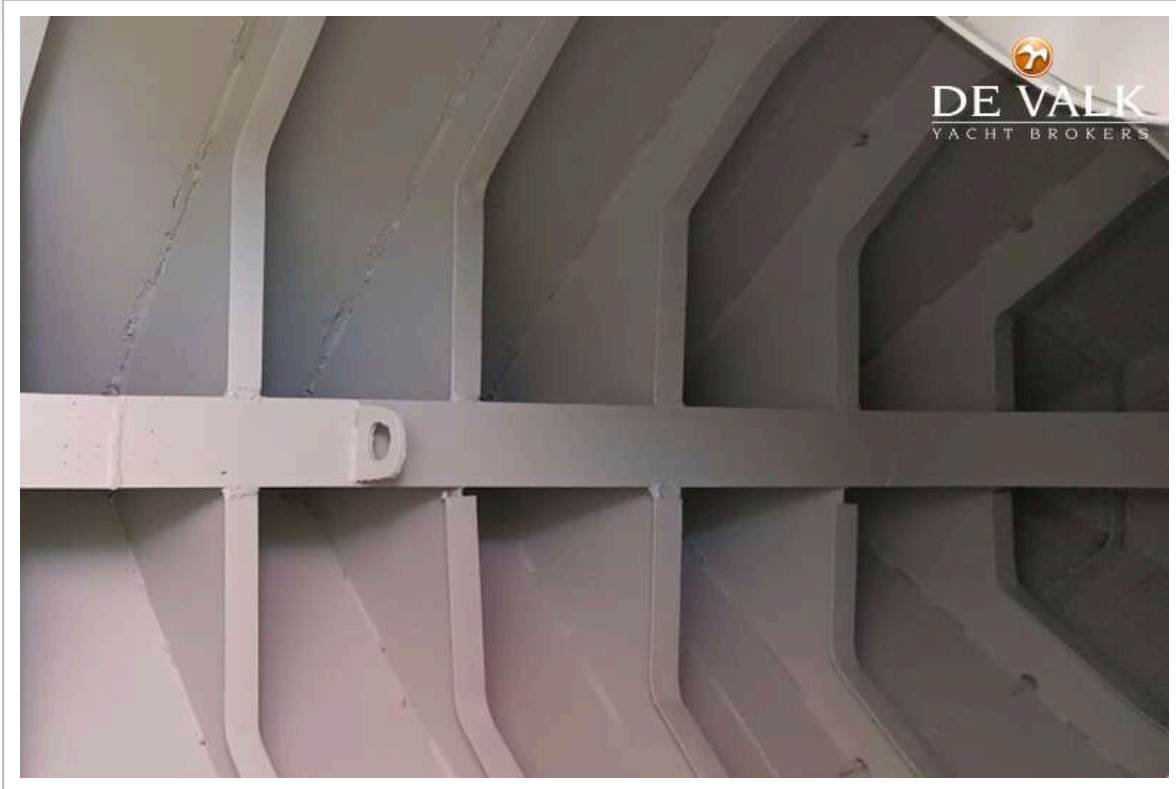
DAY PASSENGERS SHIP 25 M



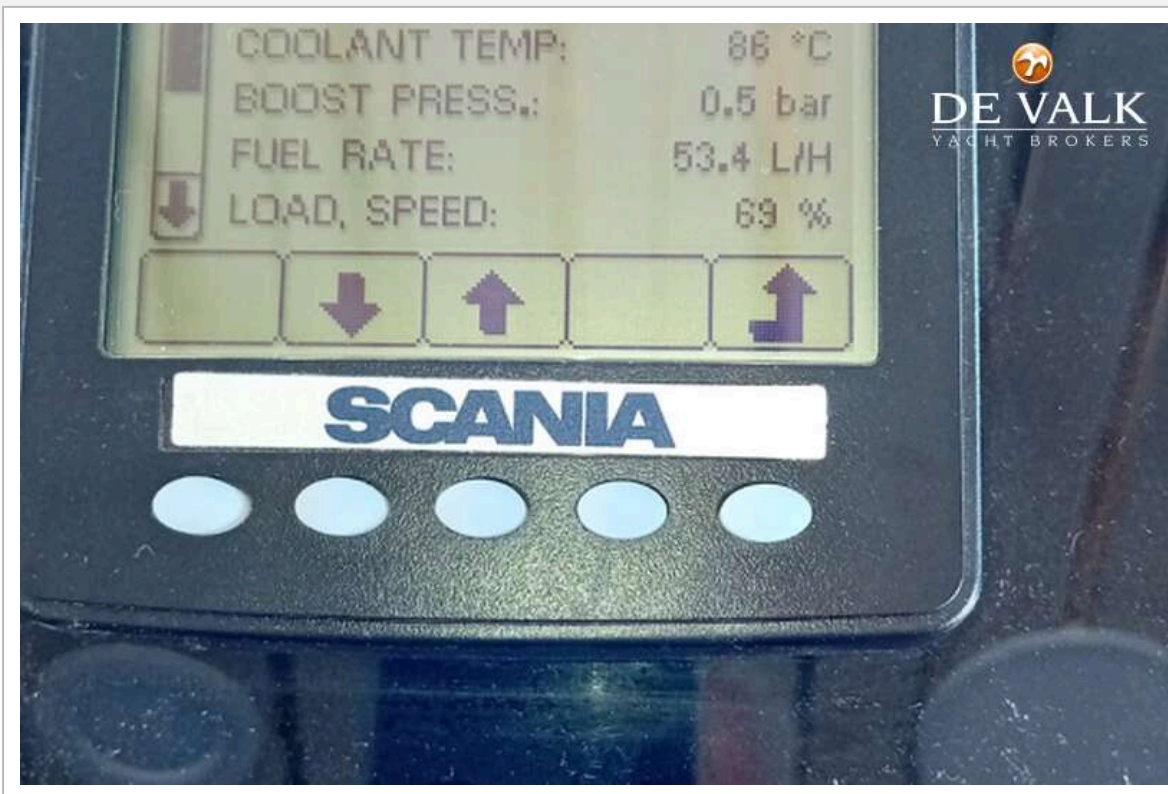
DAY PASSENGERS SHIP 25 M



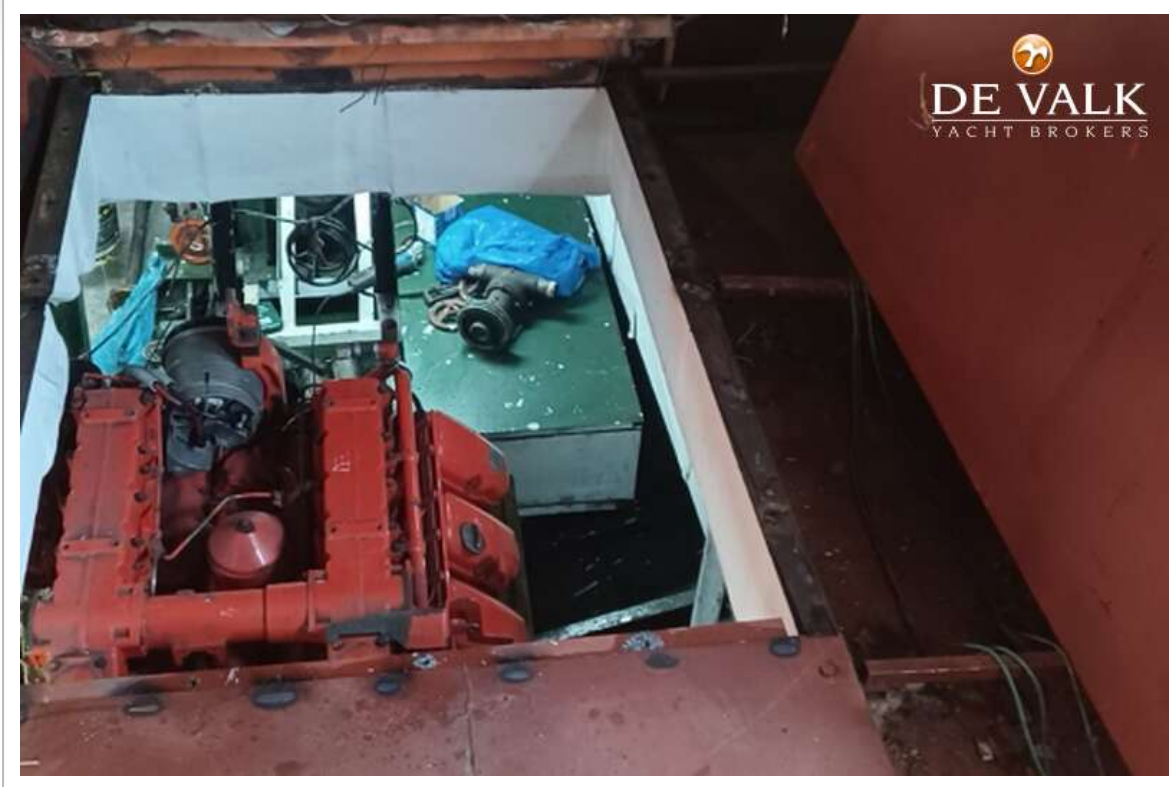
DAY PASSENGERS SHIP 25 M



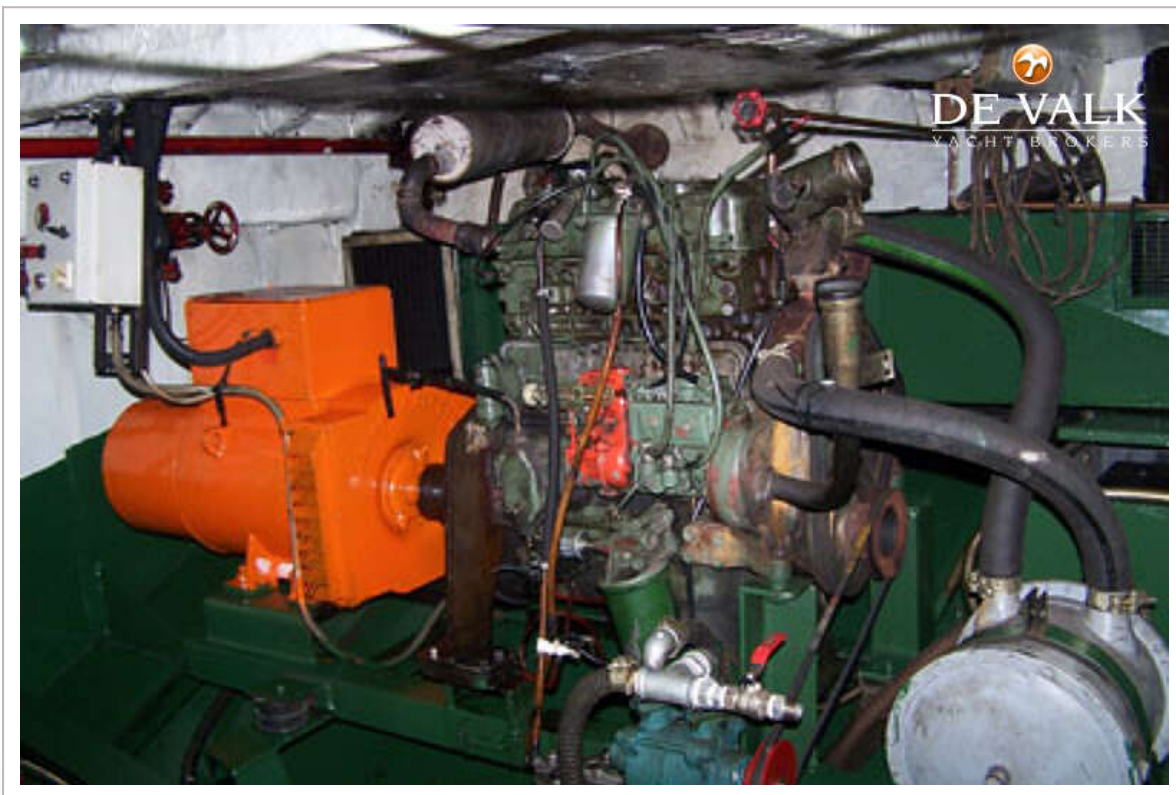
DAY PASSENGERS SHIP 25 M



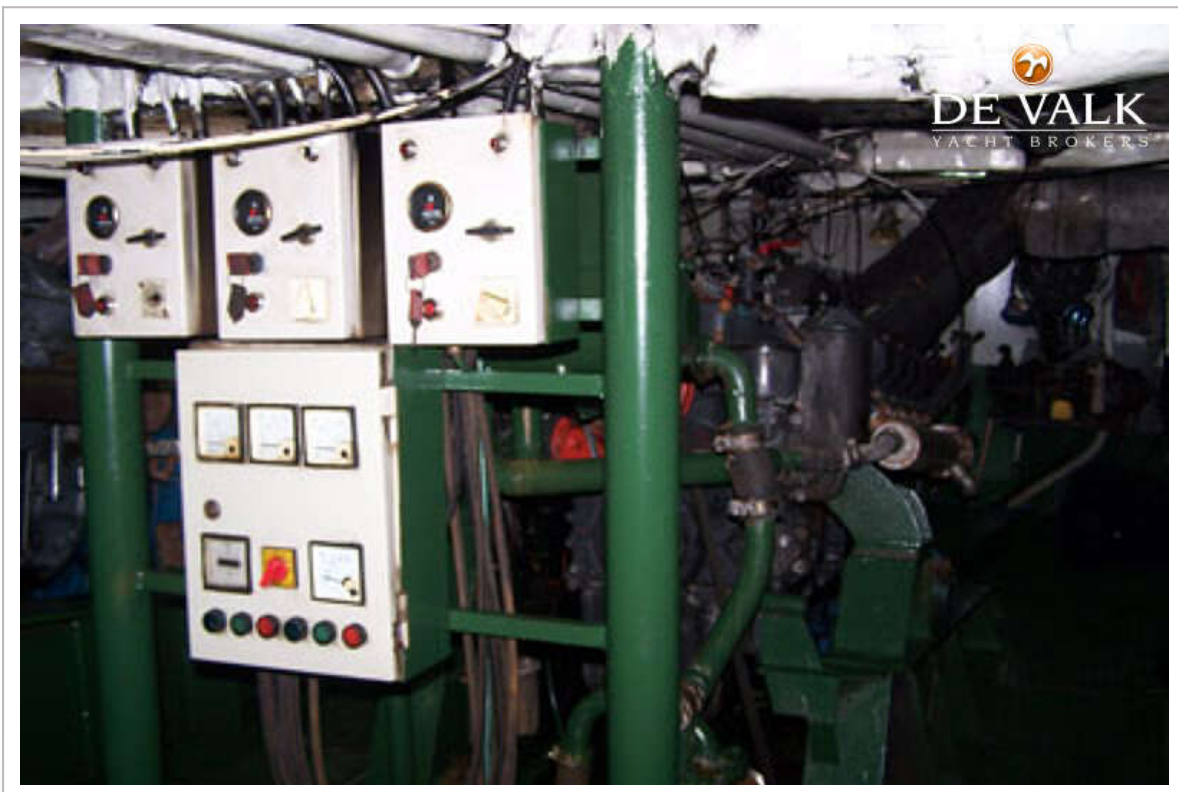
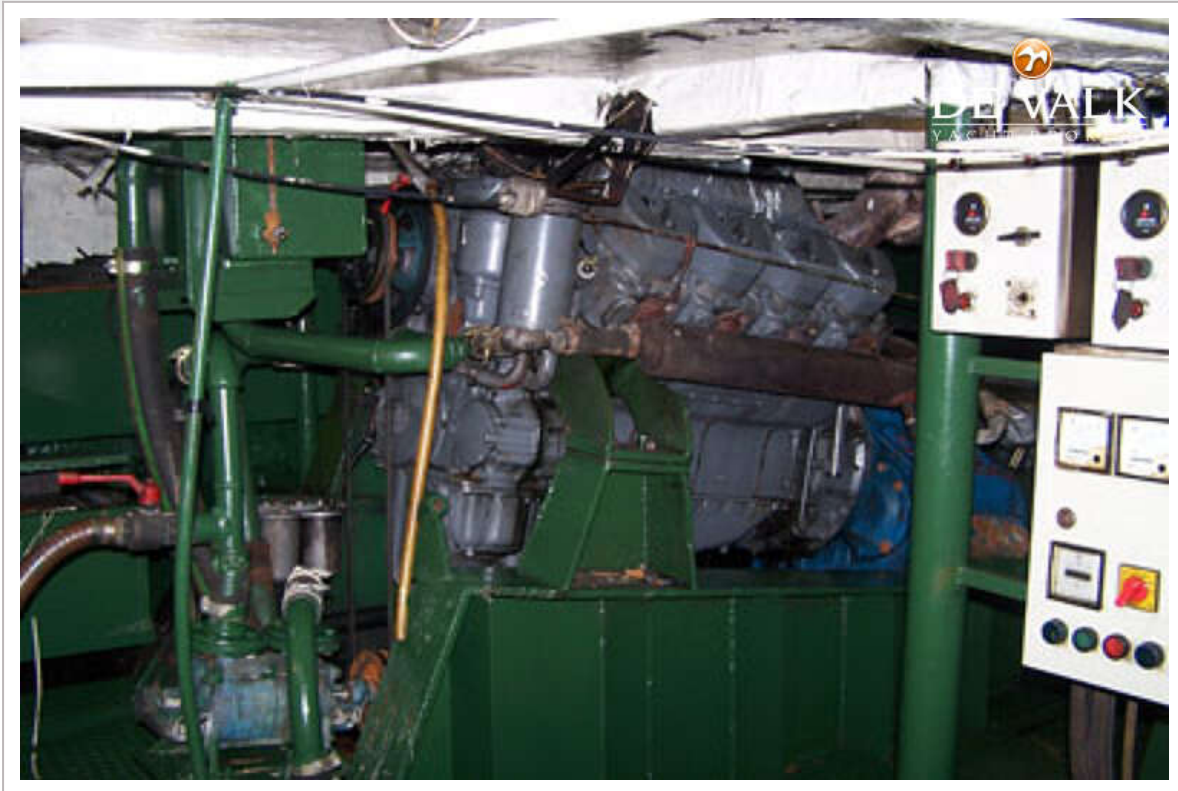
DAY PASSENGERS SHIP 25 M



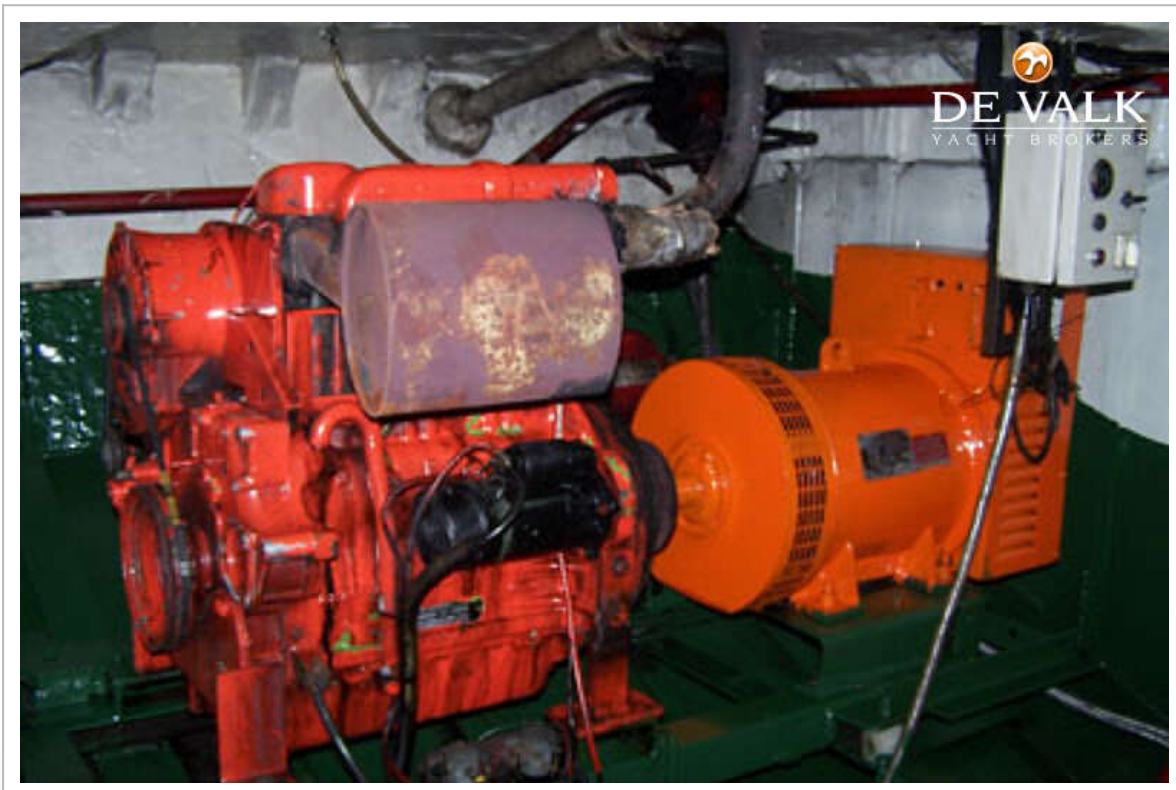
DAY PASSENGERS SHIP 25 M



DAY PASSENGERS SHIP 25 M



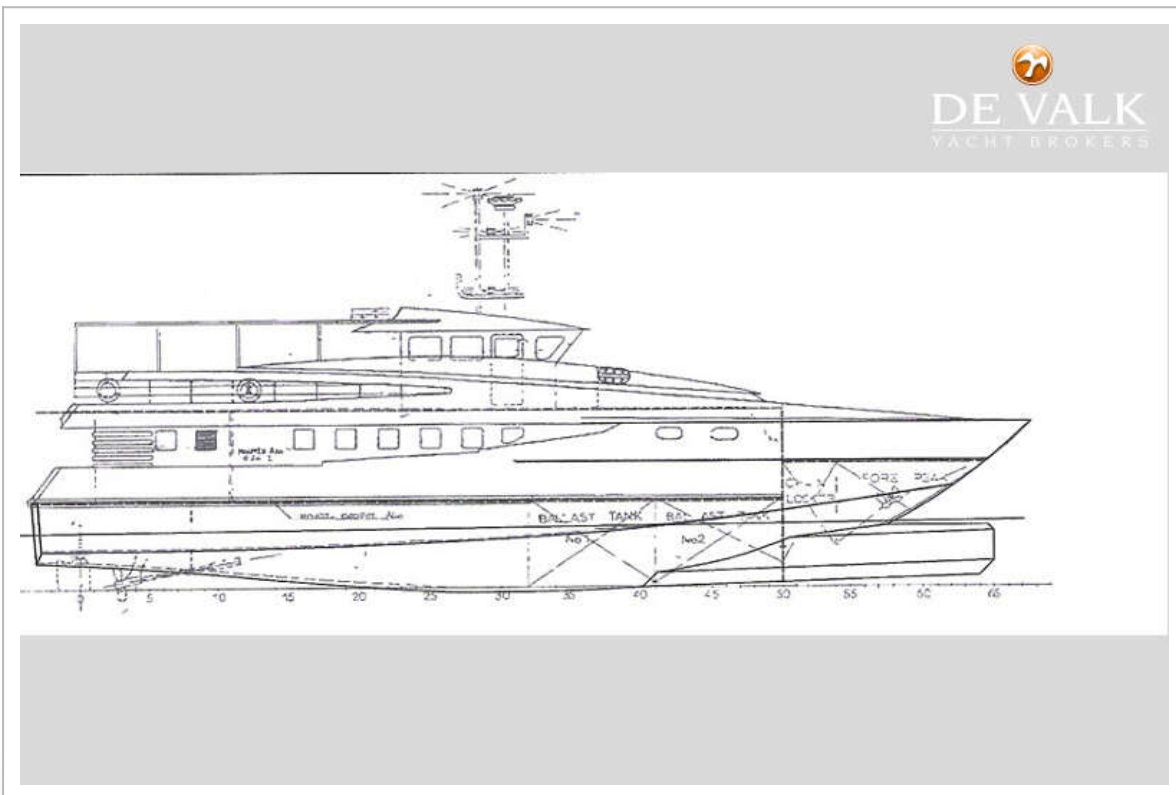
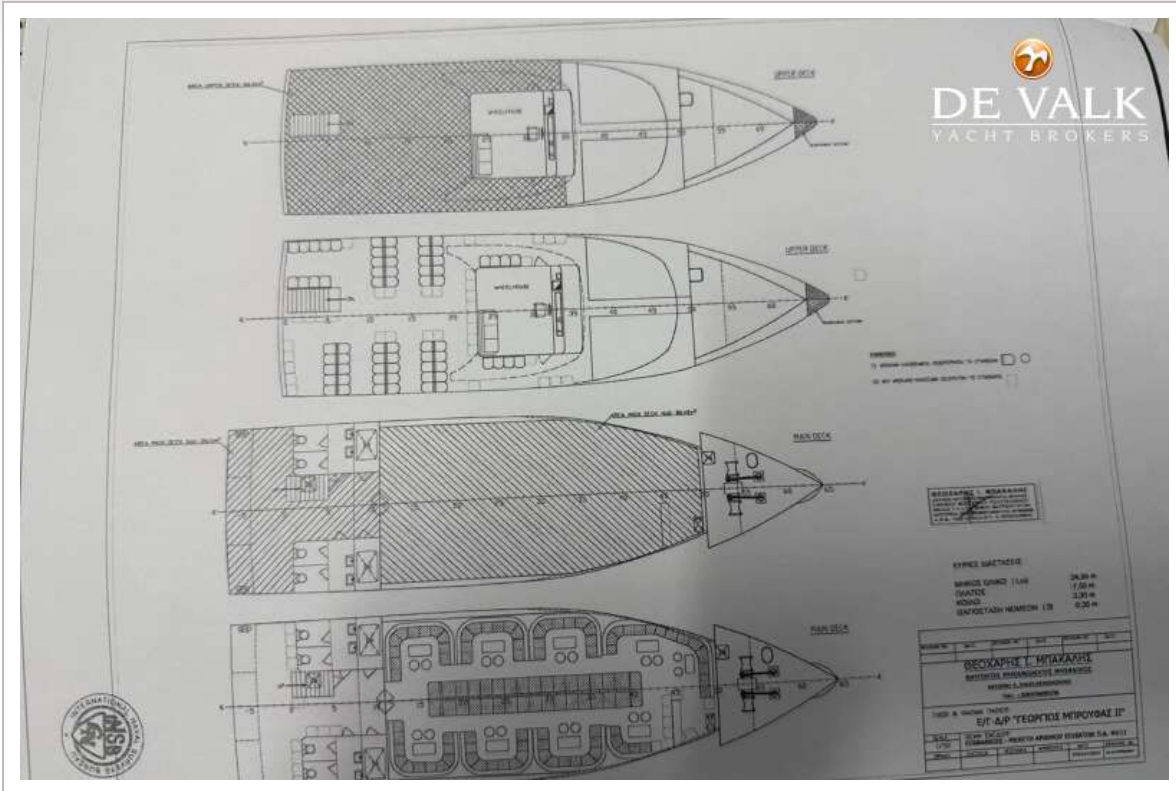
DAY PASSENGERS SHIP 25 M



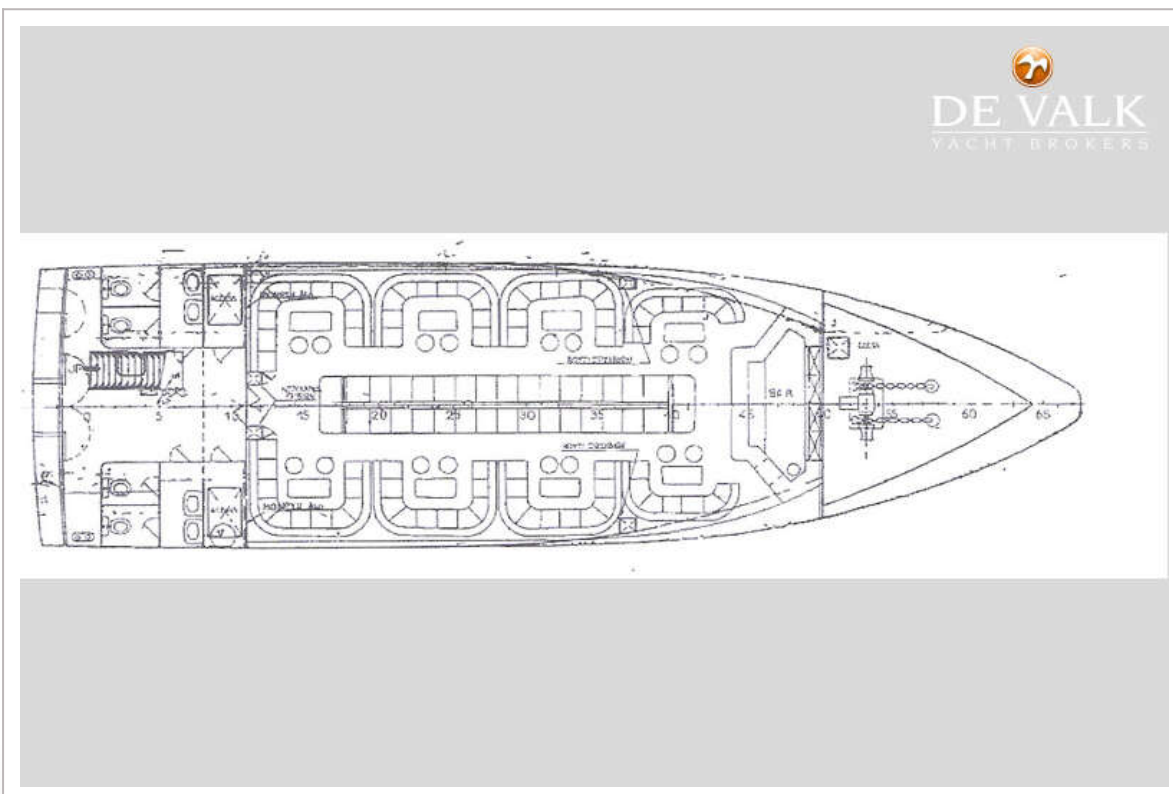
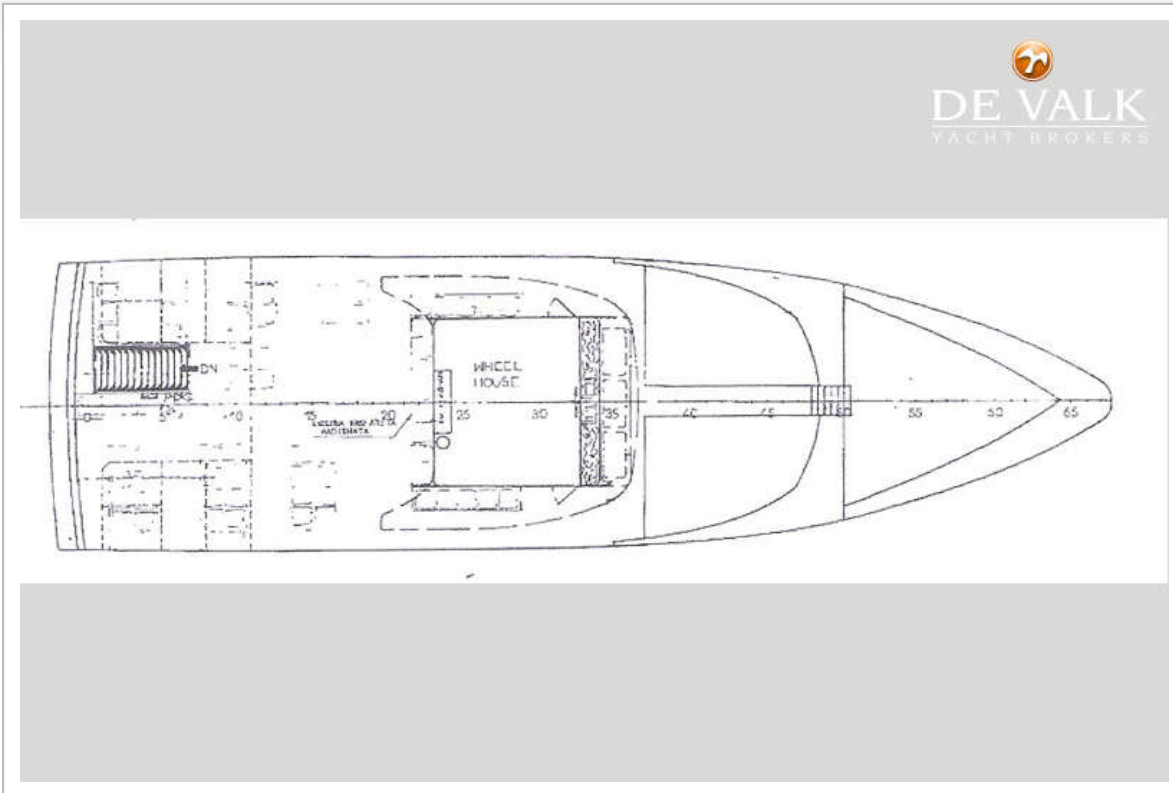
DAY PASSENGERS SHIP 25 M



DAY PASSENGERS SHIP 25 M



DAY PASSENGERS SHIP 25 M



DAY PASSENGERS SHIP 25 M



DE VALK
YACHT BROKERS

