



DE VALK  
YACHT BROKERS



RO/RO PAX DOUBLE ENDED FERRY 90



DE VALK  
YACHT BROKERS

# RO/RO PAX DOUBLE ENDED FERRY 90

## KOMMENTARE DES MAKLERS

RO/RO PAX Double Ended Ferry 90 m constructed in 2021. Capacity: 187 Cars, 500 Passengers. 2 A.B.C, engines 4 Generators (3 Baudouin, 1 Onan). 100 Nm limited allowed voyage according to Certificate of sea worthiness issued by the Republic of Turkey.

*Sofia Ilia-Salvanou*

## TECHNISCHE DATEN

<b>Maße</b>	89.50 x 22.00 x 5.00 (m)	<b>Werft</b>	YALOVA TURKOGLU SHIPYARD
<b>Baujahr</b>	2021	<b>Kabinen</b>	
<b>Material</b>	Stahl	<b>Kojen</b>	
<b>Motor(en)</b>	2 x A.B.C. 6DZC-1000-166-A diesel	<b>PS/kW</b>	2 x 1,803.00 (PS), 1,327.01 (kW)
<b>Angebotspreis</b>	€ 9.300.000 (MwSt. Nicht bezahlt)	<b>Liegeplatz</b>	elsewhere / nicht im Verkaufsbüro

## KONTAKT

<b>Verkaufsbüro</b>	De Valk Corfu	<b>Telefon</b>	(+30) 6948681503
<b>Adresse</b>	New Port of Corfu, near Gouvia Marina 490 83 Corfu GR	<b>E-Mail</b>	corfu@devalk.nl

## HAFTUNGSAUSSCHLUSS

Diese Angaben erfolgen nach bestem Wissen, können jedoch nicht garantiert werden.



# RO/RO PAX DOUBLE ENDED FERRY 90

## ALLGEMEIN

<b>Modell</b>	RO/RO PAX DOUBLE ENDED FERRY 90
<b>Typ</b>	Motoryacht
<b>Rumpflänge (m)</b>	89,50
<b>Breite (m)</b>	22,00
<b>Tiefgang (m)</b>	5,00
<b>Baujahr</b>	2021
<b>Werft</b>	YALOVA TURKOGLU SHIPYARD
<b>Land</b>	Türkei
<b>Entwerfer</b>	EDREK MARINE MOTOR CARRIERS COOPERATIVE
<b>Brutto tonnage</b>	1998
<b>Netto tonnage</b>	599
<b>Rumpfmateral</b>	Stahl
<b>Rumpffarbe</b>	Rot
<b>Antifouling (Jahr)</b>	2025
<b>Treibstofftank 2 (Liter)</b>	ja
<b>Trinkwassertank (Liter)</b>	ja
<b>Fäkaelien Tank (Liter)</b>	ja
<b>Radsteuerung</b>	ja
<b>Not-Pinne</b>	ja
<b>Weitere Info</b>	CLASS: TURKISH LLOYDS (IACS)
<b>Weitere Info</b>	Construction lasted 17 months & costed 60.000.000 Turk Liras

## MASCHINEN

<b>Motoranzahl</b>	2
<b>Marke</b>	A.B.C.
<b>Typ</b>	6DZC-1000-166-A
<b>PS</b>	1803
<b>kW</b>	1327.01
<b>Kraftstoffart</b>	Diesel
<b>Höchstgeschwindigkeit (Kn)</b>	14

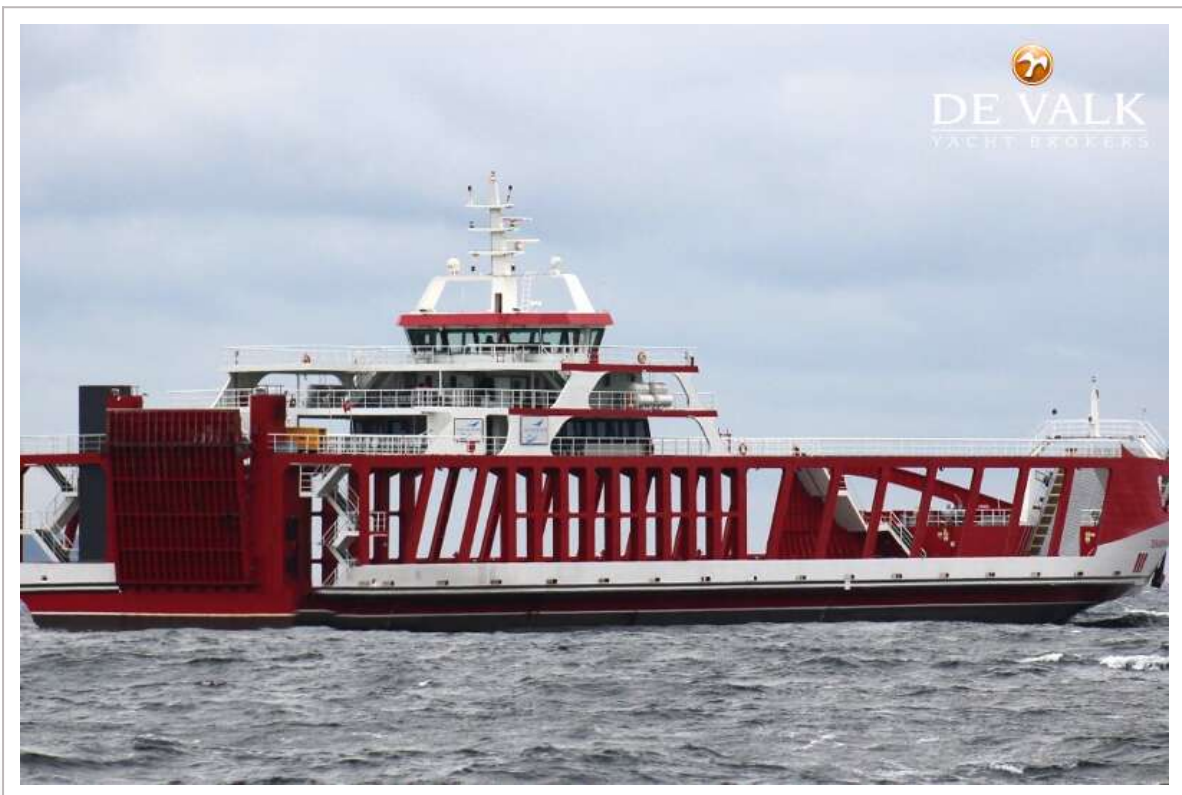


# RO/RO PAX DOUBLE ENDED FERRY 90

<b>Marschgeschwindigkeit (Kn)</b>	11
<b>Verbrauch (l/h)</b>	300
<b>Antrieb</b>	Schraubenwelle
<b>Generator</b>	BAUDOUIN 6W105S X 3
<b>Generator 2</b>	YUCHAI YC6TD800L-C20 X 1



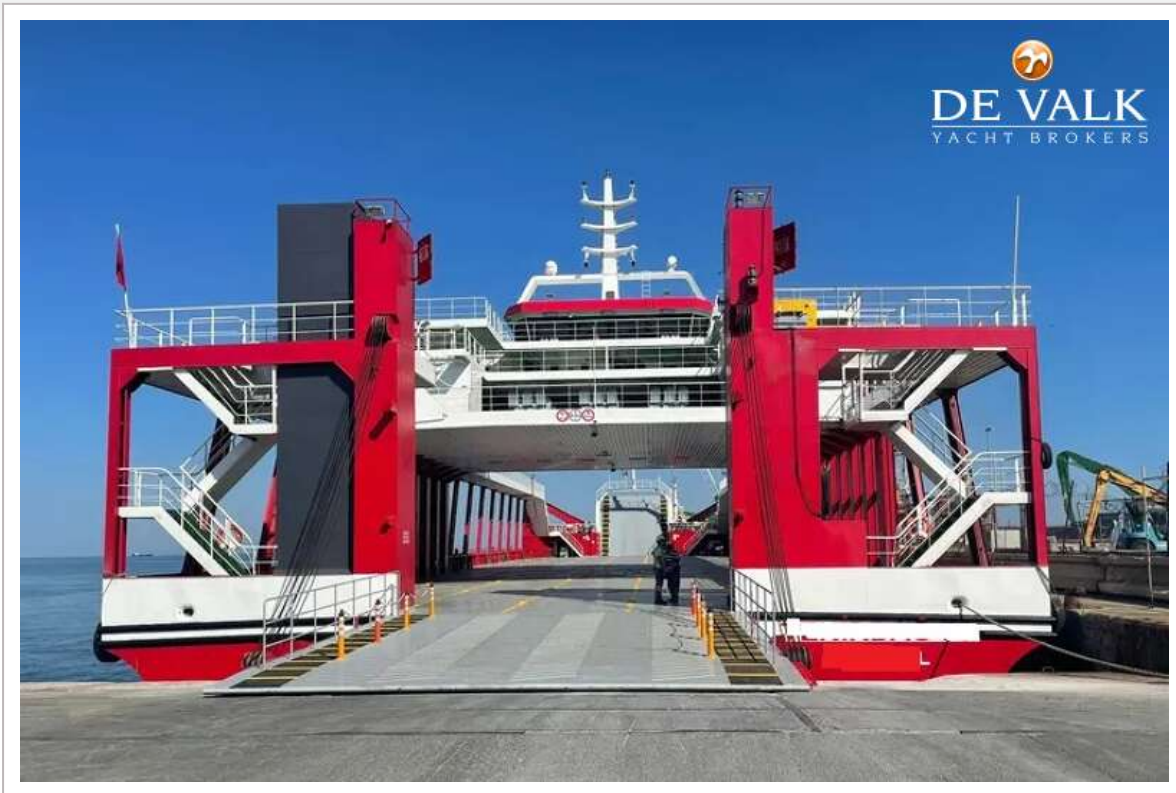
# RO/RO PAX DOUBLE ENDED FERRY 90



# RO/RO PAX DOUBLE ENDED FERRY 90



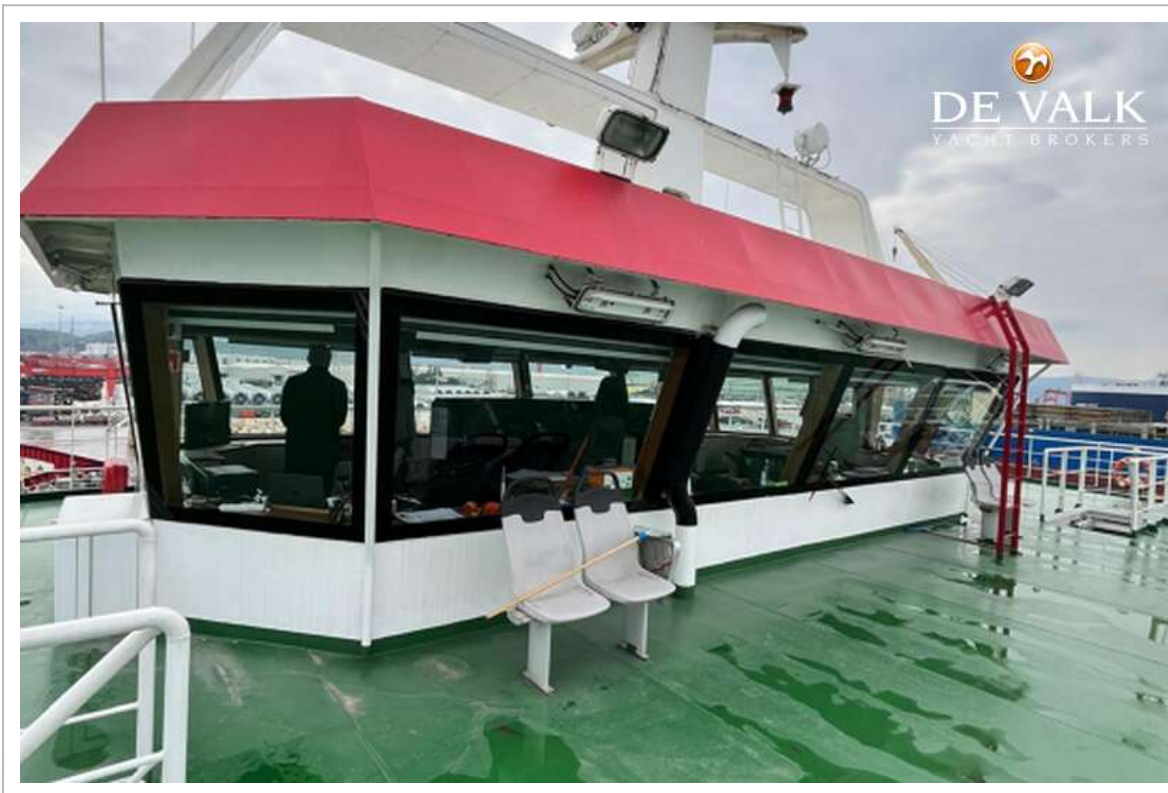
# RO/RO PAX DOUBLE ENDED FERRY 90



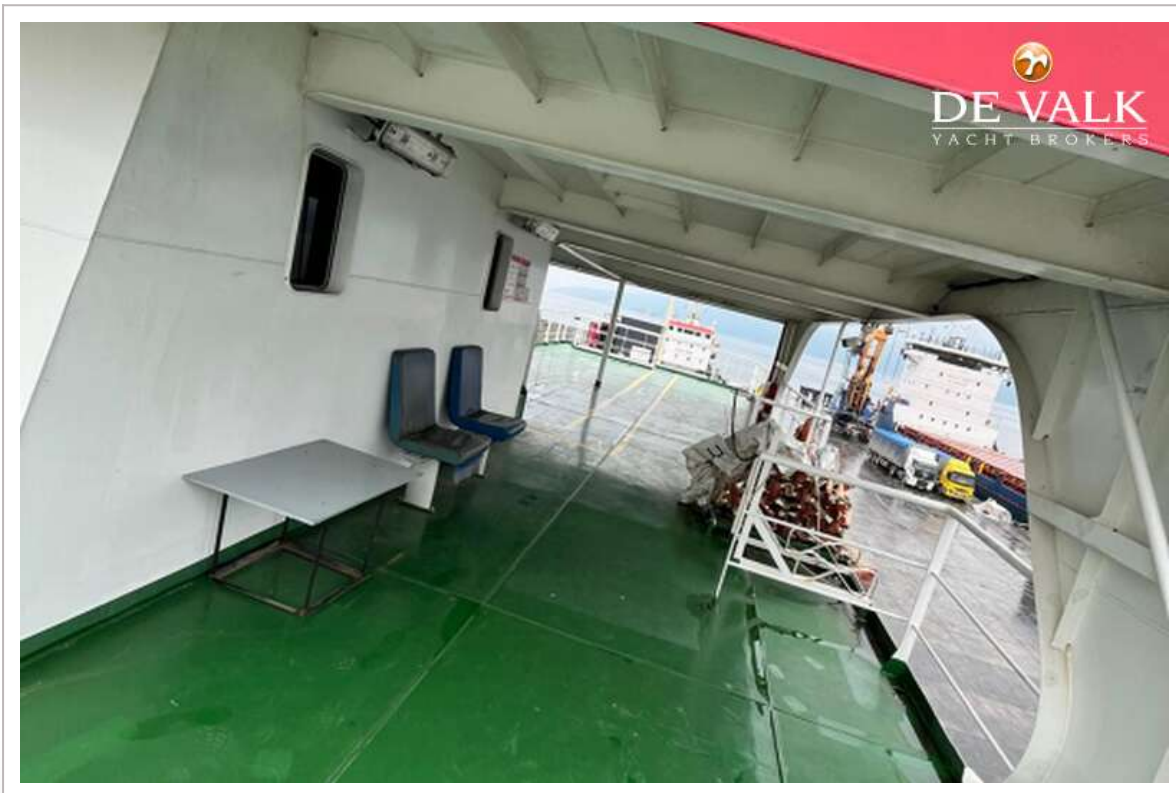
# RO/RO PAX DOUBLE ENDED FERRY 90



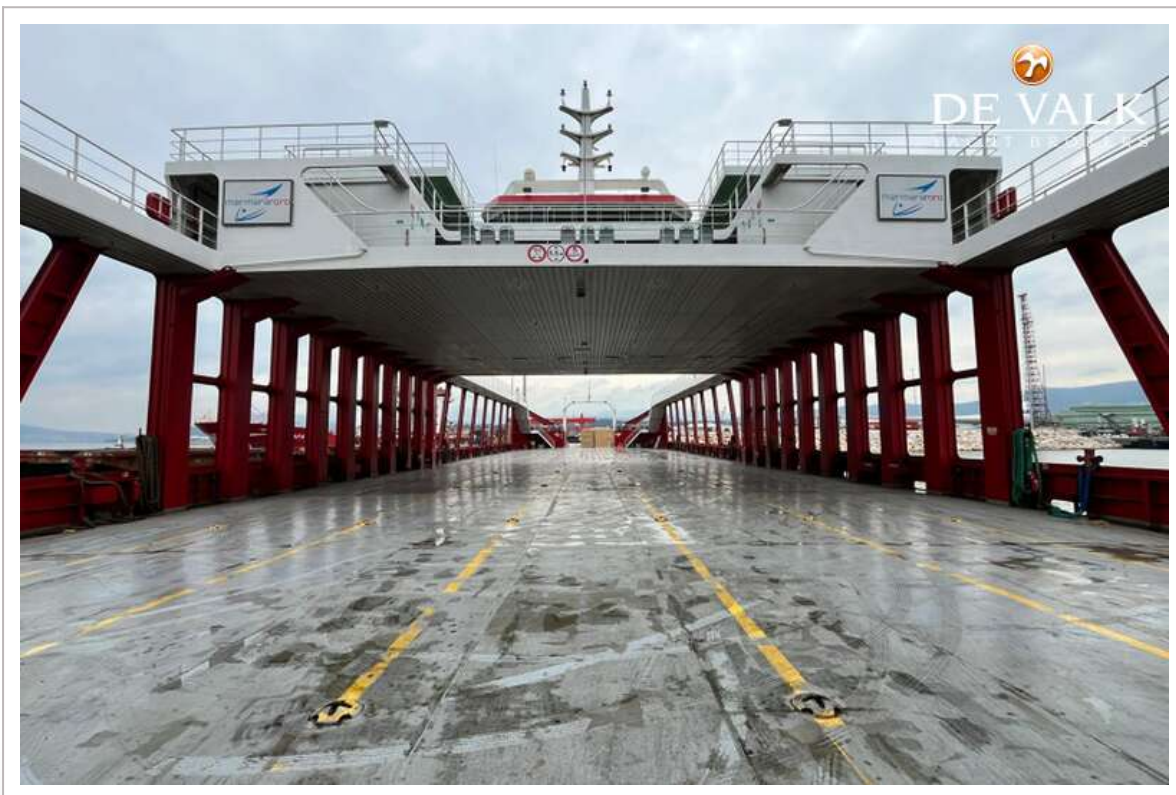
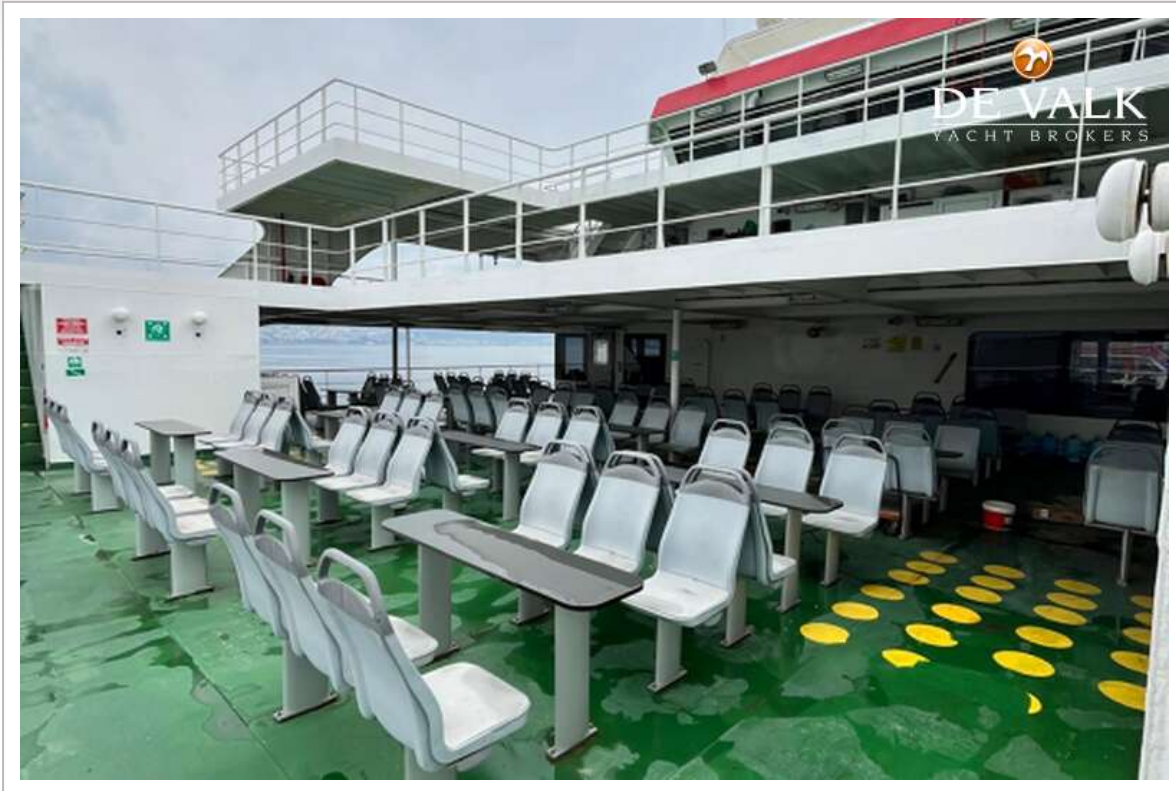
# RO/RO PAX DOUBLE ENDED FERRY 90



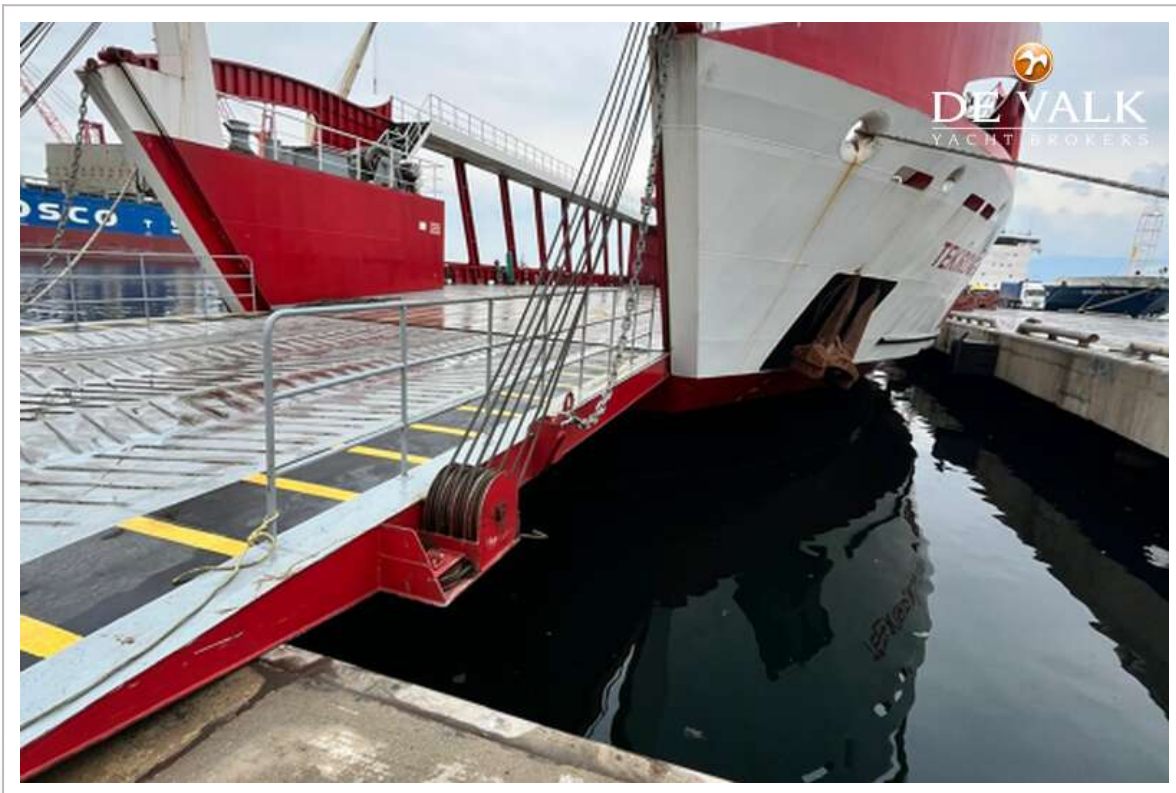
# RO/RO PAX DOUBLE ENDED FERRY 90



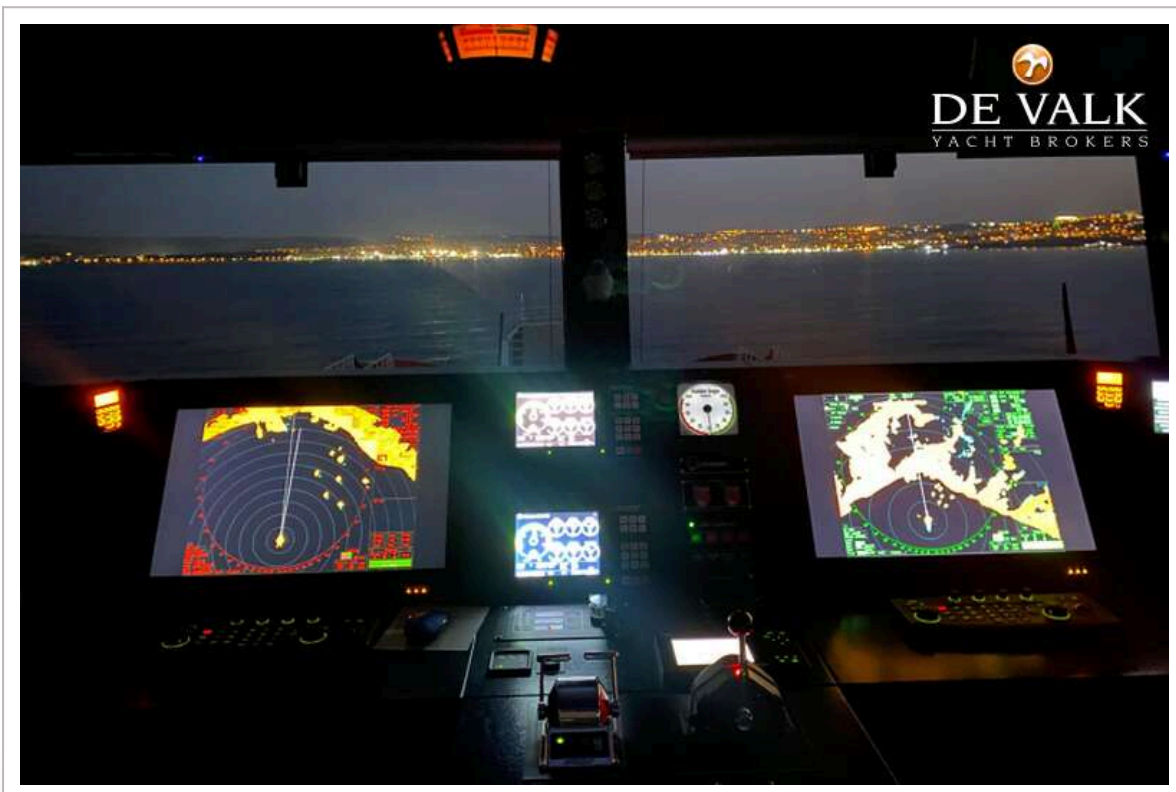
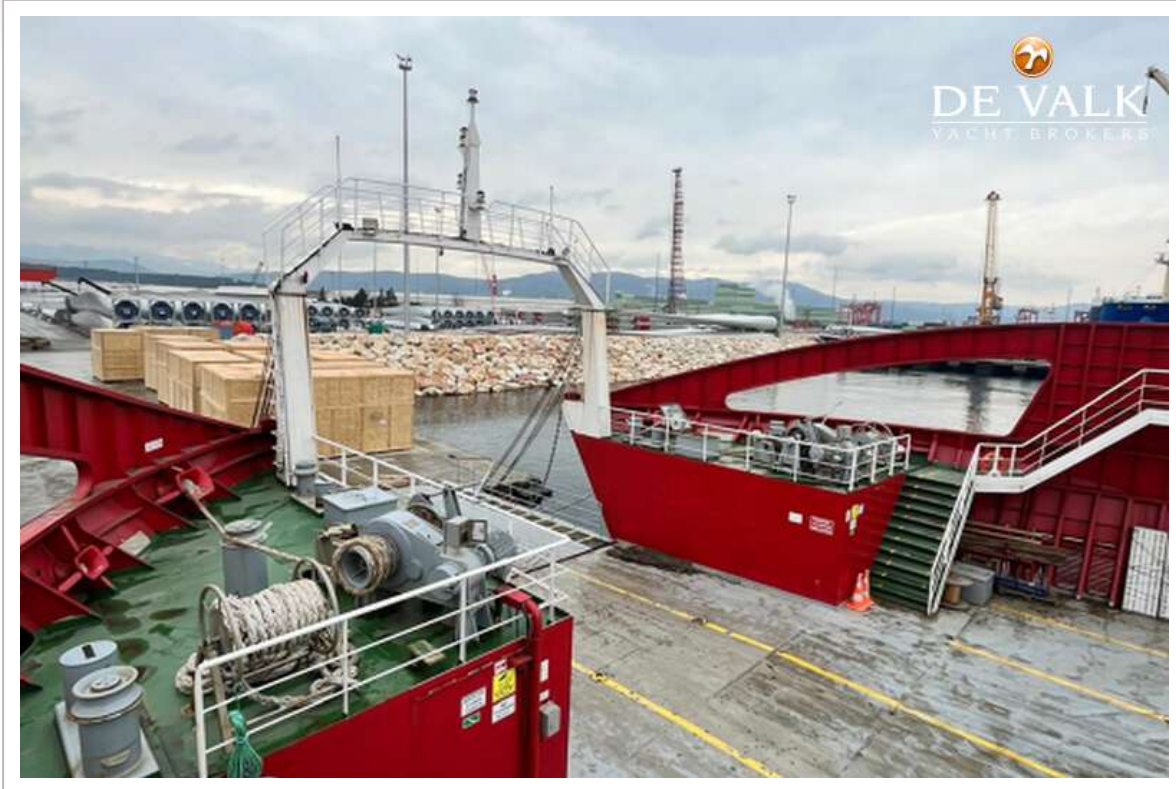
# RO/RO PAX DOUBLE ENDED FERRY 90



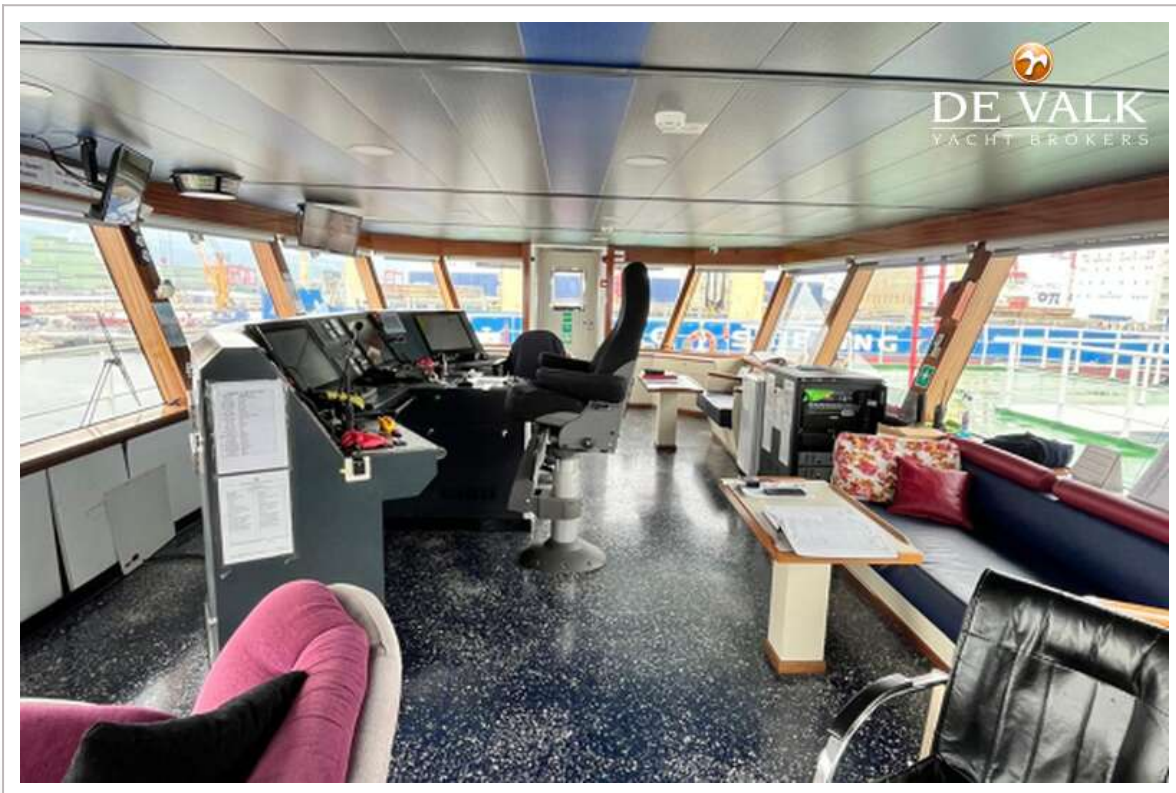
# RO/RO PAX DOUBLE ENDED FERRY 90

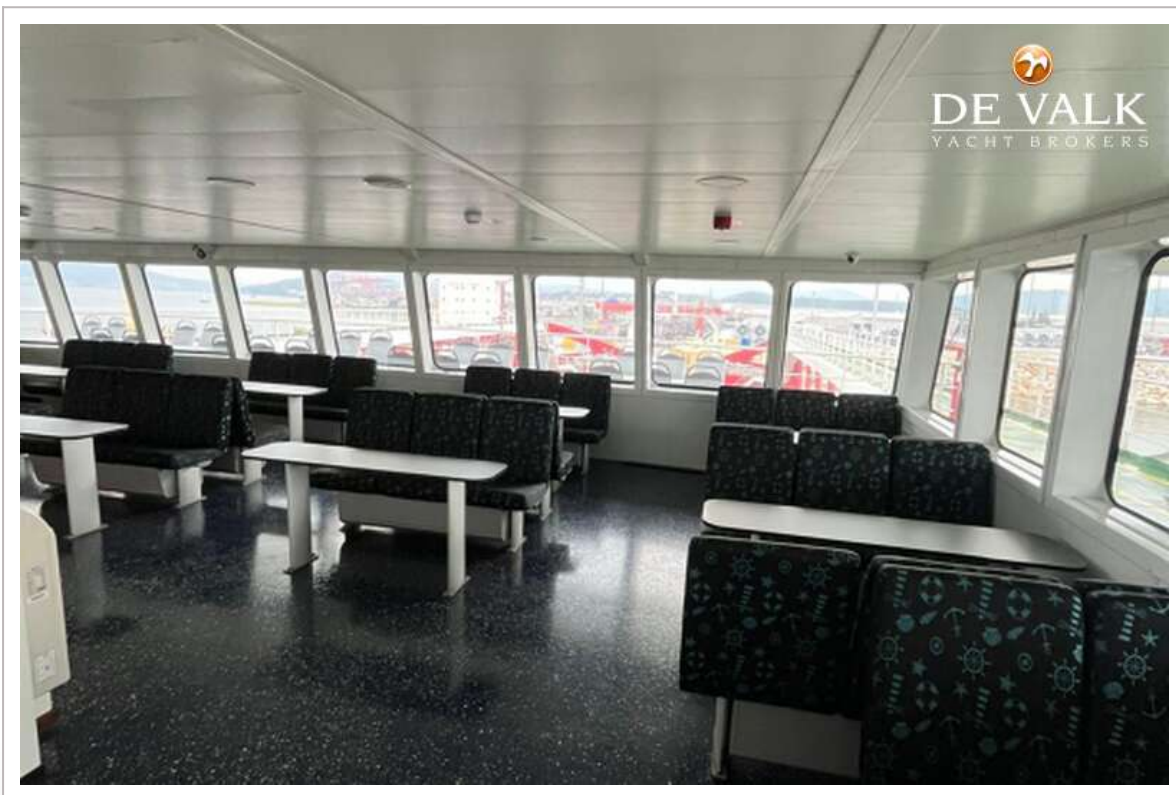


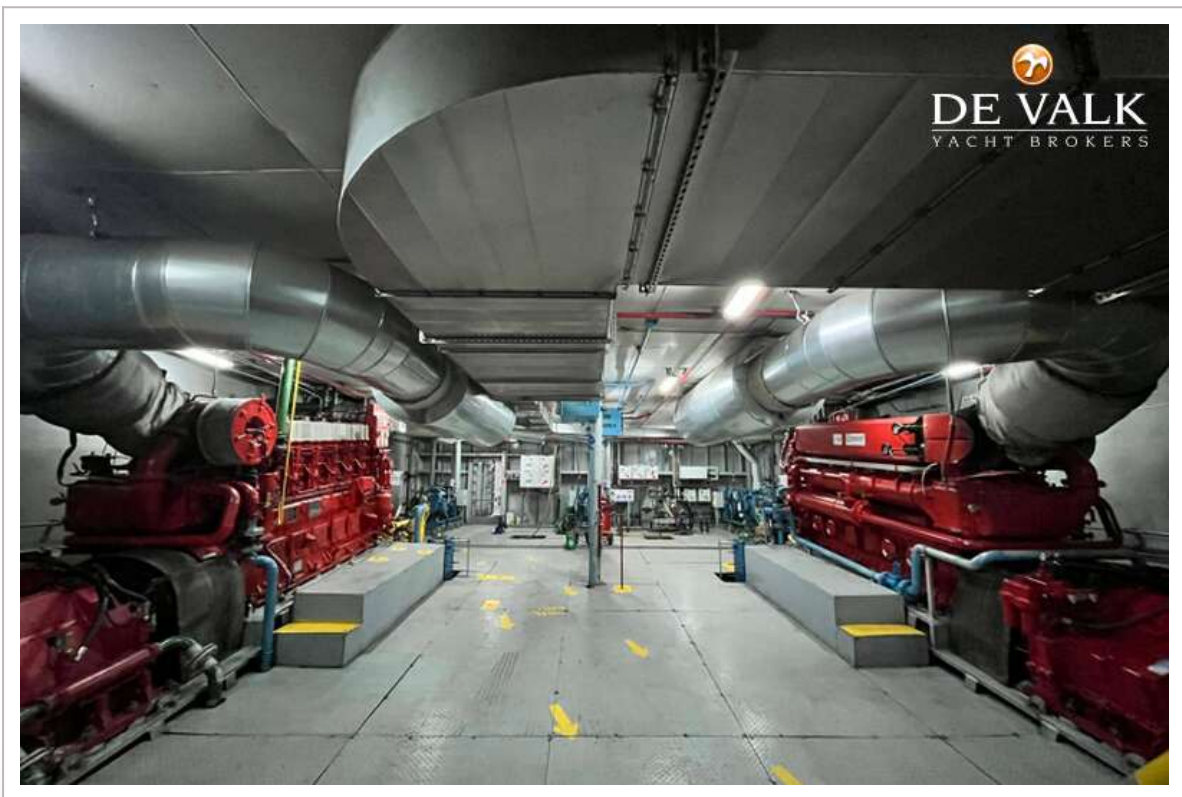
# RO/RO PAX DOUBLE ENDED FERRY 90



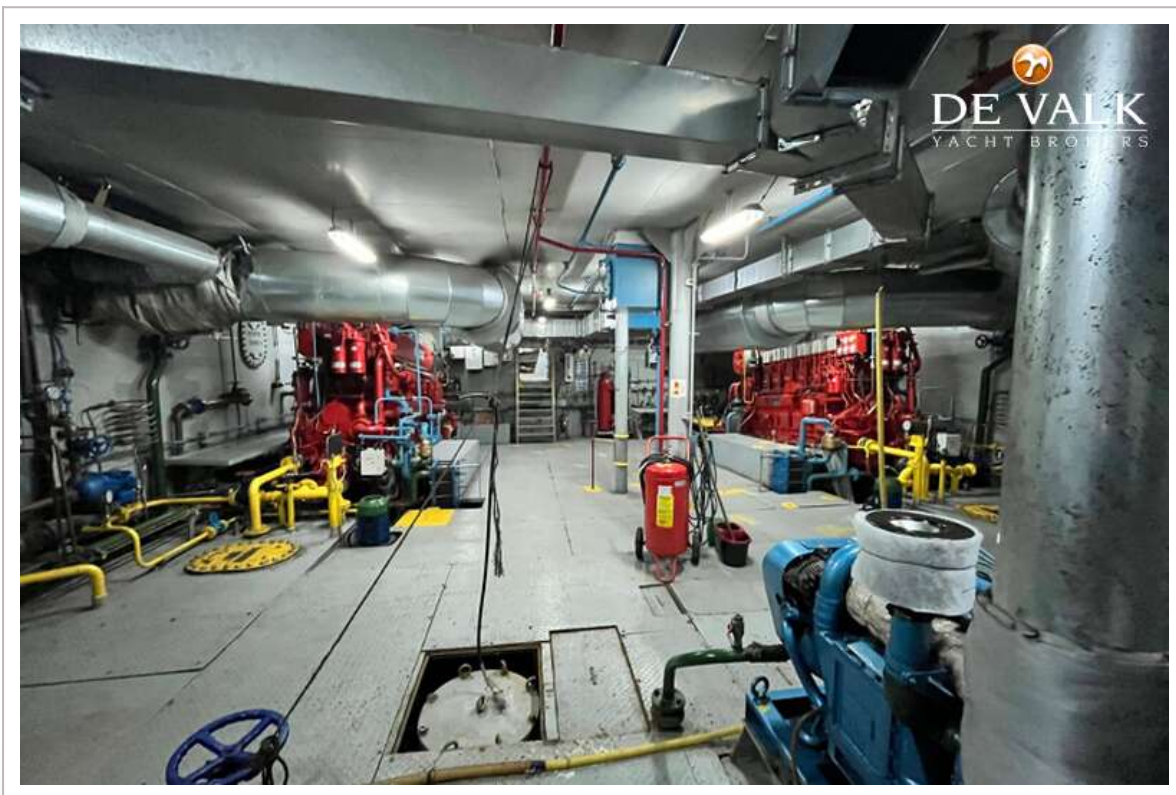
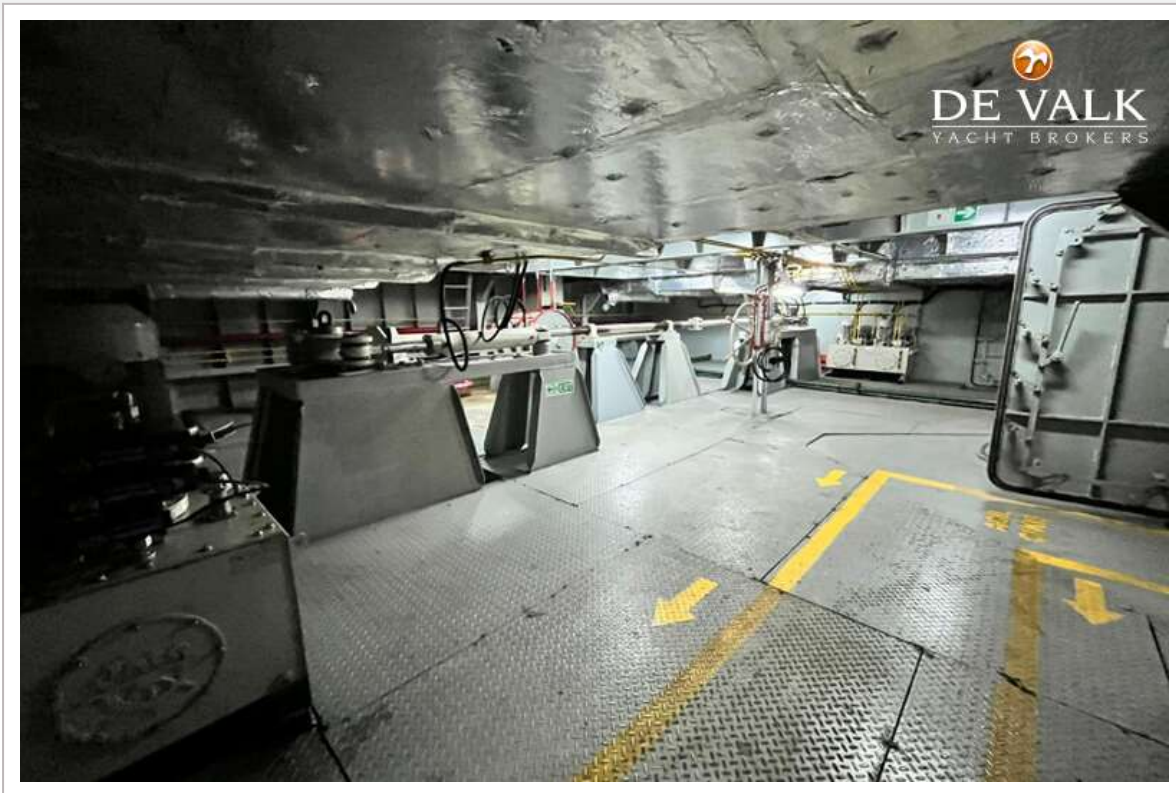
# RO/RO PAX DOUBLE ENDED FERRY 90



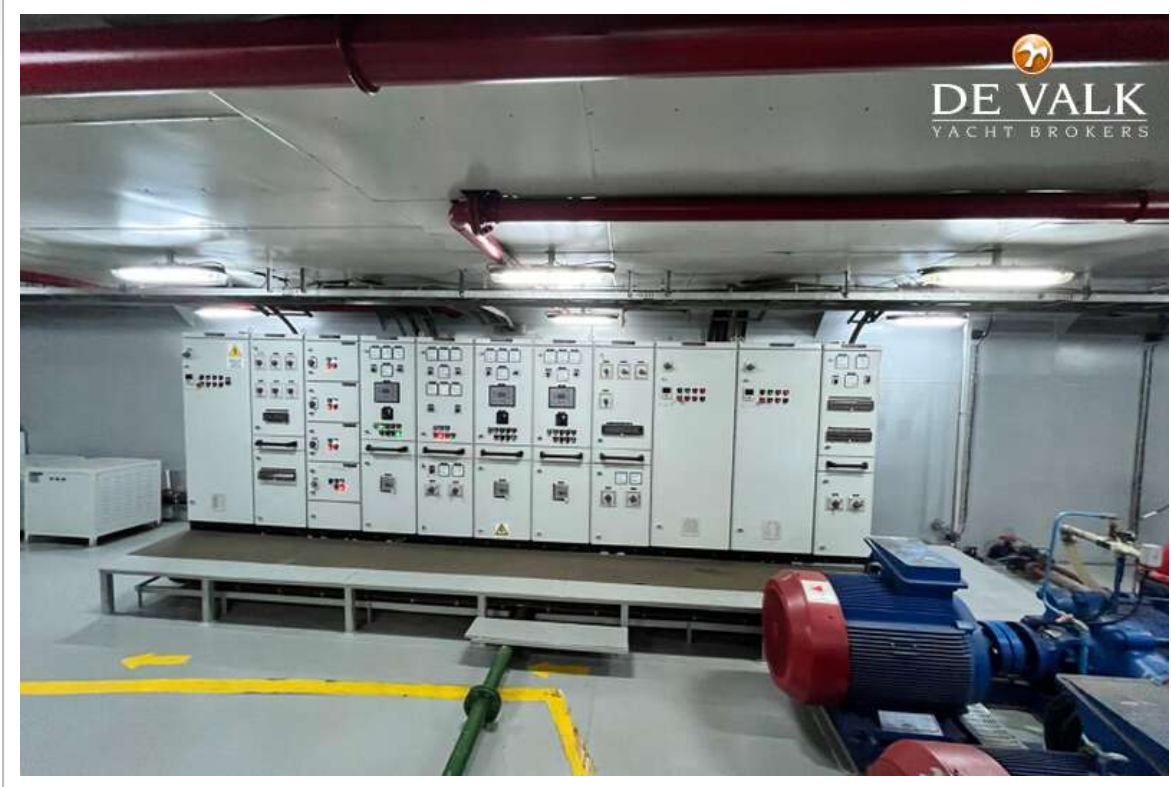




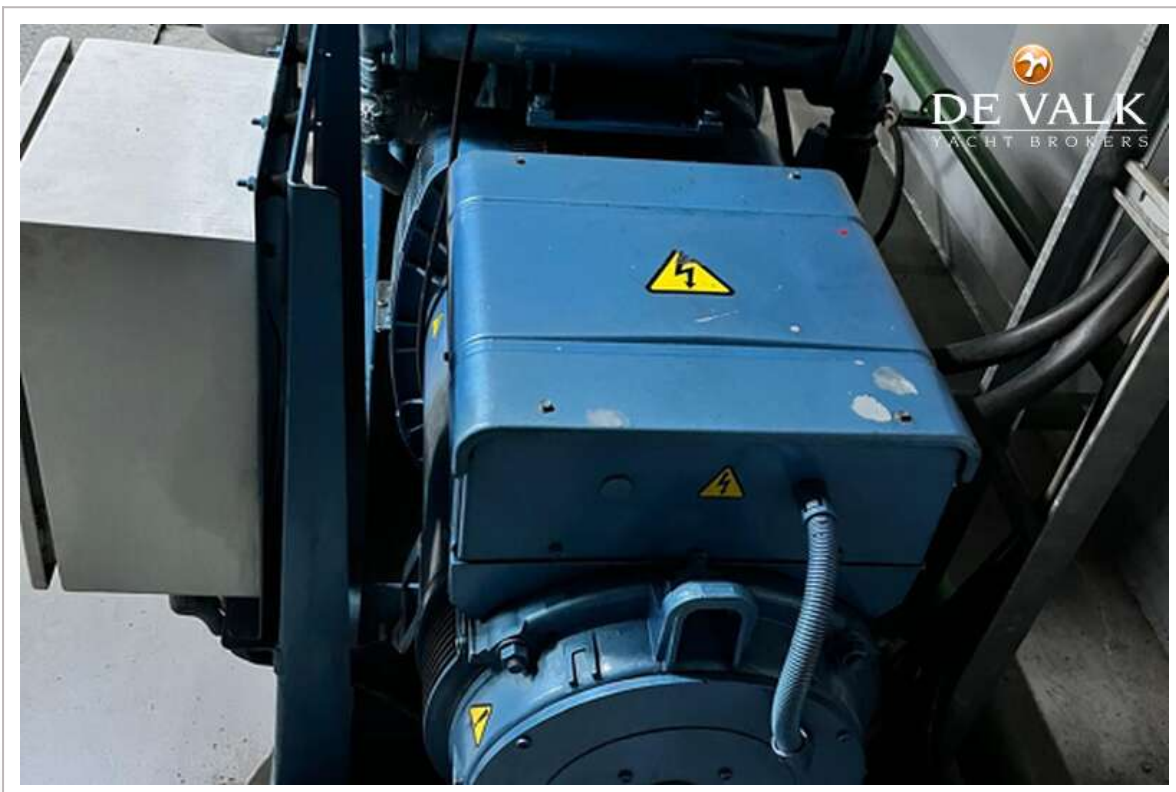
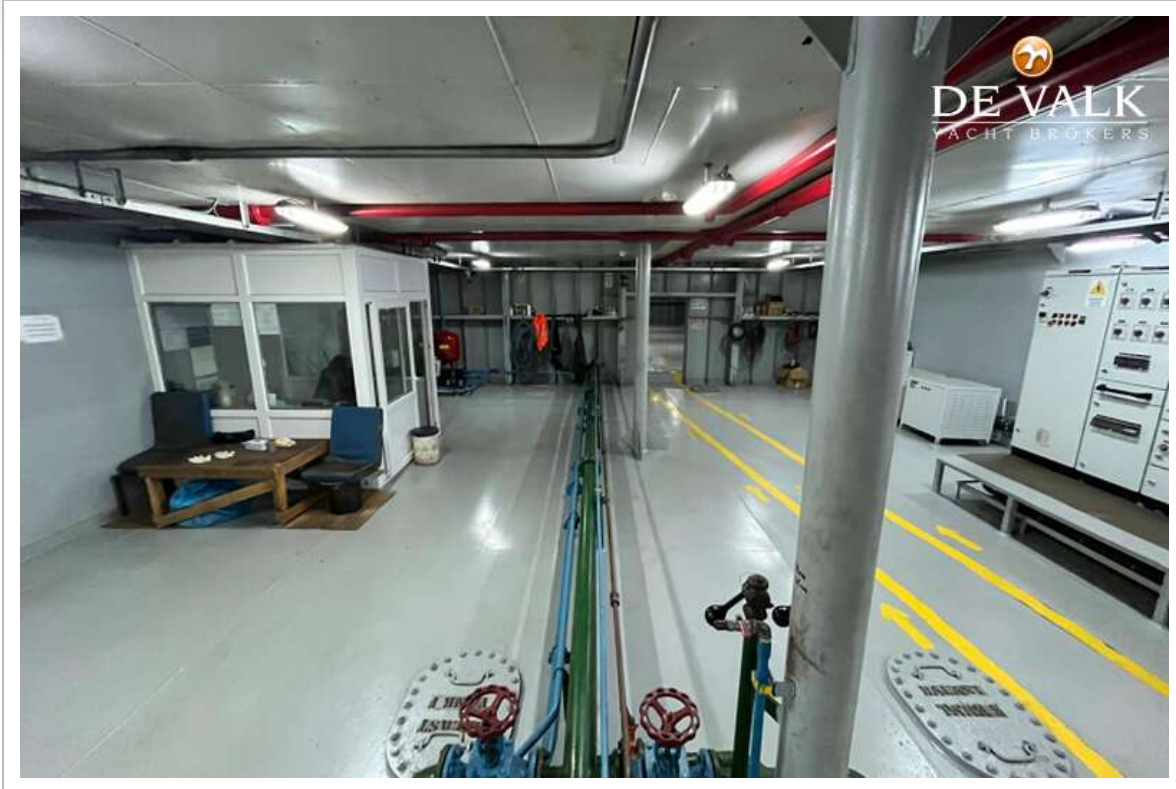
# RO/RO PAX DOUBLE ENDED FERRY 90



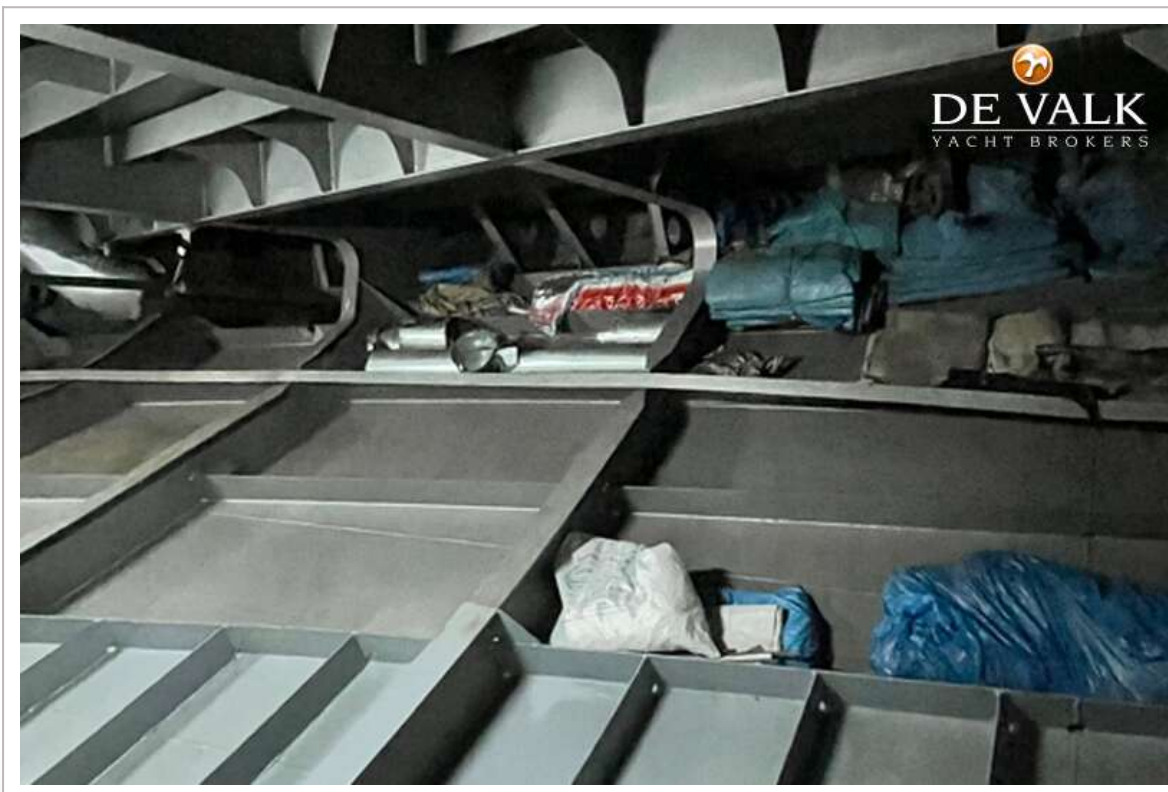
# RO/RO PAX DOUBLE ENDED FERRY 90



# RO/RO PAX DOUBLE ENDED FERRY 90

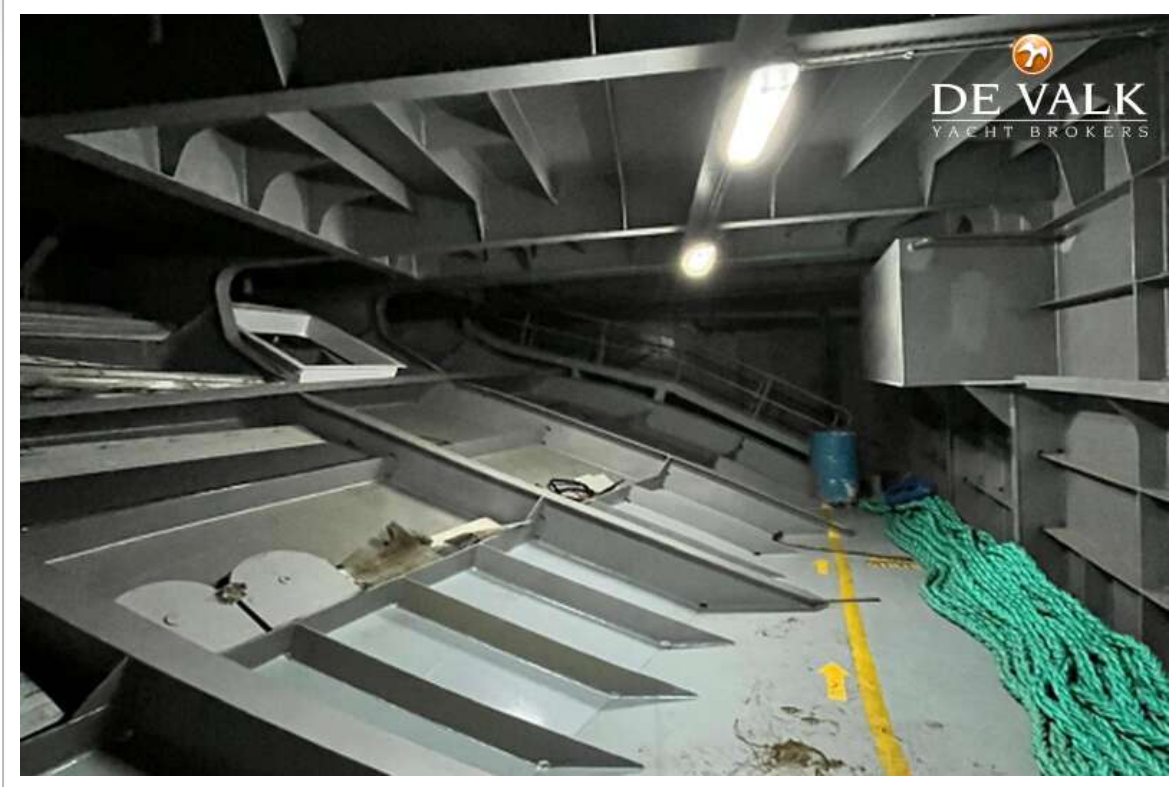


# RO/RO PAX DOUBLE ENDED FERRY 90

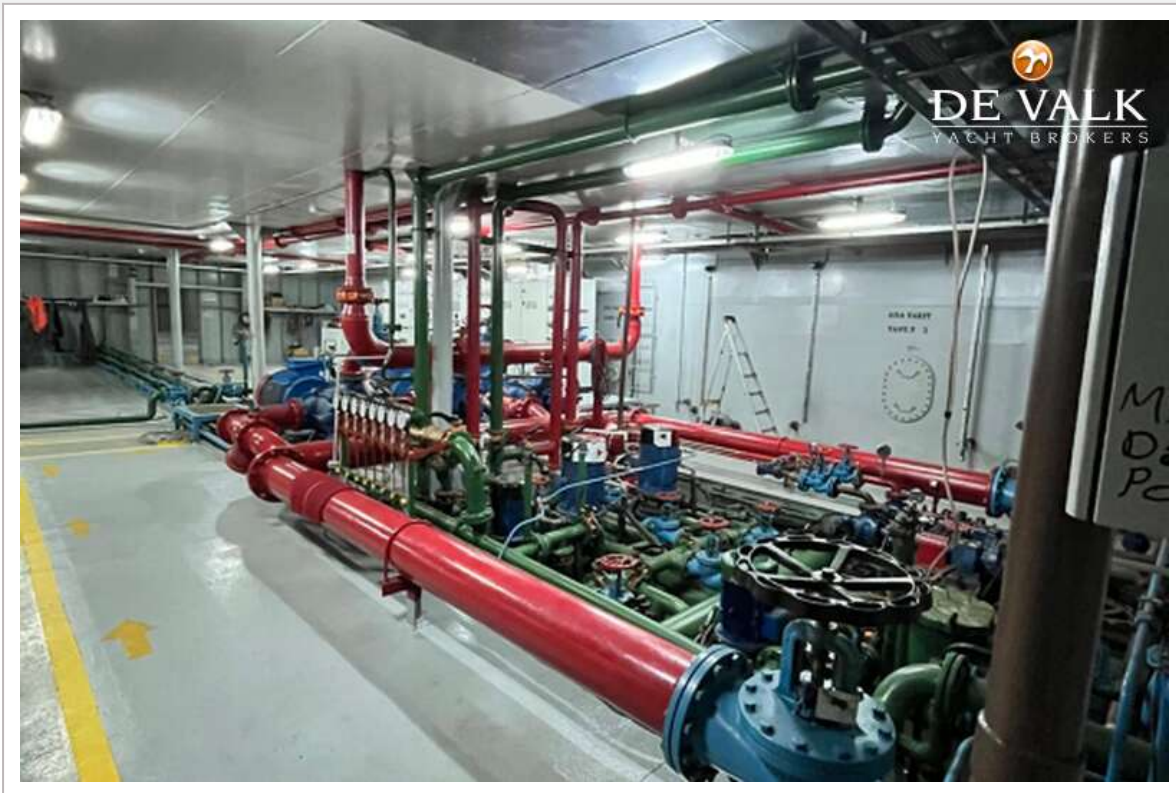


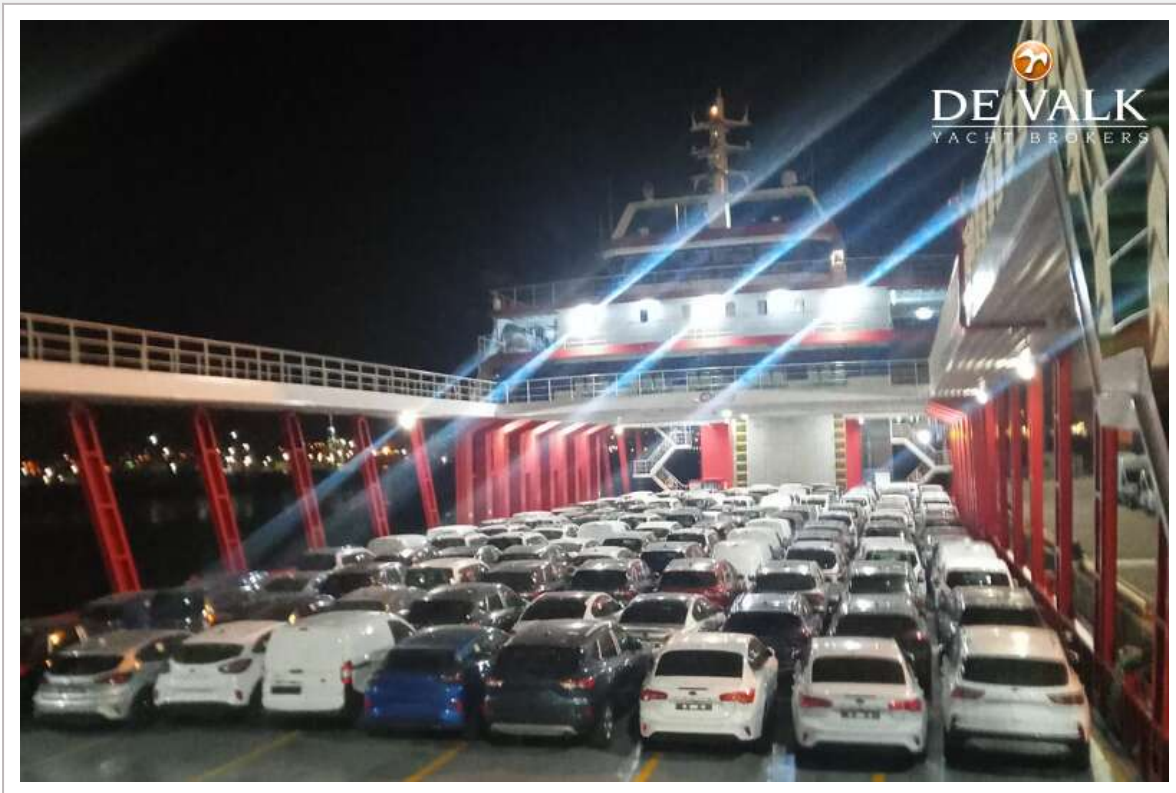


# RO/RO PAX DOUBLE ENDED FERRY 90



# RO/RO PAX DOUBLE ENDED FERRY 90







# RO/RO PAX DOUBLE ENDED FERRY 90



DE VALK  
YACHT BROKERS

