



## HANSE 445



**DE VALK**  
YACHT BROKERS

## KOMMENTARE DES MAKLERS

Hanse 445 "Argo", built in 2011 by Hanse Yacht AG and designed by Judel/vrolijk & co + Hanse Yachts Design. Saloon with galley, owners cabin in front with private shower and toilet, two double cabins and shared bathroom. A lot of recent maintenance like: new standing rigging from 2024, saildrive seal from 2024, Sprayhood and cockpit cover from 2024, 2 service batteries from 2024, mainsail and jib from 2023 etc. Easy sailing due her inmast furling, furling self tacking jib and Lewmar electric whiches. Make an appointment to view "Argo" and maybe you will start new adventures with her shortly?

*Arne Doodeman*

## TECHNISCHE DATEN

<b>Maße</b>	13.52 x 4.38 x 2.25 (m)	<b>Werft</b>	Hanse Yachts AG
<b>Baujahr</b>	2011	<b>Kabinen</b>	3
<b>Material</b>	GFK	<b>Kojen</b>	6
<b>Motor(en)</b>	1 x Volvo Penta D2-75 F diesel	<b>PS/kW</b>	75.00 (PS), 55.20 (kW)
<b>Angebotspreis</b>	€ 229.000 (MwSt. Bezahlt)	<b>Liegeplatz</b>	contact Monnickendam

## KONTAKT

<b>Verkaufsbüro</b>	De Valk Monnickendam B.V.	<b>Telefon</b>	+31 (0)299 65 63 50
<b>Adresse</b>	Hoogedijk 6 1145 PM Katwoude NL	<b>E-Mail</b>	monnickendam@devalk.nl

## HAFTUNGS AUSSCHLUSS

Diese Angaben erfolgen nach bestem Wissen, können jedoch nicht garantiert werden.



## ALLGEMEIN

<b>Modell</b>	HANSE 445
<b>Typ</b>	Segelyacht
<b>Rumpflänge (m)</b>	13,52
<b>Wasserlinienlänge (m)</b>	12,20
<b>Breite (m)</b>	4,38
<b>Tiefgang (m)</b>	2,25
<b>Baujahr</b>	2011
<b>Werft</b>	Hanse Yachts AG
<b>Land</b>	Deutschland
<b>Entwerfer</b>	Judel/vrolijk & co + Hanse Yachts Design
<b>Gewicht (t)</b>	11,3
<b>Ballast (Ton)</b>	Approx. 3.500kg
<b>CE Norm</b>	A
<b>Rumpfmateriale</b>	GFK
<b>Rumpffarbe</b>	Weiß
<b>Rumpfform</b>	Rundspant
<b>Art Kiel</b>	Flossen Kiel mit Wulst
<b>Material Aufbauten</b>	GFK
<b>Stossliste</b>	Teak with stainless steel strip
<b>Deckmaterial</b>	GFK
<b>Deck Finish</b>	Teak
<b>Deck Finish Aufbauten</b>	Antirutsch Belag
<b>Pflicht Bedeckung</b>	Teak
<b>Antifouling (Jahr)</b>	2024, will be renewed spring 2026
<b>Decks Luke</b>	8x
<b>Treibstofftank (Liter)</b>	Edelstahl - Approx. 220 litre
<b>Füllstandsanzeige (Treibstofftank)</b>	Via the digital display in the cupboard near the chart table.
<b>Trinkwassertank (Liter)</b>	Kunststoff - Approx. 450 litre
<b>Füllstandsanzeige (Trinkwasser)</b>	Via the digital display in the cupboard near the chart table.
<b>Fäkaelien Tank (Liter)</b>	Kunststoff - 2 x approx. 30 litre



<b>Füllstandsanzeige (Fakaelientank)</b>	Via the digital display in the cupboard near the chart table
<b>Radsteuerung</b>	Kabelsteuerung - Double wheel steering in the cockpit
<b>Aussen Steuerung</b>	Jefa double steering system
<b>Not-Pinne</b>	ja
<b>Weitere Info</b>	Retractable mooring cleats
<b>Weitere Info</b>	Large storage in the bow

## UNTERKUNFT

<b>Kabinen</b>	3
<b>Kojen</b>	6
<b>Innen</b>	Light modern interior
<b>Einteilung</b>	Owners cabin with French berth in the front, with wardrobes and ensuite shower and toilet room. Saloon with roundseat group, chart table and galley. Shared bathroom with shower/toilet/washbowl. Two double cabins with wardrobe in the stern.
<b>Fussboden</b>	Holzabdruck Light coloured floor
<b>Offenen Cockpit</b>	ja
<b>Salon</b>	ja
<b>Heizung</b>	Diesel Heißluft - Eberspacher D4, remote control via mobile phone possible.
<b>Heizung 2</b>	Diesel Heißluft -Eberspacher D4 (overhauled), remote control via phone possible.
<b>Kartentisch</b>	ja
<b>Schiebetür zum Cockpit</b>	ja
<b>Kombüse</b>	ja
<b>Arbeitsfläche</b>	Corian - Black coloured corian worktop
<b>Spülbecken</b>	Edelstahl
<b>Herd</b>	Gas - 2 burner Eno
<b>Ofen</b>	Eno
<b>Mikrowelle</b>	LG Microwhave
<b>Kuhlschrank</b>	Isotherm
<b>Warmwasser System</b>	220V + Motor - Boiler



<b>Wasserdruck System</b>	elektrisch
<b>Eignerkabine</b>	Französisch Bett - Seminautic Ocean matras with topper from 03-2024.
<b>Kleiderschrank</b>	ja
<b>Badezimmer</b>	en suite
<b>Toilet</b>	Separate toilet room with washbowl in the ownerscabin.
<b>Toilette System</b>	elektrisch - Jabsco Lite Flush electric toilet
<b>Gästekabine 1</b>	Doppelbett
<b>Kleiderschrank</b>	ja
<b>Badezimmer</b>	gemeinsam
<b>Toilette</b>	Jabsco Lite Flush electric toilet
<b>Toilette System</b>	elektrisch
<b>Handwaschbecken</b>	ja
<b>Dusche</b>	ja
<b>Gästekabine 2</b>	Doppelbett
<b>Kleiderschrank</b>	ja
<b>Weitere Info</b>	Gas certificate valid till 2027.

## MASCHINEN

<b>Motoranzahl</b>	1
<b>Marke</b>	Volvo Penta
<b>Typ</b>	D2-75 F
<b>PS</b>	75
<b>kW</b>	55.20
<b>Kraftstoffart</b>	Diesel
<b>Kühlungssystem Motor</b>	indirekte Wärmetauscher
<b>Antrieb</b>	Saildrive
<b>Saildrive Dichtung</b>	New saildrive seal 06-2024
<b>Motor bedienung</b>	Seilzug Kabel
<b>Bugschraube</b>	elektrisch - RMC retractable bowthruster
<b>Propeller Typ</b>	falt - 3 bladed folding propeller



<b>Hand Bilgenpumpe</b>	Plastimo manual bilge pump in the cockpit
<b>Elektrische Bilgenpumpe</b>	ja
<b>Starterbatterie</b>	1 x AGM Technology
<b>Versorgungsbatterie</b>	2 x Victron 165Ah AGM batteries (08-2025)
<b>Batterie Monitor</b>	Victron SmartShunt IP64 for battery information on your mobile phone. Via the digital display in the cupboard near the chart table
<b>Batterie Ladegerat/Umwandler</b>	Victron MultiPlus Compact 12v/1600w/70amp
<b>Landstrom</b>	mit Kabel

## NAVIGATION

<b>Kompass</b>	Plastimo Contest 130 liquid compass
<b>Multi Control Display</b>	2x Simrad IS20 displays
<b>Tiefenanziege</b>	Via the Simrad IS20 screens
<b>Logge</b>	Via the Simrad IS20 screens
<b>UKW</b>	Vesper Cortex Smart AIS/vhf/transponder, Simrad VHF Working but not connected.
<b>Portabel UKW</b>	Vesper Cortex H1P
<b>Autopilot</b>	Simrad AP24 autopilot with Simrad IS40 controller
<b>Ruderwinkel Anzeige</b>	Visible in the screen of the autopilot
<b>Plotter/GPS</b>	Simrad MSE 12" chartplotter
<b>AIS Transponder</b>	Vesper Cortex Smart AIS/VHF/transponder
<b>Weitere Info</b>	ja

## AUSRÜSTUNG

<b>Spritzverdek</b>	Sprayhood with cockpitcover till the steeringwheels, 06-2024 by Halver Sails
<b>Kuchenbude</b>	ja
<b>Cockpit Polster</b>	ja
<b>Cockpit Tisch</b>	Teak table in the cockpit
<b>Badeplattform</b>	Folding bathing platform
<b>Badeleiter</b>	Edelstahl



<b>Anker</b>	Delta
<b>Ankerkette</b>	Stainless steel chain
<b>Ankerwinde</b>	elektrisch - Lewmar electrical windlass
<b>Ausserborder Halterung</b>	ja
<b>See Reling</b>	Draht/Seil
<b>Zupackenschiene (aufbauten)</b>	Edelstahl
<b>Seiten-Einstieg Seereling</b>	2 x
<b>Heckkorb</b>	Stainless steel
<b>Bugkorb</b>	Stainless steel
<b>Radar Reflektor</b>	Trilens 12" radarreflector (2024)
<b>Fenderkissen</b>	ja
<b>Festmacher</b>	ja
<b>TV</b>	LG Smart TV
<b>Radio-CD Spieler</b>	Sony CDX-GT33U Radio/CD player
<b>Uhr - Barometer</b>	Clock and barometer

## RIGG

<b>Rig</b>	Fraktionell
<b>Stehendes Gut</b>	Dyform - Dryform standing rigging from 08-2024 by Tuned Rigs & Ropes
<b>Marke Mast</b>	Sparcraft
<b>Material Mast</b>	Aluminium
<b>Salings</b>	2 x spreaders
<b>Großsegel</b>	Sail Select: High preformance cruising mainsail, DCXi 11.3OZ licht grijs, Approx. 52m2, tri-radiaal gesneden, incl. Sunbrella cadet grey UV bescherming op de schoothoek, inmast. New 07-2023
<b>Durchelatted großsegel</b>	ja
<b>Rollgroß Anlage</b>	ja



<b>Fock</b>	- Sailselect: New High performance selftacking jib, DCXi 11.3Oz licht grijs, tri-radiaal gesneden, incl. Sunbrella cadet grey UV bescherming op de schoothoek. New 07-2023 on furling. - Sailselect selftacking jib, Off-shore/racing, 10.1 Oz tri-radiaal Challenge Newport ProRadial Dacron. New 04-2021.
<b>Rollreffanlage</b>	Selden Furlex 300 TD
<b>Code Zero</b>	ja
<b>Selbstwende Anlage</b>	ja
<b>Reff Vorrichtung</b>	Rollgross im Mast
<b>Achterstag Spanner</b>	mechanisch
<b>Baumniederholer</b>	mechanisch und Talje - Sparcraft
<b>Genua Schotwinschen</b>	Lewmar Electric



# HANSE 445



# HANSE 445



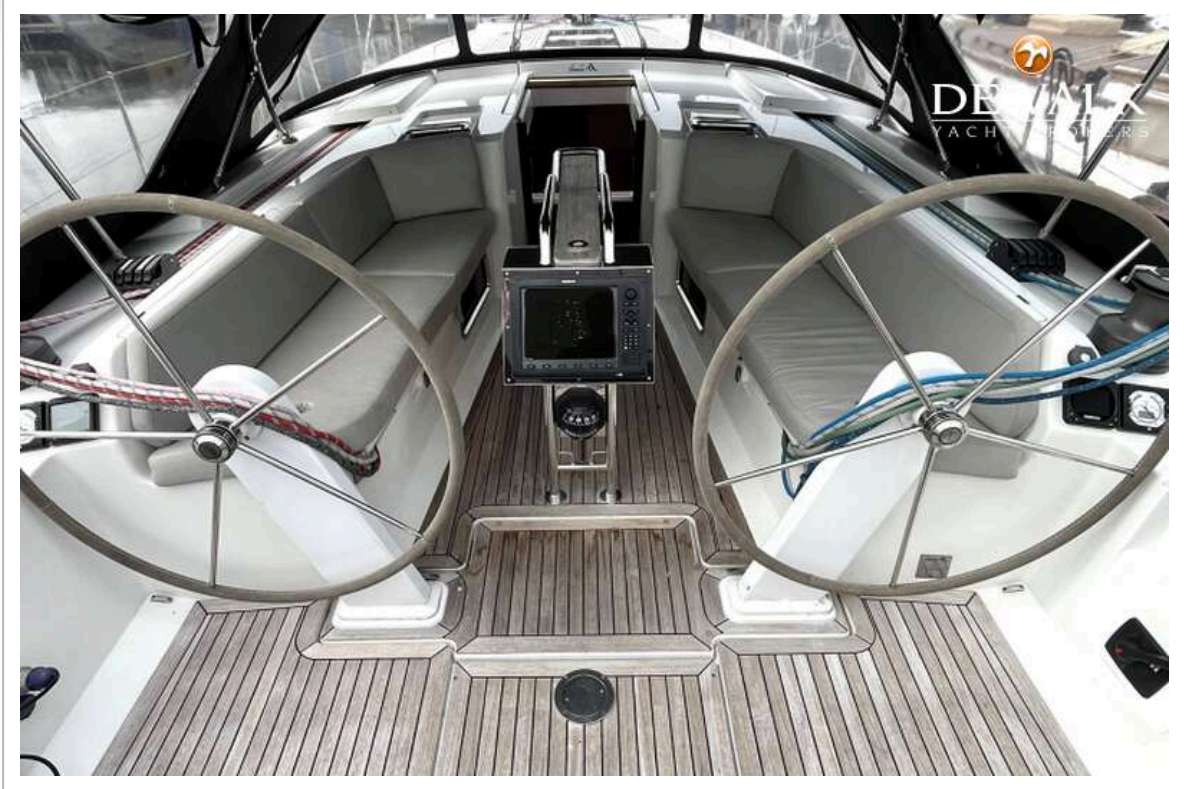
# HANSE 445



# HANSE 445



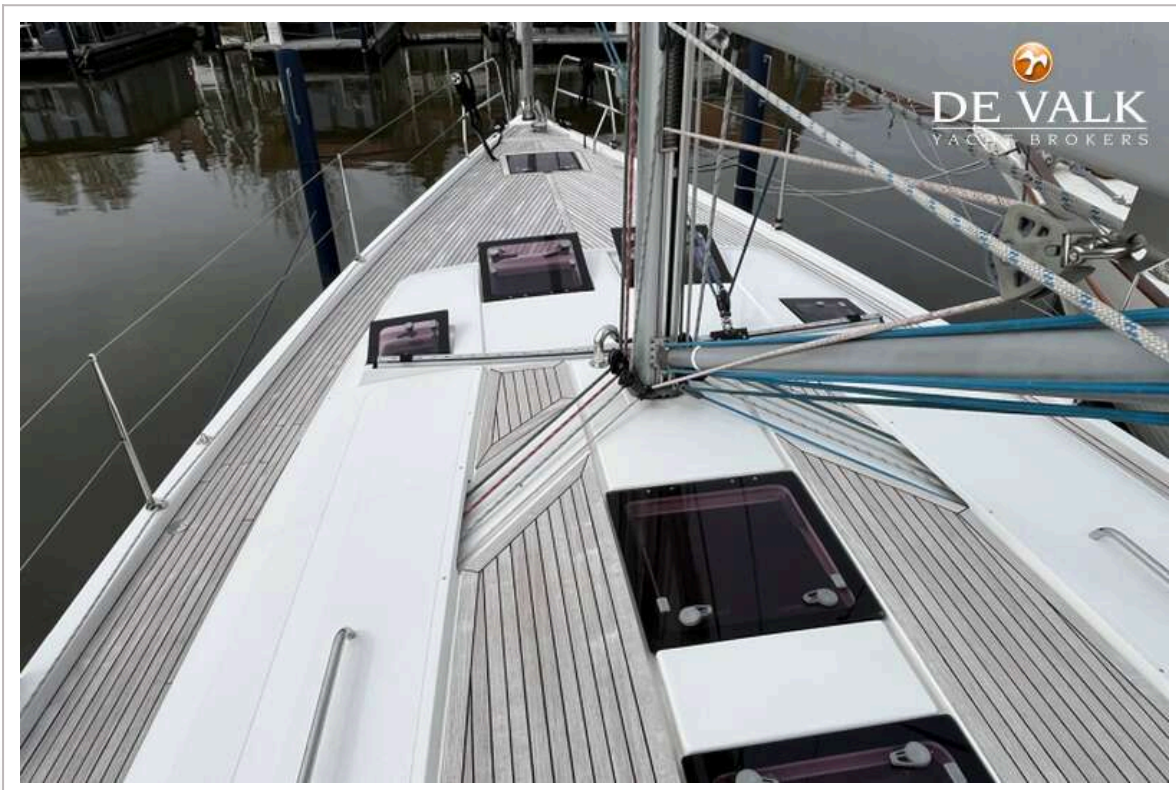
# HANSE 445



# HANSE 445



# HANSE 445



# HANSE 445



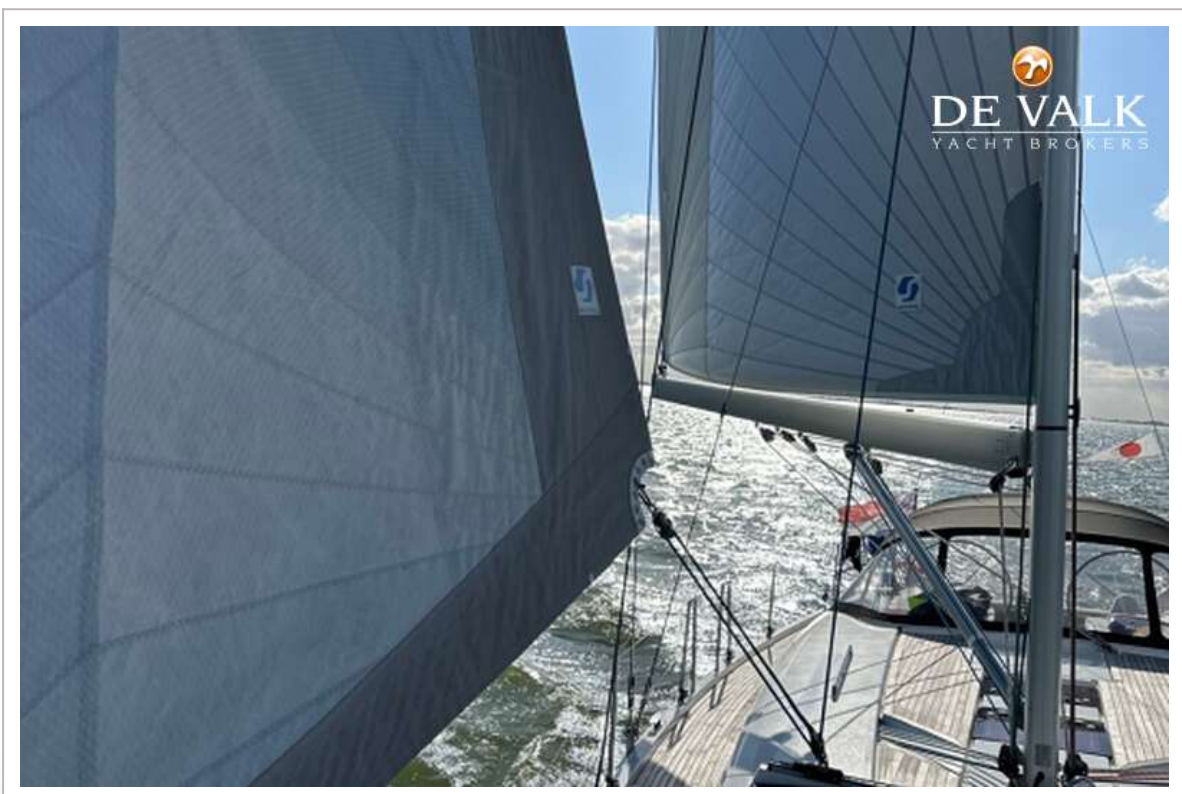
  
**DE VALK**  
YACHT BROKERS



  
**DE VALK**  
YACHT BROKERS



# HANSE 445



# HANSE 445



# HANSE 445



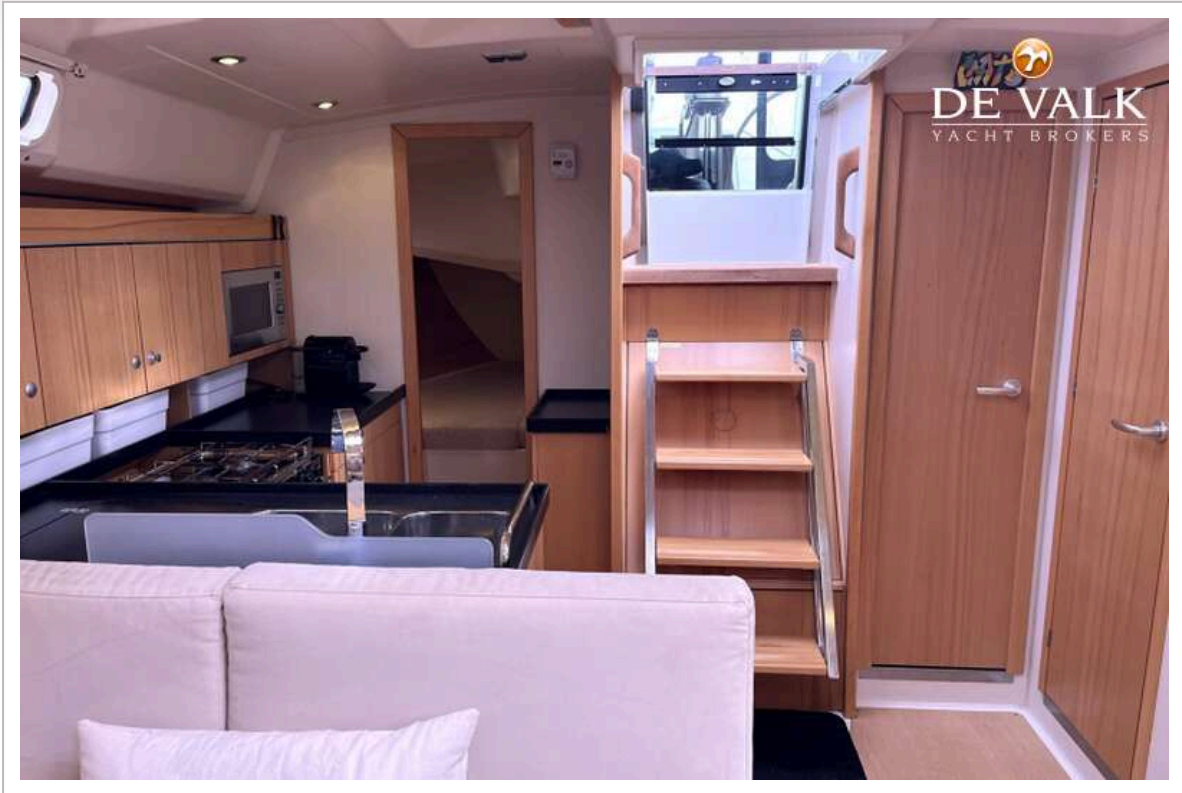
# HANSE 445



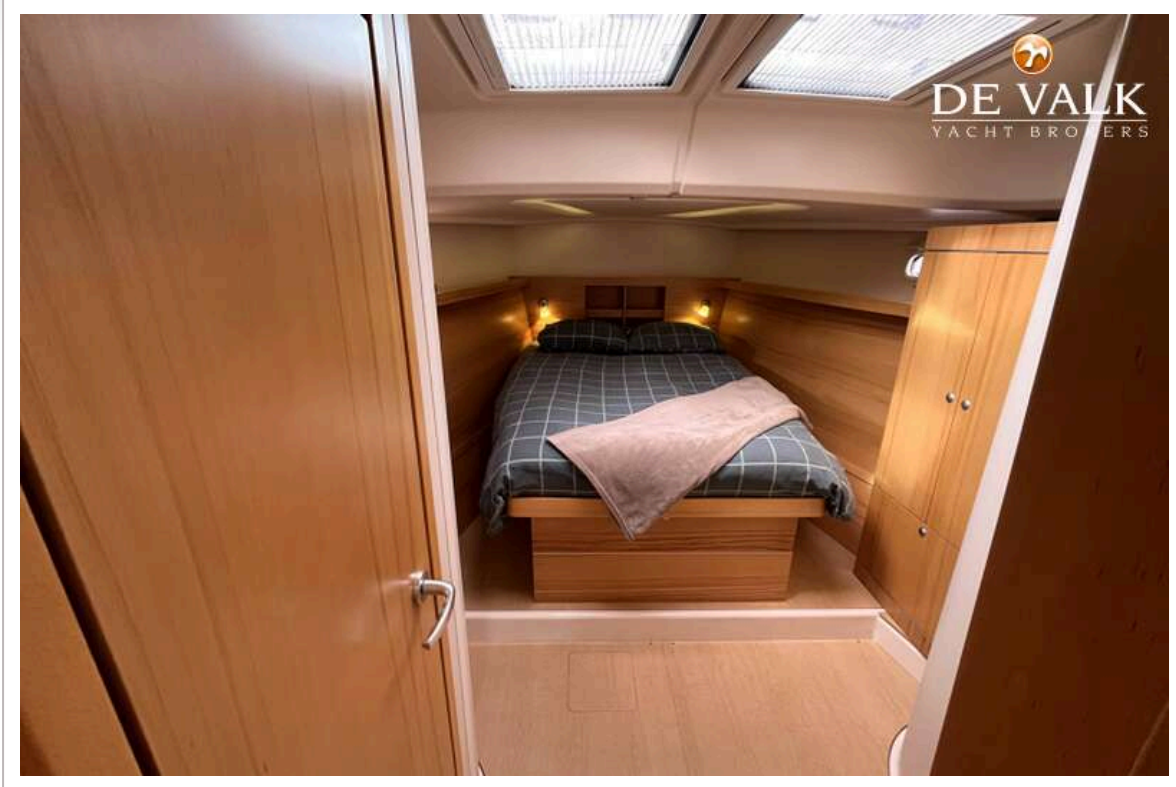
# HANSE 445



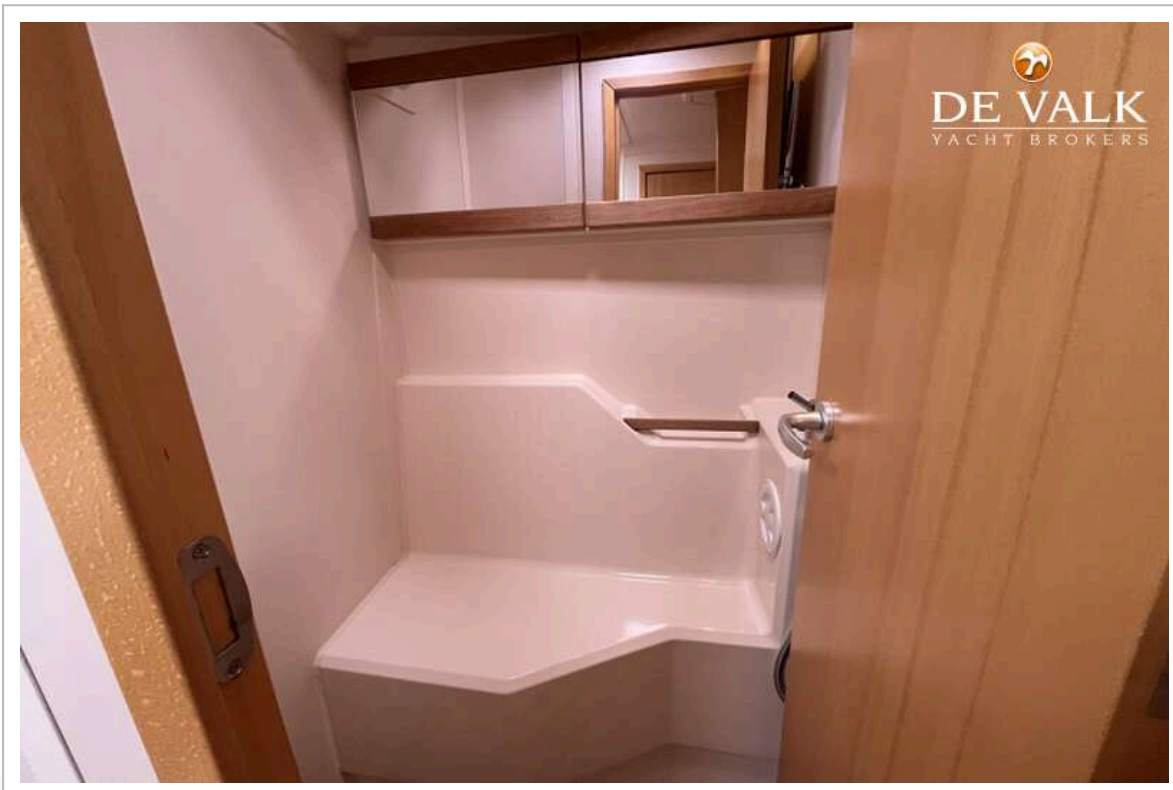
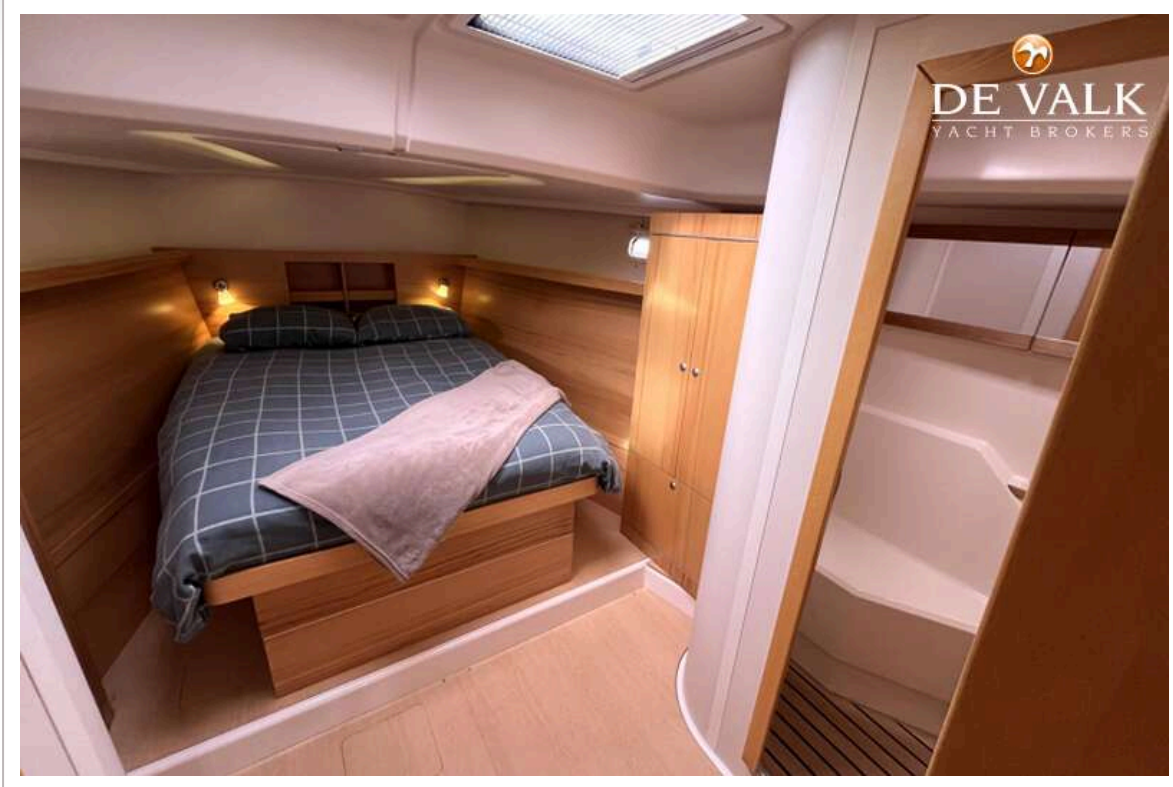
# HANSE 445



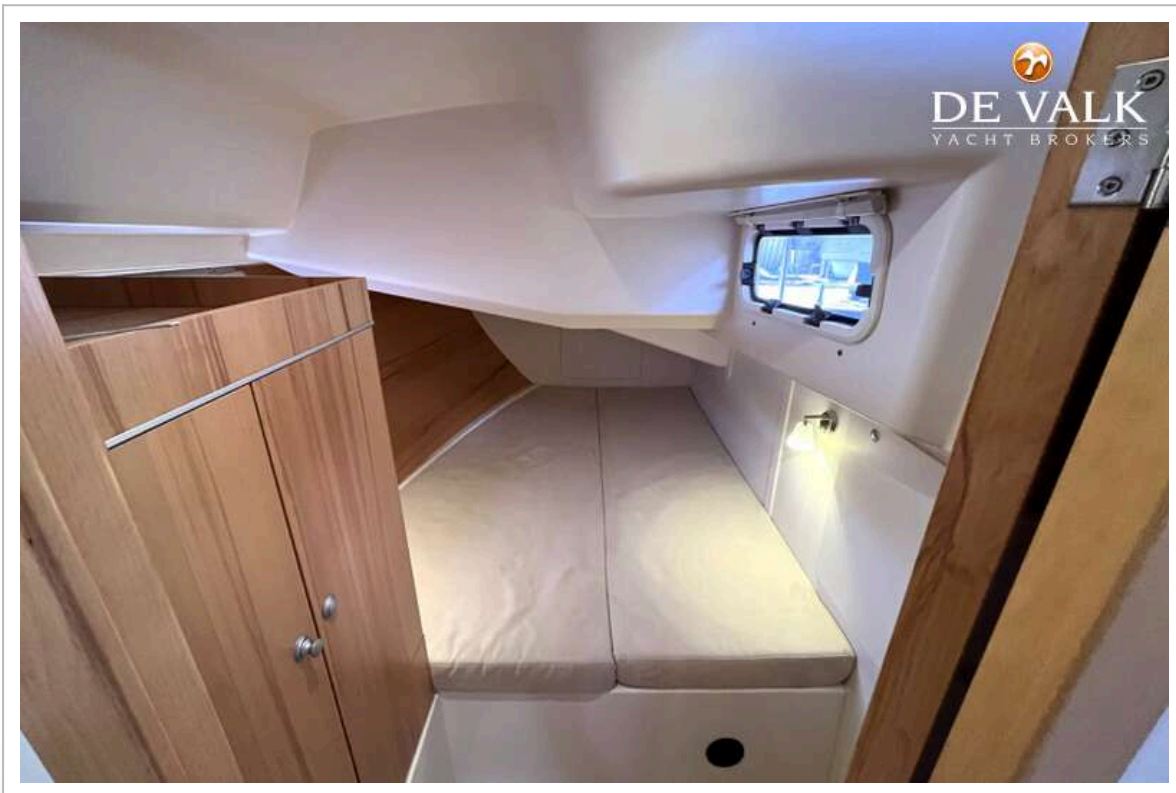
# HANSE 445



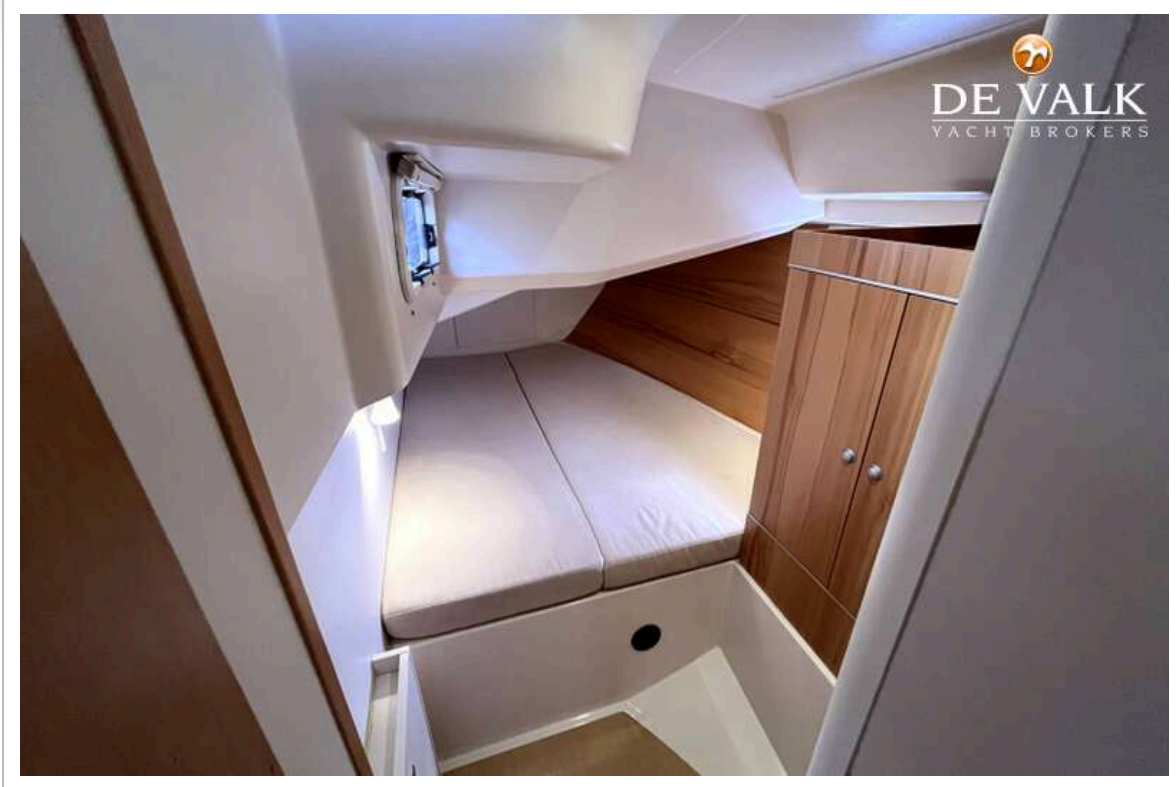
# HANSE 445



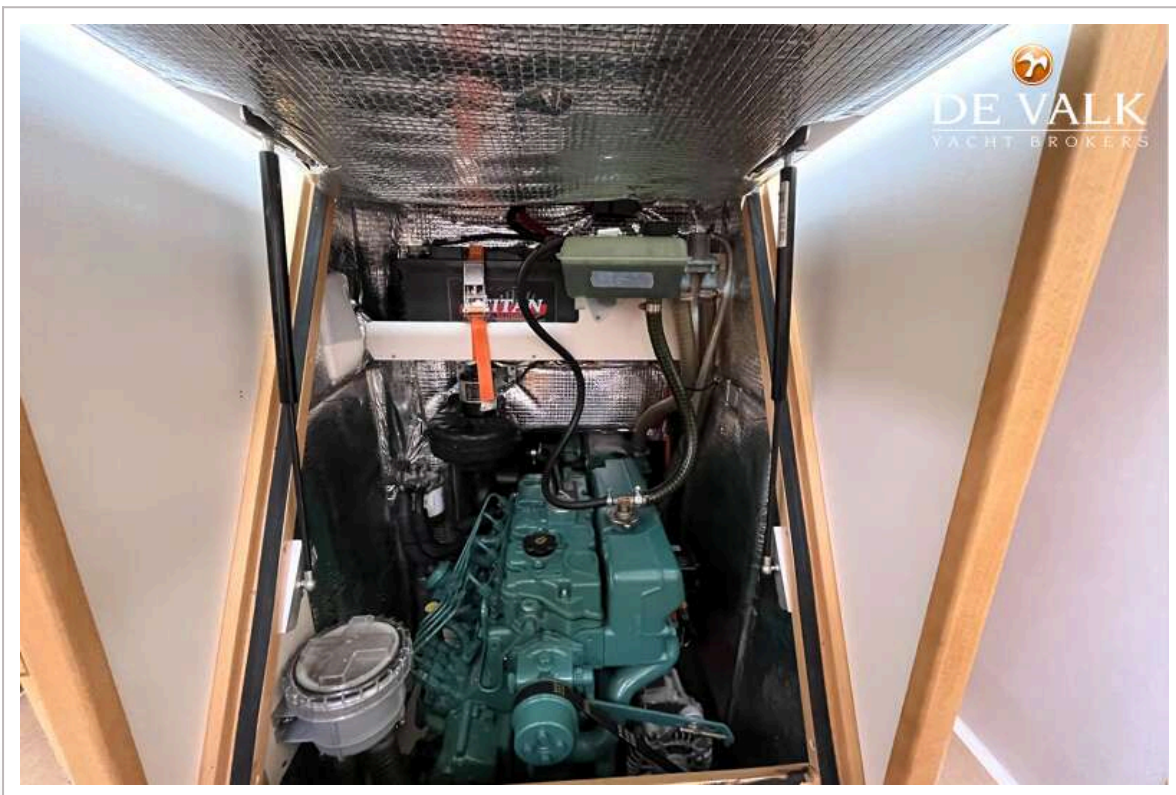
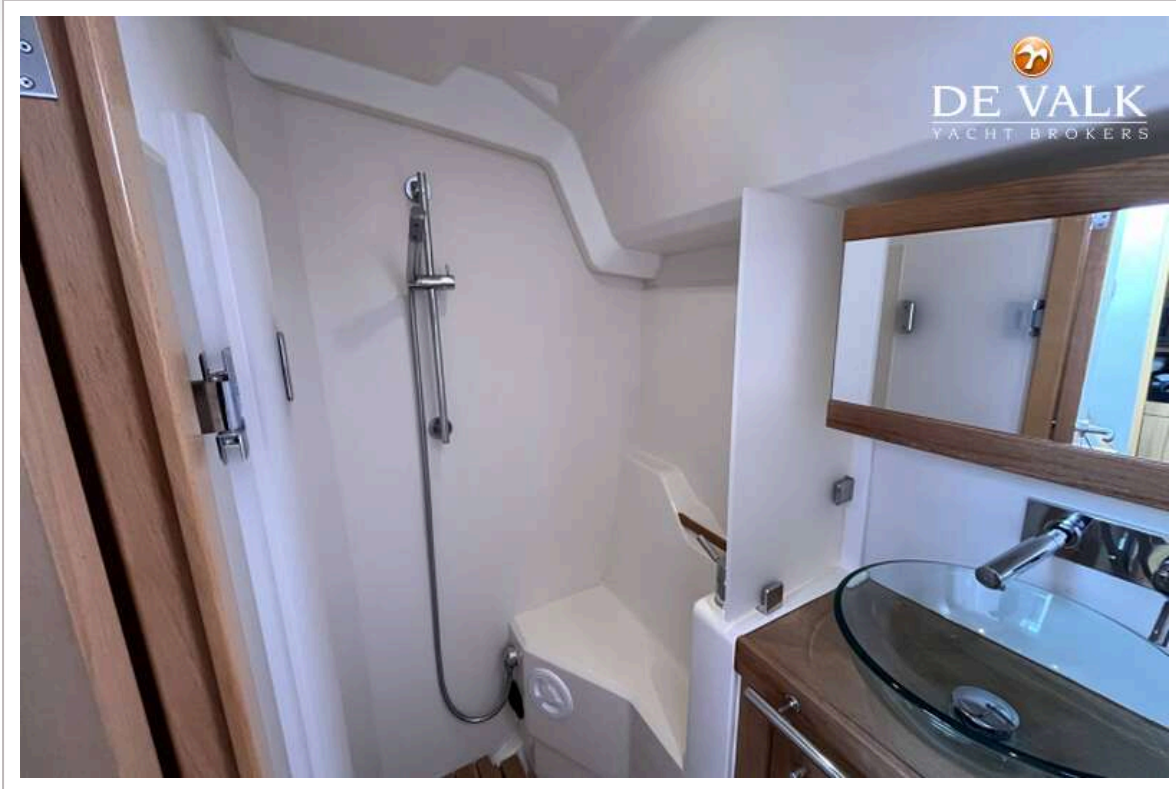
# HANSE 445



# HANSE 445



# HANSE 445



# HANSE 445

