



DE VALK
YACHT BROKERS



CUSTOM BUILT EXPLORER



DE VALK
YACHT BROKERS

KOMMENTARE DES MAKLERS

Terschelling is a 40-metre former Dutch buoy-laying vessel that has recently undergone a comprehensive conversion, completed under class, into an exclusive Arctic expedition yacht. Combining robust commercial-grade construction with a high standard of luxury, she accommodates up to 12 guests in six comfortable cabins. Ideally suited for luxury expeditions, private use or charter operations. The existing business, including its operational activities and commercial opportunities, may also be acquired, offering a unique turnkey expedition enterprise with immediate earning potential.

Hans Visser

TECHNISCHE DATEN

Maße	37.92 x 7.90 x 3.70 (m)	Werft	Zaanse scheepsbouw Maatschappij
Baujahr	1963	Kabinen	6
Material	Stahl	Kojen	12
Motor(en)	1 x Bolnes eight-cylinder diesel	PS/kW	467.00 (PS), 343.71 (kW)
Angebotspreis	€ 1.200.000 (MwSt. Mehrwertsteuerfrei)	Liegeplatz	elsewhere / nicht im Verkaufsbüro

KONTAKT

Verkaufsbüro	De Valk Hindeloopen B.V.	Telefon	+31 514 52 40 00
Adresse	Oosterstrand 1 8713 JS Hindeloopen NL	E-Mail	hindeloopen@devalk.nl

HAFTUNGS AUSSCHLUSS

Diese Angaben erfolgen nach bestem Wissen, können jedoch nicht garantiert werden.



ALLGEMEIN

Modell	CUSTOM BUILT EXPLORER
Typ	Motoryacht
Rumpflänge (m)	37,92
Breite (m)	7,90
Tiefgang (m)	3,70
Baujahr	1963
Werft	Zaanse scheepsbouw Maatschappij
Land	Niederlande
Gewicht (t)	238
Ballast (Ton)	2 x 6t 2x 5.78t
Brutto tonnage	238
Netto tonnage	71
CE Norm	NA
Rumpfmateral	Stahl
Rumpffarbe	Schwarz
Rumpfform	Rundspant
Material Aufbauten	Stahl
Deckmaterial	Stahl
Deck Finish	gemalt And teak
Deck Finish Aufbauten	gemalt
Fenster Einfassung	Aluminium And brass
Fenster Material	Sicherheitsglas
Isolation	Insulation comprises 10 mm foam board + layer of SuperFOIL
Treibstofftank (Liter)	Total capacity 50,420 ltr. in 4 tanks
Treibstof Tagedstank (Liter)	ME 500 ltr. generator daytank 250 ltr.
Füllstandsanzeige (Tagedstank)	Both with Sightglass
Trinkwassertank (Liter)	3 tanks total capacity 34.47t
Radsteuerung	hydraulik
Innerhalb Steuerung	ja
Not-Pinne	ja



UNTERKUNFT

Kabinen	6
Kojen	12
Mannschaftskabine	4x Crew cabin + 1x Guide cabin
Mannschaftskojen	7
Innen	Traditioneel
Achterdeck	ja
Ruderhaus	ja
Decksalon	ja
Salon	ja
Standhöhe Salon (m)	2 mtr
Heizung	Type ?????
Navigation Zenter	ja
Kartentisch	ja
Kombüse	komplette Edelmetal
Arbeitsfläche	Edelmetal
Spülbecken	Edelmetal
Herd	Induktie Buffalo CU558 4 Zone Hob
Kuhlschrank	Beko 252 ltr.
Gefrier Truhe	Beko 250 ltr.
Warmwasser System	2x boiler totaal 600 ltr.
Wasserdruk System	ja
Gästekabine 1	Zwei Einzelbetten totaal 6 hutten voor gasten
Länge Bett (m)	2 mtr.
Kleiderschrank	ja
Badezimmer	en suite
Toilette	ja
Toilette System	vakuum
Handwaschbecken	ja
Dusche	ja
Mannschaftskabine(n)	5



Toilette (Mannschaft)	2x
Toilette System	vakuum
Handwaschbecken	ja
Dusche (Mannschaft)	1x
Waschmaschine	Hoover
Trockner	Hoover

MASCHINEN

Motoranzahl	1
Marke	Bolnes
Typ	Eight-cylinder
PS	467
kW	343.71
Kraftstoffart	Diesel
Marschgeschwindigkeit (Kn)	9
Kühlungssystem Motor	indirekte Wärmetauscher
Antrieb	Schraubenwelle
Motor bedienung	mechanisch
Gewende getriebe	hydraulic
Exhaust	wassergekühlt
Propeller Typ	fest
Propellerblätter	3
Material Propellerwelle	Edelstahl
Propellerwelle schmierung	Öl
Elektrische Bilgenpumpe	2 pickups in ER and accommodations
Elektrische Anlage	12 / 24 / 220 and 360
Generator	Trockenauspuff Caterpillar 3056T 50 Hz - 220V
Generator 2	Trockenauspuff Kubota V3800 50Hz - 360V
Starterbatterie	ja
Generatorbatterie	Gen 1 - 2 x 100ah batteries Gen 2 - 1 x 100ah batteries
Batterie Ladegerät	Victron Skylla-TG 24v 30Amp G.M.D.S.S.



Umwandler ja

NAVIGATION

Kompass 1x
 Kompass auf der Flybridge 1x Arkas Copenhagen
 Elektrisches Kompass 1x Furuno Sc70 Satellite Compass with Furuno SC-703 antenna unit
 Tiefenanzeige Kodon CVS-1410
 UKW Icom-GM600 with Icom PS-310 DC-DC converter
 Autopilot Havant Navtron Hants
 Ruderwinkel Anzeige Svendborg Skibsværft electric Helmindicator
 GPS Furuno GP-39
 Navtex JRC NCR-300A
 AIS Transponder Furuno FA-1701 with NMEA 2000 and Furuno FA-170 display
 Navigation Beleuchtung ja
 Suchscheinwerfer ja

AUSRÜSTUNG

Anker 2x
 Ankerkette 2x 180 mtr.
 Ankerwinde hydraulik 2x
 Beiboot Inmar boats
 Ausserborder Parsun 60 hp
 Deck Kran Hydraulic crane 5 t. and 1 t.
 See Reling ja
 Seiten-Einstieg Seereling Starboard with small manual crane
 Rettungsinsel 2x Survitec ESR
 Rettungsinsel (Pers) 2x 25
 Rettungsboje 2x PainsWessex Manoverboard
 Klar Sicht Scheibe Two
 Horn ja



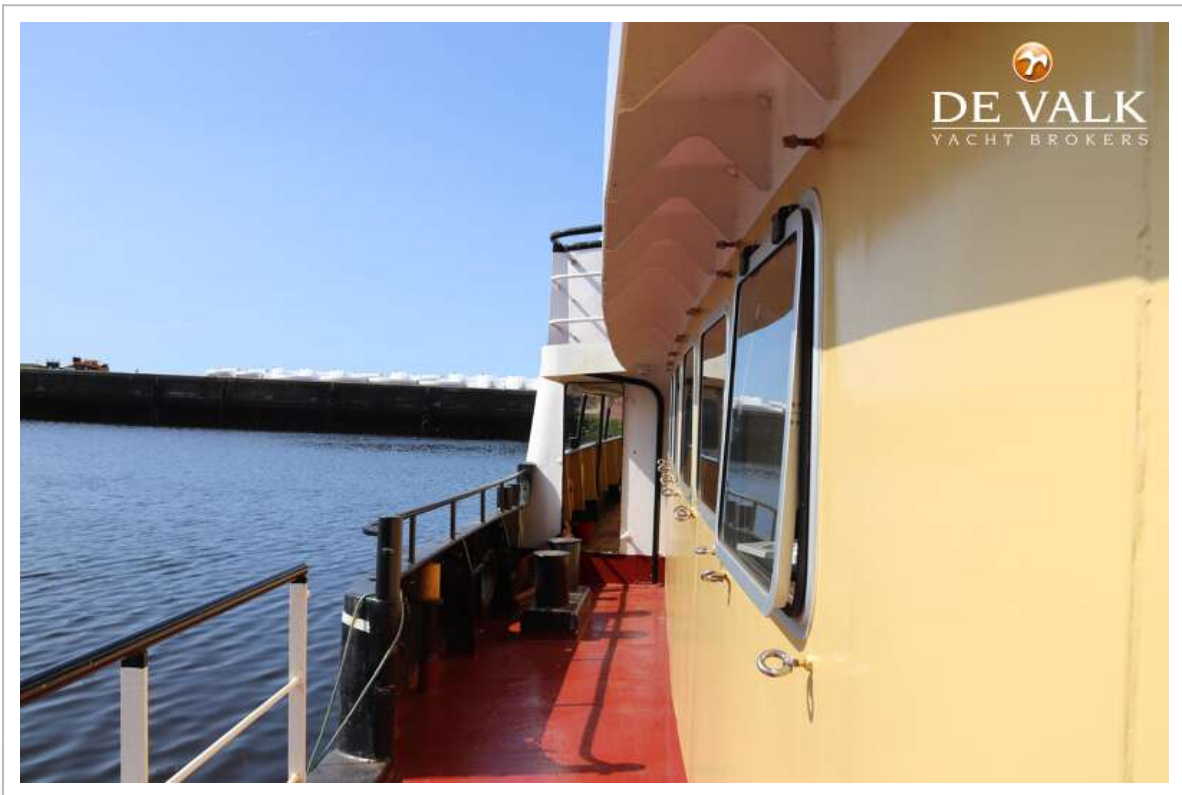
Radar Reflektor	ja
Festmacher	ja
Reserve Teilen	ja
Werkzeug	ja
Satellit	Starlink
Weitere Info	Mcmurdo Smartfind S5A AIS SART



CUSTOM BUILT EXPLORER



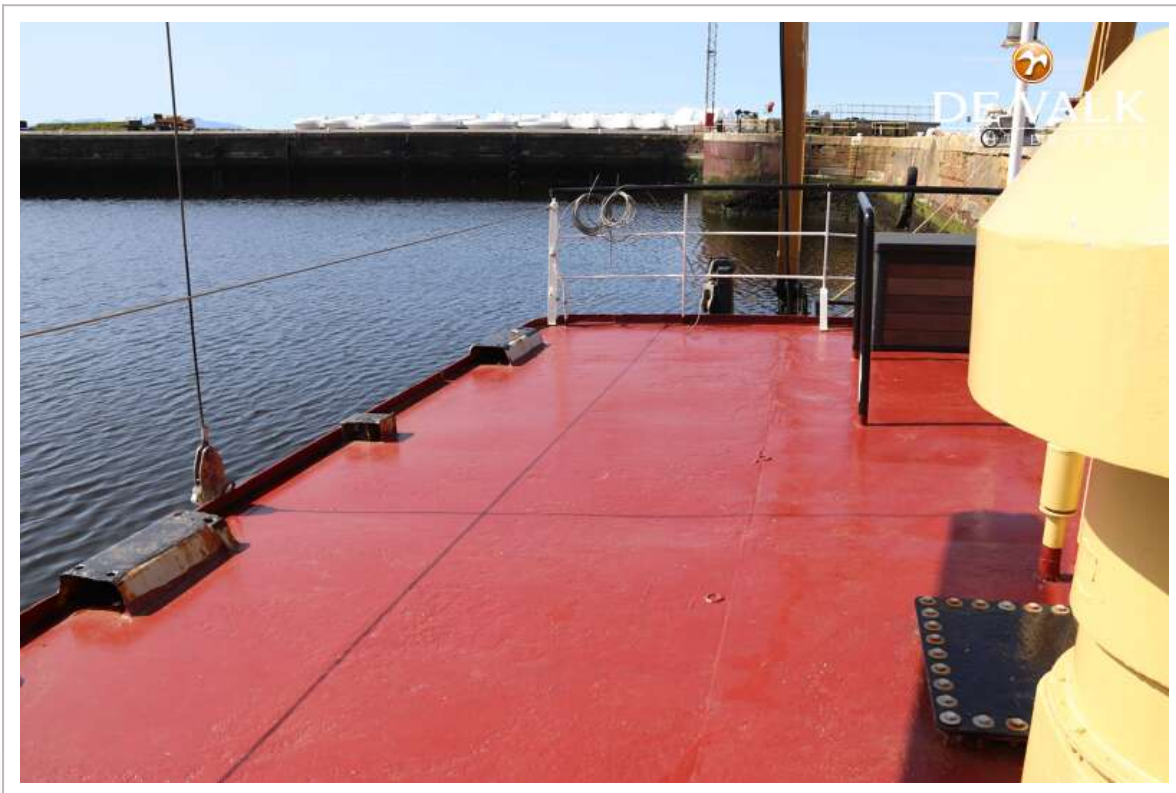
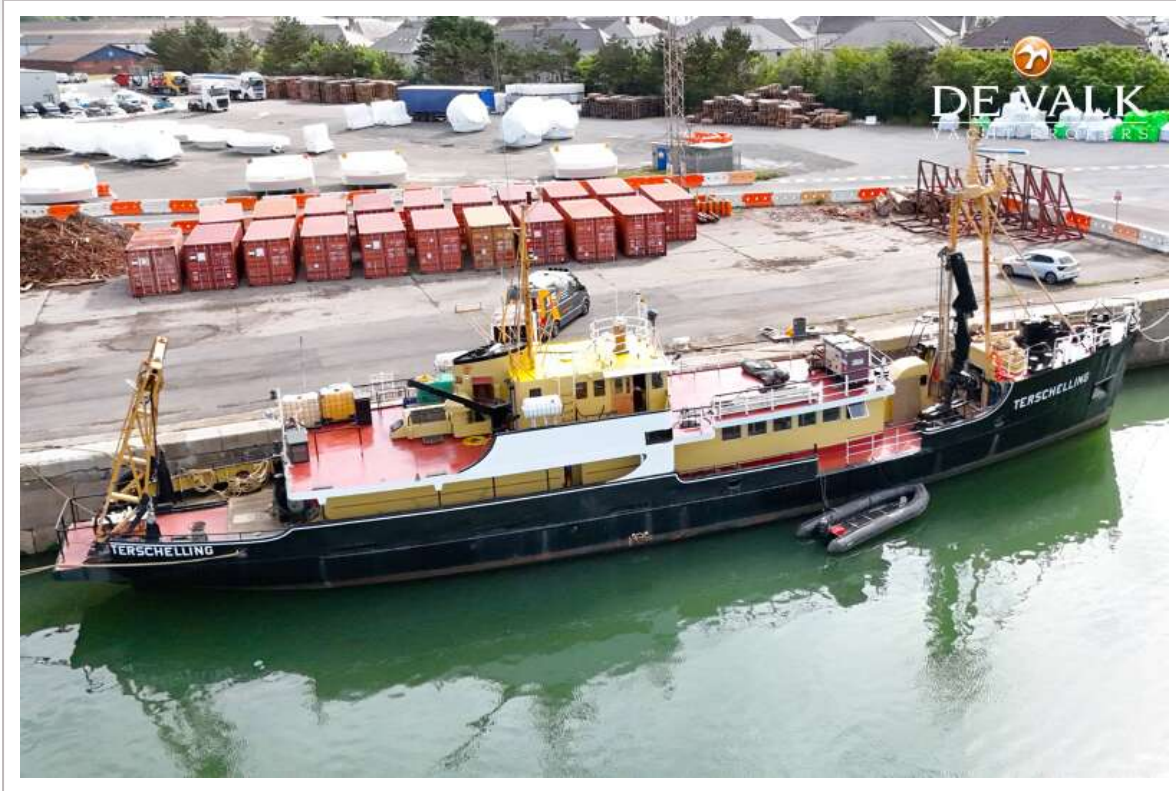
CUSTOM BUILT EXPLORER



CUSTOM BUILT EXPLORER



CUSTOM BUILT EXPLORER



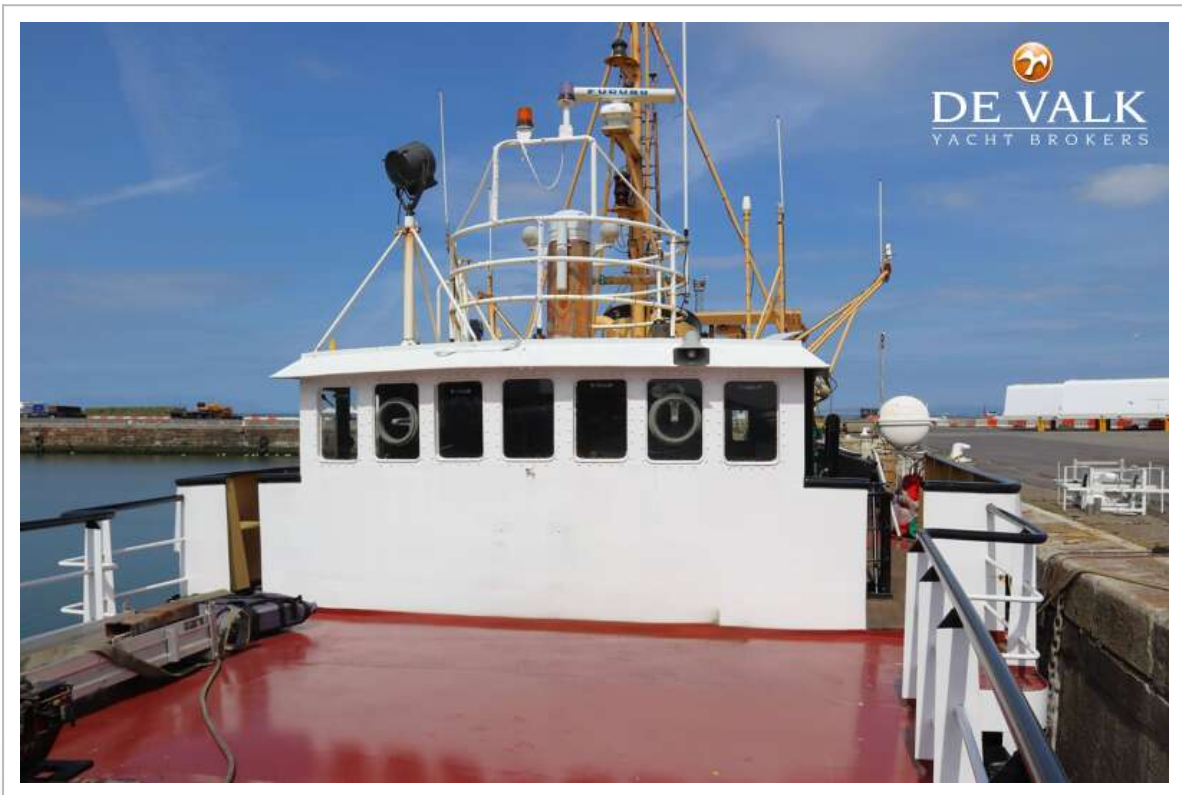
CUSTOM BUILT EXPLORER



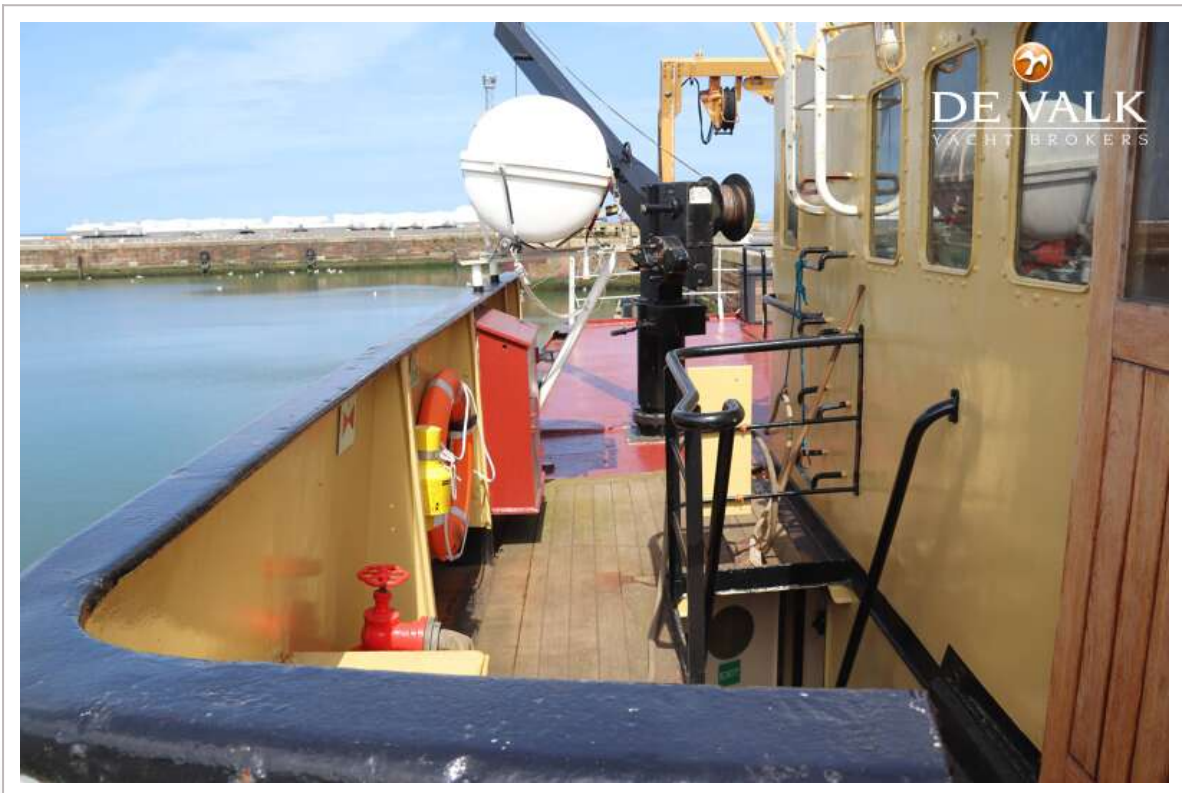
CUSTOM BUILT EXPLORER



CUSTOM BUILT EXPLORER



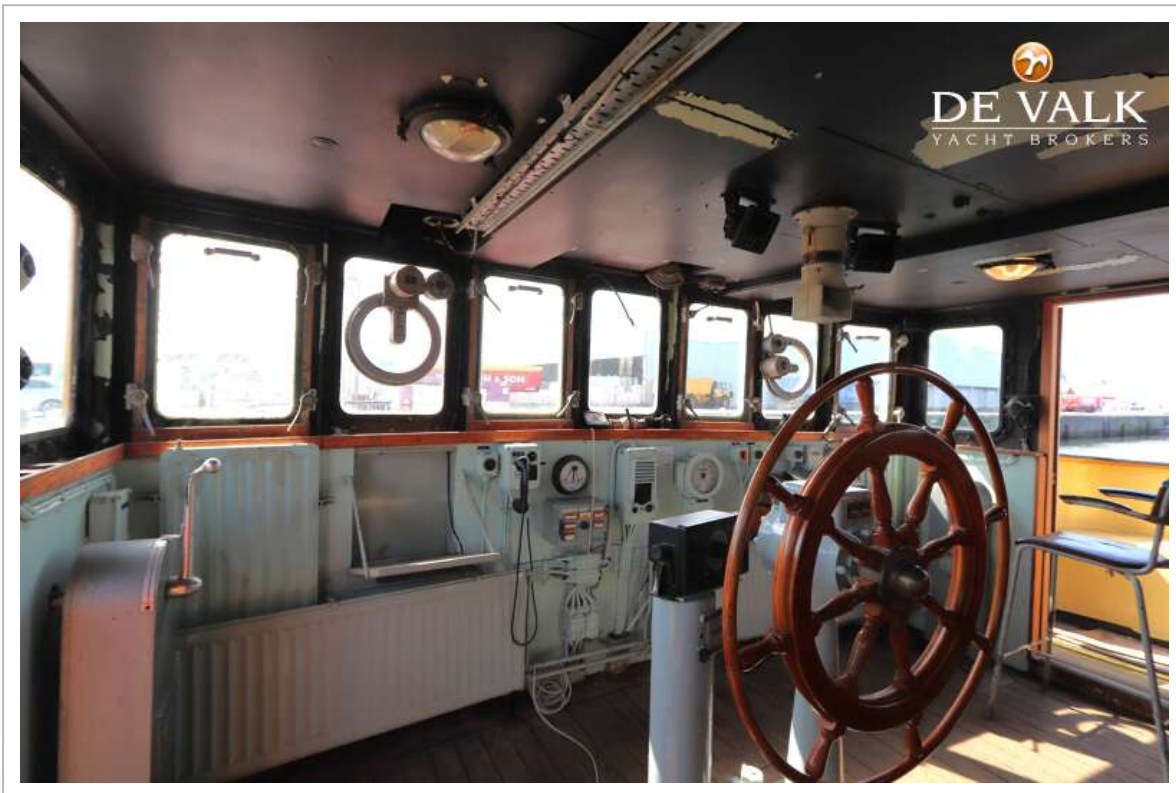
CUSTOM BUILT EXPLORER



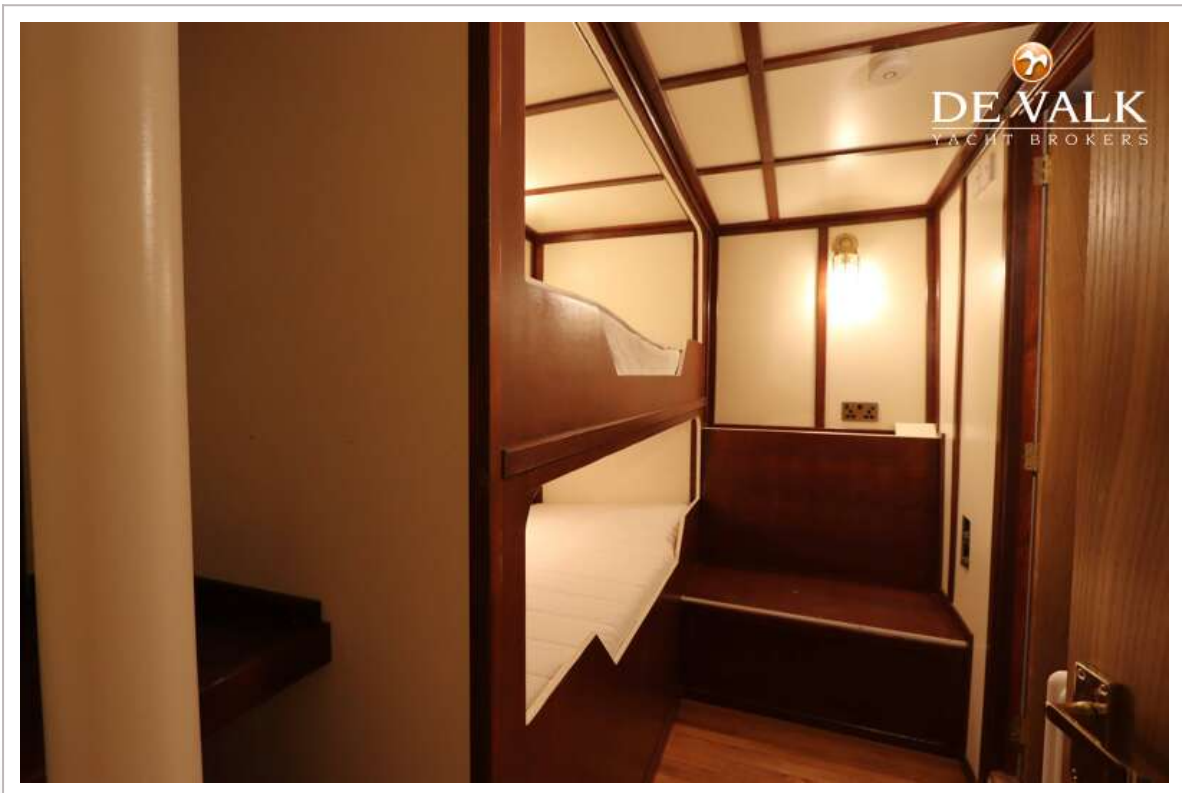
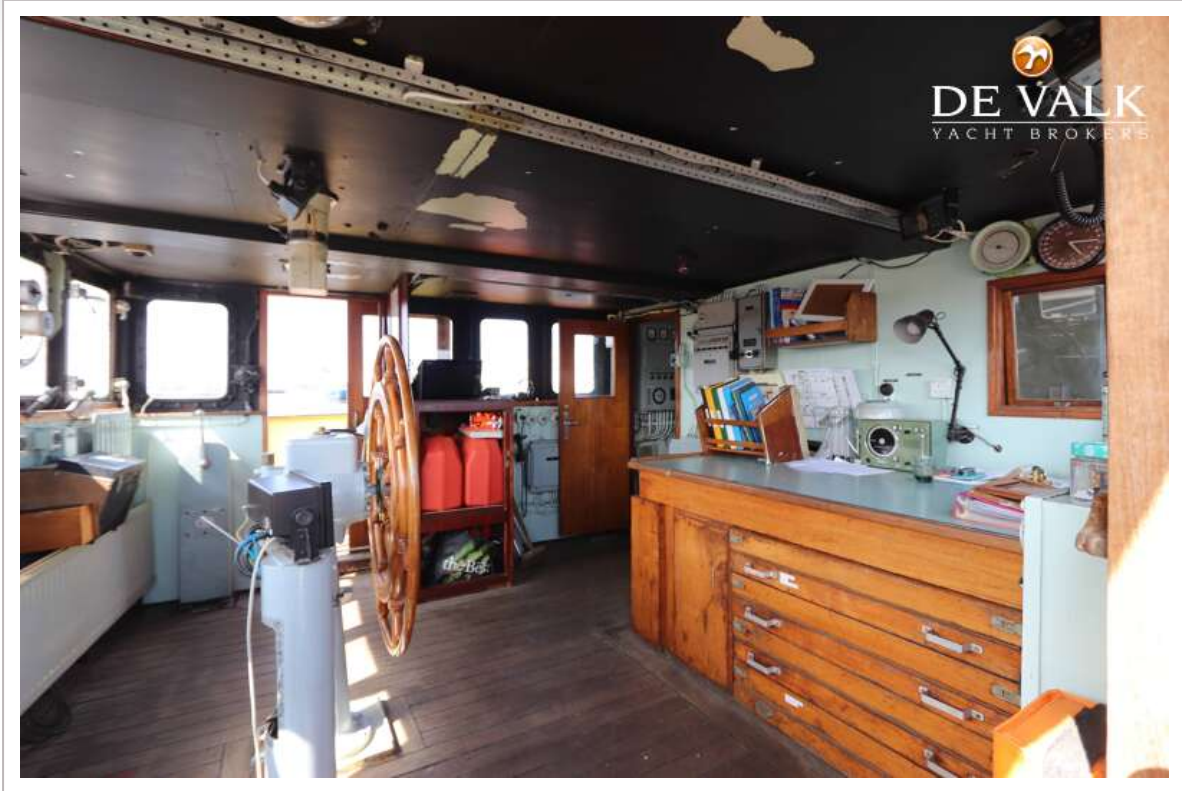
CUSTOM BUILT EXPLORER



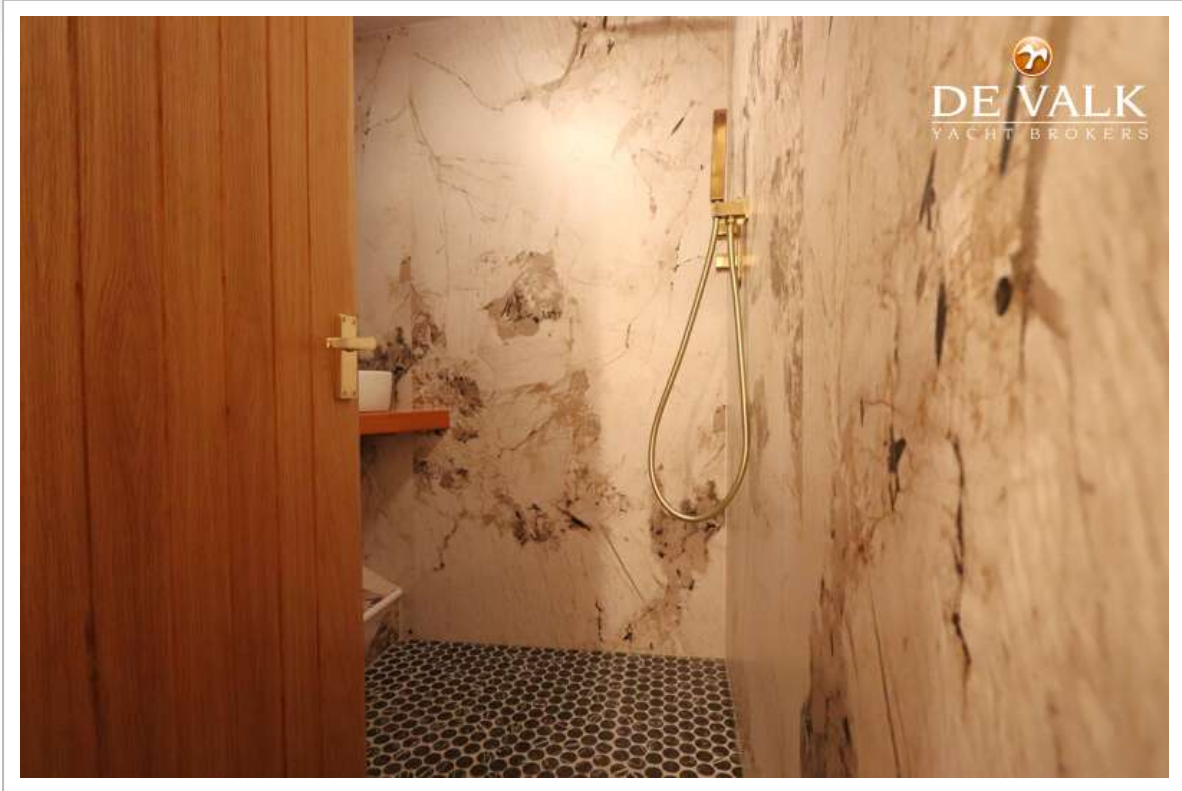
CUSTOM BUILT EXPLORER



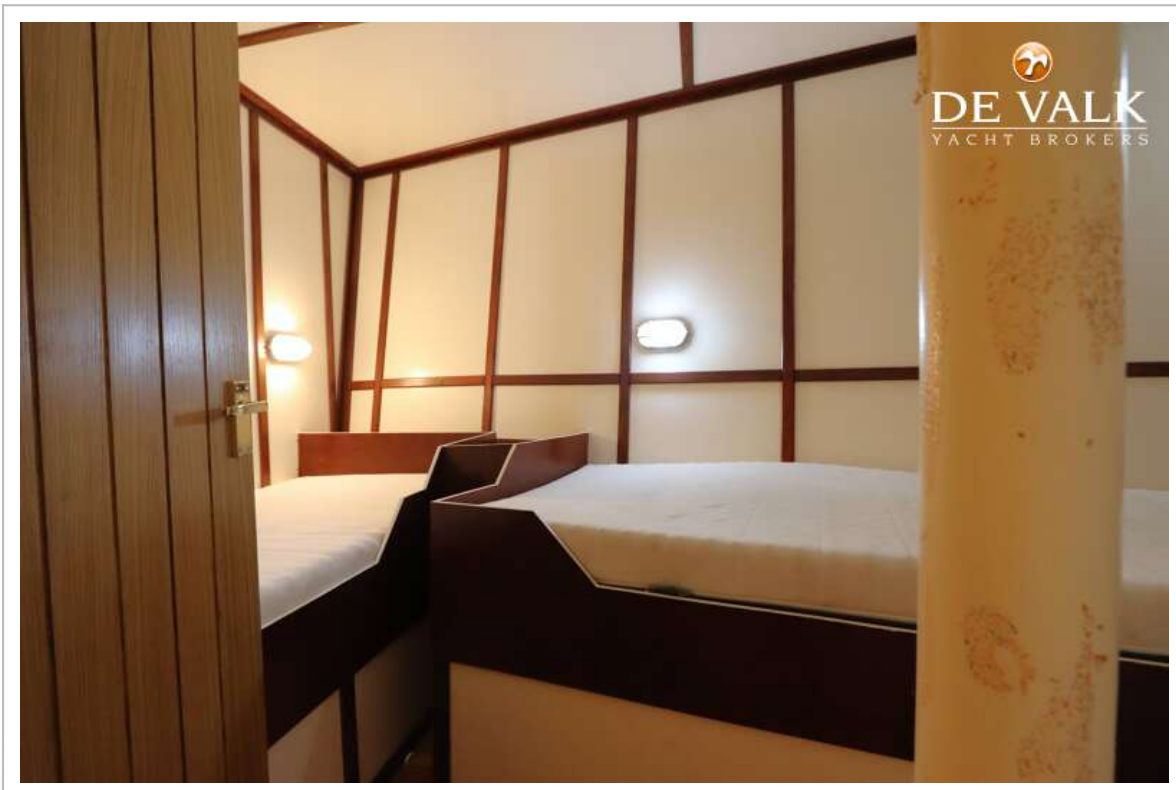
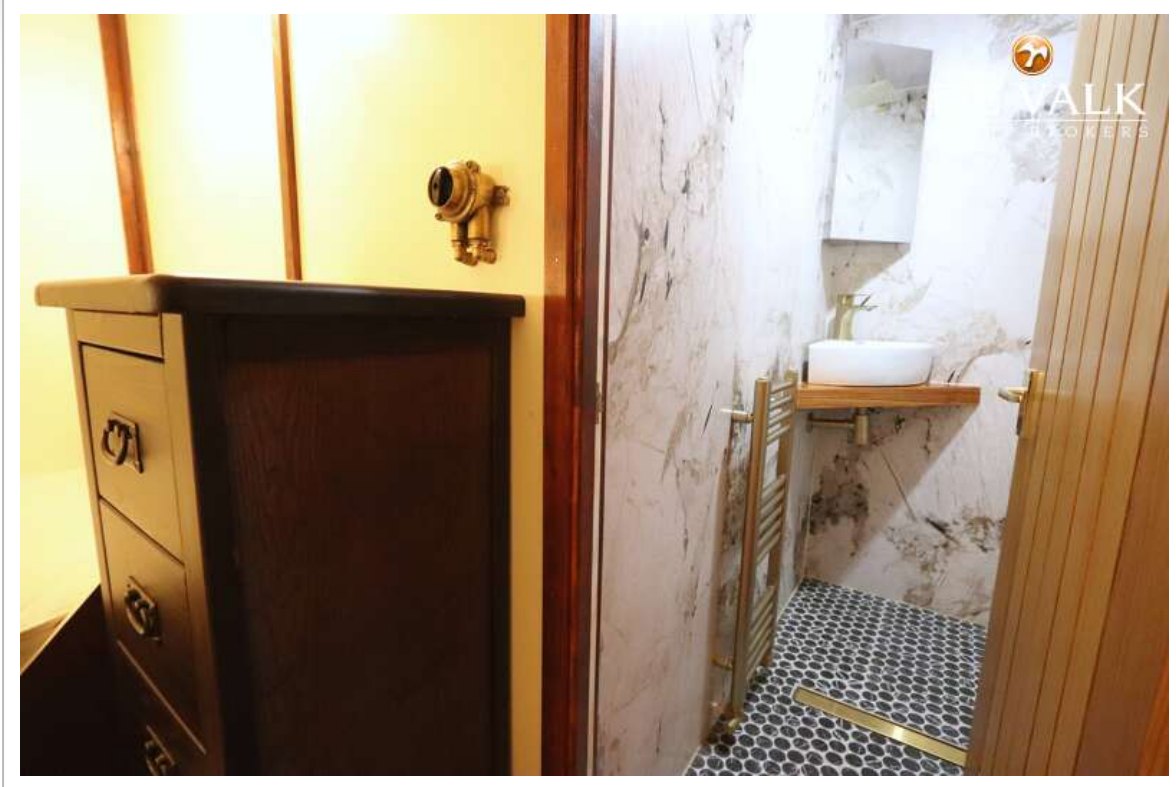
CUSTOM BUILT EXPLORER



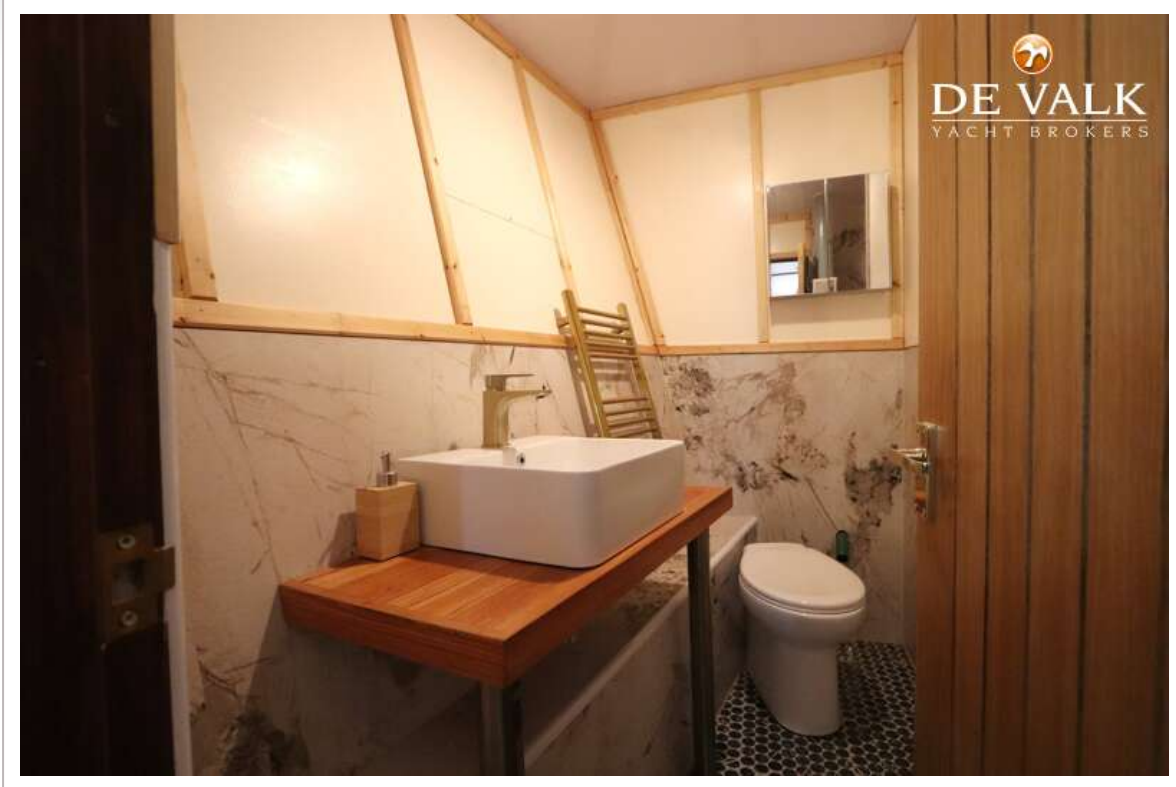
CUSTOM BUILT EXPLORER



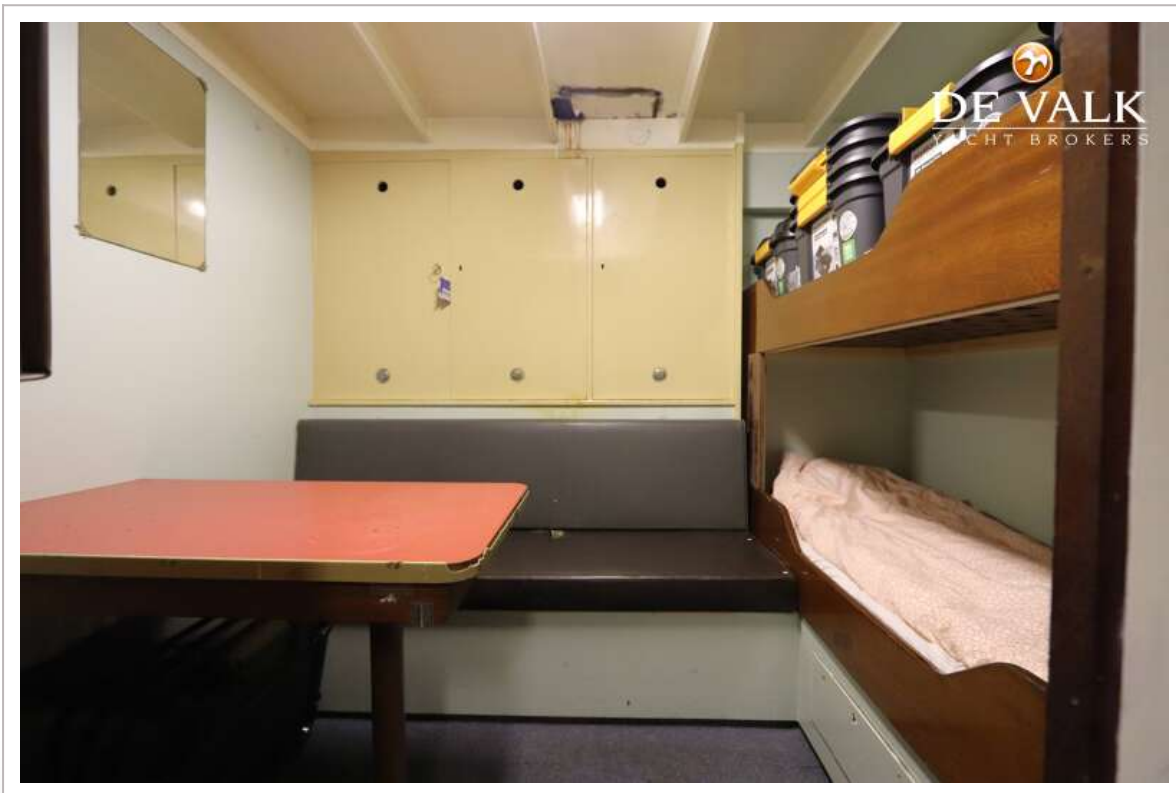
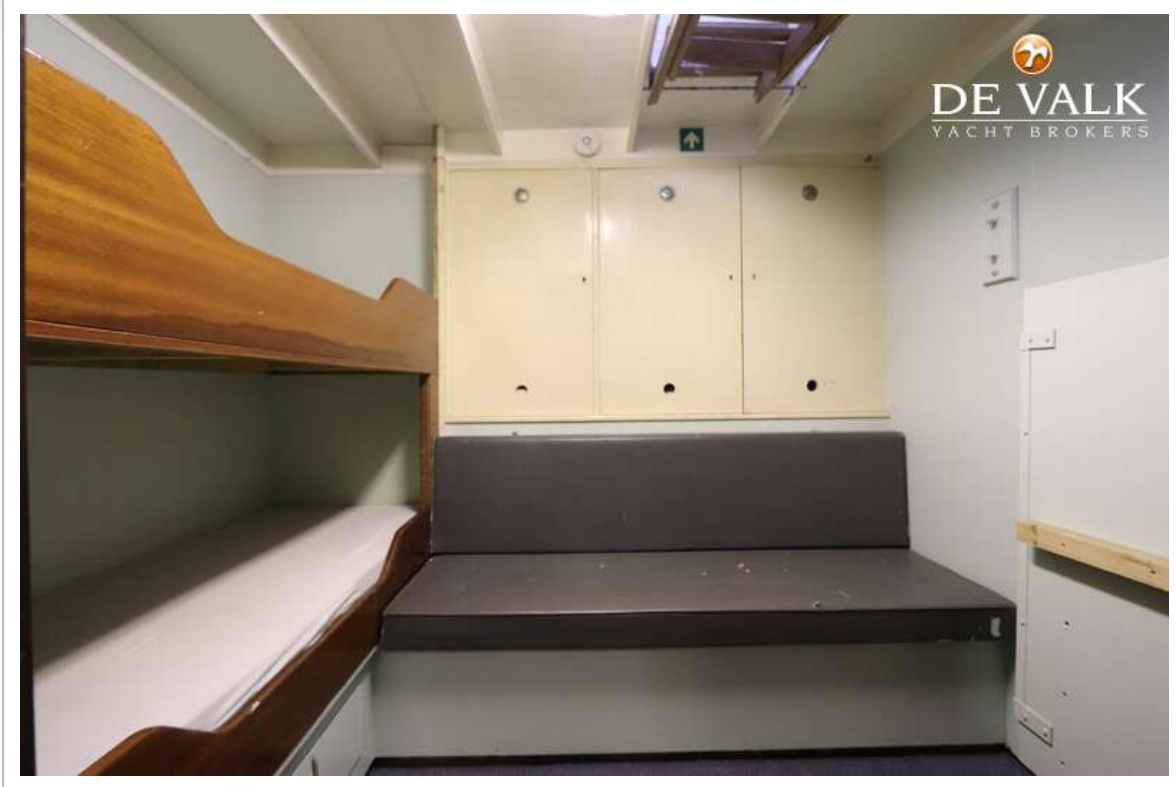
CUSTOM BUILT EXPLORER



CUSTOM BUILT EXPLORER



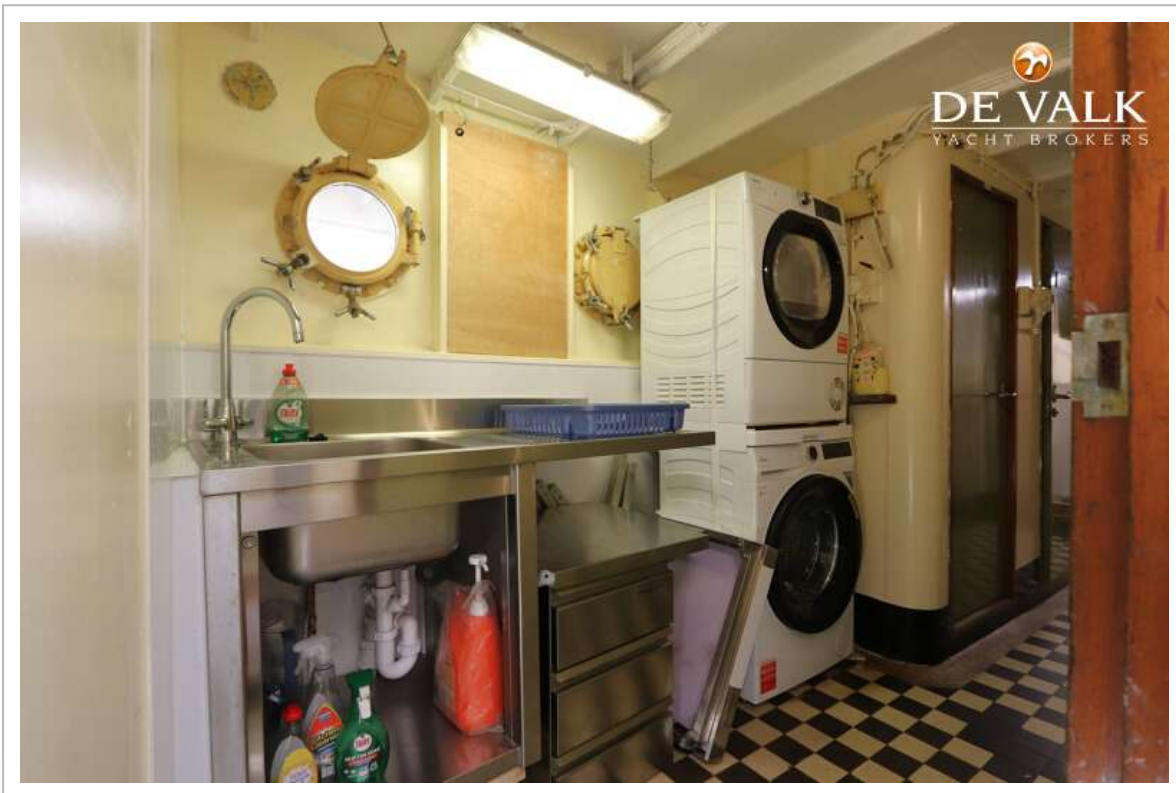
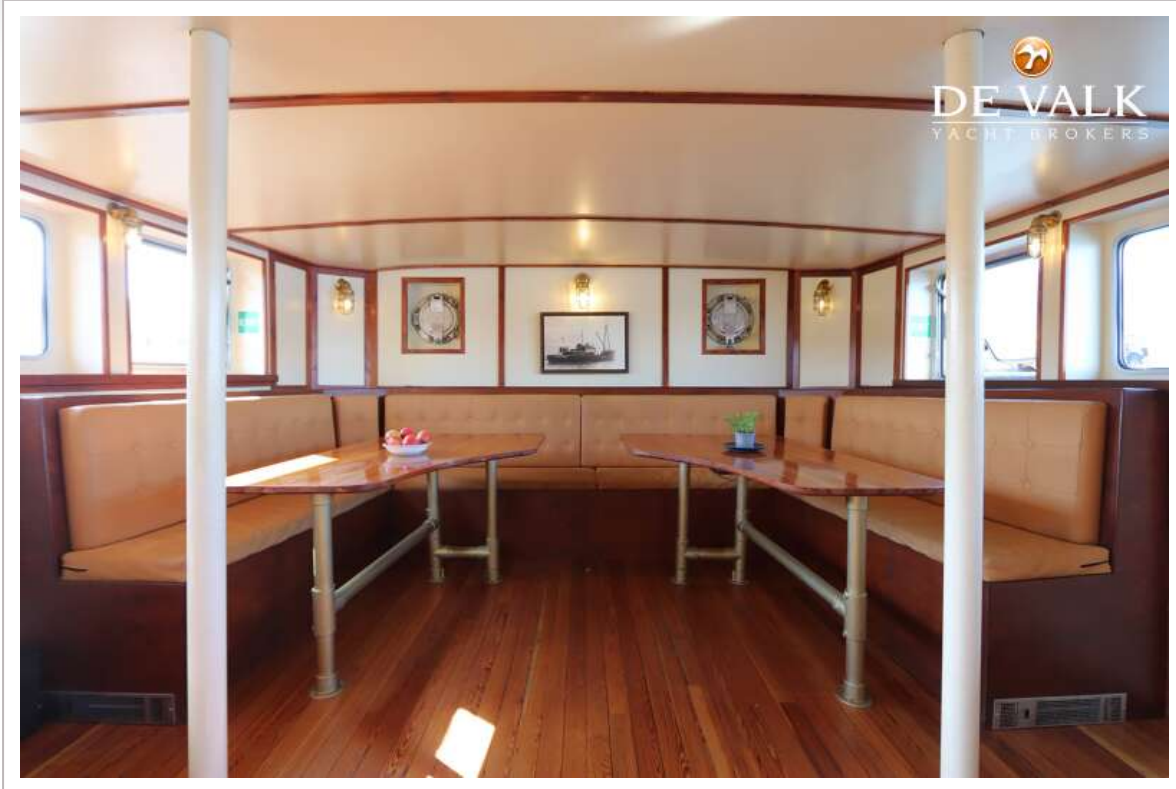
CUSTOM BUILT EXPLORER



CUSTOM BUILT EXPLORER



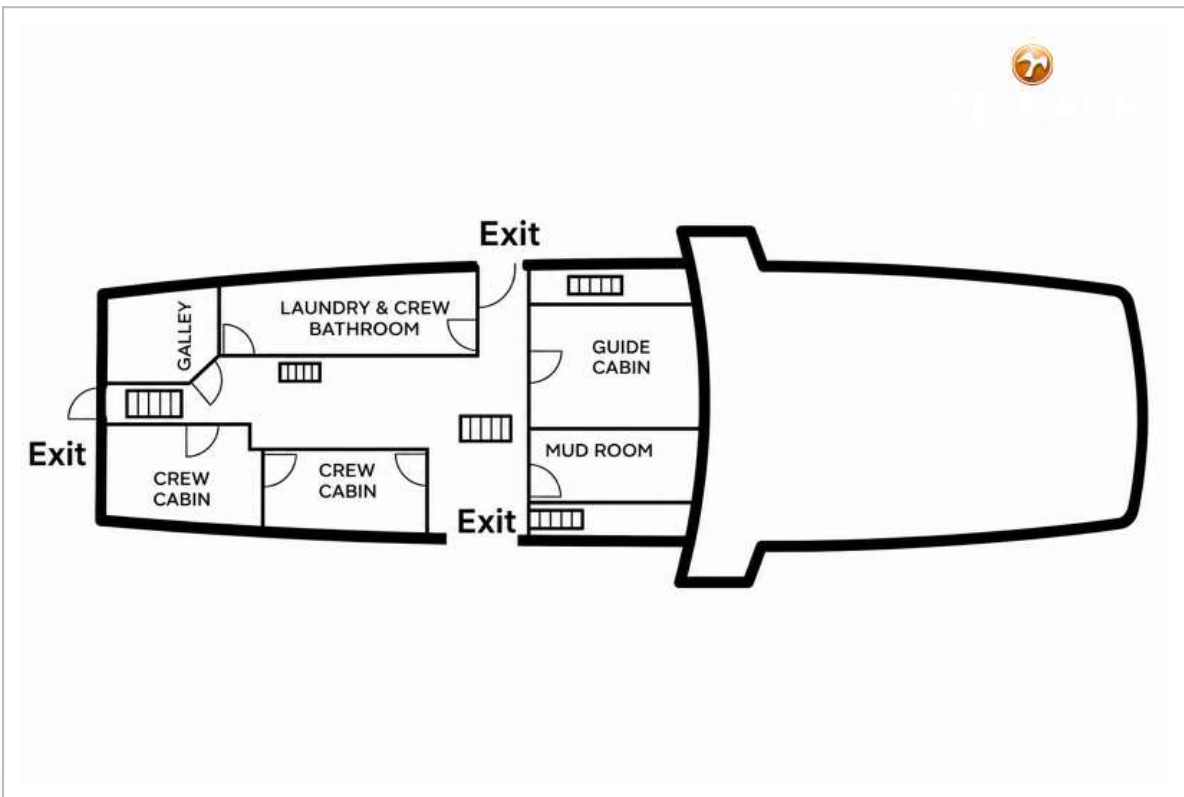
CUSTOM BUILT EXPLORER



CUSTOM BUILT EXPLORER



CUSTOM BUILT EXPLORER



CUSTOM BUILT EXPLORER

