



DE VALK
YACHT BROKERS



NAJAD 330



DE VALK
YACHT BROKERS

KOMMENTARE DES MAKLERS

Deze Najad 330 biedt een uitstekende kans om eigenaar te worden van een van de meest gewaardeerde Scandinavische kwaliteitsjachten. Het schip verkeert in een verzorgde staat en heeft de afgelopen jaren veel aandacht en investeringen ontvangen. De huidige eigenaar, sinds 2021 de tweede eigenaar van het schip, heeft haar met grote zorg onderhouden. Dankzij de praktische indeling met twee hutten is de Najad 330 ideaal voor langere reizen of comfortabel verblijf aan boord. Een vaarklaar jacht, gereed voor een nieuw avontuur.

Joris van de Rijt

TECHNISCHE DATEN

Maße	10.00 x 3.40 x 1.60 (m)	Werft	Najad Varvet AB
Baujahr	1994	Kabinen	2
Material	GFK	Kojen	6
Motor(en)	1 x Volvo Penta MD 40 diesel	PS/kW	38.00 (PS), 27.97 (kW)
Angebotspreis	€ 79.000 (MwSt. Bezahlt)	Liegeplatz	beim Verkaufsbüro

KONTAKT

Verkaufsbüro	De Valk Sint Annaland B.V.	Telefon	+31 166 601 000
Adresse	Koelhuisweg 4 4697 RM Sint Annaland NL	E-Mail	sintannaland@devalk.nl

HAFTUNGSAUSSCHLUSS

Diese Angaben erfolgen nach bestem Wissen, können jedoch nicht garantiert werden.



ALLGEMEIN

Modell	NAJAD 330
Typ	Segelyacht
Rumpflänge (m)	10,00
Wasserlinienlänge (m)	8,40
Breite (m)	3,40
Tiefgang (m)	1,60
Durchfahrtshöhe (m)	14,60
Baujahr	1994
Werft	Najad Varvet AB
Land	Schweden
Entwerfer	Erik Segerlind
Gewicht (t)	6
Ballast (Ton)	2,2
Rumpfmateriäl	GFK
Rumpffarbe	Weiß Blue striping wrap new 2022
Rumpfform	Rundspant
Art Kiel	Flossen Kiel
Material Aufbauten	GFK
Deckmaterial	GFK
Deck Finish	Teak (renovated 2021)
Deck Finish Aufbauten	Antirutsch Belag
Pflicht Bedeckung	Teak (renovated in 2021)
Dorado Belufter	2 x
Fenster Einfassung	Aluminium
Fenster Material	Perspex
Decks Luke	2 x
Radar Träger	nicht klappbar With cardanic radar mount
Treibstofftank (Liter)	150
Trinkwassertank (Liter)	200
Pinne	With Spinlock tiller extension, Seasure tiller lock and cover



Weitere Info Rumpf

Underwater hull new primer + Copper coat 2021

UNTERKUNFT

Kabinen	2
Kojen	6
Innen	Mahagoni
Fussboden	Teak und Holly + carpet
Heizung	Diesel Heißluft Eberspacher (serviced 2026)
Kartentisch	ja
Achterkabine	ja
Dinette	ja
Kombüse	ja
Arbeitsfläche	Kunststoff
Spülbecken	Edelstahl
Herd	3 burner
Ofen	ja
Kuhlschrank	Toploader (new compressor 2016)
Warmwasser System	220V + Motor
Wasserdruck System	elektrisch
Eignerkabine	V-Bett (mattress with slatted base)
Kleiderschrank	Regale und hängend
Badezimmer	gemeinsam
Toilet	gemeinsam
Toilette System	handbetrieb Jabsco (2022)
Handwaschbecken	im Badezimmer
Gästekabine 1	Doppelbett
Kleiderschrank	Regale und hängend
Weitere Info	All upholstery saloon + cabins new 2012. new curtains 2022
Weitere Info	All interior lighting renewed (2023)

MASCHINEN



Motoranzahl	1
Marke	Volvo Penta
Typ	MD 40
PS	38
kW	27.97
Kraftstoffart	Diesel
Installiert im Jahr	2010
Motorstunden	1808
Kühlungssystem Motor	indirekte Wärmetauscher
Antrieb	Saildrive
Saildrive Dichtung	2017
Motor bedienung	Seilzug Kabel
Bugschraube	Wasserstrahl Hydra Jet with wireless remote (2011)
Propeller Typ	falt Volvo Penta (2023)
Propellerblätter	3
Hand Bilgenpumpe	ja
Elektrische Bilgenpumpe	ja
Elektrische Anlage	12/230V
Starterbatterie	1 x (2023)
Versorgungsbatterie	2 x Victron (2024)
Bugschraubebatterie	2 x (2021)
Batterie Ladegerät	Victron (service+start) Cetrek (bowthruuster battery's)
Umwandler	Victron
Landstrom	mit Kabel
Weitere Info	Engine panel connected to B&G plotter

NAVIGATION

Kompass	ja
Tiefenanziege	B&G (2022)
Logge	B&G (2022)
Windlupe anzeige	B&G (2022)



UKW	B&G V60-B + H60 handheld in cockpit (2022)
Autopilot	Autohelm 2000 (not holding course; new unit included)
Radar	B&G HALO 20+ (2022)
GPS	Philips
Plotter	B&G Vulcan 9 (2022)
Navtex	NASA
AIS Transponder	B&G
Navigation Beleuchtung	LED

AUSRÜSTUNG

Feste Fenster	ja
Spritzverdek	(2020)
Kuchenbude	(2020)
Cockpit Tisch	ja
Badeleiter	Edelstahl
Anker	Rocna
Ankerkette	40M
Ankerwinde	handbetrieben Simpson Lawrence
See Reling	Draht/Seil
Zupackenschiene (aufbauen)	Teak
Seiten-Einstieg Seereling	2 x
Heckkorb	ja
Bugkorb	ja
Radar Reflektor	Trilens
Fenderkissen	ja
Festmacher	ja
Radio-CD Spieler	Sony
Lautsprecher im Salon	(2023)
Uhr - Barometer	ja

RIGG



Rig	Sloop
Stehendes Gut	Drahtseil (age unknown) with Hasselfors Turnbuckle covers
Marke Mast	Seldén
Material Mast	Aluminium
Salings	2 sets
Großsegel-Persenning	(2022) with lazyjacks
Latten traveller	ja
Durchelatted großsegel	Lion Sails (2014) new Selden sheet blocks (2026)
Fock	ja
Genua	Lion Sails (2014)
Rollreffanlage	Selden
Genua-Persenning	(2022)
Reff Vorrichtung	Reffleinen
Achterstag Spanner	mechanisch Hasselfors
Baumniederhohler	Gasdruckfeder Selden (new gasspring 2022)
Genua Schotwischen	2 x Lewmar ST
Spi Wischen	2 x Lewmar ST
Multifunktional Wischen	4 x Lewmar on mast
Spi-Baum	Aluminium Selden
Weitere Info	Running rigging and sheets replaced 2022-2023



NAJAD 330



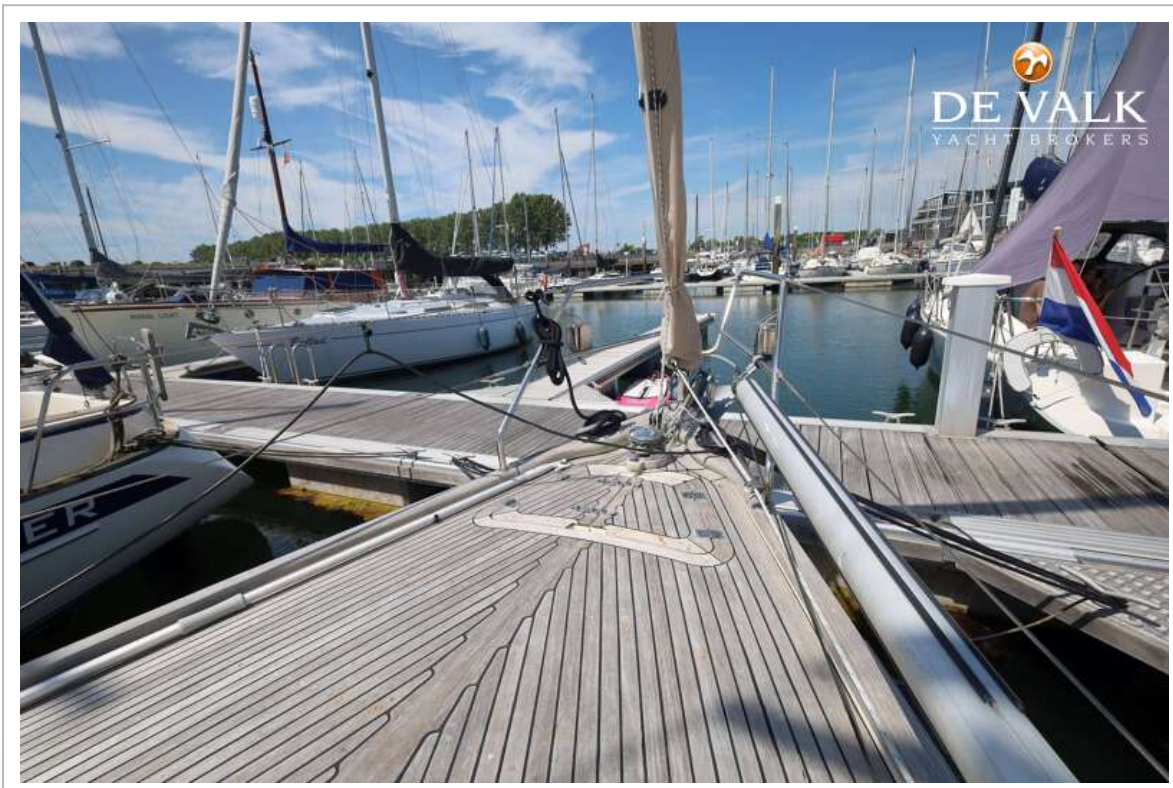
NAJAD 330



NAJAD 330



NAJAD 330



NAJAD 330



NAJAD 330



NAJAD 330



NAJAD 330



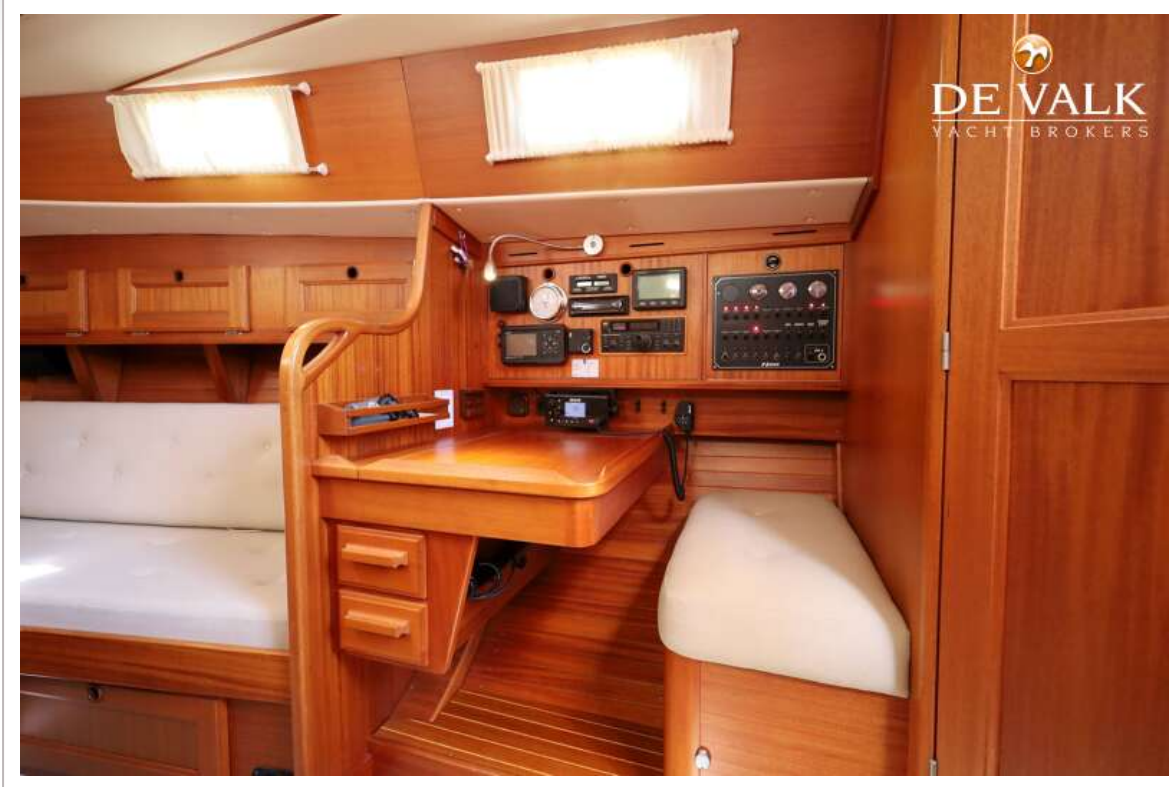
NAJAD 330



NAJAD 330



NAJAD 330



NAJAD 330



NAJAD 330



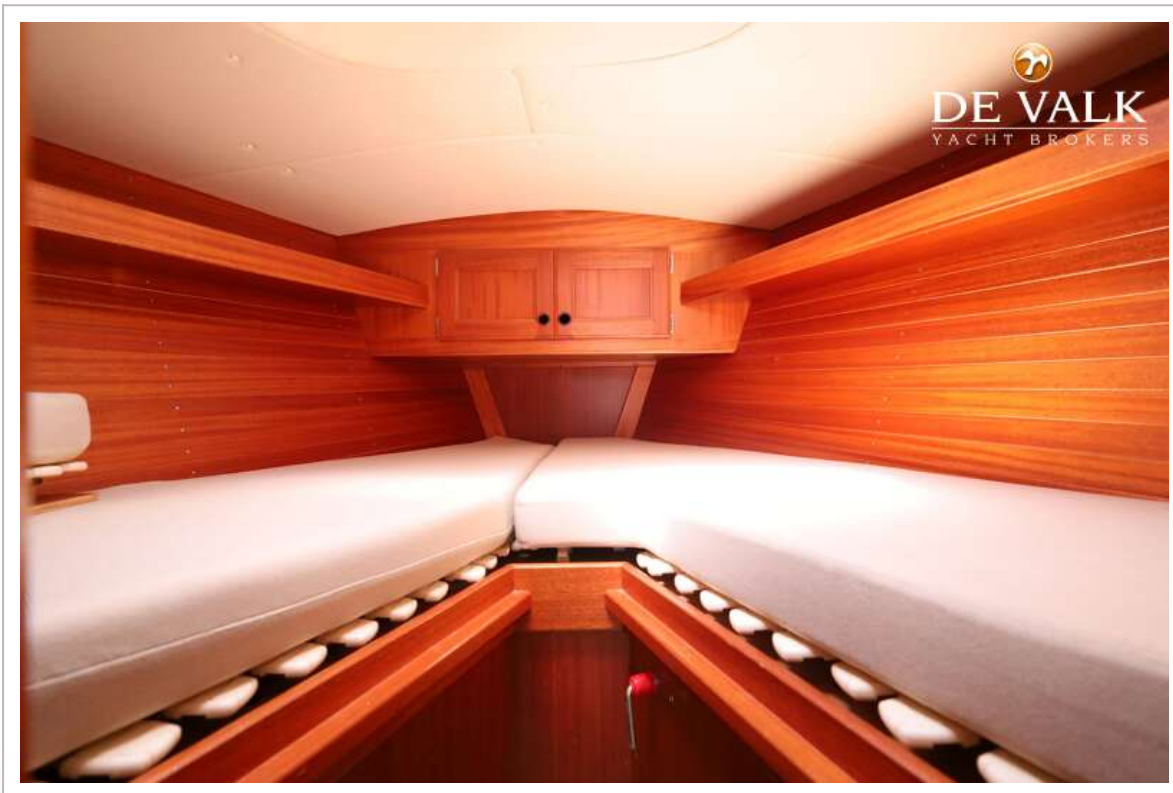
NAJAD 330



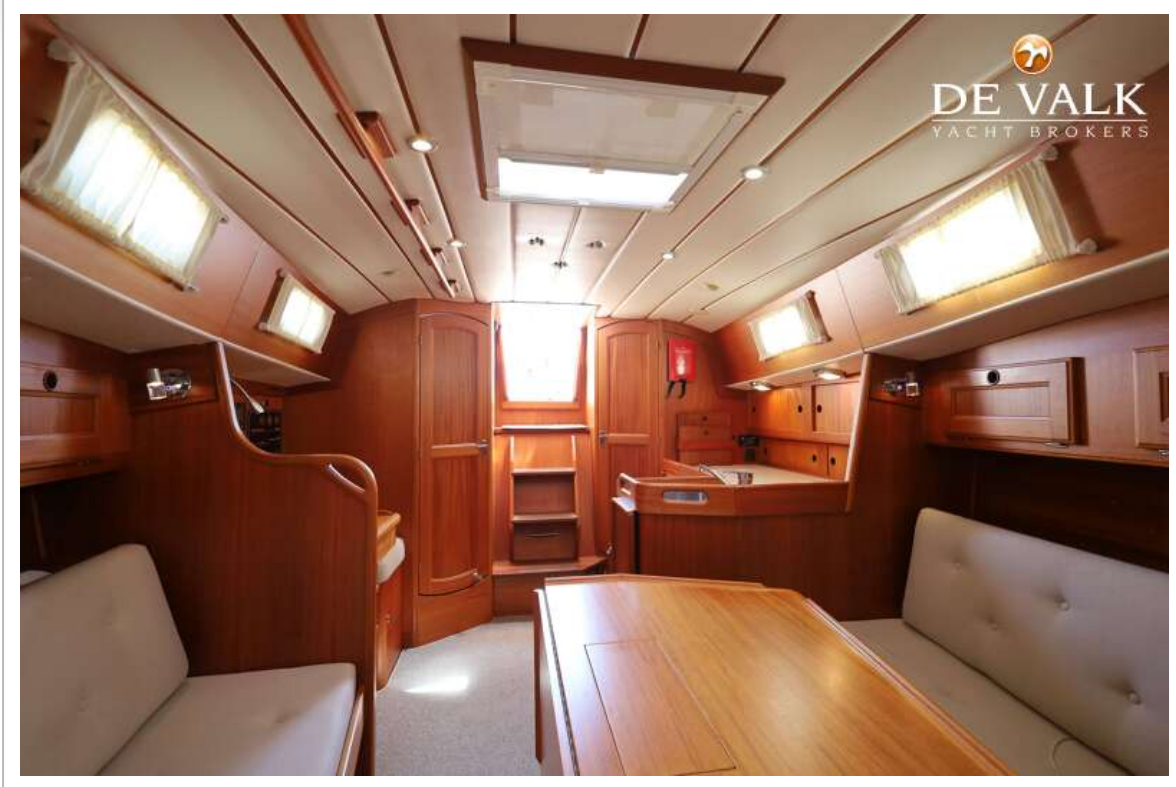
NAJAD 330



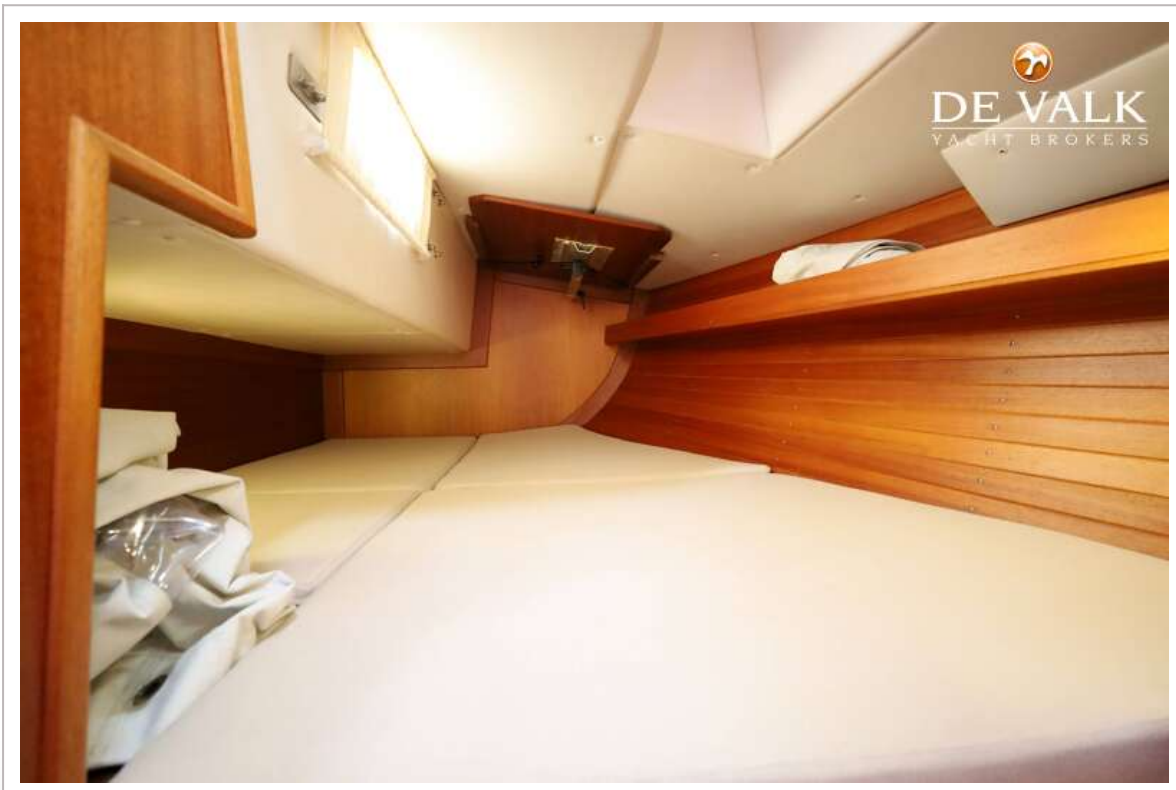
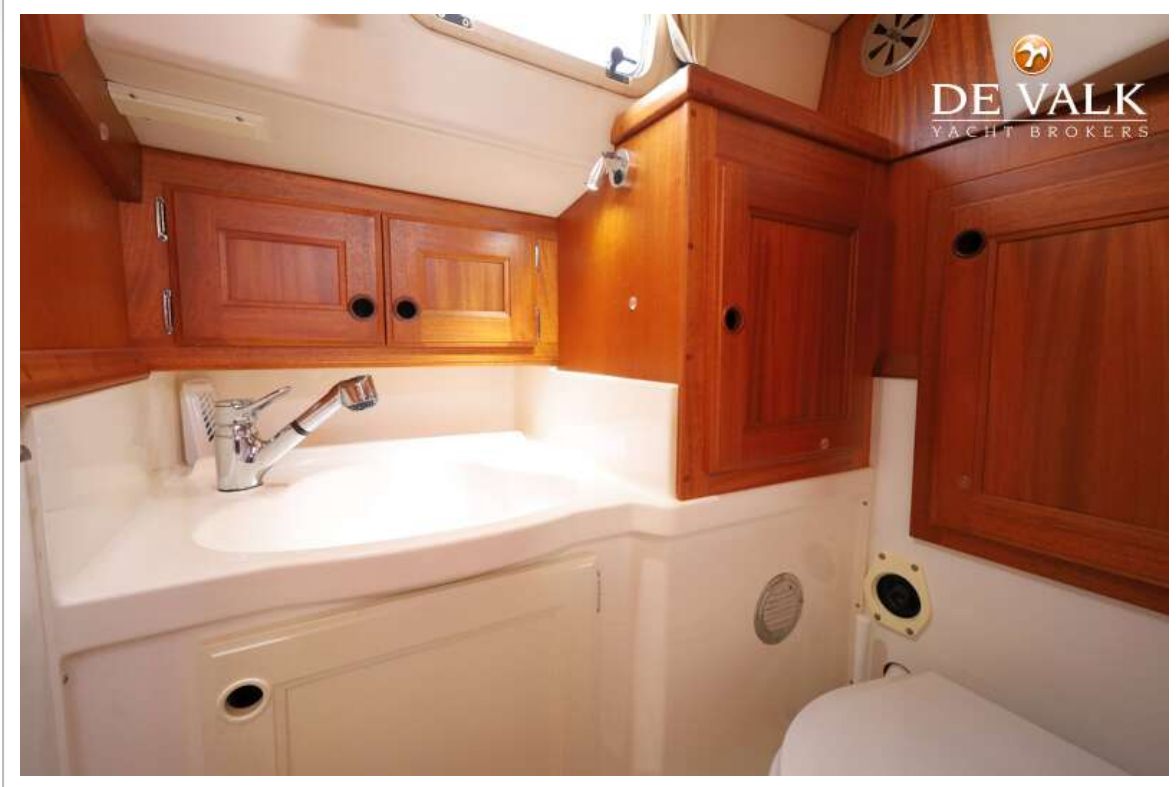
NAJAD 330



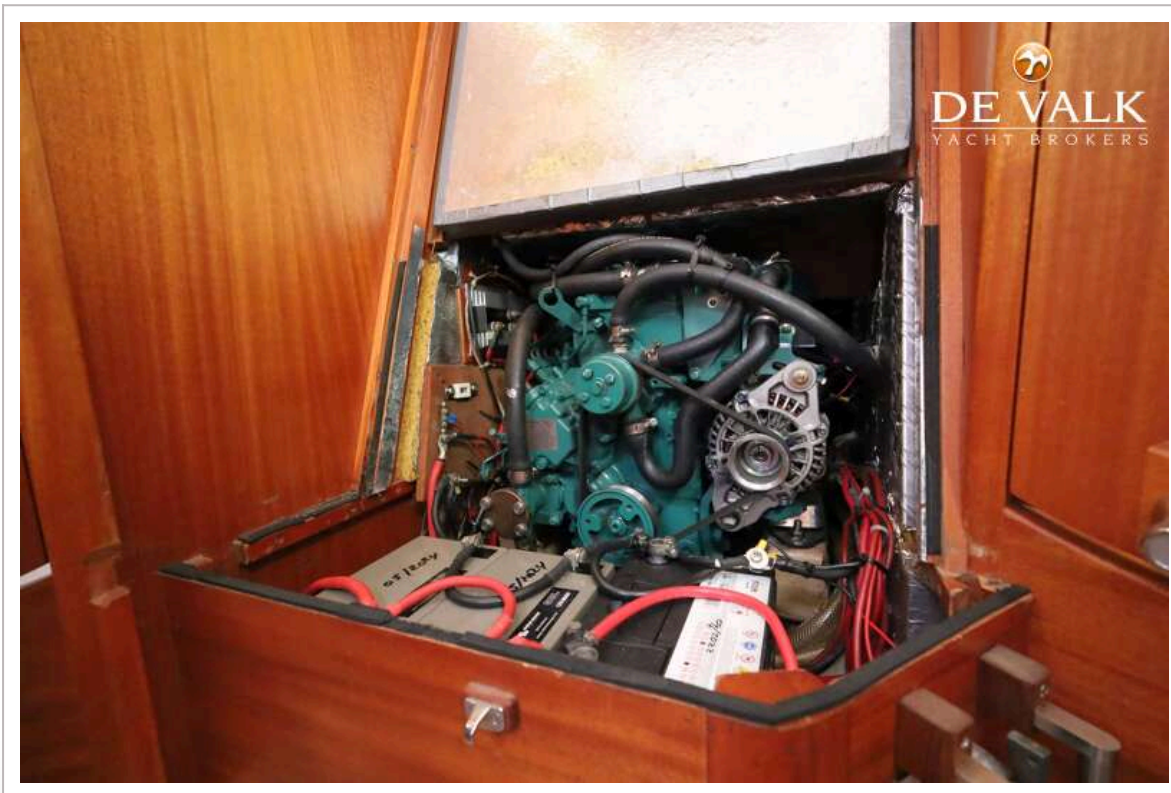
NAJAD 330



NAJAD 330



NAJAD 330



FREQUENTLY ASKED QUESTIONS



DE VALK
BROKERS

What is the reason for selling your yacht?

We have purchased a larger Najad and therefore decided to sell this yacht.

How many owners has your yacht had and when?

We are the second owners since 2021. The yacht was originally purchased from Najad Benelux in Scharendijke in 1993 and delivered in spring 1994.

What can you tell about the history and cruising area of your yacht?

The yacht has always been based in Zeeland and stored in a heated shed during winter. It has been lightly used and sailed mainly in the Zeeland waters.

Why did you choose this yacht when you bought it?

Having owned several Swedish yachts, we consider this one of the best in terms of quality. We were particularly impressed by the spacious interior, practical layout, and excellent cockpit ergonomics.

What is the special meaning of the name of the yacht for you?

"Elysium" means "paradise," which perfectly reflects the feeling of being on board.

Has your yacht ever been used for charter? And if so, when?

No.

What can you tell about the sailing characteristics of your yacht?

The yacht sails exceptionally well, especially in winds above Force 4. The Lian sails are easy to handle and of excellent quality. The yacht feels safe and solid in rough conditions. A Hydro bow thruster with remote control makes manoeuvring easy.

What did you do with your yacht during the winter?

Always indoors in a heated shed at Mariteam, St. Annaland.

What kind of maintenance or renewals have been carried out (with documentation as prove)?

The yacht has received extensive annual maintenance and upgrades. Documentation is available; please refer to the specification list.

What are, according to you, future points of attention with regard to the maintenance of your yacht?

Saildrive gaiter replacement in the coming years.

Autohelm calibration or possible replacement.

Gas installation inspection and certification.

Minor electrical checks.

Annual teak deck maintenance.

Which four keywords would you use to describe your yacht?

op-quality construction

Excellent condition

Great sailing characteristics

Practical and spacious interior

