



VAN GELDER KRUISER 1750

KOMMENTARE DES MAKLERS

This Van Gelder Kruiser 17.50 has remained within the same family since new. The vessel has been carefully used and maintained over the years and is equipped with a range of comfort-enhancing features, including a generator and stabilizers. With three cabins, she offers ample sleeping accommodation for family and guests. In 2025, the hull and superstructure were professionally repainted, and the underwater hull received extensive maintenance. A characterful motor yacht benefiting from significant recent investments.

Jochem Heijermans

TECHNISCHE DATEN

Maße	17.50 x 4.50 x 1.40 (m)	Werft	van Gelder
Baujahr	1978	Kabinen	3
Material	Stahl	Kojen	8
Motor(en)	2 x DAF 615 diesel	PS/kW	2 x 175.00 (PS), 128.80 (kW)
Angebotspreis	€ 167.000 (MwSt. Mehrwertsteuerfrei)	Liegeplatz	beim Verkaufsbüro

KONTAKT

Verkaufsbüro	De Valk Sint Annaland B.V.	Telefon	+31 166 601 000
Adresse	Koelhuisweg 4 4697 RM Sint Annaland NL	E-Mail	sintannaland@devalk.nl

HAFTUNGSAUSSCHLUSS

Diese Angaben erfolgen nach bestem Wissen, können jedoch nicht garantiert werden.



VAN GELDER KRUISER 1750

ALLGEMEIN

Modell	VAN GELDER KRUISER 1750
Typ	Motoryacht
Rumpflänge (m)	17,50
Breite (m)	4,50
Tiefgang (m)	1,40
Durchfahrtshöhe (m)	3,40
Stehhöhe (m)	1,90
Baujahr	1978
Lancierung	1982
Werft	Van Gelder
Land	Niederlande
Gewicht (t)	35
Rumpfmateriäl	Stahl
Rumpffarbe	Grün
Rumpfform	Knikspant
Material Aufbauten	Stahl
Stossliste	Gummi
Deckmaterial	Stahl
Deck Finish	Teak
Deck Finish Aufbauten	Teak + paint on rooftop
Pflicht Bedeckung	Teak
Antifouling (Jahr)	2025
Fenster Einfassung	Aluminium
Fenster Material	Standard Glas
Decksluke	ja
Bullauge	6 x
Isolation	Schaumplatten Tempex
Radar Träger	klappbar
Mast legbar	elektrisch With wireless remote control
Treibstofftank (Liter)	Stahl 2 x 600



Füllstandsanzeige (Treibstofftank)	ja
Trinkwassertank (Liter)	Stahl 2 x 150
Fäkaelien Tank (Liter)	ja
Fäkaelien Tankablauf	Deck Absaugstützen
Radsteuerung	Kette Steuerung
Innerhalb Steuerung	ja
Aussen Steuerung	ja
Weitere Info Rumpf	Underwater hull sand blasted 2025
Weitere Info Farbe und Anstrich	Hull + Superstructure painted 2025

UNTERKUNFT

Kabinen	3
Kojen	8
Fussboden	Teppich (2022)
Achterdeck	ja
Decksalon	ja
Standhöhe Salon (m)	1,90
Heizung	Zentral Warmwasser Webasto
Achterkabine	ja
Dinette	ja
Kombüse	ja
Arbeitsfläche	Fliesen
Spülbecken	Edelstahl
Herd	Induktion 4 burner
Mikrowelle/Backofen Kombi	Whirlpool
Kuhlschrank	Isotherm with freezer compartment
Warmwasser System	Geysier auf Gas
Wasserdruck System	elektrisch
Eignerkabine	Doppelbett Aft.
Länge Bett (m)	1,95 x 1,25
Kleiderschrank	hängend/Schublad/Regale



Badezimmer	getrennt Aft. starboard side
Toilet	getrennt
Toilette System	elektrisch
Handwaschbecken	im Badezimmer
Dusche	getrennt
Gästekabine 1	Stockbett Aft. portside
Länge Bett (m)	1,88
Gästekabine 2	V-Bett + bunk beds
Länge Bett (m)	V + bunk beds 1,95
Toilette	getrennt
Toilette System	elektrisch
Handwaschbecken	auf der Toilette
Weitere Info	New curtains 2022

MASCHINEN

Motoranzahl	2
Marke	DAF
Typ	615
PS	175
kW	128.80
Kraftstoffart	Diesel
Installiert im Jahr	1982
Überholung im Jahr	1982 (Overhauled engines fitted during construction)
Kühlungssystem Motor	indirekte Wärmetauscher
Antrieb	Schraubenwelle
Motor bedienung	Seilzug Kabel
Gewende getriebe	ja
Bugschraube	elektrisch
Propeller Typ	fest
Propellerblätter	3
Material Propellerwelle	Edelstahl



Propellerwelle schmierung	Fett
Elektrische Bilgenpumpe	ja
Elektrische Anlage	12/24/220V
Generator	Onan 5 kW
Batterien	6 x (2025)
Batterie Monitor	Victron
Batterie Ladegerat	2 x Victron Blue Smart
Batterie Ladegerat/Umwandler	Victron Quattro 24/3000/70
Landstrom	mit Kabel
Stabilisatoren	Finne SeaRocq
Weitere Info	Dual magnetic fuel filtration system with vacuum gauge.

NAVIGATION

Kompass	ja
Tiefenanziege/Logge	Simrad IS20
Windlupe anzeige	Simrad IS20
UKW	Sailtron RT144
Autopilot	Robertson
Ruderwinkel Anzeige	ja
Radar	Furuno + Simrad
GPS	Philips
Plotter	Simrad CR44
Navigation Beleuchtung	ja
Suchscheinwerfer	ja

AUSRÜSTUNG

Feste Fenster	Foldable to lower airdraft
Kuchenbude	(2024)
Badeplattform	ja
Badeleiter	Edelstahl
Heck-Tur	ja



Anker	Pool
Ankerkette	ja
Ankerwinde	elektrisch
Beiboot	(Not included, optional)
Ausserborder	(Not included, optional)
Davits	Stahl
Davits bedienung	elektrisch
See Reling	Edelstahl
Zupackenschiene (aufbauten)	Teak
Seiten-Einstieg Seereling	2 x
Rettungsboje	ja
Klar Sicht Scheibe	ja
Horn	ja
Fenderkissen	ja
Festmacher	ja
TV	ja
Radio-CD Spieler	ja
Lautsprecher im Salon	ja
Uhr - Barometer	ja



VAN GELDER KRUISER 1750



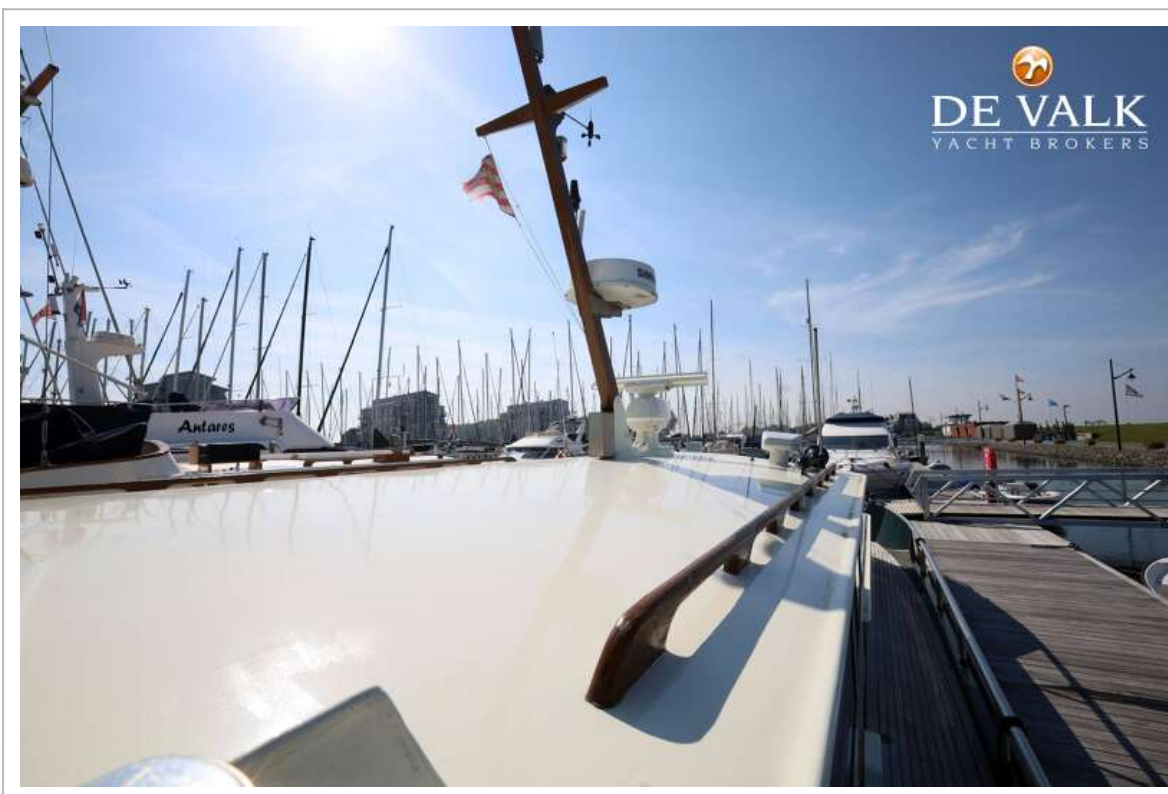
VAN GELDER KRUISER 1750



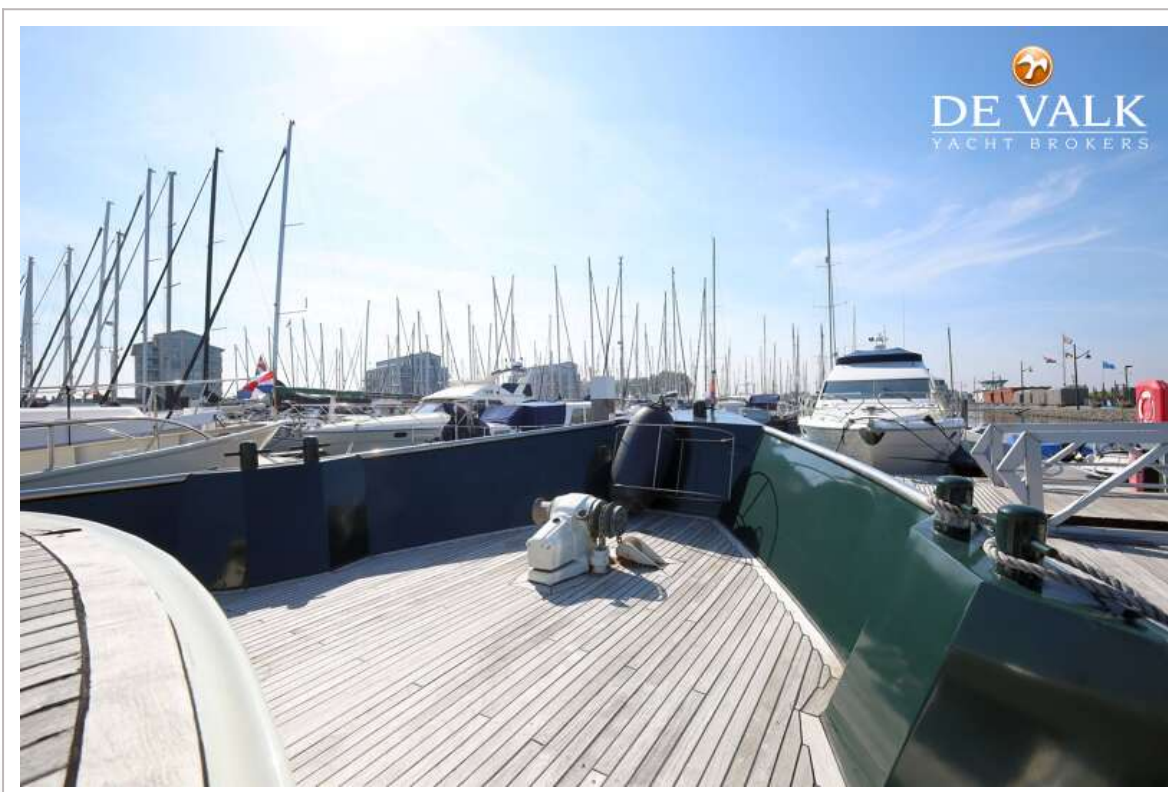
VAN GELDER KRUISER 1750



VAN GELDER KRUISER 1750



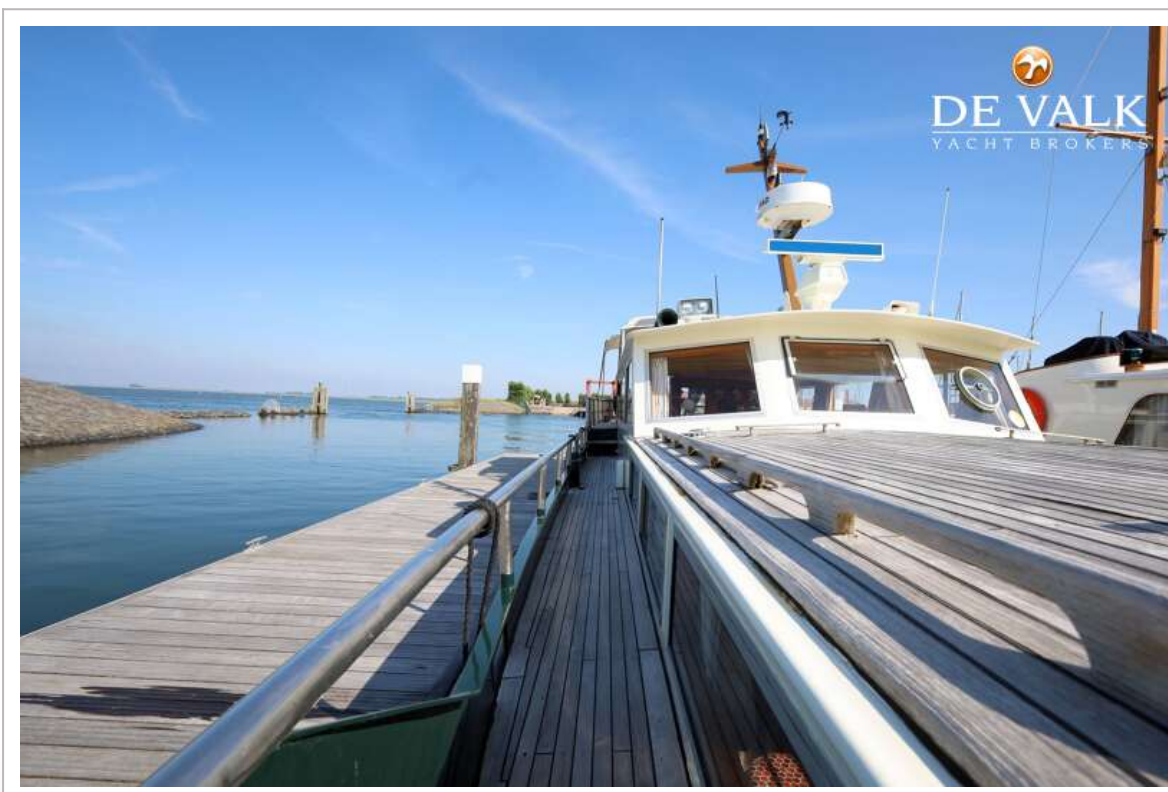
VAN GELDER KRUISER 1750



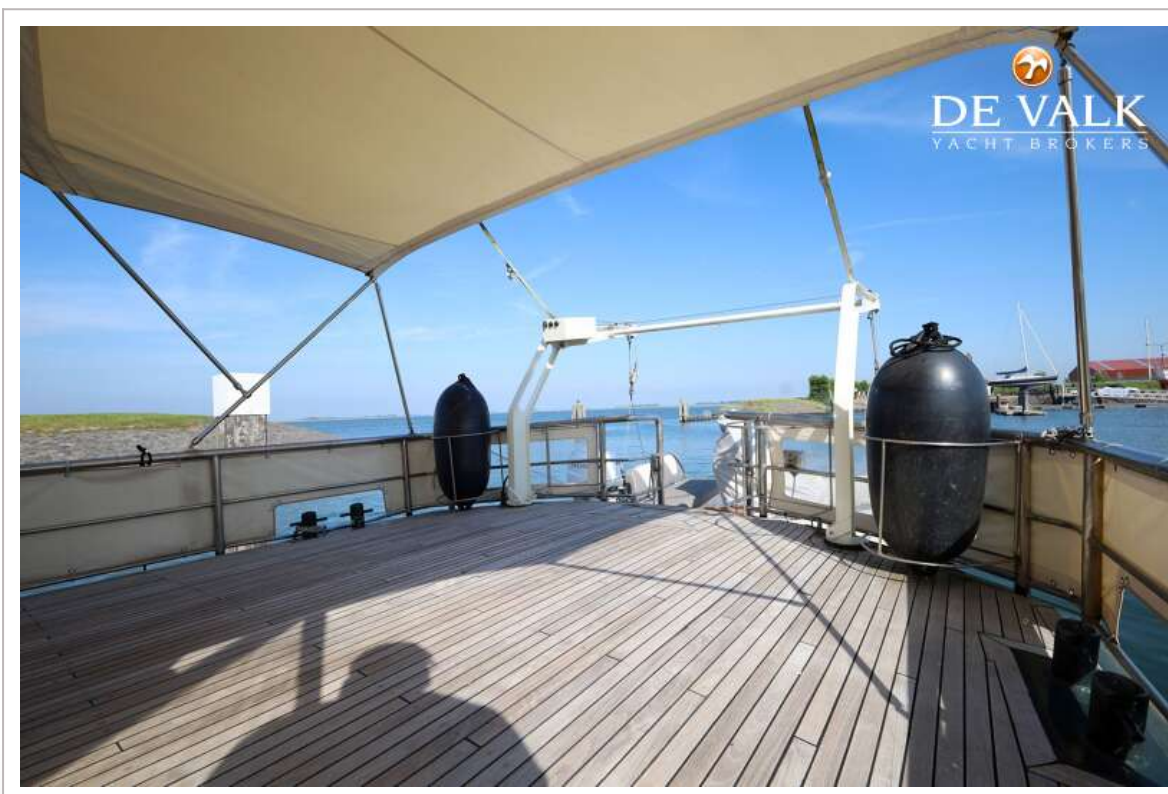
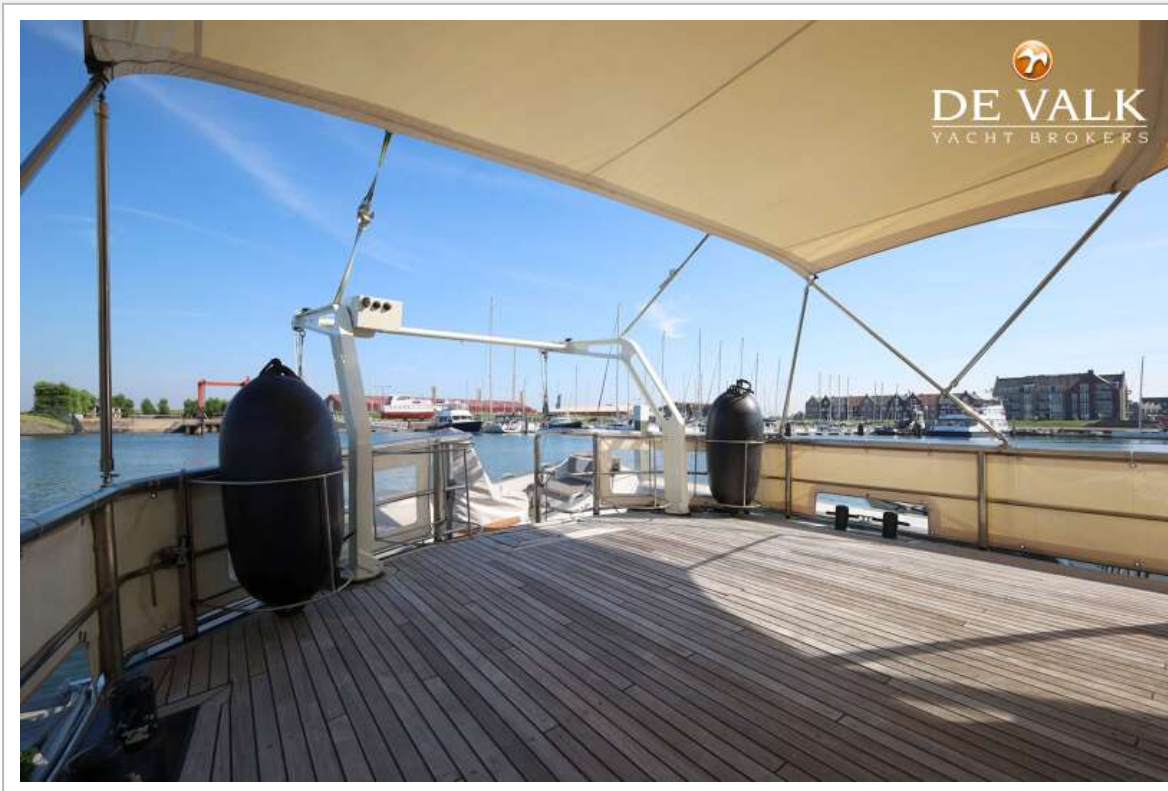
VAN GELDER KRUISER 1750



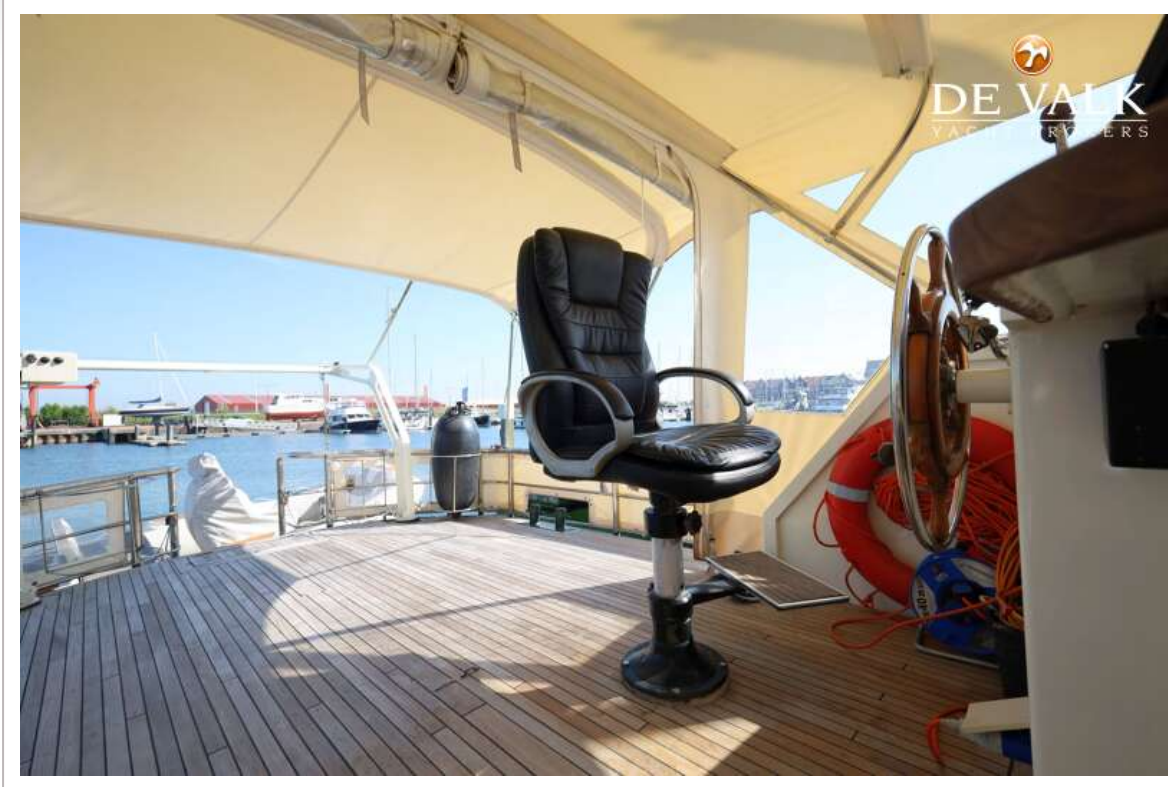
VAN GELDER KRUISER 1750



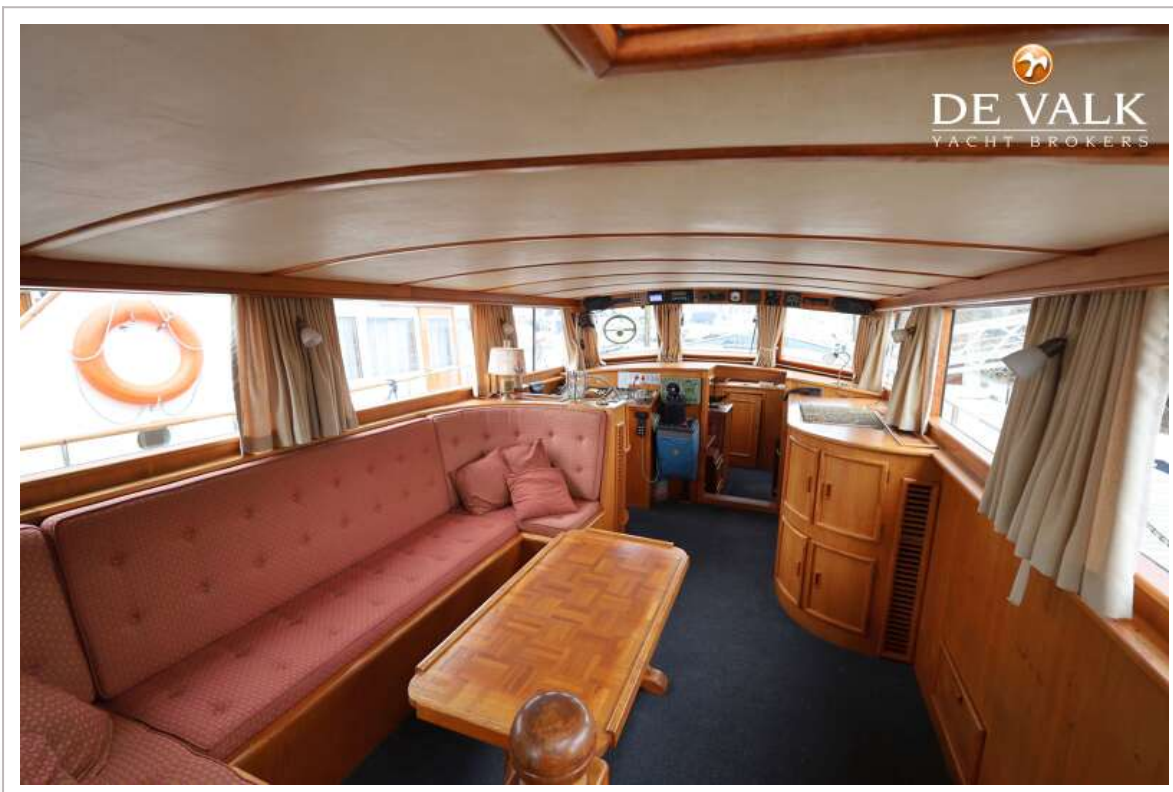
VAN GELDER KRUISER 1750



VAN GELDER KRUISER 1750



VAN GELDER KRUISER 1750



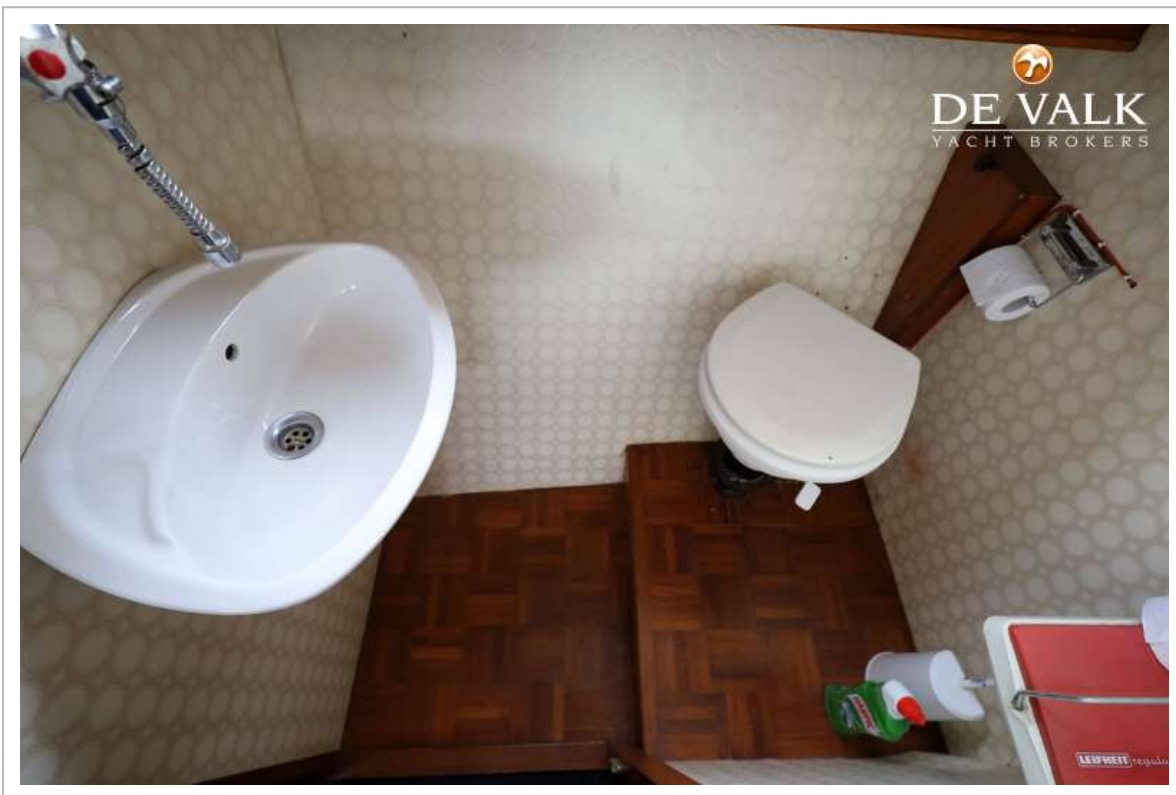
VAN GELDER KRUISER 1750



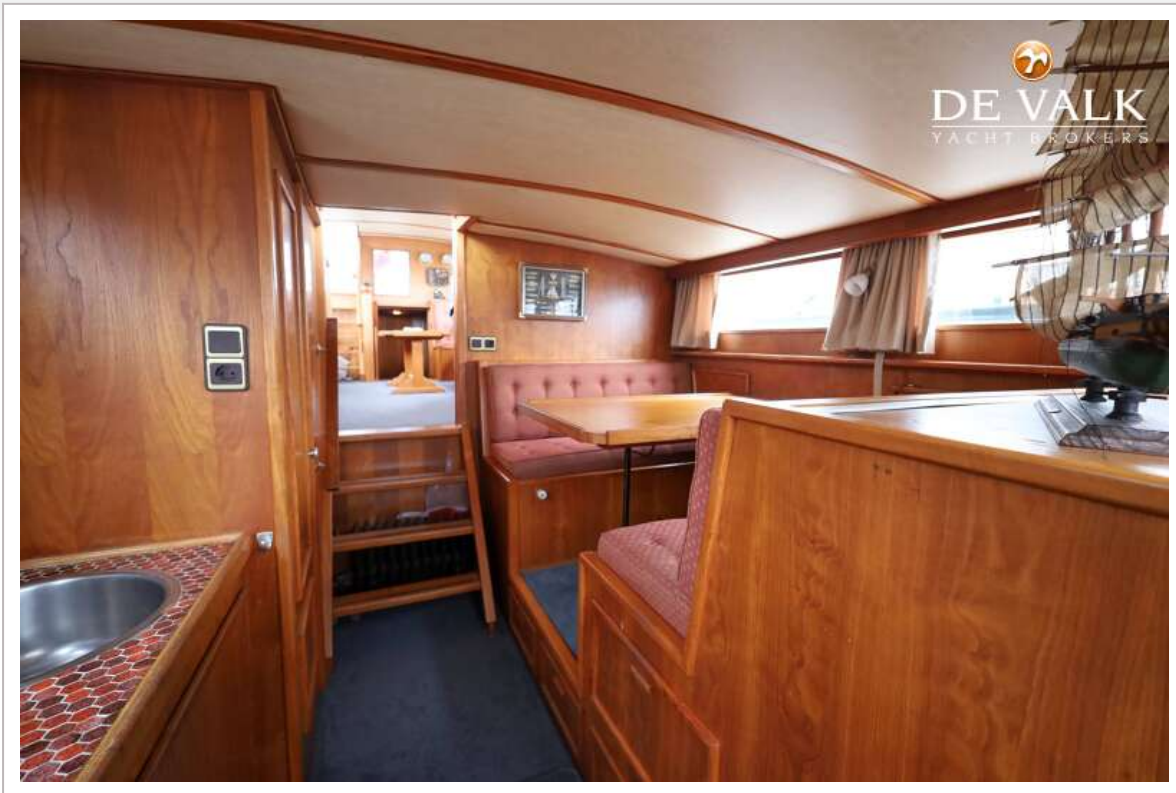
VAN GELDER KRUISER 1750



VAN GELDER KRUISER 1750



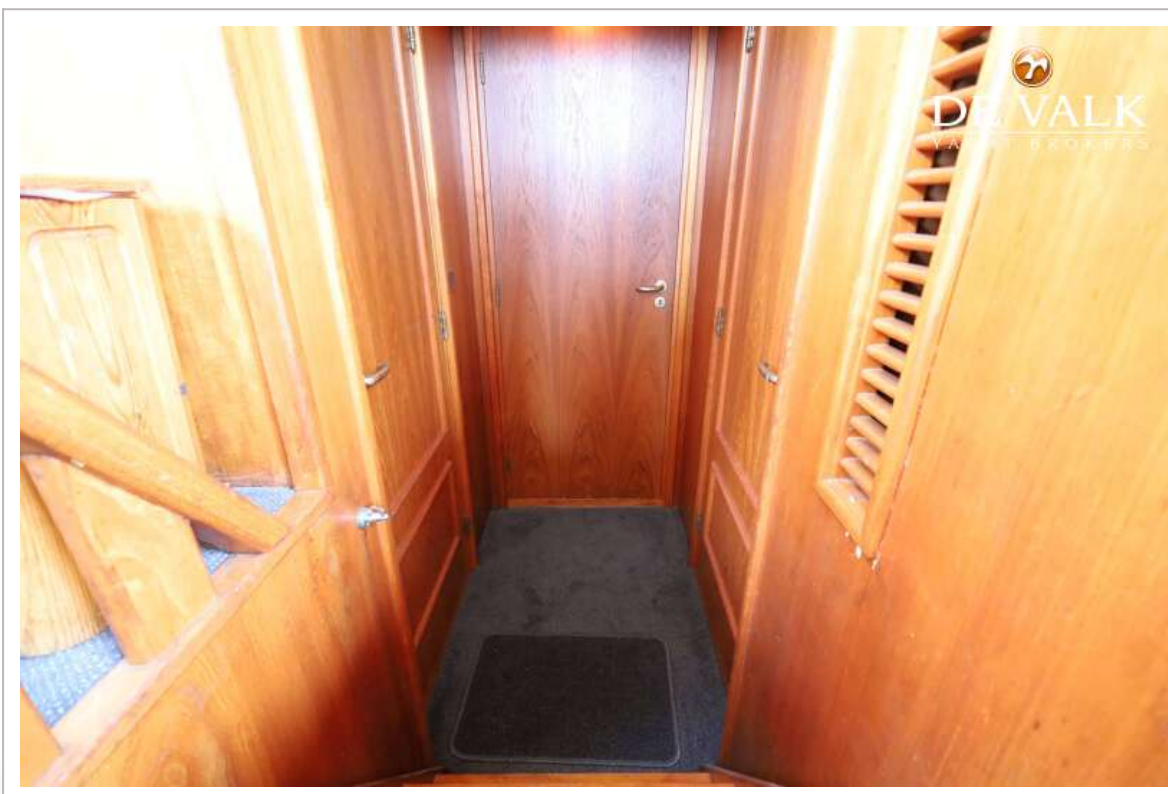
VAN GELDER KRUISER 1750



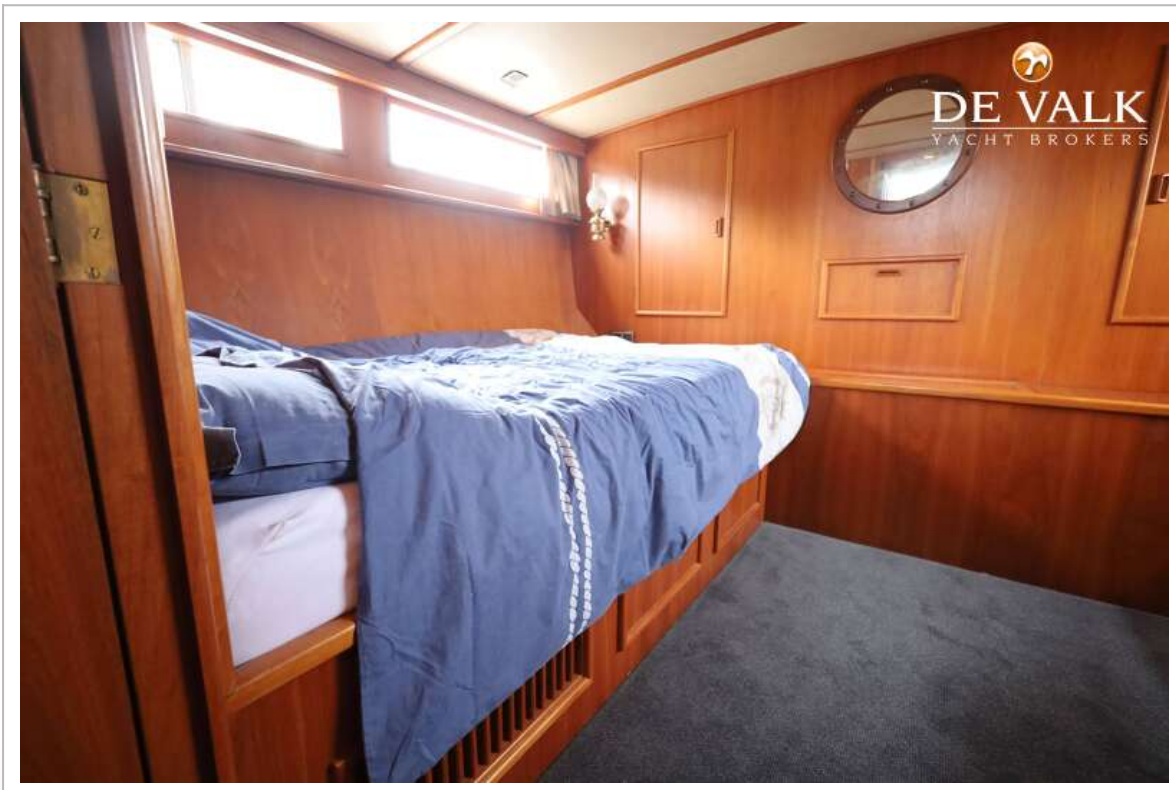
VAN GELDER KRUISER 1750



VAN GELDER KRUISER 1750



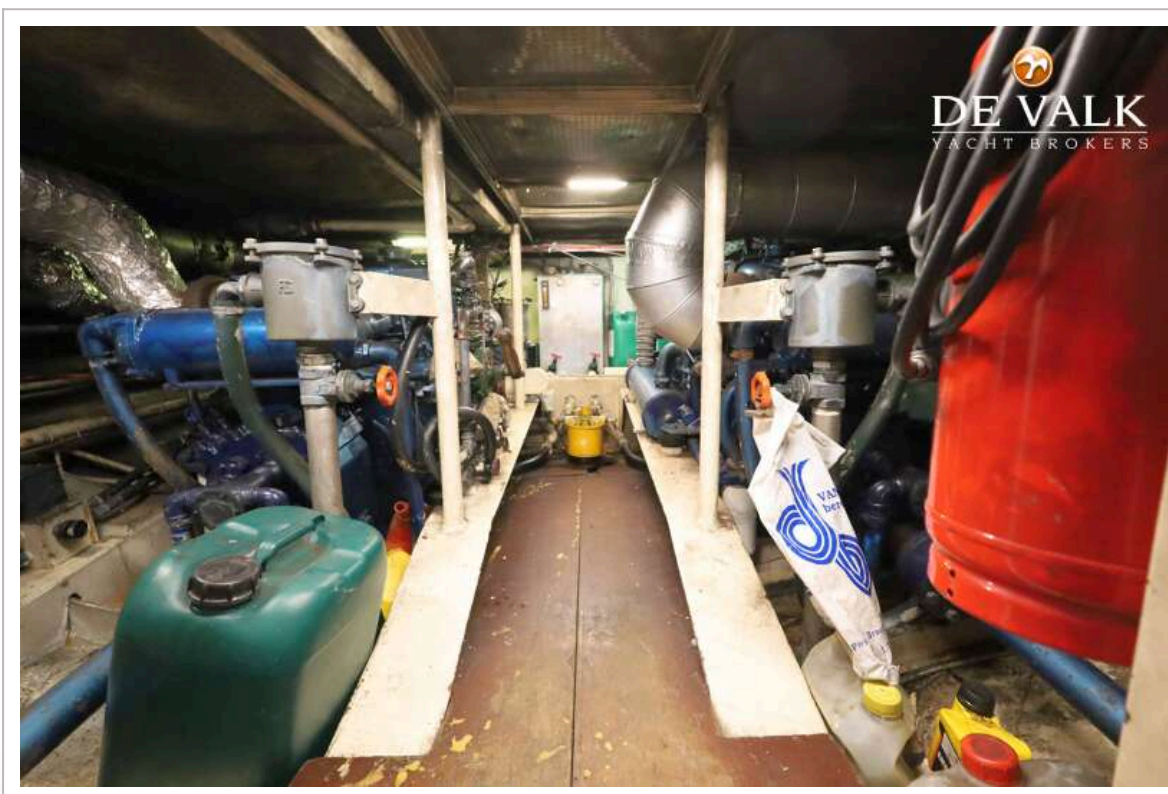
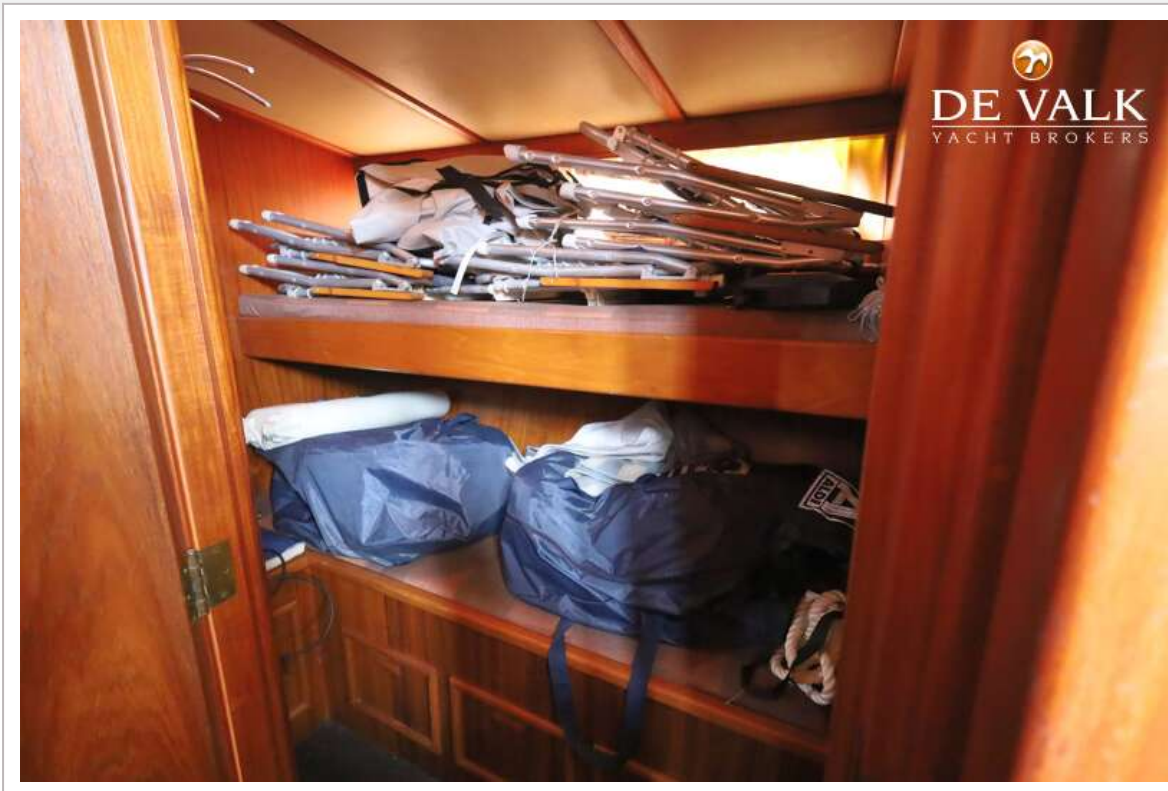
VAN GELDER KRUISER 1750



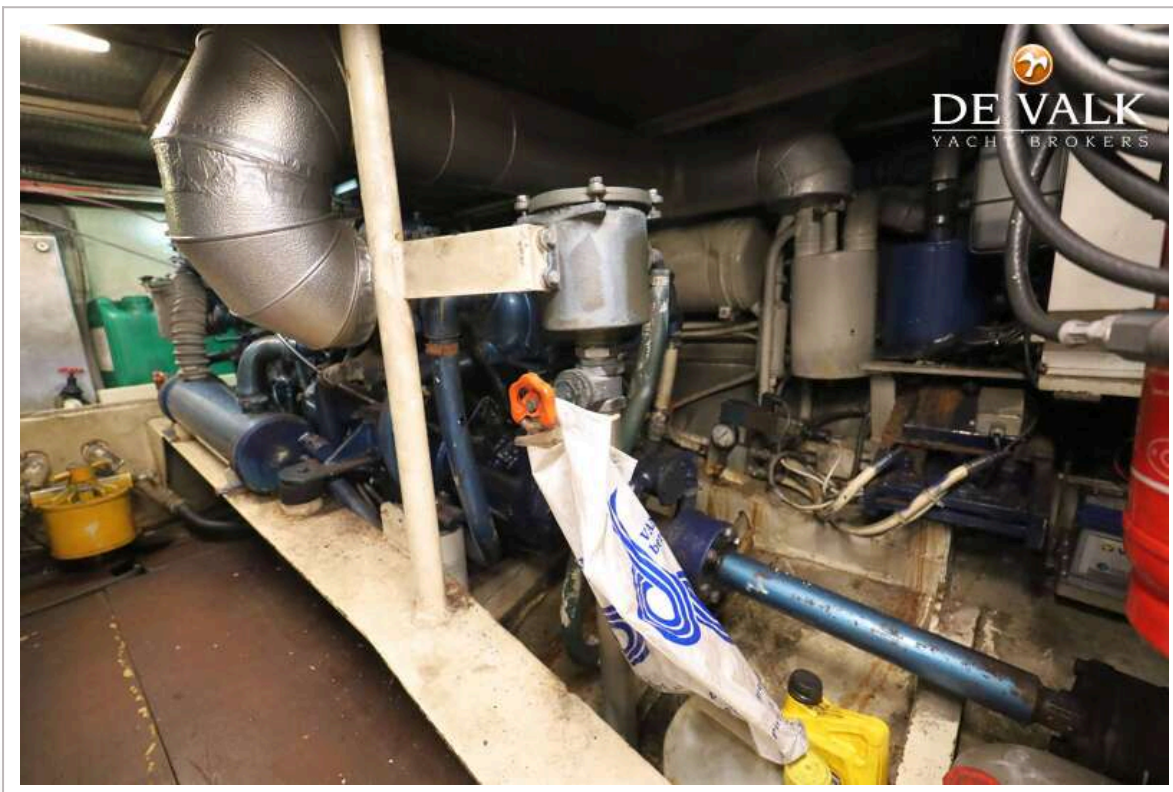
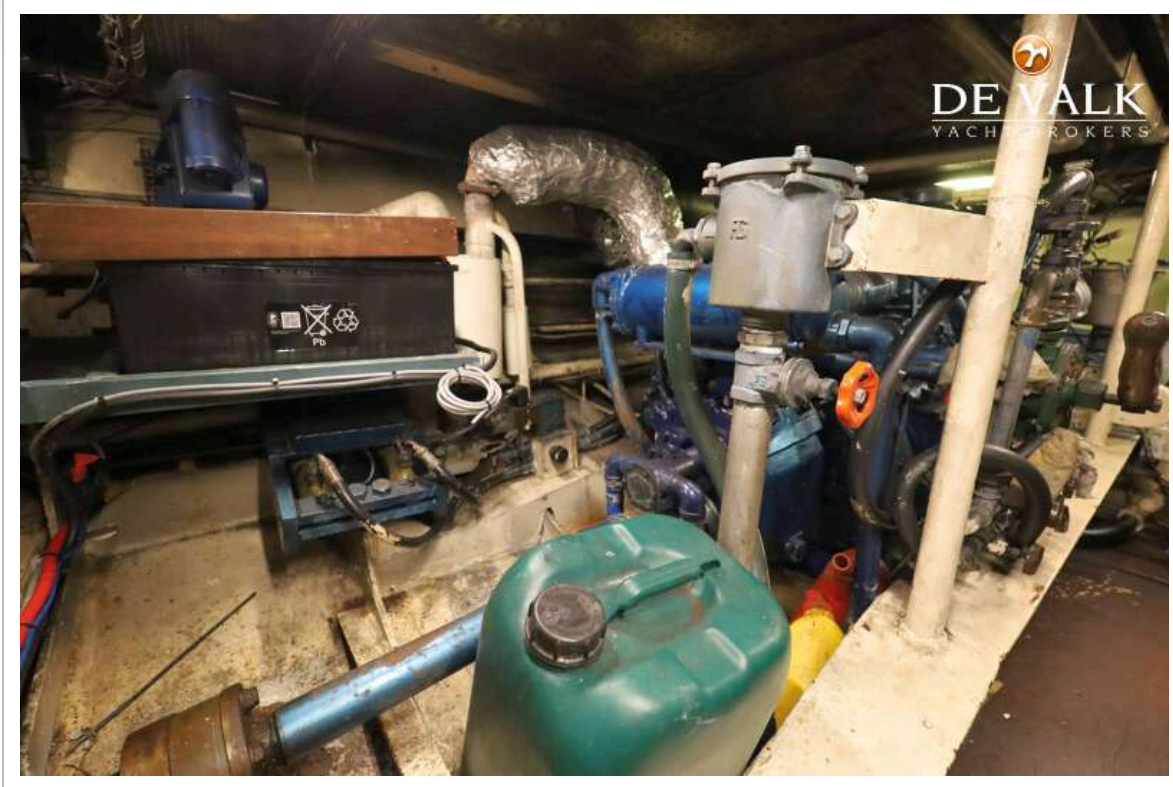
VAN GELDER KRUISER 1750



VAN GELDER KRUISER 1750



VAN GELDER KRUISER 1750



FREQUENTLY ASKED QUESTIONS



DE VALK

What is the reason for selling your yacht?

Unfortunately, we do not have enough time to fully enjoy the boat.

How many owners has your yacht had and when?

The yacht has always been in the family, first my father's, now mine.

What can you tell about the history and cruising area of your yacht?

The entire Netherlands, from the waters of Zeeland to the Wadden and the North Sea, Belgian inland waters and the North Sea, France and Germany (Rhine and Moselle).

Why did you choose this yacht when you bought it?

Solid, Spacious and beautiful appearance.

What is the special meaning of the name of the yacht for you?

Linked to the family, Brand – Astrid – Richard.

Has your yacht ever been used for charter? And if so, when?

No.

What can you tell about the sailing characteristics of your yacht?

Very stable due to stabilizers, easy to steer thanks to 2 motors (propellers) and bow thruster.

What did you do with your yacht during the winter?

Located in fresh water during the winter period (in the harbor of Tholen in recent years).

What kind of maintenance or renewals have been carried out (with documentation as prove)?

New canopy (tent in 2024), renew electrical system and paint hull and superstructure in 2025.

What are, according to you, future points of attention with regard to the maintenance of your yacht?

No special issues, only routine maintenance.

Which four keywords would you use to describe your yacht?

Spacious, stable, comfortable, seaworthy.

