



DE VALK
YACHT BROKERS



STOREBRO ROYAL CRUISER 31 BALTIC



DE VALK
YACHT BROKERS

STOREBRO ROYAL CRUISER 31 BALTIC

KOMMENTARE DES MAKLERS

The Storebro Royal Cruiser 31 Baltic is a timeless Scandinavian classic, renowned for her exceptional craftsmanship, elegant lines, and comfortable cruising capabilities. The current owner has invested significantly in maintaining and upgrading the yacht, ensuring she is presented in excellent condition. Powered by two reliable Volvo Penta diesel engines, she offers dependable performance and confident handling. A well-maintained example, ready for enjoyable cruising.

Jochem Heijermans

TECHNISCHE DATEN

| | | | |
|----------------------|-------------------------------------|-------------------|-----------------------------------|
| Maße | 9.30 x 3.20 x 0.95 (m) | Werft | Storebro Bruks AB |
| Baujahr | 1980 | Kabinen | 2 |
| Material | GFK | Kojen | 4 |
| Motor(en) | 2 x Volvo Penta TMD40 diesel | PS/kW | 2 x 125.00 (PS), 92.00 (kW) |
| Angebotspreis | € 74.500 (MwSt. Mehrwertsteuerfrei) | Liegeplatz | elsewhere / nicht im Verkaufsbüro |

KONTAKT

| | | | |
|---------------------|--|----------------|------------------------|
| Verkaufsbüro | De Valk Sint Annaland B.V. | Telefon | +31 166 601 000 |
| Adresse | Koelhuisweg 4 4697 RM Sint Annaland NL | E-Mail | sintannaland@devalk.nl |

HAFTUNGSAUSSCHLUSS

Diese Angaben erfolgen nach bestem Wissen, können jedoch nicht garantiert werden.



STOREBRO ROYAL CRUISER 31 BALTIC

ALLGEMEIN

| | |
|--------------------------------|--|
| Modell | STOREBRO ROYAL CRUISER 31 BALTIC |
| Typ | Motoryacht |
| Rumpflänge (m) | 9,30 |
| Wasserlinienlänge (m) | 8,05 |
| Breite (m) | 3,20 |
| Tiefgang (m) | 0,95 |
| Durchfahrtshöhe (m) | 2,80 |
| Stehhöhe (m) | 1,83 |
| Baujahr | 1980 |
| Lancierung | 1986 |
| Werft | Storebro Bruks AB |
| Land | Schweden |
| Entwerfer | J.H. Lindblom/Royal Swedish Navy |
| Rumpfmateriäl | GFK |
| Rumpffarbe | Weiß |
| Rumpfform | Deep-V |
| Material Aufbauten | Mahagoni Complete new pilothouse 2022-2024 |
| Stossliste | Gummi |
| Deckmaterial | GFK |
| Deck Finish | Antirutsch Belag (painted 2024) |
| Deck Finish Aufbauten | gemalt |
| Pflicht Bedeckung | Woodprint |
| Antifouling (Jahr) | 2026 |
| Fenster Einfassung | Aluminium |
| Fenster Material | Sicherheitsglas |
| Isolation | Engine room sound insulation new 2025 |
| Treibstofftank (Liter) | Edelstahl 2 x 325 |
| Trinkwassertank (Liter) | Kunststoff 2 x 140 |
| Radsteuerung | mechanisch (new steering wheel 2025) |
| Weitere Info Rumpf | Underwaterhull new primer 2021 |



STOREBRO ROYAL CRUISER 31 BALTIC

Weitere Info

Extra cleats placed 2024

UNTERKUNFT

| | |
|---------------------|--|
| Kabinen | 2 |
| Kojen | 4 |
| Fussboden | Holzabdruck (new floors throughout 2023) |
| Salon | ja |
| Standhöhe Salon (m) | 1,83 |
| Schiebedach | 2 x |
| Heizung | Diesel Heißluft Planar (2023) |
| Achterkabine | ja |
| Dinette | ja |
| Kombüse | ja |
| Arbeitsfläche | Kunststoff |
| Spülbecken | Edelstahl |
| Herd | Gas 2 burner (new, need to be installed) |
| Kuhlschrank | ja |
| Warmwasser System | 220V + Motor |
| Wasserdruck System | elektrisch |
| Eignerkabine | V-Bett |
| Länge Bett (m) | 1,95 |
| Badezimmer | gemeinsam |
| Toilet | gemeinsam |
| Toilette System | handbetrieb |
| Handwaschbecken | im Badezimmer |
| Dusche | gemeinsam |
| Gästekabine 1 | Zwei Einzelbetten |
| Länge Bett (m) | 2,00 |

MASCHINEN

| | |
|-------------|---|
| Motoranzahl | 2 |
|-------------|---|



STOREBRO ROYAL CRUISER 31 BALTIC

| | |
|-------------------------------------|--|
| Marke | Volvo Penta |
| Typ | TMD40 |
| PS | 125 |
| kW | 92 |
| Kraftstoffart | Diesel |
| Installiert im Jahr | 1980 |
| Kühlungssystem Motor | indirekte Wärmetauscher |
| Antrieb | Schraubenwelle |
| Motor bedienung | Seilzug Kabel (2026) |
| Propeller Typ | fest |
| Propellerblätter | 5 |
| Material Propellerwelle | ja |
| Hand Bilgenpumpe | ja |
| Elektrische Bilgenpumpe | (2024) |
| Elektrische Anlage | 12V/220V |
| Starterbatterie | ja |
| Versorgungsbatterie | ja |
| Batterie Ladegerat/Umwandler | Victron MultiPlus Compact 12/2000/80 (2023/2024) |
| Landstrom | mit Kabel |
| Weitere Info | Through-hull fittings and seacocks replaced 2021 |
| Weitere Info | Alternators new 2025 |

NAVIGATION

| | |
|-------------------------------|----------------------|
| Kompass | ja |
| Tiefenanziege/Logge | Raytheon ST46 Bidata |
| UKW | Raymarine (2023) |
| Radar | Raytheon |
| AIS Transponder | Raymarine AIS 700 |
| Navigation Beleuchtung | ja |

AUSRÜSTUNG



STOREBRO ROYAL CRUISER 31 BALTIC

| | |
|-----------------------------|---|
| Kuchenbude | (2025) |
| Cockpit Polster | ja |
| Cockpit Sessel | Foldable |
| Badeplattform | ja |
| Badeleiter | Edelstahl |
| Heckdusche | Hot + cold (2025) |
| Anker | CQR Pflugschar |
| Ankerkette | (2025) |
| Ankerwinde | elektrisch Lofrans with remote control (2025) |
| See Reling | Edelstahl |
| Zupackenschiene (aufbauten) | Holz (2026) |
| Scheibenwischer | 2 x (2026) |
| Radar Reflektor | ja |
| Fenderkissen | ja |
| Festmacher | ja |
| Radio | ja |
| Lautsprecher im Pflicht | ja |
| Lautsprecher im Salon | ja |



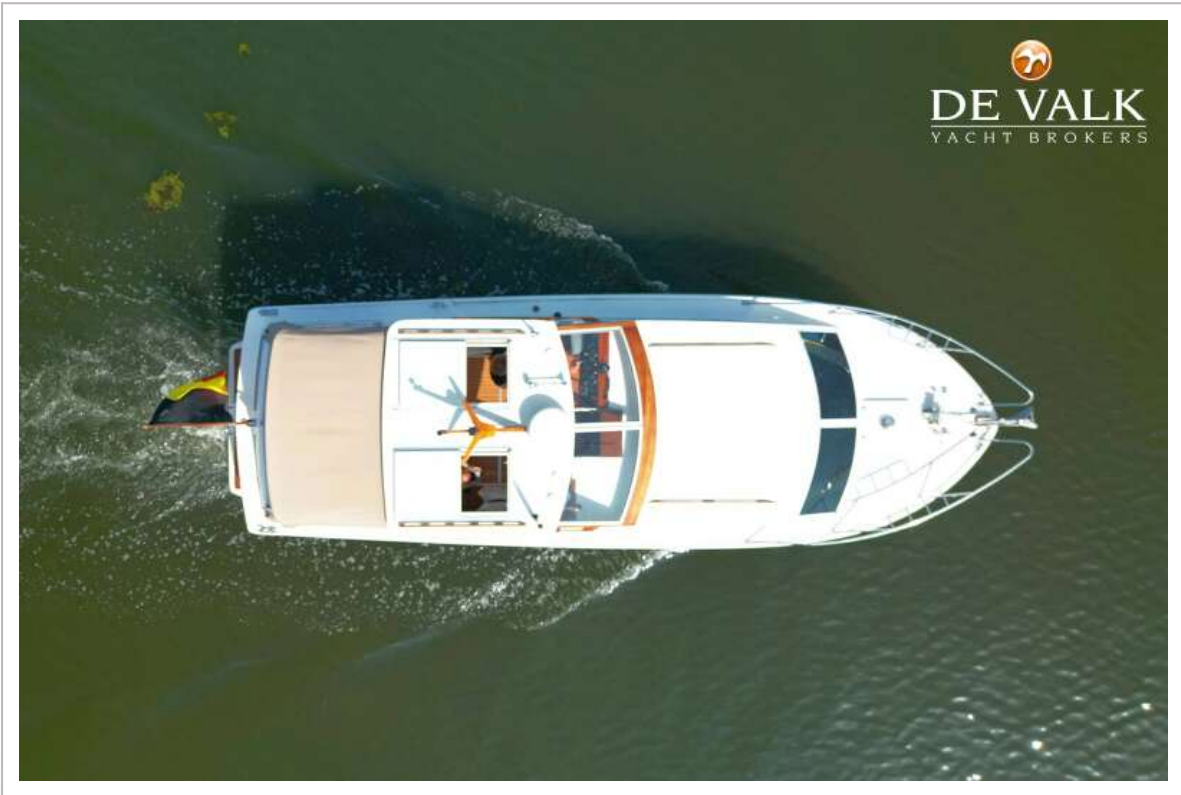
STOREBRO ROYAL CRUISER 31 BALTIC



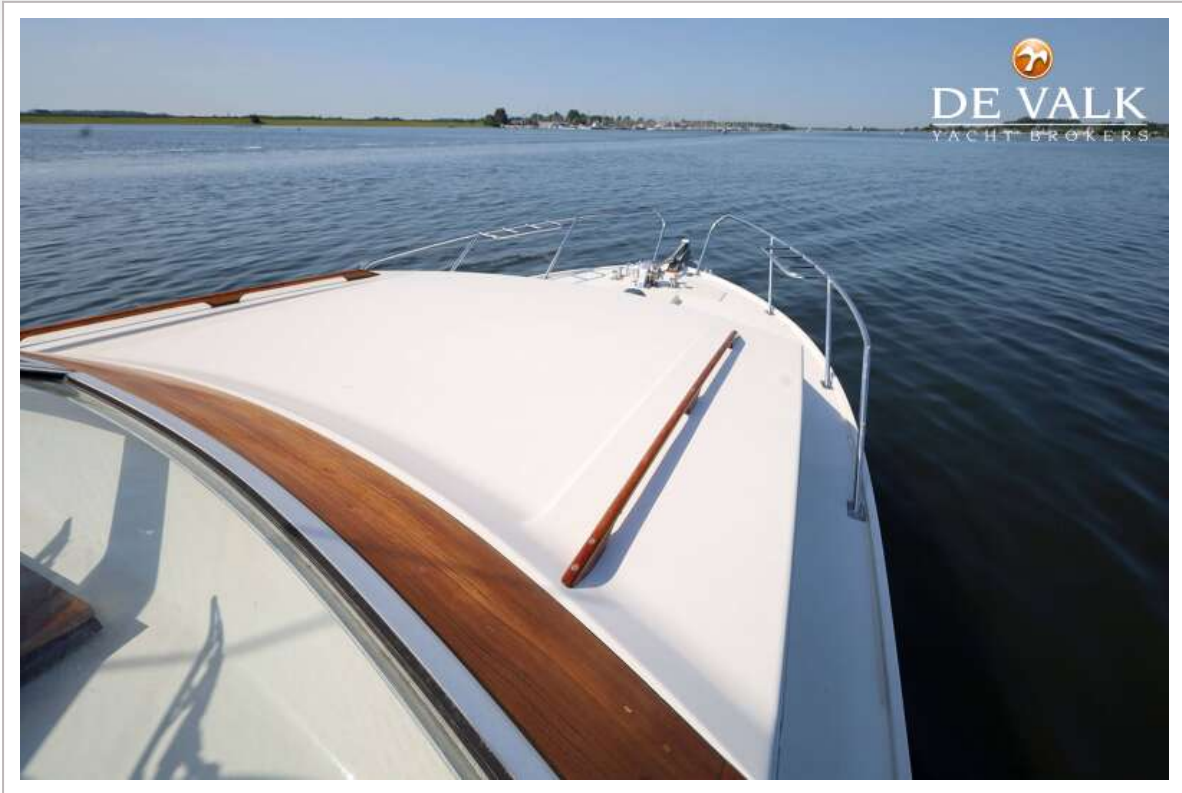
STOREBRO ROYAL CRUISER 31 BALTIC



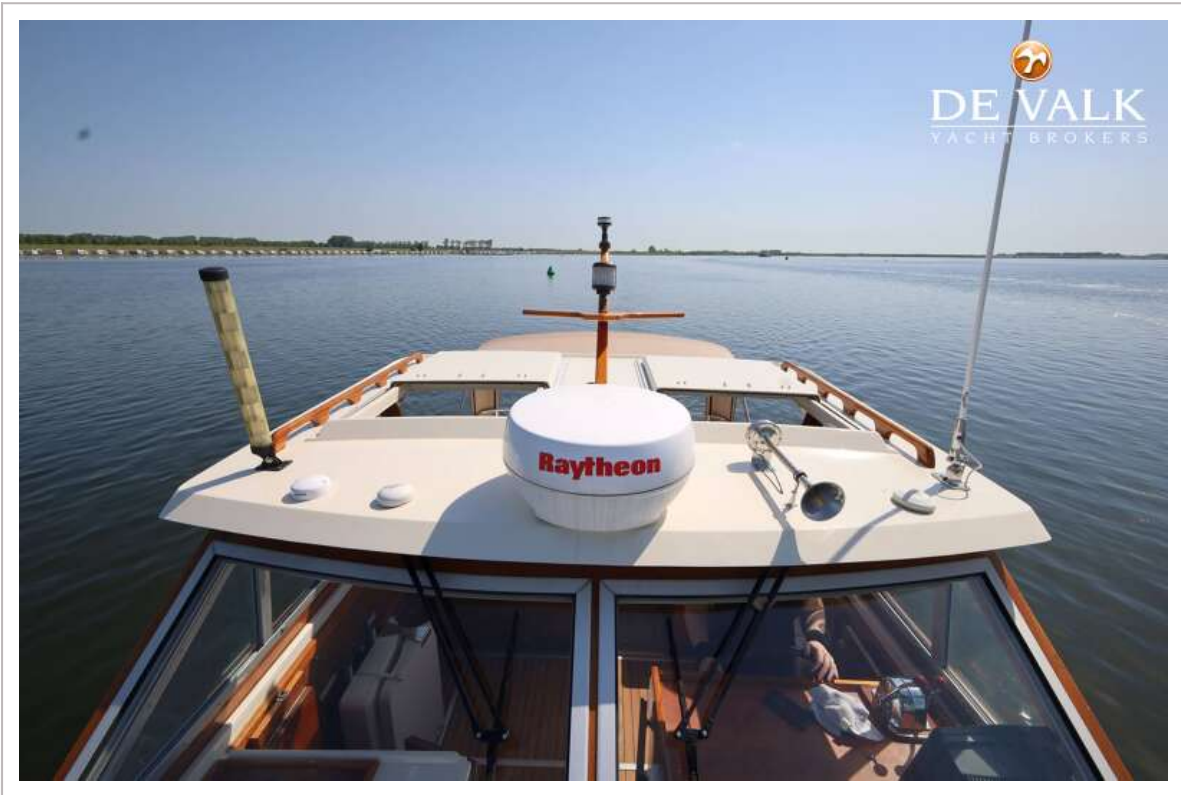
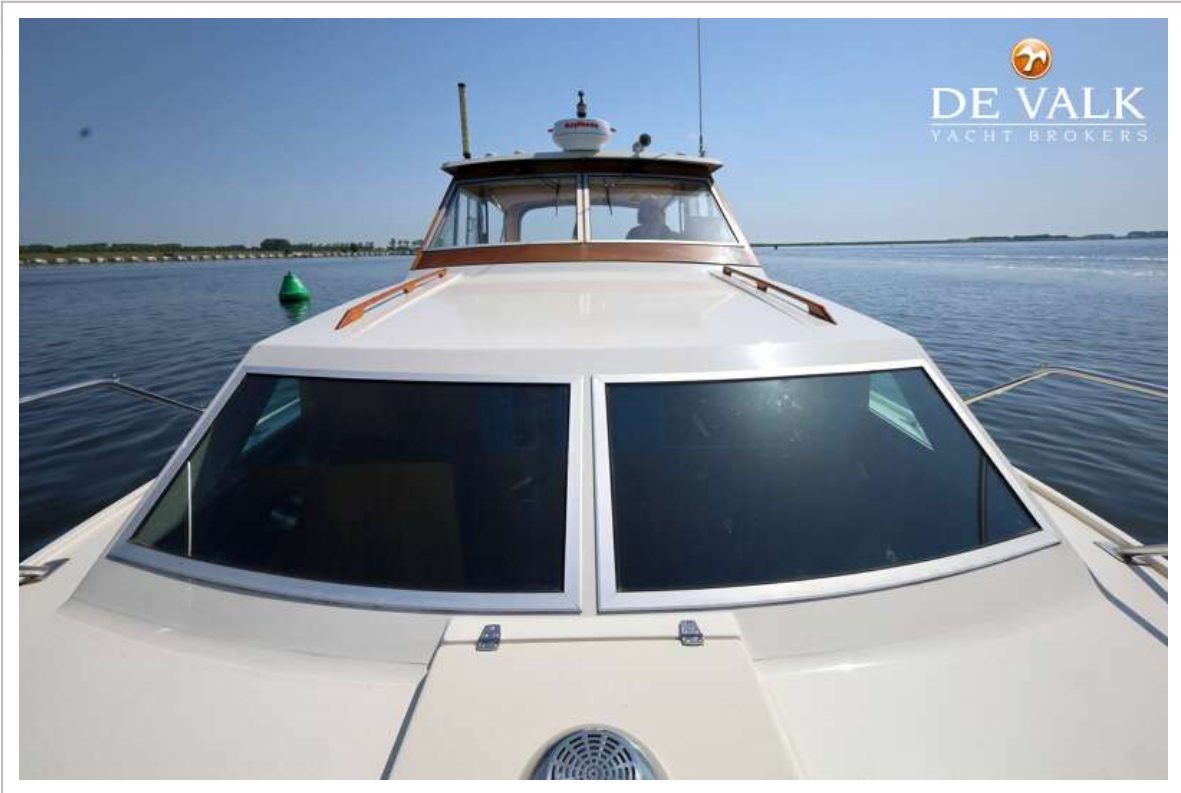
STOREBRO ROYAL CRUISER 31 BALTIC



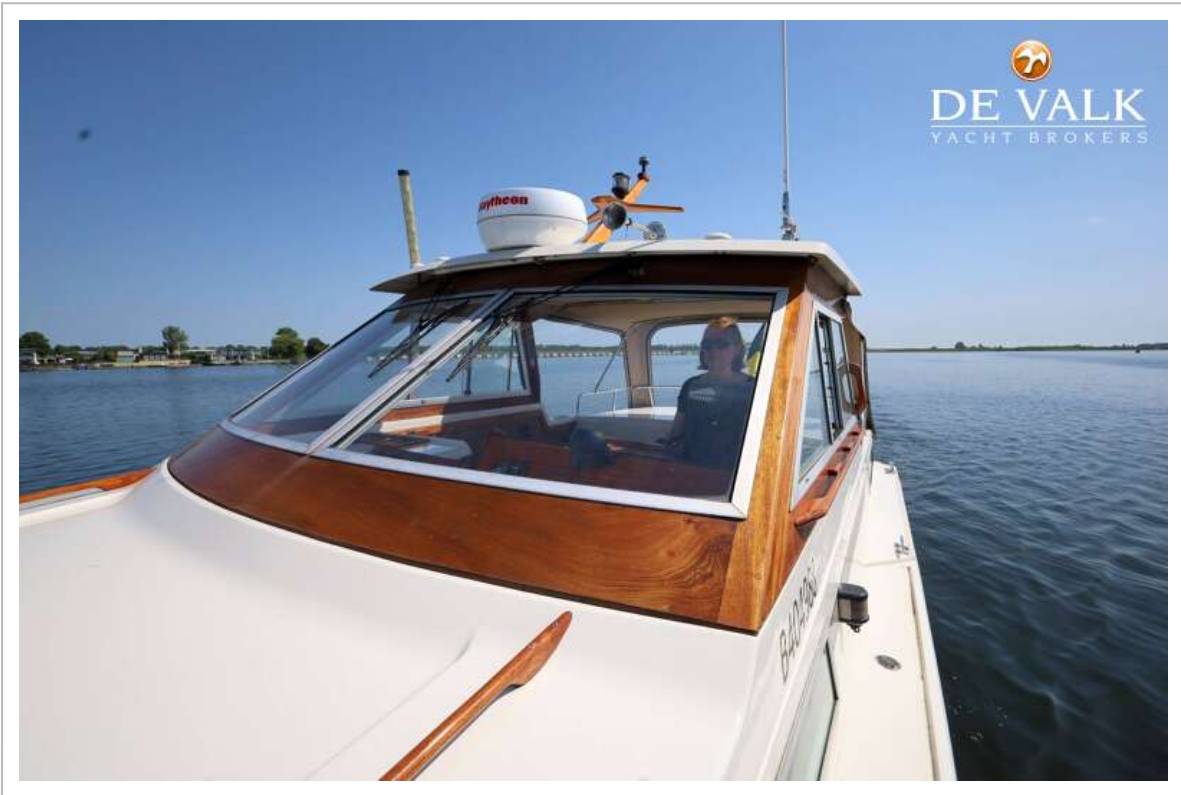
STOREBRO ROYAL CRUISER 31 BALTIC



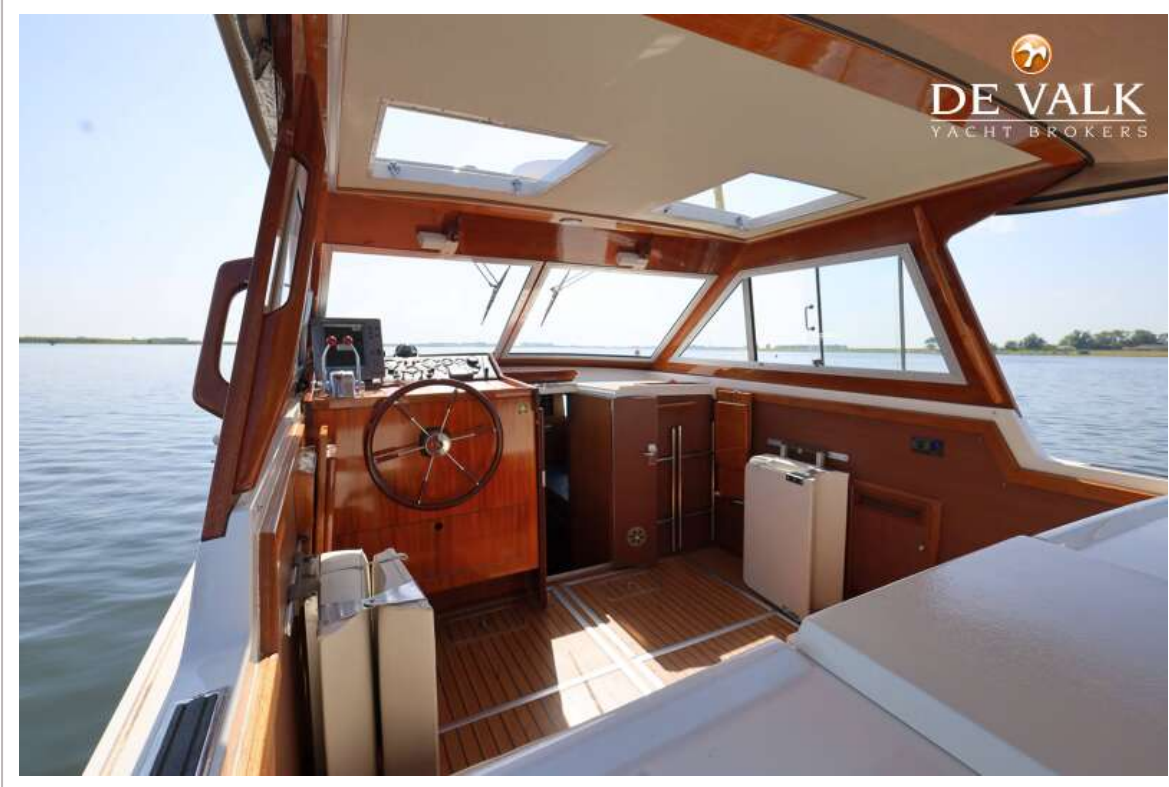
STOREBRO ROYAL CRUISER 31 BALTIC



STOREBRO ROYAL CRUISER 31 BALTIC



STOREBRO ROYAL CRUISER 31 BALTIC



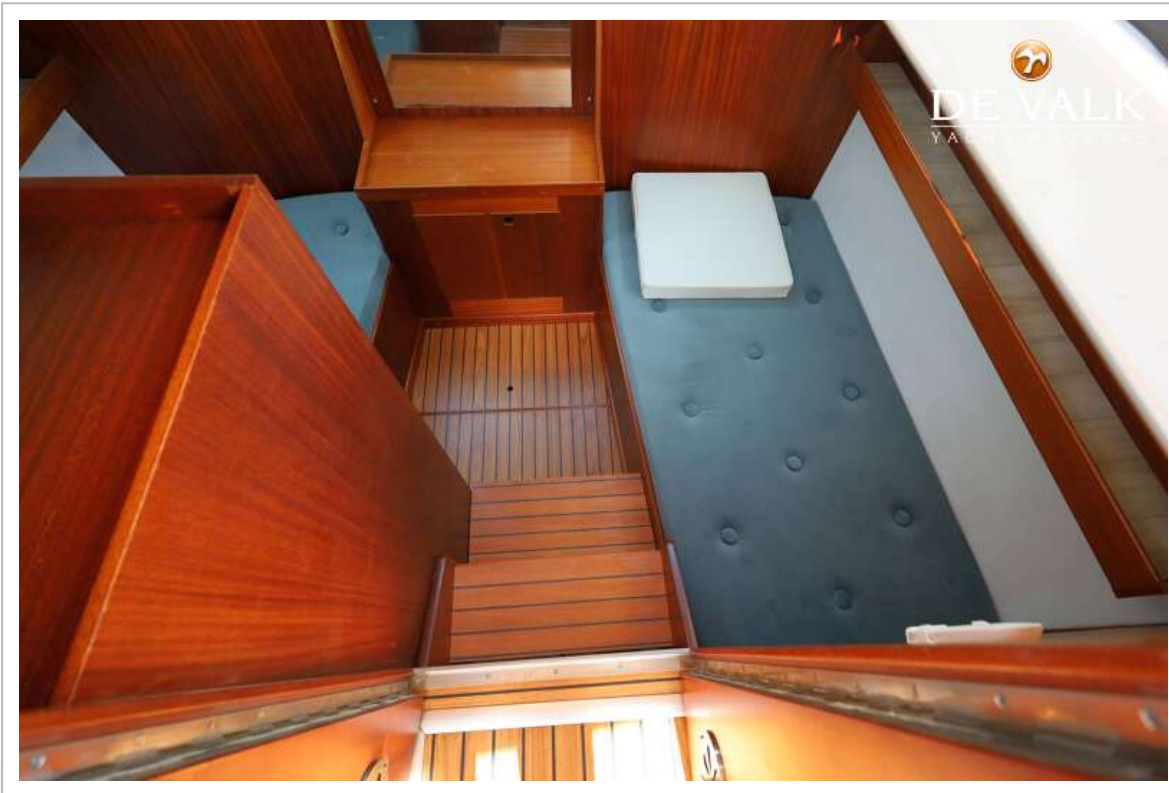
STOREBRO ROYAL CRUISER 31 BALTIC



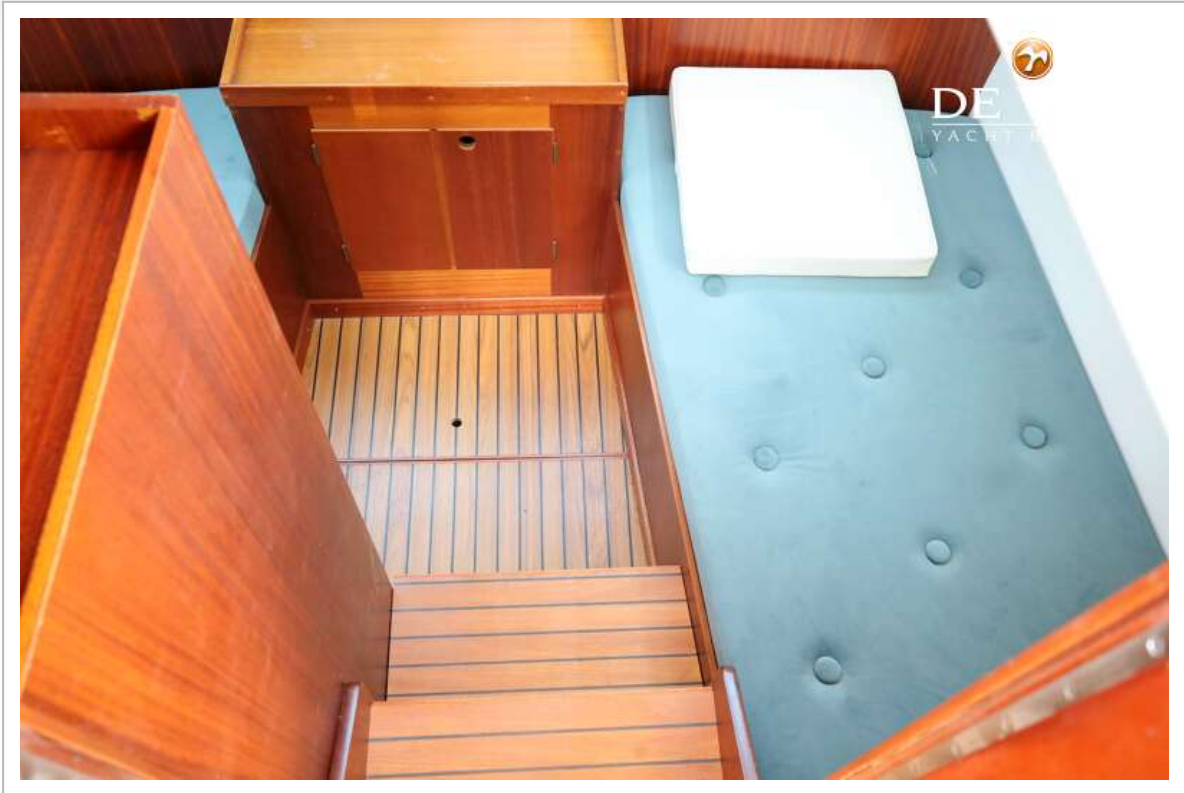
STOREBRO ROYAL CRUISER 31 BALTIC



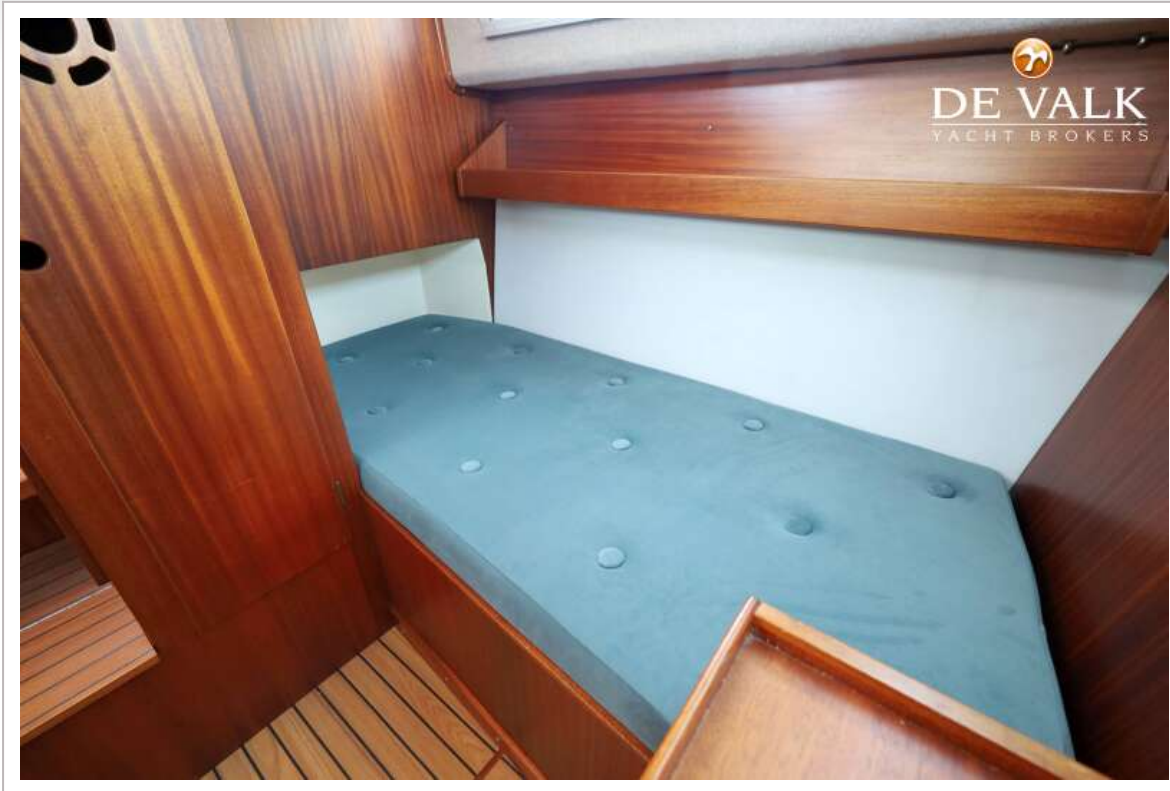
STOREBRO ROYAL CRUISER 31 BALTIC



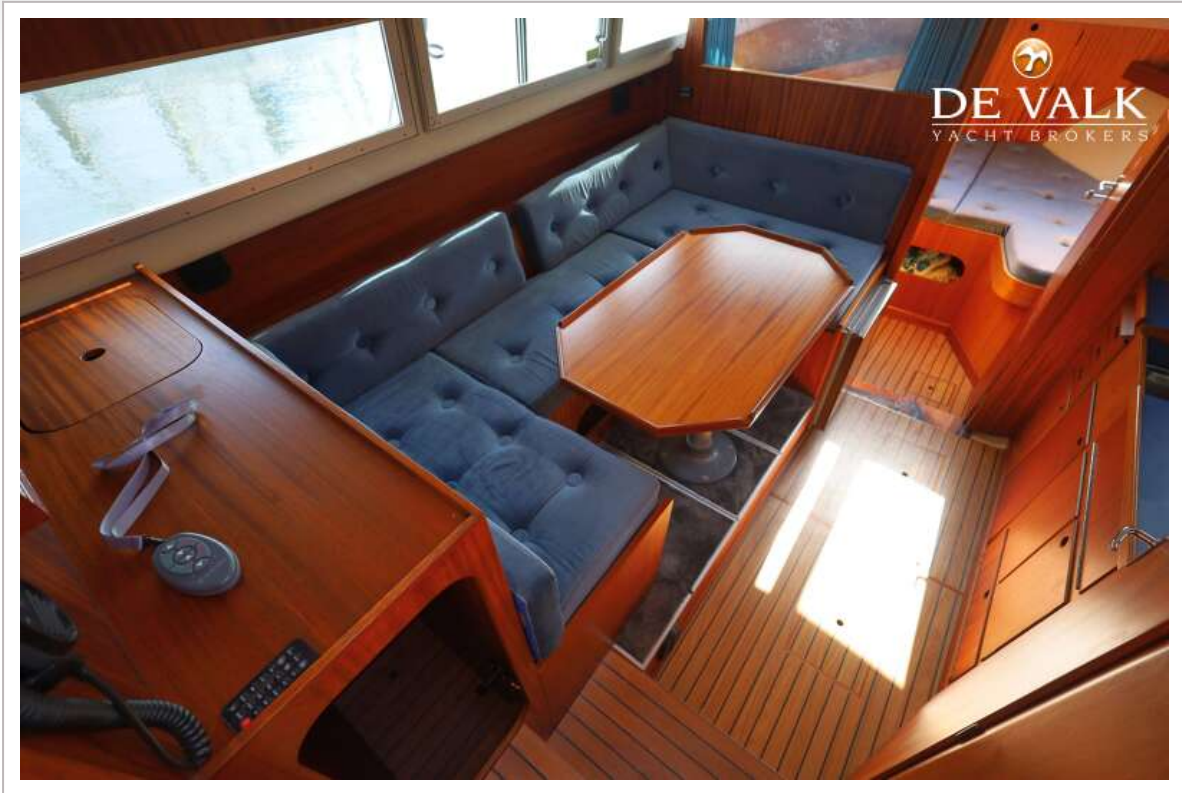
STOREBRO ROYAL CRUISER 31 BALTIC



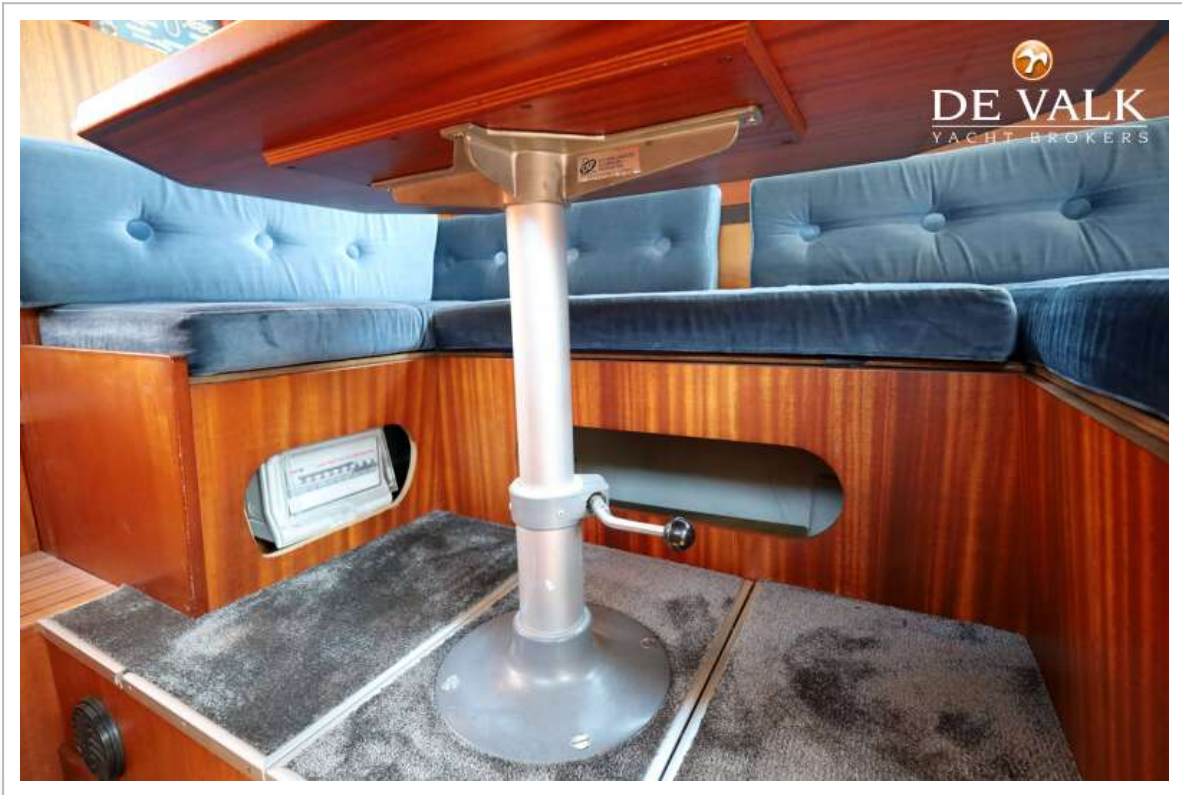
STOREBRO ROYAL CRUISER 31 BALTIC



STOREBRO ROYAL CRUISER 31 BALTIC



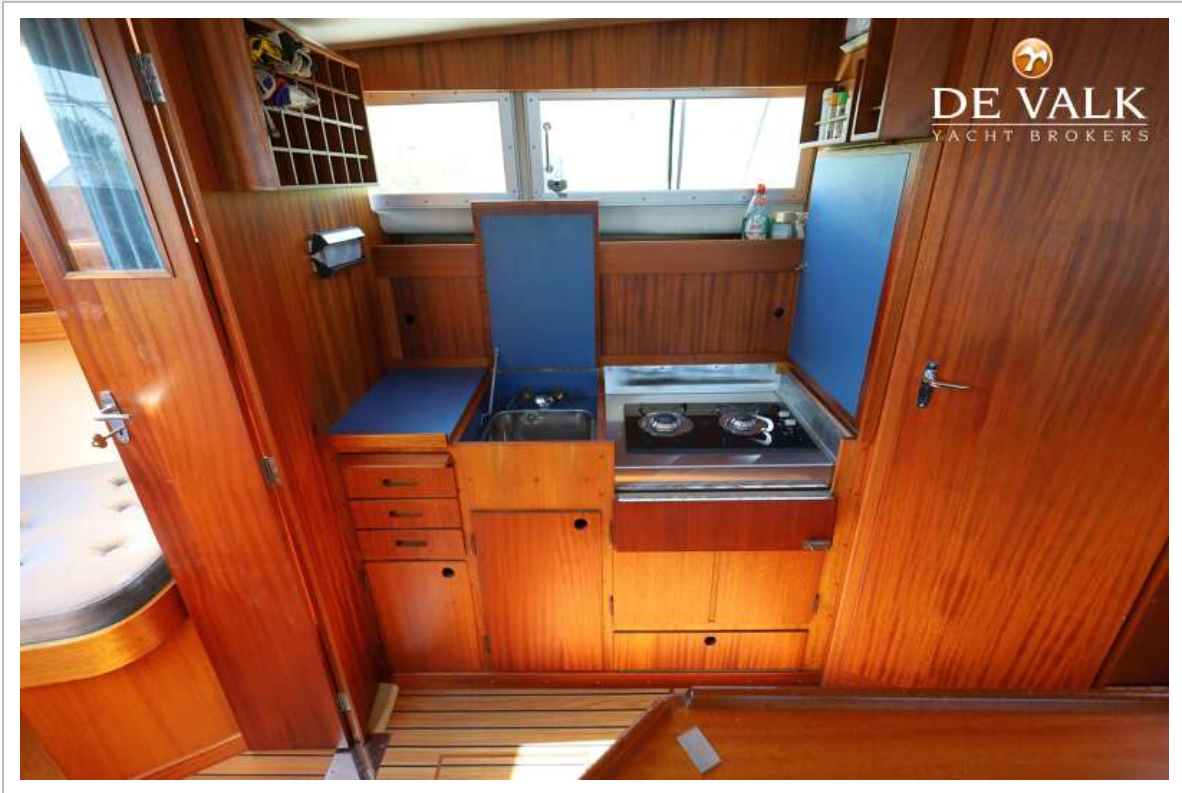
STOREBRO ROYAL CRUISER 31 BALTIC



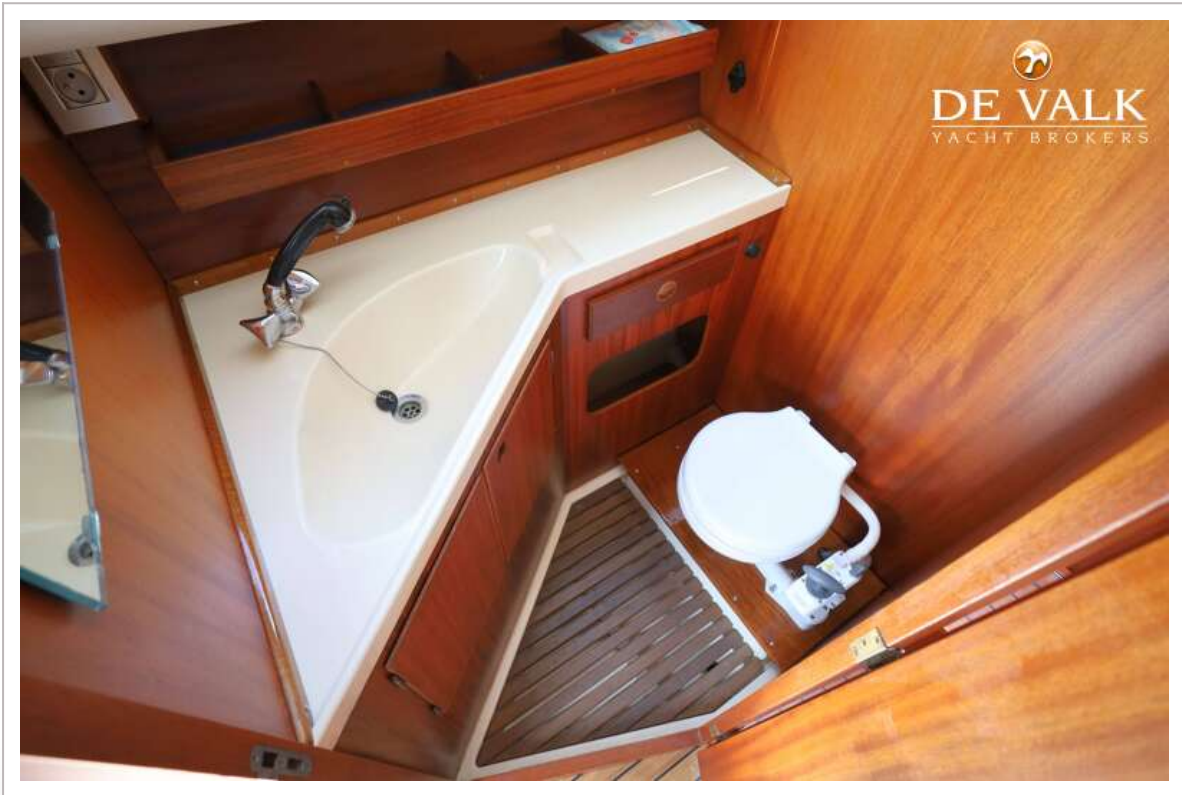
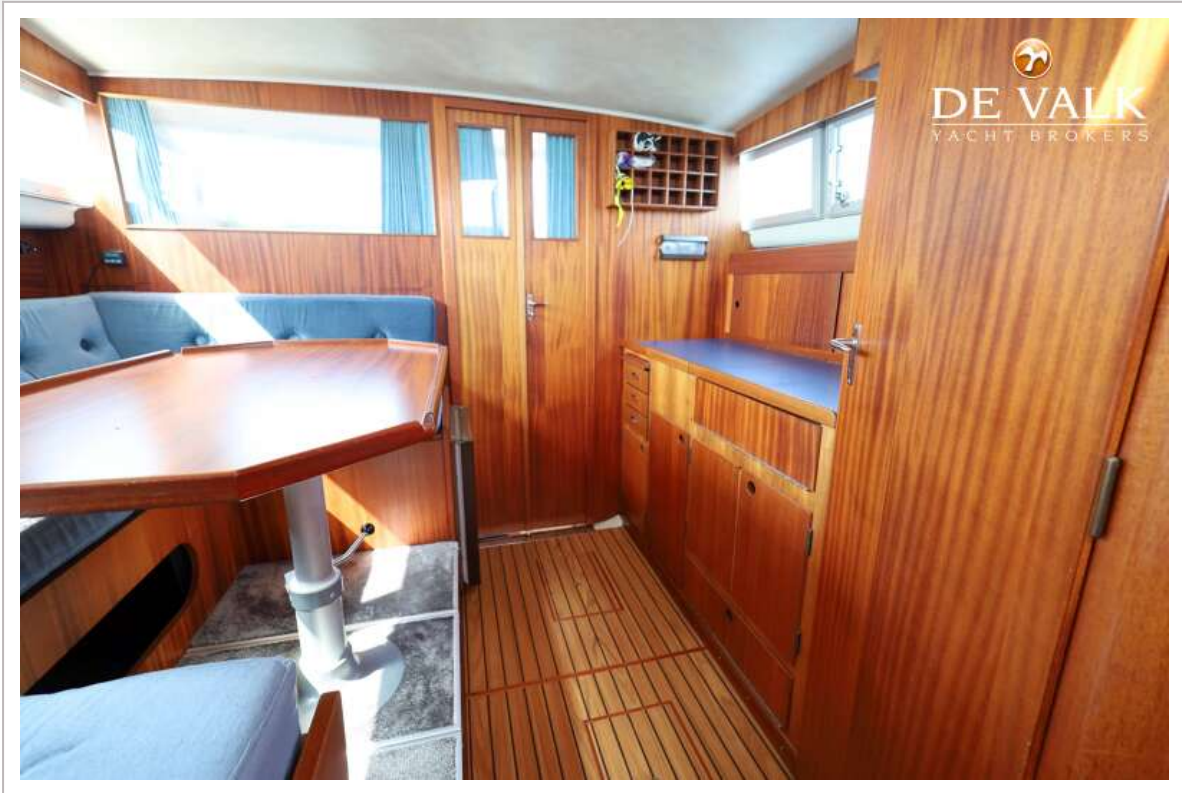
STOREBRO ROYAL CRUISER 31 BALTIC



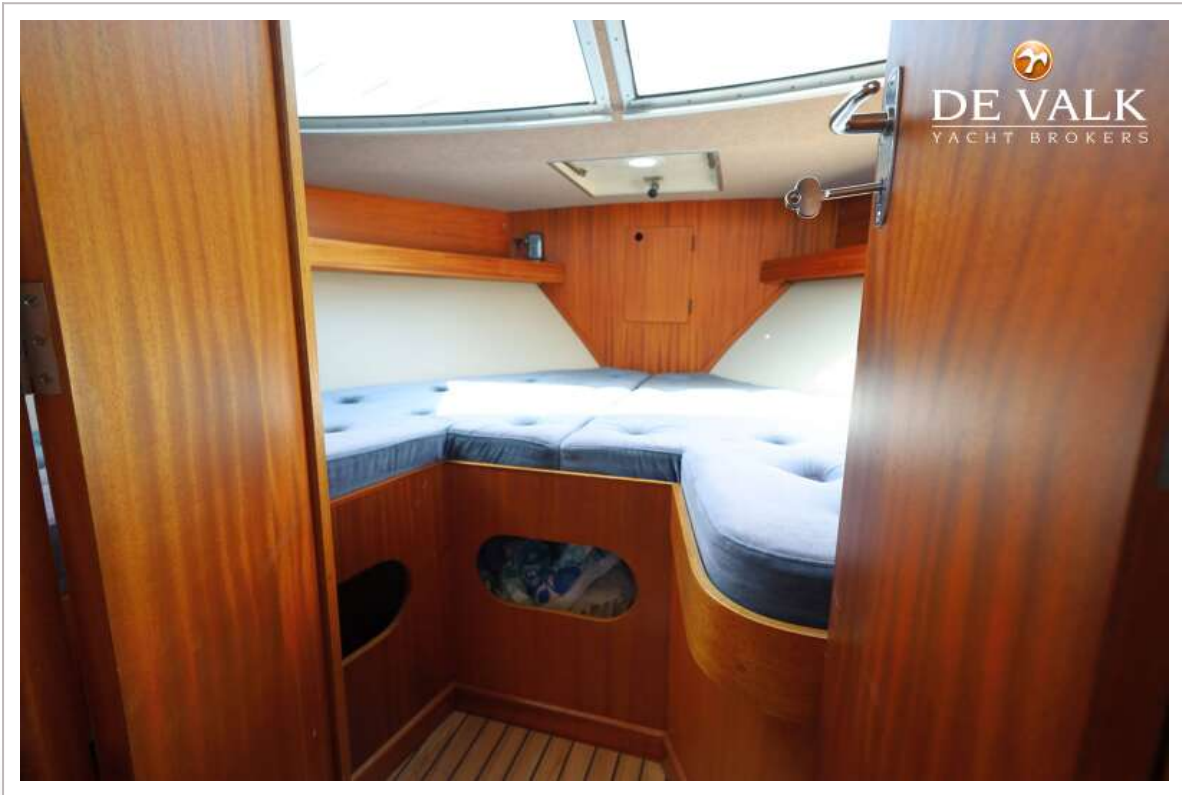
STOREBRO ROYAL CRUISER 31 BALTIC



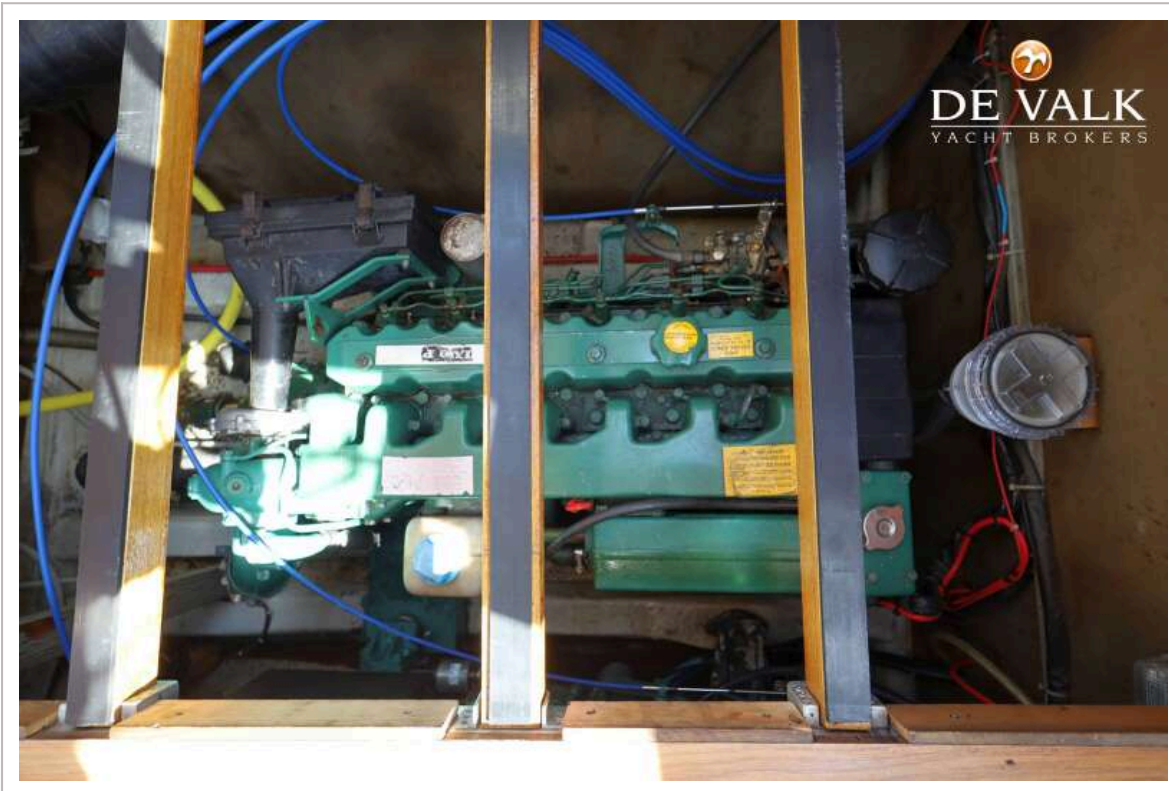
STOREBRO ROYAL CRUISER 31 BALTIC



STOREBRO ROYAL CRUISER 31 BALTIC



STOREBRO ROYAL CRUISER 31 BALTIC



STOREBRO ROYAL CRUISER 31 BALTIC

