



DE VALK  
YACHT BROKERS



## WHARRAM TIKI 30



DE VALK  
YACHT BROKERS

## KOMMENTARE DES MAKLERS

Well-known Wharram Tiki 30 "Mango Elephant", a genuine Wharram combining simplicity, character, and proven seaworthiness. Built on a solid foundation and recently upgraded with a brand-new Honda 15 HP four-stroke outboard and new trampolines (yet to be fitted). She requires some light recommissioning before returning to the water, offering an excellent opportunity to acquire an authentic Wharram with great potential. Reluctantly offered for sale by only her third owner due to a change in personal circumstances. Available for viewings by appointment in Tavira, Portugal

*Bouwe van der Plas*

## TECHNISCHE DATEN

<b>Maße</b>	9.14 x 5.00 x 0.50 (m)	<b>Werft</b>	Owner-built to Wharram's original plans
<b>Baujahr</b>	2001	<b>Kabinen</b>	3
<b>Material</b>	Holz-epoxy	<b>Kojen</b>	4
<b>Motor(en)</b>	1 x Honda BF15 petrol	<b>PS/kW</b>	15.00 (PS), 11.04 (kW)
<b>Angebotspreis</b>	€ 33.000 (MwSt. UK Mehrwertsteuer bezahlt)	<b>Liegeplatz</b>	

## KONTAKT

<b>Verkaufsbüro</b>	De Valk Portugal	<b>Telefon</b>	+351 308 812321
<b>Adresse</b>	Edifício Administrativo - Ponta da Areia 8500 - 345 Portimão PT	<b>E-Mail</b>	portugal@devalk.nl

## HAFTUNGS AUSSCHLUSS

Diese Angaben erfolgen nach bestem Wissen, können jedoch nicht garantiert werden.



## ALLGEMEIN

<b>Modell</b>	WHARRAM TIKI 30
<b>Typ</b>	katamaran segelyacht
<b>Rumpflänge (m)</b>	9,14
<b>Breite (m)</b>	5,00
<b>Tiefgang (m)</b>	0,50
<b>Durchfahrtshöhe (m)</b>	12,00
<b>Baujahr</b>	2001
<b>Werft</b>	Owner-built to Wharram's original plans
<b>Land</b>	Vereinigtes Königreich
<b>Entwerfer</b>	James Wharram
<b>Rumpfmateri al</b>	Holz-epoxy
<b>Rumpffarbe</b>	Weiß
<b>Material Aufbauten</b>	Holz
<b>Treibstofftank (Liter)</b>	30
<b>Pinne</b>	ja

## UNTERKUNFT

<b>Kabinen</b>	3
<b>Kojen</b>	4
<b>Herd</b>	Petroleum

## MASCHINEN

<b>Motoranzahl</b>	1
<b>Marke</b>	Honda
<b>Typ</b>	BF15
<b>PS</b>	15
<b>kW</b>	11.04
<b>Kraftstoffart</b>	Benzin
<b>Installiert im Jahr</b>	2026



Überholung im Jahr	New engine, needs to be connected
Höchstgeschwindigkeit (Kn)	7,5
Marschgeschwindigkeit (Kn)	5,5
Antrieb	Außenbord
Solar panele	ja

## NAVIGATION

UKW	Icom VHF DSC Radio with Command Mic (2017)
Autopilot	Tillerpilot electronic steering Raymarine ST1000
Windfahne Steuerung	Seafeather wind vane steering
AIS Empfänger	ICOM MXA-5000
Epirb	ACR Cobham (HRU expiry date April 2028)

## AUSRÜSTUNG

Spritzverdek	In good condition, but needs some refurbishing (zippers)
Kuchenbude	In good condition, but needs some refurbishing (zippers)
Anker	Rocna and Plough anchors with warp and chain
Rettungsinsel	Container 4 persons, next check 2027
Weitere Info	New trampolines, to be fitted

## RIGG

Rig	ja
Stehendes Gut	Drahtseil Forestay 2017, bridle 2014, shrouds 2015, lazy forestay 2011
Material Mast	ja
Großsegel	2016
Fock III	Hanked no.3 jib, for strong winds
Genua	2017
Rollreffanlage	CDI furler reconditioned in 2017
A-symmetrischen Spi	Asymmetric spinnaker (2001) with snuffer (2016)



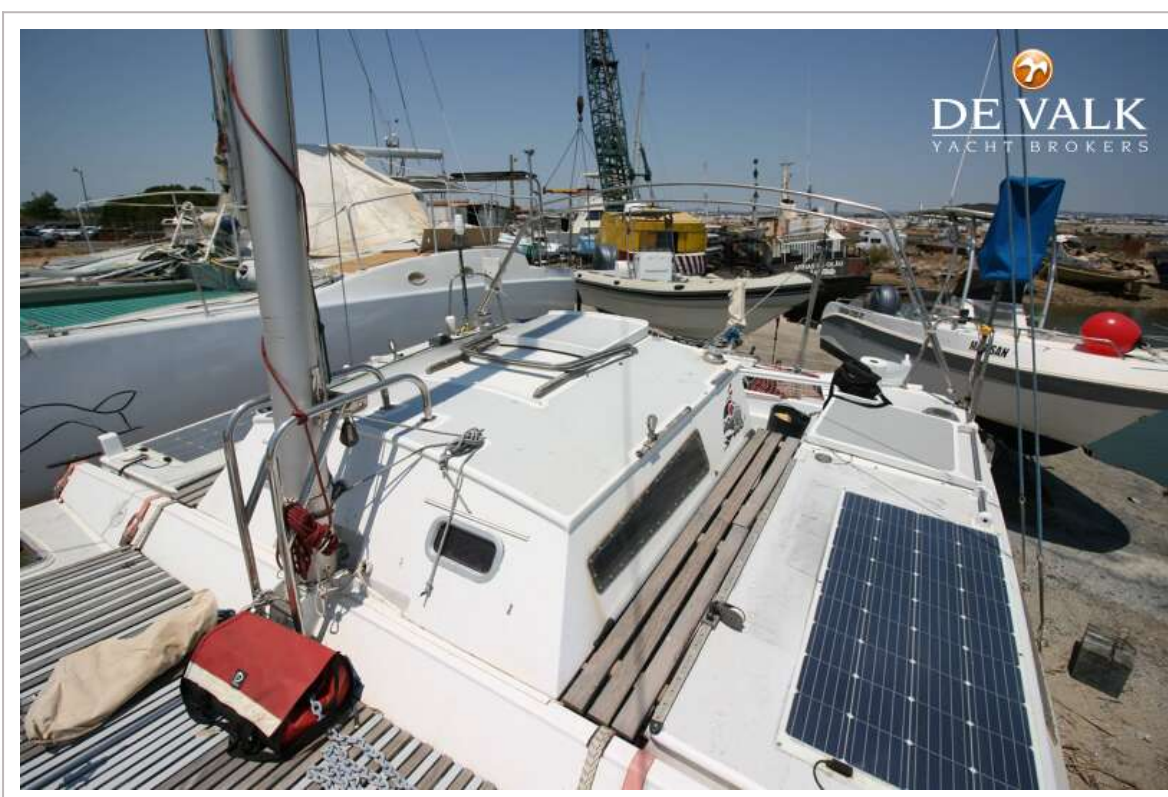
Sturmfock

Storm sails





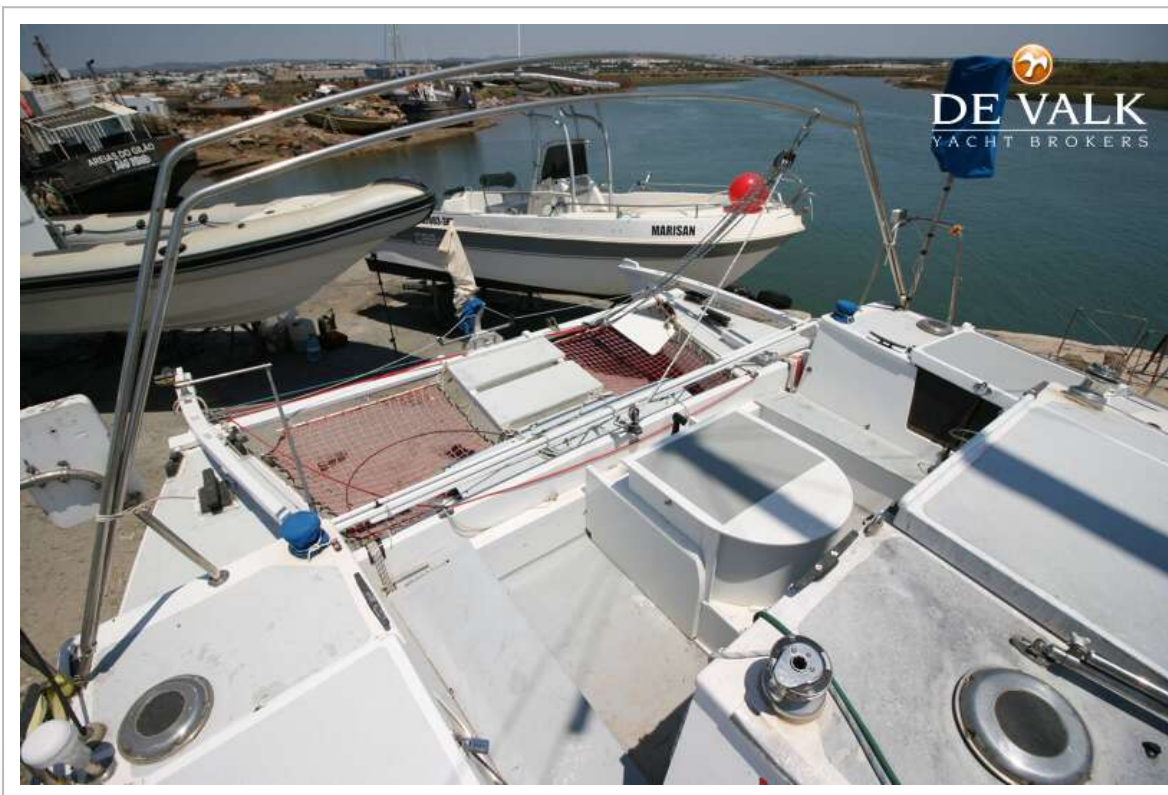
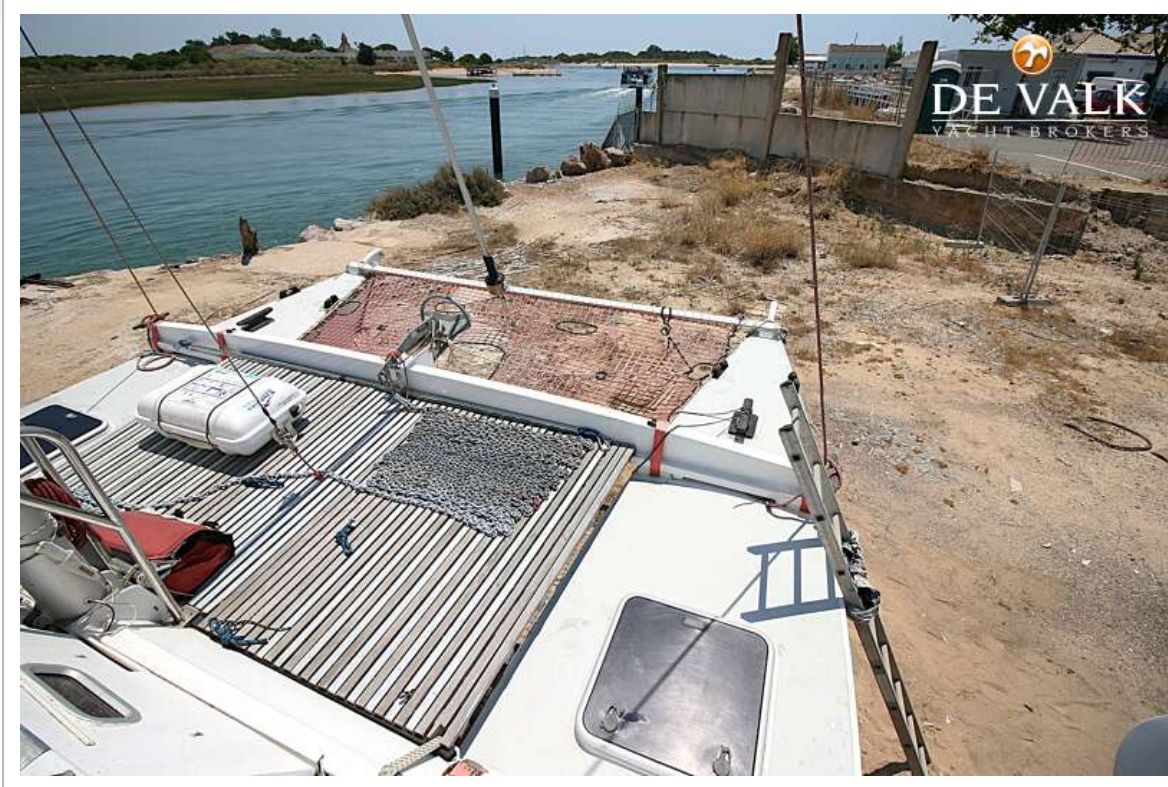
# WHARRAM TIKI 30



# WHARRAM TIKI 30



# WHARRAM TIKI 30





# WHARRAM TIKI 30



# WHARRAM TIKI 30



# WHARRAM TIKI 30



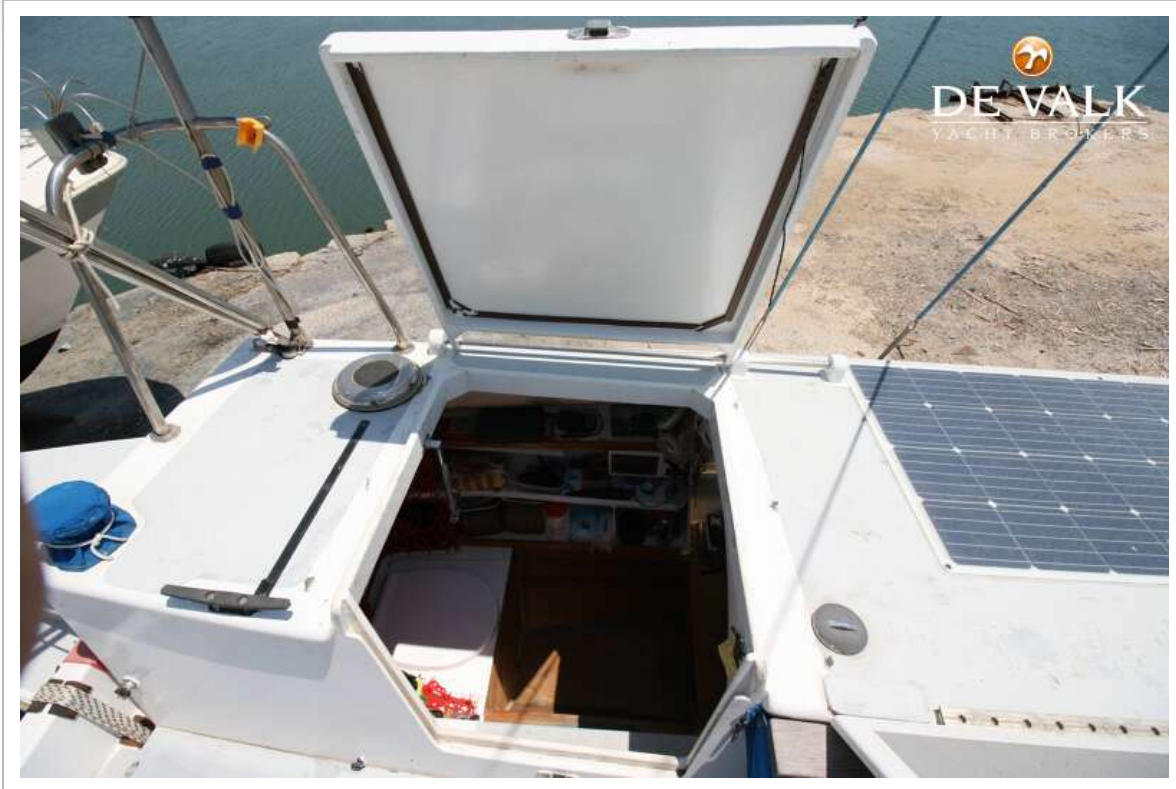
# WHARRAM TIKI 30



# WHARRAM TIKI 30



# WHARRAM TIKI 30



# WHARRAM TIKI 30

