



## STENTOR 1500

# STENTOR 1500

## BROKER'S COMMENTS

Stentor 1500 "Marea III" is built in 1997 by Stentor Yachts. This long distance seagoing steel motor yacht is equipped for a long and comfortable stay on board. Equipped with one Caterpillar 180 hp diesel engine, hydraulic bow- and sternthruster, stabilizers, double glazed windows and Kabola central heating. Furthermore she is easily capable to cross the rough seas as well as to pass through the French Canals to visit the Mediterranean. Viewing possible in our sales office in Sneek!

*Arne Doodeman*

## SPECIFICATIONS

<b>Dimensions</b>	14.99 x 4.65 x 1.35 (m)	<b>Builder</b>	Stentor Yachts
<b>Built</b>	1997	<b>Cabins</b>	2
<b>Material</b>	Steel	<b>Berths</b>	6
<b>Engine(s)</b>	1 x Caterpillar 3208-180 diesel	<b>Hp/Kw</b>	180.00 (hp), 132.30 (kw)
<b>Asking price</b>	sold (VAT )	<b>Lying</b>	at sales office

## CONTACT

<b>Sales office</b>	De Valk Sneek	<b>Telephone</b>	+31 (0)515 42 80 30
<b>Address</b>	Zwolsmanweg 7 8606 KC Sneek NL	<b>E-mail</b>	sneek@devalk.nl

## DISCLAIMER

These particulars are given in good faith as supplied but cannot be guaranteed.



## GENERAL

Model	STENTOR 1500
Type	motor yacht
LOA (m)	14,99
Beam (m)	4,65
Draft (m)	1,35
Air draft (m)	3,40
Year built	1997
Builder	Stentor Yachts
Country	Romania
Designer	Vripack
Displacement (t)	39
Hull material	steel
Hull colour	blue
Hull shape	multi hard chine
Superstructure material	steel
Rubbing strake	stainless steel
Deck material	steel
Deck finish	Painted aluminium plates
Cockpit deck finish	teak
Antifouling (year)	2015
Window frame	aluminium
Window material	double glazing
Mast can be lowered	hydraulic
Fuel tank (litre)	steel 3800 l. in 2 tanks
Level indicator (fuel tank)	Tank and fuel lines cleaned in 2011 Tanktender.
Freshwater tank (litre)	2000 l.
Blackwater tank (litre)	400 l.
Greywater tank (litre)	200 l.
Wheel steering	hydraulic
Inside helm position	yes



# STENTOR 1500

Outside helm position	hydraulic
Extra info	teak aft deck renovated in 2013

## ACCOMMODATION

Cabins	2
Berths	6
Interior	mahogany
Floor	teak and holly
Aft deck	yes
Saloon	yes
Heating	central heating Kabola B12
Air-conditioning	Marine air
Dinette	yes
Dinette to convert into berth	yes
Opening door to aft deck	yes
Galley	yes
Countertop	yes
Sink	stainless steel 2x
Cooker	ceramic 4-burner
Oven	oven/microwave combination Miele M638
Extractor	yes
Fridge	with freezer compartment 2x
Hot water system	220V + engine
Water pressure system	electrical 24 V (2014)
Dishwasher	Bosch
Ice maker	on upper deck
Owners cabin	French bed
Wardrobe	yes
Bathroom	en suite
Toilet	en suite
Toilet system	electric



# STENTOR 1500

Wash basin	in the bathroom
Shower	en suite
Guest cabin 1	double bed
Wardrobe	yes
Bathroom	separate
Toilet	separate
Toilet system	electric
Wash basin	in the bathroom
Shower	separate
Washing machine	wash/dry combination Oko-matic 4 kg.
Dryer	wash/dry combination Oko-matic 4 kg.
Extra info	All hinges and latches renewed for upper deck windows (2014)

## MACHINERY

No of engines	1
Make	Caterpillar
Type	3208-180
HP	180
kW	132,30
Fuel	diesel
Year installed	1997
Maximum speed (kn)	9,5
Cruising speed (kn)	8
Consumption (l/hr)	14
Range (nm)	2000
Engine hours	2274
Engine cooling system	seawater
Drive	shaft
Engine controls	manual
Gearbox	hydraulic Twindisk
Bowthruster	hydraulic 15 hp



# STENTOR 1500

Sternthruster	hydraulic 15 hp
Propeller type	fixed
Propeller blades	4-bladed
Propeller shaft material	stainless steel (2010)
Shaft lubrication	water
Electric bilge pump	yes
Generator	B&N Lister Petter 9 kW
Running hours generator	1802 (16-06-2015)
Start battery	2x 225 ah (2014)
Service battery	6x 170 ah
Generator battery	1x 75 ah
Battery monitor	Victron
Battery charger	Victron Centaur 24/40
Inverter	Victron Atlas 24/2500
Shorepower	with cable
Stabilizers	fin Koop nautic Sea Rocq
Extra info	Engine and generator service (February 2015)

## NAVIGATION

Electric compass	Autohelm
Depth sounder	Autohelm tridata
Log	Autohelm tridata
Windset	Autohelm
Repeater	Autohelm
VHF	Shipmate RS8300
Autopilot	Autohelm ST7000
Rudder angle indicator	Autohelm
Radar	Raytheon
GPS	Raytheon
Radar/plotter	Raytheon R21xx
Navtex	ICS nav 4



## EPIRB

Mc Murdo automatic release (2010)

## Searchlight

yes

## EQUIPMENT

### Sprayhood

yes

### Cockpit cover

canvas with windows (puts upper deck into porch)

### Cockpit cushions

yes

### Cockpit table

yes

### Cockpit chairs

yes

### Bathing platform

yes

### Boarding ladder

stainless steel

### Gangway

hydraulic with remote control Opacmare (2010)

### Deck shower

yes

### Anchor

40 kg.

### Anchor chain

75 m, 12 mm

### Windlass

hydraulic

### Windlass aft

electrical Maxwell 1200

### Deck wash

yes

### Dinghy

3.20 m

### Outboard

Yamaha

### Davits

stainless steel

### Deck crane

manual

### Sea railing

stainless steel

### Railing side opening gates

yes

### Life raft

container

### Last life raft survey

Life raft needs service

### Lifebuoy

2x

### Wiper

5x

### Horn

yes

### Fenders

yes

### Mooring lines

yes



# STENTOR 1500

Spare parts	yes
Radio-cd player	Kenwood radio/cassette
Fire extinguisher	yes
Auto extinguisher system	in engine room
Extra info	new sea cocks (2014)



# STENTOR 1500



# STENTOR 1500



# STENTOR 1500



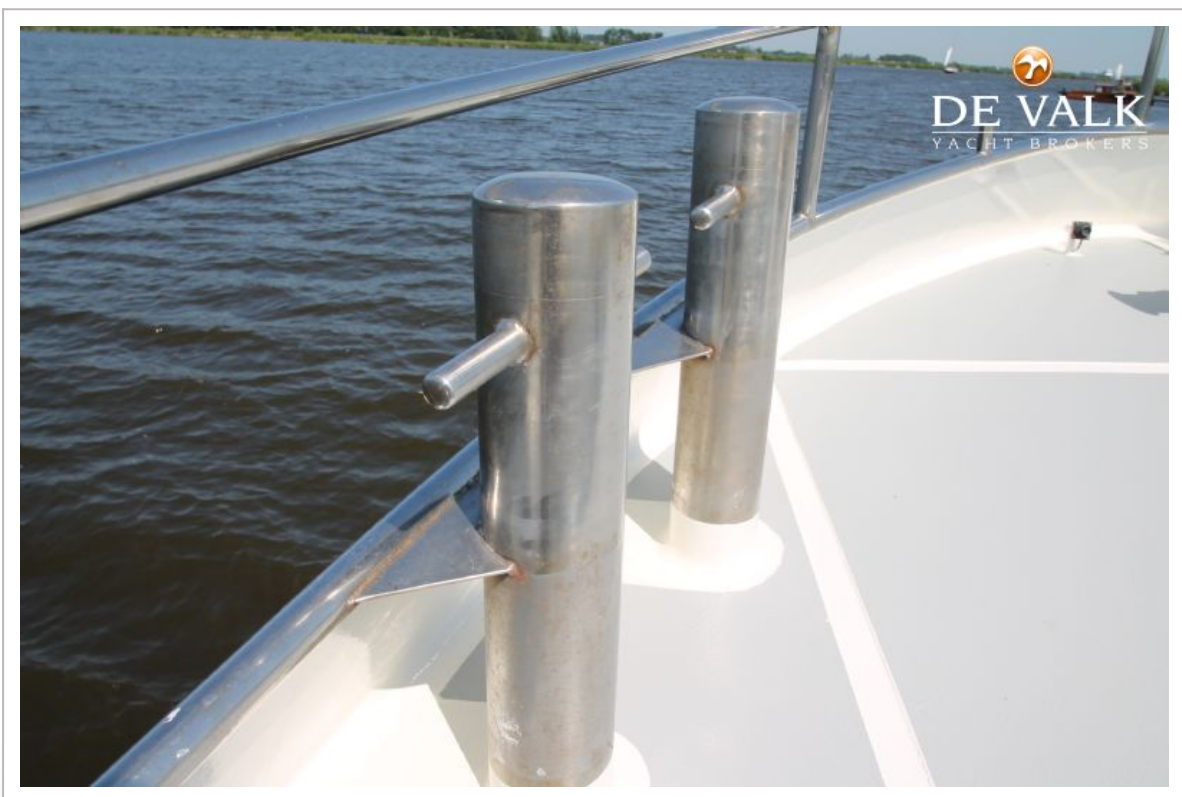
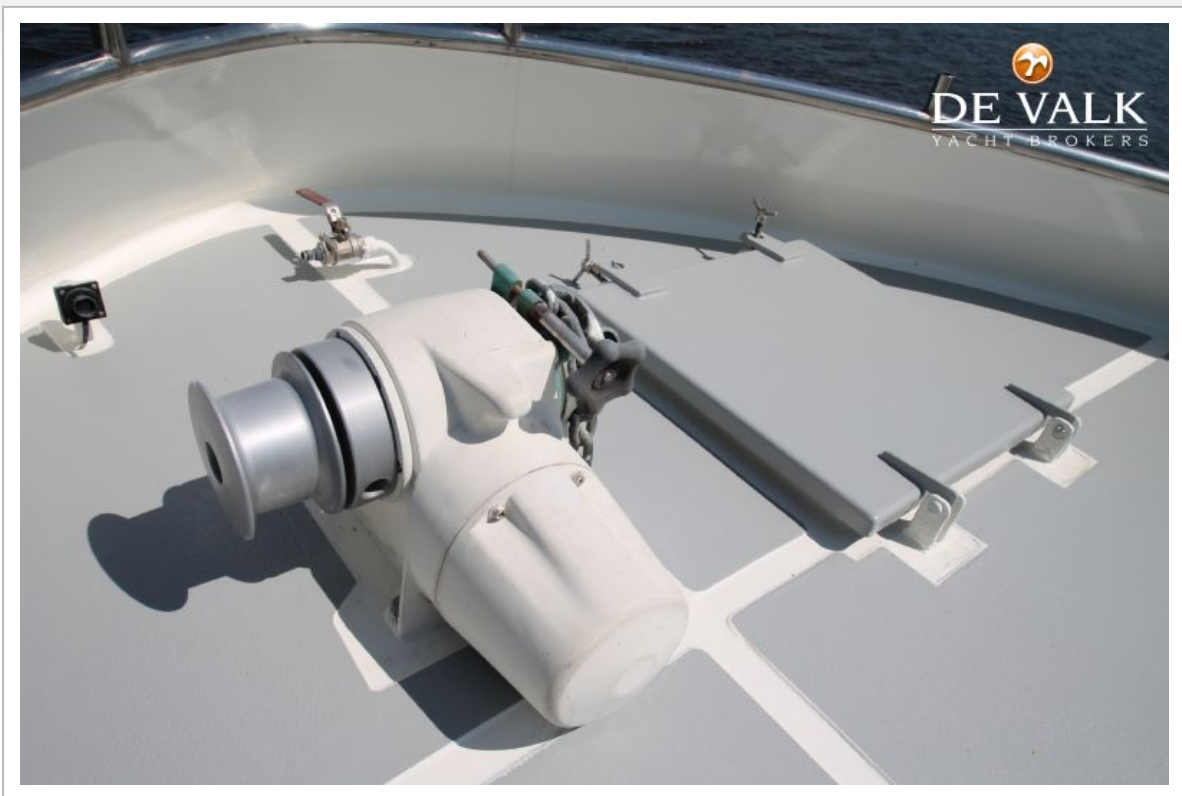
# STENTOR 1500



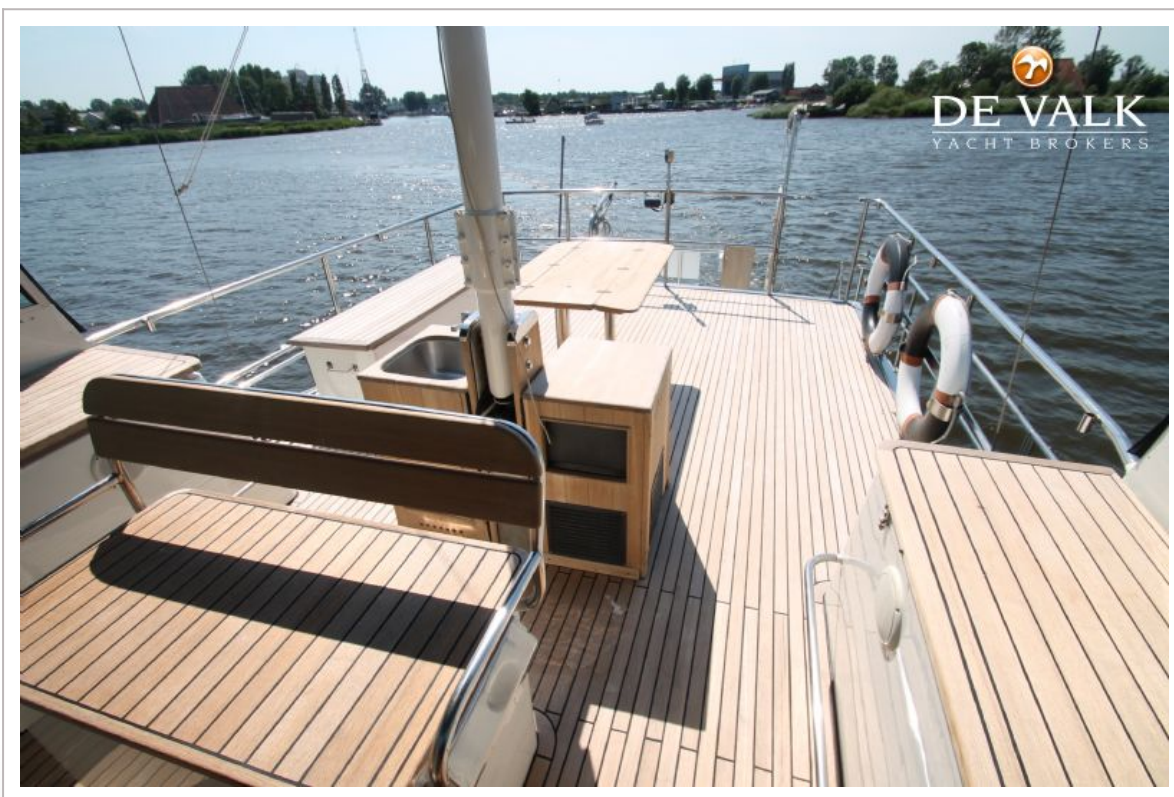
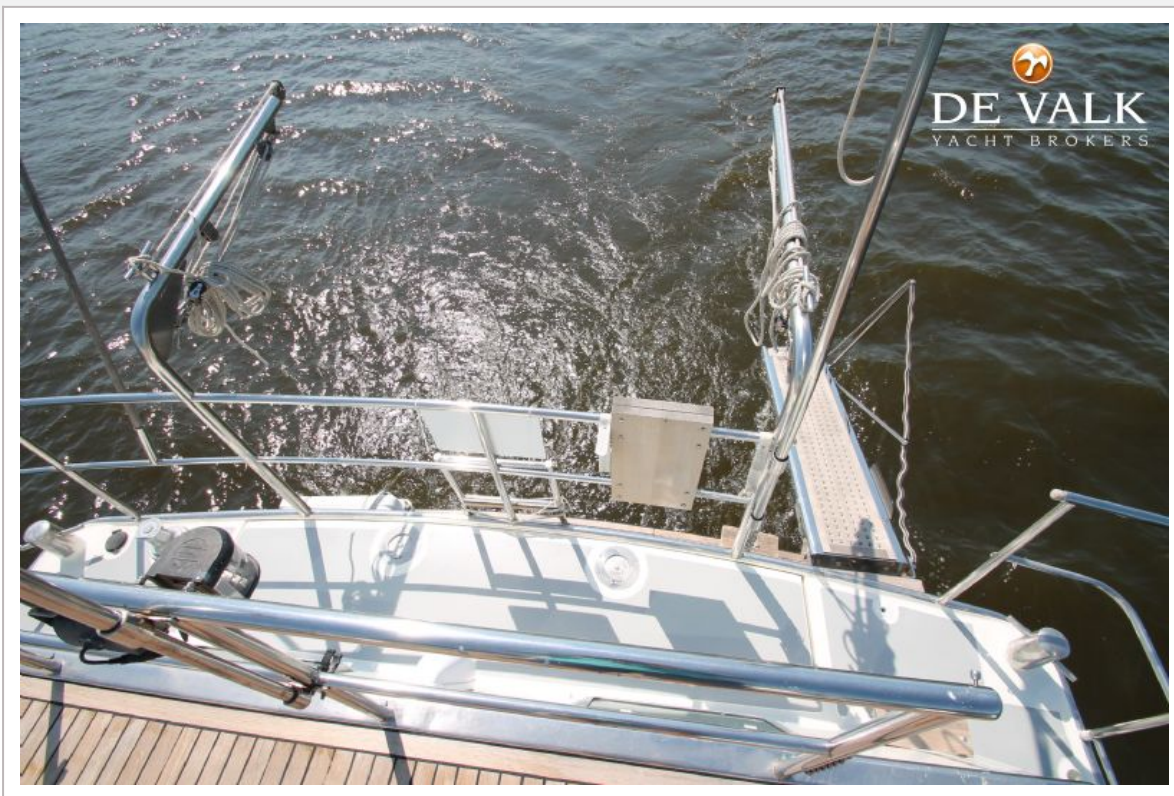
# STENTOR 1500



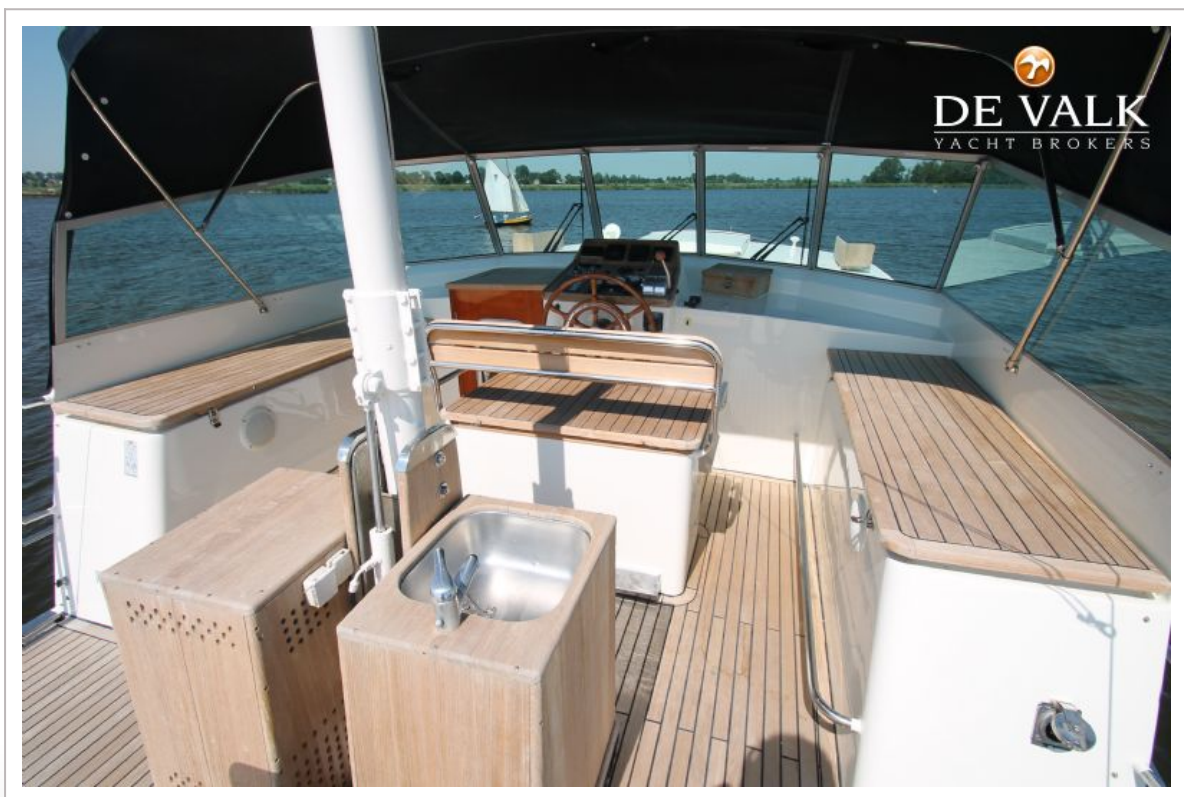
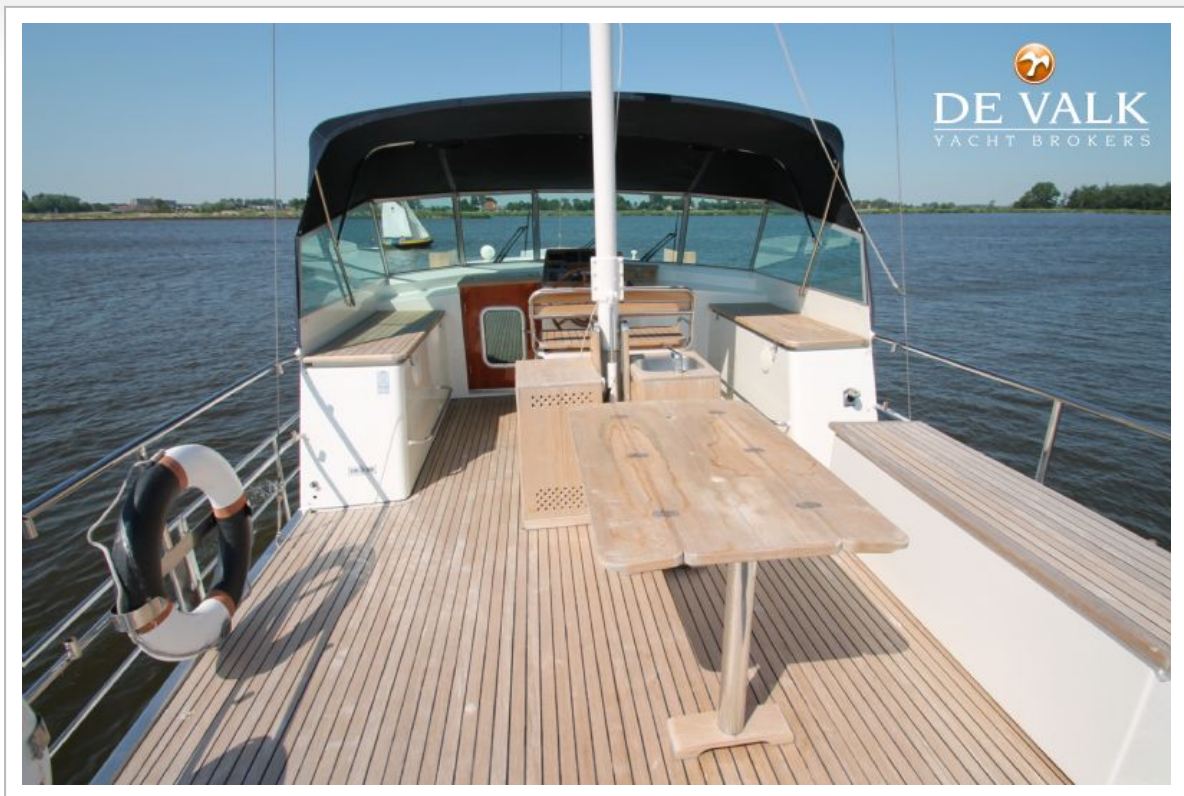
# STENTOR 1500



# STENTOR 1500



# STENTOR 1500



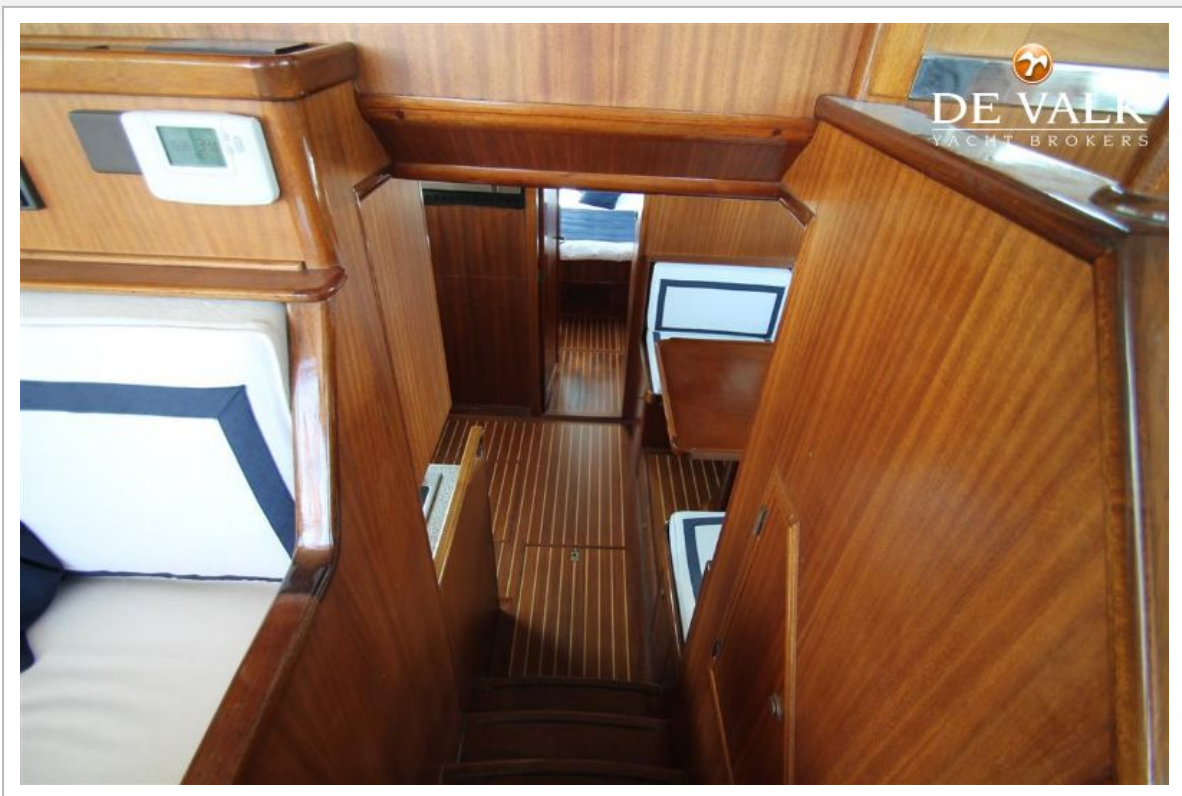
# STENTOR 1500



# STENTOR 1500



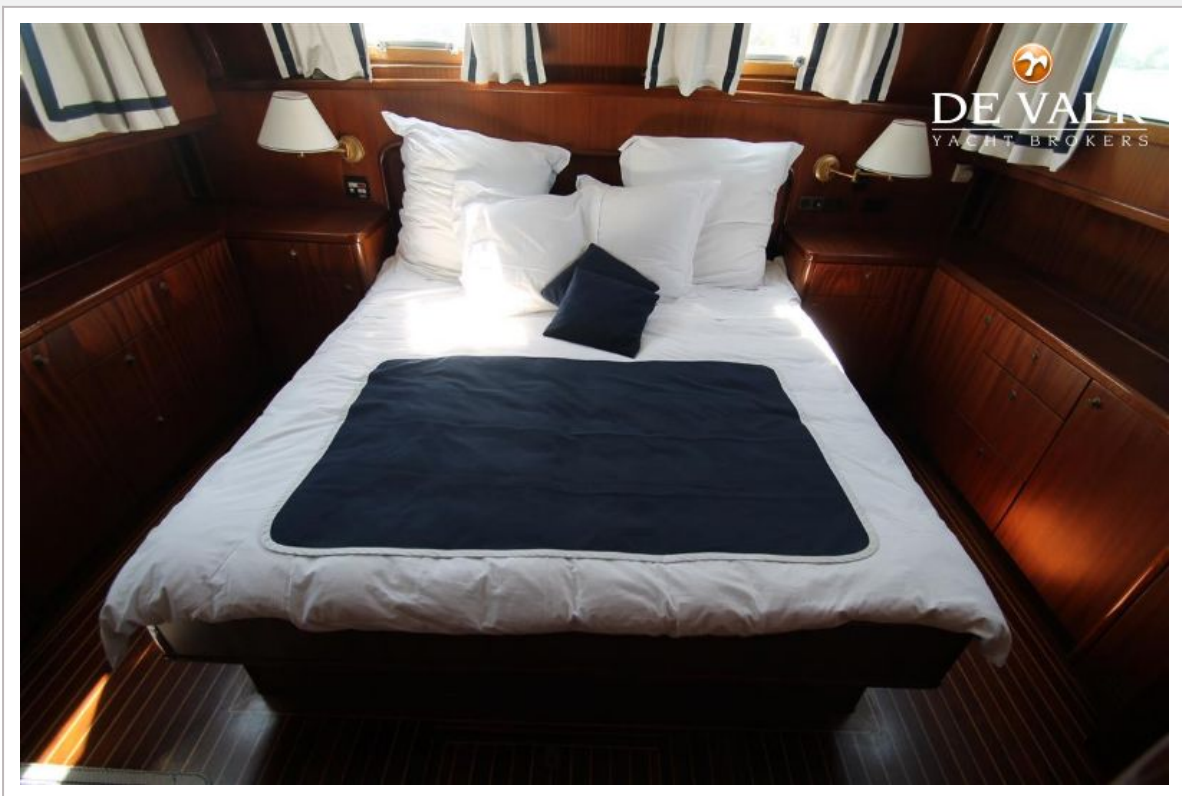
# STENTOR 1500



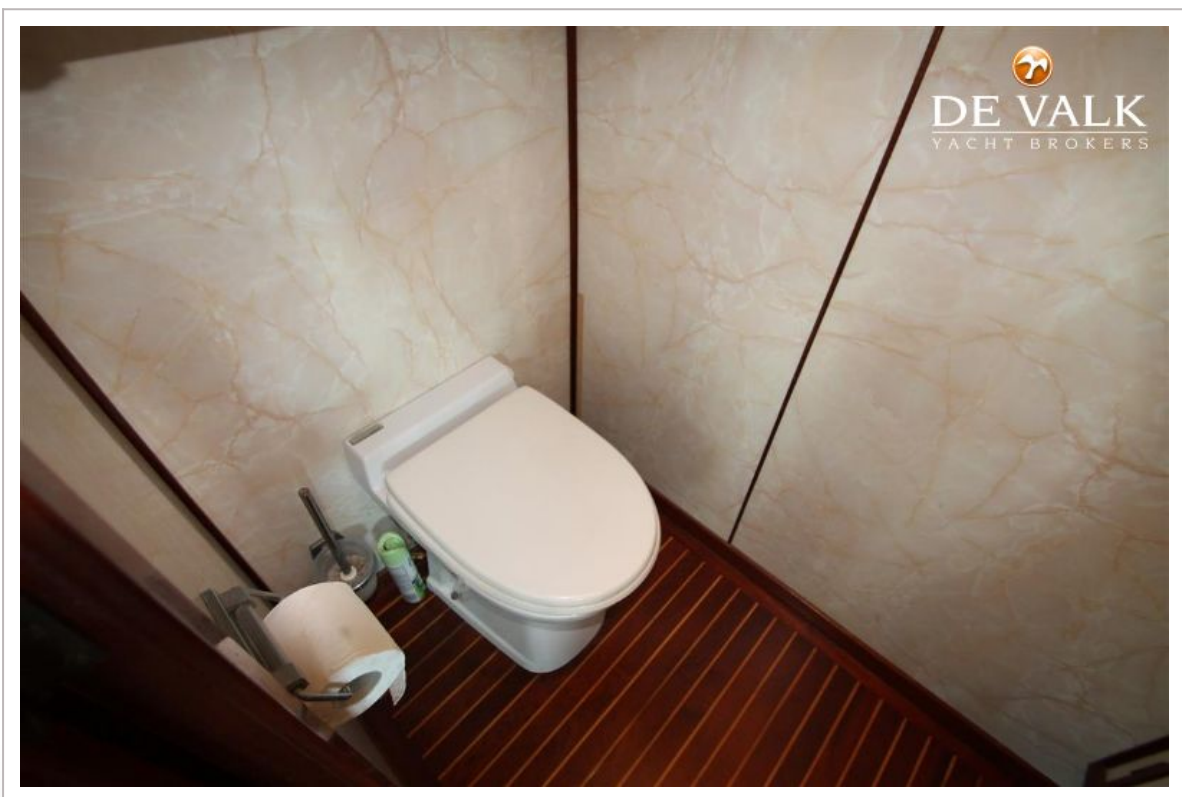
# STENTOR 1500



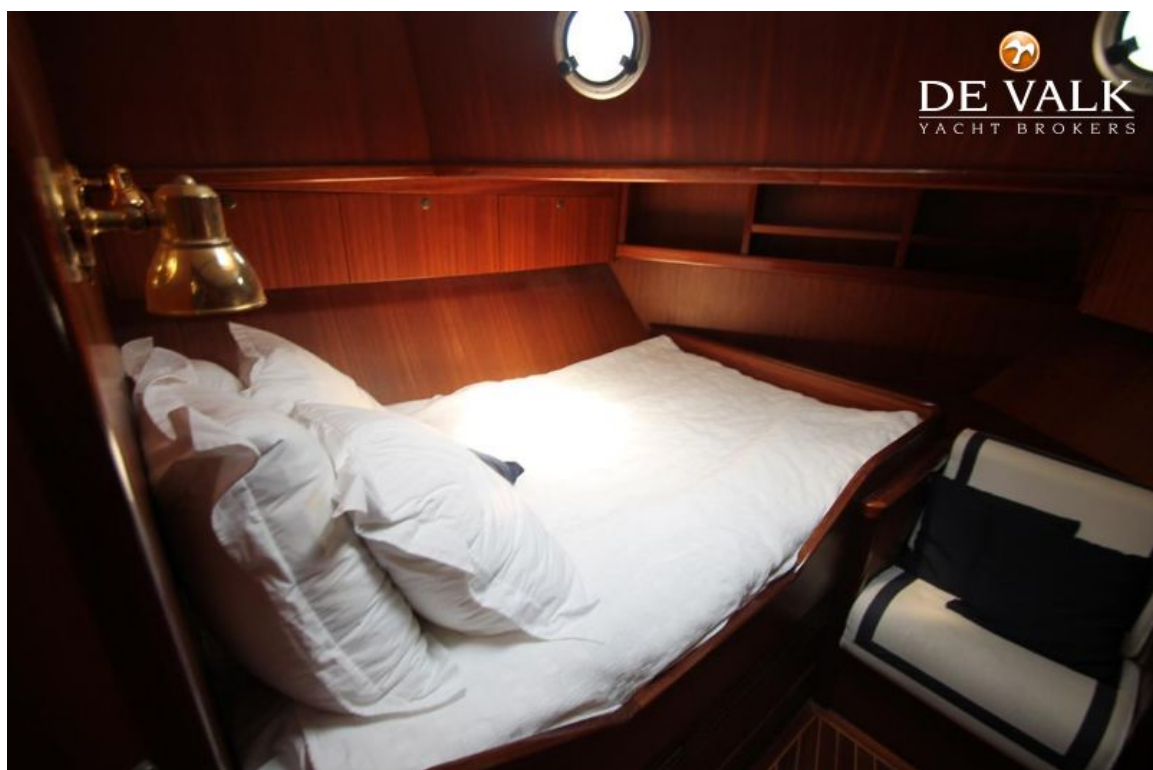
# STENTOR 1500



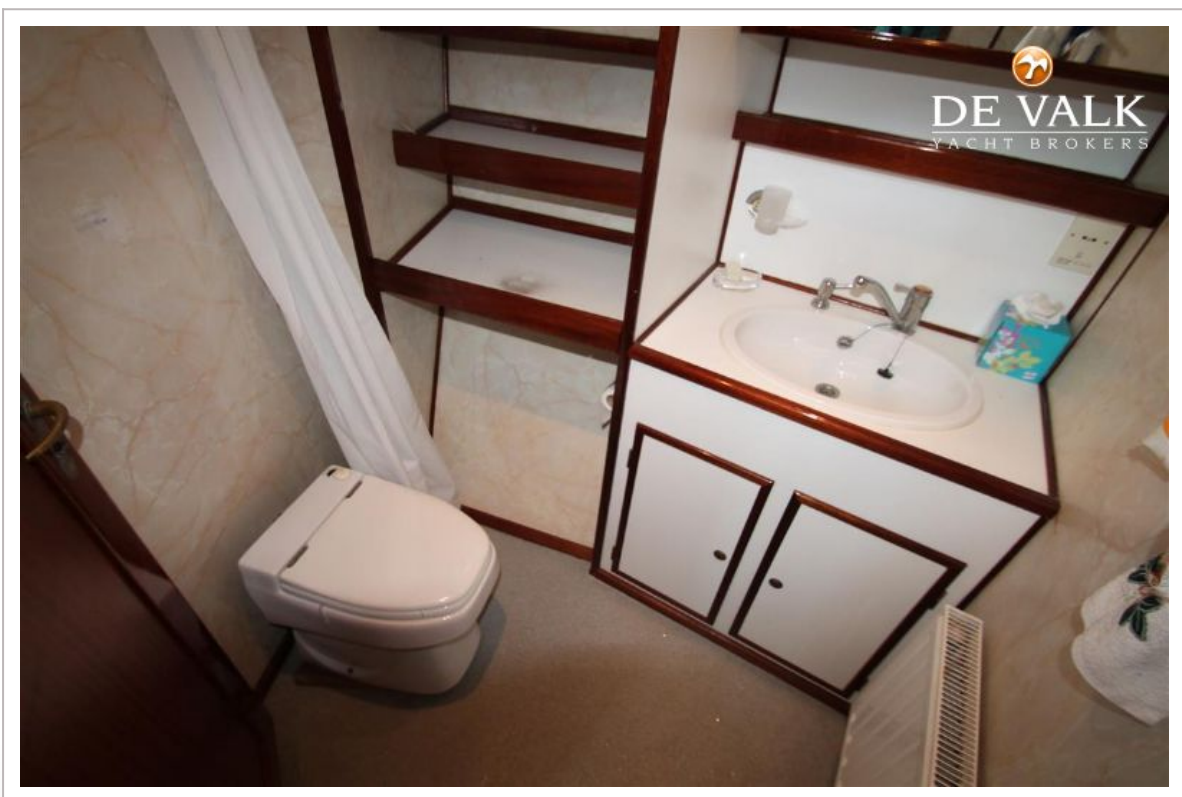
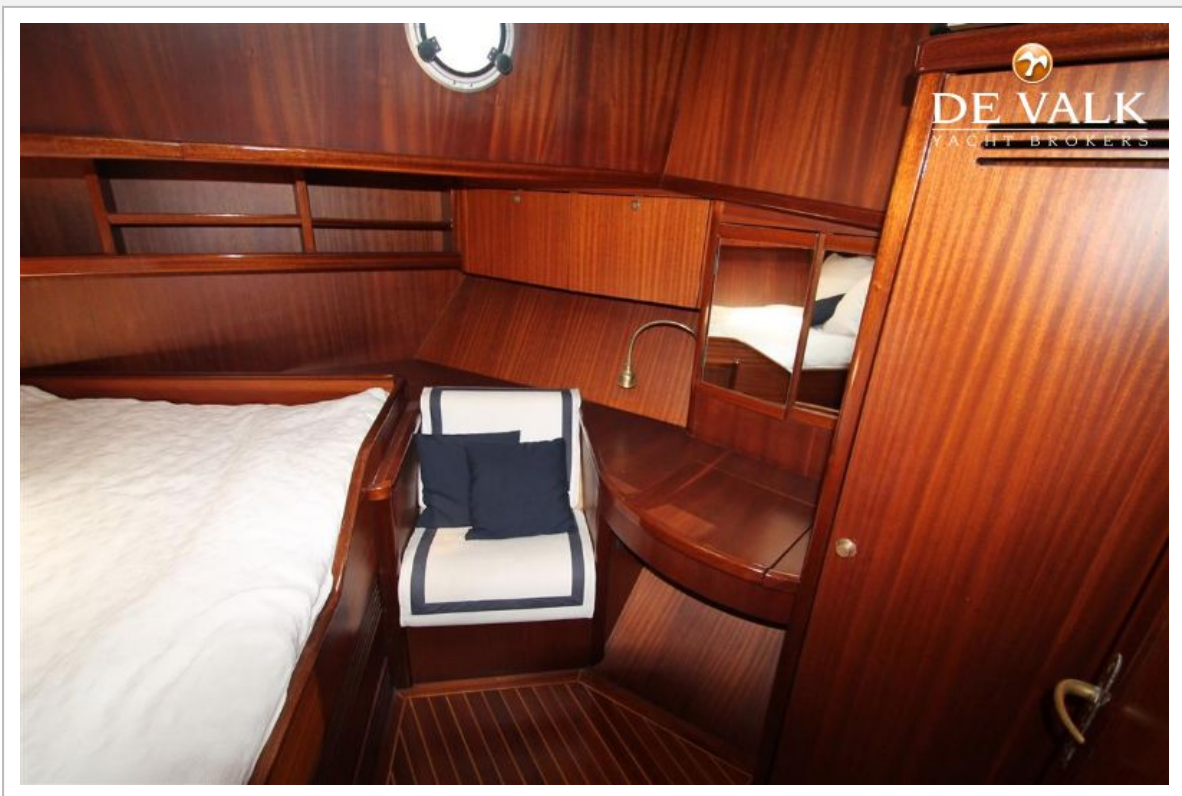
# STENTOR 1500



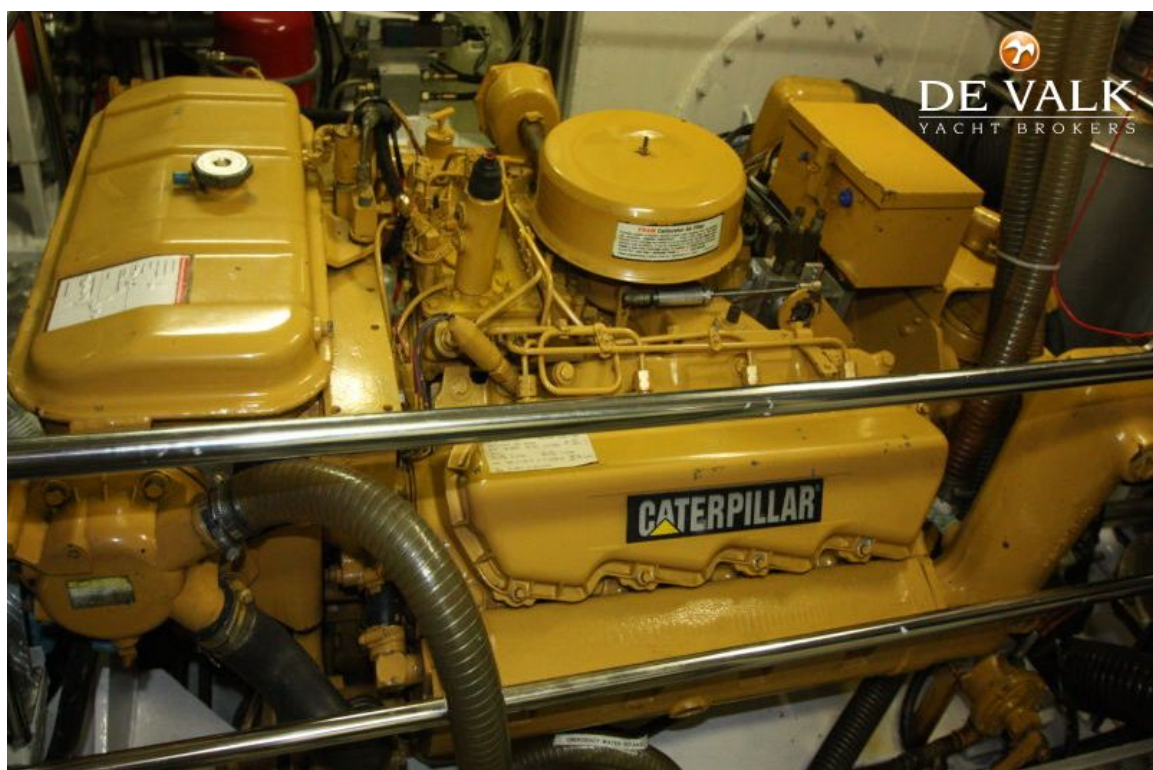
# STENTOR 1500



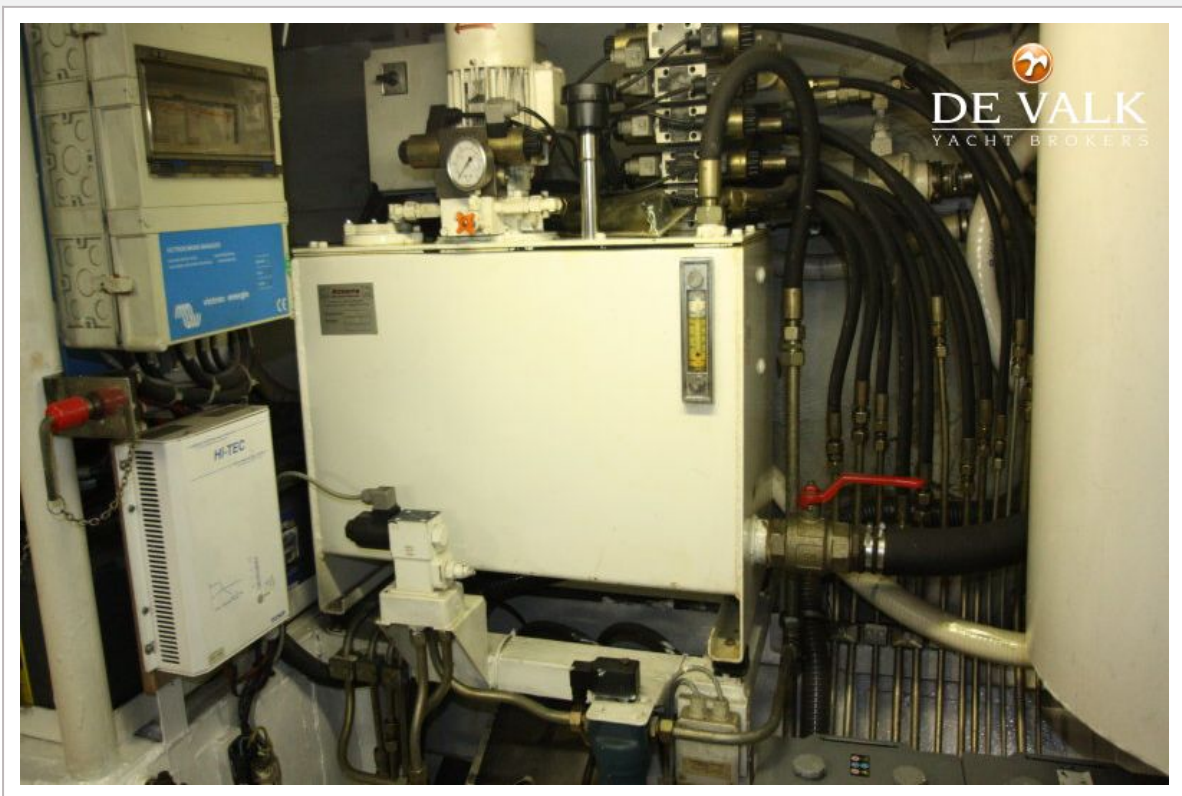
# STENTOR 1500



# STENTOR 1500



# STENTOR 1500



# STENTOR 1500

