



DE VALK  
YACHT BROKERS



## ELAN IMPRESSION 514



DE VALK  
YACHT BROKERS

## BROKER'S COMMENTS

One owner and very little use, this Superb condition Impression 514, is probably the best Impression 514 in the market today. She is in absolutely macular condition and ready to sail anywhere. Fully loaded with extras. A must visit.

*Athos Cleanthous*

## SPECIFICATIONS

<b>Dimensions</b>	16.10 x 4.68 x 2.20 (m)	<b>Builder</b>	ELAN Yachts
<b>Built</b>	2011	<b>Cabins</b>	3
<b>Material</b>	GRP	<b>Berths</b>	6
<b>Engine(s)</b>	1 x Volvo Penda D3 Inboard diesel	<b>Hp/Kw</b>	110.00 (hp), 80.85 (kw)
<b>Asking price</b>	sold (VAT )	<b>Lying</b>	contact Antibes

## CONTACT

<b>Sales office</b>	De Valk Antibes	<b>Telephone</b>	+33 492 91 0202
<b>Address</b>	2, Avenue de Verdun 06600 Antibes FR	<b>E-mail</b>	antibes@devalk.nl

## DISCLAIMER

These particulars are given in good faith as supplied but cannot be guaranteed.



## GENERAL

Model	ELAN IMPRESSION 514
Type	sailing yacht
LOA (m)	16,10
LWL (m)	13,76
Beam (m)	4,68
Draft (m)	2,20
Year built	2011
Builder	ELAN Yachts
Country	Slovenia
Designer	Rob Humphrey
Displacement (t)	18
Hull material	GRP
Hull colour	blue
Superstructure material	GRP
Deck material	GRP
Superstructure deck finish	anti-slip moulded in
Cockpit deck finish	teak
Antifouling (year)	2015
Window frame	aluminium
Window material	tempered glass
Deckhatch	yes
Portholes	yes
Fuel tank (litre)	stainless steel 440
Level indicator (fuel tank)	yes
Freshwater tank (litre)	stainless steel 780
Level indicator (freshwater)	yes
Wheel steering	hydraulic
Emergency tiller	yes

## ACCOMMODATION



Cabins	3
Berths	6
Interior	oak
Floor	teak
Open cockpit	yes
Air-conditioning	reverse cycle airco
Navigation center	yes
Chart table	yes
Dinette to convert into berth	yes
Convertible berth	yes
Sliding door to cockpit	yes
Galley	yes
Countertop	corian
Sink	stainless steel
Cooker	calor gas
Oven	yes
Extractor	yes
Gas alarm	yes
Microwave	Electrolux
Fridge	
Freezer	yes
Hot water system	220V
Water pressure system	electrical
Manual and/or foot pump	yes
Kettle	yes
Coffee maker	yes
Crockery	yes
Owners cabin	double bed
Wardrobe	hanging/drawers/shelves
Toilet	en suite
Toilet system	electric
Shower	en suite



Guest cabin 1	twin single
Wardrobe	hanging and drawers
Toilet	en suite
Toilet system	electric
Shower	en suite
Guest cabin 2	twin single
Wardrobe	hanging and drawers
Toilet	en suite
Toilet system	electric
Shower	en suite

## MACHINERY

No of engines	1
Make	Volvo Penda D3
Type	Inboard
HP	110,00
kW	80,85
Fuel	diesel
Year installed	2011
Drive	shaft
Engine controls	electrical
Gearbox	hydraulic
Bowthruster	electric Max Power CT165
Exhaust	watercooled
Propeller type	feathering
Propeller shaft material	stainless steel
Manual bilge pump	yes
Electric bilge pump	yes
Bilge alarm	yes
Generator	silent separator Mastervolt-Wisper 8 (6.4 KW)
Running hours generator	yes



Batteries	AGM
Bowthruster battery	yes
Battery charger/inverter	Mastervolt 130 A
Shorepower	with cable
Auto positioning system	yes
Extra info	Full 24 v electrical System pack, Hydraulic opening transom with hydraulic folding steps.

## NAVIGATION

GPS	yes
Weather receiver	yes
EPIRB	yes
Extra info	Raymarine fully integrated pack 3

## EQUIPMENT

Sprayhood	yes
Sprayhood with grab rail	yes
Cockpit cover	yes
Dodger	yes
Bimini	yes
Sun awning	yes
Winter cover	yes
Cockpit cushions	yes
Cockpit table	yes
Bathing platform	yes
Boarding ladder	stainless steel
Transom door	yes
Gangway	Bensenzoni P1380 Teak
Deck shower	yes
Anchor	Bruce
Anchor chain	yes



Windlass	electrical
Deck wash	yes
Sea railing	stainless steel
Pushpit	yes
Pulpit	yes
Life raft	valise (or bag) 2015
Life raft (pers)	12
Lifejackets	yes
Safety harness	yes
Lifebuoy	yes
Binocular	yes
Radar reflector	yes
Fenders	yes
Mooring lines	yes
Spare parts	yes
Alarm system	yes
TV	Sony Bravia 26 LCD
Radio-cd player	yes
DVD player	BOSE Lifestyle 18
iPod connection	yes
Cockpit speakers	BOSE
Speakers in salon	BOSE
Speakers in cabin	BOSE
Clock - barometer	yes
Fire extinguisher	yes
Latest extinguisher survey	2015
Extinguisher in engine room	yes
Extra info	Additional Battery Bank AGM 12/160 Mastervolt, Additional Inverter/charger Mastervolt 4kw-120 MAS C230V, Air condition Webasto 34000 BTU (3 Units()) with individual controls

## RIGGING



<b>Rigging</b>	sloop
<b>Standing rigging</b>	wire
<b>Material mast</b>	aluminium
<b>Spreaders</b>	yes
<b>Keel stepped mast</b>	yes
<b>Mainsail</b>	68.78 Must furled
<b>Mainsail cover</b>	yes
<b>Genoa</b>	74.34
<b>Gennaker</b>	168.50
<b>Reefing System</b>	main in-mast furling
<b>Backstay adjuster</b>	hydraulic
<b>Boomvang</b>	gasspring
<b>Multifunctional winches</b>	halyard/sheet winches Harken





# ELAN IMPRESSION 514



# ELAN IMPRESSION 514





# ELAN IMPRESSION 514





# ELAN IMPRESSION 514



# ELAN IMPRESSION 514





# ELAN IMPRESSION 514

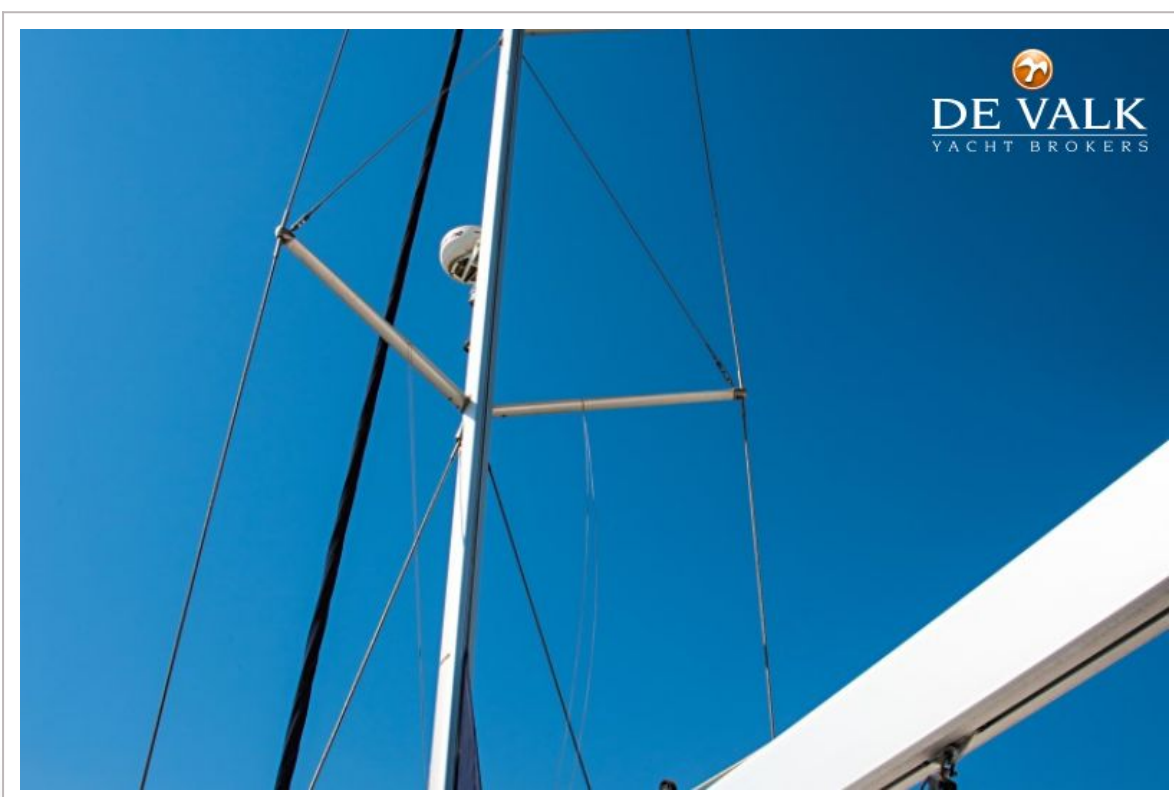


# ELAN IMPRESSION 514





# ELAN IMPRESSION 514





# ELAN IMPRESSION 514



# ELAN IMPRESSION 514





# ELAN IMPRESSION 514

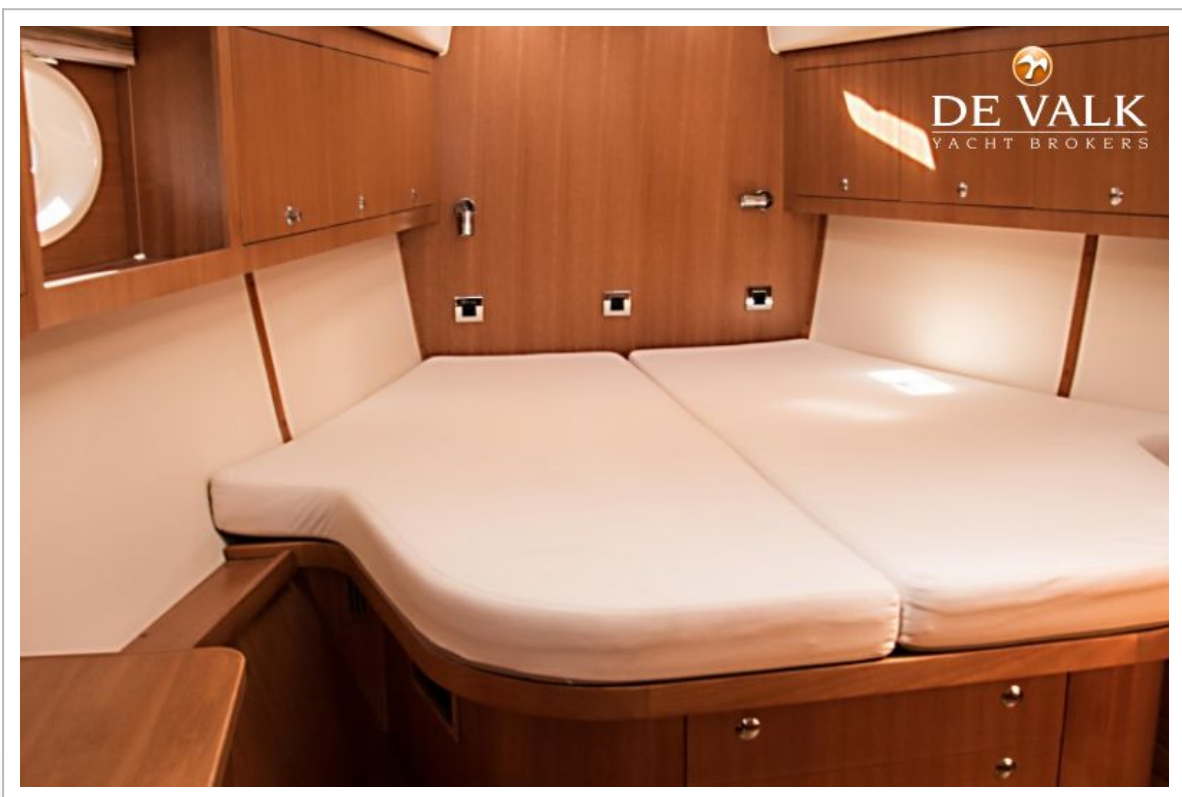




# ELAN IMPRESSION 514

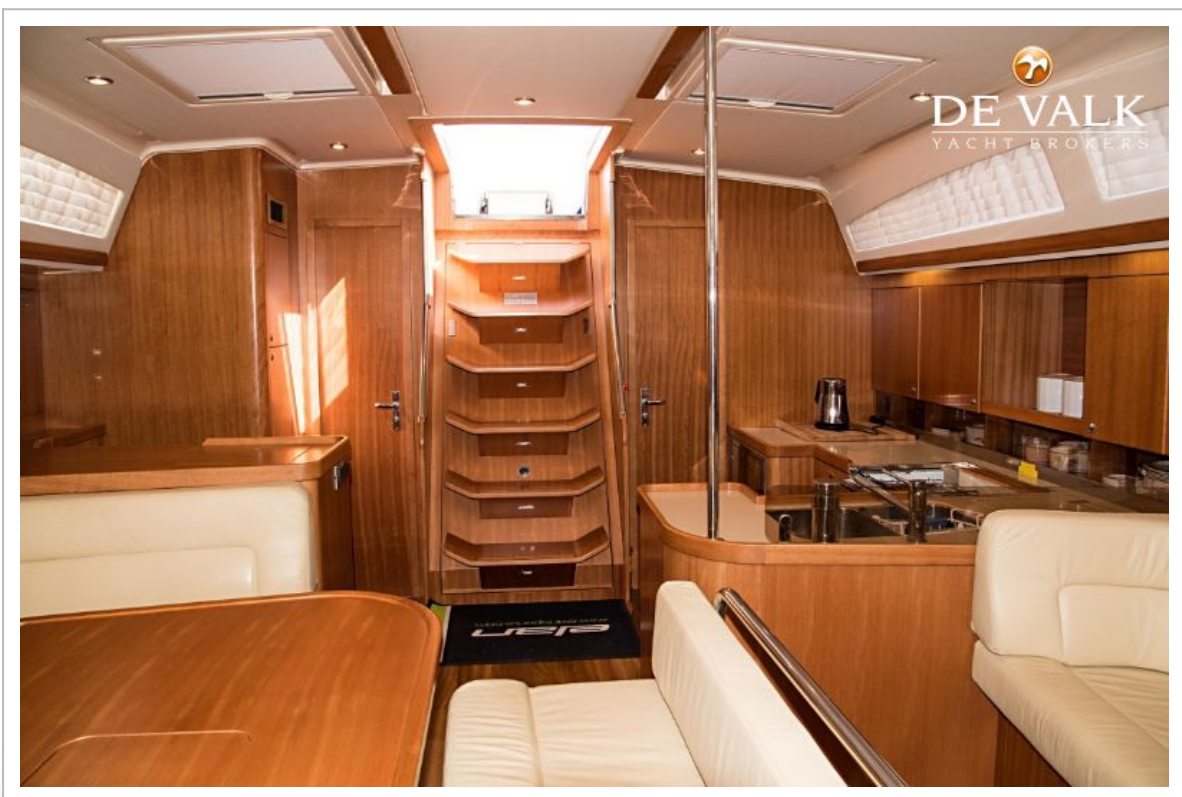


# ELAN IMPRESSION 514

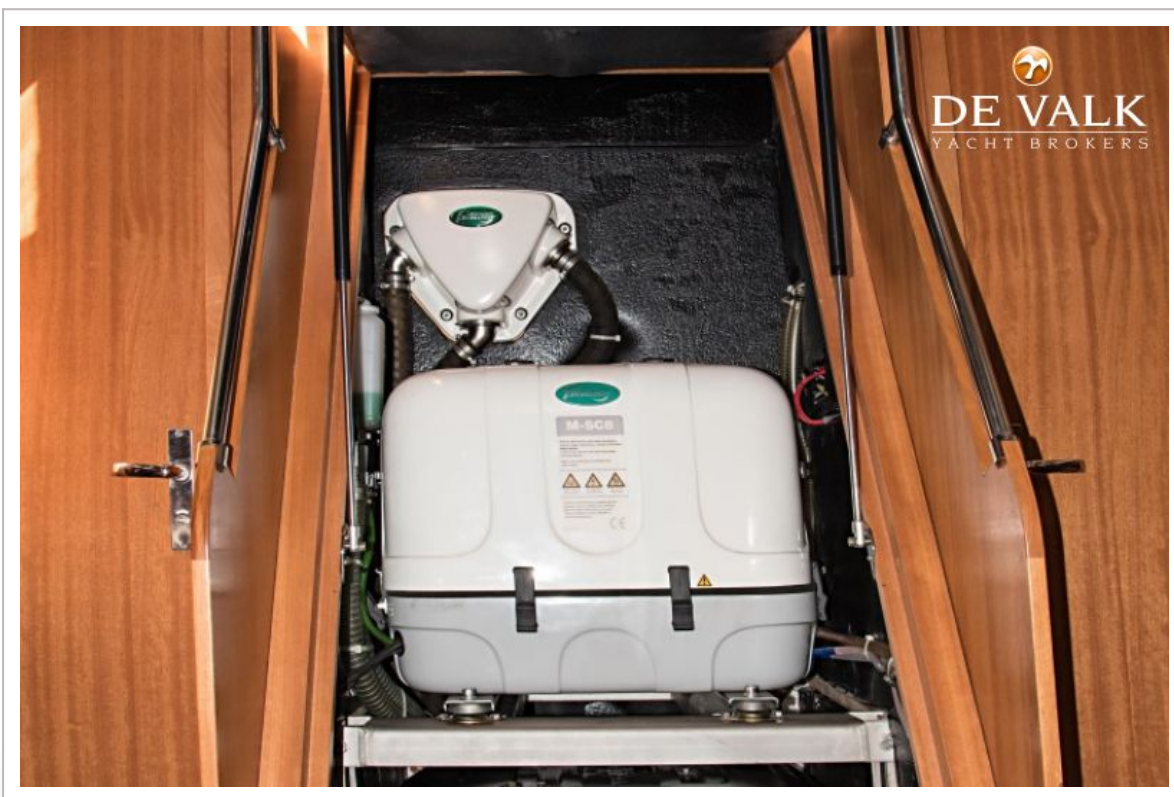
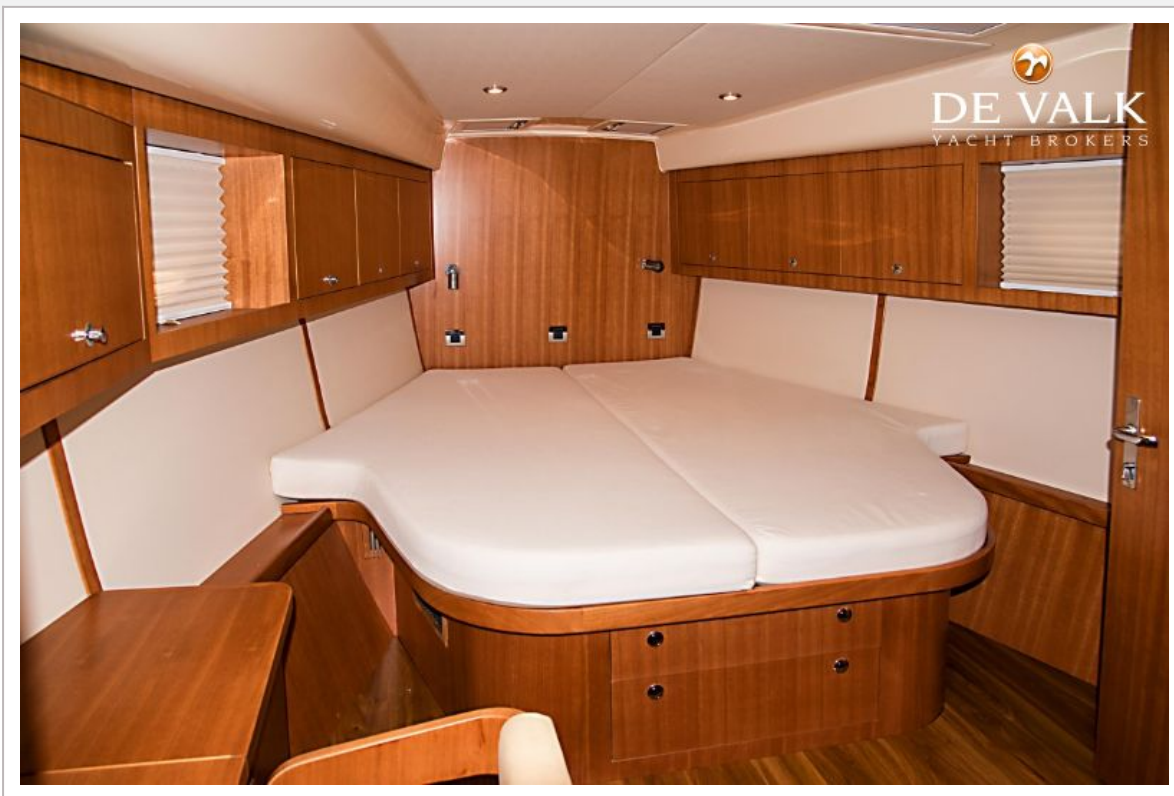




# ELAN IMPRESSION 514



# ELAN IMPRESSION 514



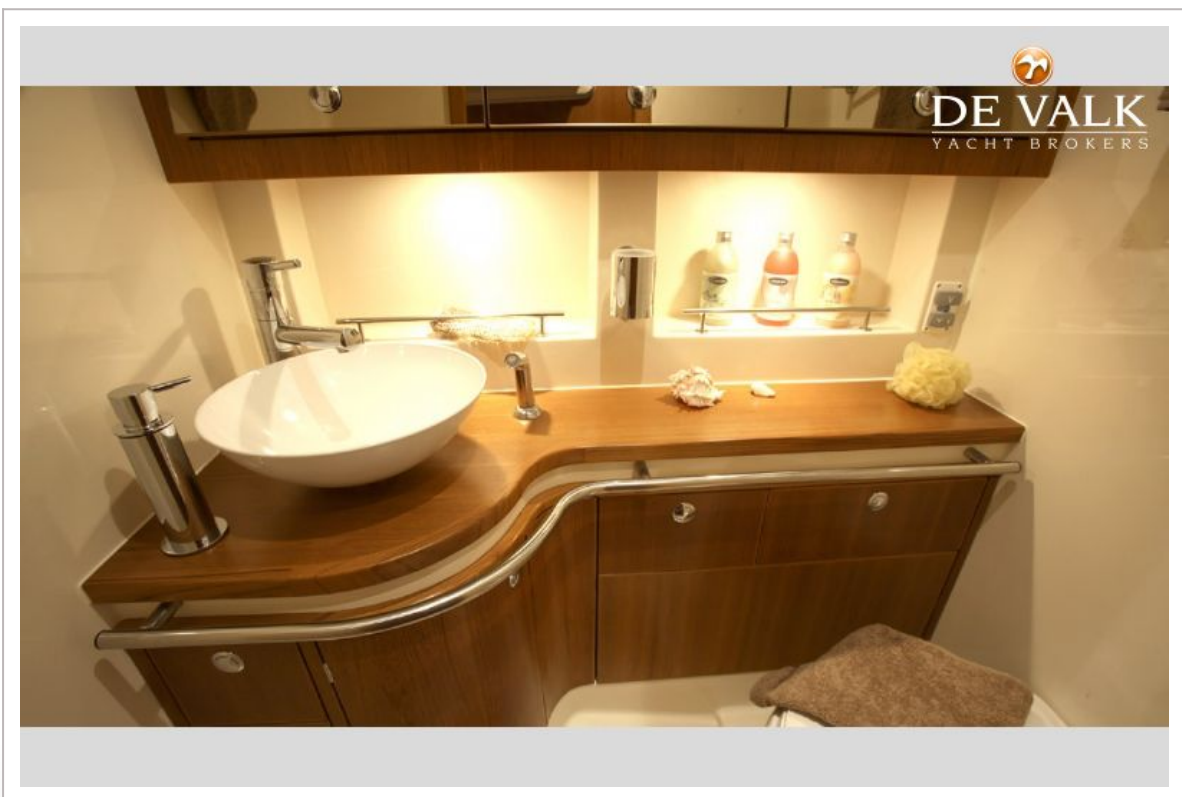


# ELAN IMPRESSION 514

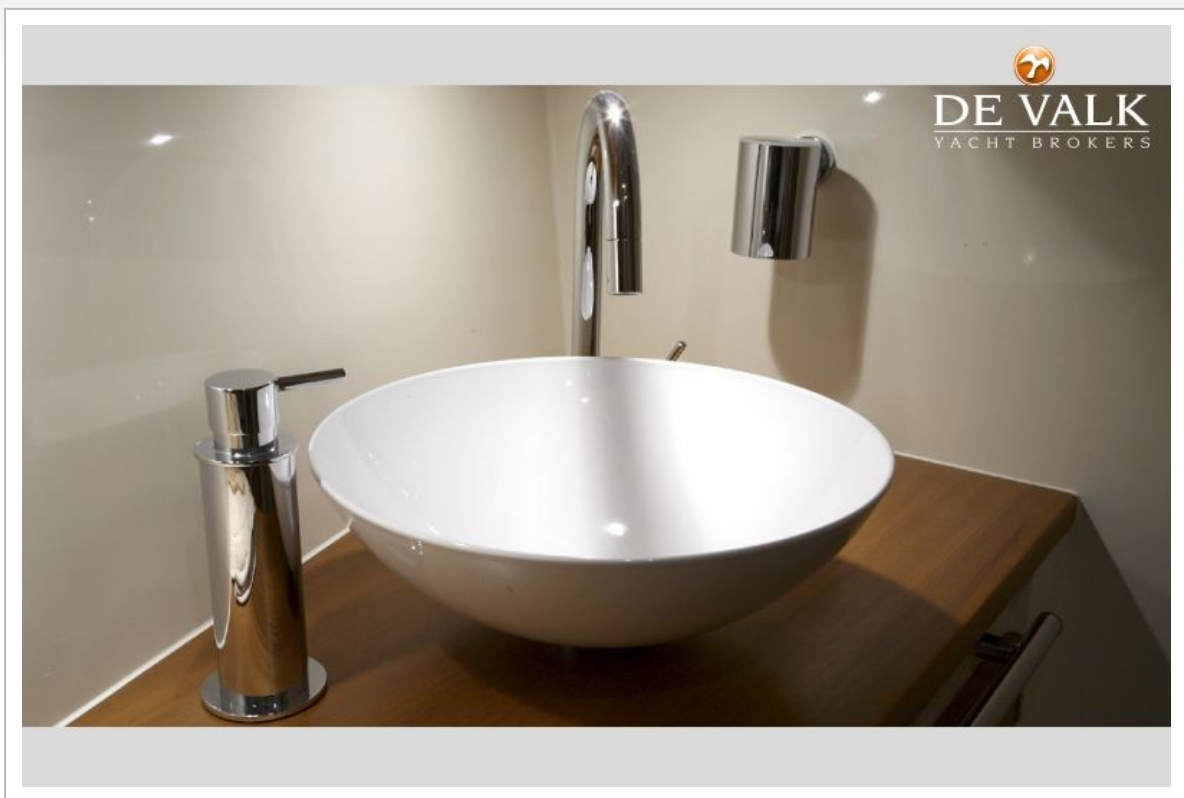




# ELAN IMPRESSION 514



# ELAN IMPRESSION 514



# ELAN IMPRESSION 514

