



GRAND BANKS 42 CLASSIC



GRAND BANKS 42 CLASSIC

BROKER'S COMMENTS

Boat is been kept in a good condition and regularly serviced and updated. She is lying in Genova- Italy for the winter and can be inspected immediately. Very comfortable lay out, with two spacious en-suite cabins, a big deck saloon and galley. She is the perfect live-on, long range cruising boat. VERY MOTIVATED SELLER!!

Athos Cleanthous

SPECIFICATIONS

Dimensions	12.75 x 4.15 x 1.27 (m)	Builder	Grand Banks
Built	1978	Cabins	2
Material	GRP	Berths	4
Engine(s)	2 x Ford Lehman Inboard diesel	Hp/Kw	2 x 120.00 (hp), 88.20 (kw)
Asking price	sold (VAT)	Lying	Italy

CONTACT

Sales office	De Valk Antibes	Telephone	+33 492 91 0202
Address	2, Avenue de Verdun 06600 Antibes FR	E-mail	antibes@devalk.nl

DISCLAIMER

These particulars are given in good faith as supplied but cannot be guaranteed.



GRAND BANKS 42 CLASSIC

GENERAL

Model	GRAND BANKS 42 CLASSIC
Type	motor yacht
LOA (m)	12,75
Beam (m)	4,15
Draft (m)	1,27
Year built	1978
Builder	Grand Banks
Country	Singapore
Displacement (t)	15.5
Gross tonnage	15.5
Hull material	GRP
Hull colour	white
Superstructure material	GRP
Deck material	GRP
Deck finish	paint
Flybridge	yes
Flybridge cover	yes
Flybridge cockpit cover	yes
Flybridge suncover	yes
Fuel tank (litre)	stainless steel 2000
Level indicator (fuel tank)	yes
Freshwater tank (litre)	stainless steel 1000
Level indicator (freshwater)	yes
Blackwater tank (litre)	polyethylene 60
Wheel steering	mechanical
Inside helm position	yes
Flybridge helm position	mechanical

ACCOMMODATION

Cabins	2
--------	---



GRAND BANKS 42 CLASSIC

Berths	4
Pilot house/deck saloon	yes
Air-conditioning	reverse cycle airco Cruse Air (16000 BTU)
Navigation center	yes
Chart table	yes
Aft Cabin	yes
Dinette to convert into berth	yes
Galley	yes
Owners cabin	double bed
Wardrobe	hanging/drawers/shelves
Toilet	en suite
Toilet system	electric
Shower	en suite
Guest cabin 1	twin single
Wardrobe	hanging and shelves
Toilet	en suite
Toilet system	electric
Shower	en suite
Extra info	Refrigerator with freezer, 4burner gas stove top, SHARP Convection-Grill-Microwave, Stainless steel lined stove top and ceiling panel for cooking, Custom galley equipment storage under microwave, Water system for direct shore water use, Saltwater spray at Galley sink tied to anchor wash down pump.

MACHINERY

No of engines	2
Make	Ford Lehman
Type	Inboard
HP	120,00
kW	88,20
Fuel	diesel
Maximum speed (kn)	10



GRAND BANKS 42 CLASSIC

Cruising speed (kn)	8
Consumption (l/hr)	11
Range (nm)	1300
Engine hours	7686 (1-10-2015)
Drive	shaft
Gearbox	mechanical Twin Disc
Engine controls	mechanical
Propeller type	fixed 2 new, extra propeller onboard
Manual bilge pump	yes
Electric bilge pump	yes
Electrical installation	yes
Generator	wet exhaust Northern Lights 8Kw
Running hours generator	1852 (01-10-2015)
Start battery	yes
Service battery	yes
Battery monitor	yes
Battery charger/inverter	yes
Shorepower	with cable

NAVIGATION

Extra info	Compasses on both, lower and upper helm station, GARMIN Depth sounder/plotter, FURUNO GPS, FURUNO 24NM Radar, 2 Handheld VHF units, Engine synch. control, Wind indicator.
------------	--

EQUIPMENT

Fixed windscreen	yes
Sun awning	yes
Bathing platform	yes
Boarding ladder	stainless steel
Deck shower	yes
Anchor	Danforth 16 Kg



GRAND BANKS 42 CLASSIC

Anchor chain	yes
Windlass	electrical
Deck wash	yes
Dinghy	inflatable
Outboard	Mercury 8Hp
Life raft	valise (or bag)
Wiper	yes
Horn	electric
Fenders	yes
Mooring lines	yes
Radio-cd player	yes
Speakers in salon	yes
Clock - barometer	yes
Fire extinguisher	yes



GRAND BANKS 42 CLASSIC



GRAND BANKS 42 CLASSIC



GRAND BANKS 42 CLASSIC



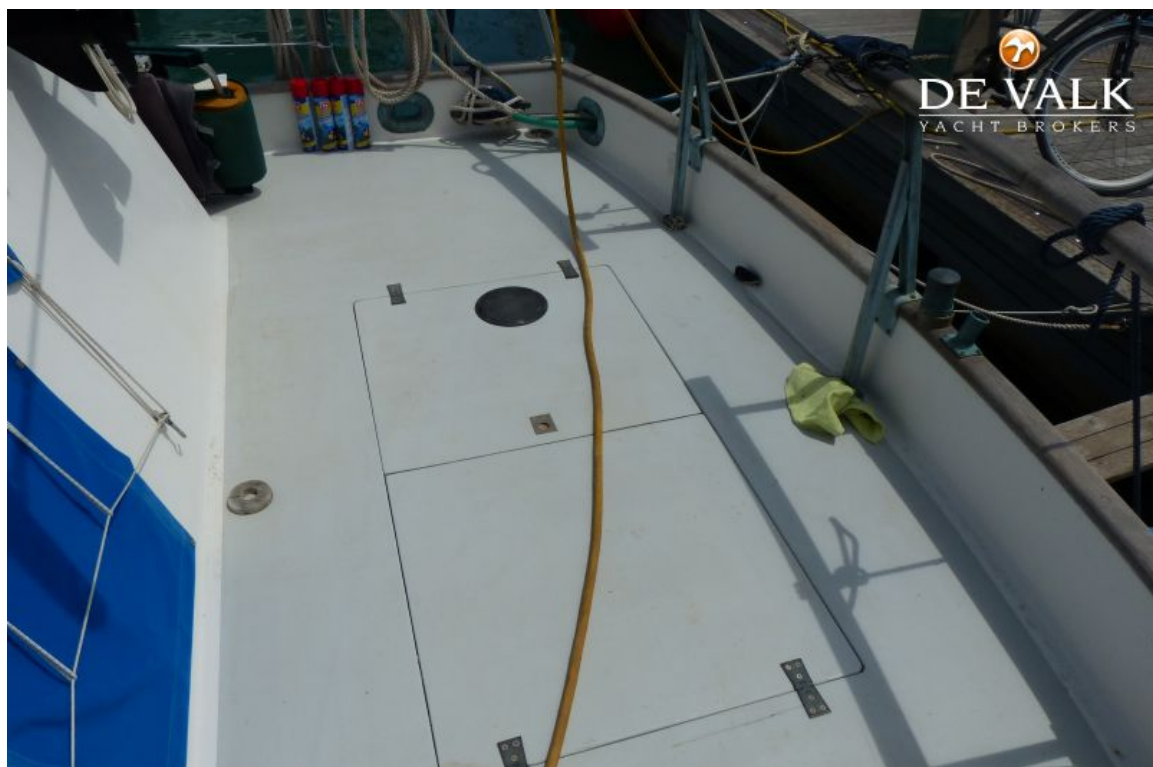
GRAND BANKS 42 CLASSIC



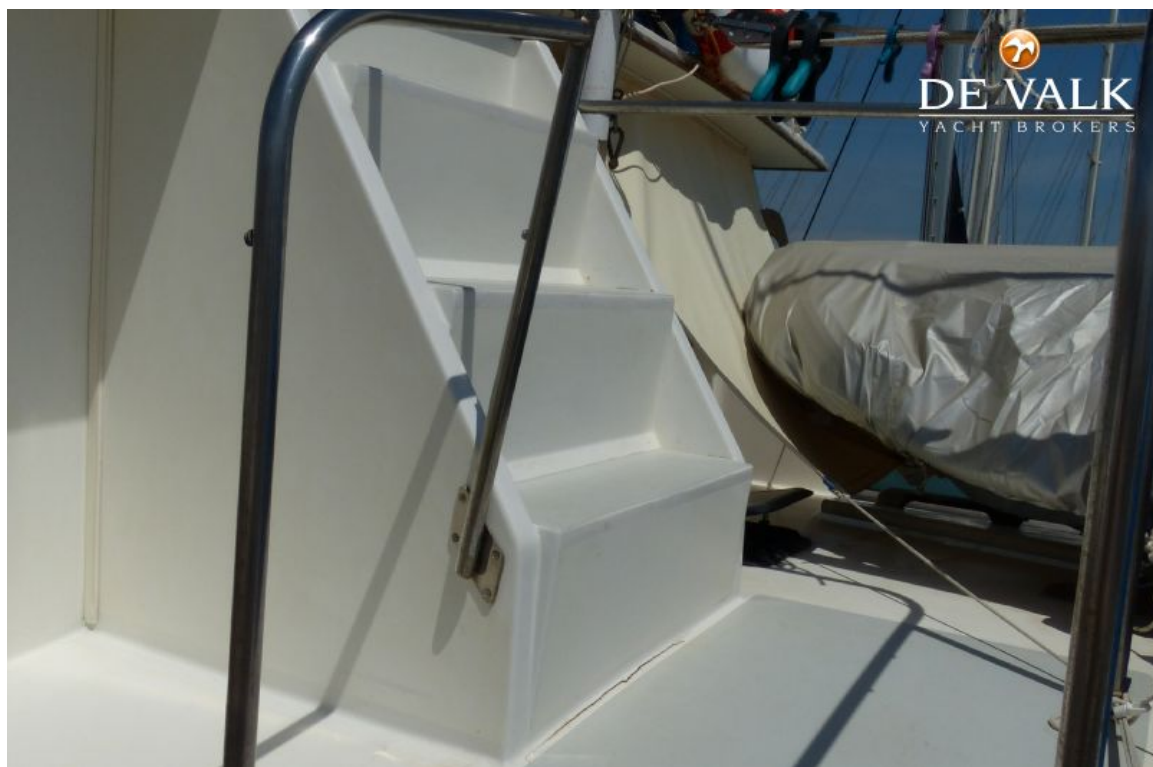
GRAND BANKS 42 CLASSIC



GRAND BANKS 42 CLASSIC



GRAND BANKS 42 CLASSIC



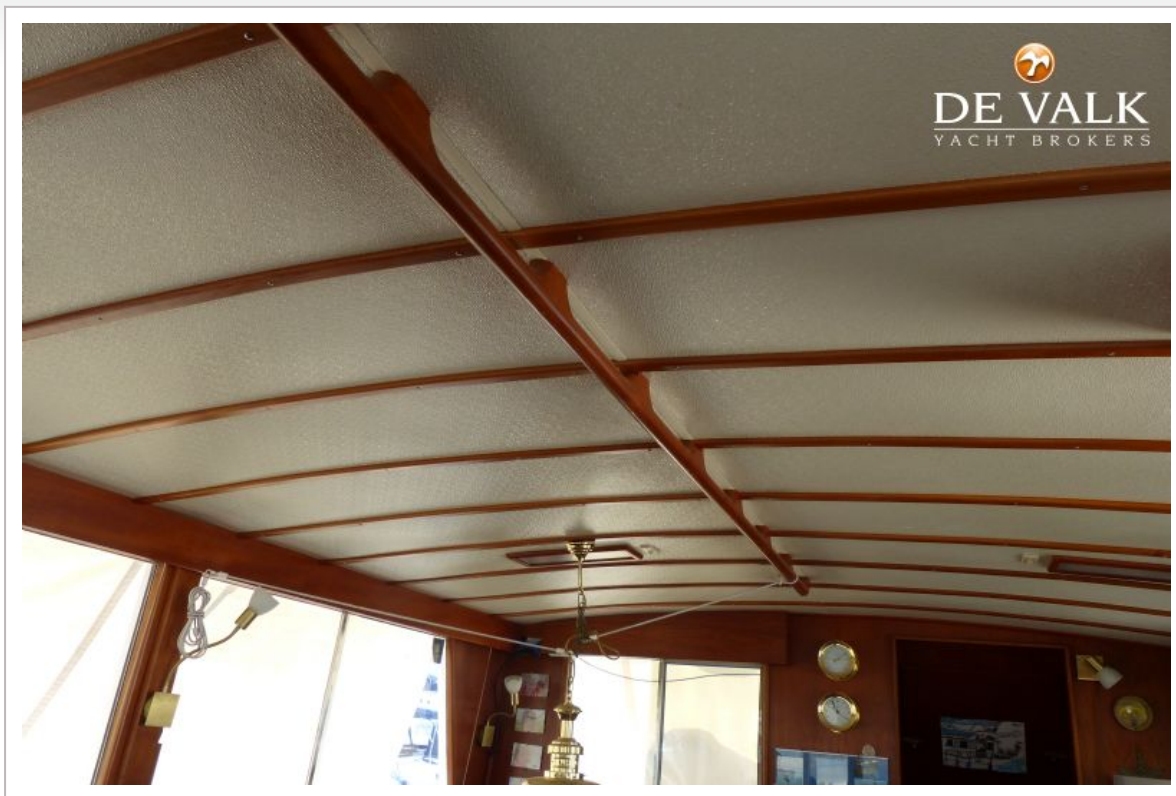
GRAND BANKS 42 CLASSIC



GRAND BANKS 42 CLASSIC



GRAND BANKS 42 CLASSIC



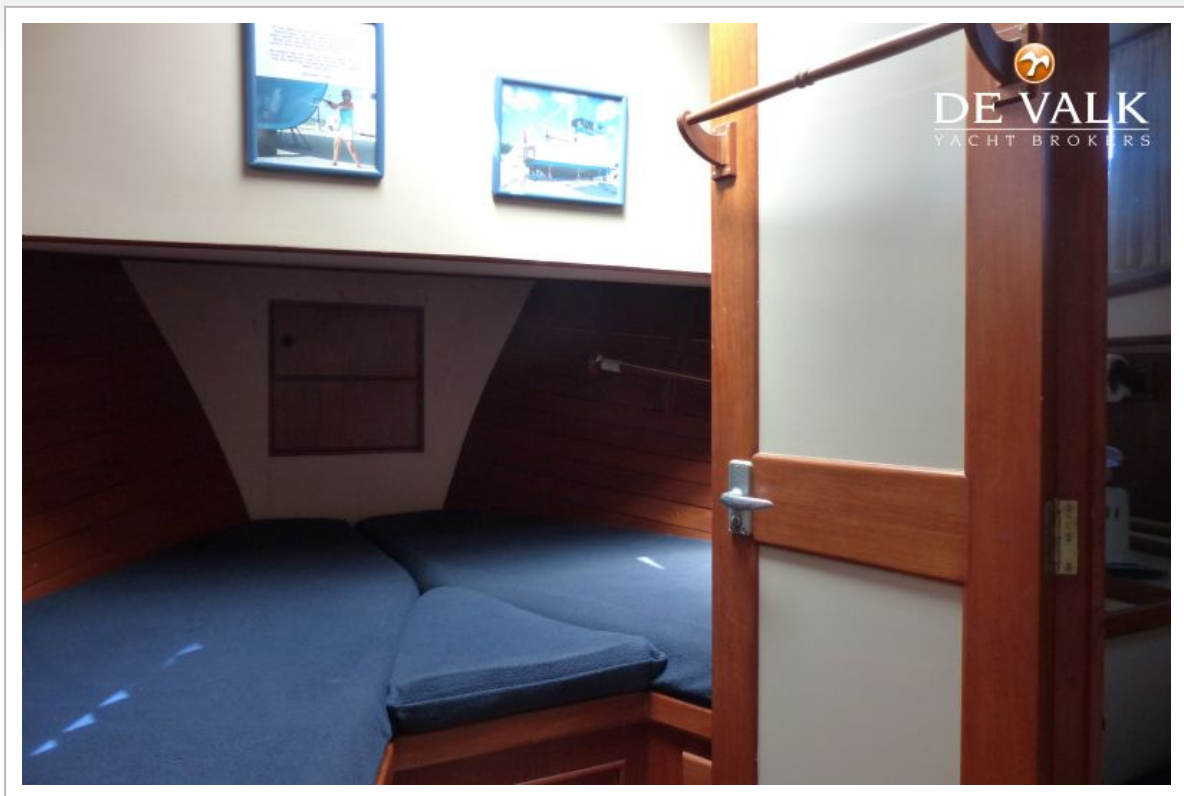
GRAND BANKS 42 CLASSIC



GRAND BANKS 42 CLASSIC



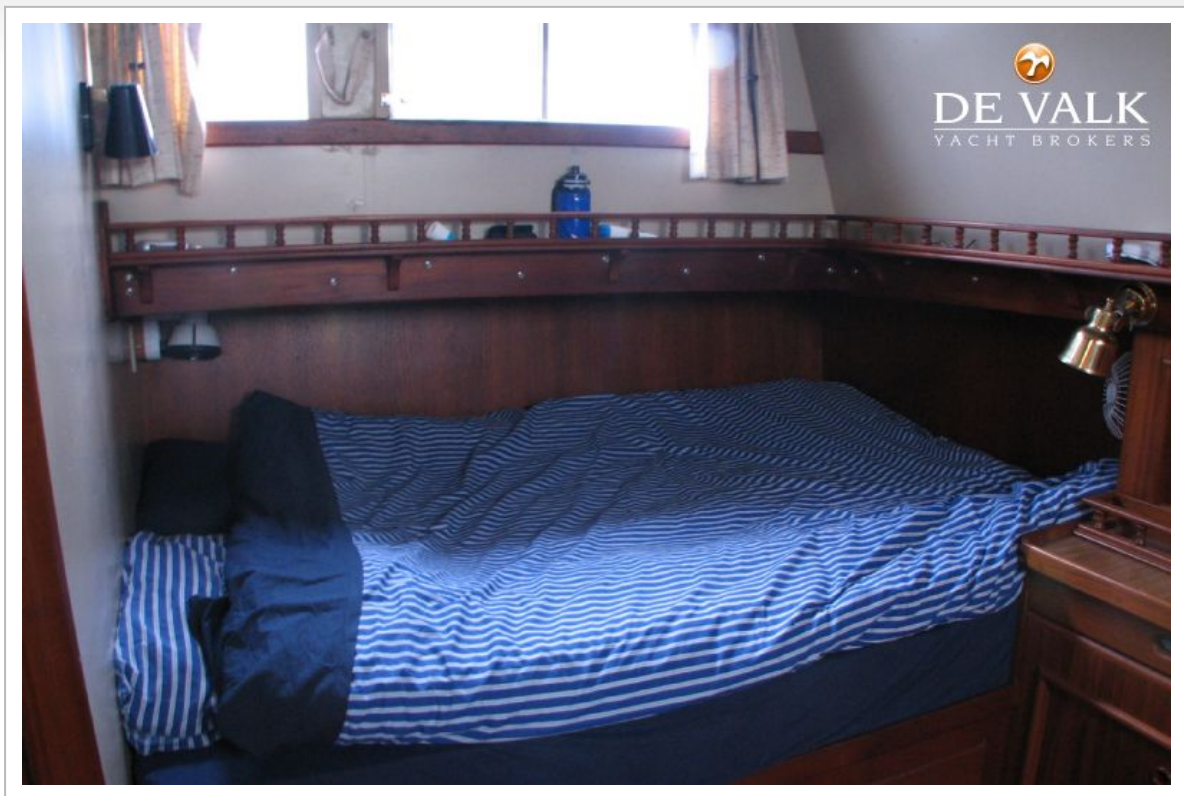
GRAND BANKS 42 CLASSIC



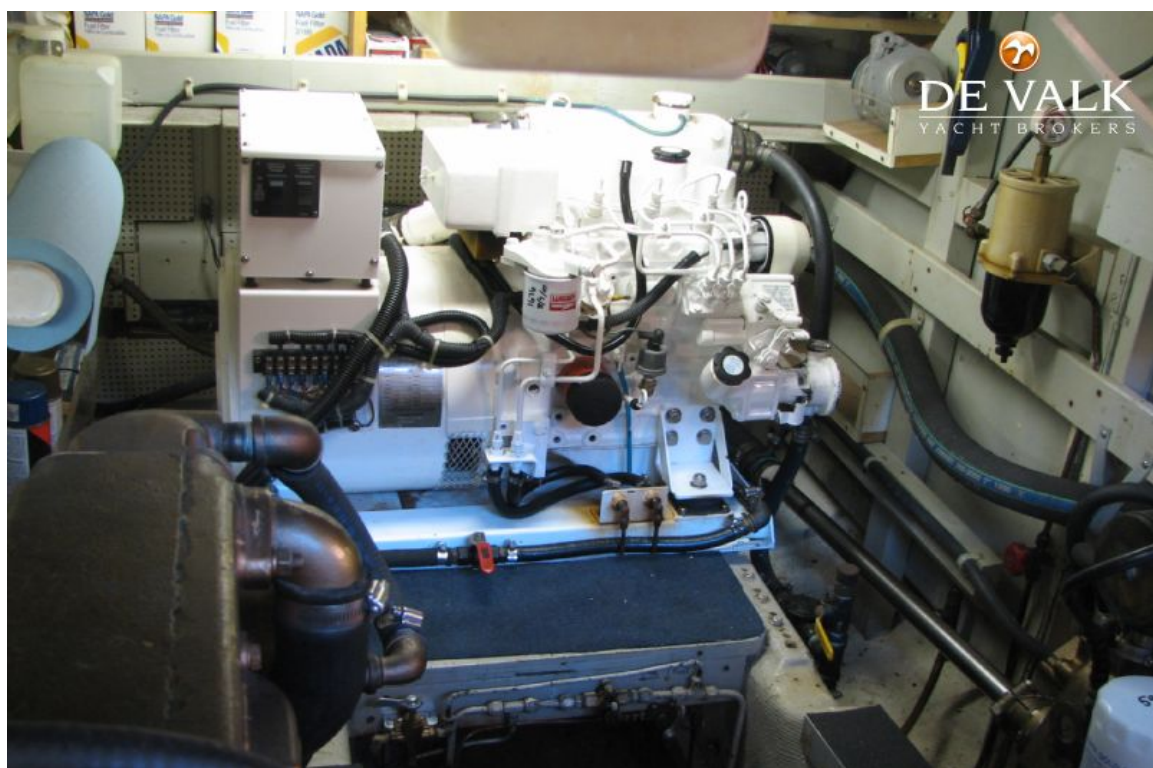
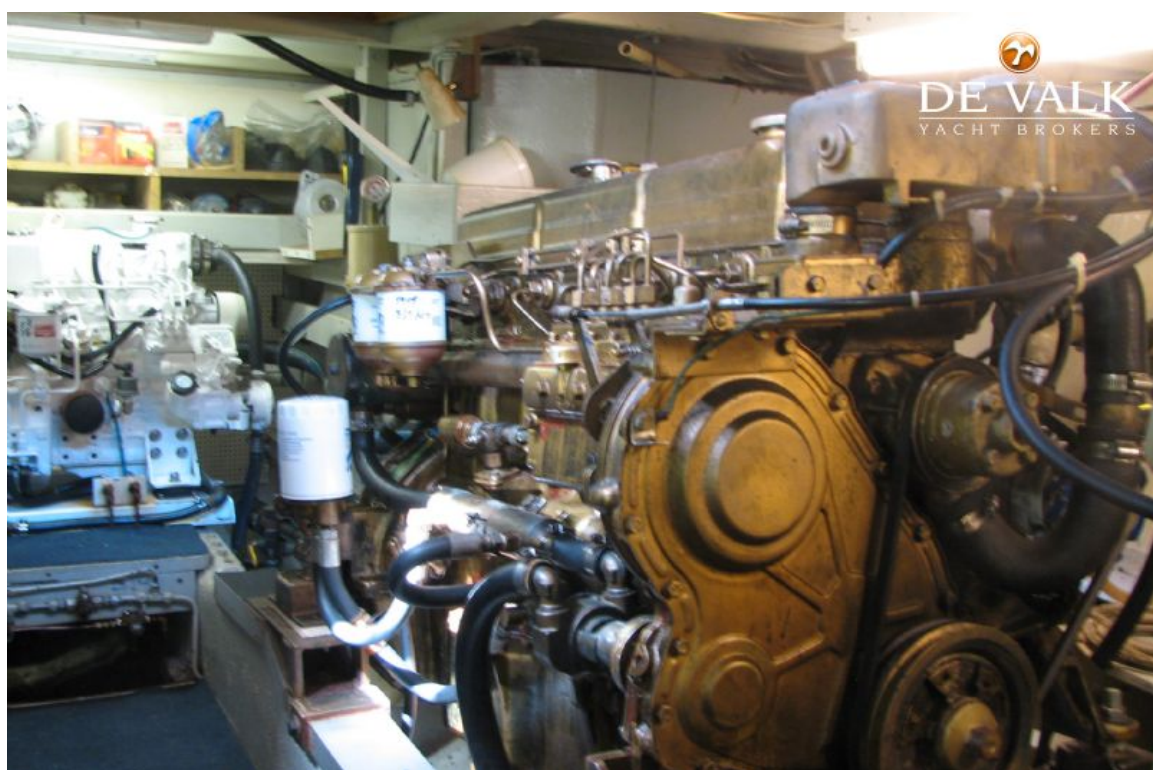
GRAND BANKS 42 CLASSIC



GRAND BANKS 42 CLASSIC



GRAND BANKS 42 CLASSIC



GRAND BANKS 42 CLASSIC

