



DE VALK  
YACHT BROKERS

## GRAND SOLEIL 46



DE VALK  
YACHT BROKERS

## BROKER'S COMMENTS

The Grand Soleil 46 as each Grand Soleil designed by the ingenious Alain Jézéquel, has been considered since the beginning among the best models of the Yard. Her classic shape, with moderate overhangs and elegant sheer line gives her a timeless taste that has been always compared to the Swans from Nautor. She can comfortably accomodate six people with a class and an elegance out of reach for modern production boats. This unit has been very well kept and is the best deal on the market.

*Alan Deasti*

## SPECIFICATIONS

<b>Dimensions</b>	13.99 x 4.20 x 2.00 (m)	<b>Builder</b>	CANTIERI DEL PARDO
<b>Built</b>	1989	<b>Cabins</b>	3
<b>Material</b>	GRP	<b>Berths</b>	8
<b>Engine(s)</b>	1 x VOLVO PENTA MD31A diesel	<b>Hp/Kw</b>	62.00 (hp), 45.57 (kw)
<b>Asking price</b>	sold (VAT )	<b>Lying</b>	contact Antibes

## CONTACT

<b>Sales office</b>	De Valk Antibes	<b>Telephone</b>	+33 492 91 0202
<b>Address</b>	2, Avenue de Verdun 06600 Antibes FR	<b>E-mail</b>	antibes@devalk.nl

## DISCLAIMER

These particulars are given in good faith as supplied but cannot be guaranteed.



## GENERAL

Model	GRAND SOLEIL 46
Type	sailing yacht
LOA (m)	13,99
Beam (m)	4,20
Draft (m)	2,00
Year built	1989
Builder	CANTIERI DEL PARDO
Country	Italy
Designer	Alain JEZEQUEL
Displacement (t)	13
CE norm	A
Hull material	GRP
Hull colour	white
Deck material	teak
Cockpit deck finish	teak
Antifouling (year)	2018
Fuel tank (litre)	stainless steel 350 liters
Freshwater tank (litre)	stainless steel 630 liters
Greywater tank (litre)	yes
Outside helm position	yes

## ACCOMMODATION

Cabins	3
Berths	8
Pilot house	yes
Saloon	New cushions
Heating	yes
Navigation center	yes
Chart table	yes
Galley	yes



Countertop	yes
Sink	yes
Cooker	calor gas
Oven	yes
Fridge	yes
Freezer	yes
Hot water system	yes
Owners cabin	double bed + single bed
Bathroom	en suite
Toilet	en suite
Toilet system	manual
Wash basin	in the bathroom
Shower	en suite
Guest cabin 1	double bed
Bathroom	shared
Toilet	shared
Toilet system	manual
Wash basin	in the bathroom
Shower	shared
Guest cabin 2	double bed
Bathroom	shared
Toilet	shared
Toilet system	manual
Wash basin	in the bathroom
Shower	shared

## MACHINERY

No of engines	1
Make	VOLVO PENTA
Type	MD31A
HP	62,00



<b>kW</b>	45,57
<b>Fuel</b>	diesel
<b>Year of overhaul</b>	2018
<b>Propeller type</b>	folding
<b>Propeller blades</b>	Tri-Blades Max Prop
<b>Start battery</b>	1 / 110A
<b>Service battery</b>	4 New / 100A
<b>Battery charger</b>	yes
<b>Solar panel</b>	300W
<b>Shorepower</b>	with cable

## NAVIGATION

<b>Compass</b>	yes
<b>Depth sounder/log</b>	yes
<b>Windset</b>	Full functions with wind directions
<b>VHF</b>	yes
<b>Autopilot</b>	yes
<b>Rudder angle indicator</b>	yes
<b>Radar</b>	RAYTHEON
<b>GPS</b>	RAYTHEON
<b>Navigation lights</b>	yes

## EQUIPMENT

<b>Bimini</b>	yes
<b>Boarding ladder</b>	yes
<b>Anchor</b>	Delta 25 kg
<b>Anchor 2</b>	yes
<b>Anchor chain</b>	10mm / 90 meters
<b>Windlass</b>	electrical LOFRAN 1500W
<b>Dinghy</b>	5 persons
<b>Outboard</b>	New Honda 4T 2,5 HP



Life raft (pers)	container 6
Last life raft survey	2017
Fenders	yes
Mooring lines	yes
Surround Sound System	yes
Sub-woofer	yes
Fire extinguisher	yes
Extra info	Lights in LED system

## RIGGING

Rigging	sloop
Standing rigging	yes
Material mast	aluminium
Mainsail	2016 / Battened
Jib	yes
Genoa	2016
Genoa furler	yes
Spinnaker	New
A-symetric spi	yes
Staysail	Very good condition
Extra info	New Halyards in Dynema





# GRAND SOLEIL 46



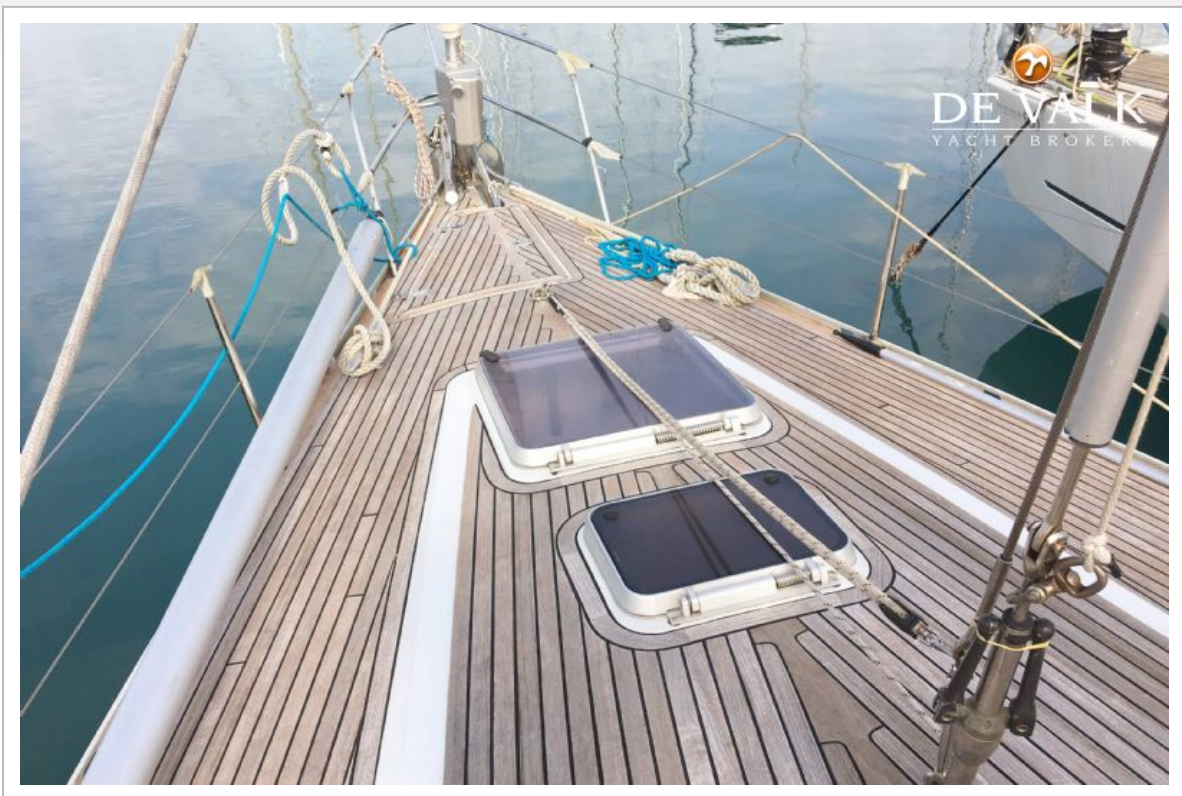


# GRAND SOLEIL 46





# GRAND SOLEIL 46

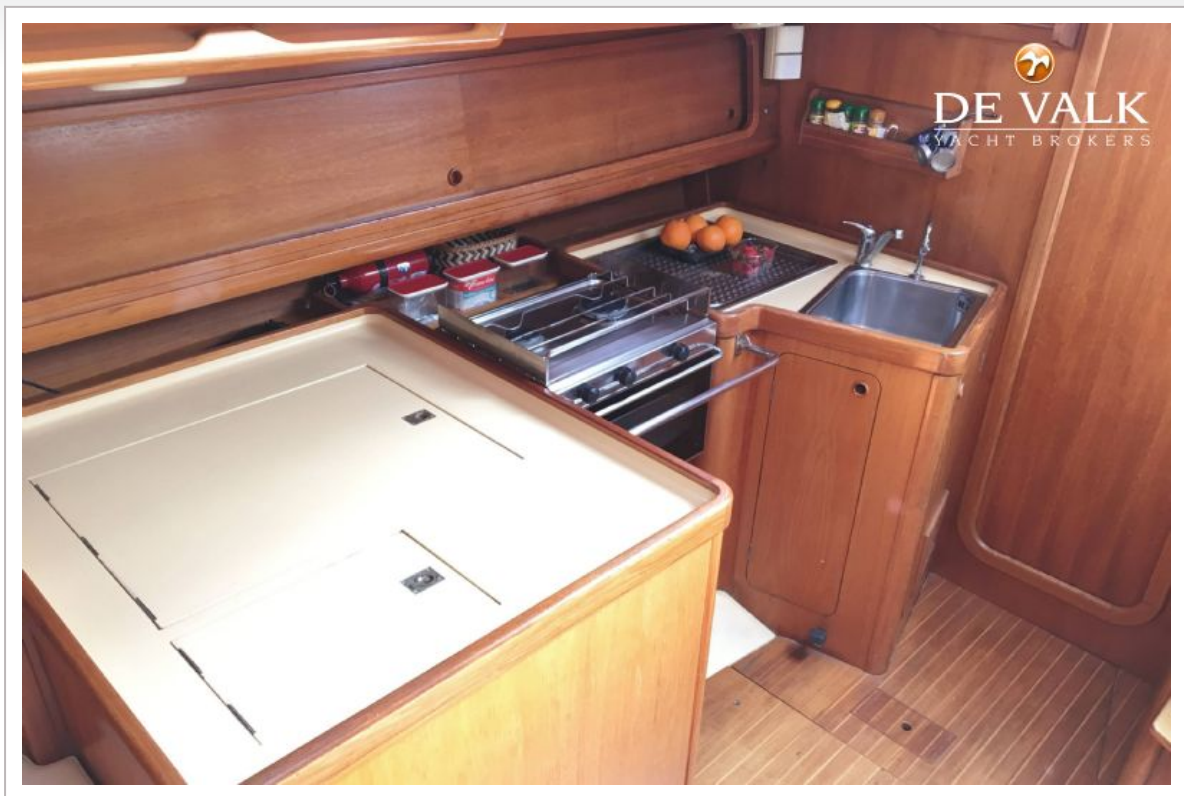


# GRAND SOLEIL 46

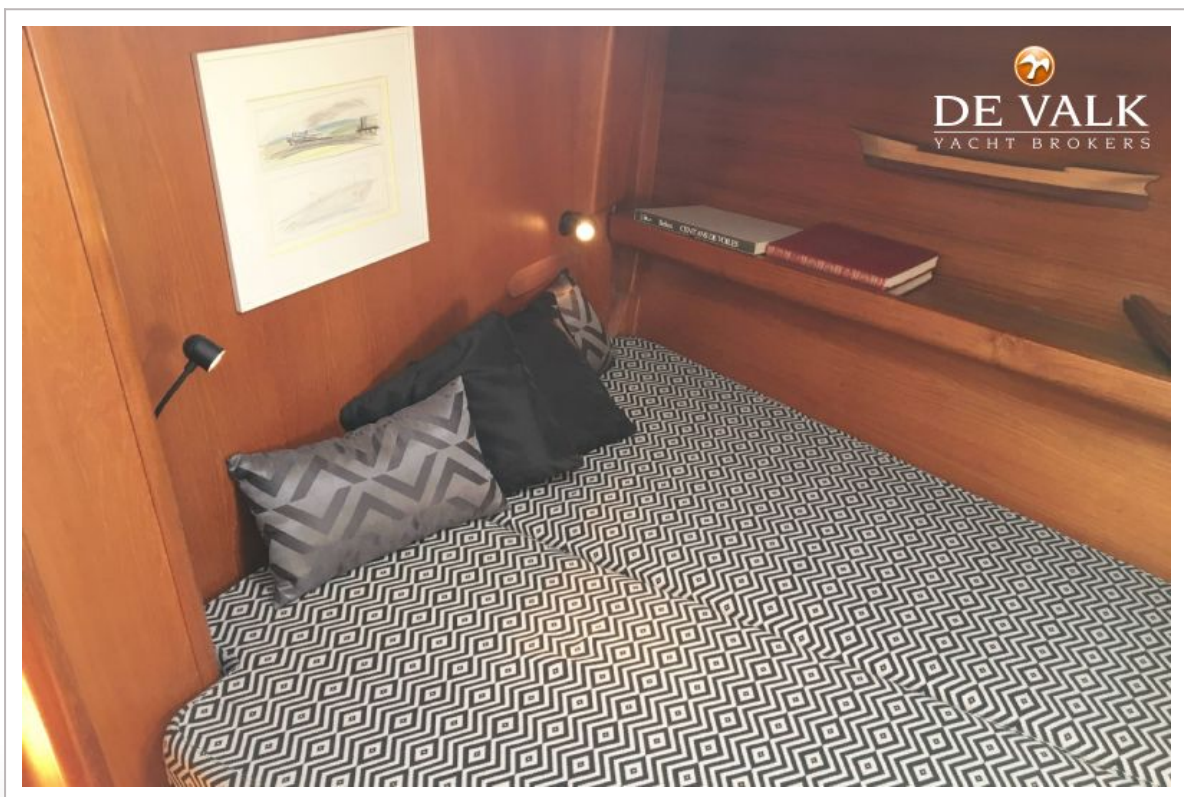
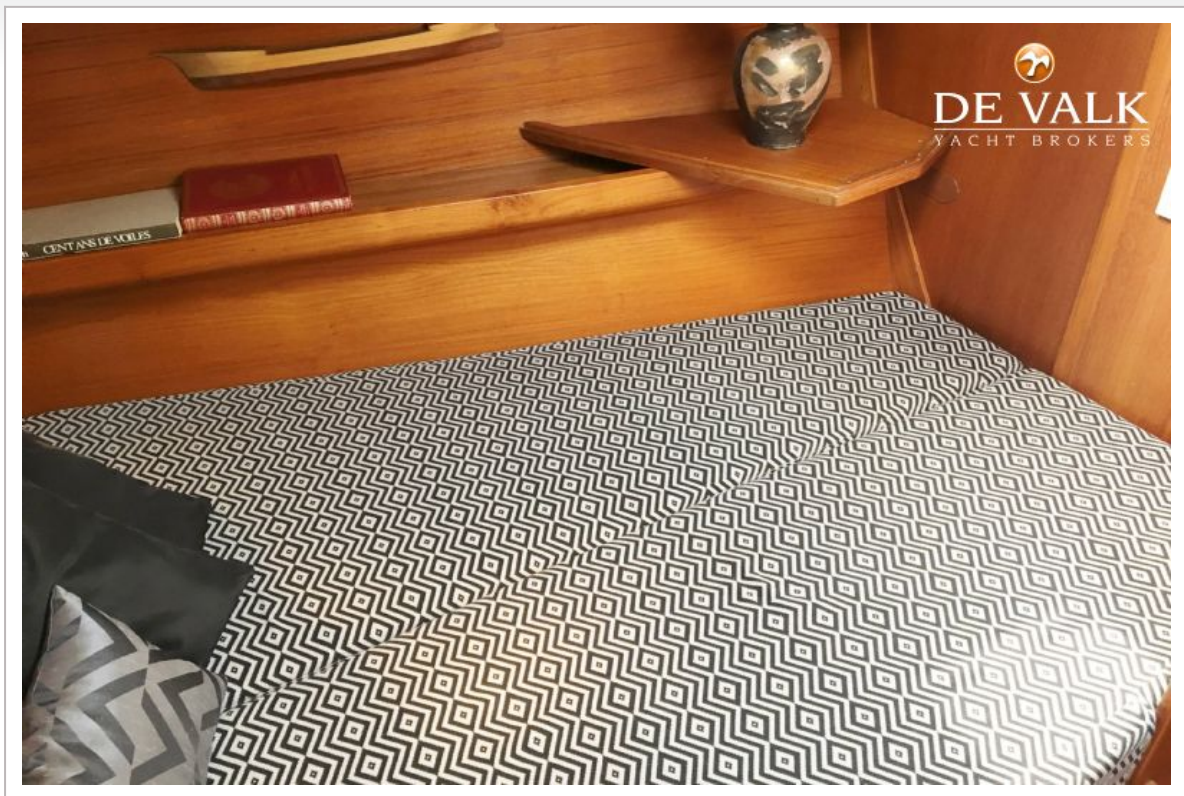




# GRAND SOLEIL 46

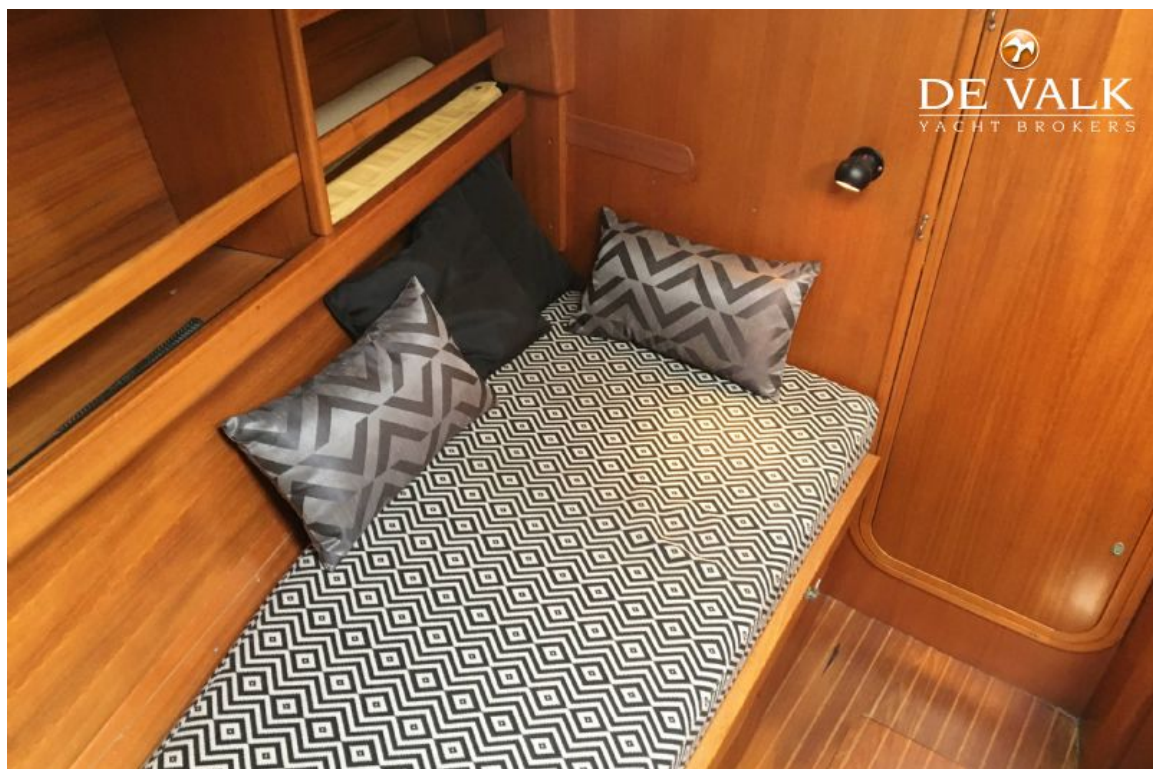


# GRAND SOLEIL 46

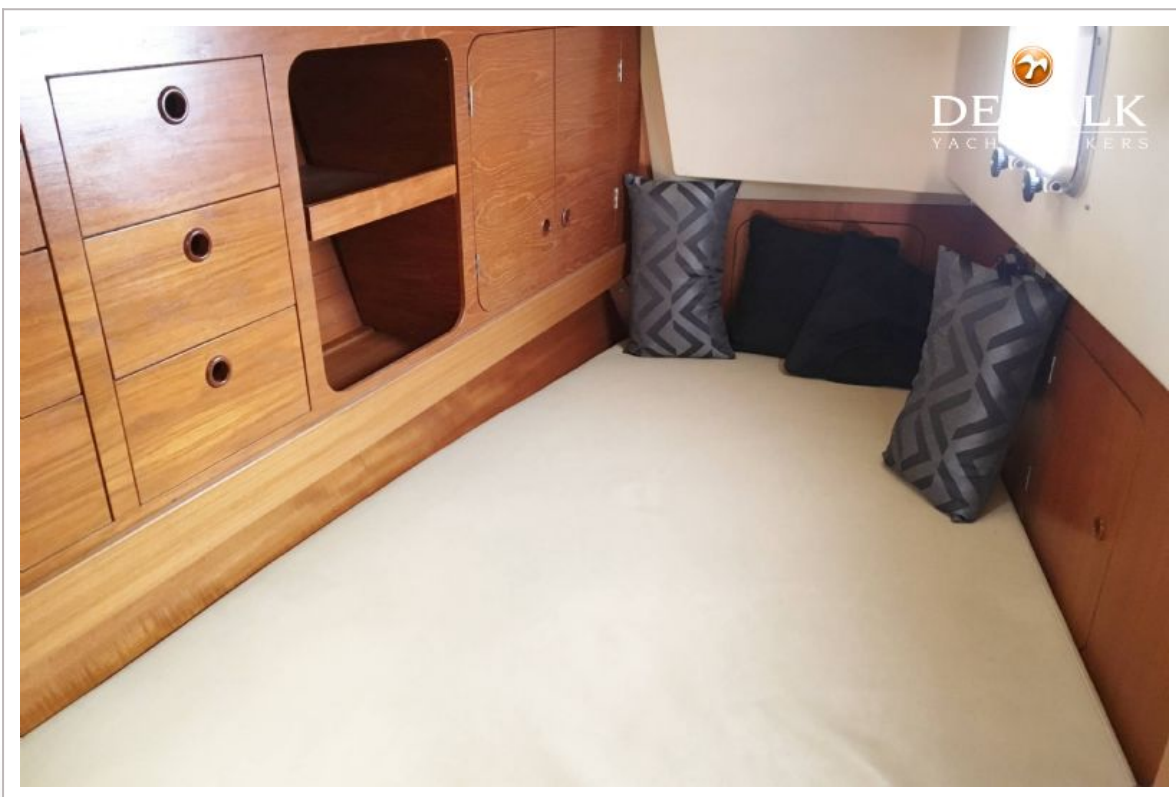
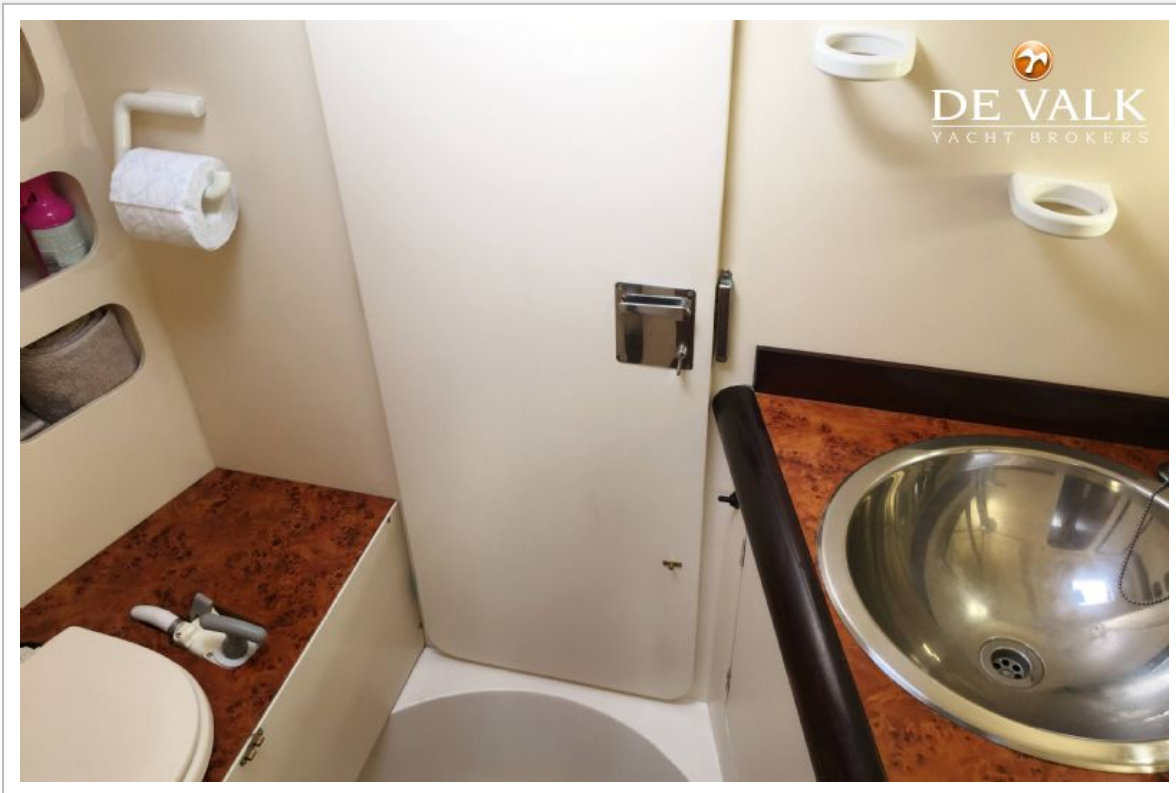




## GRAND SOLEIL 46



# GRAND SOLEIL 46





# GRAND SOLEIL 46

