



STERLING 44



STERLING 44

BROKER'S COMMENTS

This eye-catching Sterling 44 was built in 1986, completely refurbished in 2014 and has also undergone an extensive refit in 2018. The interiors and exquisite design offer unparalleled comfort. She has six beautifully lit cabins that welcome up to 12 guests as well and crew berths for 8 crew members. Powered by two Mitsubishi S12N - MTK engines, she reaches a maximum speed of 15 knots and has a transatlantic range. Head-turning features include her wide aft deck, outdoor jacuzzi and stabilizers for smooth cruising. She is in turn key condition and ready for her new owner !

Alan Deasti

SPECIFICATIONS

Dimensions	43.59 x 8.70 x 2.50 (m)	Builder	Nishii Zosen - Sterling
Built	1986	Cabins	6
Material	GRP	Berths	12
Engine(s)	2 x Caterpillar C32 diesel	Hp/Kw	2 x 1,000.00 (hp), 736.00 (kw)
Asking price	€ 7.450.000 (VAT Not paid)	Lying	Italy

CONTACT

Sales office	De Valk Antibes	Telephone	+33 492 91 0202
Address	2, Avenue de Verdun 06600 Antibes FR	E-mail	antibes@devalk.nl

DISCLAIMER

These particulars are given in good faith as supplied but cannot be guaranteed.



GENERAL

Model	STERLING 44
Type	motor yacht
LOA (m)	43,59
Beam (m)	8,70
Draft (m)	2,50
Year built	1986
Builder	Nishii Zosen - Sterling
Country	Japan
Designer	Tom Fexas & Jon Bannenberg
Displacement (t)	329
Hull material	GRP
Hull colour	New full paint Dark Blue
Superstructure material	GRP
Deck material	teak
Flybridge	yes
Fuel tank (litre)	60.000
Freshwater tank (litre)	15.000
Blackwater tank (litre)	yes
Greywater tank (litre)	yes

ACCOMMODATION

Cabins	6
Berths	12
Crew cabin	4
Crew berths	8
Aft deck	With a table seating 10 guests and a lounge area
Saloon	With a large L-shaped sofa
Heating	yes
Air-conditioning	reverse cycle airco
Chart table	yes



Dining room	From 6 to 8 guests
Galley	Spacious and fully equiped
Countertop	yes
Sink	yes
Cooker	yes
Oven	2
Extractor	yes
Microwave	yes
Fridge	yes
Freezer	yes
Wine cooler	yes
Hot water system	yes
Dishwasher	yes
Kettle	yes
Ice maker	yes
Coffee maker	yes
Waste compactor	yes
Owners cabin	double bed Full beam
Bed length (m)	2m
Wardrobe	hanging and drawers
Bathroom	en suite Done in a beautiful marble
Toilet	en suite
Wash basin	in the bathroom
Bath tub	en suite
Guest cabin 1	double bed
Wardrobe	hanging/drawers/shelves
Bathroom	en suite
Toilet	en suite
Wash basin	in the bathroom
Shower	en suite Stall
Guest cabin 2	double bed
Wardrobe	hanging/drawers/shelves



Bathroom	en suite
Toilet	en suite
Wash basin	in the bathroom
Shower	en suite
Guest cabin 3	twin single
Wardrobe	hanging/drawers/shelves
Bathroom	En suite
Toilet	en suite
Wash basin	in the bathroom
Shower	en suite
Guest cabin 4	double bed
Wardrobe	drawers
Bathroom	En suite
Toilet	en suite
Wash basin	in the bathroom
Shower	en suite
Crew cabin(s)	4
Bathroom (crew)	4
Toilet (crew)	4
Shower (crew)	4
Washing machine	yes
Dryer	yes
Ironing facilities	yes
Sky lounge	yes
Wet bar	yes
Extra info	5th guest cabin

MACHINERY

No of engines	2
Make	Caterpillar
Type	C32



HP	1000
kW	736.00
Fuel	diesel
Year installed	2022
Maximum speed (kn)	15
Cruising speed (kn)	11,5
Consumption (l/hr)	180
Range (nm)	3600
Engine controls	yes
Bowthruster	yes
Sternthruster	yes
Gearbox	yes
Exhaust	yes
Propeller type	fixed
Electric bilge pump	yes
Bilge alarm	yes
Generator	Caterpillar 99 kW 60 Hz
Generator 2	Caterpillar 60 kW 60 Hz
Batteries	yes
Watermaker	yes
Stabilizers	yes

NAVIGATION

Compass	yes
Electric compass	yes
Depth sounder	yes
Log	yes
Repeater	yes
Fish finder	yes
VHF	yes
VHF handheld	yes



Autopilot	yes
Radar	yes
GPS	yes
Plotter	yes
Weather receiver	yes
Navtex	yes
Personal computer	yes
PC connection	yes
Wifi antenna	yes
Electronic chart(s)	yes
AIS receiver	yes
AIS transponder	yes
Radio receiver	yes
Transmitter	yes
EPIRB	yes
Navigation lights	yes
Searchlight	yes
Loudhailer	yes

EQUIPMENT

Bathing platform	yes
Boarding ladder	aluminum
Transom door	yes
Gangway	yes
Deck shower	yes
Anchor	And anchor stabilizers
Anchor chain	yes
Chain counter	yes
Windlass	yes
Capstan	yes
Windlass aft	yes



Deck wash	yes
Dinghy	6.5m Bombard with Yamaha 115 HP engine
Outboard	Yamaha 115HP
Deck crane	yes
Grab rail (superstructure)	yes
Life raft	yes
Lifejackets	yes
Lifebuoy	yes
Horn	yes
Binocular	yes
Fenders	yes
Mooring lines	yes
Spare parts	yes
Tools	yes
Alarm system	yes
TV	yes
TV receiver	yes
Satellite	yes
Radio-cd player	yes
DVD player	yes
iPod connection	yes
Surround Sound System	yes
Sub-woofer	yes
Speakers in salon	yes
Speakers in cabin	yes
Clock - barometer	yes
Fire extinguisher	yes
Extinguisher in engine room	yes
Auto extinguisher system	yes
Extra info	2 Jet Ski Yamaha
Extra info	Wakeboard - Paddle - Diving equipment

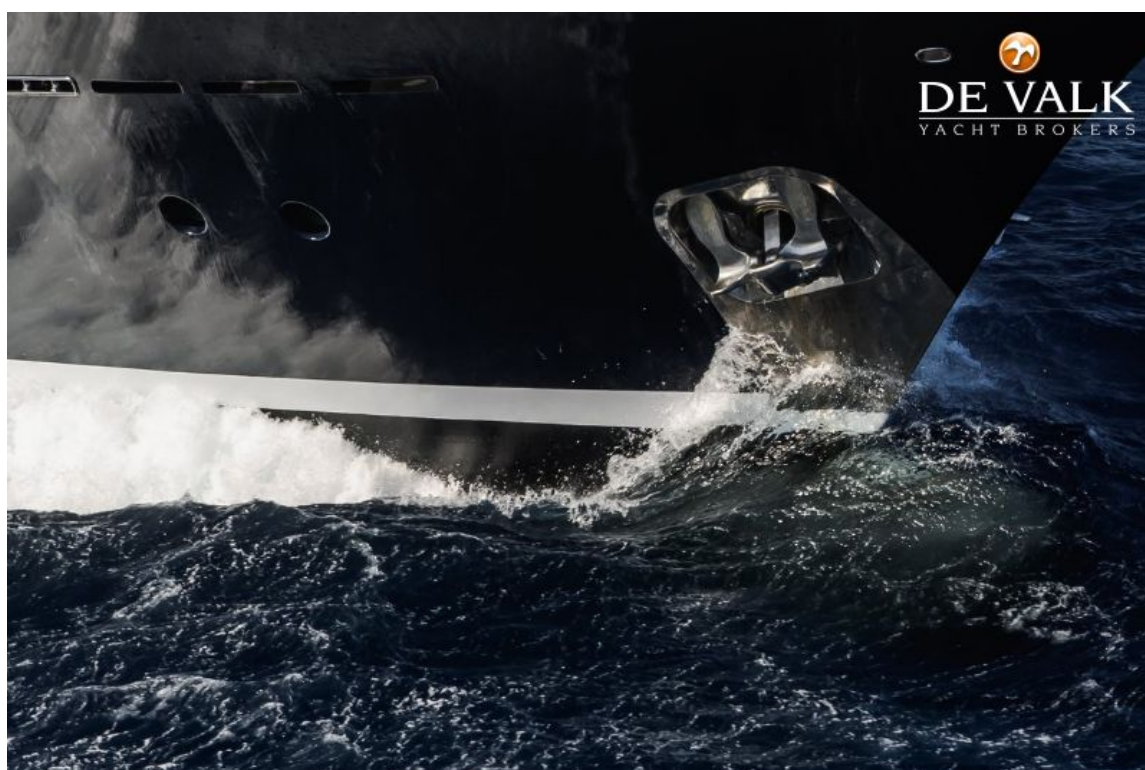




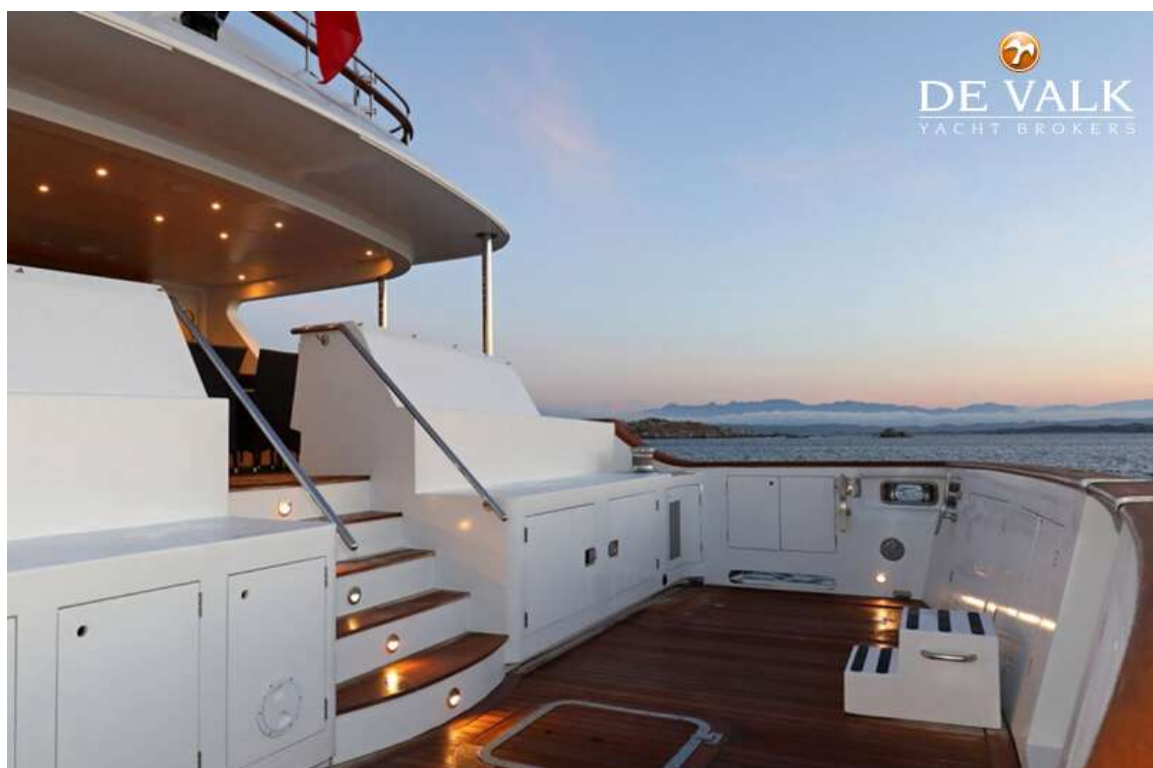
STERLING 44



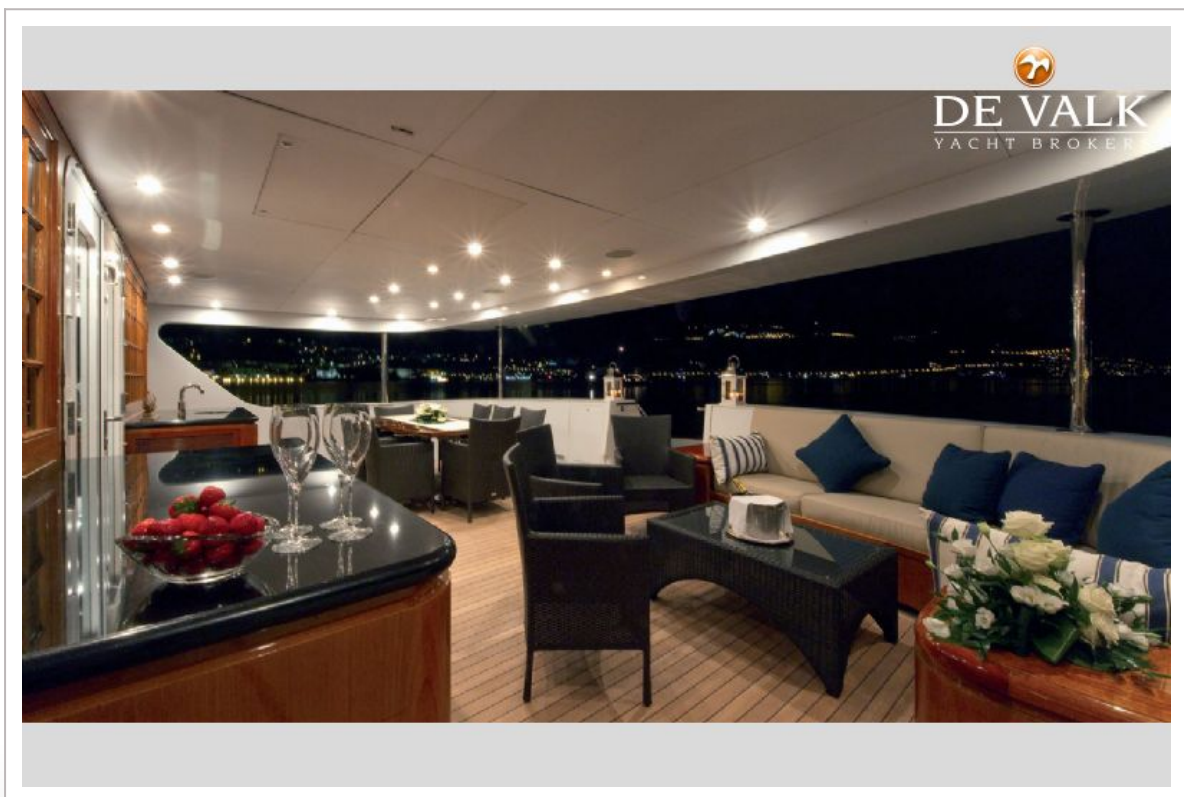
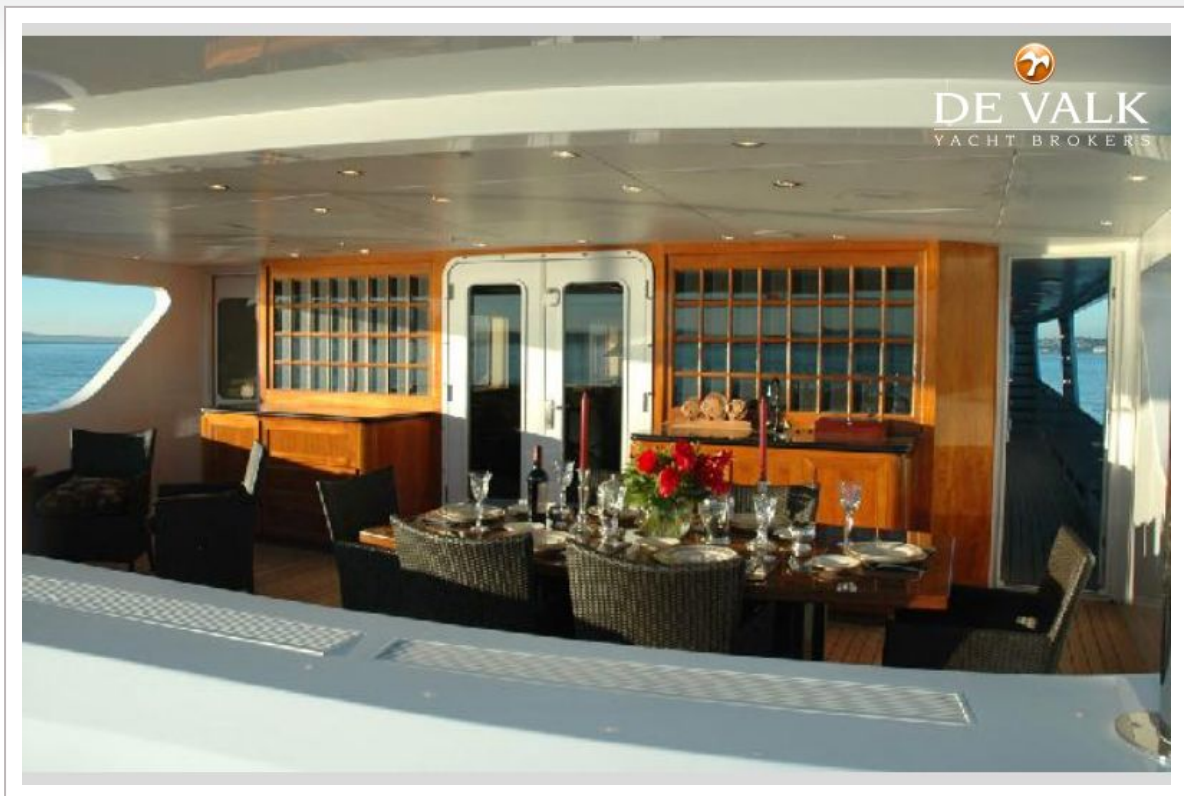
STERLING 44



STERLING 44

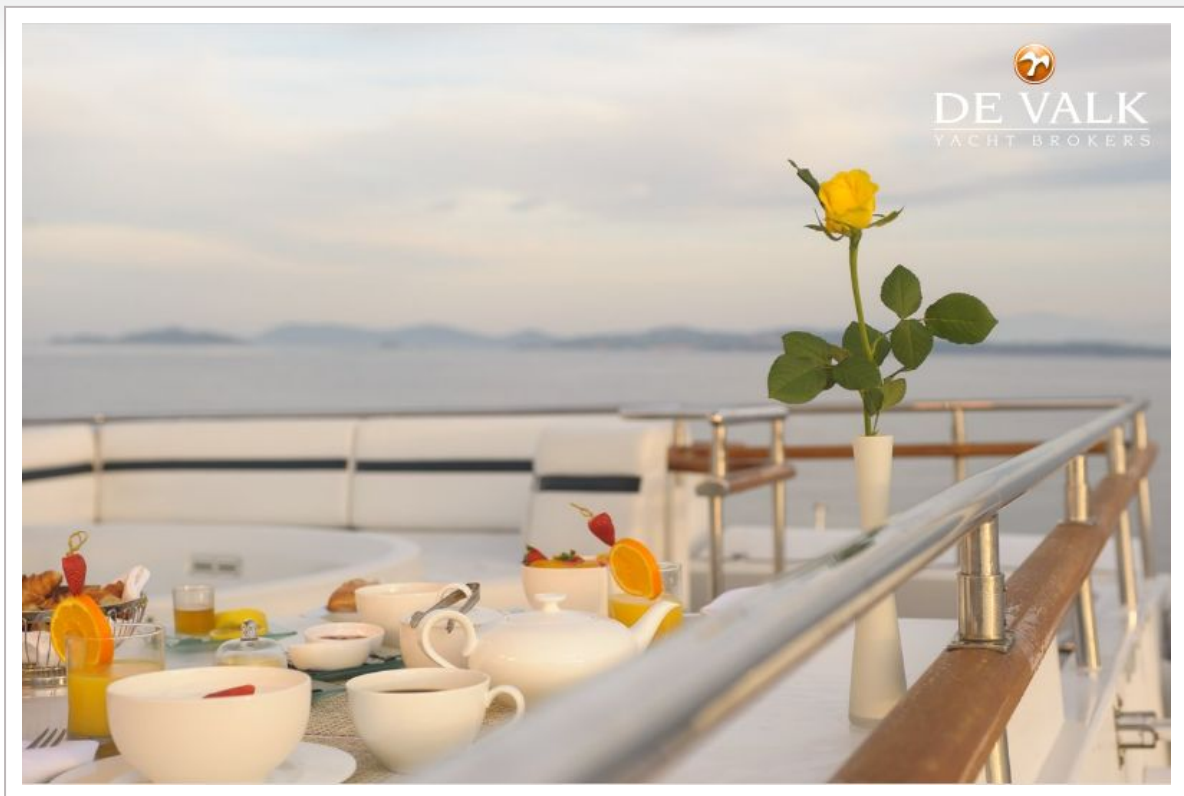


STERLING 44



STERLING 44





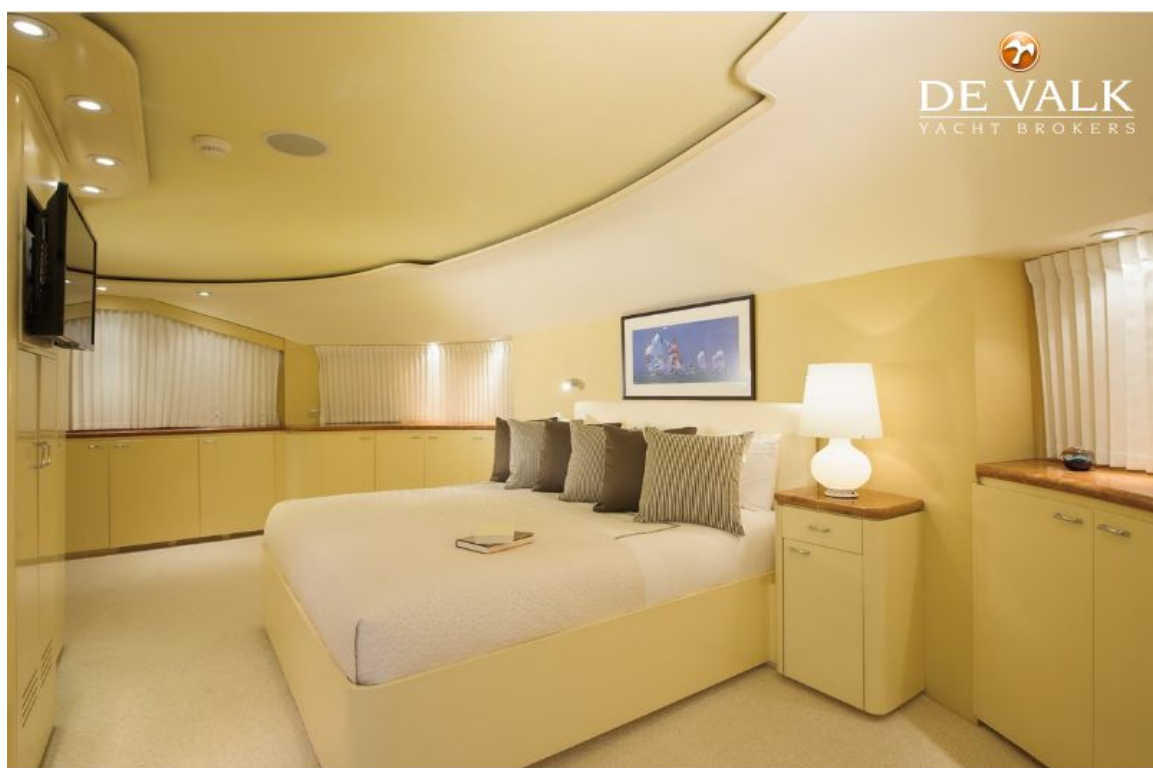
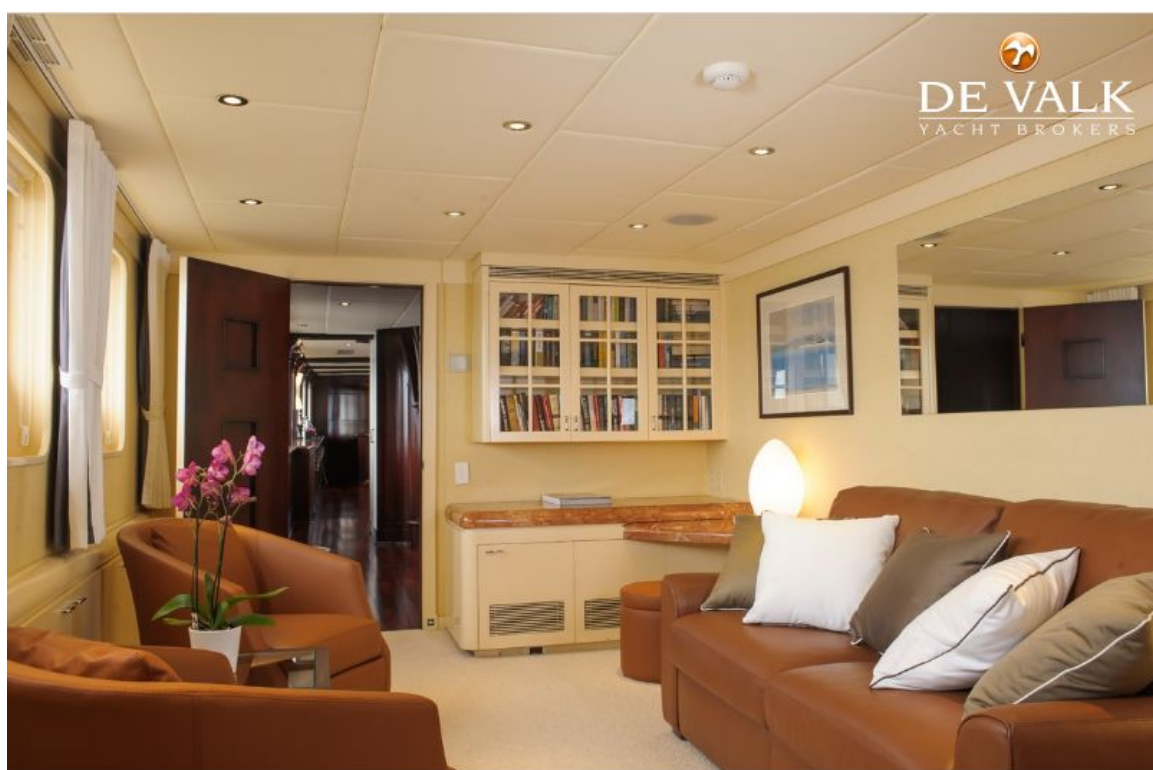
STERLING 44



STERLING 44



STERLING 44



STERLING 44



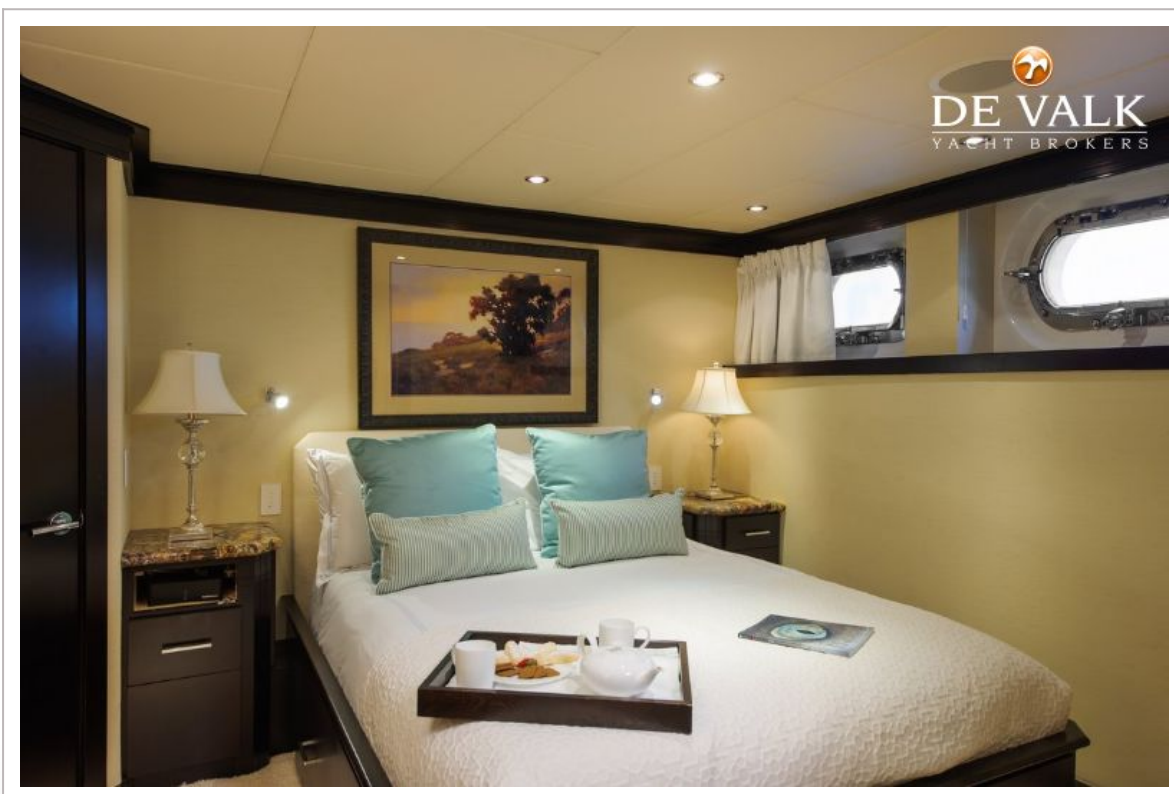
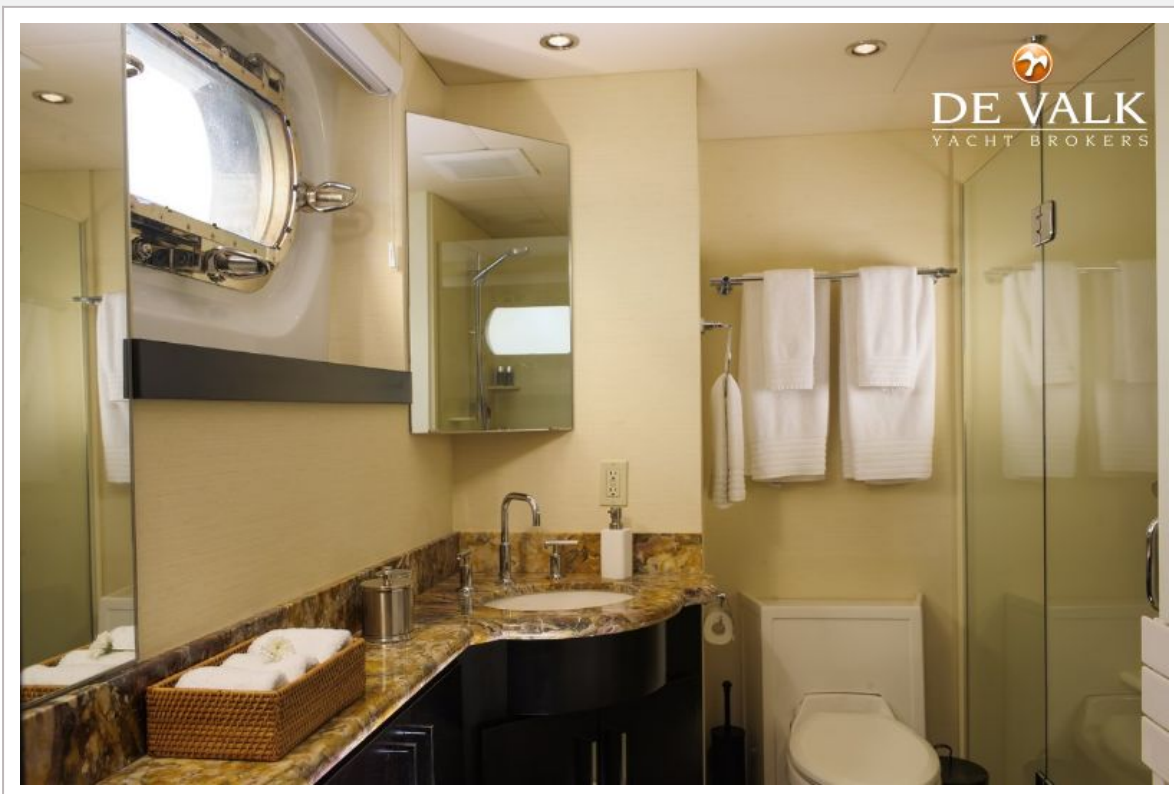
STERLING 44



STERLING 44



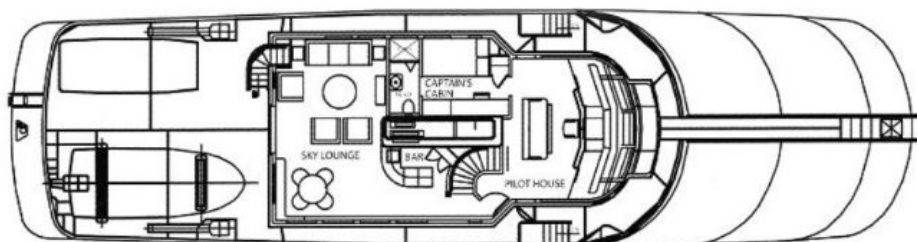
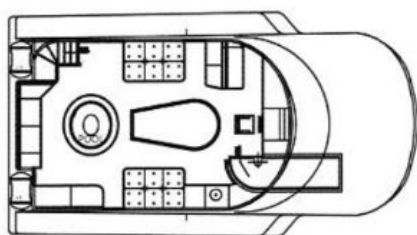
STERLING 44



STERLING 44



STERLING 44



DE VALK
YACHT BROKERS

